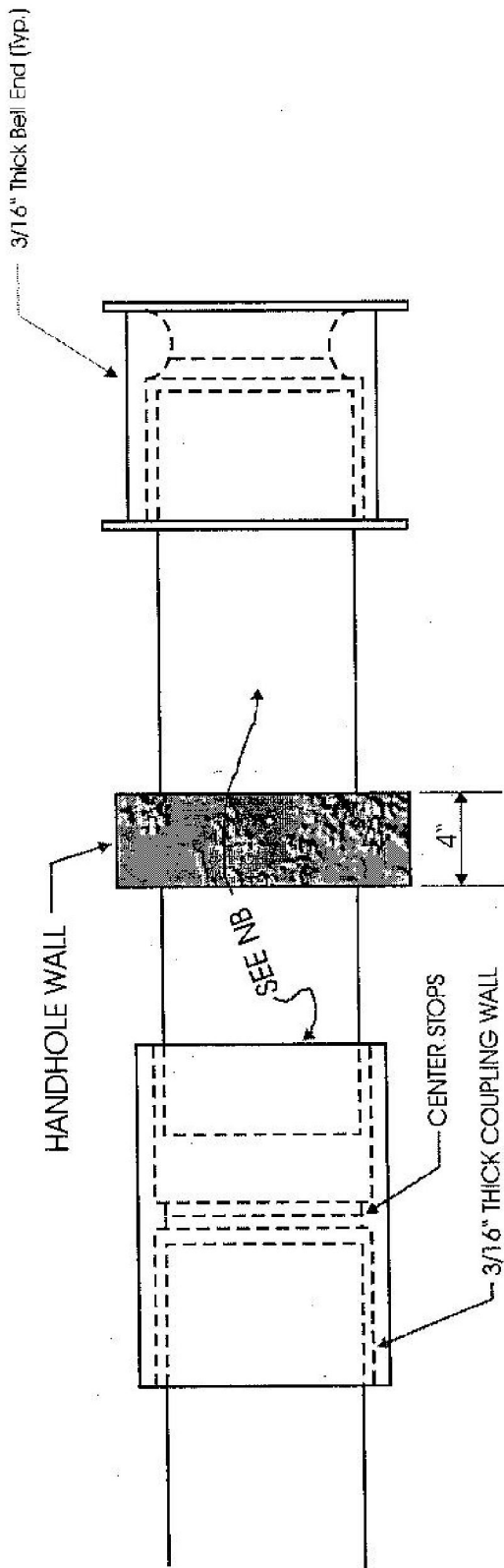


TYPICAL INSTALLATION OF PVC CONDUIT



NB: TEST FIT THE CONDUIT AND THE FITTING. IF THE CONDUIT WILL NOT ENTER THE FITTING WITHOUT FORCING, REDUCE THE DIAMETER BY SANDING OR FILING. TAKE CARE NOT TO GOUGE OR FLATTEN THE CONDUIT END. APPLY PVC SOLVENT CEMENT IN A THICK UNIFORM COATING TO THE OUTER SURFACE OF THE CONDUIT END AND THIN COATING TO THE INNER SURFACE OF THE FITTING. INSERT THE CONDUIT END INTO THE FITTING UNTIL IT BOTTOMS AT THE INTERIOR SHOULDER. TURN THE CONDUIT ONE QUARTER (1/4) TURN DURING INSERTION AND HOLD THE CONDUIT IN PLACE FOR ONE (1) MINUTE.

NOTE: THREADLESS RIGID PVC CONDUIT SHALL COMPLY WITH ASTM SPEC. D1784 SCHEDULE 80. PVC SOLVENT CEMENT SHALL COMPLY WITH ASTM SPEC. 2564. PVC CONDUIT FITTINGS SHALL BE U.L. APPROVED & COMPLY WITH ASTM SPECIFICATIONS.