

Housing Innovation Competition

24 Westminster Avenue, Roxbury, Massachusetts

Space – in a micro unit!

This design provides expansive, light-filled living space that belies expectations for a unit this size. Interlocking sections and efficient floor plans of this small-scale structure allow for an affordable, replicable and remarkably livable space.



LIVING SPACE
10'-6" high over a full 12' X 12' dedicated living room

KITCHENETTE
speed oven, tall fridge, mini dishwasher

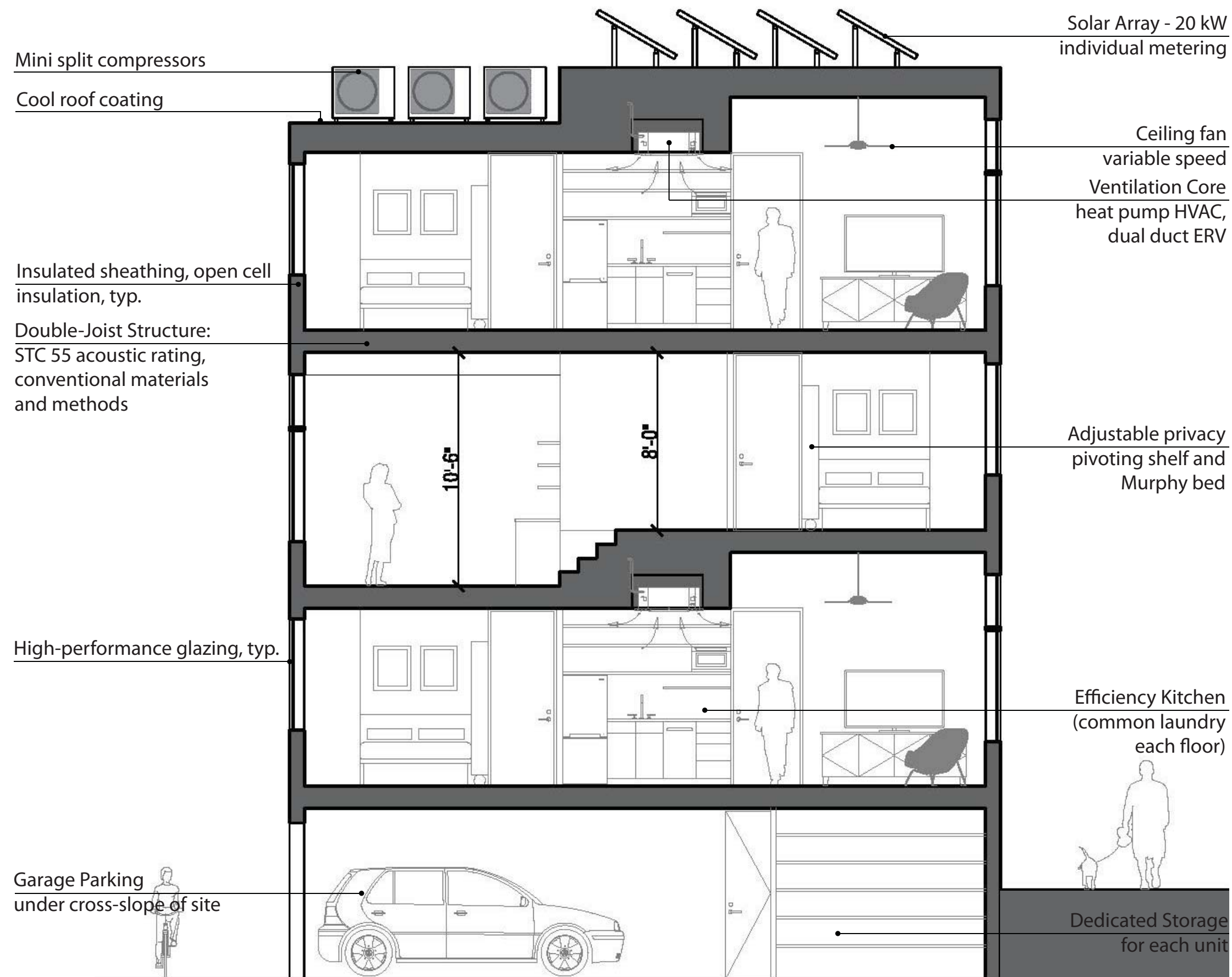
KITCHEN TABLE
island option for additional storage and counter space

8' TALL WINDOWS
abundant natural light w/cross ventilation

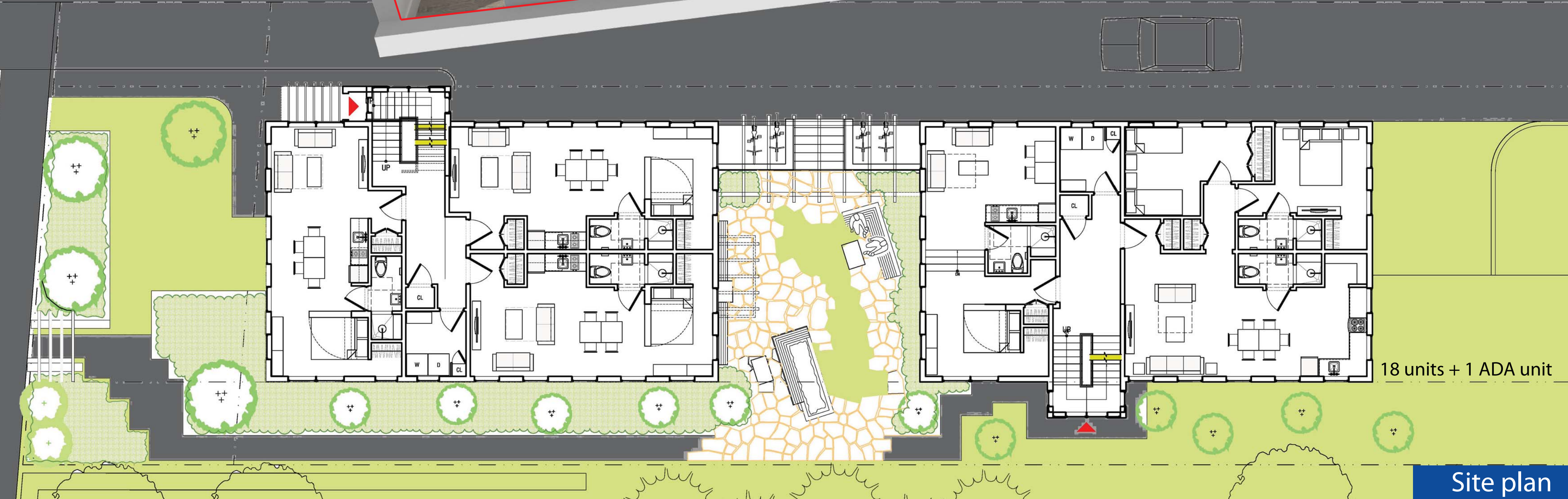
VENTILATION CORE
ceiling-mounted heat pump, ERV within acoustic envelope
COMPACT BATH
MAAB Group1-compliant low-flow fixtures
CROSS VENTILATION
multi-directional natural light + air in all units

PIVOTING BOOKSHELF
separates sleeping and living areas, retracts for work/exercise/play space
MURPHY BED
can be left down most days

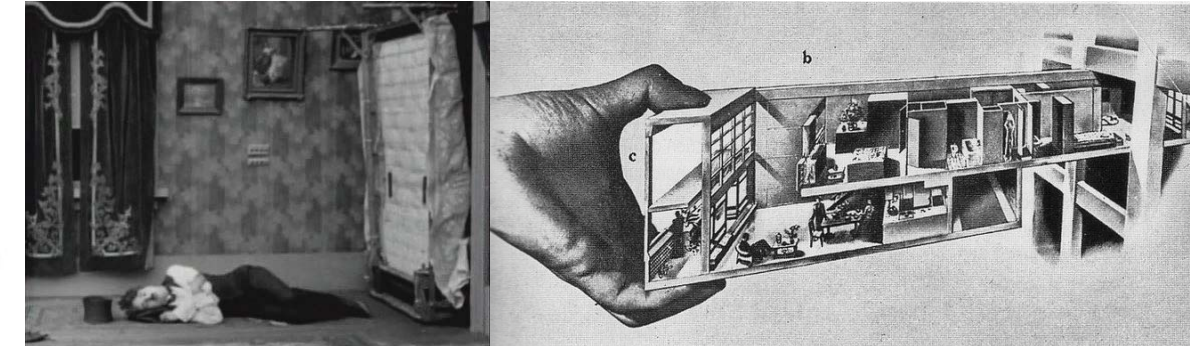
Typical unit



Innovation Section



Site plan



Maple Hurst Builders, Inc
Design, Development & Craftsmanship

michael kim | associates

CONTINUUM Landscape Architects
Creating Innovative Landscapes that Engage and Inspire



Street view