

1

WELCOME!

TO THE MOAKLEY PARK VISION PLAN OPEN HOUSE



GREENOVATE CITY OF BOSTON



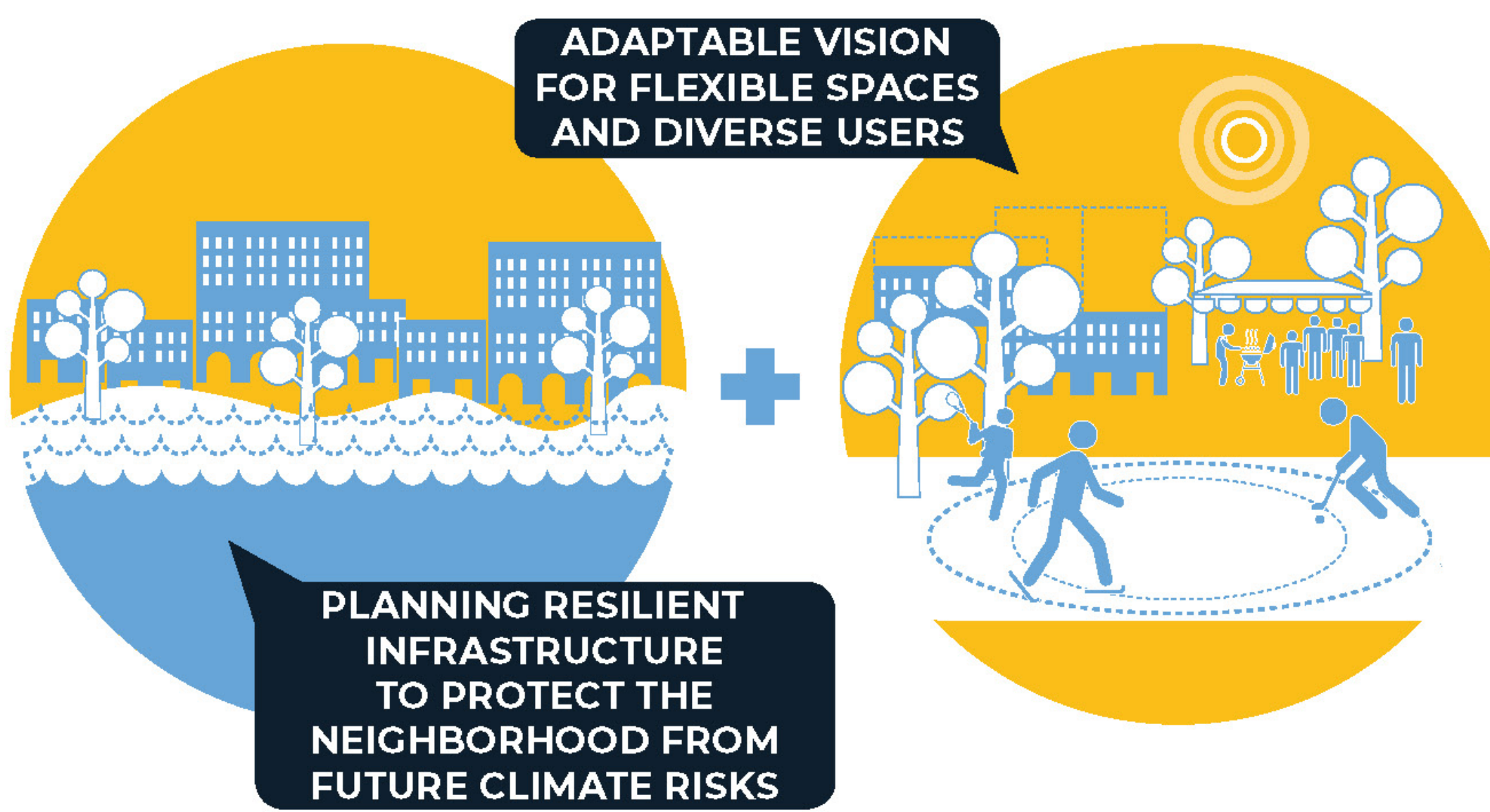
Boston Parks and Recreation is developing a comprehensive Vision Plan for the future of Moakley Park that is vibrant and resilient. The Moakley Park Vision Plan seeks to create a comprehensive long-term plan which balances outdoor recreational needs and community gathering spaces, with protection against climate-change impacts such as flooding from increased rainfall and sea level rise. The plan will provide a vision for programmatic development of the park that ensures a diverse and balanced mix of uses, increases active recreational opportunities, cultural amenities and safety. At the same time, it will consider how the design of the park can help increase the neighborhood's resilience against coastal flooding and reduce the impact of rainfall on active recreational fields.

The planning process itself seeks to stimulate meaningful and inclusive community engagement and identify both a long-term design approach to the park that encourages a wide range of users as well as early 'catalyst' projects and partnerships to help promote and sustain future park renovation projects. The vision will seek to increase connectivity between Moakley Park and adjacent neighborhoods as well as Carson Beach and The Boston Harbor Islands, just steps away.

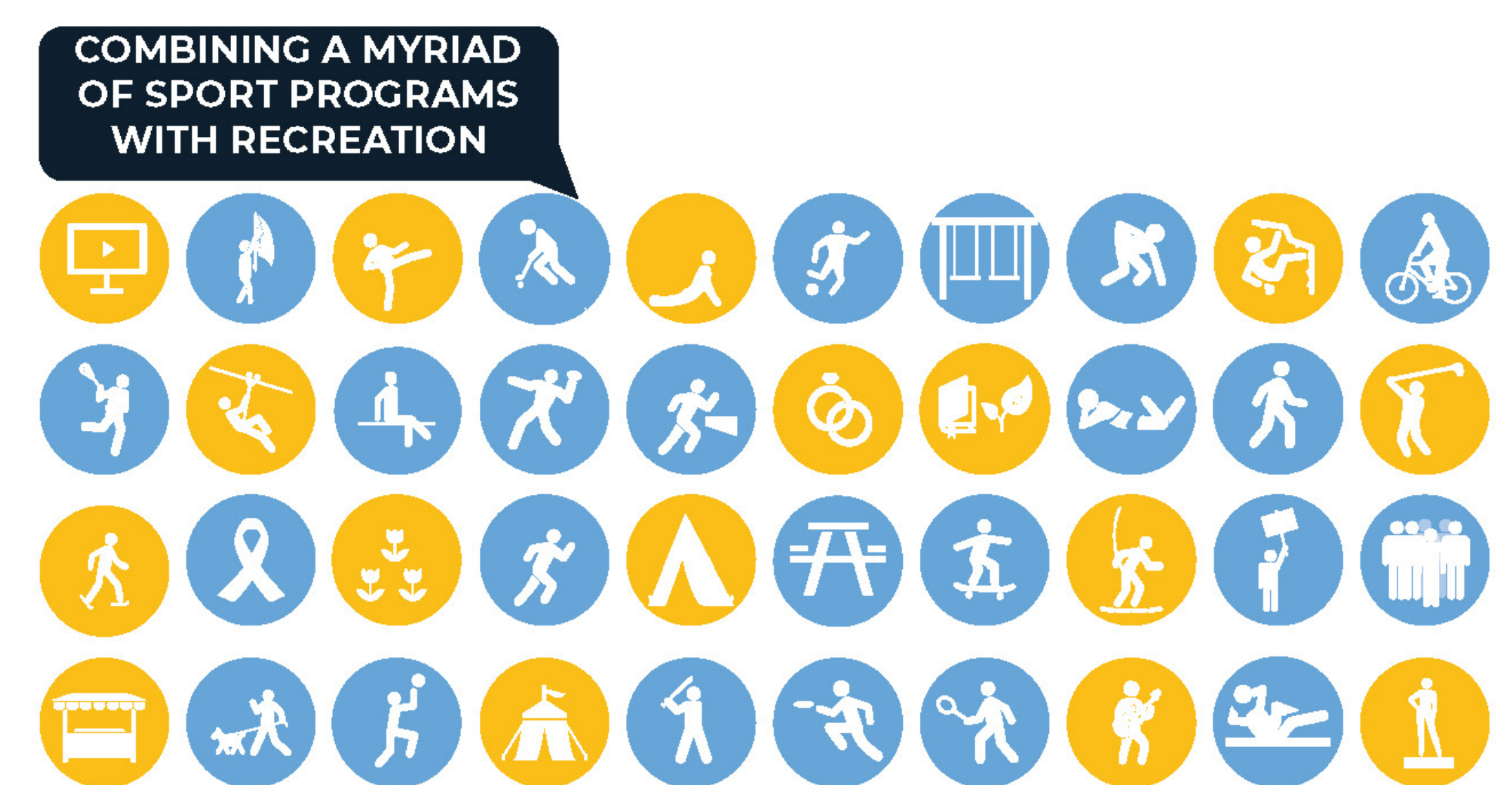
ACCESSIBLE FOR ALL LOCAL + LEGACY



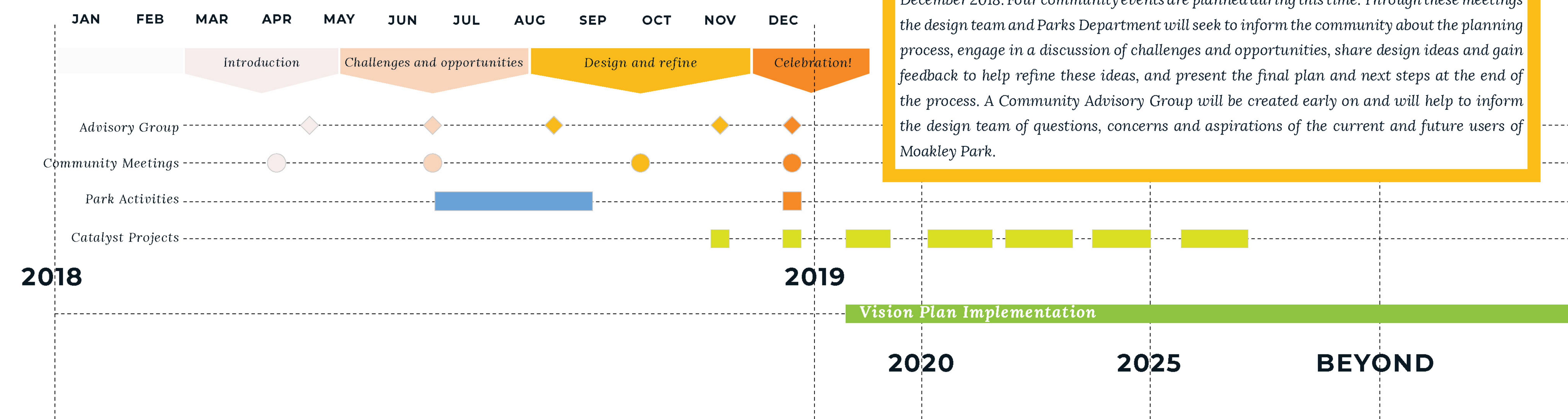
RESILIENT NEIGHBORHOOD ADAPTIVE + FLEXIBLE



DIVERSE PROGRAM BALANCE



FROM VISION TO REALITY

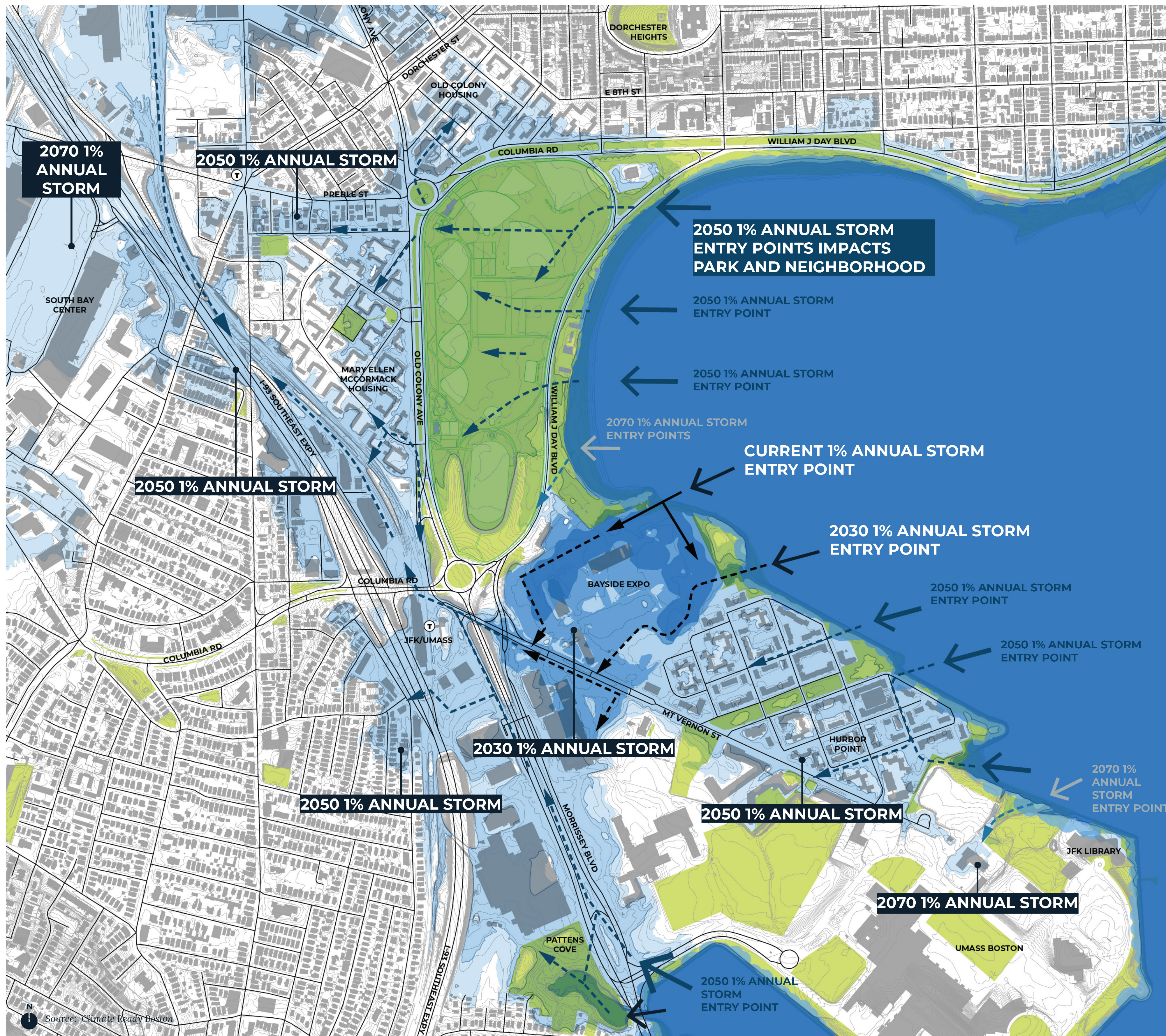


The Vision Plan process spans the course of the year, beginning in March and ending in December 2018. Four community events are planned during this time. Through these meetings the design team and Parks Department will seek to inform the community about the planning process, engage in a discussion of challenges and opportunities, share design ideas and gain feedback to help refine these ideas, and present the final plan and next steps at the end of the process. A Community Advisory Group will be created early on and will help to inform the design team of questions, concerns and aspirations of the current and future users of Moakley Park.

2

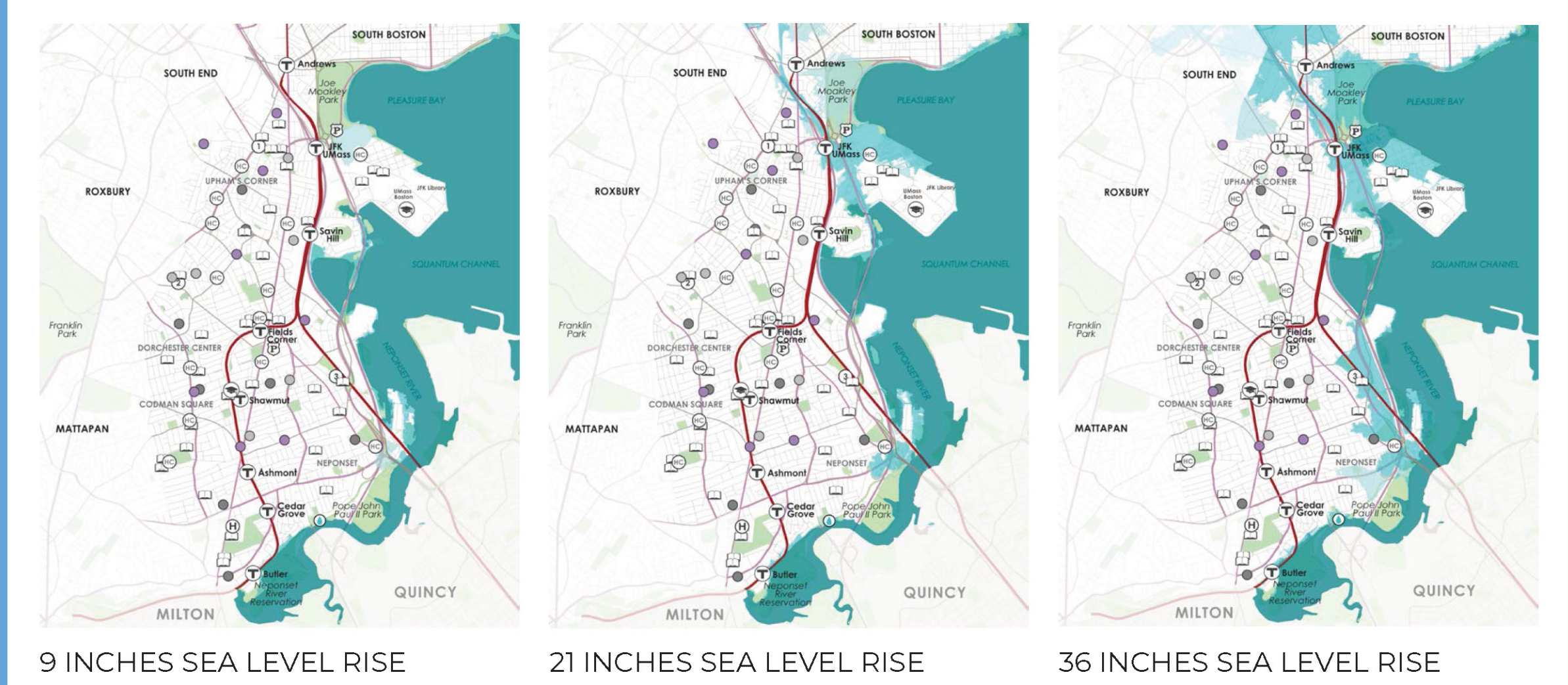
DISCOVER!

HOW CLIMATE CHANGE EFFECTS THE PARK

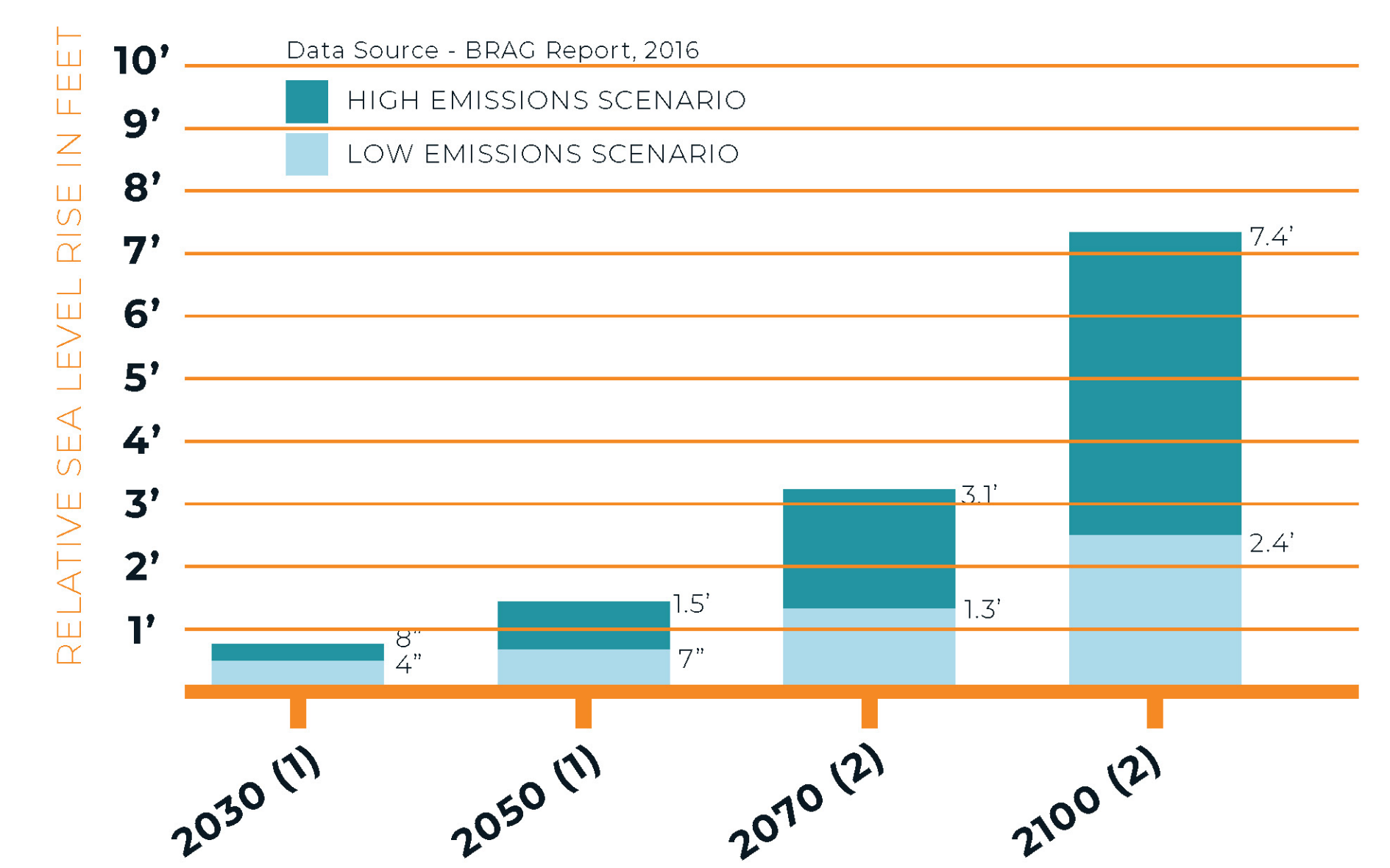


Climate Ready Boston studied the future impacts of climate change on Boston: sea level rise, extreme precipitation and temperature increase. Moakley Park and nearby areas were identified as being at risk to flooding in the near- and long-term future due to climate change. As part of our efforts to integrate climate resiliency into all city planning efforts, we have the opportunity to build a more resilient future for this area of Boston through the Moakley Park Vision Plan.

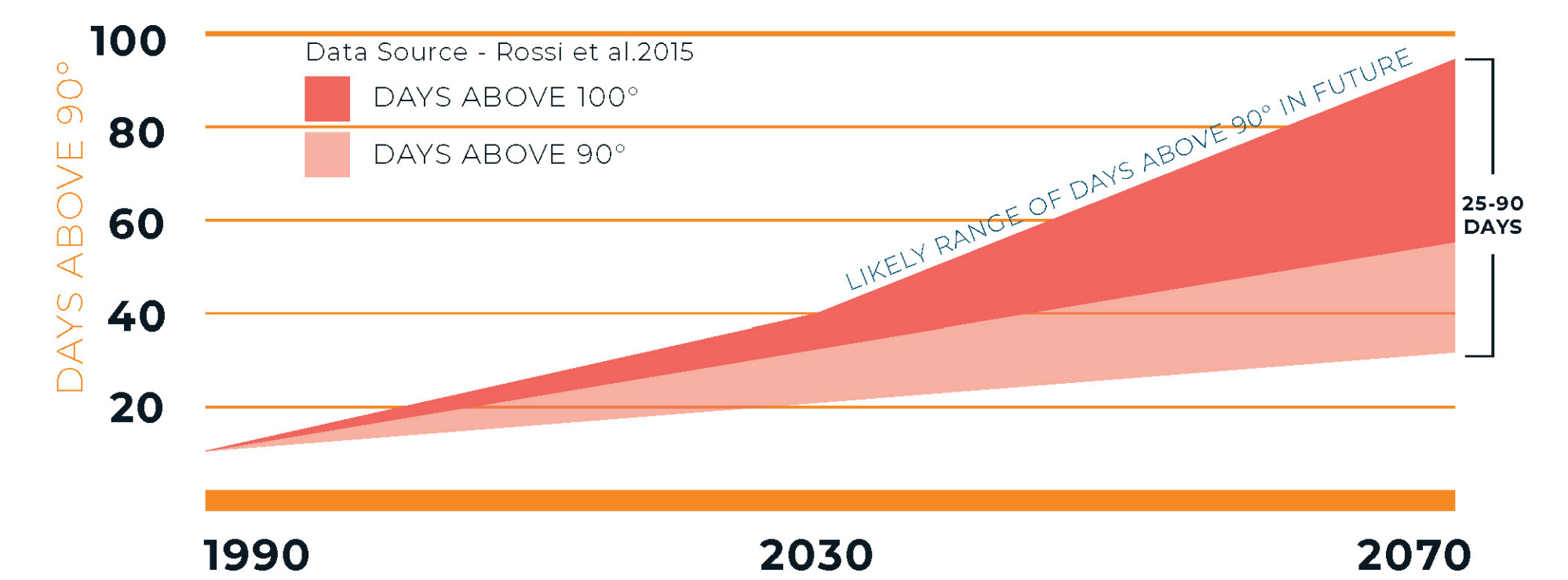
THREATS TO CRITICAL INFRASTRUCTURE



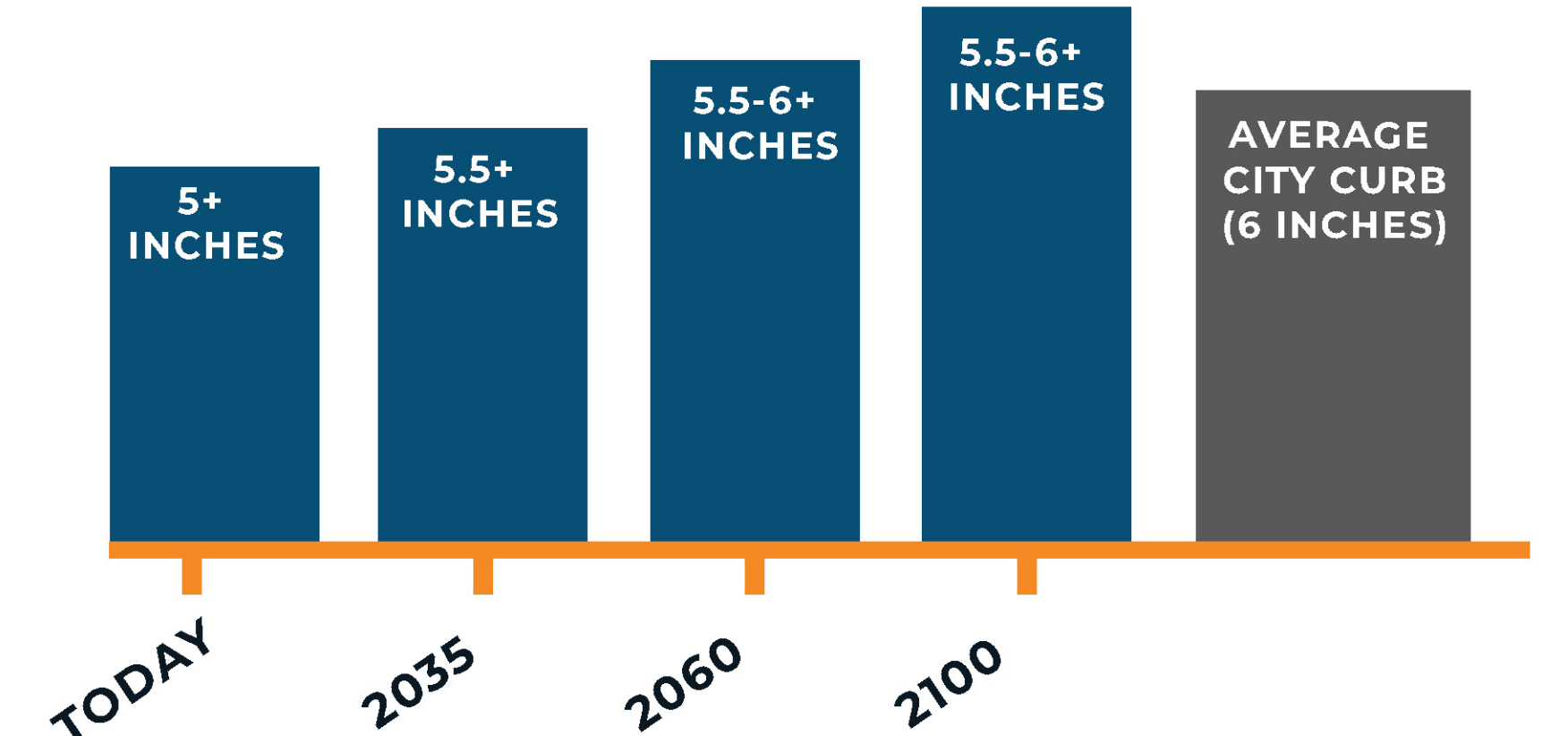
SEA LEVELS IN BOSTON WILL CONTINUE TO RISE



THE NUMBER OF VERY HOT DAYS WILL INCREASE



STORMWATER FLOODING WILL INCREASE



RECENT FLOOD CONDITIONS AROUND MOAKLEY PARK

The high water mark during the March 2018 Nor'Easter Riley was nearly equal to a 100-year storm event. During March 2018 Nor'Easter Riley - Boston reached its 3rd highest tide observed since records began back in 1928 highest tide observed was 11.3 ft with the recorded storm surge of 3 ft.

MOAKLEY PARK
March 2018



BAYSIDE EXPO PARKING
March 2018



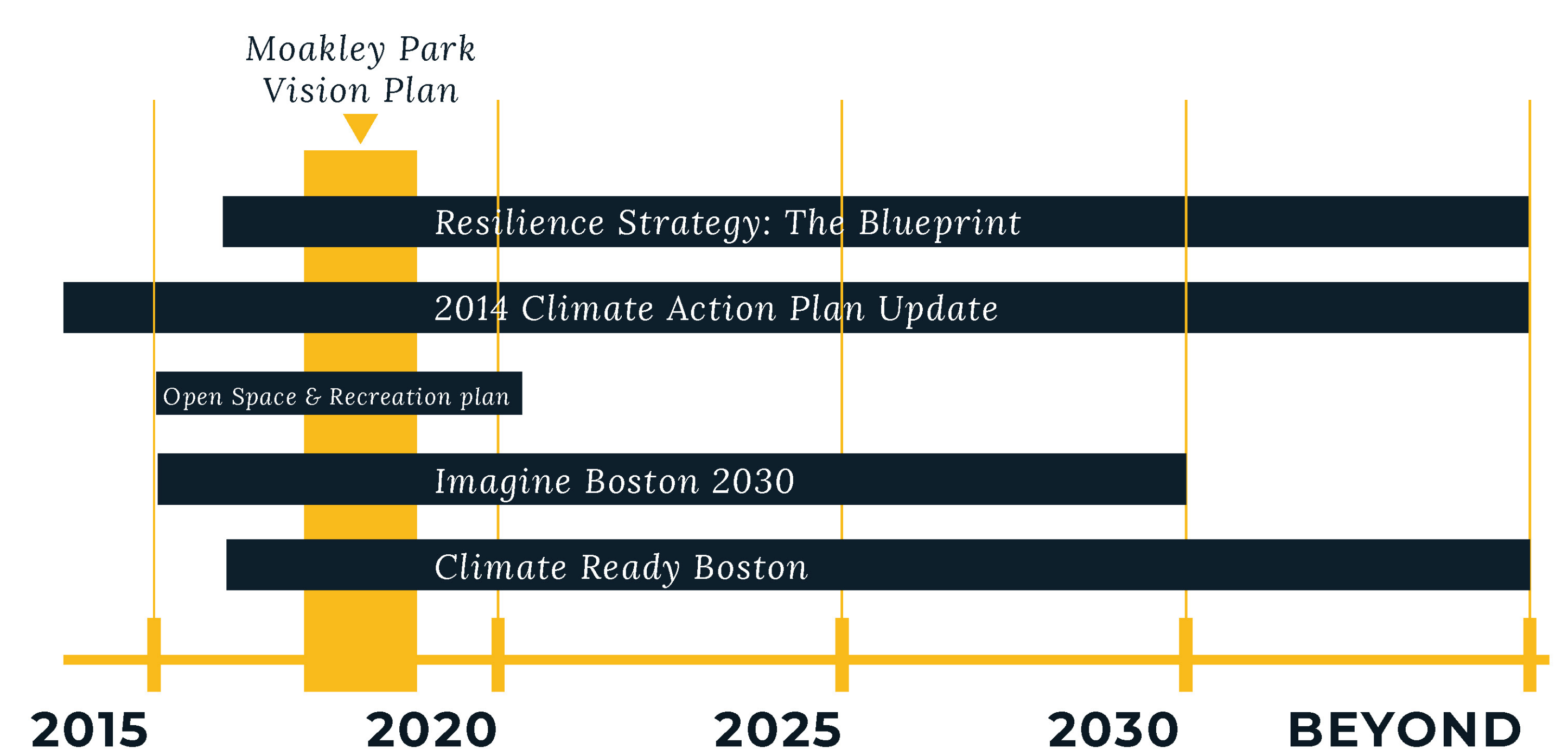
MORRISSEY BLVD
March 2018



DAY BLVD
March 2018



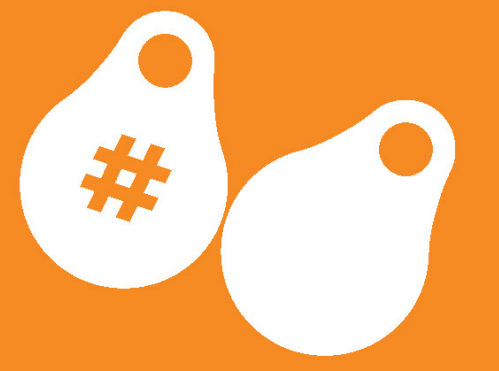
WHERE DO WE FIT IN?



3 MAP! YOUR DAY AT MOAKLEY PARK

STEP 1

Retrieve your 4 tags that have your visitor number on one side, and are blank on the other.



STEP 2

Choose one sticker that describes how you typically arrive at the park.



STEP 3

Choose three stickers that describe what you do in the park.



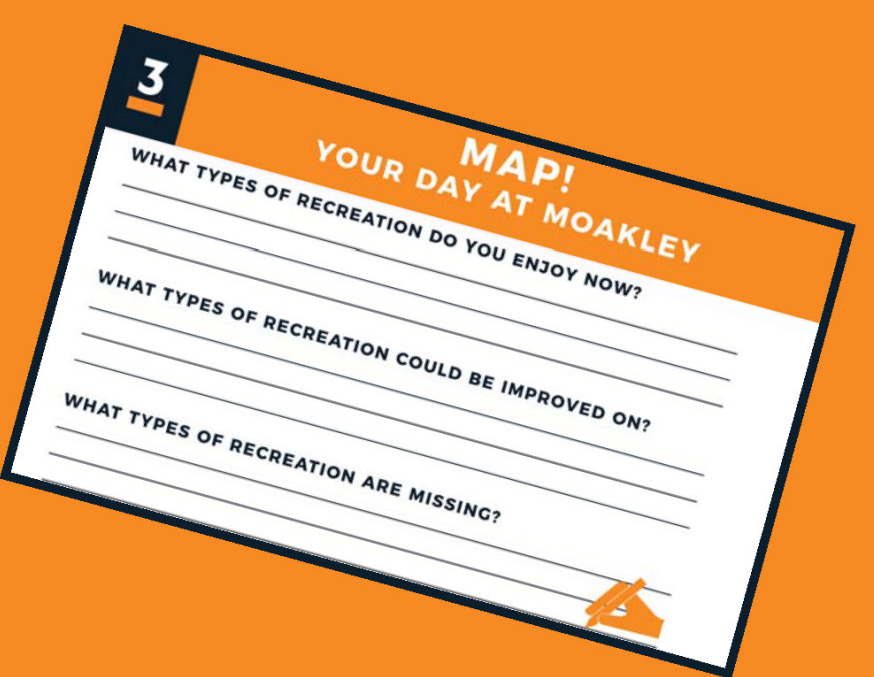
STEP 4

Place those stickers on your tags and pin them onto the map.



STEP 5

Tell us which existing activities you like, would like us to improve, or add to the park.



BONUS!

Choose one of your tags to draw a custom program that we're missing.



ENVISION! YOUR MOAKLEY PARK

WHAT NEW ACTIVITIES WOULD YOU LIKE TO SEE AT MOAKLEY PARK?

STEP 1

Retrieve your 6 tags that have your visitor number on one side, and a priority vote on the other (1st, 2nd, 3rd, 4th, 5th, NO).

1st

3rd

NO

STEP 2

Place your vote tags next to these future activities in the corresponding columns.

2nd

4th

5th

1st 2nd 3rd 4th 5th NO



yoga



martial arts



rentable games



rock climbing



cycling



ice skating



market



restroom



outdoor education



festival



food trucks



public art



outdoor cinema



performing arts



nighttime activities



sports clinics



exercising



winter activities



bocce



volleyball



pickleball



ping pong

	1st	2nd	3rd	4th	5th	NO
yoga						
martial arts						
rentable games						
rock climbing						
cycling						
ice skating						
market						
restroom						
outdoor education						
festival						
food trucks						
public art						
outdoor cinema						
performing arts						
nighttime activities						
sports clinics						
exercising						
winter activities						
bocce						
volleyball						
pickleball						
ping pong						

ARE WE MISSING ANYTHING?

4

ENVISION!

WHAT KINDS OF SPACES
WOULD YOU LIKE TO SEE
AT MOAKLEY PARK?

STEP
1

Take your thumbs up
thumbs down stickers

STEP
2

Place your stickers on
things you like or dislike

SOCIAL & CIVIC



PAVILION

30 empty circles for sticker placement.



COMMUNITY GARDEN

30 empty circles for sticker placement.



DOG PARK

30 empty circles for sticker placement.

UNPROGRAMMED RECREATION



PICNICKING / BBQ

30 empty circles for sticker placement.



MULTI-USE PATHWAYS

30 empty circles for sticker placement.



SKATE PARK

30 empty circles for sticker placement.

PROGRAMMED RECREATION



ARTIFICIAL TURF

30 empty circles for sticker placement.



SLOPED SEATING

30 empty circles for sticker placement.



MULTI-SPORT FACILITIES

30 empty circles for sticker placement.

PLAY



ADVENTURE PLAY

30 empty circles for sticker placement.



WATER PLAY

30 empty circles for sticker placement.



PLAYGROUND

30 empty circles for sticker placement.

ARE WE MISSING ANYTHING?

Large empty box for additional comments.

5

PROTECT!

WE SHOWED YOU THE CLIMATE IMPACTS ON BOARD #2.
NOW LET'S SHOW YOU WHAT WE CAN DO ABOUT IT!

HERE IS A SET OF CRITERIA WE USE TO EVALUATE THE SUCCESS OF OUR DESIGN SOLUTIONS:

DESIGN LIFE AND ADAPTABILITY

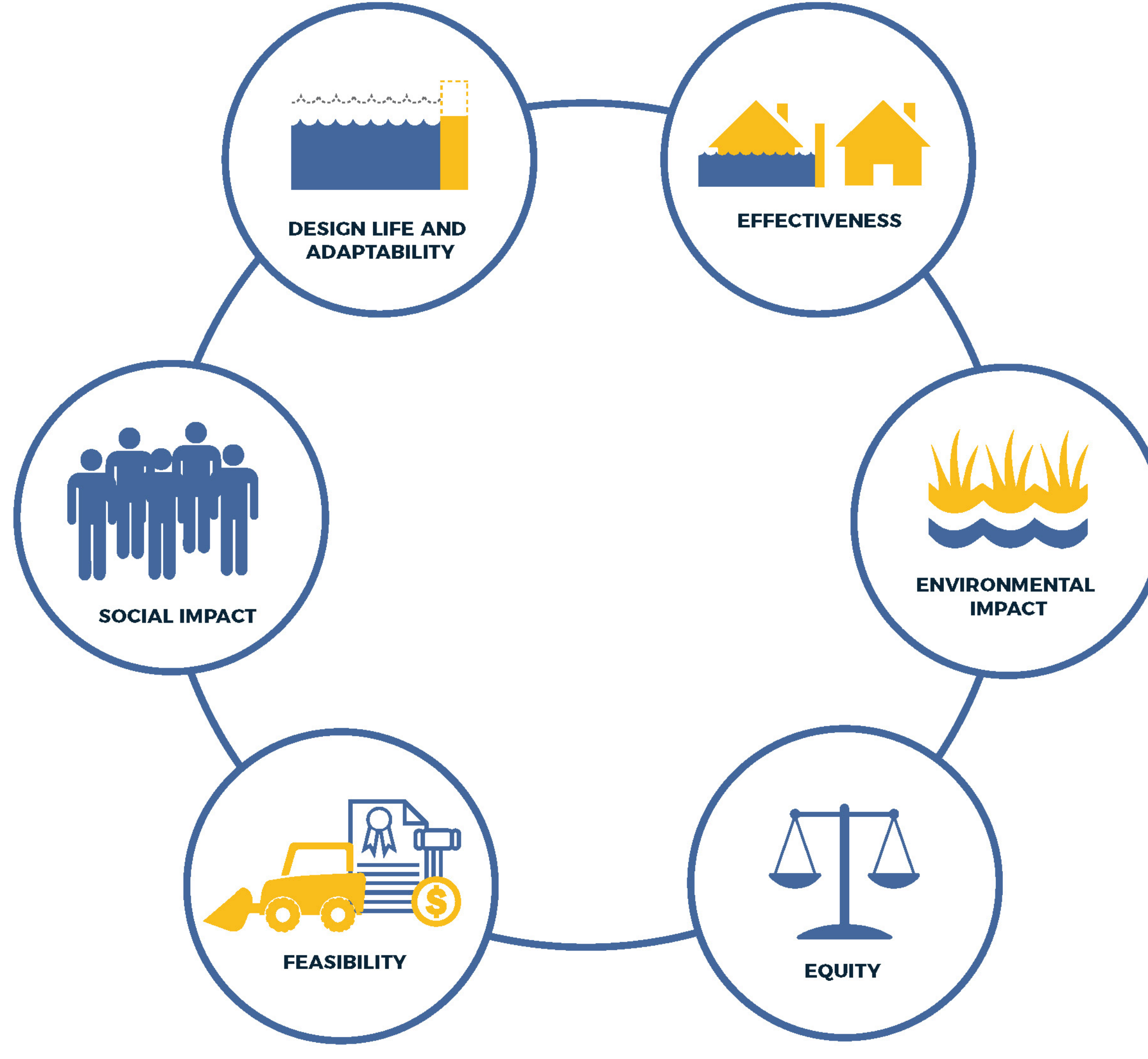
- Design life
- Performance horizon
- Adaptability/flexibility
- Phase-ability and time to implementation
- Maintenance requirements

SOCIAL IMPACT

- Recreational
- Cultural
- Aesthetic

FEASIBILITY

- Stakeholder support
- Constructibility
- Permitting
- Affordability: Cost of construction
- Affordability: Cost of maintenance
- Replicability



EFFECTIVENESS

- Maximum level of protection (% probability / SLR scenario)
- Reduction in flood extent
- Avoided damage and loss
- Residents protected
- Critical assets protected

ENVIRONMENTAL IMPACT

- Water and air quality
- Habitat value
- Human health benefits

EQUITY

- New and equitable access to water
- Educational opportunities
- Community partnerships
- Preservation / addition of open space

COASTAL/ TIDAL

BERM-DUTCH DIKE

TERRACED SEATING

MARSH / WETLAND

FLOODABLE FIELD AND BERM

DUNE / BOARDWALK

FLOOD WALL

STORMWATER/ INLAND

STREET TREES

SWALE

STORMWATER WETLANDS

6

GO BIG!

WE'RE STUDYING PARKS WITH QUALITIES THAT COULD INFORM THE VISION PLAN. WHICH DO YOU LIKE OR DISLIKE?

STEP 1 Take your thumbs up thumbs down stickers

STEP 2 Place your stickers on things you like or dislike



ACTIVE RECREATION

DRAPERS FIELD, LONDON

30 empty circles for sticker placement.



ACTIVE RECREATION

PENN PARK, PHILADELPHIA

30 empty circles for sticker placement.



WATERFRONT

BROOKLYN BRIDGE PARK, NEW YORK CITY

30 empty circles for sticker placement.



WATERFRONT

CHELSEA WATERSIDE PARK, NEW YORK

30 empty circles for sticker placement.



WATERFRONT

CRISSY FIELD, SAN FRANCISCO

30 empty circles for sticker placement.



WATERFRONT

SPRUCE STREET HARBOR PARK, PHILADELPHIA

30 empty circles for sticker placement.



RESILIENT

YANWEIZHOU PARK, CHINA

30 empty circles for sticker placement.



ACTIVE STREET

ROSE FITZGERALD KENNEDY GREENWAY, BOSTON

30 empty circles for sticker placement.



LEGACY PARK

CENTRAL PARK, NEW YORK

30 empty circles for sticker placement.



LEGACY PARK

MILLENNIUM PARK, CHICAGO

30 empty circles for sticker placement.



RECREATIONAL WATERFRONT

GRAND PARK, SOUTH CAROLINA

30 empty circles for sticker placement.



RECREATIONAL WATERFRONT

LOPRESTI PARK, BOSTON

30 empty circles for sticker placement.

ARE THERE OTHER RELEVANT PARKS WE SHOULD BE STUDYING?

Large empty box for writing additional park names.

HELP US GET IN THE LOOP!

ON WHAT IS HAPPENING IN THE COMMUNITY



UPCOMING PARK REPAIRS

Even prior to the start of the Moakley Park Vision Plan, Boston Parks Department has been planning the following park repairs and renovations:

Spring/ summer (Fiscal Year 2018)

- Rubber surfacing repairs at Dottie Curran Playground

Fall work (Fiscal Year 2019)

- Fitzgerald BB field/ King BB field/ Little #1: infield reshaping, pitcher's mound/ home plate shaping, infield mix replenishment, sodding baselines as needed.
- Hockey court renovation.

WHAT ARE WE MISSING?

GET INVOLVED!

Interested in getting involved in future Moakley Park planning? Let us know if you'd like to volunteer for upcoming community events below.

**BE ON THE LOOKOUT FOR
UPCOMING EVENTS!**



<https://www.boston.gov/departments/parks-and-recreation/moakley-park-vision-plan>

