

An aerial photograph of a residential neighborhood, overlaid with a semi-transparent blue filter. The image shows various houses, streets, and trees. A small red square is positioned in the center of the image, marking a specific area. The text 'Improvements to DOWNER PLAYGROUND' is overlaid on the top right of the image.

Improvements to
**DOWNER
PLAYGROUND**

January 24, 2018

Boston Parks and Recreation



AGENDA

1

PROJECT TEAM INTRODUCTION

2

PROJECT OVERVIEW

3

PRESENTATION

4

LISTENING & DISCUSSION

5

CLOSING REMARKS & NEXT STEPS

PROJECT TEAM

Nathan Frazee

Project Manager

Nathan.frazee@boston.gov or 617-961-3167

Marchelle Jacques-Yarde

Outreach Coordinator, External Affairs

marchelle.jacques-yarde@boston.gov or 617-961-3006

Shauna Gillies-Smith

Principal, Ground Inc.

Olivera Berce

Landscape Architect, Ground Inc.

Lena Smart

Landscape Designer, Ground Inc.

Flavio Daveiga

Office of Neighborhood Services

Flavio.Daveiga@boston.gov or 617-635-1880





Hancock Ave

Lawn

Basketball

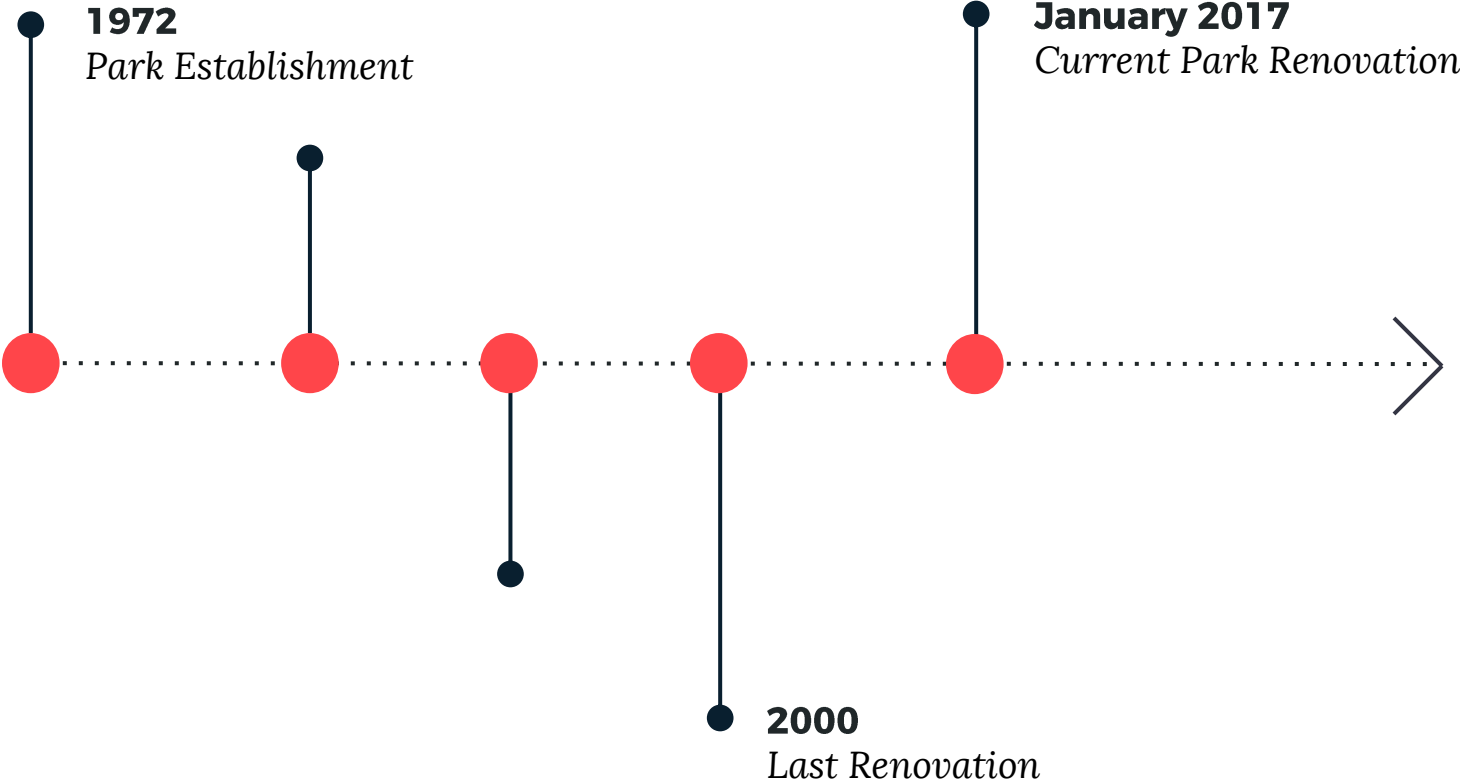
Playground

Stairs

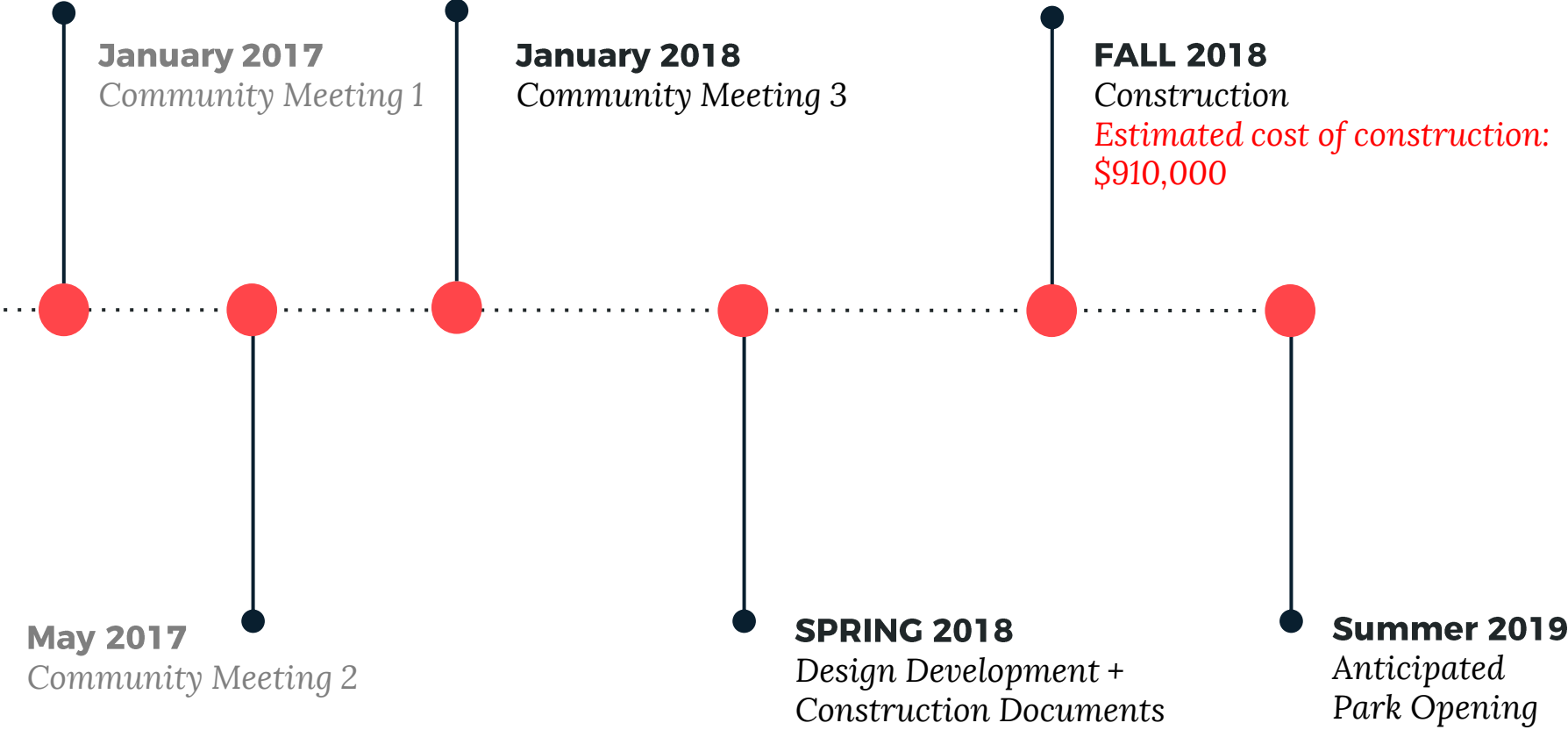
Downer Ave



PARK TIMELINE



PROJECT SCHEDULE & FUNDING





CITY OF BOSTON INITIATIVES

- **Inclusion**
- **Shade**
- **Access to Parks**
- **Drinking / Bottle Filling Stations**
- **Water Play**
- **Climate Resiliency**



PARK & RECREATION GOALS

- **Preserve and protect existing trees**
- **Expand usable park area**
- **Improve universal access**
- **Enhance park visibility**
- **Improve access to parks**
- **Design flexible, multi-functional park spaces**



THE **5** ELEMENTS OF PLAY



SOCIAL/ EMOTIONAL

COOPERATION, DRAMATIC +
IMAGINATIVE PLAY



SEATING + TABLE AREAS, THEMATIC PLAY
ELEMENTS (SHIPS), PLAY HOUSES

PHYSICAL

GROSS MOTOR/ FINE MOTOR SKILLS,
FLEXIBILITY, ACCESSIBILITY, HEALTHY RISK +
VARIETY



DISH SWINGS, MOVEABLE OBJECTS,
SWINGS, MONKEY BARS, BALANCE

SENSORY

TOUCH, VISUAL. AUDITORY, SMELL
VESTIBULAR, PROPRIOCEPTIVE +
INTEROCEPTIVE



PUSH/ PULL ELEMENTS
WATER ELEMENTS, VARIED TEXTURES +
COLORS, SPINNING, MOVEABLE OBJECTS,
ROCKING

COGNITIVE

CREATIVITY, SENSE OF ACCOMPLISHMENT,
PROBLEM-SOLVING, CAUSE + EFFECT, RISK
ASSESSMENT



INTERACTIVE WATER ELEMENTS, ROPE
CLIMBER, LINKED PLAY ELEMENTS

COMMUNICATION

DEVELOPMENT OF RECEPTIVE + EXPRESSIVE
LANGUAGE



TALK TUBES, SLIDES, THEMATIC PLAY
ELEMENTS, TRIKE TRACK, SEE SAWS

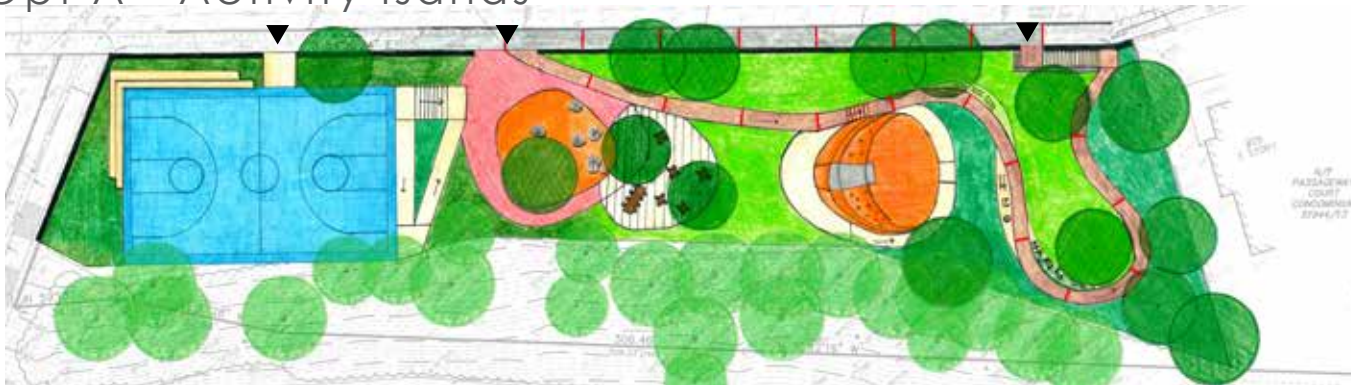
Downer Avenue Playground Community Meeting #3

January 24, 2018

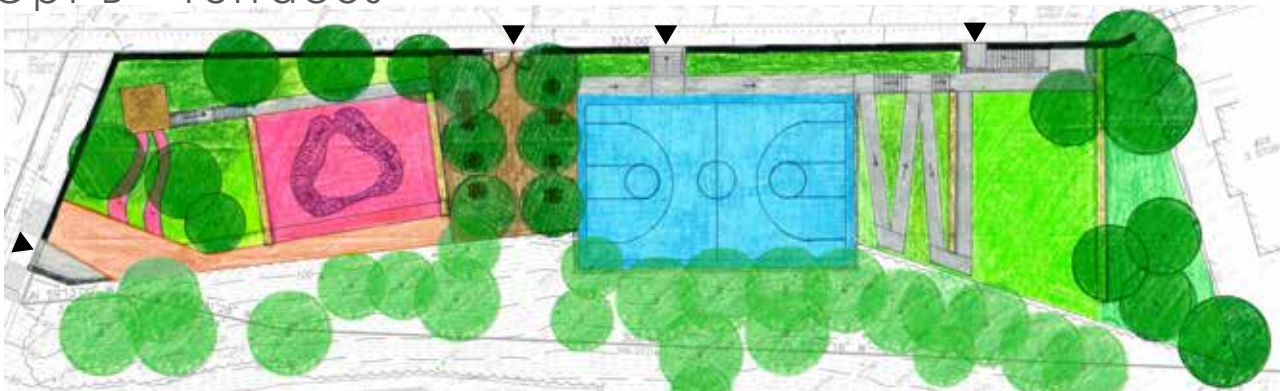


Previous Site Plans, May 2017

Opt A - Activity Islands



Opt B - Terraces



Opt C - Plateau



Comments from Previous Meeting, May 2017

- **OPEN PARK** as much as possible to Downer Avenue
- Include **DOG PARK** at the North-West edge of park
- Include **ADULT FITNESS** stations
- Remove full basketball court. Replace with a half basketball and smaller **FLEXIBLE SPACE**.
- Make the existing Hancock Stair more **ACCESSIBLE** and **VISIBLE**
- Add **SAFETY** and **DECORATIVE** lighting.

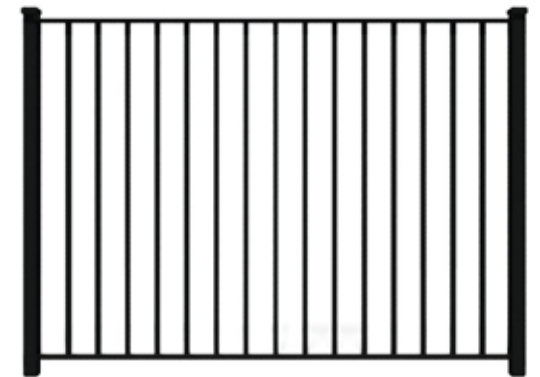
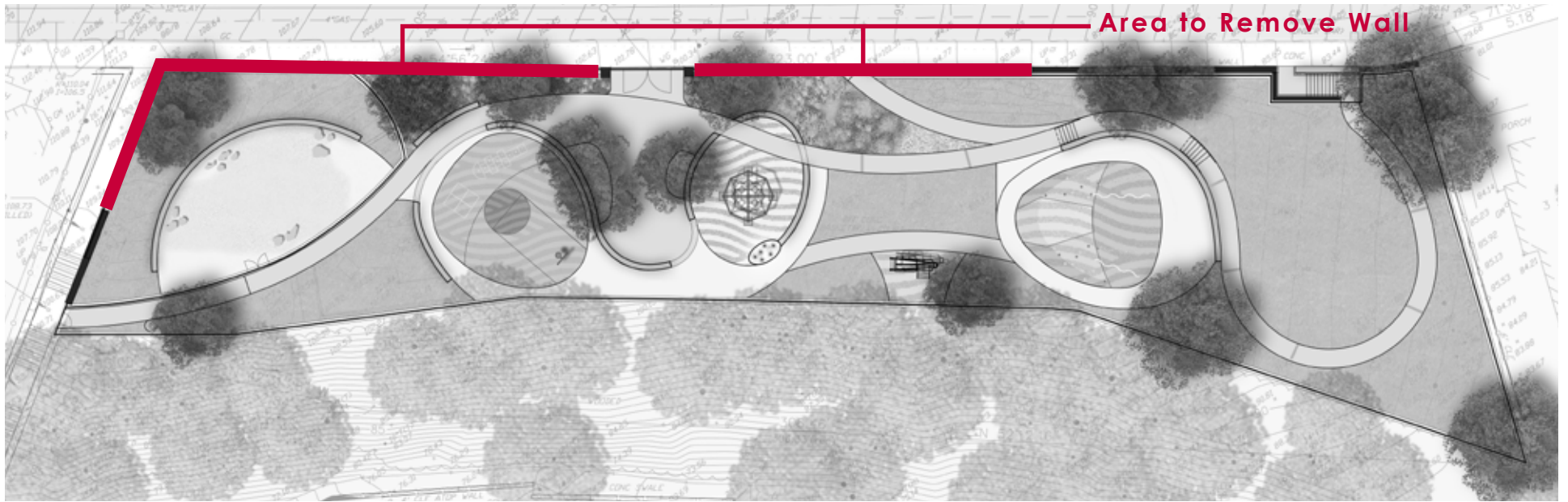
Overall Site Plan



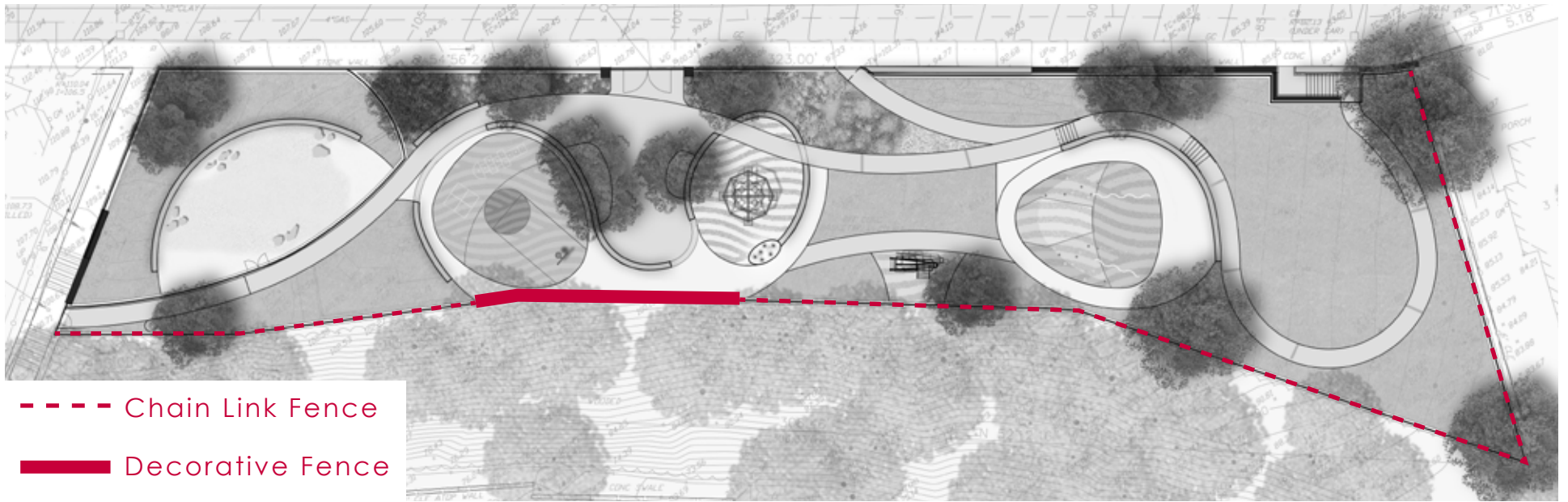
- ① Dog Run - 1,700 SF
- ② Flexible Athletic and Game Court - 1,300 SF
- ③ Seating Area
- ④ Community Gardens
- ⑤ Small Play Area- 900 SF
- ⑥ Splash Pad
- ⑦ Central Play Lawn - 1,800 SF
- ⑧ Fitness Station
- ⑨ Hillside Play Area- 1,000 SF
- ⑩ Open Lawn



Removal of Wall



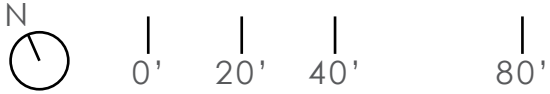
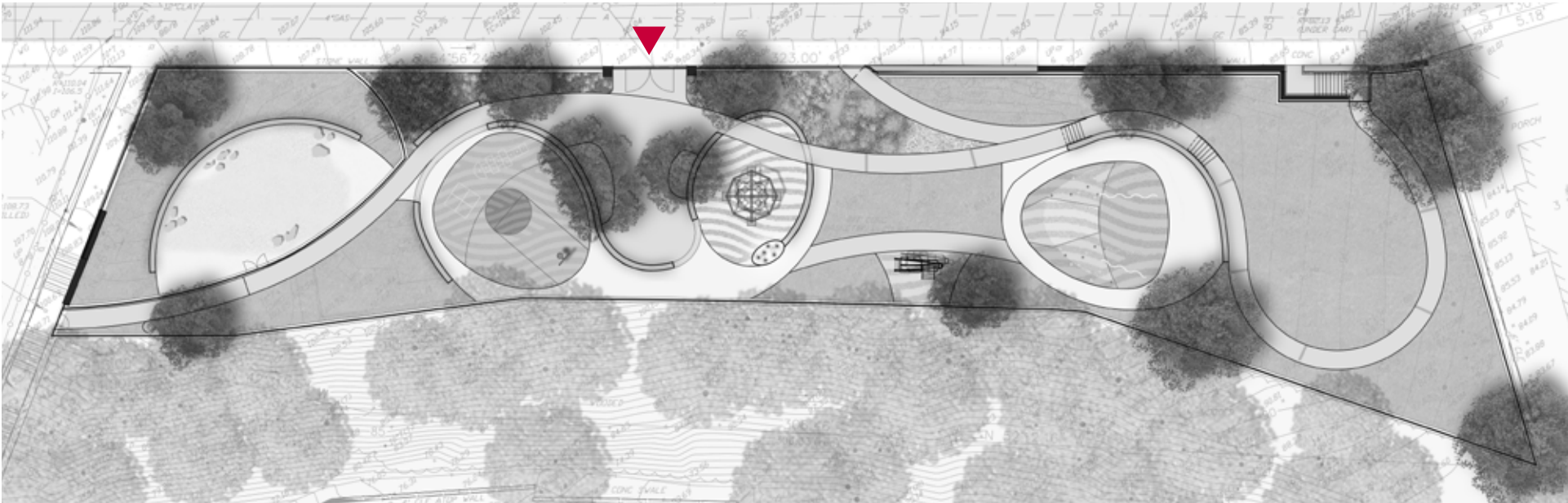
Decorative Accent Fence



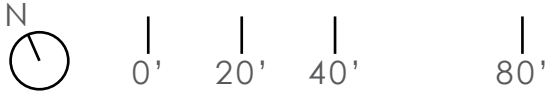
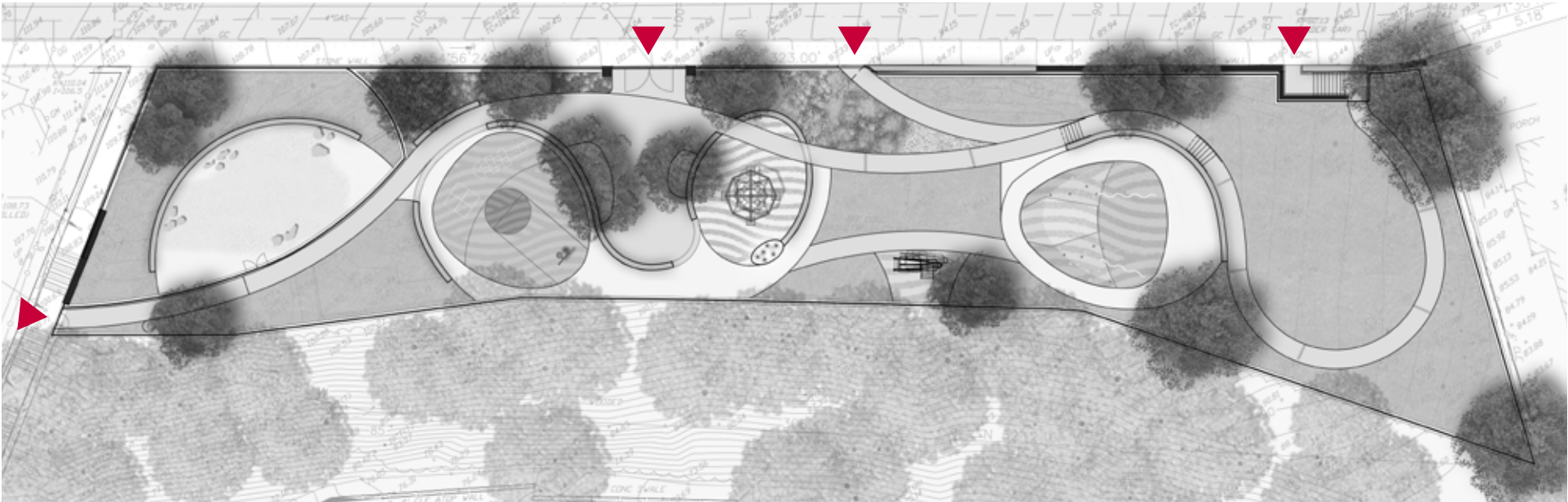
- Chain Link Fence
- Decorative Fence



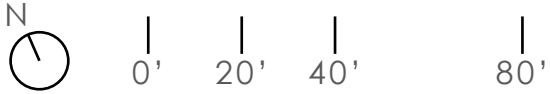
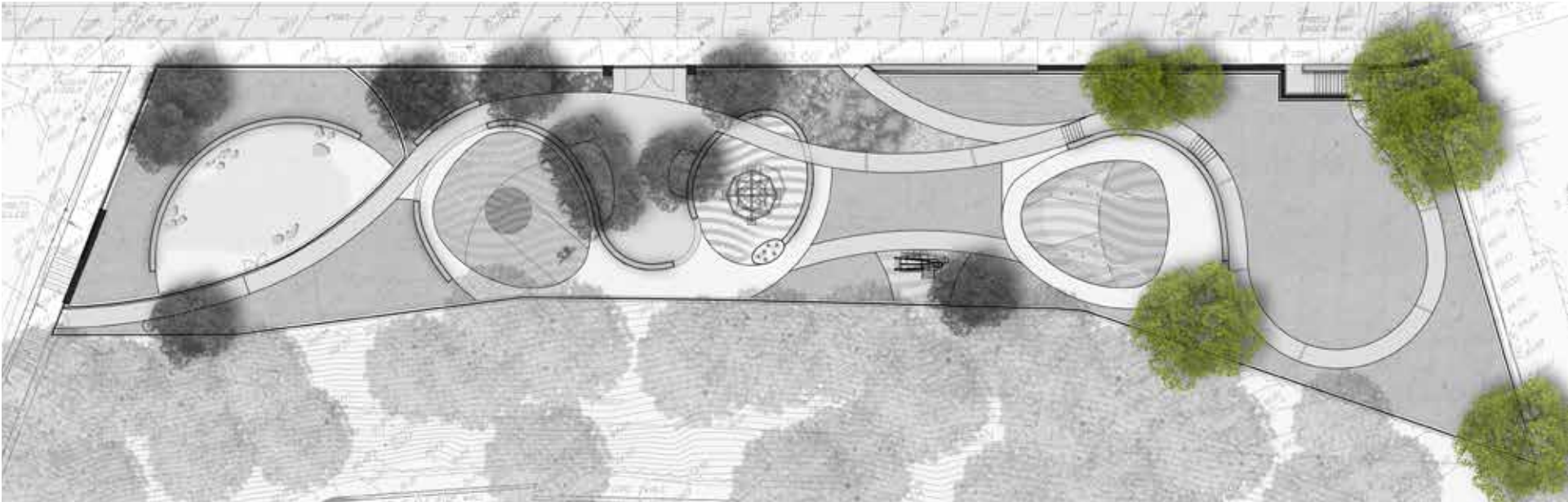
Park Entrance - Existing



Park Entrances - Proposed



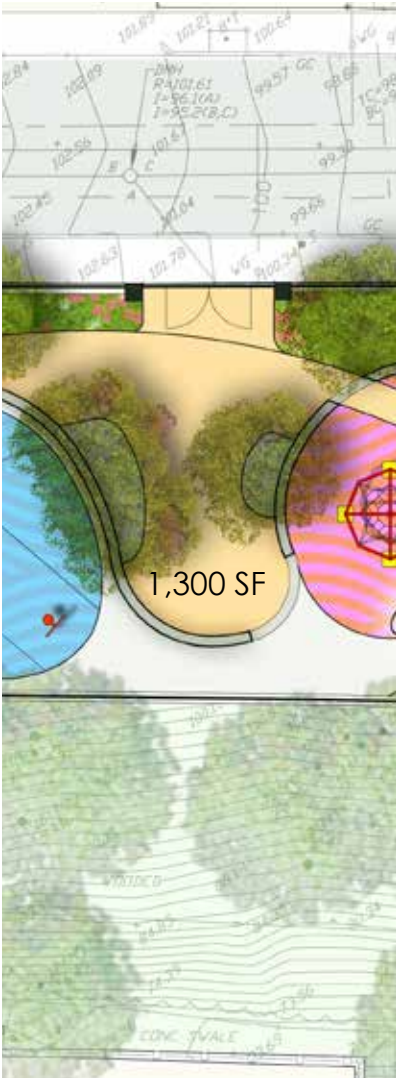
Existing Trees to Remain



Dog Park

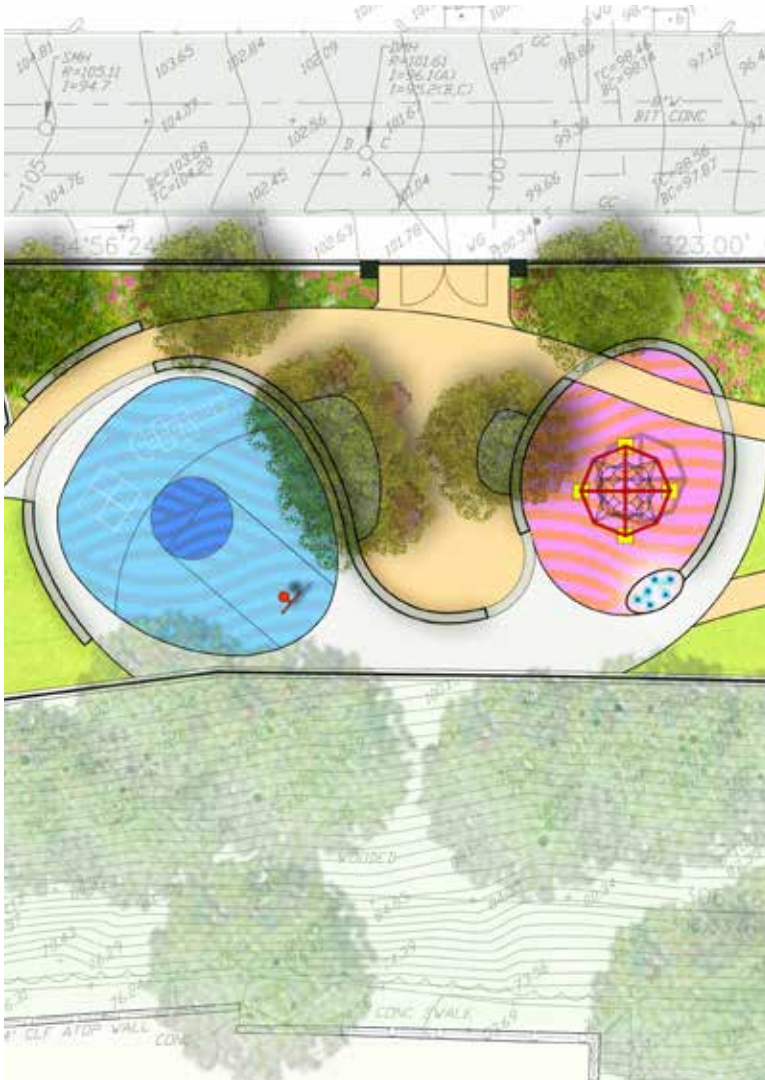


Seating Area

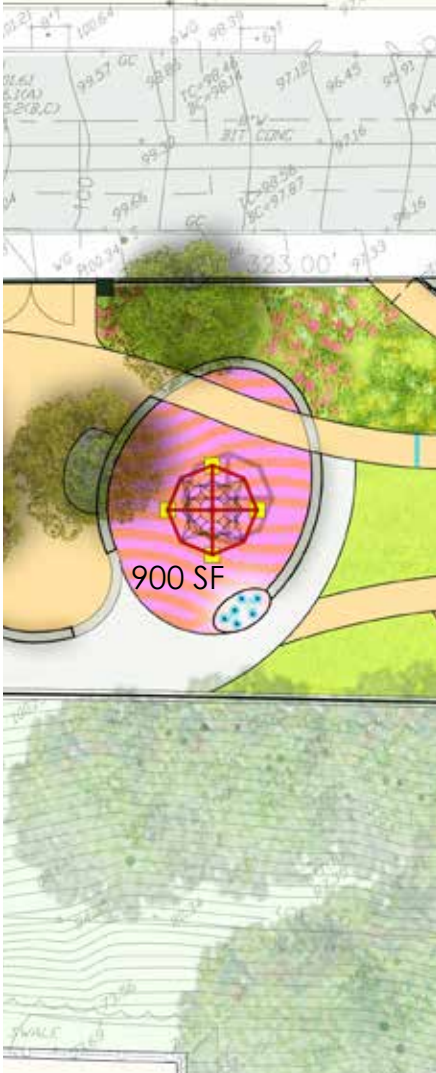


Entry Play Area

Multi-Use Skating Wall



Small Play Area



OPT 1 - Hybrid/Sculptural Structures



OPT 2 - Rope Climber



OPT 3 - Traditional Post and Platform



Small Play Area

OPT 1 - Hybrid/Sculptural Structures



Small Play Area

OPT 2 - Rope Climber



Small Play Area

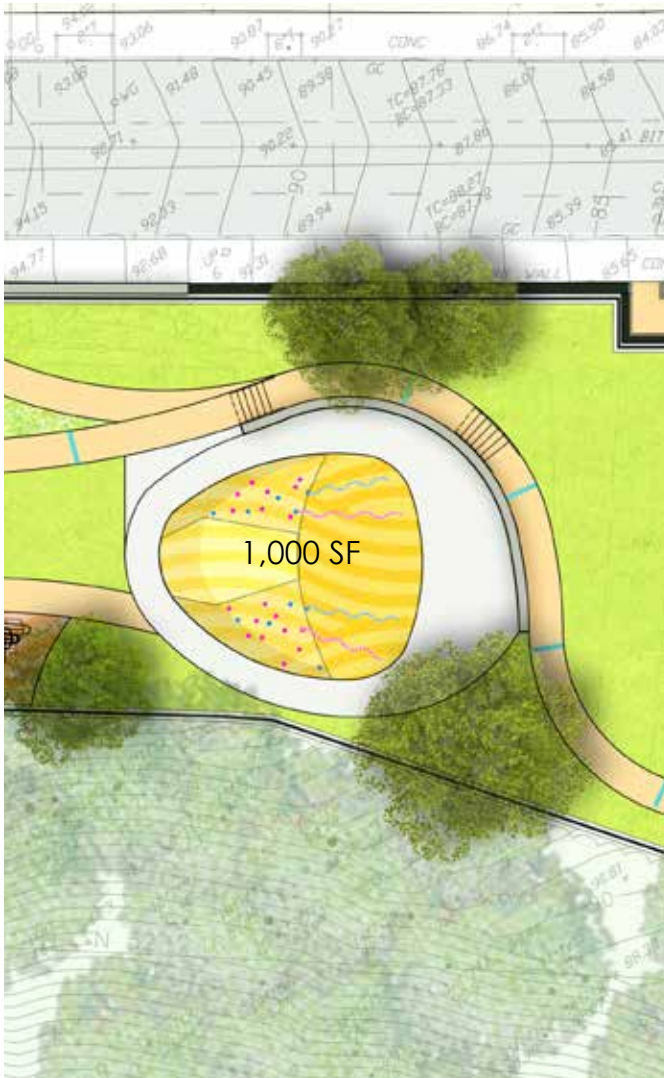
OPT 3 - Traditional Post and Platform



Fitness Station



Hillside Play Area



OPT 1 - Slide and Climb



OPT 2 - Swing



Hillside Play Area

OPT 1 - Slide and Climb



Hillside Play Area

OPT 2 - Swing



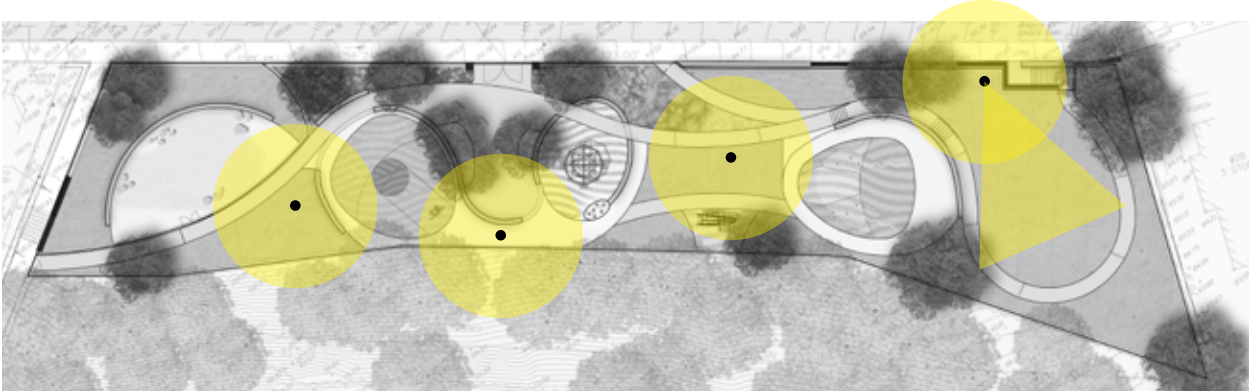
Open Lawn



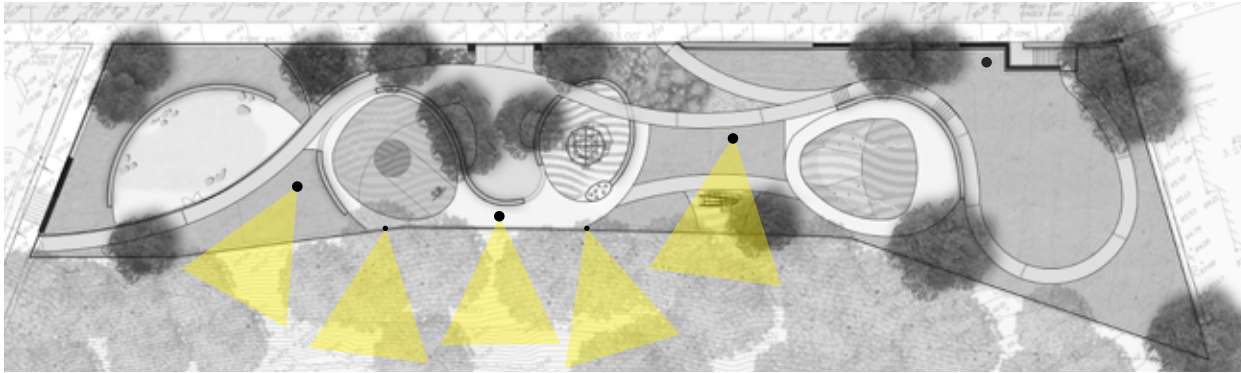
Lighting Ideas

Overall Lighting

Light Poles



Accent Forest Lighting





LISTENING & DISCUSSION

Help us build great parks.
Let us know what matters to you.



THANK YOU!

Nathan Frazee, Project Manager
nathan.frazee@boston.gov or 617-961-3167

Marchelle Jacques-Yarde, Outreach Coordinator, External Affairs
marchelle.jacques-yarde@boston.gov or 617-961-3006

Flavio Daveiga, Office of Neighborhood Services
Flavio.daveiga@boston.gov or 617-635-1880

For questions, maintenance requests or concerns
regarding any of our parks contact 311

BOS:
311



January 24, 2018
Boston Parks and Recreation

