



Improvements to

Paul Revere Mall The Prado

Community Meeting #2

10.19.17

Boston Parks and Recreation



AGENDA

- 1 **PROJECT TEAM INTRODUCTION**
- 2 **PROJECT OVERVIEW**
- 3 **PRESENTATION**
- 4 **LISTENING & DISCUSSION**
- 5 **CLOSING REMARKS & NEXT STEPS**

Project Team

Allison Perlman

Allison.Pperlman@boston.gov or 617-961-3035

Marchelle Jacques-Yarde

Outreach Coordinator, External Affairs

marchelle.jacques-yarde@boston.gov or 617-961-3006

Kyle Zick

Kyle Zick Landscape Architecture, Inc.

Maria Lanza

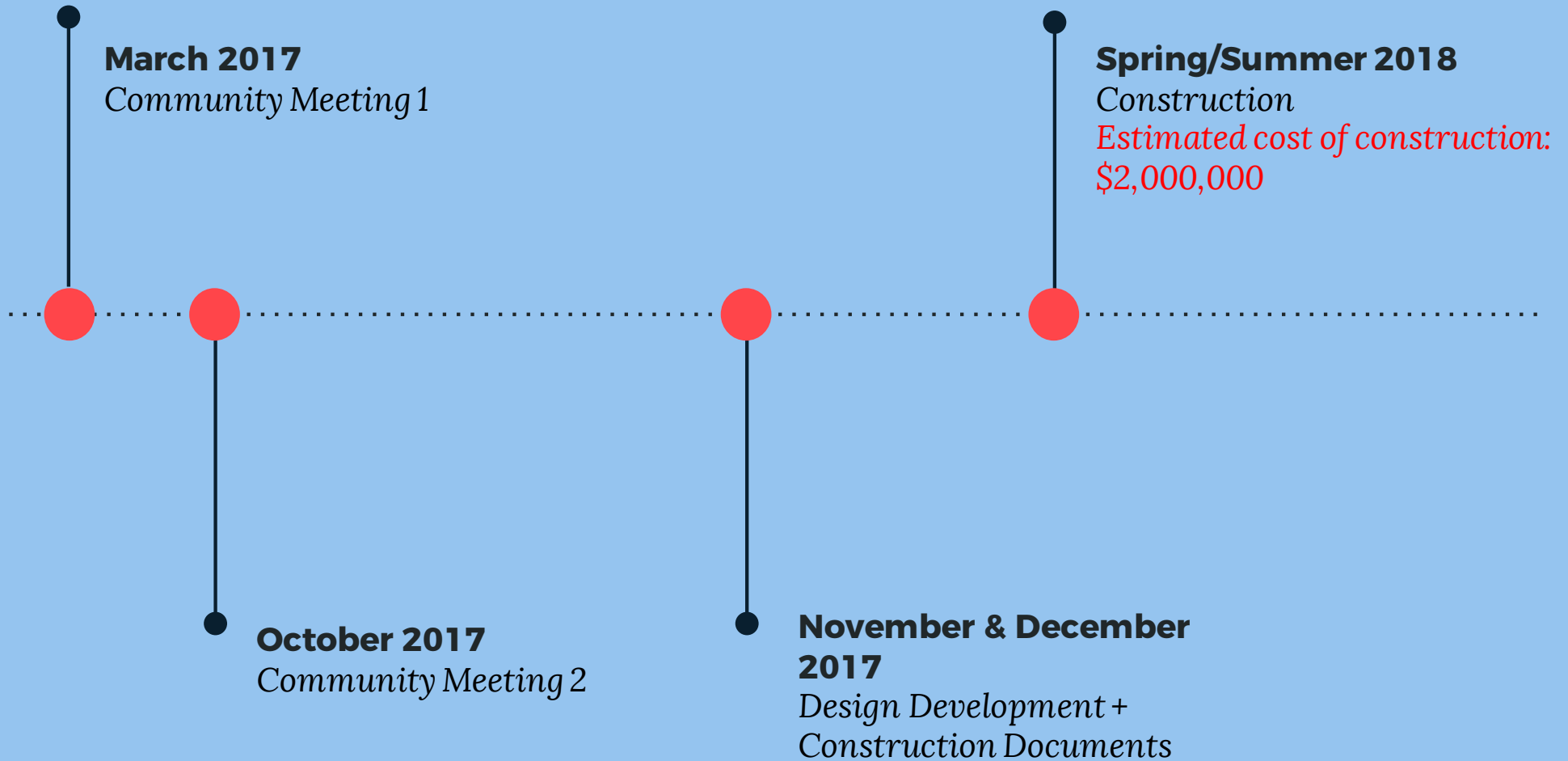
Office of Neighborhood Services

Maria.Lanza@boston.gov or phone number 617-635-4987

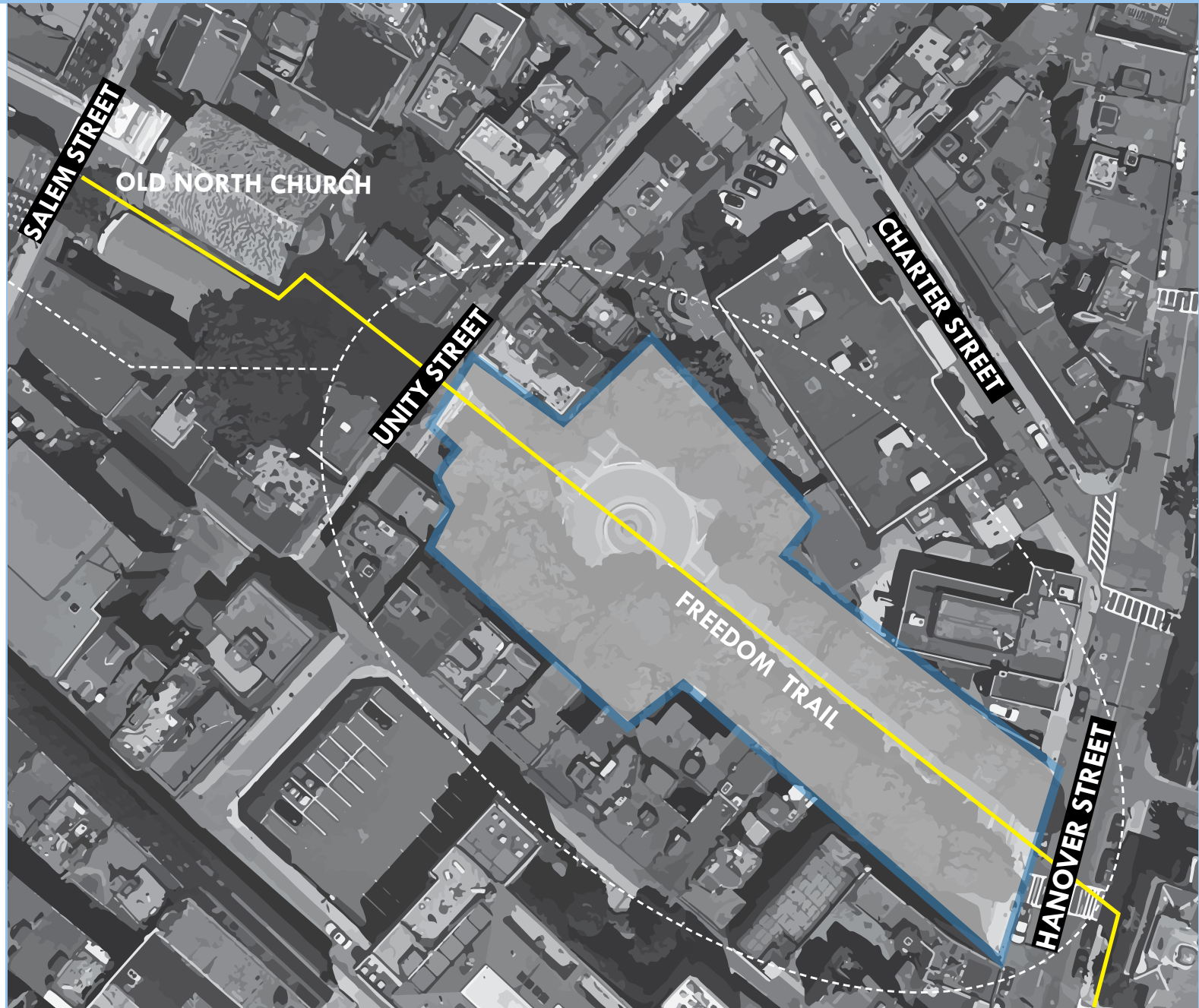
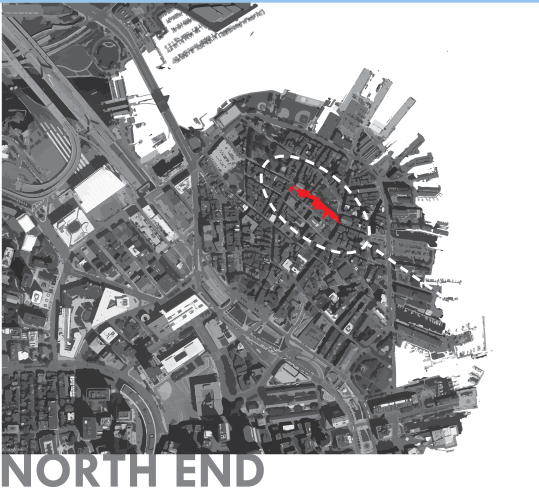


Project Schedule & Funding

*Construction timing contingent on availability of funding through the White Fund



Project Overview



Project Overview

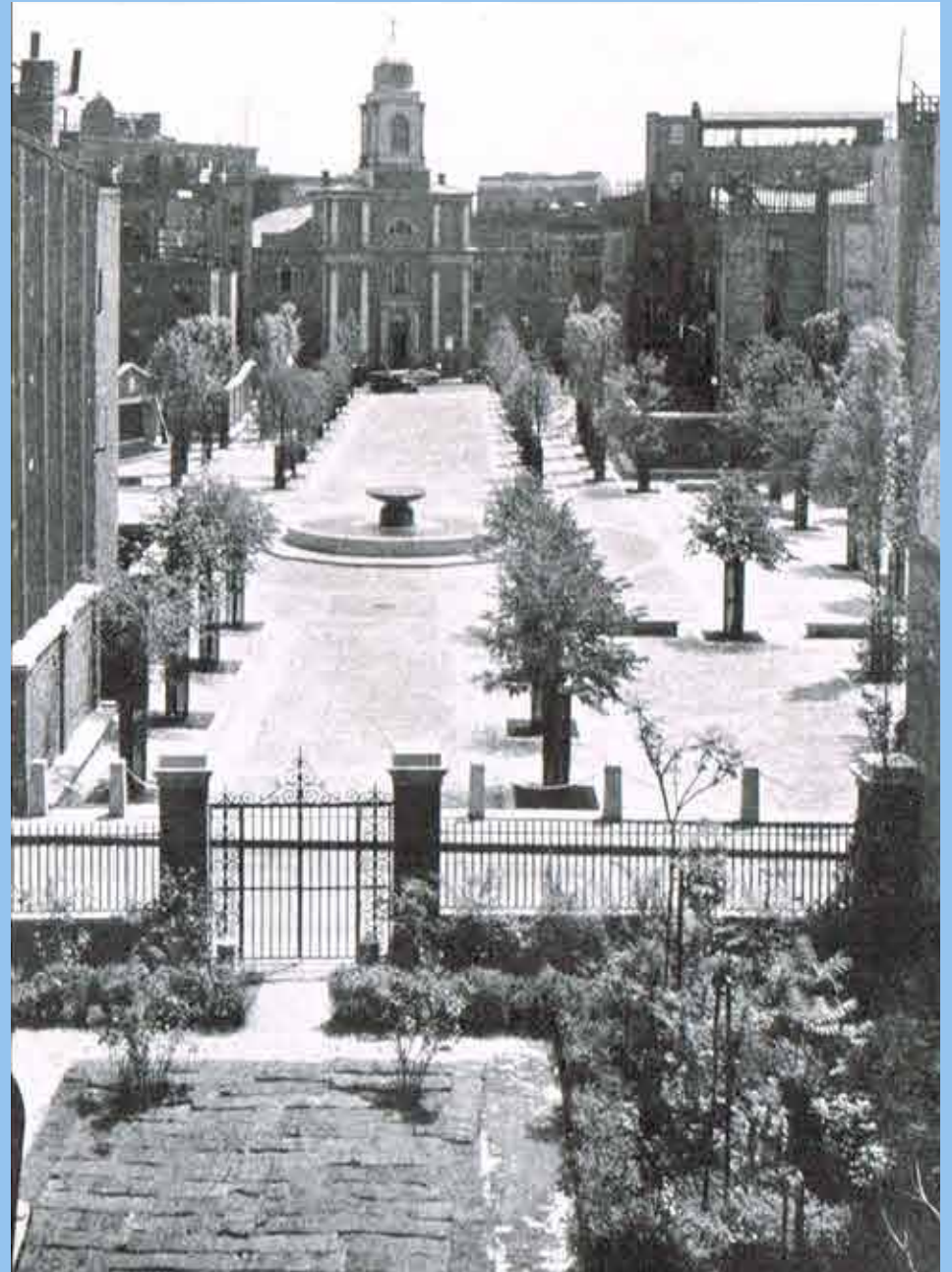
- Preserve and Protect/Existing Trees
- Expand Usable Park Area
- Improve Universal Access
- Improve Park Access
- Enhance Park Visibility
- Improve Neighborhood Connectivity/Programming
- Design Flexible, Multi-functional park spaces
- Site Drainage
- Fountain Operation
- Conservation of Historic Features

Site Analysis

History & Context

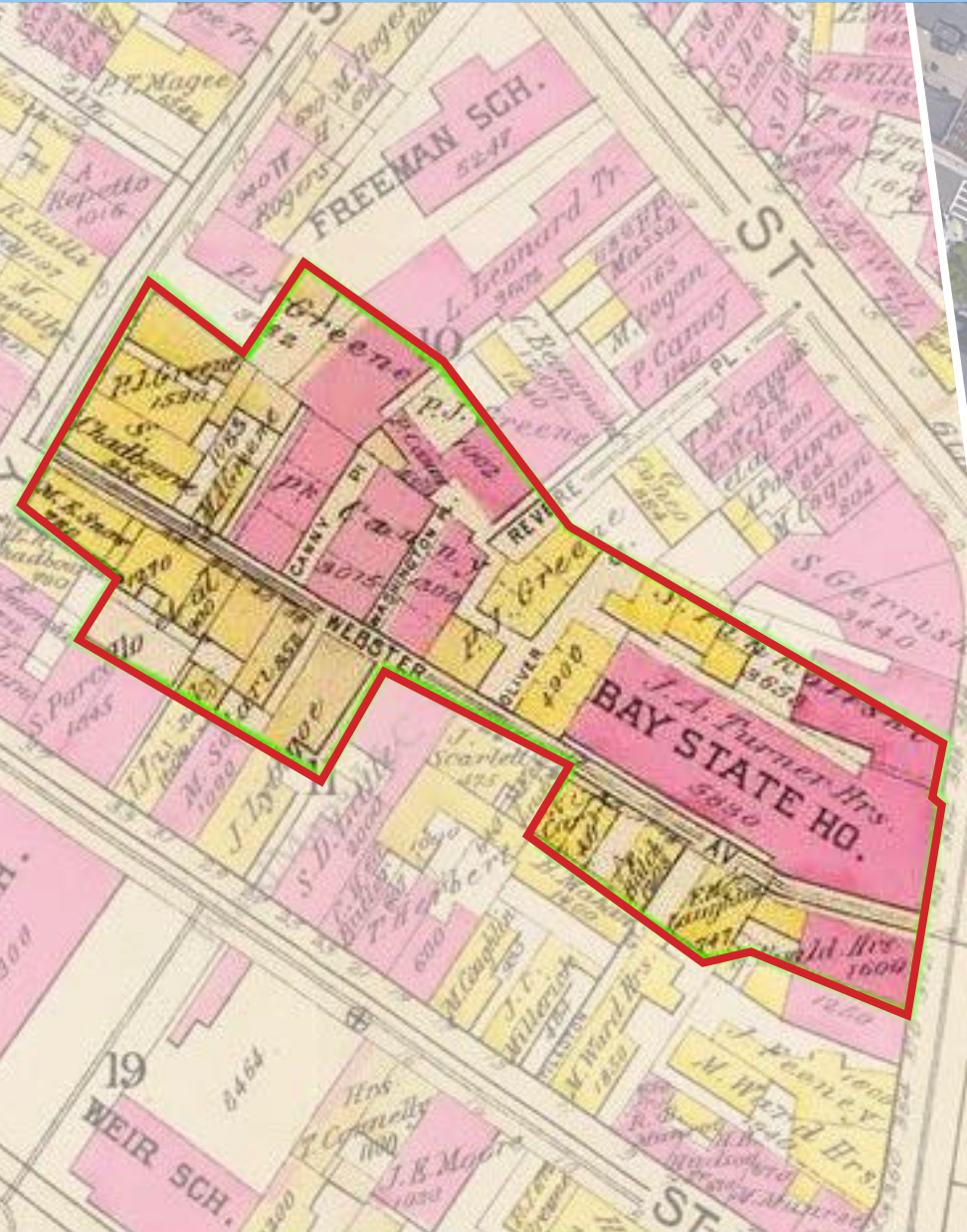


Webster Avenue, razed to create the Prado



Newly Constructed Prado

History & Context



Site Analysis
Access & Accessibility



Site Analysis
Amenities



Site Analysis
Amenities





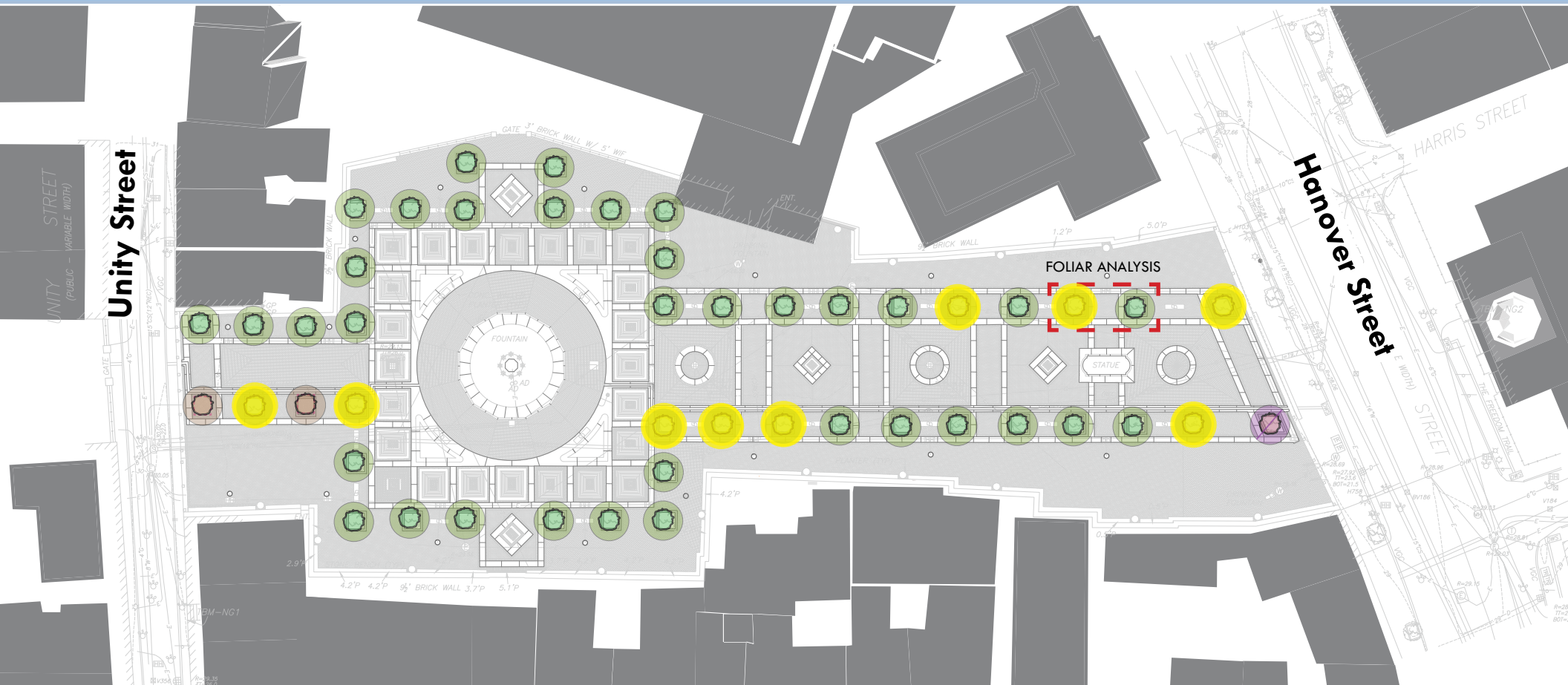
•Project Overview

Preserve and Protect/Existing Tree

- 
- 
- Expand Usable Park Area
 - Improve Universal Access
 - Enhance Park Visibility
 - Improve Park Access
 - Improve Neighborhood Connectivity/Programming
 - Design Flexible, Multi-functional park spaces
 - Site Drainage
 - Fountain Operation
 - Conservation of Historic Features

Site Analysis

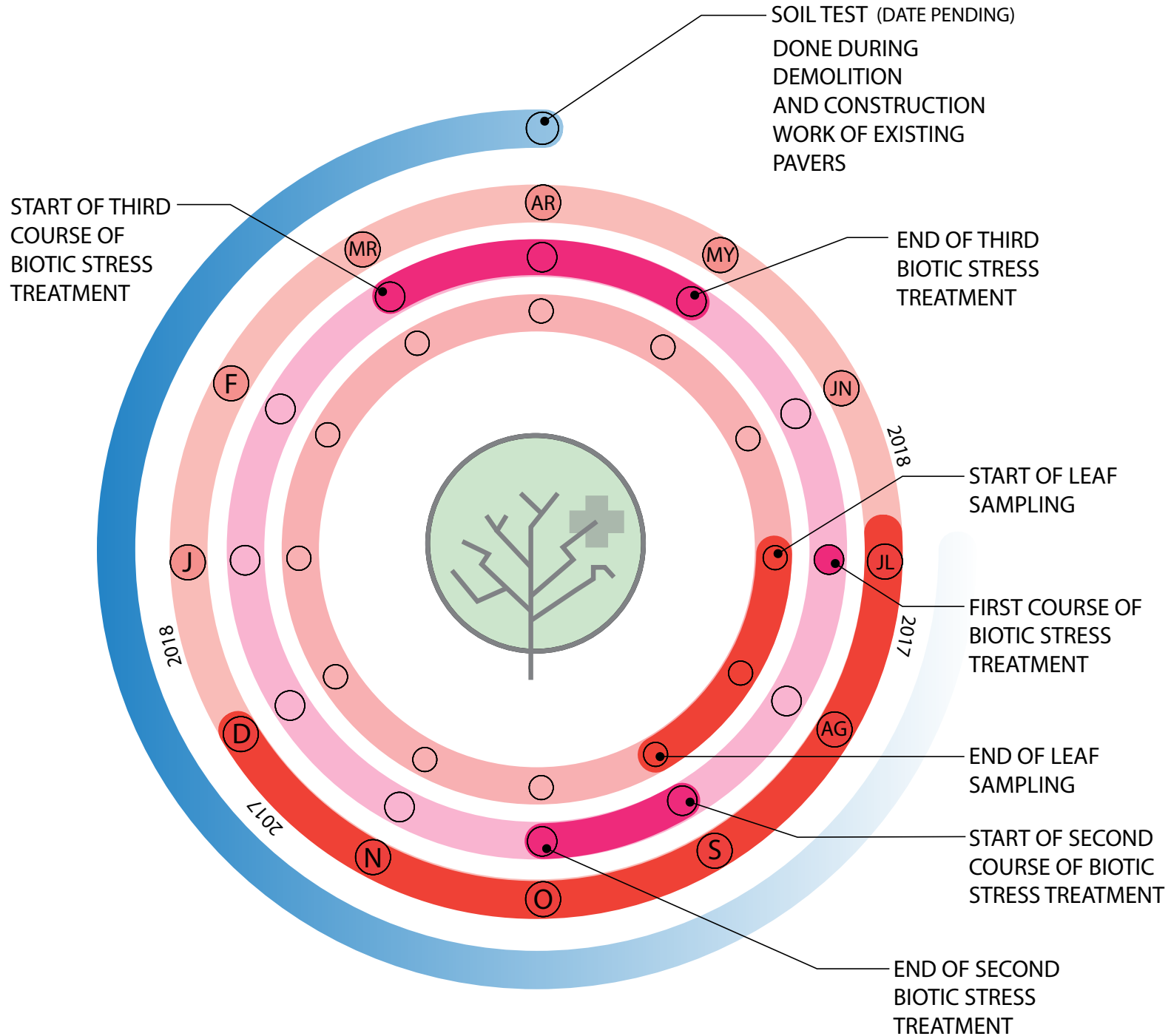
Tree Analysis



Legend

- Existing tree with salt stress  (9)
- Existing tree to pruned  (44)
- Existing tree to remove and replace  (1)
- New 5" caliper linden  (2)

Site Analysis Tree Analysis



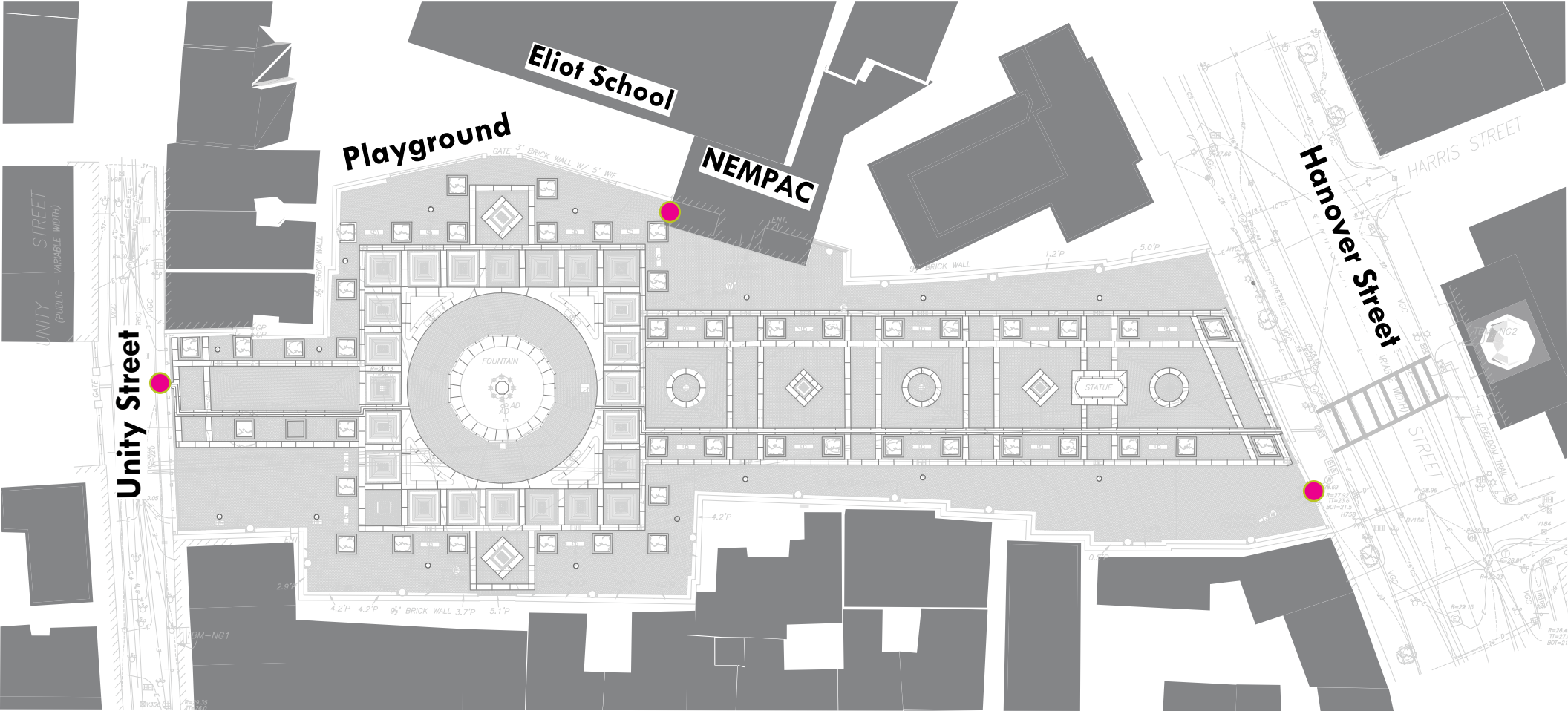
- Project Overview

Improve Park Access

- Expand Usable Park Area
- Preserve and Protect/Existing Trees
- Enhance Park Visibility
- Improve Neighborhood Connectivity/Programming
- Design Flexible, Multi-functional park spaces
- Site Drainage
- Fountain Operation
- Conservation of Historic Features

Site Analysis

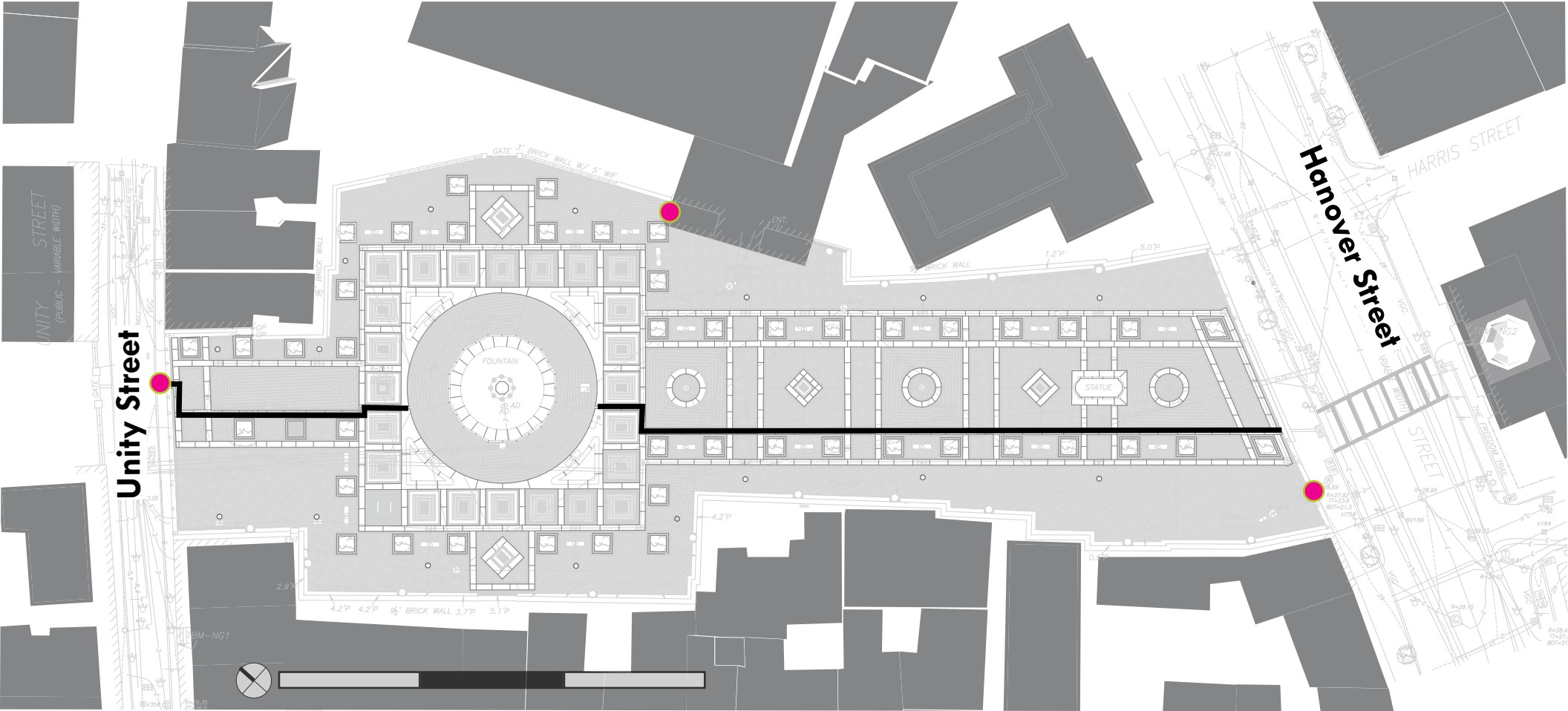
Universal Access



Universal Access 

Site Analysis

Existing Freedom Trail



Universal Access

Existing Freedom Trail Alignment

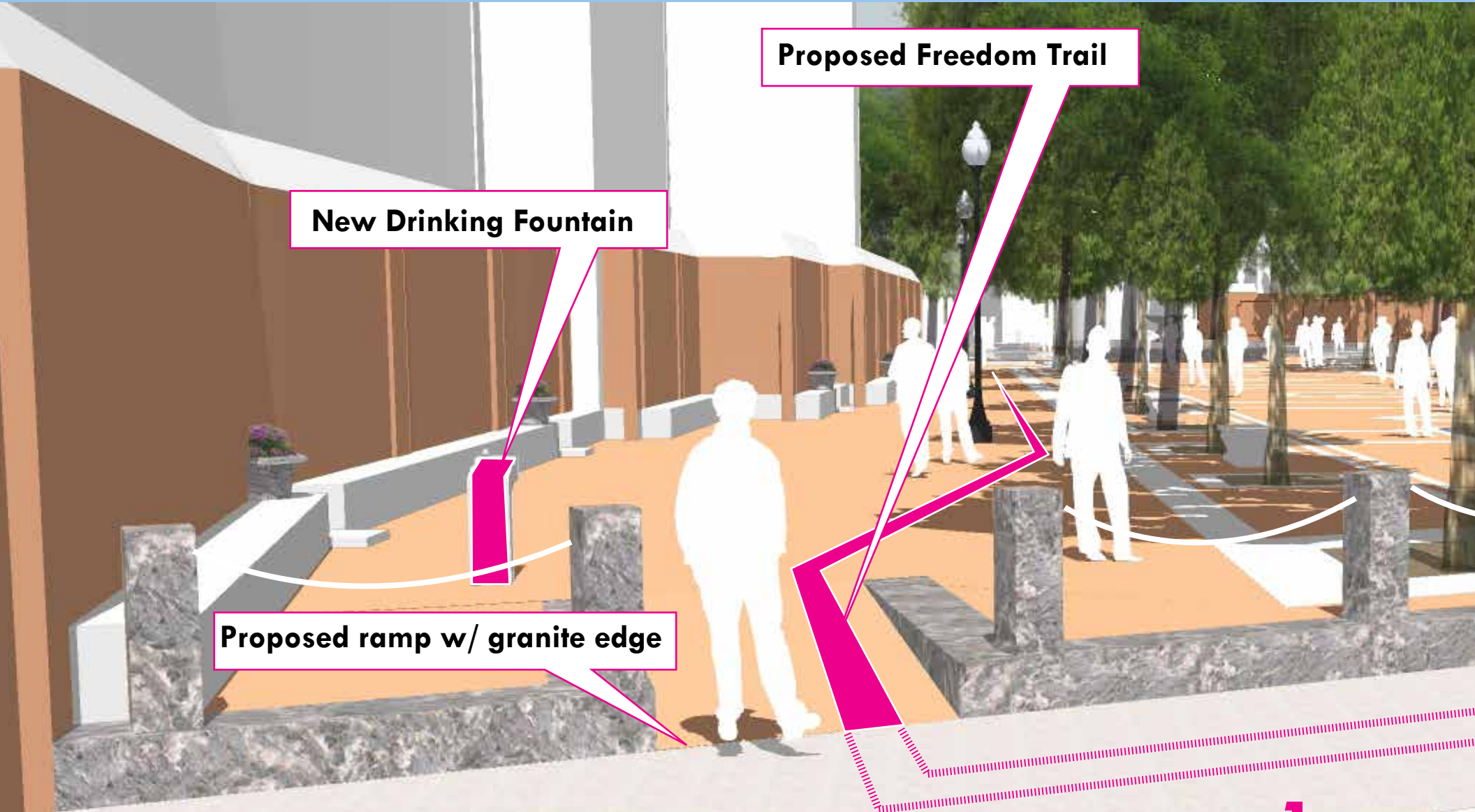


Site Analysis
Universal Access



Hanover Street

Universal Access



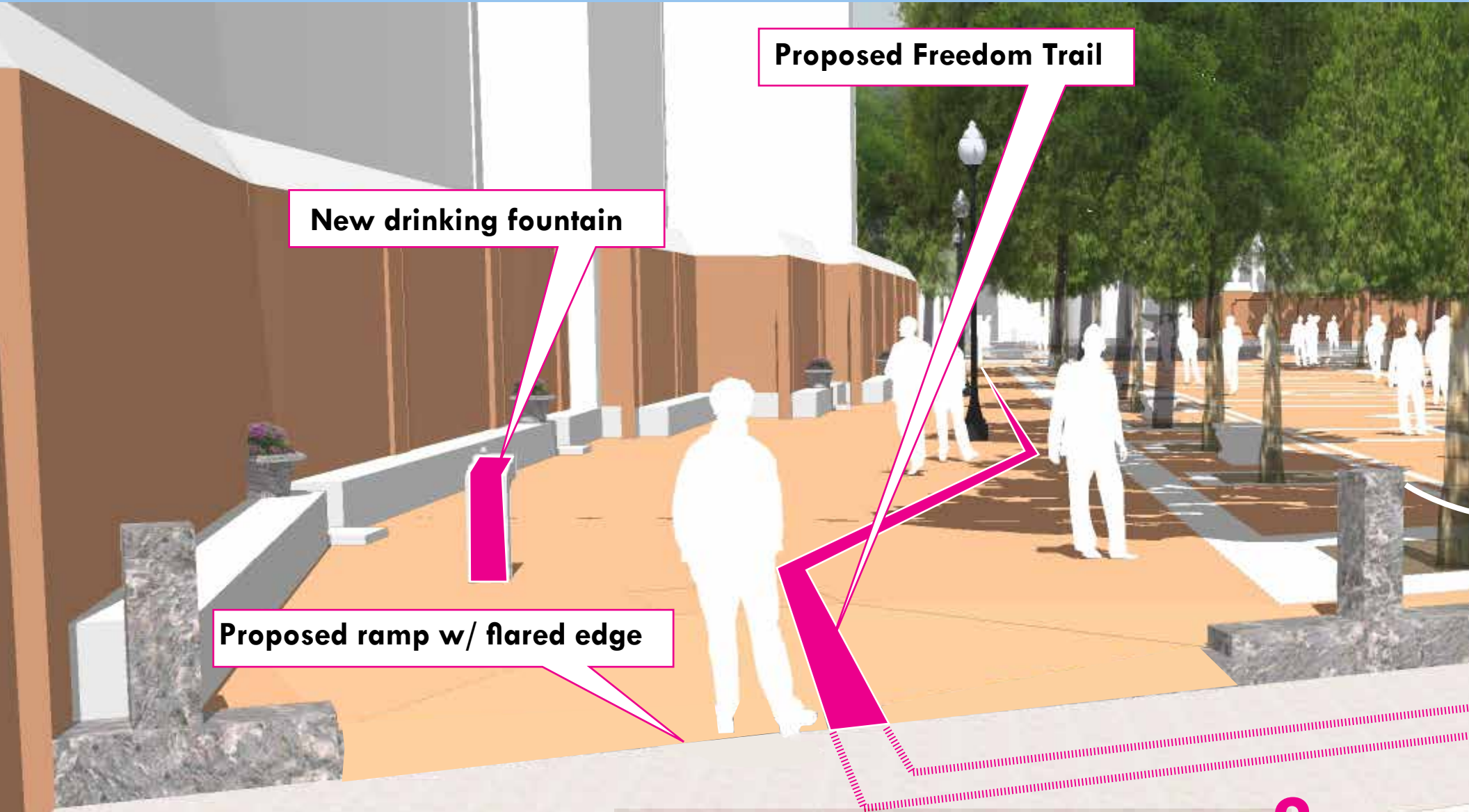
New Drinking Fountain

Proposed Freedom Trail

Proposed ramp w/ granite edge



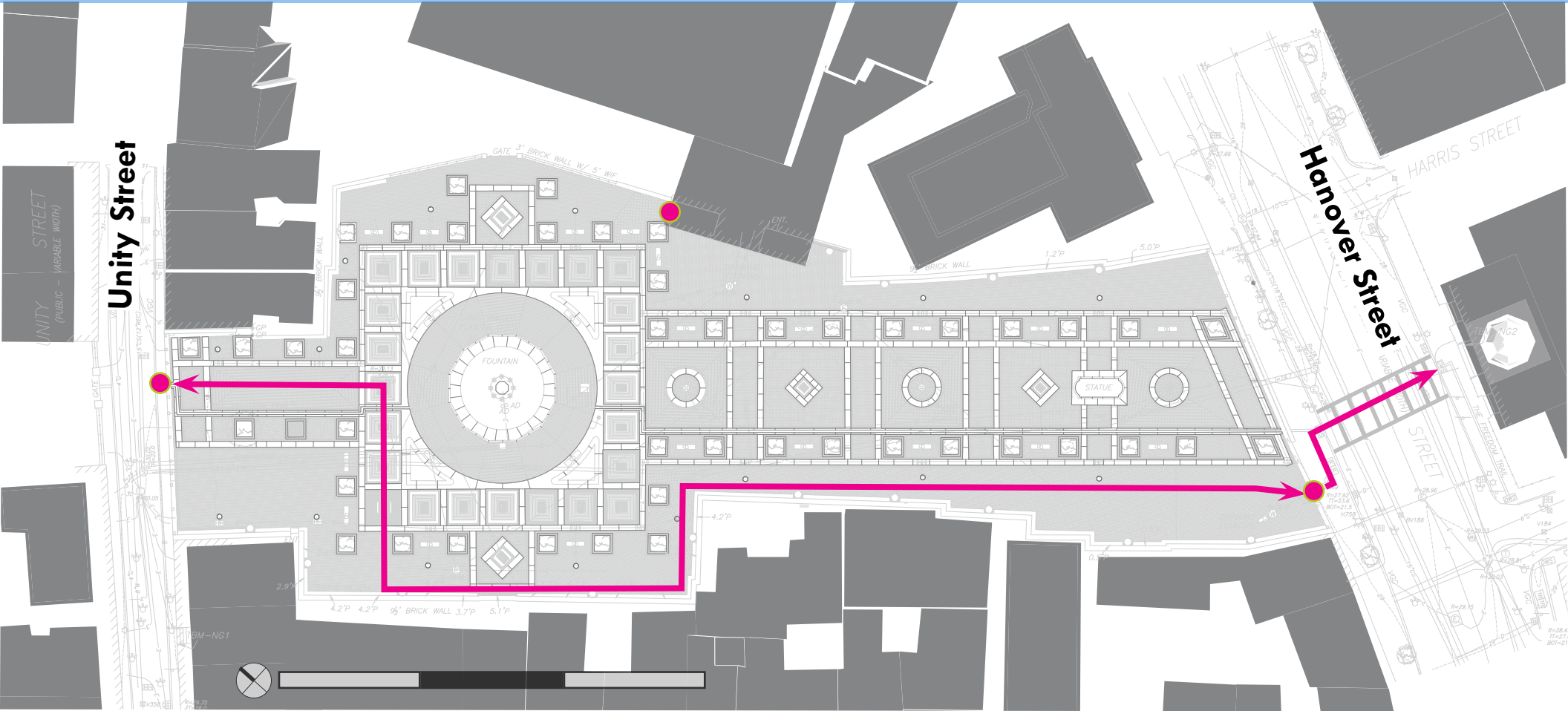
Universal Access



north ⊖

Design Development: Hanover Street **2**
Improvements to Paul Revere Mall

Proposed Freedom Trail



Legend

Potential Freedom Trail Alignment 

Universal Access 

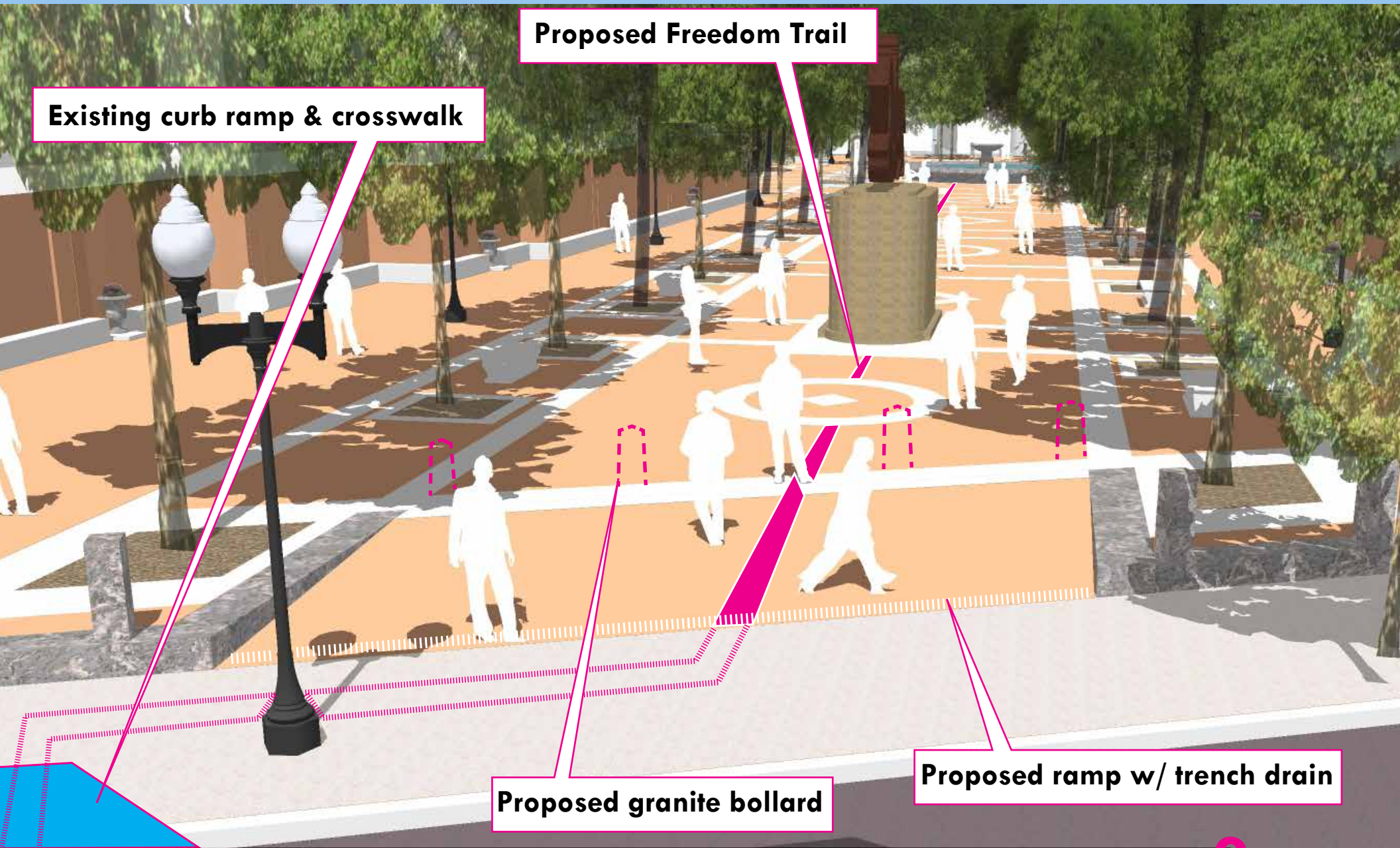
north 

Design Development: Hanover Street **1 & 2**
Improvements to Paul Revere Mall

Site Analysis
Universal Access



Hanover Street



Existing curb ramp & crosswalk

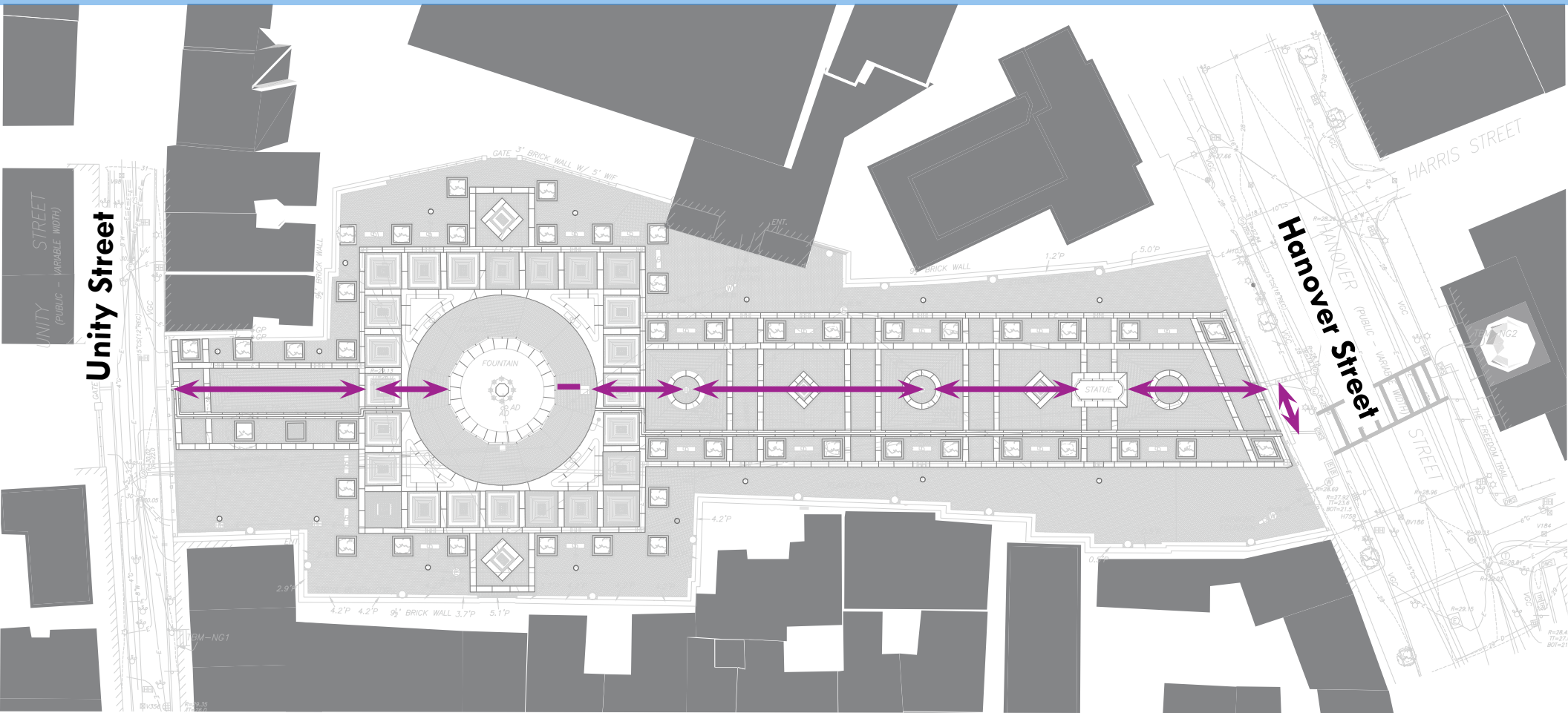
Proposed Freedom Trail

Proposed granite bollard

Proposed ramp w/ trench drain

Site Analysis

Proposed Freedom Trail



Site Analysis

Universal Access

Existing Freedom Trail

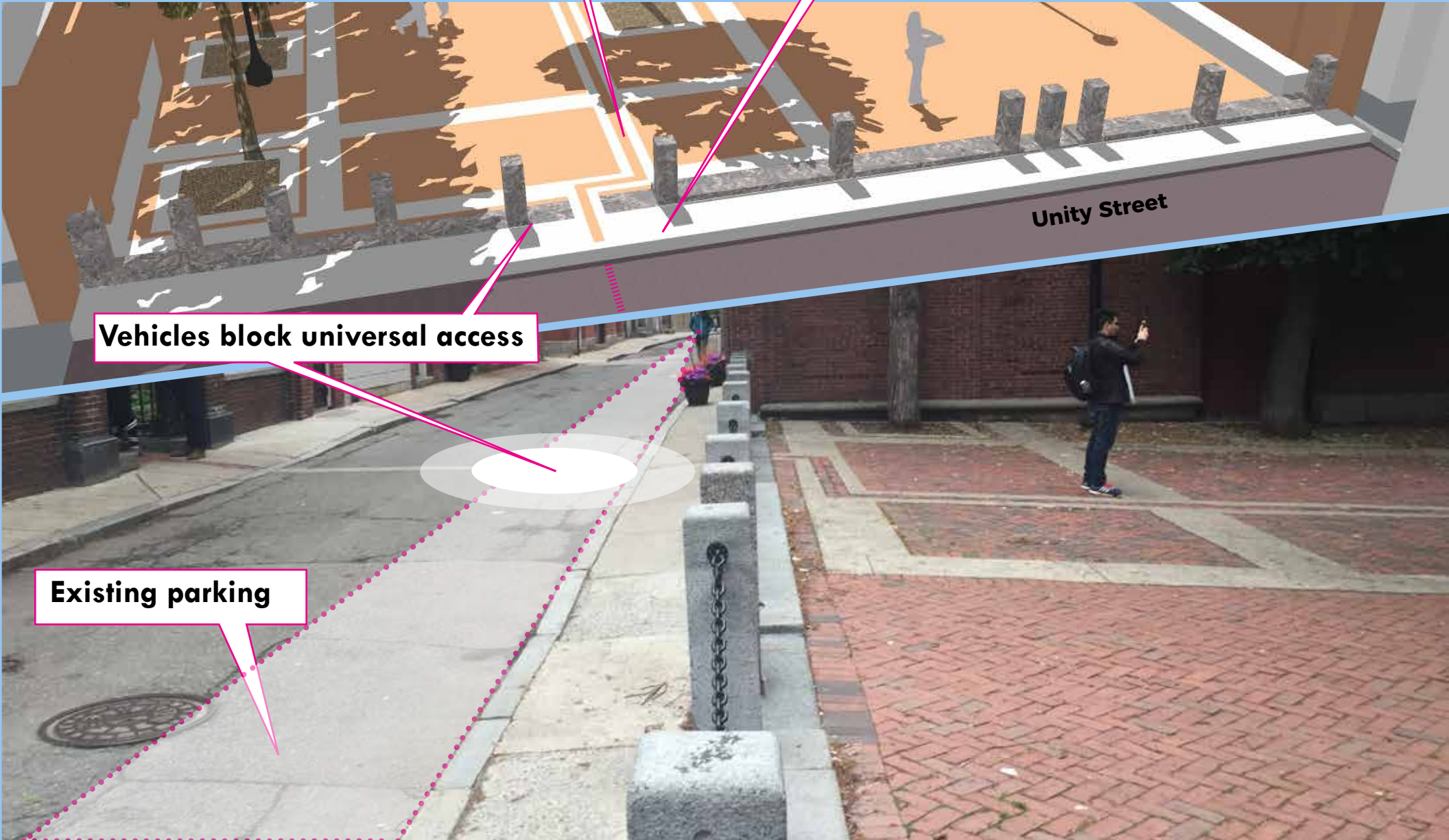
Existing curb ramp w/ no crosswalk

Unity Street

Vehicles block universal access

Existing parking

Unity Street



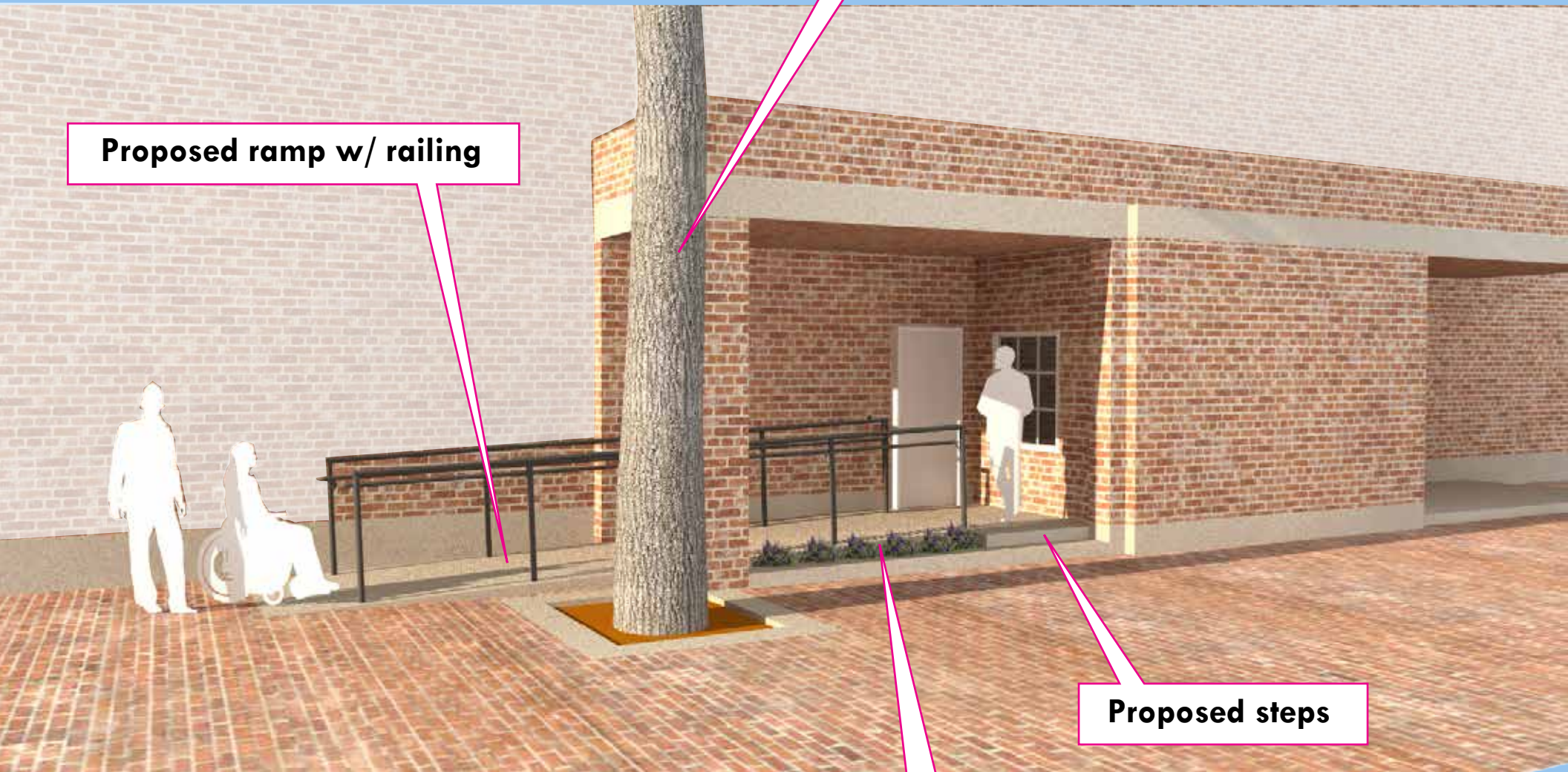
Site Analysis

Universal Access



Unity Street

Site Analysis Universal Access



Existing tree

Proposed ramp w/ railing

Proposed steps

Proposed planting

NEMPAC Access

The background of the slide is a photograph of a park area. In the center, there is a tall, white, multi-tiered steeple of a church, likely the Old North Church in Boston. The steeple is set against a clear blue sky. The foreground and middle ground are filled with bare, leafless trees, suggesting a winter or late autumn setting. The ground is covered with patches of snow. In the background, there are several multi-story brick buildings with many windows. A few people can be seen walking in the distance. The overall scene is a mix of urban architecture and natural elements.

•Project Overview

Enhance Park Visibility

- Expand Usable Park Area
- Preserve and Protect/Existing Trees
- Enhance Park Visibility
- Improve Park Access
- Improve Neighborhood Connectivity/Programming
- Design Flexible, Multi-functional park spaces
- Site Drainage
- Fountain Operation
- Conservation of Historic Features

Site Analysis Site Lighting

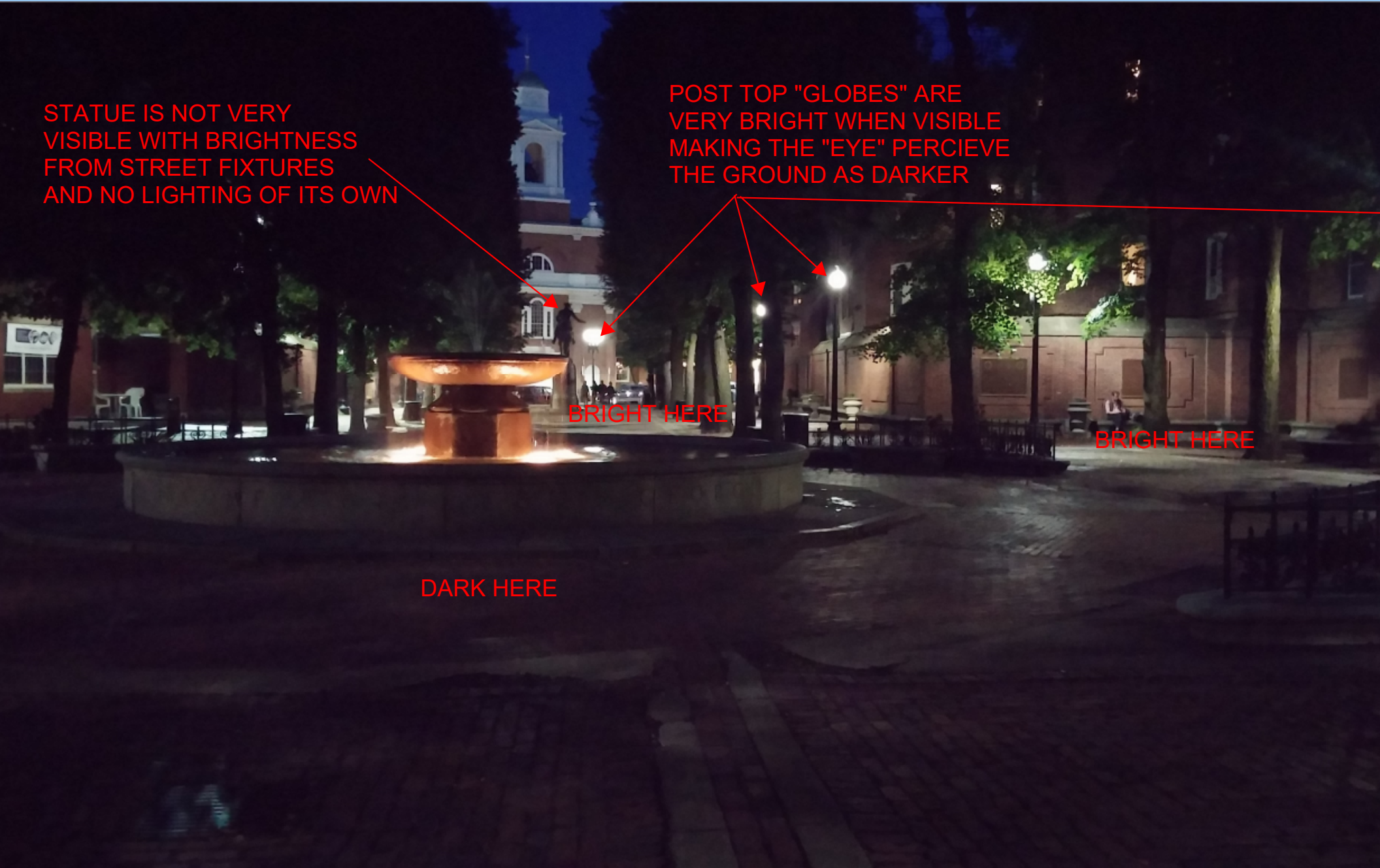
STATUE IS NOT VERY
VISIBLE WITH BRIGHTNESS
FROM STREET FIXTURES
AND NO LIGHTING OF ITS OWN

POST TOP "GLOBES"
ARE VERY BRIGHT WHEN
VISIBLE MAKING THE
"EYE" PERCEIVE
THE GROUND AS DARKER

BRIGHT HERE

BRIGHT HERE

DARK HERE



Site Analysis
Site Lighting



BRIGHT HERE

DARK HERE

Site Analysis
Site Lighting




Site Analysis
Site Lighting





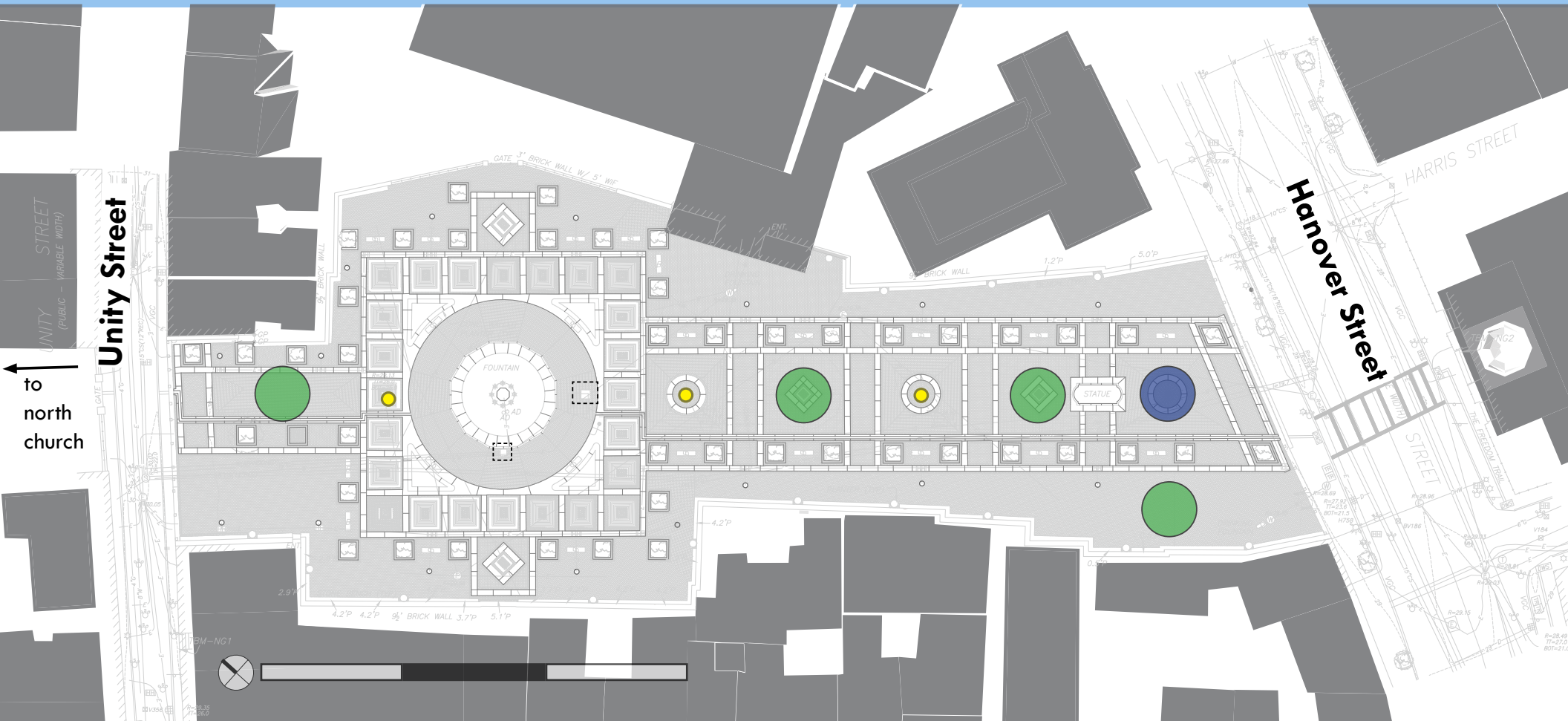
•Project Overview

Design Flexible, Multi-functional Park Spaces

- 
- 
- Expand Usable Park Area
 - Improve Universal Access
 - Preserve and Protect/Existing Trees
 - Enhance Park Visibility
 - Improve Park Access
 - Improve Neighborhood Connectivity/Programming
 - Site Drainage
 - Fountain Operation
 - Conservation of Historic Features

Site Analysis

Holiday Tree Location

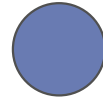


Legend

Potential Seasonal Tree Location



Existing Seasonal Tree Location

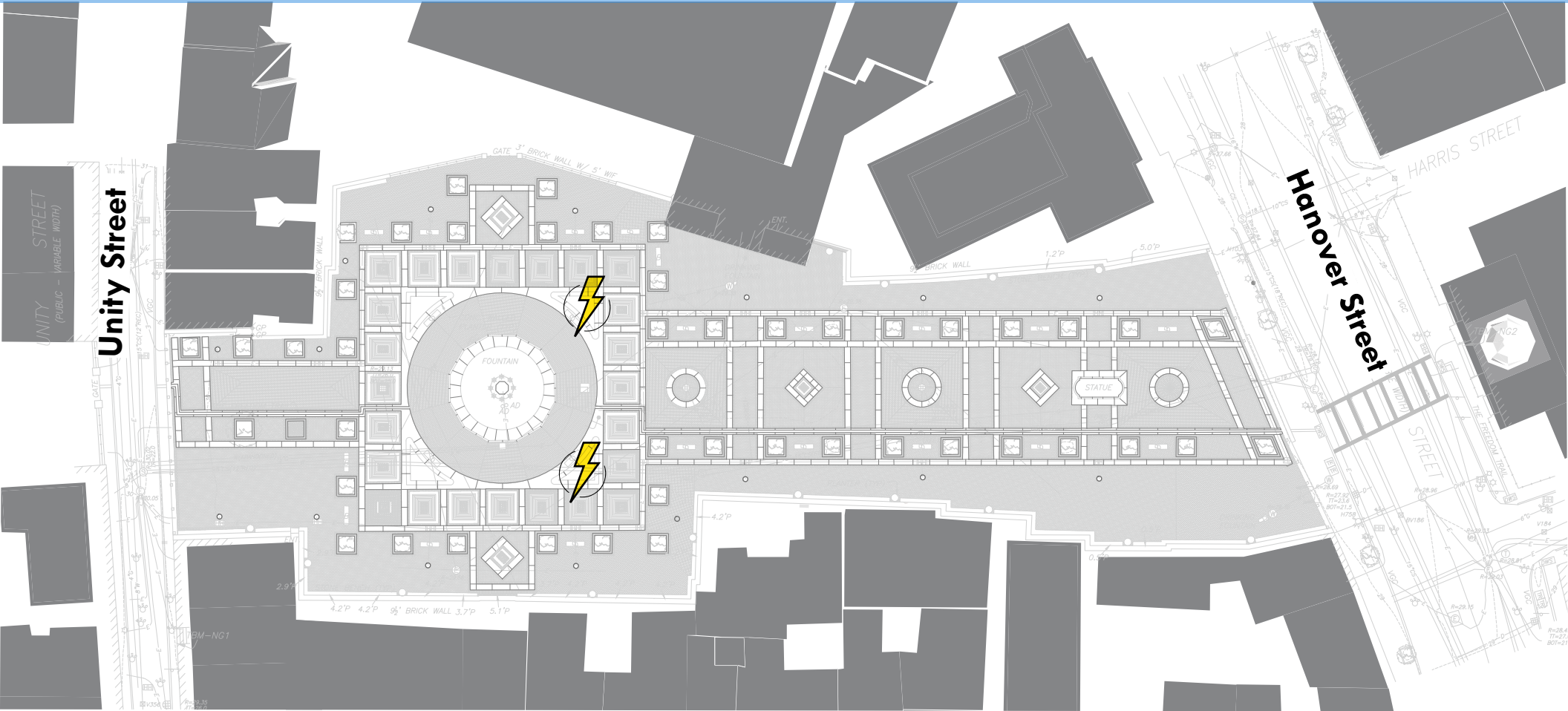


Existing Catch Basin




Site Analysis

Electrical Outlets

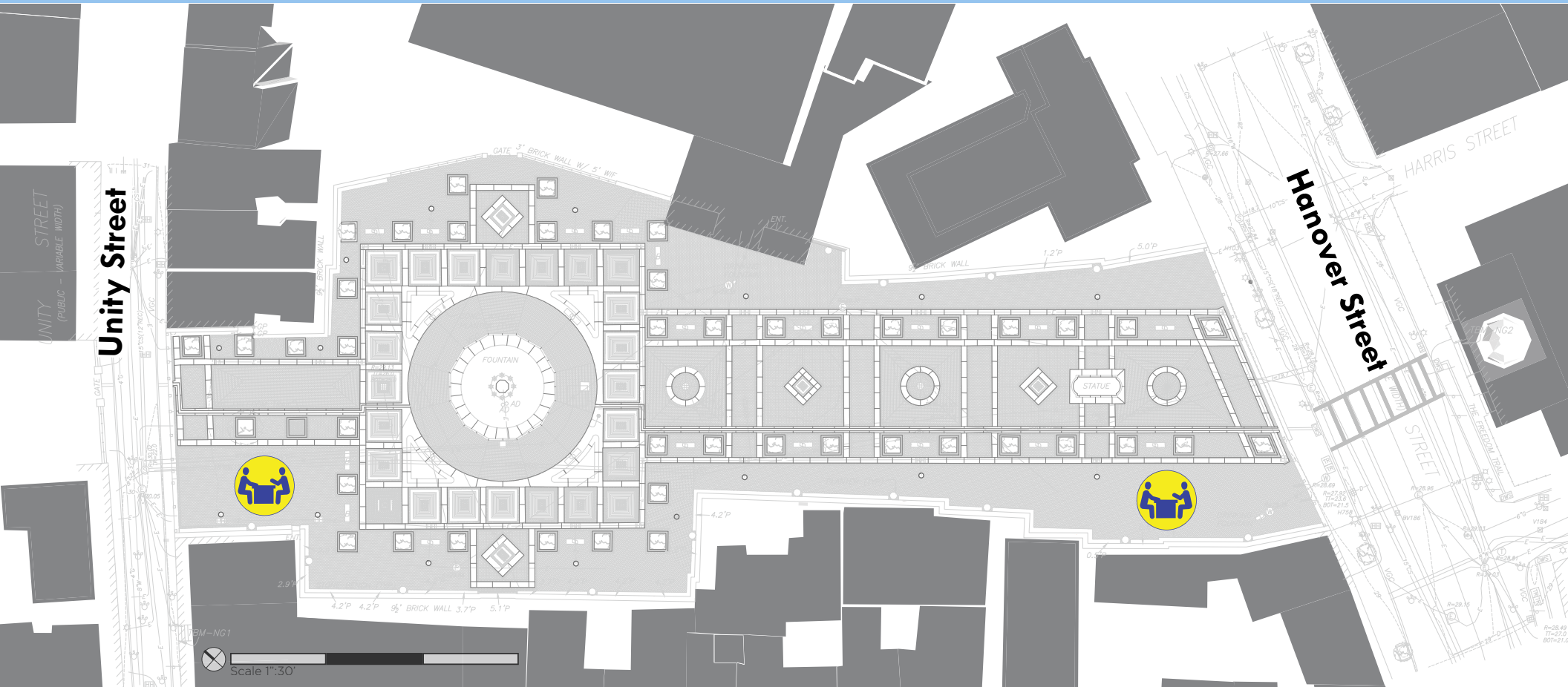


Legend

Potential electrical outlet location 

Site Analysis

Potential Seating Location



Legend

 Potential group seating location

Site Analysis Seating

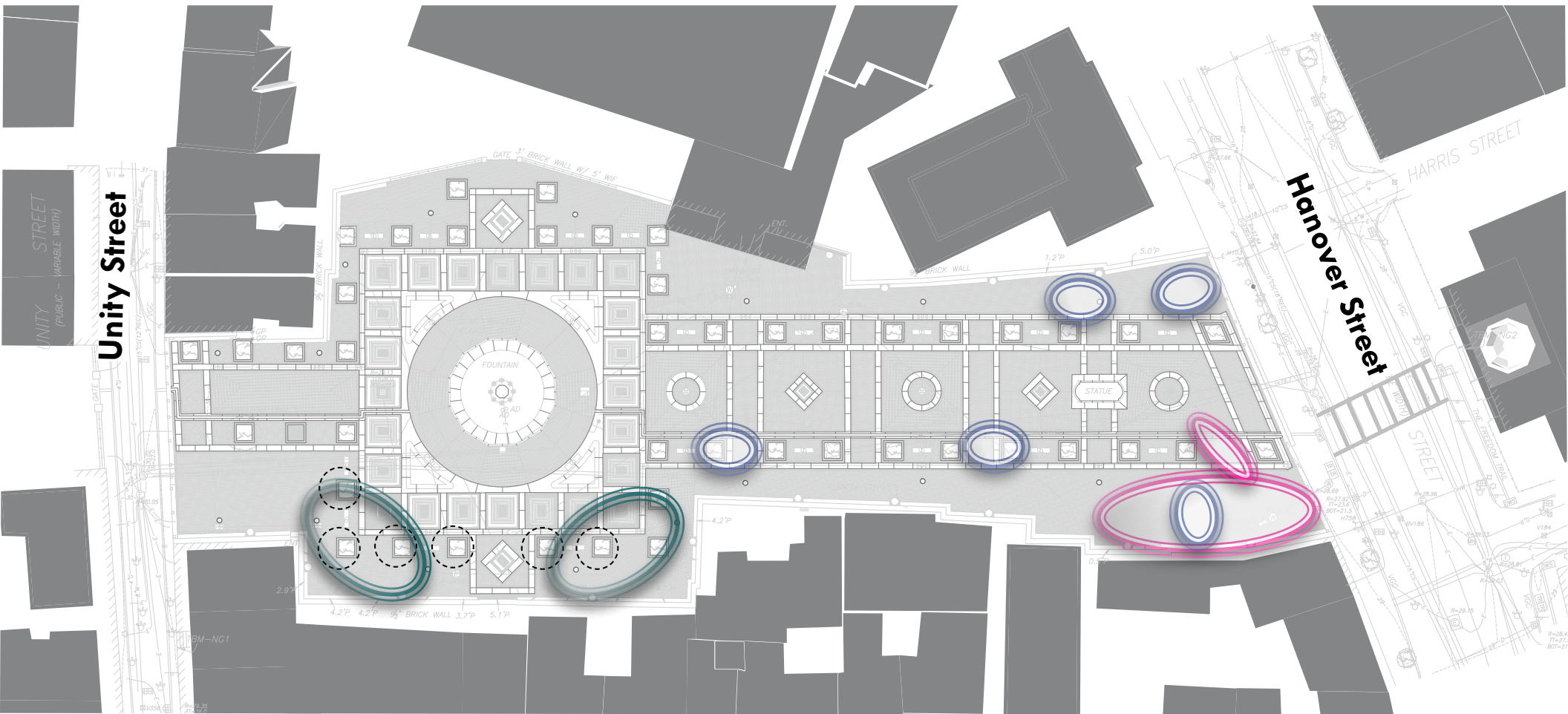


Site Analysis
Potential Seating



Site Analysis

Potential Vendor Location



Legend

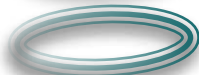
Existing Busker locations



Existing Vendor locations

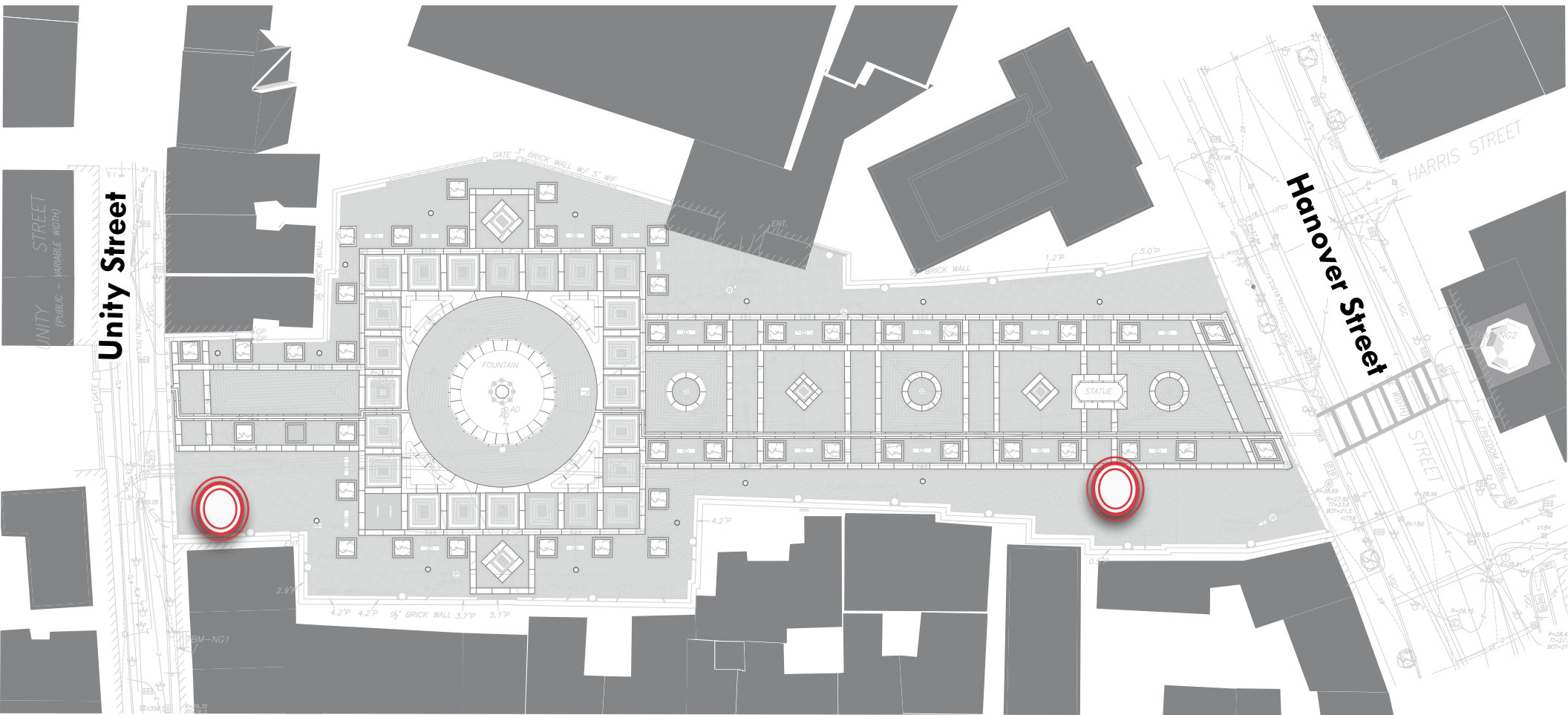


Potential Vendor locations



Site Analysis

Dog Waste Bag Locations



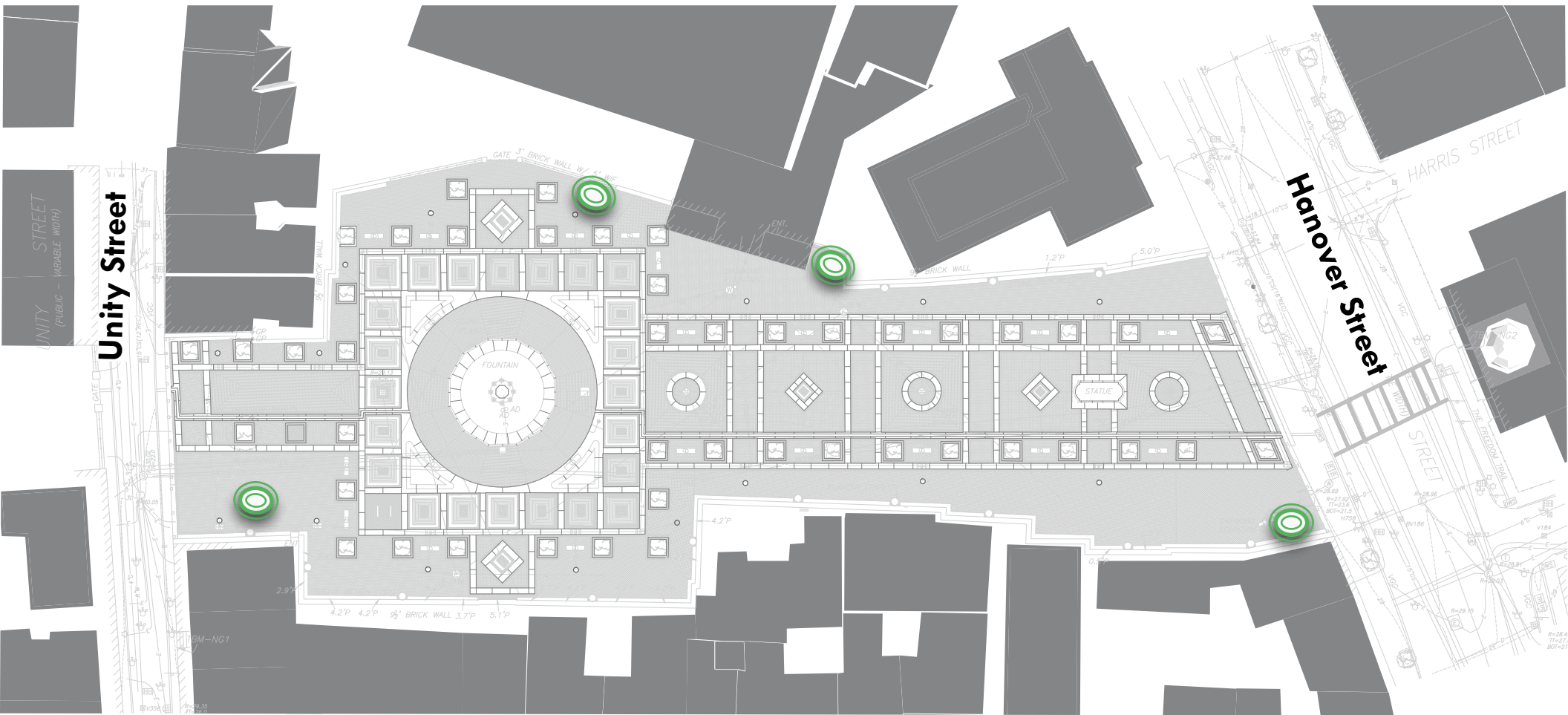
Legend

Potential Dog Waste Bag Location



Site Analysis

Bike Rack Locations



Legend

Potential Bike Rack Location 



•Project Overview

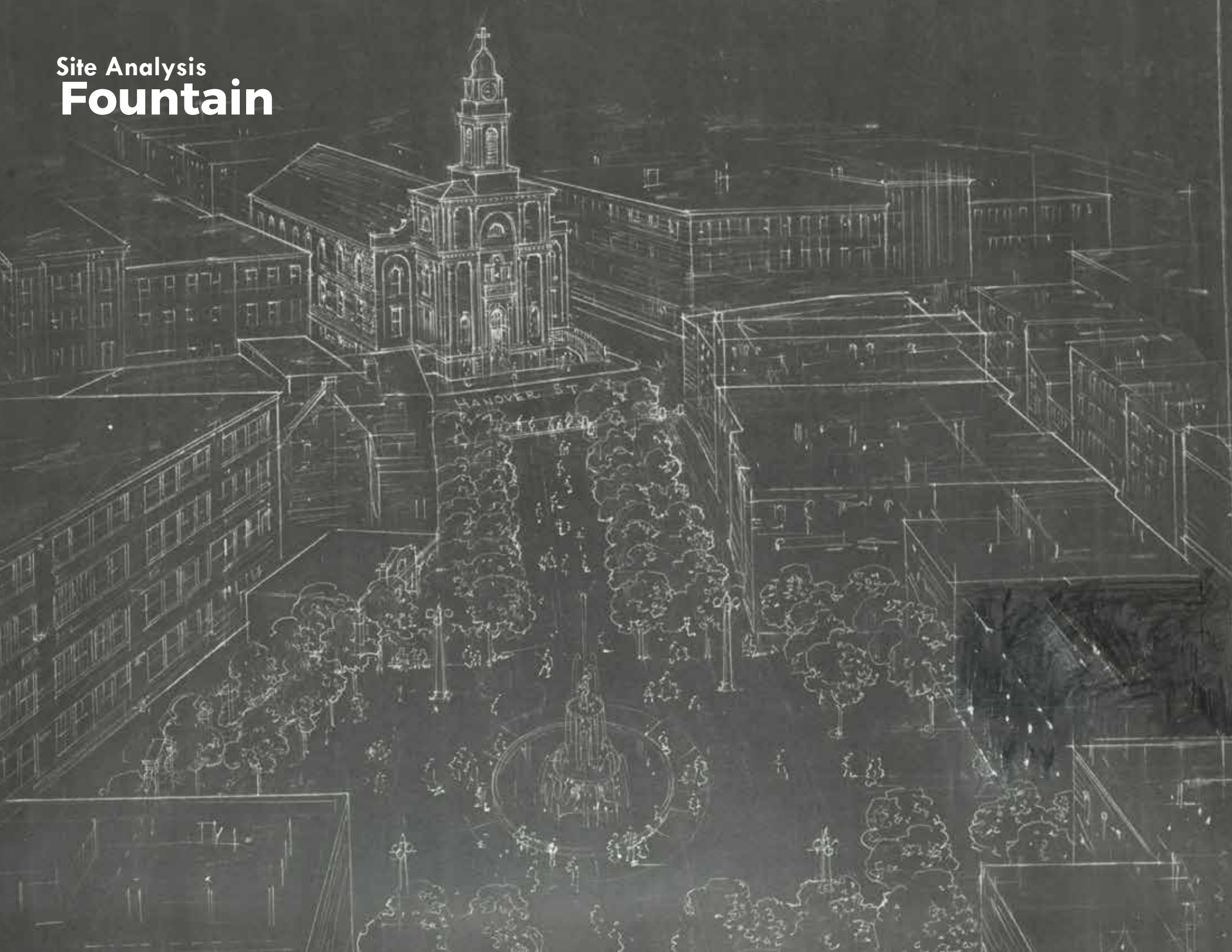
Fountain Operation

- 
- 
- Expand Usable Park Area
 - Improve Universal Access
 - Preserve and Protect/Existing Trees
 - Enhance Park Visibility
 - Improve Park Access
 - Improve Neighborhood Connectivity/Programming
 - Site Drainage
 - Design Flexible, Multi-functional park spaces
 - Conservation of Historic Features

Site Analysis
Fountain



Site Analysis
Fountain



Site Analysis
Fountain





•Project Overview

Site Drainage

- Expand Usable Park Area
- Improve Universal Access
- Preserve and Protect/Existing Trees
- Enhance Park Visibility
- Improve Park Access
- Improve Neighborhood Connectivity/Programming
- Fountain Operation
- Design Flexible, Multi-functional park spaces
- Conservation of Historic Features

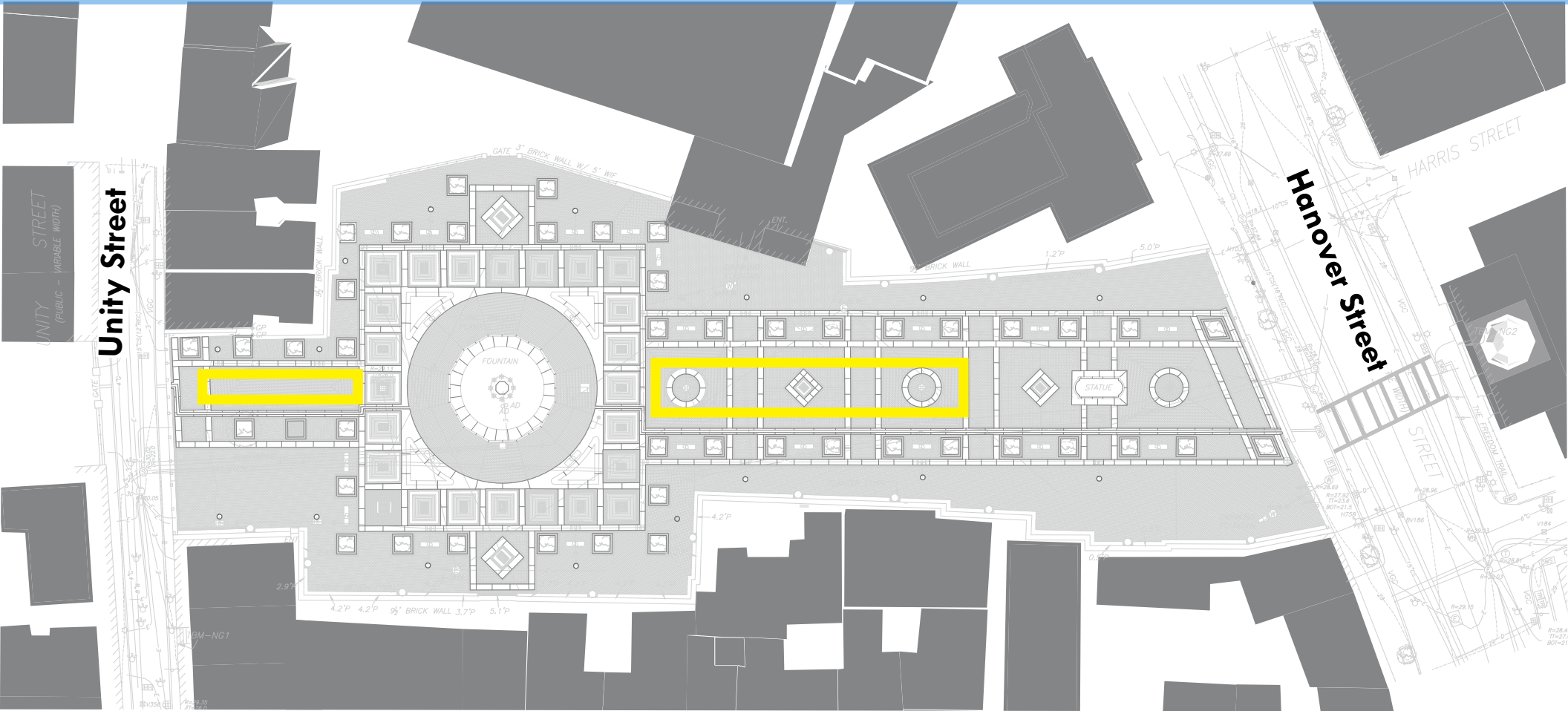


Site Analysis
Site Drainage



Site Analysis

Site Drainage



Legend

Potential Infiltration Areas



Site Analysis

Site Drainage



Cultec Stormwater System



•Project Overview

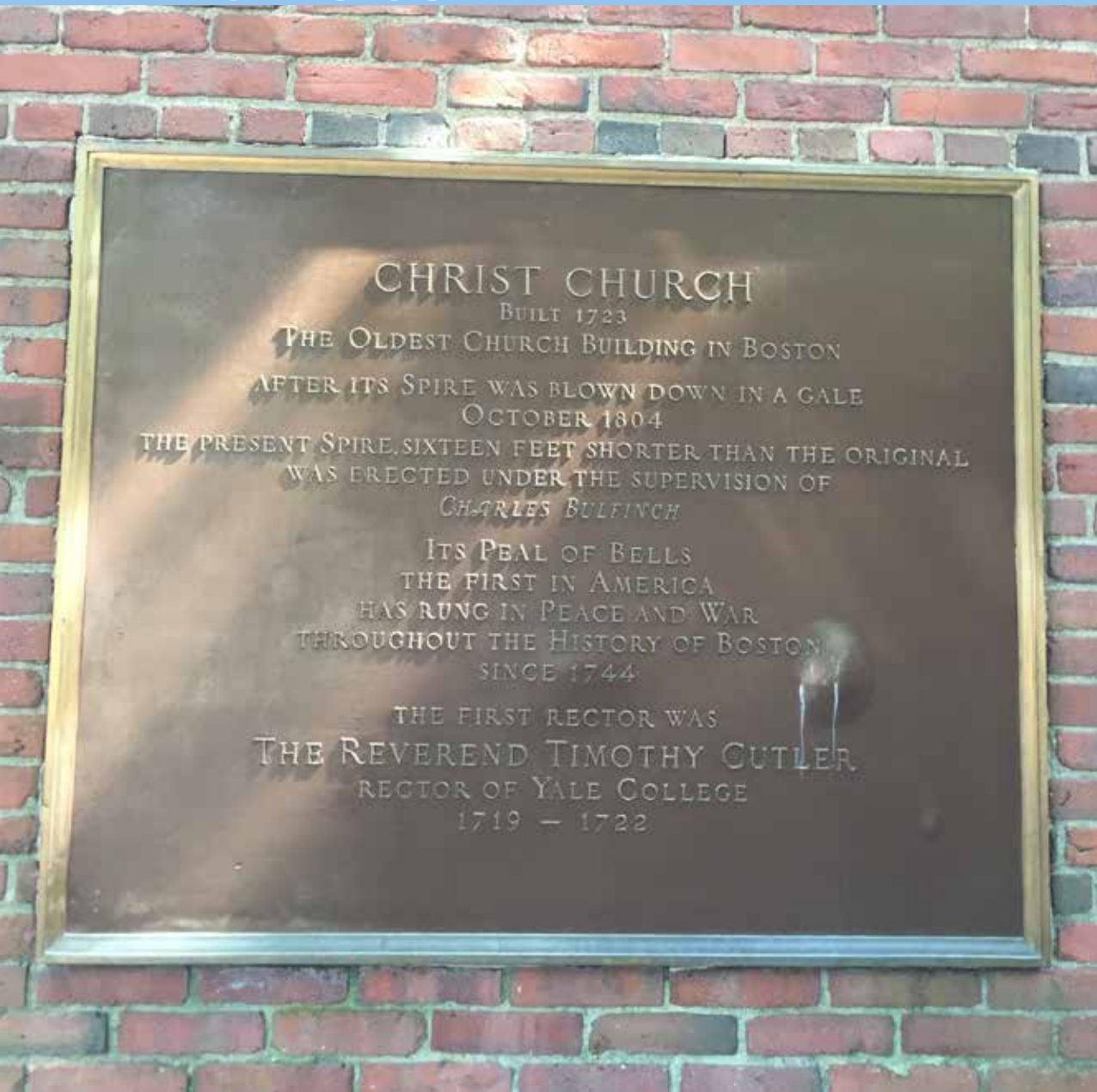
Conservation of Historic Features

- 
- 
- Expand Usable Park Area
 - Improve Universal Access
 - Enhance Park Visibility
 - Improve Park Access
 - Improve Neighborhood Connectivity/Programming
 - Fountain Operation
 - Site Drainage
 - Design Flexible, Multi-functional park spaces
 - Conservation of Historic Features

Site Analysis
Amenities



Site Analysis
Amenities





A large group of people is seated in a room, facing a presentation screen. The room appears to be a community meeting or a public discussion. The people are dressed in casual to business-casual attire. The room has a modern, open-plan feel with large windows and a high ceiling. The overall atmosphere is one of active participation and listening.

LISTENING & DISCUSSION

Help us build great parks by providing input on what matters to you.



Allison Perlman, Project Manager
Allison.Pperlman@boston.gov or 617-961-3035

Marchelle Jacques-Yarde, Outreach Coordinator, External Affairs
marchelle.jacques-yarde@boston.gov or 617-961-3006

ONS representative, Office of Neighborhood Services
Maria.Lanza@boston.gov or 617-635-4987

For questions, maintenance requests or concerns regarding any of our parks
contact 311

