

Improvements to Garvey Playground, Community Meeting 02, Minutes

Date & Time: June 14, 2017 at 6:30pm
Location: Leahy Holloran Community Center, 1st floor.
1 Worrell St, Dorchester, MA 02122
Prepared by: Eden Dutcher, GroundView

<u>Attendee</u>	<u>Affiliation</u>
Lauren Bryant	Boston Parks and Recreation Department (BPRD)
David Cotter	Boston Neighborhood Services (BNS)
Eden Dutcher	GroundView (GV)
Wilson Martin	GroundView (GV)
Mia H Feng	GroundView (GV)
Cyrus Feng	GroundView (GV)
Michelle Kayserman	Samiotas, Inc (SI)
Approximately 20 Community Members	

Lauren Bryant began the community meeting by giving a project overview and introducing the project team.

Project Schedule

- Community Meeting 01 – May 3, 2017
 - Listening & Sharing Ideas for Improvement
- Community Meeting 02 – June 14, 2017
 - Presentation of Design Alternatives
- Community Meeting 03 – August/September 2017
 - Presentation of Preferred Design
- Construction Documentation – October 2017
- Park Construction to begin – Fall/Winter 2017
- Anticipated Park Opening – Fall 2018

Estimated Construction Budget

- \$4,150,000

Project Team

- Boston Parks & Recreation Department
 - Lauren Bryant, Project Manager
 - Marchelle Jacques-Yarde, Outreach Coordinator, External Affairs
- Landscape Architect: GroundView
 - Eden Dutcher, Project Manager
 - Wilson Martin, Design Principal
 - Mia Feng, Project Designer
- Mayor's Office
 - David Cotter, Office of Neighborhood Services

Eden Dutcher continued by presenting:

Design Team

- GroundView
 - Landscape Architecture
 - Two local parks by GroundView
 - Chuckie Harris Park, Somerville
 - Symphony Park, Somerville
- Samiotes, Inc
 - Civil Engineering
 - Stormwater Design

Recap of Community Meeting 01

- Context
 - Neighborhood
 - Landmarks
 - Pedestrian access
 - Open Space
 - Active Recreation Facilities
- Site Analysis
 - Incomplete Accessible Circulation
 - Flooding During and After Precipitation
 - Too Little Shade
 - Poor Sight Lines
 - Neglected Edges
 - High Demand on Facilities
 - Particulate & Noise Pollution from I-93
- Public Comment from
 - Survey and 5/3 Community Meeting

Lauren Bryant presented the City of Boston's priorities, goals for parks and recreation and program decisions made by the BPRD Commissioner.

City of Boston Priorities

- Expanding walkable access to parks
- Addressing equity
- Climate resilience
- Health
- Housing and community building

Park and Recreation Goals

- Preserve and Protect Existing Trees
- Expand Usable Park Area
- Improve Universal Access
- Enhance Park Visibility
- Improve Access to Parks
- Design Flexible, Multi-functional Park Spaces

BPRD Commissioner Decisions

- Multipurpose Athletic Field
 - will be made of synthetic turf and will be made of safe materials
 - will be continued to be permitted for baseball, flag football, lacrosse and soccer
 - will not be permitted for Pop Warner
- Athletic Field Lighting
 - The athletic field will have field light fixtures and will be turned-on for permitted events.
 - The light fixtures will be 'cut-off' fixtures and light field with little to no glare.
- Cooling Stations
 - The park will have a 'cooling station' that will include a small interactive water element. This will not be a large water splash pad like Pope John Paul II Park.

Eden Dutcher and Wilson Martin presented the following:

Project Goals

- Maintain Existing Programs
- Improve Facilities
- Explore Additional Components
- Create a Multifaceted Playground that Feels like one Park

Five Elements of Play

- Social
- Physical
- Sensory
- Cognitive
- Communication

Concept Plans Include

- Multipurpose Artificial Turf Field
 - Baseball Field, Flag Football Field (100 YD), Lacrosse, Soccer
 - Backstops, Player Seating, Spectator Seating
- Basketball Court
- Street Hockey Court
- Play Areas
 - 2-5yr , 5-12+yr
- Accessible Route
 - Entrances, Connecting Programs, Field House
- Cooling Station
- Trees
- Lighting
 - Field, Park, Courts?
- Site Furnishings
 - Seating, Bike Racks, Bottle Filling Station, Trash & Dog Waste Station

Concept #1: The Loop

- The Loop has a walking and jogging path that connects various recreation spaces around the park perimeter. The ball field shifts southeast slightly, allowing stepped seating to be rebuilt in a more accessible form with improved sight lines.

Concept #2: The Magnet

- The Magnet shifts everyday park activities closer to the neighborhood and sets play areas within an expanded tree canopy. The ball field flips orientation to include a pavilion for shading spectator seating.

Concept #3: The Expanse

- The Expanse takes advantage of the site's elevation change by integrating sports courts and play elements with topography. The ball field is flipped to the ideal solar orientation and stepped seating is rebuilt into the hill, maximizing space on the east side of the park.

Play Themes could include:

- Classic elements – climb, slide, spin, swing
- Organic elements – natural materials, free form
- Iconic elements – super-sized, unique

Cooling Stations could include:

- Mister
- Low spray or bubbler
- Hand pump & runnel

The larger group broke into small groups and gathered around plans comparing the three concepts. Participants discussed overall layouts and preferences for play elements.

General Questions/Comments throughout the meeting:

- Softball
 - There is a shortage of field space for softball. Can a softball field be incorporated into the design and permitted at Garvey?
 - A softball field with backstop will not fit without eliminating another program element.
 - Permitting for softball, without including a backstop, could be a possibility. There is also a potential conflict between softball infield and rectangular field. LB will discuss with permitting. GV will examine precedent for overlapping softball with rectangular fields and baseball.
- Sports Venues
 - Be sure to maintain memorial naming and signage for various venues – hockey, basketball, field.
 - Some participants favor a “Georgia Clay” infield for softball and baseball; others favor an artificial infield and only a pitcher’s mound in clay.
 - Suggest to visit additional ballfields for precedents: English High School, Dorchester High School. B.C. High
 - Some favor an outfield fence to limit long rolling balls and adding an element of legitimacy to the baseball experience with “warning track shots”; understand the idea of access to outfield as multipurpose lawn
- Dogs in Garvey
 - If the field is synthetic turf where are dogs allowed in Garvey? There is a large dog community. Can there be an off leash dog area on the DCR land?
 - There will be lawn areas in the new park design.

- Synthetic Turf Maintenance
 - What is the lifespan of synthetic turf and is BPRD capable of maintaining this kind of field?
 - Lifespan can be over 20yrs and BPRD has installed and is currently maintaining synthetic fields in the city.

- Department of Conservation Commission property
 - Was DCR invited to the meeting and what is the possibility of improving their adjacent property?
 - DCR was invited to the meeting. BPRD is currently discussing options with DCR on the potential of improving adjacent DCP property.

- Concept #1: The Loop
 - Like:
 - Loop
 - Track
 - Running/walking route is a plus
 - Don't Like:
 - Playground too close to Neponset Ave
 - Add:
 - Softball
 - Trash cans

- Concept #2: The Magnet
 - Like:
 - Shade Structure
 - Don't Like:
 - Not having loop/track
 - Trees that feel too dense
 - Switchback entrance from Neponset
 - Add:
 - Track

- Concept #3: The Expanse
 - Like:
 - Full pedestrian loop
 - Space between courts
 - Overall layout of program elements
 - Minimal activity along north side, adjacent to neighbors
 - Integrated stadium seating
 - Sloped entrance from southern Neponset entrance
 - Really like this one!
 - Don't Like:
 - Concern about swings in this area
 - Old steel bleachers
 - Add/change:
 - Track
 - Switch hockey & basketball
 - Dog park on southern DCR property
 - Clean-up northern DCR property
 - Shade Structure
 - Homerun fence for baseball field (3' or 4'?)

- Play Themes/Elements
 - Like:
 - Spinning dish & orb
 - Wide slide
 - Net climber incorporated with more features
 - Climbing hill
 - Climbing features
 - Don't Like:
 - Tall net climber - have in DOT park, not so well used

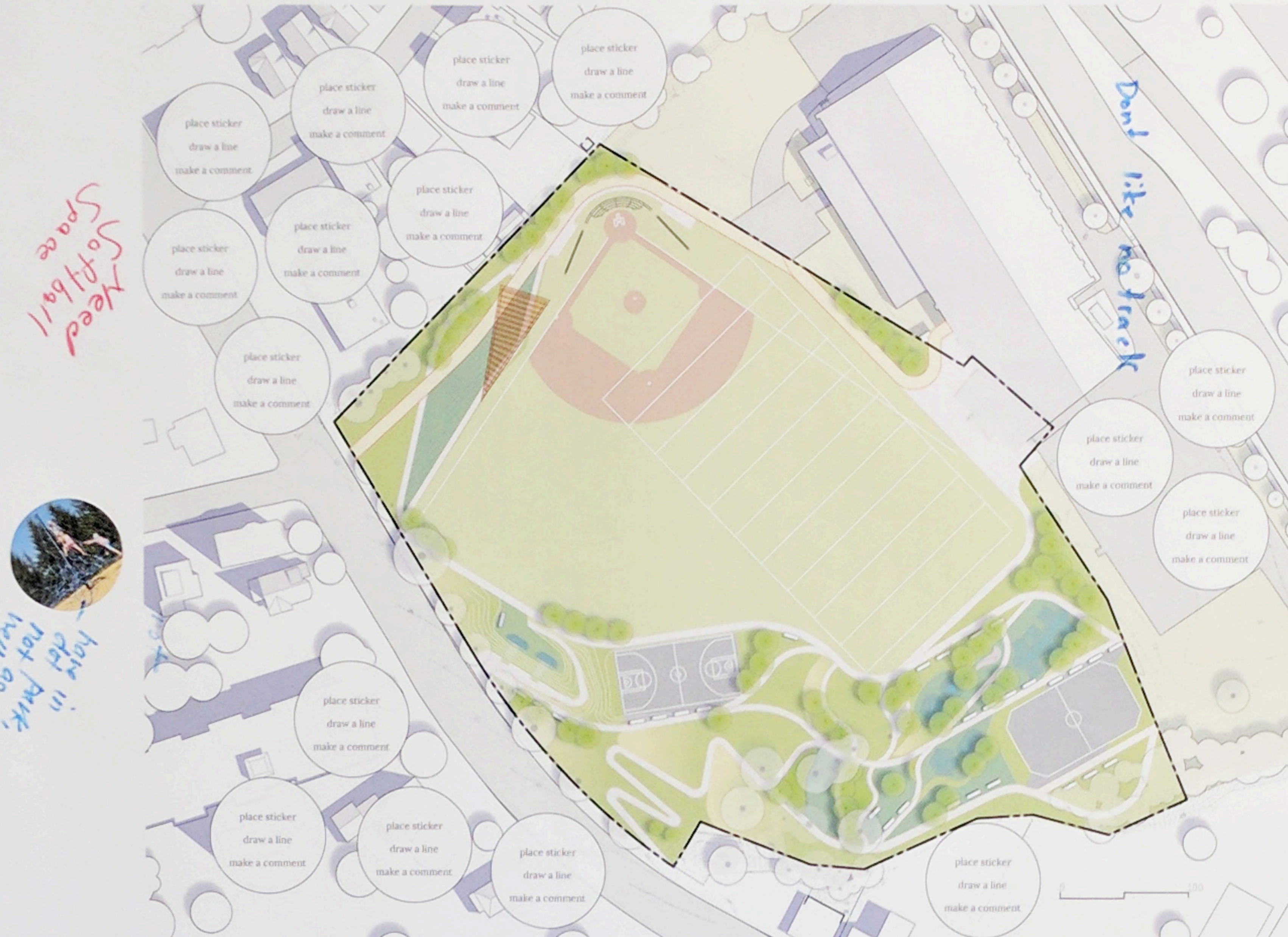
Design Concepts Survey; <http://sgiz.mobi/s3/8924a1775eec>

Project website for updates (including meeting minutes & presentations):
<https://www.boston.gov/departments/parks-and-recreation/improvements-garvey-playground>

**CONCEPT #1:
LOOP**



**CONCEPT #2:
MAGNET**



**CONCEPT #3:
EXPANSE**



Switch basketball + Hockey

Really like this one!

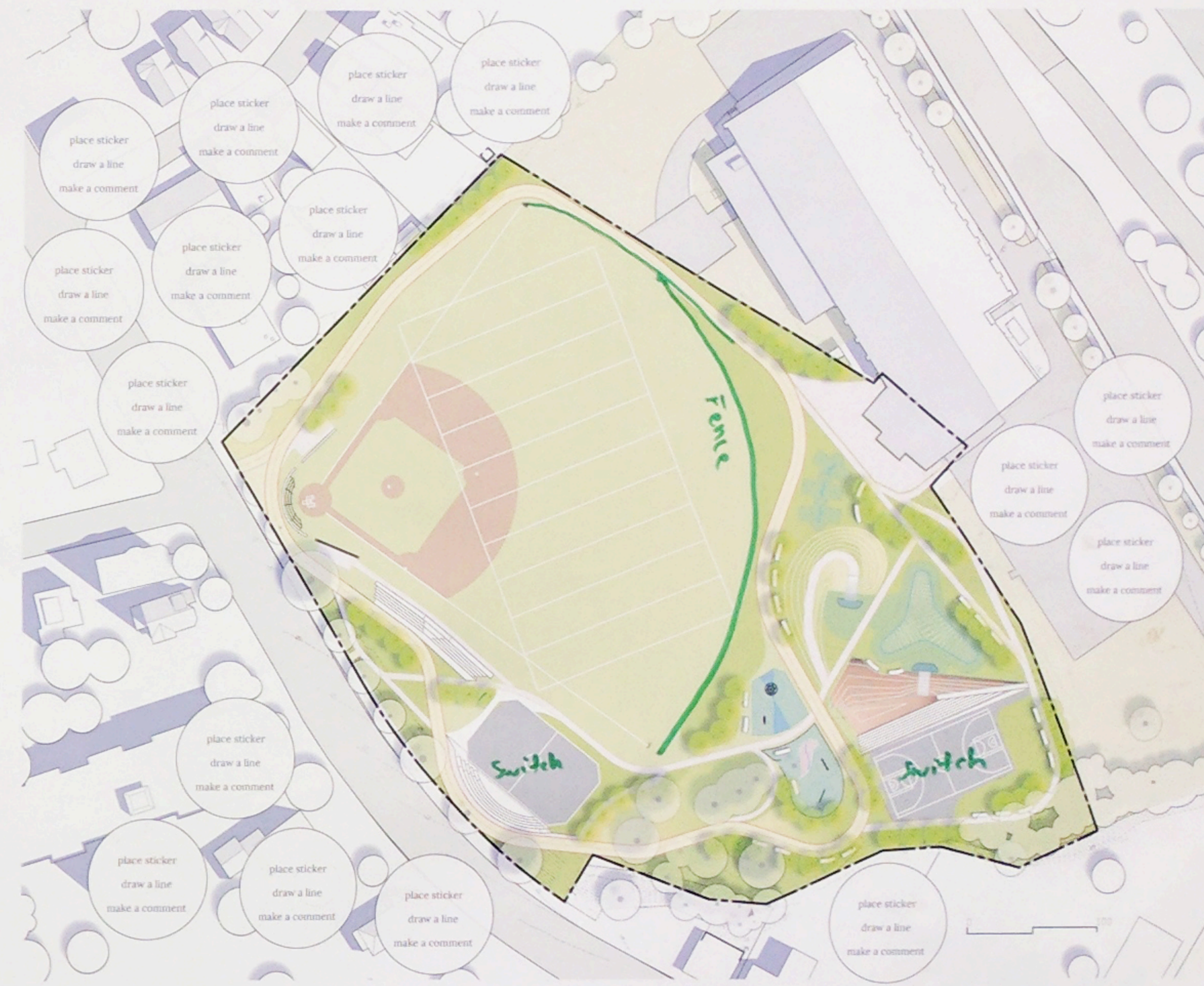
**CONCEPT #1:
LOOP**



**CONCEPT #2:
MAGNET**



**CONCEPT #3:
EXPANSE**



→ Girl's Softball infield 3 bases
 → Acknowledgments for (gender change) - (charleston high school)
 → King of the Mountain
 → Dora's High
 → BC High
 → Engle's High
 → Charleston High School



**CONCEPT #1:
LOOP**



**CONCEPT #2:
MAGNET**



**CONCEPT #3:
EXPANSE**

