

*Improvements to*  
**WESTLAND AVENUE**  
**GATEWAY**  
**BACK BAY FENS**



# AGENDA

---

1

**PROJECT TEAM & INTRODUCTION**

---

2

**PROJECT OVERVIEW**

---

3

**PRESENTATION**

---

4

**LISTENING & DISCUSSION**

---

5

**CLOSING REMARKS & NEXT STEPS**

---

# PROJECT TEAM

---

## **Cathy Baker- Eclipse**

Project Manager

[Cathy.Baker-Eclipse@boston.gov](mailto:Cathy.Baker-Eclipse@boston.gov) or 617-961-3058

## **Margaret Dyson**

Director of Historic Parks

[Margaret.Dyson@boston.gov](mailto:Margaret.Dyson@boston.gov) or 617-961-3028

## **Marchelle Jacques- Yarde**

Outreach Coordinator, External Affairs

[marchelle.jacques-yarde@boston.gov](mailto:marchelle.jacques-yarde@boston.gov) or 617-961-3006

## **Richard Burck Associates**

Landscape Architect

## **Building & Monument Conservation**

Stone Conservator



# DESIGN TEAM

---

## **Project Lead / Landscape Architect**

Richard Burck Associates, Somerville, MA

Richard “Skip” Burck, RLA, FASLA, FAAR  
Principal



Sam Valentine, RLA, LEED AP  
Project Manager

## **Stone Conservator**

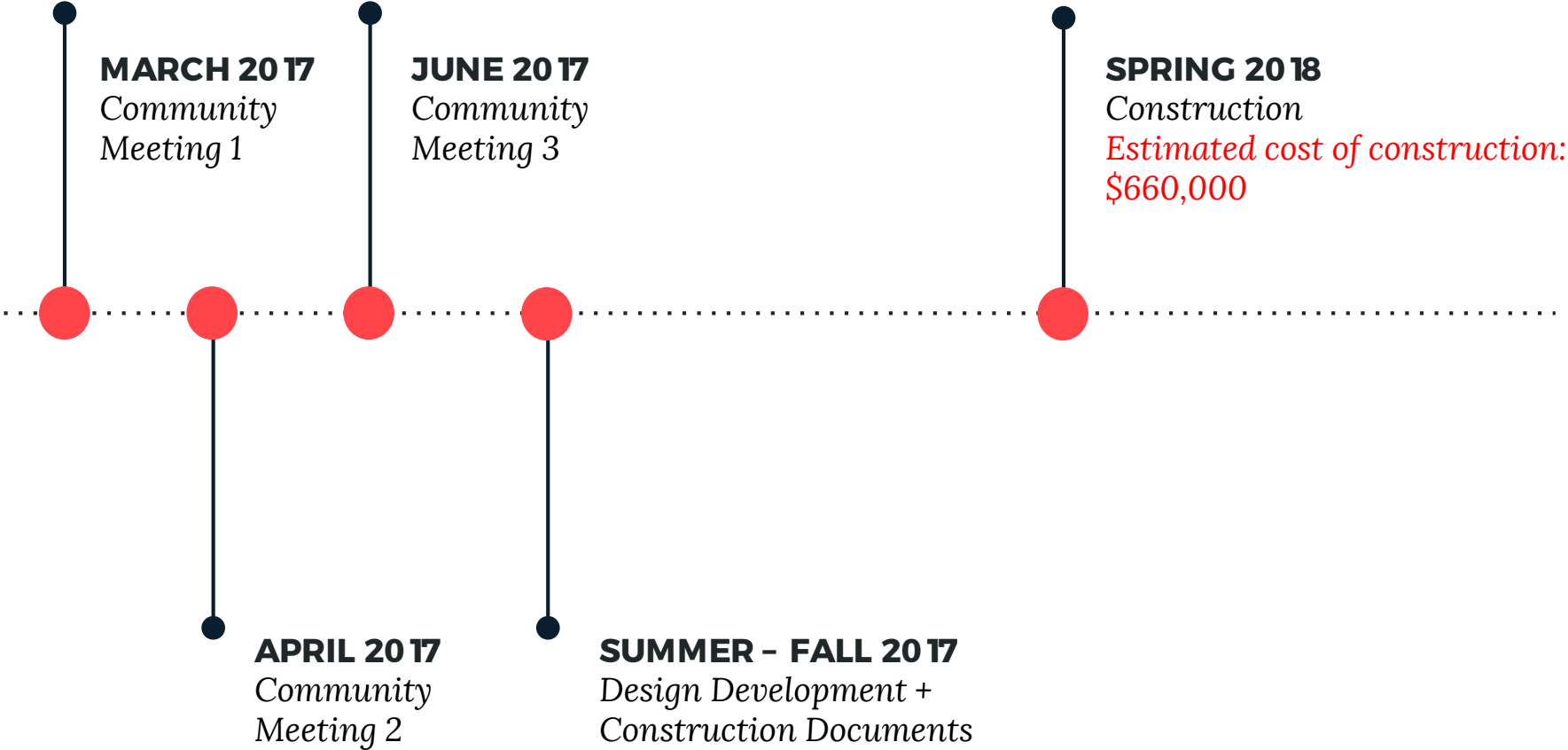
Building & Monument Conservation,  
Arlington, MA

Ivan Myjer



# PROJECT SCHEDULE & FUNDING

---





# PARK & RECREATION GOALS

---

- **Preserve and protect existing trees**
- **Expand usable park area**
- **Improve universal access**
- **Enhance park visibility**
- **Improve park access**
- **Design flexible, multi-functional park spaces**





City of Boston  
Initiatives

Safety Guidelines+  
Environmental  
Regulations

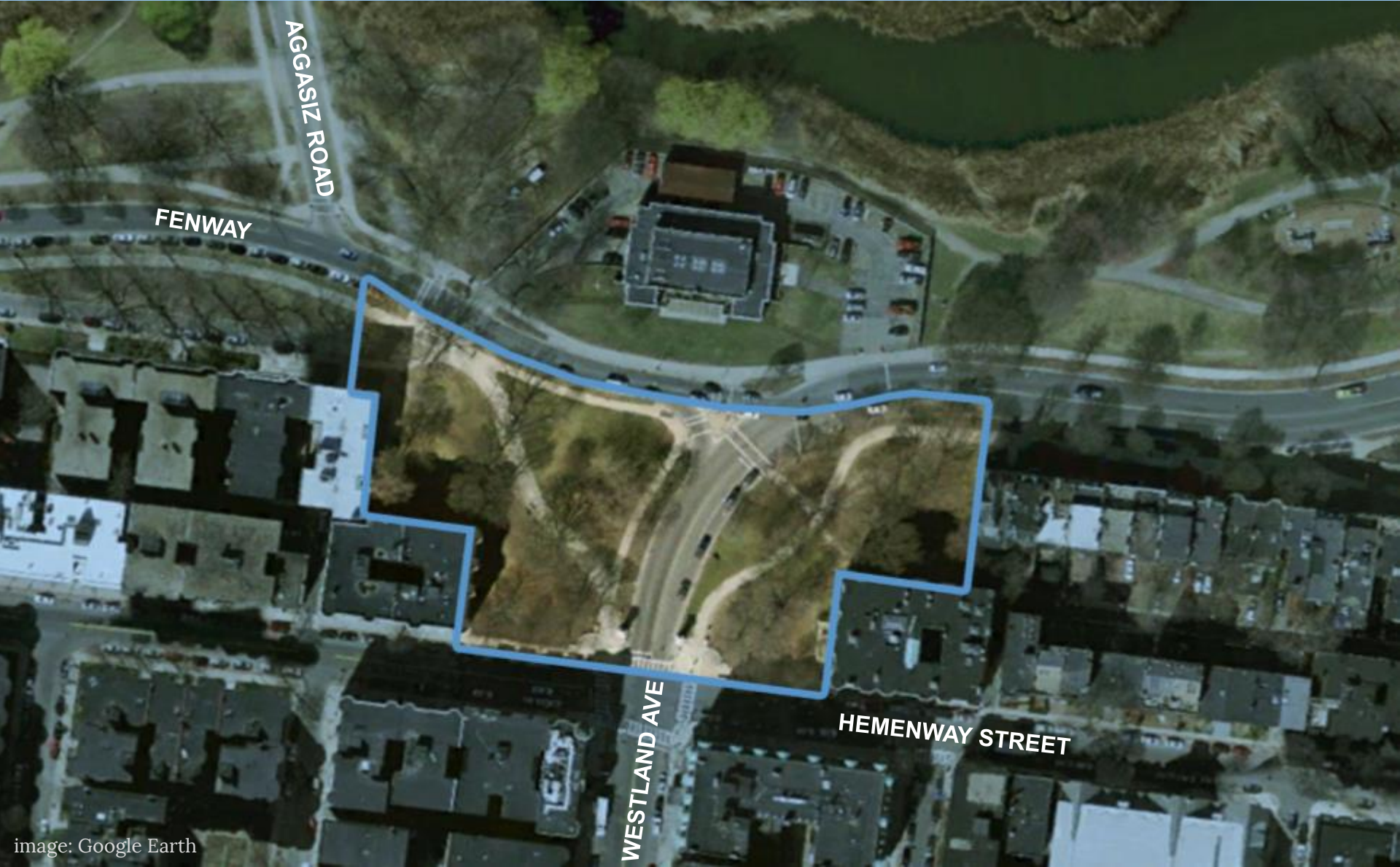
**PARK  
DESIGN**

Parks + Recreation  
Goals

Community  
Input



# PROJECT OVERVIEW





# SITE HISTORY

---





# SITE HISTORY

---



70139 ENTRANCE TO FENS, HEMENWAY ST., BOSTON, MASS.

# SITE HISTORY

---





# SITE HISTORY

---



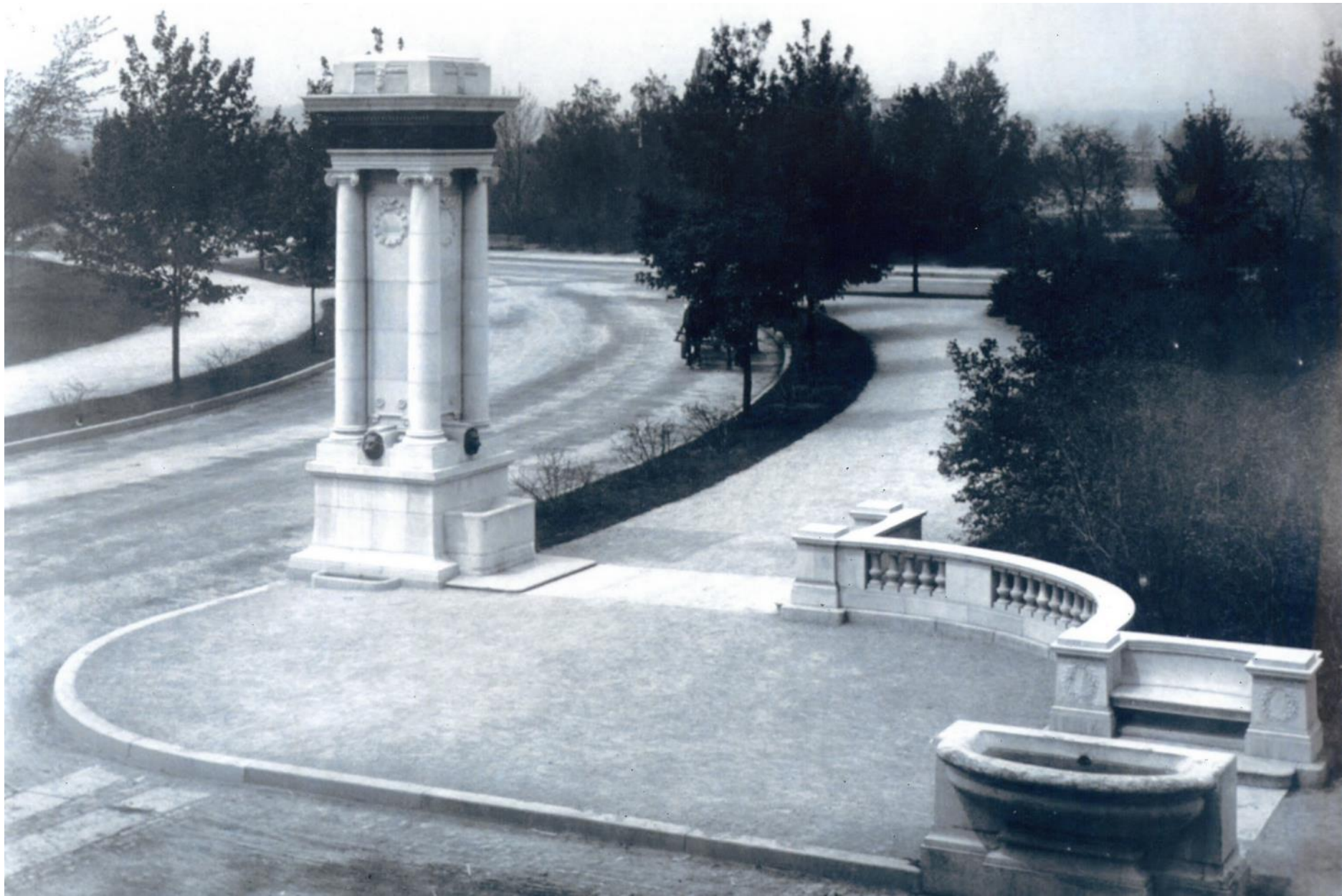
017072. ENTRANCE TO FENS, WESTLAND AVE., (JOHNSON MEMORIAL),  
BOSTON, MASS.

DETROIT PHOTOGRAPHIC CO.



# SITE HISTORY

---



# PROJECT GOALS

---

The scope of the design work includes:

- the **conservation** of the Johnson Gates, associated walls, stone work, and horse troughs on Hemenway Street
- the historic study and possible re-alignment of the **pathway systems** in the study area, with particular focus on **accessibility**
- **fencing** repair or replacement, and
- evaluation and restoration of the **lawn** areas and **trees** within the defined scope of work

# CONSERVATION OF THE JOHNSON GATES

## Conditions Assessment and Treatment Recommendations for the Masonry Components of the Johnson Gates Boston



**Completed for:**  
Ms. Marie Fukuda  
Fenway Civic Association, Inc.  
Box 230435, Astor Station  
Boston, MA 02123

**Completed by:**  
Ivan Myjer  
Lead Conservator  
Building and Monument Conservation  
83 School Street  
Arlington, Ma 02476  
617 834-3908  
myjer.ivan@ren.com

**December 6, 2013**

## Johnson Gates- North and South Piers Construction

The upper section of the piers consists of an enormous cap stone set on top of the cornice which consists of small units. The entablature stone under the bronze work is a single unit of stone.

The mortar joints in the two courses of the cornice are completely open. The entablature stone on each pier is cracked in several locations but the cracks are not structural.



Building and Monument Conservation

1

## South Trough

**View of interior of south trough  
with dutchman repair.**

**Exterior view of the same dutchman repair  
which is now damaged from impact.**



Building and Monument Conservation

10

# INVENTORY & ANALYSIS

---



**tree planting**



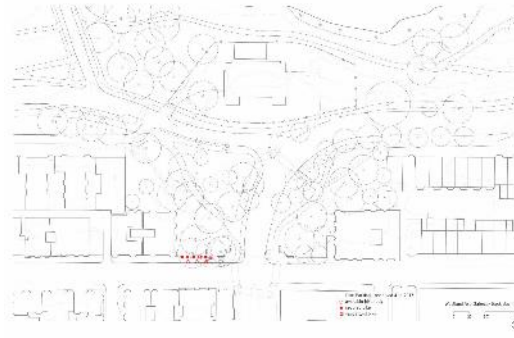
**shrub planting**



**lawn planting**



**desire lines**



**bicycle parking**



**site lighting**



# INVENTORY & ANALYSIS



# INVENTORY & ANALYSIS

---



**path inventory / accessibility**



# EXISTING CONDITIONS



BASE PLAN  
WESTLAND AVE GATEWAY

0 15 30 60

base plan

# DESIGN CONCEPTS



# DESIGN CONCEPTS

---



**scheme 1 - reinforce Shurcliff**



**scheme 2 - mirror Olmsted**



**scheme 3 - modify Olmsted**

# DESIGN CONCEPTS



**final scheme**

# DESIGN CONCEPTS



**final scheme**



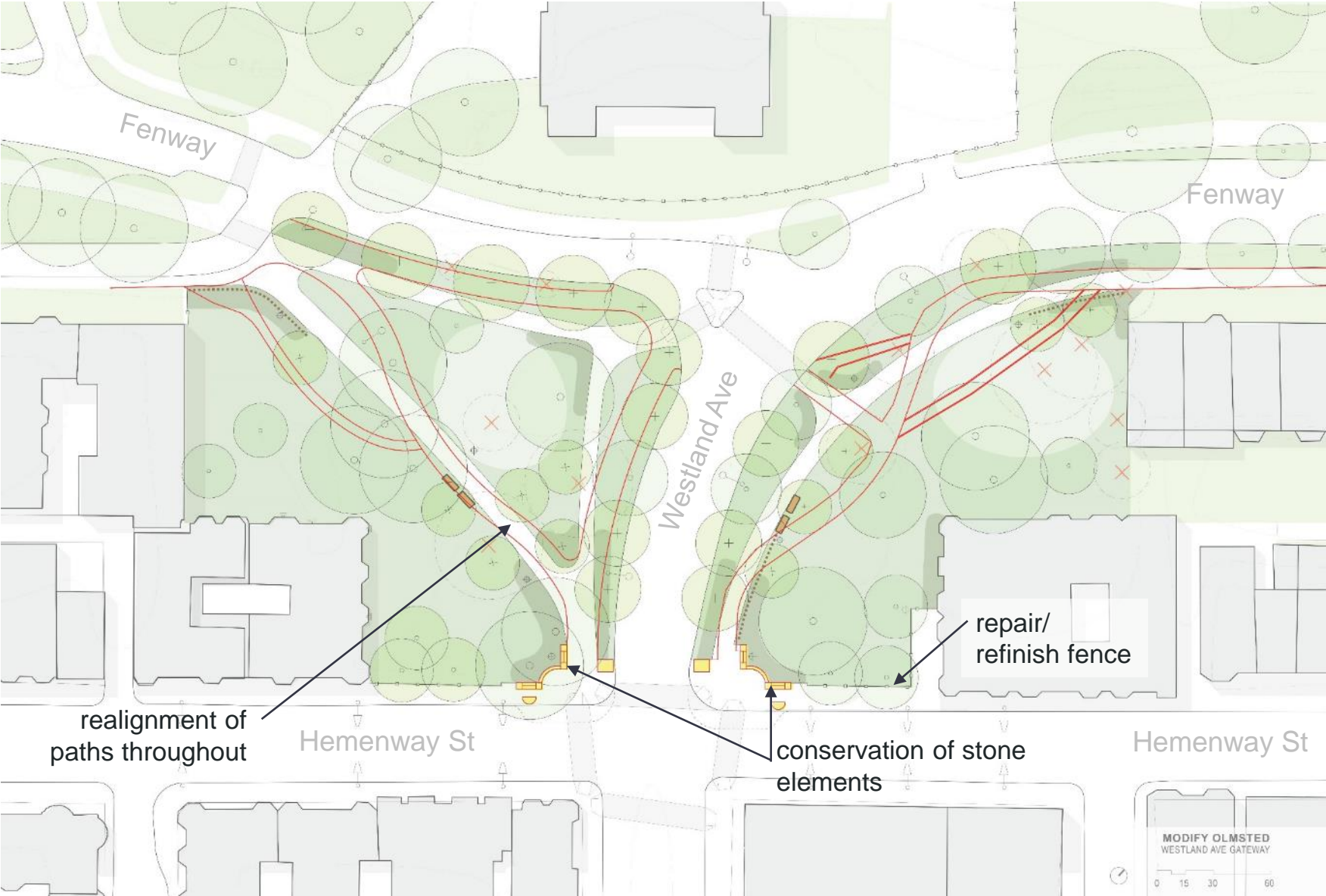
# DESIGN CONCEPTS



**final scheme**



# DESIGN CONCEPTS



**final scheme**

# DESIGN CONCEPTS



**final scheme**



# DESIGN CONCEPTS



**final scheme**

# DESIGN CONCEPTS



**final scheme**



# DESIGN CONCEPTS



**final scheme**

# DESIGN CONCEPTS





# DESIGN CONCEPTS

---



**existing pathway**



# DESIGN CONCEPTS

---



**proposed layout**

# PLANTING

# PLANTING: TREE WORK

---

## Tree Planting Goals:

- meet or exceed existing canopy coverage within 5-10 years of growth
- select species appropriate for Emerald Necklace with a preference towards native species
- select appropriate plants to increase biodiversity in this park as well as the larger park system



# PLANTING: TREE WORK



**tree preservation**

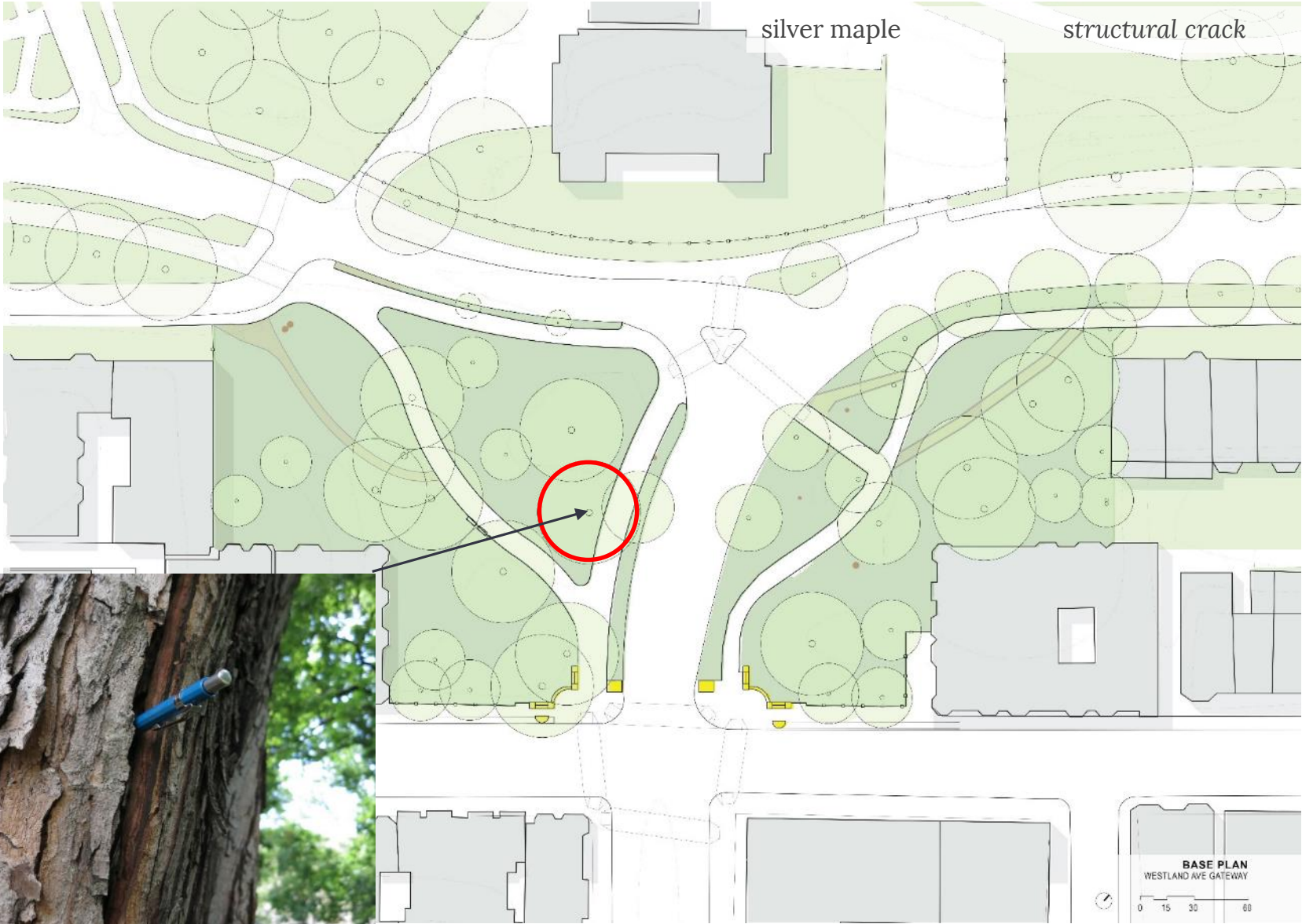
# PLANTING: TREE WORK



**tree removal**



# PLANTING: TREE WORK



**tree removal**



# PLANTING: TREE WORK



**tree removal**

# PLANTING: TREE WORK



**tree removal**



# PLANTING: TREE WORK



**tree removal**



# PLANTING: TREE WORK



**tree removal**

# PLANTING: TREE WORK





# PLANTING: PATH EDGING

---



**fence edging**



# PLANTING: PATH EDGING

---

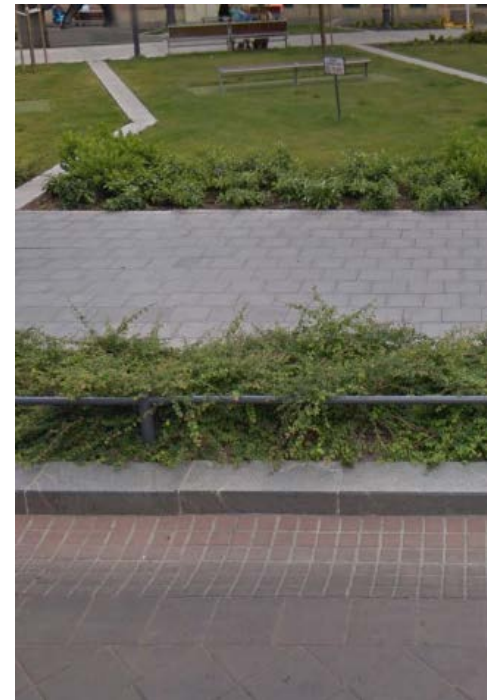


**rail edging**



# PLANTING: PATH EDGING

---



**rail + planting edging**

# PLANTING: SHRUB BUFFER

---





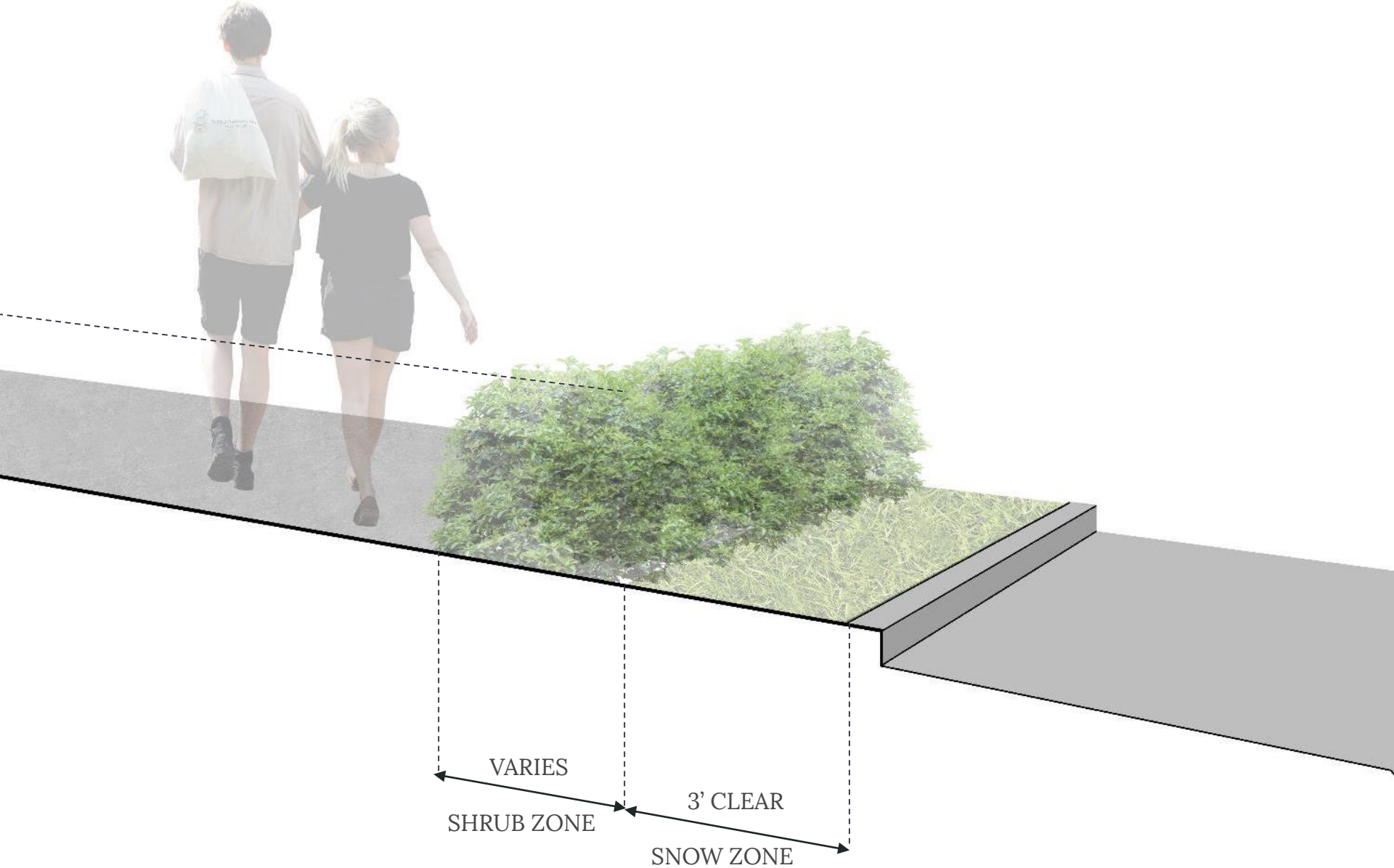
# PLANTING: SHRUB BUFFER

---



# PLANTING: SHRUB BUFFER

---



**buffer planting**



# PLANTING: LAWN IMPROVEMENTS

---





# PLANTING: LAWN IMPROVEMENTS



## Soil Test Interpretation

Nutrient	Very Low	Low	Optimum	Above Optimum
Phosphorus (P):	[Progress bar from Very Low to Optimum]			
Potassium (K):	[Progress bar from Very Low to Low]			
Calcium (Ca):	[Progress bar from Very Low]			
Magnesium (Mg):	[Progress bar from Very Low to Low]			

Sample ID: S1

Lab Number S170414-325



## Soil Test Interpretation

Nutrient	Very Low	Low	Optimum	Above Optimum
Phosphorus (P):	[Progress bar from Very Low to Optimum]			
Potassium (K):	[Progress bar from Very Low to Optimum]			
Calcium (Ca):	[Progress bar from Very Low to Low]			
Magnesium (Mg):	[Progress bar from Very Low to Optimum]			

Sample ID: S4

Lab Number S170414-328

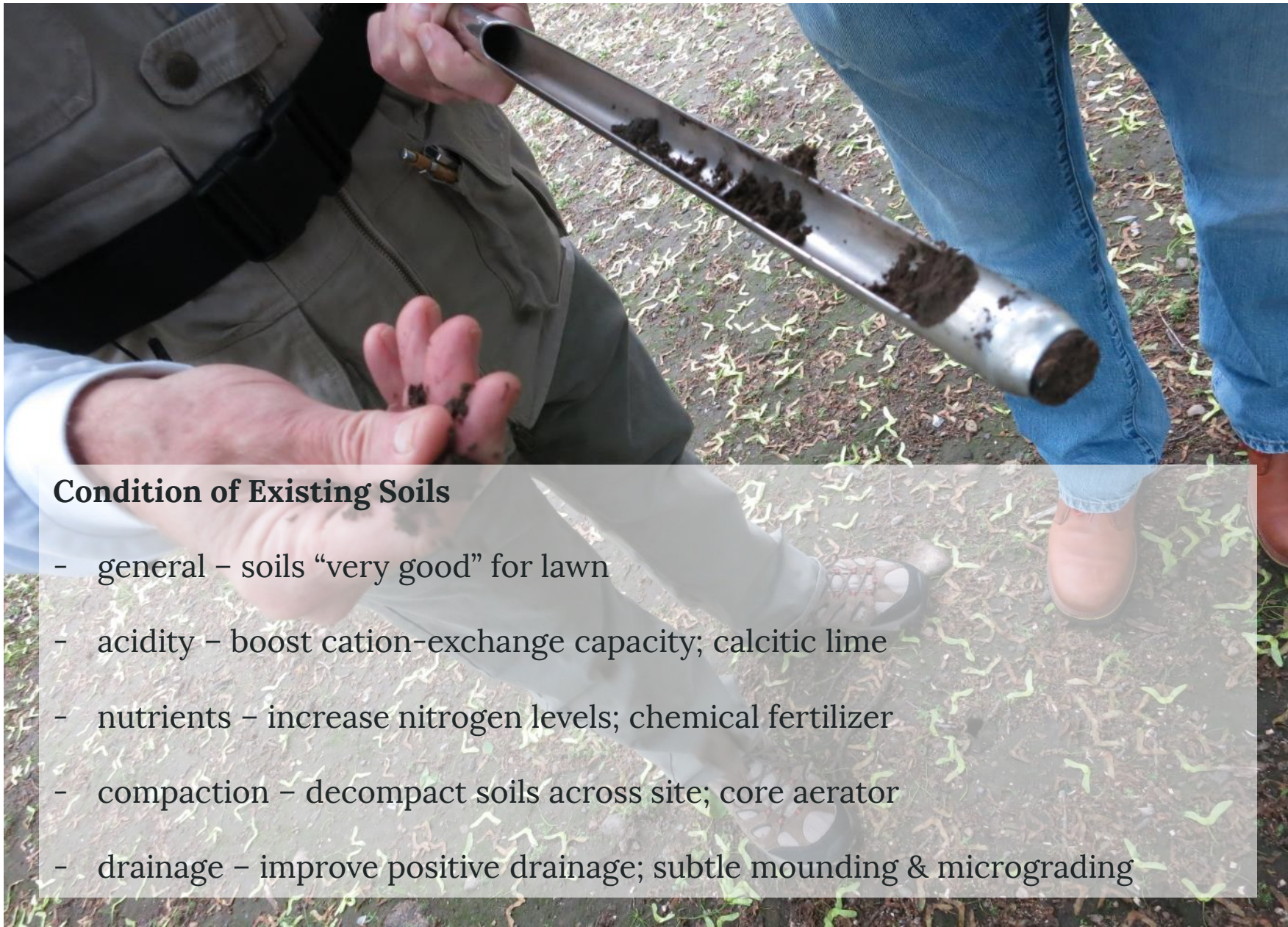
# PLANTING: LAWN IMPROVEMENTS

---





# PLANTING: LAWN IMPROVEMENTS



## Condition of Existing Soils

- general – soils “very good” for lawn
- acidity – boost cation-exchange capacity; calcitic lime
- nutrients – increase nitrogen levels; chemical fertilizer
- compaction – decompact soils across site; core aerator
- drainage – improve positive drainage; subtle mounding & micrograding



# LISTENING & DISCUSSION

Help us build great parks.  
Let us know what matters to you.





# THANK YOU!

Cathy Baker-Eclipse, Project Manager  
Cathy.Baker-Eclipse@boston.gov or 617-961-3058

Marchelle Jacques-Yarde, Outreach Coordinator, External Affairs  
marchelle.jacques-yarde@boston.gov or 617-961-3006

For questions, maintenance requests or concerns regarding any of our parks  
contact 311

