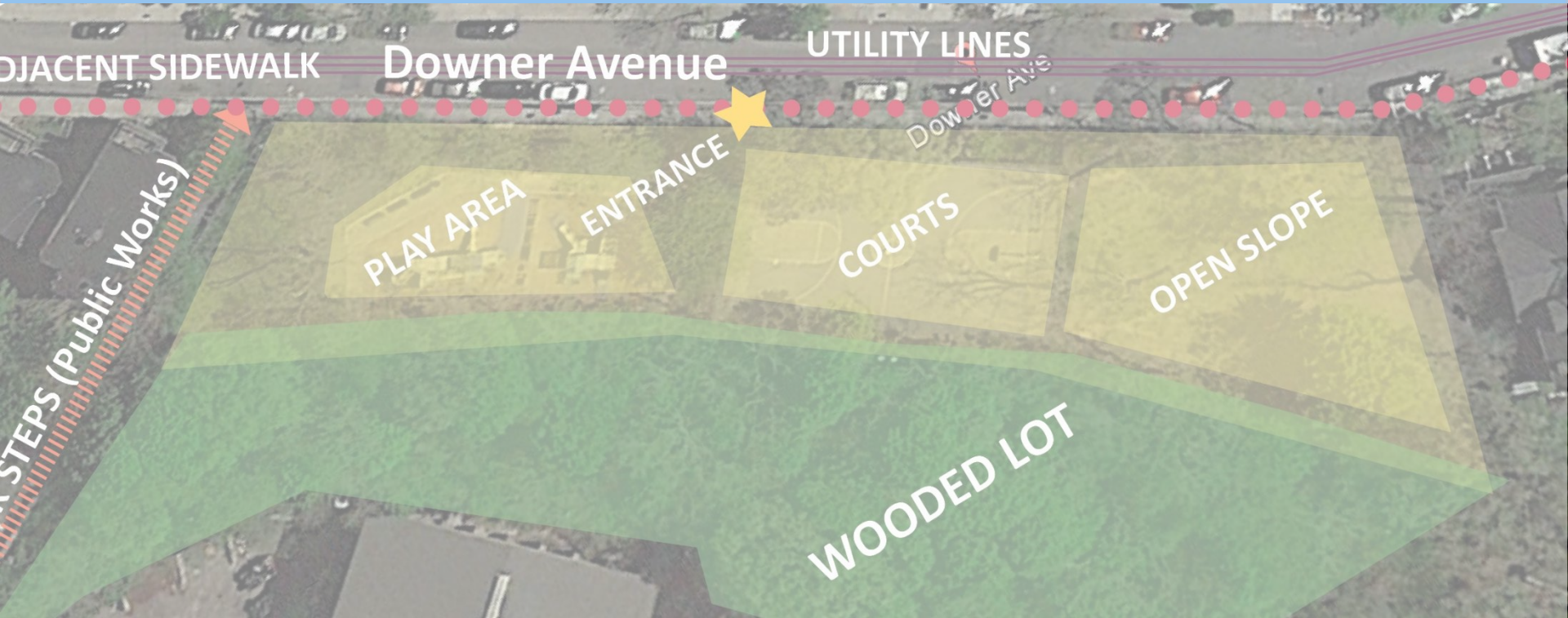


# *Improvements to* **DOWNER AVE. PARK**





# PROJECT OVERVIEW



# AGENDA

---

1

**PROJECT TEAM INTRODUCTION**

---

2

**PROJECT OVERVIEW**

---

3

**PRESENTATION**

---

4

**LISTENING & DISCUSSION**

---

5

**CLOSING REMARKS & NEXT STEPS**

---

# PROJECT TEAM

---



**Michele Folts, Project Manager**

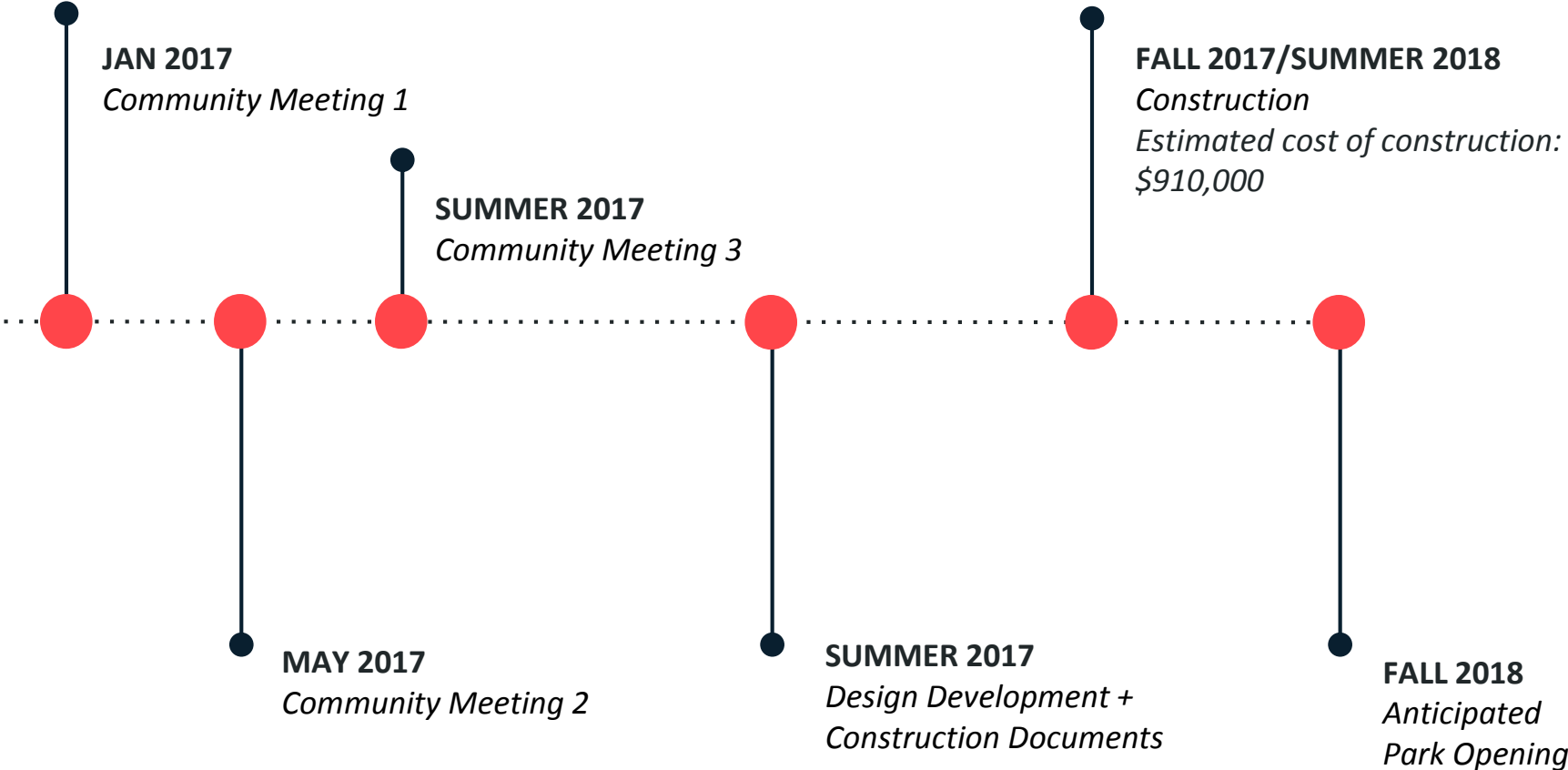
**ground**

**Shauna Gillies-Smith, Landscape Architect**



# PROJECT SCHEDULE & FUNDING

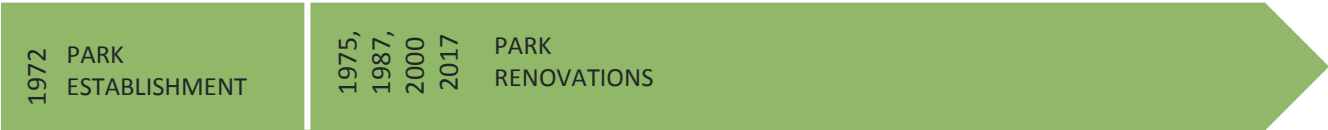
---



# PARK TIMELINE

---

Downer Ave.  
Park



Design+  
Construction



Park  
Maintenance



Friends  
Group



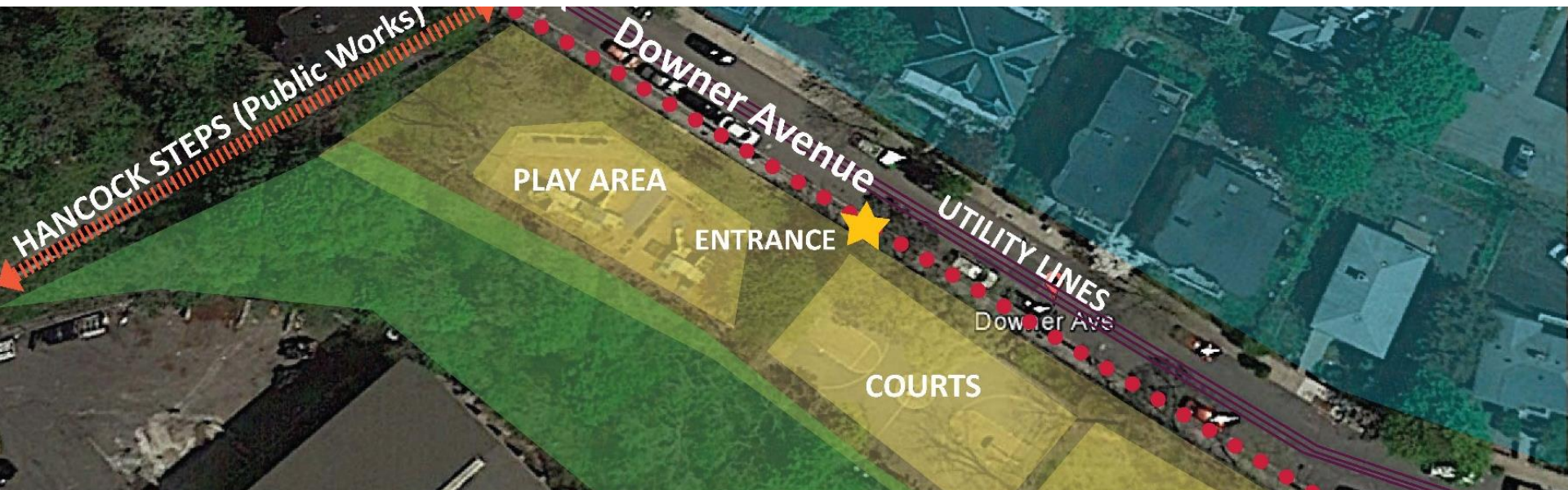




# CITY OF BOSTON PRIORITIES

---

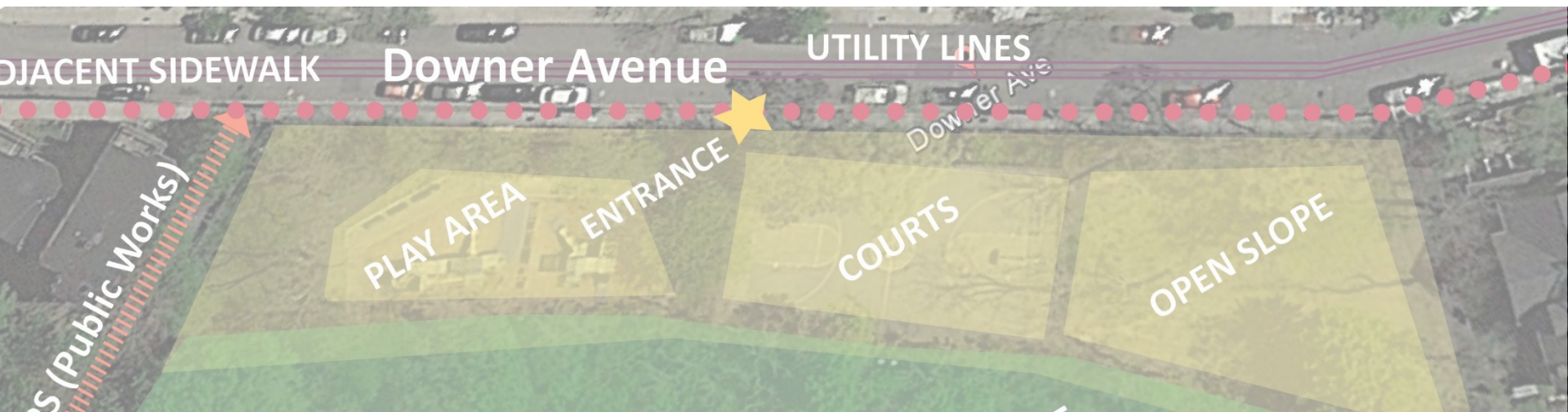
- Expanding walkable access to parks
- Addressing equity
- Climate resilience
- Health
- Housing and community building



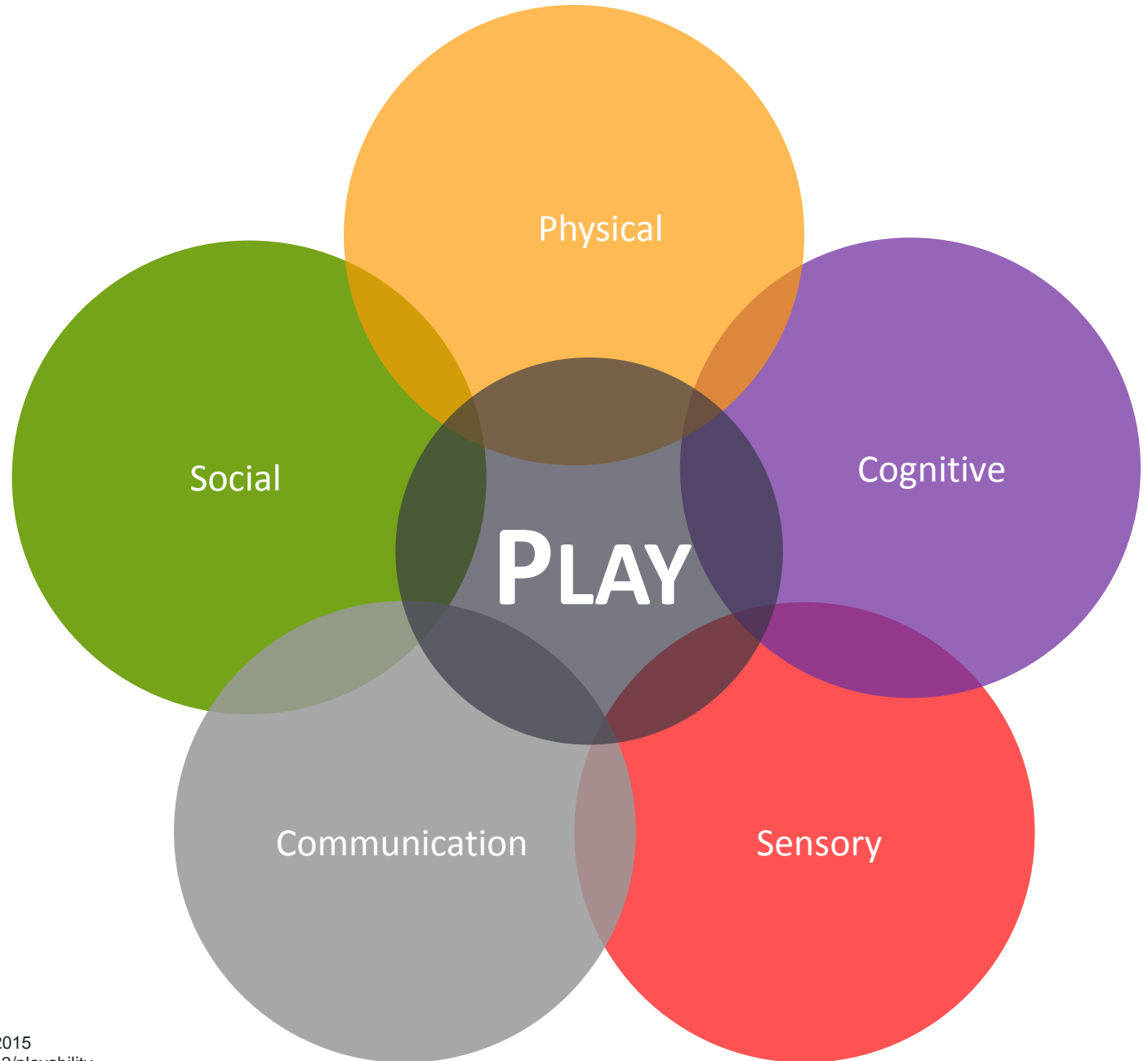
# PARK & RECREATION GOALS

---

- Preserve And Protect Existing Trees
- Expand Usable Park Area
- Improve Universal Access
- Enhance Park Visibility
- Improve Access to Parks
- Design Flexible, Multi-functional Park Spaces



THE **5**  
ELEMENTS  
OF  
PLAY





## **SOCIAL/ EMOTIONAL**

COOPERATION, DRAMATIC +  
IMAGINATIVE PLAY



SEATING + TABLE AREAS, THEMATIC PLAY  
ELEMENTS (SHIPS), PLAY HOUSES

## **PHYSICAL**

GROSS MOTOR/ FINE MOTOR SKILLS,  
FLEXIBILITY, ACCESSIBILITY, HEALTHY RISK +  
VARIETY



DISH SWINGS, MOVEABLE OBJECTS,  
SWINGS, MONKEY BARS, BALANCE

## **SENSORY**

TOUCH, VISUAL. AUDITORY, SMELL  
VESTIBULAR, PROPRIOCEPTIVE +  
INTEROCEPTIVE



PUSH/ PULL ELEMENTS  
WATER ELEMENTS, VARIED TEXTURES +  
COLORS, SPINNING, MOVEABLE OBJECTS,  
ROCKING

## **COGNITIVE**

CREATIVITY, SENSE OF ACCOMPLISHMENT,  
PROBLEM-SOLVING, CAUSE + EFFECT, RISK  
ASSESSMENT



INTERACTIVE WATER ELEMENTS, ROPE  
CLIMBER, LINKED PLAY ELEMENTS

## **COMMUNICATION**

DEVELOPMENT OF RECEPTIVE + EXPRESSIVE  
LANGUAGE



TALK TUBES, SLIDES, THEMATIC PLAY  
ELEMENTS, TRIKE TRACK, SEE SAWS

# SITE ANALYSIS



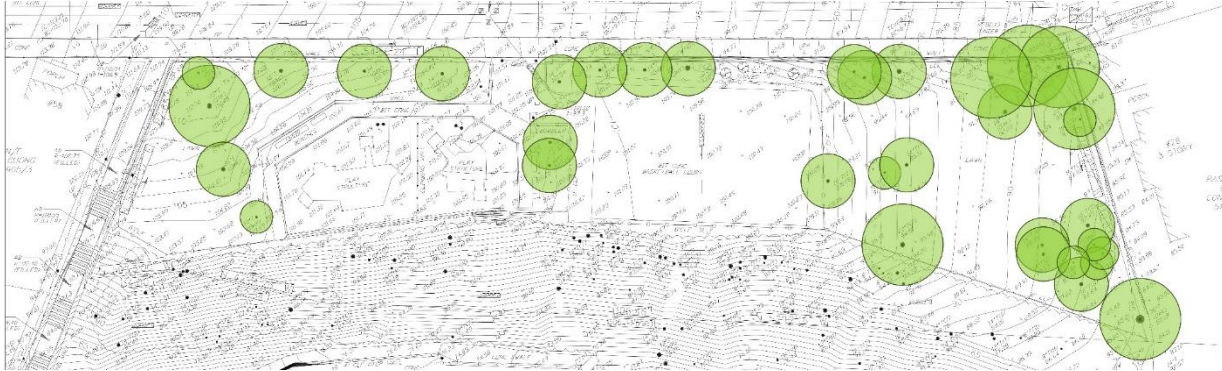


# PROJECT SITE: EXISTING CONDITIONS





# SITE ANALYSIS—EXISTING



Large Amount of  
Green Open Space

Mature Trees





# SITE ANALYSIS—SITE

Existing Stone Wall



Clearly Defined Park Entrance



Elevated Views

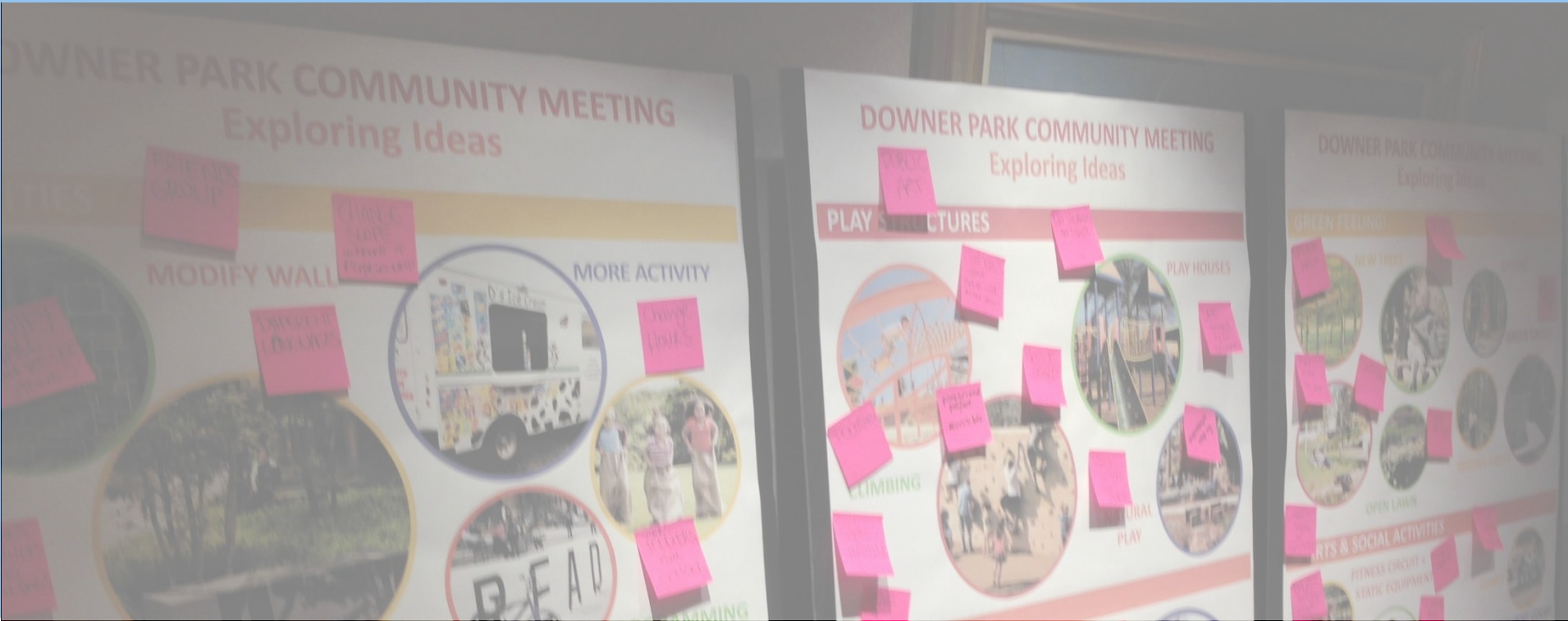


Wooded Lot



Connection to Hancock St.

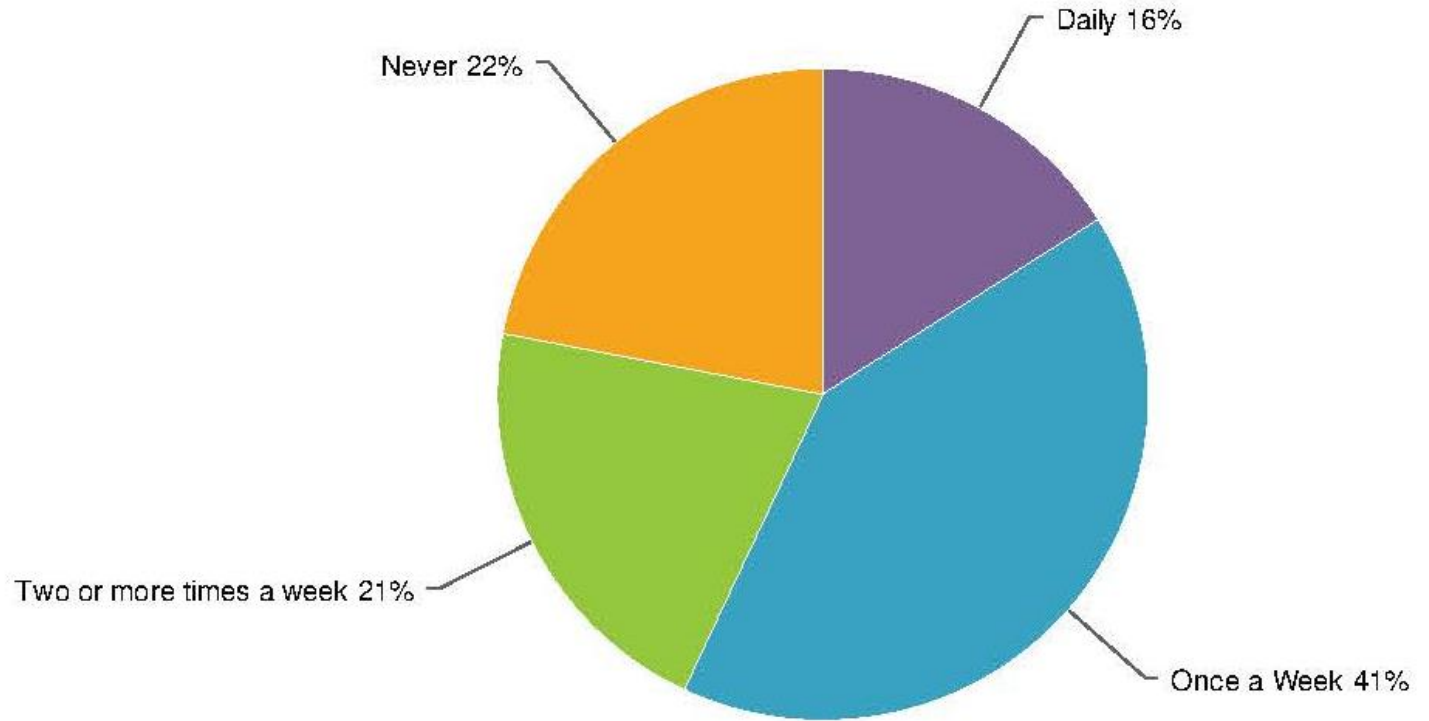
# ENGAGEMENT RESULTS





# PROJECT KICK OFF SURVEY

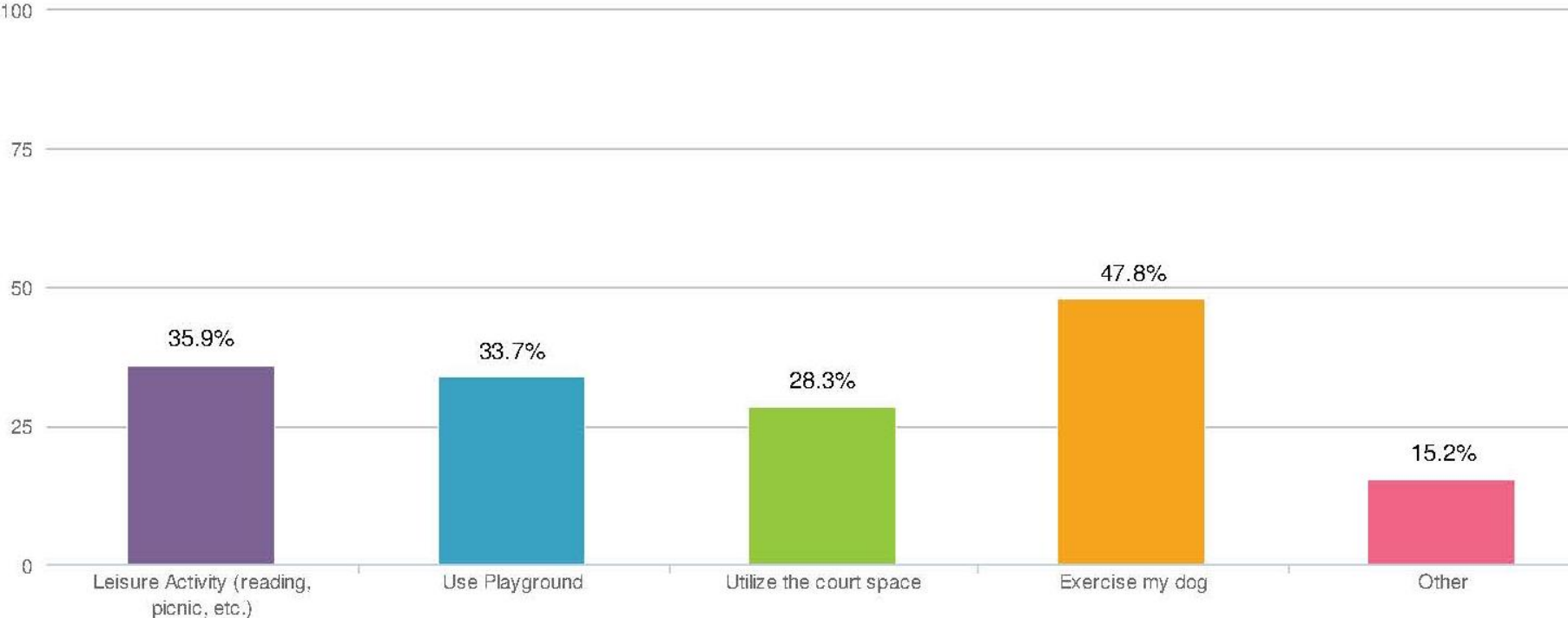
1. How often do you visit Downer Avenue Park?



Approx. 100 responses

# PROJECT KICK OFF SURVEY

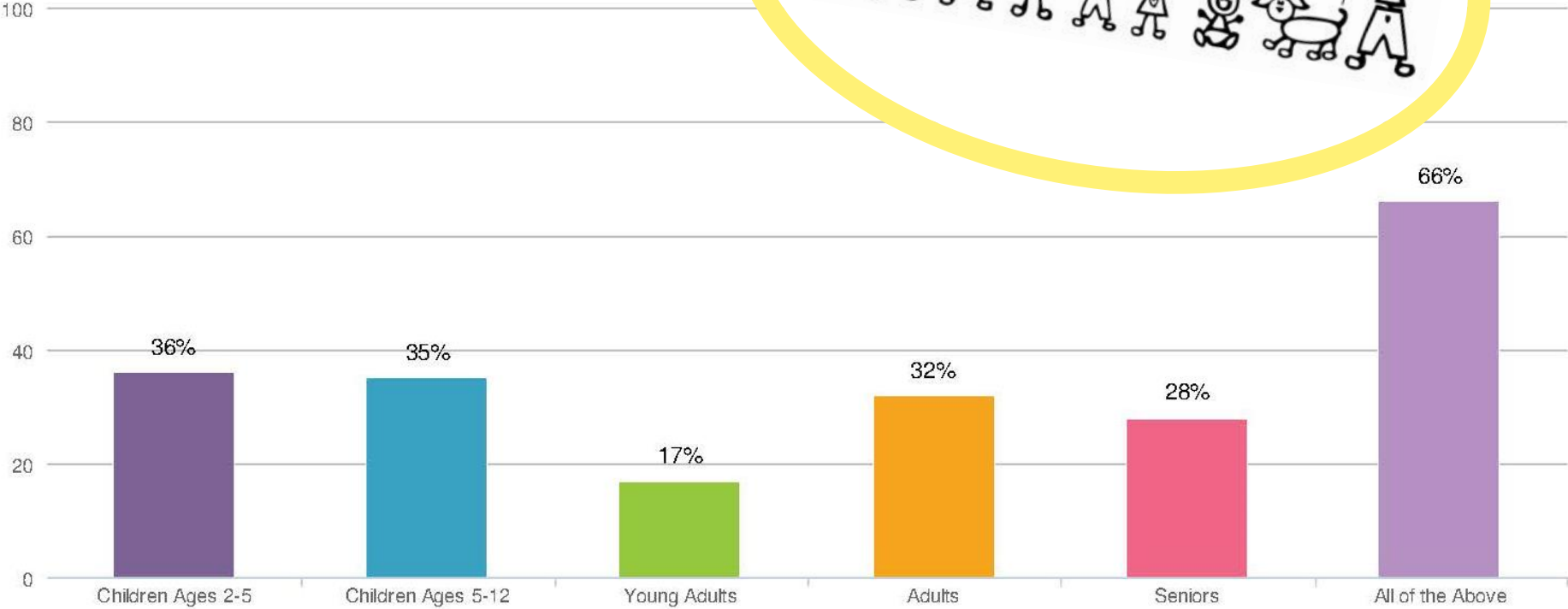
2. When you visit Downer Avenue Park, what do you do? (Select ALL that apply)





# PARK USERS

5. Who would you like this park/playground to serve?



# COMMUNITY MEETING 1

01-25-2017



# WHAT WE HAVE HEARD IN MEETING1

## ACTIVITIES:

- FRIENDS GROUP
- ACTIVITIES FOR ADULTS  
W/NO KIDS/DOGS
- GAMES TABLES
- BASKETBALL COURT
- FITNESS AREA
- STAIRS FOR EXERCISE

## DESIGN:

- MODIFY WALL AND REUSE STONES
- FOUNTAIN (SPLASH PAD)
- WALK THROUGH THE PARK

## SPACE:

- SPACE FOR RELAXATION
- SPACES FOR TODDLERS
- SPACES FOR YOUNG ADULTS
- MEETING SPACE
- PUBLIC ART
- MORE OPEN AND INVITING
- PLAYGROUND PROJECT
- MORE ACCESSIBLE
- OPEN GREEN SPACE FOR DOGS
- NATURAL AREA
- A WAY TO SEE THE VIEW
- PLACE TO SIT

# DESIGN OPTIONS

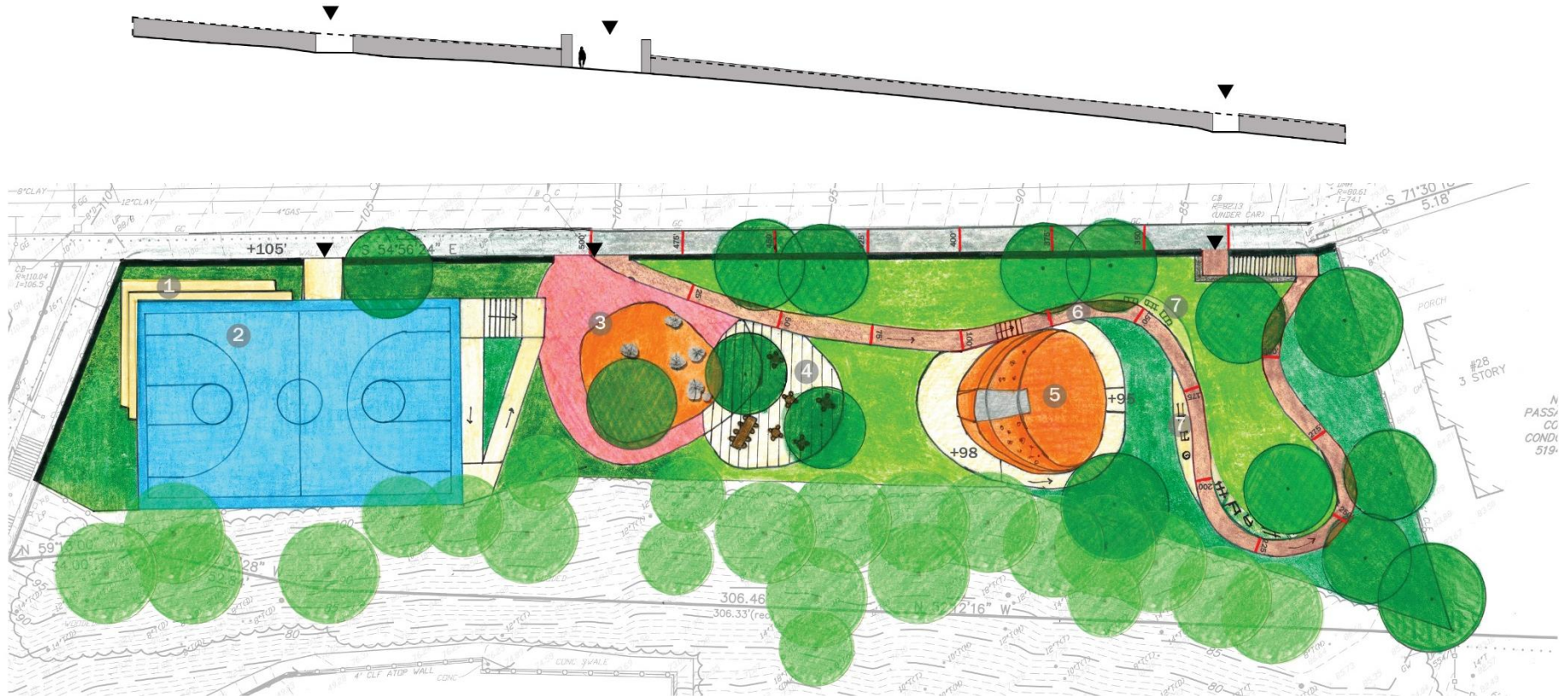
## GOALS FOR TODAY:

- CONSIDER THREE DIFFERENT APPROACHES
- DISCUSS LIKES AND DISLIKES ABOUT THE DIFFERENT ORGANIZING STRATEGIES
- DISCUSS LIKES AND DISLIKES ABOUT THE DIFFERENT PARK ELEMENTS
- OTHER IDEAS





# OPTION A – ACTIVITY ISLANDS

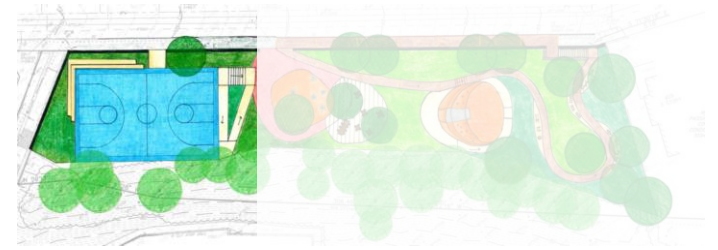


- ① Stepped Seatwalls
- ② Basketball Court
- ③ Play Area
- ④ Seating Area
- ⑤ Slide, Climbing Landform Play Area
- ⑥ Fitness Path
- ⑦ Fitness Structures

▼ Entrance

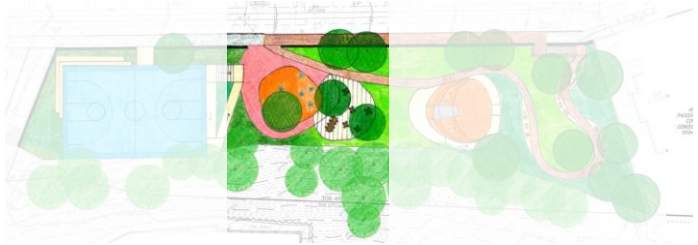


# Full-size Basketball Court



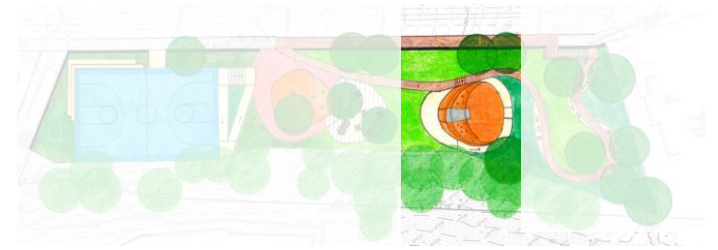


# Play and Seating Area



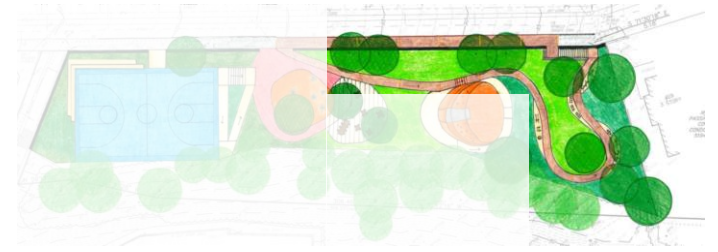


# Slide and Landform





# Fitness Trail

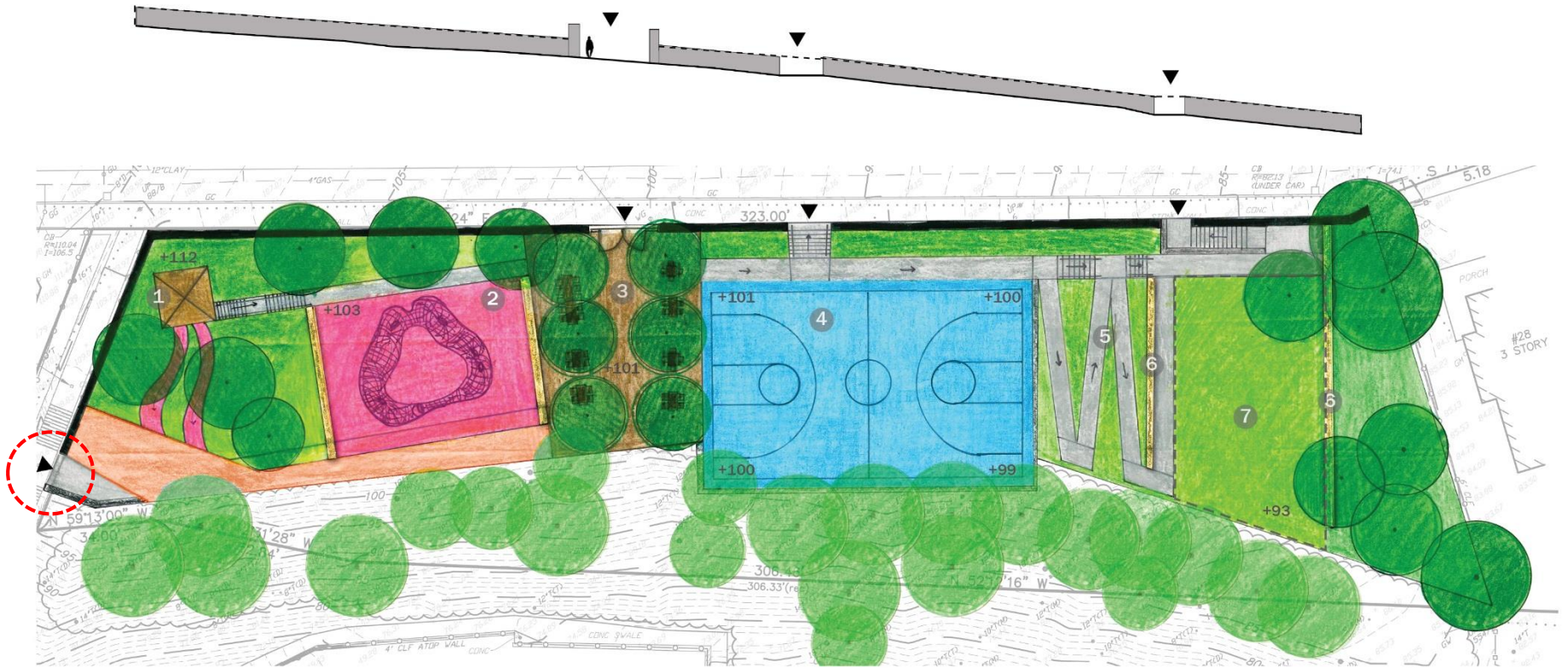


# OPTION A\_EXISTING AND NEW TREES





# OPTION B - TERRACES

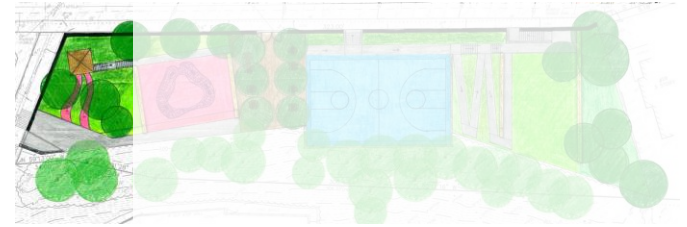


- 1 Playhouse and Slide
- 2 Play Structure
- 3 Seating Area
- 4 Basketball Court
- 5 Sloped Walkway
- 6 Seatwall
- 7 Lawn/Optional Dog Run

- ▼ Entrance  
----- Optional Dog Fence

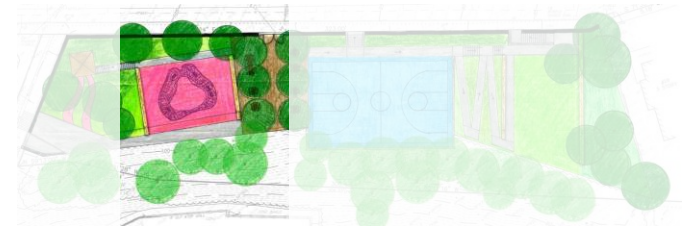


# Platform and Slide





# Play Structure



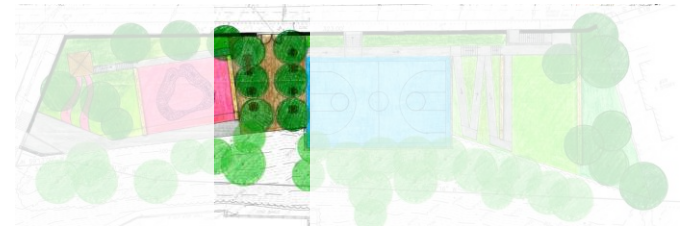


# Full-size Basketball Court

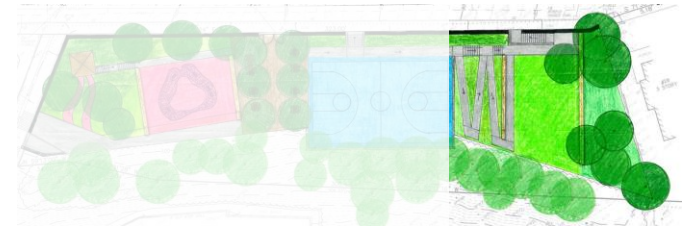




# Seating Area

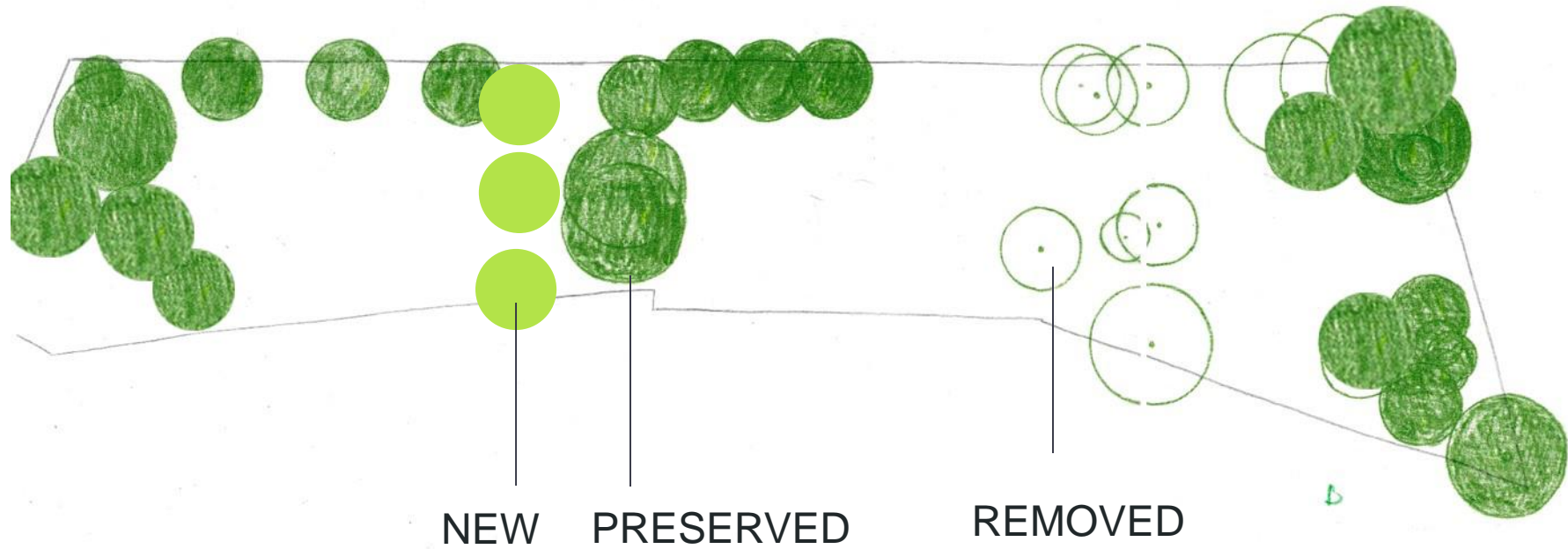


# Lawn and Seatwall or Dog Run



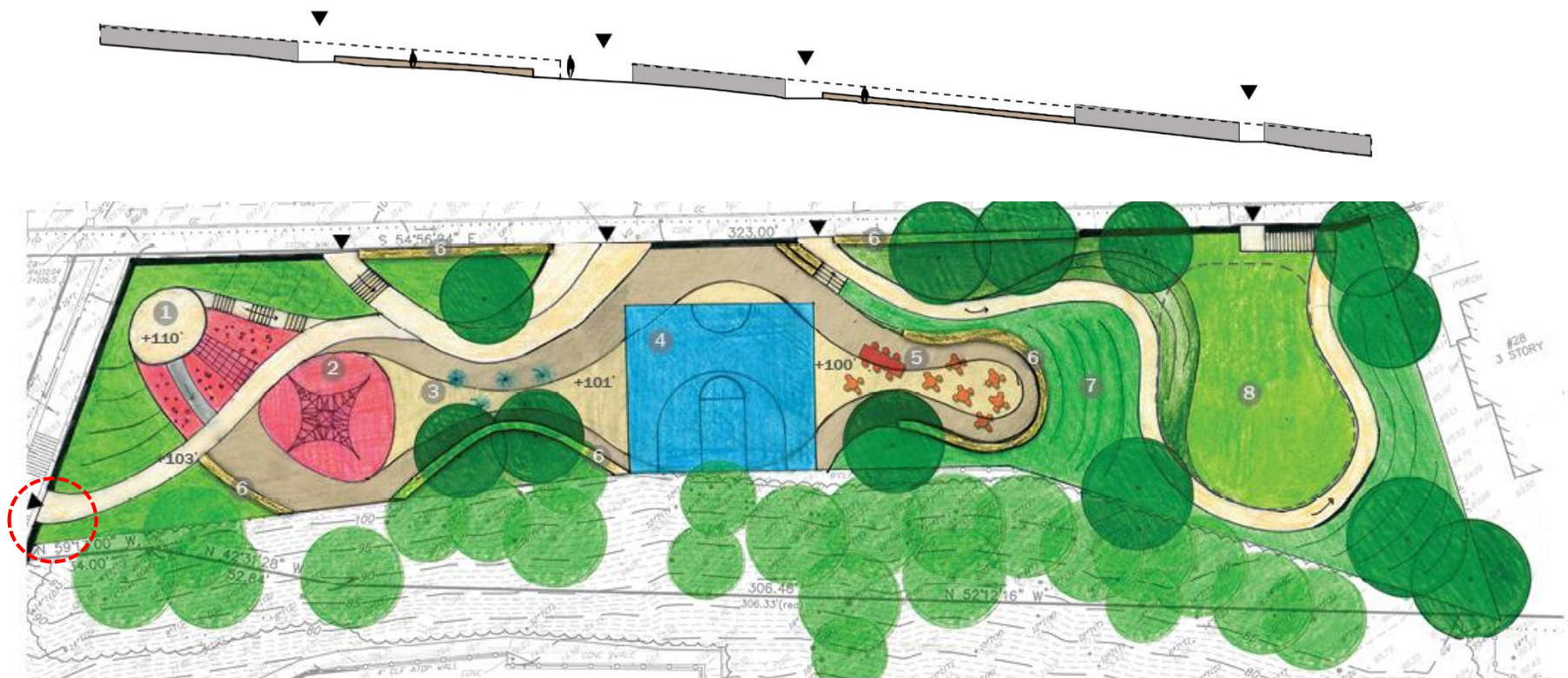


# OPTION B\_EXISTING AND NEW TREES





# OPTION C - PLATEAU



- ① Climbing Wall and Slide
- ② Play Structure
- ③ Splash Pad
- ④ Half Basketball Court
- ⑤ Seating Area
- ⑥ Seatwall
- ⑦ Sloped Lawn
- ⑧ Lawn/Optional Dog Run

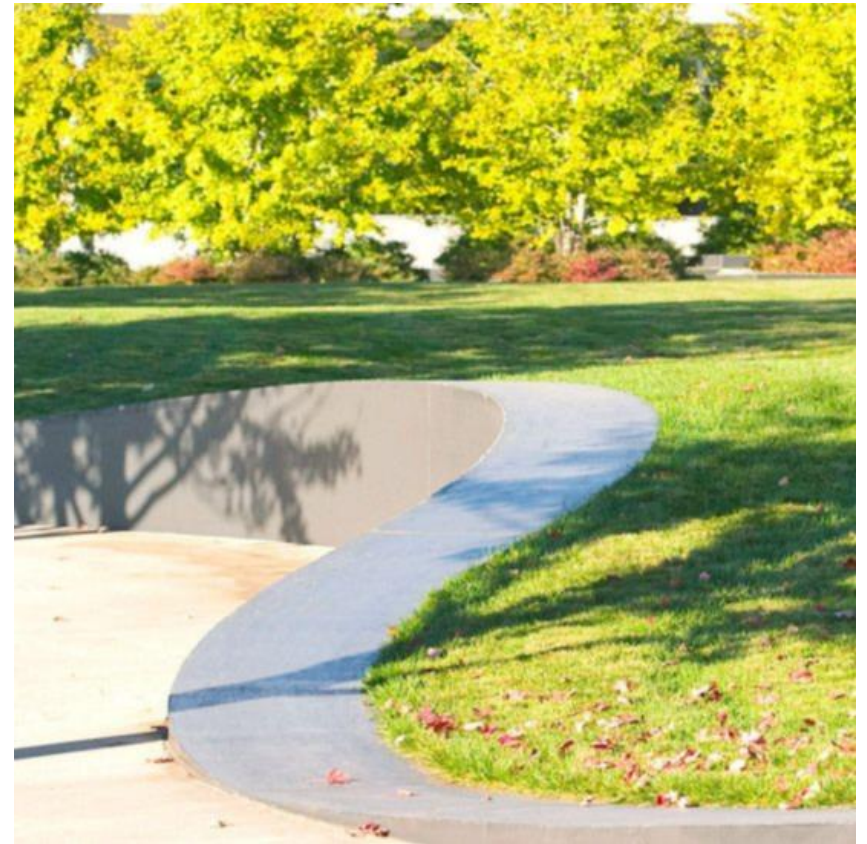
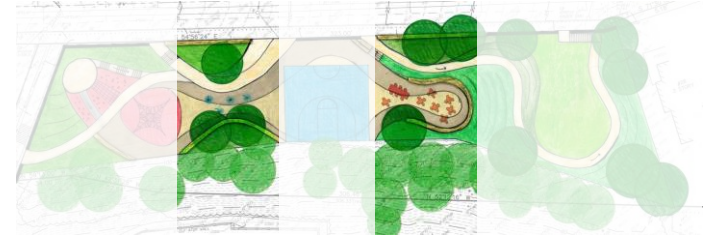
- ▼ Entrance
- Optional Dog Fence

# Play Area





# Splash Pad and Seatwall





# Half-size Basketball Court

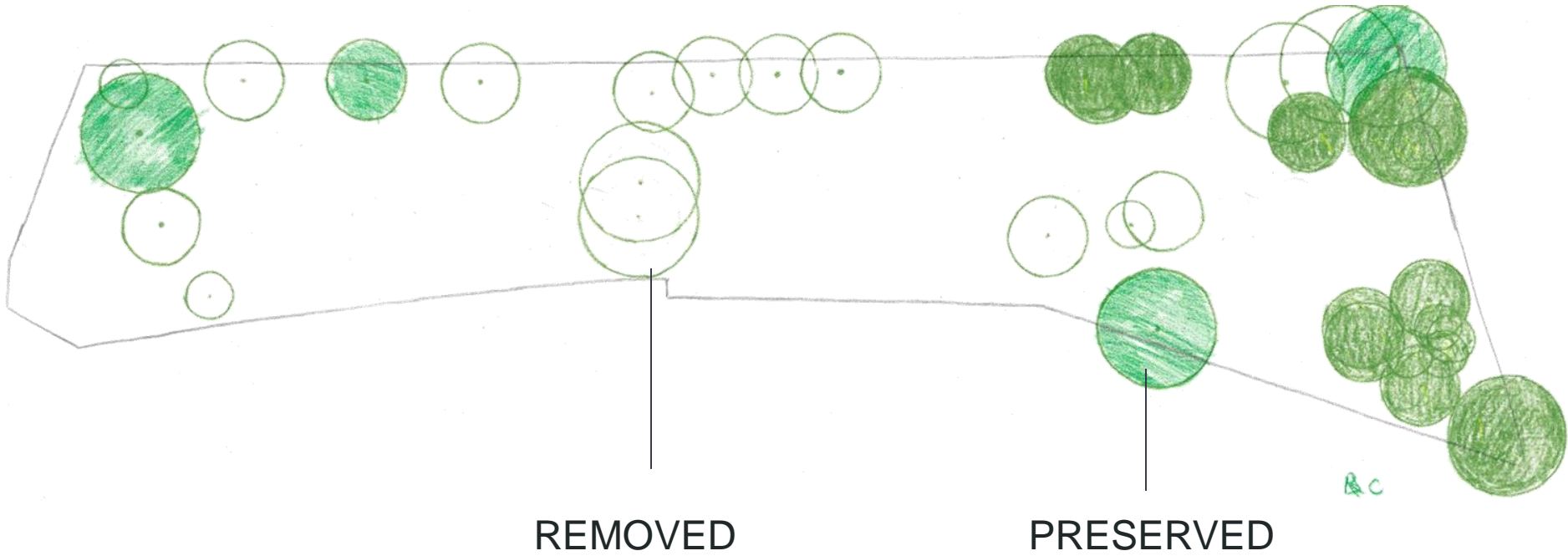




# Lawn or Dog Run

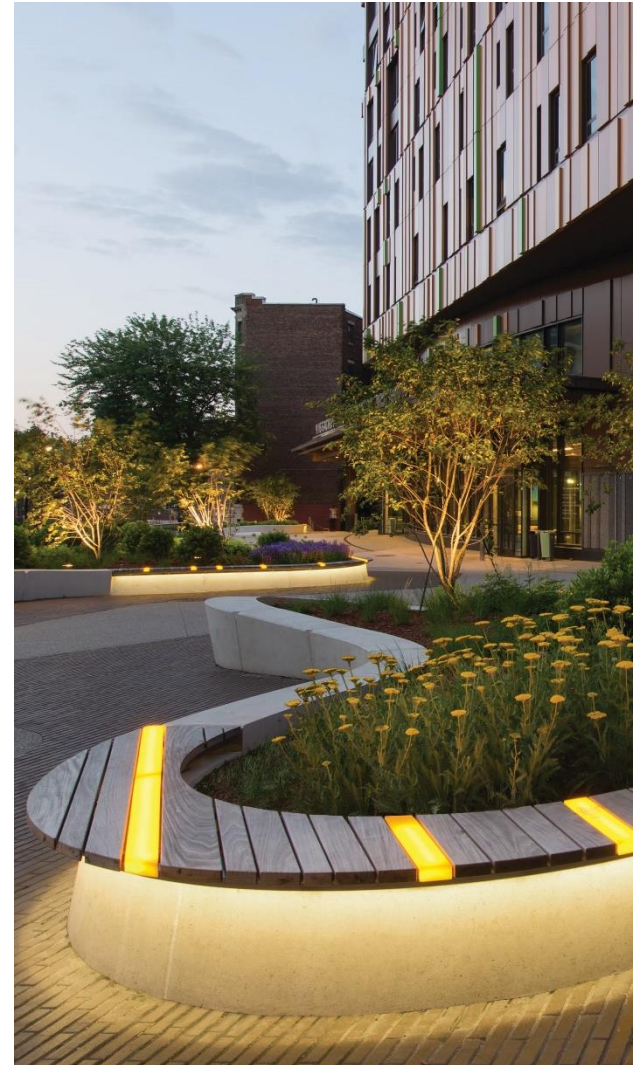


# OPTION C\_EXISTING AND NEW TREES





# LIGHTING CONCEPTS\_within Site



On Play Structure

With Separate Elements

With Seating



# LIGHTING CONCEPTS\_within Woods



On the Fence

In the Trees





# LISTENING & DISCUSSION

Help us build great parks.  
Let us know what matters to you.

# THANK YOU!

## Next Meeting TBD

For questions, maintenance requests or concerns regarding any of our parks contact 311

