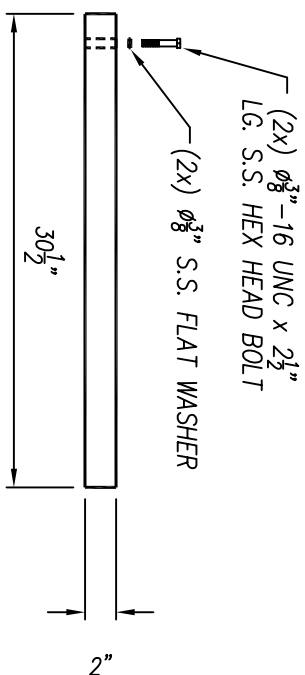
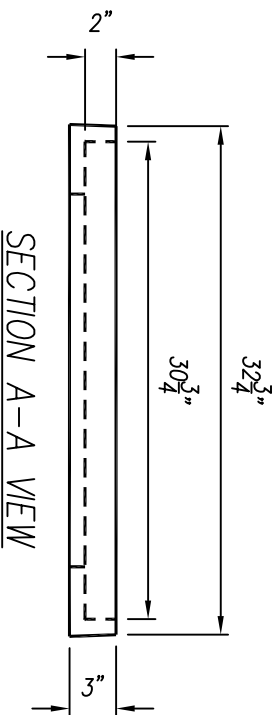
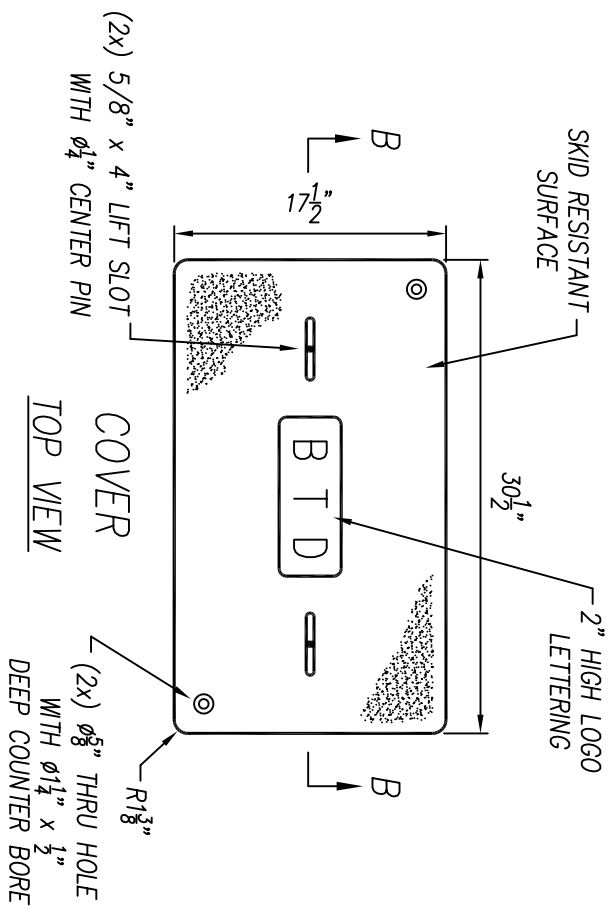
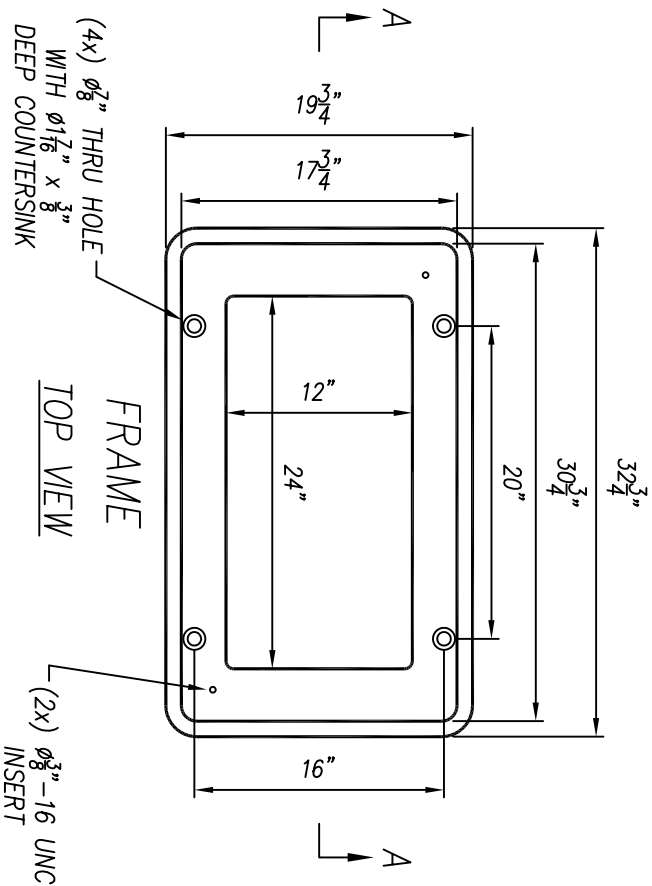


BTD POLYMER FRAME & COVER ASSEMBLY



- NOTE:
1. THE LOGO SHALL BE LABELED BTD CAST INTO THE COVER.
 2. THE FRAME & COVER SHALL BE CONCRETE GREY IN COLOR.
 3. THE FRAME & COVER SHALL BE FURNISHED WITH (4) $\frac{3}{4}$ "-10 UNC x 2" AND (4) $\frac{3}{4}$ "-10 UNC x 6" LONG SOCKET FLAT HEAD CAP SCREWS
 4. THIS ASSEMBLY SHALL BE RATED FOR A MINIMUM STATIC DESIGN LOAD OF 15,000 LBS. OVER A 10" SQUARE AREA

NOT TO SCALE

A8.2