

BOSTON COMMON

*Future Capital Improvements
Community Briefing*



October 26, 2016
Boston Parks and Recreation



Boston Parks and Recreation Staff

Margaret Dyson

Director of Historic Parks

margaret.dyson@boston.gov or 617-961-3028

Michele Folts

Project Manager, Design & Construction

michele.folts@boston.gov or 617-961-3025

Marchelle Jacques-Yarde

Outreach Coordinator, External Affairs

marchelle.jacques-yarde@boston.gov or 617-961-3006



Boston Common



Boston Common: Capital Improvements Recently Completed + Planned

Pathways: Phase 2

Stair Improvements at Walnut Street and Opposite 41 Beacon St.

Pathways: Phase 3

Flagstaff Hill including Soldier's and Sailor's Monument.

Pathways: Phase 1

McArthur Mall at Athletic Fields

Frog Pond (PFD)

Shaw Memorial Accessibility Study

Parkman Plaza + Tremont Street Edge

**Pathways: Phase 4
Boylston Street Sidewalk**

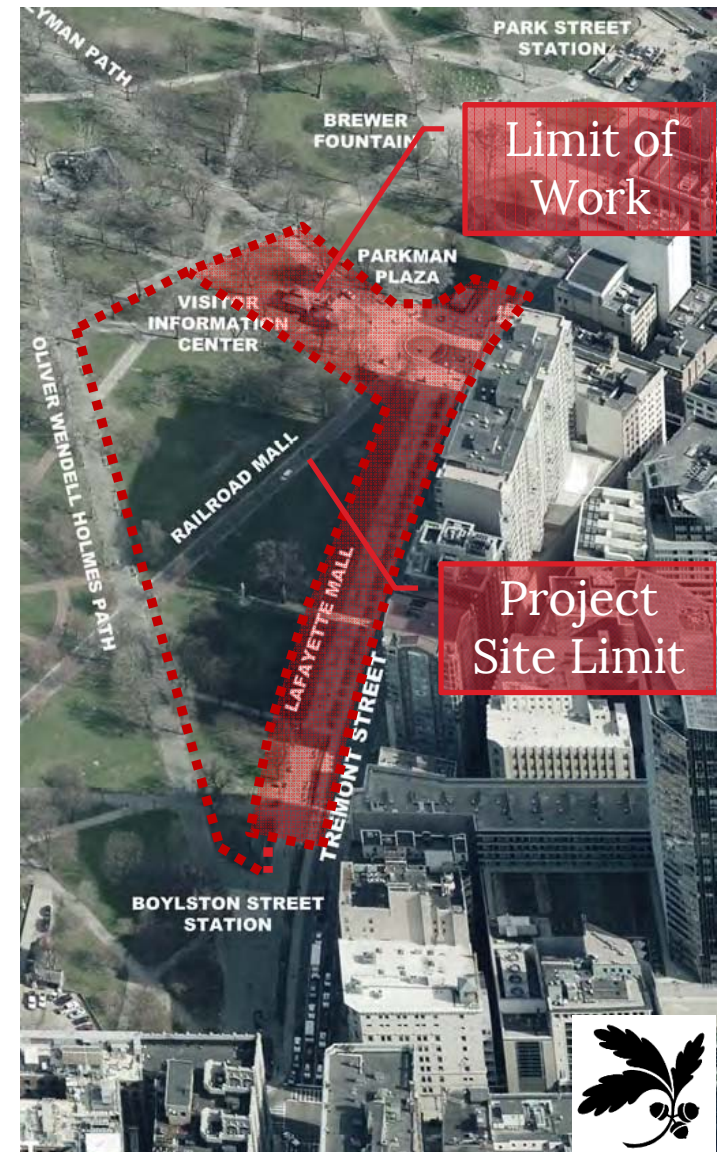


Boston Common

Parkman Plaza + Tremont Street Edge

Estimated Cost of Construction Improvements: \$3,500,000

- NOVEMBER 2016**
Project available for bid
- WINTER 2016-2017**
Construction Begins
The Limit of Work within the Project Site Limit may shift throughout the construction period to maximize the available parkland to the public.
- JULY 2017**
Construction Substantially Complete
Construction completion is partially dependent up the severity of the winter and how much work may be accomplished in the winter months (January-April)



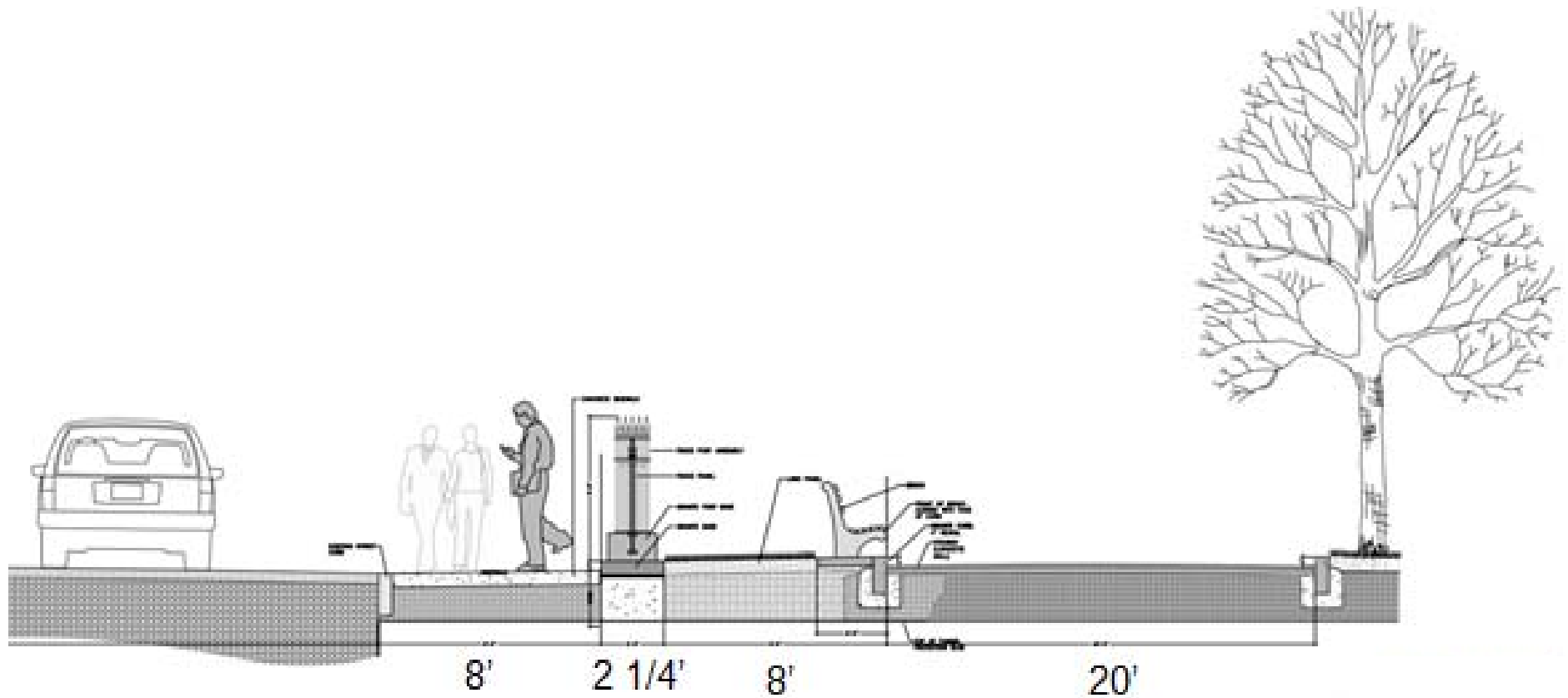
Boston Common

Parkman Plaza + Tremont Street Edge



Boston Common

Parkman Plaza + Tremont Street Edge

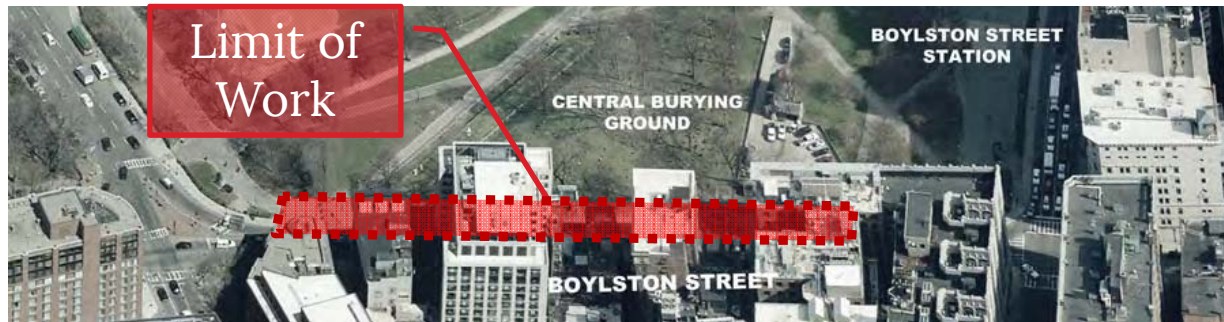


Tremont Street Edge Cross Section



Boston Common Boylston Street Sidewalk

Estimated Cost of Construction Improvements: \$465,000



DECEMBER 2016
*Project available
for bid*

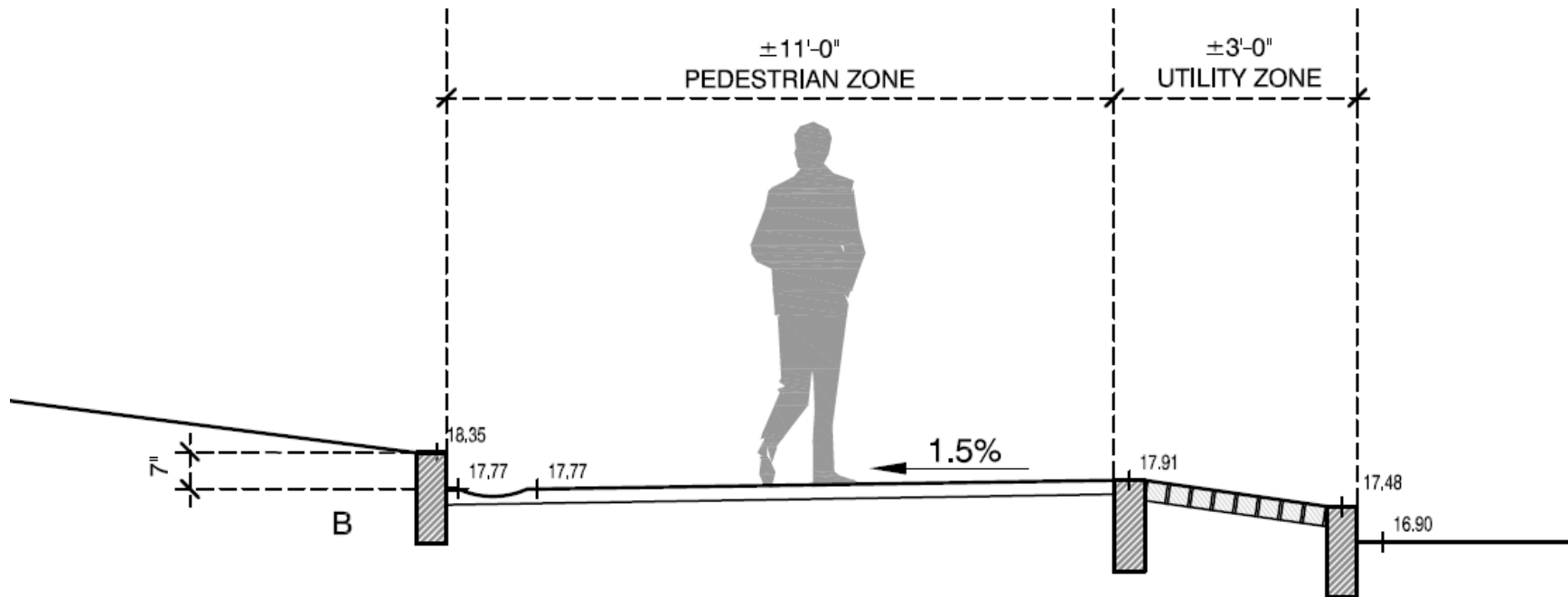
WINTER 2017
Construction Begins

JUNE 2017
*Construction
Substantially Complete
Construction completion
is partially dependent up
the severity of the winter
and how much work may
be accomplished in the
winter months
(February-April)*



Boston Common

Boylston Street Sidewalk



Proposed Boylston Street Cross Section



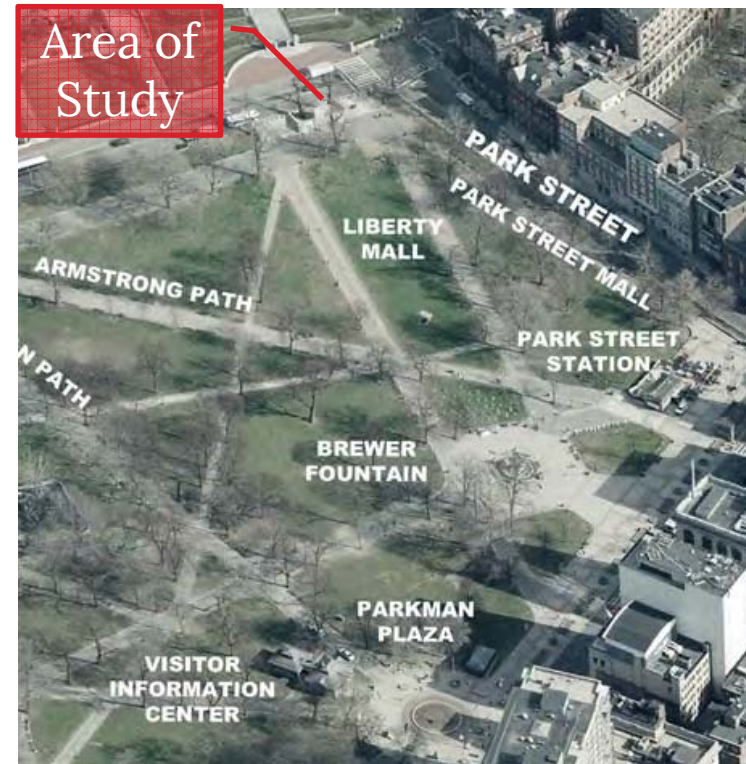
Boston Common

Shaw Memorial Accessibility Study

Estimated Cost of Construction Improvements: To Be Determined

OBJECTIVE: Study to explore options to improve accessible connections within Boston Common and Robert Gould Shaw and the 54th Regiment Memorial

- **October 2016**
Study Begins
- **Winter 2017**
Community input solicited regarding proposed ideas
- **Late Spring 2017**
Study Completed



Boston Common

Shaw Memorial Accessibility Study



Existing Conditions as viewed from Beacon Street



Boston Common

Frog Pond Master Plan Study

Estimated Cost of Construction Improvements: To Be Determined

OBJECTIVE: Study to determine the future redesign of the Frog Pond Ice Facility and the accompanying building. Project is managed by the City of Boston Public Facilities Department.



FALL 2016
Initial Planning

2017
Study Completed
Community input will be solicited as part of this project.



Boston Common: **Where should we focus our attention?**

Parks and Recreation is looking ahead to update the city-wide 5 Year City Capital Improvement Plan for parks. Where do you think investment should be made in Boston Common?





THANK YOU!

Margaret Dyson, Director of Historic Parks
margaret.dyson@boston.gov or 617-961-3028

Michele Folts, Project Manager, Design & Construction
michele.folts@boston.gov or 617-961-3025

Marchelle Jacques-Yarde, Outreach Coordinator, External Affairs
marchelle.jacques-yarde@boston.gov or 617-961-3006

