



BACK BAY FENS PATHWAYS DESIGN MEETING

Design Update



November 15, 2023
Boston Parks and Recreation



MEETING RECORDING



The Boston Parks and Recreation Department will be recording the meeting and posting to our project webpage for those who are unable to attend the Zoom meeting live.

It is possible that participants may also be recording the meeting with their phones cameras or other devices. If you do not wish to be recorded during this meeting, please keep your microphone muted and camera off.

Please share with your neighbors and friends,

WEB LINK:

boston.gov/fens-pathways

AGENDA

1 **PROJECT TEAM**

2 **PROJECT STATUS/RECAP**

3 **DESIGN UPDATE**

4 **CLOSING REMARKS & NEXT STEPS**

Improvements to
Back Bay Fens Pathways
Design Update Meeting

PROJECT TEAM

Lauren Bryant

Project Manager

lauren.bryant@boston.gov or 617-961-3019

Margaret Van Scoy

Office of Neighborhood Services:

margaret.vanscoy@boston.gov or 617-635-2679

Kyle Zick

Kyle Zick Landscape Architecture, Inc.

Jae Lee

Kyle Zick Landscape Architecture, Inc.

Rob Barella

Kyle Zick Landscape Architecture, Inc.

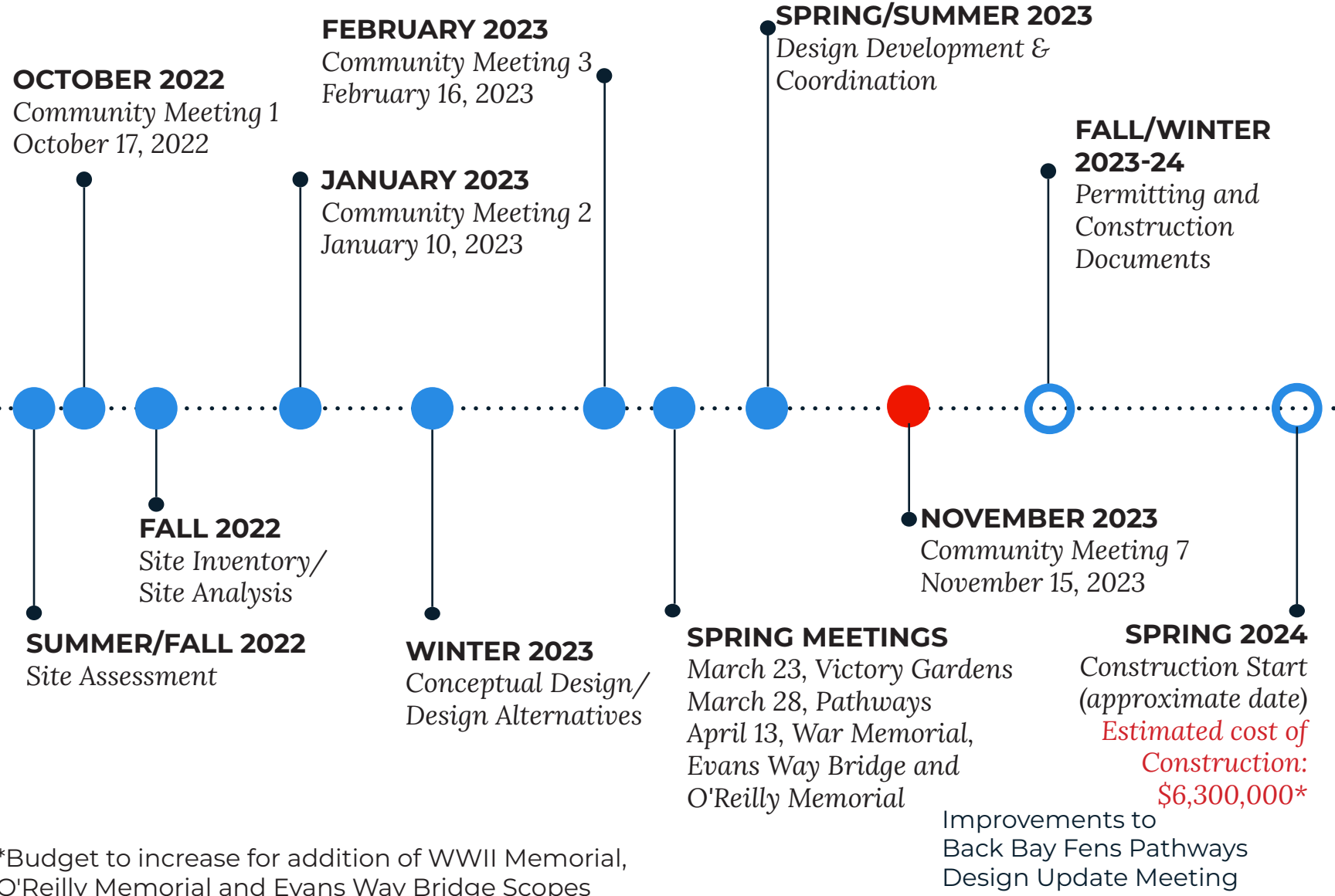
Mike Doucette

Kyle Zick Landscape Architecture, Inc.





PROJECT SCHEDULE & FUNDING



*Budget to increase for addition of WWII Memorial, O'Reilly Memorial and Evans Way Bridge Scopes

STAKEHOLDER OUTREACH

- **Emerald Necklace Conservancy**
- **Fenway Garden Society**
- **Fenway Civic Association**
- **Department of Conservation and Recreation**
- **Boston Transportation Department**
- **Boston Community Preservation**
- **Boston Arts Commission**
- **Boston Landmarks**
- **Boston Trust Office**
- **Army Corps of Engineers**
- **Boston Disabilities Commission**
- **Boston Conservation Commission**
- **Veterans Commission**

BACK BAY FENS PATHWAYS DESIGN SCOPE OF WORK

Review and amend pathways to improve:

- **Accessibility**
- **Desirability and uses**
- **Stormwater and runoff**
- **Materials**
- **Pathway longevity**

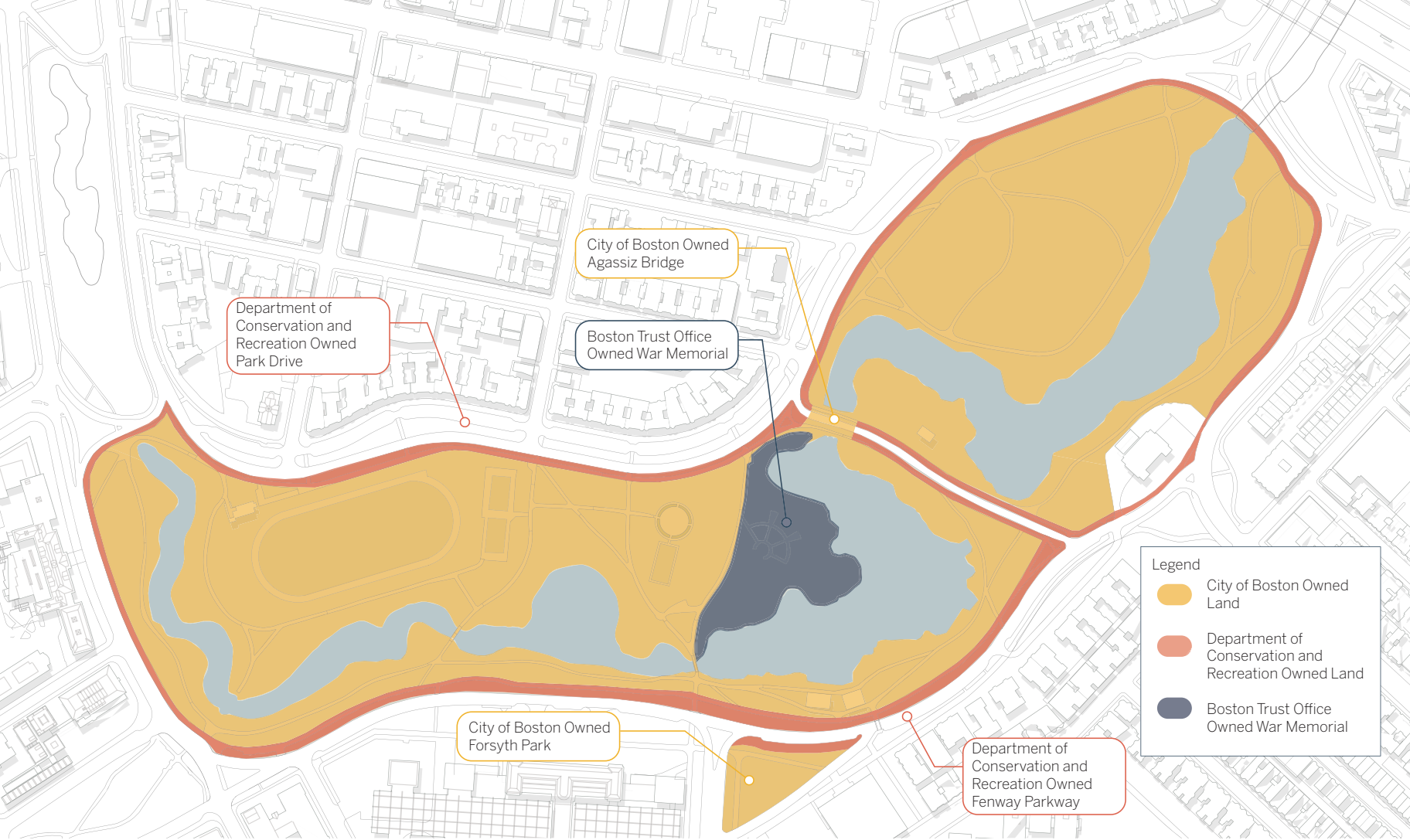


Legend

- | | | | |
|---|-------------------------|----|--------------------------------------------|
| 1 | Clemente Field | 10 | Fire Communication Building |
| 2 | Kelleher Rose Garden | 11 | Mothers Rest |
| 3 | Temple Bell | 12 | John Boyle O'Reilly Memorial |
| 4 | War Memorial | 13 | Park Drive |
| 5 | ENC Visitor Center | 14 | Fenway |
| 6 | Agassiz Road Duck House | 15 | Footbridge 1 |
| 7 | Agassiz Bridge | 16 | Footbridge 2 |
| 8 | Victory Gardens | 17 | Evans Way Bridge (Removed) |
| 9 | Robert Burns Statue | 18 | Monument of John Endecott/
Forsyth Park |



BACK BAY FENS - LOCUS PLAN



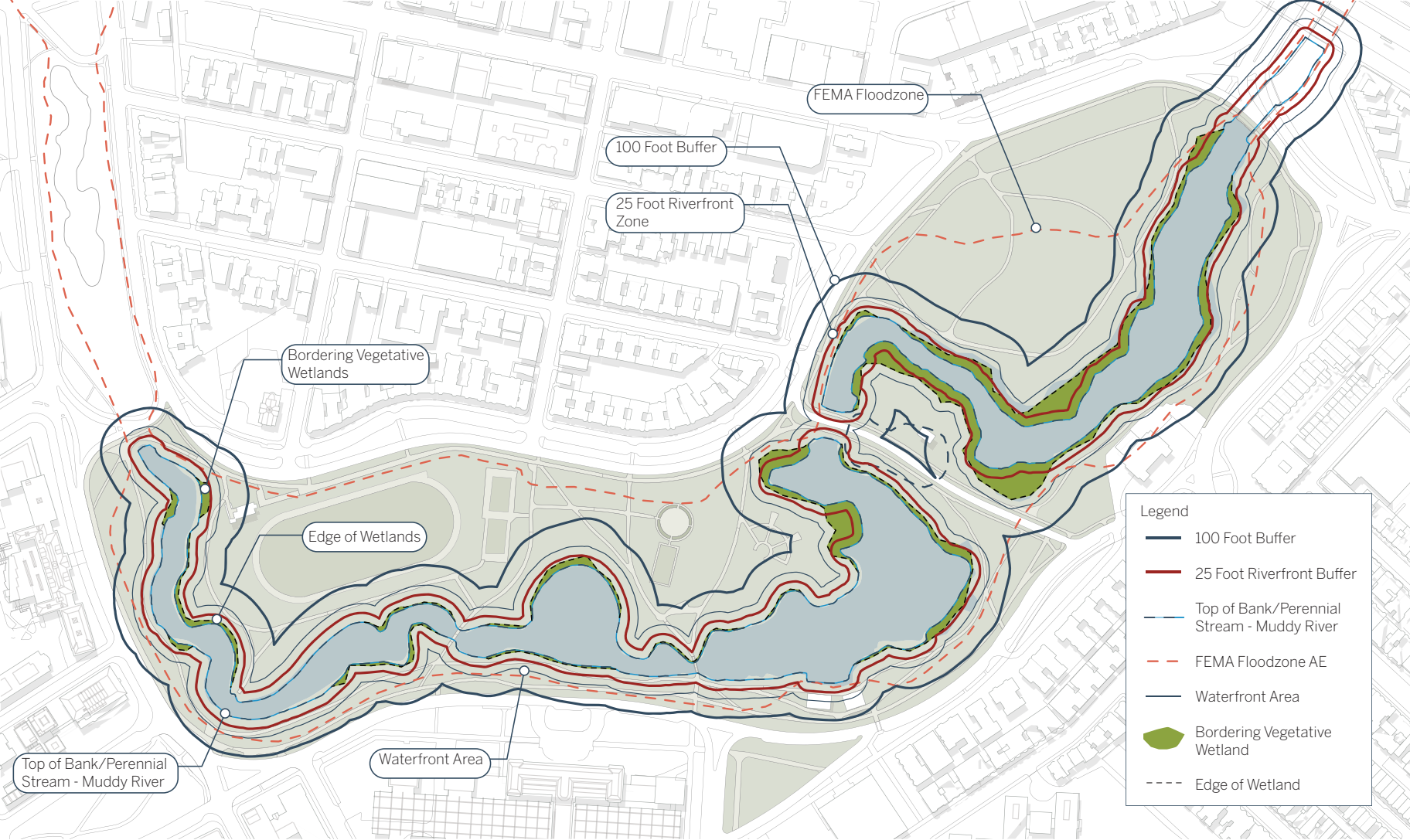
BACK BAY FENS - LAND OWNERSHIP

Improvements to
Back Bay Fens Pathways
Design Update Meeting



BACK BAY FENS - PATHWAY OWNERSHIP

Improvements to
Back Bay Fens Pathways
Design Update Meeting



BACK BAY FENS - WETLAND RESOURCES

Improvements to
Back Bay Fens Pathways
Design Update Meeting



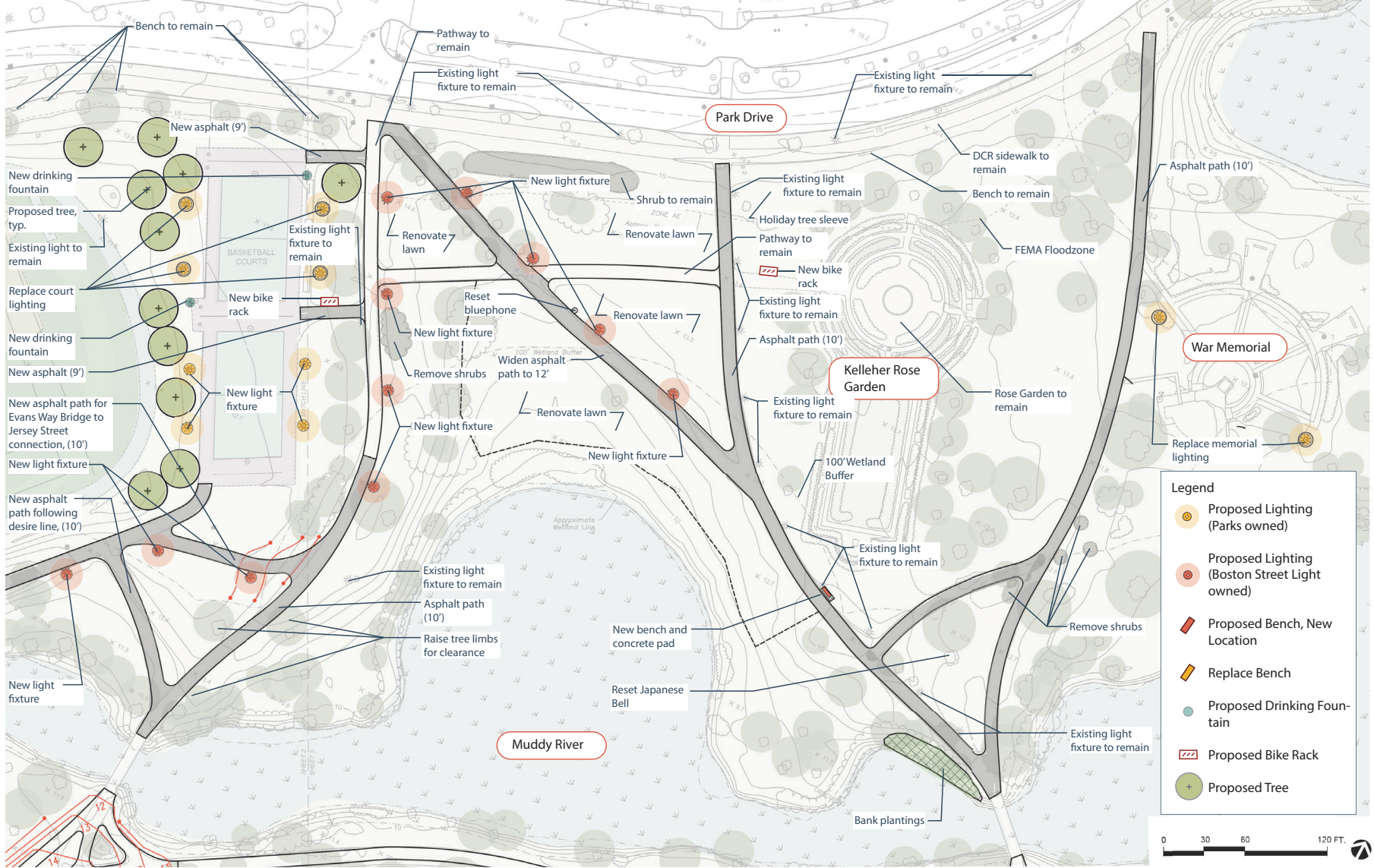
Legend

- Proposed Paved Pathway
- Reconstructed by ACOE
- DCR Pathway
- Pathway to Remain

PATHWAY SCOPE

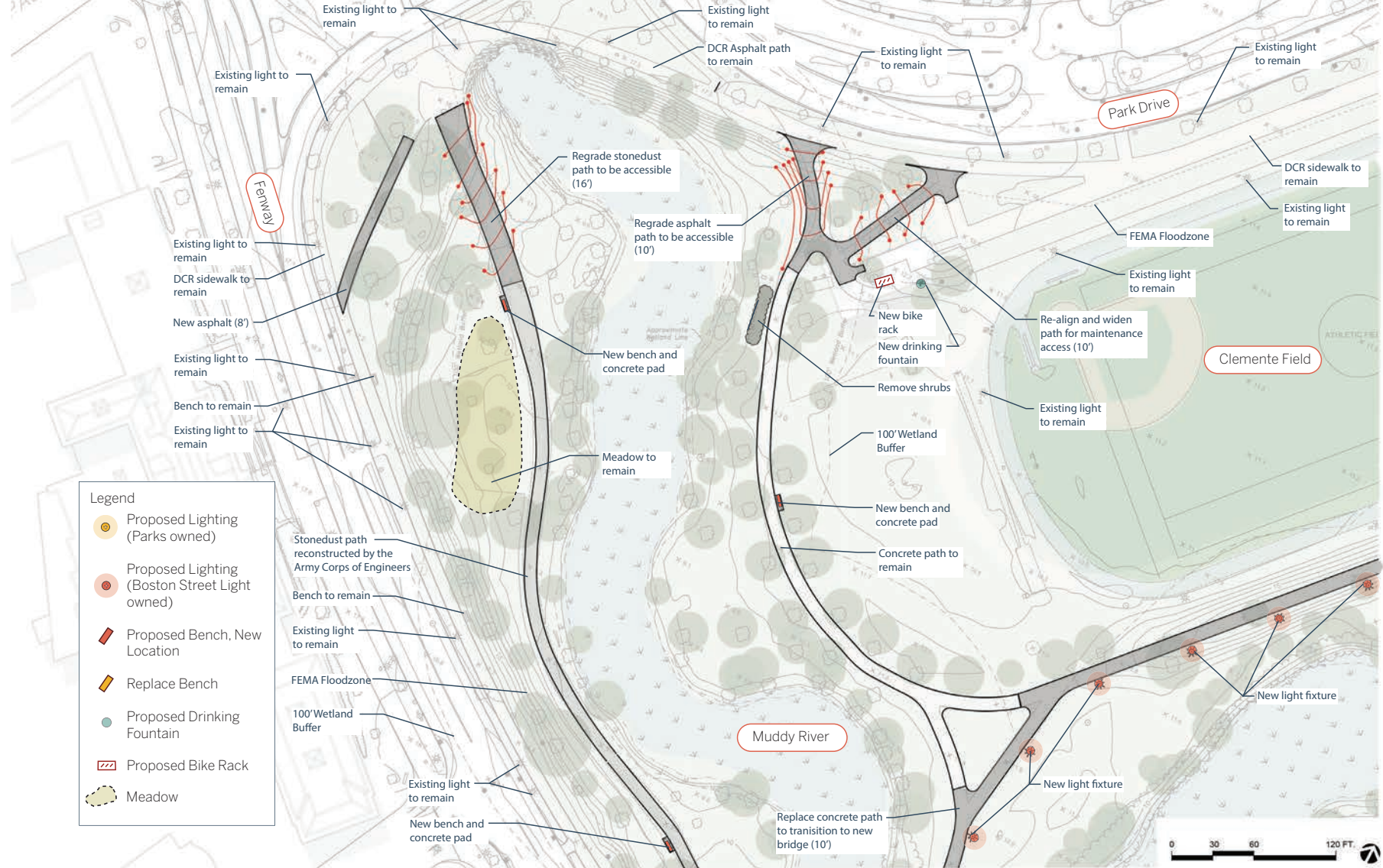


NEW PATHWAYS AND REPLACING EXISTING PATHWAYS



SCHEMATIC DESIGN-AREA 1

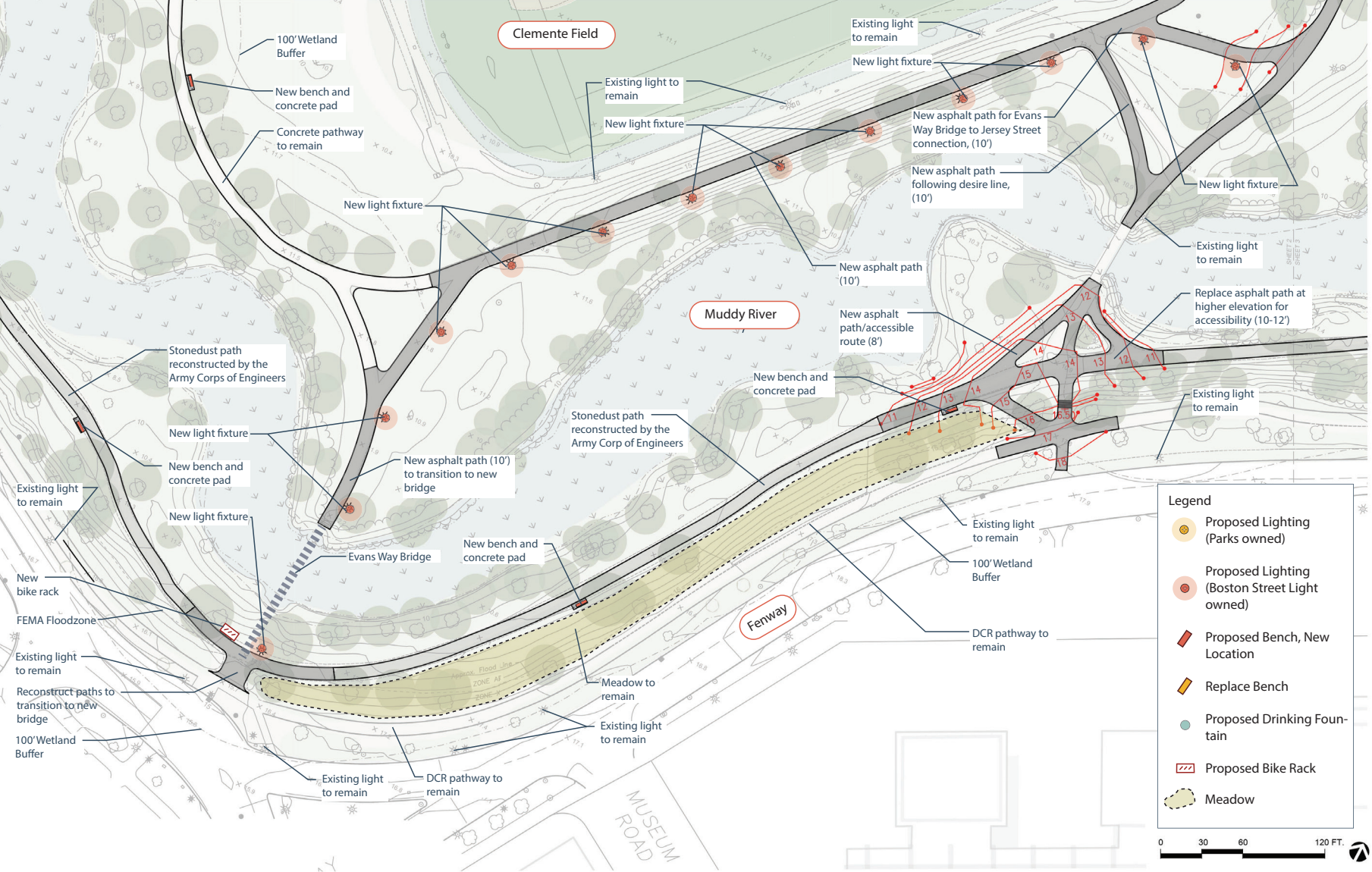




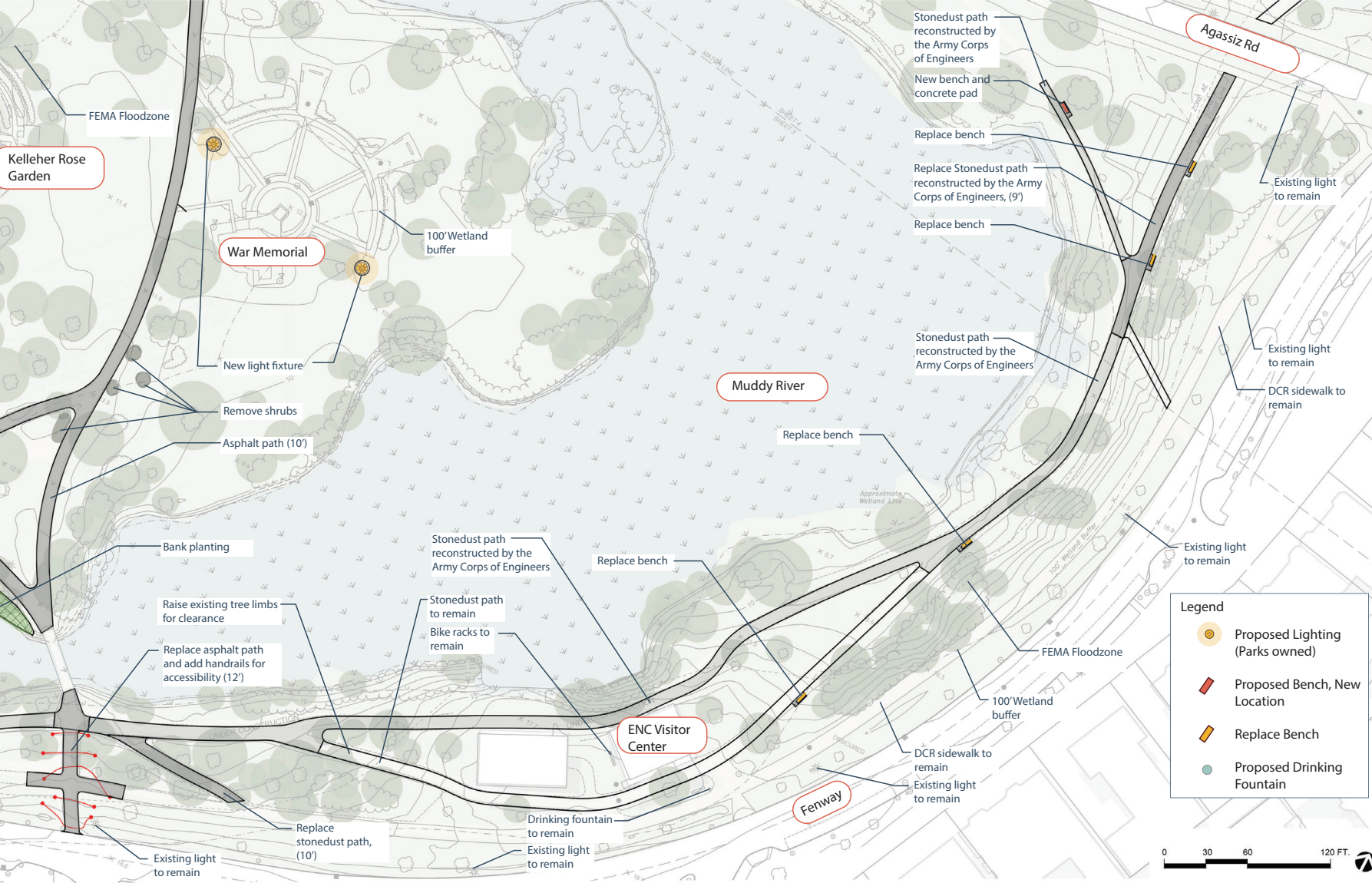
Legend

- Proposed Lighting (Parks owned)
- Proposed Lighting (Boston Street Light owned)
- ▢ Proposed Bench, New Location
- ▢ Replace Bench
- Proposed Drinking Fountain
- ▢ Proposed Bike Rack
- Meadow

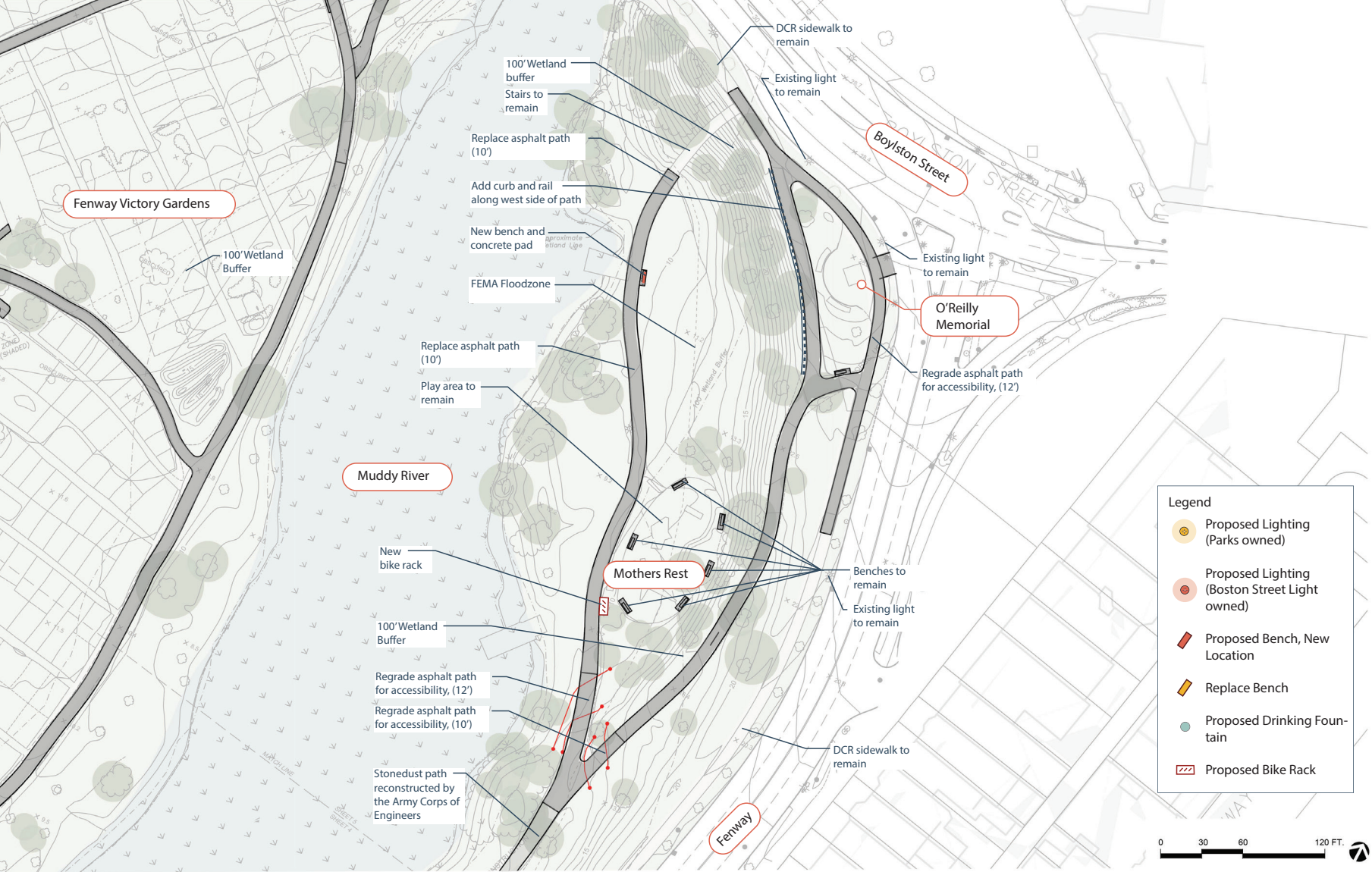
SCHEMATIC DESIGN-AREA 2



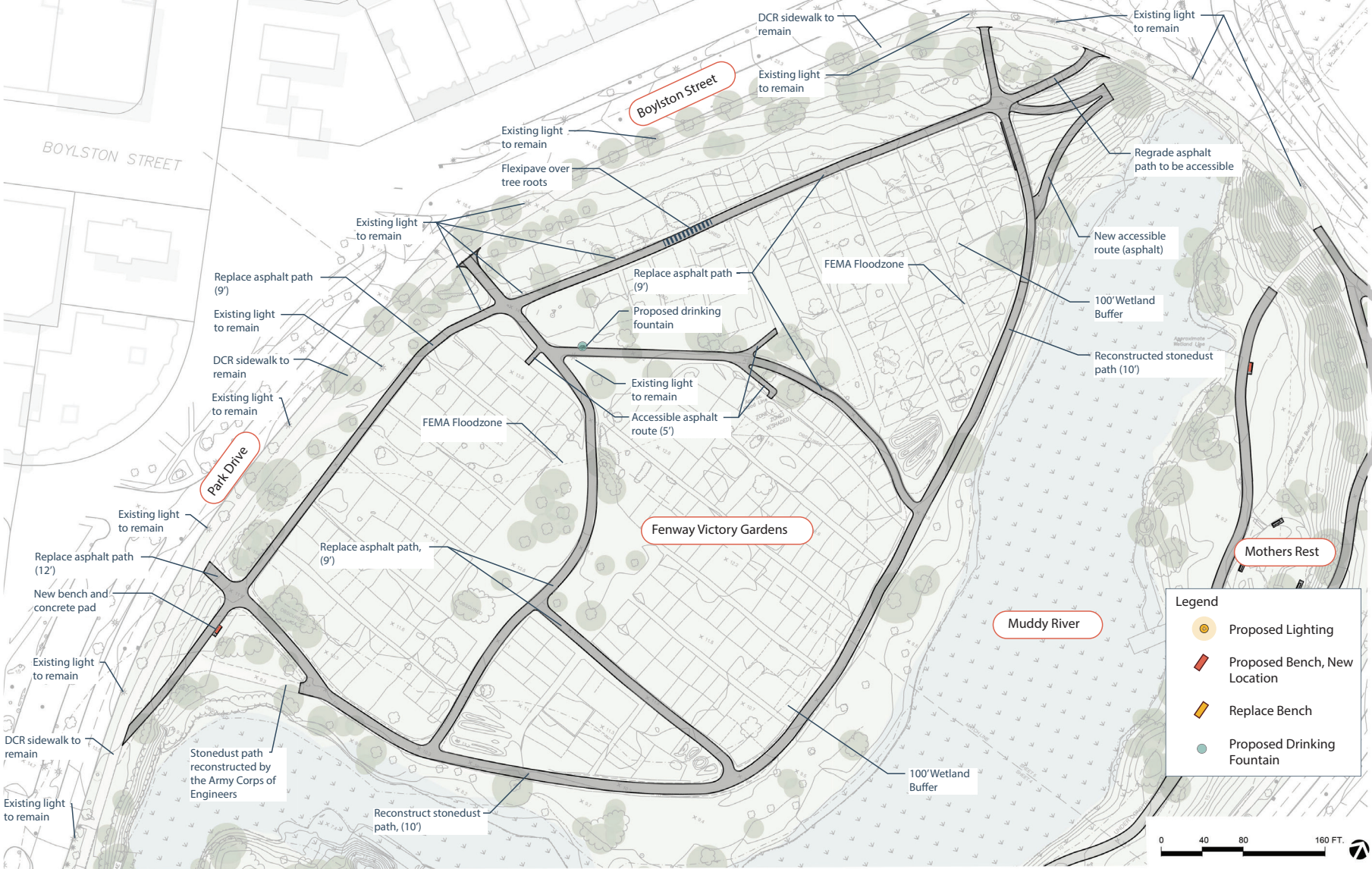
SCHEMATIC DESIGN-AREA 3



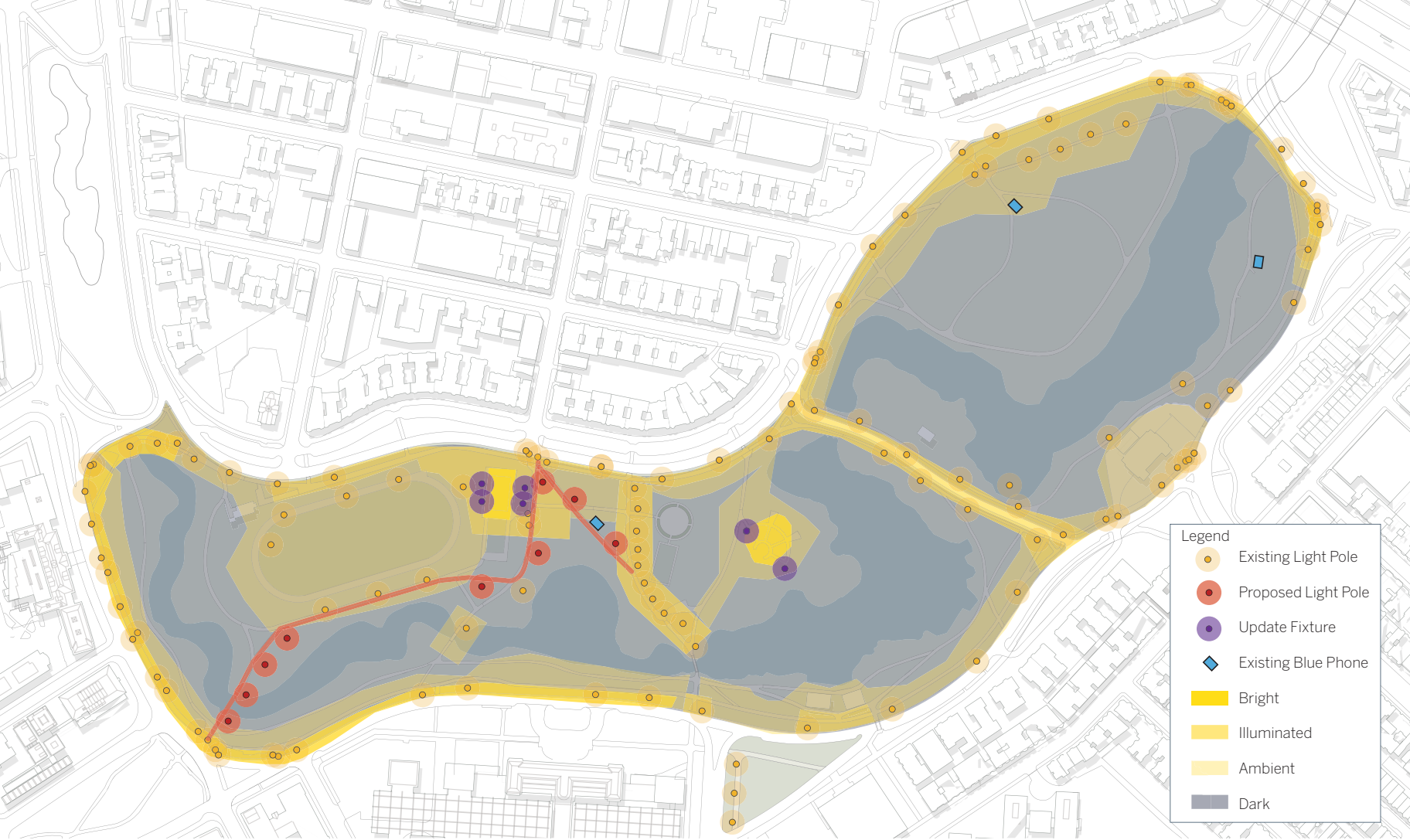
SCHEMATIC DESIGN-AREA 4



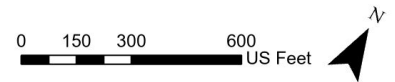
SCHEMATIC DESIGN-AREA 5



SCHEMATIC DESIGN-AREA 6



STUDY PLANS - LIGHTING



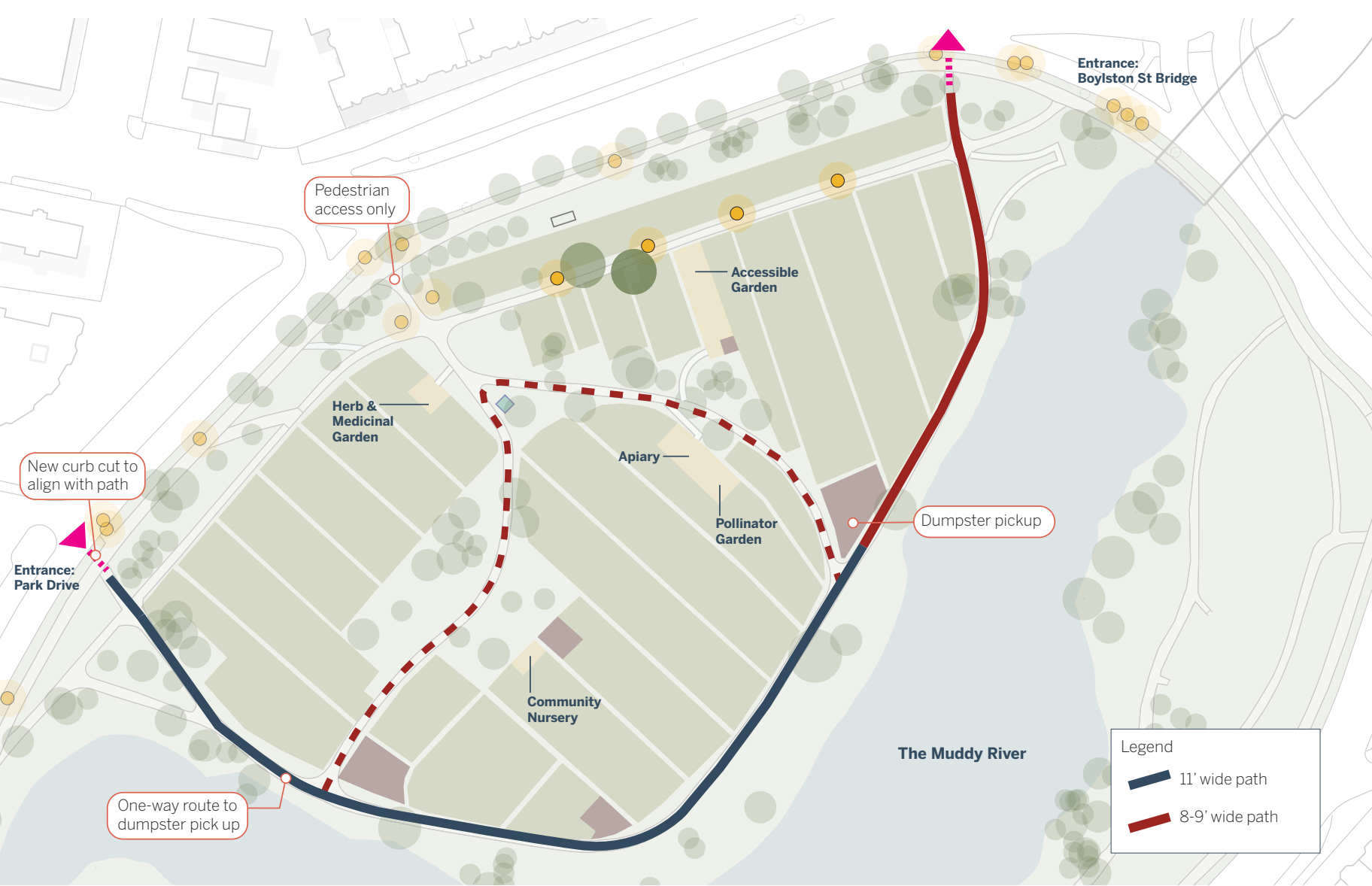
TREE INVENTORY



VICTORY GARDEN IMPROVEMENTS PLAN



VICTORY GARDEN PROPOSED PATHWAY WIDTHS



VICTORY GARDEN PROPOSED VEHICULAR ACCESS



**VICTORY GARDEN
FLAGPOLE LAWN - EXISTING**



Drinking fountain

See entrance options

New concrete

Relocated memorial stone

Pave social trail

New path connection

Bulletin board

Extend wood chip path

Open lawn

Shift flagpole

Backed bench

Widen radius for blue light

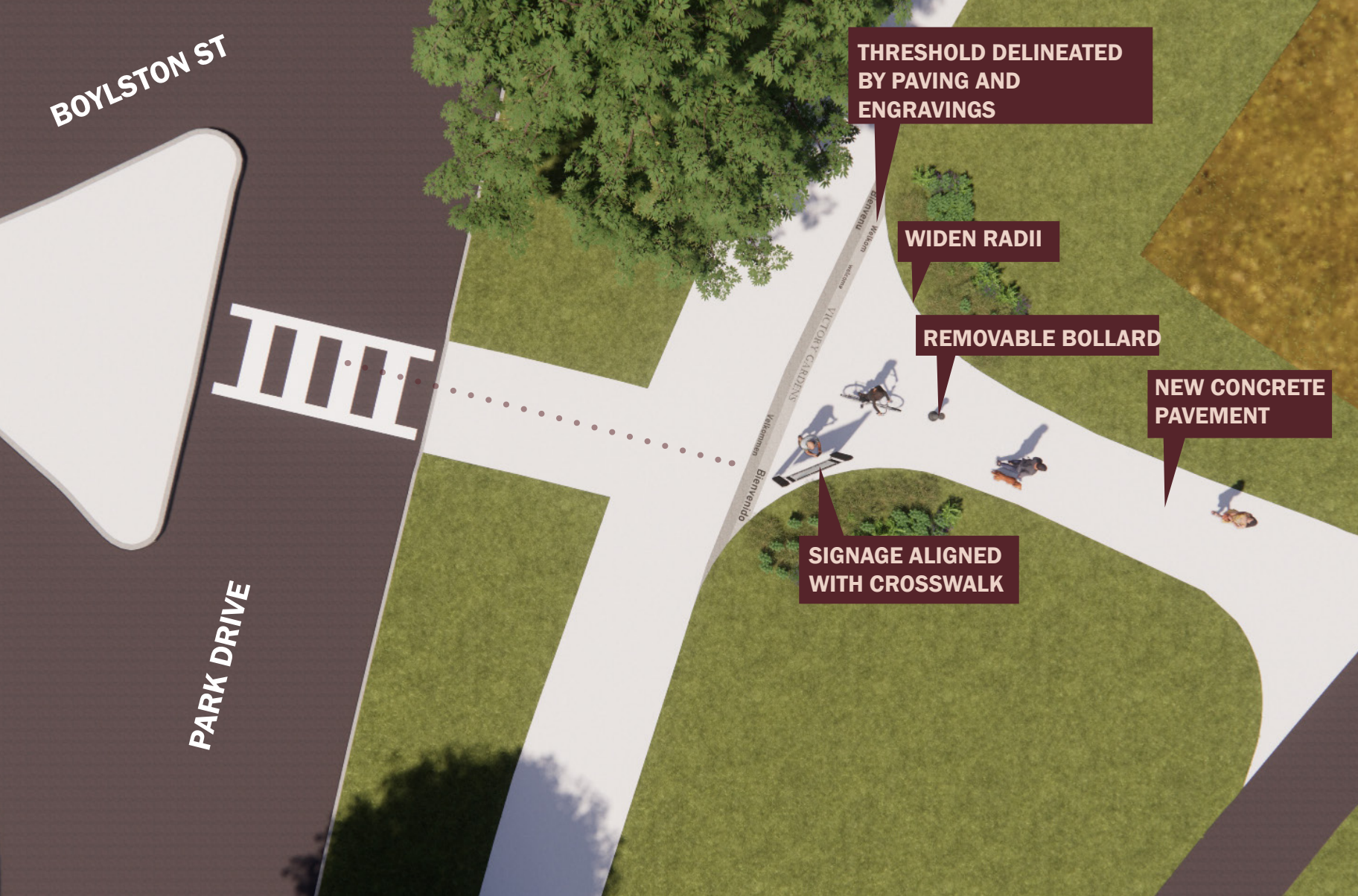
Backed bench

VICTORY GARDEN FLAGPOLE LAWN - PROPOSED



**WORN SHOULDERS
FROM VEHICLES**

**VICTORY GARDEN
BOYLSTON ENTRANCE - EXISTING**



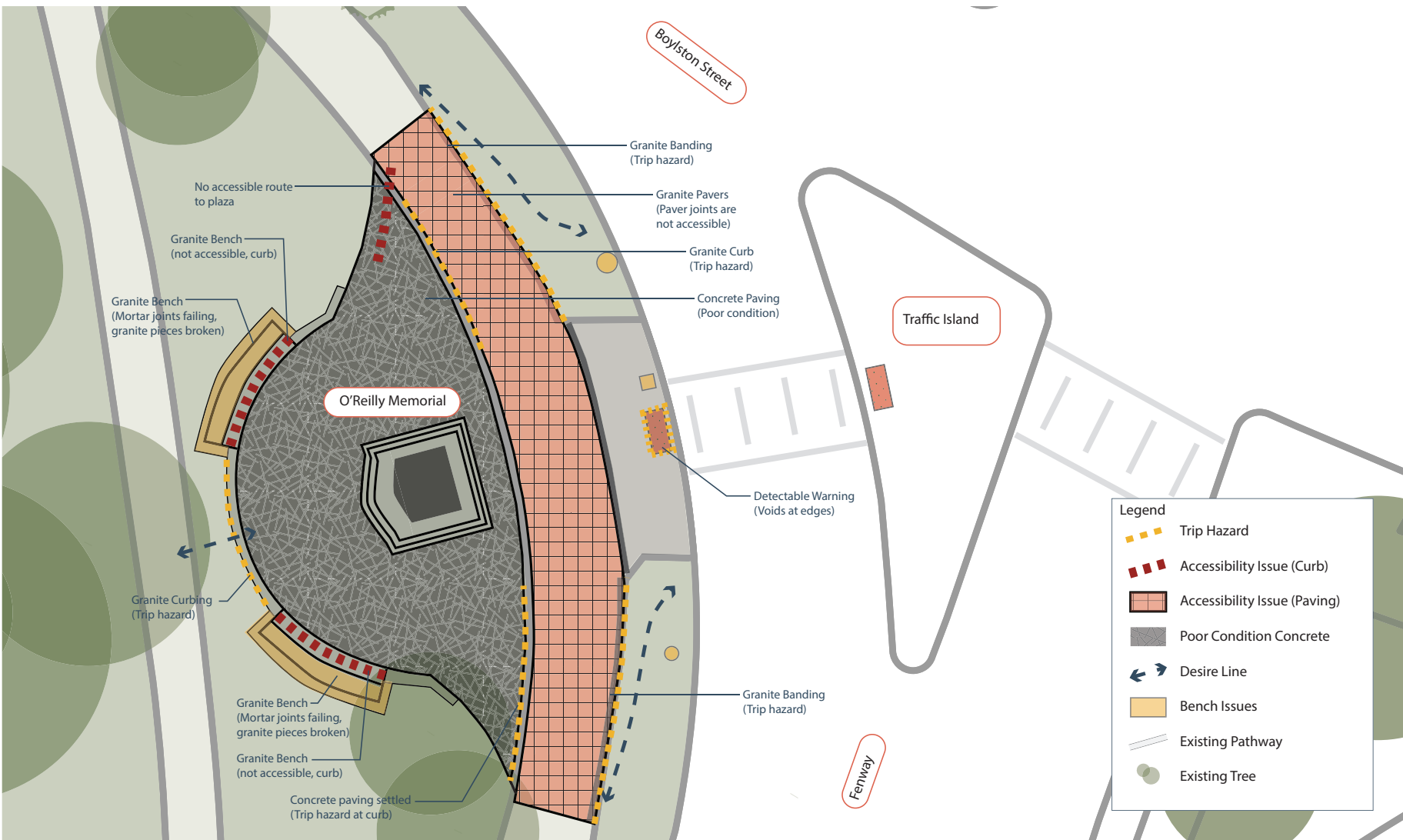
**VICTORY GARDEN
BOYLSTON ENTRANCE**



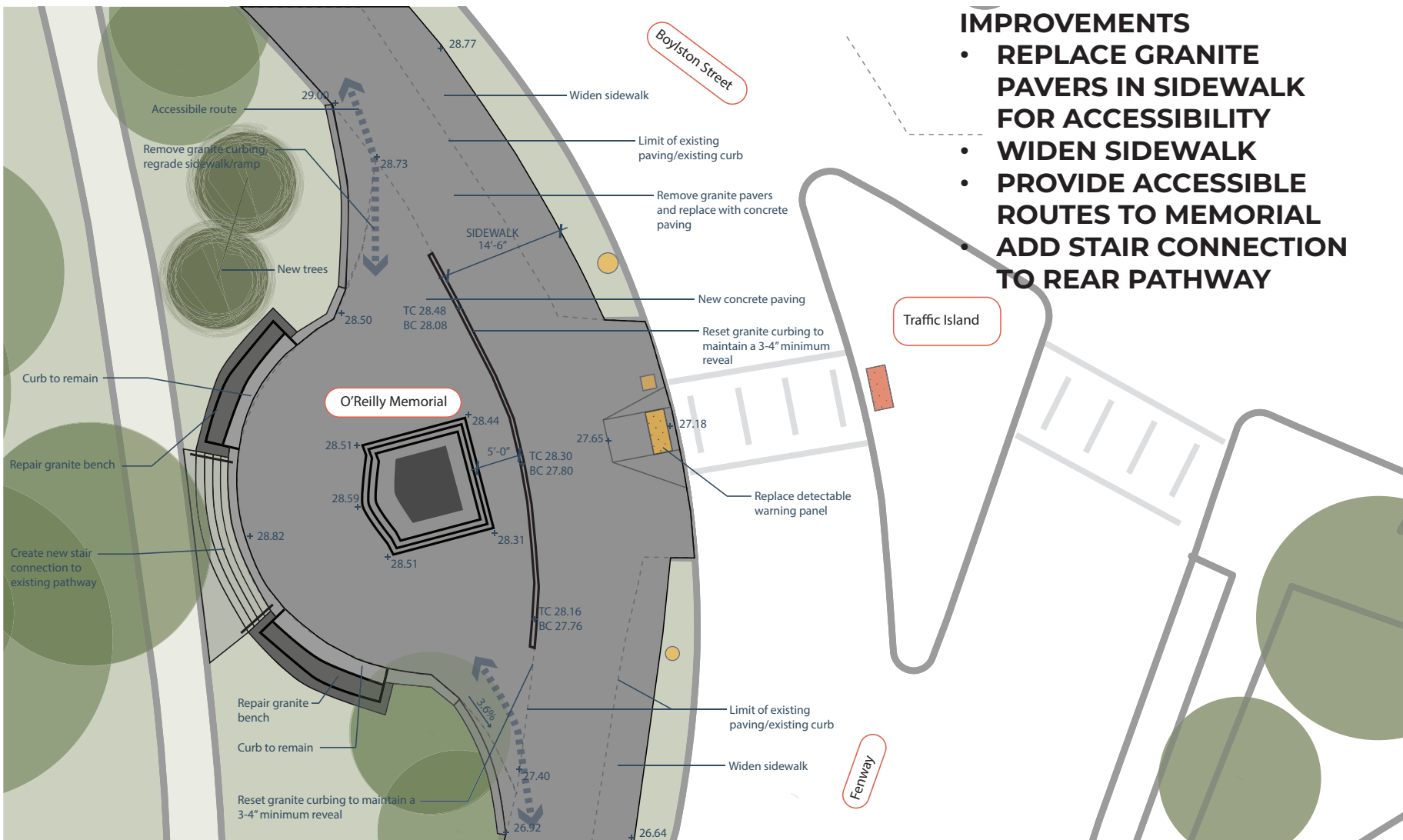
VICTORY GARDEN BOYLSTON ENTRANCE



O'REILLY MEMORIAL - Existing Conditions



O'REILLY MEMORIAL - Existing Conditions



IMPROVEMENTS

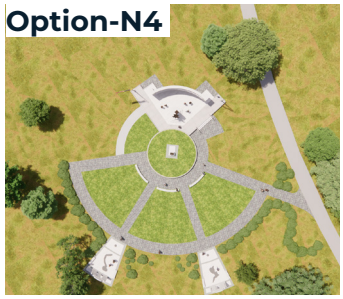
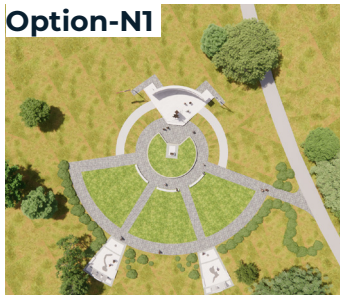
- REPLACE GRANITE PAVERS IN SIDEWALK FOR ACCESSIBILITY
- WIDEN SIDEWALK
- PROVIDE ACCESSIBLE ROUTES TO MEMORIAL
- ADD STAIR CONNECTION TO REAR PATHWAY

O'REILLY MEMORIAL



BACK BAY FENS - Existing Conditions War Memorial

Improvements to
Back Bay Fens Pathways
Design Update Meeting



- option 1, 2, 3, 4, 6 and 7 have separate paths for the 2 levels
- options 5, 8 and 9 have connection between the 2 levels
- option N1-5 all regrade to remove 1 or 2 levels

BACK BAY FENS - War Memorial

Accessibility Options

Improvements to Back Bay Fens Pathways Design Update Meeting



WAR MEMORIAL-OPTION 2

Improvements to
Back Bay Fens Pathways
Design Update Meeting



WAR MEMORIAL-OPTION 2

Improvements to
Back Bay Fens Pathways
Design Update Meeting



WAR MEMORIAL-OPTION N2R REV

Improvements to
Back Bay Fens Pathways
Design Update Meeting



WAR MEMORIAL-OPTION N2R REV

Improvements to
Back Bay Fens Pathways
Design Update Meeting



WAR MEMORIAL-OPTION 3NR

Improvements to
Back Bay Fens Pathways
Design Update Meeting

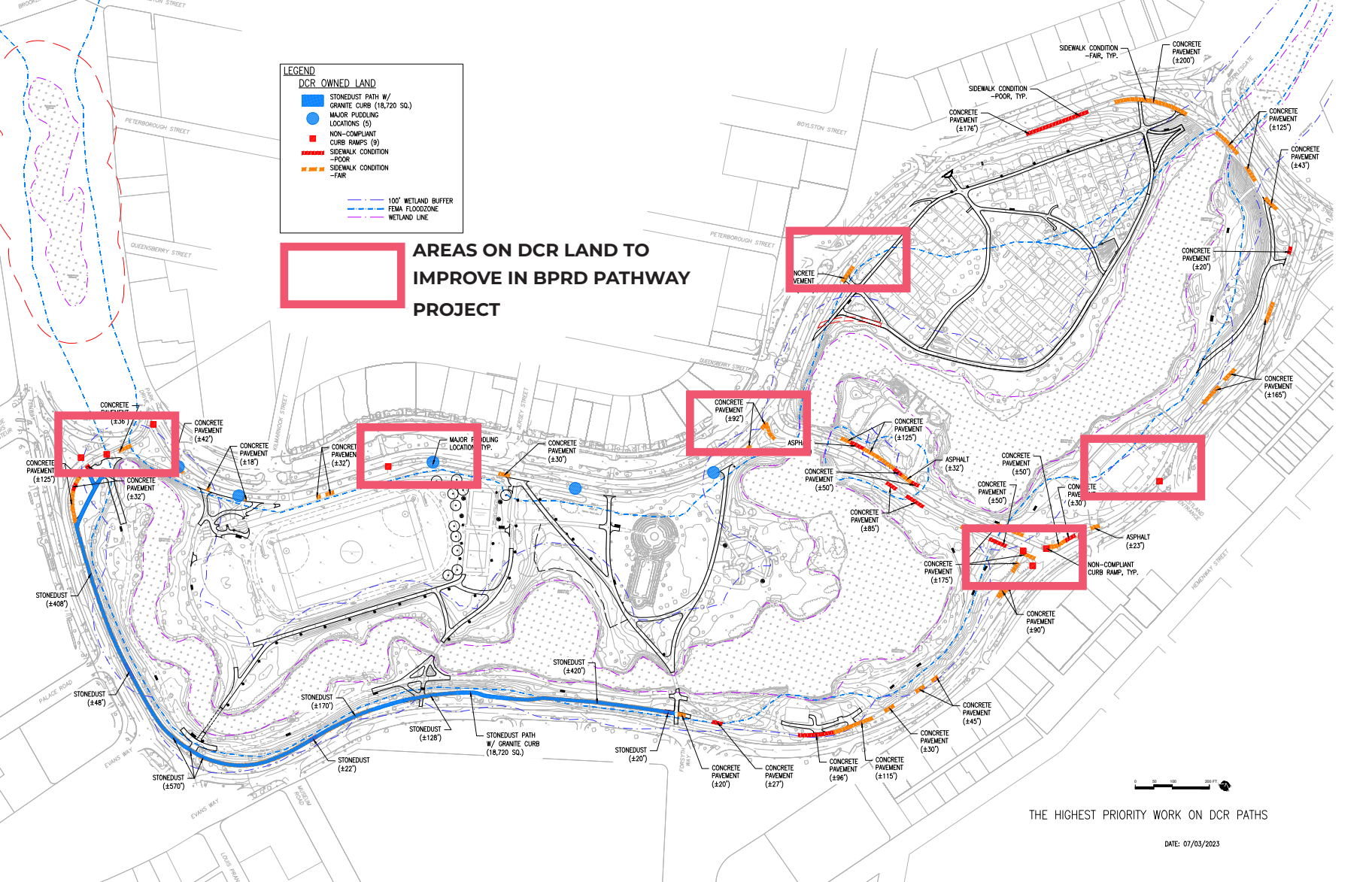


WAR MEMORIAL-OPTION 3NR

Improvements to
Back Bay Fens Pathways
Design Update Meeting



BACK BAY FENS - PATHWAY OWNERSHIP



LEGEND

DCR OWNED LAND

- STONE DUST PATH W/ GRANITE CURB (18,720 SQ.)
- MAJOR PUDDLING LOCATIONS (5)
- NON-COMPLIANT CURB RAMPS (9)
- SIDEWALK CONDITION -POOR
- SIDEWALK CONDITION -FAIR
- 100' WETLAND BUFFER
- FEMA FLOODZONE
- WETLAND LINE

AREAS ON DCR LAND TO IMPROVE IN BPRD PATHWAY PROJECT

THE HIGHEST PRIORITY WORK ON DCR PATHS

DATE: 07/03/2023

HIGH PRIORITY PATHWAY SCOPE ON DCR LAND



DCR Pathway

Existing path to remain

Proposed paved pathway

Reconstructed by Army Corps of Engineers

Legend

- Proposed Paved Pathway
- Reconstructed by ACOE
- DCR Pathway
- Pathway to Remain

PATHWAY SCOPE

NEXT STEPS

● **ADVANCE DESIGN AND DOCUMENTATION**

● **PERMITTING/APPROVALS**

● **EVANS WAY BRIDGE DESIGN**

● **VISIT PROJECT WEBSITE**

WEB LINK:

boston.gov/fens-pathways

Scan me with your
phone's camera!



Improvements to
Back Bay Fens Pathways
Design Update Meeting



THANK YOU!

See the project website for future updates.

BOS:
311

For questions, maintenance requests or concerns regarding any of our parks contact 311

B

November 15, 2023
Boston Parks and Recreation

