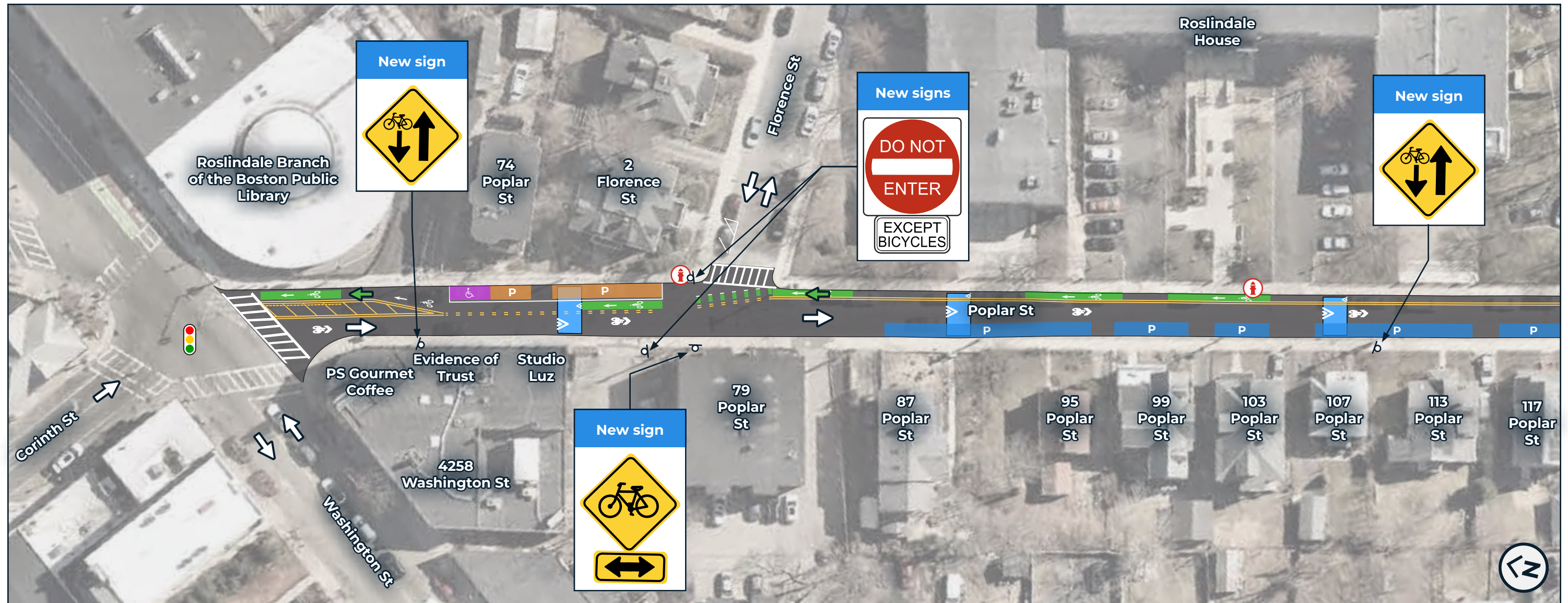


A safer, slower, more bikable Poplar Street

Updated design plans for pavement markings and speed humps






ABOUT THIS DOCUMENT

This is an illustration of our design plans for Poplar Street between Washington Street and Canterbury Street. It is for informational and discussion purposes only; it is not drawn to scale and is not meant for construction.

We are still working with you to fine-tune the details of this design. For more information, visit boston.gov/poplar-street. Share your feedback via email: better-bike-lanes@boston.gov.

PARKING: WASHINGTON TO FLORENCE

These numbers are preliminary and subject to change. One space equals 20' of curb length. Stopping is not allowed outside of color-shaded areas.

| Color | Regulation | Existing | Planned |
|---|---|----------|---------|
|  | Unrestricted | 6 | 0 |
|  | Accessible (HP-V) | 1 | 1 |
|  | 15-minute parking 8a - 6p ex. Sun Unrestricted 6p - 8a | 0 | 4 |
| | Total | 7 | 5 |

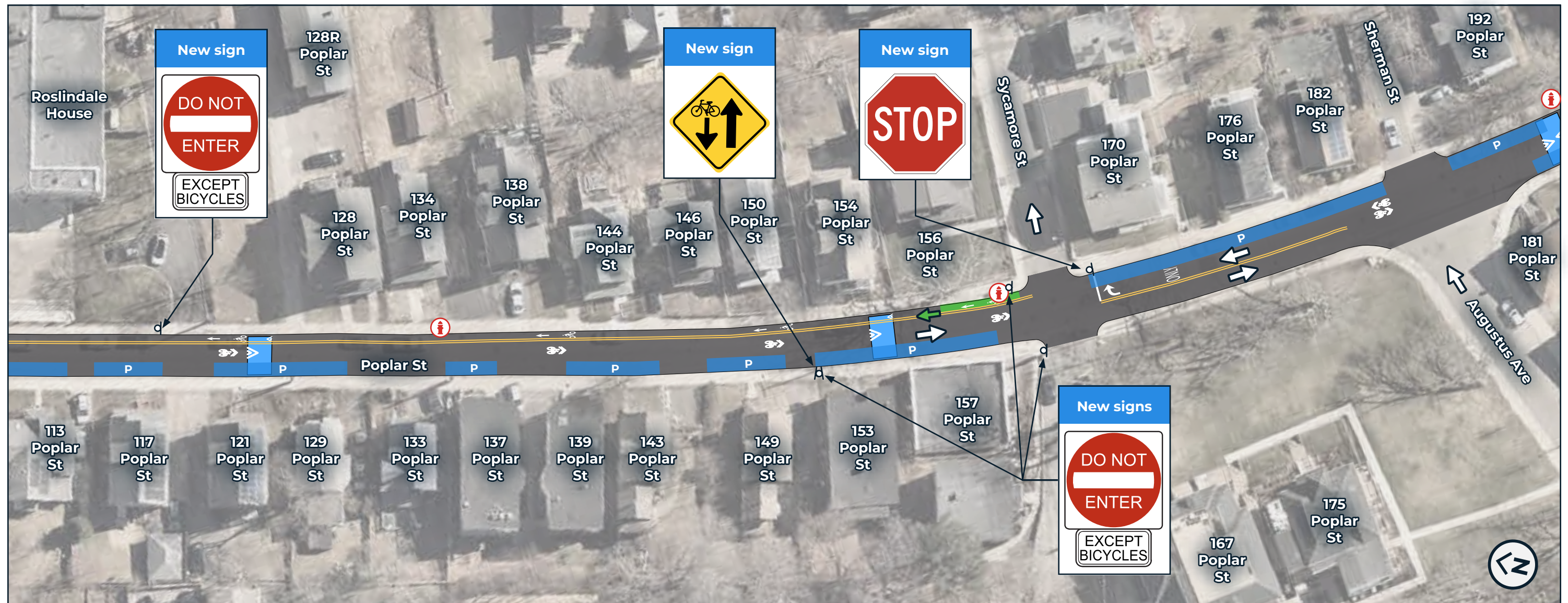
LEGEND

-  Proposed speed hump*
-  Existing signaled intersection
-  Direction of travel: all vehicles
-  Fire hydrant
-  Direction of travel: bicycles only

* We're still working to determine the best locations for speed humps on Poplar Street. The locations shown on this illustration are subject to change. We'll work with emergency responders to ensure the speed hump locations preserve their response times.

A safer, slower, more bikable Poplar Street

Updated design plans for pavement markings and speed humps



ABOUT THIS DOCUMENT

This is an illustration of our design plans for Poplar Street between Washington Street and Canterbury Street. It is for informational and discussion purposes only; it is not drawn to scale and is not meant for construction.




We are still working with you to fine-tune the details of this design. For more information, visit boston.gov/poplar-street. Share your feedback via email: better-bike-lanes@boston.gov.

PARKING: FLORENCE TO SYCAMORE

These numbers are preliminary and subject to change. One space equals 20' of curb length. Stopping is not allowed outside of color-shaded areas.

| Color | Regulation | Existing | Planned |
|---|--------------|----------|---------|
| P | Unrestricted | 29 | 25 |
| | Total | 29 | 25 |

LEGEND

- Proposed speed hump*
-  Fire hydrant
-  Direction of travel: all vehicles
-  Direction of travel: bicycles only

* We're still working to determine the best locations for speed humps on Poplar Street. The locations shown on this illustration are subject to change. We'll work with emergency responders to ensure the speed hump locations preserve their response times.

A safer, slower, more bikable Poplar Street

Updated design plans for pavement markings and speed humps





ABOUT THIS DOCUMENT

This is an illustration of our design plans for Poplar Street between Washington Street and Canterbury Street. It is for informational and discussion purposes only; it is not drawn to scale and is not meant for construction.




We are still working with you to fine-tune the details of this design. For more information, visit boston.gov/poplar-street. Share your feedback via email: better-bike-lanes@boston.gov.

PARKING

No changes are currently proposed to parking in the area shown above.

| Color | Regulation |
|---|-------------------|
|  | Unrestricted |
|  | Accessible (HP-V) |

LEGEND

-  Proposed speed hump*
-  Fire hydrant
-  Direction of travel: all vehicles

* We're still working to determine the best locations for speed humps on Poplar Street. The locations shown on this illustration are subject to change. We'll work with emergency responders to ensure the speed hump locations preserve their response times.

A safer, slower, more bikable Poplar Street

Updated design plans for pavement markings and speed humps



ABOUT THIS DOCUMENT

This is an illustration of our design plans for Poplar Street between Washington Street and Canterbury Street. It is for informational and discussion purposes only; it is not drawn to scale and is not meant for construction.




We are still working with you to fine-tune the details of this design. For more information, visit boston.gov/poplar-street. Share your feedback via email: better-bike-lanes@boston.gov.

PARKING

No changes are currently proposed to parking in the area shown above.

| Color | Regulation |
|---|--------------|
|  | Unrestricted |

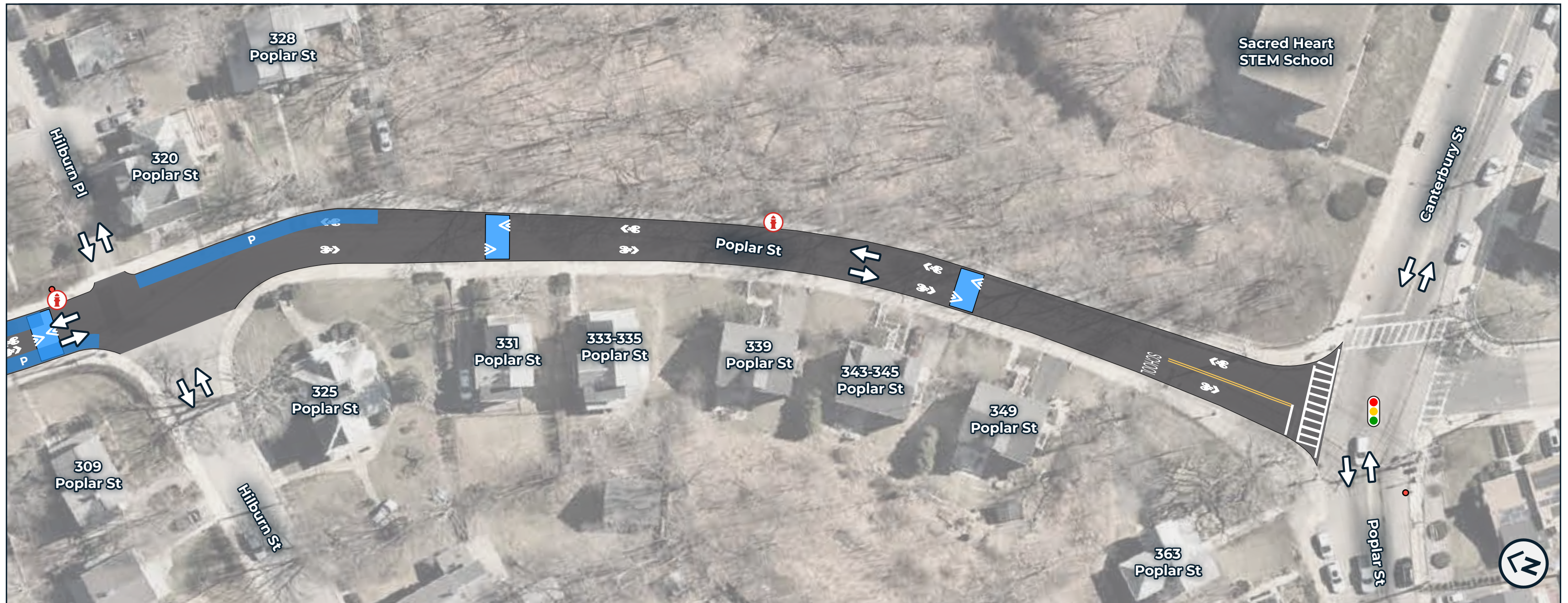
LEGEND

-  Proposed speed hump*
-  Fire hydrant
-  Direction of travel: all vehicles

* We're still working to determine the best locations for speed humps on Poplar Street. The locations shown on this illustration are subject to change. We'll work with emergency responders to ensure the speed hump locations preserve their response times.

A safer, slower, more bikable Poplar Street

Updated design plans for pavement markings and speed humps



ABOUT THIS DOCUMENT

This is an illustration of our design plans for Poplar Street between Washington Street and Canterbury Street. It is for informational and discussion purposes only; it is not drawn to scale and is not meant for construction.

We are still working with you to fine-tune the details of this design. For more information, visit boston.gov/poplar-street. Share your feedback via email: better-bike-lanes@boston.gov.

PARKING

No changes are currently proposed to parking in the area shown above.

| Color | Regulation |
|---|--------------|
|  | Unrestricted |

LEGEND

-  Proposed speed hump*
-  Existing signalized intersection
-  Direction of travel: all vehicles
-  Fire hydrant

* We're still working to determine the best locations for speed humps on Poplar Street. The locations shown on this illustration are subject to change. We'll work with emergency responders to ensure the speed hump locations preserve their response times.