

Non-Illuminated Blade Sign  
 30" Dia. x 2"  
 Carved HDU Sign Foam  
 (More Durable Alternative to Wood)

Qty. (1)

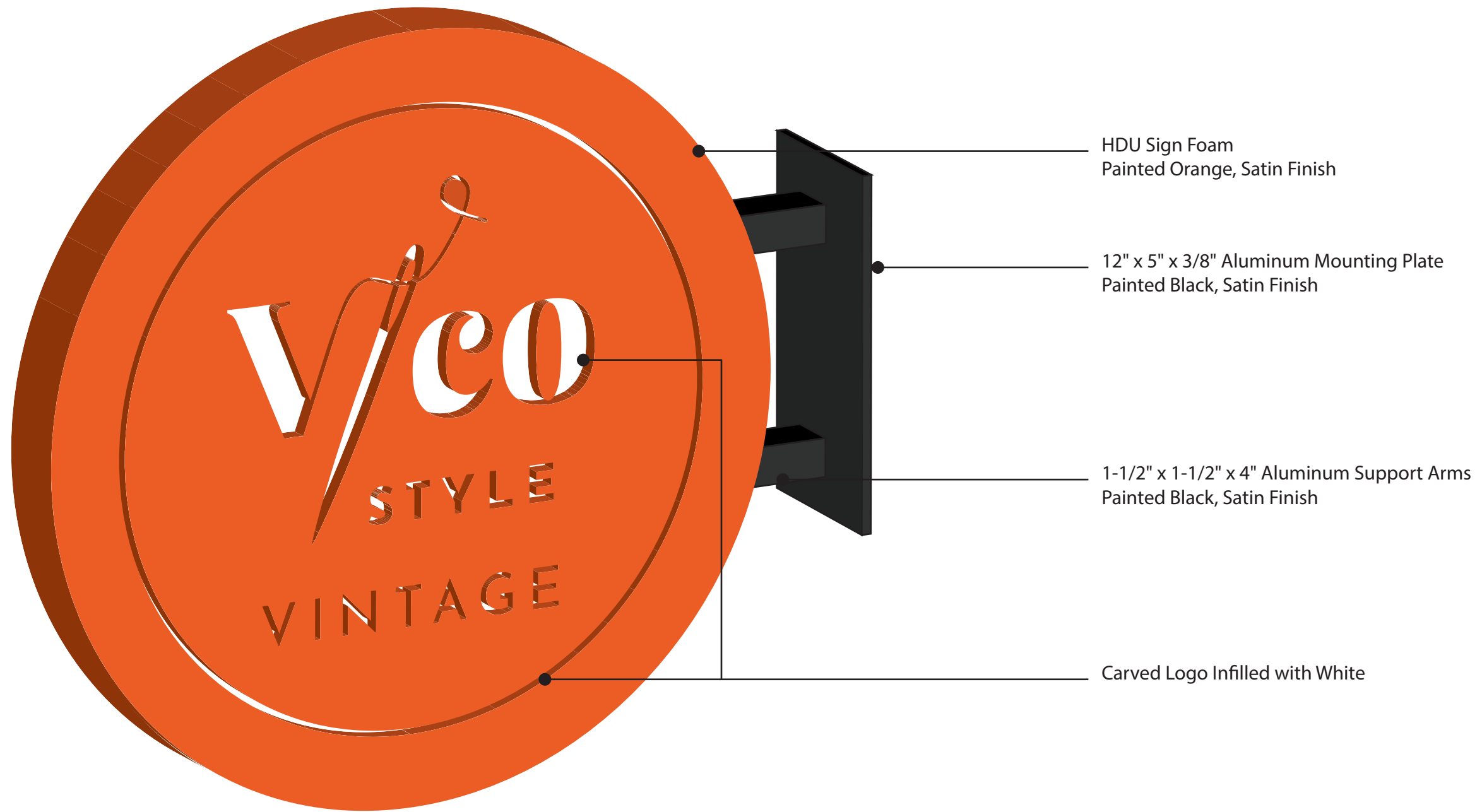


- White
- Black
- Orange (Exact Color TBD)

<b>SRPSIGN</b> CORPORATION 236 PEARL STREET SOMERVILLE, MA 02145 (617) 623-6222	PROJECT: <b>BLADE SIGN</b>	PROPRIETARY NOTICE: THIS DRAWING SHEET AND CONTENTS HEREIN ARE THE PROPERTY OF SRP SIGN CORPORATION. USE OF THIS DRAWING'S CONTENTS OR DESIGN CONCEPTS FOR PURPOSES OTHER THAN ESTIMATING, DRAWING PREPARATION, AND/OR MANUFACTURING FOR SRP SIGN CORPORATION SHALL BE CAUSE FOR LEGAL RECOURSE BY SRP SIGN CORPORATION	 <b>1</b>
	ADDRESS: 125 CHARLES ST., BOSTON, MA 02122		
	CLIENT: VICO STYLE		
	DRAWN BY: ADAM KNAUER      DATE: 5-16-2023		
DESCRIPTION: EXTERIOR SIGNAGE	FILE LOCATION: Clients\Vico Style\Beacon Hill\Blade Sign\VicoStyle_BeaconHill_Blade_v2.pdf		

Non-Illuminated Blade Sign  
 30" Dia. x 2"  
 Carved HDU Sign Foam  
 (More Durable Alternative to Wood)

Qty. (1)



HDU Sign Foam  
 Painted Orange, Satin Finish

12" x 5" x 3/8" Aluminum Mounting Plate  
 Painted Black, Satin Finish

1-1/2" x 1-1/2" x 4" Aluminum Support Arms  
 Painted Black, Satin Finish

Carved Logo Infilled with White



White



Black

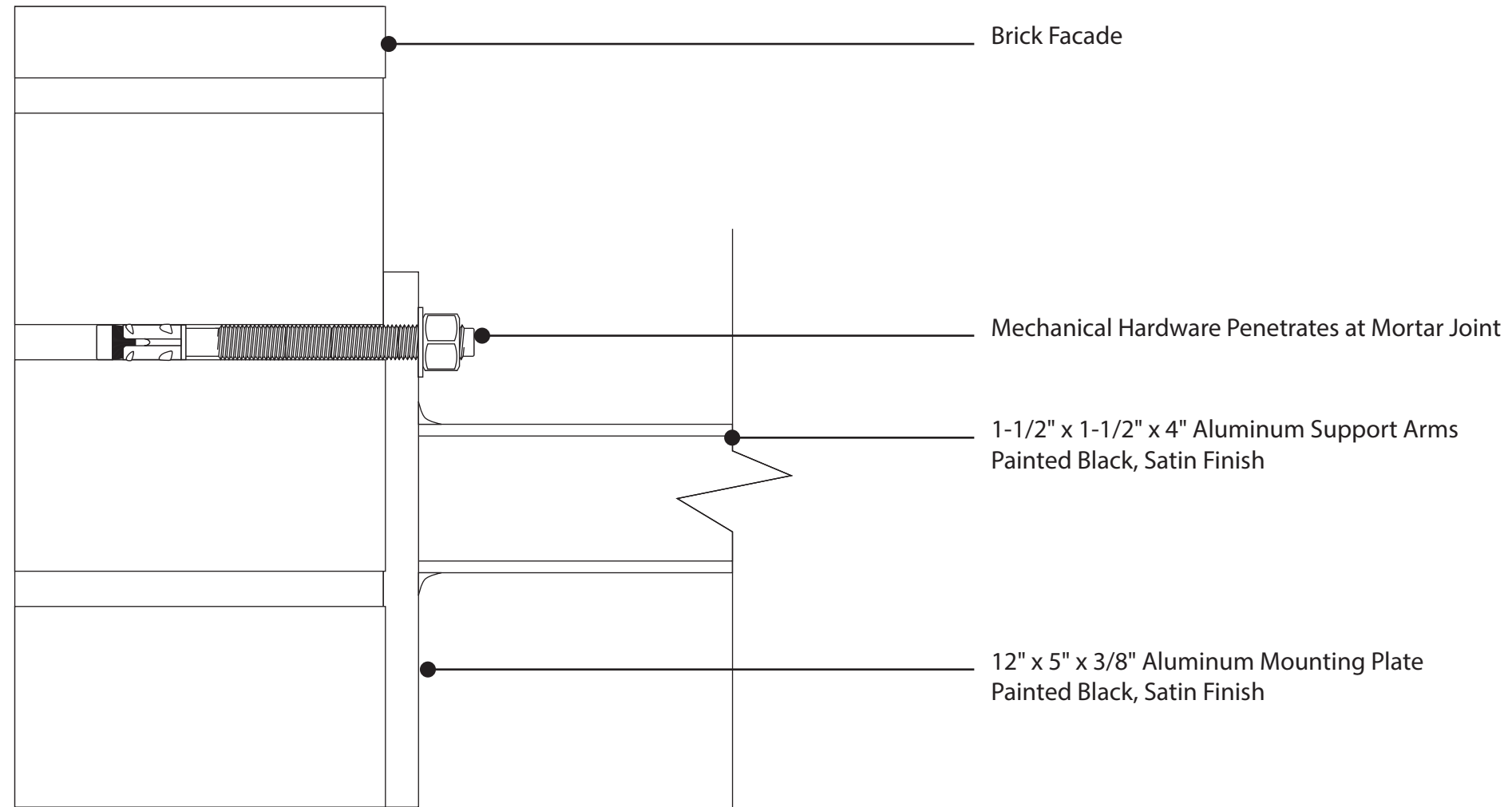





Orange (Exact Color TBD)



<b>SRPSIGN</b> CORPORATION 236 PEARL STREET SOMERVILLE, MA 02145 (617) 623-6222	PROJECT: BLADE SIGN ADDRESS: 125 CHARLES ST., BOSTON, MA 02122	<small>PROPRIETARY NOTICE:          THIS DRAWING SHEET AND CONTENTS          HEREIN ARE THE PROPERTY OF SRP          SIGN CORPORATION. USE OF THIS          DRAWING'S CONTENTS OR DESIGN          CONCEPTS FOR PURPOSES OTHER          THAN ESTIMATING, DRAWING          PREPARATION, AND/OR          MANUFACTURING FOR SRP SIGN          CORPORATION SHALL BE CAUSE FOR          LEGAL RECOURSE BY SRP SIGN          CORPORATION</small>	
	CLIENT: VICO STYLE		
	DRAWN BY: ADAM KNAUER      DATE: 5-16-2023		
	DESCRIPTION: EXTERIOR SIGNAGE		
	FILE LOCATION: Clients\Vico Style\Beacon Hill\Blade Sign\VicoStyle_BeaconHill_Blade_v2.pdf		
<b>2</b>			

Non-Illuminated Blade Sign  
 30" Dia. x 2"  
 Carved HDU Sign Foam  
 (More Durable Alternative to Wood)

Qty. (1)



 White  
 Black  
 Orange (Exact Color TBD)

<b>SRPSIGN</b> CORPORATION 236 PEARL STREET SOMERVILLE, MA 02145 (617) 623-6222	PROJECT: BLADE SIGN ADDRESS: 125 CHARLES ST., BOSTON, MA 02122	PROPRIETARY NOTICE: THIS DRAWING SHEET AND CONTENTS HEREIN ARE THE PROPERTY OF SRP SIGN CORPORATION. USE OF THIS DRAWING'S CONTENTS OR DESIGN CONCEPTS FOR PURPOSES OTHER THAN ESTIMATING, DRAWING PREPARATION, AND/OR MANUFACTURING FOR SRP SIGN CORPORATION SHALL BE CAUSE FOR LEGAL RECOURSE BY SRP SIGN CORPORATION	
	CLIENT: VICO STYLE		
	DRAWN BY: ADAM KNAUER      DATE: 5-16-2023		
	DESCRIPTION: EXTERIOR SIGNAGE		
	FILE LOCATION: Clients\Vico Style\Beacon Hill\Blade Sign\VicoStyle_BeaconHill_Blade_v2.pdf		
			



Non-Illuminated Blade Sign  
 30" Dia. x 2"  
 3/8" Acrylic Flush Mounted w/ VHB

Qty. (1)



Existing Conditions



White

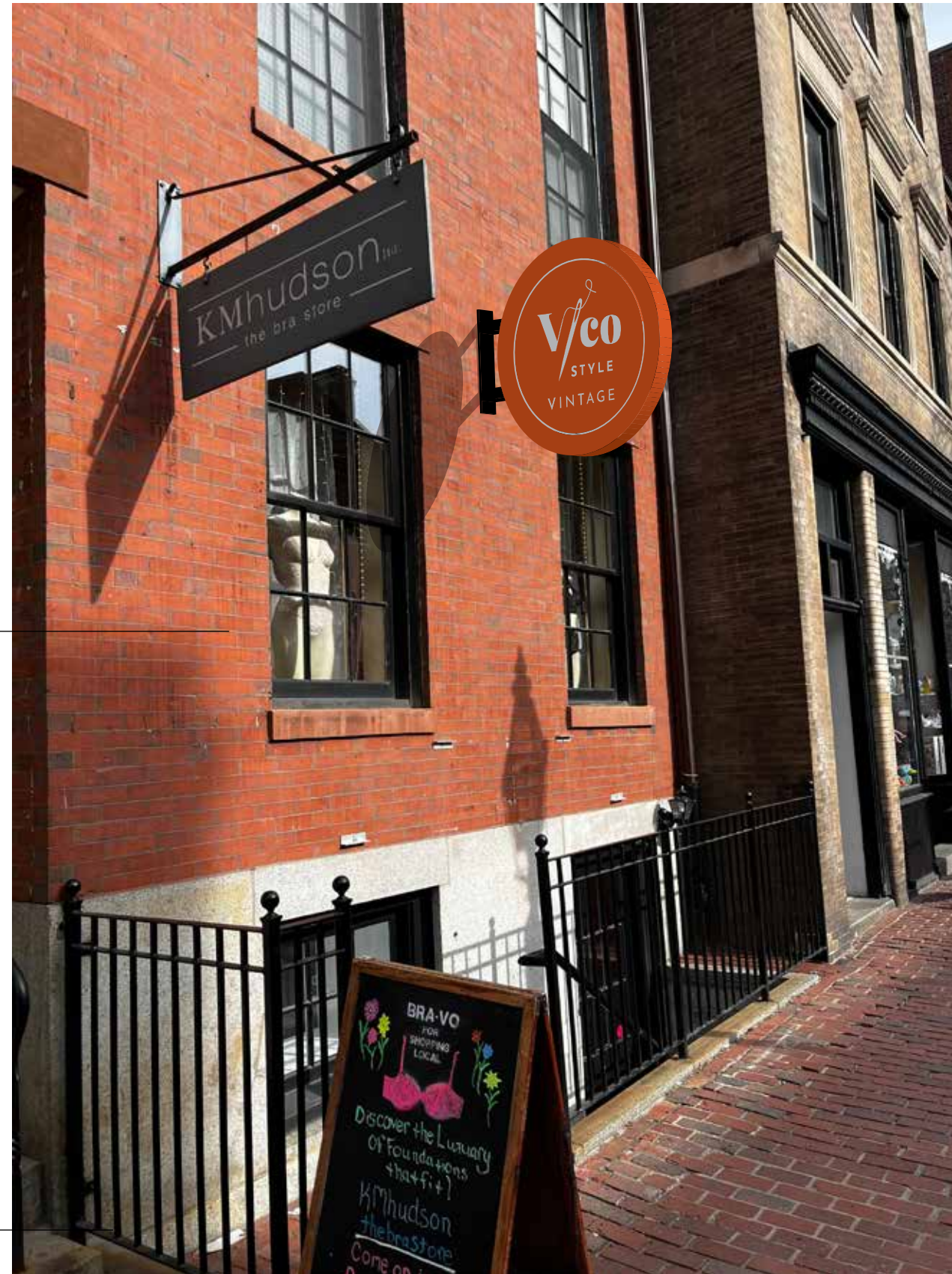


Black



Orange (Exact Color TBD)

78"  
A.F.F.



Proposed Conditions

**SRPSIGN**  
CORPORATION  
236 PEARL STREET  
SOMERVILLE, MA 02145  
(617) 623-6222

PROJECT: BLADE SIGN  
 ADDRESS: 125 CHARLES ST., BOSTON, MA 02122  
 CLIENT: VICO STYLE  
 DRAWN BY: ADAM KNAUER  
 DATE: 5-16-2023  
 DESCRIPTION: EXTERIOR SIGNAGE  
 FILE LOCATION: Clients\Vico Style\Beacon Hill\Blade Sign\VicoStyle\_BeaconHill\_Blade\_v2.pdf

PROPRIETARY NOTICE:  
 THIS DRAWING SHEET AND CONTENTS  
 HEREIN ARE THE PROPERTY OF SRP  
 SIGN CORPORATION. USE OF THIS  
 DRAWING'S CONTENTS OR DESIGN  
 CONCEPTS FOR PURPOSES OTHER  
 THAN ESTIMATING, DRAWING  
 PREPARATION, AND/OR  
 MANUFACTURING FOR SRP SIGN  
 CORPORATION SHALL BE CAUSE FOR  
 LEGAL RECOURSE BY SRP SIGN  
 CORPORATION

