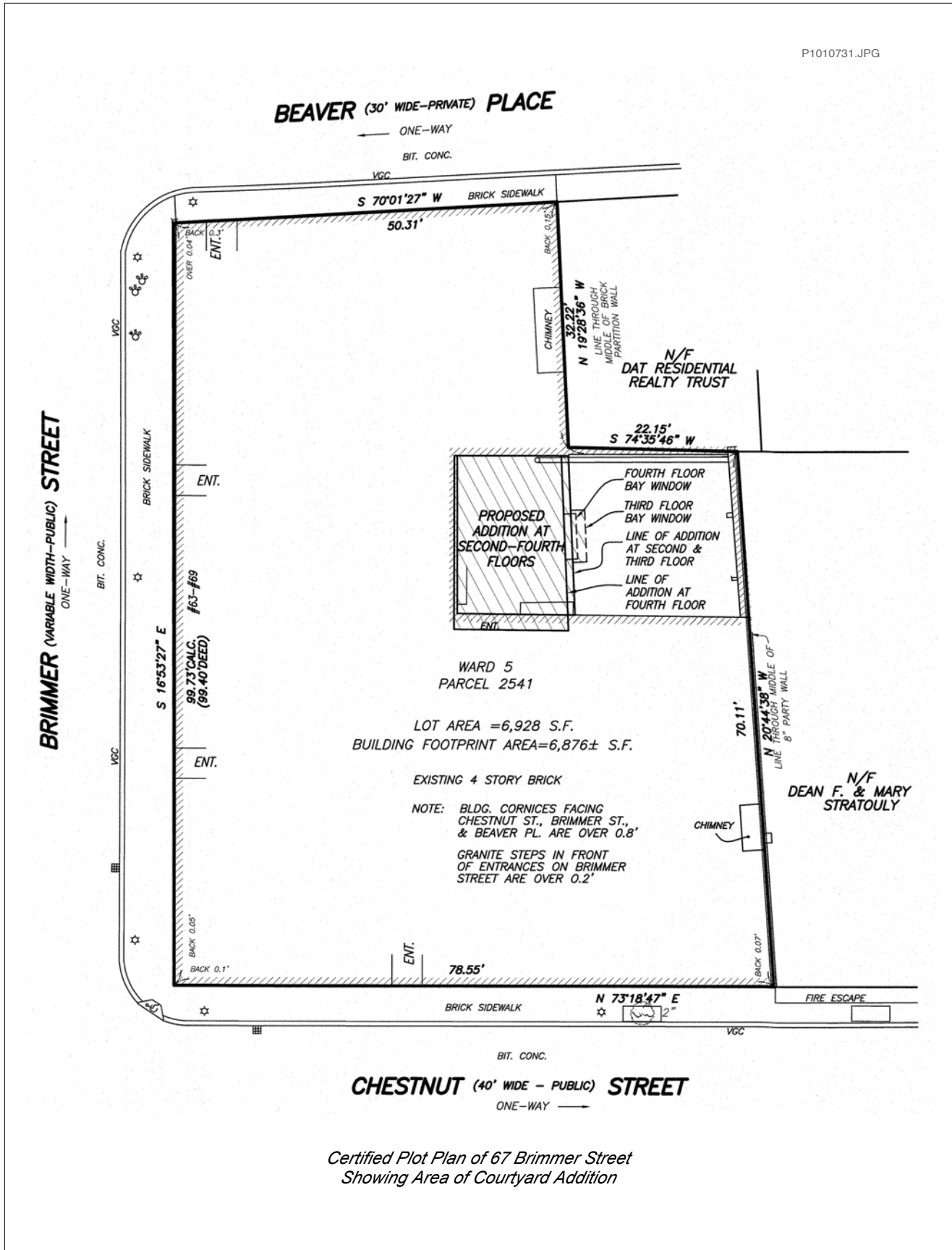




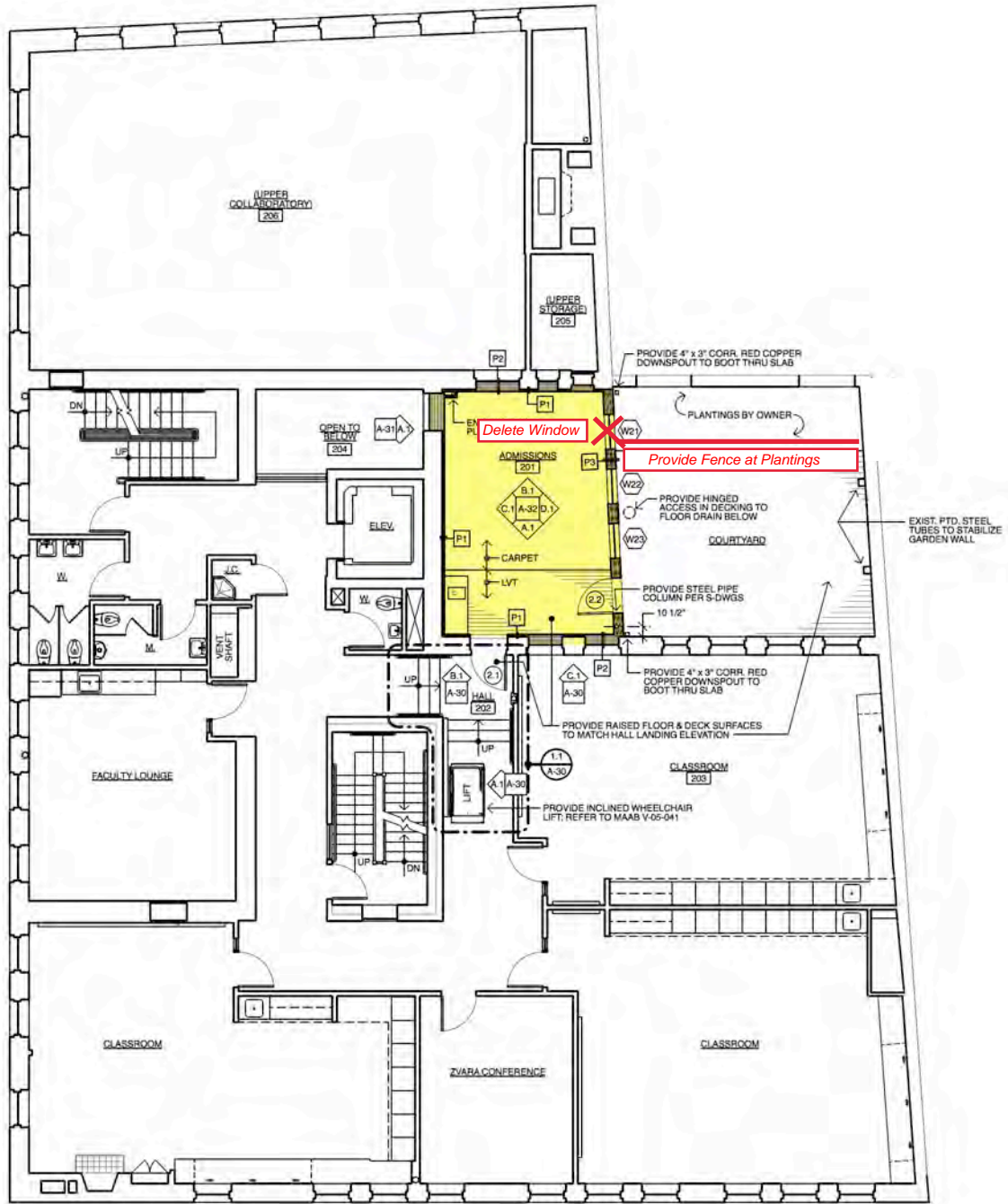
BRIMMER ST

NUT ST

DANIELS School



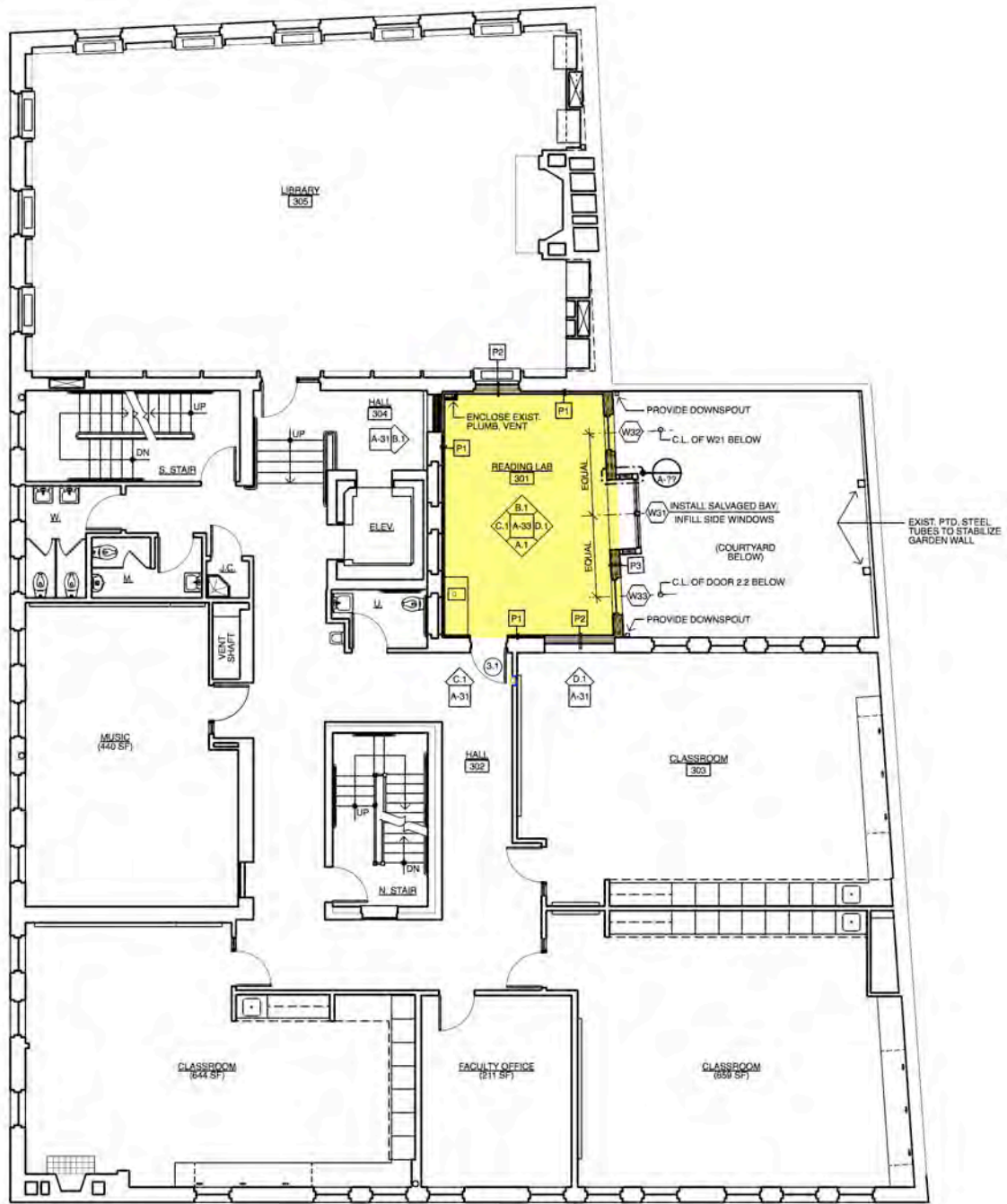
Certified Plot Plan of 67 Brimmer Street  
Showing Area of Courtyard Addition



1.1 SECOND FLOOR PLAN  
A-12 Scale: 1/8" = 1'-0"

NORTH

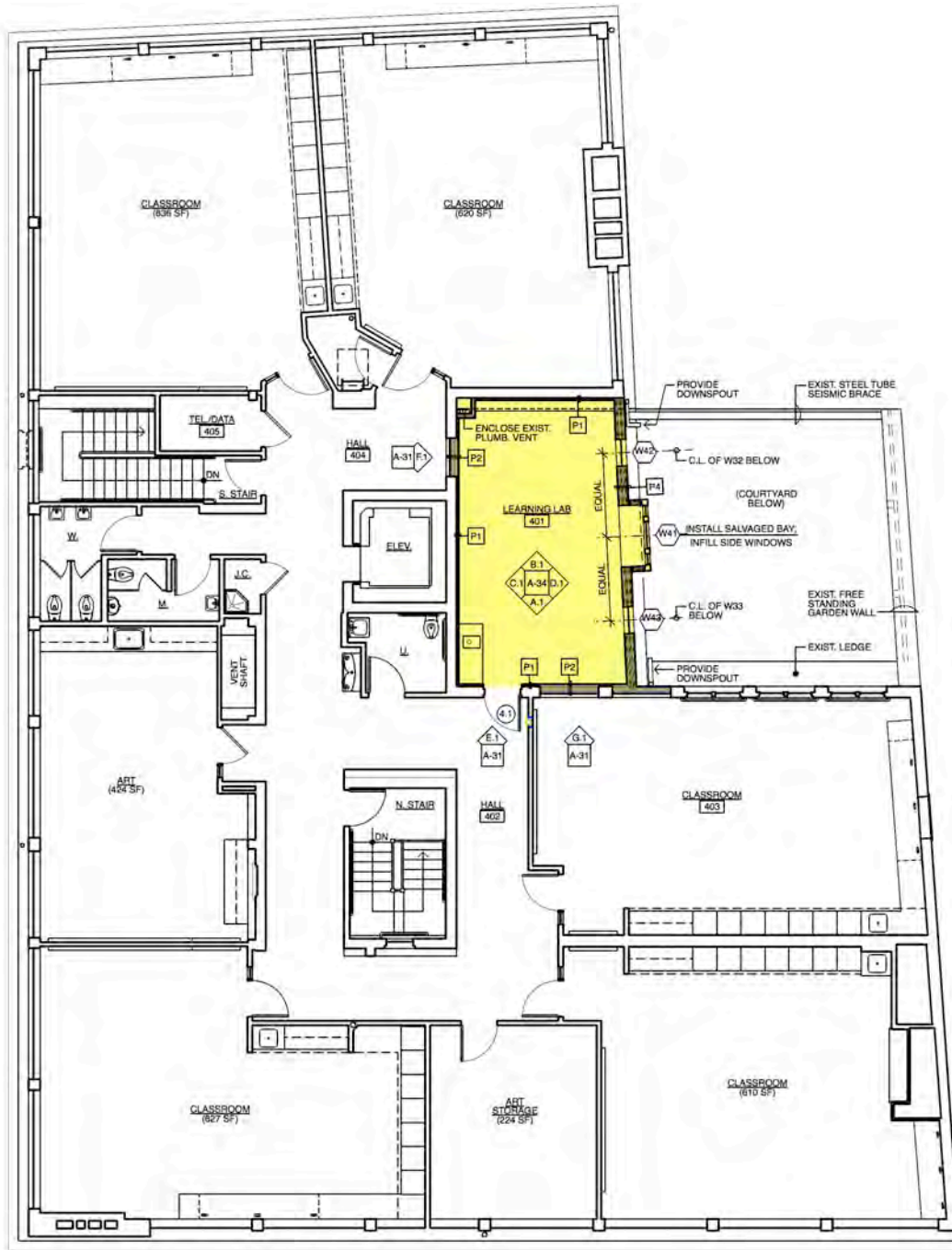
Second Floor Plan Showing Courtyard Addition



1.1 THIRD FLOOR PLAN  
A-13 Scale: 1/8" = 1'-0"

NORTH

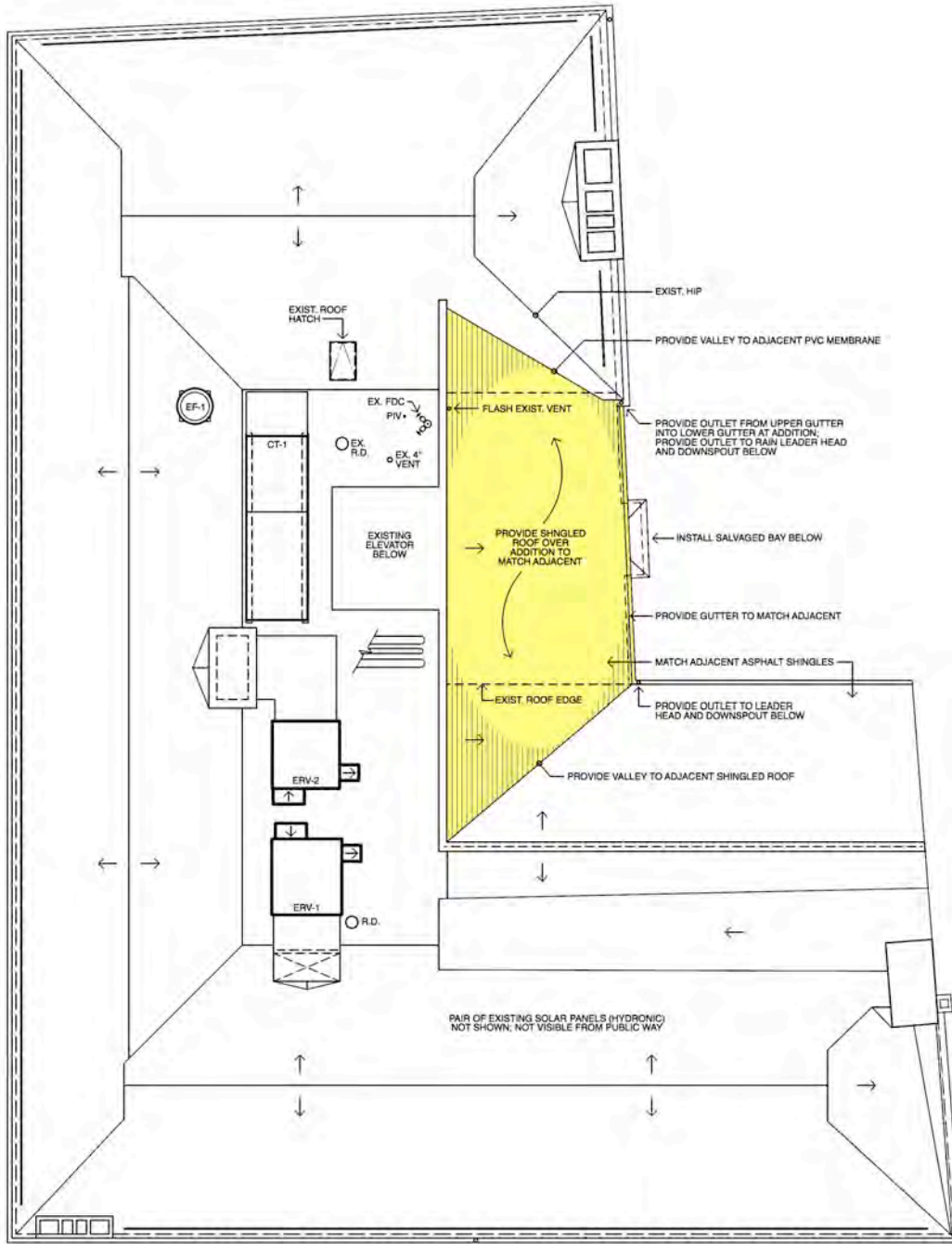
Third Floor Plan Showing Courtyard Addition



1.1 FOURTH FLOOR PLAN  
A-14 Scale: 1/8" = 1'-0"

NORTH

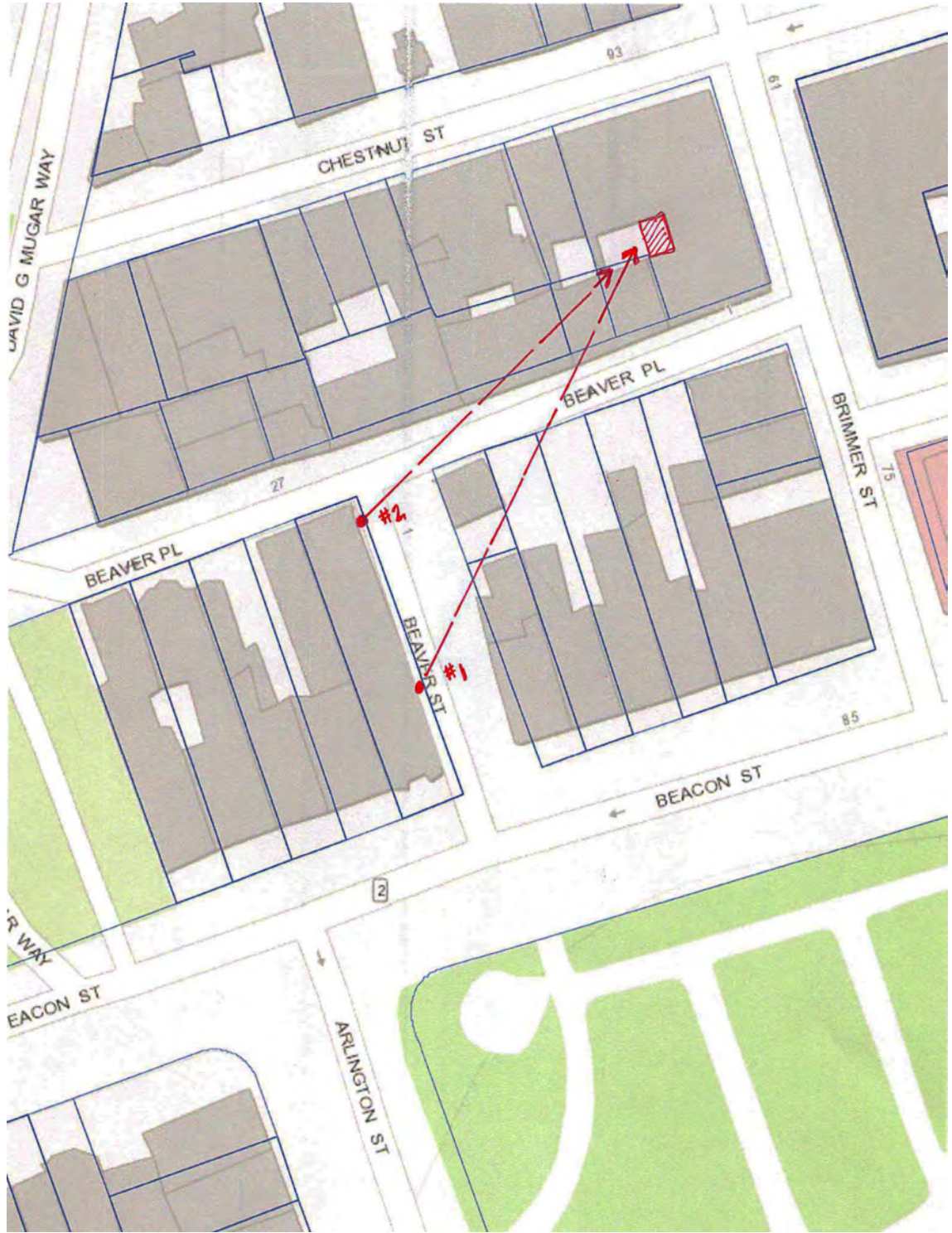
Fourth Floor Plan Showing Courtyard Addition



1.1 ROOF PLAN  
A-15 Scale: 1/8" = 1'-0"

NORTH

Roof Plan Showing Courtyard Addition



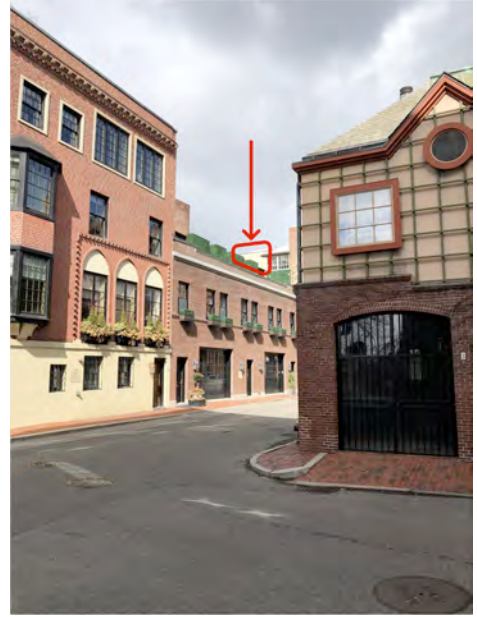
*Two Views from Public Way (Beaver Street);  
Upper Portion of Courtyard Addition Visible;  
#1 @ 230' Away and #2 @ 160' Away*

P1010732.JPG



*View #1 of 67 Brimmer from Beaver Street;  
Distance of Approximately 230' Away*

P1010731.JPG



*View #2 of 67 Brimmer from Beaver Street;  
Distance of Approximately 160' Away*

P1010734.JPG



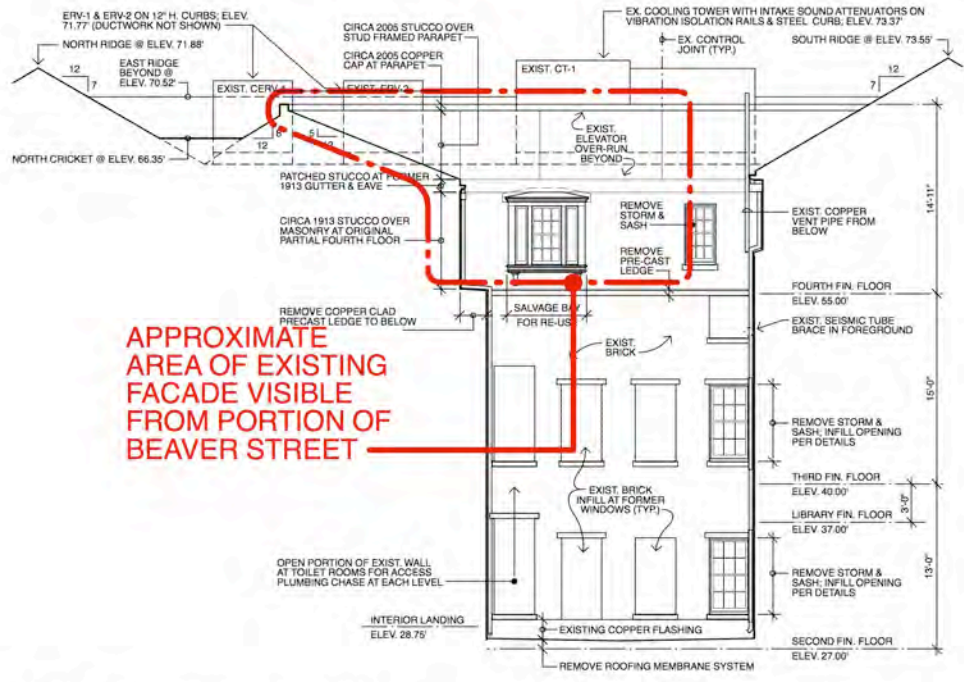
*Zoomed in View #1 of 67 Brimmer from Beaver Street*

P1010733.JPG



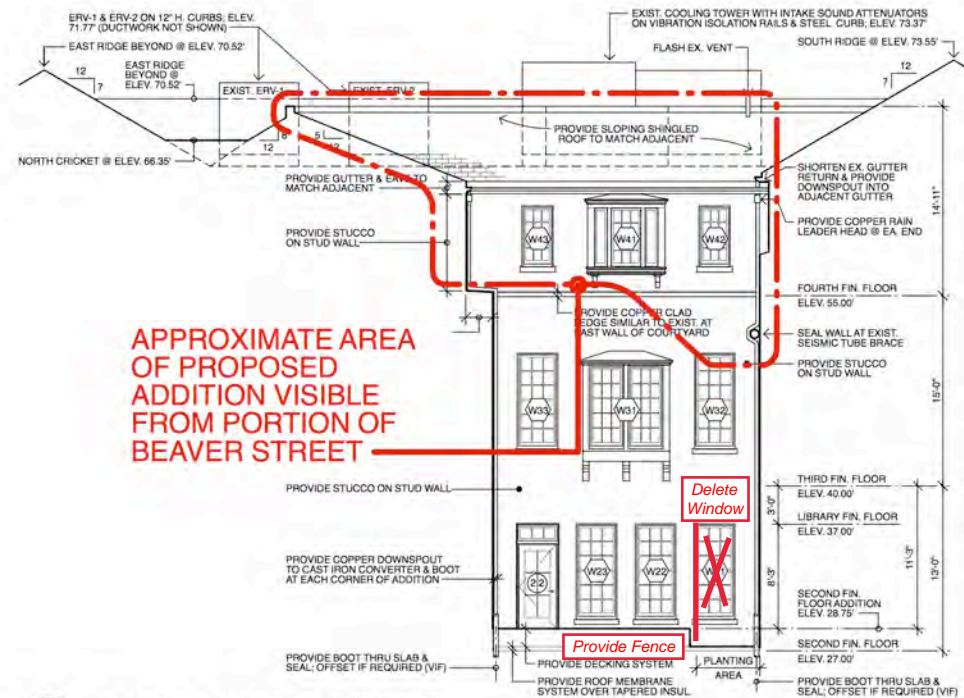
*Zoomed in View #1 of 67 Brimmer from Beaver Street*





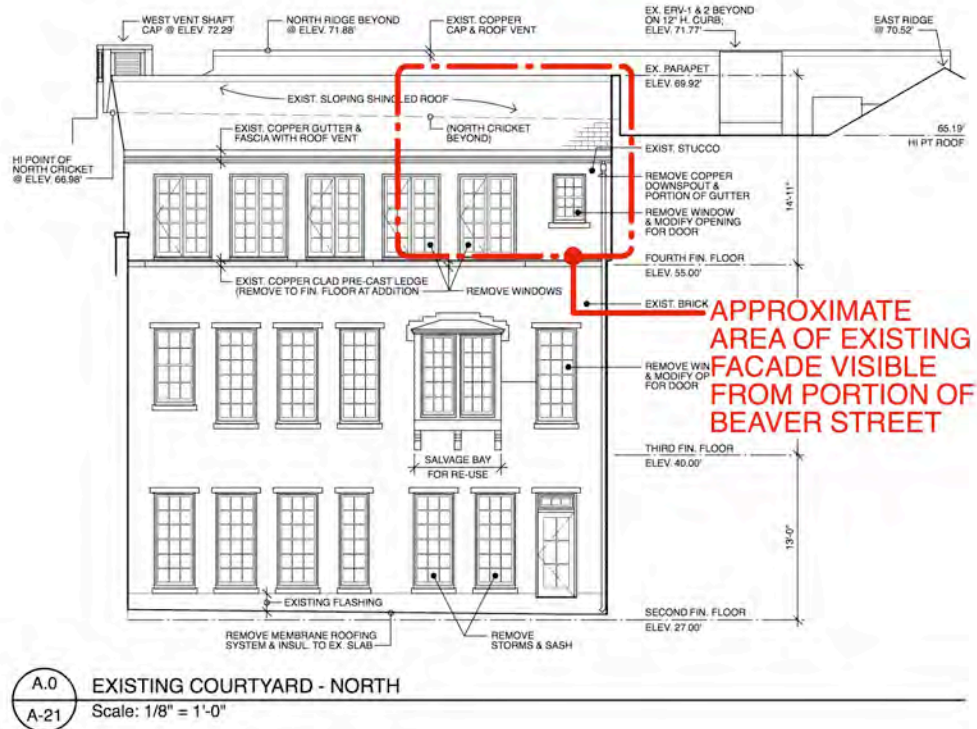
C.0 EXISTING COURTYARD - EAST  
 A-21 Scale: 1/8" = 1'-0"

*Existing East Exterior Elevation of Courtyard;  
 Circled Area Visible from Public Way*

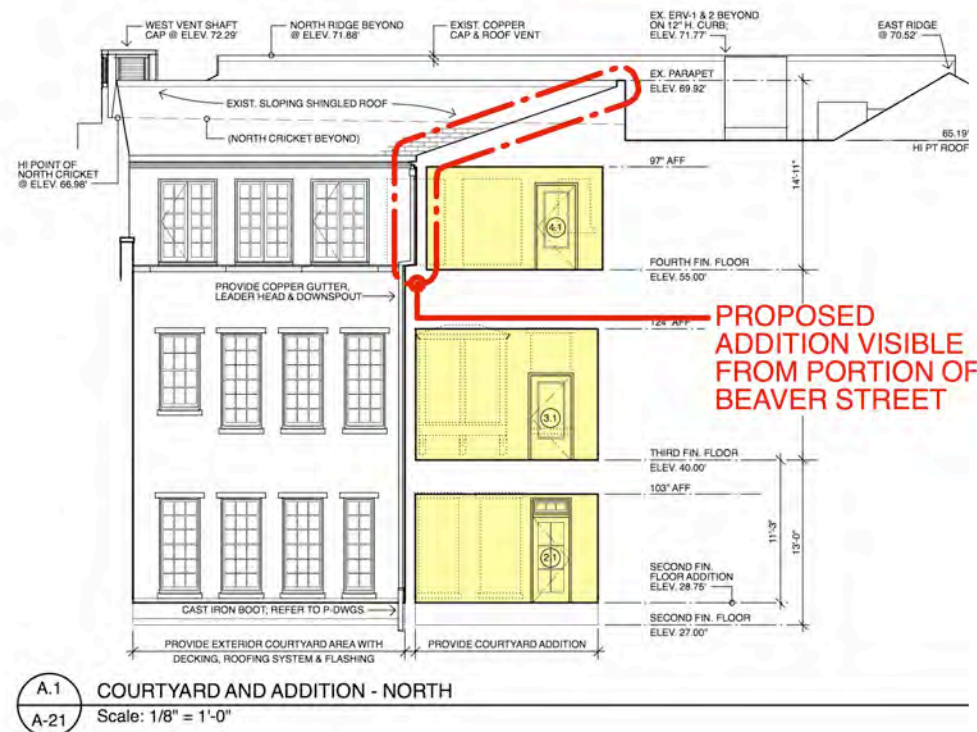


C.1 COURTYARD AND ADDITION - EAST  
 A-21 Scale: 1/8" = 1'-0"

*Proposed East Exterior Elevation of Courtyard Addition;  
 Circled Area Visible from Public Way*



*Existing North Exterior Elevation of Courtyard;  
Circled Area Visible from Public Way*



*Proposed North Exterior Elevation of Courtyard with Addition in Section;  
Circled Area Visible from Public Way*



*Magnified View #2 Showing Existing Courtyard Facade*



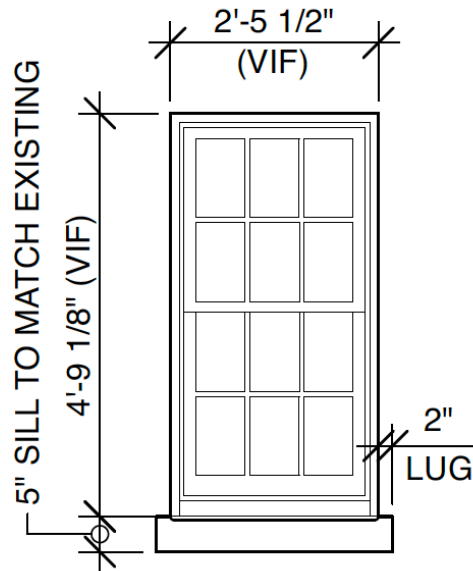
*Sketch of Proposed Addition at Magnified Overlay of View #2*



*Magnified View #1 Showing Existing Courtyard Facade*

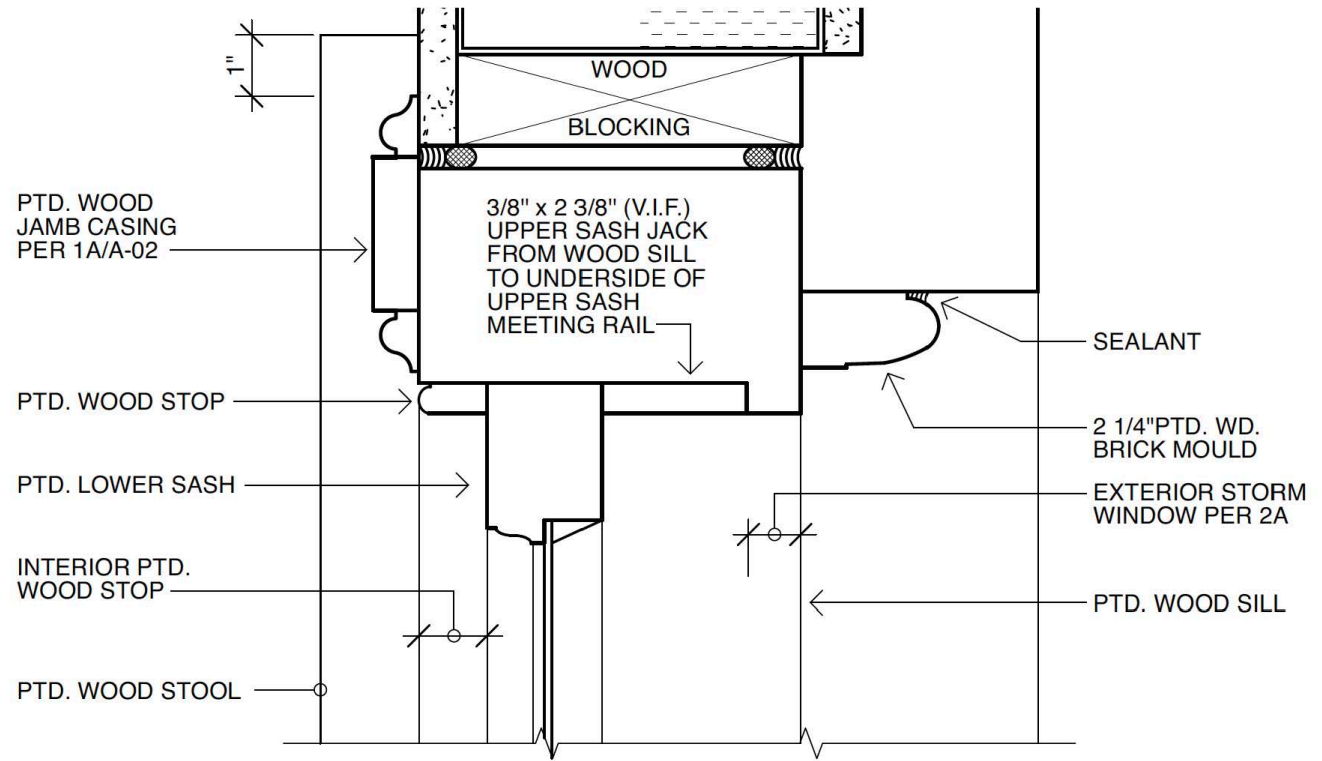


*Sketch of Proposed Addition at Magnified Overlay of View #1*



**FOURTH FLOOR OPERABLE WINDOWS;  
PAINTED WOOD WITH SINGLE PANE  
GLASS & TRUE-DIVIDED LIGHT MUNTINS**

*Proposed Fourth Floor Window to Match Salvaged Window at Courtyard Addition*



*Jamb Detail of Fourth Floor Window - True Divided Light in Wood to Match Salvaged Sash*



M. BORN



M. BORN



Park Street School

67