

Harvard Club Front Patio

374 Commonwealth Avenue, Boston, MA 02215

Project Description:

The Harvard Club is proposing to convert existing front yard into an outdoor patio for seasonal outdoor dining utilizing stone pavers, planting beds, and low lighting. To gain access to the space, a small portion of the existing fence and curb will be removed and replaced in-kind with a new gate. No work to take place on building facade, scope is limited to the front yard only

Historical Review:

Architect: Parker, Thomas, and Rice

Contractor: George A. Fuller Co.

Constructed: 1912-13

Original Use: Harvard Club Clubhouse (current)

District: Back Bay Architectural District

Zoning Summary:

Zone: Ward 5; H-3-65 (Apartment Residential) & B-8-120b (General Business)

Use: Private Club

Overlays*: Groundwater Conservation Overlay District, Back Bay Architectural District, Restricted Parking Overlay District, Parks Design

*As outlined in the letter to The Harvard Club prepared by McDermott, Quilty & Miller LLP for regulatory, zoning and permitting requirements - dated November 2nd, 2021

Sheet List:

#	Sheet Name	BBAC Submission 06/21/2022
BBAC-0	Cover	•
BBAC-1	Existing/Demo Site Plan	•
BBAC-2	Proposed Site Plan	•
BBAC-3	Existing Front Elevation	•
BBAC-4	Proposed Front Elevation	•
BBAC-5	Typical Section Through Yard	•
BBAC-6	Details	•
BBAC-7	Site Lighting Plan	•



Contacts:

OWNER

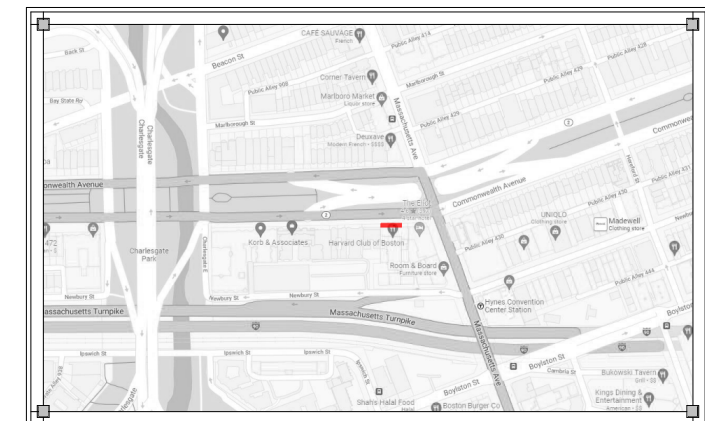
The Harvard Club
Attn: Roger Schofield
374 Commonwealth Avenue
Boston, MA 02115
Phone: 617-450-8403
Email: rschofield@harvardclub.com

ARCHITECT

Meyer & Meyer Architects, Inc.
Attn: Patrick Myers, AIA
396 Commonwealth Avenue
Boston, MA 02215
Phone: 617-266-0555
Email: patrickm@meyerandmeyerarchitects.com

Location Map

374 Commonwealth Avenue
Boston, Massachusetts 02115
(Back Bay)



MEYER & MEYER, INC.

ARCHITECTURE • INTERIORS

396 COMMONWEALTH AVENUE BOSTON, MASSACHUSETTS 02215



MMXXII

BBAC Submission
June 21st, 2022





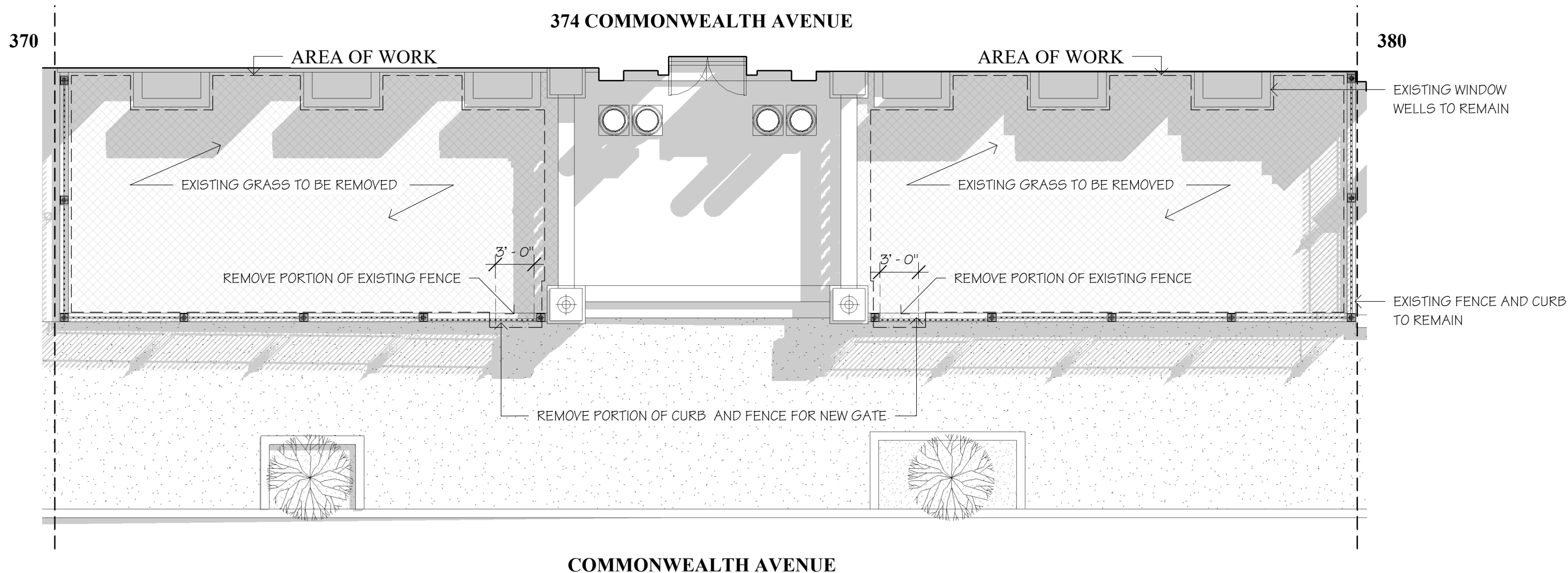
♿
ACCESSIBLE
ENTRANCE AT
NEWBURY ST.



LANE
HT

FIRE
DEPARTMENT





1 Existing Site/Demo Plan
1/8" = 1'-0"

06/21/22

Harvard Club Front Patio

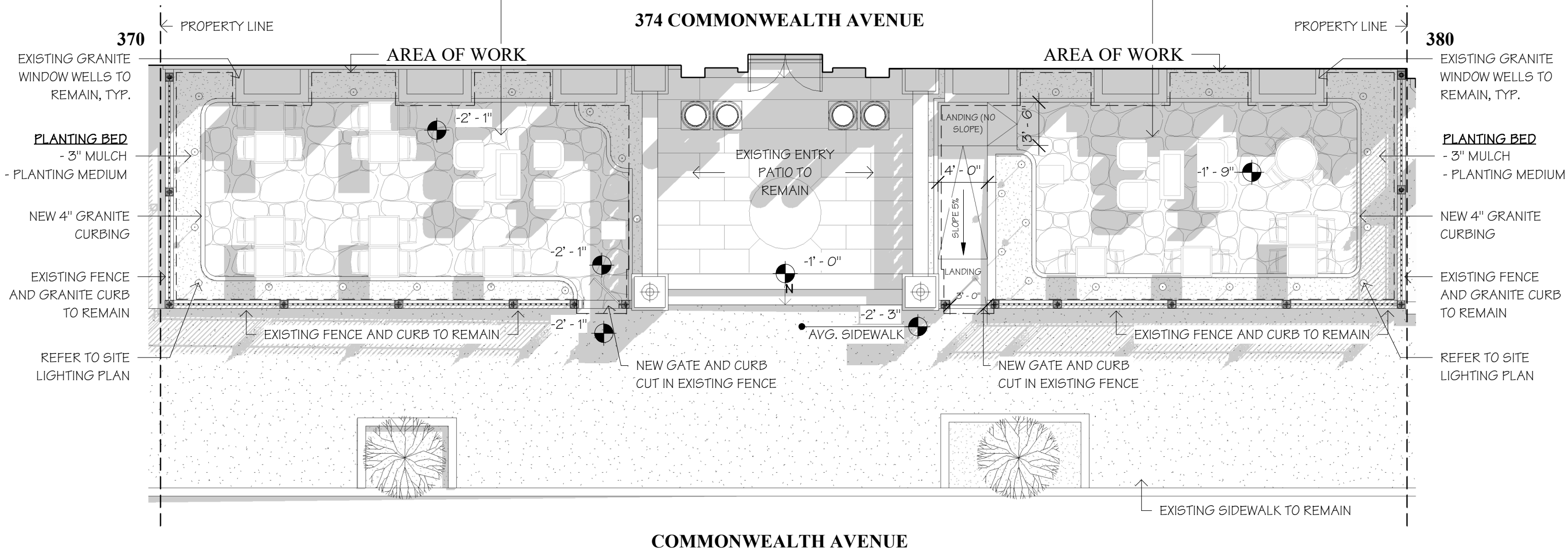
374 Commonwealth Avenue, Boston, MA 02215



MEYER & MEYER
I N C.
ARCHITECTURE & INTERIORS
396 Commonwealth Avenue
Boston, Massachusetts 02215
6 1 7 2 6 6 0 5 5 5
www.meyerandmeyerarchitects.com

STONE PATIO ASSEMBLY

- IRREGULAR STONE PAVERS
- 1" JOINTS FILLED WITH 1/8" PEASTONE (POROUS)
- (2") 3/8" CRUSHED STONE SETTING BED
- (12") 3/4" CRUSHED STONE BED
- GEOTEXTILE FABRIC



1 Site Plan
1/8" = 1'-0"

06/21/22

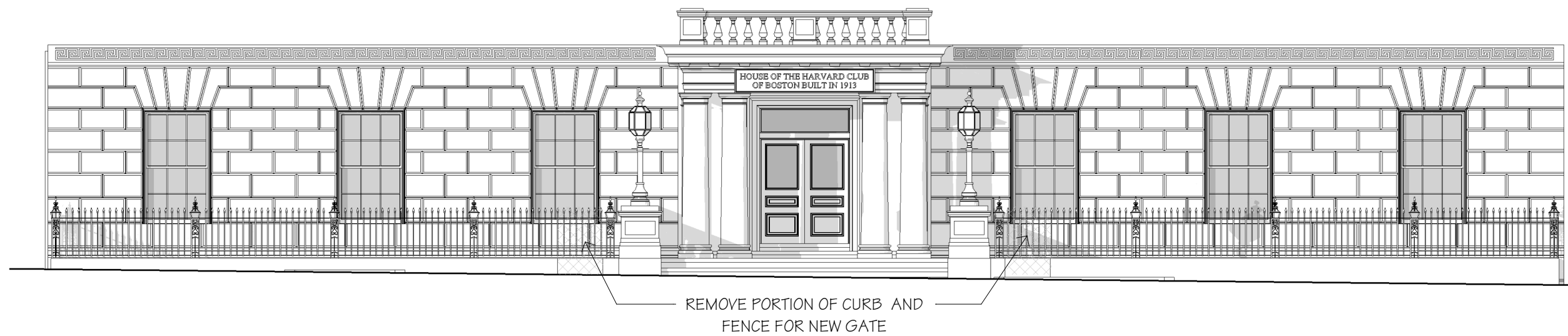
Harvard Club Front Patio

374 Commonwealth Avenue, Boston, MA 02215



MMXXI

MEYER & MEYER
I N C.
ARCHITECTURE & INTERIORS
396 Commonwealth Avenue
Boston, Massachusetts 02215
6 1 7 2 6 6 0 5 5 5
www.meyerandmeyerarchitects.com



1 Partial South Elevation
1/8" = 1'-0"

06/21/22

Harvard Club Front Patio

374 Commonwealth Avenue, Boston, MA 02215



MEYER & MEYER
I N C.
ARCHITECTURE & INTERIORS
396 Commonwealth Avenue
Boston, Massachusetts 02215
6 1 7 2 6 6 0 5 5 5
www.meyerandmeyerarchitects.com



FIELD BUSHHAMMER SAWCUT
STONE CURB TO MATCH STREET
SIDE FINISH; EASE EDGES OF
STONE, TYPICAL BOTH SIDES

NEW SWINGING GATE

- SOLID STEEL PICKETS
- 1" JOINTS FILLED WITH 1/8" PEASTONE (POROUS)
- GALVANIZED AND POWDER COATED MATTE BLACK TO
- SPECIALTY DECORATIVE CENTER CASTING
- HYDRAULIC HINGES AND LOCKING HARDWARE

1 Proposed Partial South Elevation
1/8" = 1'-0"

06/21/22

Harvard Club Front Patio

374 Commonwealth Avenue, Boston, MA 02215



MMXXI

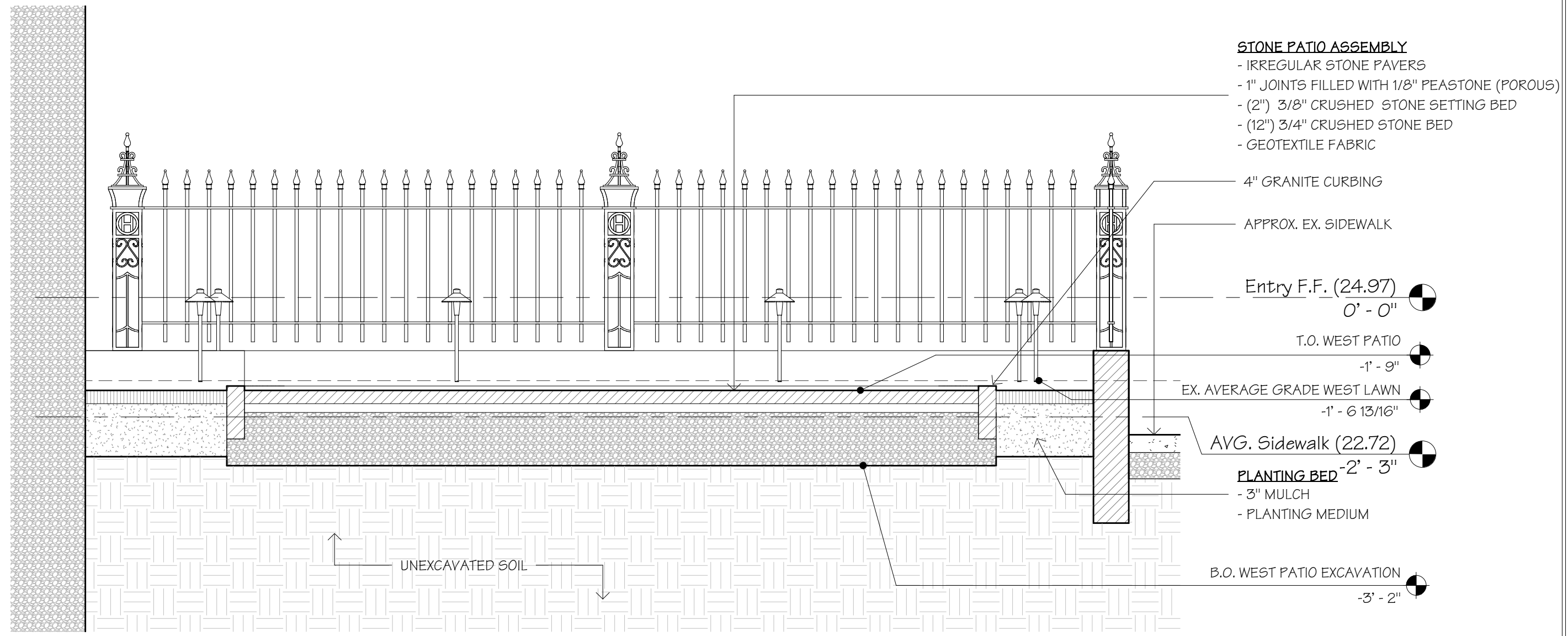
MEYER & MEYER
I N C.

ARCHITECTURE & INTERIORS

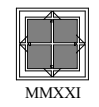
396 Commonwealth Avenue
Boston, Massachusetts 02215

6 1 7 2 6 6 0 5 5 5

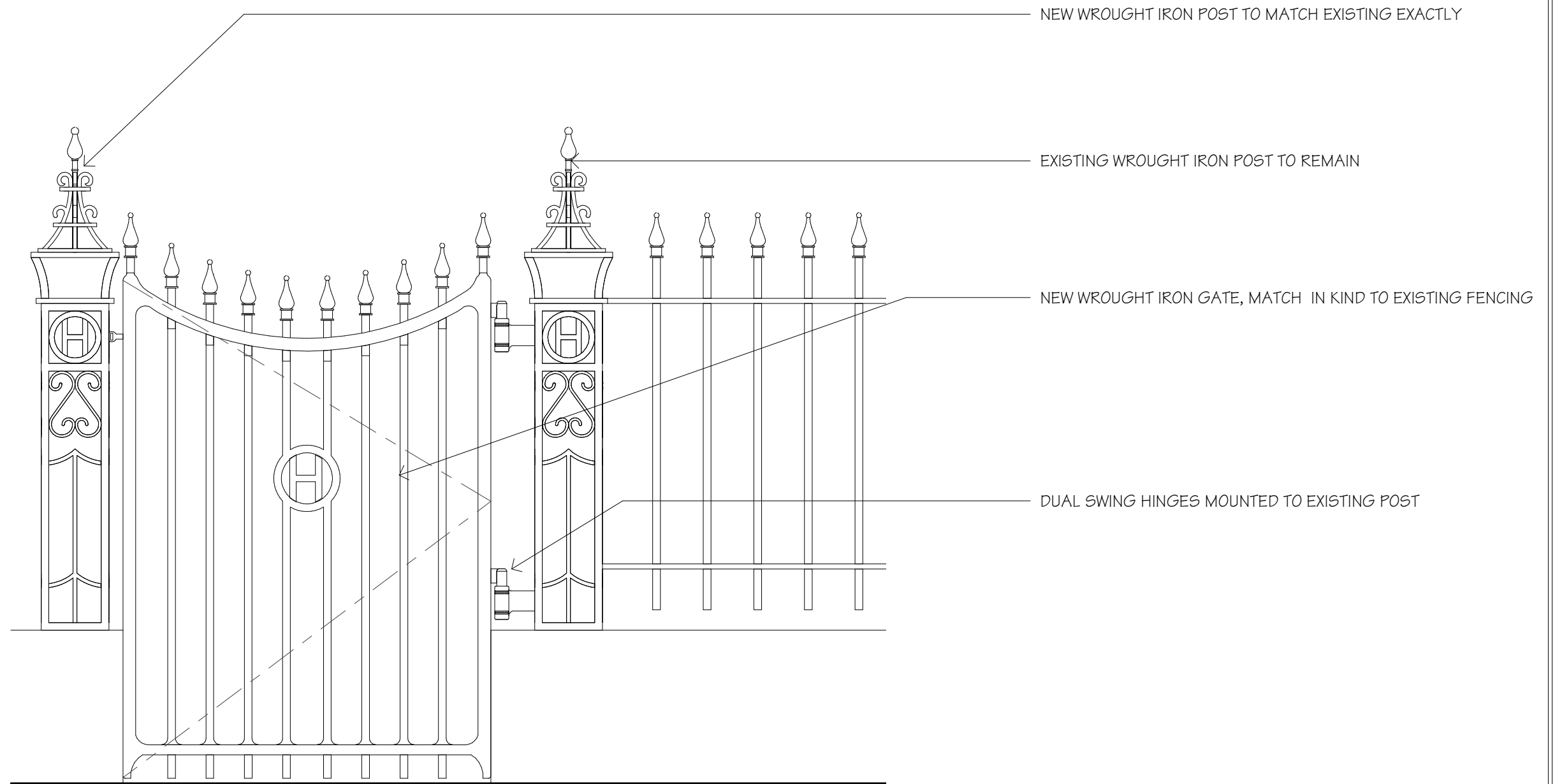
www.meyerandmeyerarchitects.com



1 Typical Section Through Yard
1/2" = 1'-0"



© 2017 - Meyer & Meyer, Inc. - All Rights Reserved



1 Gate Elevation
1" = 1'-0"

06/21/22

Harvard Club Front Patio

374 Commonwealth Avenue, Boston, MA 02215

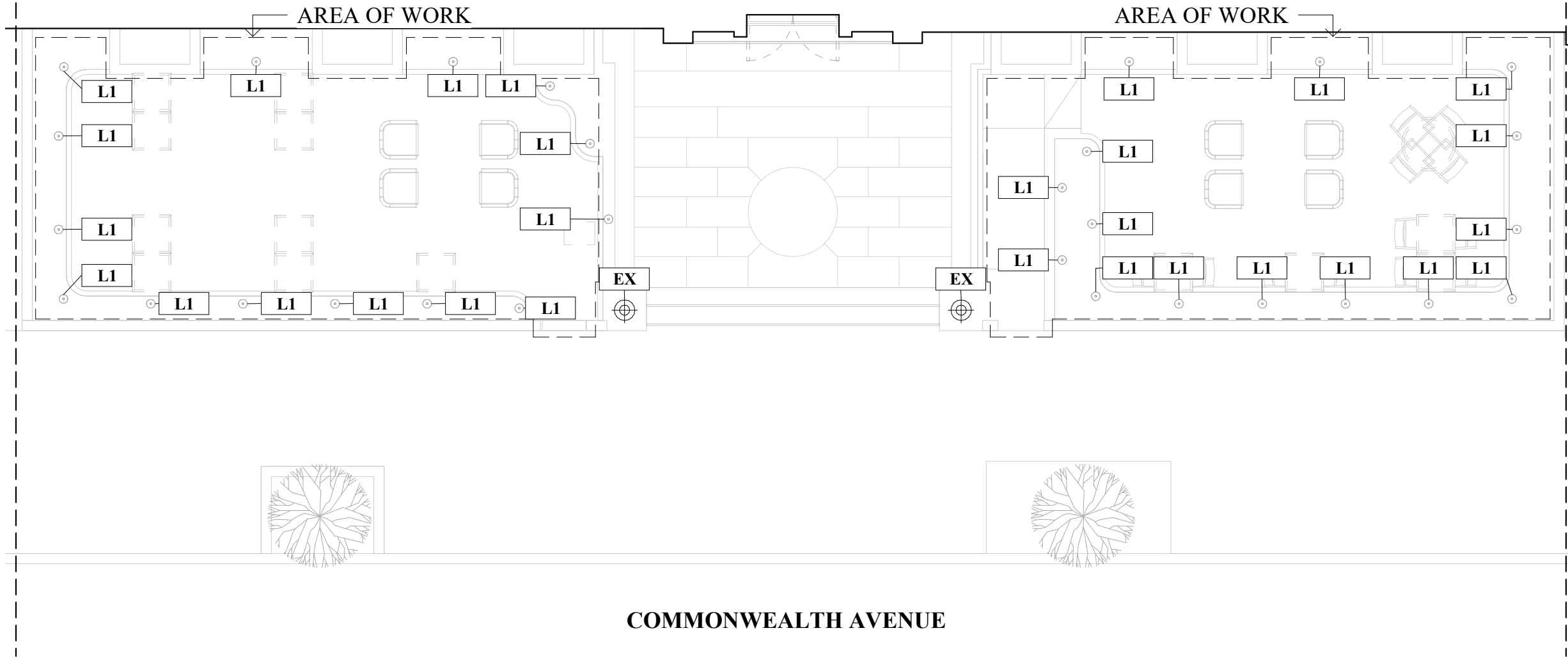


MEYER & MEYER
I N C.
ARCHITECTURE & INTERIORS
396 Commonwealth Avenue
Boston, Massachusetts 02215
6 1 7 2 6 6 0 5 5 5
www.meyerandmeyerarchitects.com

370

374 COMMONWEALTH AVENUE

380



1 Partial Site Lighting Plan
1/8" = 1'-0"

LIGHTING SCHEDULE

MARK	DESCRIPTION	MANUFACTURER	MODEL #	OUTPUT	BULB	FINISH	COMMENTS
L1	LANDSCAPE PATH LIGHT	B-K LIGHTING	LIGHTSTICK LED LT-18-E-LED-e71-BZW-1-A18-SF	3 WATTS	LED	BRONZE WRINKLE	
EX	EXISTING LIGHT POST						

06/21/22

Harvard Club Front Patio

374 Commonwealth Avenue, Boston, MA 02215



MEYER & MEYER
I N C.
ARCHITECTURE & INTERIORS
396 Commonwealth Avenue
Boston, Massachusetts 02215
6 1 7 2 6 6 0 5 5 5
www.meyerandmeyerarchitects.com