

O'DAY PLAYGROUND

South End Landmarks Commission - PREVIEW



June 6, 2023

PROJECT SCHEDULE & FUNDING



TYPES OF FEEDBACK



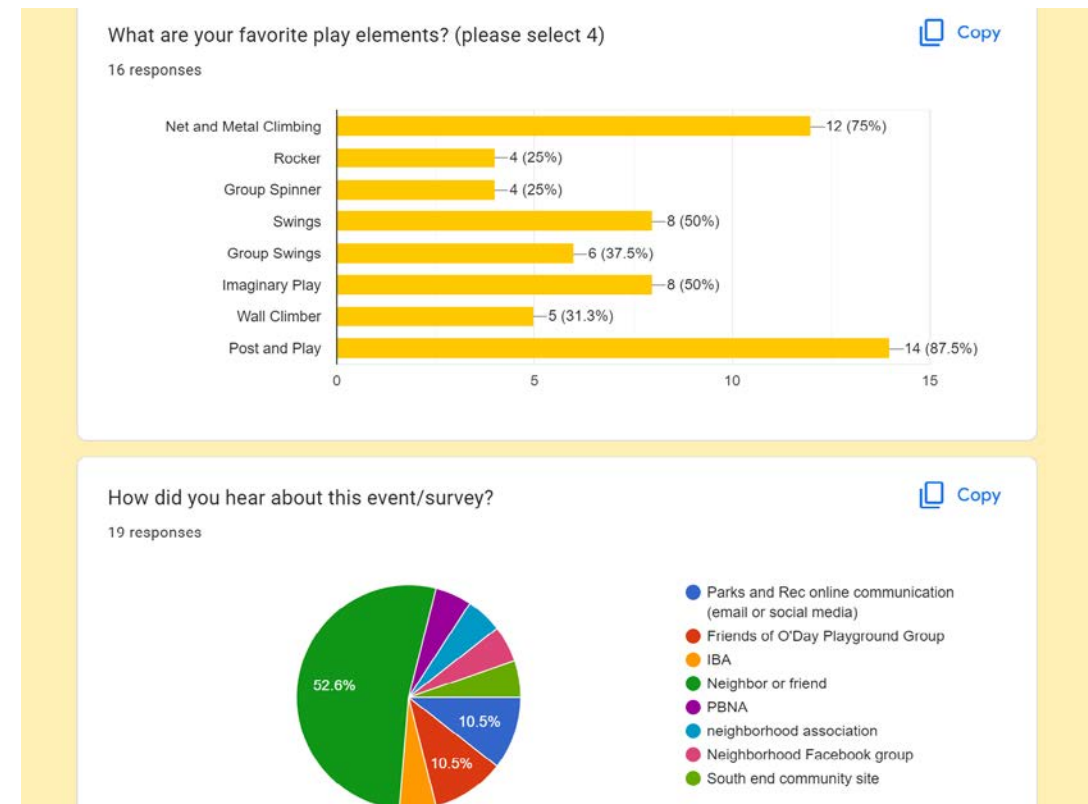
In-Person Meeting



Daycare Pick Up/Drop Off

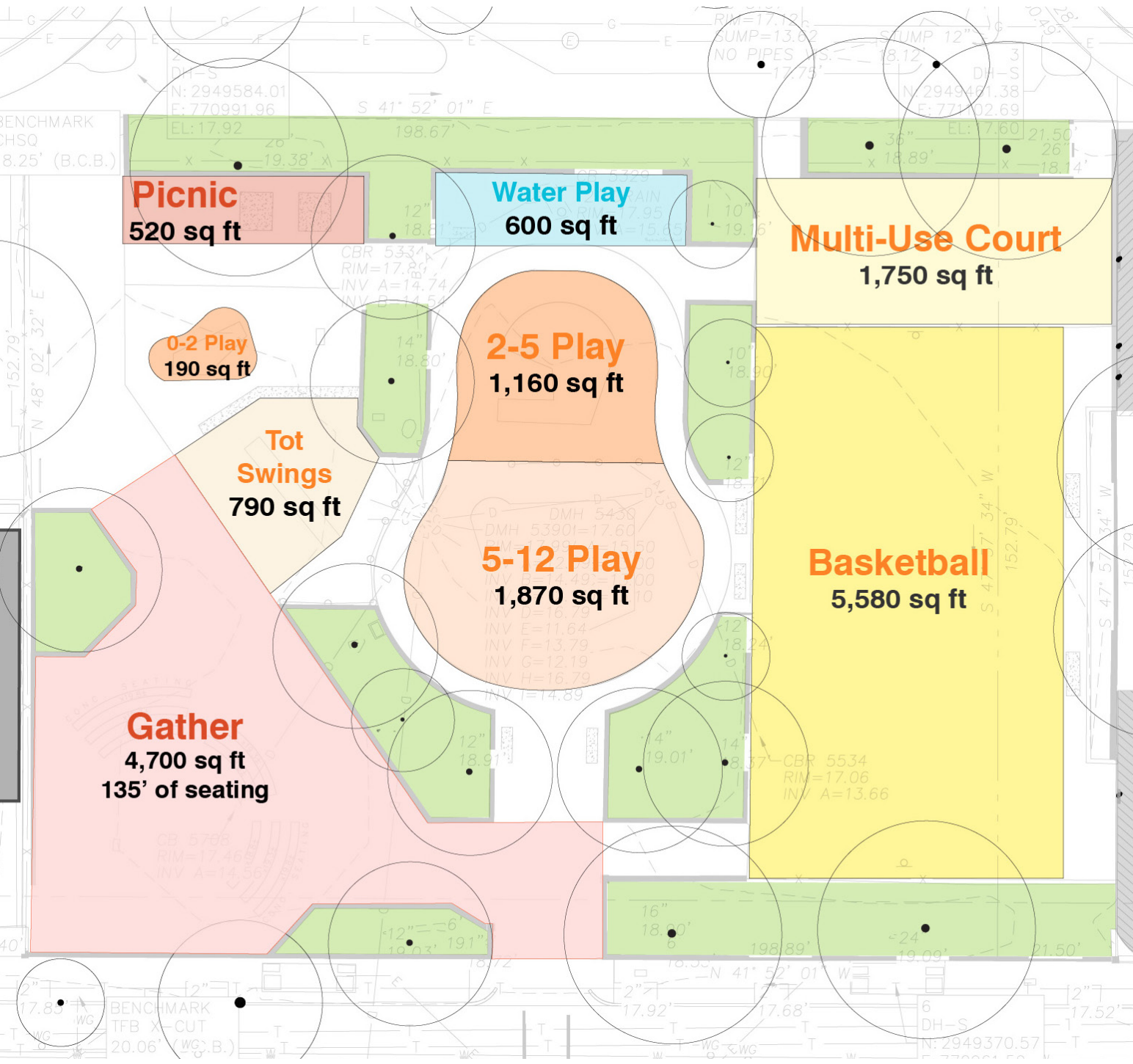


Bingo Night Fliers

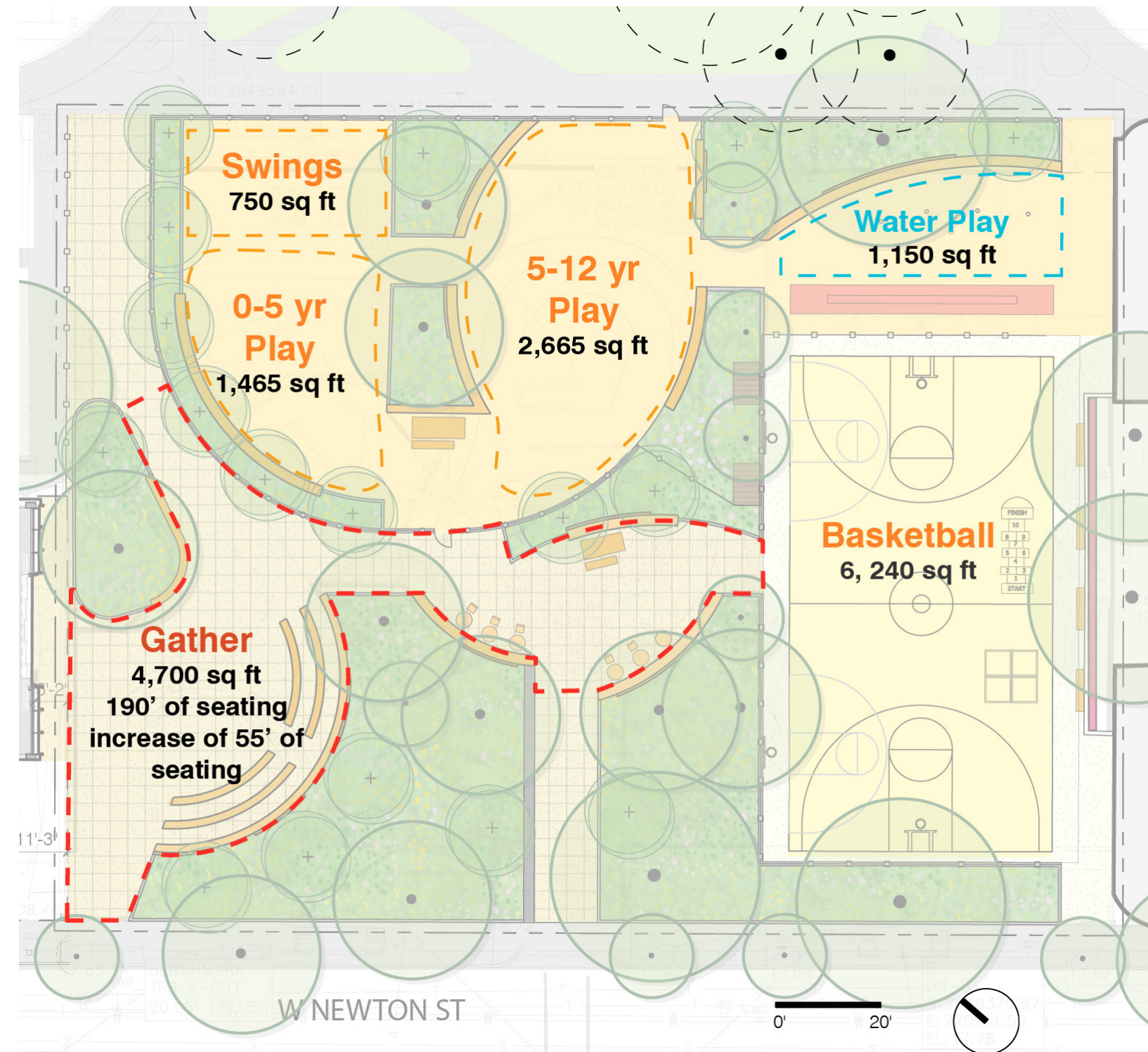


Survey

PROGRAM COMPARISON



Existing
18 Trees



Proposed
33 Trees Total (Adds 17 Trees / Removes 2)

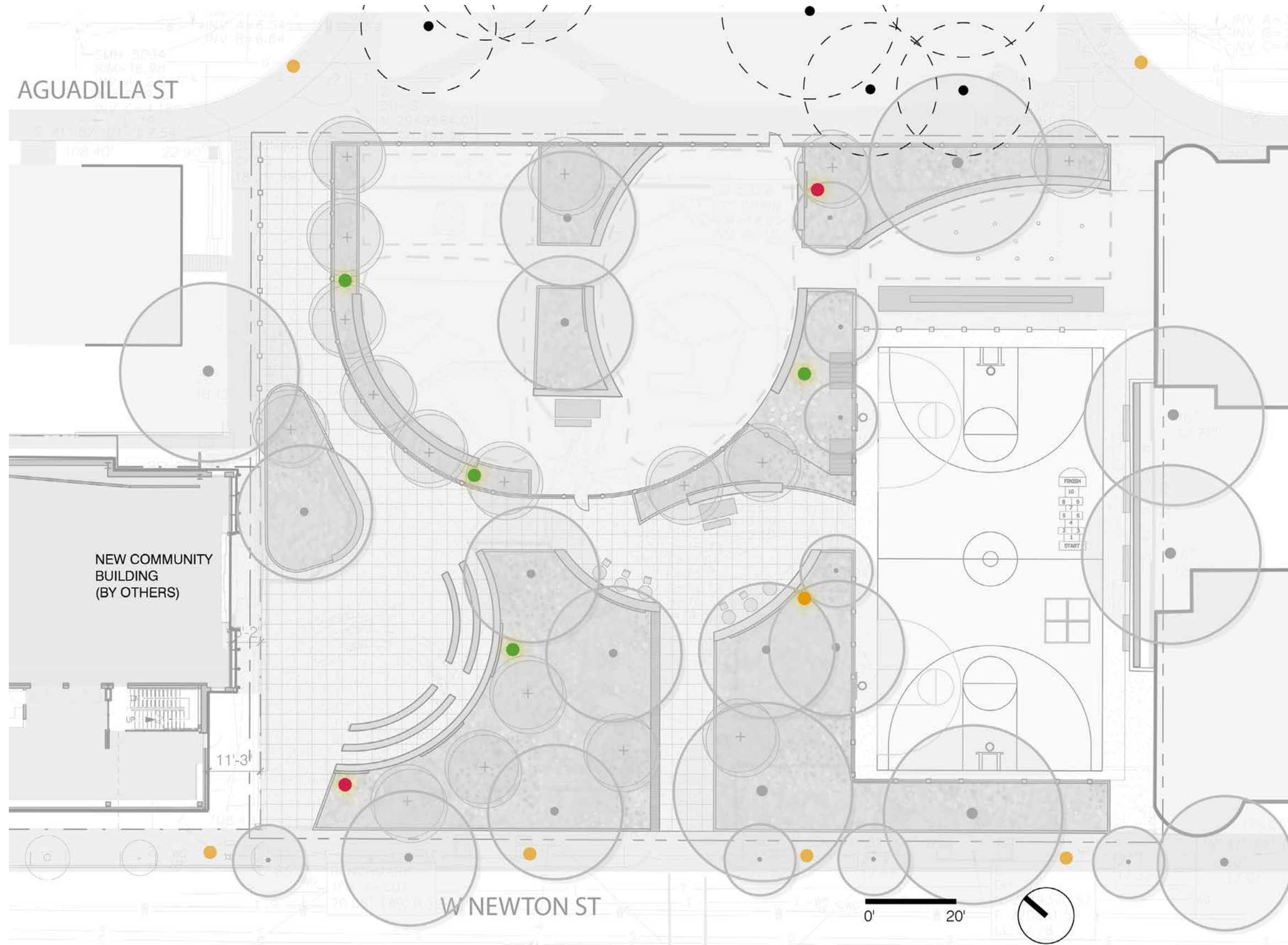
PROPOSED PLAN



SITE FURNISHINGS

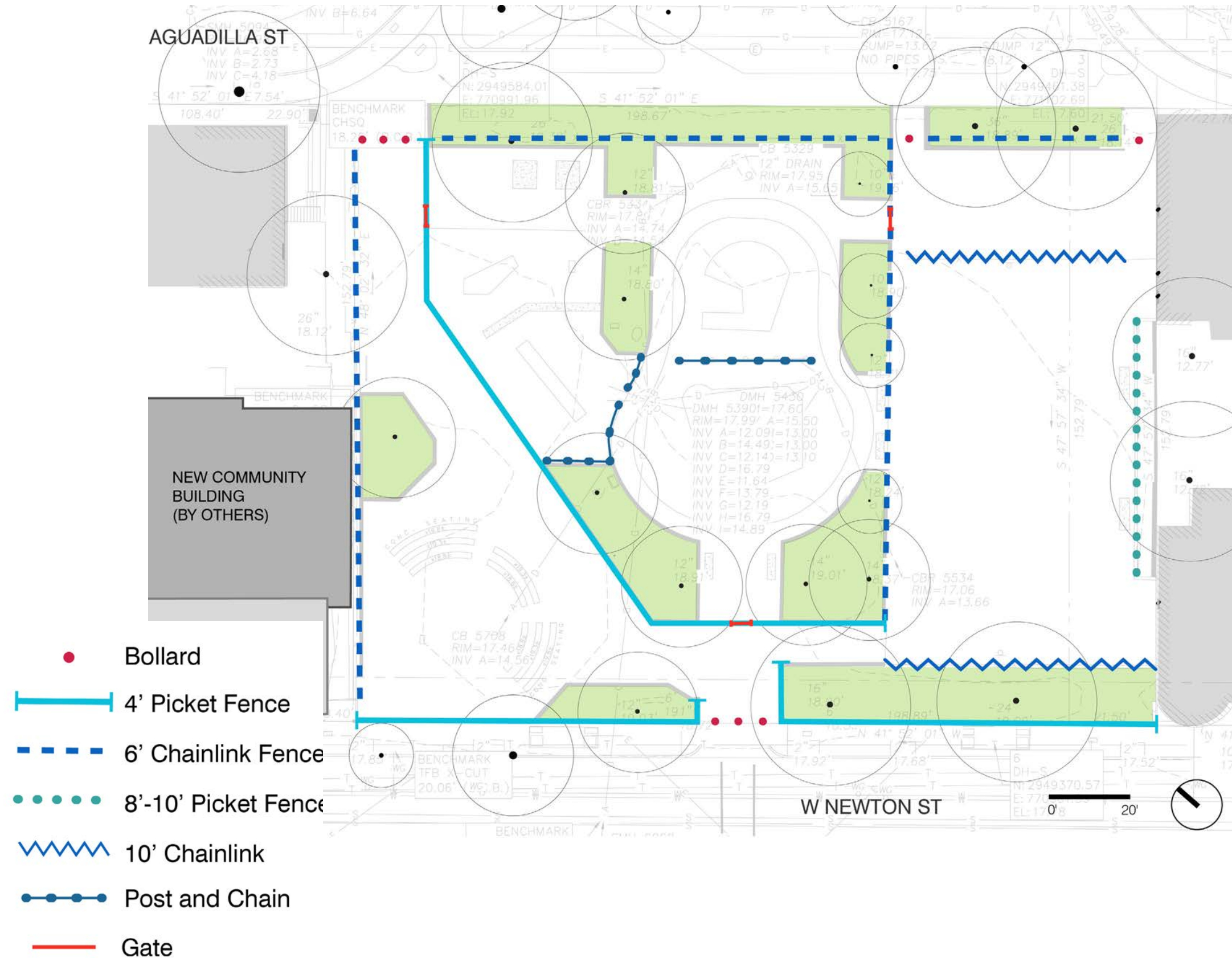
1. Lighting
2. Fencing
3. Site Furniture
 - Bleachers, Game Tables, and Picnic Tables
 - Gather Area Seat Tops
 - Water Fountain
 - Play Out Looks
4. Play Equipment
5. Water Feature
6. Paving
7. Basketball Court
8. Views

LIGHTING- PROPOSED

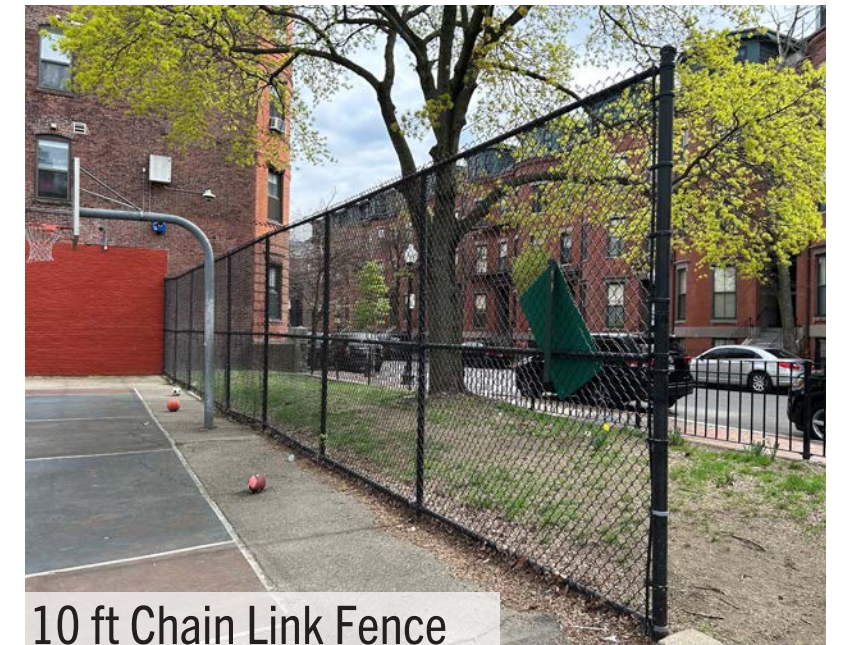


- Existing to remain
- Relocate and reset
- (2) New lights to match existing

FENCING- EXISTING



6ft Chain Link Fence

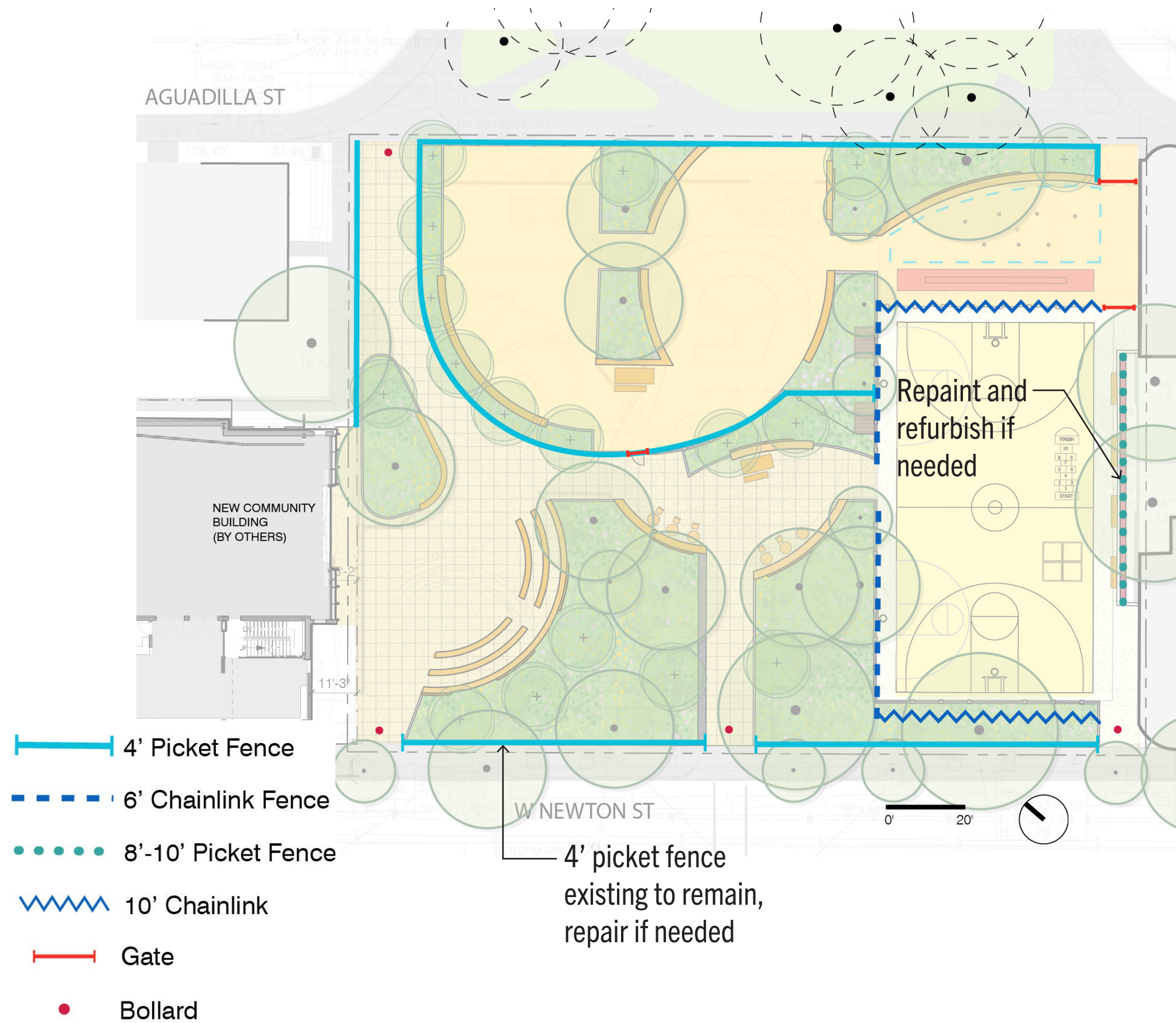


10 ft Chain Link Fence



4ft Iron Picket Fence

FENCING- PROPOSED



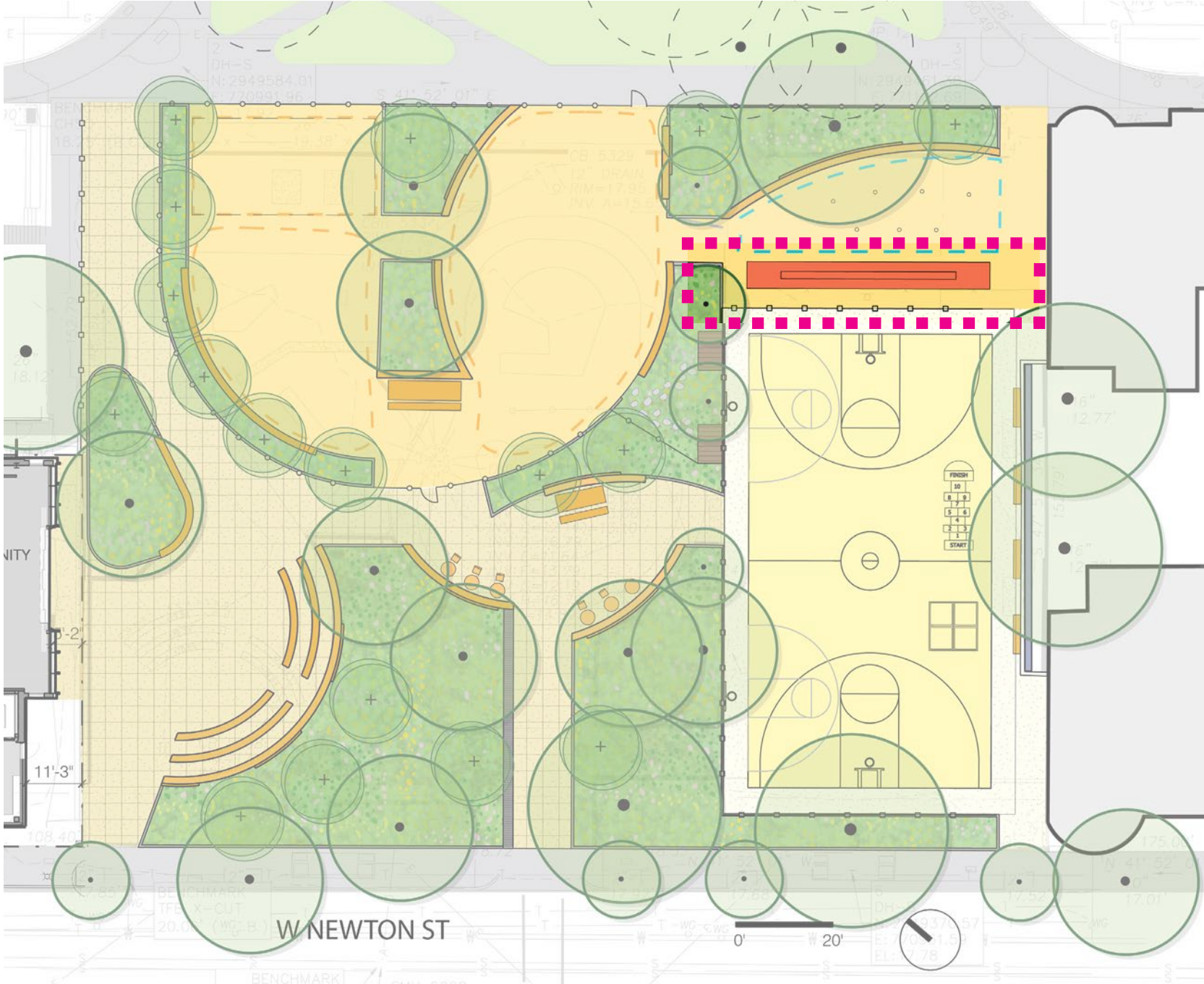
Ameristar Montage Plus Steel Fence

Available in 3', 3.5', 4', 5', 6' heights



Eastern System 21 Coated Chain Link Fence

BASKETBALL SEATING- BLEACHERS



Streetlife Solid Terrace System

Available in 29" (double tier) heights; seat width can be customized
 Most efficient module length is 9'-10"
 Available in recycled plastic slats



Cloudy Grey -
Recycled



Powder Coating

GAME TABLES AND CENTRAL GATHERING



Landscape Forms Steelhead Table
Available in perforated metal
36" and 42" diameter options
Note: Seating will be Streetlife Bench with inlay

GAME TABLES AND CENTRAL GATHERING



Streetlife Solid Series Picnic Table and Seat Top
Available in recycled plastic slats
7' 8" or 9' 10" standard table lengths with custom option
2.8" x 2.8" slats

EVENT GATHER SEAT TOPS



**Streetlife Solid Series
Top Seats**
All black composite material
16", 20", and 24" seat
depths



Cloudy Grey -
Recycled

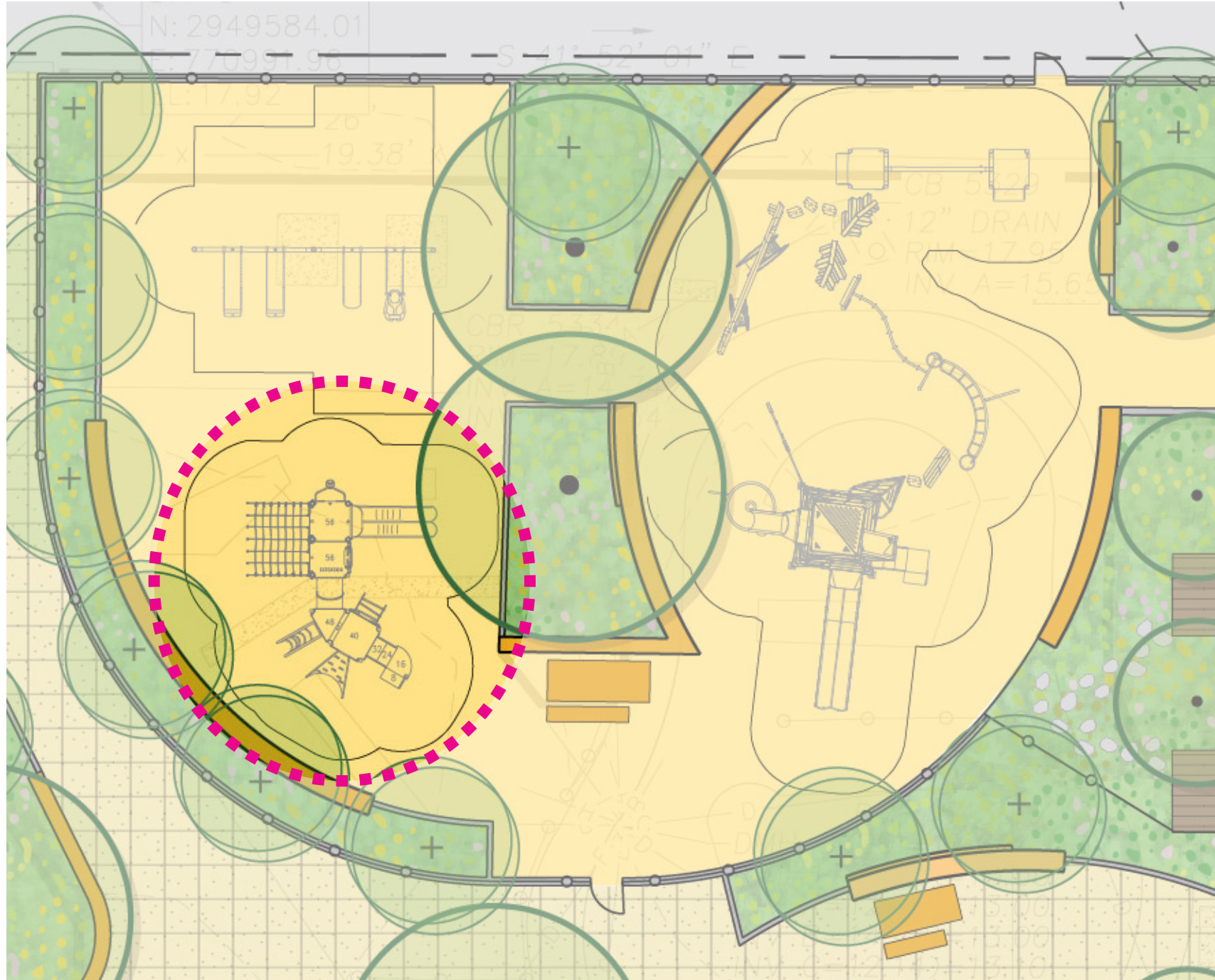
WATER FOUNTAIN



Halsey Taylor Endura II Outdoor Hydro-Boost Upper Bottle Filling Station

- Bi-Level Non-Filtered Non-Refrigerated
- Compatible with the Vortex water play system

0-5 PLAY



Note: Playground layout and equipment being reviewed and edited in collaboration with playground vendors.



Kompan
Coupe Deluxe

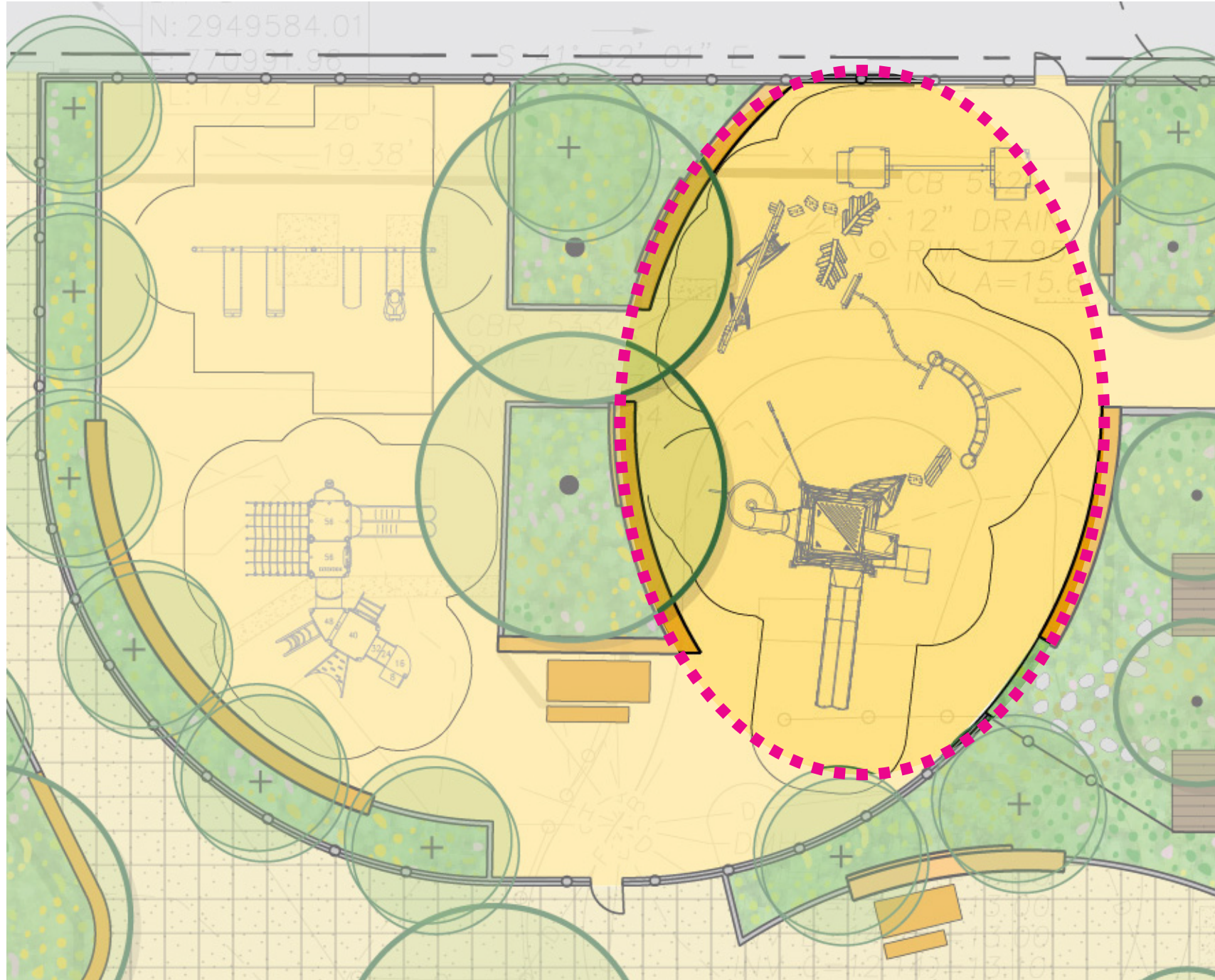


Kompan
Water Lilies
Group Springer



Kompan
Three Towers
with Net &
Bridge

5-12 PLAY



Note: Playground layout and equipment being reviewed and edited in collaboration with playground vendors.



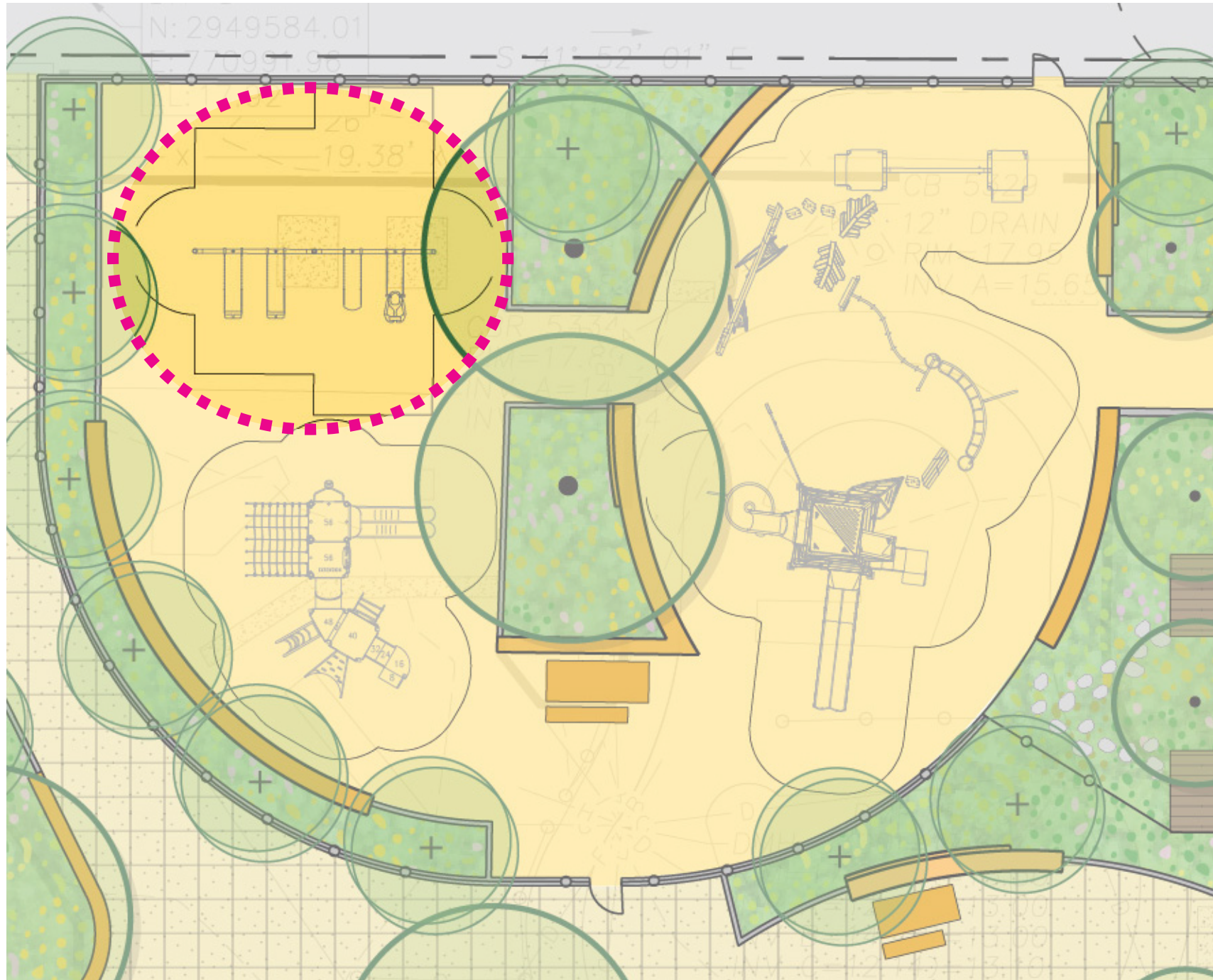
Landscape Structures
Fox Den



Landscape Structures
Alpha Tower
with Footprint Stepper,
Overhead Trekker, and
"S" Ring Bridge add ons



SWINGS



- 2 Toddler Swings
- 1 ADA Swing
- 1 Big Kid Swing

WATER PLAY



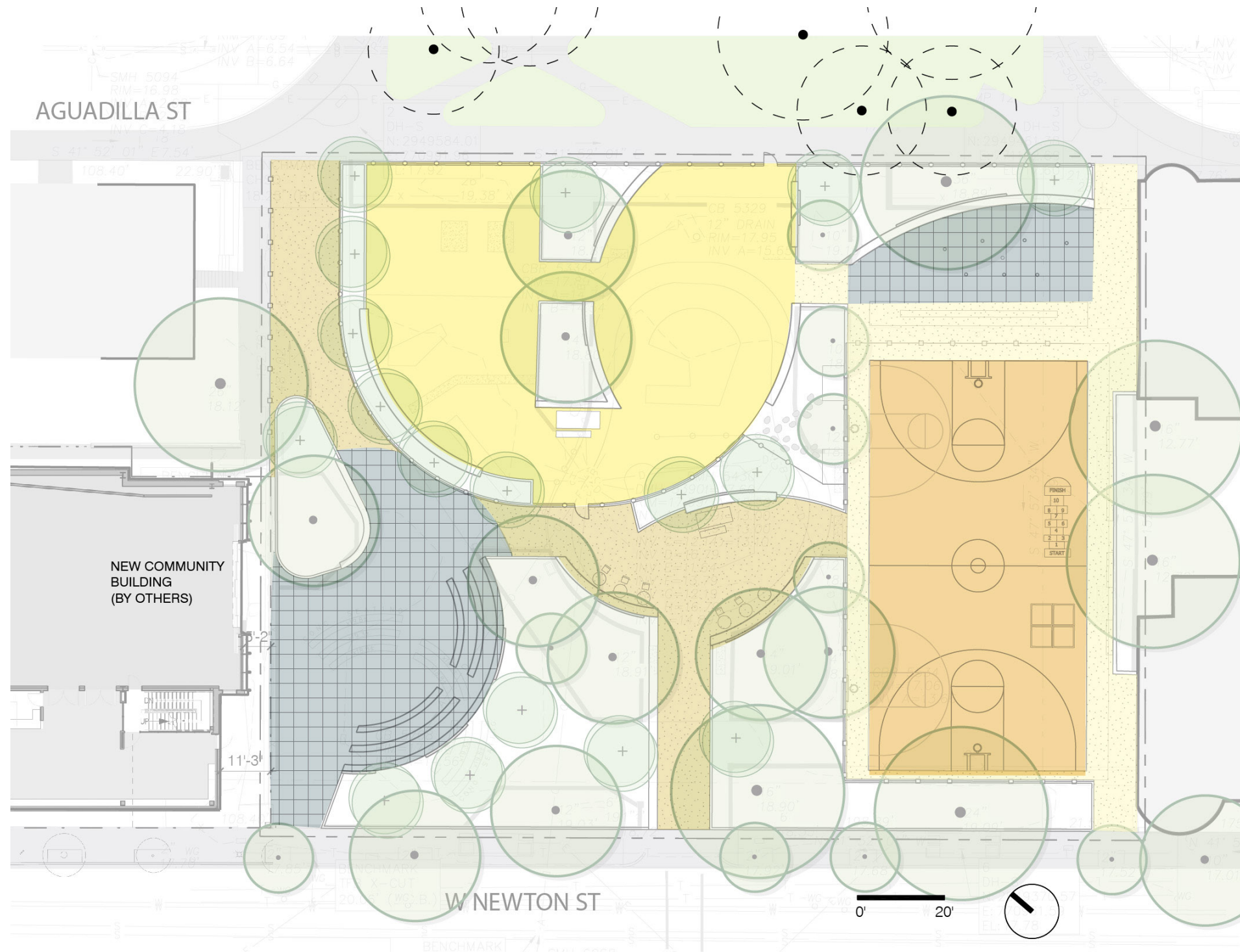
Vortex Spraylink Ground Spray Collection
Geysers in ground jet shown above

In-ground spray equipment being refined in collaboration with Vortex.

PLAY OUTLOOKS



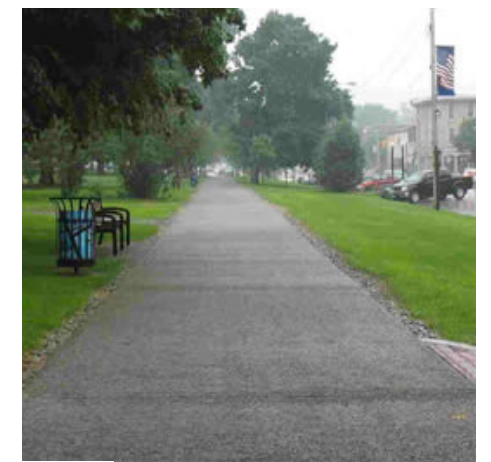
PAVING- PROPOSED



 Asphalt



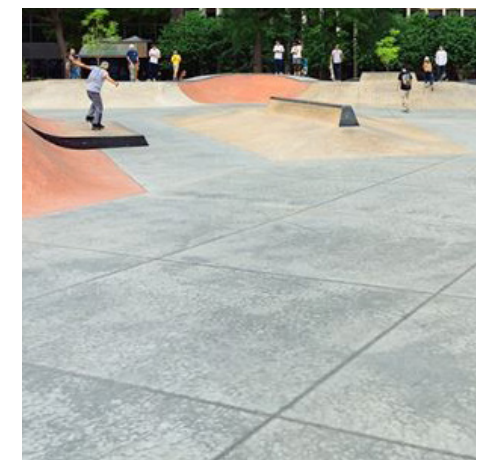
 Painted Asphalt



 Permeable Asphalt

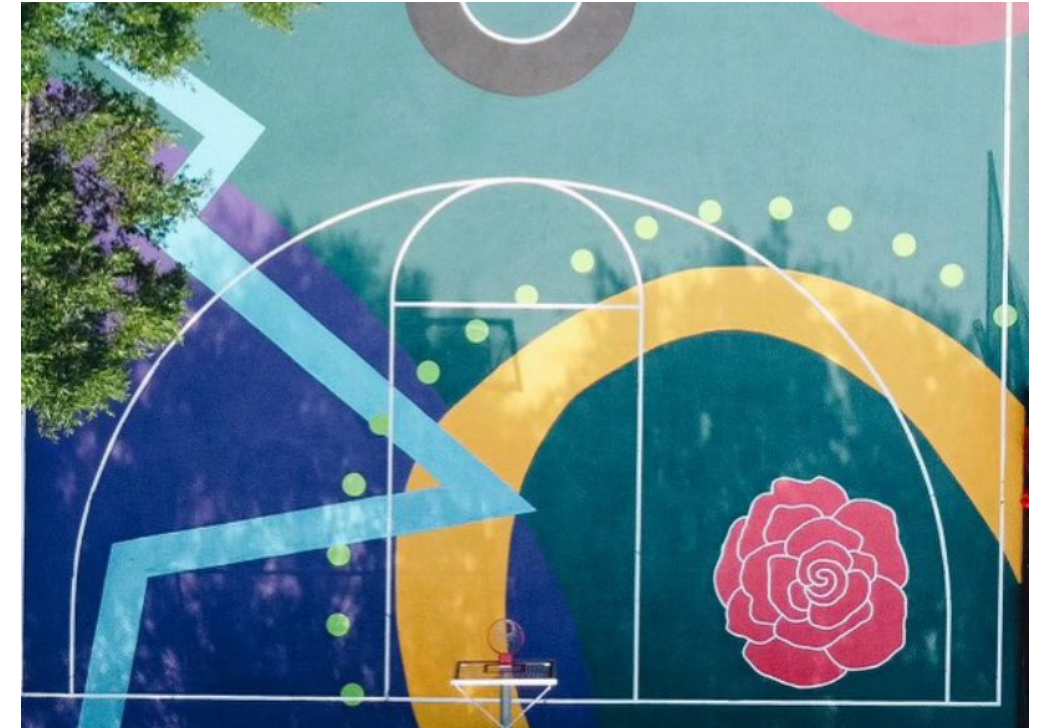


 Rubber Play Surfacing

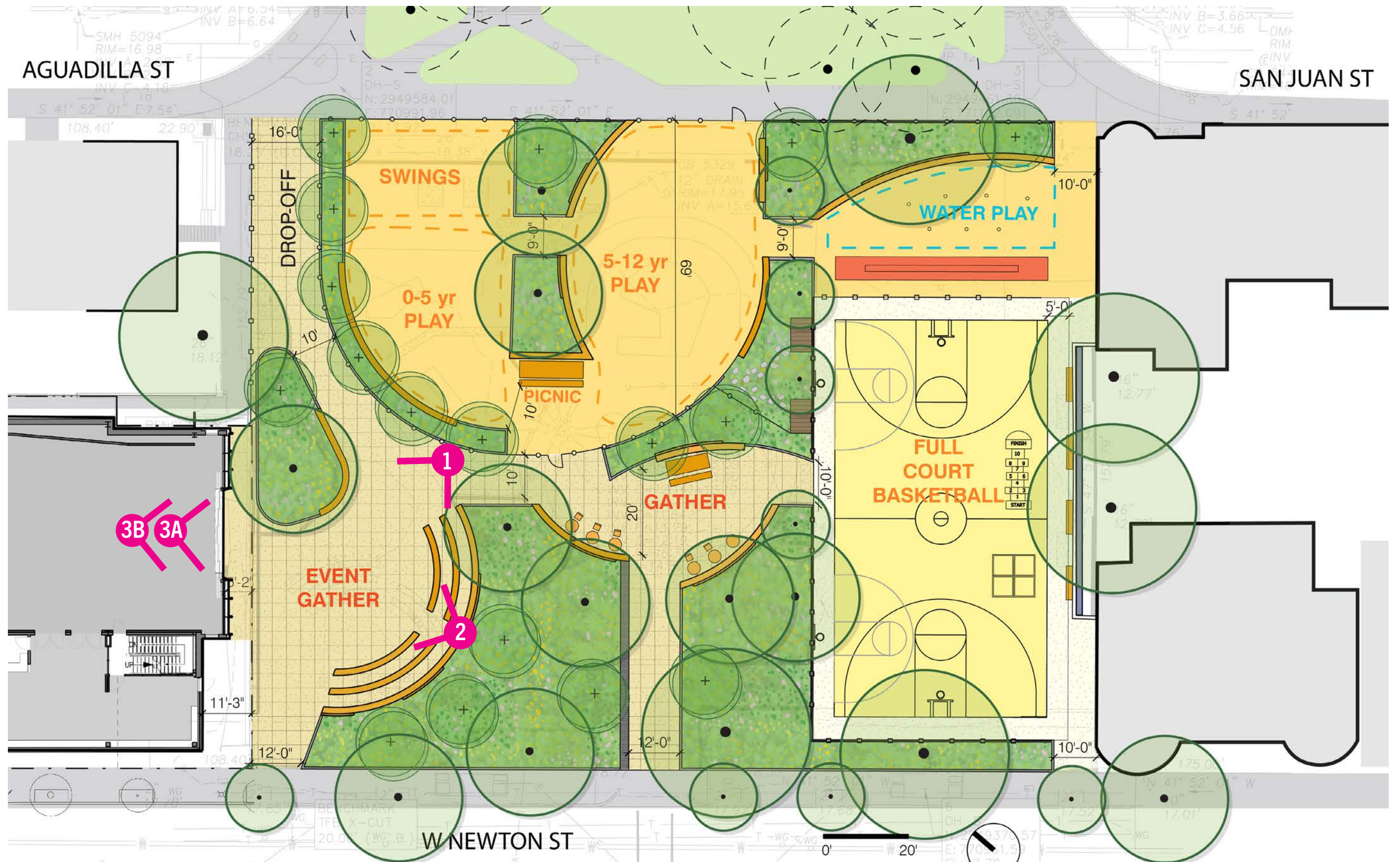


 Concrete

BASKETBALL COURT



EVENT GATHER AREA



1. EVENT GATHER AREA : FROM PARK



2. EVENT GATHER AREA: FROM SEATING



3A. EVENT GATHER AREA: FROM MULTI-PURPOSE ROOM



3B. EVENT GATHER AREA: FROM MULTI-PURPOSE ROOM DURING MUSIC FESTIVAL



THANK YOU!



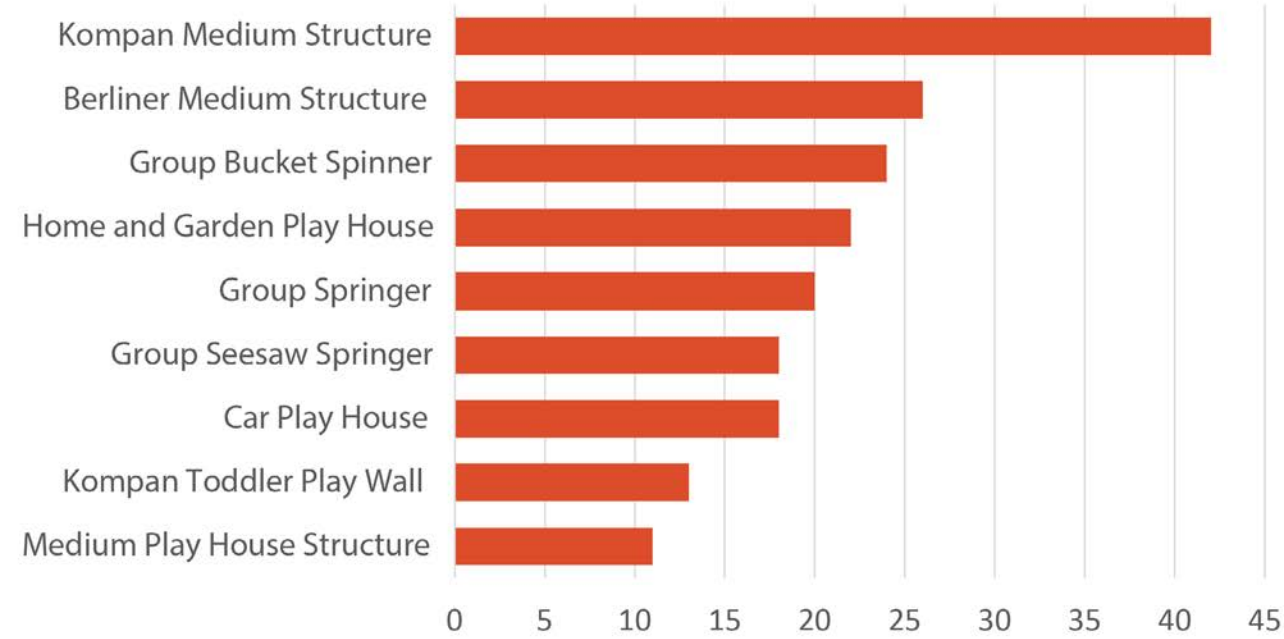
If you have any further questions please contact Lauren Bryant at lauren.bryant@boston.gov, 617-961-3019

COMMUNITY OUTREACH

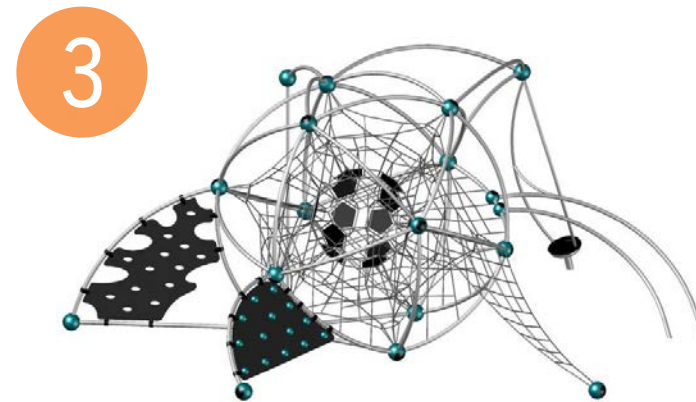
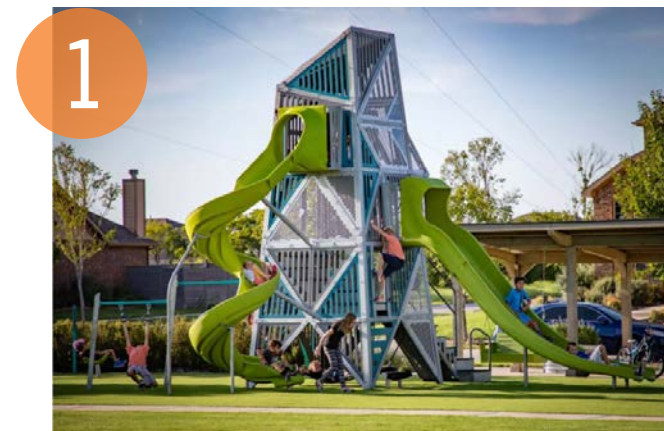
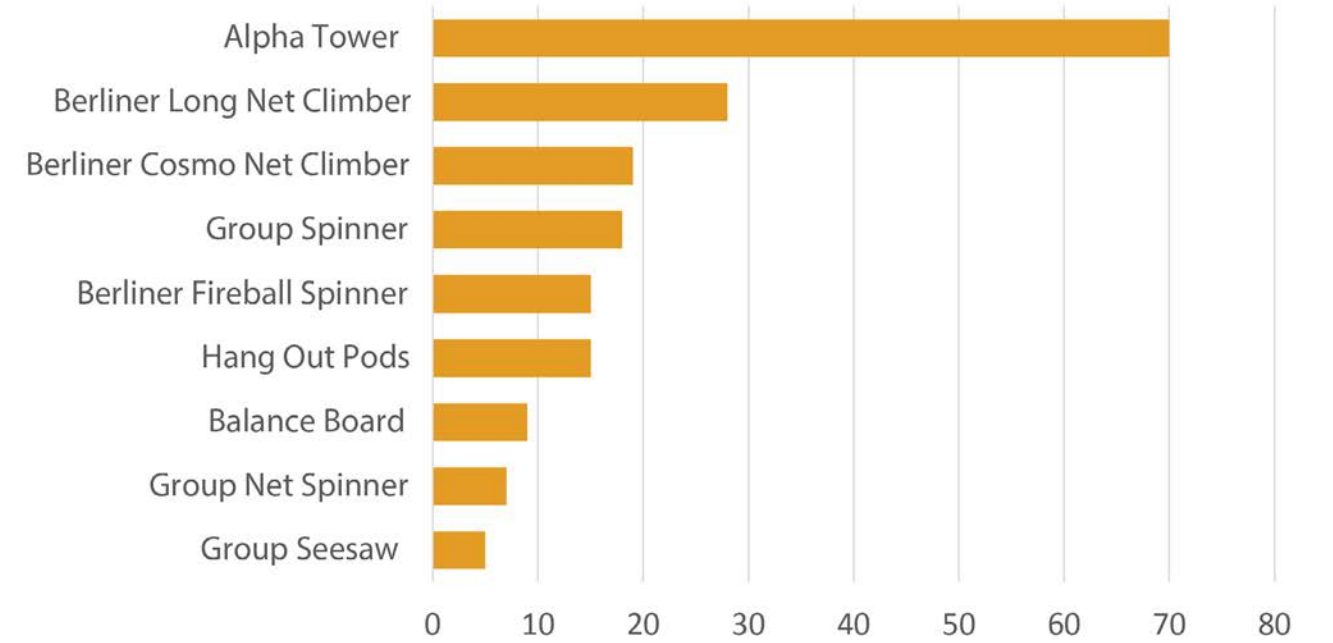
APPENDIX

Results gathered from Intercept Survey Boards and IBA Programs

Preferred 0-5 Play Pieces



Preferred 5-12 Play Pieces



COMMUNITY OUTREACH

Results gathered from Intercept Survey Boards and IBA Programs

APPENDIX

SWINGS- TOP 2 CHOICES



48 Votes
2 Toddler Swings
1 ADA Swing
1 Big Kid Swing



28 Votes
2 Toddler Swings
1 Friendship Swing

WATER PLAY



Top Choice
In Ground Jets

