

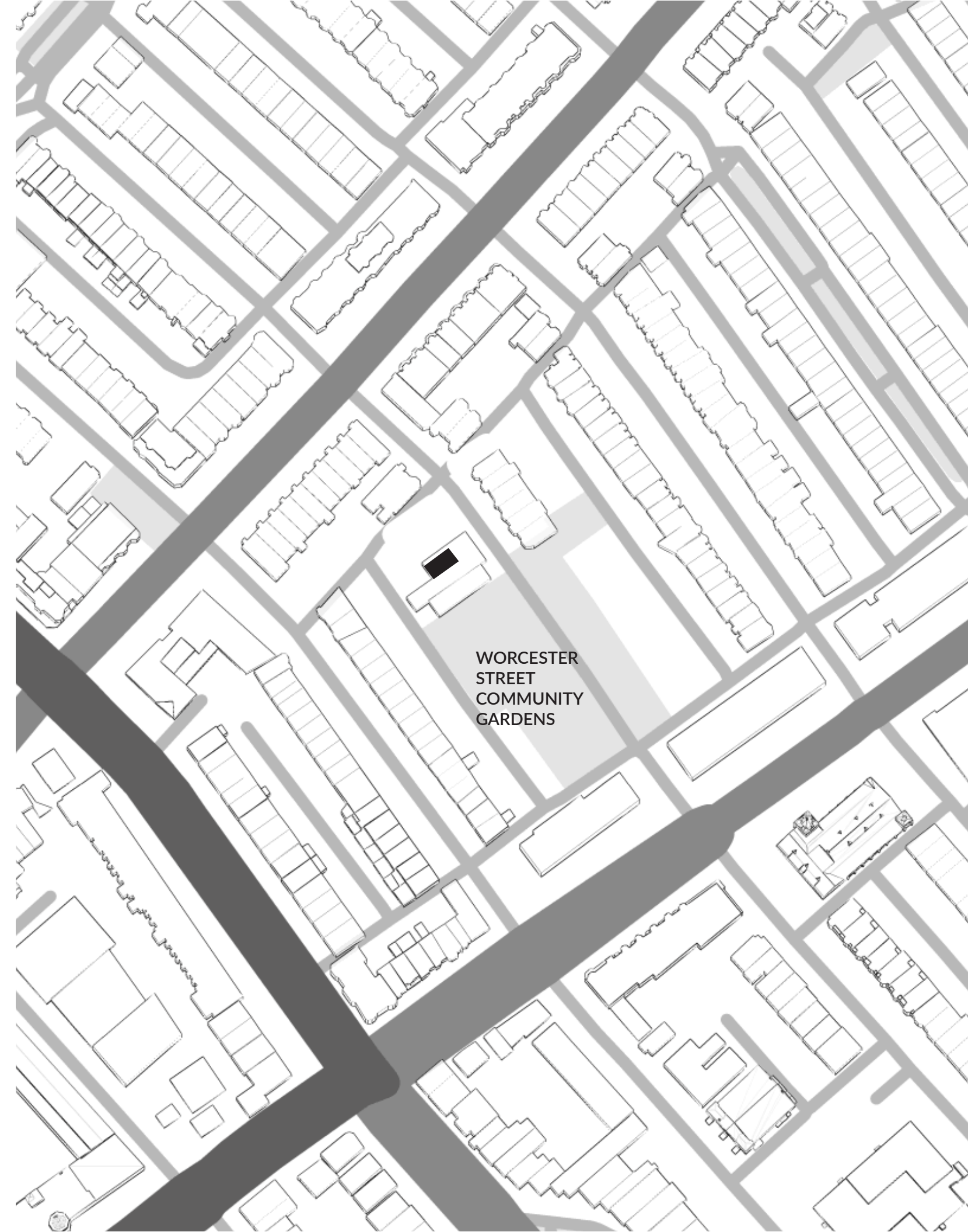
144 WORCESTER STREET



144 WORCESTER STREET

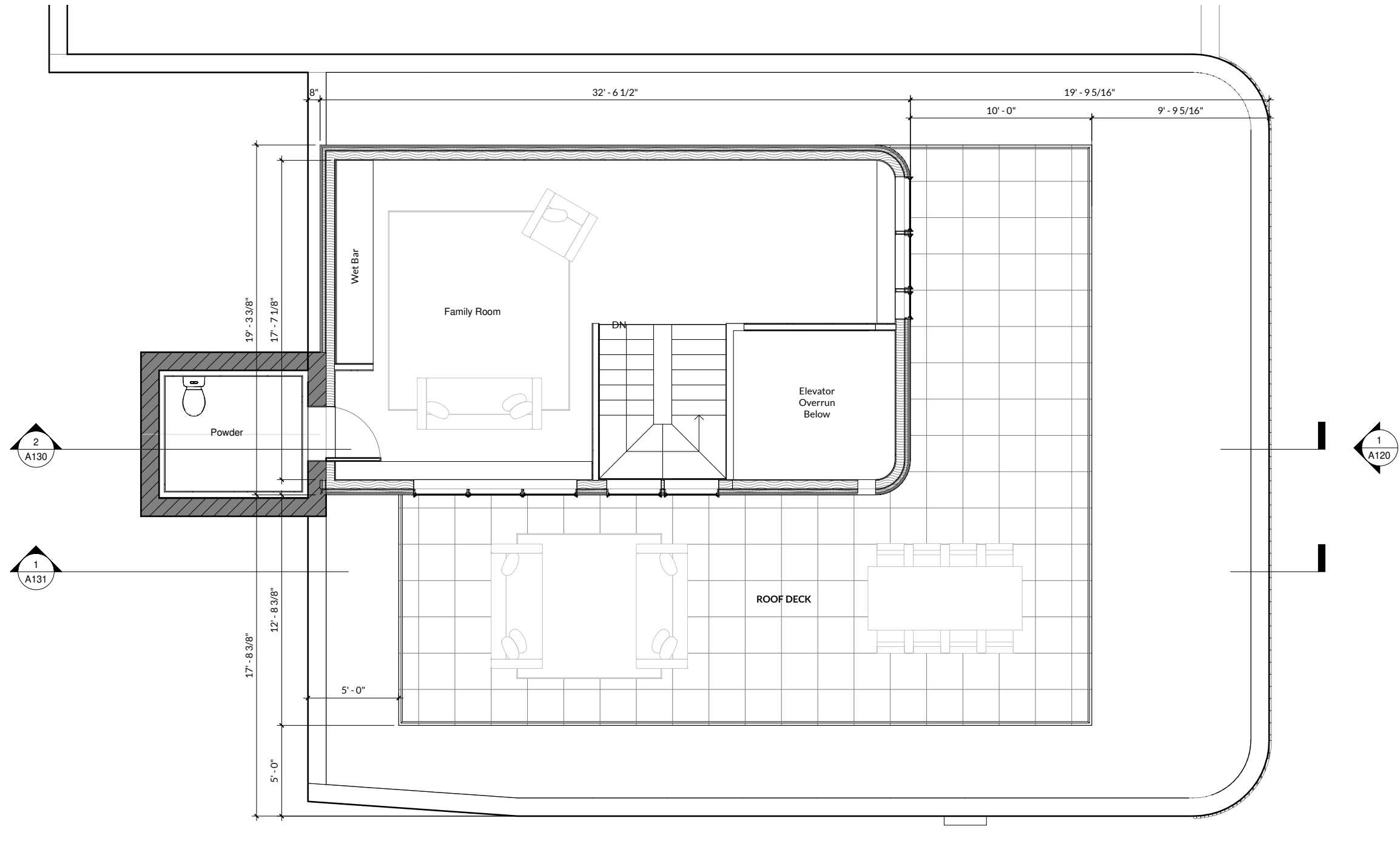
DESCRIPTION OF PROPOSED WORK

Proposed project is a private roof top addition to a 4-story building in South End totalling 625 sq.ft and would serve as additional living space for the unit below and access to the proposed private roof deck. Proposed roof deck to comply with all setback requirements to ensure minimal visibility is achieved. Proposed addition will comply with Zoning Ordinance's height requirements and be 3' higher than existing enclosed fire escape. Addition would also serve to hide elevator overrun that terminates at the floor below. Proposed addition to be contemporary and not clash with existing building architectural language.



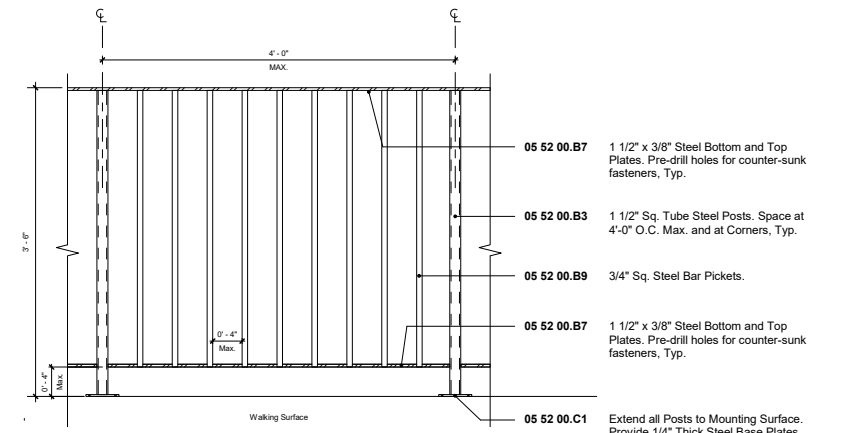
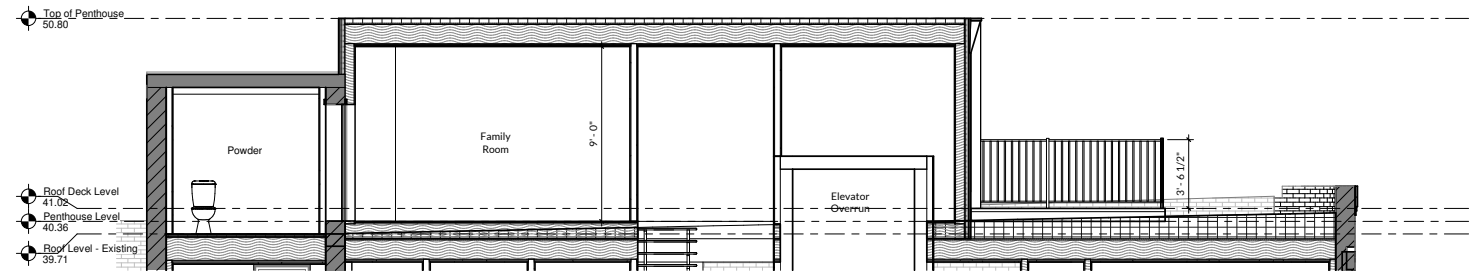
SQUARE FOOTAGE

Usable	458 sq.ft.
Circulation/Stairs	64 sq.ft.
Elevator Overrun	80 sq.ft.



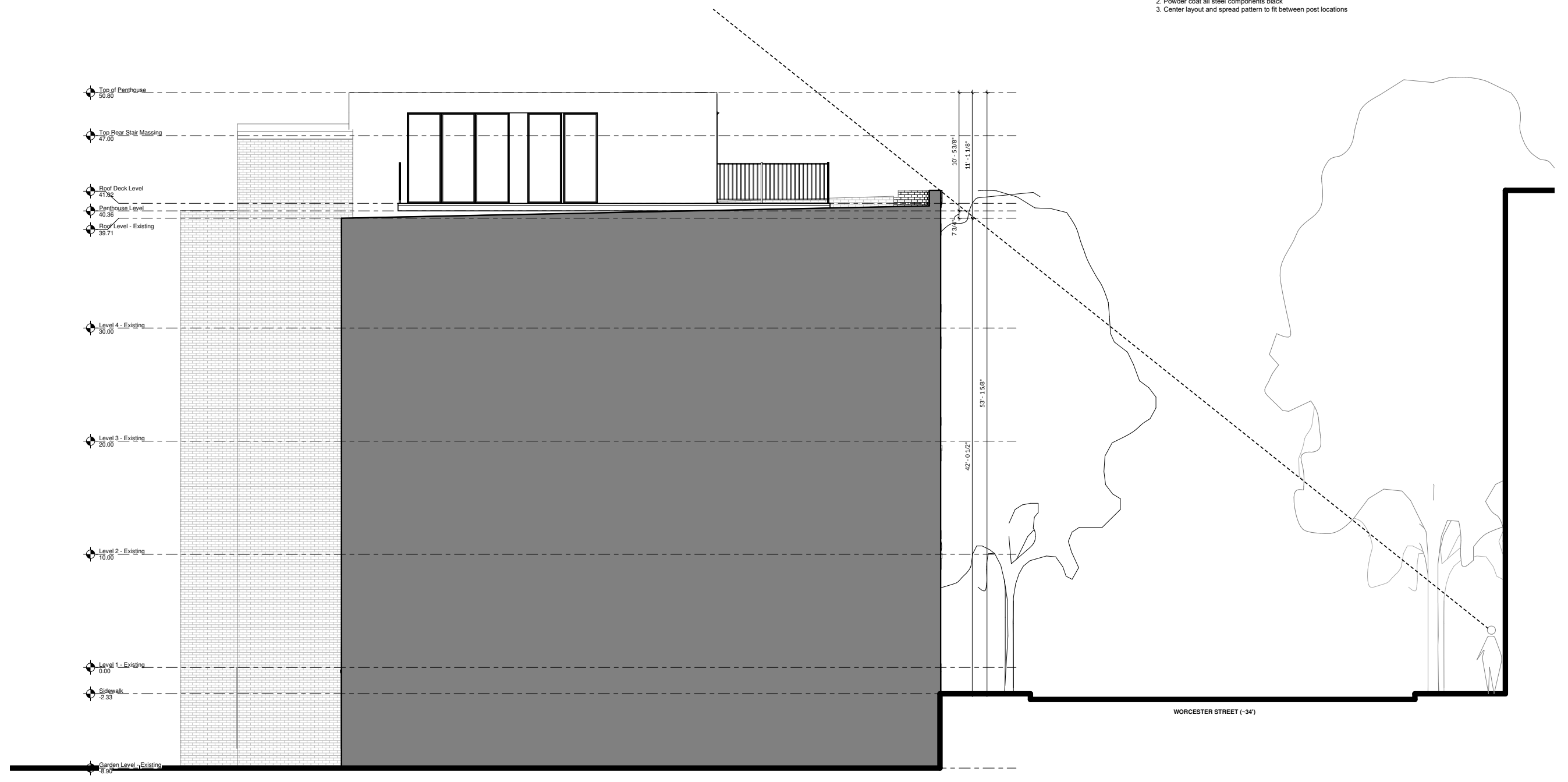
Addition is positioned back and away from south elevation to minimize visibility.
 Deck will be composite decking or wood deck tiles with black metal picket railing 3'6" off of deck.
 See additional details on the following pages.

144 WORCESTER STREET
SECTIONS



- RAILING NOTES:**
1. Grind all welds smooth
 2. Powder coat all steel components black
 3. Center layout and spread pattern to fit between post locations

- 05 52 00.B7 1 1/2" x 3/8" Steel Bottom and Top Plates. Pre-drill holes for counter-sunk fasteners, Typ.
- 05 52 00.B3 1 1/2" Sq. Tube Steel Posts. Space at 4'-0" O.C. Max. and at Corners, Typ.
- 05 52 00.B9 3/4" Sq. Steel Bar Pickets.
- 05 52 00.B7 1 1/2" x 3/8" Steel Bottom and Top Plates. Pre-drill holes for counter-sunk fasteners, Typ.
- 05 52 00.C1 Extend all Posts to Mounting Surface. Provide 1/4" Thick Steel Base Plates with pre-drilled holes for counter-sunk fasteners





EXISTING



PROPOSED



1
NOT VISIBLE



2
PARTLY VISIBLE
Visibility on Worcester Street starts around 100 feet away from building during the winter seasons.

