



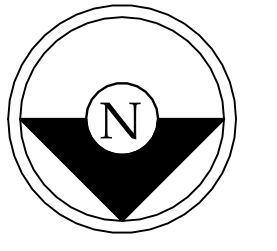
339 Commonwealth Avenue
View of Rear Facade



339 Commonwealth Avenue
View of Vestibule



339 Commonwealth Avenue
View of Existing Vestibule



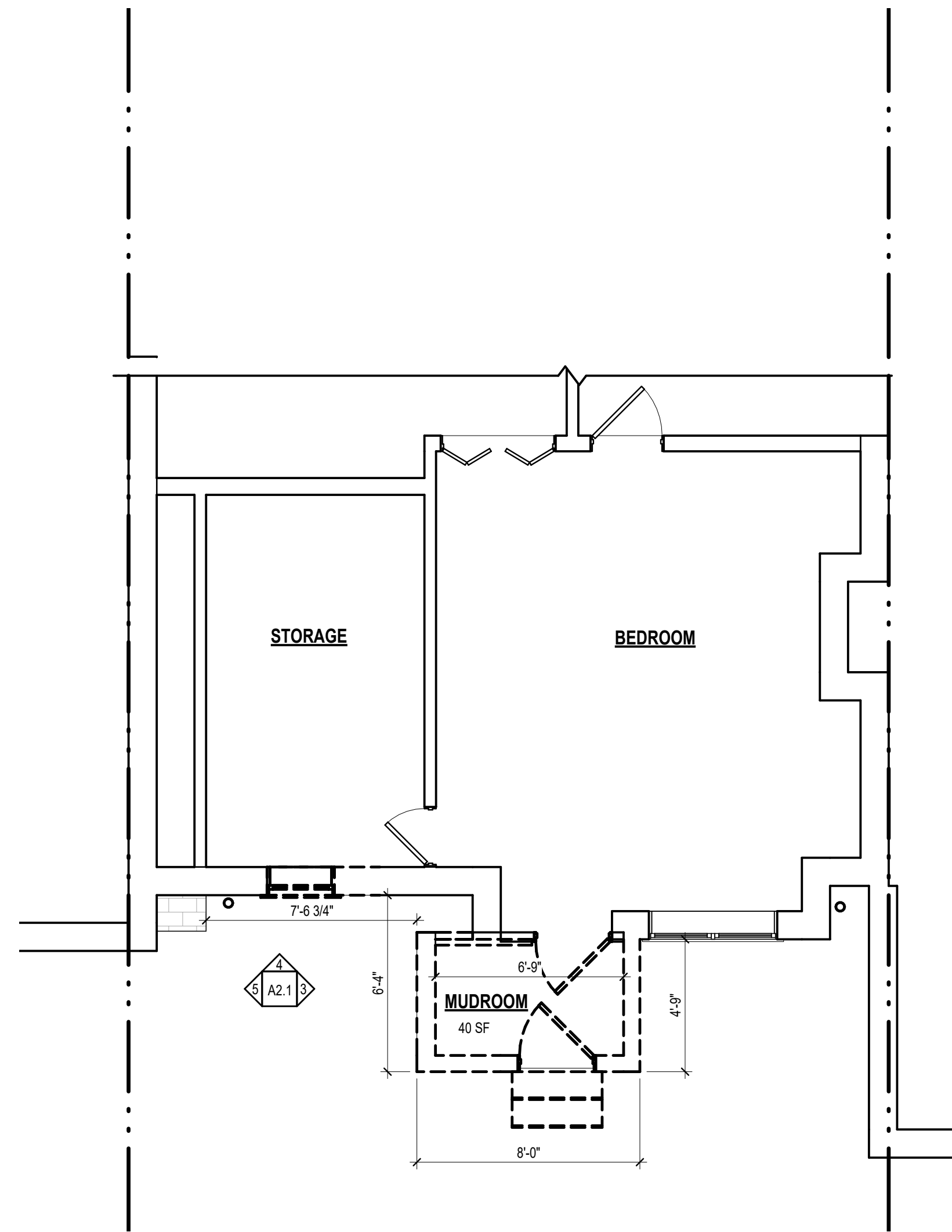
REV.	DATE	DESCRIPTION	AUTHOR

PROJECT STATUS

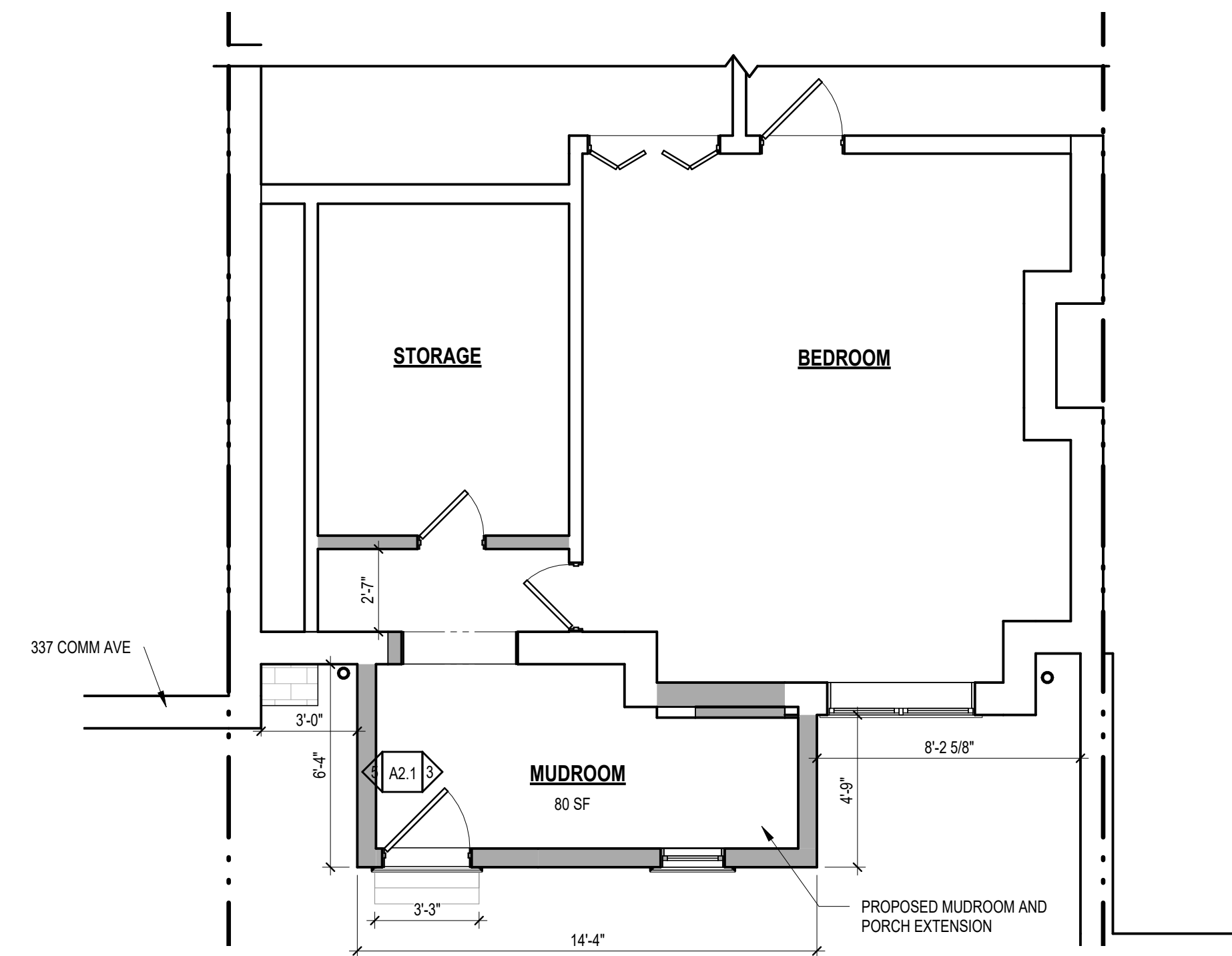
PARTIAL FLOOR PLANS
DEMOLITION AND PROPOSED

339 Commonwealth Ave
Boston, MA 02116

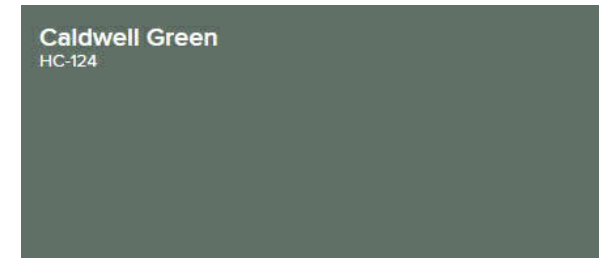
A1.1



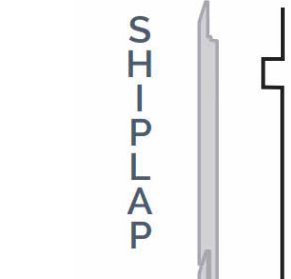
3 PARTIAL BASEMENT DEMO
1/4" = 1'-0"



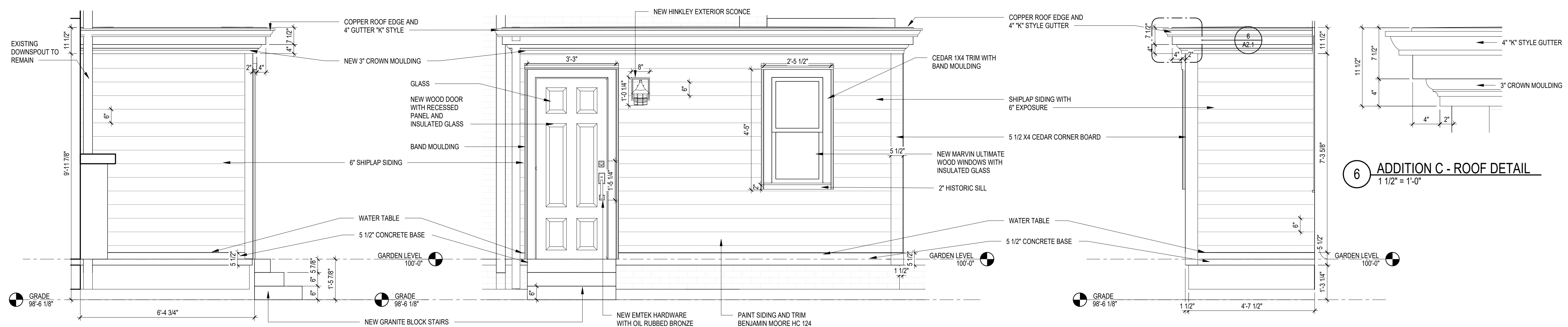
1 PARTIAL BASEMENT PROPOSED
1/4" = 1'-0"



6 SIDING AND TRIM BENJAMIN MOORE PAINT COLOR



7 SHIPLAP SIDING



3 ADDITION A
1/2" = 1'-0"

4 ADDITION B
1/2" = 1'-0"

5 ADDITION C
1/2" = 1'-0"

6 ADDITION C - ROOF DETAIL
1 1/2" = 1'-0"



2 PROPOSED NORTH ELEVATION
1/4" = 1'-0"



1 NORTH EXISTING-
1/4" = 1'-0"

Timothy Burke
ARCHITECTURE
142 BERKELEY STREET, BOSTON MASSACHUSETTS 02116
P. 617.266.1532 | W. timothyburke.net | F. 617.266.1116

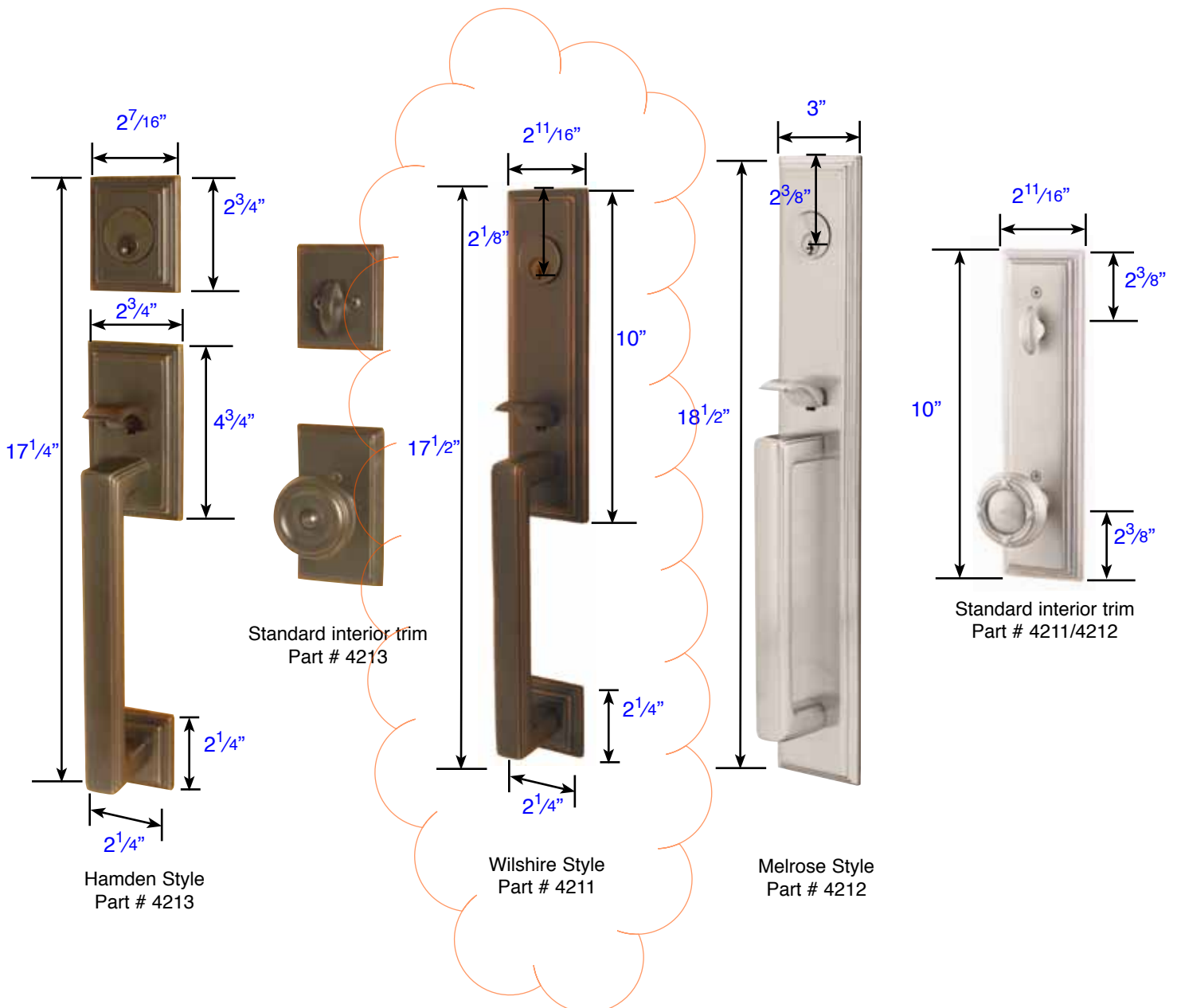
DATE	REV.	DESCRIPTION
01/01/2016		Drawn By: AUTHOR
		DATE
		DESCRIPTION

PROJECT STATUS

ELEVATIONS

339 Commonwealth Ave
Boston, MA 02116

A2.1



Additional Dimensions: (Part # 4213/4211/4212)

- Exterior Projection is $2\frac{5}{8}$ "
- Interior Projection Depends on Handle Style
- Overall Grip thickness: 1"
- Clearance between door & grip is $1\frac{3}{8}$ "
- Standard Interior trim dimensions same as 8468, 8368, 8121
- Plates thickness: $\frac{1}{2}$ "

Same Dimensions for Dummy Function



FREEPORT

1804BK

MEDIUM WALL MOUNT LANTERN

Freeport features a classic New England design in cast aluminum construction for timeless, traditional style.

DETAILS	
FINISH:	Black
MATERIAL:	Cast Aluminum
GLASS:	Clear Seedy

DIMENSIONS	
WIDTH:	8"
HEIGHT:	12.3"
WEIGHT:	4 lbs.

LIGHT SOURCE	
LIGHT SOURCE:	Socket
WATTAGE:	1-100w Med.
VOLTAGE:	120v

SHIPPING	
CARTON LENGTH:	11"
CARTON WIDTH:	10"
CARTON HEIGHT:	14.4"
CARTON WEIGHT:	4.6 lbs.

PRODUCT DETAILS:

- Suitable for use in wet (interior direct splash and outdoor direct rain or sprinkler) locations as defined by NEC and CEC. Meets United States UL Underwriters Laboratories & CSA Canadian Standards Association Product Safety Standards
- 2 year finish warranty
- Classic lines and heritage details complement traditional architecture
- Striking black finish enhances design