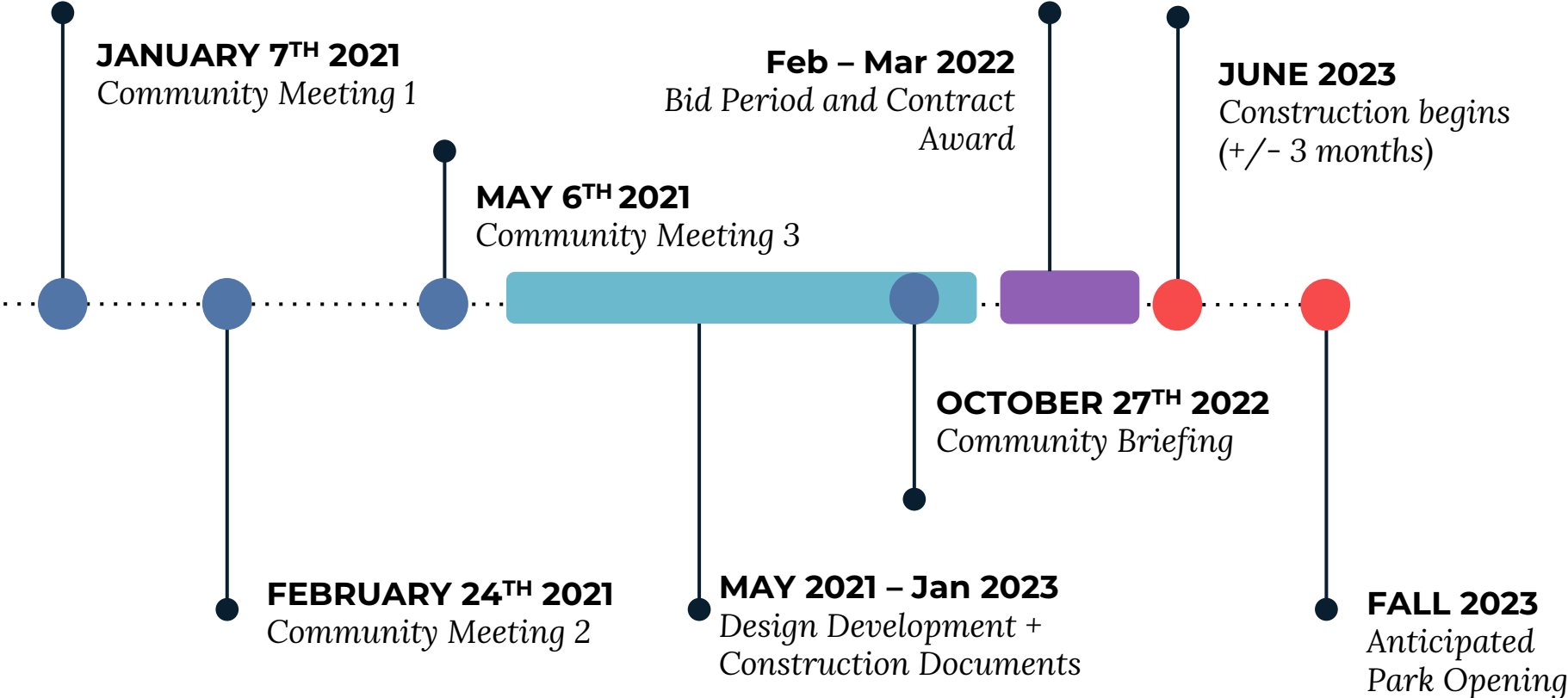


*Improvements to*  
**CLARENDON STREET  
PLAYGROUND**

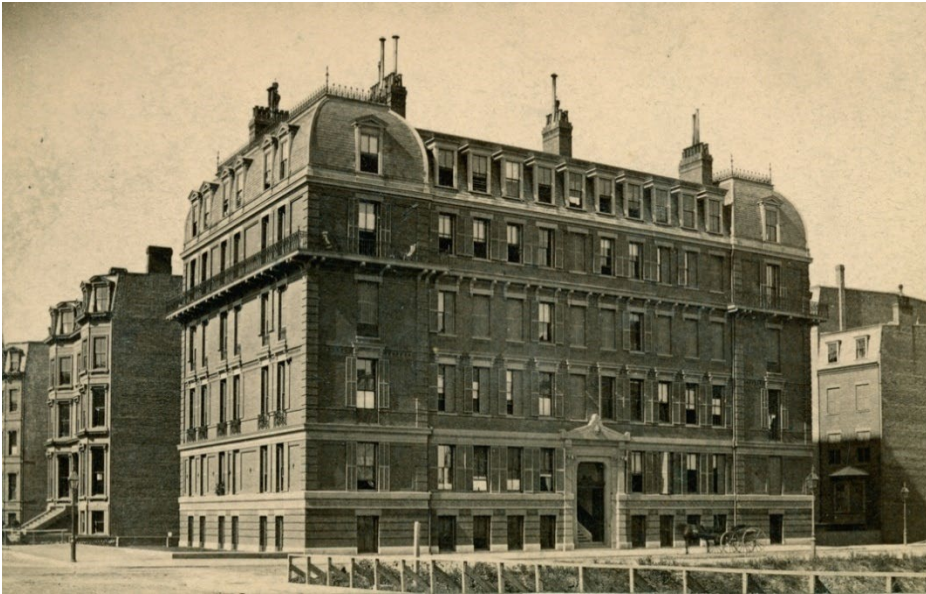


# PROJECT SCHEDULE & FUNDING

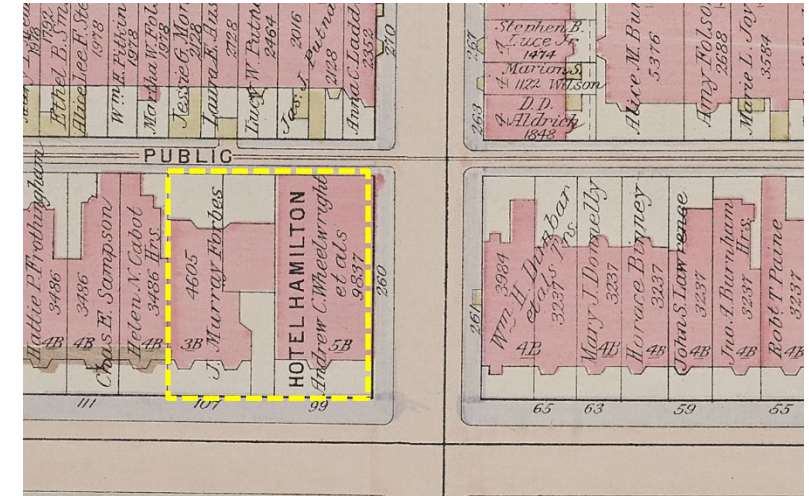
\$ 1,237,000 Capital Funding



# SITE HISTORY



260 Clarendon (ca. 1873), courtesy of the Bostonian Society

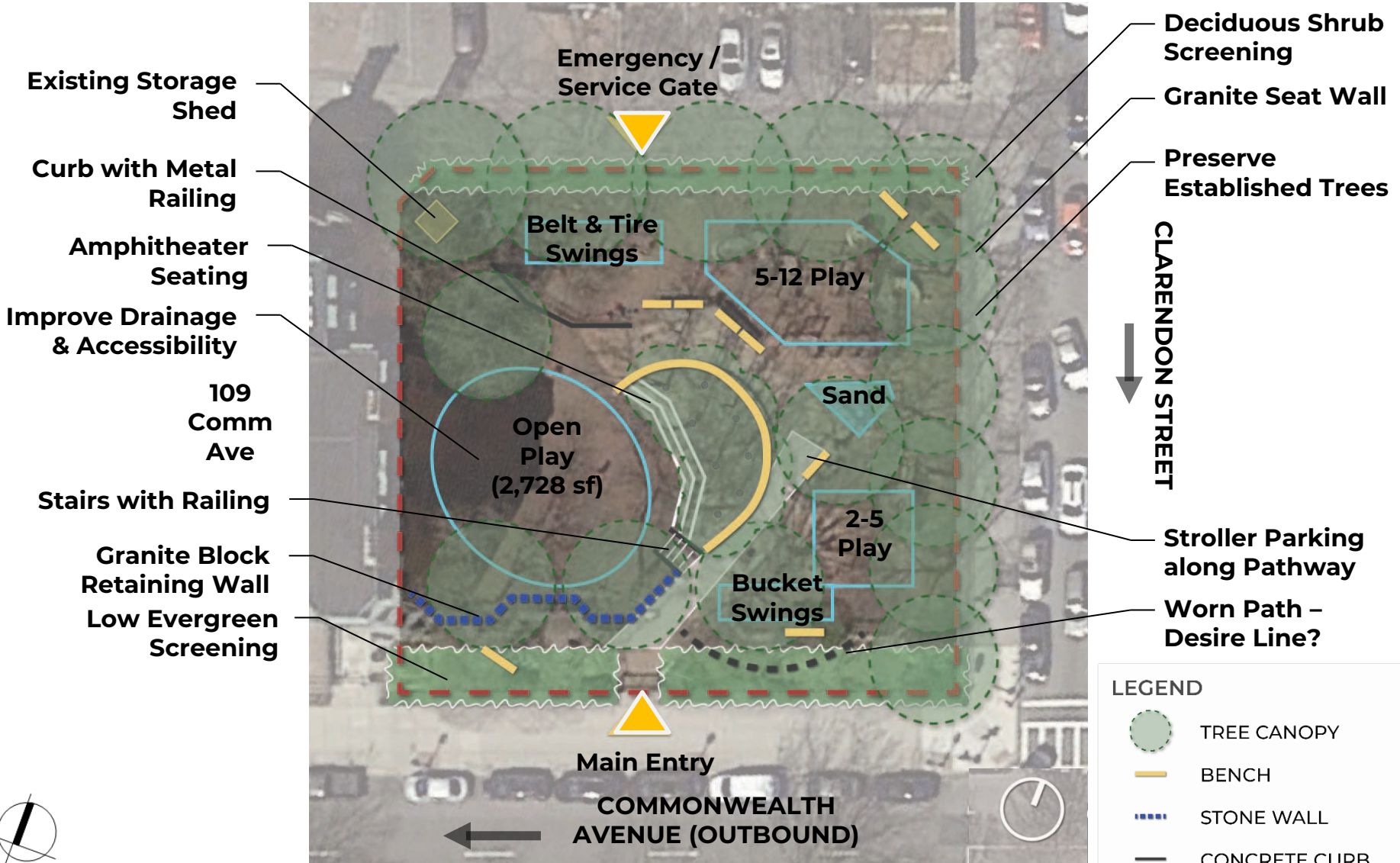


Atlas of the city of Boston, Boston proper and Back Bay : from actual surveys and official plans. plate 20, 1922, courtesy of Digital Commonwealth

North side of Commonwealth looking east, with 109-111 Commonwealth in foreground on left Commonwealth (ca. 1890); courtesy of Barry and Judith Solar

# OVERALL SITE ANALYSIS

PUBLIC ALLEY 424



# EXISTING CONDITIONS

---



# EXISTING CONDITIONS

---



# EXISTING CONDITIONS

---



# WHAT WE HEARD

The **service gate/emergency access along the alley can be shifted**. It does not need paved access into the park. Add clear signage.

## PARK AMENITIES

Modify the fence to mitigate head entrapment issues.

Add low level lighting for use in early evenings

Add a community bulletin board

City kids have little access to nature itself, so keeping the existing **natural elements - vegetation, trees, ground level discovery areas as tactile play - is critical**.

Kids of all ages use the park and the local schools bring students to the park on a coordinated schedule for play. **The play equipment needs to be able to handle rigorous use from all ages** and construction should work around the school year schedule.

## PLANTINGS & AESTHETICS

Ensure all plantings are hardy and protected.

**“Preserve the flavor of the playground”** – the park’s aesthetic should fit seamlessly into the neighborhood (e.g. natural color scheme, green and open)

## PLAY VALUE

**Maximize the play value** of the space. Musical instruments and water play were not endorsed.

## OPEN PLAY

**Keep open play separated and at the lower level. Maintain as large an area for open play as possible.** Keep 2-5 year and 5-12 year play separated.

The **open play area is extremely important and central to this space** as a freeform play area and community space for neighborhood events.



# PREFERRED PLAN MATERIALS

---



Poured-in-place (PIP)  
Rubber Surfacing



Concrete

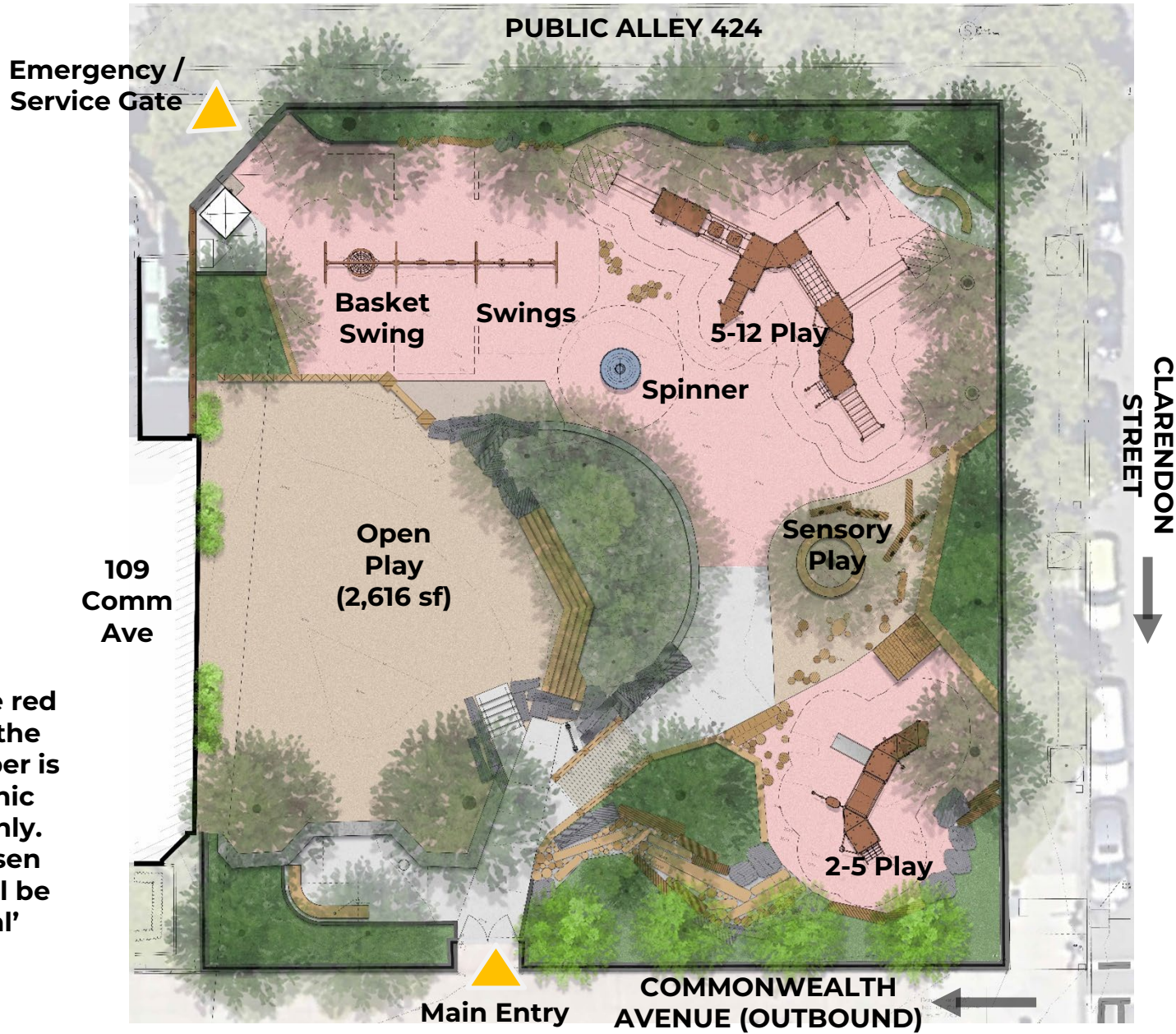


Engineered Wood Fiber Mulch



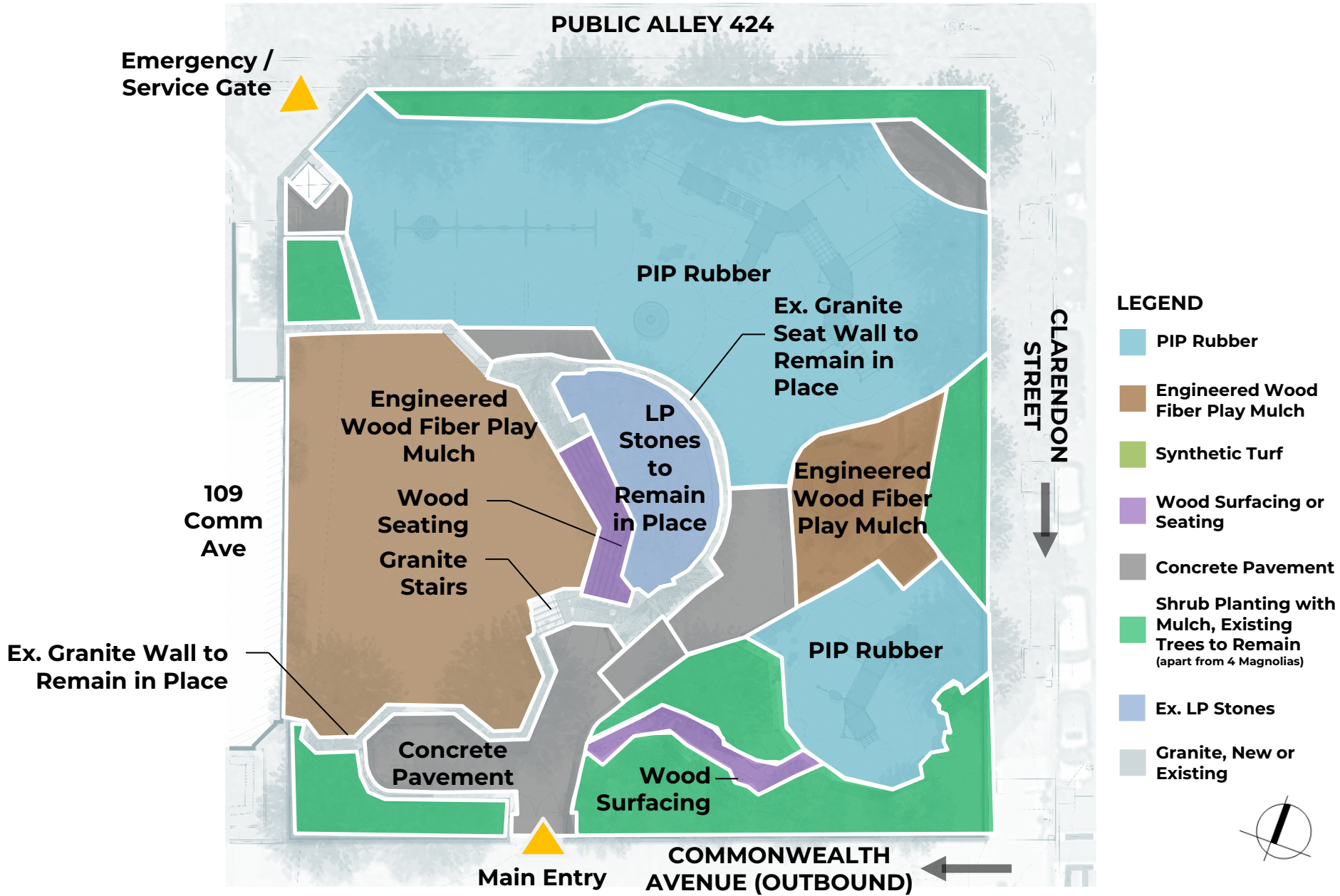
Wood Surfacing

# PREFERRED PLAN, 2022



Note the red color of the PIP rubber is for graphic clarity only. The chosen color will be a 'natural' green or brown

# PREFERRED PLAN - SURFACING



# PREFERRED PLAN – SEATING AREAS

PUBLIC ALLEY 424

Emergency /  
Service Gate



Informal Boulder  
or Log Seating

Curved Benches  
(3 total)

Granite Seat Wall  
to Remain

Timber Seat Wall

109  
Comm  
Ave

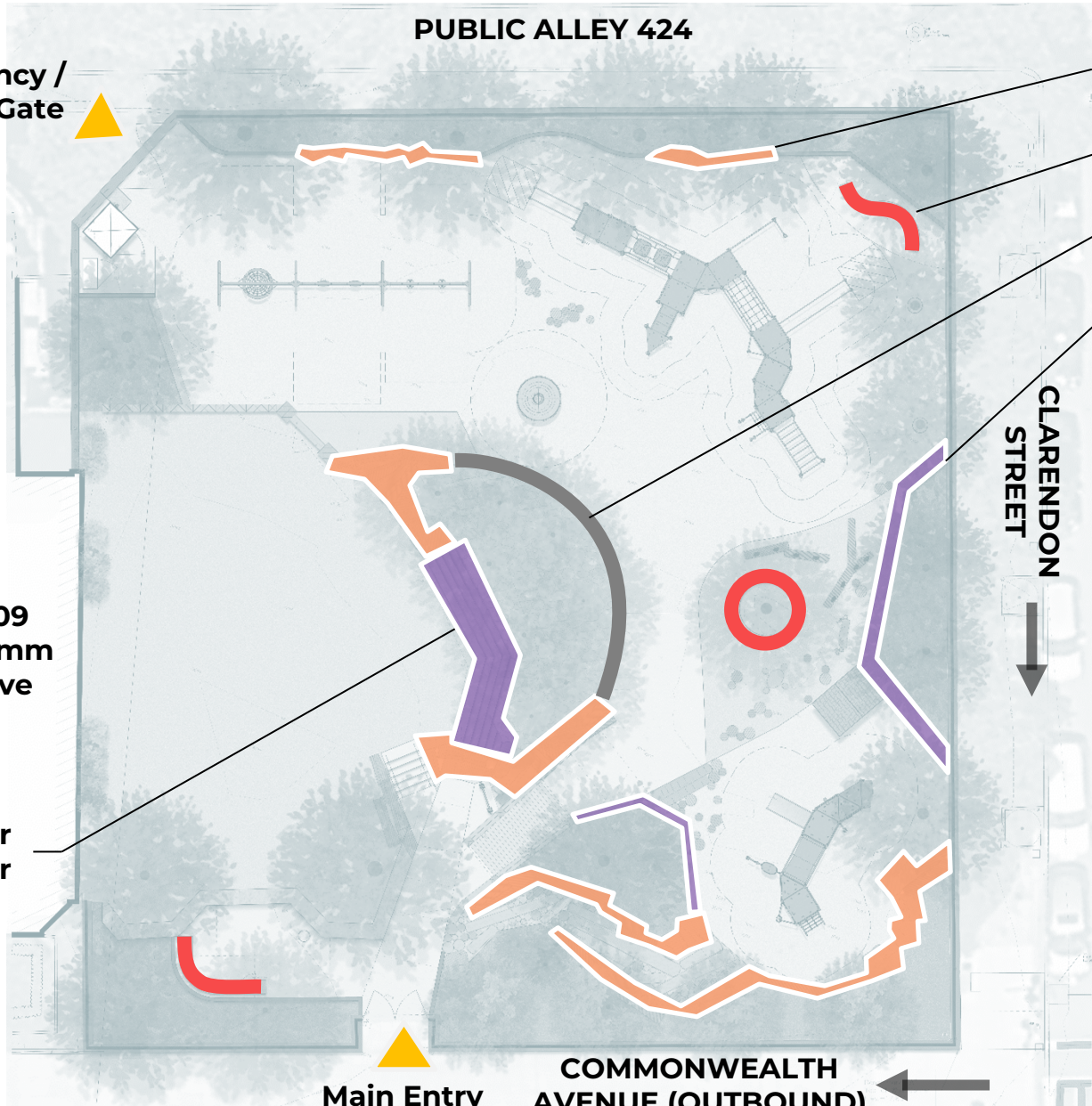
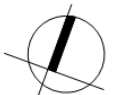
CLARENDON  
STREET



Timber  
Amphitheater

Main Entry

COMMONWEALTH  
AVENUE (OUTBOUND)



# PERIMETER FENCE & GATE MODIFICATION

---



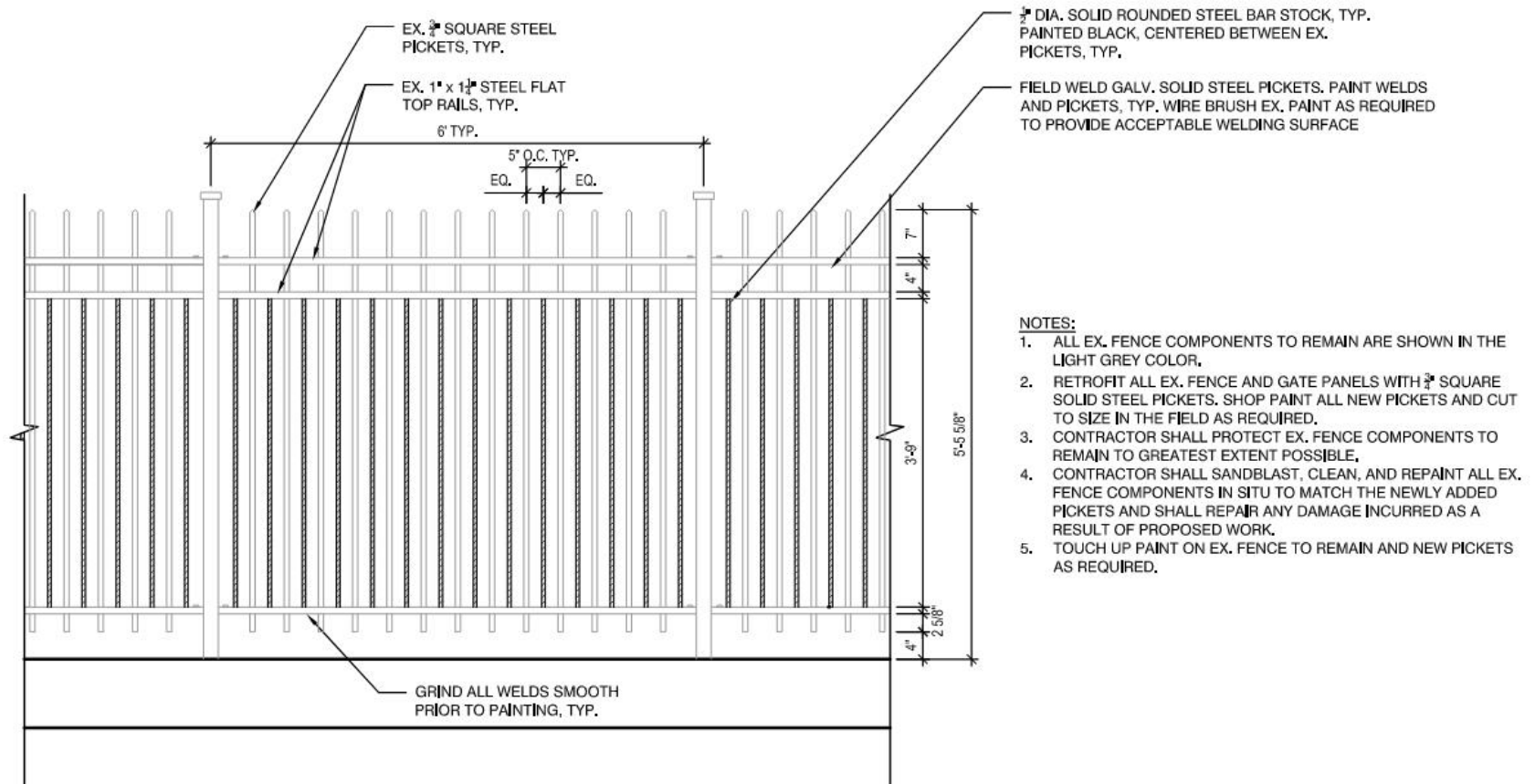
Existing  
Perimeter  
Fence



Modified  
Condition



# PERIMETER FENCE & GATE MODIFICATION



# EXISTING PLANTING PALETTE

---



Star Magnolias (*M. stellata*) -  
Replace Removals along Comm Ave in Kind



Deciduous Canopy Trees (Pears pictured)  
In Playground Interior

Perimeter Shrub Planting  
Yews pictured along Comm Ave

# UNDERSTORY PLANTING PALETTE

---



**Arctic Fire Dogwood**  
White Flowers – Red Branches



**Variegated Red Twig Dogwood**  
Variegated Leaves – Red Branches



**Creeping Juniper**  
Evergreen – Blue Berries – Creeping Form



**Siberian Cypress**  
Evergreen – Creeping Form



**Gro-Low Fragrant Sumac**  
Fall Color – Red Berries – Creeping Form



**Blue Star Juniper**  
Evergreen – Blue Berries – Dwarf



# 2-5 Yr. Play Structure - Kompan

---



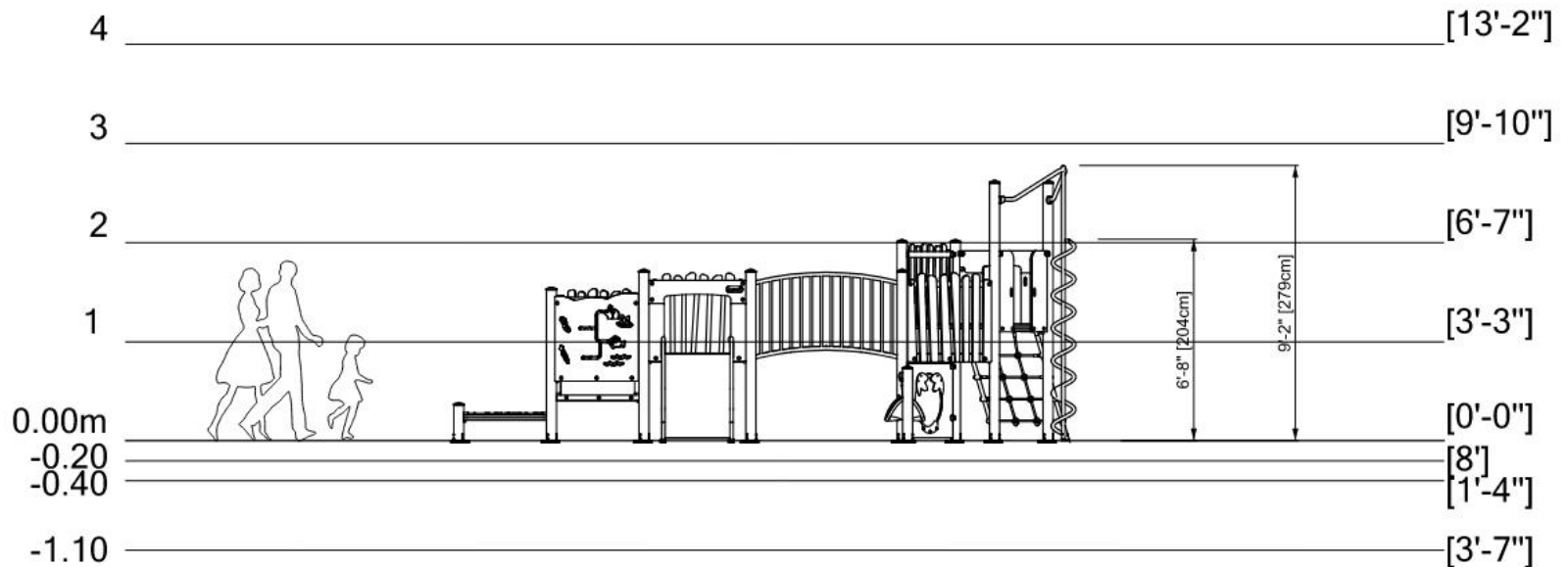
Example Aesthetic



# 2-5 Yr. Play Structure - Kompan

Max. fall height: 204 cm / 6'-8"

Total height: 279 cm / 9'-2"



# 5-12 Yr. Play Structure - Kompan

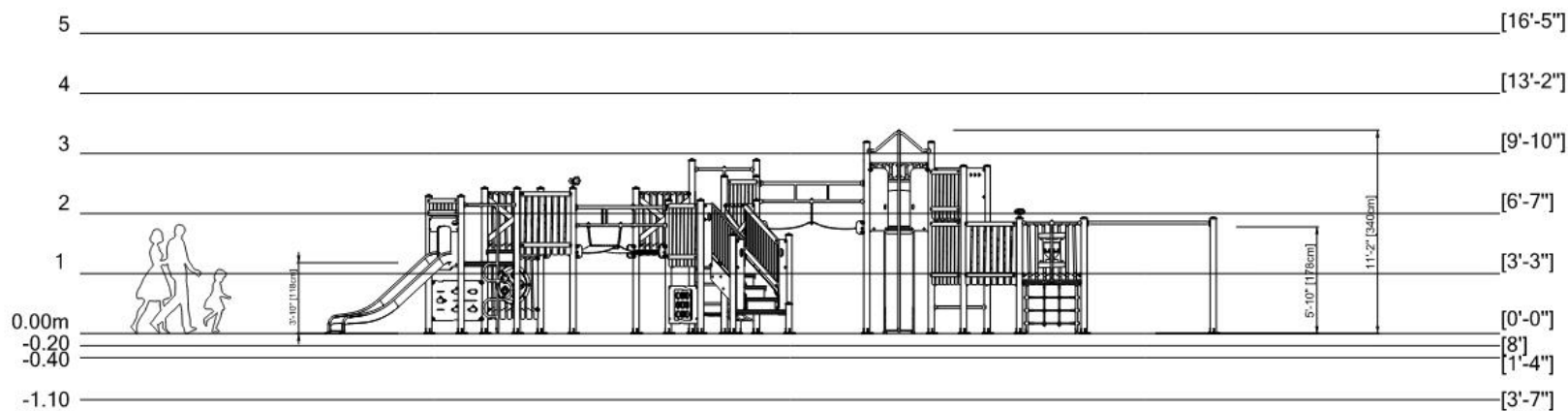
---



# 5-12 Yr. Play Structure - Kompan

**Max. fall height:** 178 cm / 5'-11"

**Total height:** 340 cm / 11'-2"



# Sensory Play Area

---



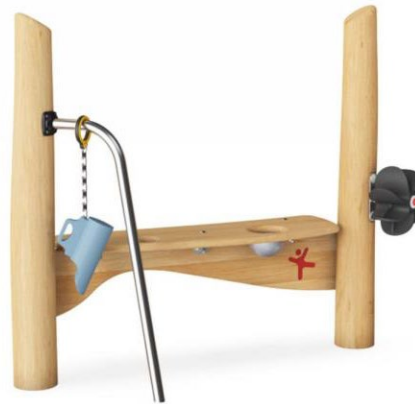
Sensory Logs



Maker Table - Kompan



Open Play House  
(two sided)



Maker Desk - Kompan

# SWINGS & INDEPENDENT PIECES

---

Swings - Kompan



Spinner - Berliner Disk



1 bay with 2 belts



1 bay with a basket



1 bay with 2 buckets

# 109 Comm Ave Building Facade

---



Evergreen Tree Planting  
between Windows





# THANK YOU!

Comments and questions?



January 11, 2023  
Boston Parks and Recreation

