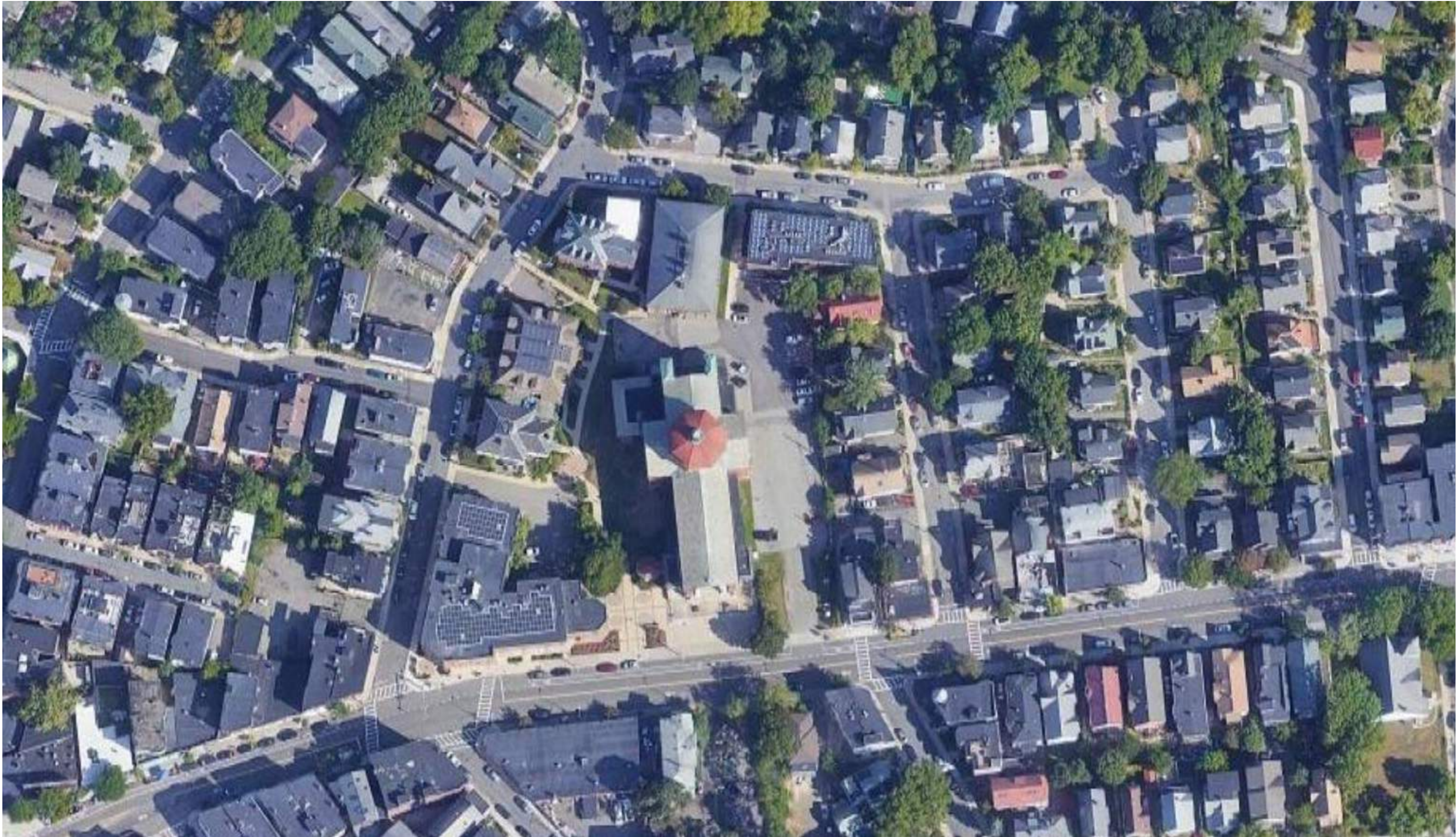


BLESSED SACRAMENT AFFORDABLE HOUSING DESIGN PROGRESS

JAMAICA PLAIN, MASSACHUSETTS

17 NOVEMBER 2022











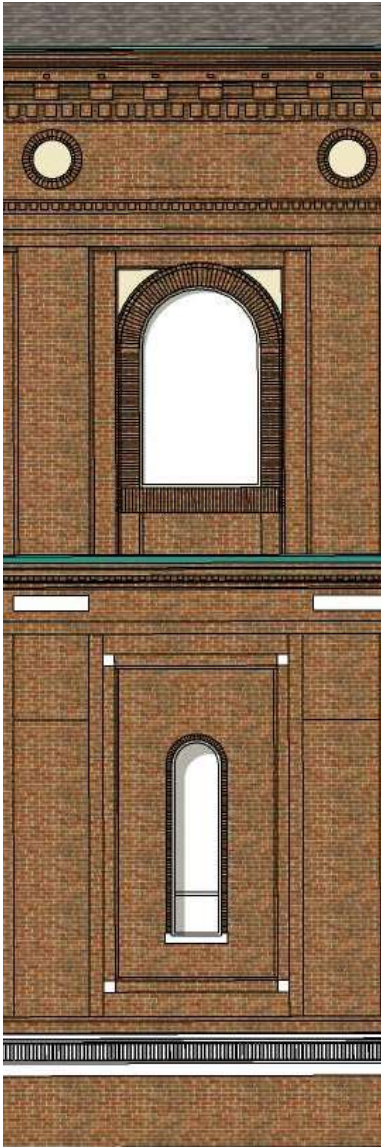
As Proposed at August 23 Meeting



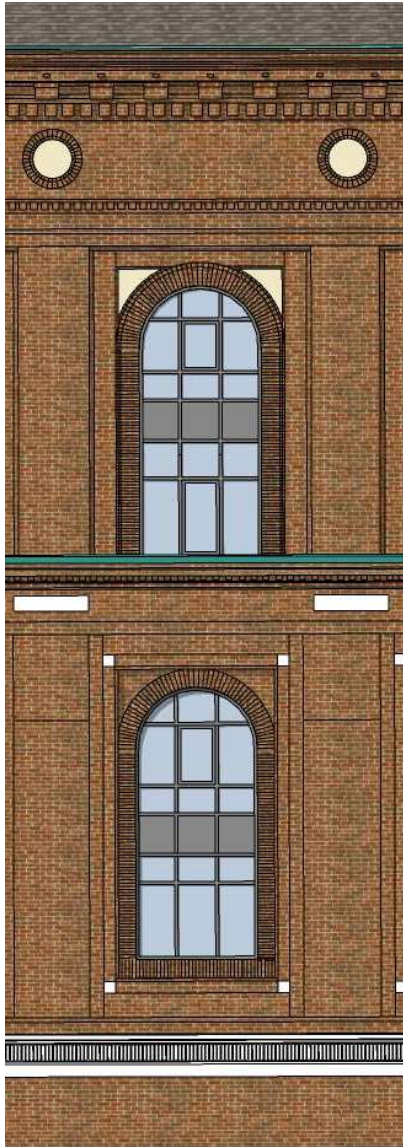
CLERESTORY WINDOW IN LEVEL 5 LOFT UNITS



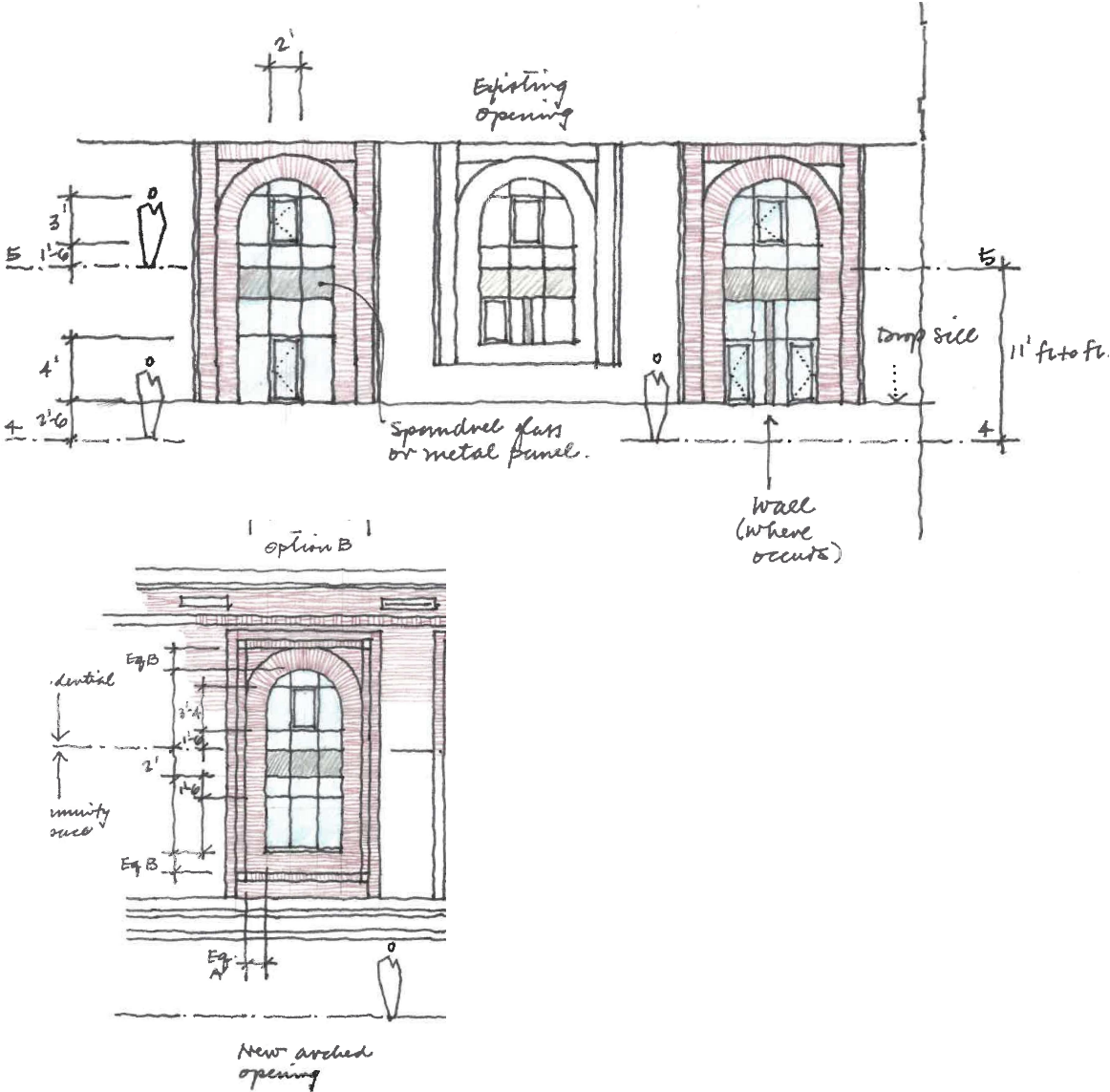
As Proposed at August 23 Meeting



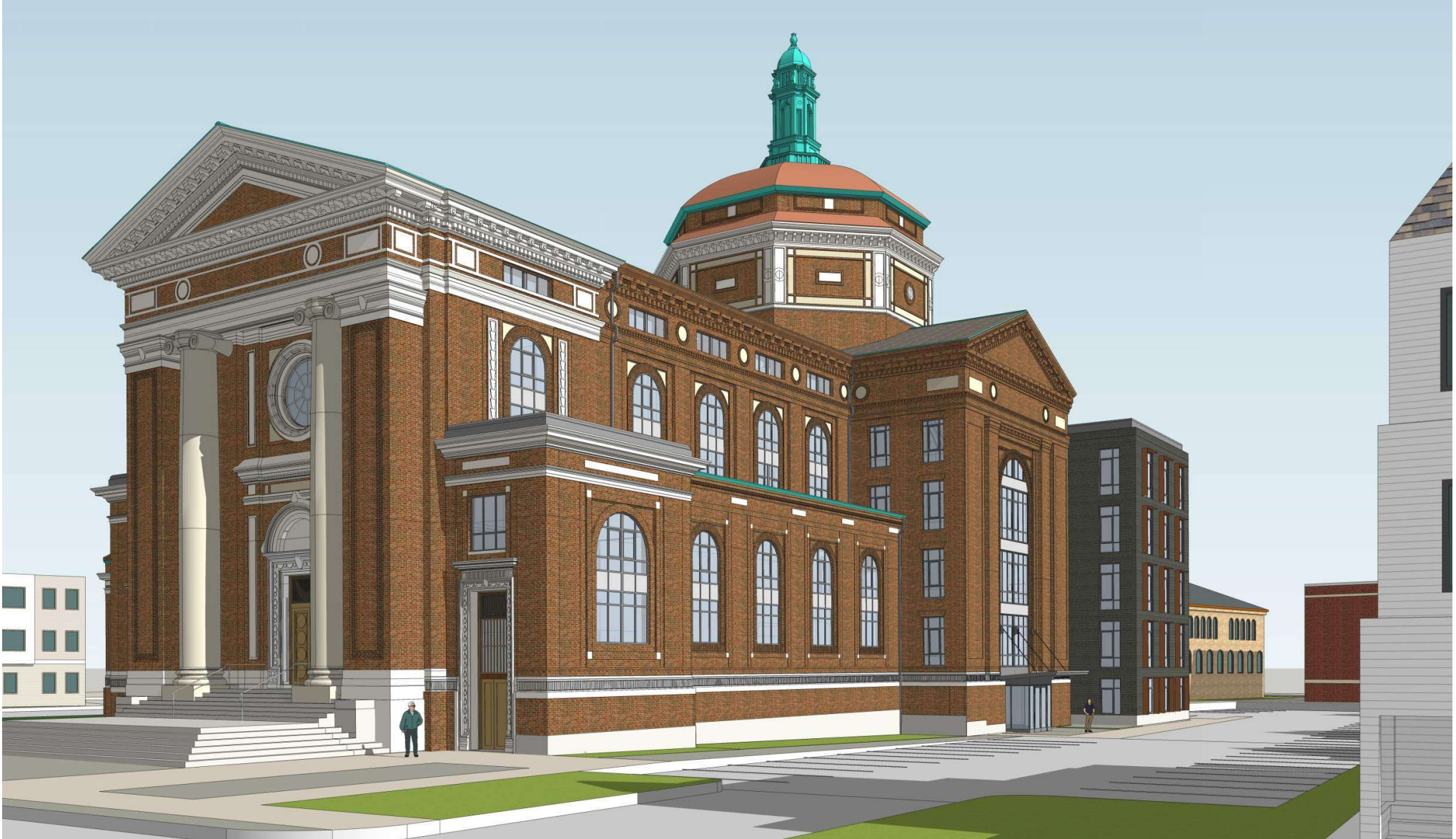
EXISTING ARCHES



PROPOSED ARCHES



As Proposed at August 23 Meeting

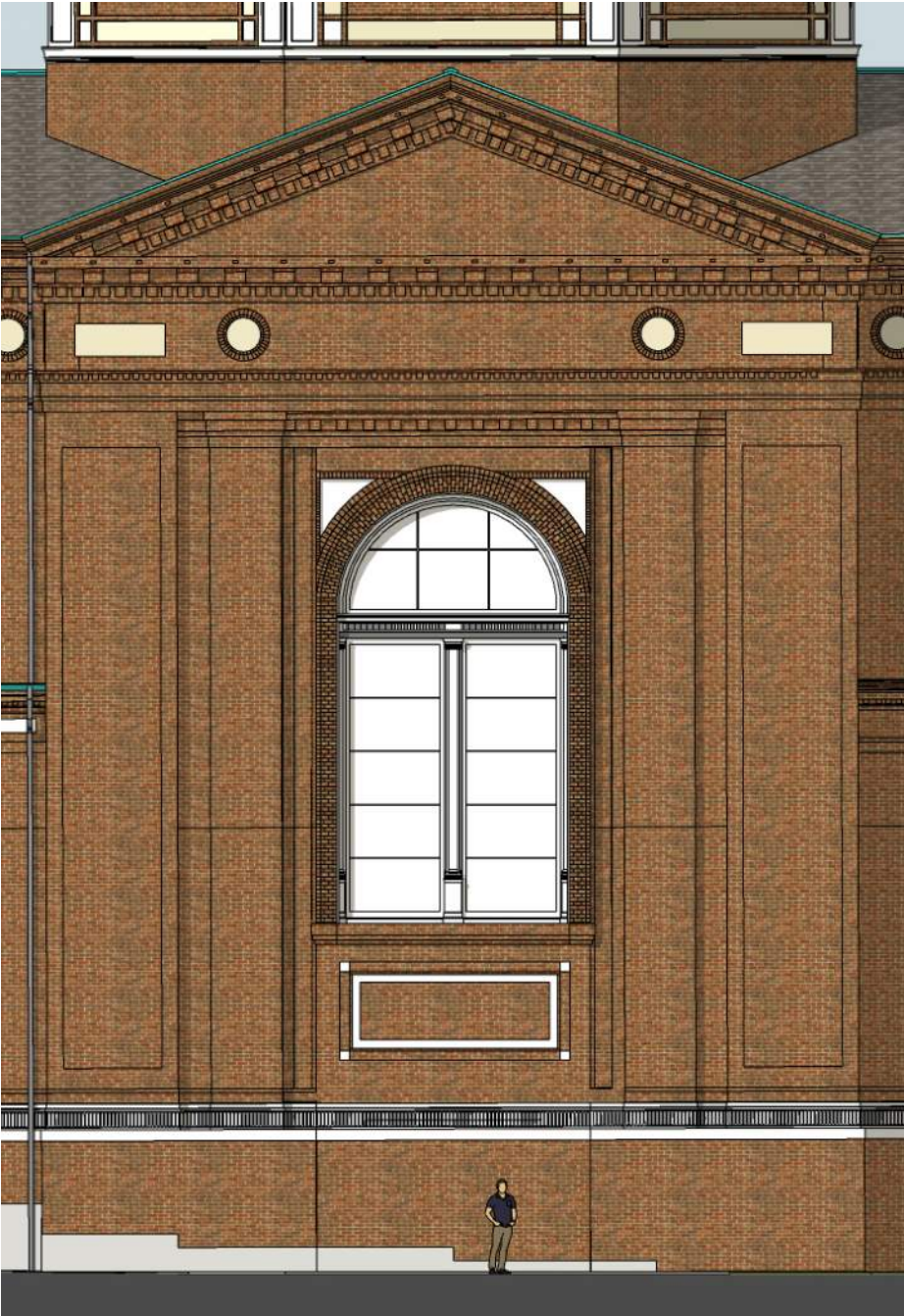


DIMELLA
SHAFFER

PENNROSE
Bricks & Mortar | Heart & Soul

VIEW FROM CENTRE STREET
BLESSED SACRAMENT / 23 AUGUST 2022

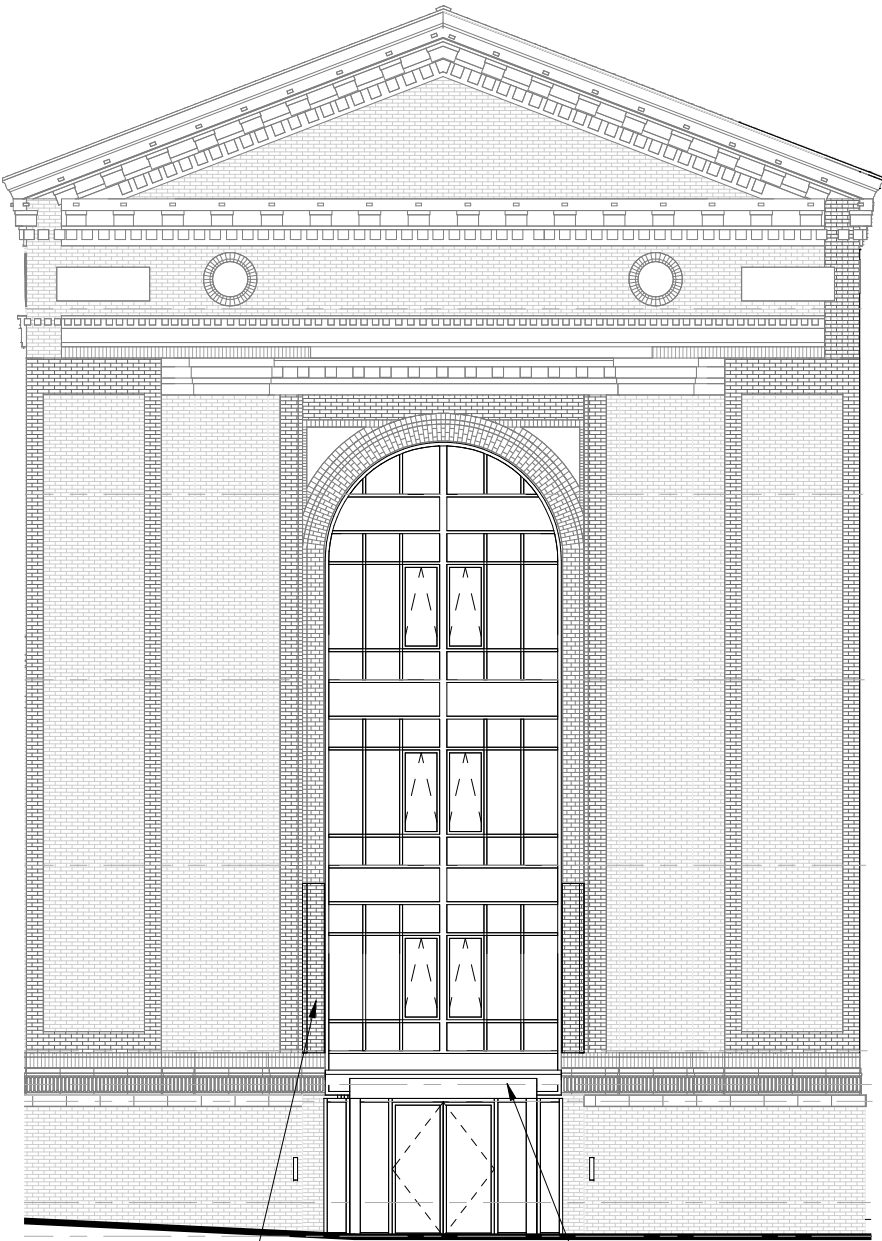
Updated Window Details



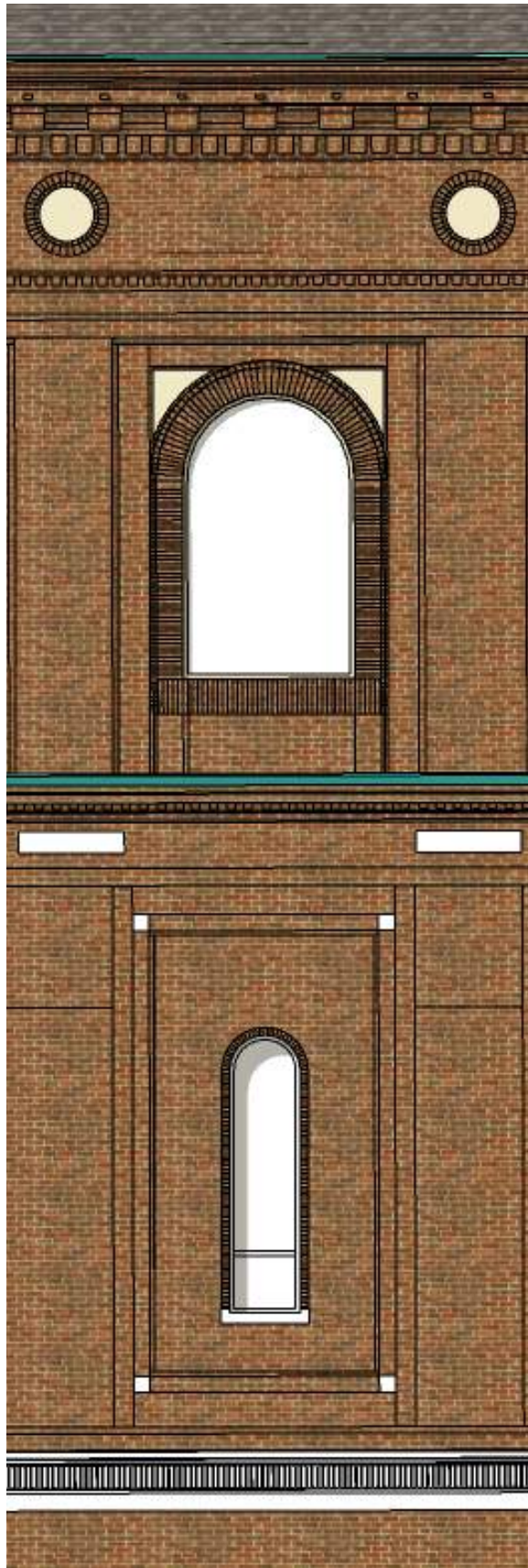
EXISTING TRANSEPT - EAST ELEVATION



PROPOSED TRANSEPT - EAST ELEVATION



NEW BRICKWORK FRAME TO MATCH EXISTING, TYP RESIDENTIAL ENTRANCE GLASS CANOPY w/ STAINLESS STEEL HANGER



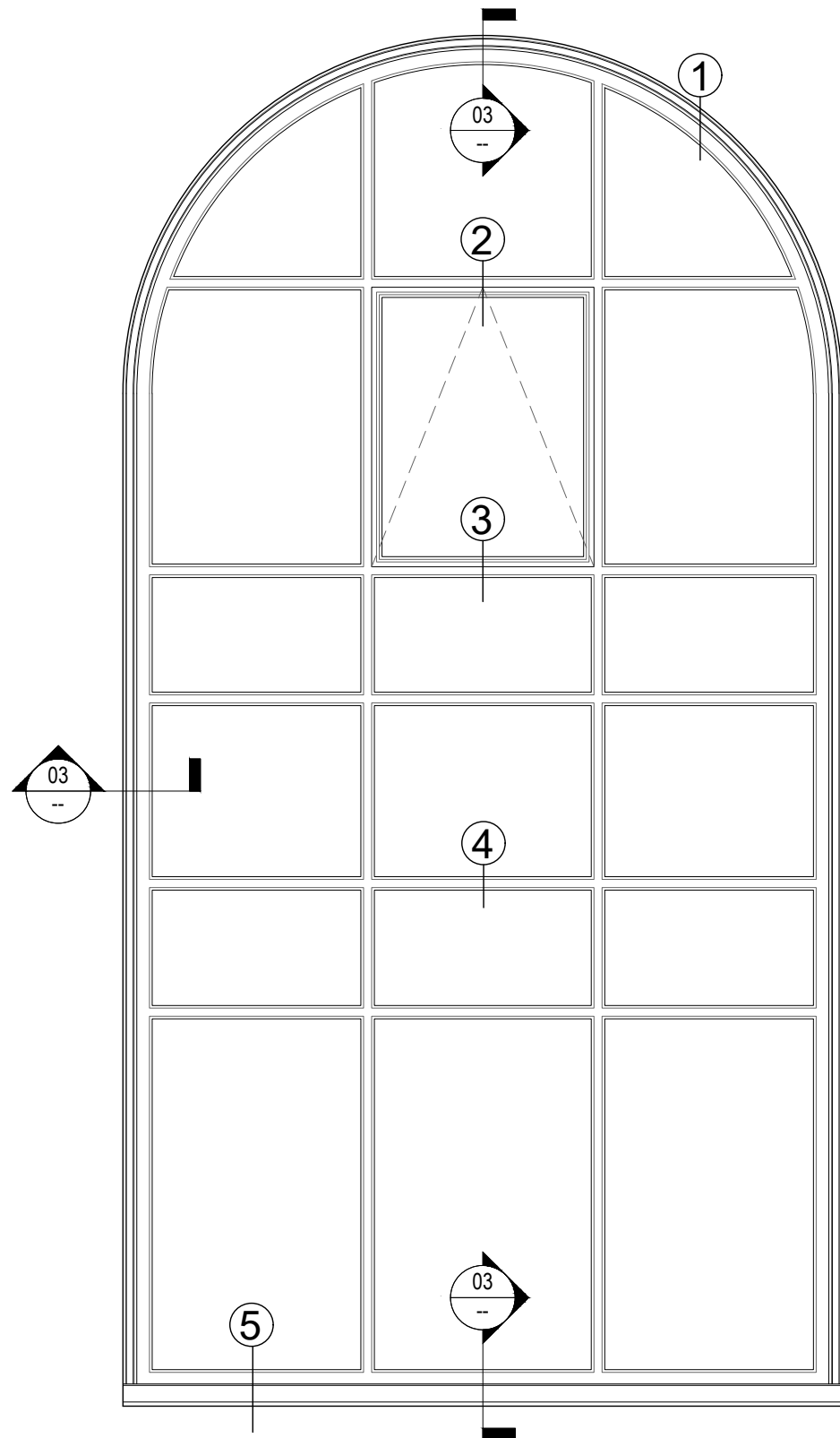
EXISTING ARCHES

PROPOSED ARCHES

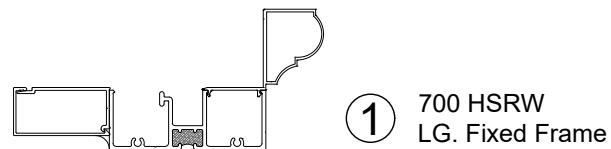
- GRAY SPANDREL GLASS
- NEW STUCCO PANELS
- UNIVERSAL 700 SERIES SNAP-IN "BULLNOSE" TRIM
- GRAY SPANDREL GLASS
- EXISTING BRICKWORK
- EXPANDED GLAZING IN RESIDENTIAL AND COMMUNITY SPACES



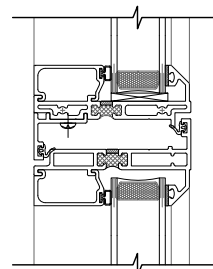
UPDATED LOWER ARCHES



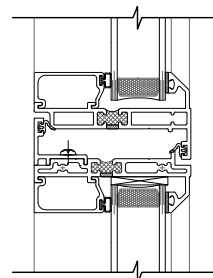
1 TYP. WINDOW @ LOWER LEVEL EAST ELEVATION
1/2" = 1'-0"



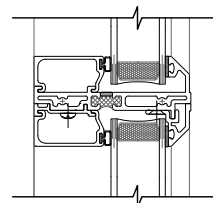
1 700 HSRW
LG. Fixed Frame



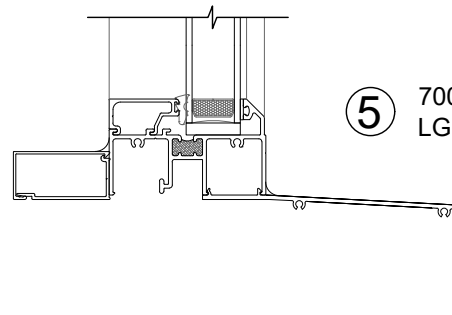
2 700 HSRW
Vent @ Horizontal Mullion



3 700 HSRW
Vent @ Horizontal Mullion

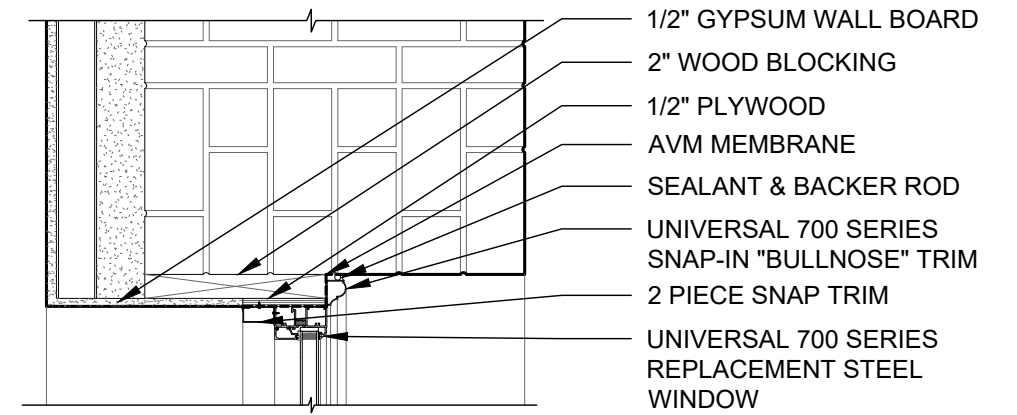


4 700 HSRW
Tru-Muntin @ Mullion

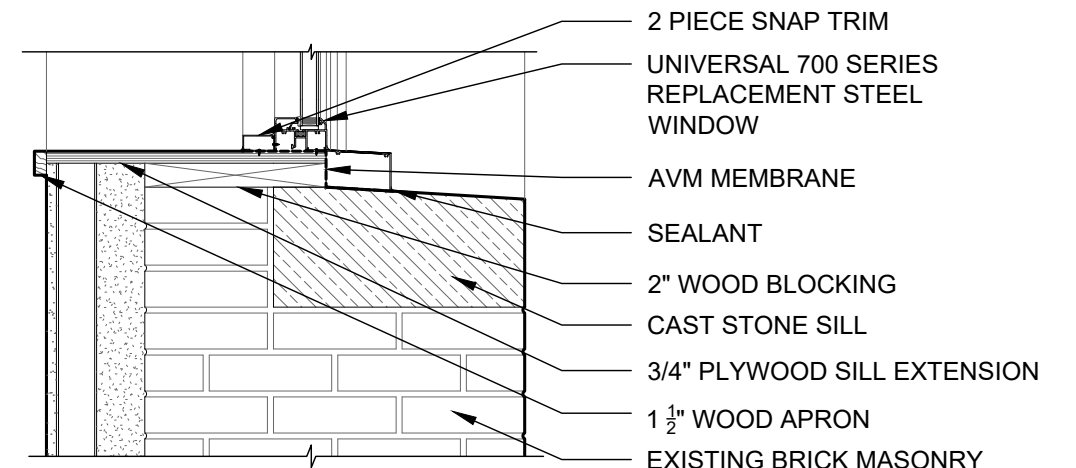


5 700 HSRW
LG. Fixed Frame

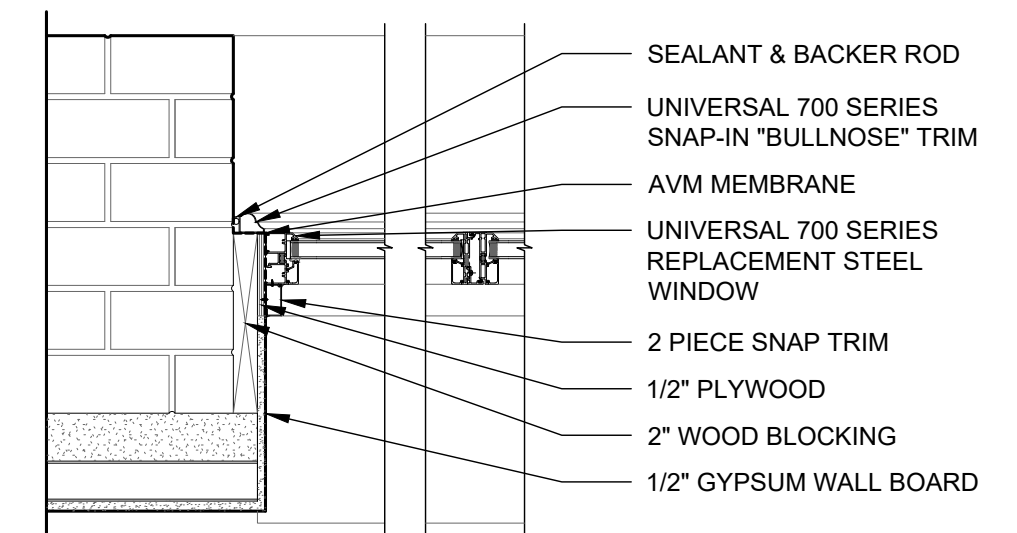
2 UNIVERSAL 700 SERIES WINDOW DETAILS
3" = 1'-0"



- 1/2" GYPSUM WALL BOARD
- 2" WOOD BLOCKING
- 1/2" PLYWOOD
- AVM MEMBRANE
- SEALANT & BACKER ROD
- UNIVERSAL 700 SERIES SNAP-IN "BULLNOSE" TRIM
- 2 PIECE SNAP TRIM
- UNIVERSAL 700 SERIES REPLACEMENT STEEL WINDOW

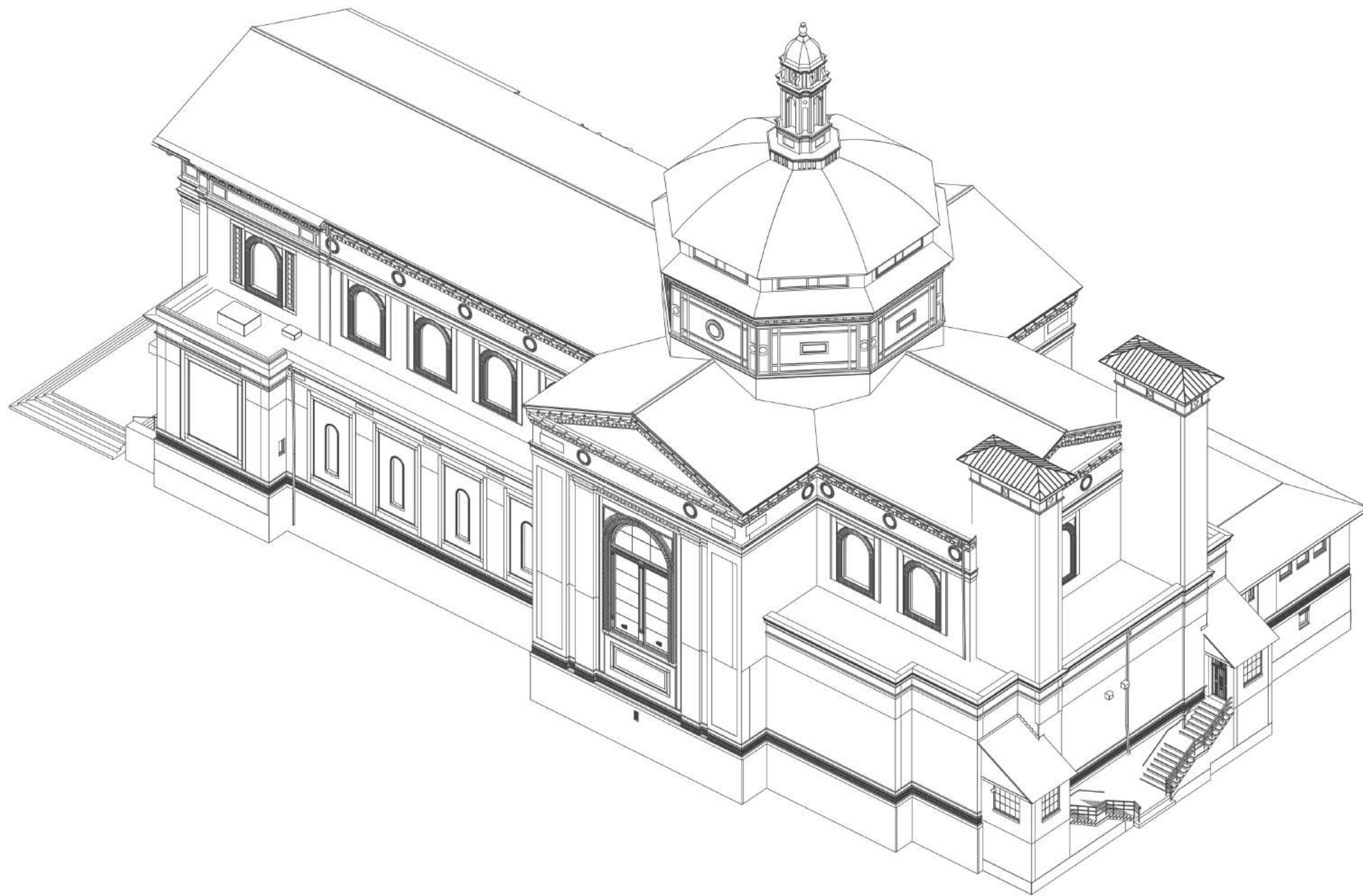


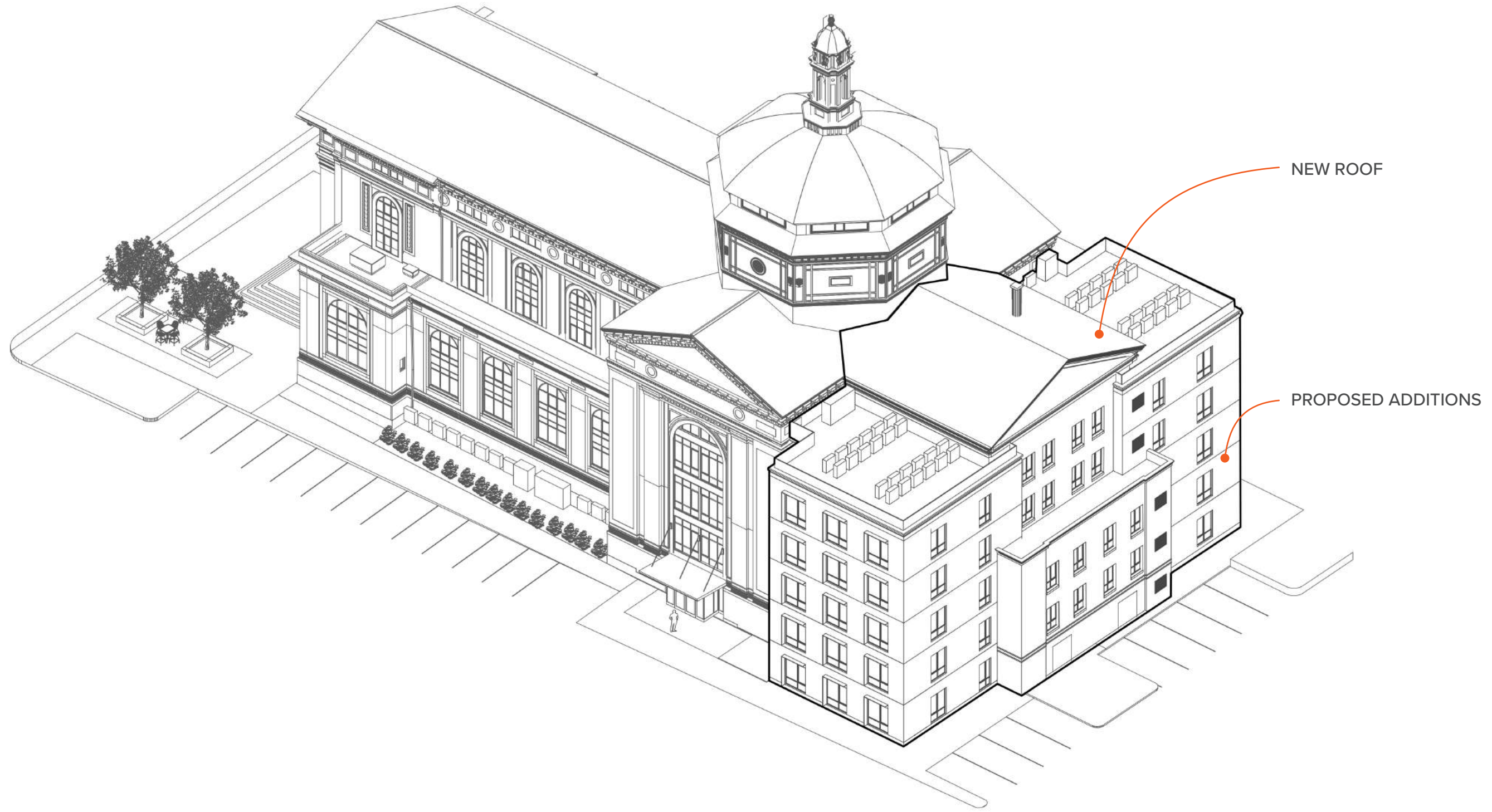
- 2 PIECE SNAP TRIM
- UNIVERSAL 700 SERIES REPLACEMENT STEEL WINDOW
- AVM MEMBRANE
- SEALANT
- 2" WOOD BLOCKING
- CAST STONE SILL
- 3/4" PLYWOOD SILL EXTENSION
- 1 1/2" WOOD APRON
- EXISTING BRICK MASONRY WALL



- SEALANT & BACKER ROD
- UNIVERSAL 700 SERIES SNAP-IN "BULLNOSE" TRIM
- AVM MEMBRANE
- UNIVERSAL 700 SERIES REPLACEMENT STEEL WINDOW
- 2 PIECE SNAP TRIM
- 1/2" PLYWOOD
- 2" WOOD BLOCKING
- 1/2" GYPSUM WALL BOARD

3 TYP. WINDOW HEAD, SILL, AND JAMB DETAILS @ EXISTING WALL
1" = 1'-0"







EXISTING



ADDITIONS ONLY



RECONSTRUCTION



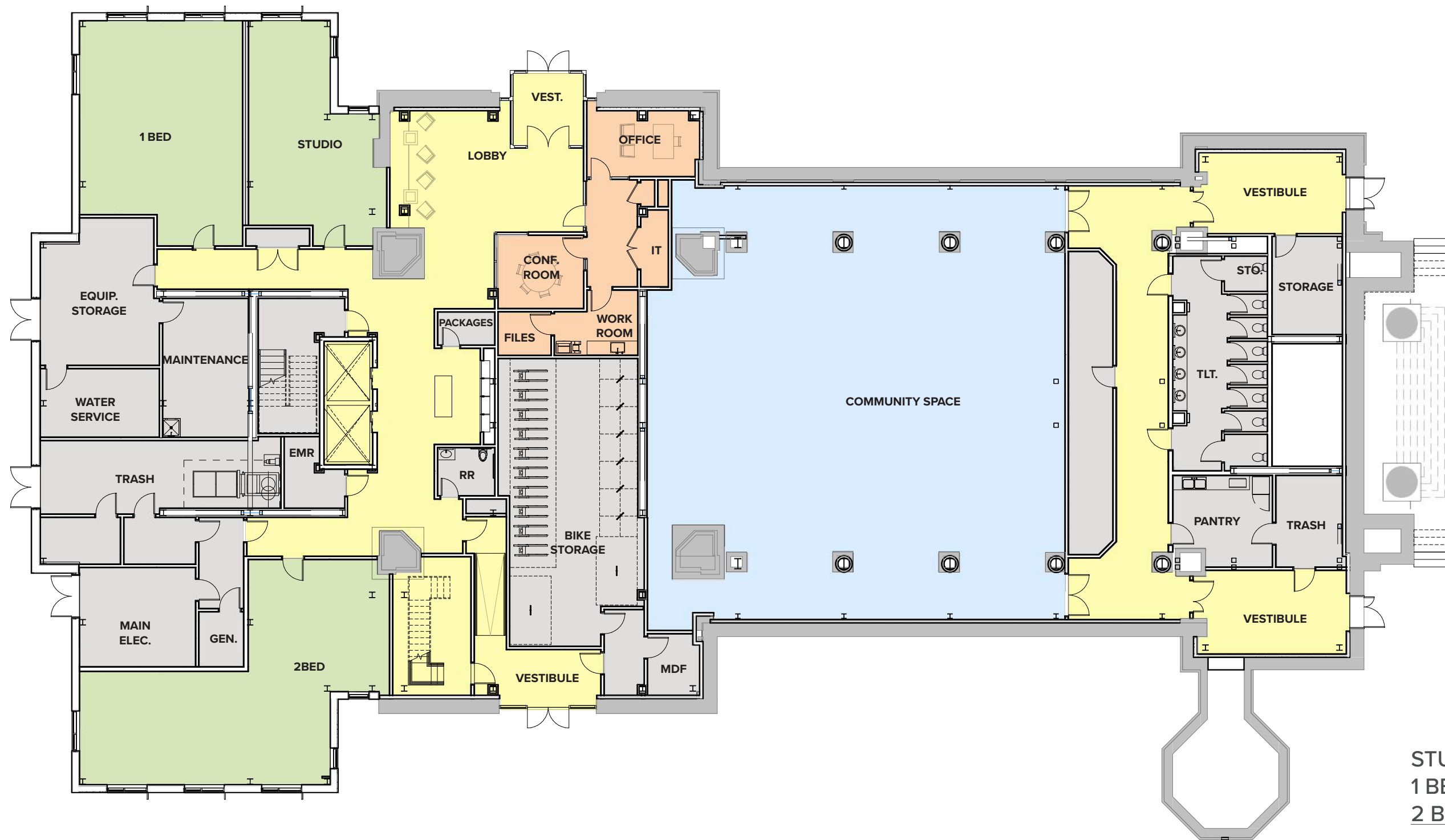
LOFTS PARKING



CREIGHTON STREET



| | |
|---------------|-----------|
| STUDIOS: | 21 |
| 1 BEDROOMS: | 15 |
| 2 BEDROOMS: | 19 |
| TOTAL: | 55 |



| | |
|---------------|-----------|
| STUDIOS: | 17 |
| 1 BEDROOMS: | 19 |
| 2 BEDROOMS: | 19 |
| TOTAL: | 55 |

