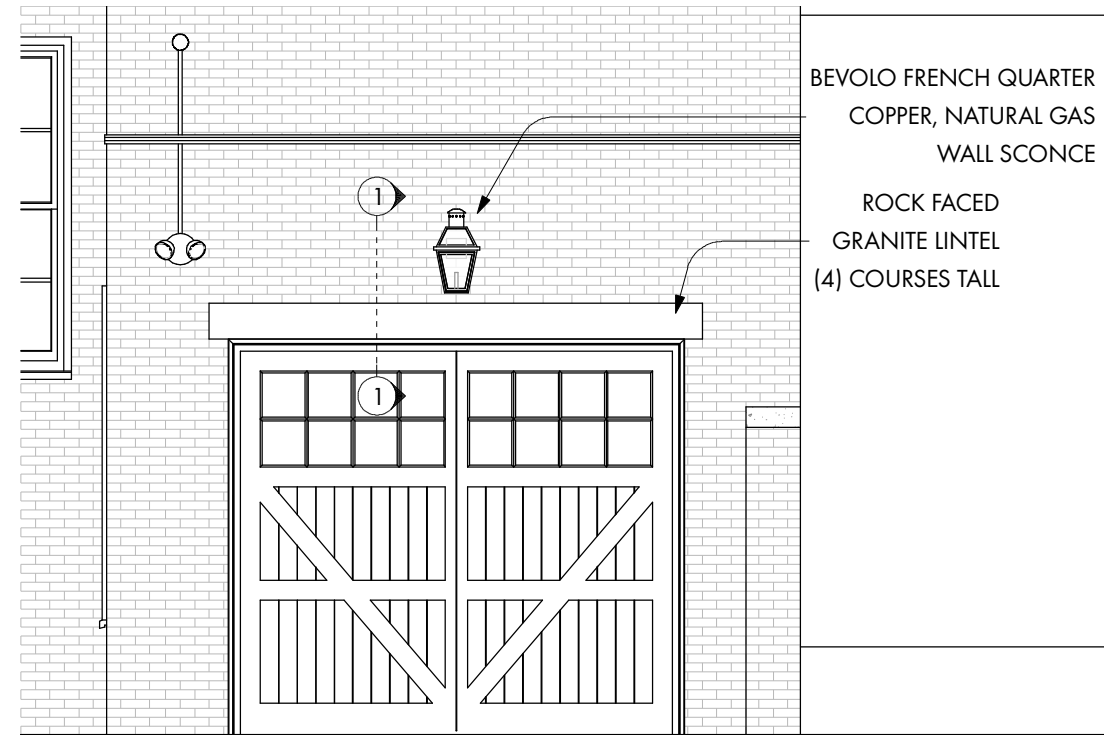


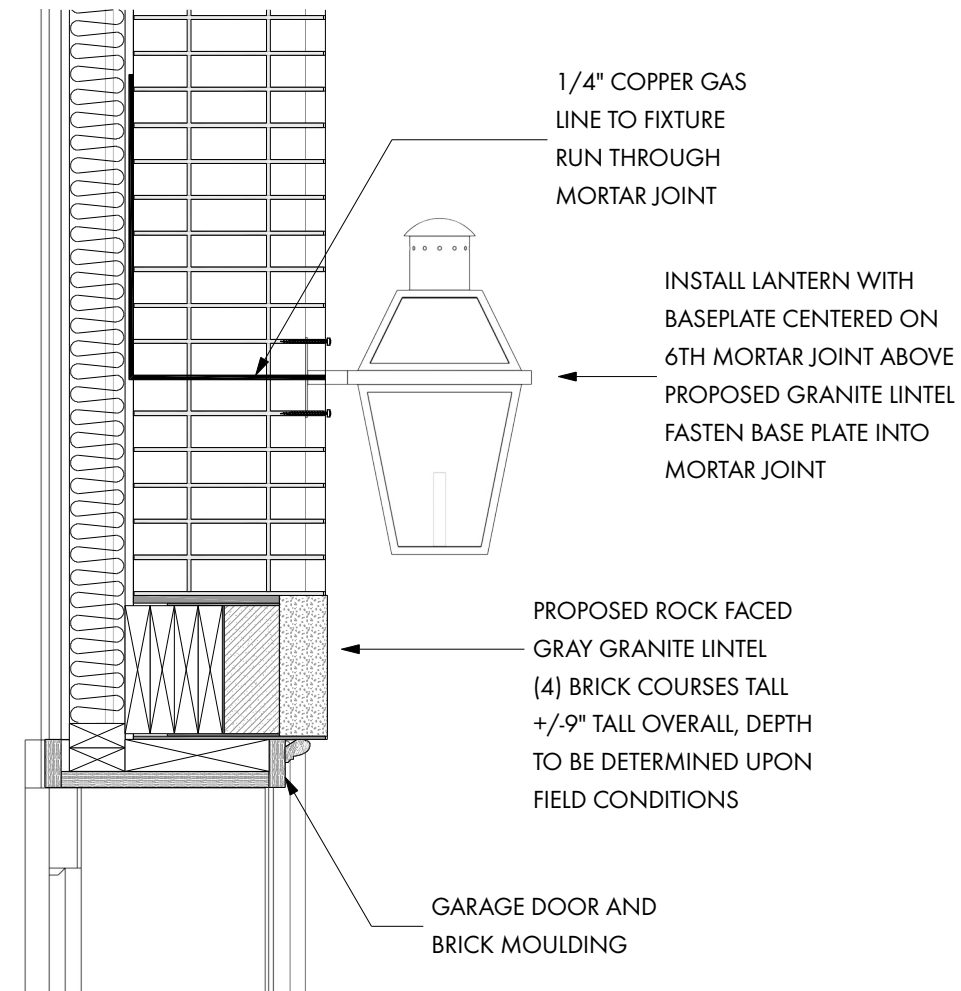
94 BEACON STREET SCOPE OF WORK

1. REPLACE EXISTING LIGHT OVER GARAGE DOOR WITH BEVOLO FRENCH QUARTER NATURAL GAS, COPPER LANTERN



PROPOSED LANTERN ELEVATION

SCALE: 1/4"=1'-0"

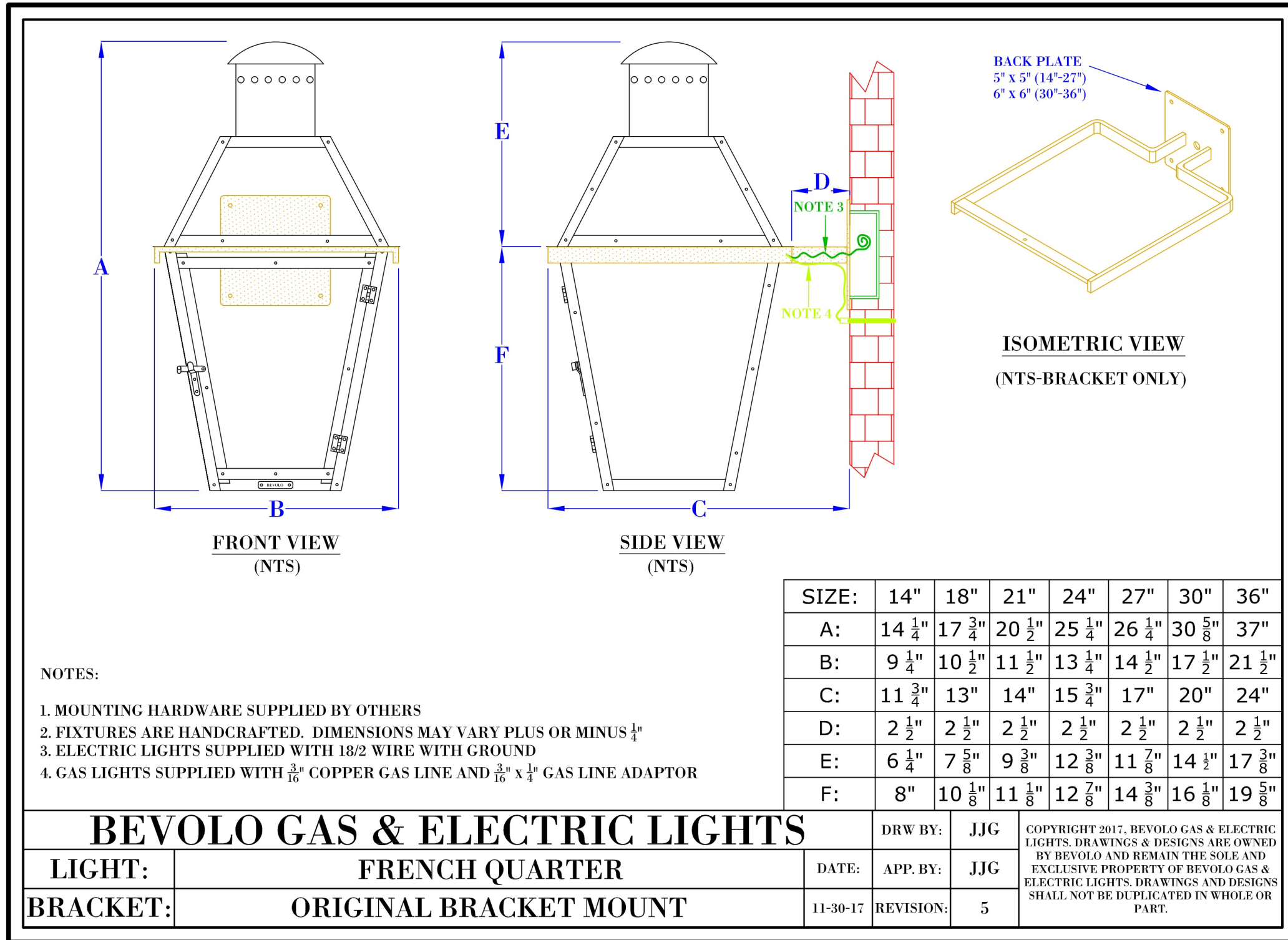


PROPOSED LANTERN DETAIL

SCALE: 1"=1'-0"



94 BEACON STREET EXISTING GARAGE LIGHT IMAGES



NOTES:

1. MOUNTING HARDWARE SUPPLIED BY OTHERS
2. FIXTURES ARE HANDCRAFTED. DIMENSIONS MAY VARY PLUS OR MINUS 1/4"
3. ELECTRIC LIGHTS SUPPLIED WITH 18/2 WIRE WITH GROUND
4. GAS LIGHTS SUPPLIED WITH 3/16" COPPER GAS LINE AND 3/16" x 1/4" GAS LINE ADAPTOR

| SIZE: | 14" | 18" | 21" | 24" | 27" | 30" | 36" |
|-------|---------|---------|---------|---------|---------|---------|---------|
| A: | 14 1/4" | 17 3/4" | 20 1/2" | 25 1/4" | 26 1/4" | 30 5/8" | 37" |
| B: | 9 1/4" | 10 1/2" | 11 1/2" | 13 1/4" | 14 1/2" | 17 1/2" | 21 1/2" |
| C: | 11 3/4" | 13" | 14" | 15 3/4" | 17" | 20" | 24" |
| D: | 2 1/2" | 2 1/2" | 2 1/2" | 2 1/2" | 2 1/2" | 2 1/2" | 2 1/2" |
| E: | 6 1/4" | 7 5/8" | 9 3/8" | 12 3/8" | 11 7/8" | 14 1/2" | 17 3/8" |
| F: | 8" | 10 1/8" | 11 1/8" | 12 7/8" | 14 3/8" | 16 1/8" | 19 5/8" |

| | | | | | | |
|---|------------------------|--|----------|-----------|---|-----|
| BEVOLO GAS & ELECTRIC LIGHTS | | | DRW BY: | JJG | COPYRIGHT 2017, BEVOLO GAS & ELECTRIC LIGHTS. DRAWINGS & DESIGNS ARE OWNED BY BEVOLO AND REMAIN THE SOLE AND EXCLUSIVE PROPERTY OF BEVOLO GAS & ELECTRIC LIGHTS. DRAWINGS AND DESIGNS SHALL NOT BE DUPLICATED IN WHOLE OR PART. | |
| LIGHT: | FRENCH QUARTER | | DATE: | APP. BY: | | JJG |
| BRACKET: | ORIGINAL BRACKET MOUNT | | 11-30-17 | REVISION: | | 5 |
| | | | | | | |



BEVOLO FRENCH QUARTER GAS LANTERN



DATE:
9/14/2022

SCALE:

REV:

**GARAGE LANTERN
94 BEACON STREET
BOSTON, MA**

DUSTIN NOLIN R.A.
1 HUNTINGTON AVE.
BOSTON, MA 02116
781.718.8009
dustin@dna-architecture.com

DNA
ARCHITECTURE

A4