



90

# 51 MELCHER

FORT POINT, SOUTH BOSTON, MA

FORT POINT CHANNEL LANDMARKS DISTRICT

~~03.10.2022~~

09.21.2022

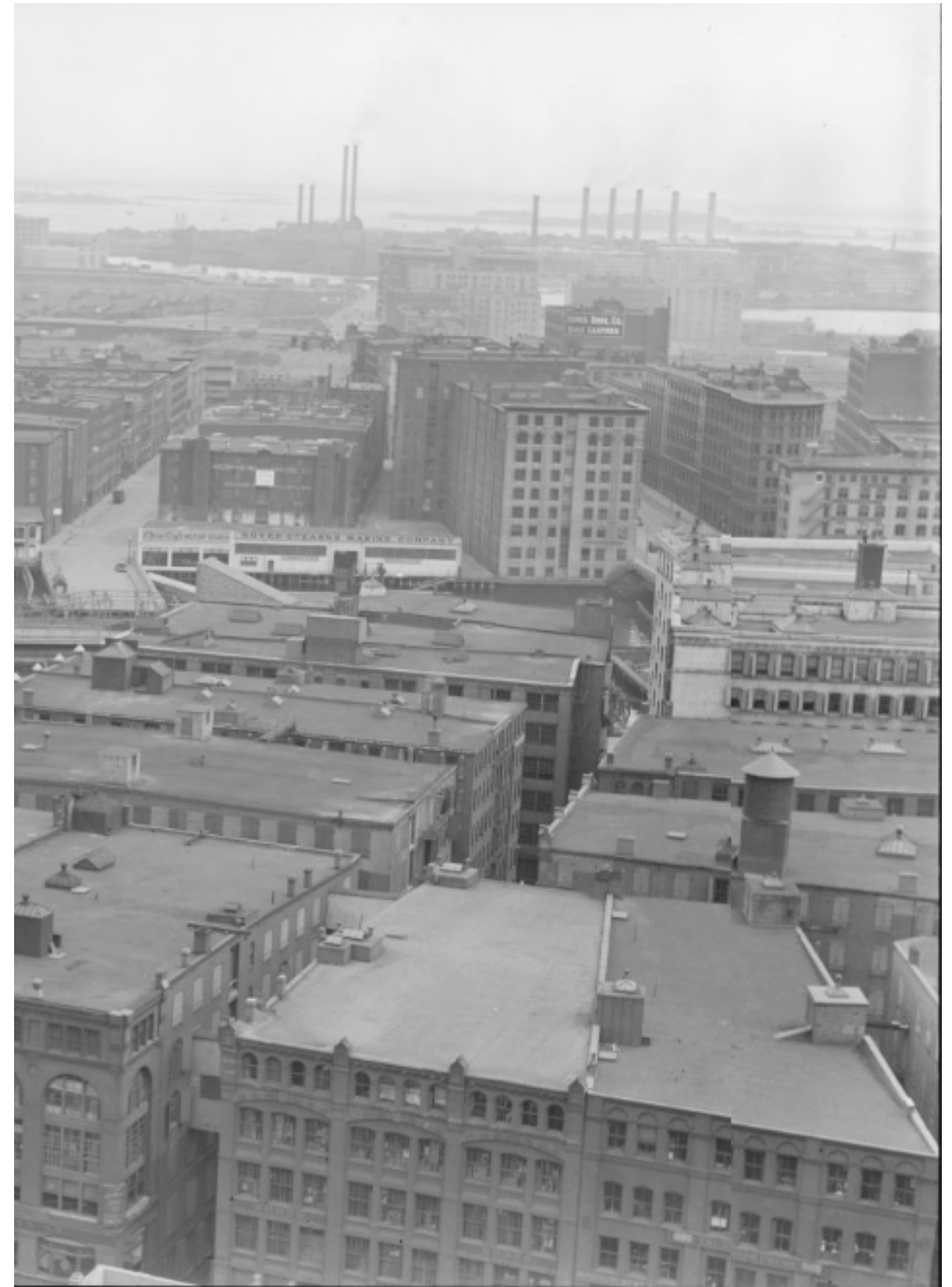
A STREET

MELCHER STREET

TROIKA

# SUMMARY

- Fort Point Channel Landmark District Commission Review:
  - Project scope was approved, with provisos, as part of **03/10/2022** public hearing
  - Additional project scope surrounding the windows at the proposed elevator shaft at Necco Street was approved at the **04/14/2022** public hearing.
- Article 80 Large Project Review:
  - Change of use exceeds 50k sq. ft GFA threshold.
- Existing Overview:
  - Former Boston Wharf Co. Industrial Building constructed in 1916.
  - Original use was for wool manufacturing
  - 2012 upgrades to support office use.
- Proposed Overview:
  - Conversion of existing 97k sq. ft office building to (60/40) life science/office use.
  - Design objective to preserve historic character of building.
  - No additional sq. ft added to building.
  - No change to Melcher Street Facade.
  - Minimal exterior upgrades on Necco Court and Roof to support life science use.
  - Maintain character defining skybridge.
  - No parking existing or proposed.



# DISCUSSION TOPICS

1. Site

2. Existing Conditions

3. Provisos 03/10/22

4. Updated to Previously Approved Renovations

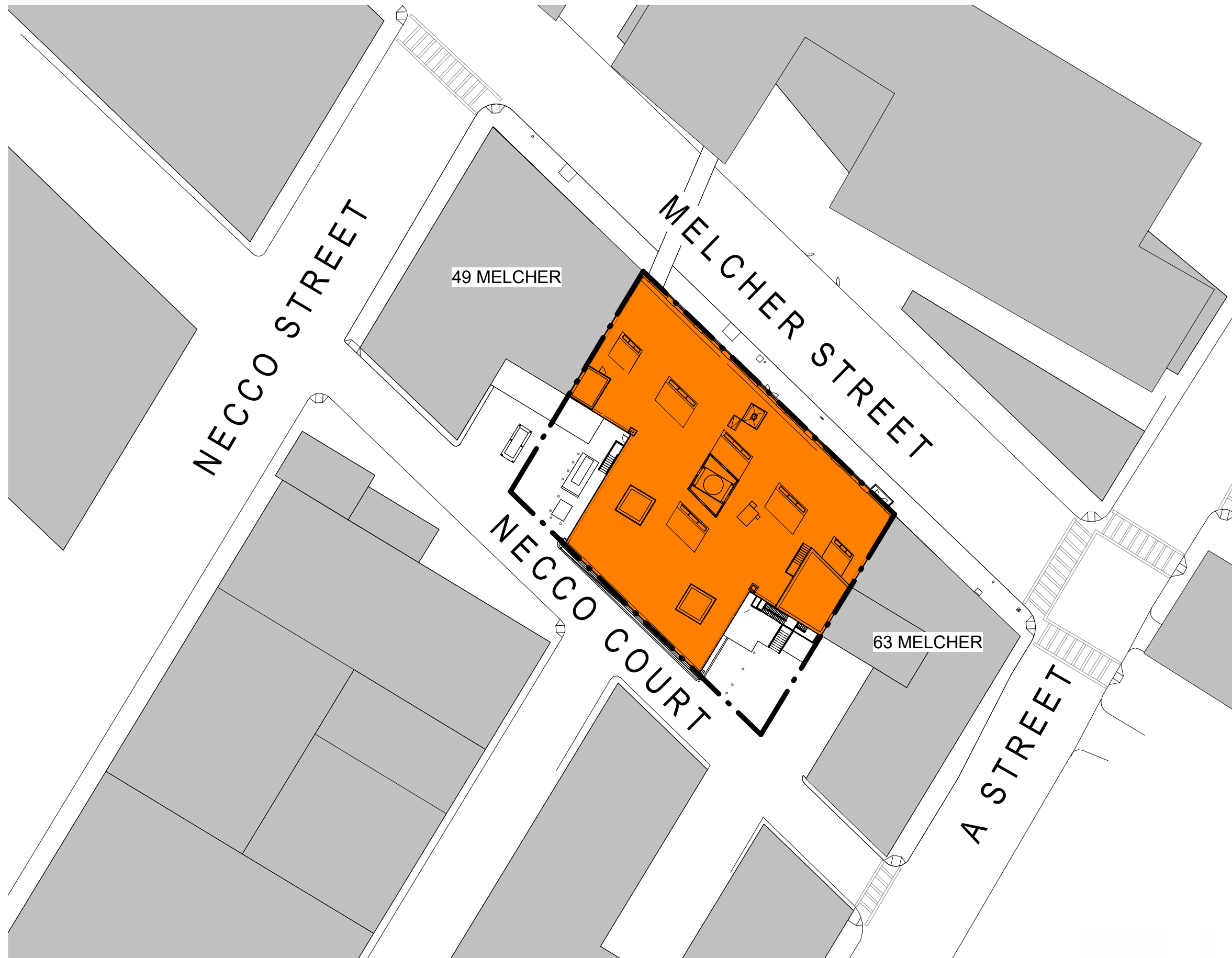
- Updated Rooftop Equipment
- Minor Window Louver Adjustments
- Removed Proposed Stair and Door for Fire Pump Room
- Updates to Utility Equipment at Grade
- Minor Updates to Proposed Loading Dock Re-Activation

4. Next Steps and Questions

# 1. SITE



Map tiles by Stamen



# 2. EXISTING BUILDING



VIEW FROM A STREET



NORTH MELCHER TOWARDS A ST



FRONT VIEW ON MELCHER ST



MAIN MELCHER FACADE



MAIN MELCHER ENTRY TO REMAIN





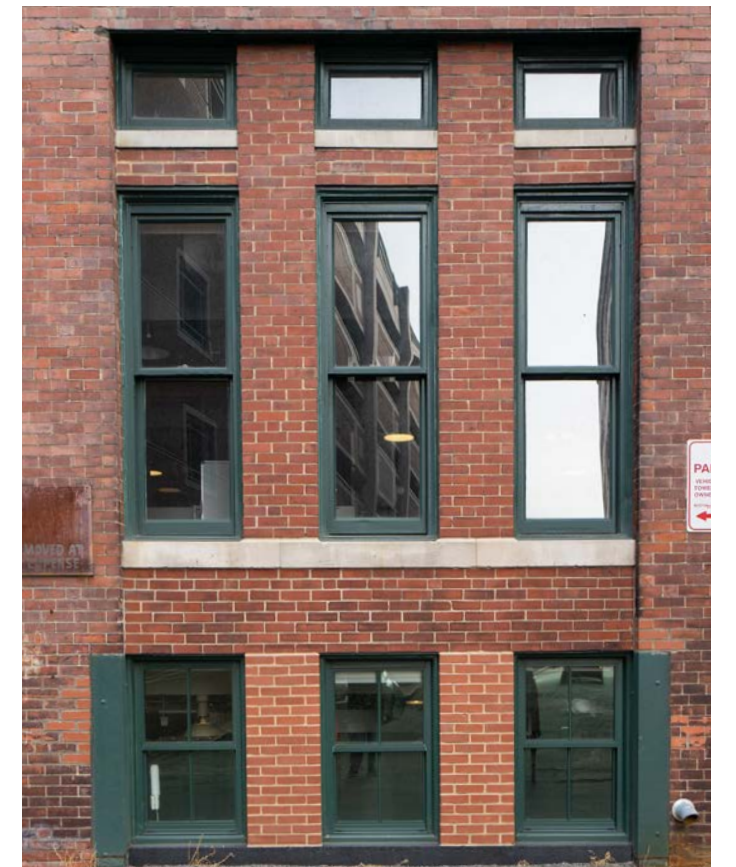
REVITALIZED LOADING DOCK



EXISTING LOADING DOCK



A STREET AND NECCO COURT



WINDOW EXAMPLE - NECCO CT

# 3. PROVISOS

## QUESTION 1:

Determine if the generator and belly tank can be painted “Fort Point” green.

### ANSWER:

Generator and belly tank can be custom painted. Green will match other utility equipment at grade.

## QUESTION 2:

Determine if the belly tank can be lowered as much as possible while still meeting code.

### ANSWER:

Generator was lowered to grade and the team is utilizing a flood shield protection approach in lieu of raising. Transformer and Switch no longer needs to be raised per conversations with Eversource.

## QUESTION 3:

Determine if the mechanicals can be moved towards the center of the roof.

### ANSWER:

Mechanical exhaust units cannot be moved closer to center, due to constraint at cooling tower and required clearances. Refer to updated plan in presentation.



# 4. PROPOSED RENOVATIONS

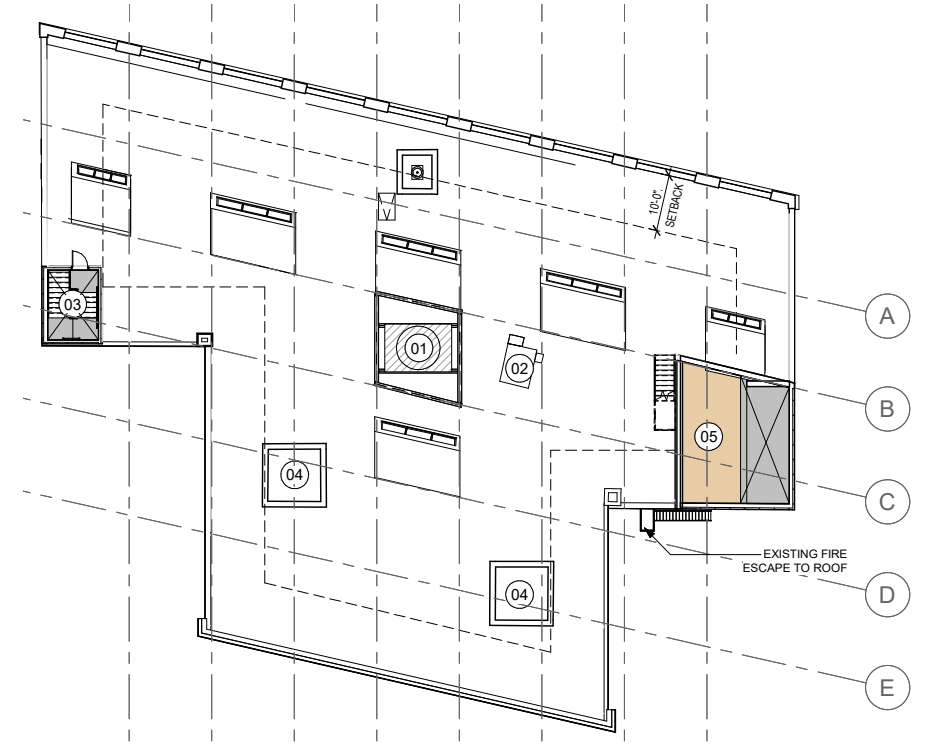
# ROOFTOP UPDATES

## 1. ROOFTOP EQUIPMENT

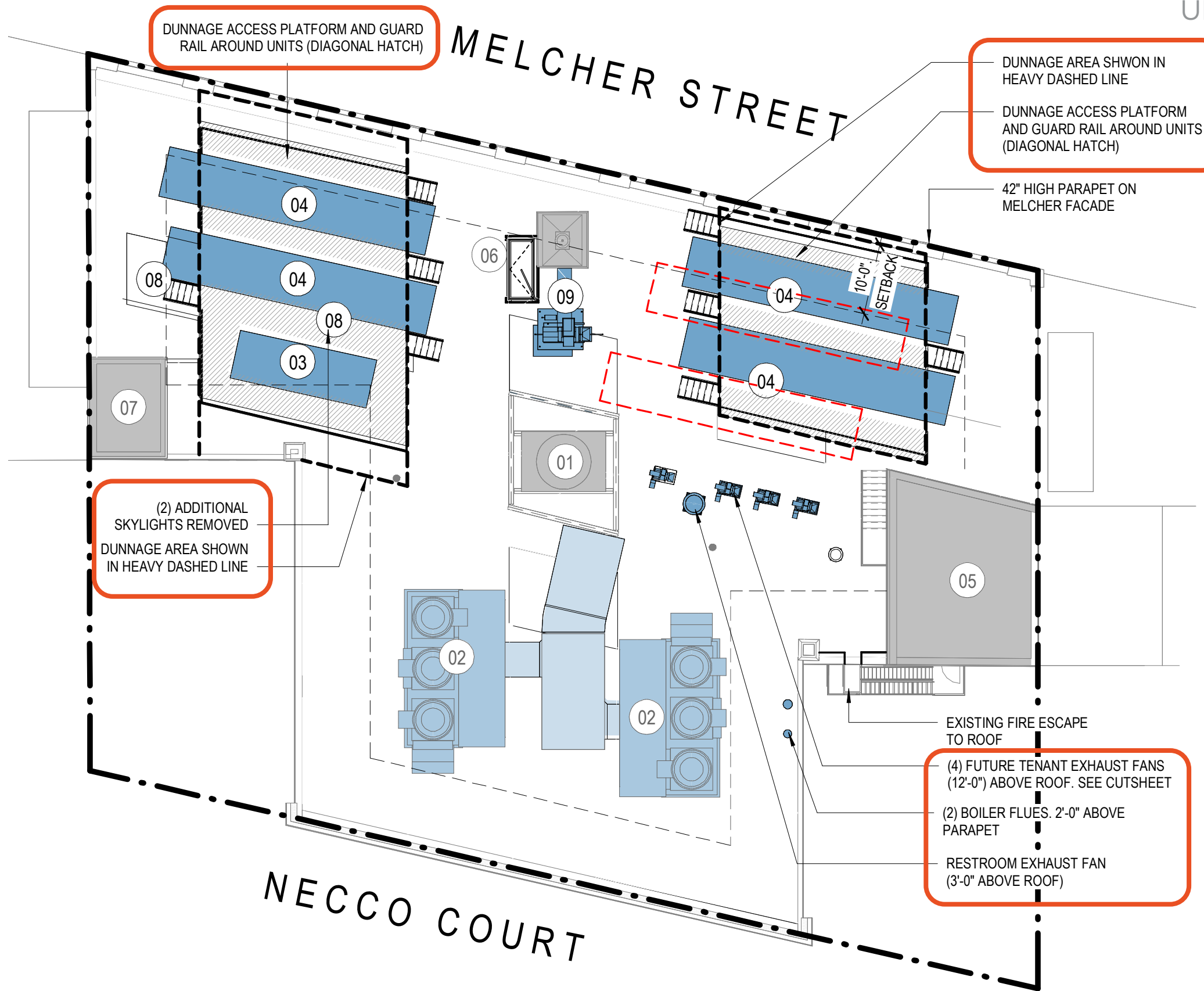
- **(2) CHILLERS REMOVED. (4) AIR SOURCE HEAT PUMPS ADDED.**  
**REASON:** IN CONJUNCTION WITH THE IGBC AND ARTICLE 37 THE EQUIPMENT IS REQUIRED TO ACHIEVE 97% REDUCTION IN FOSSIL FUELS AND TO ALIGN ITSELF WITH THE NEW SUSTAINABILITY STANDARDS OF THE CITY.
- STEEL DUNNAGE AND PLATFORMS ADDED TO ACCOUNT FOR THE (4) NEW AIR SOURCE HEAT PUMPS.
- **(4) TENANT EXHAUST FANS ADDED.**  
**REASON:** TO ALLOW FOR TENANT FLEXIBILITY AND LIMIT FUTURE IMPACTS.
- **(1) STAIR PRESSURIZATION FAN AND (2) SMALL EXHAUST FANS**  
**REASON:** REPLACEMENT OF EXISTING AND REQUIRED FOR BUILDING OPERATION.



ROOFTOP EQUIPMENT SCHEDULE	
01	EXISTING COOLING TOWER WEIGHT: 16,200lbs
02	EXHAUST AIR HANDLING UNITS (INCLUDES STROBIC FLUES) DIM: 14'-8"W x 28'-6"L x 18'H WEIGHT: 27,033lbs
03	STANDBY GENERATOR DIM: 7'W x 20'L x 11'H WEIGHT: 17,000lbs
04	AIR-COOLED CHILLER DIM: 7'W x 38'L x 11'H WEIGHT: 19,000lbs
05	EXISTING ELEVATOR PENTHOUSE
06	NEW SERVICE ACCESS HATCH
07	NEW FREIGHT ELEVATOR PENTHOUSE REUSE AND MODIFY EXISTING PENTHOUSE
08	EXISTING SKYLIGHTS TO BE REMOVED AND REPLACED WITH ROOFING

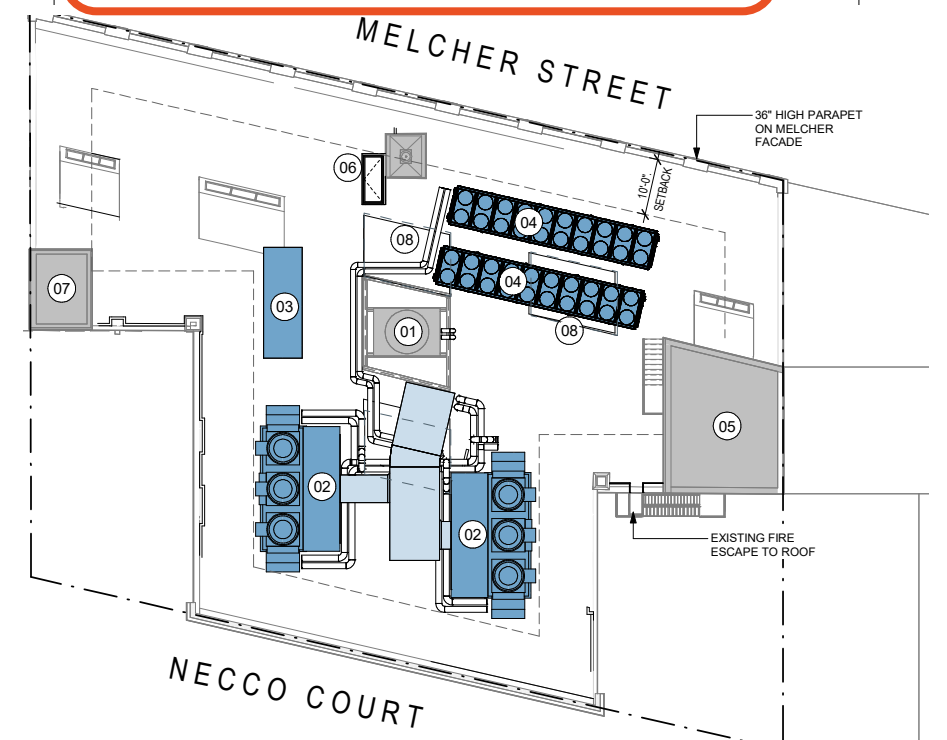


EXISTING ROOF PLAN



### ROOFTOP EQUIPMENT SCHEDULE

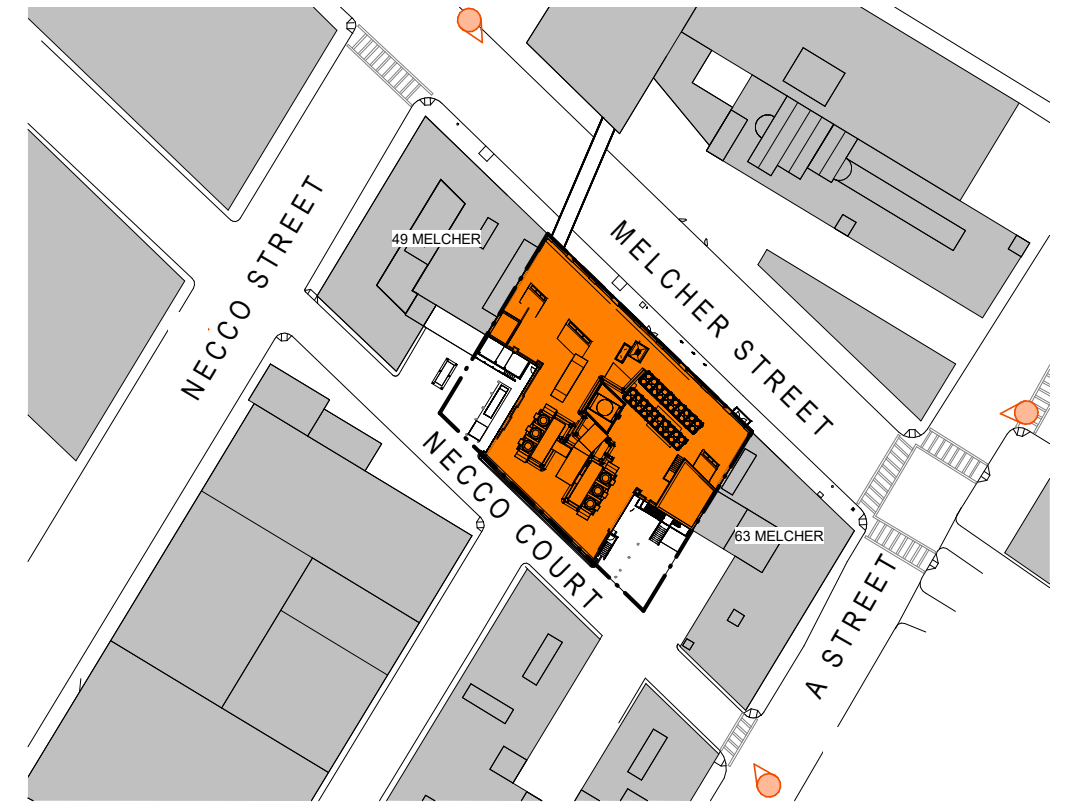
01	EXISTING COOLING TOWER WEIGHT: 16,200lbs
02	EXHAUST AIR HANDLING UNITS (INCLUDES STROBIC FLUES) DIM: 14'-8"W x 28'-6"L x 18"H WEIGHT: 27,033lbs
03	STANDBY GENERATOR DIM: 7'W x 20'L x 11'H WEIGHT: 17,000lbs
04	AIR SOURCE HEAT PUMP DIM: 8'W x 39'L x 8'H WEIGHT: 19,000lbs
05	EXISTING ELEVATOR PENTHOUSE
06	NEW SERVICE ACCESS HATCH
07	NEW FREIGHT ELEVATOR PENTHOUSE REUSE AND MODIFY EXISTING PENTHOUSE
08	EXISTING SKYLIGHTS TO BE REMOVED AND REPLACED WITH ROOFING
09	STAIR PRESSURAZATION FAN



PREVIOUS ROOF PLAN



EXISTING VIEW OF 51 MELCHER FROM A ST

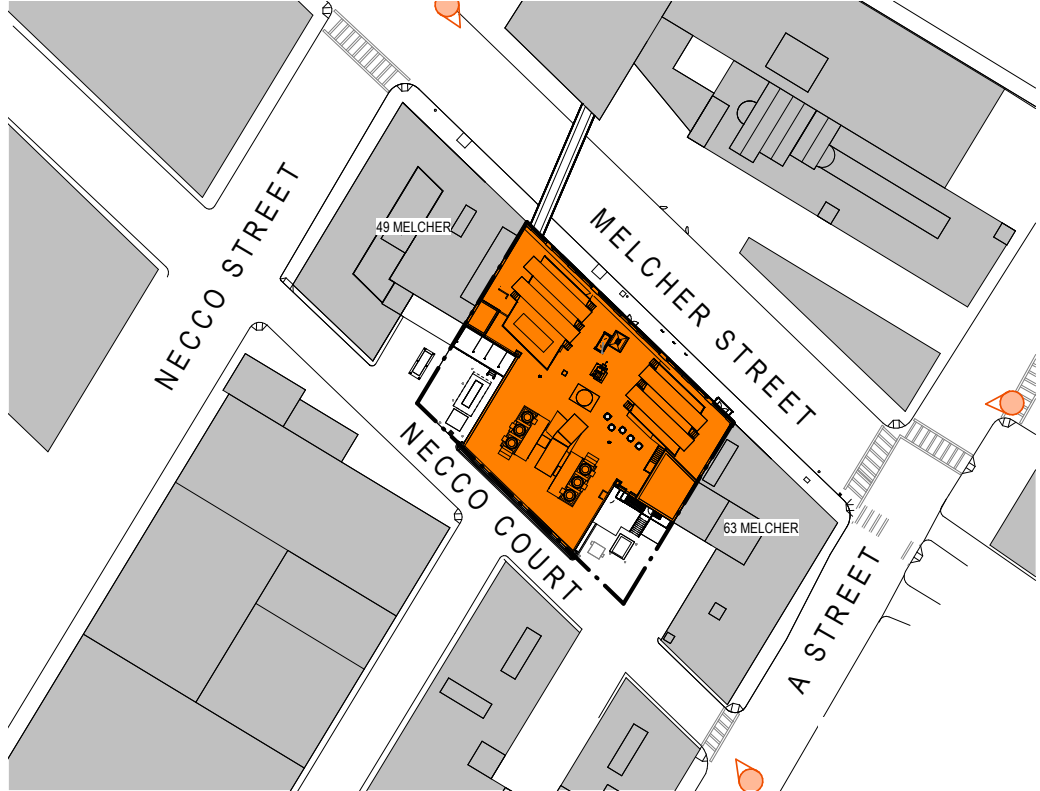


PROPOSED VIEW OF 51 MELCHER FROM A ST





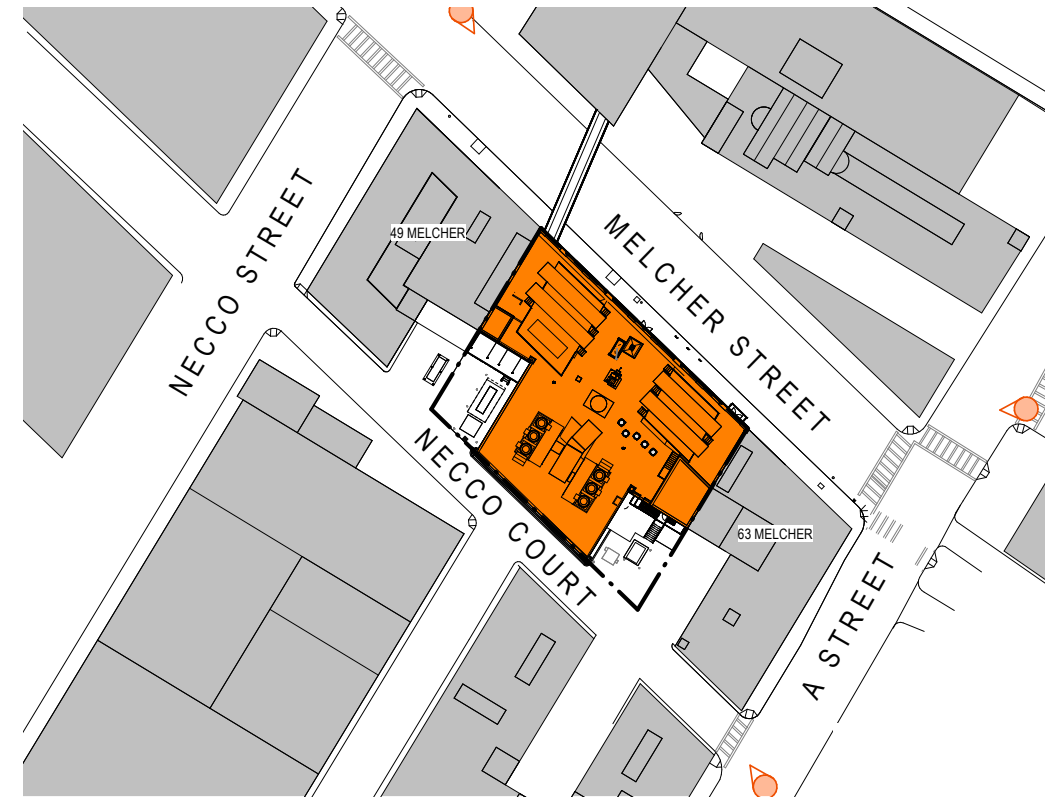
EXISTING VIEW OF 51 MELCHER FROM A ST



PROPOSED VIEW OF 51 MELCHER FROM A ST



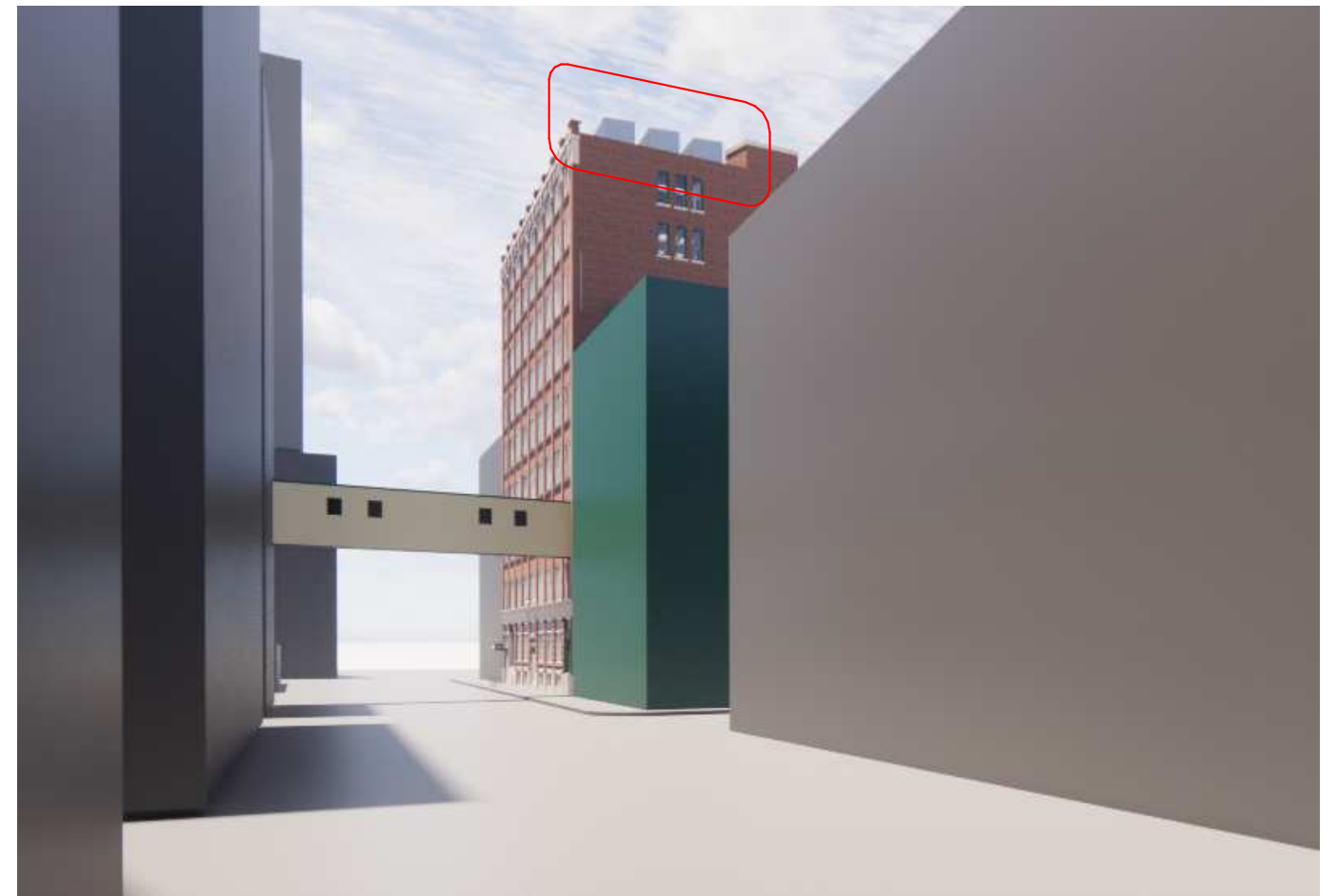
MELCHER ST. TOWARDS A STREET - PREVIOUSLY APPROVED



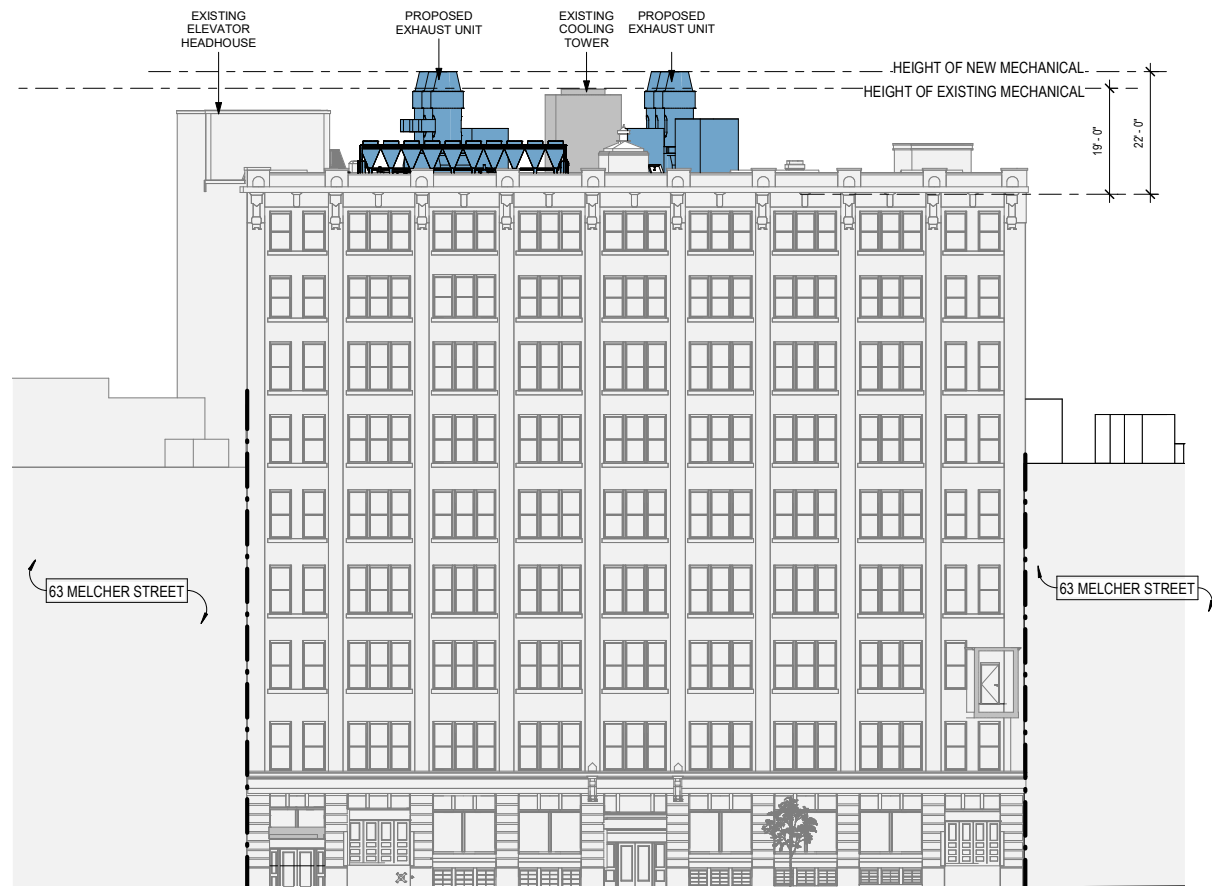
MELCHER ST TOWARDS A STREET - PROPOSED ASHP



MELCHER ST. TOWARDS A STREET - PREVIOUSLY APPROVED



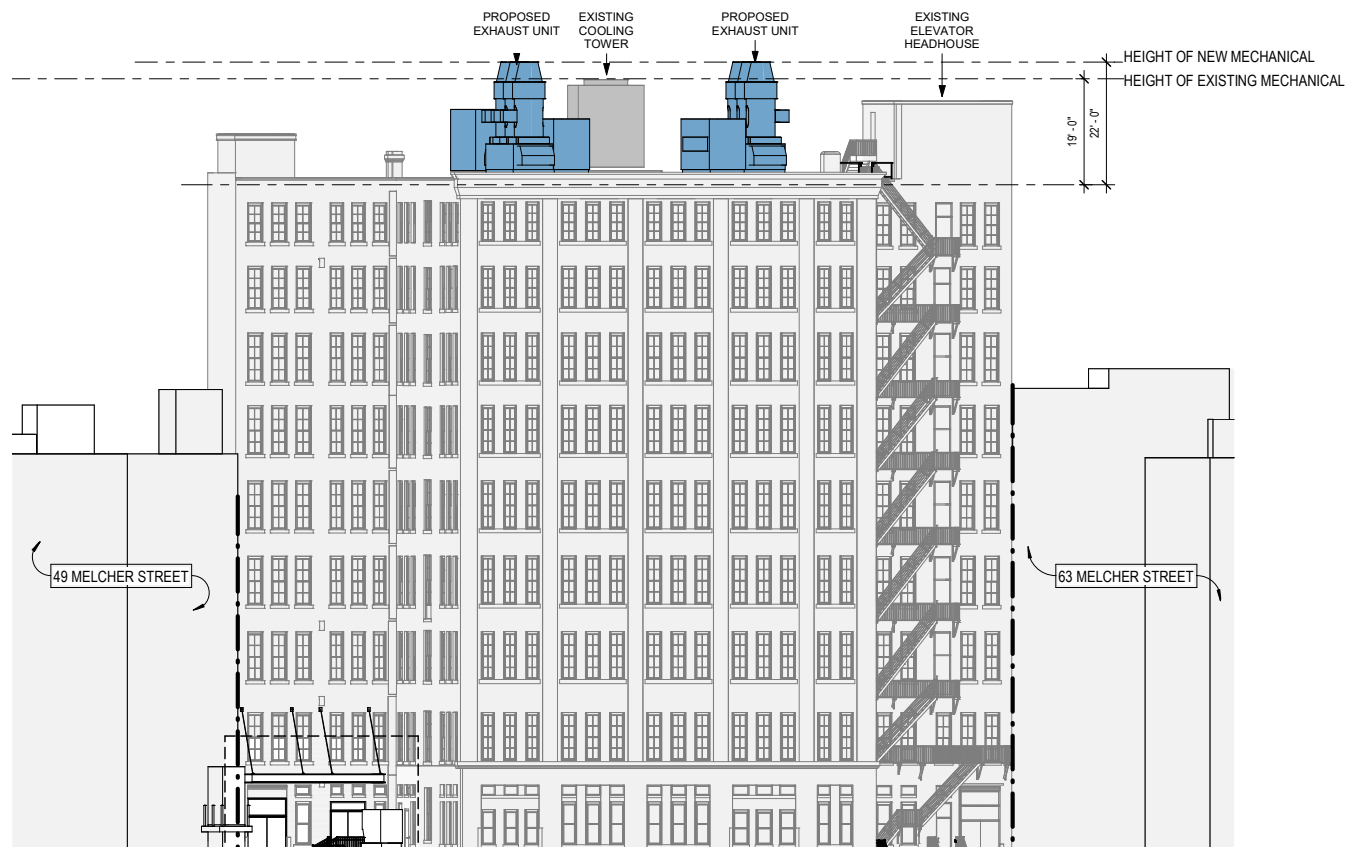
MELCHER ST TOWARDS A STREET - PROPOSED ASHP



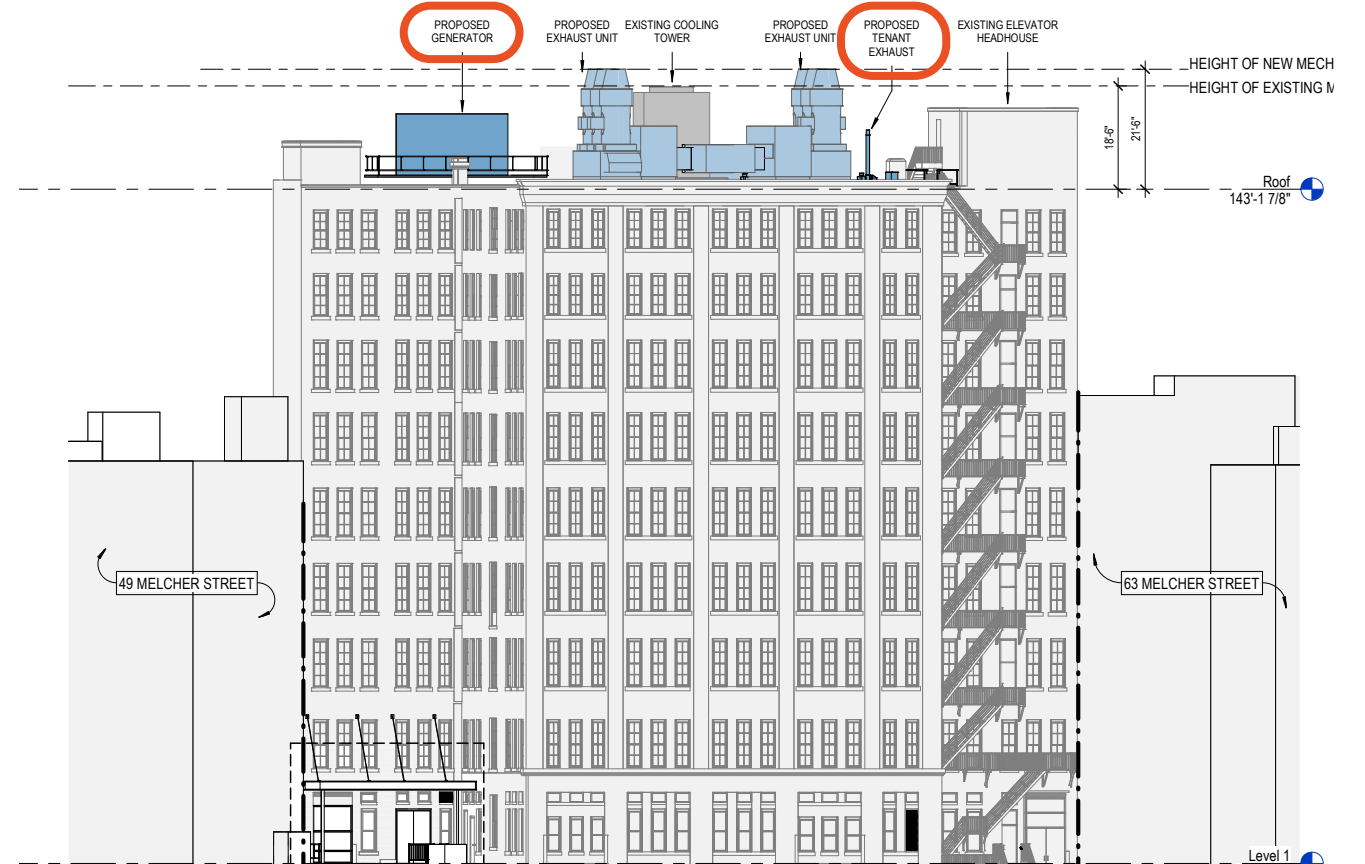
MELCHER ST. ELEVATION - PREVIOUSLY APPROVED



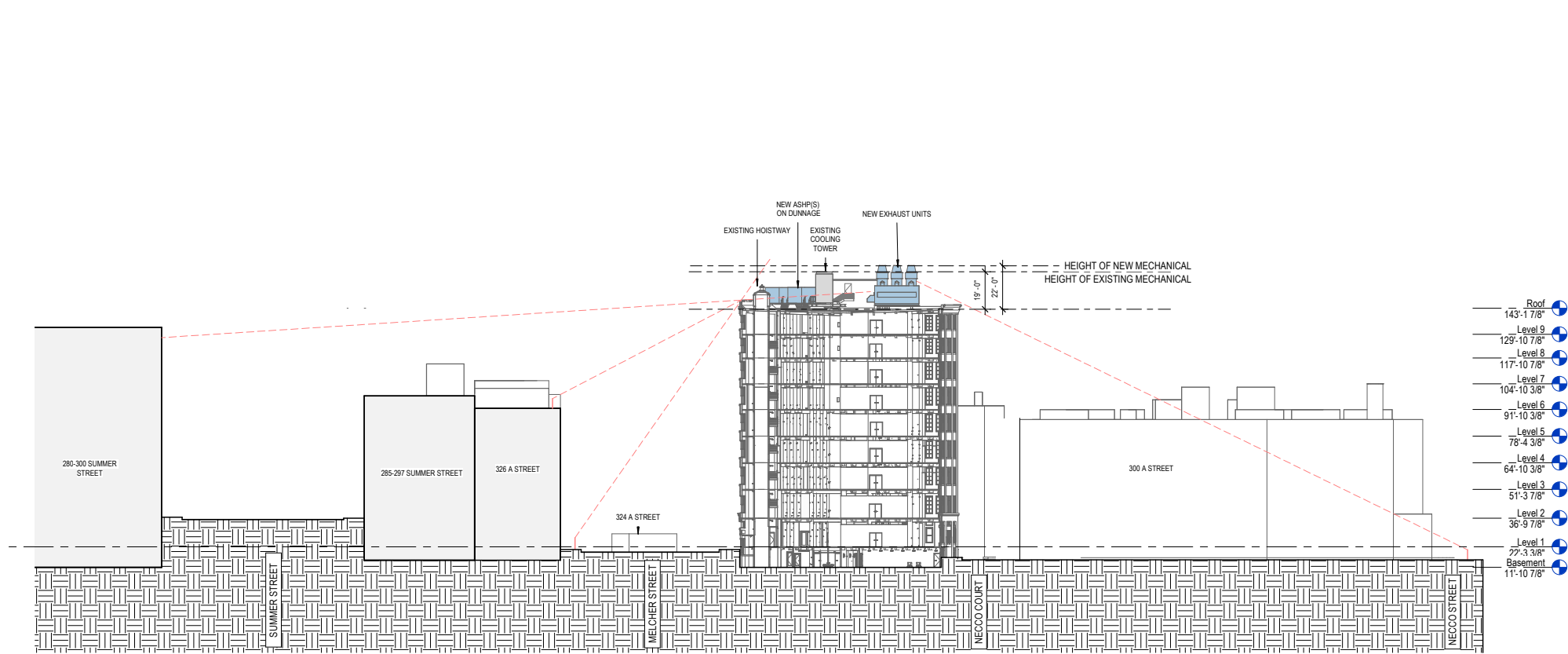
MELCHER STREET ELEVATION - UPDATED PROPOSED



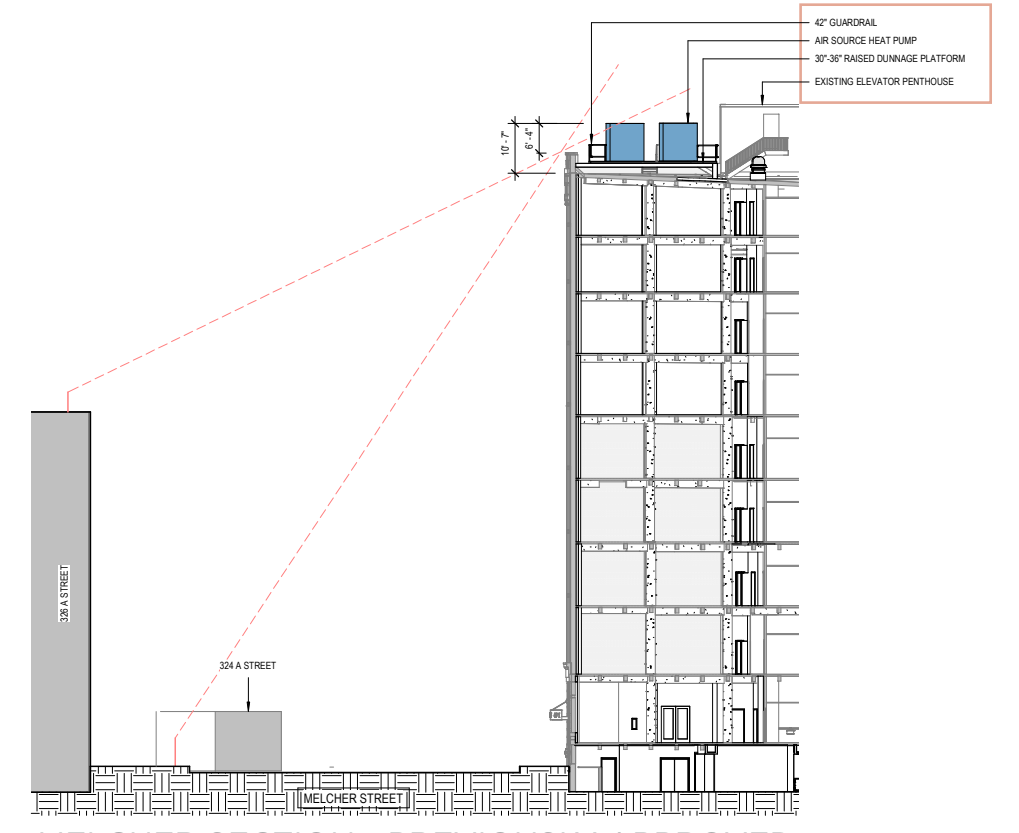
NECCO COURT ELEVATION - PREVIOUSLY APPROVED



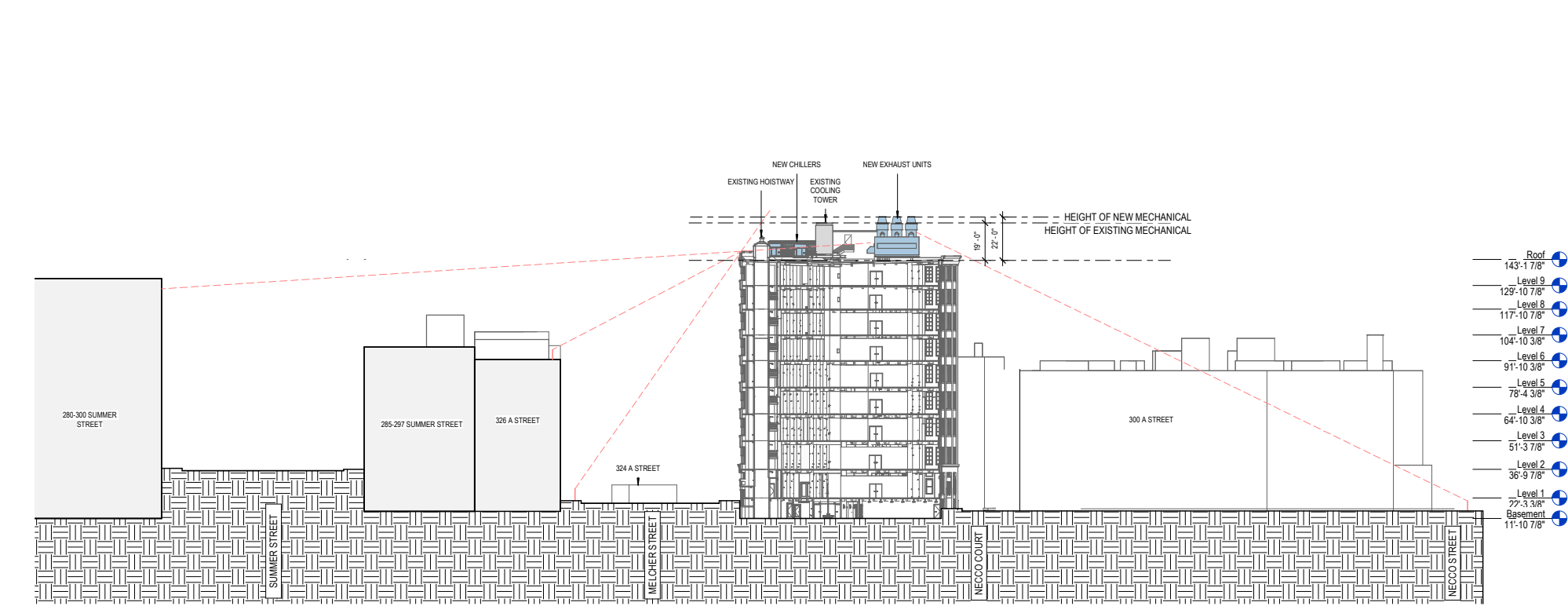
NECCO COURT ELEVATION - UPDATED PROPOSED



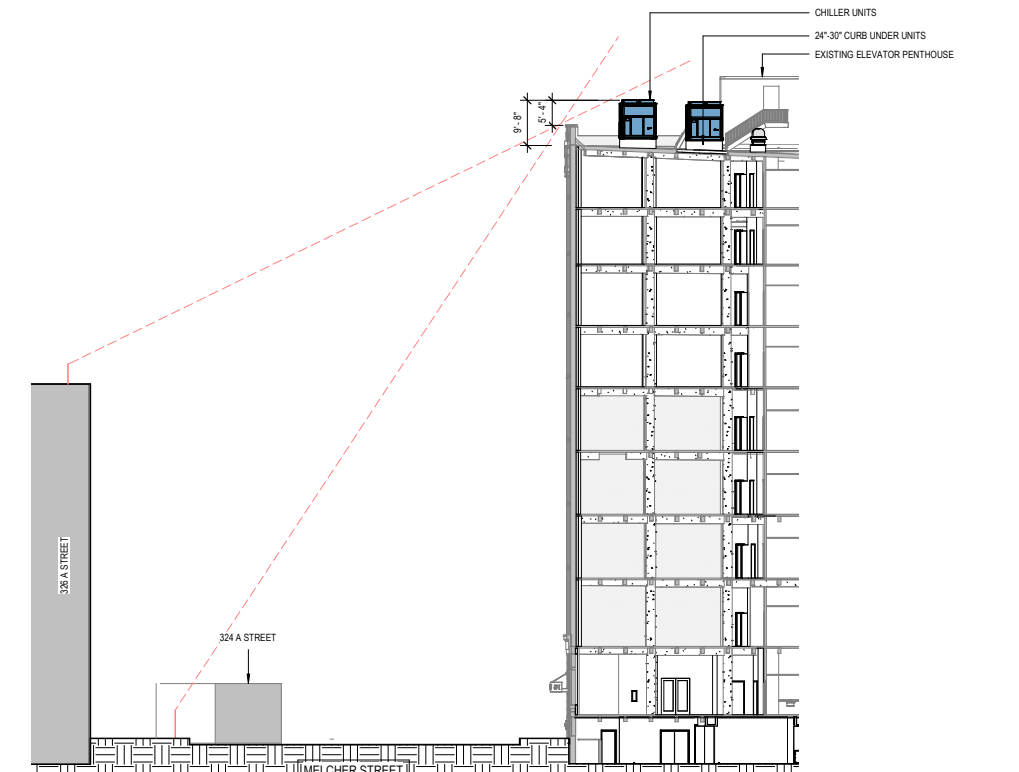
MELCHER TO NECCO COURT SITE SECTION - PREVIOUSLY APPROVED



MELCHER SECTION - PREVIOUSLY APPROVED



MELCHER TO NECCO COURT SITE SECTION - UPDATED PROPOSED



MELCHER SECTION - UPDATED PROPOSED

# AT GRADE UPDATES

## 1. AT GRADE EQUIPMENT

- **(1) ELECTRICAL SWITCH ADDED.**  
REASON: PER EVERSOURCE COORDINATION.
- **PROPOSED GENERATOR AND TRANSFORMER LOWERED.**  
REASON: DUE TO COORDINATION WITH BPDA/EVERSOURCE.






## 2. UPDATES

- **DOCK LEVELER ADDED AT REVITALIZED DOCK.**  
REASON: TO HELP WITH OFFLOADING AND EASE OF ACCESS.
- **CANOPY STRUCTURE CHANGE.**  
REASON: ADDED COLUMN AND REMOVED TIE RODS TO SIMPLIFY SUPPORT /  
REDUCE RENOVATIONS TO FACADE.
- **MISC WINDOW LOUVER CHANGES.**  
REASON: COORDINATION WITH ENGINEERING




**GROUND FLOOR EQUIPMENT SCHEDULE**

- 01 NEW EMERGENCY GENERATOR  
IN SAME LOCATION AS EXISTING
- 02 NEW TRANSFORMER (51 MELCHER)  
IN SAME LOCATION AS EXISTING
- 03 EXISTING TRANSFORMER  
FOR ADJACENT PROPERTY
- 04 EXISTING SWITCHGEAR  
FOR ADJACENT PROPERTY
- 05 REVITALIZED FREIGHT LOADING DOCK
- 06 EXISTING DOCK TO REMAIN

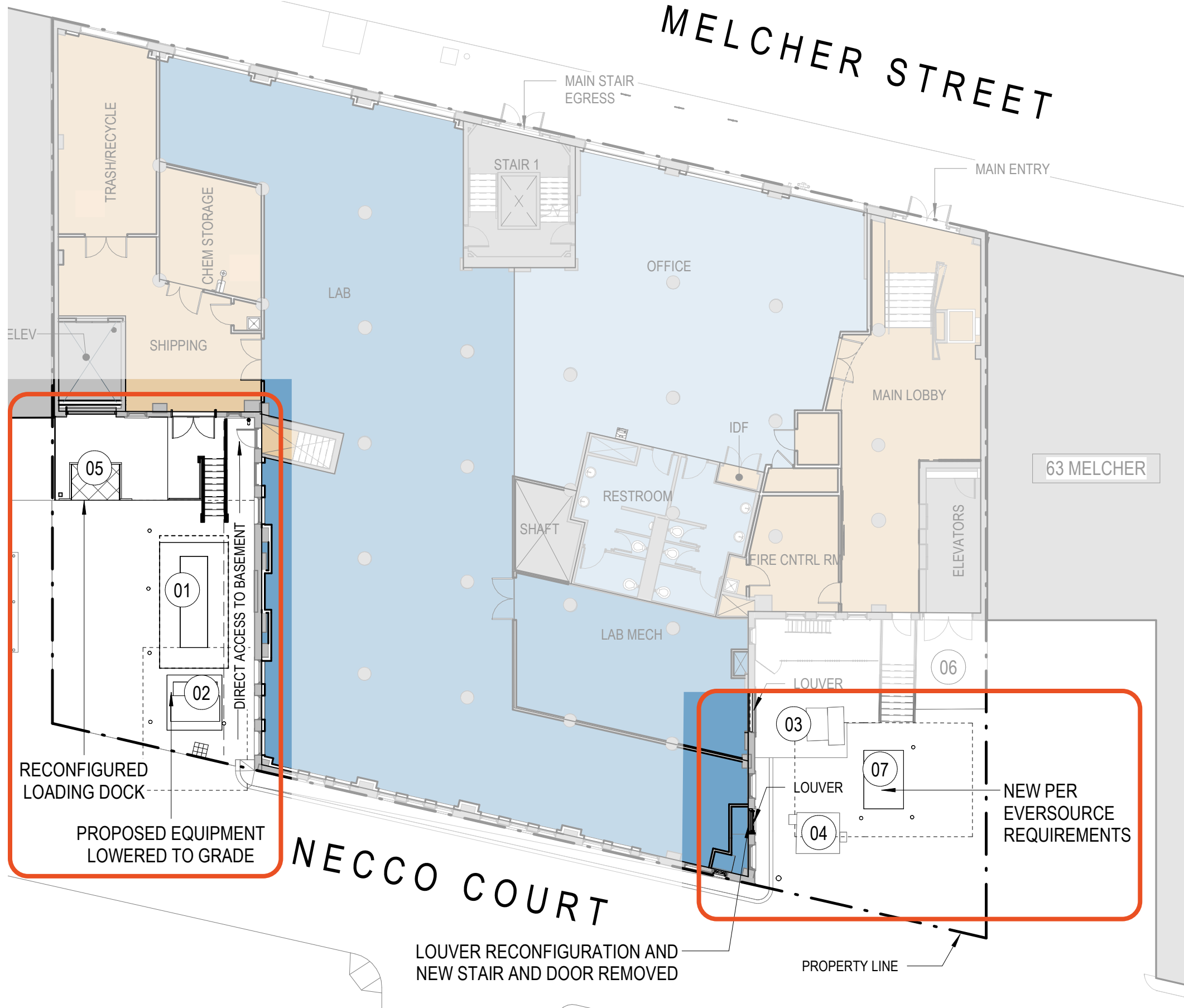
	BASE BUILDING
	LAB PROGRAM
	OFFICE PROGRAM
	AMENITY
	VERTICAL TRANSPORTATION / SHAFT

Scale: 1/16" = 1'-0"

0' 4' 8' 16' 32'



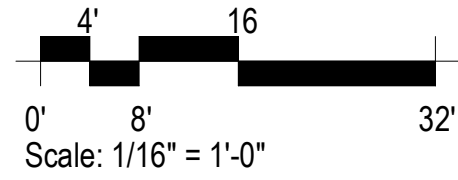
MELCHER STREET



**GROUND FLOOR EQUIPMENT SCHEDULE**

- 01 NEW EMERGENCY GENERATOR IN SAME LOCATION AS EXISTING
- 02 NEW TRANSFORMER (51 MELCHER) IN SAME LOCATION AS EXISTING
- 03 EXISTING TRANSFORMER FOR ADJACENT PROPERTY
- 04 EXISTING SWITCHGEAR FOR ADJACENT PROPERTY
- 05 REVITALIZED FREIGHT LOADING DOCK
- 06 EXISTING DOCK TO REMAIN
- 07 NEW SWITCHGEAR ON CONCRETE PAD

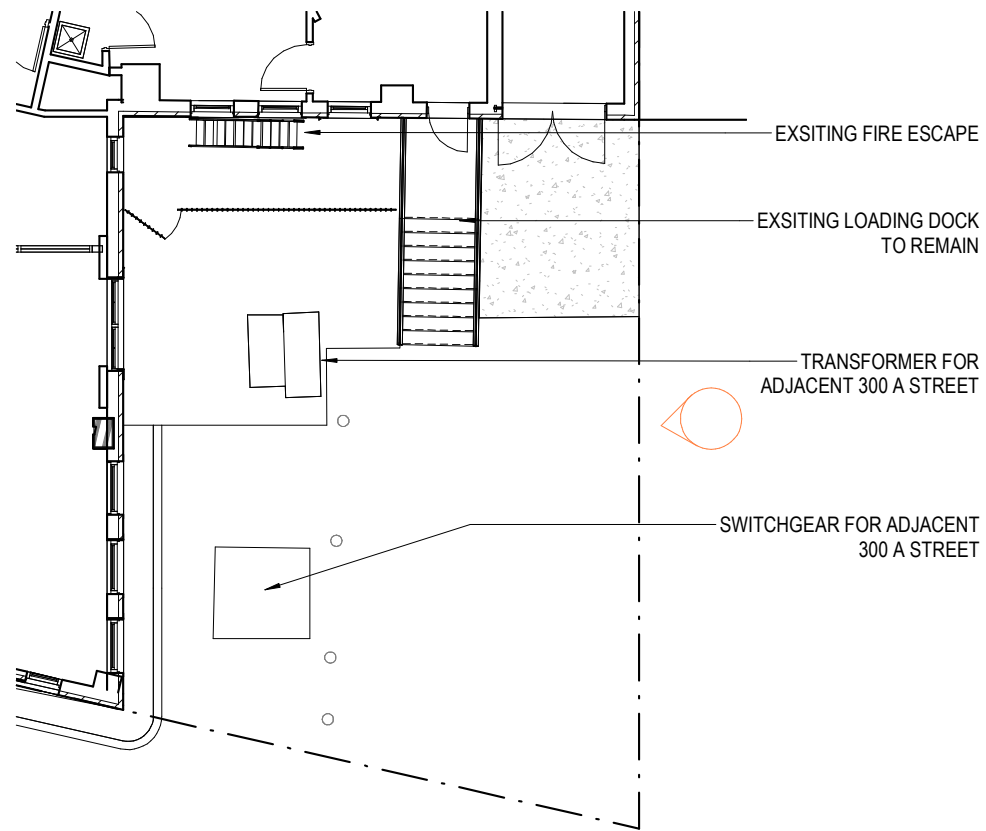
- BASE BUILDING
- LAB PROGRAM
- OFFICE PROGRAM
- AMENITY
- VERTICAL TRANSPORTATION / SHAFT



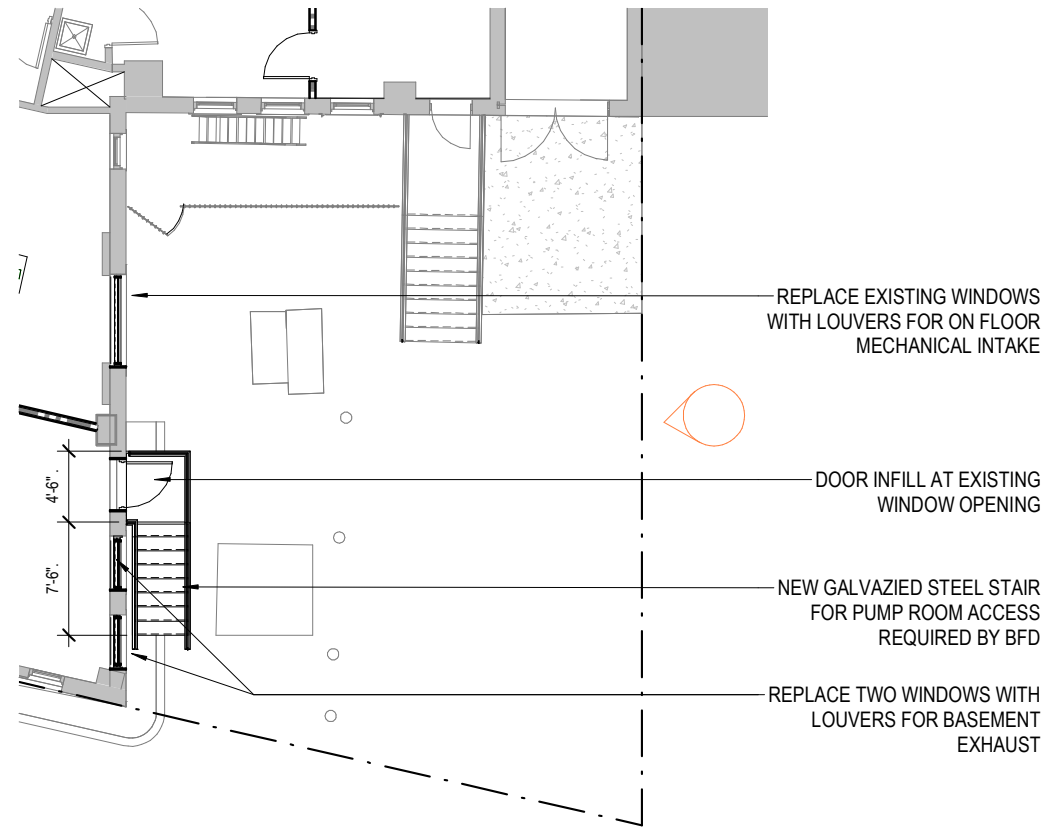
RECONFIGURED LOADING DOCK  
 PROPOSED EQUIPMENT LOWERED TO GRADE

NEW PER EVERSOURCE REQUIREMENTS

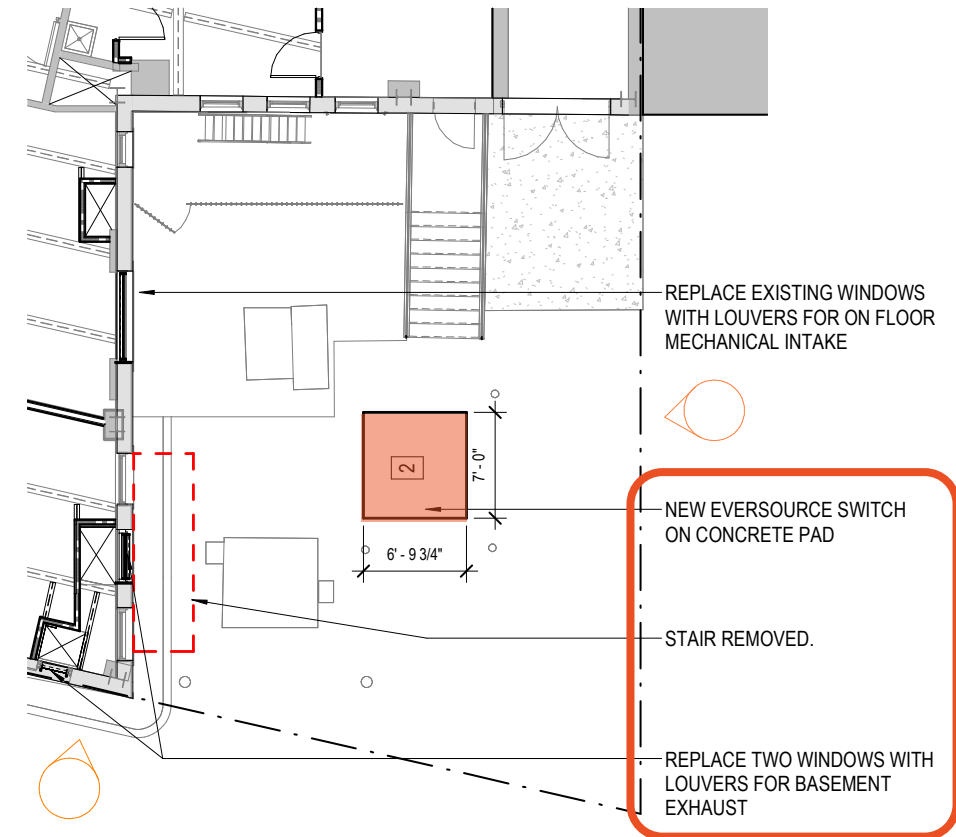
LOUVER RECONFIGURATION AND NEW STAIR AND DOOR REMOVED



EXISTING PLAN - SOUTH DOCK



APPROVED PLAN 03/10/22 - SOUTH DOCK



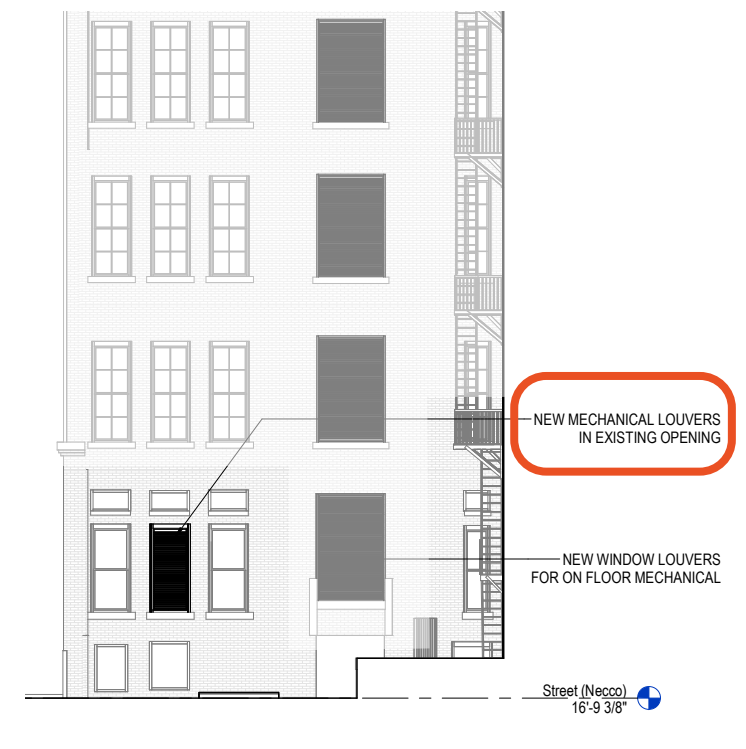
UPDATED PROPOSED PLAN - SOUTH DOCK



EXISTING ELEVATION - SOUTH DOCK

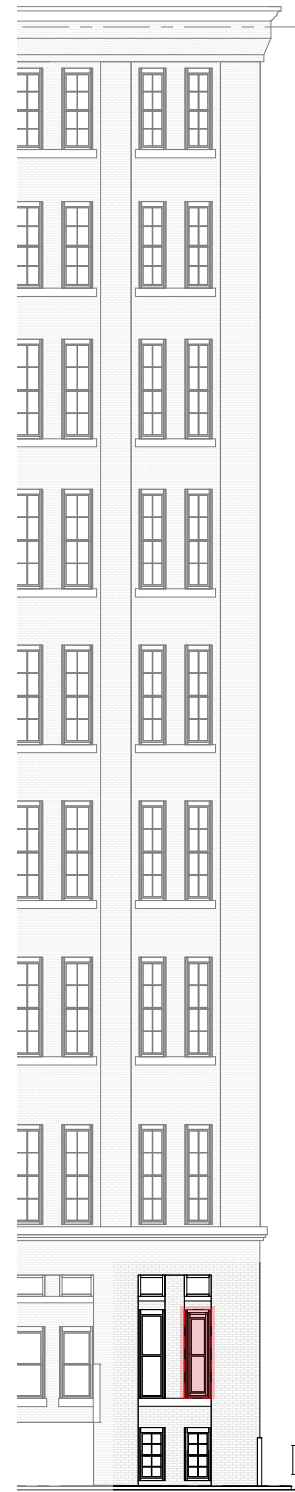


APPROVED ELEVATION 03/10/22 - SOUTH DOCK

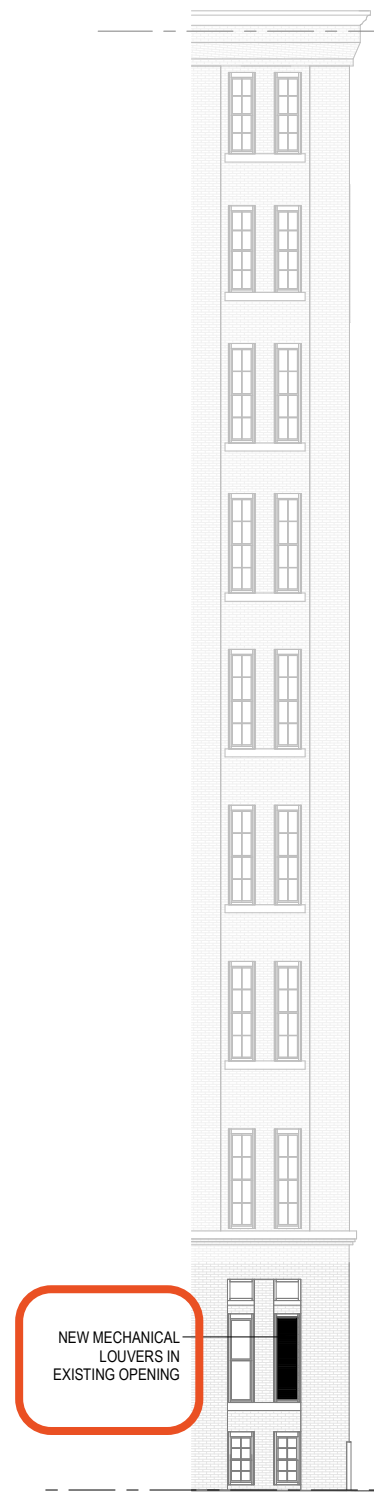


UPDATED PROPOSED ELEVATION - SOUTH DOCK





EXISTING ELEVATION - SOUTH DOCK



PROPOSED ELEVATION - SOUTH DOCK

NEW MECHANICAL LOUVERS IN EXISTING OPENING

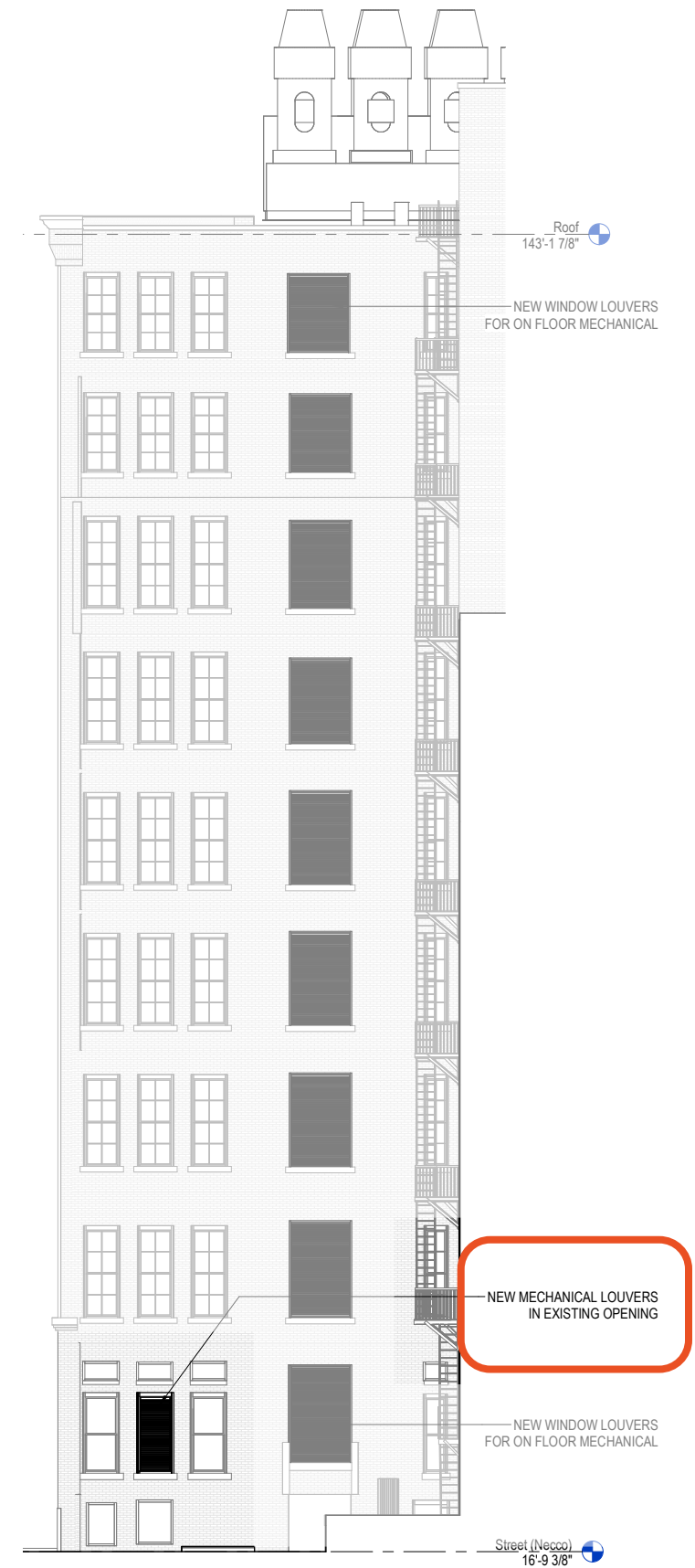


EXISTING ELEVATION - SOUTH DOCK

ONE OPENING ON EACH FLOOR TO BE REPLACED WITH LOUVER FOR ON FLOOR MECHANICAL INTAKE

ONE OPENING ON EACH FLOOR TO BE REPLACED WITH LOUVER FOR ON FLOOR MECHANICAL INTAKE

WINDOW TO BE INFILLED WITH LOUVERS  
(2) WINDOWS NOT BEING REMOVED



PROPOSED ELEVATION - SOUTH DOCK

NEW WINDOW LOUVERS FOR ON FLOOR MECHANICAL

NEW MECHANICAL LOUVERS IN EXISTING OPENING

NEW WINDOW LOUVERS FOR ON FLOOR MECHANICAL



EXISTING VIEW OF 51 MELCHER FROM NECCO CT

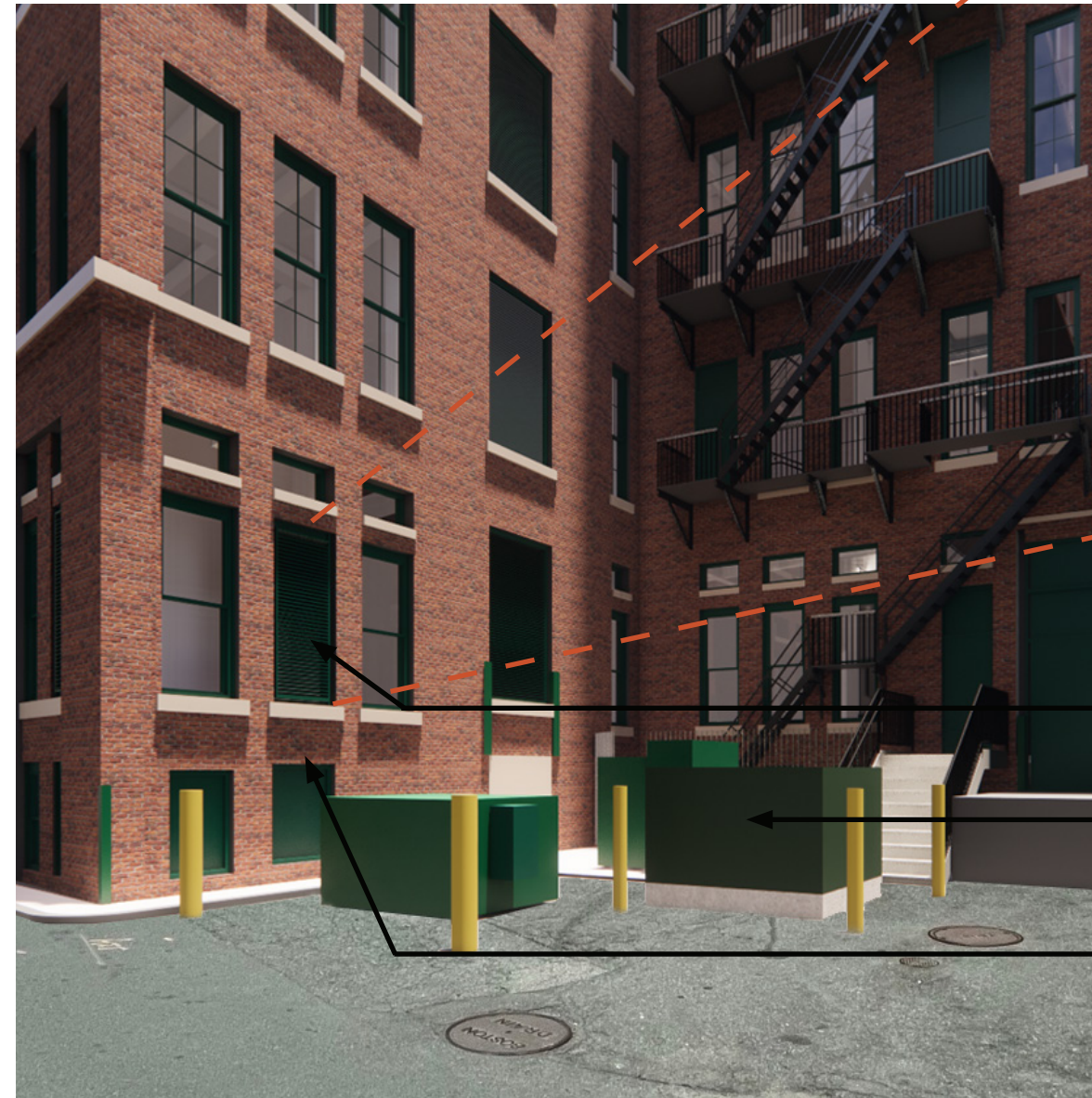


PREVIOUSLY APPROVED VIEW OF 51 MELCHER FROM NECCO CT



LOUVER EXAMPLE

LOUVER EXAMPLE



- NEW LOUVER
- NEW SWITCH (PER EVERSOURCE)
- STAIR AND DOOR REMOVED

EXISTING VIEW OF 51 MELCHER FROM NECCO CT

PROPOSED VIEW OF 51 MELCHER FROM NECCO CT



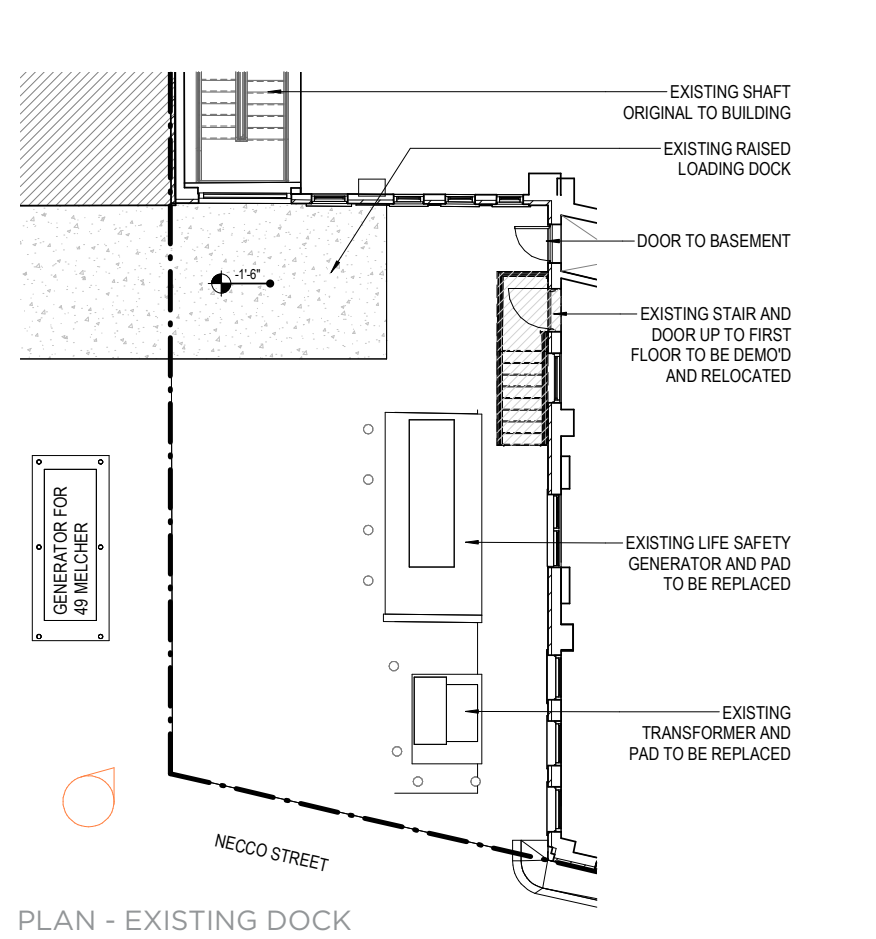
EXISTING VIEW OF 51 MELCHER FROM A ST

PREVIOUSLY APPROVED VIEW OF 51 MELCHER FROM A ST

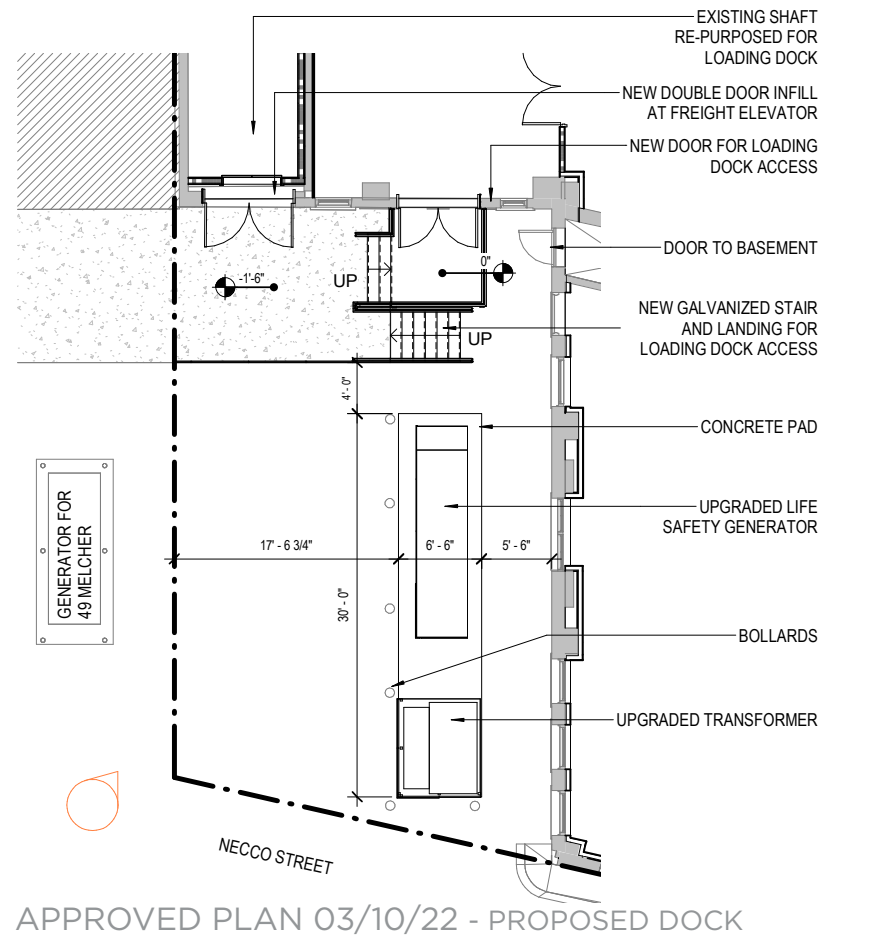


EXISTING VIEW OF 51 MELCHER FROM A ST

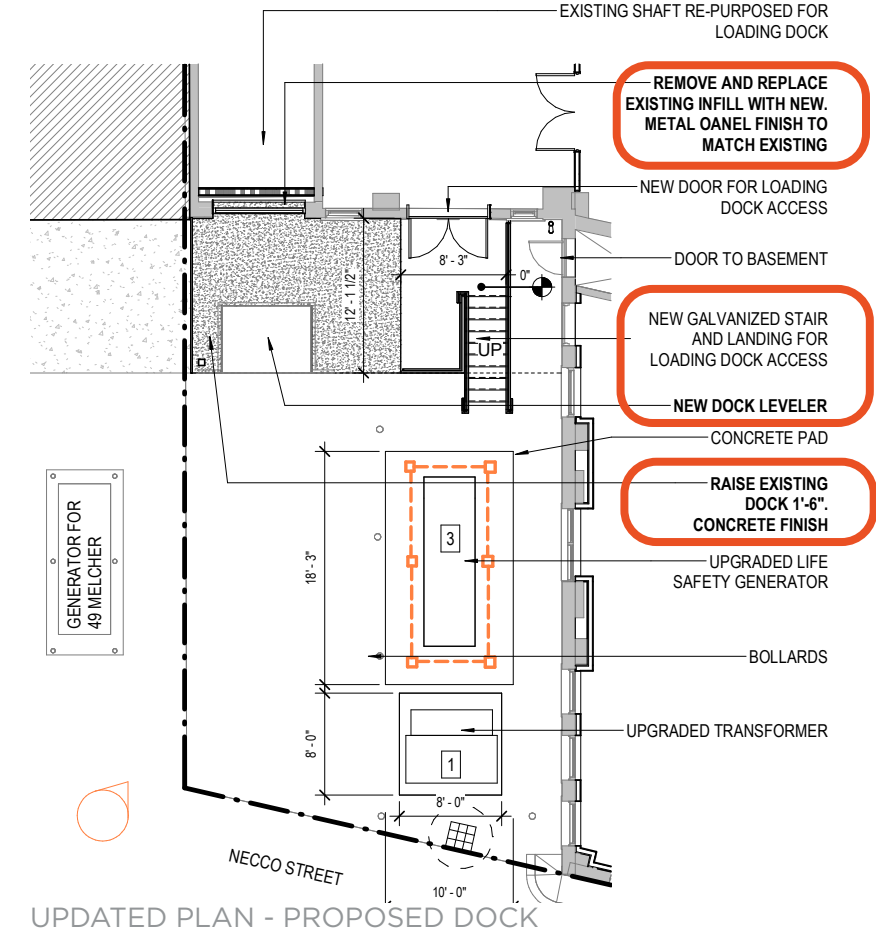
PROPOSED VIEW OF 51 MELCHER FROM A ST



PLAN - EXISTING DOCK



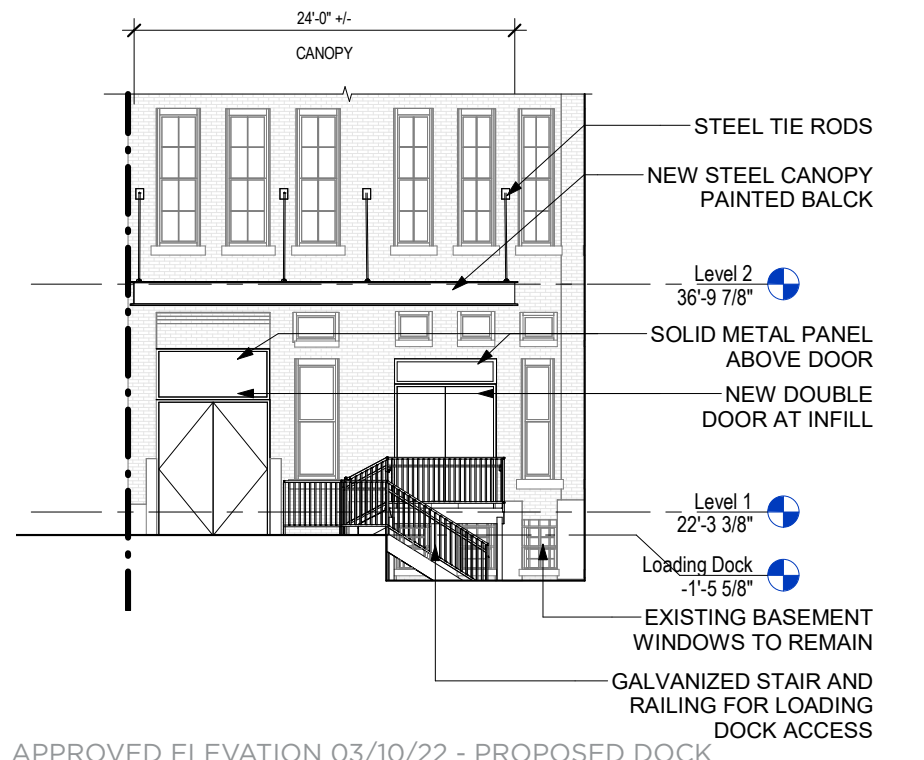
APPROVED PLAN 03/10/22 - PROPOSED DOCK



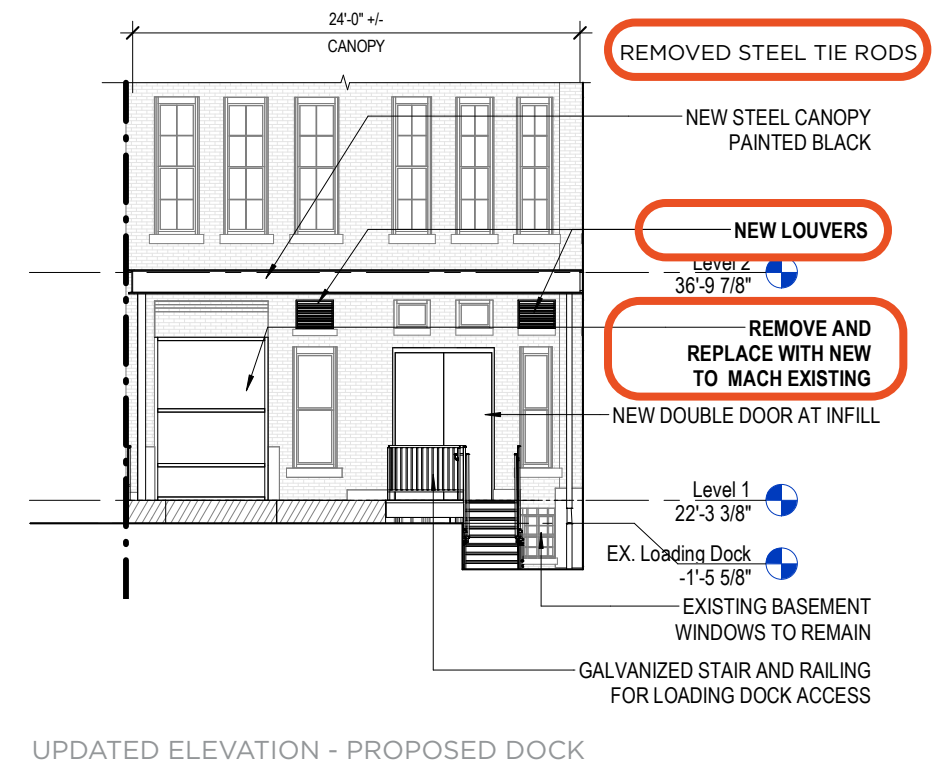
UPDATED PLAN - PROPOSED DOCK



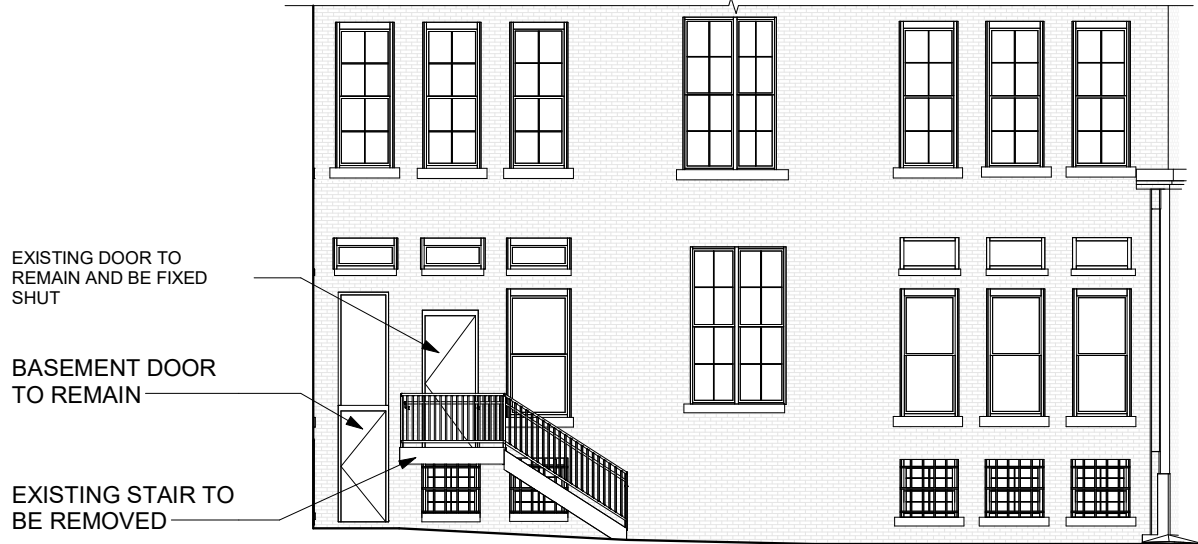
ELEVATION - EXISTING DOCK



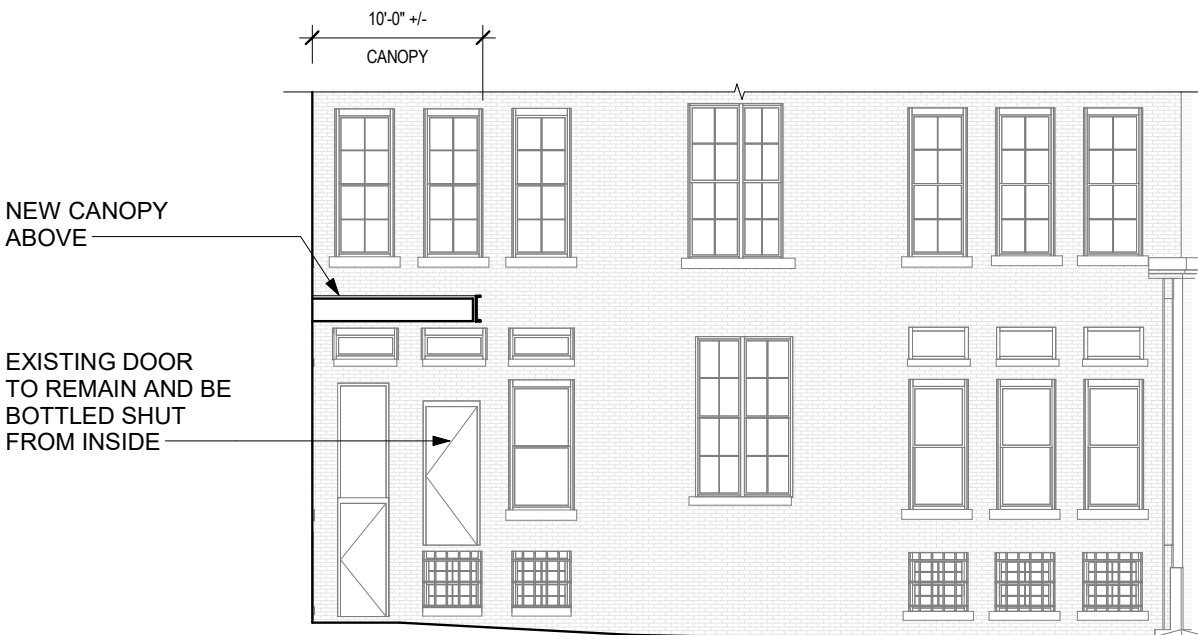
APPROVED ELEVATION 03/10/22 - PROPOSED DOCK



UPDATED ELEVATION - PROPOSED DOCK



SIDE ELEVATION - EXISTING



APPROVED ELEVATION 03/10/22 - PROPOSED



SIDE ELEVATION - UPDATED PROPOSED



EXISTING VIEW OF 51 MELCHER FROM NECCO COURT



EXISTING VIEW WITH HIDDEN GENERATOR



PREVIOUSLY APPROVED VIEW OF 51 MELCHER FROM NECCO COURT



PREVIOUSLY APPROVED VIEW WITH HIDDEN GENERATOR





EXISTING VIEW OF 51 MELCHER FROM NECCO COURT



EXAMPLE 1



PROPOSED VIEW OF 51 MELCHER FROM NECCO COURT

- REMOVE TIE RODS, ADDED CANOPY COLUMN
- NEW DOCK LEVELER
- NEW RAISED DOCK
- UPDATED RAILING/STAIR SCHEME
- GENERATOR AND TRANSFORMER LOWERED DOWN TO GRADE



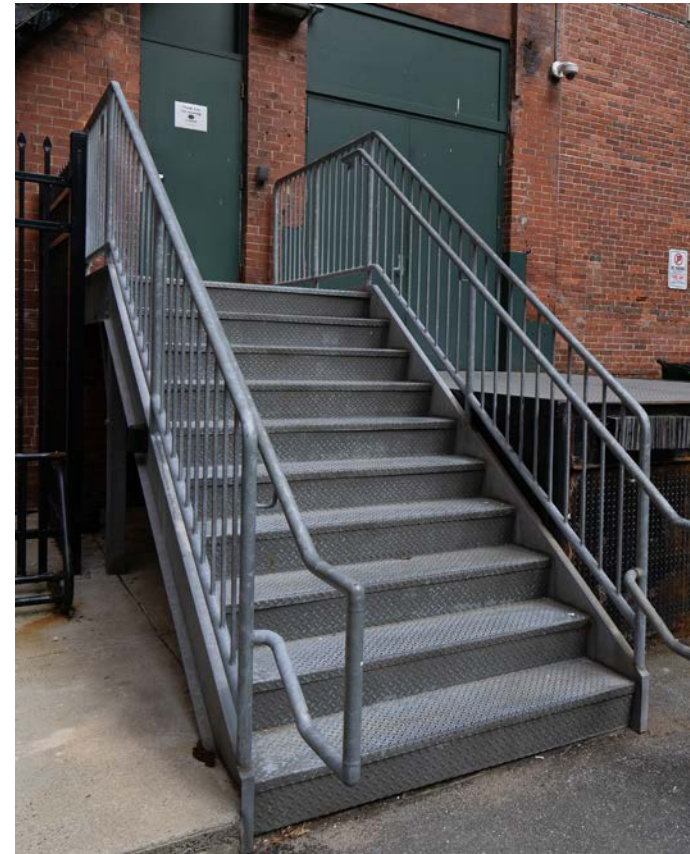
EXAMPLE 2



EXISTING INFILL TO BE REPLACED WITH DOOR



WINDOWS TO BE REMOVED. BASEMENT WINDOWS TO BE PARTIALLY COVERED



GALVANIZED STAIR - EXISTING



EXAMPLE OF STEEL CANOPY



EXISTING STAIR TO BE REMOVED



EXISTING STEEL COVER PLATES TO BE PARTIALLY HIDDEN



EXAMPLE OF NEW GALVANIZED STAIR

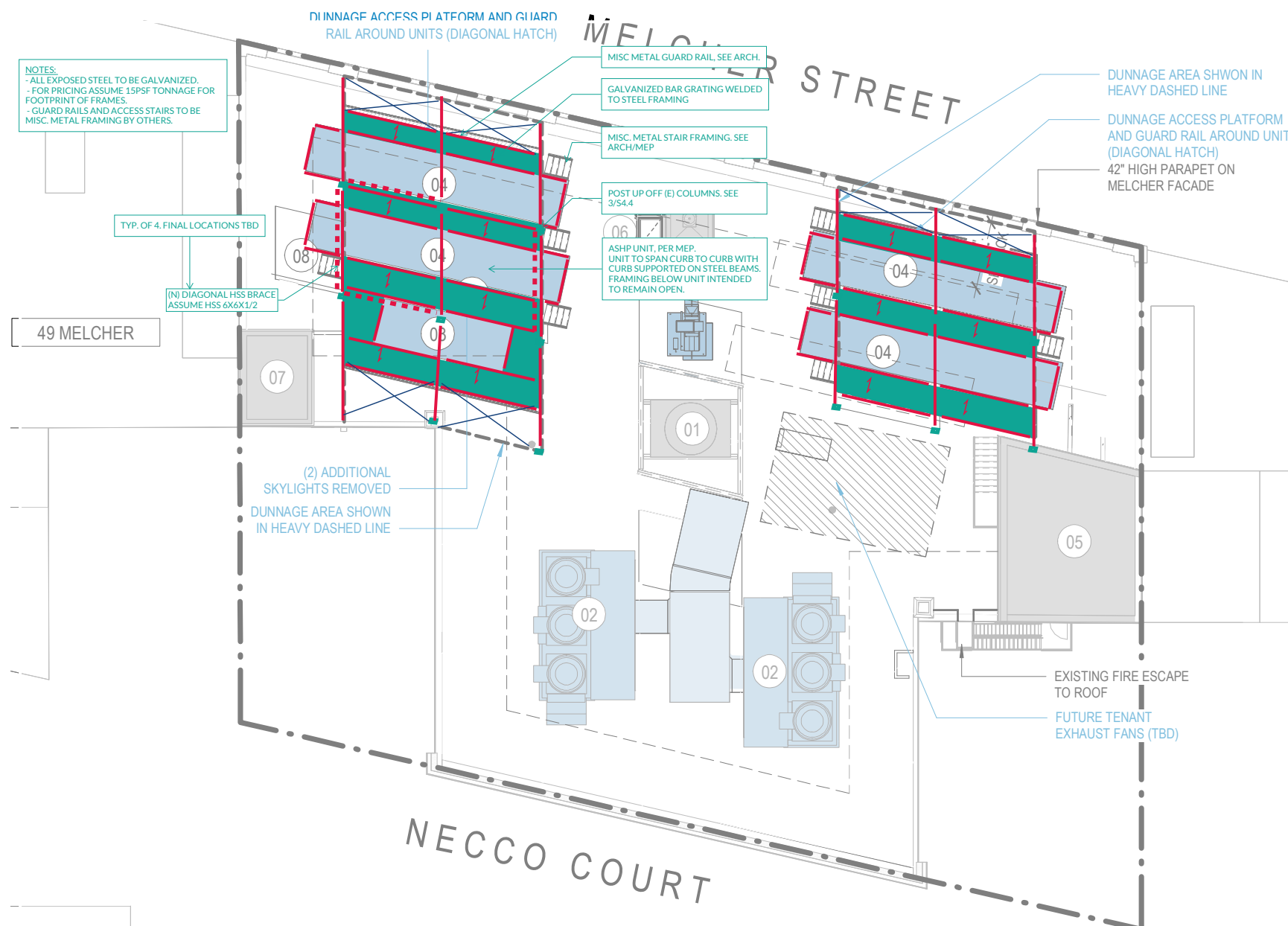


EXAMPLE OF METAL PANEL INFILL AND DOORS

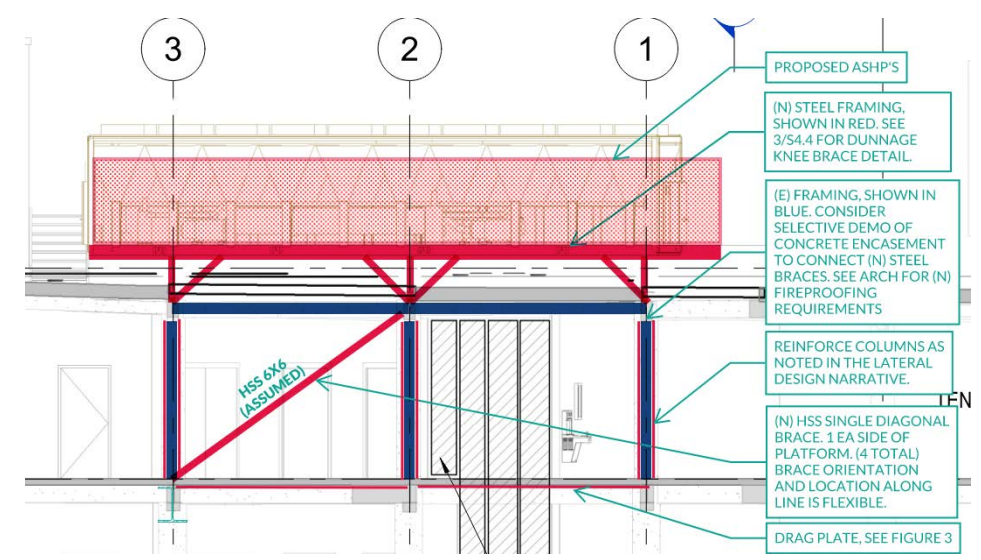


# 5. NEXT STEPS AND QUESTIONS

# APPENDIX IMAGES



DUNNAGE AND STAIR PLATFORM EXAMPLES

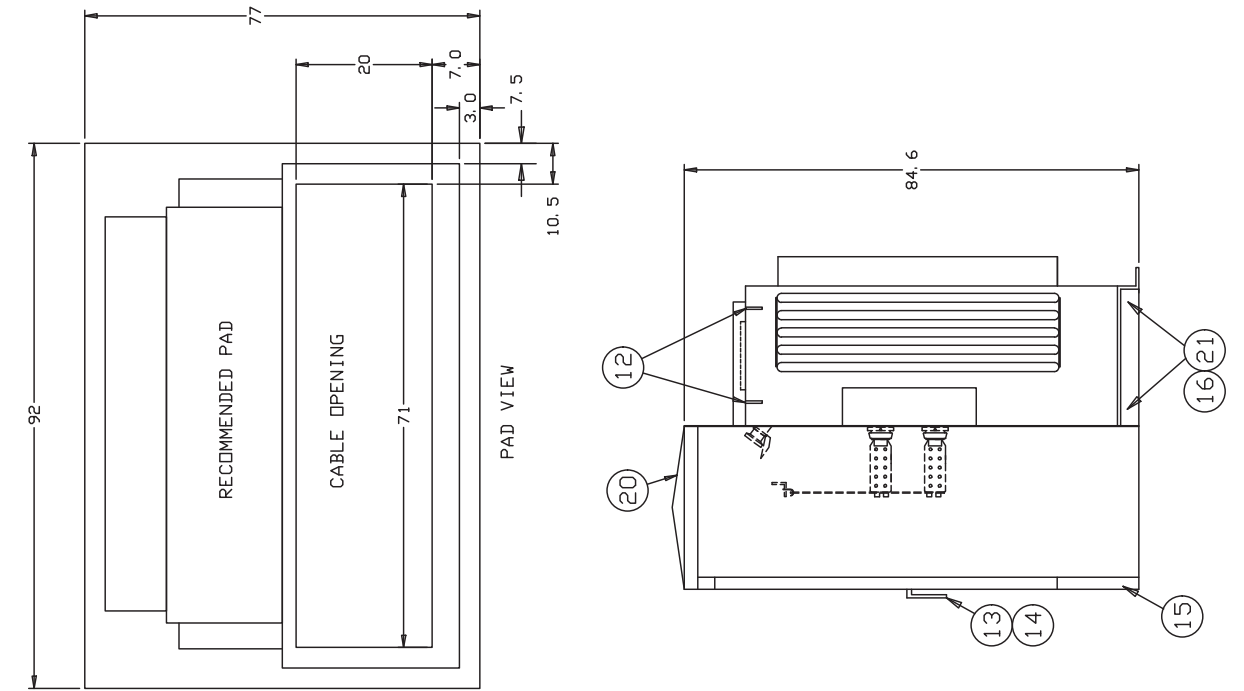




EXISTING EVERSOURCE TRANSFORMER



EVERSOURCE TRANSFORMER: PREVIOUSLY APPROVED



EXISTING GENERATOR



GENERATOR: PREVIOUSLY APPROVED (GENERATOR TO RECEIVE CUSTOM PAINT TO MATCH TRANSFORMER GREEN)

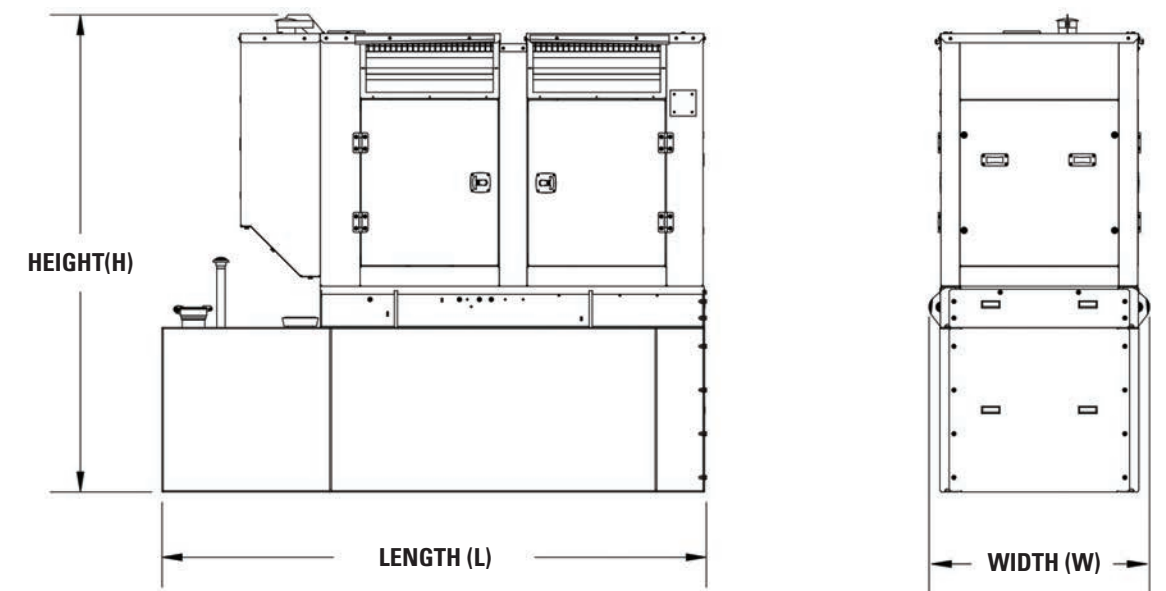


Image represents SA Level 1, SA Level 2 and SA Aluminum enclosures mounted on optional UL listed sub base tank

Engine Model	Generator Set Rating ekW	Enclosure	402 Gallon Sub Base Tank		777 Gallon Sub Base Tank		mm	in	mm	in				
			Length 'L'	Height 'H'	Length 'L'	Height 'H'								
			mm	in	mm	in	mm	in	mm	in				
C7.1	125	WP	4035	158.9	2420	95.3	5035	198.2	2706	106.5				
	150													
	175													
	200	SA Level 1, SA Level 2 and SA Aluminum			2499	98.4					5035	198.2	2785	106.5
	125													
	150													
175														
200														

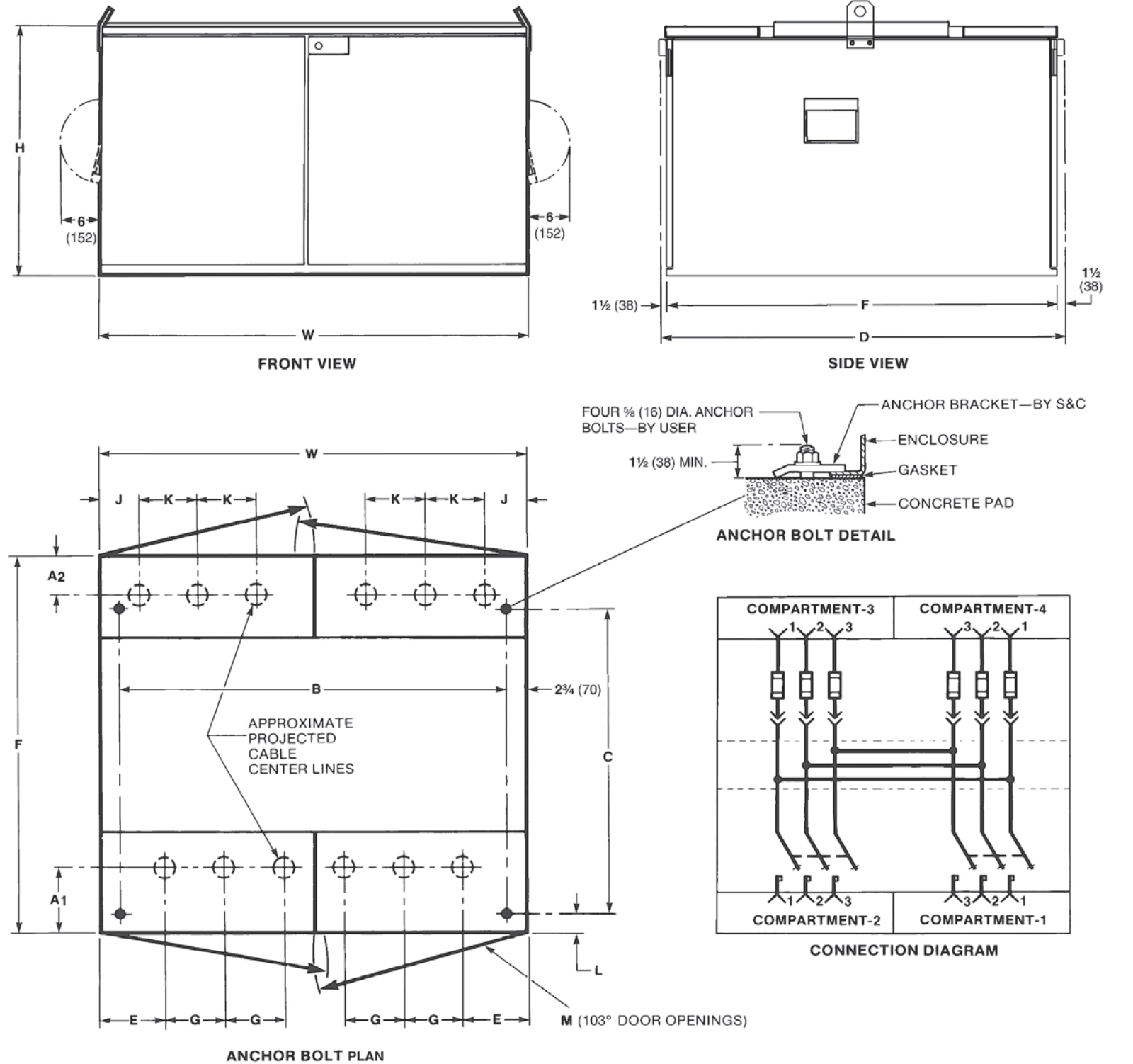
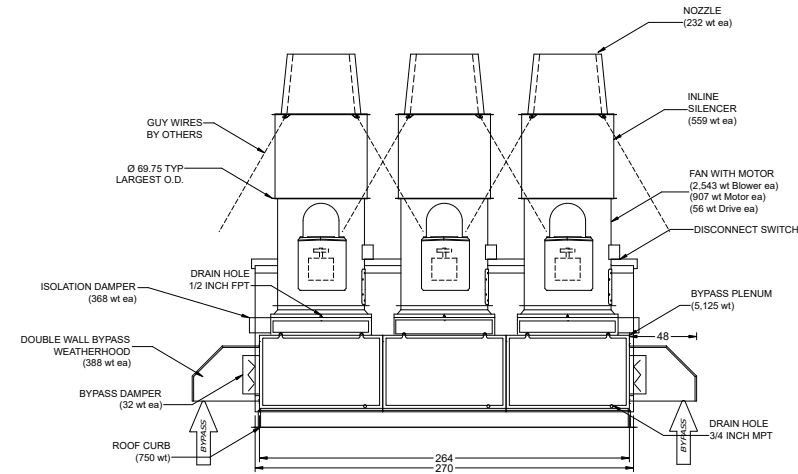


Table 20. Model PME-9 Dimensions

kV, Nominal	A <sub>1</sub> ◆	A <sub>2</sub> ◆	B	C	D	E	F	G	H	J	K	L	M	W
14.4	14 1/2 (368)	7 (178)	69 1/2 (1765)	49 1/2 (1257)	69 3/4 (1772)	12 3/8 (314)	66 3/4 (1695)	8 1/4 (210)	45 1/2 (1156)	5 3/8 (137)	10 3/4 (273)	8 5/8 (219)	38 (965)	75 (1905)
25	18 1/2 (470)	8 1/8 (206)	78 1/2 (1994)	52 (1321)	84 3/4 (2153)	12 7/8 (327)	81 1/4 (2076)	8 1/4 (210)	51 1/2 (1308)	6 (152)	12 (305)	14 7/8 (378)	42 1/2 (1080)	84 (2134)

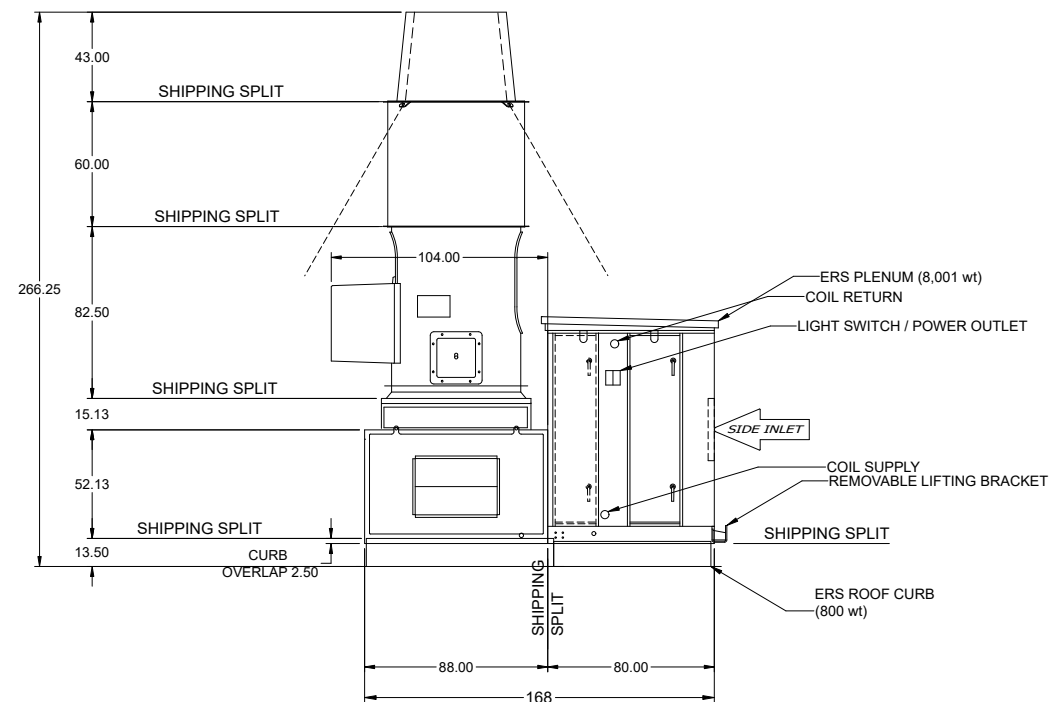
Model: VEKTOR-MH-40-9-85

Fume Exhaust System



WEIGHT TOTALS	
FAN ASSEMBLY	4,297
FAN QTY	x3
PLENUM ASSEMBLY	7,069
ERS PLENUM	8,001
ROOF CURB TOTAL	1,550
SYSTEM TOTAL	29,511

WEIGHTS REFERENCED FROM ALL VIEWS

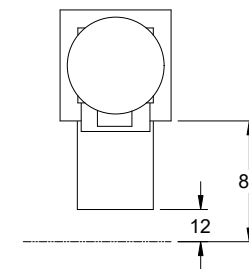
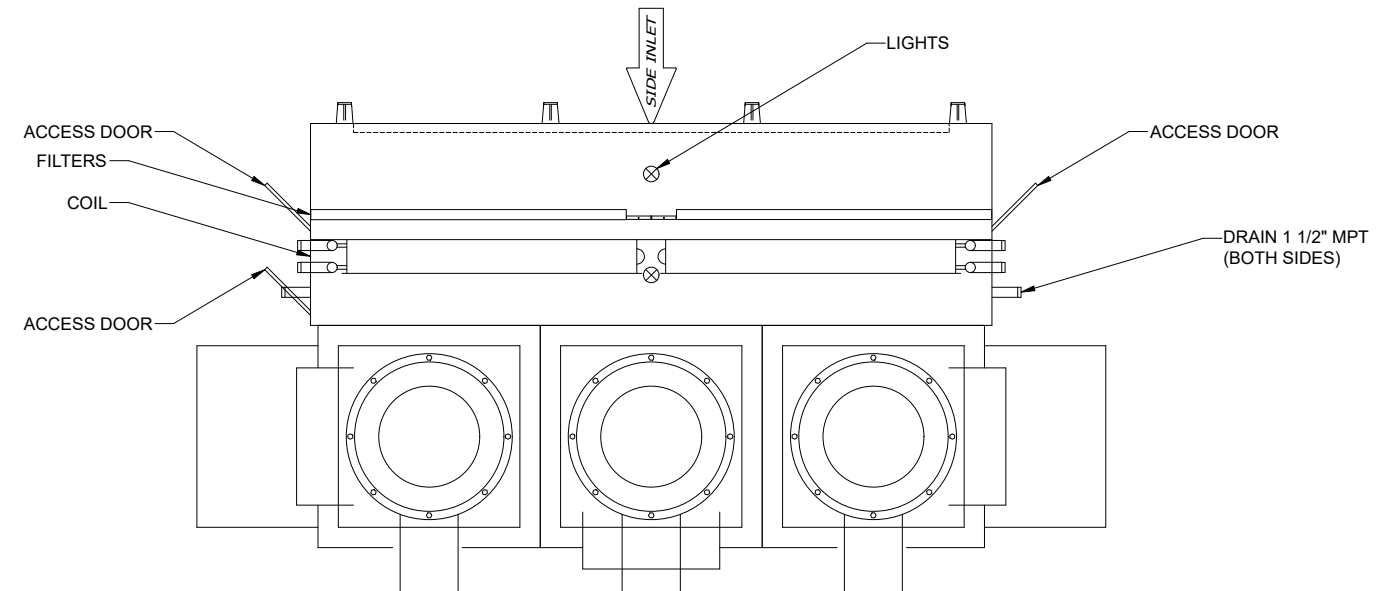


Notes: All dimensions shown are in units of in. and weights are shown in units of lb. Drawings are of standard unit and do not include dimensions for accessories or design modifications.

C:\Users\mhalley\Desktop\Work Desktop\Bala - 51 Melcher Street ERU.gfcj  
Generated by: mhalley@buckleyonline.com

Model: VEKTOR-MH-40-9-85

Fume Exhaust System



A MINIMUM OF 88 INCHES FROM EDGE OF PLENUM TO ALLOW THE REMOVAL OF THE ISOLATION DAMPER OR 12 INCHES FROM THE FARTHEST POINT STICKING PAST UNIT FOR A CLEAR WALKWAY (WHICH EVER IS GREATER) IS RECOMMENDED.

Notes: All dimensions shown are in units of in. and weights are shown in units of lb. Drawings are of standard unit and do not include dimensions for accessories or design modifications.

C:\Users\mhalley\Desktop\Work Desktop\Bala - 51 Melcher Street ERU.gfcj  
Generated by: mhalley@buckleyonline.com





Job Name: 51 Melcher  
Prepared For:

Unit Tag: ACSA230, ACSA230-1, ACSA230-2  
Quantity: 3

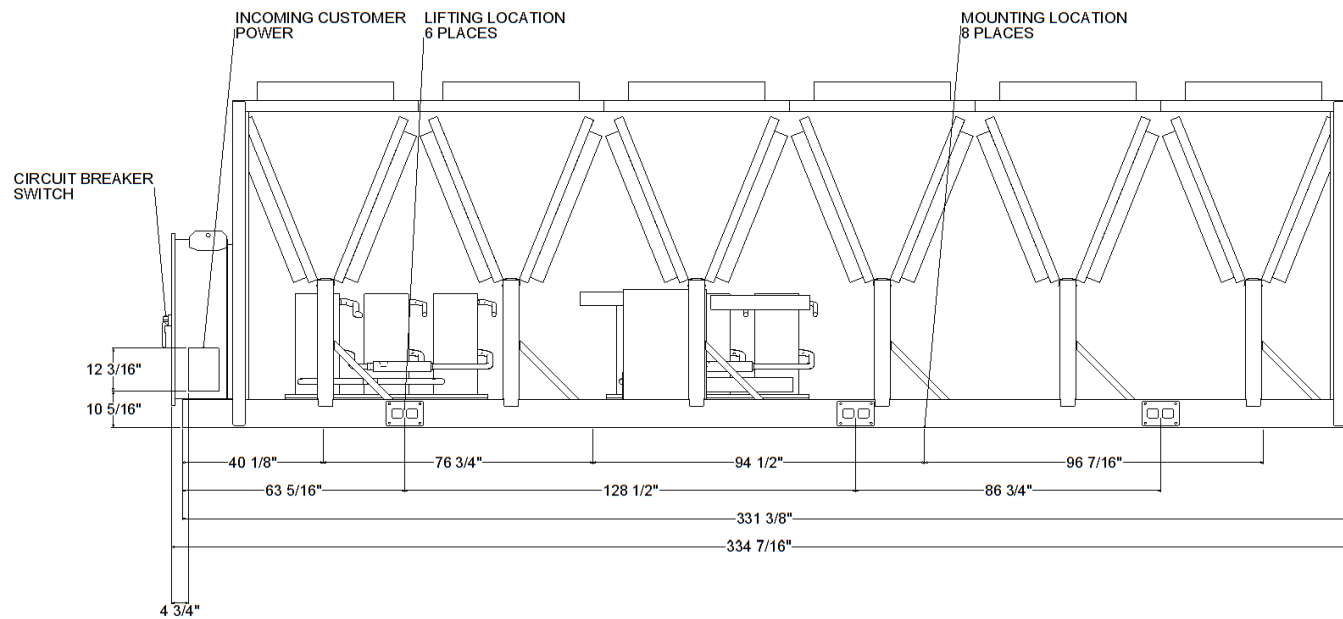
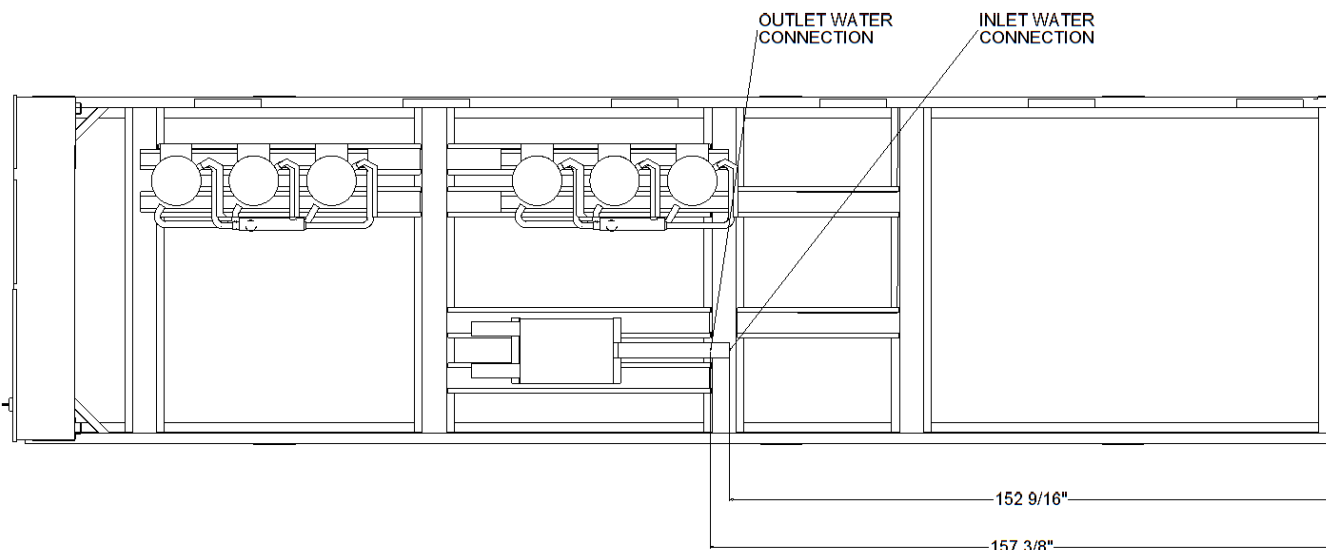
Unit Overview

Chiller Model	Ascend (TM) Air-Cooled Chiller Model ACS
Unit Nominal Tonnage	230 Nominal Tons
IPLV.IP	16.463 EER (Btu/W-h)
NPLV.IP	17.060 EER (Btu/W-h)
Voltage	460V/60Hz/3 phase
Refrigerant	Refrigerant Charge R-410A
Elevation	0.00 ft
Agency Listing	UL listed to US & Canadian safety std
Model Number	ACSA2302EUA*LUXAXNB2XLNL SMEX1HBBBXXAA1XXXXONX



Configuration

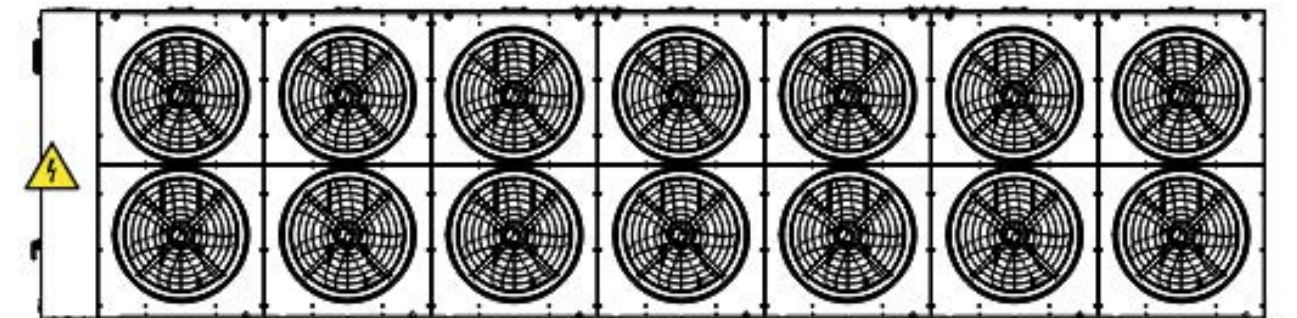
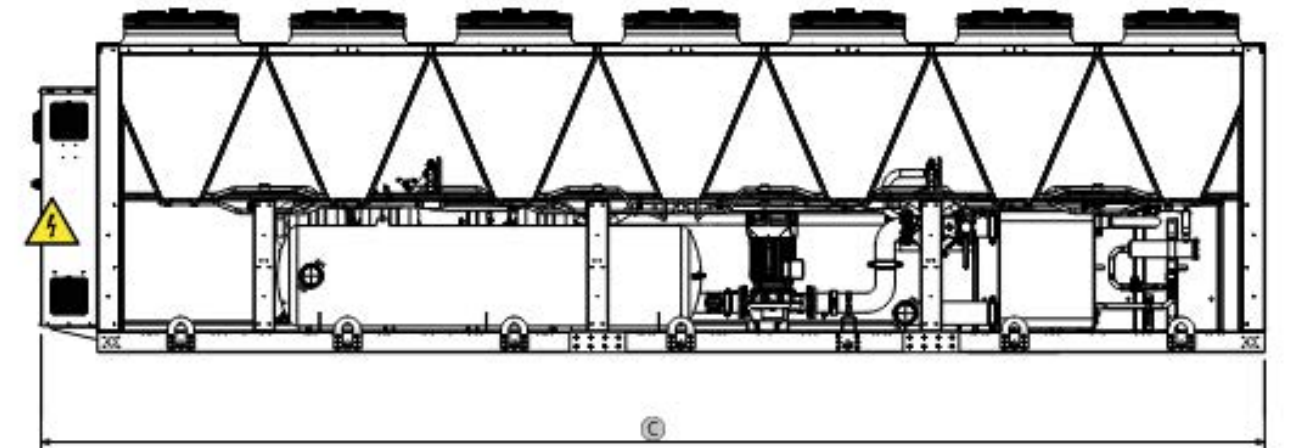
Model: NRB3000XH<sup>®</sup>A<sup>®</sup>J700



NRB3000 Dimensions and Weight

Dimensions and weights

A [in]	B [in]	C [in]	Empty weight [lb]	Working weight [lb]	Shipping weight [lb]
96.46	86.61	468.5	18,739.29	19,047.93	18,739.29



Enclosures



Image shown may not reflect actual configuration

**DG350-DG500  
SOUND ATTENUATED ENCLOSURES**

US Sourced  
Gas Generator Set  
350 - 500 ekW 60 Hz

**Level 2 Sound Attenuated Enclosure (Steel) Sound Level**

Model	Standby eKW	Cooling Air Flow Rate		Ambient Capability*		Sound Pressure Levels (dBA) at 7m (23 ft) 100% Load
		m <sup>3</sup> /s	cfm	°C	°F	
DG350-DG500	350 - 500	TBD	TBD	40*	104	75*

**Sound Attenuated Enclosure (Aluminum) Sound Level**

Model	Standby eKW	Cooling Air Flow Rate		Ambient Capability*		Sound Pressure Levels (dBA) at 7m (23 ft) 100% Load
		m <sup>3</sup> /s	cfm	°C	°F	
DG350-DG500	350 - 500	TBD	TBD	40*	104	75*

**Level 3 Sound Attenuated Enclosure (Steel) Sound Level**

Model	Standby eKW	Cooling Air Flow Rate		Ambient Capability*		Sound Pressure Levels (dBA) at 7m (23 ft) 100% Load
		m <sup>3</sup> /s	cfm	°C	°F	
DG350-DG500	350 - 500	TBD	TBD	40*	104	70*

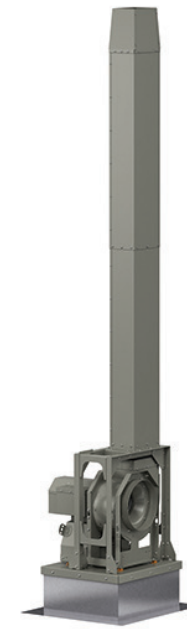
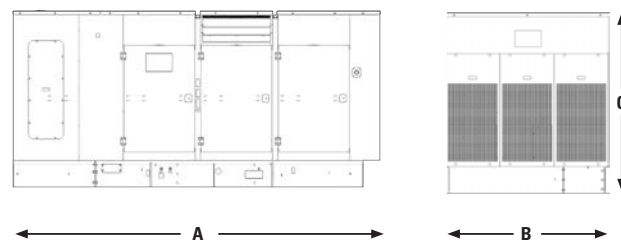
\* Targeted value only

**Component Weights to Calculate Package Weight**

Model	Standby eKW	Narrow Skid Base		Wide Skid Base		Sound Attenuated Enclosure (Steel)		Sound Attenuated Enclosure (Aluminum)	
		kg	lb	kg	lb	kg	lb	kg	lb
DG350-DG500	350 - 500	286	630	665	1466	1393	3071	887	1955

**Sound Attenuated Enclosure on Skid Base**

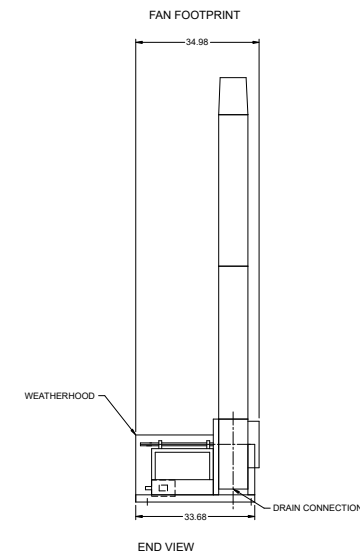
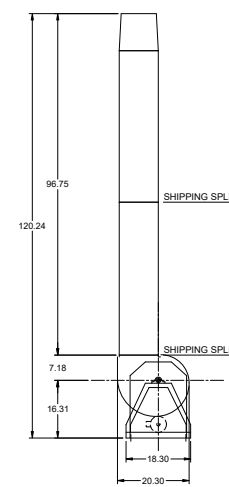
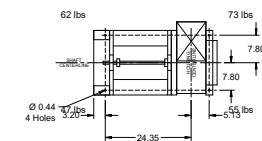
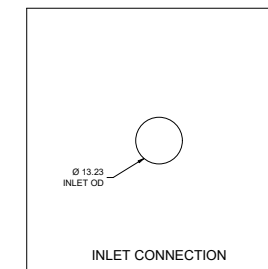
Model	Standby eKW	Length "A"		Width "B"		Height "C"	
		mm	in	mm	in	mm	in
DG350-DG500	350 - 500	5230	205.9	2315	91.1	2253	88.7



Printed Date: 08/10/2022  
Job: BALA - 51 Melcher St - Small EFs  
Mark: FJI  
Model: FJI-10-BI-X

Model: FJI-10-BI-X

Centrifugal Fume Exhaust Fan



SIDE VIEW  
\*SIDE VIEW IS VIEWED FROM DRIVE SIDE  
\*FANS ARE SUBJECT TO ± 1/32 INCH TOLERANCE  
\*DUE TO CONTINUAL IMPROVEMENTS DIMENSIONS MAY CHANGE



# HP Series Hydraulic Dock Leveler

## Product Specifications



### DESIGN HIGHLIGHTS

- Patented SafeTFrame™ design
- Lug style lip hinge & Lambda™ beam structure
- GRAVITY LIP™ mechanical lip extension
- T.E.N.V. Pump/motor assembly & regenerative hydraulics
- Nema 4X push-button control panel (non-interlock capable)
- Single phase or three phase power
- Hydraulic velocity fuse safety stop
- Open subframe design
- Automatic retracting 60,000 lbs. (27,215 Kg) structural dock level support legs
- Full operating range toe guards
- Below-dock endloading capability
- 16" Lip standard (406 mm)
- Fixed rear hinge - no pinch points
- Integral maintenance strut & lip support latch
- Heavy-duty B410-14F dock bumpers
- Reduce lip crown/extended lip chamfer

### AVAILABLE OPTIONS

- Non-metallic control panel (interlock capable)
- HP Option 1 package:
  - Automatic return-to-dock
  - Non-Metallic control panel (interlock capable)
- Brush weatherseal
- ENERGY GUARD® perimeter weatherseal system
- 18" Lip (457 mm)     20" Lip (508 mm)
- 24" Pit conversion (607 mm)
- Spray foam insulated deck
- Abrasive surface
- Spray metalize (deck, lip & subframe)
- Special paint color
- Lip taper \_\_\_\_\_ (specify)
- High lip crown
- Pan option:
 

For installation without preformed concrete pits, dock leveler supplied with integral pre-formed steel pan for pour-in-place construction. Dock leveler shall be in an enclosed steel pan structure complete with its own six-piece welded structural curb angles and concrete anchors. The dock leveler is to be concreted in place as the floor is poured.
- Other \_\_\_\_\_

### ACCESSORIES

- STAR® vehicle restraint \_\_\_\_\_
- HIDDEN HOOK™ recessed restraint
- MANUAL SURFACE CHOCK™ wheel restraint
- SURFACE CHOCK™ wheel restraint
- AUTO CHOCK® wheel restraint
- Master or combination control panel \_\_\_\_\_

### BUMPER OPTIONS

- B410-14     B610-14     B610-14F     VB420-11F
- VB420-11 Steel Faced     Other \_\_\_\_\_

### CAPACITY

- 30K lb (13.6K kg)     35K lb (15.8K kg)     40K lb (18K kg)
- 45K lb (20.4K kg)     50K lb (22.7K kg)

### PROJECT INFORMATION

JOB NAME \_\_\_\_\_

ADDRESS \_\_\_\_\_

GENERAL CONTRACTOR \_\_\_\_\_

DISTRIBUTOR \_\_\_\_\_

MODEL \_\_\_\_\_ QUANTITY \_\_\_\_\_

VOLTAGE/PHASE \_\_\_\_\_

### CERTIFIED FOR CONSTRUCTION

BY \_\_\_\_\_

COMPANY \_\_\_\_\_

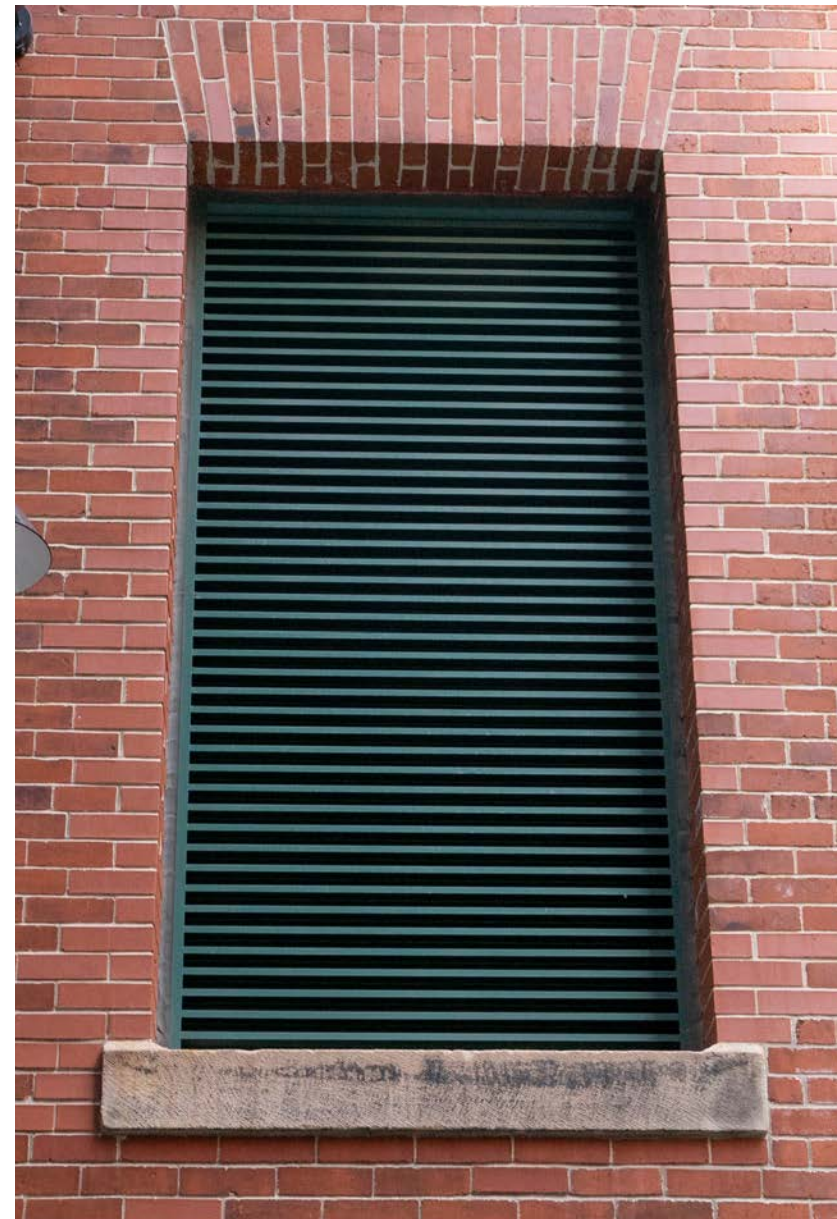
ADDRESS \_\_\_\_\_

DATE \_\_\_\_\_

800.558.6960



EXISTING WINDOW TO BE INFILLED



EXAMPLE OF PROPOSED LOUVER INFILL FROM ADJACENT PROPERTY



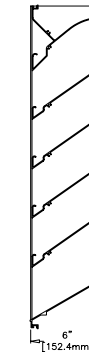
EXISTING WINDOW TO BE INFILLED




**ESD-635**  
Stationary Louver, Drainable Blade  
Extruded Aluminum

**Standard Construction**

<b>Fame</b>	Heavy gauge extruded 6063-T5 aluminum, 6 in. (152 mm) x 0.081 in. (2 mm) nominal wall thickness
<b>Blades</b>	Drainable design, heavy gauge extruded 6063-T5 aluminum, 0.081 in. (2 mm) nominal wall thickness, positioned 37° on approximately 4 in. (102 mm) centers
<b>Louver Depth</b>	6 in. (152 mm)
<b>Construction</b>	Mechanically fastened
<b>Finish</b>	Mill
<b>Minimum Size</b>	12 in. W x 12 in. H (305 mm W x 305 mm H)
<b>Maximum Single Section Size</b>	120 in. W or 120 in. H (limited to 70 ft. sq.) (3048 mm W or 3048 mm H) (limited to 6.5 sq. m)
<b>Wind Load</b>	25 PSF (1.2 kPa)



**Performance Ratings**

 Greenheck Fan Corporation certifies that the ESD-635 louvers shown herein are licensed to bear the AMCA Seal. The ratings shown are based on tests and procedures performed in accordance with AMCA Publication 511 and comply with the requirements of the AMCA Certified Ratings Program. The AMCA Certified Ratings Seal applies to air performance and water penetration ratings.

**Performance of 48 in. x 48 in. (1219 mm x 1219 mm) Louver**

<b>Free Area</b>	Area 9.41 sq. ft. (0.874 sq. m)
	Percent 58.8%
<b>Performance at Beginning Point of Water Penetration</b>	
Free Area Velocity	Above 1250 fpm (6.350 m/s)
Max Intake Volume	11,763 cfm (5.551 m³/s)
<b>Performance at 6,000 CFM (2.832 m³/s) Intake</b>	
Pressure Drop	0.061 in. wg (0.015 kPa)

**Document Links**

- [Louver Finishes & Colors](#)
- [Louver Product Selection Guide](#)
- [Louver Products Catalog](#)
- [Louver Warranty Statement](#)

**Options and Accessories**

- [Bird Screen](#)
- [Blank Off Panels](#)
- [Extended Sill](#)
- [Flange Frame](#)
- [Filter Rack/Filter](#)
- [Glazing Frame](#)
- [Hinged Frame](#)
- [Insect Screen](#)
- [Mounting Angles](#)
- [Security Bars](#)
- [Welded Construction](#)
- 0.125 in. (3 mm) Nominal Frame and/or Blade Thickness
- [Variety of Architectural Finishes](#)

**Standard Details**

[ESD-635 Standard Details](#)  
Structural reinforcing members may be required to adequately support and install multiple louver sections within a large opening. Structural reinforcing members along with any associated installation hardware is not provided by Greenheck unless indicated otherwise by Greenheck. Options and accessories including, but not limited to, screens, filter racks, louver doors, and blank off panels are not subject to structural analysis unless indicated otherwise by Greenheck.

CUT SHEET- PROPOSED LOUVER



Hartford Green AL208



Patina Green GF114

STANDARD OR CUSTOM FINISH TO MATCH