

COSENTINO

EXTERIOR SIGNAGE SUBMISSION



COSENTINO

36 THOMSON PLACE

marguliesperruzzi

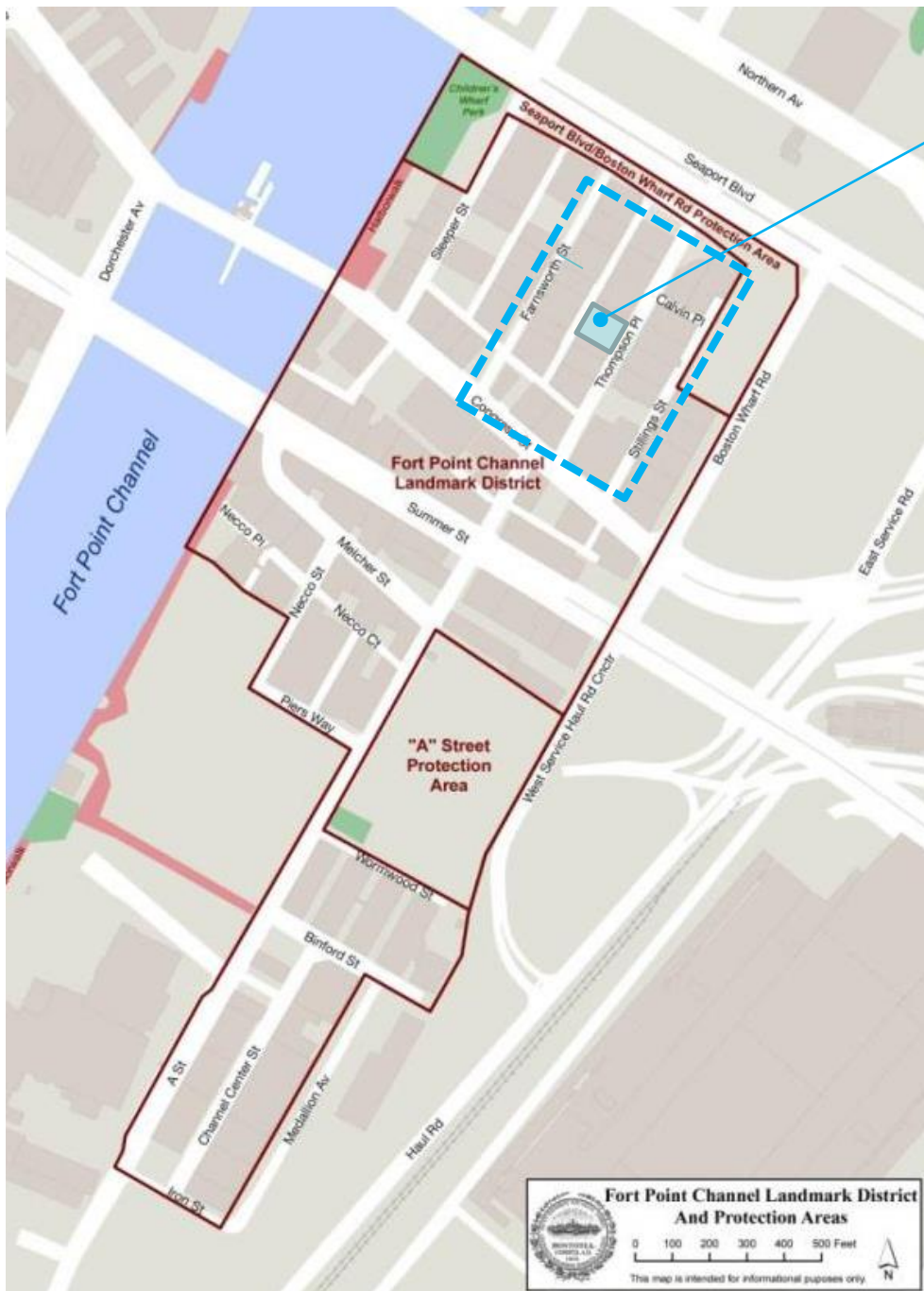
DESIGN REVIEW AGENDA

LOCATION OF BUILDING WITHIN DISTRICT

EXISTING PHOTOS

SIGNAGE ELEMENTS

- PROPOSED DESIGN LAYOUT
- ALTERNATE CONFIGURATION / STUDY #1
- ALTERNATE CONFIGURATION / STUDY #2
- SIGNAGE DETAILS
- HISTORIC REFERENCE IMAGES



36 THOMSON PLACE



FORT POINT CHANNEL LANDMARK DISTRICT

PROJECT LOCATION MAPS



EXISTING CONDITION PHOTO

FRONT OF 36 THOMSON PLACE – VIEW FROM ACROSS STREET



EXISTING CONDITION PHOTO

FRONT OF 36 THOMSON PLACE – ENLARGED VIEW

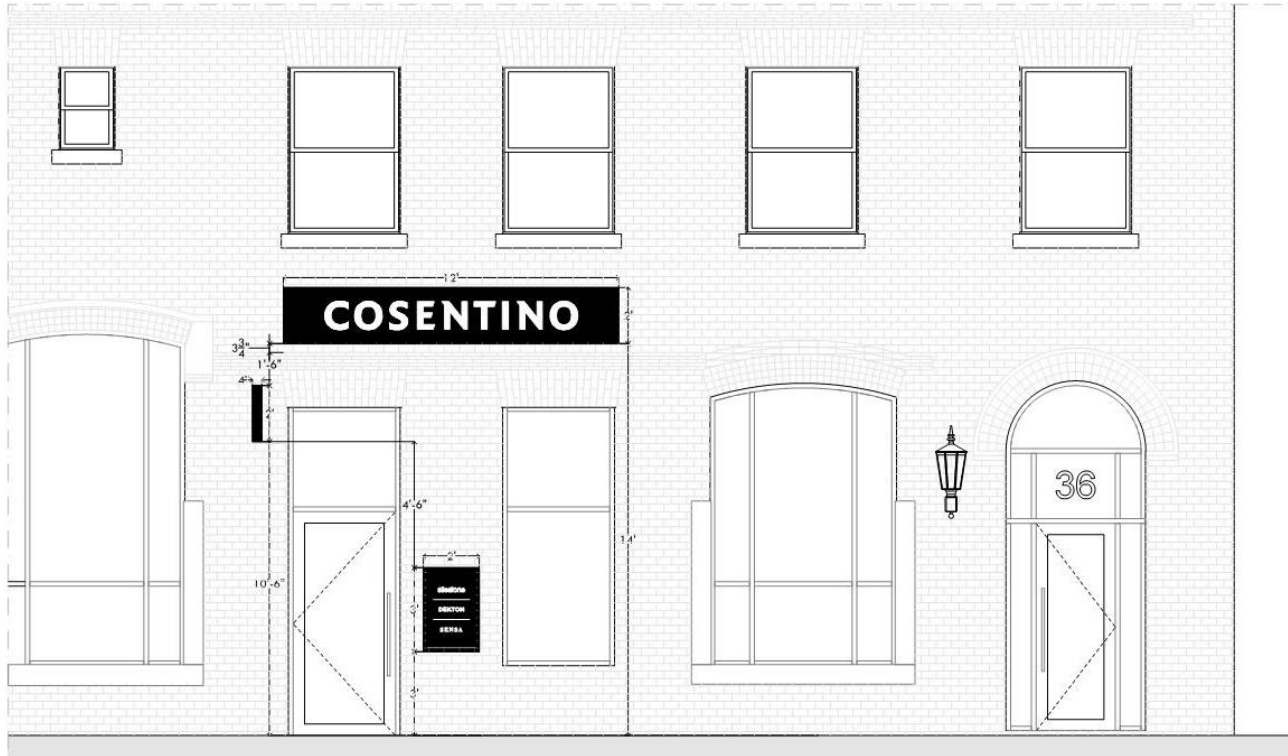


CONCEPTUAL RENDERING

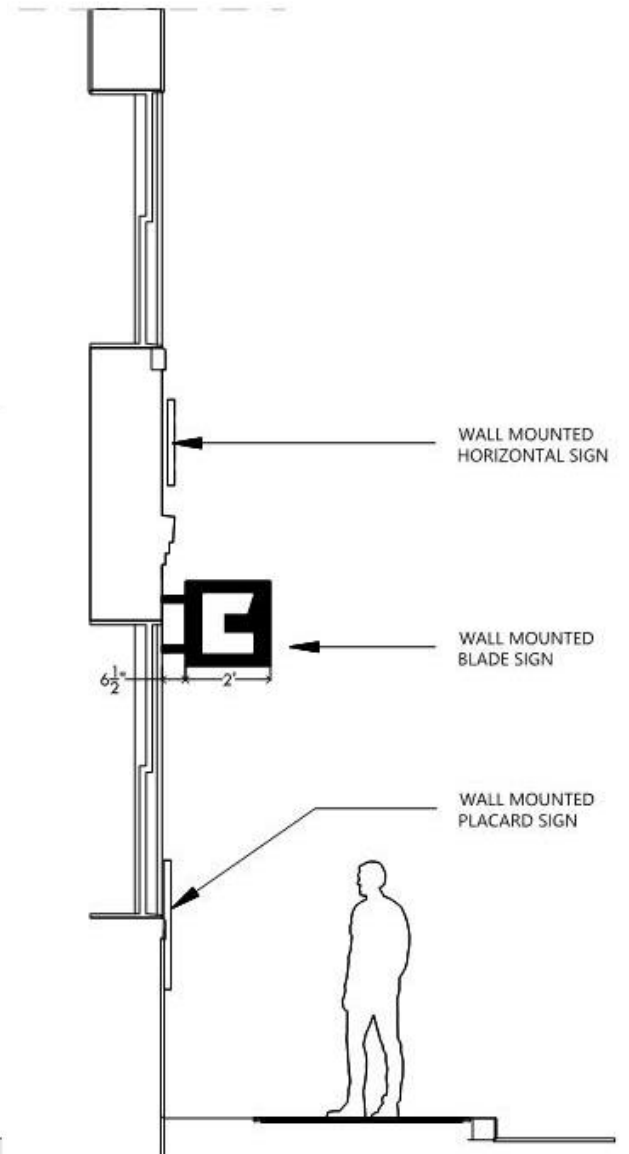
PROPOSED SIGNAGE - THOMSON PLACE VIEW

COSENTINO

marguliesperruzzi



PROPOSED DESIGN LAYOUT

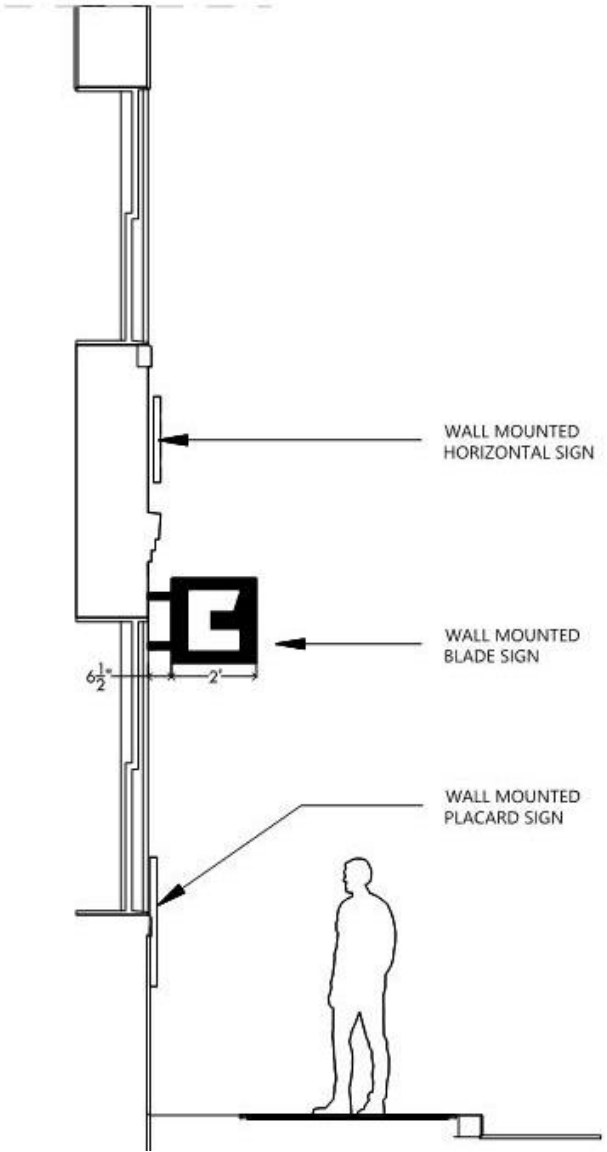
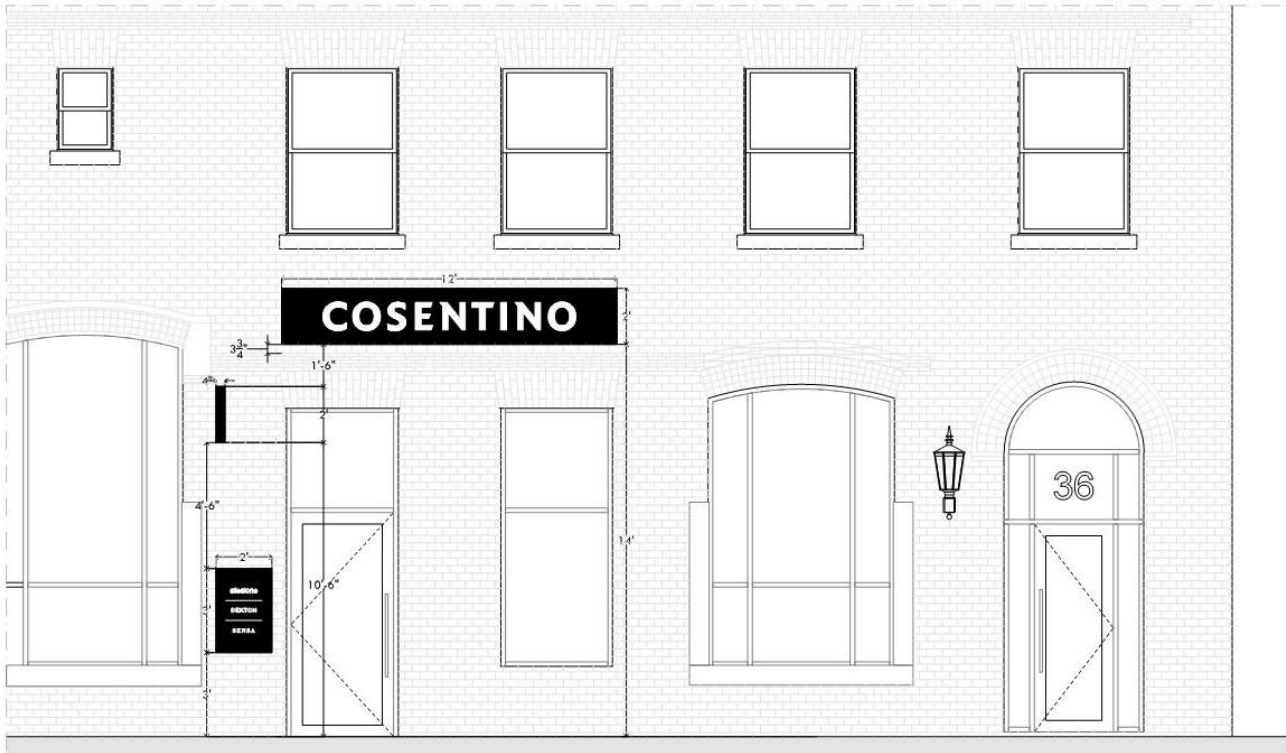


PROPOSED SIGNAGE CONFIGURATION

COSENTINO

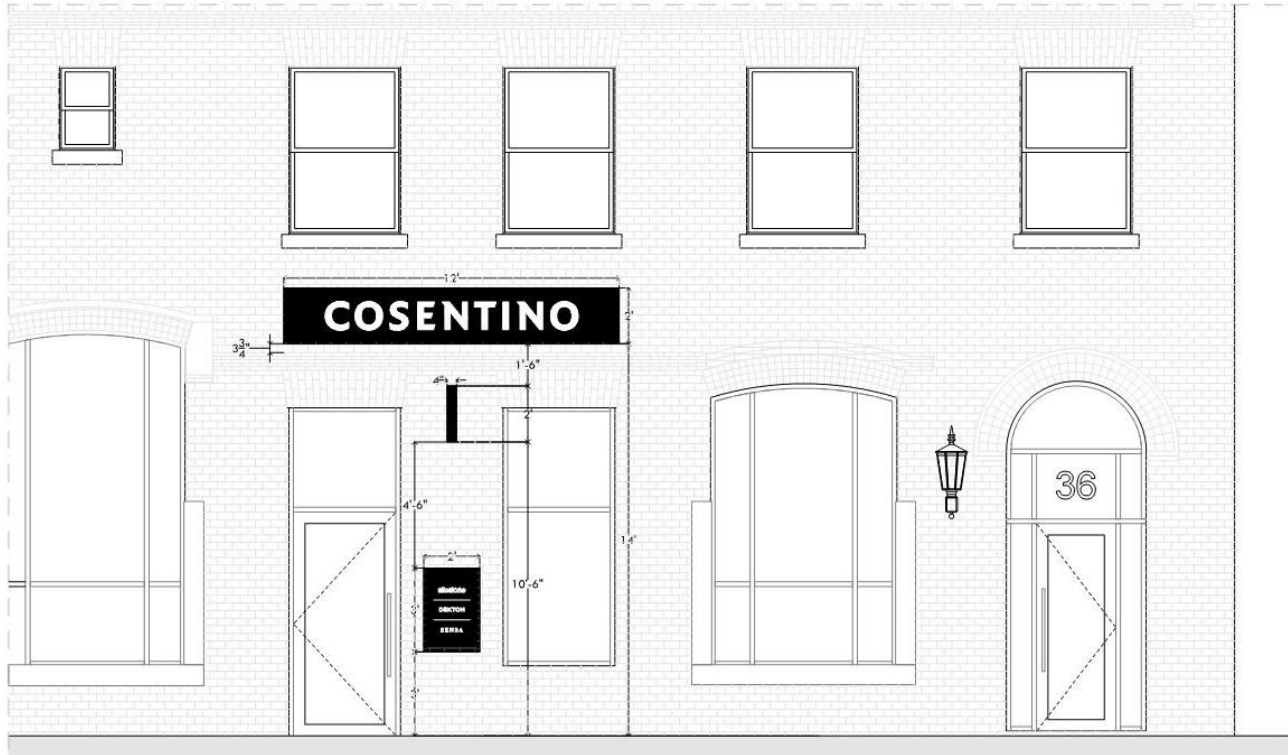
marguliesperruzzi

10.13.2022

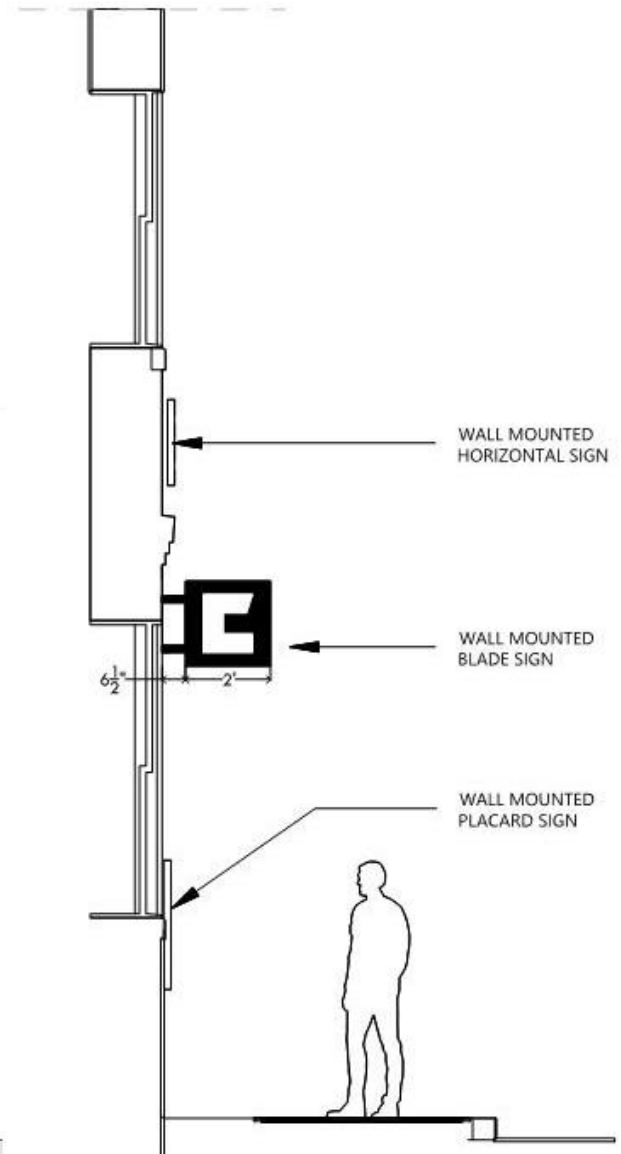


DESIGN LAYOUT (ALTERNATE STUDY)

ALTERNATE SIGNAGE CONFIGURATION #1

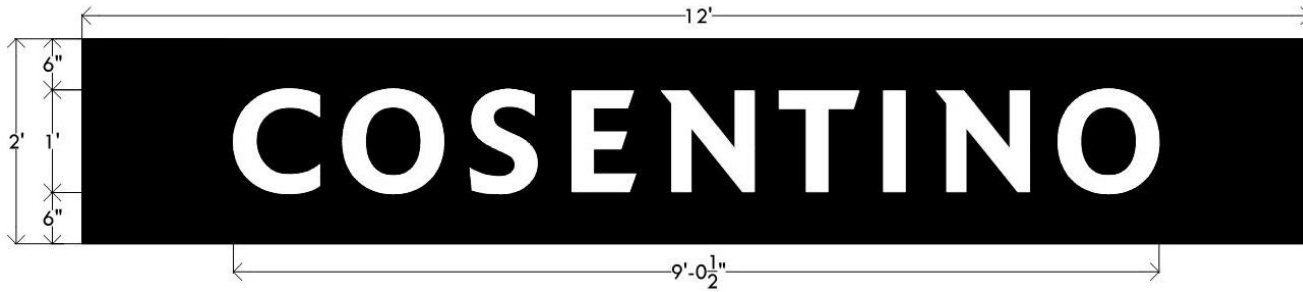


DESIGN LAYOUT (ALTERNATE STUDY)

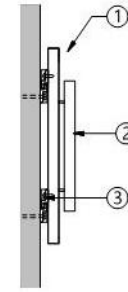


ALTERNATE SIGNAGE CONFIGURATION #2

WALL MOUNTED HORIZONTAL SIGN



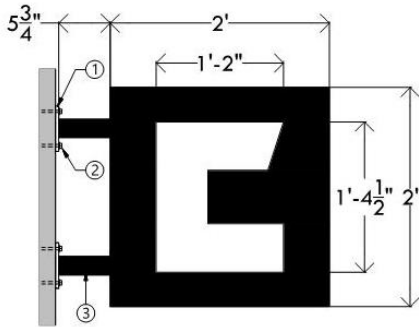
ELEVATION VIEW



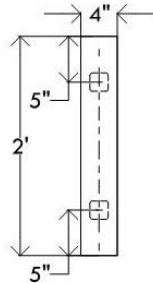
SECTION VIEW

- ① 1" Painted Wood Panel.
- ② 6" Border to edge around text, TYP for all sides.
- ③ Z-clip wall attachment. Non-corrosive 1/4"- 20 thru-bolts with fender washers & nuts. Mount into existing mortar joints. Mounting hardware may vary to suit wall conditions.

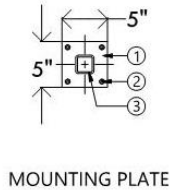
WALL MOUNTED BLADE SIGN



ELEVATION VIEW



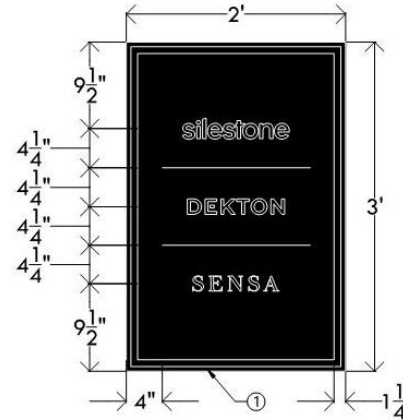
SECTION VIEW



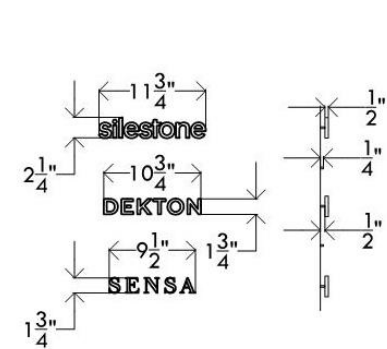
MOUNTING PLATE

- ① 3/8"x 5"x 5" aluminum mounting plate. PTM Matthews brushed aluminum.
- ② Non-corrosive 1/4"- 20 thru-bolts with fender washers & nuts. Mount into existing mortar joints. Mounting hardware may vary to suit wall conditions.
- ③ 2" radius corner square aluminum PTM Matthews brushed aluminum.

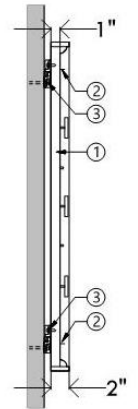
WALL MOUNTED PLACARD SIGN



ELEVATION VIEW



LETTER DIMENSIONS



SECTION VIEW

- ① 2" Painted Wood Panel.
- ② 4" Border to edge around text, TYP for all sides.
- ③ Z-clip wall attachment. Non-corrosive 1/4"- 20 thru-bolts with fender washers & nuts. Mount into existing mortar joints. Mounting hardware may vary to suit wall conditions.

* ALL SIGNS TO LOCATE FASTENERS WITHIN MORTAR JOINTS

PROPOSED SIGNAGE DETAILS



c. 1898-1907



c. 1900-1907

These images are from the collection of glass-plate negatives given by the Boston Wharf Company to the Boston Public Library's Print Department in 1995. The negatives were taken circa 1898-1907 as a record of the buildings then owned and managed by the Boston Wharf Company in the Fort Point Channel Area of Boston.

HISTORIC REFERENCE IMAGES



COSENTINO

marguliesperruzzi