



CONNECT DOWNTOWN: CAMBRIDGE STREET

100% Design Proposal Overhead View
Published October 17, 2022. Replaces previous version.



PARKING & CURB REGULATIONS

This rendering includes proposed parking and curb regulations. We are talking with abutters to fine-tune this proposal.

Stopping is not allowed in any area that is not specifically called out.

No changes to curb regulations between Somerset St and Court St/Tremont St

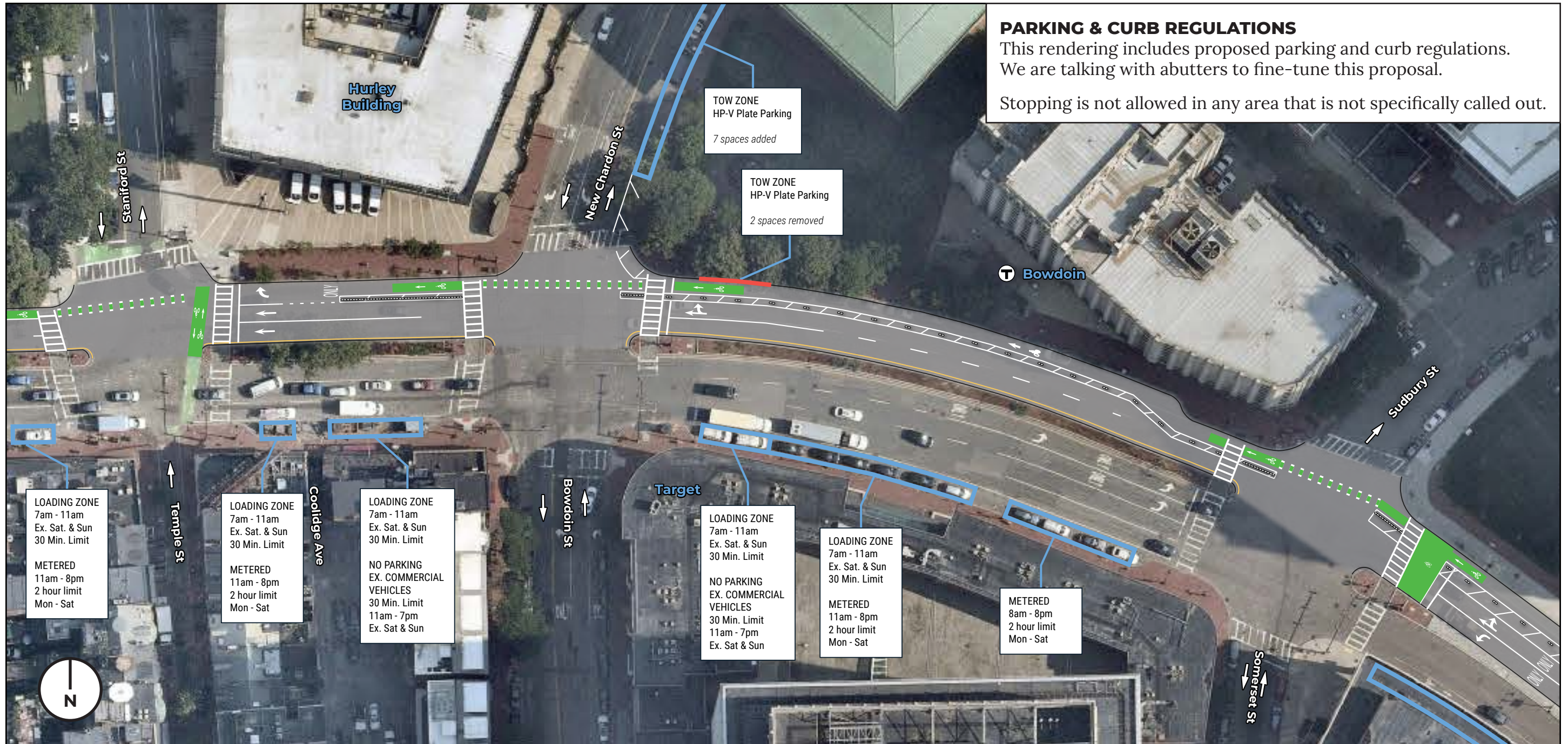
This is a representation of our 100% design plans for Cambridge Street between Court Street and Charles Circle. All information in this document is for informational purposes only. It is not drawn to scale and is not meant for construction. Find more information about Connect Downtown: Cambridge Street at: boston.gov/connect-downtown





CONNECT DOWNTOWN: CAMBRIDGE STREET

100% Design Proposal Overhead View
Published October 17, 2022. Replaces previous version.



PARKING & CURB REGULATIONS

This rendering includes proposed parking and curb regulations. We are talking with abutters to fine-tune this proposal.

Stopping is not allowed in any area that is not specifically called out.

This is a representation of our 100% design plans for Cambridge Street between Court Street and Charles Circle. All information in this document is for informational purposes only. It is not drawn to scale and is not meant for construction. Find more information about Connect Downtown: Cambridge Street at: boston.gov/connect-downtown





CONNECT DOWNTOWN: CAMBRIDGE STREET

100% Design Proposal Overhead View
Published October 17, 2022. Replaces previous version.

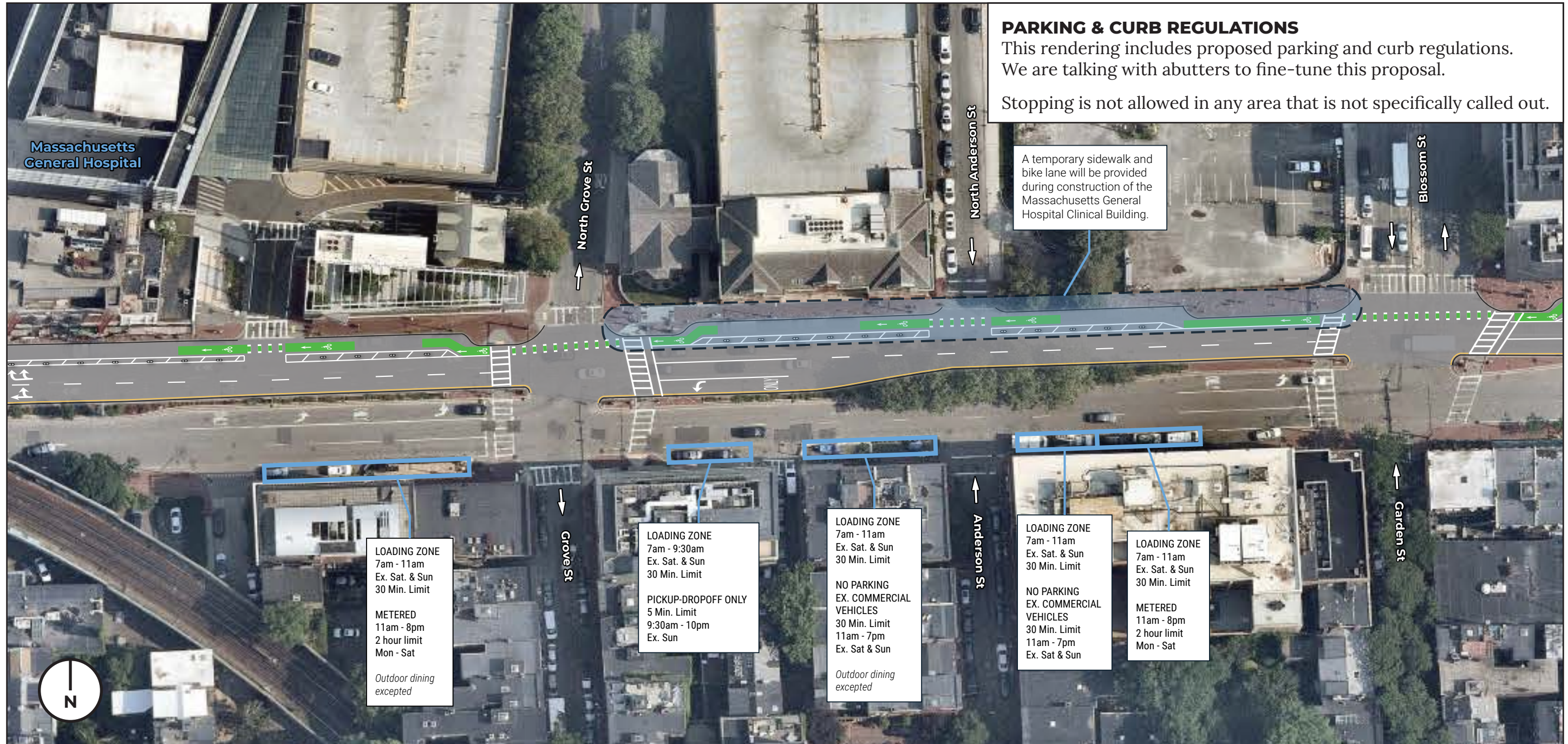


This is a representation of our 100% design plans for Cambridge Street between Court Street and Charles Circle. All information in this document is for informational purposes only. It is not drawn to scale and is not meant for construction. Find more information about Connect Downtown: Cambridge Street at: boston.gov/connect-downtown



CONNECT DOWNTOWN: CAMBRIDGE STREET

100% Design Proposal Overhead View
Published October 17, 2022. Replaces previous version.



This is a representation of our 100% design plans for Cambridge Street between Court Street and Charles Circle. All information in this document is for informational purposes only. It is not drawn to scale and is not meant for construction. Find more information about Connect Downtown: Cambridge Street at: boston.gov/connect-downtown





CONNECT DOWNTOWN: CAMBRIDGE STREET

100% Design Proposal Overhead View
Published October 17, 2022. Replaces previous version.



PARKING & CURB REGULATIONS

This rendering includes proposed parking and curb regulations. We are talking with abutters to fine-tune this proposal.

Stopping is not allowed in any area that is not specifically called out.

This is a representation of our 100% design plans for Cambridge Street between Court Street and Charles Circle. All information in this document is for informational purposes only. It is not drawn to scale and is not meant for construction. Find more information about Connect Downtown: Cambridge Street at: boston.gov/connect-downtown

