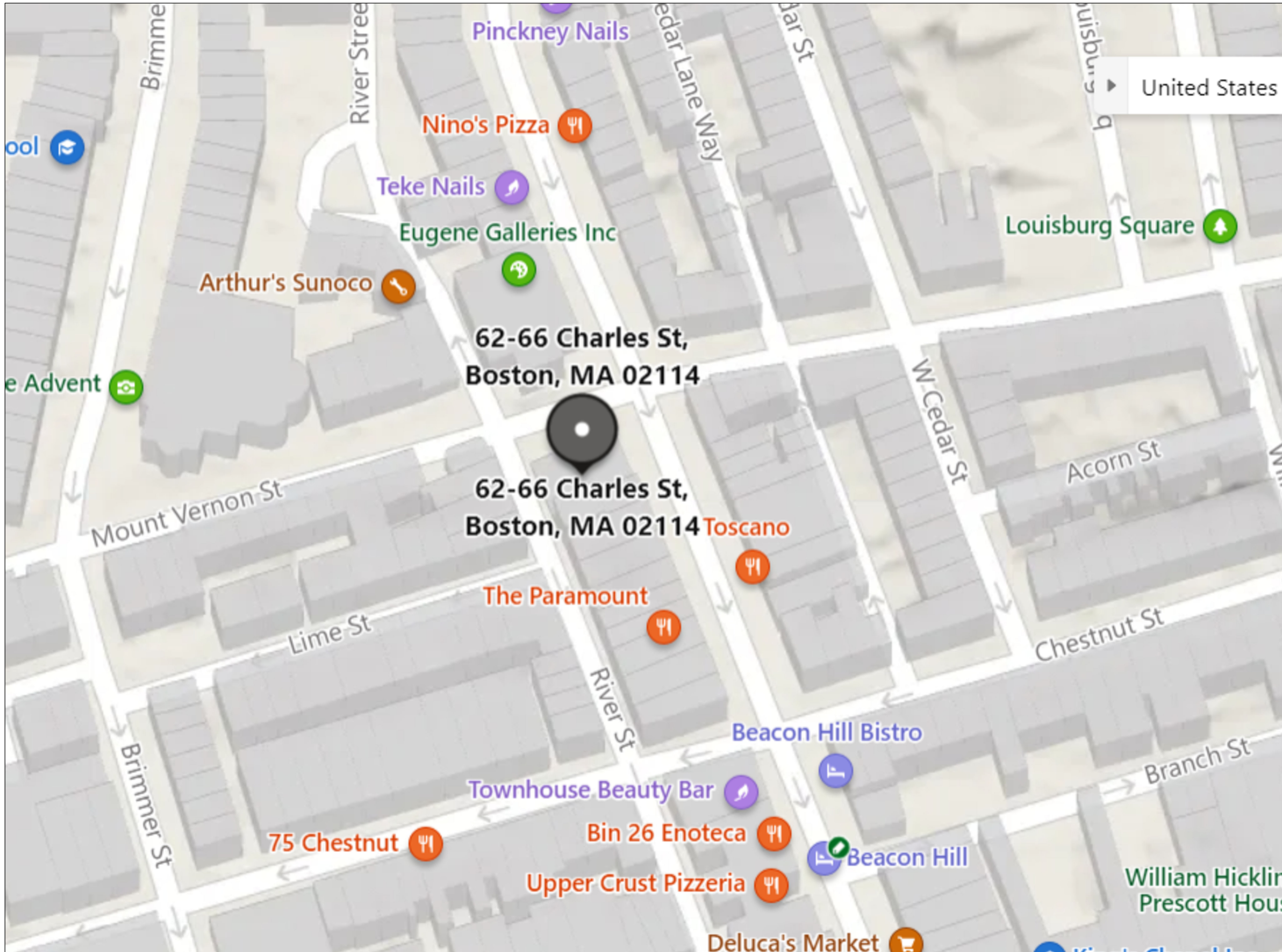


NEW SIGNAGE FOR NUTS FACTORY

62-66 CHARLES STREET BOSTON, MA 02114



1 KEY PLAN
A-1 SCALE: NTS

REVISION TABLE	
NUMBER	DATE

62-66 CHARLES STREET
BOSTON, MA 02114

NEW SIGNAGE FOR
NUTS FACTORY

DRAWINGS PROVIDED BY:
WILLIAM J COOK R.A.
62 OLD STATE ROAD
Lanesborough, MA 01224
516 820-9732

DATE:
7/23/22

SCALE:

SHEET:

A-1

NEW SIGNAGE FOR NUTS FACTORY

62-66 CHARLES STREET BOSTON, MA 02114



1
A-2

EXISTING VIEW

SCALE: NTS

NUMBER	DATE	REVISION TABLE	REVISOR	DESCRIPTION

62-66 CHARLES STREET
BOSTON, MA 02114

NEW SIGNAGE FOR
NUTS FACTORY

DRAWINGS PROVIDED BY:
WILLIAM J COOK R.A.
62 OLD STATE ROAD
Lanesborough, MA 01224
516 820-9732

DATE:

7/23/22

SCALE:

SHEET:

A-2

NEW SIGNAGE FOR NUTS FACTORY

62-66 CHARLES STREET BOSTON, MA 02114



1
A-3

EXISTING VIEW

SCALE: NTS

NUMBER	DATE	REVISION TABLE	REVISOR	DESCRIPTION

62-66 CHARLES STREET
BOSTON, MA 02114

NEW SIGNAGE FOR
NUTS FACTORY

DRAWINGS PROVIDED BY:
WILLIAM J COOK R.A.
62 OLD STATE ROAD
Lanesborough, MA 01224
516 820-9732

DATE:
7/23/22

SCALE:

SHEET:

A-3

NEW SIGNAGE FOR NUTS FACTORY

62-66 CHARLES STREET BOSTON, MA 02114



1 PROPOSED VIEW FROM CHARLES STREET CORNER
A-4 SCALE: NTS

NUMBER	DATE	REVISION TABLE	REVISOR	DESCRIPTION

62-66 CHARLES STREET
BOSTON, MA 02114

NEW SIGNAGE FOR
NUTS FACTORY

DRAWINGS PROVIDED BY:
WILLIAM J COOK R.A.
62 OLD STATE ROAD
Lanesborough, MA 01224
516 820-9732

DATE:
7/23/22

SCALE:

SHEET:

A-4

NEW SIGNAGE FOR NUTS FACTORY

62-66 CHARLES STREET BOSTON, MA 02114



1 PROPOSED VIEW FROM CHARLES STREET
A-5 SCALE: NTS

REVISION TABLE	
NUMBER	DATE

62-66 CHARLES STREET
BOSTON, MA 02114

NEW SIGNAGE FOR
NUTS FACTORY

DRAWINGS PROVIDED BY:
WILLIAM J COOK R.A.
62 OLD STATE ROAD
Lanesborough, MA 01224
516 820-9732

DATE:
7/23/22

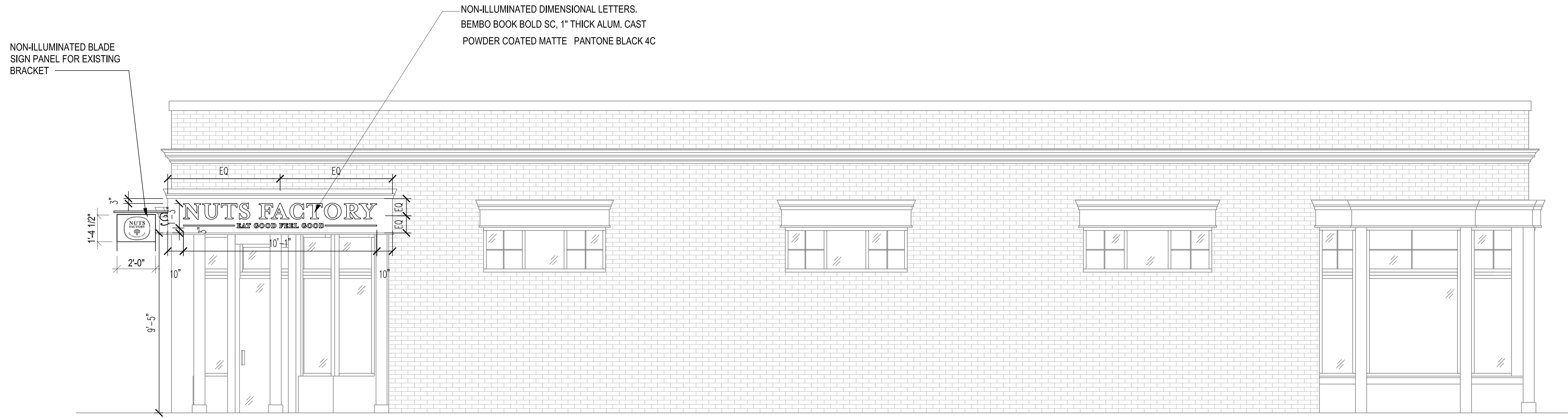
SCALE:

SHEET:

A-5

NEW SIGNAGE FOR NUTS FACTORY

62-66 CHARLES STREET BOSTON, MA 02114



1 NORTH ELEVATION
A-6 SCALE: 3/8"=1'

REVISION TABLE	
NUMBER	DATE

62-66 CHARLES STREET
BOSTON, MA 02114

NEW SIGNAGE FOR
NUTS FACTORY

DRAWINGS PROVIDED BY:
WILLIAM J COOK R.A.
62 OLD STATE ROAD
Lanesborough, MA 01224
516 820-9732

DATE:
7/23/22

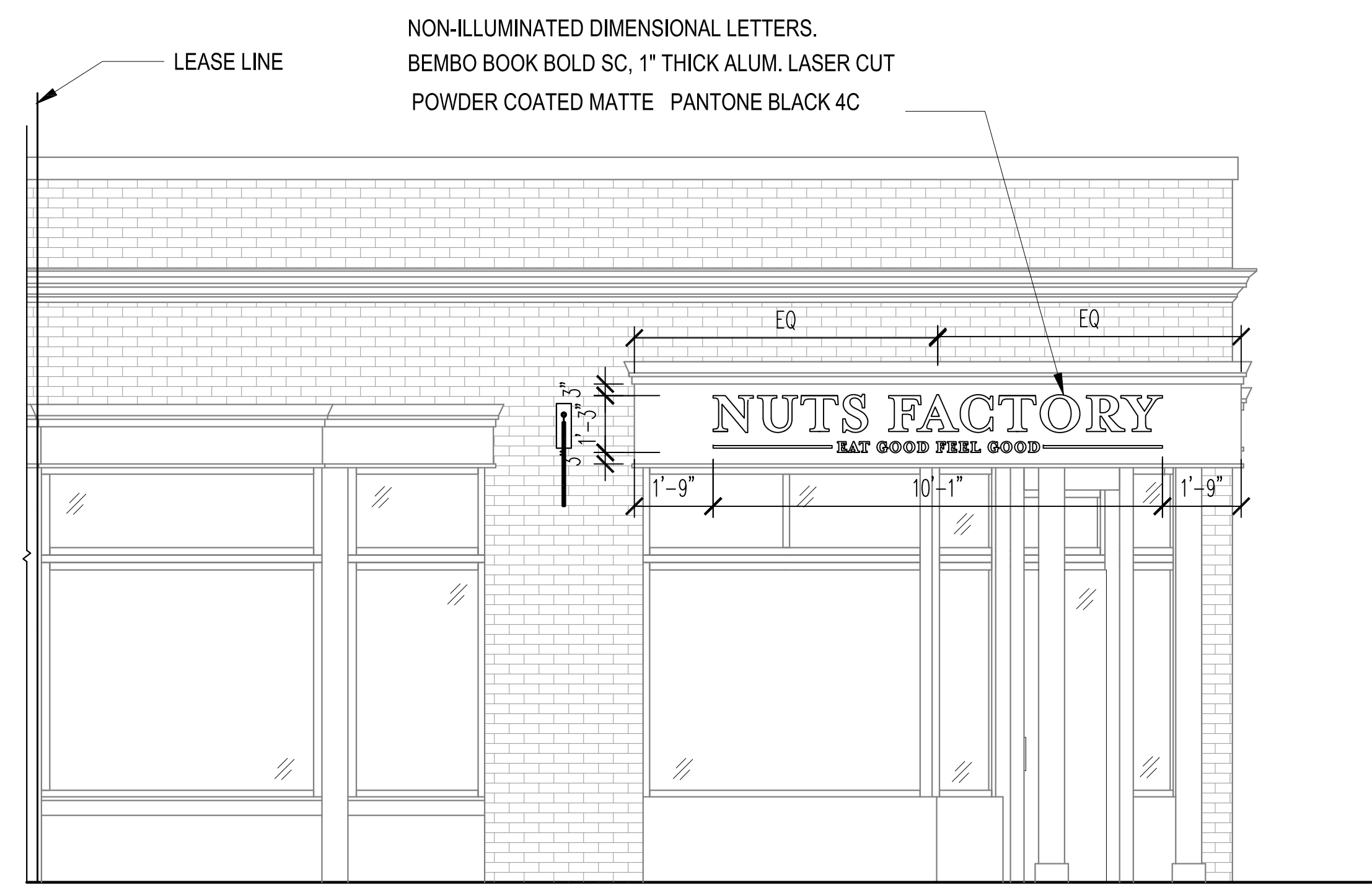
SCALE:

SHEET:

A-6

NEW SIGNAGE FOR NUTS FACTORY

62-66 CHARLES STREET BOSTON, MA 02114



1 EAST ELEVATION
A-7 SCALE: 3/8"=1'

REVISION TABLE	
NUMBER	DATE

62-66 CHARLES STREET
BOSTON, MA 02114

NEW SIGNAGE FOR
NUTS FACTORY

DRAWINGS PROVIDED BY:
WILLIAM J COOK R.A.
62 OLD STATE ROAD
Lanesborough, MA 01224
516 820-9732

DATE:
7/23/22

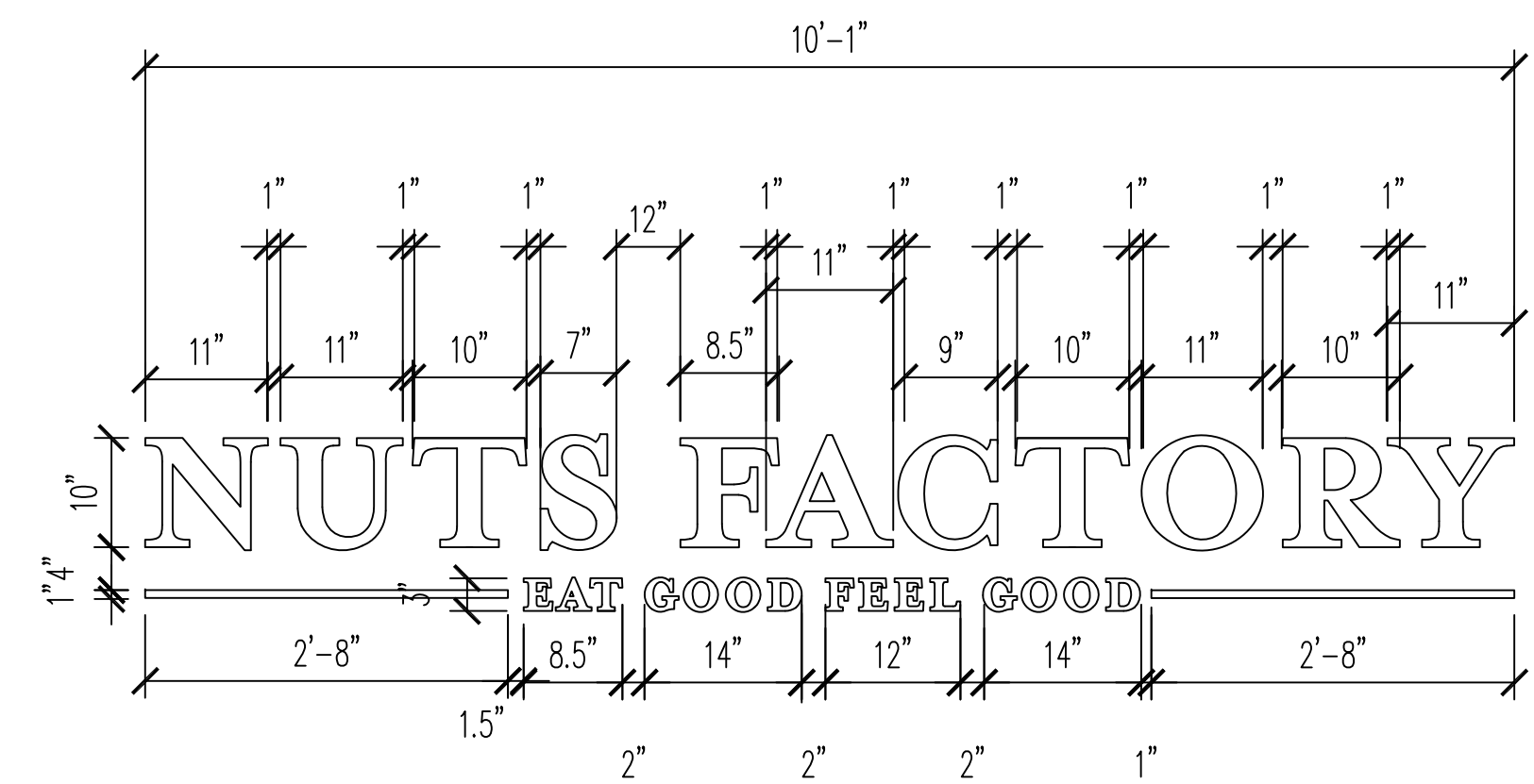
SCALE:

SHEET:

A-7

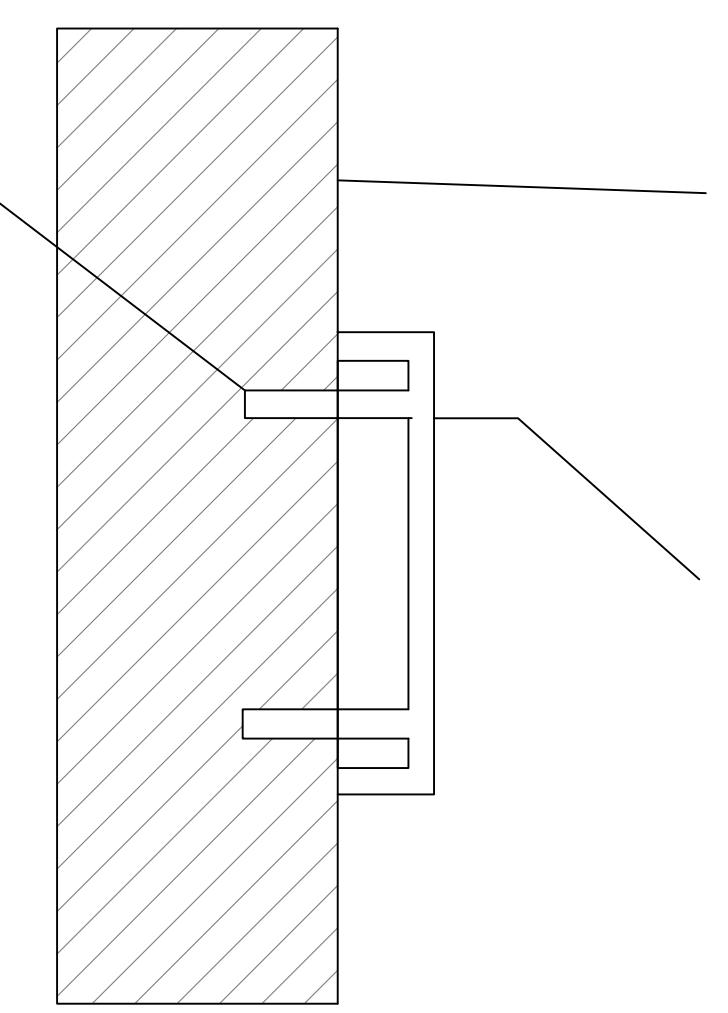
NEW SIGNAGE FOR NUTS FACTORY

62-66 CHARLES STREET BOSTON, MA 02114



1 LETTER DETAILS
SCALE: 3/4"=1'

BUILT IN 1/4"-20 X 3" STUDS @ 2.5" O.C. BOTH WAYS 4 MIN PER LETTER. EPOXIES MORTARED IN FRIEZE FLUSH



2 INSTALLATION DETAILS
SCALE: 3/4"=1'

REVISION TABLE	
NUMBER	DATE

62-66 CHARLES STREET
BOSTON, MA 02114

NEW SIGNAGE FOR
NUTS FACTORY

DRAWINGS PROVIDED BY:
WILLIAM J COOK R.A.
62 OLD STATE ROAD
Lanesborough, MA 01224
516 820-9732

DATE:
7/23/22

SCALE:

SHEET:

A-8