

Improvements to
MOTHER'S REST
Final Meeting

MOTHER'S REST



Date April 7, 2022
Boston Parks and Recreation



MEETING RECORDING



The Boston Parks and Recreation Department will be recording the meeting and posting to our project webpage for those who are unable to attend the Zoom meeting live.

It is possible that participants may also be recording the meeting with their phones cameras or other devices. If you do not wish to be recorded during this meeting, please keep your microphone and camera off.

VIRTUAL MEETING ETIQUETTE

We want to ensure this conversation is a pleasant experience for all and that all community members/ stakeholders are comfortable sharing their comments, questions and feedback.

Please be respectful and mindful of each other's time when asking questions/ providing comments, so that all attendees are able to participate in the meeting.

Keep questions/ comments project-specific and not personal to yield solution-driven discussion.

Please wait until all attendees have had the opportunity to ask a question/ provide a comment before providing additional questions/ comments.

You can always set up a conversation with lauren.bryant@boston.gov or [617-961-3019](tel:617-961-3019) to further discuss the project or process.

ZOOM TIPS

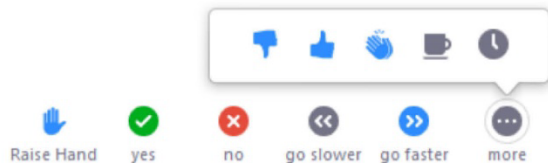
Here is how you can participate during the question and answer part of the presentation.

DURING THE PRESENTATION:



VIA WEB:

Turn video on / off.



To use these non-verbal options click on participants (bottom of screen); these options will pop up in side bar.

DURING THE Q&A:



JOINING VIA PHONE?

Use *9 to raise hand to ask for audio / video permission to ask questions or provide comments.



VIA WEB:

Chat to ask questions / comments or provide responses to poll questions



Raise hand to ask for audio / video permission to ask questions or provide comments.

AGENDA

1

PROJECT TEAM INTRODUCTION

2

PROJECT OVERVIEW

3

MEETING 4 OVERVIEW

4

FINAL PRESENTATION

5

LISTENING & DISCUSSION

6

CLOSING REMARKS & NEXT STEPS

PROJECT TEAM

LAUREN BRYANT

PROJECT MANAGER

lauren.bryant@boston.gov or 617-961-3019

CHRISTINE BRANDAO

OUTREACH COORDINATOR, EXTERNAL AFFAIRS

christine.brandao@boston.gov or 617-961-3006

DEBORAH MYERS LANDSCAPE ARCHITECTURE

Principal, Deb Myers

Principal, Jeff Thoma

Landscape Architect, Chris McCormick

Landscape Architect, Yuhan Ji

DENISE DOS SANTOS

OFFICE OF NEIGHBORHOOD SERVICES

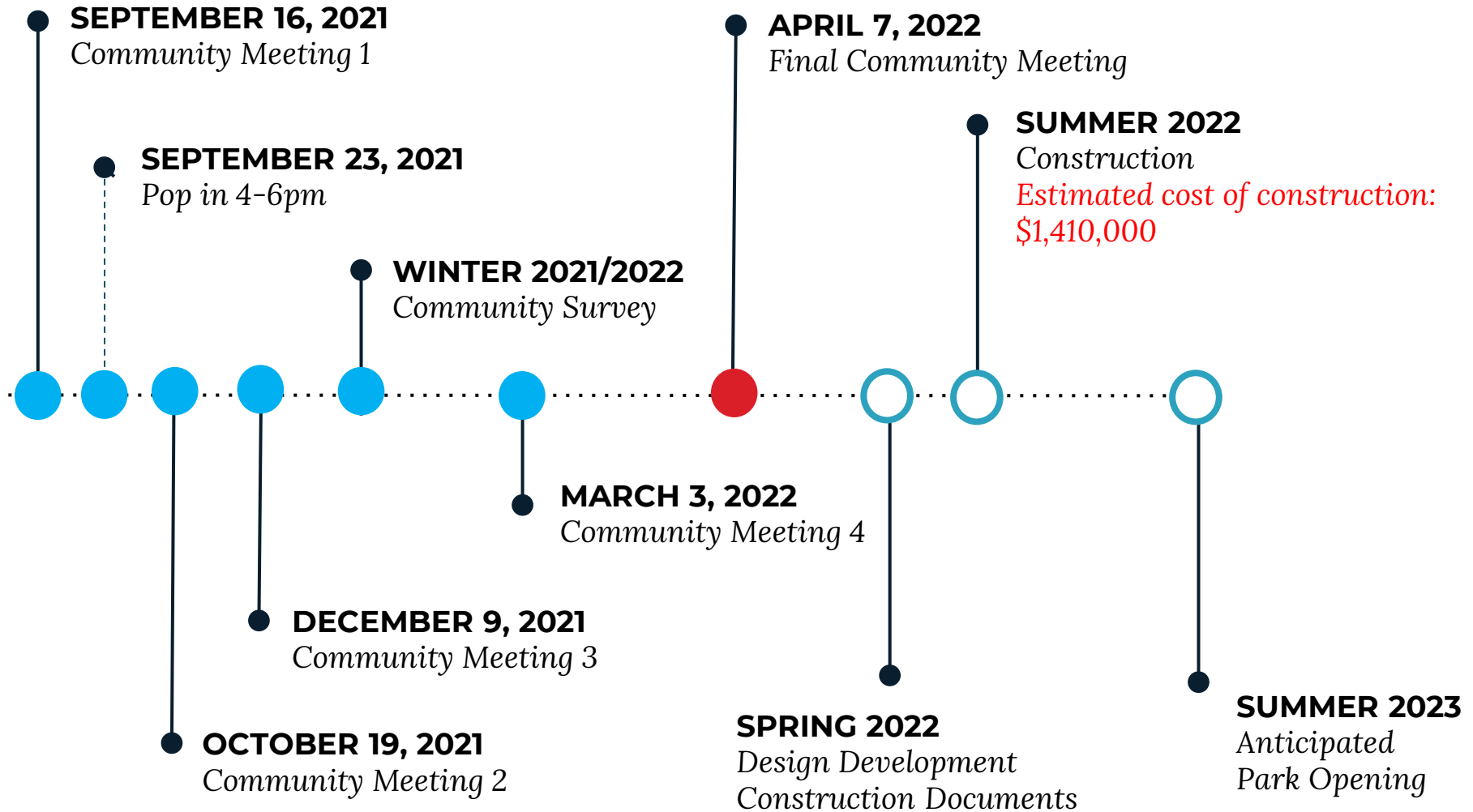
Denise.dossantos@boston.gov



PROJECT OVERVIEW



PROJECT SCHEDULE & FUNDING



A blue-tinted photograph of a park. In the foreground, there is a field of tall, dry grass. The middle ground features a paved playground area with several green benches. A person is sitting on one of the benches. In the background, there are several trees and a white house with a balcony. The text "WHAT WE HEARD at Meeting 4" is overlaid in white on the image.

WHAT WE HEARD at Meeting 4

Meeting 4 Design Plan



Meeting 4 Design Feedback

- Love the colorful stairs. It has come a long way.
- Could we install place for Piñata use for the community?
- Could we install game tables?
- USB Charging stations at teen tables
- a platform to do spoken word/speeches
- We like the tic tac toe idea. Can we add 4 square/hopscotch?
- Four corners day/weekend celebration
- Can we include flowering or fruit trees
- Would love to add educational components
- Love the slope and water play
- We would love swings / bucket swings
- like all of the exercise equipment; definitely a space for yoga
- I would opt for equipment that supports stretching and toning
- Work out upper terrace- view of ocean
- Workout...create a circuit?
- perhaps we could have exercise equipment on both levels?

DESIGN PROGRESSION

Help us build great parks.
Let us know what matters to you.





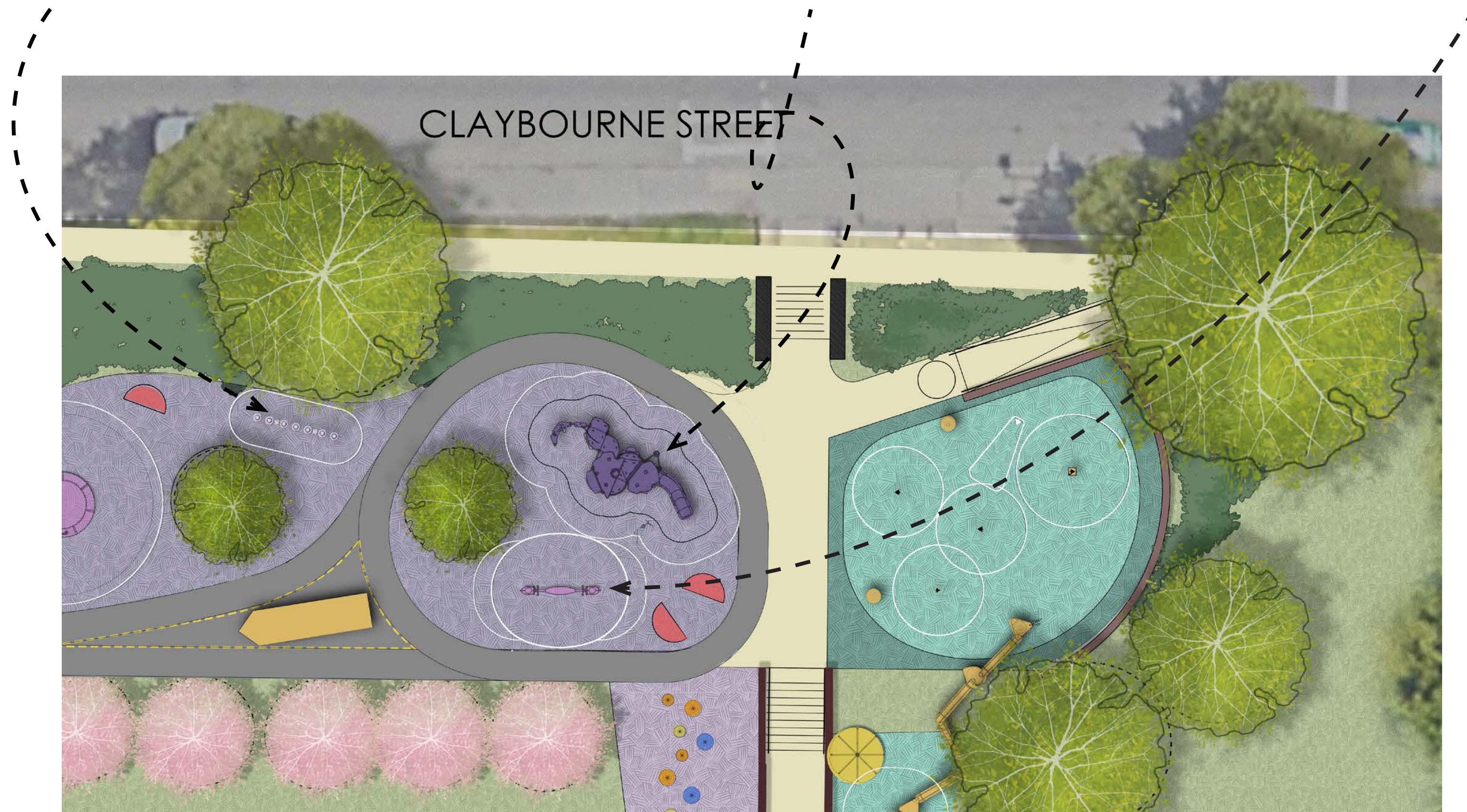
EMPEROR CHIMES



ORIGINATOR



HOPPER



CLAYBOURNE STREET



SWING



TOWER

ALT 1

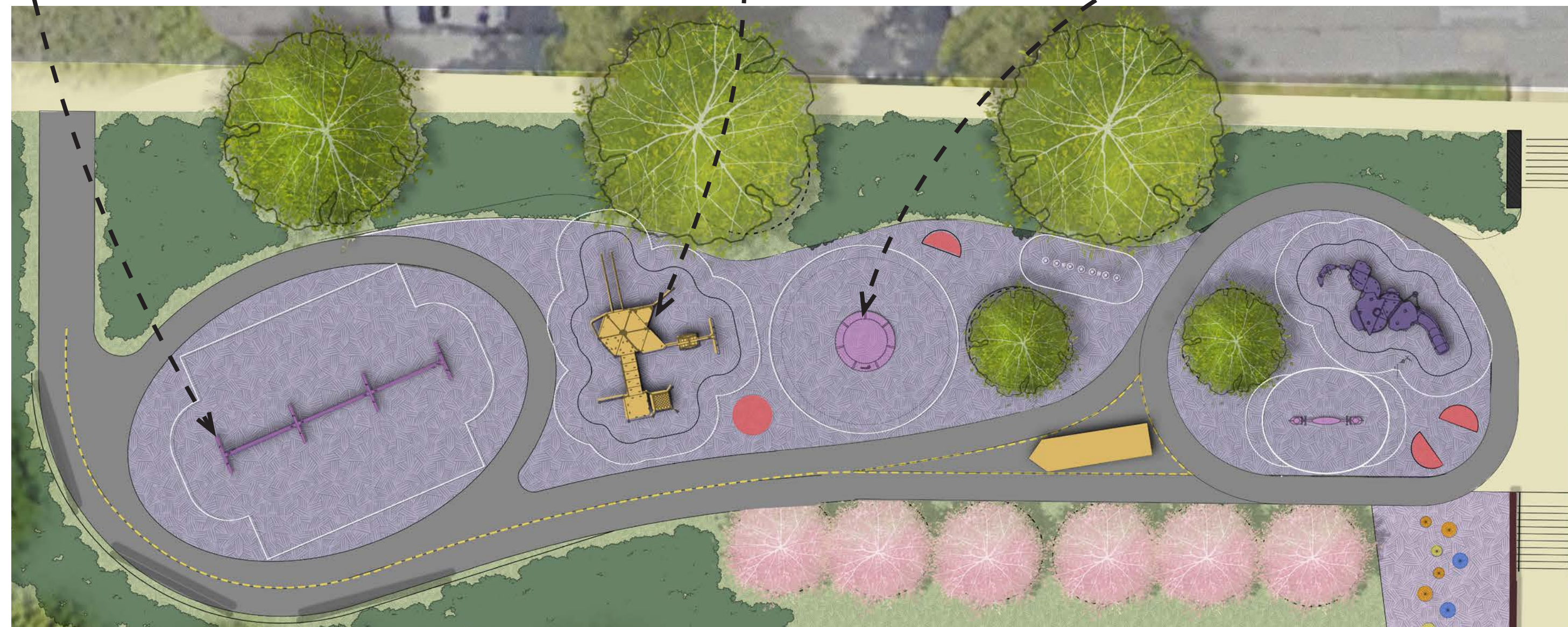


'NET TWISTER'

ALT 2



SUPERNOVA

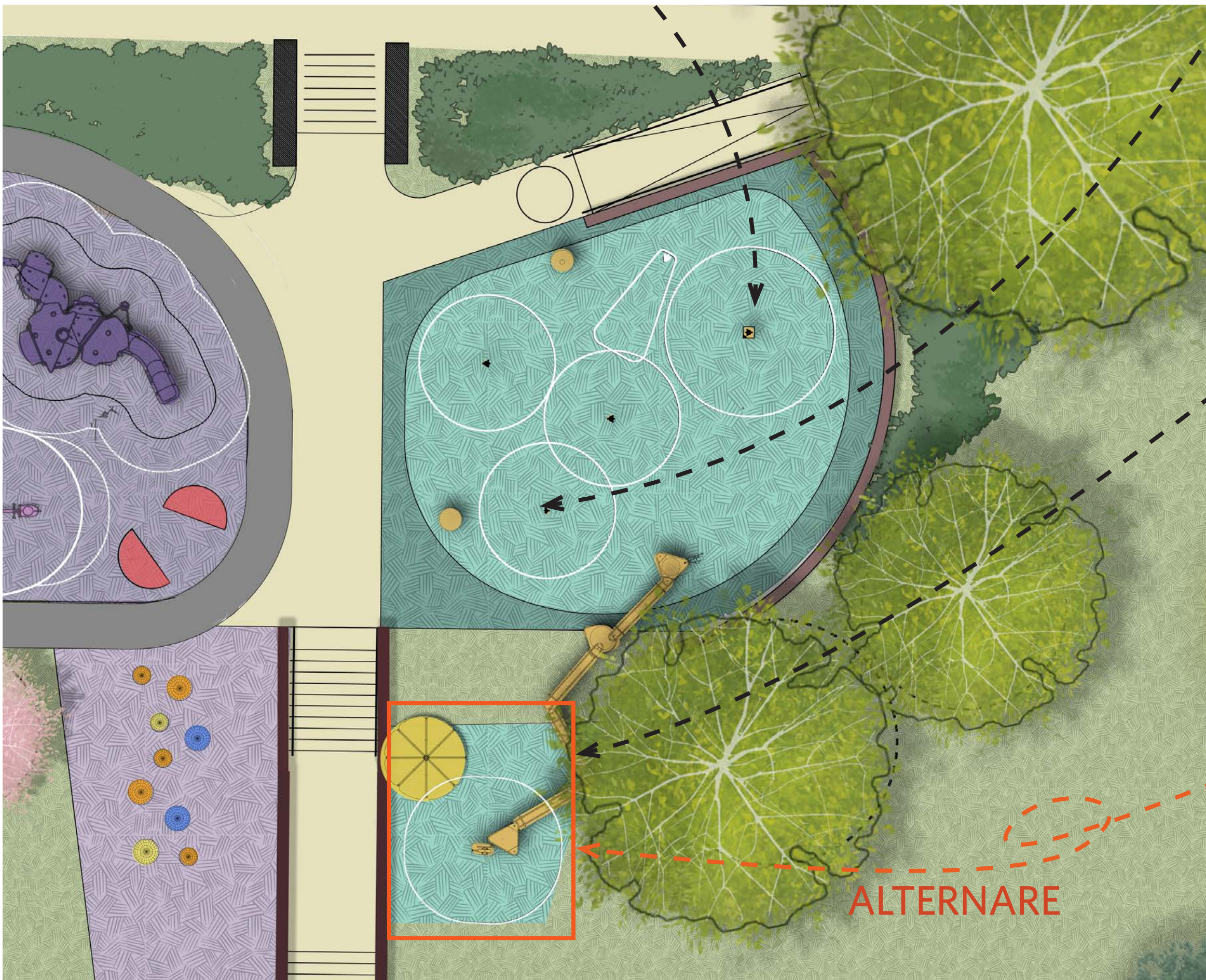




GROUND SPRAYS BY VORTEX



GROUND SPRAYS BY VORTEX



WATER RUNNEL



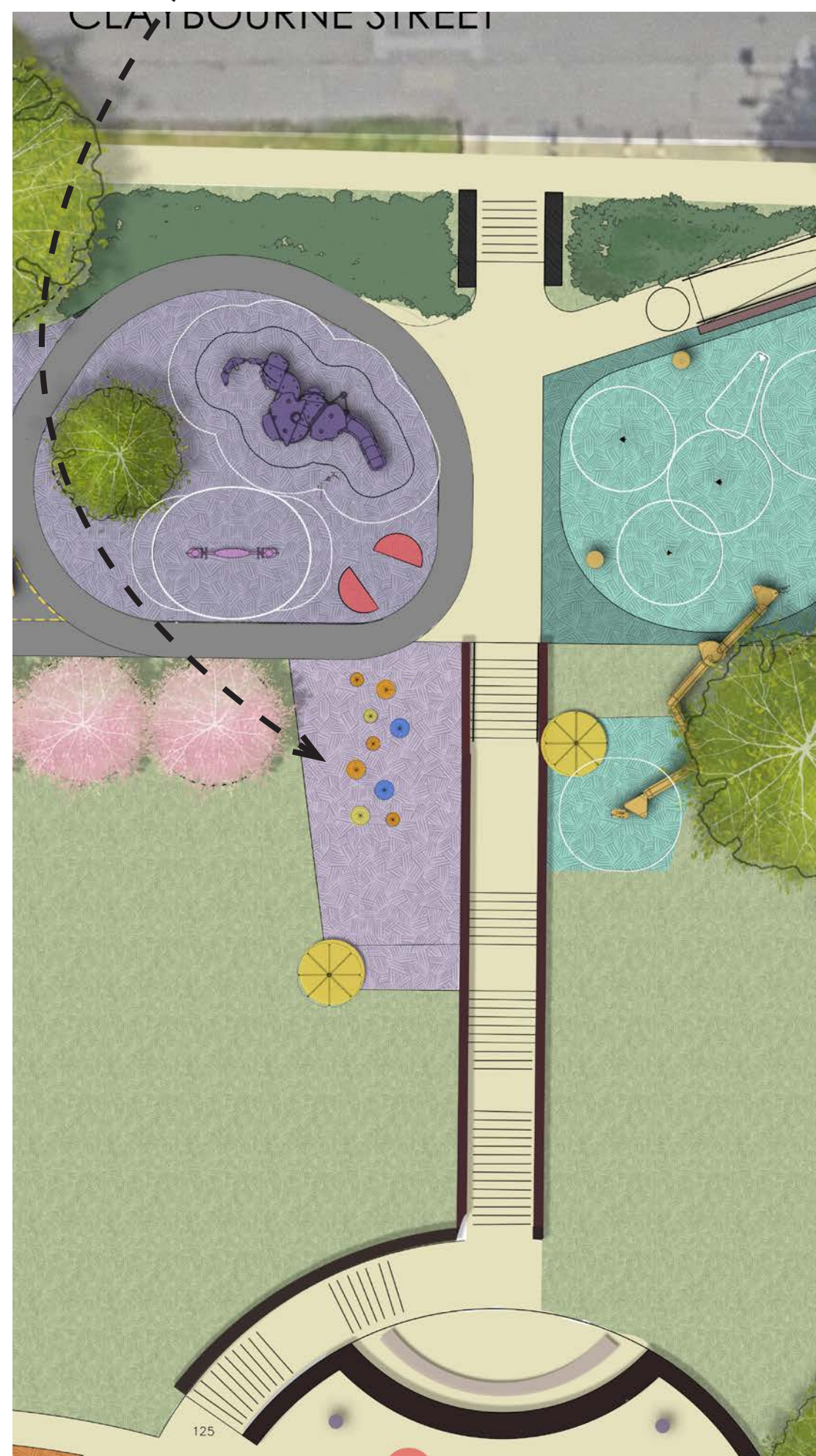
GORIC FREE STONE PUMP



SLOPE PLAY WITH ROPES AND HOLDS



EUROFLEX HALF BALLS





ASSISTED ROW/PUSH-UP



CROSS TRAINING COMBI 1



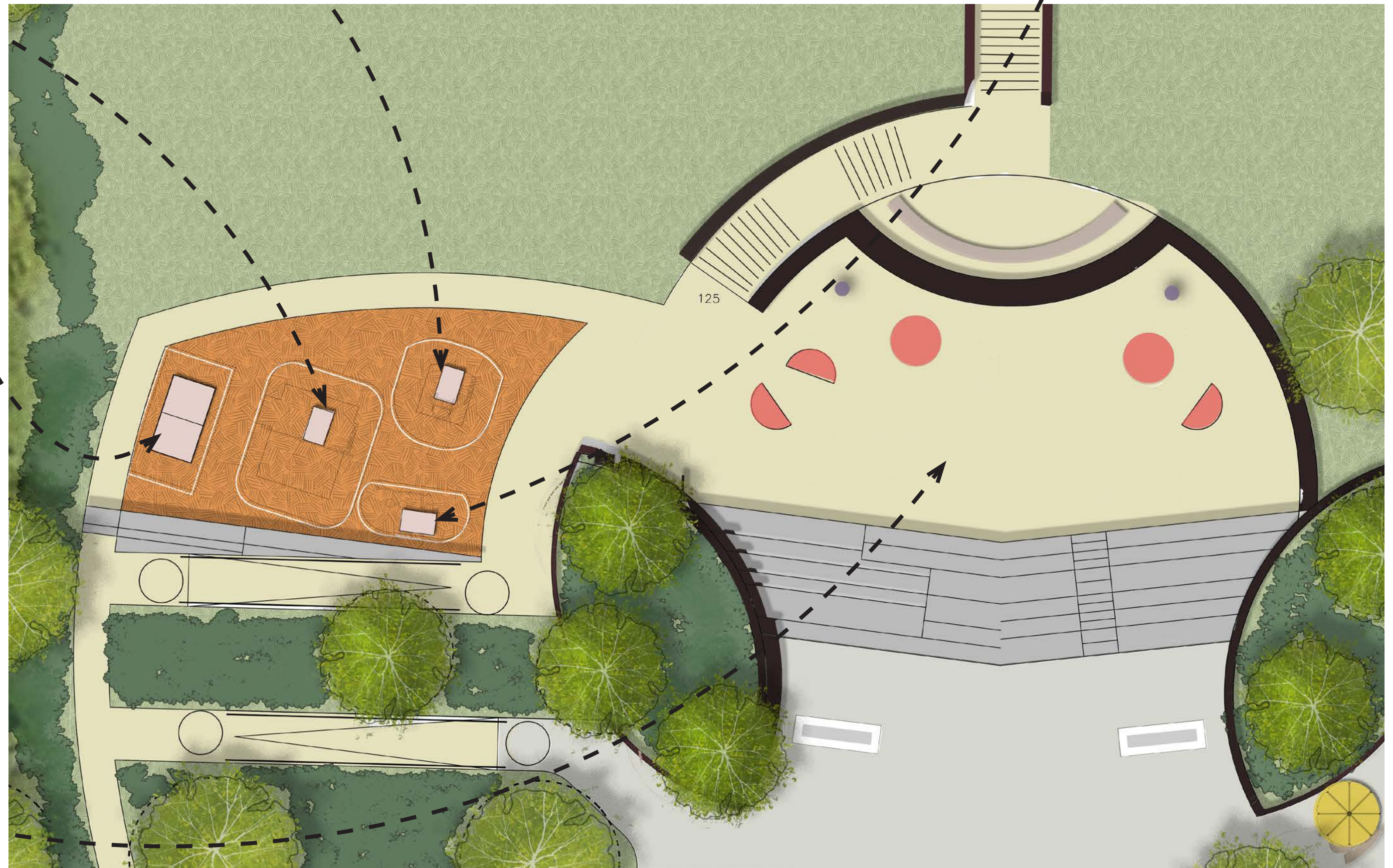
BALANCE



TABLE TENNIS TABLE



YOGA SPACE





'CHARLIE TABLE'



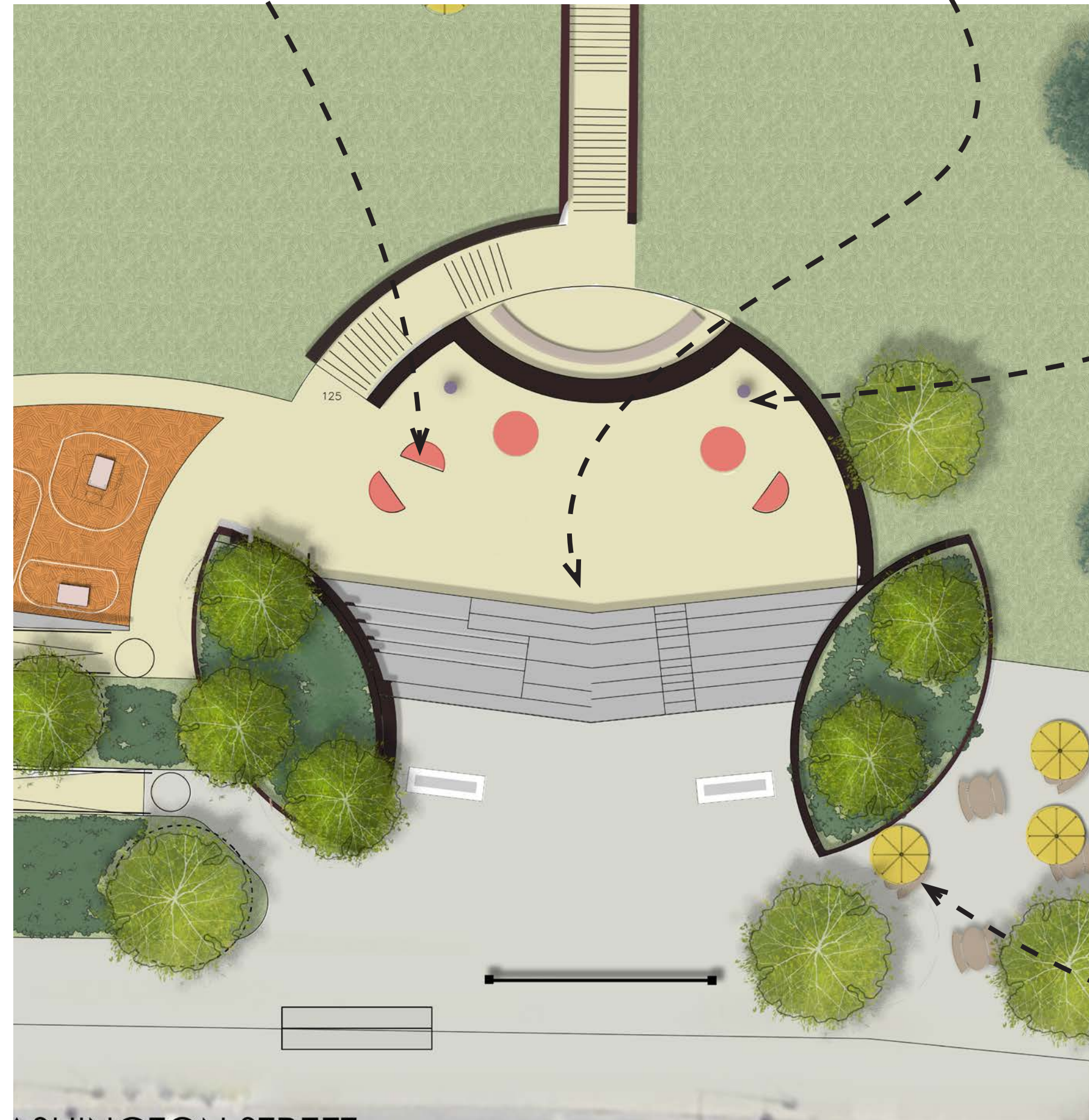
'STRIPE' BENCH



OVERLOOK SEATING



PAINTED STAIRS



TELESCOPES



BIRD HOUSES



SOLSTICE UMBRELLA

PARK COLOR PALETTE



TREE PROTECTION AND REMOVALS





LISTENING & DISCUSSION

Help us build great parks.
Let us know what matters to you.

THANK YOU!

For questions, maintenance requests or concerns regarding any of our parks contact 311

