

LIFE ALIVE ORGANIC CAFÉ

505 TREMONT ST
BOSTON, MA 02116

TABLE OF CONTENTS:

PROPOSED WORK FOR LIFE ALIVE TENANT SIGNAGE:

- 1 - Site Plan
- 2 - Existing Photos - Adjacent Tenants
- 3 - Existing Photos - Existing Conditions
- 4 - Exterior Elevation - Berkley, Warren
- 5 - Exterior Elevation - Tremont & Details
- 6 - Window Vinyl Graphics
- 7 - Window Vinyl Graphics

CONTACTS:

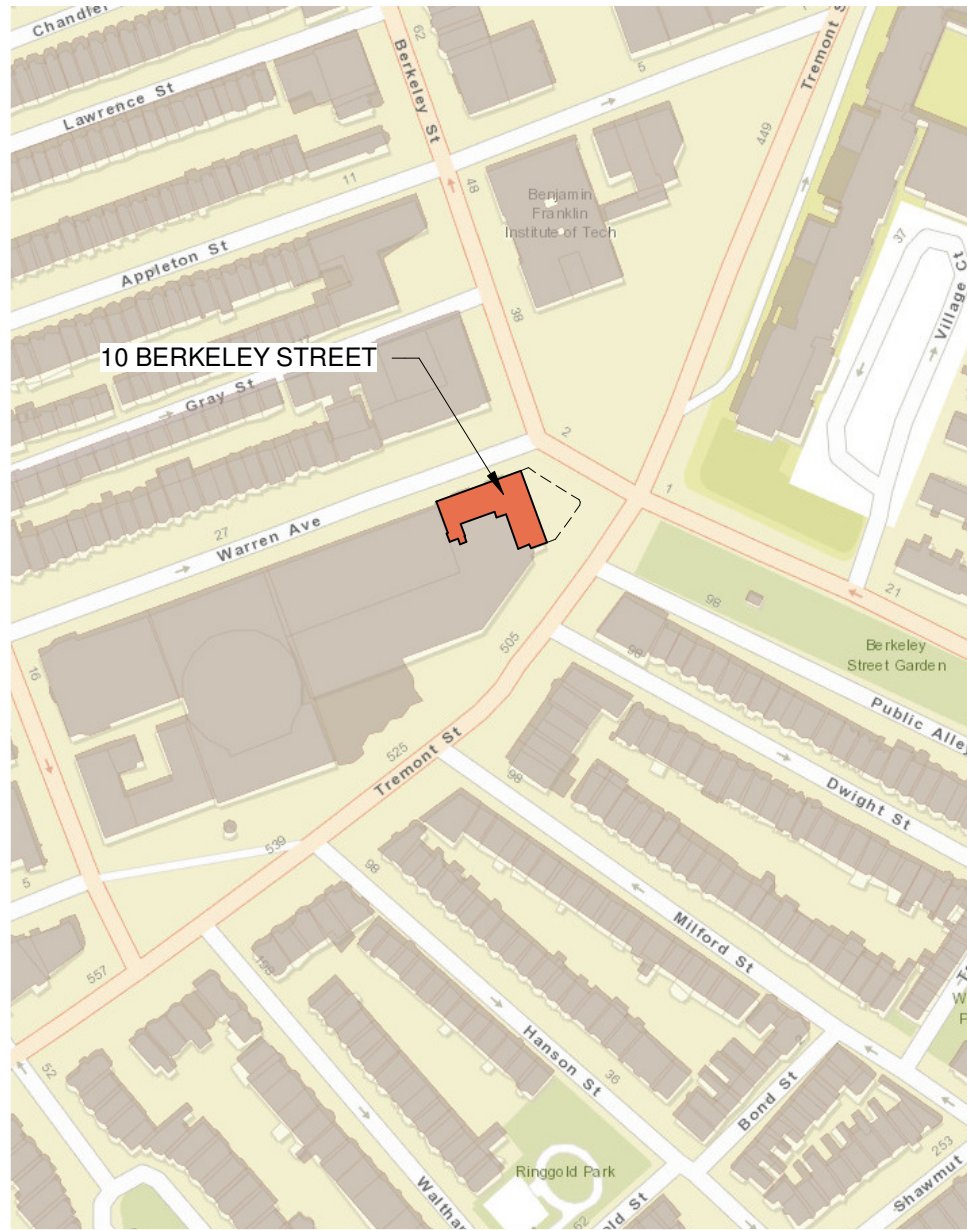
BKA ARCHITECTS

Keith Bettencourt
142 Crescent Street
Brockton, MA 02302
508-583-5603
kbettencourt@bkaarchs.com

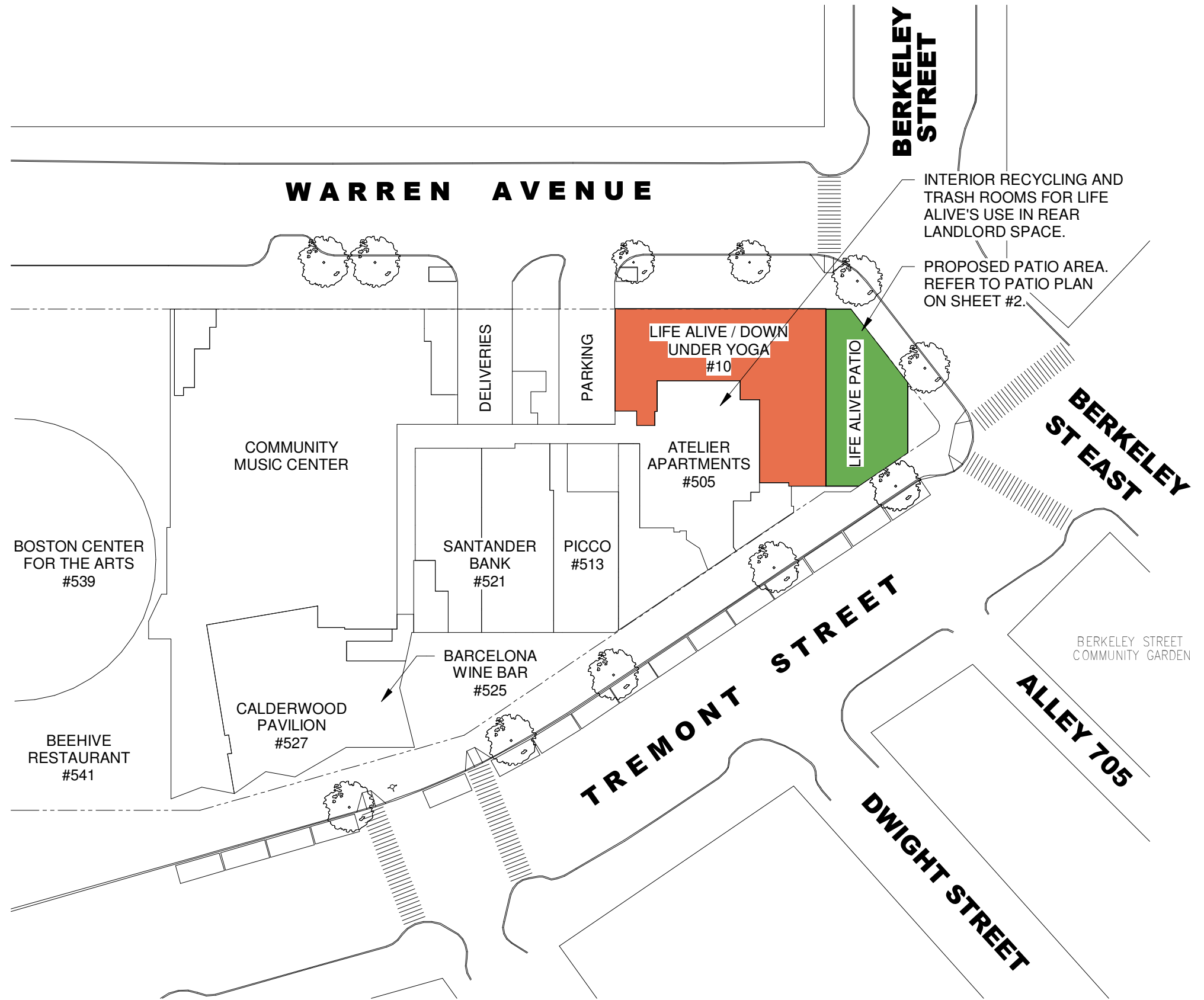
DPB DESIGN CONSULTANTS

Daniel Brennan, Jr
50 Holt Road
Andover, MA 01810
603-505-5633
dpbpermits@gmail.com





LOCUS MAP





ADJACENT SIGNAGE AND PATIOS
SIGNBAND, AWNING & LARGE AREAS FOR OUTDOOR DINING



ADJACENT TENANTS AND REAR CORNER OF FUTURE LIFE ALIVE SPACE



CORNER VIEW OF COLDWELL BANKER (FUTURE LIFE ALIVE)



EXISTING ADJACENT SIGNAGE



**EXISTING, RETRACTING BLUE AWNINGS,
TYP. OF (14) OVER (3) ELEVATIONS**

**EXISTING, BLACK SIGN BANDS,
TYP. OF (14) OVER (3) ELEVATION**



EXISTING EXTERIOR PHOTOS



WARREN STREET



PATIO AND MAIN ENTRANCE

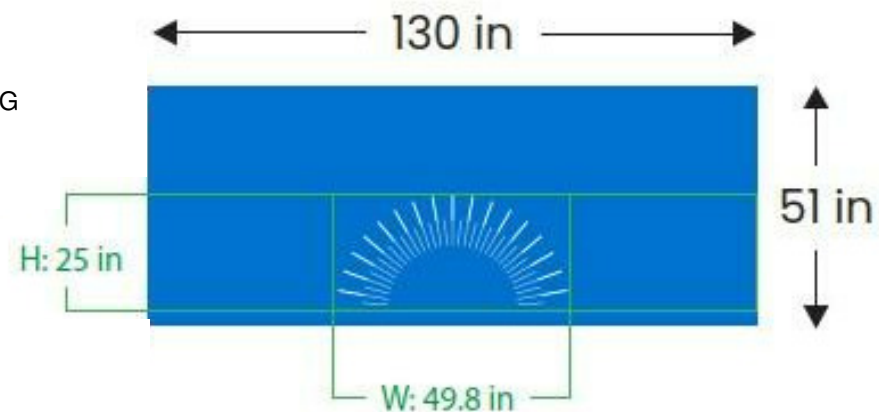


GENERAL NOTES:

- Sign Band:** Existing, 3/4" wood painted black
- Sign Band Text:** 1/2" flat cut out aluminum plate. Color to be silver painted brushed aluminum, all sides.
- Sign Band Mounting:** Threaded stainless steel studs with 1/2" spacers and exterior grade silicone adhesive
- Window Graphics:** Second surface vinyl cut graphics applied inside facing out.
- Awnings:** Pantone 285 CVC
- Awning Aprons:** Screen printed graphics, 8" text height
- Awning Panels:** Screen printed graphics less than 20% surface area



TPYPICAL AWNING



AWNING NOTE:
 PER ATELIER 505 SIGNAGE GUIDELINES
 AWNING LOGOS MUST BE CENTERED ON
 AWNING AND NOT EXCEED 20% OF AREA.
 LETTERING ON

SIGNAGE CALCULATIONS

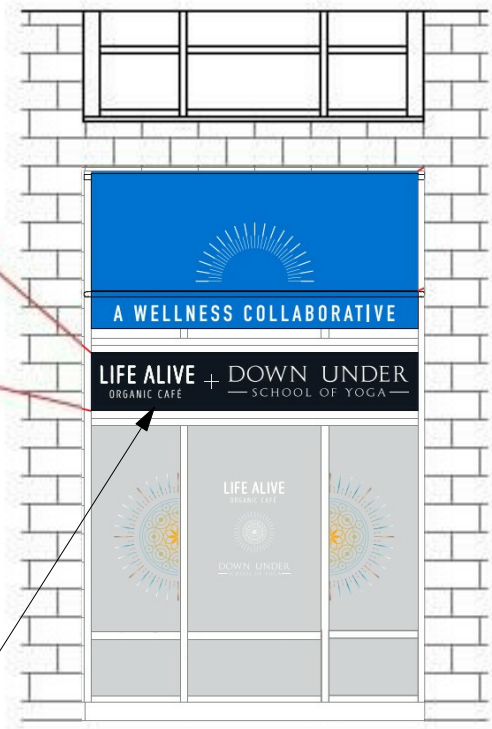
	ALLOWABLE	ACTUAL
PRIMARY SIGN	129"(L) x 16.5" (H) = 177.4 SF W/ 12" LETTERING	92.5"(L) x 16.5" (H) = 127.2 SF W/ 9.25" LETTERING
SECONDARY SIGN	129"(L) x 16.5" (H) = 177.4 SF W/ 12" LETTERING	92.5"(L) x 16.5" (H) = 127.2 SF W/ 9.25" LETTERING
AWNING GRAPHIC	20% MAX OF AWNING AREA (TYP OF 14)	GLASS AREA = 552.5 SF SIGN AREA = 103.75 SF PERCENTAGE = 18.7% APRON LETTERING= 10"

NOTE:
 ALL SIGNAGE DESIGNS CONFORM TO THE PRE-APPROVED ATELIER 505 TENANT SIGN DESIGN CRITERIA MANUAL



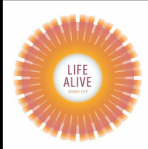
Letter Height 9.25 in

SECONDARY SIGN

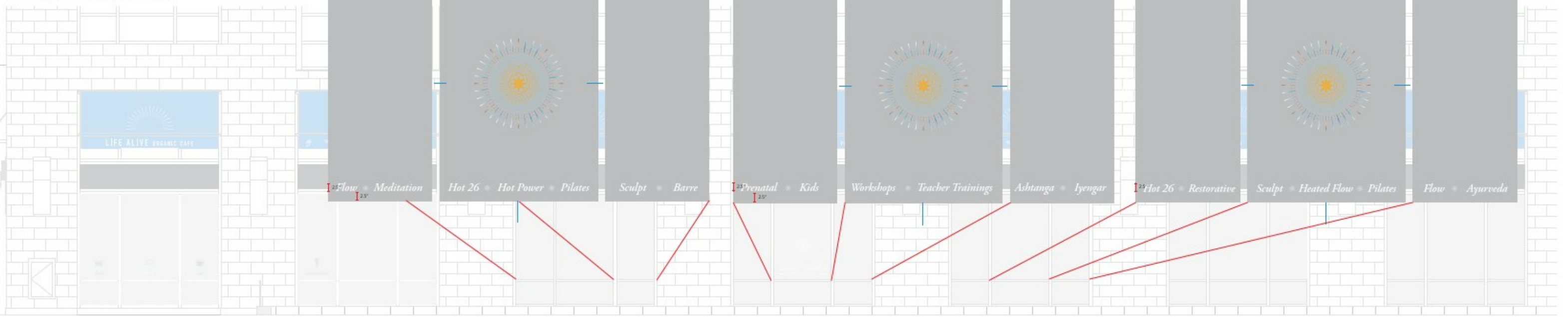


GENERAL NOTES:

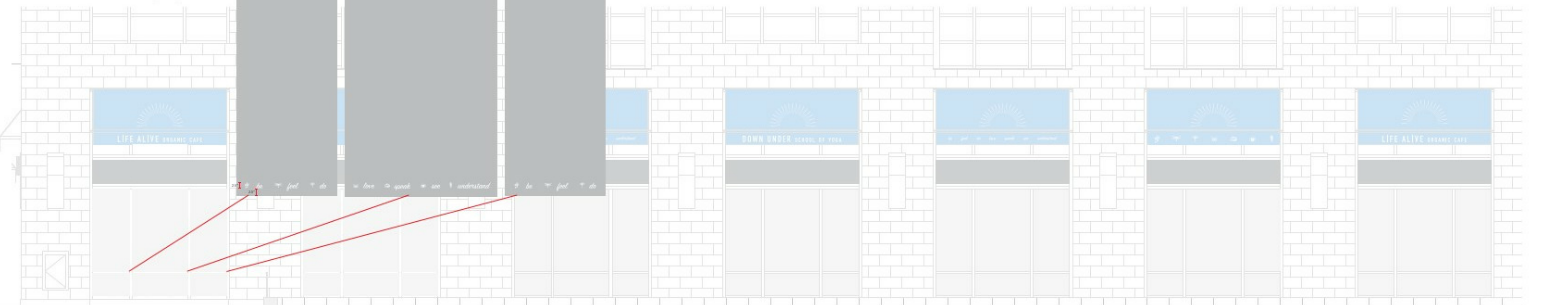
- Sign Band:** Existing, 3/4" wood painted black
- Sign Band Text:** 1/2" flat cut out aluminum plate. Color to be silver painted brushed aluminum, all sides.
- Sign Band Mounting:** Threaded stainless steel studs with 1/2" spacers and exterior grade silicone adhesive
- Window Graphics:** Second surface vinyl cut graphics applied inside facing out.
- Awnings:** Pantone 285 CVC
- Awning Aprons:** Screen printed graphics, 8" text height
- Awning Panels:** Screen printed graphics less than 20% surface area



WARREN STREET
WINDOW GRAPHICS DETAIL (RIGHT)



WARREN STREET
WINDOW GRAPHICS DETAIL (LEFT)

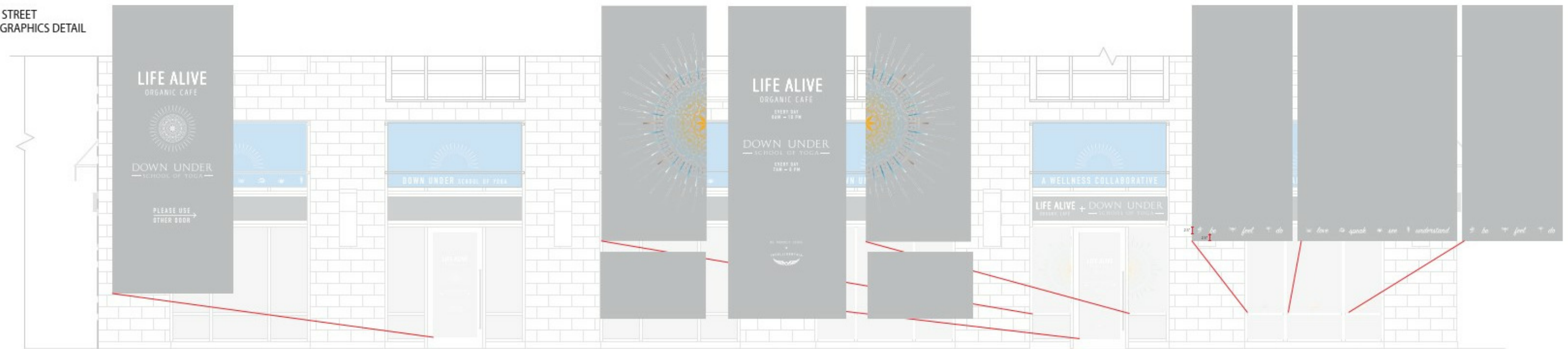


GENERAL NOTES:

- **Sign Band:** Existing, 3/4" wood painted Benjamin Moore impervex low luster metal and wood enamel—Black.
- **Sign Band Text:** 1/2" flat cut out aluminum plate. Painted silver metallic, all sides.
- **Sign Band Mounting:** Threaded stainless steel studs with 1/2" spacers and exterior grade silicone adhesive
- **Window Graphics:** Second surface vinyl cut graphics applied inside facing out, less than 20% surface area, 2.5" letter height.
- **Awnings:** Material—Sunbrella; Color—Pacific Blue #4601
- **Awning Aprons:** Screen printed graphics, 8" text height
- **Awning Panels:** Screen printed graphics less than 20% surface area



BERKELEY STREET
WINDOW GRAPHICS DETAIL



GENERAL NOTES:

Sign Band: Existing, 3/4" wood painted Benjamin Moore impervex low luster metal and wood enamel-Black.

Sign Band Text: 1/2" flat cut out aluminum plate. Painted silver metallic, all sides.

Sign Band Mounting: Threaded stainless steel studs with 1/2" spacers and exterior grade silicone adhesive

Window Graphics: Second surface vinyl cut graphics applied inside facing out, less than 20% surface area.

Awnings: Material-Sunbrella; Color-Pacific Blue #4601

Awning Aprons: Screen printed graphics, 8" text height

Awning Panels: Screen printed graphics less than 20% surface area

