

BENVINDU A INKONTRU VIRTUAL DI “PLEASANT STREET”

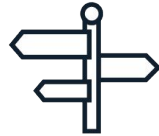
Aprisentason ta kumesa dentu di alguns minutos.



Nhos pódi labanta mon pa fazi un pregunta en voz altu. Ó ki nu abri diskuson, nhos pódi skrebi perguntas na “chat box”, tanbe.



Nhos mikrofoni sta desligadu.

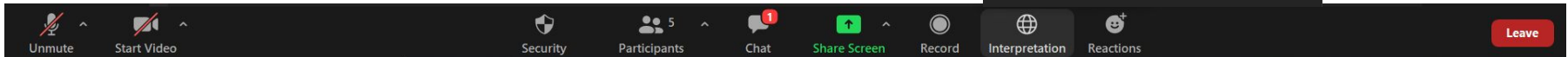
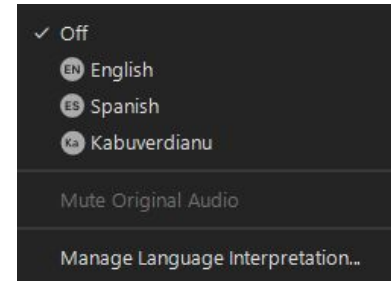


boston.gov/pleasant-street
pleasant.street@boston.gov
617-635-1378

Welcome! ¡Bienvenidos!

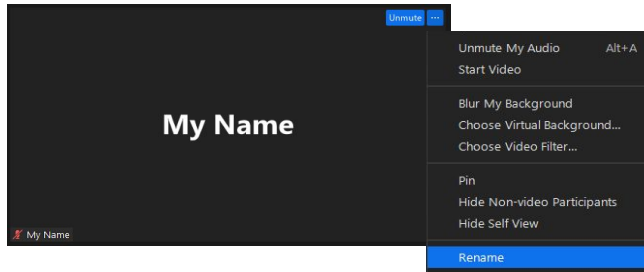
Pa interpretason na Spanhol, Vietenamês, ó Kabuverdianu:

- ▶ Bai pa barra di kontrolu na parti di baxu di ekrán y klika “Interpretation”.
- ▶ Klika na lingua ki bu kre obi.



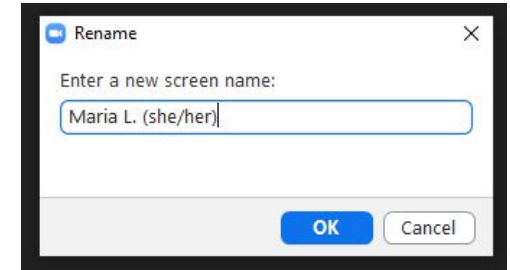
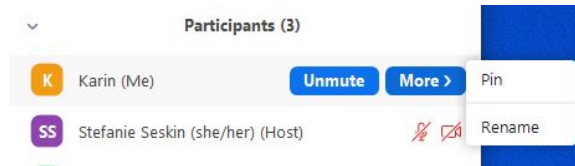
Welcome!

- ▶ Es inkontru ta ser gravadu.
- ▶ Atualiza bu nómi na Zoom pa inklui nómi ki bu ta prefiri y, si bu ta txinti konfortavel, poi bus pronomis.



Click the three dots in the top right of your video

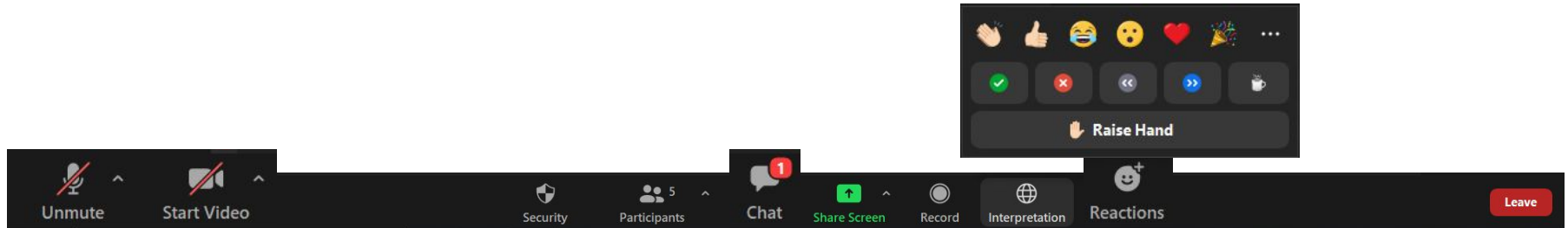
OR next to your name in the "participants" list



Add your pronouns after your name

Welcome!

- ▶ Nhos mikrofonis sta desligadu. Nhos ten ki liga pa papia. Tomandu parti via tilifóni? Presiona *6 pa liga mikrofonu.
- ▶ Nhos pódi uza opson di reagi sen papia.
- ▶ Labanta mon si bu teni un pergunta. Si pu txoma pa inkontru, uza *9 pa labanta mon.





Un **PLEASANT STREET** Mas Kalmu i Seguru

Kuarta feira, dia 13 di abril, 6:30 di tardi

Agenda

6:30 ▶ Introduson

- 6:35 ▶ Apresentason:
- Objektivu di projetu
 - Kuzé ki dja nu obi ti gósi li
 - Mudansas prupostu

- 6:50 ▶ Oportunidadi pa kontribuison:
- Kuzé ki bu gosta sobri mudansas prupostu
 - Perguntas ki bu ten sobri mudansas prupostu

Oí!



Jen Rowe (el/es)

Planifikadora, Transporti
Ativu
Boston Transportation
Department
jennifer.rowe@boston.gov

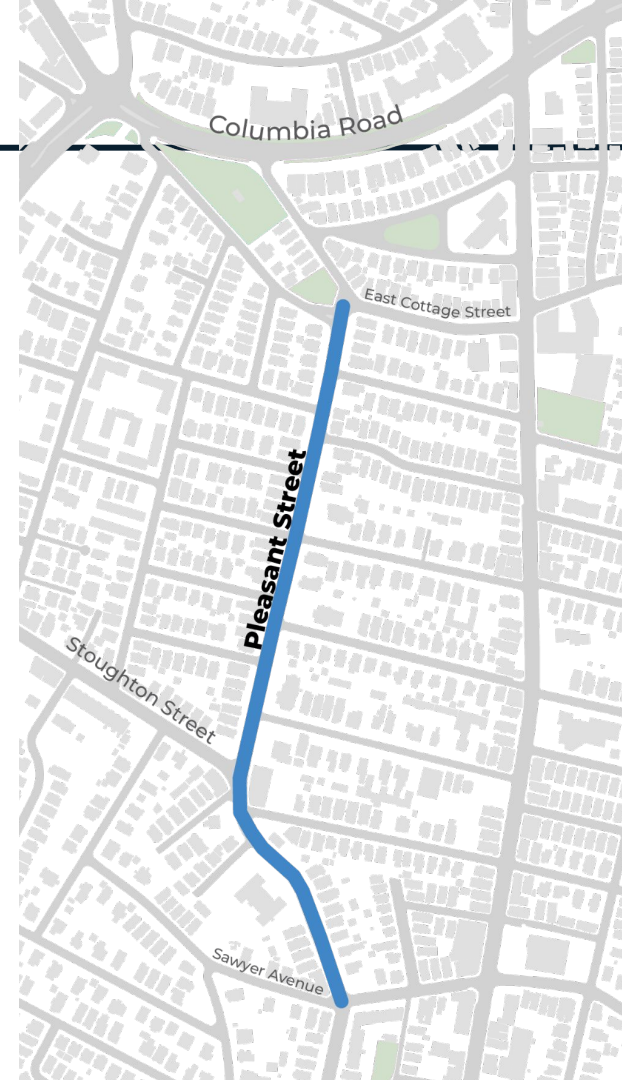


Dan Merrow (he/him)

Inginheru Sr, Transporti Ativu
Boston Transportation Department
daniel.merrow@boston.gov

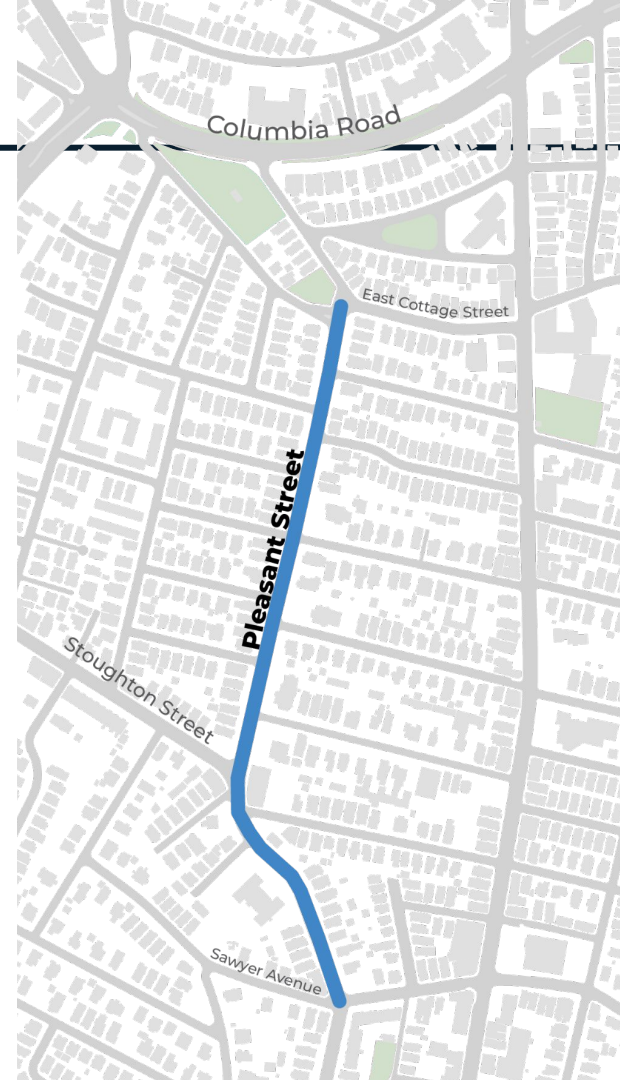
Objektivos di Prujetu

- ▶ Kalma vilosidadi di tráfikú
- ▶ Fazi pasaderas midjor pa:
 - Pesoas na biskleta y ta anda,
 - minínus,
 - adultus idosu,
 - pesoas ku di difisiênsia



Ãmbitu di projetu

- ▶ Nu podi fazi mudansas na “Pleasant Street” y ses kruzamentus ki ka sta sinalizadu.
- ▶ Nu ka ta fazi mudansas na kruzamentus sinalizadus na “Stoughton Street”.

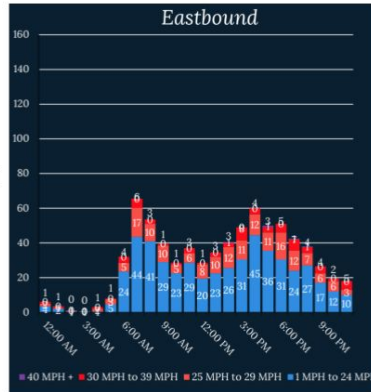


Mo ki nu ta kumesa nos prusesu di dizenhu

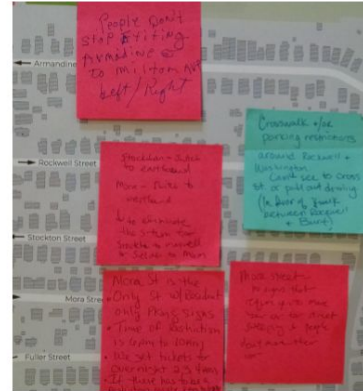
Observason



Dadus di Trafiku



Nhos kumentarius



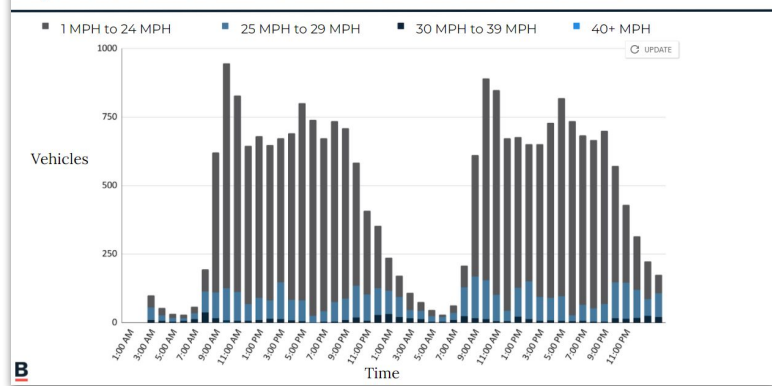
Prupossta di Dizenhu



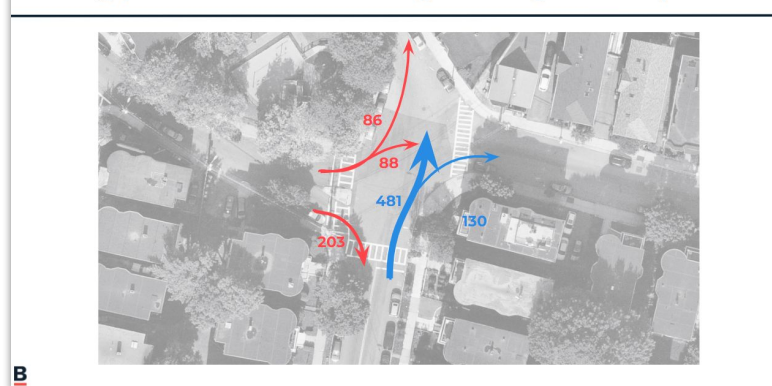
Nu koleta dadus di Otubru di 2021

- ▶ Nu koleta numeru di veikulus y ses velosidadi na tres lugar
- ▶ Nu konta mó ki pesoas andandu, na biskleta, y guiandu uza kruzamentu na “East Cottage Street”

Speeds near Edward Everett School



Driving patterns at East Cottage during the AM peak



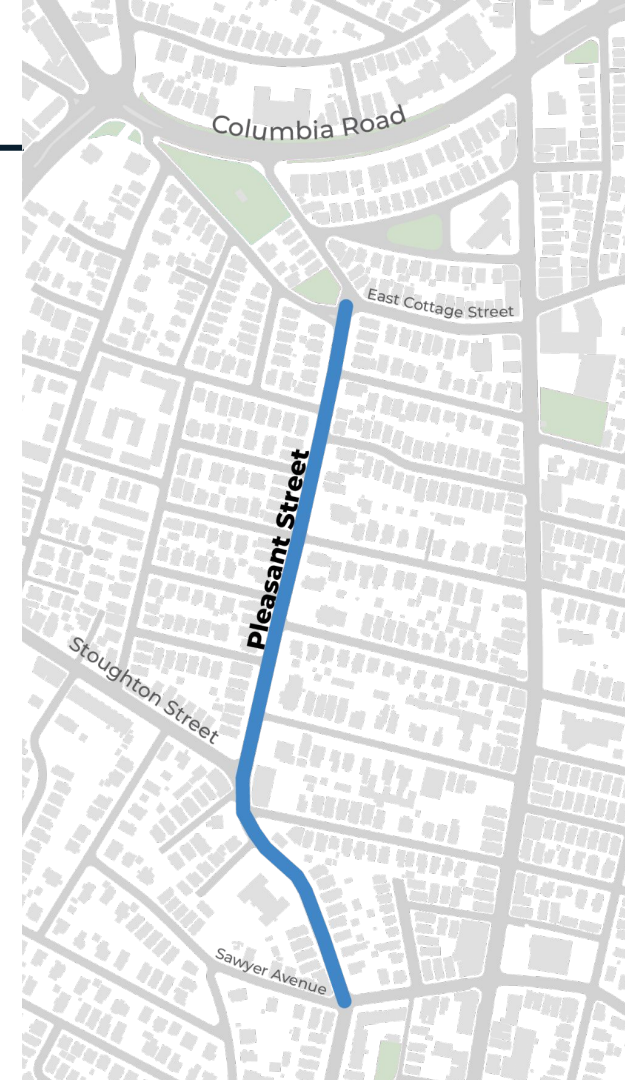
Mó ki nu obi di nhos ti gósi:

- ▶ Emails y tilifonemas risebidu dipós di manda postal pa kureiu
- ▶ Vizita ta anda na 23 di Otubru di 2021
- ▶ Inkontru virtual na 7 de Dizembru di 2021
- ▶ En progresu: Konversason ku asionistas ki ka é residenti (ex: Edward Everett School)



Nu obi mó:

- ▶ Pasaderas ka ta trazi sensason di siguransa
- ▶ Visibilidadi é mau
- ▶ Kondutores ta guia na forsa y ta fazi kurvas rápidu
- ▶ Pesoas ta uza strada moda un atalhu, inkluindu kondutores di kamion grandi, barkus-patu, y otokaru



Nu fazi trabadju di ingenharia di kampu

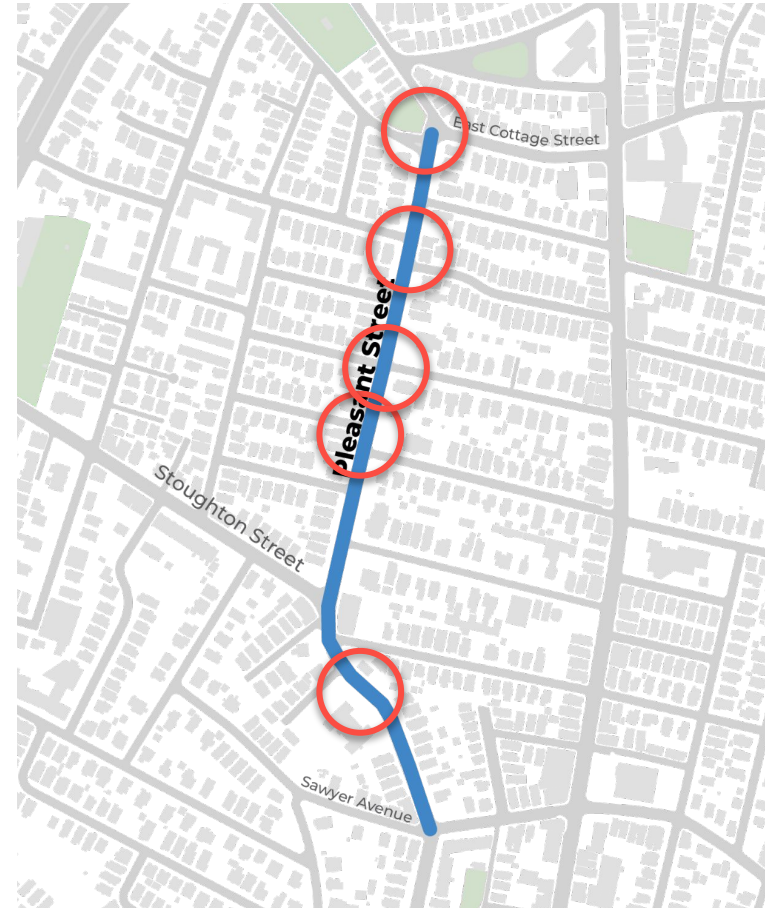
- ▶ Nu observa txegada y saida di “Edward Everett Elementary School”
- ▶ Nu fazi inkéritu di kampu
- ▶ Toma nota di lugalizason di utilidadis
- ▶ Fazi avaliason di mudansas potencial baseadu na nos objetivu di prujetu y nhos prioridadi

Mudansas prupostu

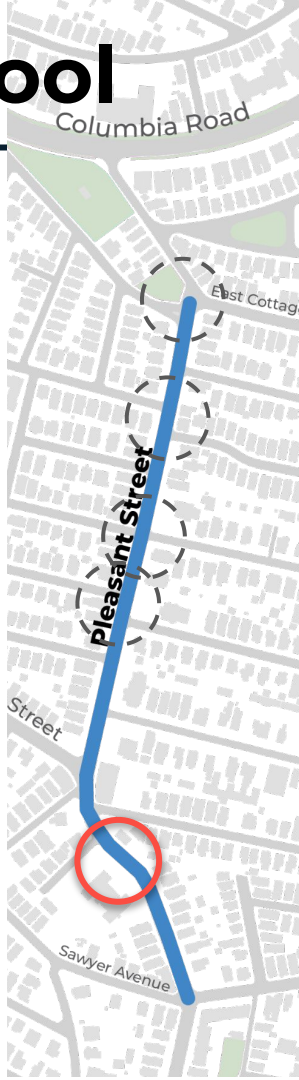
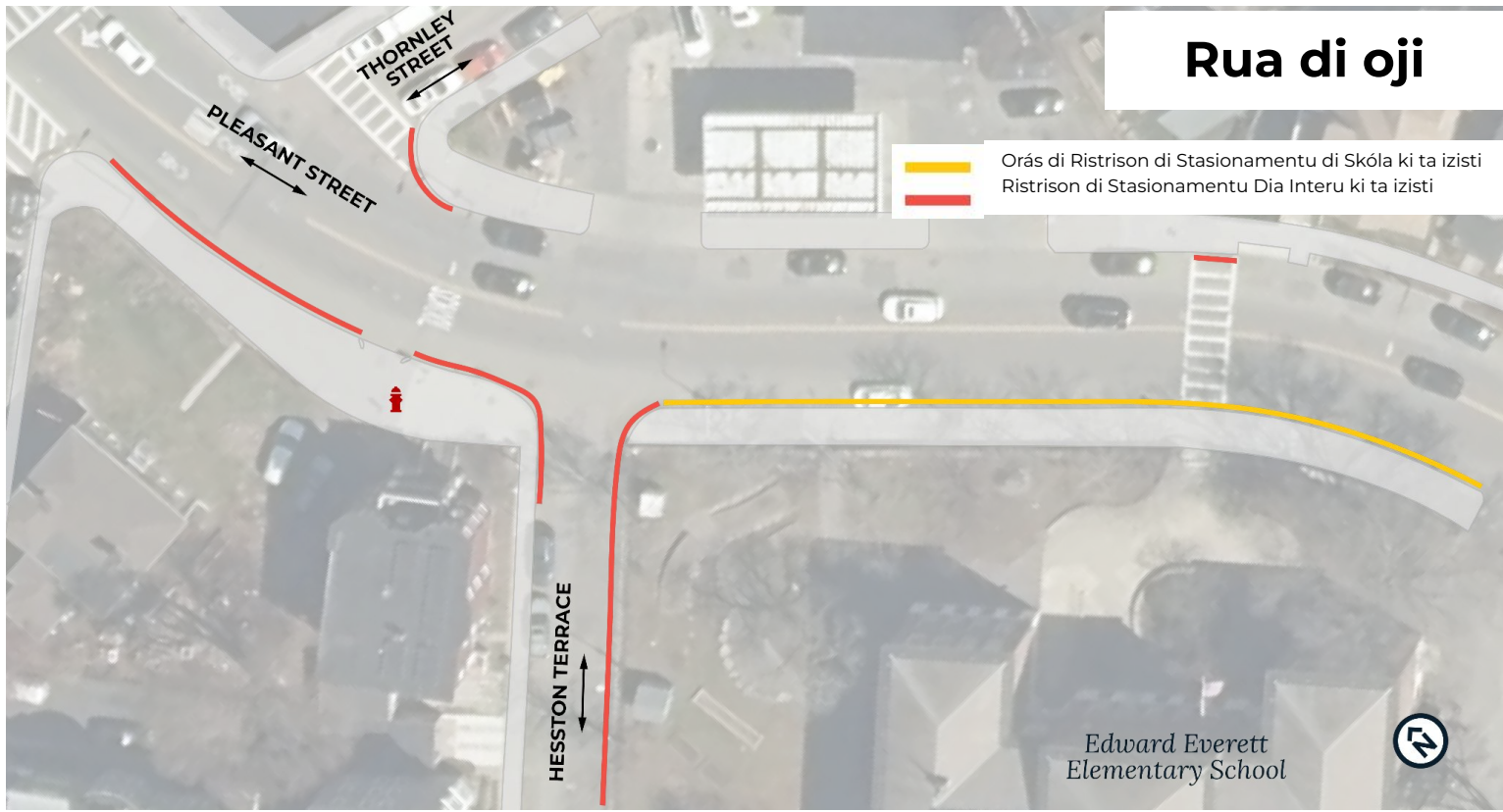


Nu sta propoi mudansas na sinku kruzamentu

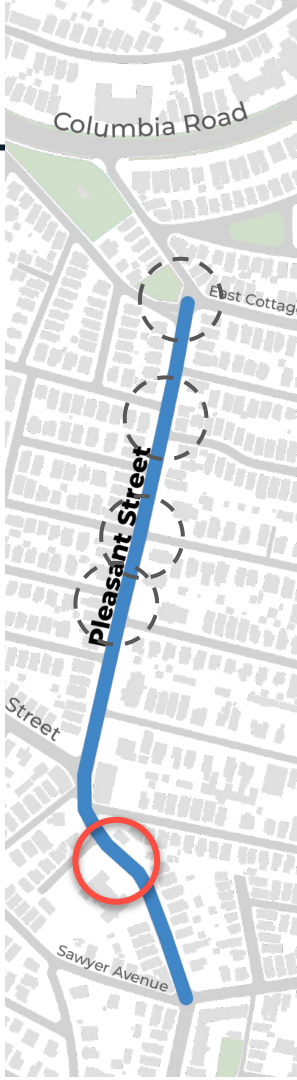
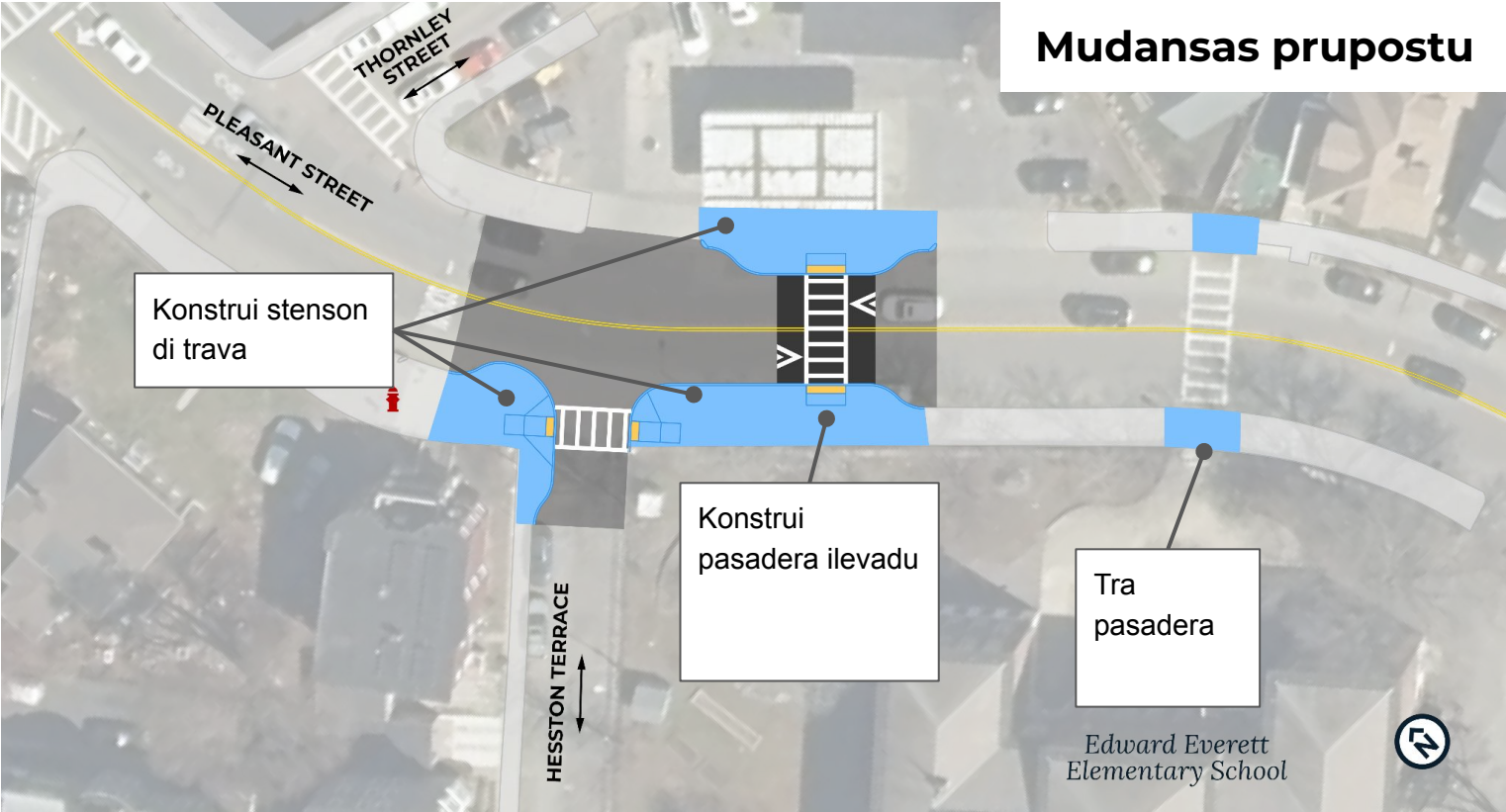
- ▶ Edward Everett School
- ▶ Morrill y Victoria Streets
- ▶ Mayfield Street
- ▶ Willis y Taft Streets
- ▶ East Cottage y Pond Street



Pasadera di Skóla Edward Everett School



Edward Everett School crosswalk



PASADERAS ILEVADU

Pasaderas ilevadu sta a mesmu nivel di paseiu. Es ta fazi kondures branda y ta ter mas facil odja pesoas ta kruza.

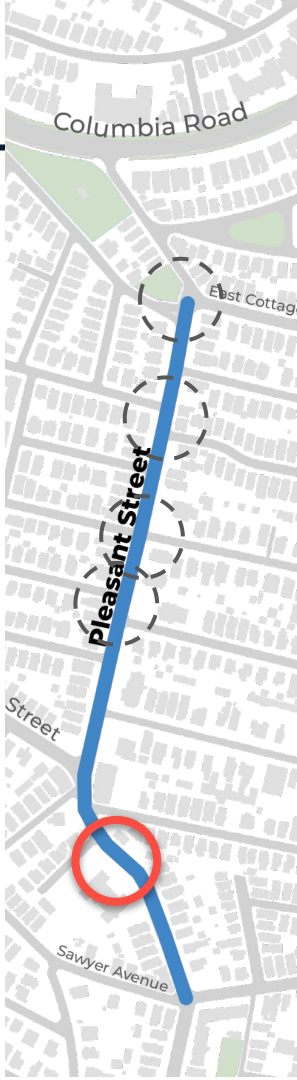
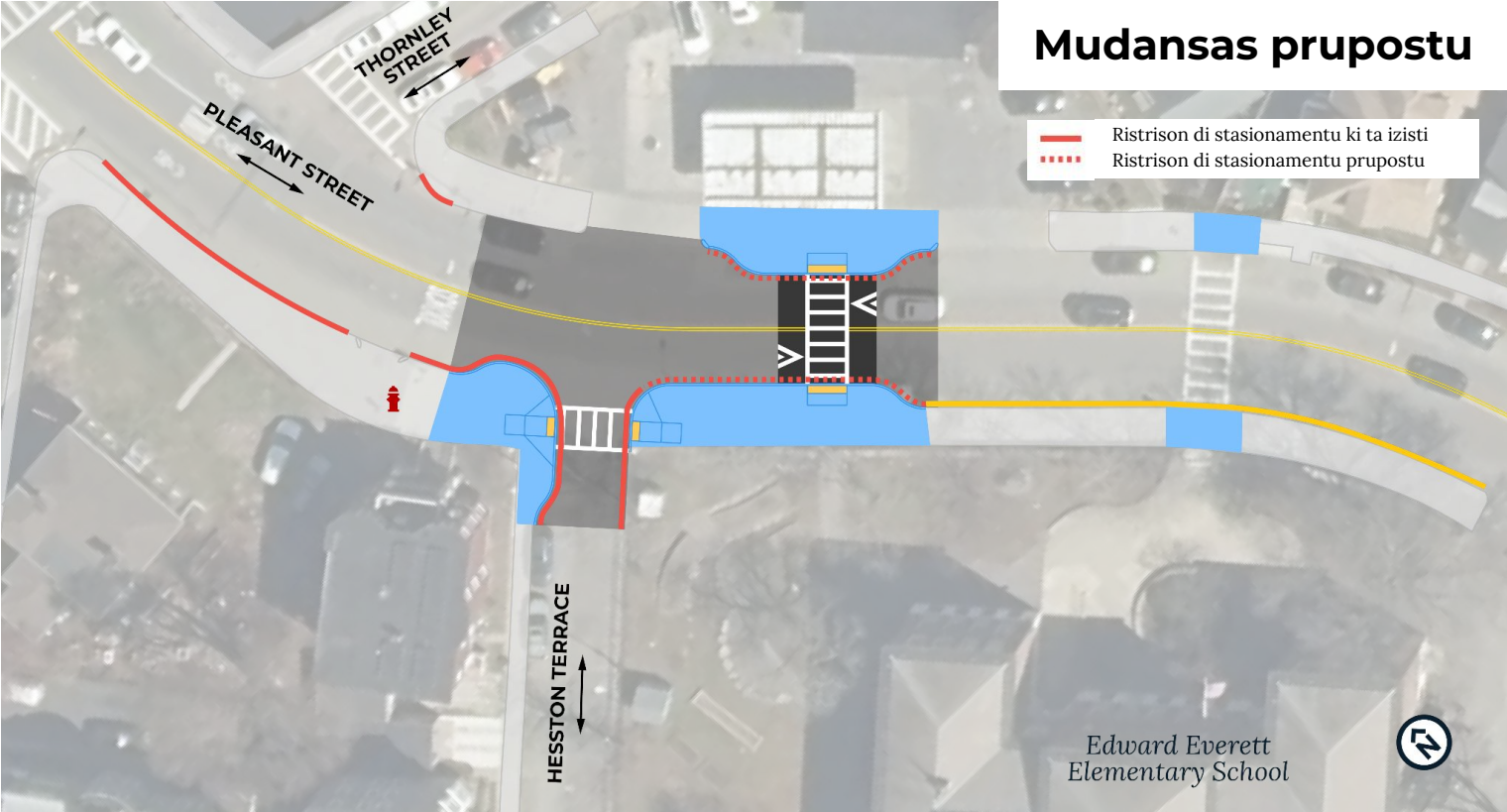


ISTENSON DI TRAVA

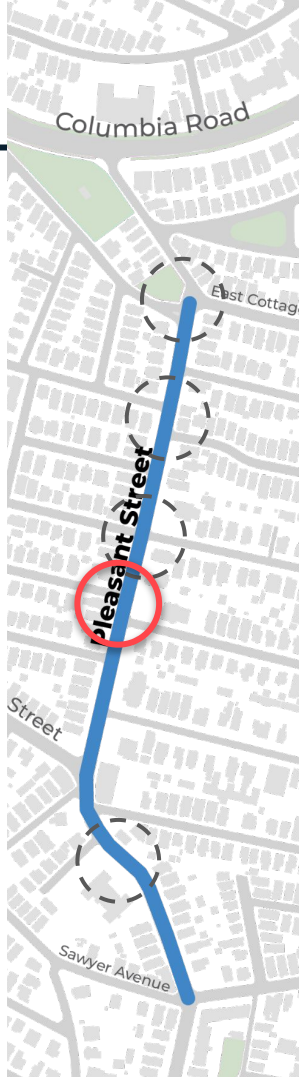
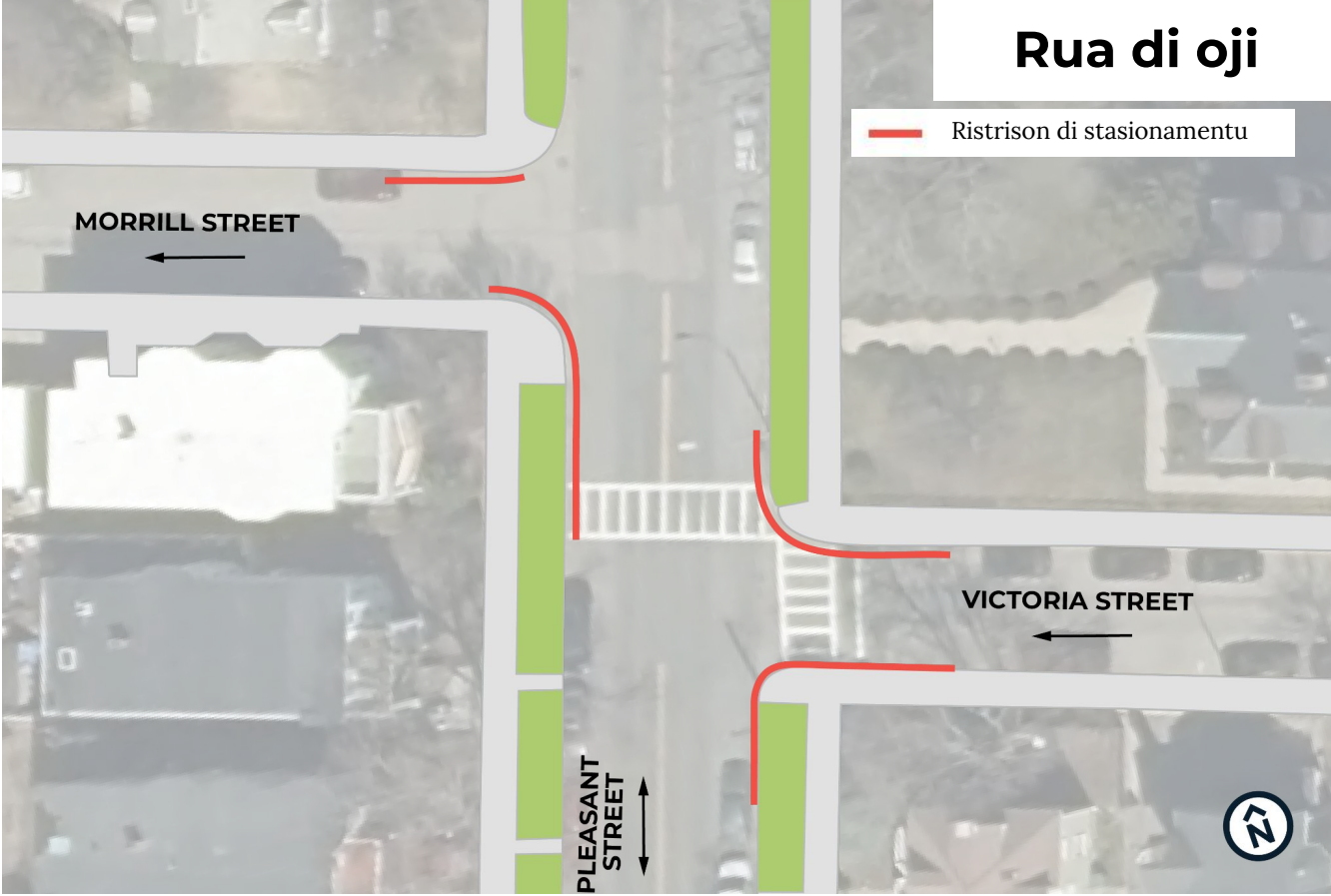
Istenson di trava kria un kruzamentu mas kurtu. Paseiu é istentidu pa dentu di rua mas ó menus 6 pé.



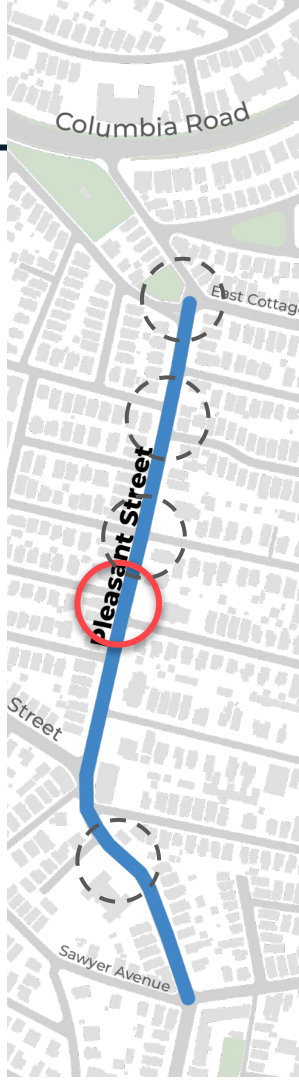
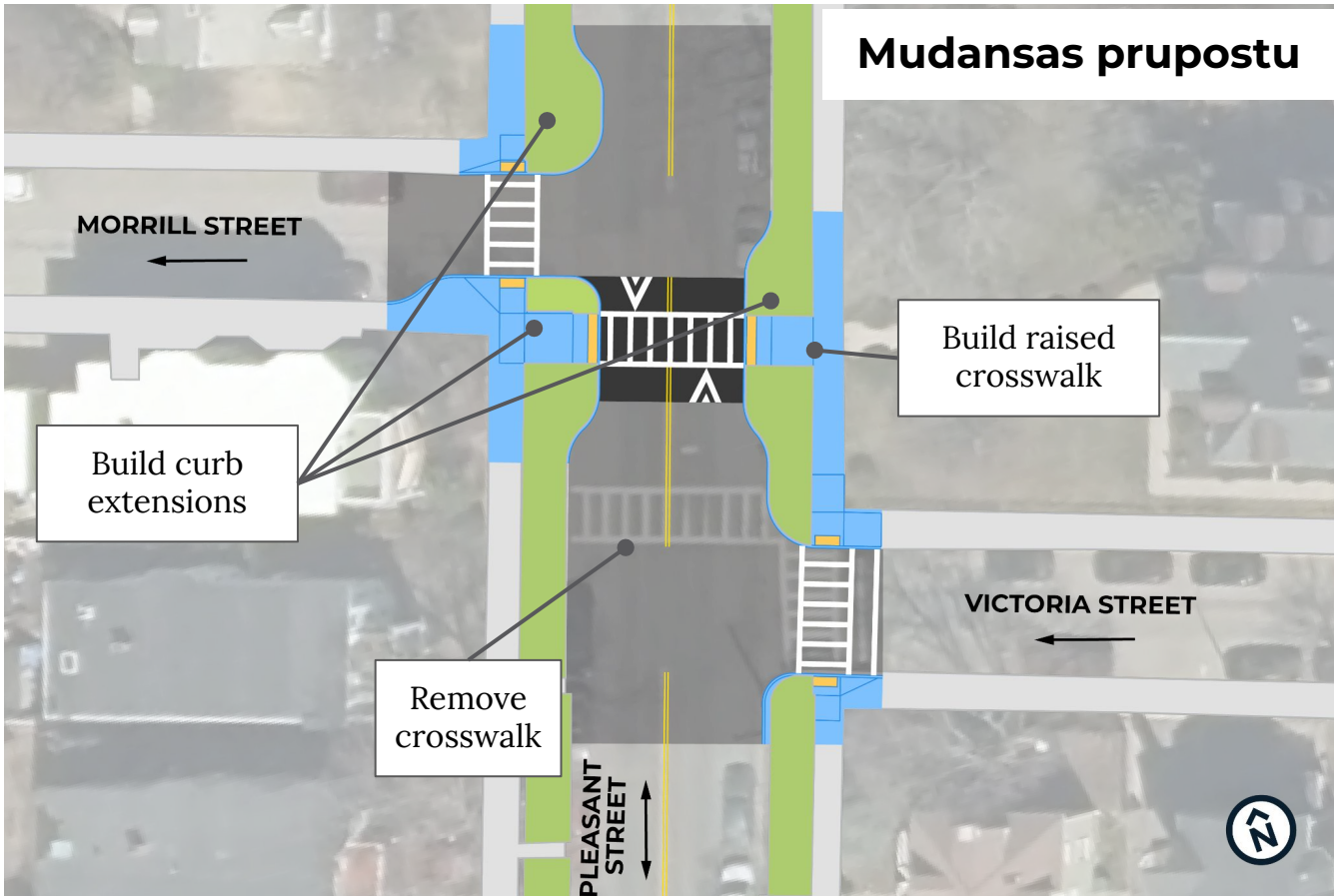
Edward Everett School crosswalk



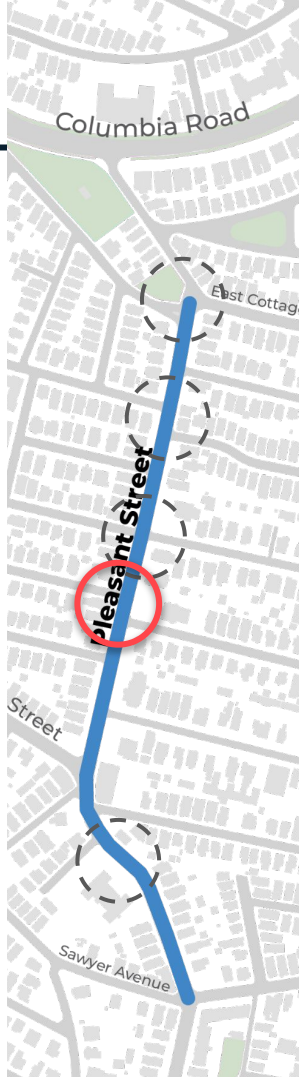
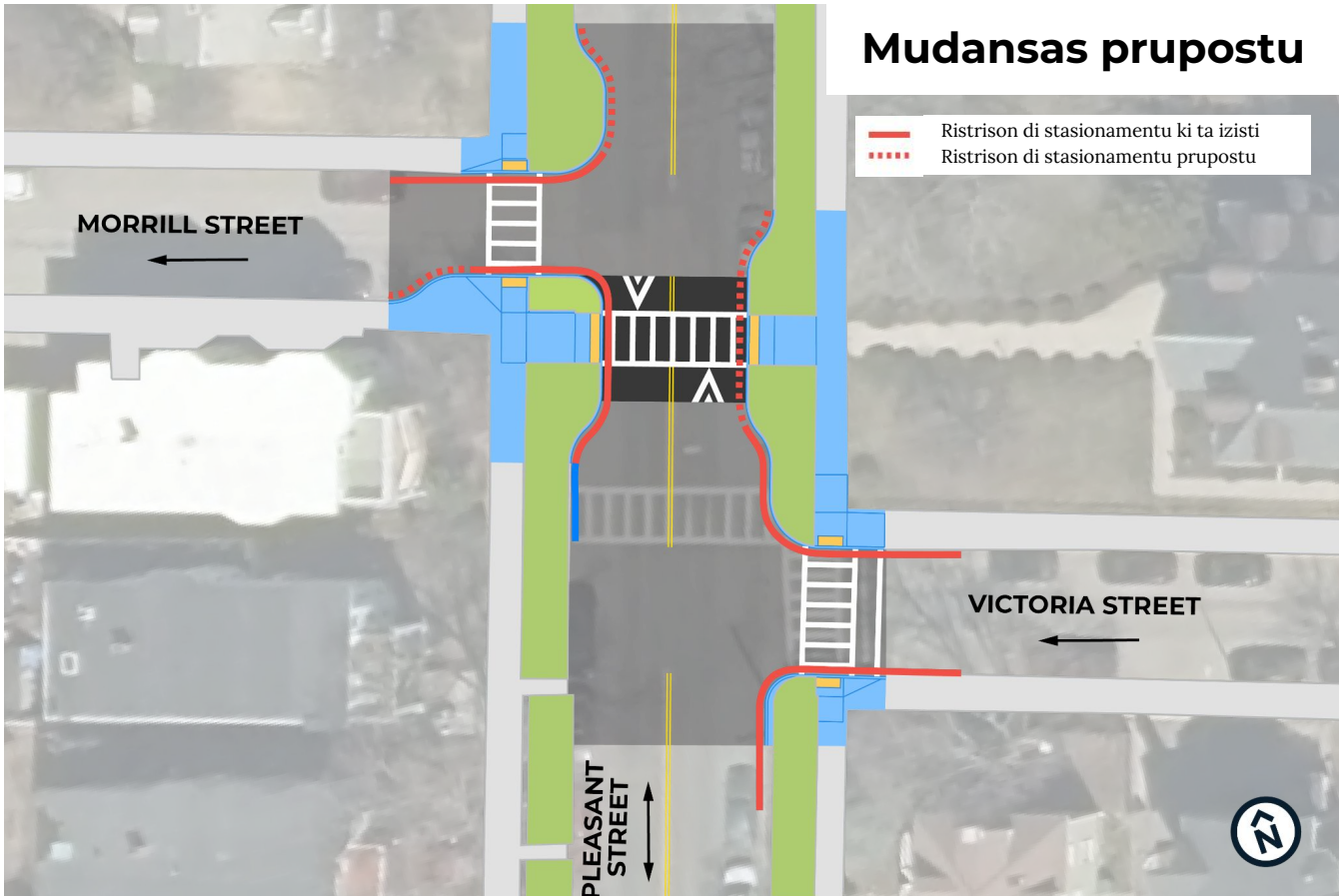
Morrill and Victoria Streets



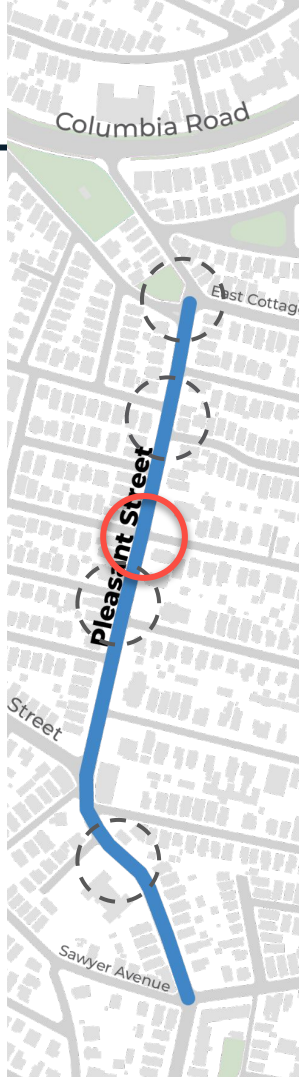
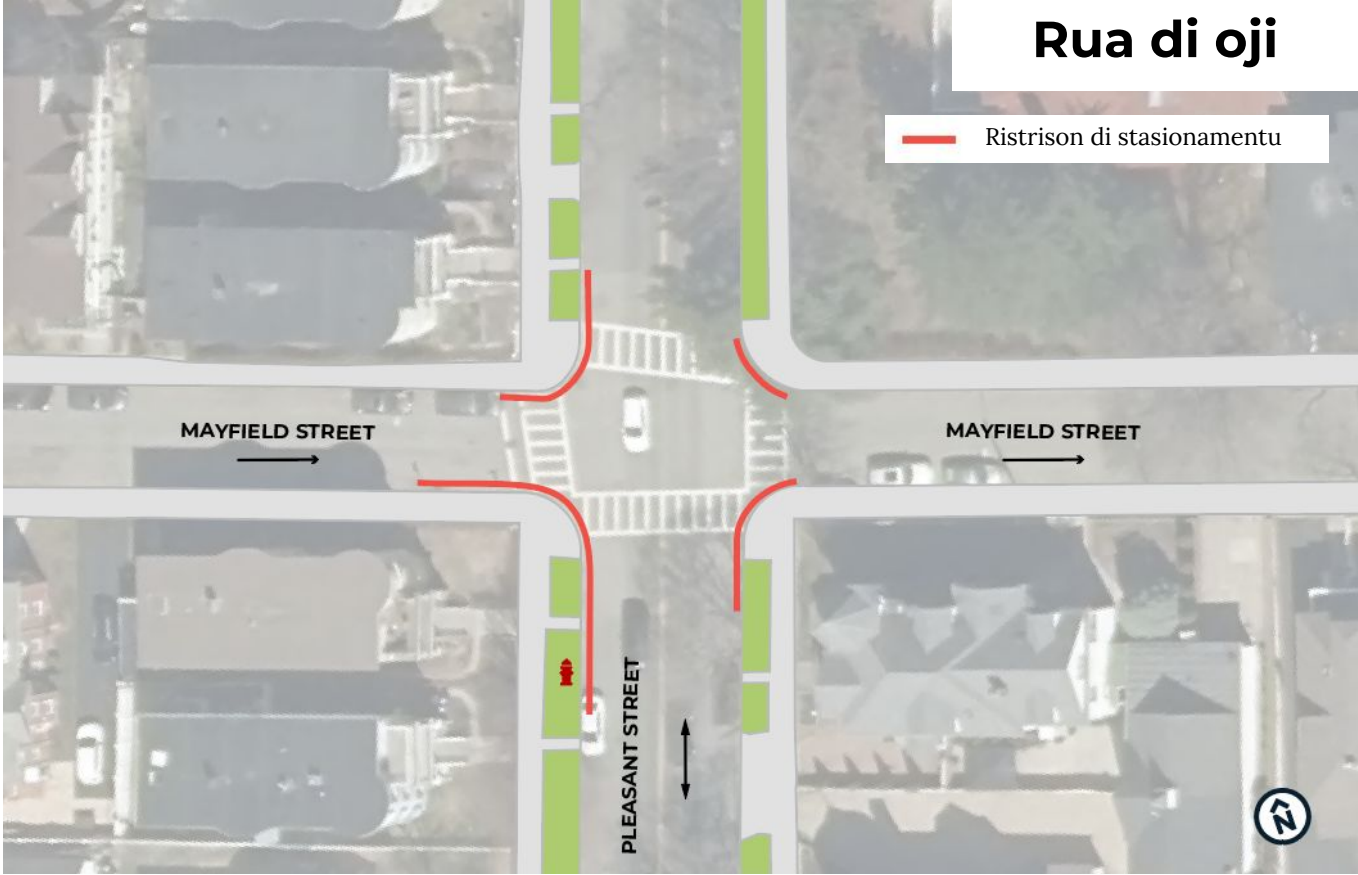
Morrill and Victoria Streets



Morrill and Victoria Streets

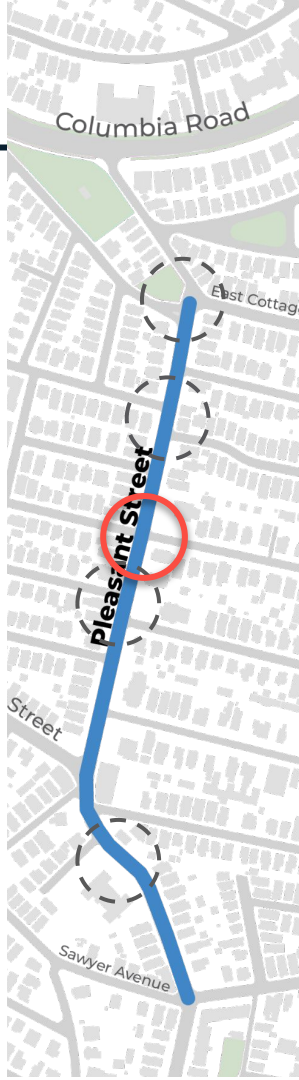
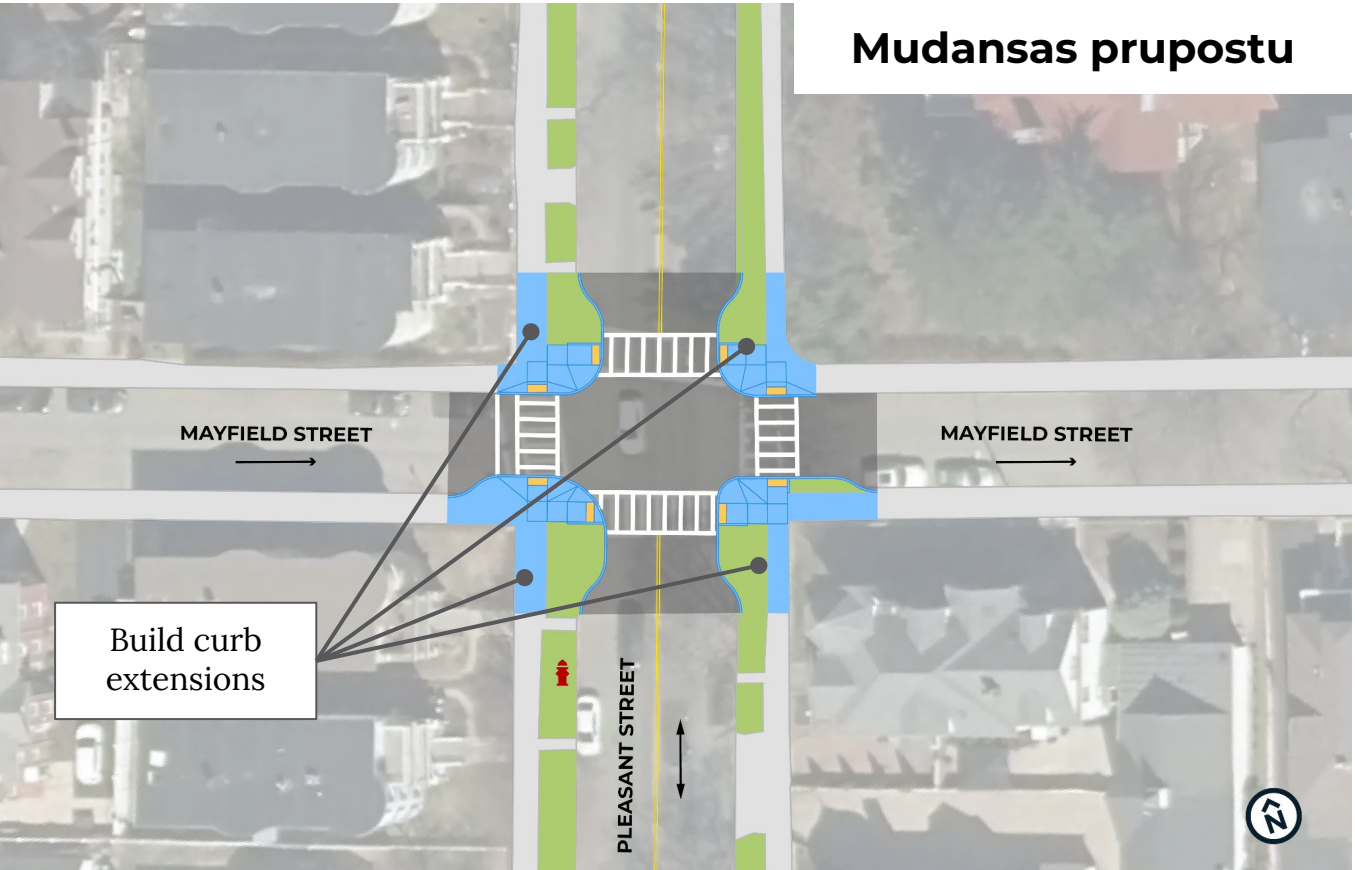


Mayfield Street



Mayfield Street

Mudansas prupostu

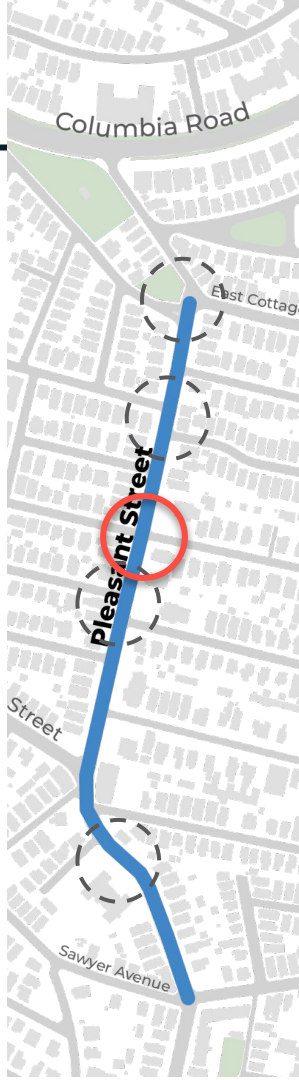
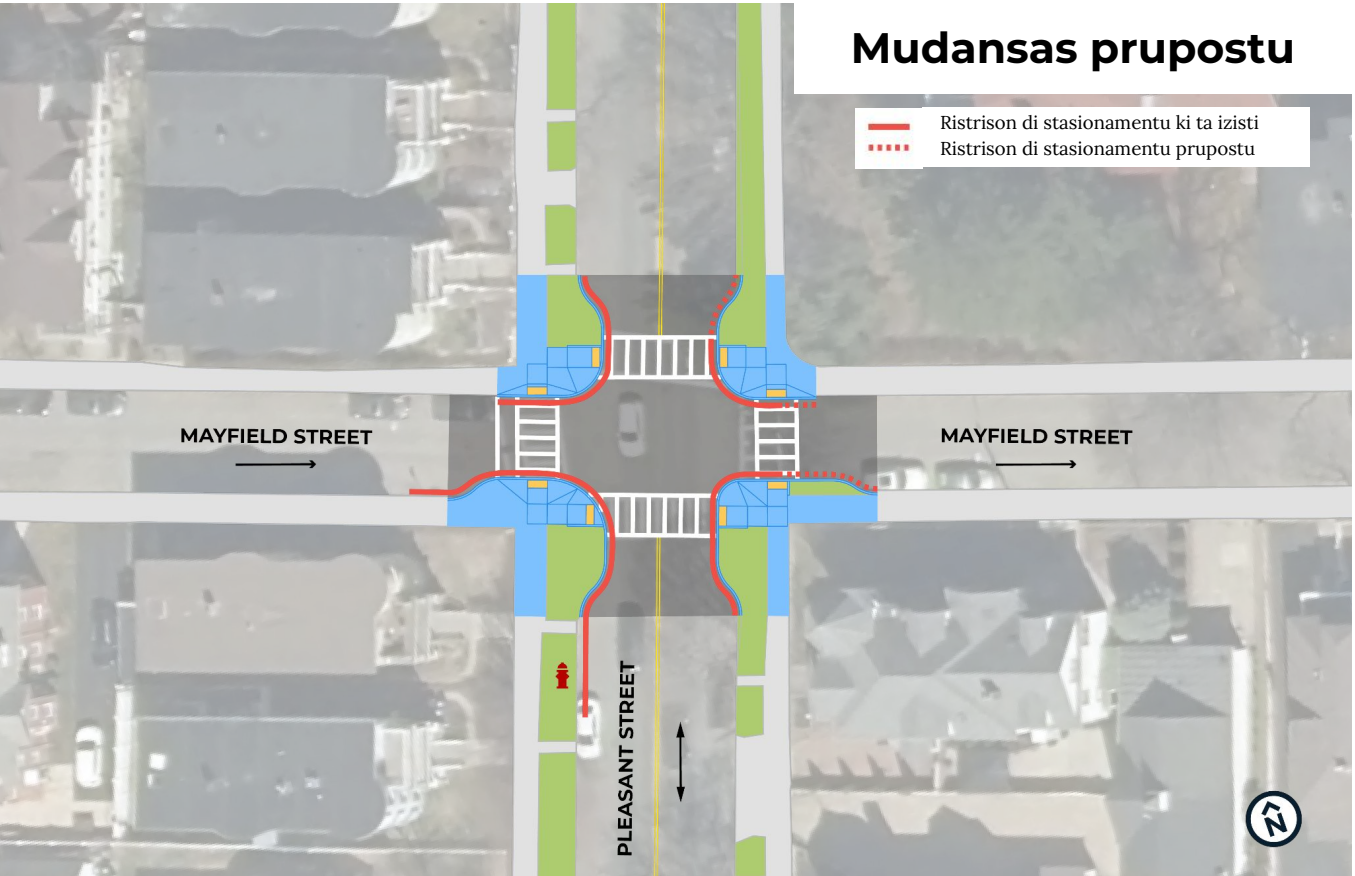


A high-visibility crosswalk on an asphalt road. The crosswalk consists of a series of thick white bars forming a ladder pattern. A yellow tactile paving strip with a raised dot pattern is visible on the sidewalk in the foreground. The background shows a concrete curb and a chain-link fence.

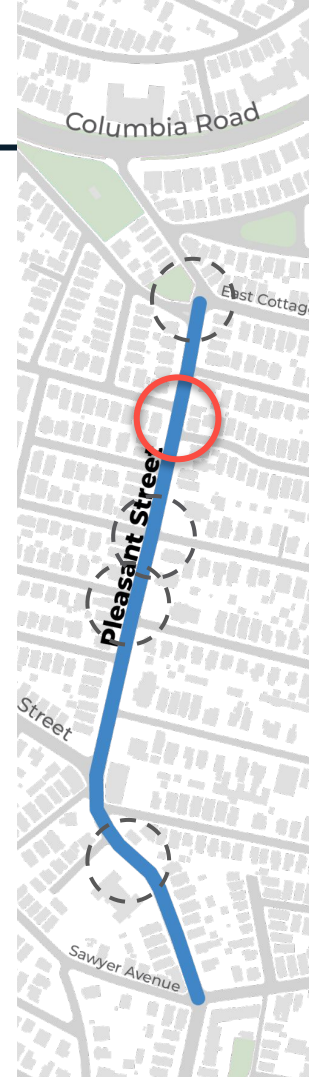
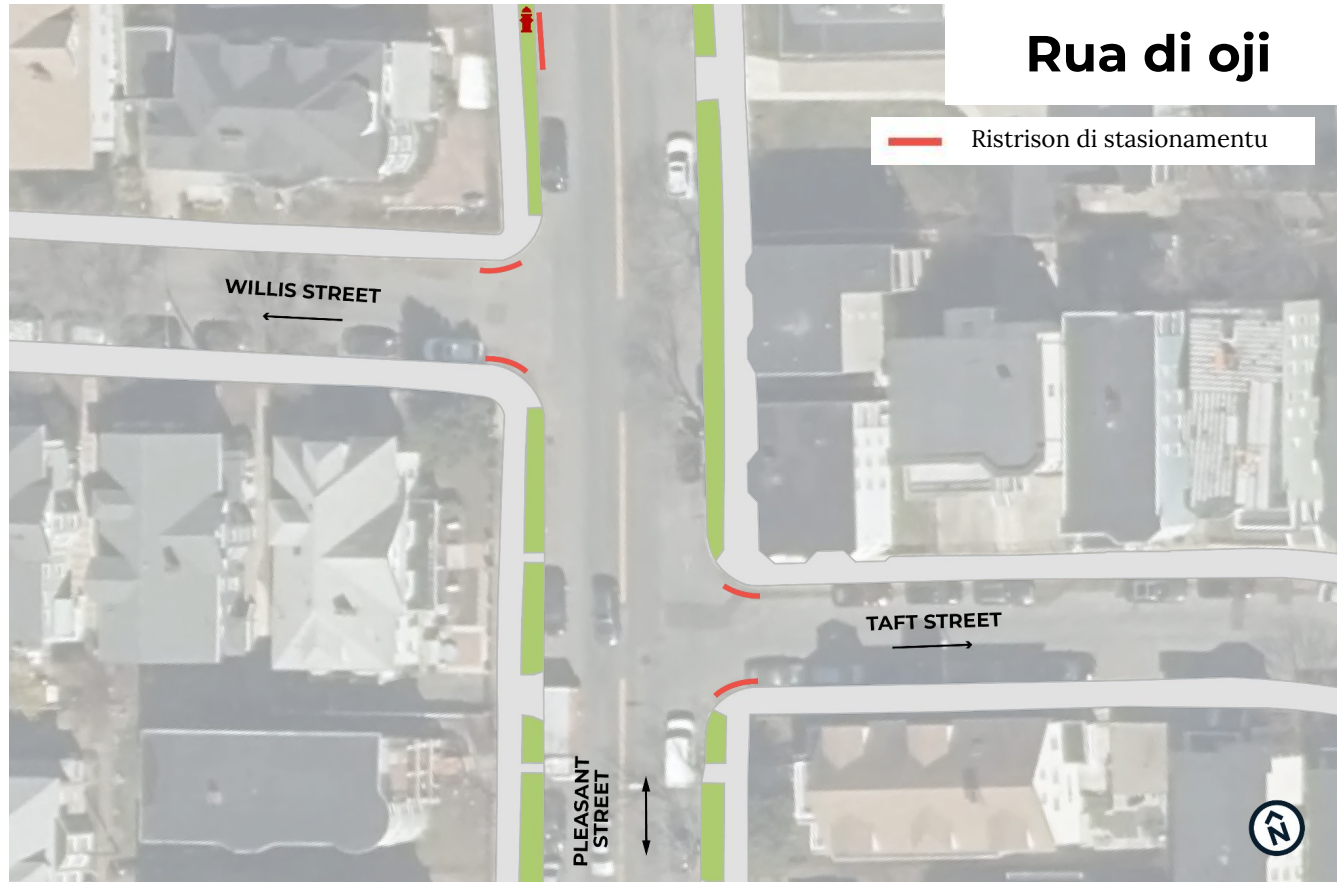
HIGH VISIBILITY CROSSWALK

The most visible type of crosswalk looks like a ladder. This type of crosswalk has a row of thick white bars between two horizontal bars.

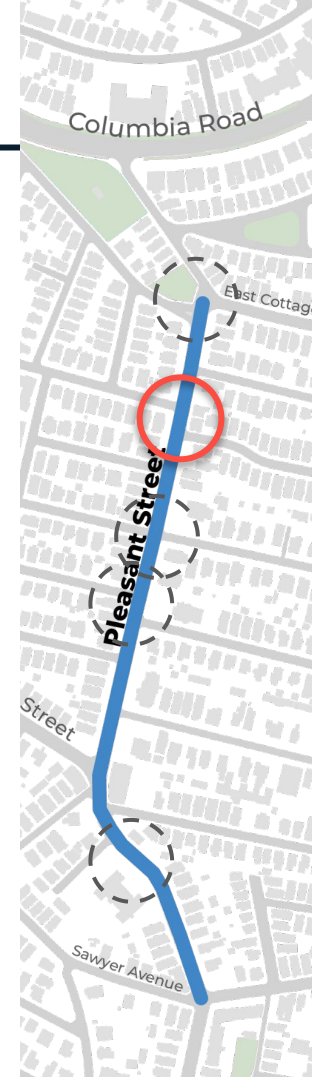
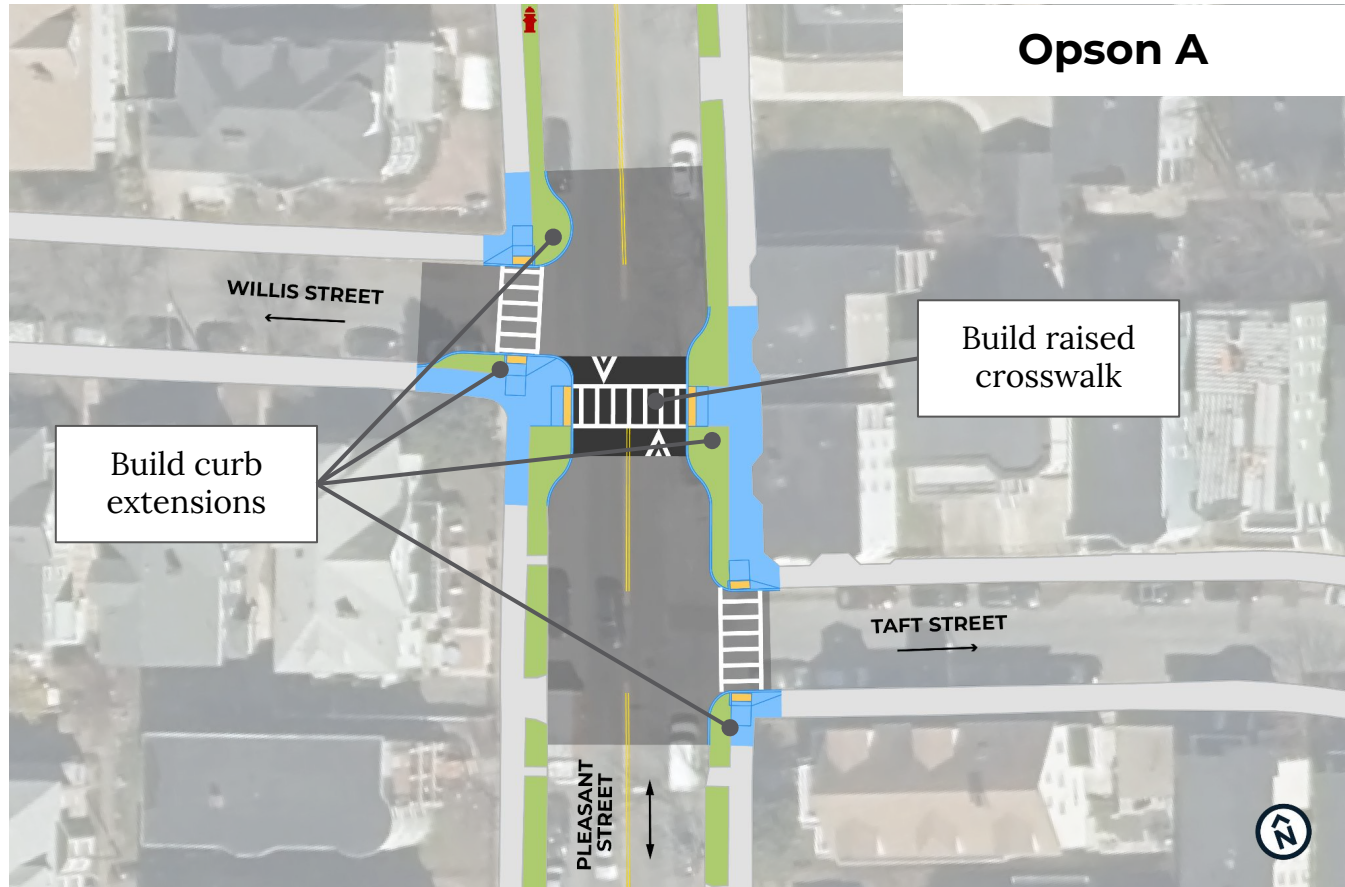
Mayfield Street



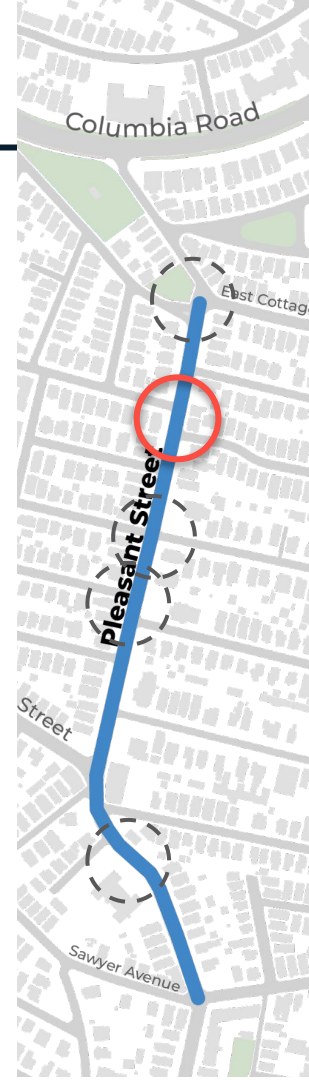
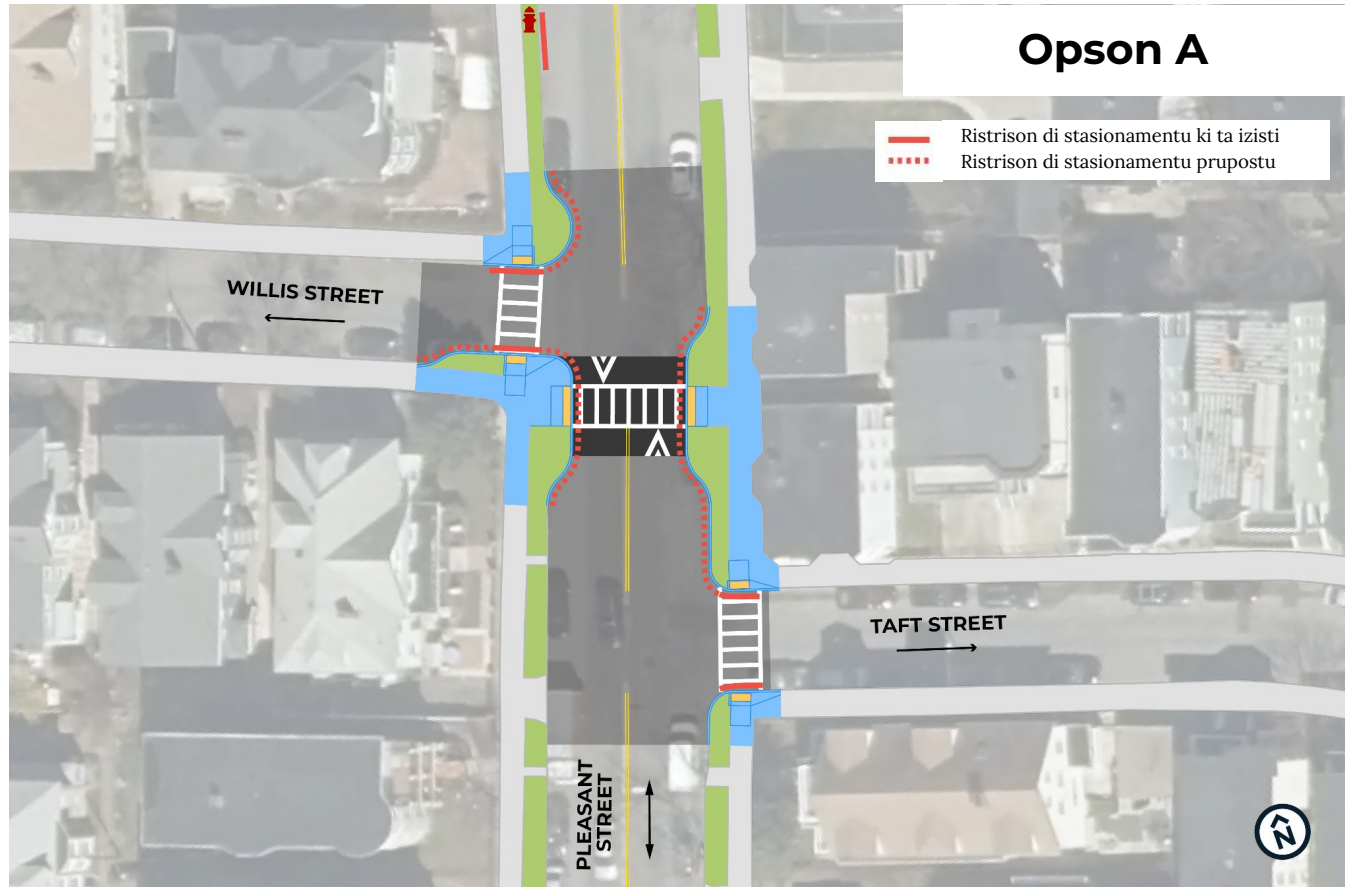
Willis and Taft Streets



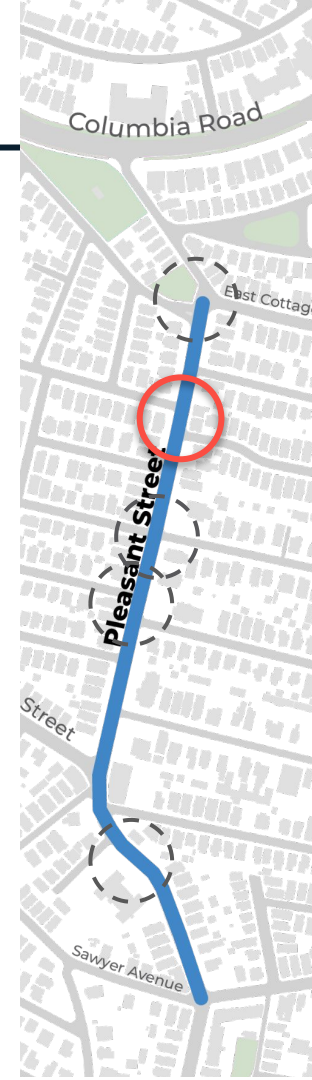
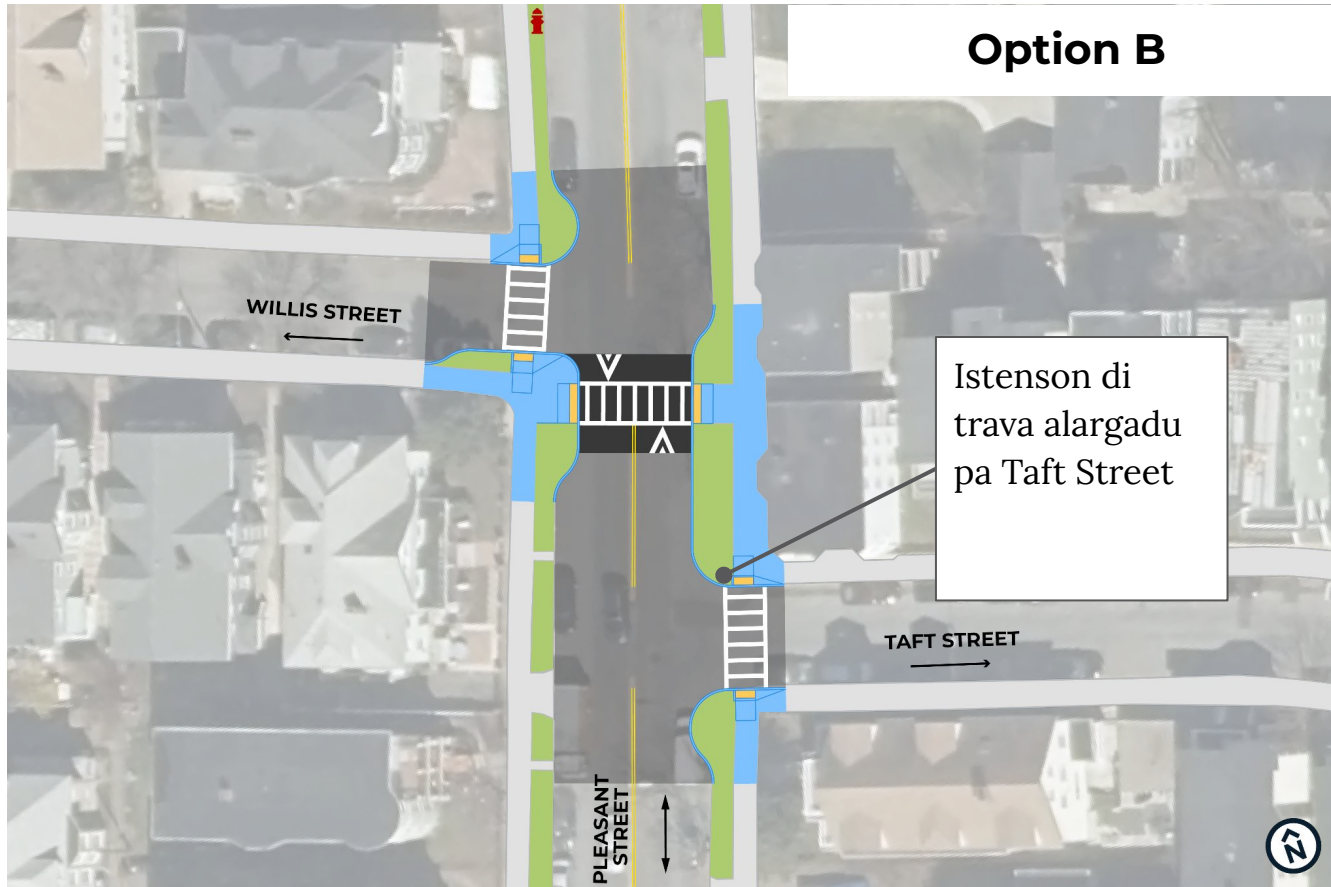
Willis and Taft Streets



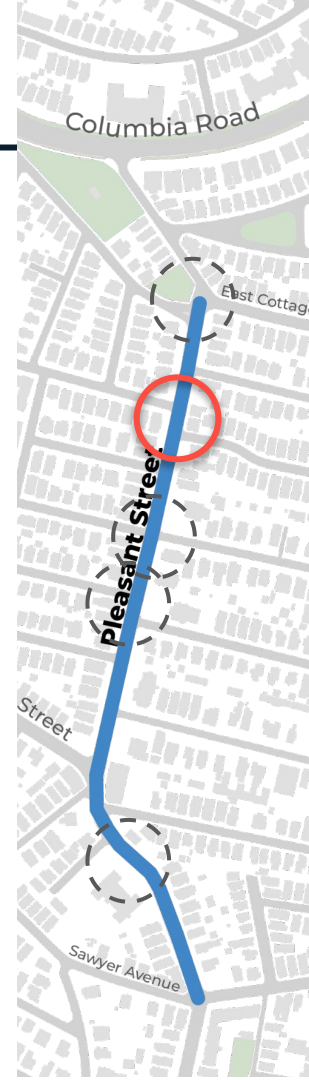
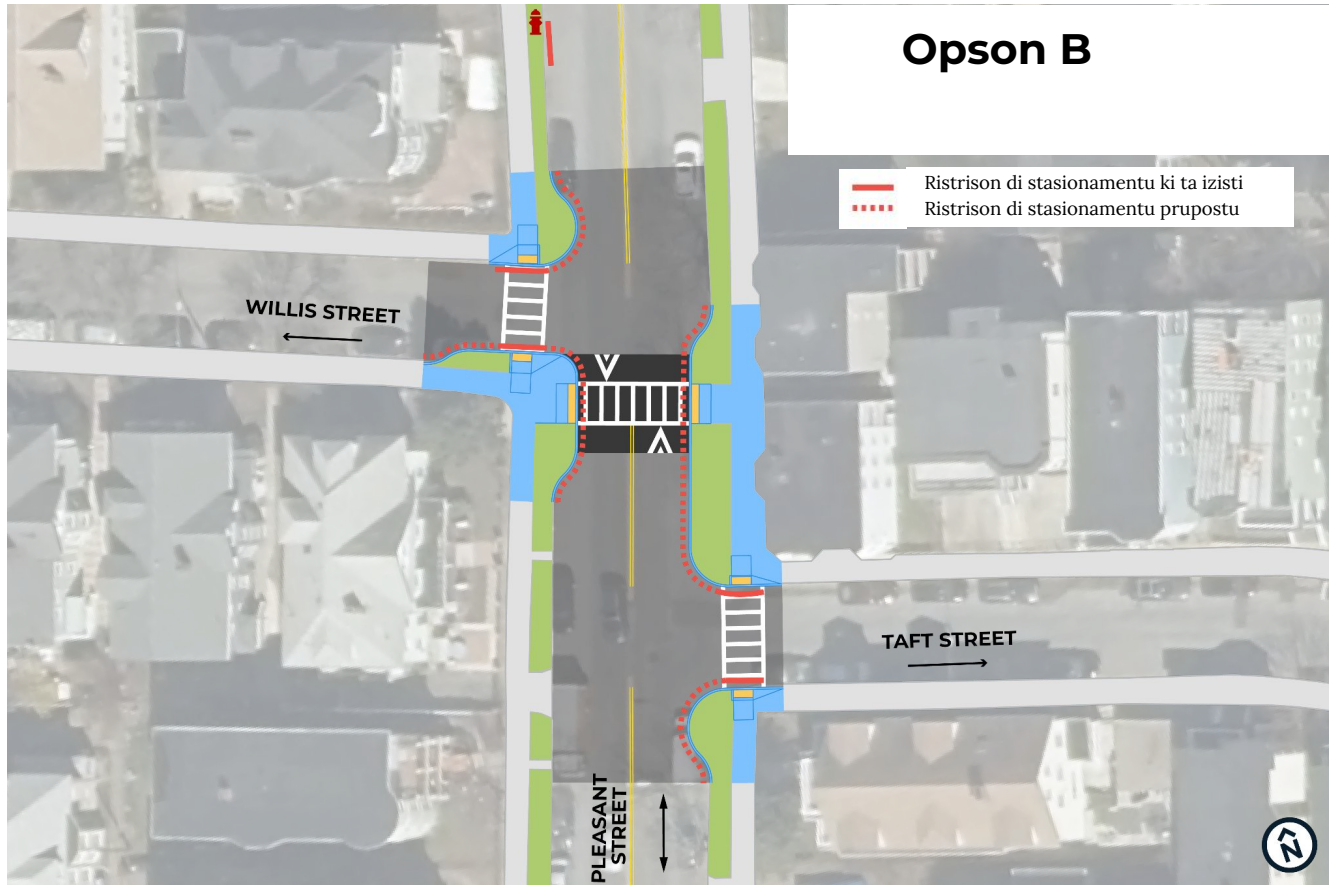
Willis and Taft Streets



Willis and Taft Streets



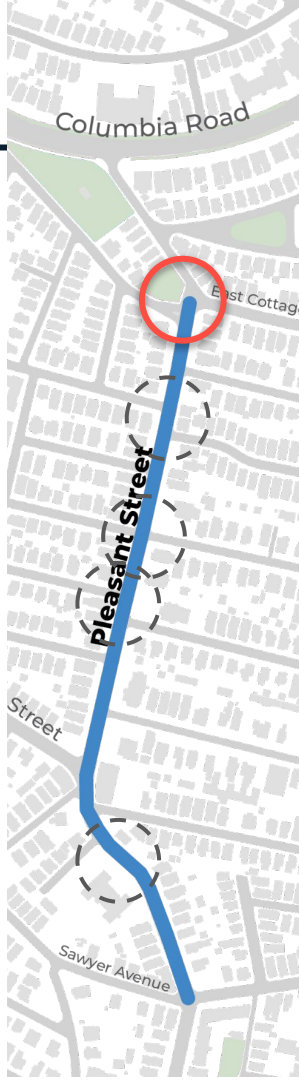
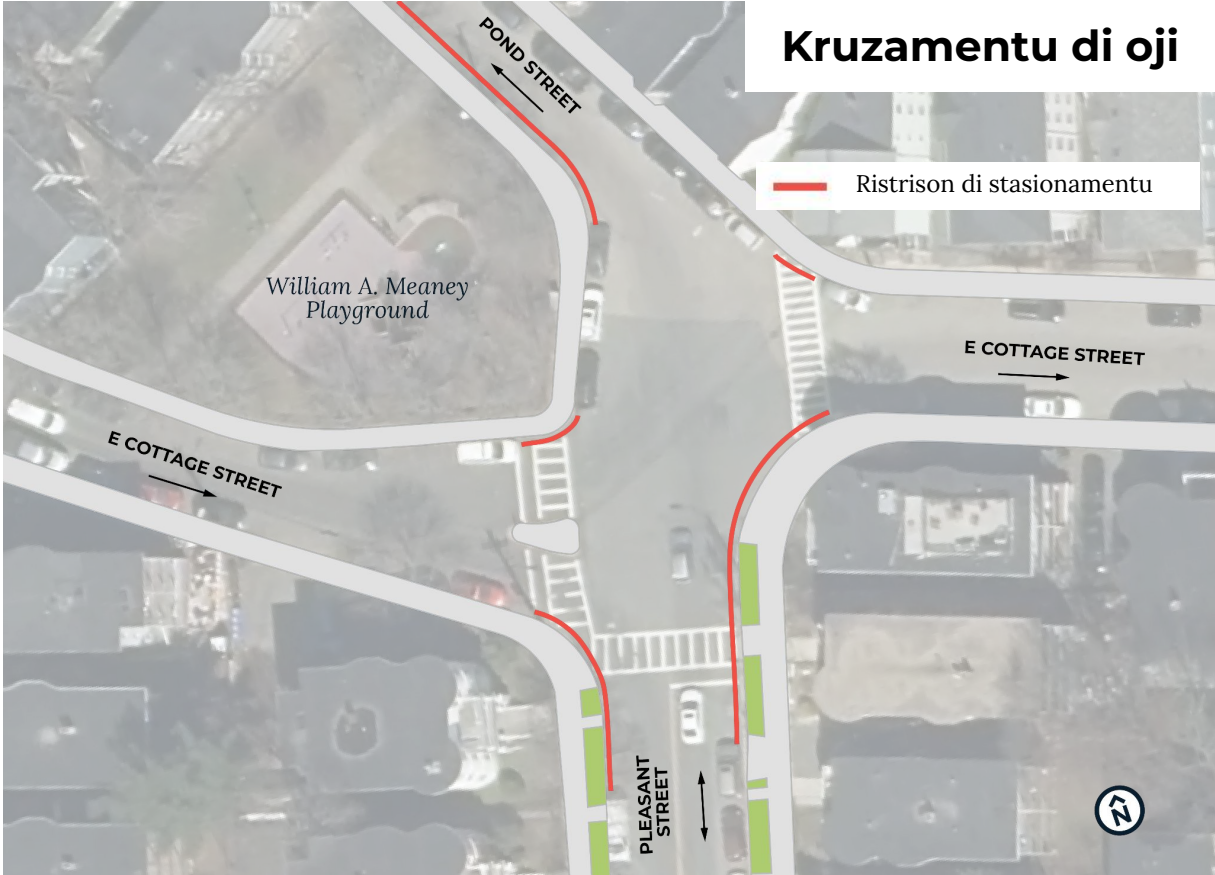
Willis and Taft Streets



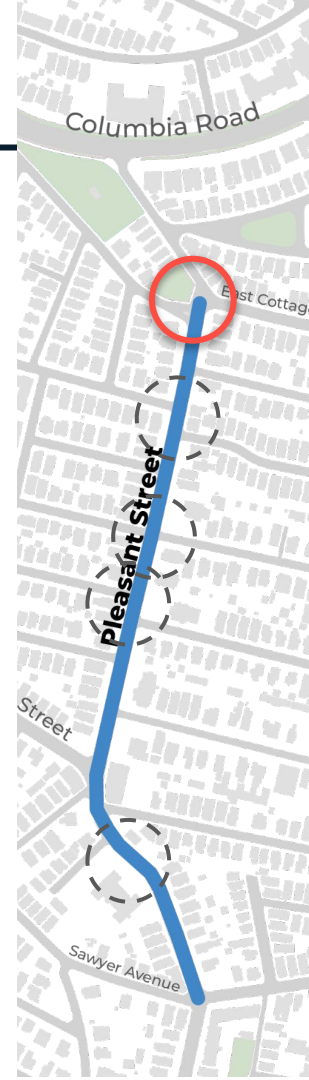
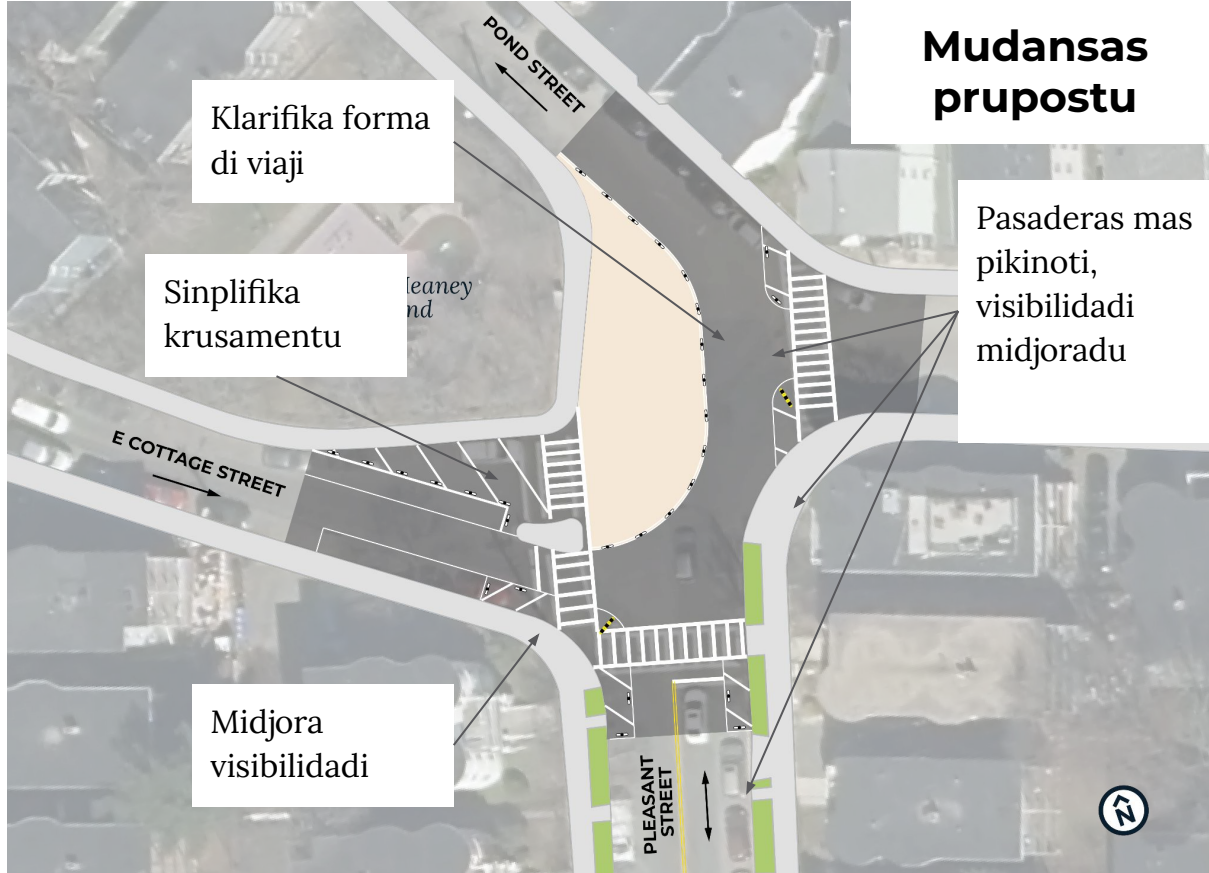
Komparandu opsons

- ▶ Ninhun diferesa na restrison di stasionamentu
- ▶ Opson B ten mas area plantadu
- ▶ Opson B ta fazi ser mas difisil stasiona ilegalmenti

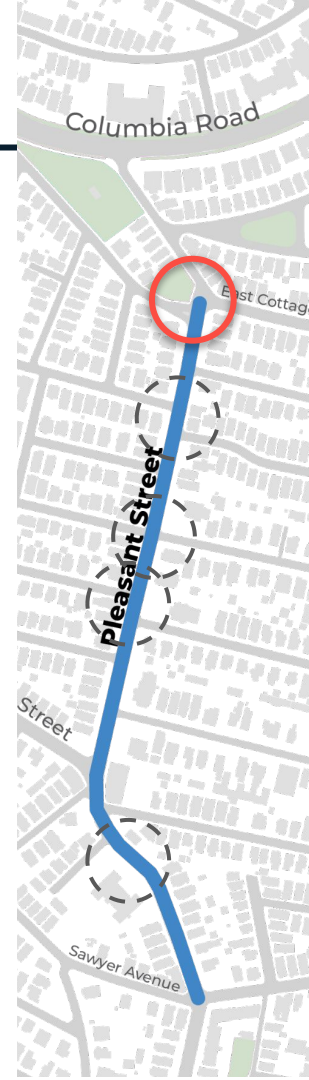
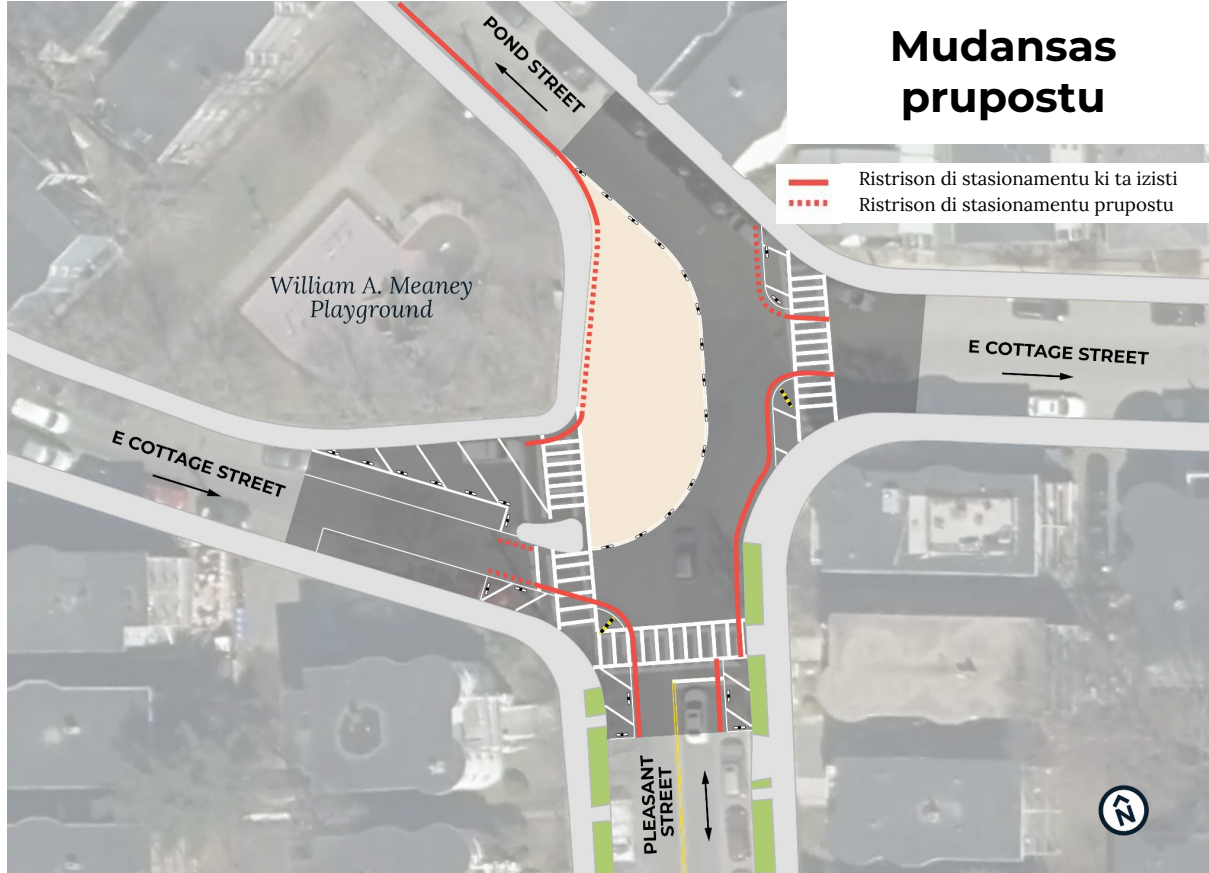
East Cottage at Pond Street



East Cottage and Pond Street

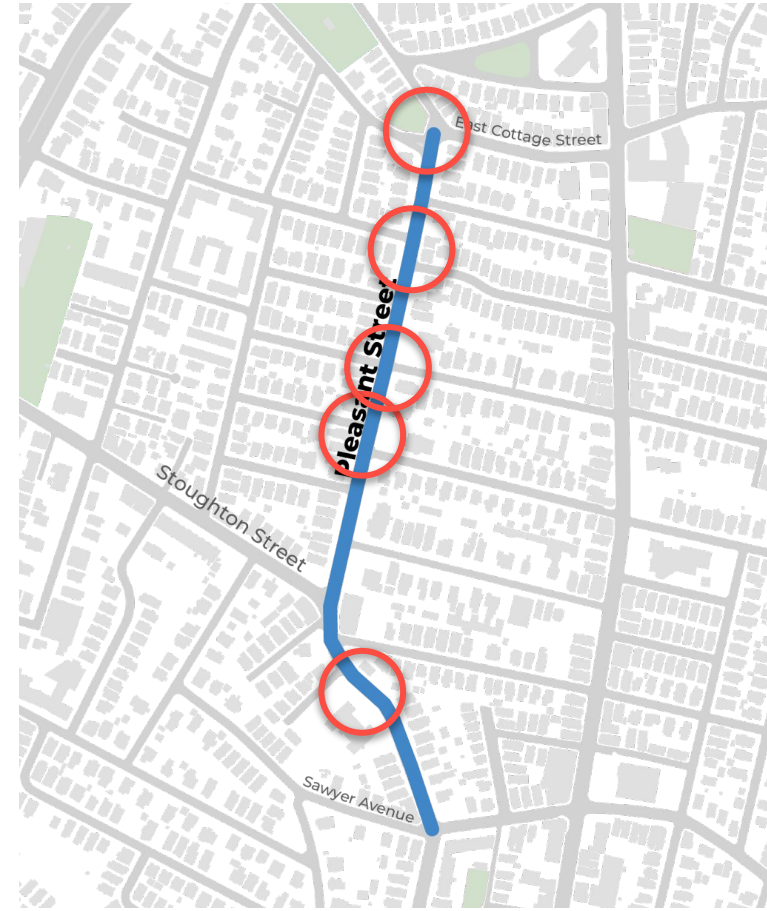


East Cottage and Pond Street



Nu ta gostaba di sabeba:

- ▶ Kuze ki bu gosta
- ▶ Kuze ki bu ta sugeria pa nu konsidera/re-konsidera
- ▶ Perguntas ki bu ten



Prosimus pasu pa “Pleasant Street”



Nos proximis pasu

- ▶ Primavera di 2022
 - Fazi ajusti basiadu na nhos riason
- ▶ Veron ti Otonu di 2022
 - Kulabora ku otu dipartamentus y agencias na dezenhu
 - Kompartilha atualizason ku nhos

Nu kre obi nhos!

Kompartilha bus ideias ti 13 di Maiu di 2022.

Visita website di prujetu: boston.gov/pleasant-street

- Poi bu nómi pa lista di kurespondensia
- Odja tudu informason y presentason di prujetu

Email bus stórias y speriencias pa pleasant.street@boston.gov

Midjora visibilidadi di pasadera

Nearby projects

- ▶ Mass Ave Better Bike Project
 - boston.gov/mass-ave-south
- ▶ Hancock Street Triangle Neighborhood Slow Streets
 - boston.gov/slow-streets/hancock
- ▶ PLAN Glover's Corner
 - bostonplans.org/planning/planning-initiatives/plan-dorchester-glovers-corner
- ▶ Dot Block Development
 - bostonplans.org/projects/development-projects/dot-block

Other Concerns

Report to 311:

- ▶ Street lighting repairs or requests
- ▶ Drag racing
- ▶ Sidewalk repairs
- ▶ Trash or street-sweeping issues

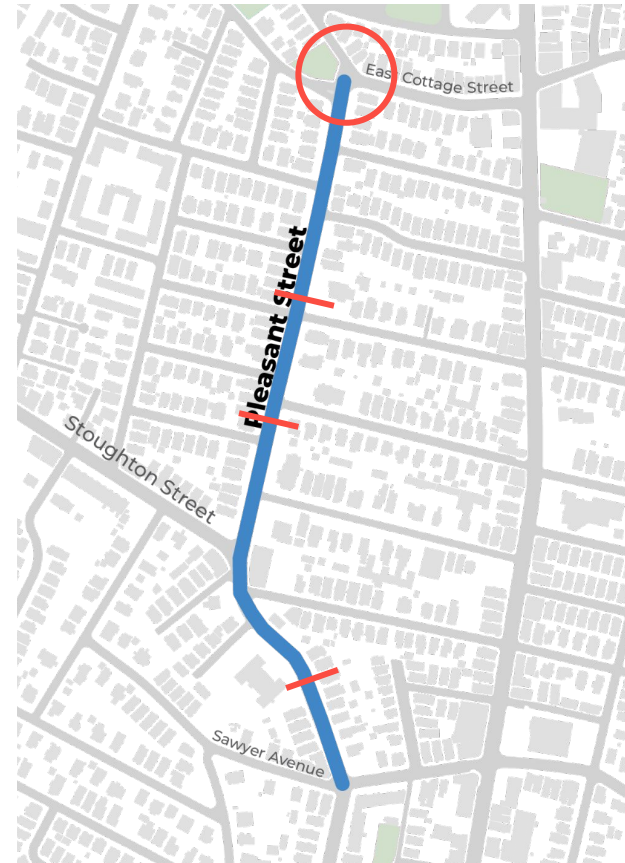
Extra Slides

Traffic speeds on Pleasant Street

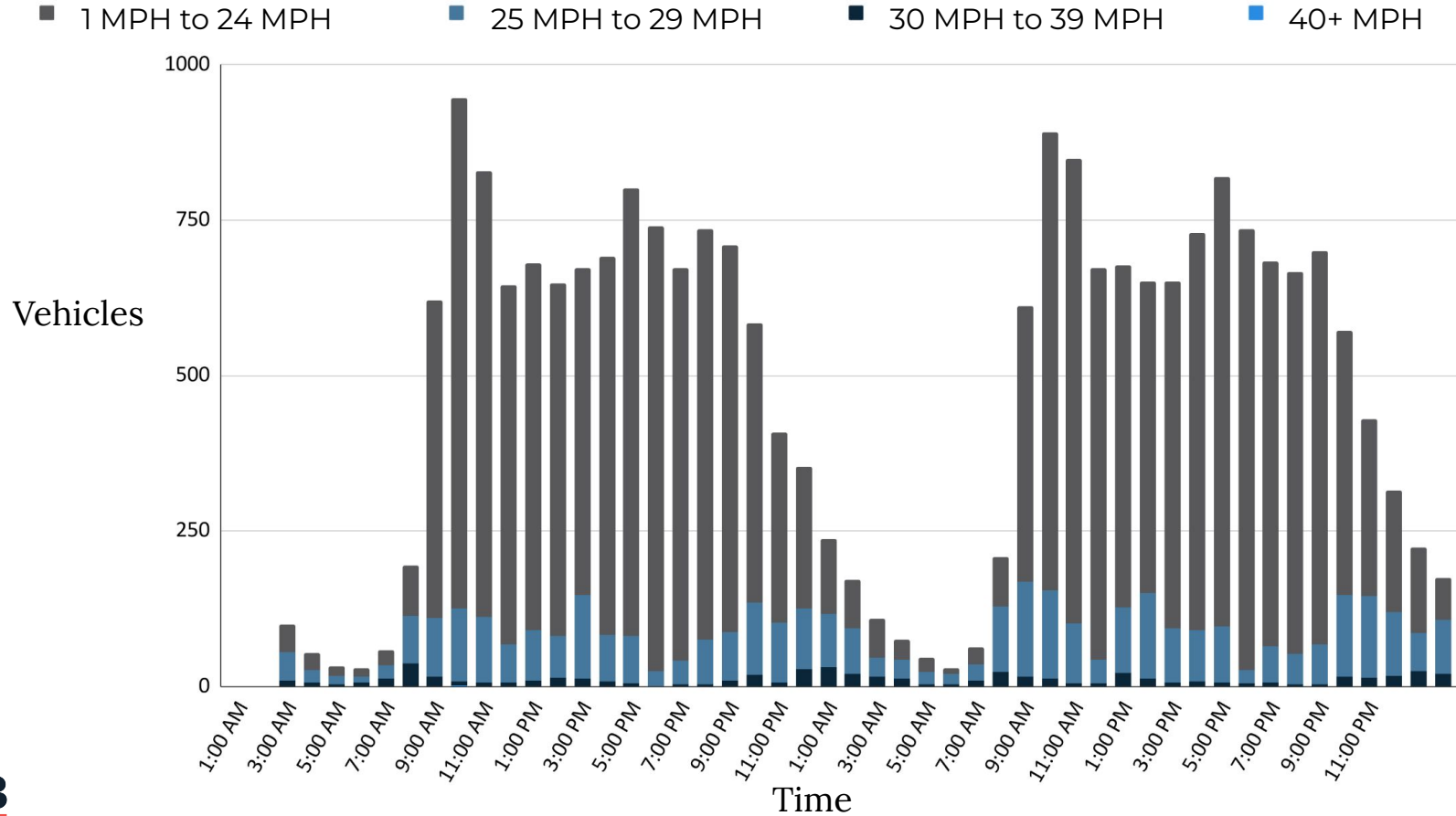
Collected in October 2021

We collected data in October 2021

- ▶ We collected the number of vehicles and their speeds at three locations
- ▶ We counted how people walking, biking, and driving used the intersection at East Cottage Street

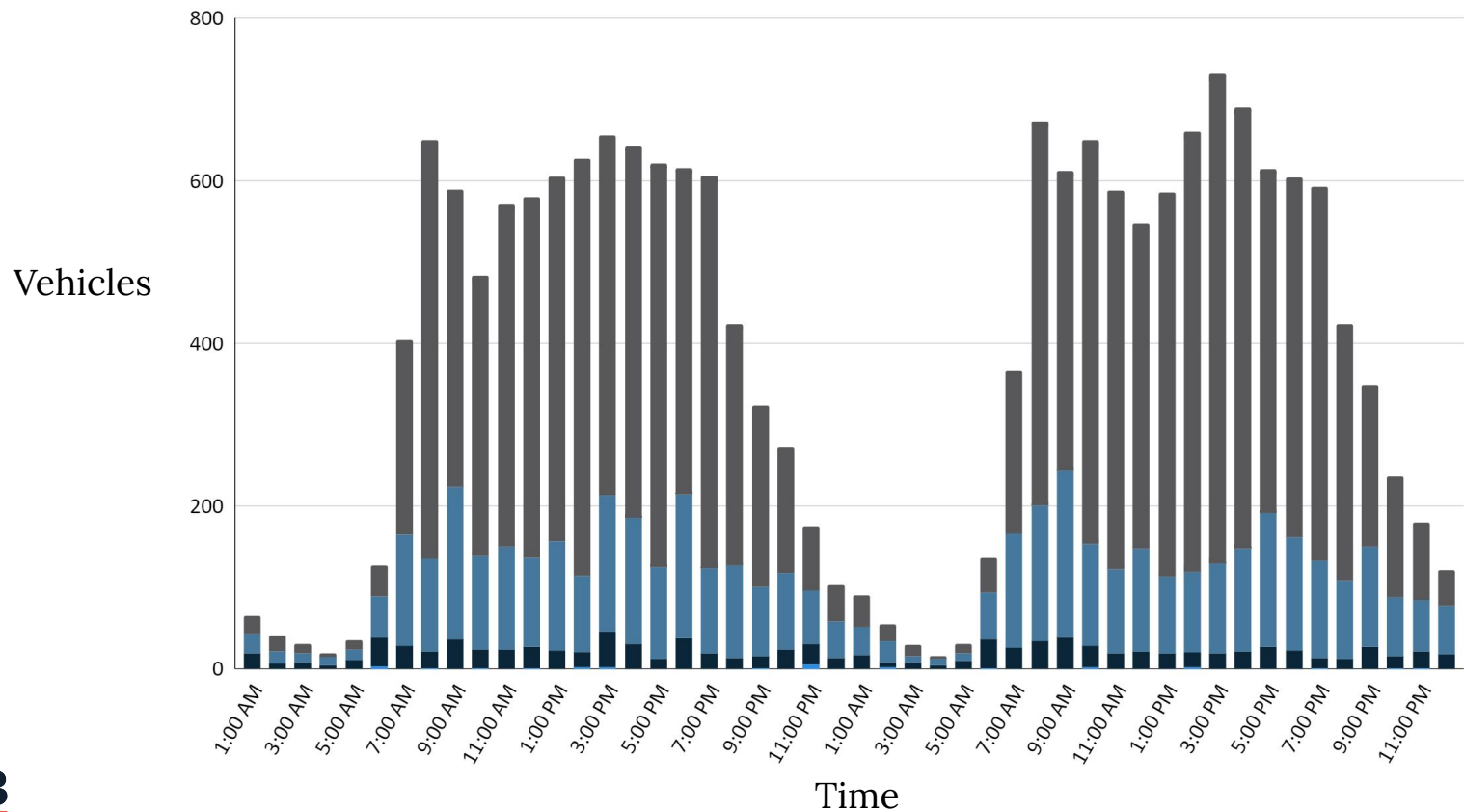


Speeds near Edward Everett School



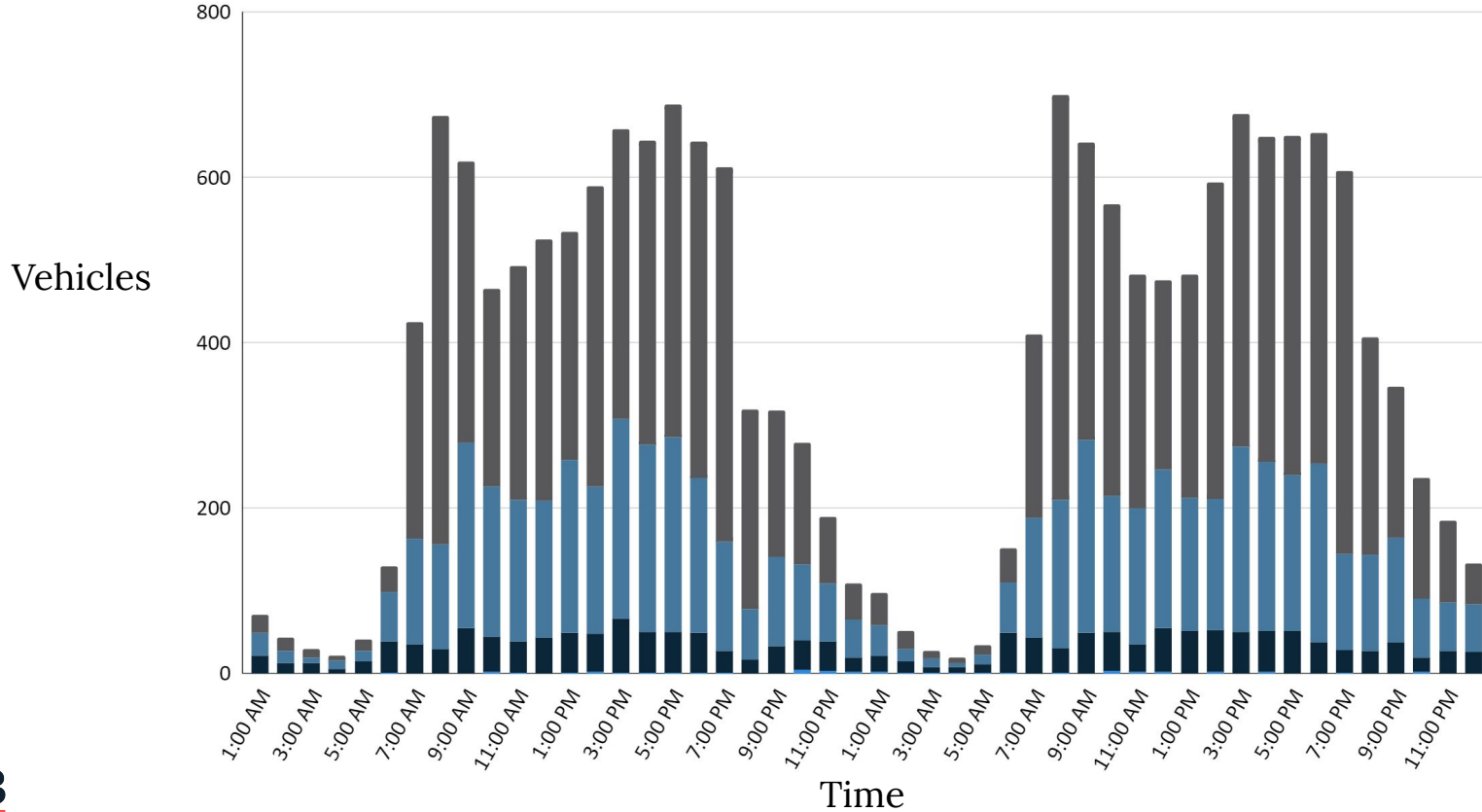
Speeds near Trescott Street

■ 1 MPH to 24 MPH ■ 25 MPH to 29 MPH ■ 30 MPH to 39 MPH ■ 40+ MPH

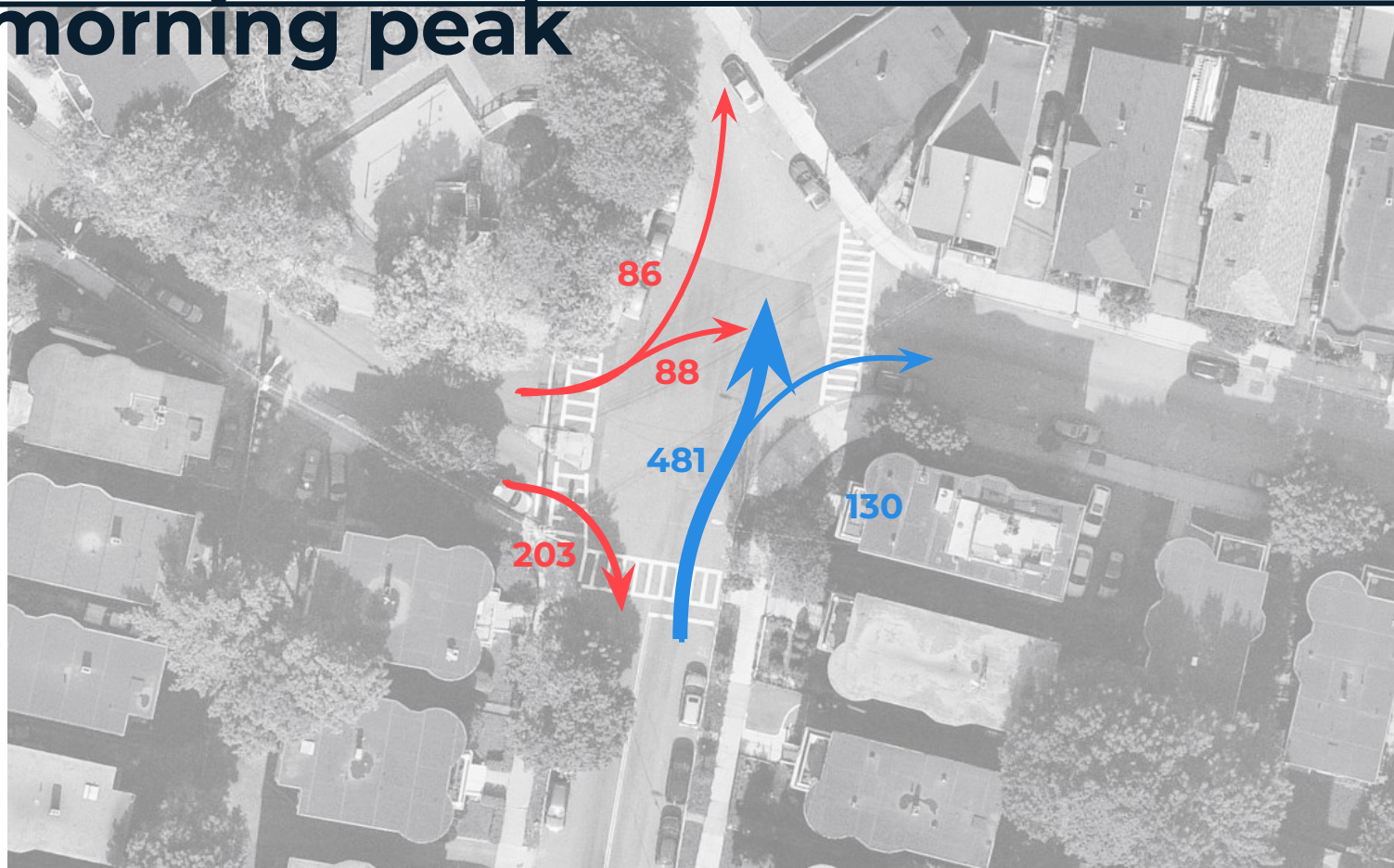


Speeds near Hinkley Street

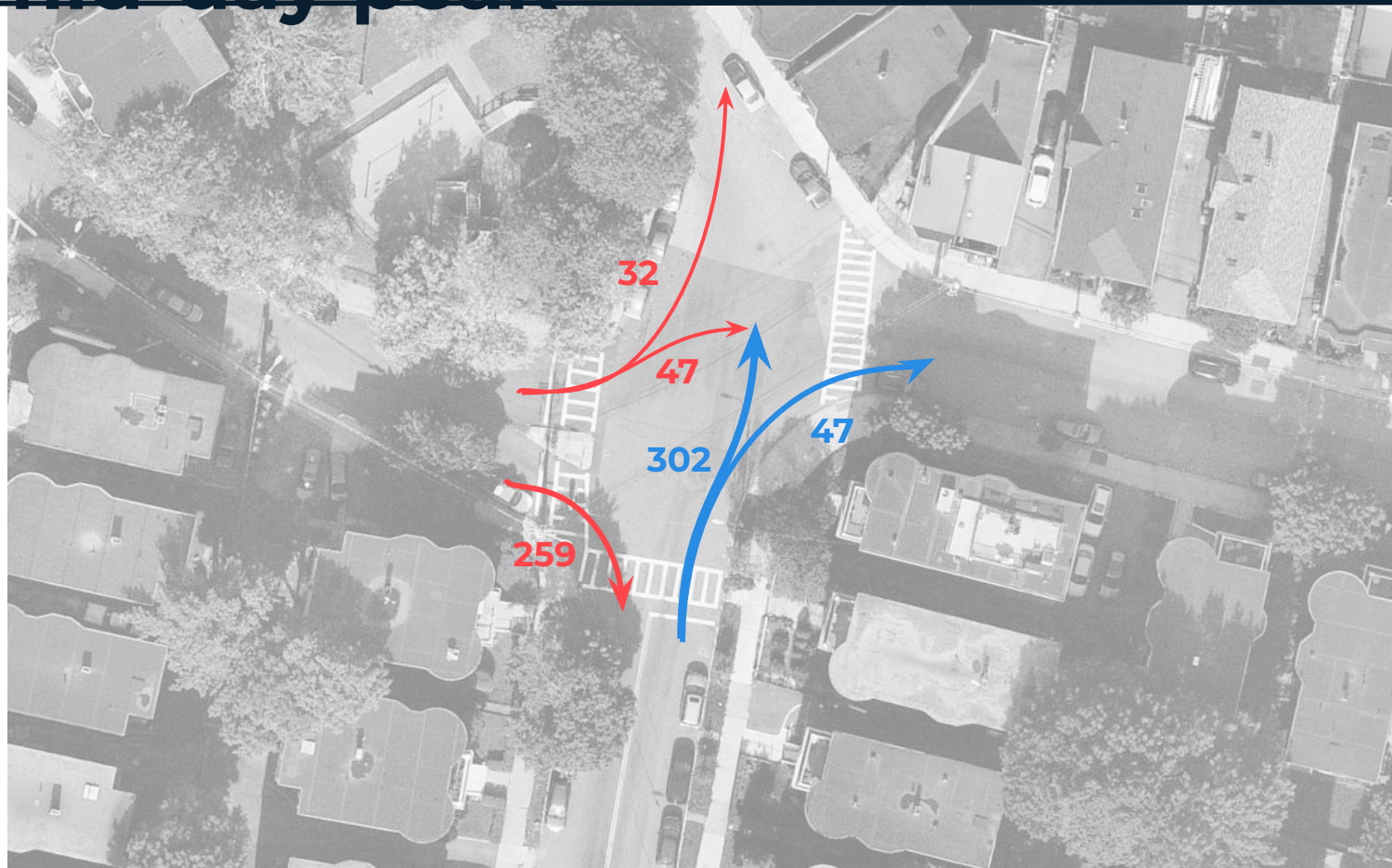
■ 1 MPH to 24 MPH ■ 25 MPH to 29 MPH ■ 30 MPH to 39 MPH ■ 40+ MPH



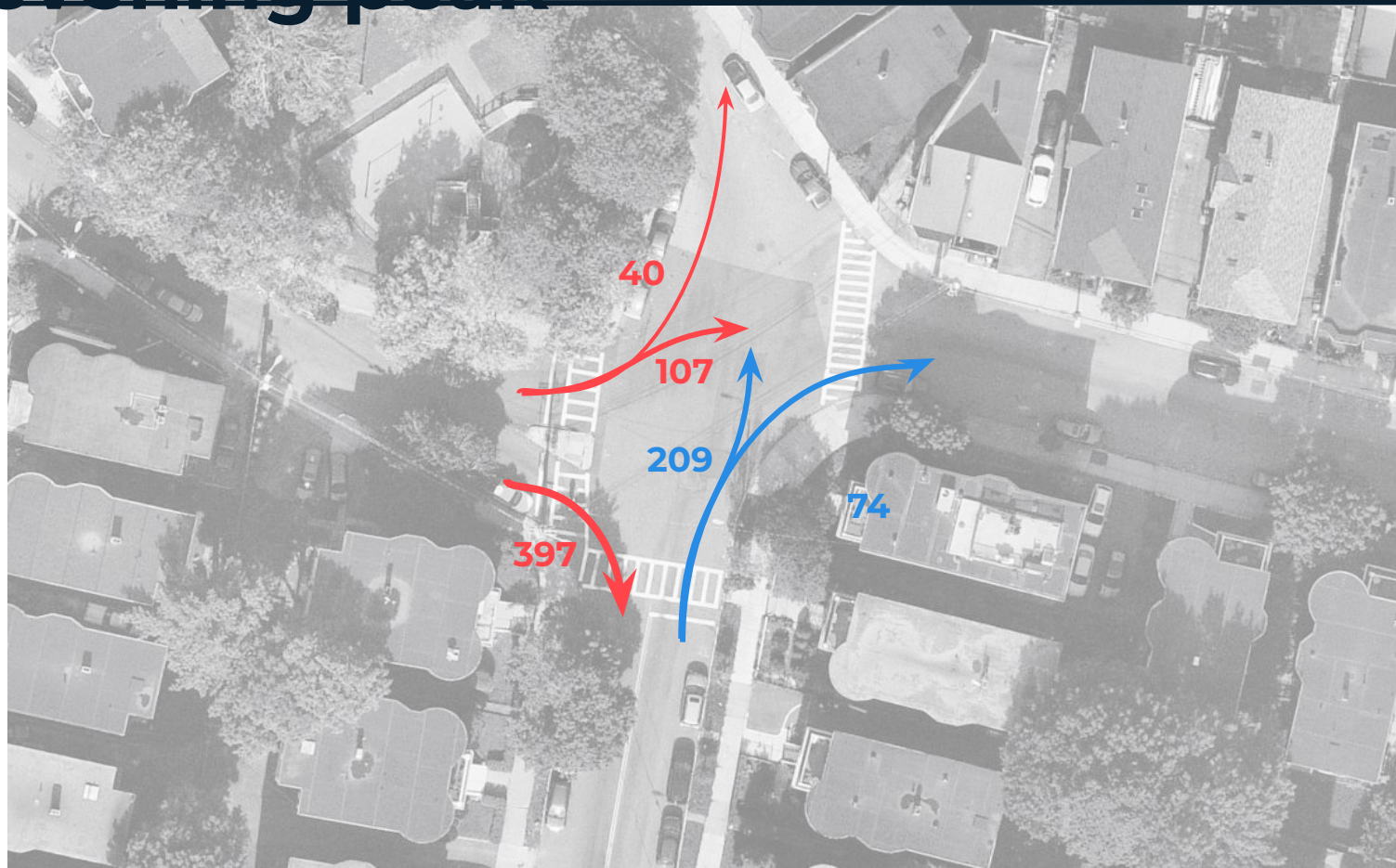
Driving patterns at East Cottage during the morning peak



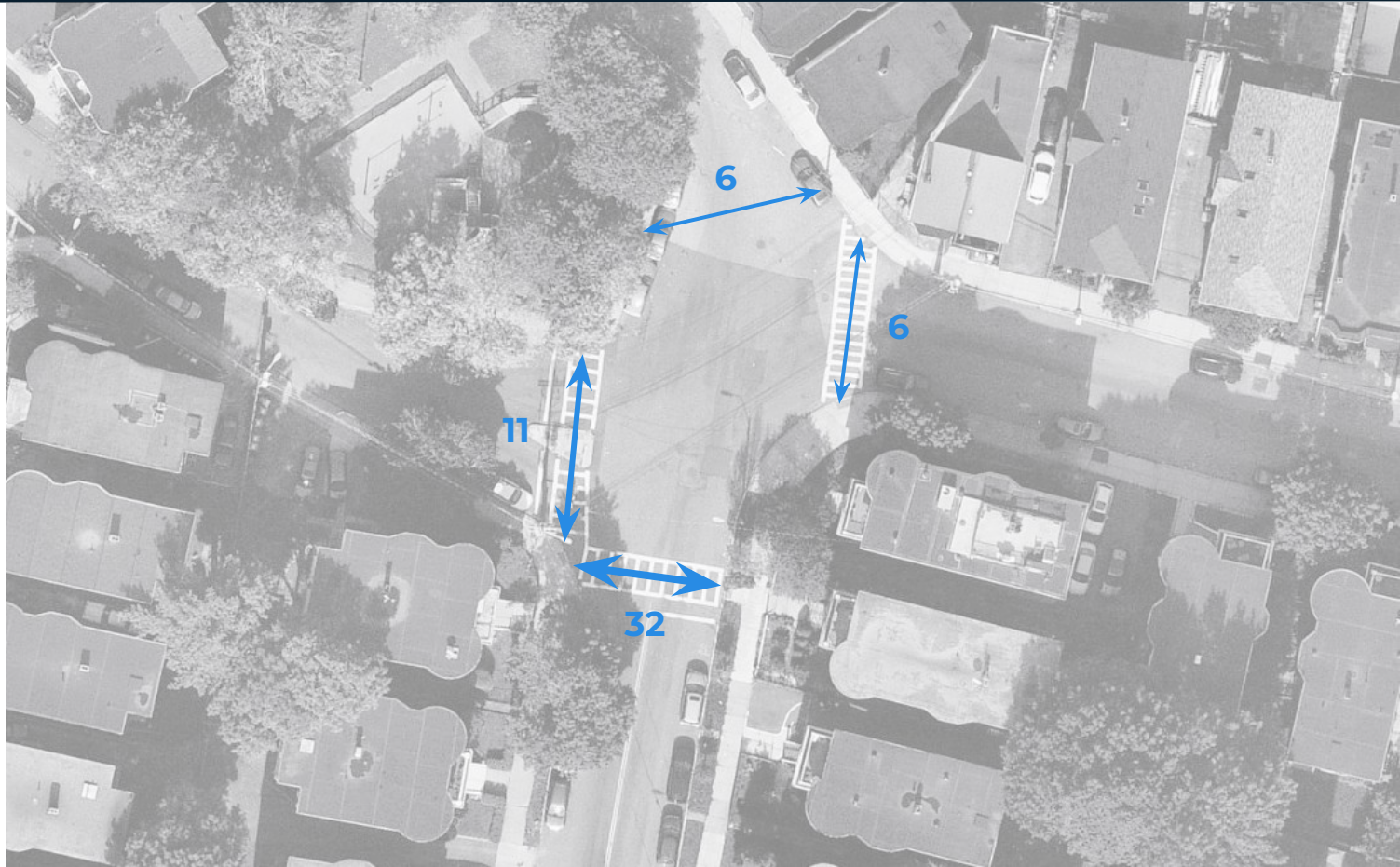
Driving patterns at East Cottage during the mid-day peak



Driving patterns at East Cottage during the evening peak



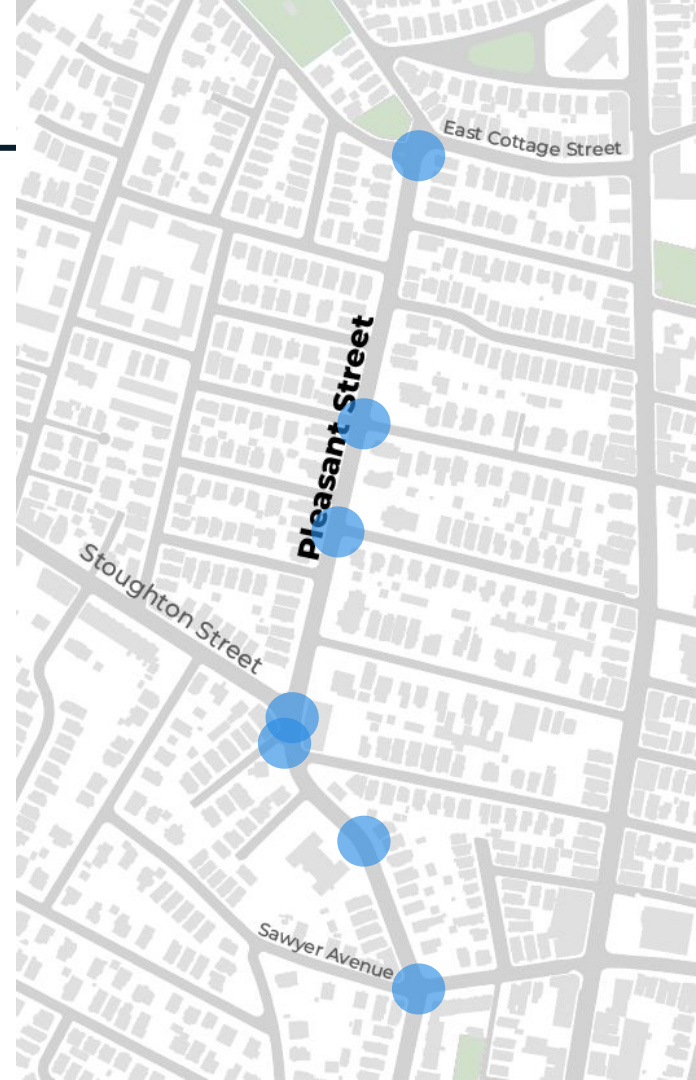
How people crossed the street (all day)



Safety concerns on Pleasant Street

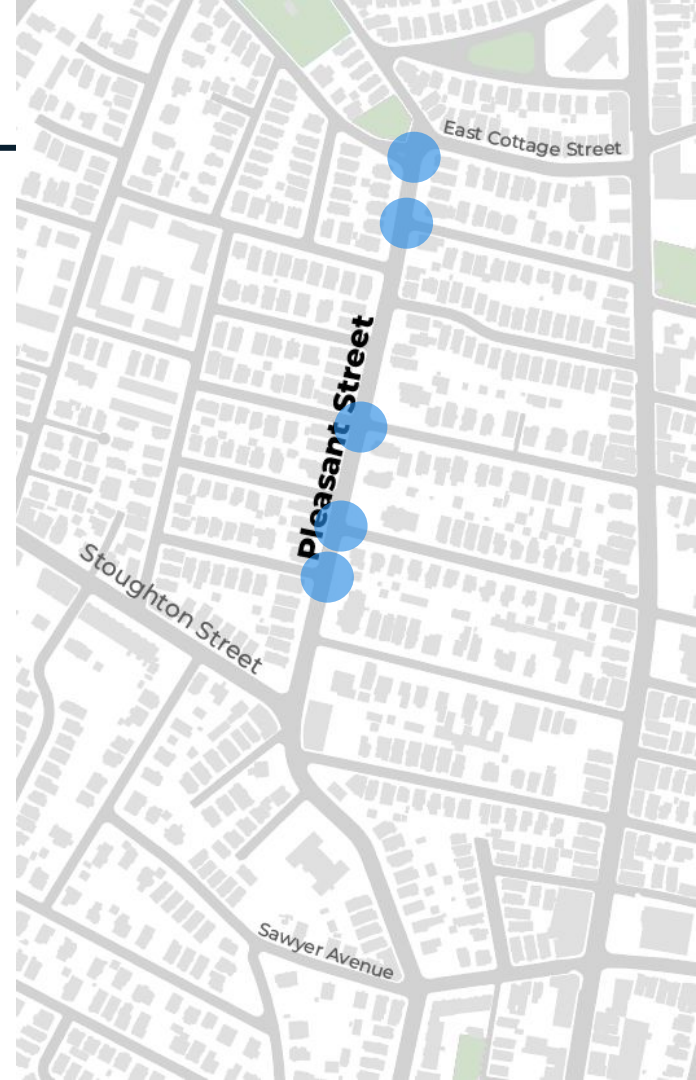
Crossings don't feel safe

- ▶ Drivers do not stop or yield at crosswalks, even for crossing guards.
- ▶ There is no curb ramp across from Victoria Street.



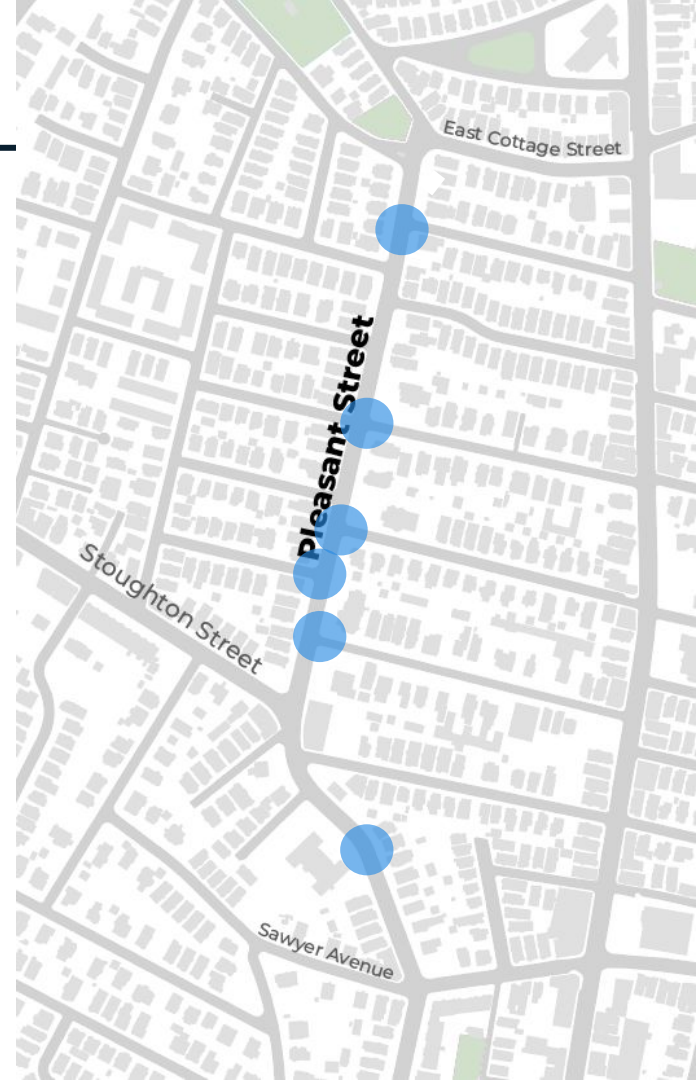
Drivers make fast turns

- ▶ Drivers make dangerously fast turns off side streets looking for gaps in traffic.
- ▶ Drivers do not fully stop for the stop sign at East Cottage Street. They sometimes speed through the intersection.



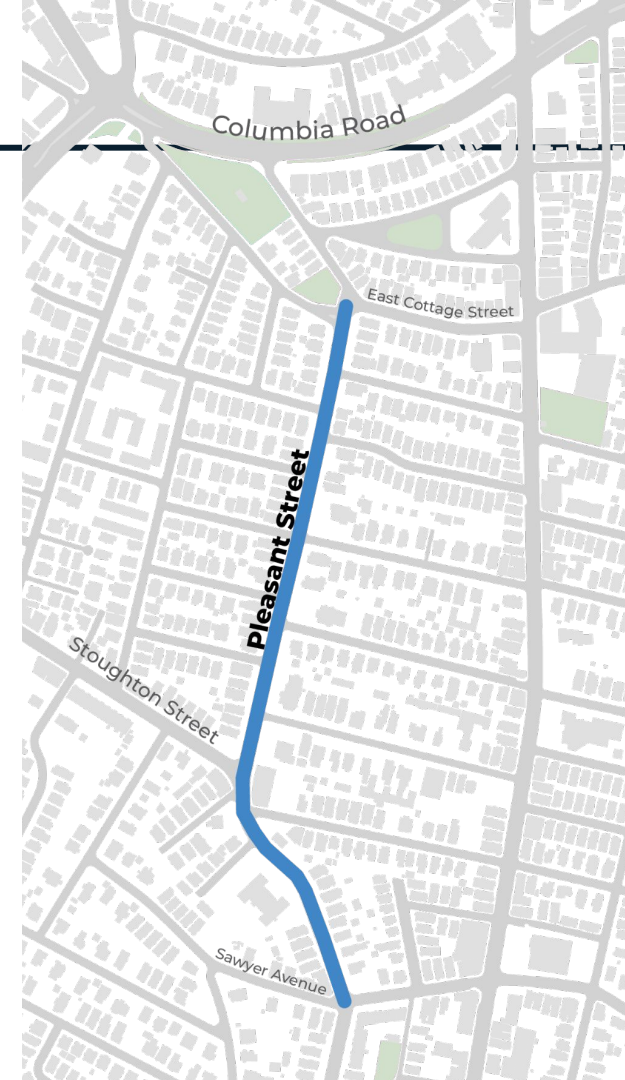
Poor visibility

- ▶ Drivers park too close to the crosswalks and intersections, leading to poor visibility for drivers turning off side streets.
- ▶ The curvature of the street between Stoughton Street and the Edward Everett School makes for poor visibility at the crosswalk.
- ▶ Drivers do not notice signs for the school.



Overall issues

- ▶ Drivers speed on Pleasant Street.
- ▶ Drivers pressure cyclists to go faster, which can lead cyclists to pull aside and weave back into traffic, a sometimes-risky maneuver.
- ▶ Drivers use the street as a cut-through to avoid stop lights on Columbia Road and Dorchester Avenue. These include drivers of large trucks, duck-boats, and buses.



CROSSING ISLANDS

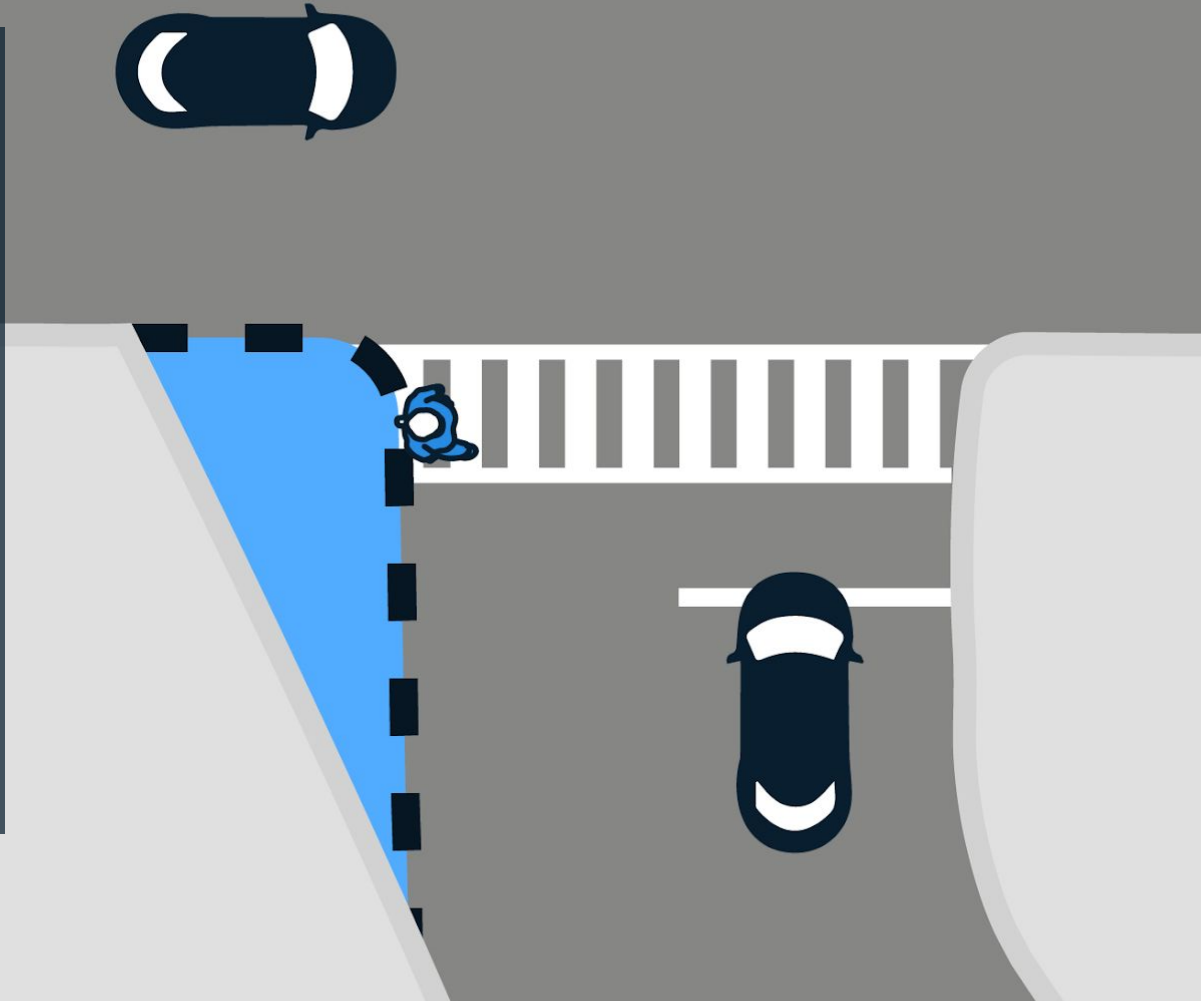
Crossing islands provide a place for people to pause when crossing multiple lanes.



“T”

INTERSECTIONS

We redesign irregularly-shaped intersections by extending the curb to create intersections with right-angles. This improves visibility at intersections and reduces conflicts.



CLEAR CORNERS

Drivers parked 20 feet within an intersection can block sight lines of other users on the street.



CLEAR CORNERS

We restrict parking with paint and flex posts to improve visibility of other people on the street, including small children.

