

# BLUE HILL AVE TRANSPORTATION ACTION PLAN: Mattapan Square Intersection Design

February 15, 2022



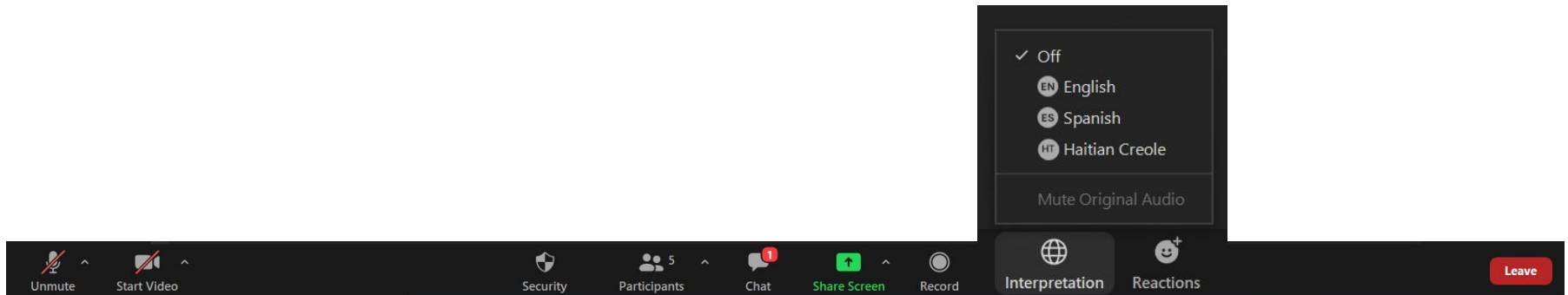
Public Works



Transportation

# Welcome! ¡Bienvenidos! Akeyi!

- Si hablas español y prefieres escuchar la reunión en esta lengua utiliza el botón de “Interpretation” (Interpretación) para acceder al canal de audio en español.
- *Si w pale Kreyòl Ayisyen e w prefere tande reyinyon an nan lang sa a tanpri sèvi ak bouton "Interpretation" (Entèpretation) pou w jwenn aksè ak chèn odyo pou Kreyòl Ayisyen an.*



# Scope of meeting for today: Mattapan Square intersection



# Overview

---

## Background

- Transportation Improvements to Date
- Blue Hill Ave Transportation Action Plan
- RAISE Grant

## October Meeting

- Traffic and Transit
- Walking and Biking
- Small business and cultural identity of Mattapan Square

## Intersection Design

- Overview
- Pedestrian benefits
- Greenway connectivity
- Improvements to bus operations

*Transportation  
Improvements to Date*

# 2016: Mattapan Square Beautification: *Rep Cullinane, PWD, BPRD*



## 2016: Mattapan Square Beautification: *Rep Cullinane, PWD, BPRD*

---



# 2017: Age Friendly Walking: *Age Strong, WalkBoston, MFFC*

---





# 2017: Neponset River Greenway Extended to Mattapan Sq: *DCR*

---



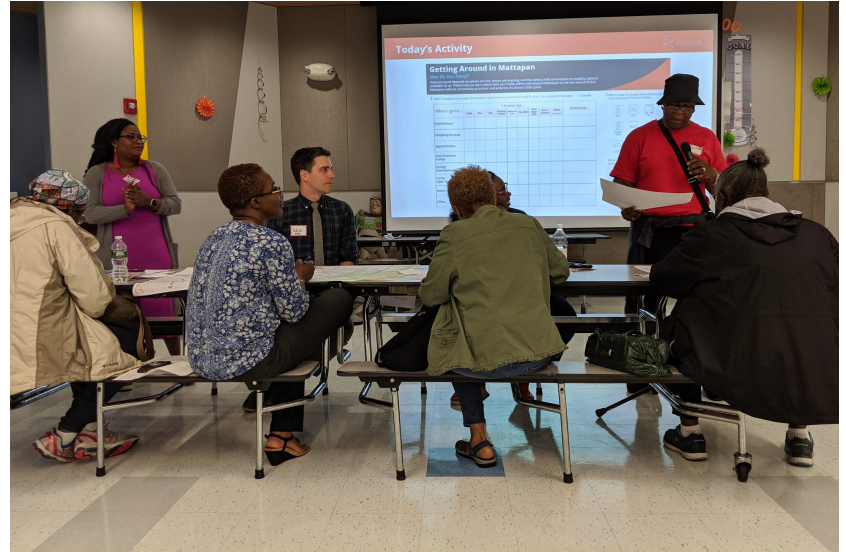
## 2018: Blue Bikes in Mattapan: *Boston Bikes, MAPC, BCBS,*

---



*Mattapan Blue Bike designed by Armani Thomas and Artists for Humanity*

# 2018: PLAN: Mattapan Launched: *BPDA*



*Mural by Mattapan Teen Center, Jeremy Harrison; Site walk with Edgewater Neighbors*

## 2019: Fairmount Line Blue Hill Ave Station: MBTA

---



*Photo by Trea Lavery, Boston Banner*

# 2020: Fairmount Line Pilot: MBTA, Service every 45 minutes, 5 am - 11 pm



## FAIRMOUNT LINE 2021 Spring Schedule Effective April 5, 2021

		Monday to Friday					
		Inbound to Boston					
		AM					
ZONE	STATION	TRAIN #	900	902	904	906	
2	Readville	♻️	4:45	5:45	6:30	7:15	
1A	Fairmount	♻️	f 4:49	5:49	6:34	7:19	
1A	Blue Hill Ave	♻️	f 4:52	5:52	6:37	7:22	
1A	Morton Street	♻️	f 4:55	5:55	6:40	7:25	
1A	Talbot Ave	♻️	f 4:58	5:58	6:43	7:28	
1A	Four Corners/Geneva Ave	♻️	f 5:01	6:01	6:46	7:31	
1A	Uphams Corner	♻️	f 5:04	6:04	6:49	7:34	
1A	Newmarket	♻️	f 5:07	6:07	6:52	7:37	
1A	South Station	♻️	5:15	6:15	7:00	7:45	
		Monday to Friday					
		Outbound from Boston					
		AM					
ZONE	STATION	TRAIN #	903	905	907	909	
1A	South Station	♻️	5:45	6:30	7:15	8:00	
1A	Newmarket	♻️	f 5:53	f 6:38	f 7:23	f 8:08	
1A	Uphams Corner	♻️	f 5:55	f 6:40	f 7:25	f 8:10	
1A	Four Corners/Geneva Ave	♻️	f 5:58	f 6:43	f 7:28	f 8:13	
1A	Talbot Ave	♻️	f 6:01	f 6:46	f 7:31	f 8:16	
1A	Morton Street	♻️	f 6:04	f 6:49	f 7:34	f 8:19	
1A	Blue Hill Ave	♻️	f 6:07	f 6:52	f 7:37	f 8:22	
1A	Fairmount	♻️	f 6:10	f 6:55	f 7:40	f 8:25	
2	Readville	♻️	6:15	7:00	7:45	8:30	
		Saturday, Sunday & Holidays					
		Inbound to Boston					
		AM					
ZONE	STATION	TRAIN #	2902	2904	2906	2908	2910
2	Readville	♻️	7:30	9:00	10:30	12:00	1:30
1A	Fairmount	♻️	f 7:33	f 9:03	f 10:33	f 12:03	f 1:33
1A	Blue Hill Ave	♻️	f 7:36	f 9:06	f 10:36	f 12:06	f 1:36
1A	Morton Street	♻️	f 7:39	f 9:09	f 10:39	f 12:09	f 1:39
1A	Talbot Ave	♻️	f 7:41	f 9:11	f 10:41	f 12:11	f 1:41
1A	Four Corners/Geneva Ave	♻️	f 7:44	f 9:14	f 10:44	f 12:14	f 1:44

# 2021 Route 28 Free Fare Pilot: *Mayor Kim Janey*

---



# 2022 Routes 23, 28, 29 Free Fare Extension: *Mayor Michelle Wu*



Starting **March 1** for the next 2 years,  
**FREE FARES ON BUS ROUTES  
23, 28 AND 29**

A partir del 1 de marzo y durante dos años,  
**LAS LÍNEAS DE AUTOBÚS 23,  
28 Y 29 SERÁN GRATUITAS**

A pati premye Mas yo pou dezan,  
**OTOBIS SOU WOUT 23, 28  
AK 29 AP GRATIS POU  
TOUT PASAJE**

Learn more at: [boston.gov/free-bus](https://boston.gov/free-bus)



# Poll

---

How do you typically travel on Blue Hill Ave

- Walk
- Bus
- Bike
- Car

Did you know about the Free Fare pilot before this meeting?

- Yes
- No

Have you ever taken the Fairmount Line?

- Yes
- No

Have you ever been on the Neponset Greenway?

- Yes
- No

Have you ever ridden a Blue Bike?

- Yes
- No



*Blue Hill Ave  
Transportation  
Action Plan*

# Scope of meeting for today: Mattapan Square intersection



# 2020: Blue Hill Ave Transportation Action Plan: *BTD Transit Team*



**BOOKLET CONTENTS**

• **PUBLIC ART**

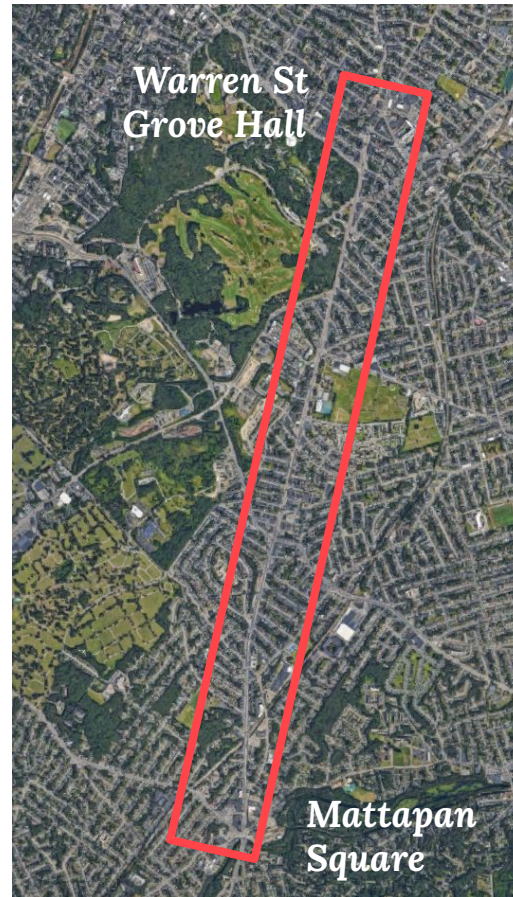
- Paintbox Program
- Artist Profiles
- Mural Sites

• **STREET LAYOUT**

- Design Guidelines
- Concept 1
- Concept 2
- Concept 3
- Concept 4

• **RELATED WORK**

- Fairmount Line Upgrades
- Other Projects
- Near-term Project Timeline



# 2020: Blue Hill Ave Transportation Action Plan: *BTD Transit Team*

---



# 2020: Blue Hill Ave Transportation Action Plan: *BTD Transit Team*

## Community Priority

VISION People's Voice I Boston Today Goals and Targets **ACTION PLAN** People's Voice II Boston in 2030 Projects and Policies

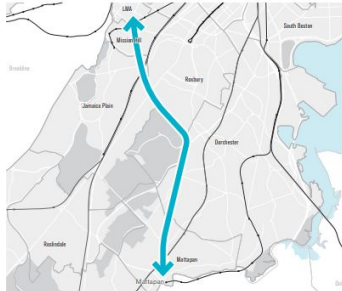
### Cross-town

## Mattapan to LMA Rapid Bus

Faster transit connections to the medical district from southern Boston

### Project Description

A new transit line with high-quality stops, signal priority, all-door boarding, and some exclusive lanes will create direct transit connections for residents of Mattapan and southwest Dorchester to jobs and medical care in Roxbury, Mission Hill, and the Longwood Medical and Academic Area. This involves a rail-like bus service operating where excess roadway width exists today on one of several potential corridors that will be determined in conjunction with the community. Service would be high capacity and high frequency and could interline with the JFK/UMass to LMA rapid bus corridor (p176) and even the West Station to LMA connection (p203), connecting together southern Boston, the LMA, and Beacon Yards. Future upgrades could see tracks and streetcar service initiated as ridership grows.



### Project Score

- Access 1
- Safety 1
- Reliability
- Sustainability/Resiliency 1
- Sustainability/Resiliency 2
- Governance
- Access 2
- Safety 2
- Affordability
- Sustainability/Resiliency 2

#19 in weighted Boston-only public voting

### Implementation

**Approximate Cost:** \$55 million for design and construction with vehicle costs to be estimated  
**Potential Funding Sources:** City capital budget for

### Benefits and Issues Addressed

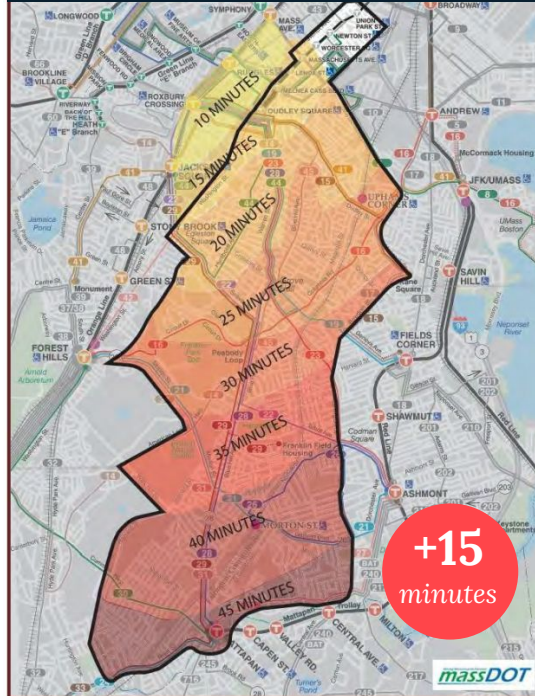
This investment will support economic opportunity along a corridor with heavy bus ridership but unreliable service, while—depending on the alignment—potentially improving other connections that lead via Dudley Square and Downtown as well. Cross-town connections from this part of the city are in high demand, as shown in the map below. This investment will provide a high-quality solution.

In the city's travel needs map, the downtown and neighborhood region (e.g., through Industry Hill to Mattapan) is one of the highest in the region in terms of transportation demand.

## Go Boston 2030 Goals:

- Expand access
- Improve reliability
- Enhance safety

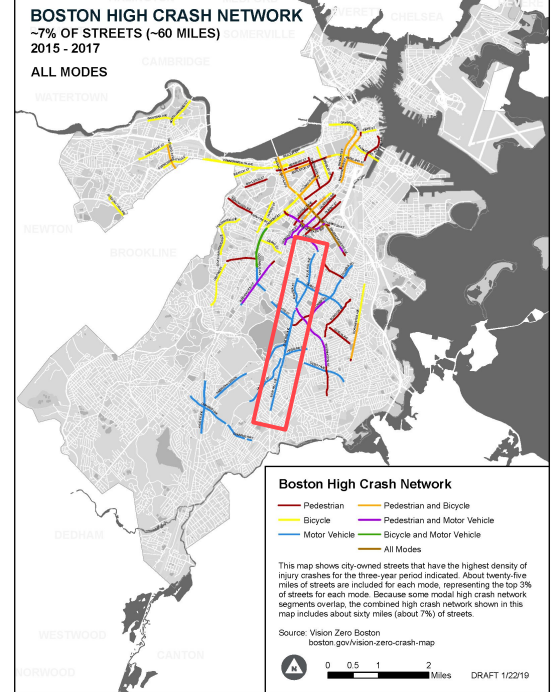
## Travel Time Inequities



## Safety Concerns

### BOSTON HIGH CRASH NETWORK ~7% OF STREETS (~60 MILES) 2015 - 2017

ALL MODES



### Boston High Crash Network

- Pedestrian
- Pedestrian and Bicycle
- Bicycle
- Pedestrian and Motor Vehicle
- Motor Vehicle
- Bicycle and Motor Vehicle
- All Modes

This map shows city-owned streets that have the highest density of injury crashes for the three-year period indicated. About twenty-five miles of streets are included for each mode, representing the top 3% of streets for each mode. Because some modal high crash network segments overlap, the combined high crash network shown in this map includes about sixty miles (about 7%) of streets.

Source: Vision Zero Boston  
 boston.gov/vision-zero-crash-map

0 0.5 1 2 Miles DRAFT 1/22/19

# Design to Minimize Delay for Everyone



# Shared Goals

---

- *Improve bus reliability and reduce travel time inequities*
- *Minimize delays*
- *Improve conditions for older adults and persons with disabilities*
- *Incorporate high quality bike facilities*
- *Reduce heat island effects*
- *Contribute to a thriving small business community*

RAISE *Grant*



# \$15M RAISE Grant: *US DOT, City of Boston, with MBTA*

 2021 RAISE GRANT APPLICATION  
**BLUE HILL AVENUE  
MULTIMODAL CORRIDOR**

**RAISE Funding Request**  
\$25M

**Total Project Cost**  
\$39.5M

**Local Matching Funds**  
\$6.2M Massachusetts Bay Transportation Authority  
\$8.3M City of Boston  
\$14.5M Total Match

**MAYOR KIM JANEY**  
CITY OF BOSTON  
1 City Hall Square, Suite 500  
Boston, MA 02201-2013  
(617) 635-4500  
mayor@boston.gov



# What is the RAISE Grant?

## Federal Grant Program to Modernize and Create New American Infrastructure

- **Highly competitive**
- **Boston awarded \$15M in November 2021**

Evaluated based on “*safety, environmental sustainability, quality of life, economic competitiveness, state of good repair, innovation, and partnership...improvements to racial equity, reduce impacts of climate change and create good-paying jobs.*”

**2021 RAISE GRANT APPLICATION**  
**BLUE HILL AVENUE**  
**MULTIMODAL CORRIDOR**

**RAISE Funding Request**  
\$25M

**Total Project Cost**  
\$39.5M

**Local Matching Funds**  
\$6.2M Massachusetts Bay Transportation Authority  
\$8.3M City of Boston  
\$14.5M Total Match

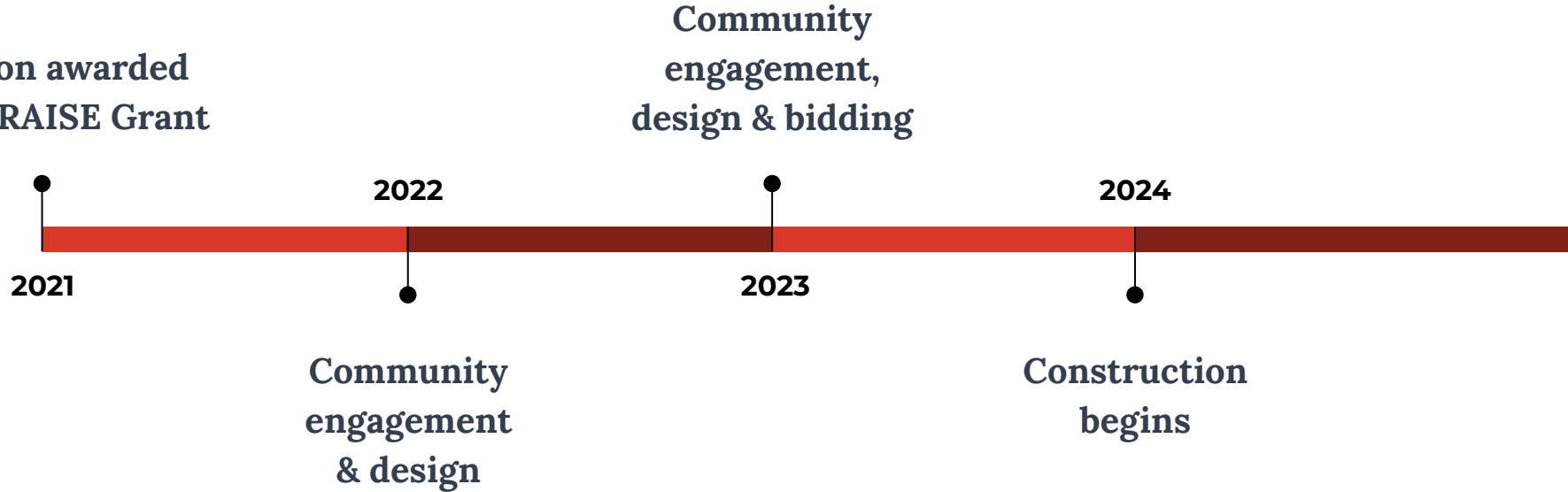
**MAYOR KIM JANEY**  
CITY OF BOSTON  
1 City Hall Square, Suite 500  
Boston, MA 02201-2013  
(617) 635-4500  
mayor@boston.gov

Images: Aerial view of the Blue Hill Avenue multimodal corridor showing a new transit lane and surrounding buildings; A person painting a mural on a utility box.

# RAISE Grant Schedule

---

Boston awarded  
\$15M RAISE Grant



*October Meeting on  
Mattapan Square*

# *What We Heard: Breakout on Traffic & Transit*

- People would take the bus more if it was faster, more frequent, more reliable
- Double parking slows everyone down, causes weaving, and makes it hard to drive or ride a bike
- Buses can't reach the curb, making the bus stops inaccessible

***“Buses don't run often enough, not fast enough. You can sometimes walk faster than the bus”***

# *What We Heard: Breakout on Walking and Biking*

- When you walk or ride a bike, you can predict when you will arrive
- More walking/biking would alleviate traffic
- Better for health and environment
- **Major concerns about the safety of crossing the street for older adults and people with disabilities**

***“(biking is) not only healthy for people using the bikes, but ALSO healthy for the environment overall (more bikes and walking, the better for all)”***

# *What We Heard: Breakout on Small Business and Cultural Identity of Mattapan Square*

- Unique and vibrant
- A Caribbean culture that “feels like home”
- Hustle and bustle; crowded sidewalks; people bump into each other (good and bad)
- Would like more healthy food options, coffee shops and neighborhood gathering places
- Interesting historical buildings
- Needs more public space and trees

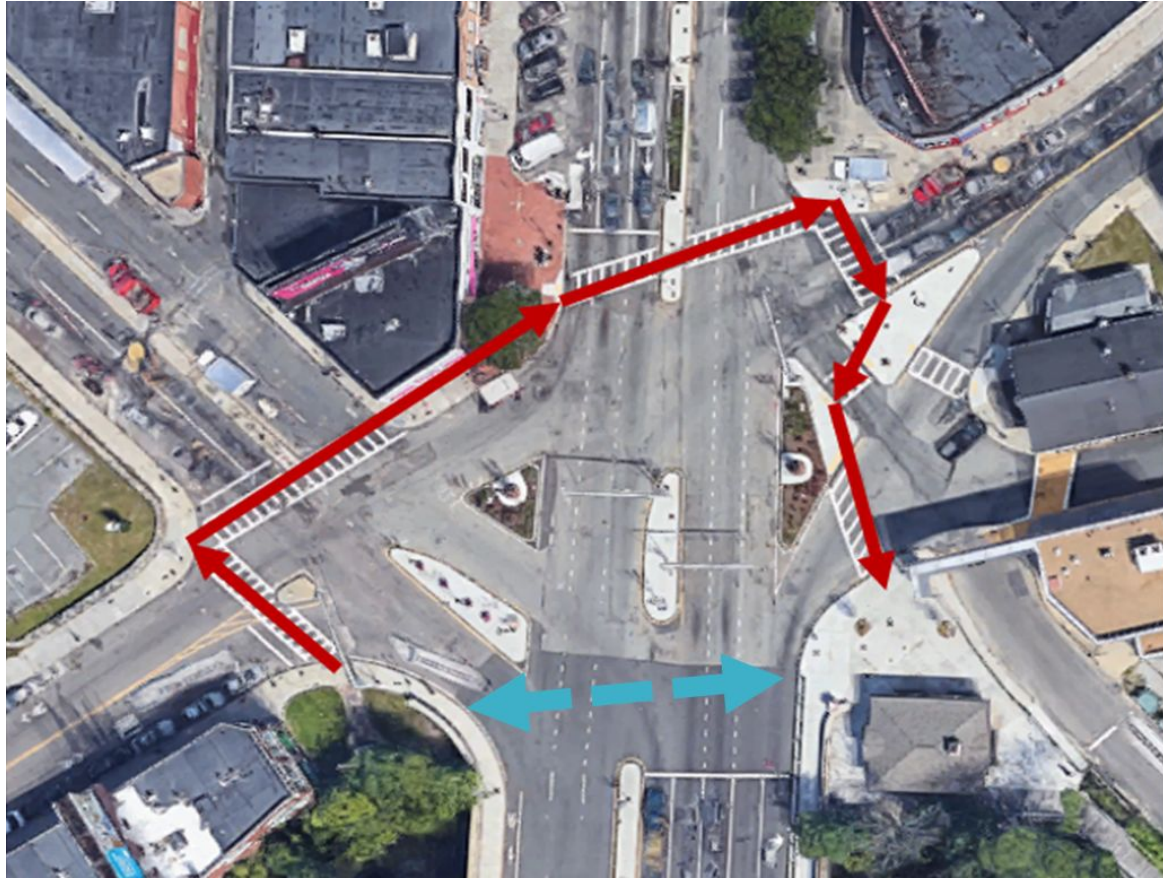
***“I wish there was an initiative to showcase the Haitian cultural influence. An annual event to teach us about the culture ... (this) will make people want to come”***

*Proposed Mattapan Square  
Intersection Design*



## Existing: Circuitous walking routes

---



# Existing: Sidewalk obstructions and pinch points

---

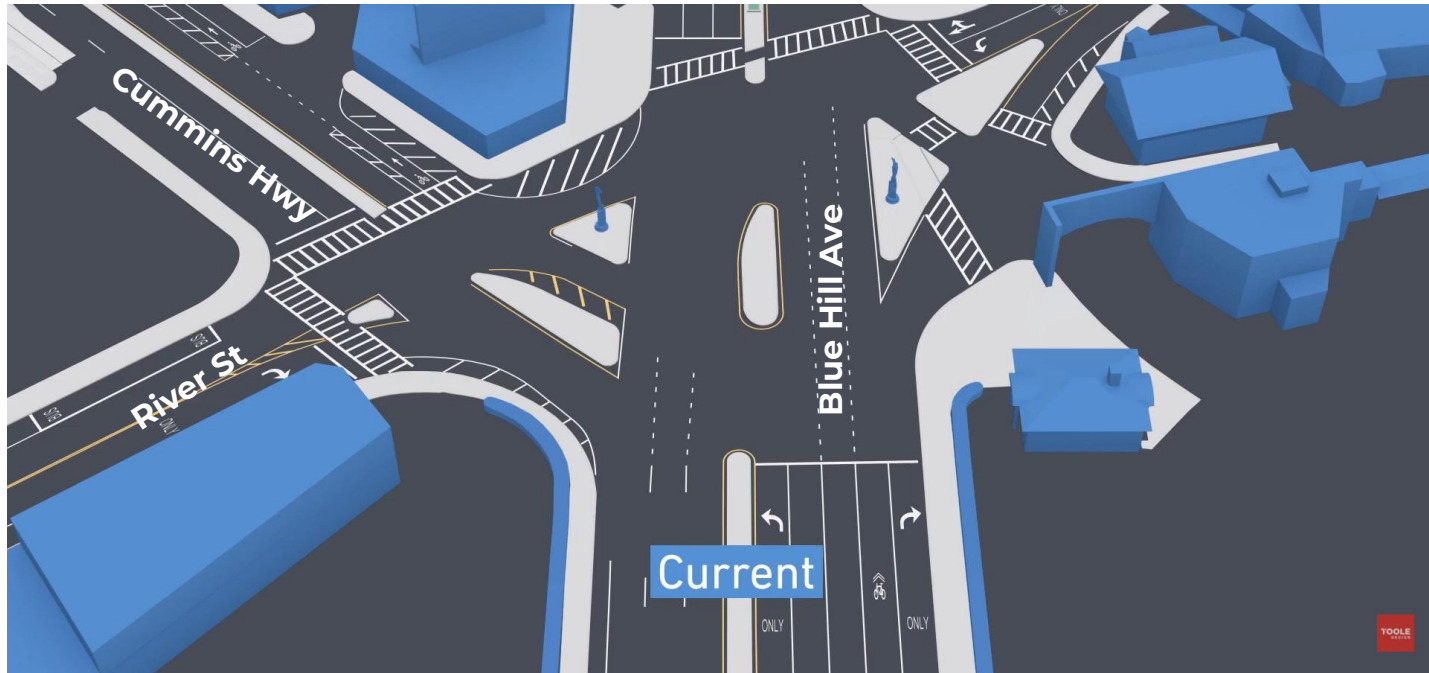


# Existing: Circuitous bus route into the station



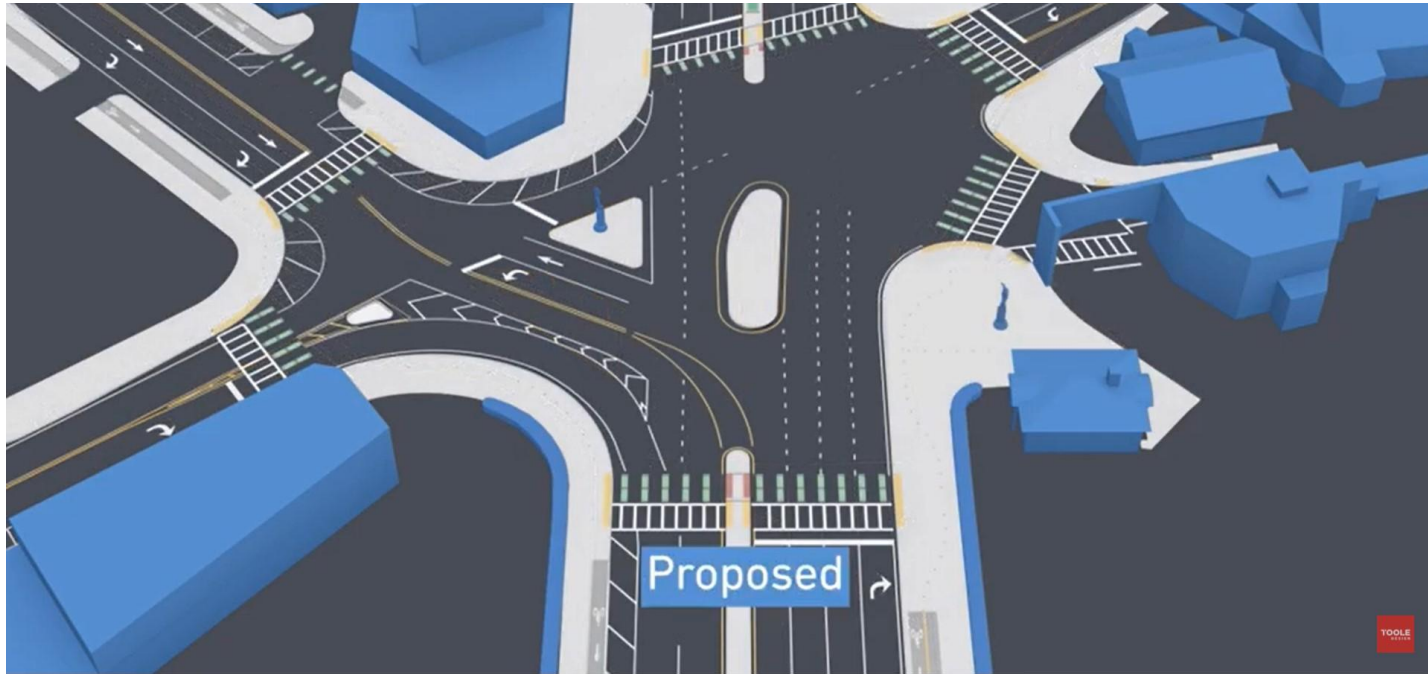
# Existing Design

---



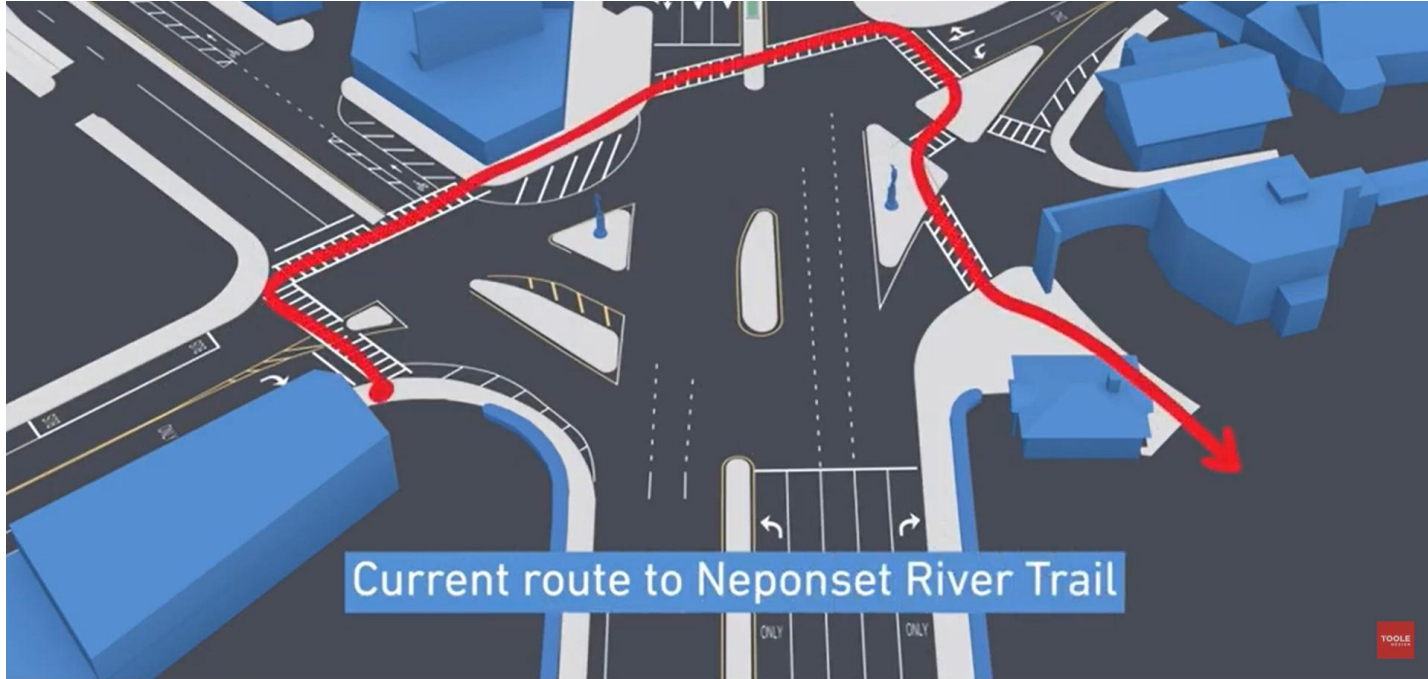
# Proposed Design

---



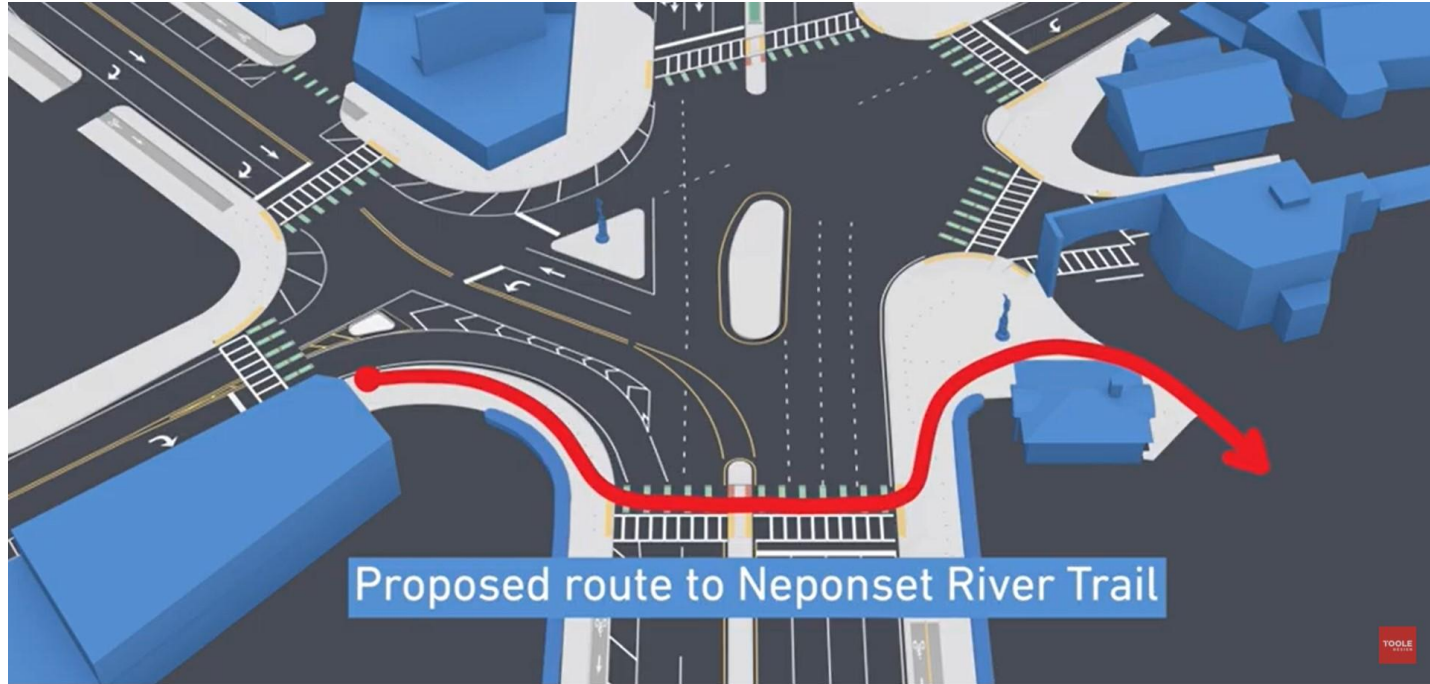
# Existing Design

---



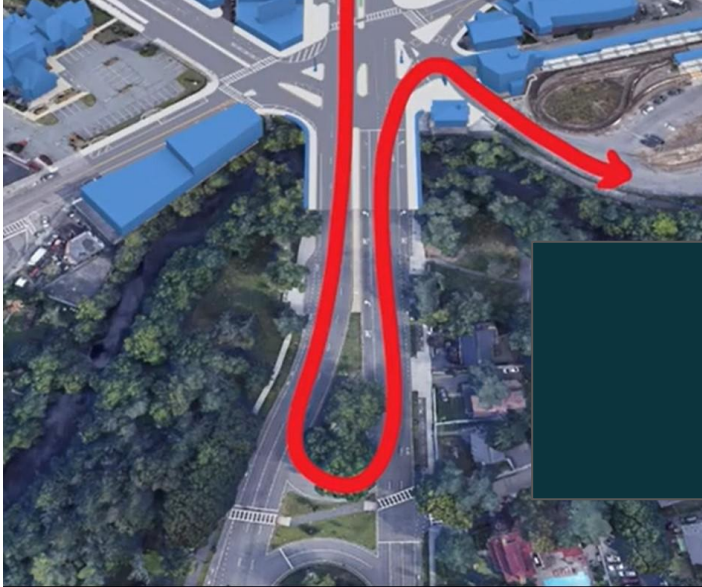
# Proposed Design

---

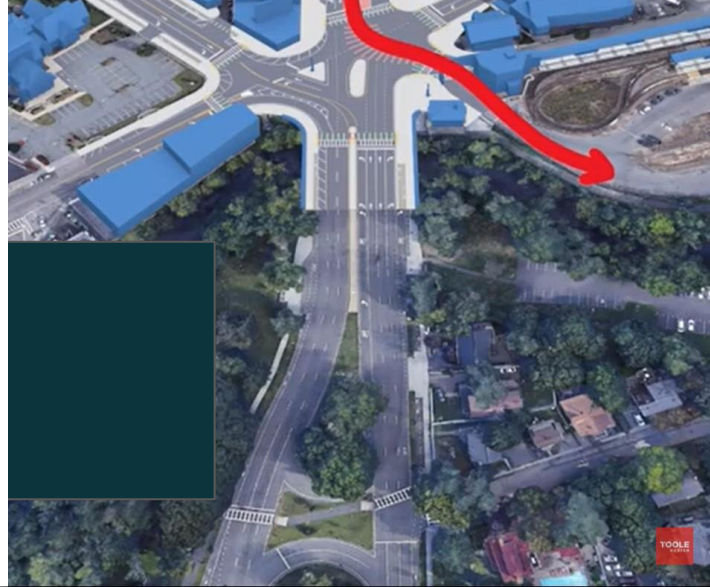


---

## Existing Design



## Proposed Design





# Next Steps

---

## **February 2022:**

- February 23, 6:30 pm: Cummins Highway, Street trees, [bit.ly/Cummins-Trees](https://bit.ly/Cummins-Trees)
- February 26, 11 am: T-Talk for youth and teens (by MFFC and Powerful Pathways)

## **Remainder of 2022-spring 2023:**

- Continue community engagement and design, seek funding for construction

## **STAY INVOLVED**

### **Visit our website: [boston.gov/blue-hill-mattapan](https://boston.gov/blue-hill-mattapan)**

- Join our mailing list

### **Greater Mattapan Neighborhood Council, Public Services Committee**

Meetings on the first Tuesday each month, 6:30 PM

[g-mnc.org](https://g-mnc.org)