

PROJECT NAME
 WINDOW RESTORATION &
 REPLACEMENT
 PROJECT ADDRESS
 259-261 WEST NEWTON

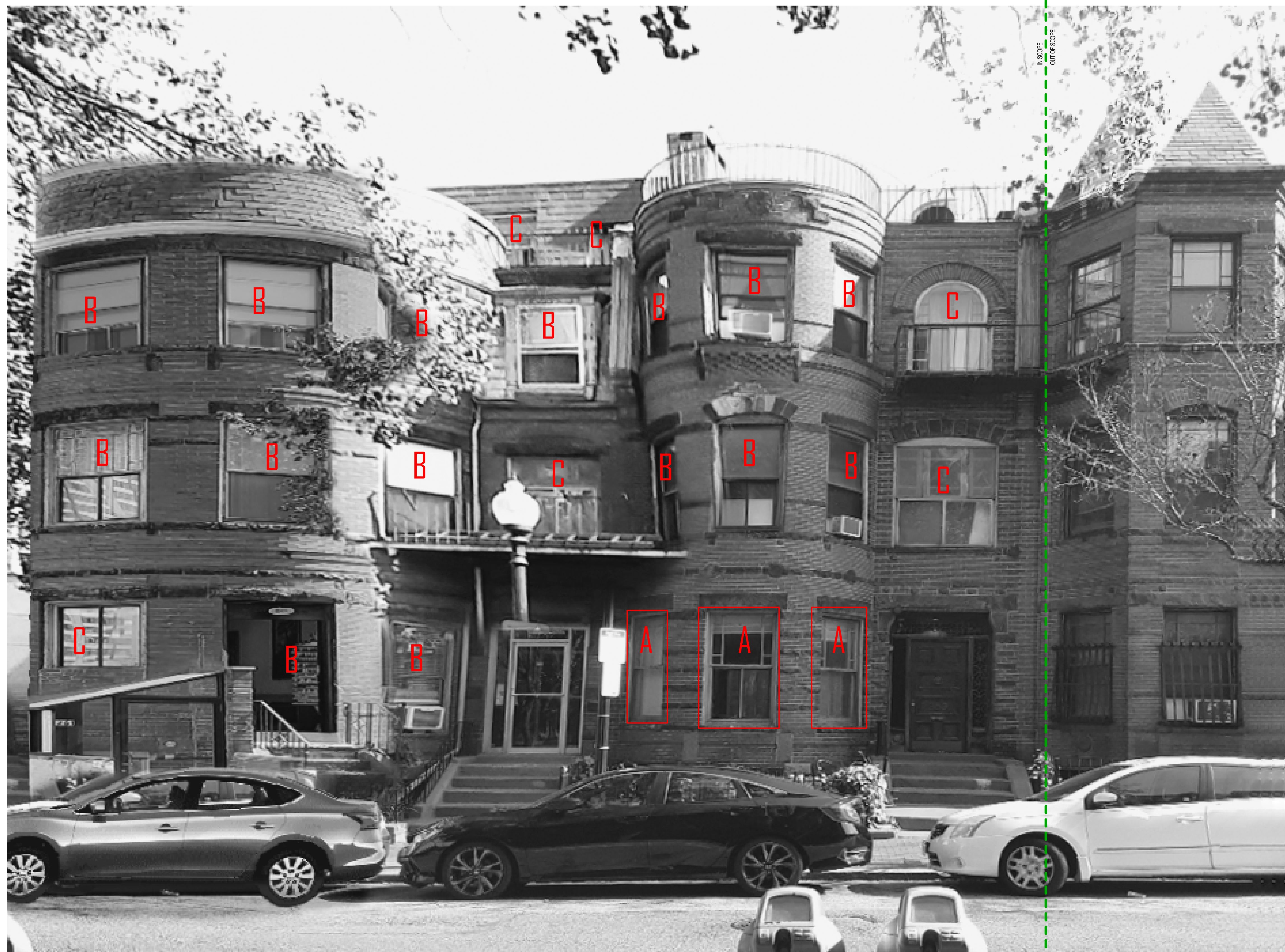
PROJECT PHASE
 LANDMARKS APPROVAL

ARCHITECT

VANKO
 STUDIO
 ARCHITECTS

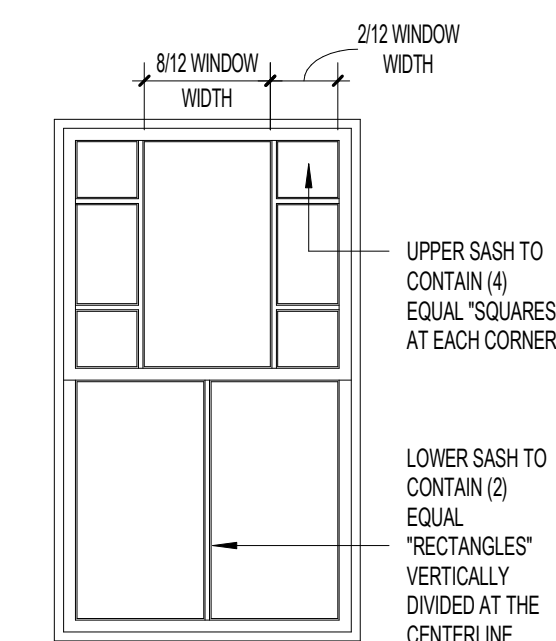
407 DUDLEY STREET, SUITE #8
 BOSTON, MA 02119
 617.502.1120

CONSULTANT(S)



- WINDOWS TO BE RESTORED PER <https://www.historynewengland.org/preservation-for-homeowners-communities/your-old-or-historic-home/wood-window-specifications/>
- RESTORATION CONTRACTOR TO TAKE ALL LEAD PAINT PRECAUTIONS

"A" WINDOW RESTORATION
 12" = 1'-0"



- ALL NEW DOUBLE HUNG WINDOWS SHALL GENERALLY FOLLOW THIS CONFIGURATION
- REPLACEMENT WINDOWS TO BE ALUMINUM CLAD WOOD TRUE DIVIDED LIGHT (TDL) WINDOWS EQUAL TO MARVIN ULTIMATE DOUBLE HUNG G2
- COLOR TO CLOSELY MATCH EXISTING TRIM COLOR
- CONTRACTOR TO THOROUGHLY PREPARE ROUGH OPENING FOR NEW WINDOW INSERTION. CONTRACTOR TO REINSTALL EXISTING INTERIOR TRIMS AND MOLDINGS WHERE POSSIBLE

"B" WINDOW REPLACEMENT
 3/8" = 1'-0"

- UNIQUE WINDOWS TO BE ACCURATELY MEASURED TO ROUGH OPENINGS AND MANUFACTURED TO EXACT SIZE
- UNIQUE WINDOWS TO BE ACCURATELY COPIED RELATIVE TO DIVISIONS
- REPLACEMENT WINDOWS TO BE ALUMINUM CLAD WOOD TRUE DIVIDED LIGHT (TDL) WINDOWS EQUAL TO MARVIN ULTIMATE DOUBLE HUNG G2
- COLOR TO CLOSELY MATCH EXISTING TRIM COLOR
- CONTRACTOR TO THOROUGHLY PREPARE ROUGH OPENING FOR NEW WINDOW INSERTION. CONTRACTOR TO REINSTALL EXISTING INTERIOR TRIMS AND MOLDINGS WHERE POSSIBLE

"C" UNIQUE WINDOW REPLACEMENT
 1/2" = 1'-0"

APPROVALS

REGISTERED PROFESSIONAL

SHEET NAME
 FRONT ELEVATION

SHEET USE
 DATE 3/9/22
 SCALE As indicated
 REVISION
 REV ISSUE

A201



PROJECT NAME
 WINDOW RESTORATION &
 REPLACEMENT
 PROJECT ADDRESS
 259-261 WEST NEWTON

PROJECT PHASE
 LANDMARKS APPROVAL

ARCHITECT

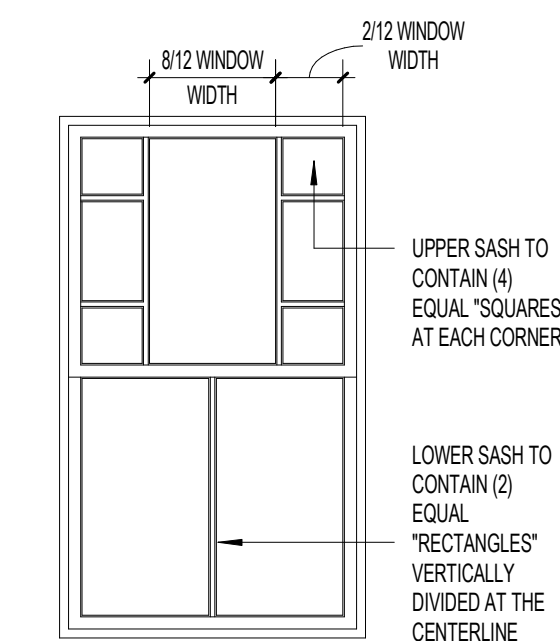
VANKO
 STUDIO
 ARCHITECTS

407 DUDLEY STREET, SUITE #8
 BOSTON, MA 02119
 617.502.1120

CONSULTANT(S)

1. WINDOWS TO BE RESTORED PER <https://www.historicnewengland.org/preservation/for-homeowners-communities/your-old-or-historic-home/wood-window-specifications/>
2. RESTORATION CONTRACTOR TO TAKE ALL LEAD PAINT PRECAUTIONS

"A" WINDOW RESTORATION
 12" = 1'-0"



1. ALL NEW DOUBLE HUNG WINDOWS SHALL GENERALLY FOLLOW THIS CONFIGURATION
2. REPLACEMENT WINDOWS TO BE ALUMINUM CLAD WOOD TRUE DIVIDED LIGHT (TDL) WINDOWS EQUAL TO MARVIN ULTIMATE DOUBLE HUNG G2
3. COLOR TO CLOSELY MATCH EXISTING TRIM COLOR
4. CONTRACTOR TO THOROUGHLY PREPARE ROUGH OPENING FOR NEW WINDOW INSERTION. CONTRACTOR TO REINSTALL EXISTING INTERIOR TRIMS AND MOLDINGS WHERE POSSIBLE

"B" WINDOW REPLACEMENT
 3/8" = 1'-0"

1. UNIQUE WINDOWS TO BE ACCURATELY MEASURED TO ROUGH OPENINGS AND MANUFACTURED TO EXACT SIZE
2. UNIQUE WINDOWS TO BE ACCURATELY COPIED RELATIVE TO DIVISIONS
3. REPLACEMENT WINDOWS TO BE ALUMINUM CLAD WOOD TRUE DIVIDED LIGHT (TDL) WINDOWS EQUAL TO MARVIN ULTIMATE DOUBLE HUNG G2
4. COLOR TO CLOSELY MATCH EXISTING TRIM COLOR
5. CONTRACTOR TO THOROUGHLY PREPARE ROUGH OPENING FOR NEW WINDOW INSERTION. CONTRACTOR TO REINSTALL EXISTING INTERIOR TRIMS AND MOLDINGS WHERE POSSIBLE

"C" UNIQUE WINDOW REPLACEMENT
 12" = 1'-0"

APPROVALS

REGISTERED PROFESSIONAL

SHEET NAME
 REAR ELEVATION

SHEET USE
 DATE 3/9/22
 SCALE As indicated
 REVISION
 REV ISSUE

A202



PROJECT NAME
 WINDOW RESTORATION &
 REPLACEMENT
 PROJECT ADDRESS
 259-261 WEST NEWTON

PROJECT PHASE
 LANDMARKS APPROVAL

ARCHITECT
VANKO
 STUDIO
 ARCHITECTS
 407 DUDLEY STREET, SUITE #8
 BOSTON, MA 02119
 617.502.1120

CONSULTANT(S)

APPROVALS

REGISTERED PROFESSIONAL

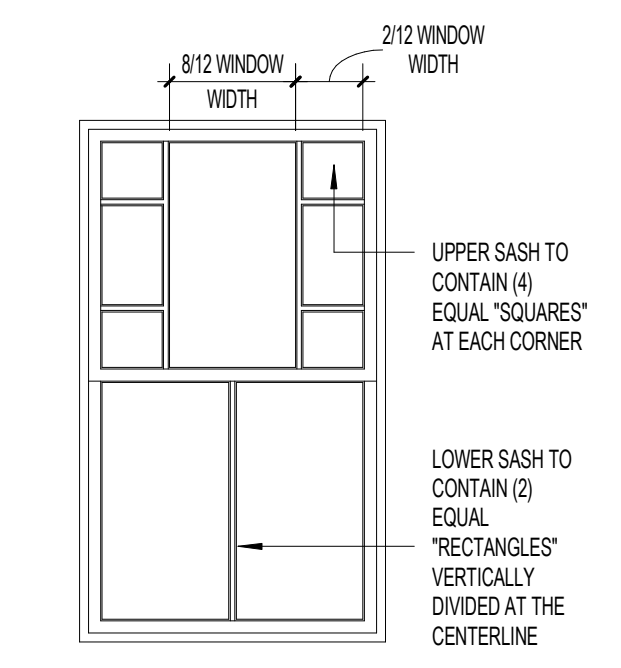
SHEET NAME
 SIDE ELEVATION

SHEET USE
 DATE 3/9/22
 SCALE As indicated
 REVISION
 REV ISSUE

A203

- WINDOWS TO BE RESTORED PER <https://www.historicnewengland.org/preservation/for-homeowners-communities/your-old-or-historic-home/wood-window-specifications/>
- RESTORATION CONTRACTOR TO TAKE ALL LEAD PAINT PRECAUTIONS

"A" WINDOW RESTORATION
 1/2" = 1'-0"



- ALL NEW DOUBLE HUNG WINDOWS SHALL GENERALLY FOLLOW THIS CONFIGURATION
- REPLACEMENT WINDOWS TO BE ALUMINUM CLAD WOOD TRUE DIVIDED LIGHT (TDL) WINDOWS EQUAL TO MARVIN ULTIMATE DOUBLE HUNG G2
- COLOR TO CLOSELY MATCH EXISTING TRIM COLOR
- CONTRACTOR TO THOROUGHLY PREPARE ROUGH OPENING FOR NEW WINDOW INSERTION. CONTRACTOR TO REINSTALL EXISTING INTERIOR TRIMS AND MOLDINGS WHERE POSSIBLE

"B" WINDOW REPLACEMENT
 3/8" = 1'-0"

- UNIQUE WINDOWS TO BE ACCURATELY MEASURED TO ROUGH OPENINGS AND MANUFACTURED TO EXACT SIZE
- UNIQUE WINDOWS TO BE ACCURATELY COPIED RELATIVE TO DIVISIONS
- REPLACEMENT WINDOWS TO BE ALUMINUM CLAD WOOD TRUE DIVIDED LIGHT (TDL) WINDOWS EQUAL TO MARVIN ULTIMATE DOUBLE HUNG G2
- COLOR TO CLOSELY MATCH EXISTING TRIM COLOR
- CONTRACTOR TO THOROUGHLY PREPARE ROUGH OPENING FOR NEW WINDOW INSERTION. CONTRACTOR TO REINSTALL EXISTING INTERIOR TRIMS AND MOLDINGS WHERE POSSIBLE

"C" UNIQUE WINDOW REPLACEMENT
 1/2" = 1'-0"