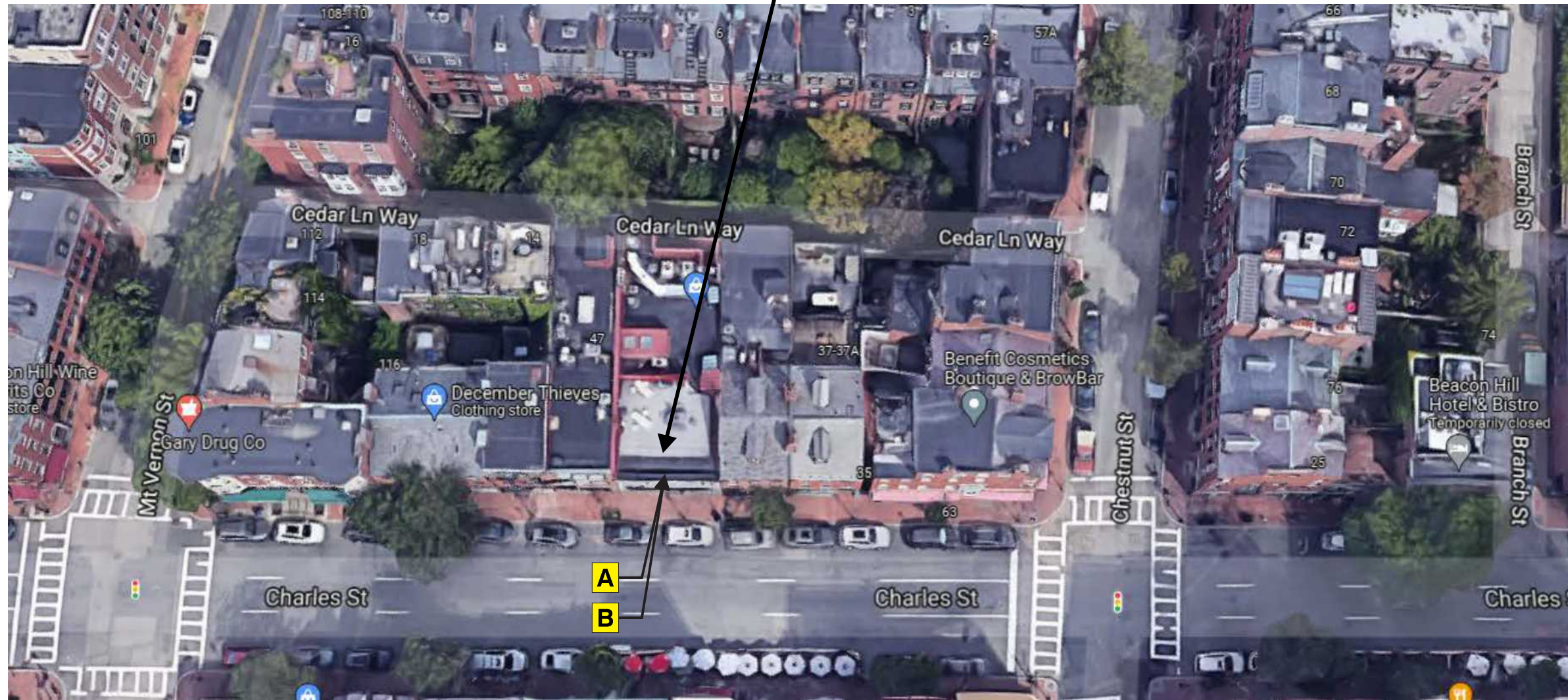


202571-1-4

39 Charles St  
Boston, MA 02114

Revisions
RTW 09.22.21
RTW 09.24.21
RTW 09.28.21





- A** One (1) S/F HDU panel sign
- B** One (1) non-illuminated D/F blade sign

Sales:	Lisa Koebel
PM:	Scott Sindle
Art:	BNN 9.15.21
Drwg #:	202571-1-4

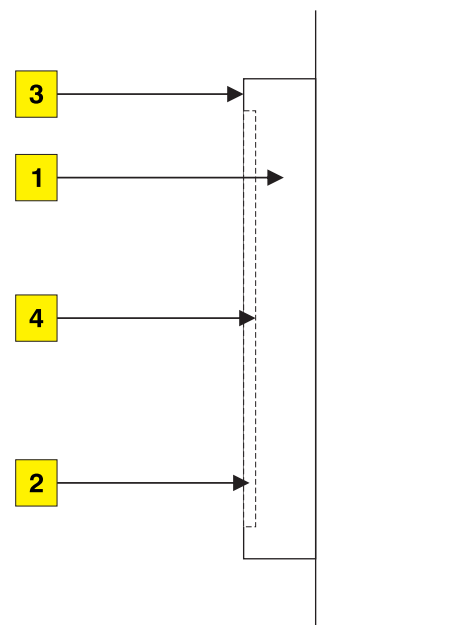
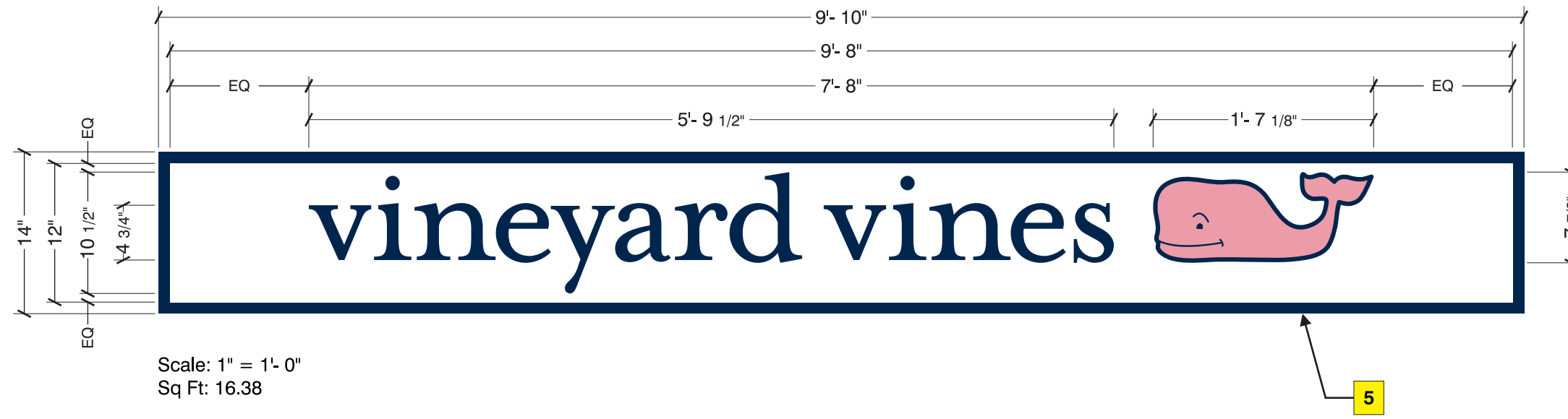


Existing



**Proposed**  
Sign rendered proportional to the photo

Sales:	Lisa Koebel
PM:	Scott Sindle
Art:	BNN 9.15.21
Drwg #:	202571-1-4



**Panel**

<b>1</b>	3" thick HDU panel painted white.
<b>2</b>	1/2" deep routed background.
<b>3</b>	1" square bead to edge on sign face, painted PMS 289 C.
<b>4</b>	Logo stenciled to face, painted PMS 289 C & PMS 197 C.

**Note:**  
Exact mounting TBD.

**Mounting**

<p><b>Wedge anchors</b> For use in masonry applications.</p>	<p><b>Lag screw</b> Wood lags for solid wood backing. Concrete lags for solid masonry applications. Only when specified by NAS.</p>
<p><b>Thru-Bolt w/ (Preferred)</b> Hollow walls w/ rear access. Backing- U-Channel, angle iron or wood.</p>	<p><b>Toggle bolt</b> For use in hollow walls w/ suitable wall materials.</p>
<p><b>Stud mounted</b></p>	

**Colors to match**



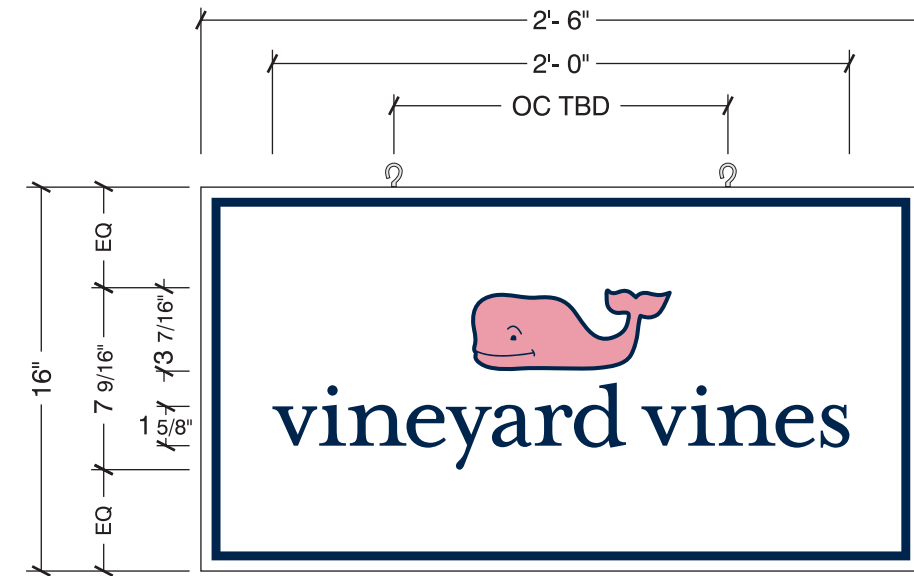
Sales:	Lisa Koebel
PM:	Scott Sindle
Art:	BNN 9.15.21
Drwg #:	202571-1-4



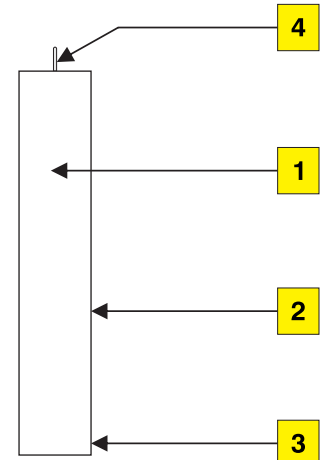
**Existing**



**Proposed**  
Sign rendered proportional to the photo



Scale: 1 1/2" = 1'-0"  
Sq Ft: 4.17



NTS

**Blade**

- 1** 3" thick HDU blade sign painted white.
- 2** Logo stenciled to both sides of faces, painted PMS 289 C & PMS 197 C.
- 3** 1/4" thick border painted PMS 289 C.

**Mounting**

- 4** Blade sign mounted w/ hooks.

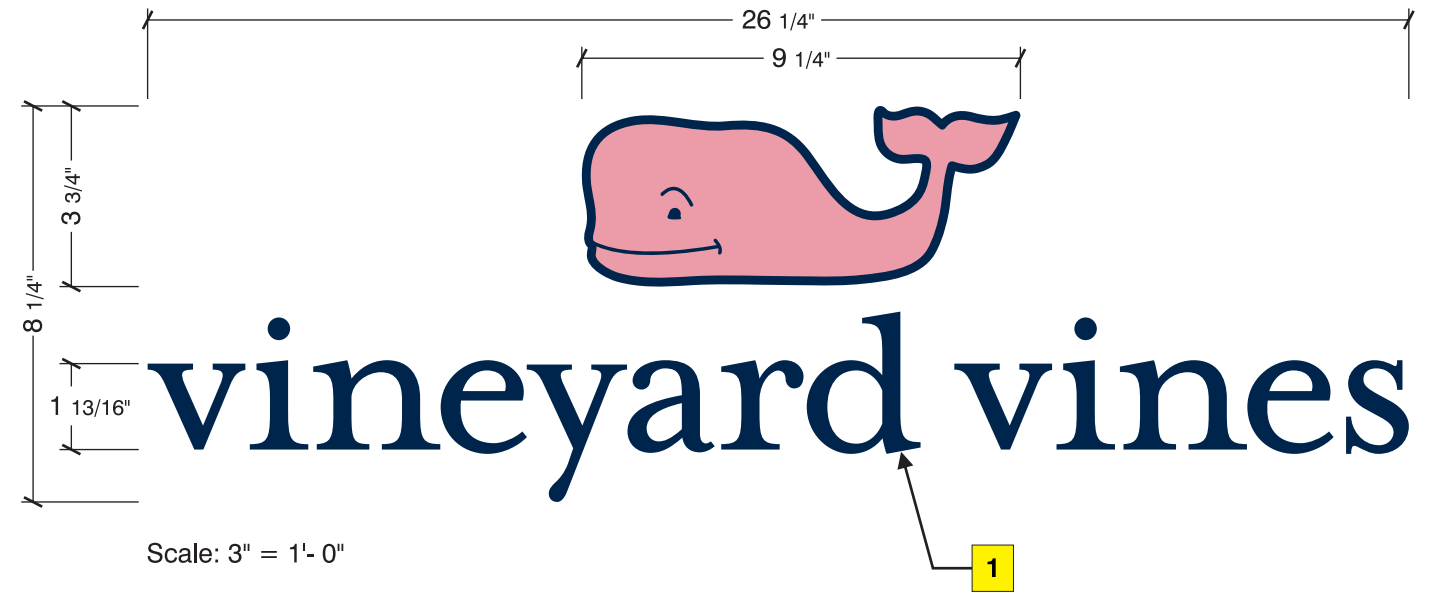
**Colors to match**



Sales:	Lisa Koebel
PM:	Scott Sindle
Art:	BNN 9.15.21
Drwg #:	202571-1-4



**Proposed**  
Sign rendered proportional to the photo



**Vinyl**

- 1 Vinyl applied second surface at 18" from bottom mullion to the top of the vinyl.

**Colors to match**



Sales:	Lisa Koebel
PM:	Scott Sindle
Art:	BNN 9.15.21
Drwg #:	202571-1-4