

B

Welcome to the Meeting! We will begin at 6:05.

BLUE HILL AVE

Transportation Action Plan and Vision Update

September 30, 2020

Slide 1

Mayor Martin J. Walsh



B

BLUE HILL AVE

Transportation Action Plan and Vision Update

September 30, 2020

Slide 2

Mayor Martin J. Walsh



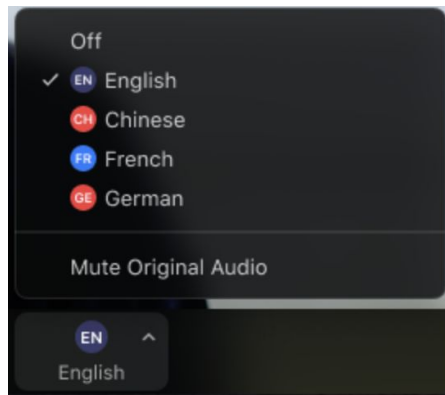
LANGUAGE INTERPRETATION

For those on a computer:

1. In your meeting/webinar controls, click **Interpretation**.



2. Click the language that you would like to hear.



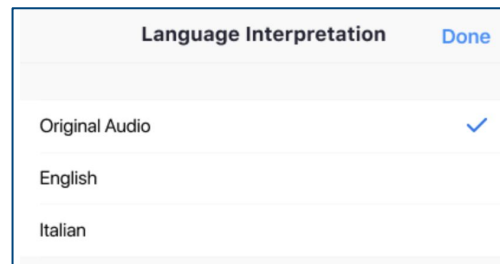
3. (Optional) To hear the interpreted language only, click **Mute Original Audio**.

For those on a mobile device:

1. In your meeting controls, tap the ellipses icon (...).



2. Tap **Language Interpretation**.
3. Tap the language you would like to hear.



4. (Optional) Tap the toggle to **Mute Original Audio**.



5. Click **Done**.

- We will be recording this meeting and posting it on the BTB website so anyone who is not present can listen in later.
- Everyone except for the speaker will be on mute during the meeting.
 - If you want to speak, please leave a message in the Chat or use the “**hand raise**” function. We will then unmute you and give you the chance to speak.
- If you have a question but don’t want to speak, feel free to leave the question in the Chat and we will read it aloud.
- We will unmute everyone for the last half hour or so, to allow people who are in the meeting only on their phones to ask questions.
- If you have any questions after the meeting, please email Matt Moran at matthew.moran@boston.gov
 - We will also leave his email in the chat so you can copy it directly.
- For any technical questions, you can message Alex Renaud, Grace Pattarini, or Matt Moran directly and they can work with you to solve the issue.

An aerial photograph of a city street, likely in Boston, showing a mix of residential and commercial buildings, trees, and a wide road with a median. The image is partially obscured by a red logo in the top left and a dark blue banner at the bottom.

B

CITY of BOSTON

MEETING CONTEXT

Welcome!

Slide 5

MEETING CONTEXT

Purpose of Meeting

- Update the Community
- Continue to Hear Your Comments and Issues

Our Mission

- Safety, Public Space, and Mobility
- Short-Term State of Good Repair
 - Safety Improvements
- Long-Term Vision and Action Plan

Corridor Importance

- Equity
- Public and Active Transportation
 - High Ridership
 - High Delay
- Environment
- Community

OFFICE HOURS – COME CHAT WITH US!

Here are other opportunities to engage with the Transit Team on Blue Hill Ave



In-Person

Virtual

1

Date: Thursday, October 1
Time: 12:00 PM – 2:00 PM
Place: Grove Hall Library Branch

3

Date: Tuesday, October 6
Time: 12:00 PM – 2:00 PM
Place: Zoom

2

Date: Wednesday, October 7
Time: 4:00 PM – 6:00 PM
Place: Mattapan Municipal Lot #14
Corner of Cummings Highway
and Fairway St

4

Date: Tuesday, October 6
Time: 5:00 PM – 7:00 PM
Place: Zoom

Registration information for these events can be found on the project page: boston.gov/blue-hill-avenue

MEETING AGENDA

There will be **three** ways for interactive participation throughout the meeting today



- Project Mission
- What We Have Heard
- Early Action Items
- Long-Term Vision
- Next Steps
- Questions & Discussion



INTRODUCTION

AGENCY COLLABORATION



The Boston Transportation Department maintains physical features to manage movement along streets:

- Traffic Signals
- Street Widths
- Curb Regulations
- Lane Assignments

The MBTA operates and maintains bus facilities along the corridor, including:

- Routes
- Schedules
- Fares
- Fleet Size and Distribution
- Bus Operator Training

CITY DEPARTMENTS IN COLLABORATION

Though the **Boston Transportation Department** is leading this plan...

... we are working closely with many other City departments.



Transportation



Neighborhood Services



Boston Bikes



Age Strong



Disabilities Commission



Public Works



Planning and
Development Agency

RELATED CITY of BOSTON PROJECTS



Planning and
Development Agency



Public Works



Parks and Recreation



Transportation

- **PLAN Mattapan**
Community-lead plan for Mattapan's future growth
- **DND Blue Hill Ave Action Plan**
Spark economic development, business growth opportunities, and foster the entrepreneurial spirit in the community
- **Franklin Park Masterplan**
Crafting a vision for the upcoming \$28 million investment
- **Cummins Highway**
Reconstruction to improve safety and access for all transportation modes
- **Warren Street**
Working to reach transit priority goals to combat delays and create safer access
- **American Legion Highway**
Creating slower, safer streets and working towards transit priority

MATTAPAN SQUARE - COMPLETE STREETS PROJECT

EXISTING CONDITIONS



Mattapan Square deserves a redesign that ensures the safe, comfortable movement of pedestrians. We plan to build on existing public realm assets such as **street trees, lighting and seating** to create an **enhanced pedestrian experience**.



Sign up for the newsletter and stay up to date at:

Website: bit.ly/PlanMattapan

This City planning initiative seeks to ensure that we preserve wisely, enhance equitably, and grow inclusively. The team is working with the community to create a comprehensive vision for the Mattapan planning area and guide future growth and investment.

FAIRMOUNT LINE

SERVICE ENHANCEMENTS

Eight added weekly trips

20% total increase

Earlier and later service

CHARLIE CARD INITIATIVE

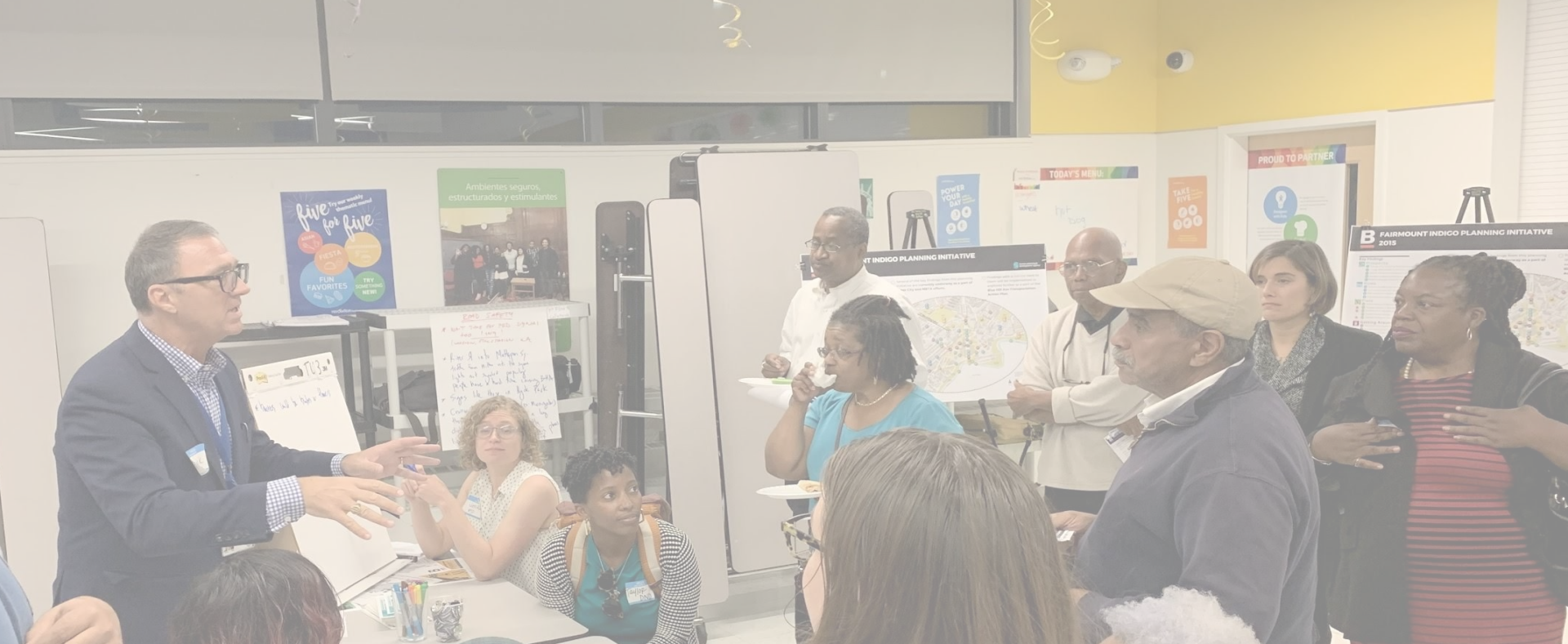
Access Fairmount line using your Charlie Card!

Free transfers within 2 hours

FUTURE VISION

Considerations

- Electrification
- Station design studies
- Network integration



PROJECT MISSION

PROJECT MISSION

The Blue Hill Ave. Transportation Action Plan seeks to *improve quality of life* for corridor users in *partnership with local residents* to *address inequities* and *reimagine how the corridor functions.*



PROJECT MISSION

Transportation

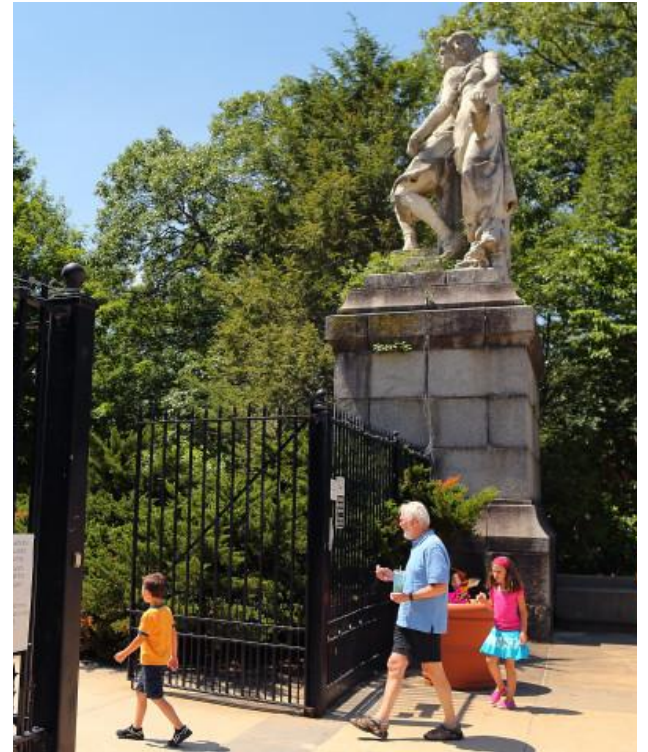


Public Realm & Safety

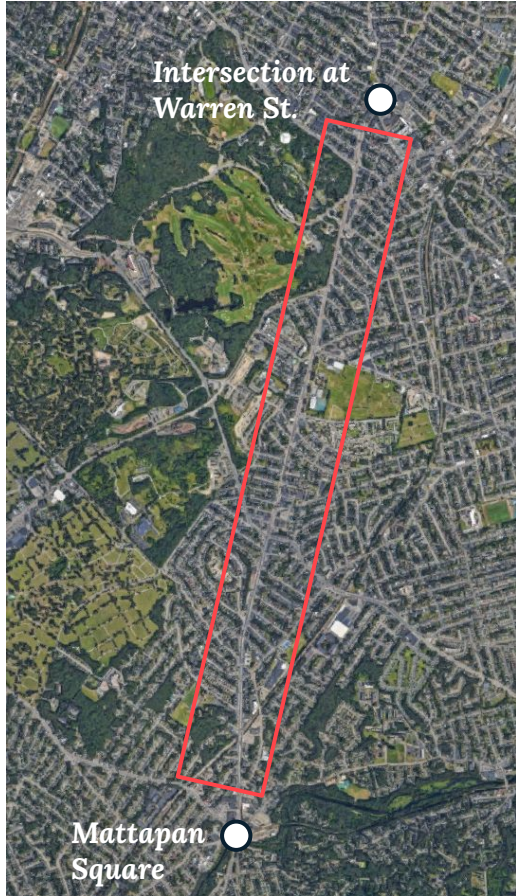


Slide 18

Mobility



PROJECT AREA



Project Extent

- *Blue Hill Avenue: South of the intersection of Warren Street and Blue Hill Ave. at Grove Hall and north of Mattapan Square*

Connecting Projects

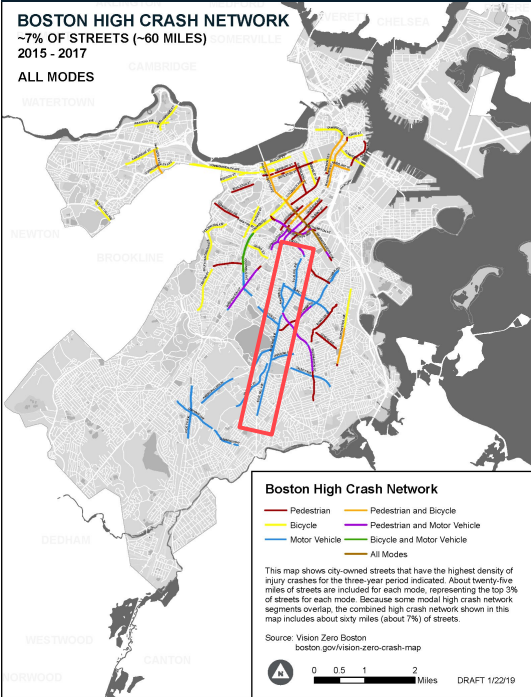
- *BTD is currently leading projects along Warren Street and within Mattapan Square*

PROJECT MOTIVATION

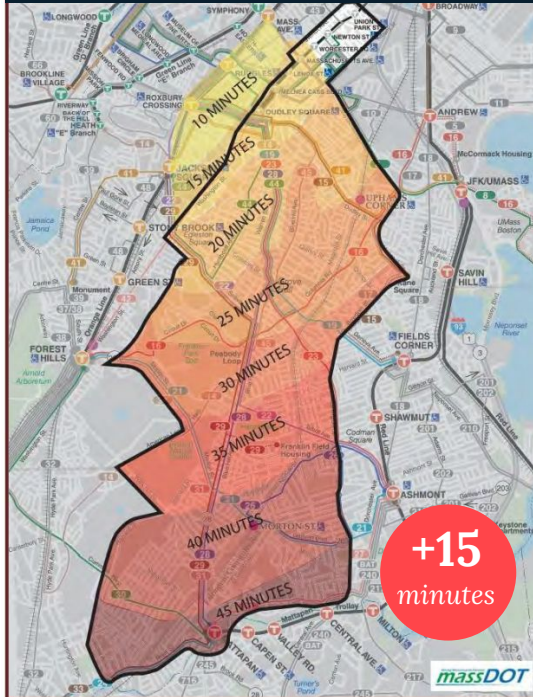
Severe Safety Concerns

BOSTON HIGH CRASH NETWORK
~7% OF STREETS (~60 MILES)
2015 - 2017

ALL MODES



Travel Time Inequities



Community Desire

VISION People's Voice | Boston Today Goals and Targets **ACTION PLAN** People's Voice | Boston in 2030 Projects and Policies

Crosstown

Mattapan to LMA Rapid Bus

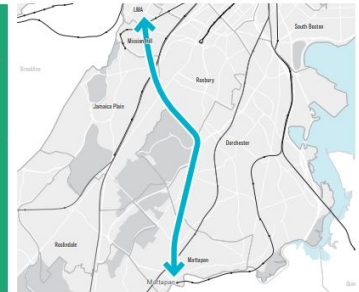
Faster transit connections to the medical district from southern Boston

Project Score

- Access 1
 - Safety 1
 - Reliability
 - Sustainability/Resiliency 1
 - Sustainability/Resiliency 2
 - Governance
 - Access 2
 - Safety 2
 - Affordability
- #19 in weighted Boston-only public voting

Project Description

A new transit line with high-quality stops, signal priority, all-door boarding, and some exclusive lanes will create direct transit connections for residents of Mattapan and southwest Dorchester to jobs and medical care in Roxbury, Mission Hill, and the Longwood Medical and Academic Area. This involves a rail-like bus service operating where excess roadway width exists today on one of several potential corridors that will be determined in conjunction with the community. Service would be high capacity and high frequency and could interline with the JFK/UMass to LMA rapid bus corridor (p176) and even the West Station to LMA connection (p203), connecting together southern Boston, the LMA, and Beacon Yard. Future upgrades could include and structure service initiated as ridership grows.



Implementation

Approximate Cost: \$11 million for design and service, while—depending on the alignment—potentially improving other connections that lead into Dudley Square and Downtown as well. **Construction:** Connections from this part of the city are in high demand, as shown by the ridership rates on “diagonal” routes such as the 29, yet these routes have poor reliability. Poorly served riders, plus many more residents of Dorchester and Mattapan who are not near these diagonal routes today, must either drive—adding to the congested traffic on Mission Street—or ride into Downtown then back out to the LMA on the train. Replacing these lengthy, indirect, and unreliable transit commutes with a high-quality single-seat ride will benefit thousands, improve job access, and also attract new talent riders.

Benefits and Issues Addressed

This investment will support economic opportunity along a corridor with heavy bus ridership but unreliable service, while—depending on the alignment—potentially improving other connections that lead into Dudley Square and Downtown as well. **Construction:** Connections from this part of the city are in high demand, as shown by the ridership rates on “diagonal” routes such as the 29, yet these routes have poor reliability. Poorly served riders, plus many more residents of Dorchester and Mattapan who are not near these diagonal routes today, must either drive—adding to the congested traffic on Mission Street—or ride into Downtown then back out to the LMA on the train. Replacing these lengthy, indirect, and unreliable transit commutes with a high-quality single-seat ride will benefit thousands, improve job access, and also attract new talent riders.

Best Practices

The Cleveland, OH, Healthline has the min frequency during rush hours, 24/7 service, a board fare collection, dedicated BOW with higher speed limits and more information displays, “station” with fare machines, emergency call boxes, and elevated platforms.

www.riders.org/thehealthlinebus

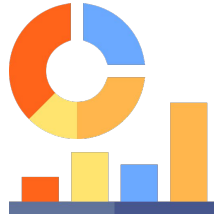


BLUE HILL AVE - BY THE NUMBERS



20,000

Weekday Daily Bus Riders



52%

Portion of peak-period roadway users on buses



25 mins

Peak-period bus riders are experiencing delays of up to 25 minutes in either direction

Go Boston 2030 : Mattapan to LMA

Go Boston 2030 Goals:

- Expand access
- Improve reliability
- Enhance safety

Blue Hill Avenue was selected and voted as a top project in the citywide transportation plan.

Crosstown

Mattapan to LMA Rapid Bus

Faster transit connections to the medical district from southern Boston

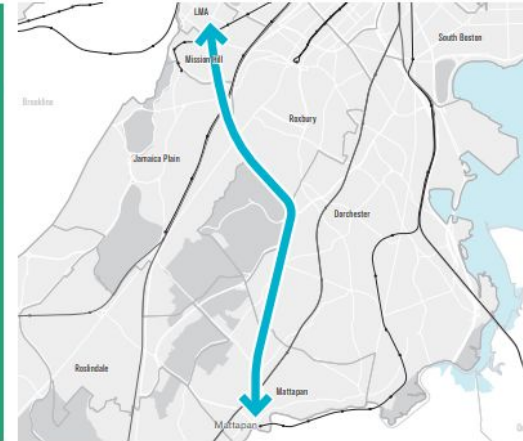
Project Score

- Access 1
- Safety 1
- Reliability
- Sustainability/Resiliency 1
- Sustainability/Resiliency 2
- Governance
- Access 2
- Safety 2
- Affordability
- Affordability

#19 in weighted Boston-only public voting

Project Description

A new transit line with high-quality stops, signal priority, all-door boarding, and some exclusive lanes will create direct transit connections for residents of Mattapan and southwest Dorchester to jobs and medical care in Roxbury, Mission Hill, and the Longwood Medical and Academic Area. This involves a rail-like bus service operating where excess roadway width exists today on one of several potential corridors that will be determined in conjunction with the community. Service would be high capacity and high frequency and could interline with the JFK/UMass to LMA rapid bus corridor (p176) and even the West Station to LMA connection (p203), connecting together southern Boston, the LMA, and Beacon Yards. Future upgrades could see tracks and streetcar service initiated as ridership grows.



Implementation

Approximate Cost: \$55 million for design and construction with vehicle costs to be determined
Potential Funding Sources: City capital budget for design, Boston MPO TIP for roadway construction, and MassDOT/MBTA for vehicle costs
Who's Responsible: BTS and PWD with MassDOT/MBTA
Time Frame: Within 5 to 15 years in conjunction with local community process

Best Practices

The Cleveland, OH, Healthline has five min frequency during rush hours, 24/7 service, off-board fare collection, dedicated ROW with higher speed limits, real time information displays, "stations" with fare machines, emergency call boxes, and elevated platforms.
www.ridertx.com/healthline/about

Benefits and Issues Addressed

This investment will support economic opportunity along a corridor with heavy bus ridership but unreliable service, while—depending on the alignment—potentially improving other connections that lead into Dudley Square and Downtown as well. Crosstown connections from this part of the city are in high demand, as shown by the ridership rates on "diagonal" routes such as the 28, yet these routes have poor reliability. Poorly served riders, plus many more residents of Dorchester and Mattapan who are not near these diagonal routes today, must either drive—adding to the congested traffic on Morton Street—or ride into Downtown then back out to the LMA on the train. Replacing these lengthy, indirect, and unreliable transit commutes with a high-quality single-seat ride will benefit thousands, improve jobs access, and also attract new transit riders.



Public Input

"Transit expansion is critical to the city's continued viability. Our rapid transit needs major expansion of its capacity, both in the downtown core and in many under-served neighborhoods that are among the most transit-dependent sections of the entire metropolitan region (e.g., Washington Street Corridor through Roxbury and continuing through Grove Hall to Mattapan Square) ... indispensable prerequisites to assuring the continued development of Boston by providing the critical infrastructure that can support our growing public transportation system."
 -02119



WHAT WE HAVE HEARD

ENGAGEMENT TO DATE

- *BTD Survey*
- *Livable Streets Study*
- *Two Public Meetings*
- *Civic Association & Stakeholder Meetings*
- *Engagement with Nearby Projects*



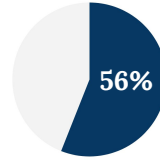
SURVEY FINDINGS

589
responses

71%
locals

Respondents who live in ZIP codes that BHA touches directly

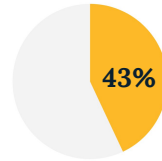
TRANSPORTATION



reported feeling that cars travel too fast along BHA

Double Parking
is a major cause of chaos + congestion

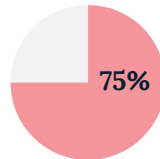
SAFETY



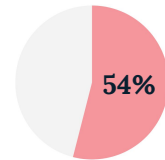
reported being, or knowing someone, in a crash on BHA

Morton Street
Most frequently listed unsafe intersection

PUBLIC REALM



want more trees and greenery along the corridor



want real-time bus arrival displays

LIVABLESTREETS ALLIANCE ENGAGEMENT FINDINGS



7

Engagement
Events

200

Community
Voices

PUBLIC REALM

Most frequently desired enhancements:

1. Real-time Bus Arrival Info. Display
2. Better Street Lighting
3. More Street Art

“I want to see more of my neighborhood’s history along Blue Hill through art.”

TRANSPORTATION

Top challenges to traveling along Blue Hill Avenue:

1. Overcrowded buses
2. Inconvenient weekend bus schedules
3. Unreliable bus service
4. Poor bus etiquette
5. Vehicle traffic/congestions
6. Poor road conditions

Strong desire for bike infrastructure, bus lanes, and for every bus stop along BHA to have a shelter.

All the rules and regulations mean nothing if they are not enforced.

“Nothing would improve my BHA experience more than a lower bus fare.”



EARLY ACTION ITEMS

City Agencies Turning Community Feedback into Action

RELATED TO: SAFETY

43% of survey respondents reported being, or knowing someone, in a crash on BHA

Completed & On-going

- **Speed Feedback Sign Installation**
Southbound on Blue Hill Ave. at Walk Hill
- **Upgrade the BHA-American Legion Intersection**
With new signal equipment, timing changes, and accessible ramps
- **Crosswalk and Bus Stop Restriping**
26 crosswalks, 8 bus stop boxes between Babson South up to Columbia Rd
- **Pedestrian Crossing Retiming at Intersections**
Looking specifically at Seaver, Talbot, Morton, and Columbia

Upcoming



- **Safety Signage Campaign**
Throughout the corridor and neighboring communities
- **Curbside Regulation Changes**
Addressing safety concerns of all modes from parking violations

Completed & On-Going



56% of respondents reported feeling that cars travel too fast along Blue Hill Ave.

- **Speed Feedback Sign Installation**
Southbound on Blue Hill Ave. at Walk Hill
- **Crosswalk and Bus Stop Enhancements**
Throughout the corridor and neighboring communities
- **Activation of Transit Signal Priority**
At every capable major intersection along Blue Hill Ave.
- **Bike Box**
At the intersection of Warren Street and Blue Hill Ave.
- **Curbside Regulation Changes**
To better serve current curb uses and minimize double parking

Upcoming

Completed & On-going



- **New Benches**
Introduced to Mattapan Square and along the corridor
- **Expand the City's PaintBox Program**
Hired local artists to paint city utility boxes along Blue Hill Ave
- **Replace the Banners**
Along the median in Mattapan Square
- **Sidewalk Murals**
In front of the Grove Hall and Mattapan Libraries
- **Replace Existing Trash Cans**
Along the corridor with cans that have lids and recycling containers
- **Continue to expand the City's PaintBox Program**
Finish through the Fall to get all of the utility boxes painted
- **Murals in publicly visible locations**
Add to the variety of visual experience and art along the corridor

Upcoming

PAINTBOX PROGRAM

The Boston Transportation Department worked with local artists of color this summer to paint utility boxes with unique designs along Blue Hill Ave
The boxes are located throughout the corridor from Mattapan Sq to Grove Hall

BTD will continue to expand the City's PaintBox program

Finish through the Fall to get all of the utility boxes painted, working with the Arts and Culture Department to identify additional locations for other painted boxes on other major streets





Slide 32 **Mushen Kieta**



Wilton Tejeda



Gary Chen





Ananda Toulon



Mattaya Fitts



GROVE HALL MURAL - SEEKING ARTISTS

Murals in publicly visible locations

The Transportation Dept is currently looking for muralists to paint a large mural adjacent to the plaza in Grove Hall (by Flames and the municipal parking lot). For inquiries or if you are an artist, visit boston.gov/blue-hill-ave or email jacob.wessel@boston.gov

Location:



Nearby examples:



An aerial photograph of a city street, likely in Boston, showing a mix of residential and commercial buildings, trees, and a wide road with a median. The image is used as a background for the slide.

B

CITY of BOSTON

LONG-TERM VISION

Design Considerations by Transportation Mode

Slide 35

OVERVIEW



- *Prioritizing public and active transportation where it is needed the most*
- *Providing safe, inclusive connections*
- *Modernizing an underserved corridor*
- *Committed to designing for multimodalism and based on community concerns*

VISION: BUS

54% of survey respondents desire real-time bus arrival information along the corridor

- **Reliable, Efficient Service**
- Off-board Fare Collection
- Real-time Bus Info. Display
- Shelter Protection
- Bus Signal Priority
- Maximum Bus Travel Time Savings from Center-Running



25

minutes

Rush hour bus travel time between Mattapan Station and Nubian Square



422

parking spots

Amount of parking maintain between Babson in the south and Warren in the north



SELF-

enforcing

Due to the location of the bus lanes away from the parking lane, this concept is less plagued by double-parking and is largely self-enforcing.

VISION: BICYCLE



- **Consistent, Protected Bicycle Connection**
- **Bicycle Signal Priority**
- **Physically separated from Car Travel & Parking**
- **Easily Legible with Clear Signage and Green Lane Markings**

VISION: TREES



**Median Beautification
Concept**

3 out of 4 survey respondents want a greener BHA.

Additional planting will be explored at remaining medians and sidewalk locations



**All Street Trees
Protected**

Payette, Greater Grove Hall Main Streets



VISION: PUBLIC SPACE



“I want to see more of my neighborhood’s history along Blue Hill through art.”

- *BHA doubles as a critical traffic corridor and a public art gallery*
- *Public realm serves all and represents the community’s identity*
- *Urban tree canopy is maintained and expanded to elevate local air quality and improve experiential quality along the roadway*

Main Drivers: Safety, Accessibility, Artistic Representation, Green Space

VISION: PARKING

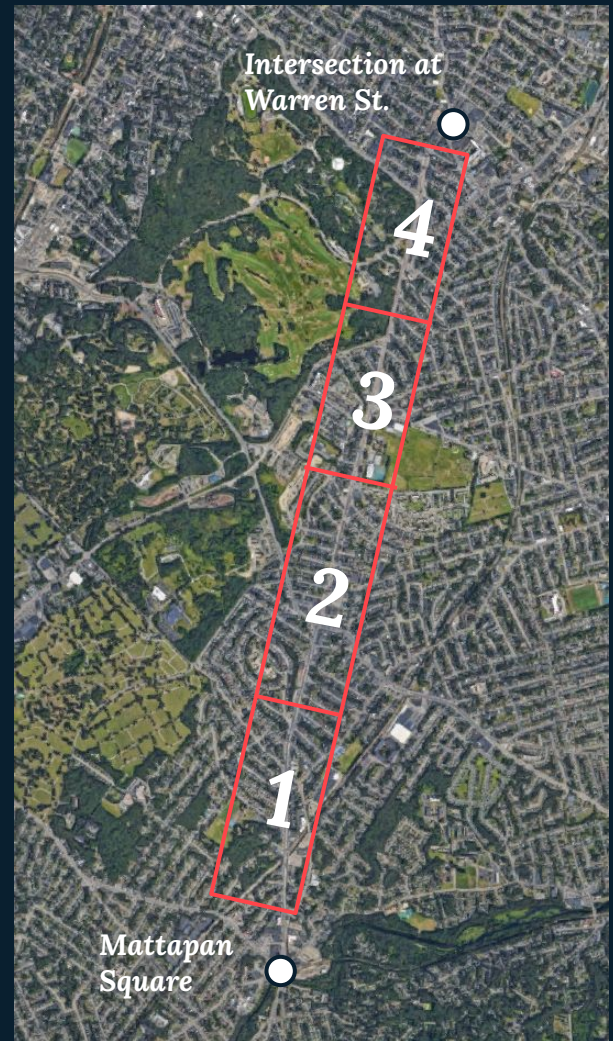


Survey respondents listed double parking is a major cause of chaos and congestion

- Approximately 2 out of 3 parking spots are maintained on Blue Hill Ave in this draft plan
- Existing curb-uses will be examined to *reallocate spaces* to residents, businesses and customers where it is needed most
- Parking regulations to include resident spaces, commercial loading and pick-up/drop-off to *reduce double parking instances* and other violations

ROLL PLAN SEGMENTS

- 1 Babson St South to Evelyn St
- 2 Evelyn St to Donald Rd
- 3 Donald Rd to Charlotte St
- 4 Charlotte St to Warren St





NEXT STEPS

DESIGN PROCESS



- **Initial Design Phase**
Progressing from concept to initial design
- **Integrate Community Voices**
Your feedback informing design considerations
- **Advance to Final Design by Early 2021**
A community-centered design process supported by robust interagency review to create a finished product

FUNDING



- **City Capital Funding**
We have dedicated funding for this effort and will prioritize this project in budget processes moving forward
- **MBTA Coordination**
Prioritizing funding towards this project
- **Other Funding Sources**
We will be exploring funding options from other sources such as the federal government
- **Pushing Forward**
Advancing this project to be shovel-ready for rapid implementation once funds are allocated

HOW CAN I GET INVOLVED?



- **Post-Meeting Survey**
Share more detailed comments and spread the survey through your community!
- **Office Hours**
Come chat 1-on-1 with the Transit Team in-person and virtually, starting next week!
- **Other Methods?**
If you have suggestions on other ways to involve your community, leave your thoughts in the post-meeting survey!

OFFICE HOURS – COME CHAT WITH US!

Here are other opportunities to engage with the Transit Team on Blue Hill Ave



In-Person

Virtual

1

Date: Thursday, October 1
Time: 12:00 PM – 2:00 PM
Place: Grove Hall Library Branch,

3

Date: Tuesday, October 6
Time: 12:00 PM – 2:00 PM
Place: Zoom

2

Date: Wednesday, October 7
Time: 4:00 PM – 6:00 PM
Place: Mattapan Municipal Lot #14
Corner of Cummings Highway
and Fairway St

4

Date: Tuesday, October 6
Time: 5:00 PM – 7:00 PM
Place: Zoom

Registration information for these events can be found on the project page: boston.gov/blue-hill-avenue



QUESTIONS & DISCUSSION

Matthew Moran, Transit Director
matthew.moran@boston.gov

Slide 48

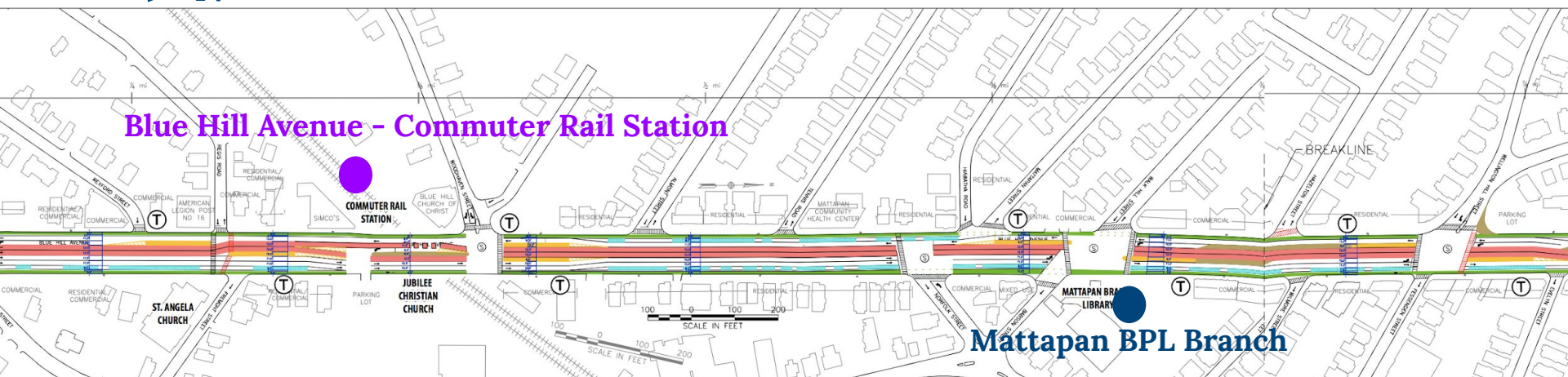
1

CONCEPT ROLL PLAN

Babson St South to Evelyn St

N

Blue Hill Avenue - Commuter Rail Station



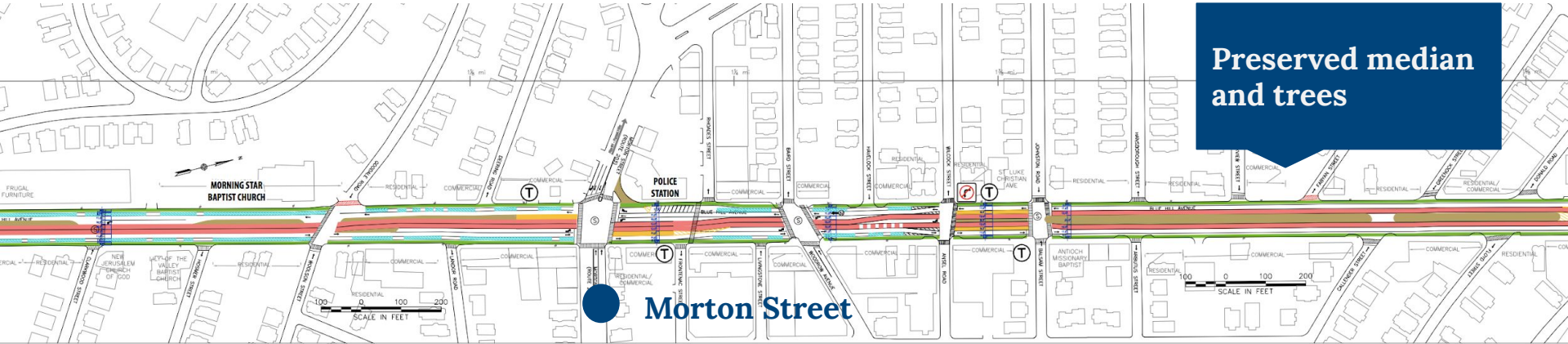
Mattapan BPL Branch

-  Proposed Buffered Bike Lane
-  Proposed Bus Lane
-  Parking Spaces
-  Median
-  Proposed Bus Stops
-  New Crosswalk



2 CONCEPT ROLL PLAN

Evelyn St to Donald Rd



Preserved median and trees

-  Proposed Buffered Bike Lane
-  Proposed Bus Stops
-  Proposed Bus Lane
-   New Crosswalk
-  Parking Spaces
-  Median



3 CONCEPT ROLL PLAN

Donald Rd to Charlotte St



American Legion Highway

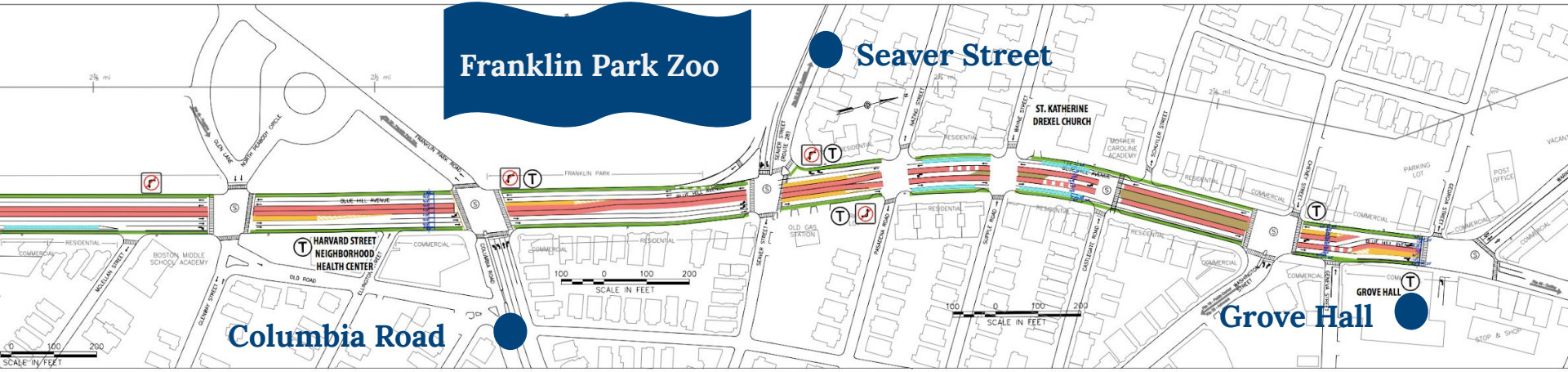


-  Proposed Buffered Bike Lane
-  Proposed Bus Lane
-  Parking Spaces
-  Median
-  Proposed Bus Stops
-  New Crosswalk



4 CONCEPT ROLL PLAN

Charlotte St to Warren St



- Proposed Buffered Bike Lane
- Proposed Bus Lane
- Parking Spaces
- Median
- T Proposed Bus Stops
- New Crosswalk

