



CITY of BOSTON
Mayor Michelle Wu







EX

BOSTON City Hall
DIRECTORY
3

For more content & background,
read the handbook at www.kumpreystreetstudios.com

KUMPREYS STREET STUDIOS
BOSTON, MA









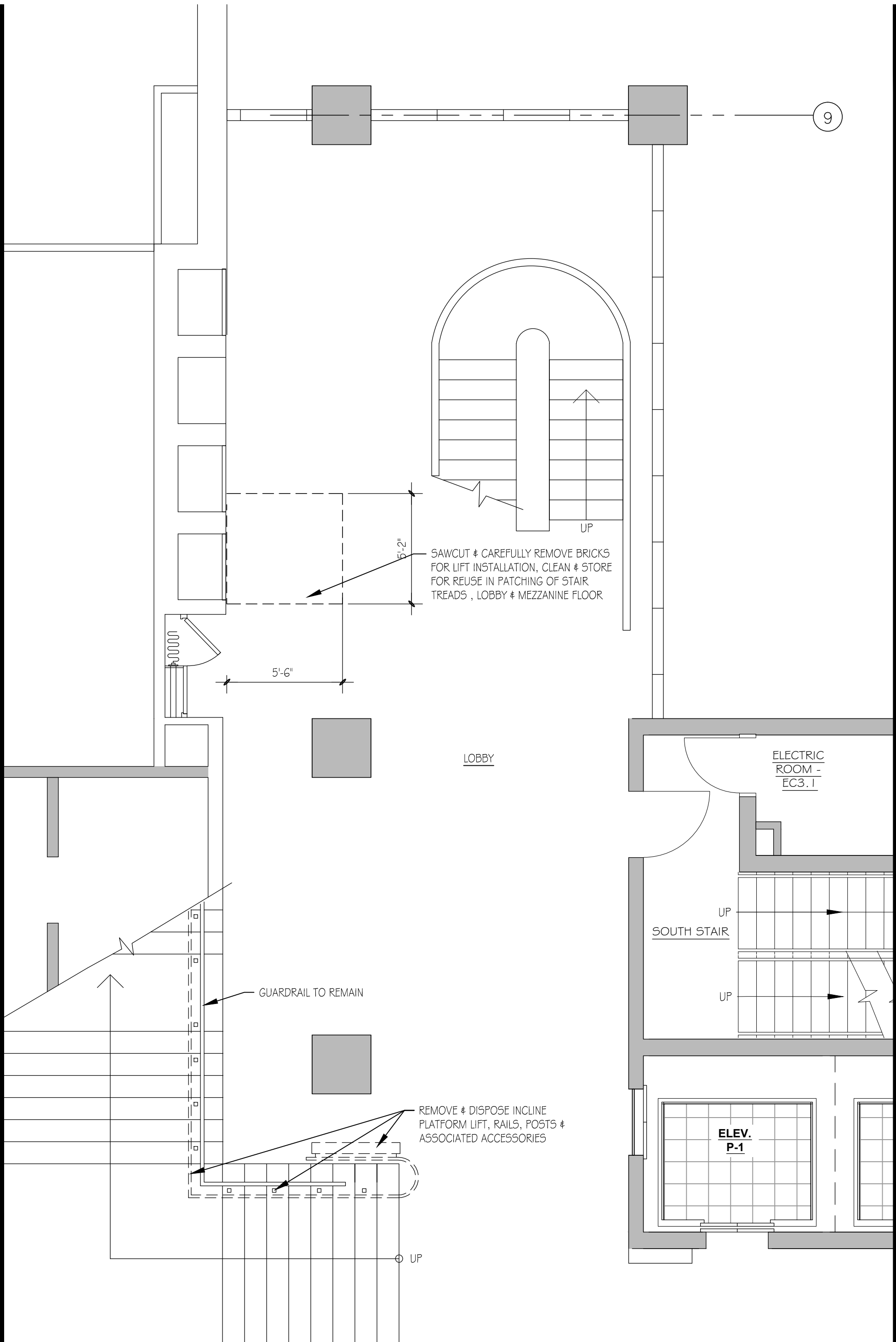
CITY of BOSTON

PUBLIC LACTATION ROOM

*A comfortable and clean space for
pumping and breastfeeding*



mamava
Privacy for pumping
or breastfeeding



DRAWING NO.

SKA-2

DATE: **02/24/2022**
~~03-17-2022~~

SCALE: **1/4"=1'-0"**

DRAWN: **JET**

CHECKED: **KMS**

CITY HALL ELEVATOR UPGRADES, BOSTON MA

**NEW VERTICAL LIFT
PARTIAL 3RD FLOOR DEMO PLAN**

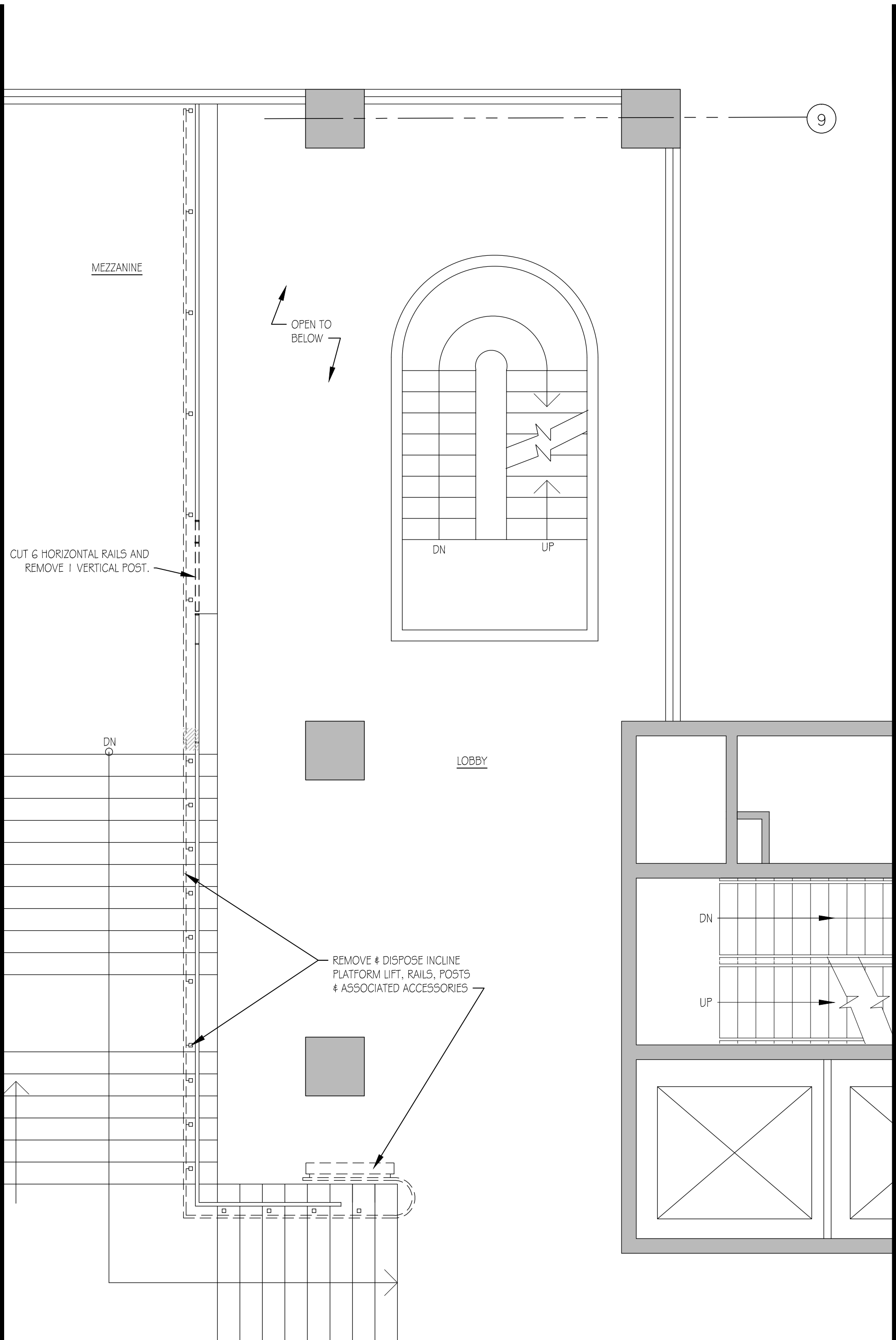
CSS ARCHITECTS INC.



107 Audubon Road
Building 2, Suite 300
Wakefield, MA 01880

REVISIONS

NO.	DESCRIPTION	DATE



DRAWING NO.

SKA-3

DATE: **02/24/2022**

SCALE: **1/4"=1'-0"**

DRAWN: **JET**

CHECKED: **KMS**

CITY HALL ELEVATOR UPGRADES, BOSTON MA

**NEW VERTICAL LIFT
PARTIAL 4TH FLOOR DEMO PLAN**

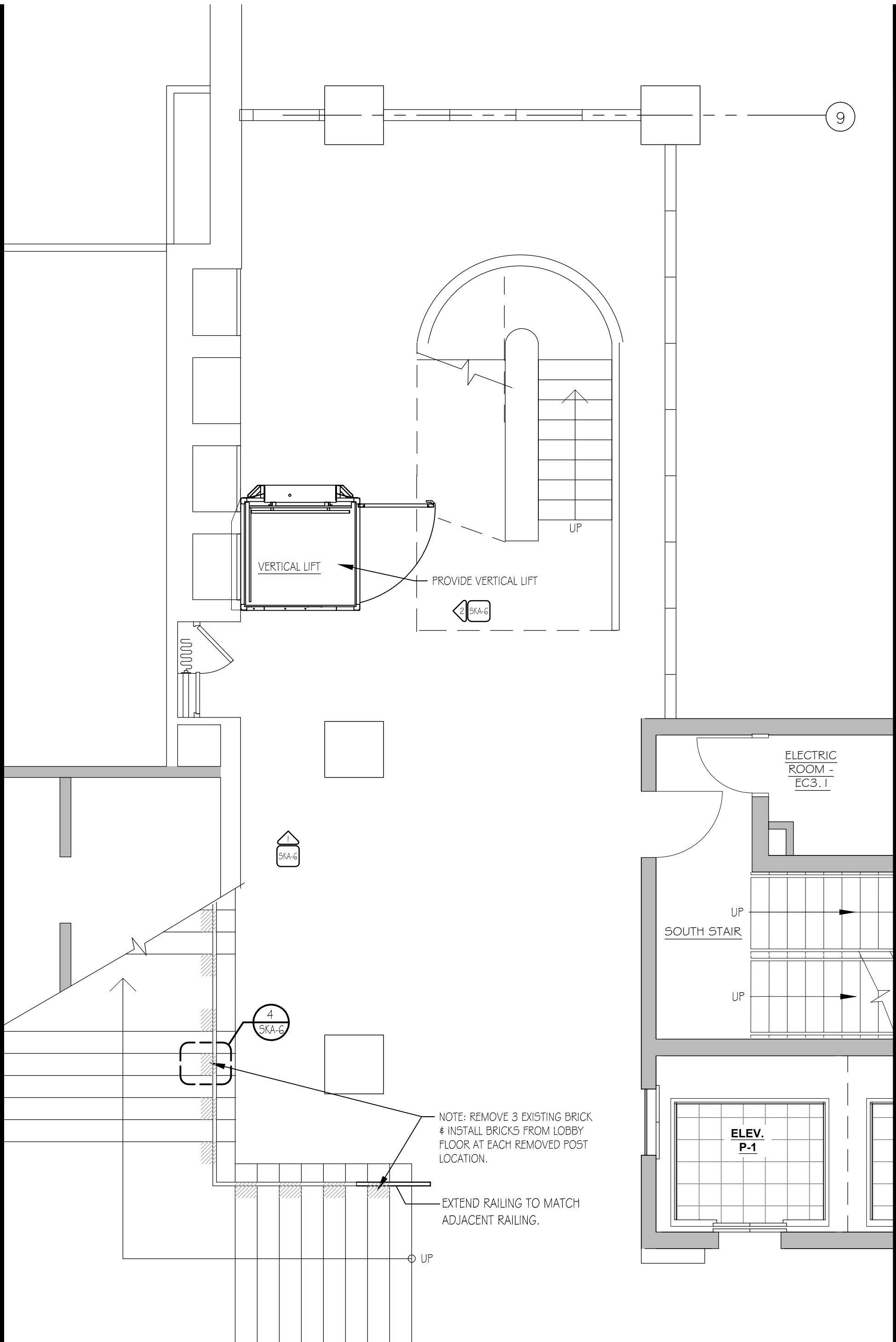
CSS ARCHITECTS INC.



107 Audubon Road
Building 2, Suite 300
Wakefield, MA 01880

REVISIONS

NO.	DESCRIPTION	DATE



DRAWING NO.

SKA-4

DATE: 02/24/2022
03/17/2022

SCALE: 1/4"=1'-0"

DRAWN: JET

CHECKED: KMS

CITY HALL ELEVATOR UPGRADES, BOSTON MA

NEW VERTICAL LIFT
PARTIAL 3RD FLOOR NEW WORK PLAN

CSS ARCHITECTS INC.



107 Audubon Road
Building 2, Suite 300
Wakefield, MA 01880

REVISIONS

NO.	DESCRIPTION	DATE

NOTE: REMOVE 3 EXISTING BRICK & INSTALL BRICKS FROM LOBBY FLOOR AT EACH REMOVED POST LOCATION

PROVIDE NEW POSTS AT REMOVED SECTIONS MATCH EXISTING POSTS. ALIGN WITH EDGE OF LIFT

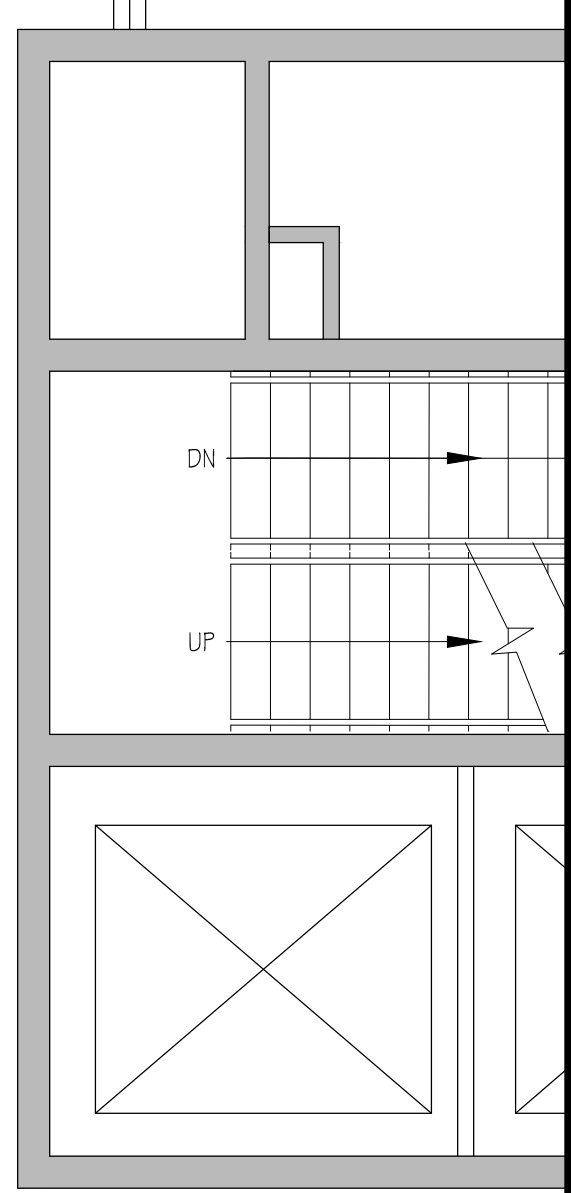
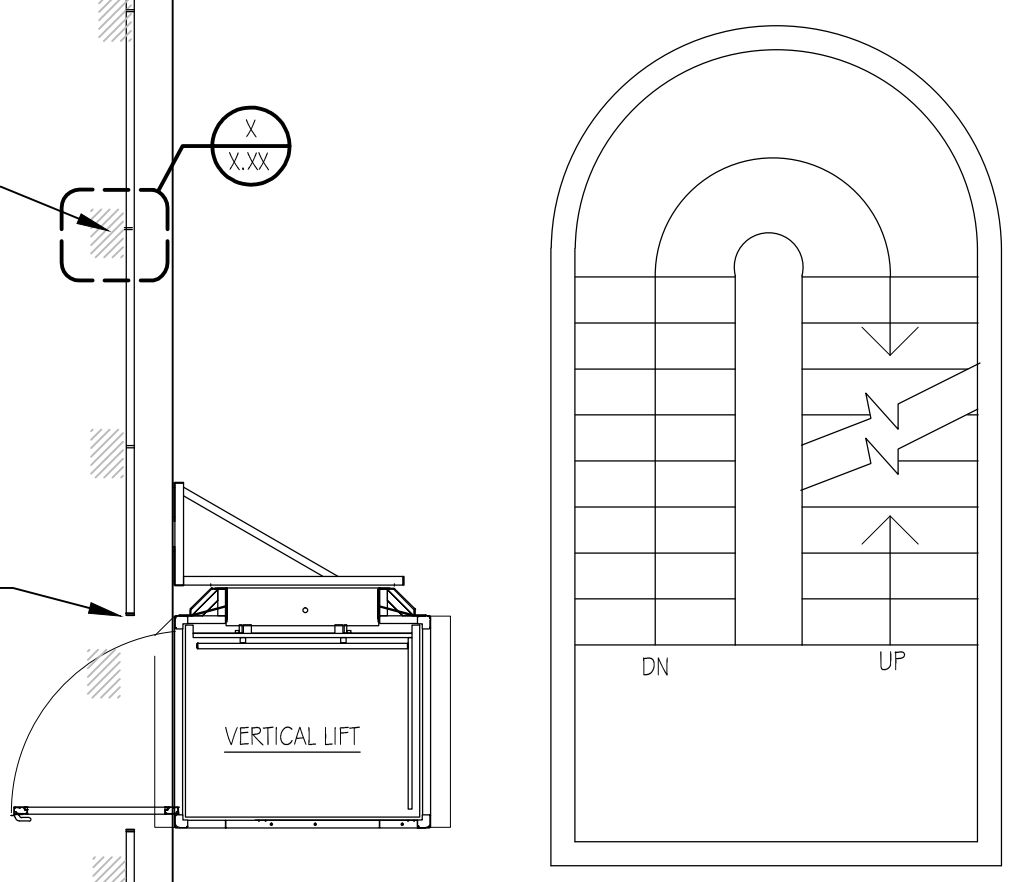
SKA-6 3

2 SKA-6

4 SKA-6

1 SKA-6

NOTE: REMOVE 3 EXISTING BRICK & INSTALL BRICKS FROM LOBBY FLOOR AT EACH REMOVED POST LOCATION



DRAWING NO.
SKA-5

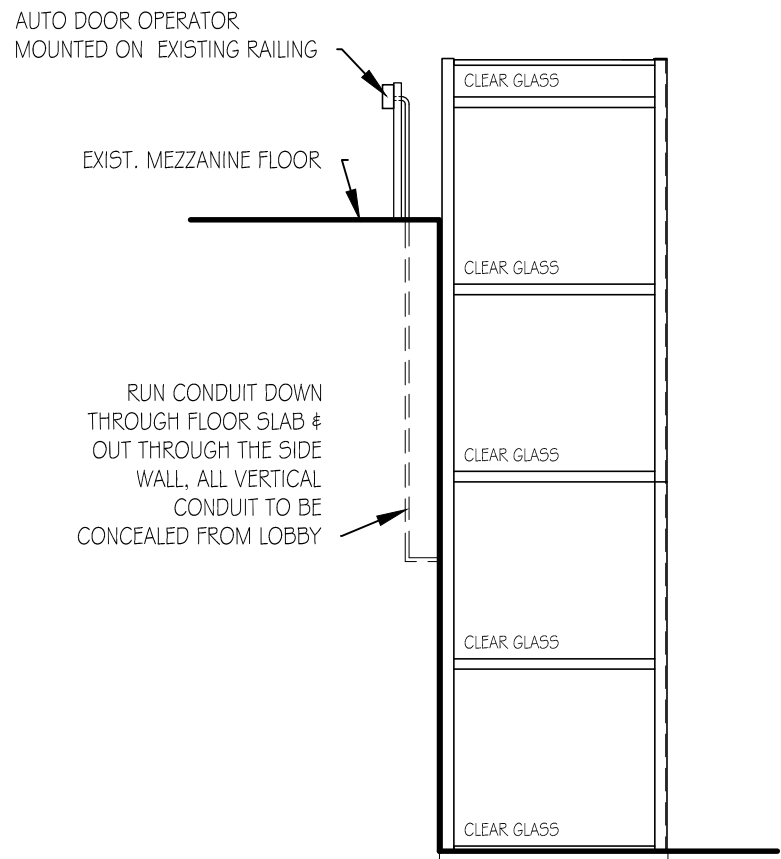
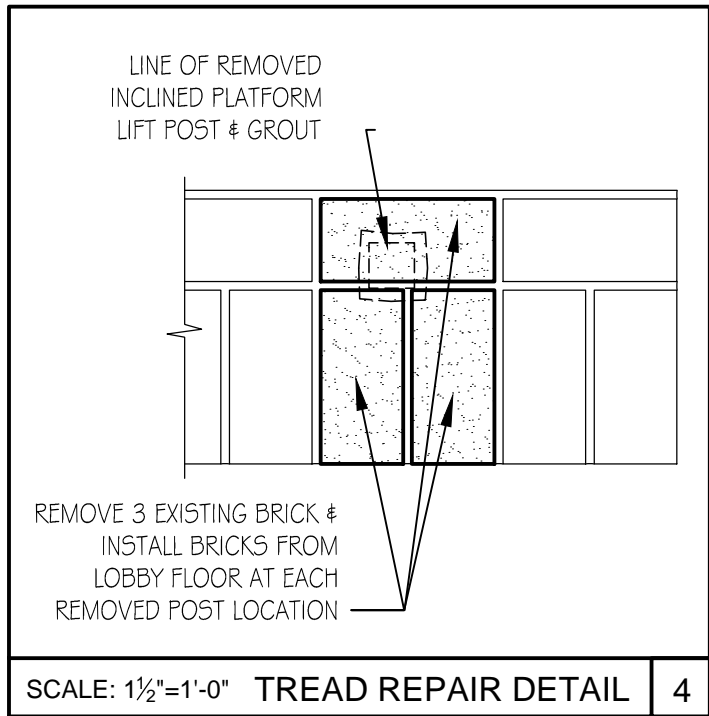
DATE: 02/24/2022
03/17/2022
SCALE: 1/4"=1'-0"
DRAWN: JET
CHECKED: KMS

CITY HALL ELEVATOR UPGRADES, BOSTON MA

NEW VERTICAL LIFT
PARTIAL 4TH FLOOR NEW WORK PLAN

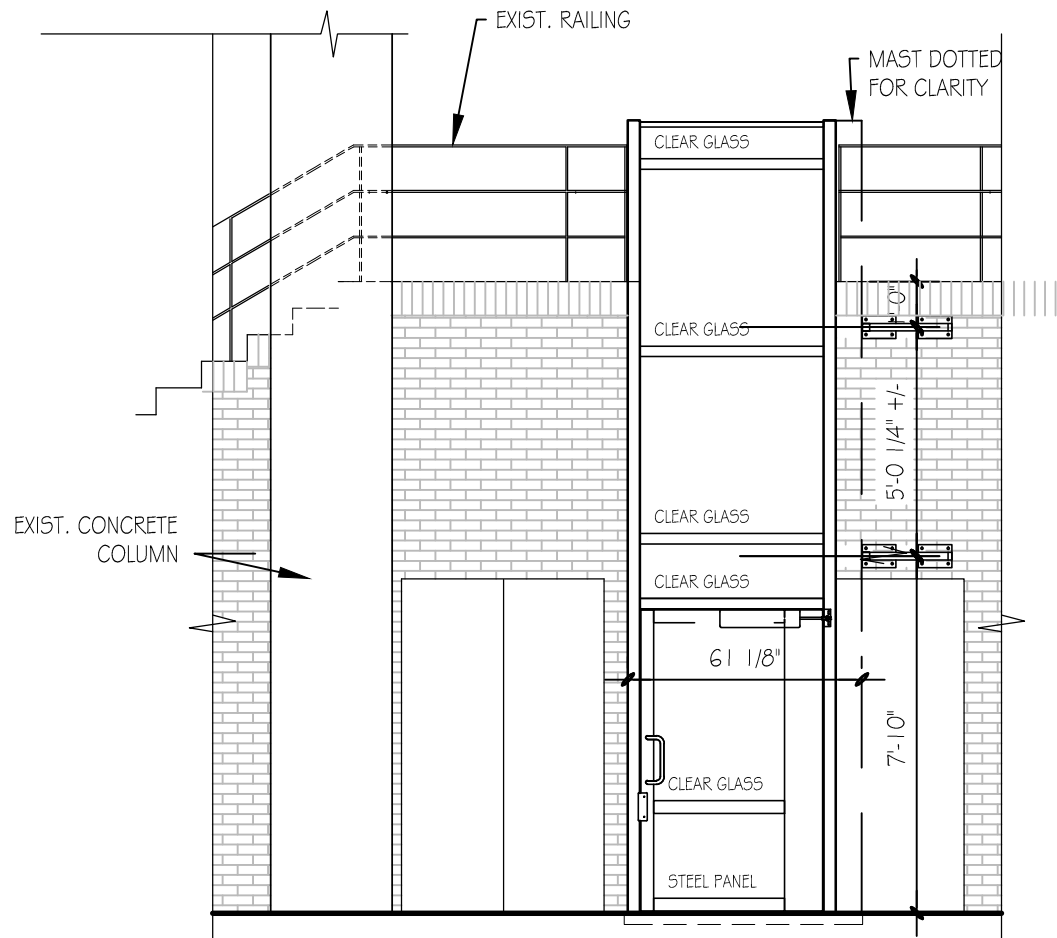
CSS ARCHITECTS INC.
107 Audubon Road
Building 2, Suite 300
Wakefield, MA 01880

REVISIONS		
NO.	DESCRIPTION	DATE



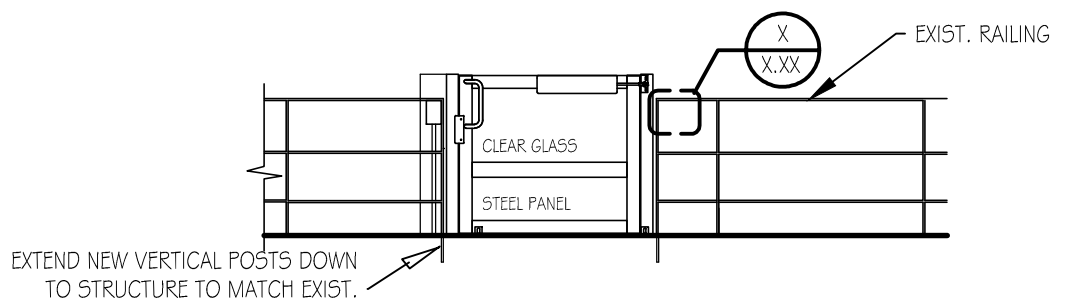
3RD FLOOR LOBBY SIDE ELEVATION 1

SCALE: 1/4" = 1'-0"



3RD FLOOR LOBBY FRONT ELEVATION 2

SCALE: 1/4" = 1'-0"



MEZZANINE ELEVATION 3

SCALE: 1/4" = 1'-0"

DRAWING NO.

SKA-6

DATE: 02/24/2022

03/17/2022

SCALE: AS NOTED

DRAWN: JET

CHECKED: KMS

CITY HALL ELEVATOR UPGRADES, BOSTON MA

NEW VERTICAL LIFT ELEVATIONS

CSS ARCHITECTS INC.

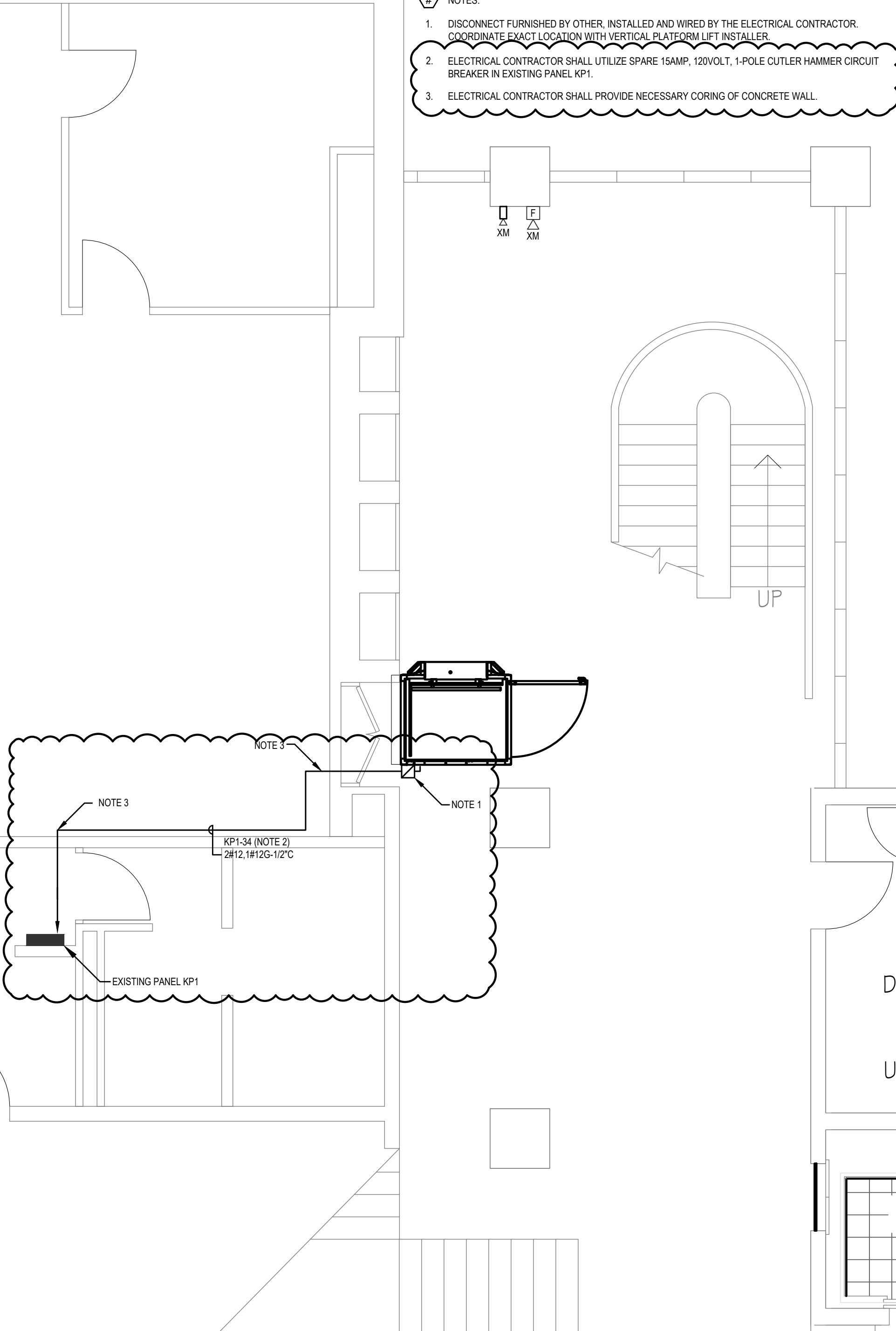
107 Audubon Road
Building 2, Suite 300
Wakefield, MA 01880



REVISIONS		
NO.	DESCRIPTION	DATE

NOTES:

1. DISCONNECT FURNISHED BY OTHER, INSTALLED AND WIRED BY THE ELECTRICAL CONTRACTOR. COORDINATE EXACT LOCATION WITH VERTICAL PLATFORM LIFT INSTALLER.
2. ELECTRICAL CONTRACTOR SHALL UTILIZE SPARE 15AMP, 120VOLT, 1-POLE CUTLER HAMMER CIRCUIT BREAKER IN EXISTING PANEL KP1.
3. ELECTRICAL CONTRACTOR SHALL PROVIDE NECESSARY CORING OF CONCRETE WALL.



DRAWING NO.
SKE-1

DATE: **3.7.22**
 SCALE: **1/4"=1'-0"**
 DRAWN: **BC**
 CHECKED: **JCP**

CITY HALL ELEVATOR UPGRADES, BOSTON MA

PARTIAL 3RD FLOOR PLAN - ELECTRICAL

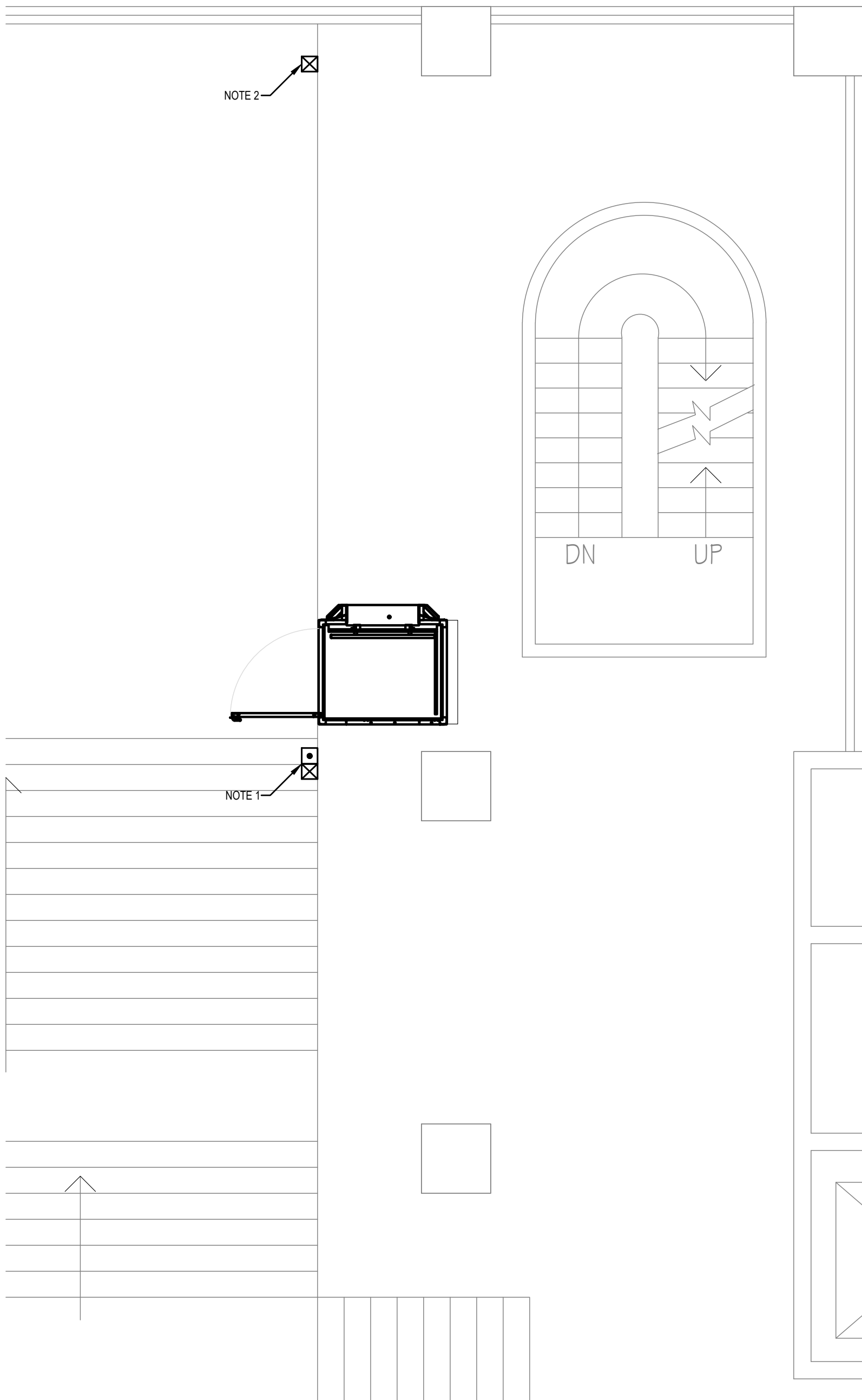
CSS ARCHITECTS INCORPORATED
 107 Audubon Road
 Building Two, Suite 300
 Wakefield, MA 01880

REVISIONS		
NO.	DESCRIPTION	DATE



NOTES:

1. EXISTING LIFT CONTROLLER TO BE REMOVED BY OTHERS. ELECTRICAL CONTRACTOR TO DISCONNECT/MAKE SAFE AND REMOVE BRANCH CIRCUITRY BACK TO POWER SOURCE.
2. EXISTING GARAVENTA VERTICAL LIFT CONTROLLER TO BE REMOVED BY OTHERS. E.C. TO DISCONNECT/MAKE SAFE AND REMOVE BRANCH CIRCUITRY BACK TO POWER SOURCE.



DRAWING NO.

SKE-2

DATE: 3.7.22
 SCALE: 1/4"=1'-0"
 DRAWN: BC
 CHECKED: JCP

CITY HALL ELEVATOR UPGRADES, BOSTON MA

PARTIAL 4TH FLOOR PLAN - ELECTRICAL

CSS ARCHITECTS INCORPORATED
 107 Audubon Road
 Building Two, Suite 300
 Wakefield, MA 01880

REVISIONS

NO.	DESCRIPTION	DATE



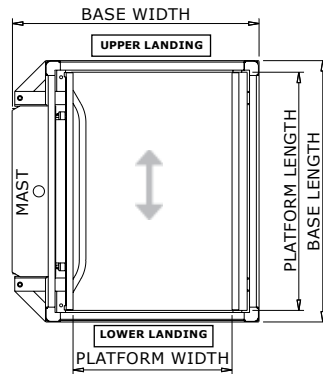
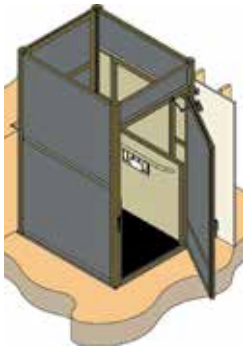


Genesis

Enclosure Model Vertical Platform Lift

Dimensions

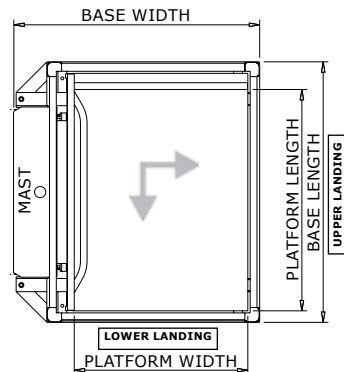
Genesis Enclosure Model - Includes a factory enclosure and integrated doors or gates.



Enclosure Straight Through

Platform Size	Base Width	Base Length	Platform Width	Platform Length
Standard	1399mm 55 1/8"	1505mm 59 1/4"	947mm 37 1/4"	1370mm 53 7/8"
Mid-Size	1399mm 55 1/8"	1656mm 65 1/8"	947mm 37 1/4"	1370mm 53 7/8"
42 x 60	1522mm 59 7/8"	1660mm 65 3/8"	1067mm 42"	1524mm 60"
Large	1551mm 61 1/8"	1656mm 65 1/8"	1099mm 43 1/4"	1520mm 59 7/8"

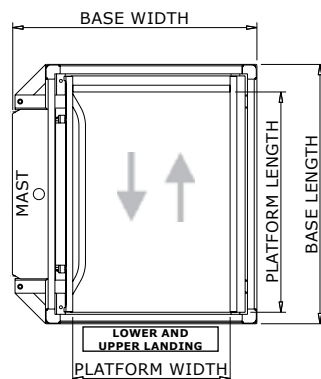
Enclosure 90° Entry / Exit



Platform Size	Base Width	Base Length	Platform Width	Platform Length
Standard	1399mm 55 1/8"	1505mm 59 1/4"	1017mm 40"	1295mm 51"
Mid-Size	1399mm 55 1/8"	1656mm 65 1/8"	947mm 37 1/4"	1370mm 53 7/8"
42 x 60	1452mm 57 1/8"	1734mm 68 1/4"	1057mm 42"	1524mm 60"
Large	1551mm 61 1/8"	1656mm 65 1/8"	1099mm 43 1/4"	1520mm 59 7/8"

Enclosure On/Off Same Side

ADJACENT
TO MAST
ENTRY /



Platform Size	Base Width	Base Length	Platform Width	Platform Length
Standard	1399mm 55 1/8"	1505mm 59 1/4"	947mm 37 1/4"	1295mm 51"
Mid-Size	1399mm 55 1/8"	1656mm 65 1/8"	947mm 37 1/4"	1446mm 56 7/8"
42 x 60 adjacent to mast	1522mm 59 7/8"	1734mm 68 1/4"	1067mm 42"	1524mm 60"
42 x 60 opposite to mast	1452mm 57 1/8"	1808mm 71 1/8"	1067mm 42"	1524mm 60"
Large	1551mm 61 1/8"	1656mm 65 1/8"	1099mm 43 1/4"	1446mm 56 7/8"

- 42 x 60 platforms meet the A18.1 requirements for maximum allowable clear platform space at 750 lbs.

Specifications

Rated Load: Standard 750 lbs (340 kg) with a safety factor of 5

Speed: Leadscrew - 3 meters (10 ft) per minute at full load | Hydraulic - 5.2 meters (17 ft) per minute at full load

Travel Range: Leadscrew - up to 12 feet | Hydraulic - up to 14 feet

Safety Features: Garaventa doors and gates equipped with Garaventa interlocks and internal closers | Sturdy 16 gauge galvanized steel platform side walls 1070mm (42 1/8") | Continuous pressure directional control switches and illuminated and audible emergency stop switch | Full length grab rail on platform side wall panel

Leadscrew Drive System: Motor: 2 HP (1750 RPM) | Motor Drive Type: ACME screw (1" diameter) | Mains Supply: North American Models: 120 VAC on a dedicated 20 amp circuit, International Models: 208-240 VAC on a dedicated 16 amp circuit

Hydraulic Drive System: Motor: 3 HP DC (2.2 KW) complete with auxiliary power system | Motor Drive Type: Chained Hydraulic (Dual 5/8" ANSI 50 chains) | Mains Supply: North American Models 120 VAC on a dedicated 15 amp circuit, International Models 208-240 VAC on a dedicated 16 amp circuit

Controls: Keyless Controls (No key required for call stations and platform controls) | Directional Controls - Continuous pressure switches | Control Voltage: 24 VDC

Power Requirements: 120 VAC single phase | Optional 208-240 VAC single phase

Popular Options: Power Door Operators (ANSI/ BHMA A156.19 compliant) | Custom platform sizes available | Illuminated and tactile constant pressure directional buttons | Arrival gong and digital floor display | Steel, plexiglas or glass enclosure panels | Choice of RAL colors | Autodialer phone (ADA compliant) | Keyed operation | Custom applications (Consult Garaventa Lift) | Battery powered emergency lowering (Leadscrew drive only) | Full time battery operation ***suitable for low use applications ONLY (Hydraulic drive) | Fan and ventilation system with thermostatic controls - requires continuous mains power

Warranty: 24 months standard warranty | Optional warranty extension of 12 months (36 months total) or 60 months (84 months total)
