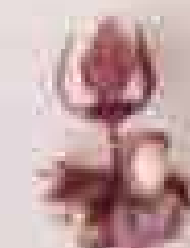




Zip Run is a state-of-the-art e-commerce platform for both delivery and pickup for cannabis products.



TEAM



Gabriel Vieira

*Chief Executive Officer
Social Equity Member
Management Consultant
experience at a Big 4 Firm*



Christian Nicholson

*Chief Operating Officer
Veteran App Designer that
completed over 250K worth
of App Development from
2018-2019
CEO/Lead UX Designer
of EchoMe Inc.*



Elis Omoroghomwan

*Chief Growth Officer
Founder/Lead Marketer of
Black Monarch
Financial Analyst
experience at State Street*



Michael Gordon

*Chief Technology Officer
Senior iOS mobile app
engineer experience at
Maven Clinic*



Doug Wigginton

*Principle Web Developer
Senior Web Developer
at TripAdvisor*

Mission & Vision Statement



Mission Statement:

At Zip Run, our mission is to employ, empower, and enlighten our local communities. We believe in making cannabis consumption more accessible and straightforward for everyone while shaping the delivery and pickup market together.

Vision Statement:

We aim to become a viable technology company that can compete with delivery and pickup services. Our vision is to support people from disproportionate areas in Massachusetts & beyond to prevent the continuation of an inequitable status quo by teaching the importance of ownership while providing job opportunities within a wide variety of fields and career paths.

Facility Overview

- No Retail or Cultivation at 1170. Product is only delivered from our warehouse.
- All vehicles will access 1170 underneath the bridge to and from the site.
- 10 vehicles will be used to deliver product and our drivers go back and forth to the site on a 2 hour basis. Our business hours are from 10am - 10pm.
- No Odor (all products will be in sealed containers.)
- Lighting (Any Additional lighting if any, that is required, will be provided by **DARK SKY type fixtures** meaning that the illumination will be directed downward so there is no "City Lights" effect. New illumination if required will not spread beyond the property.
- Plenty of on-site parking for our drivers

Facility Overview

- **Security** Our Security Consultant is Clint Wynne of Wynne & Associates. Clint has been in the security business since 1989 and has been involved in cannabis security since 2006 when he helped develop the Medical Marijuana Security Protocols for the Rhode Island Department of Health.

Since then, Clint has been involved in the security design and installation of over 50 marijuana cultivation, manufacturing, and dispensary facilities in the US. His firm will review our policies and procedures for security and will design and manage the installation of all electronic security systems required by the Cannabis Control Commission and all the regulations in 935 CMR 500.110.

This design will include Video Surveillance, Intrusion Alarms, Panic alarms, and Access Control Systems that will all meet or exceed the regulations. This design will be reviewed and approved by the Dorchester Police Department to ensure compliance and that any local security requirements are also met.

Diversity & Inclusion Plan



Employment

- We are prioritizing driver applications of diverse backgrounds. Our goal is to increase diversity in the legal cannabis industry in Massachusetts.
- A minimum of 50% of managers and employees will come from disproportionately impacted Boston neighborhoods.

Zip Run Executives

- As currently constructed, 50% of Zip Run's executive positions are held by individuals from diverse backgrounds.

Executive Diversity Policy

- Zip Run promotes a policy that increases awareness of the need to recruit people from diverse backgrounds within our top-level executive positions.
- As we expand our business, Zip Run will continue to prioritize recruiting candidates from diverse backgrounds.

Employee Resource Group (ERG)

- Employee Resource Group (ERG): Zip Run will sponsor an employee resource group within our organization centered around diversity and inclusion.
- To create an employee network united around a common goal: providing Zip Run with their unique perspectives on advancing awareness around diversity and inclusion.

Community Assistance

- Two workshops will be held annually to assist the Boston community with career development, including resume and interview tips for entering the cannabis industry or other professions.

Employment Plan



25 Estimated Employees

- 50% of Managers and Employees will be hired from disproportionately impacted communities.
- 50% of employees shall identify as minorities, women, persons with disabilities, immigrants, and LGBTQ+ individuals.
- In response to cannabis prohibition, Zip Run will prioritize hiring people with convictions.

Wages and Benefits

- \$15/hr Starting Pay
- Full Health Benefits / Coverage
- Paid Time Off
- Career Training (Retail, HR, Security, Finance)



Community Support



Reducing Barriers

Prioritize the hiring of individuals from disenfranchised communities in the state of Massachusetts to reduce barriers to entry into the adult-use cannabis sector. Zip Run will enforce a policy that requires at least 25% of our employed drivers to be from disproportionately impacted areas.

Providing Mentoring, Professional and Technical Services

Provide cannabis education, industry-specific technical training, and mentoring services for individuals facing systemic barriers.

Non-Profit Support

Provide support to non-profit organizations aligned with Zip Run's community goals and inclusiveness. We will do this by providing donations and community service hours.

Providing Grants

Zip Run will give capital to individuals from disenfranchised communities in Suffolk County that have aspirations to impact them and their surroundings positively.

Elected Officials / Port Norfolk Civic Association

We have received a letter from Councilor Baker's office of non-opposition, and 3 additional letters of support from community members. As we move forward, a member of our executive team will be attending as many meetings of the Port Norfolk Civic Association as possible. Additionally, we will be supporting non-profit organizations in the community.

Security Plan Vehicles



- Zip Run is equipping all personnel and vehicles with necessary real-time tracking and surveillance tools. We are teaming up with a fleet management industry leader, GPSTrackit, to track in real-time all of our cars and drivers in operation. The system includes the following:
 - GPS Hardware Monitoring Device
 - Four Cameras (w/ color and timestamps embedded)
 - Dedicated personnel overseeing the operations from Zip Run's central location
- The CCC will inspect all vehicles before we commence operations.
 - Zip Run will contact the CCC when a new vehicle needs to be inspected.
- Vehicle Safety Plan
 - Each vehicle is equipped with a locked and secure storage compartment in the trunk to hold the marijuana products.

- All vehicles will be staffed with two drivers.
- All vehicles are equipped with automatic locks, slightly tinted windows, and an internal alarm system.
- The vehicles will have no external markings or symbols that indicate marijuana delivery.



Security Plan Warehouse



We Don't Affect Traffic

We ARE NOT building a dispensary in the community, we just securely store product that will be delivered to our customers. Meaning our customers will never park on site to pickup up products. Only registered CCC members and Zip Run staff are allowed on site.

24/7 Camera Surveillance

Under the regs of the CCC, we are required to have video surveillance of our all entrances, parking lot, as well as the interior of the build to ensure proper safety for the community and our team.

Discreet Operations

We deliver discreetly and will build upon the security gate that surrounds the build to ensure very little visibility. In addition, we don't promote cannabis on our vehicles nor the building.

High-Security Vault Doors & Interior Electronic Security

By adding High-security doors and electronic security, we plan to optimize community, staff, and product protection.

Hired experienced Civil Engineers, Builders & Architects

We are working with engineers, builders, and architects who have built 10+ plus cannabis facilities in Boston/MA.



Prevention of Diversion Plan



Driver Prevention Protocols

- All Zip Run vehicles do not have markings or signs that suggest they are holding cannabis products.
- Zip Run will not accept cash or in-person debit card transactions from consumers. All transactions are finalized before our driver's arrival.
- Our drivers are instructed to be in constant contact with Zip Run's central location and if they feel unsafe at any time, skip the delivery and report any questionable activity right away.

Warehouse Prevention Protocol

- Security System: Axis Communication; built to secure cannabis locations and work with plenty of cannabis establishments in the state
- 24/7 video surveillance on 1170 Morrissey, powered by a generator to ensure it doesn't crash
- Zip Run team members are expected to use key cards that track their movement throughout our building to ensure we know have knowledge of all activity, enhancing our security system.

Route Optimization Integration

- We have integrated with a route optimization API that constantly changes the route of our delivery drivers. We implemented this technology so our delivery routes are not consistent.
- Dedicated personnel overseeing the operations from Zip Run's central location
- Direct one to one communication with all drivers via satellite and wifi (both cell phone and application).

Contact us



Gabriel Vieira gabe@ziprun.com