



Improvements to
McGann Playground
Hyde Park
Community Meeting #3



December 7, 2021
Boston Parks and Recreation



MEETING RECORDING



The Boston Parks and Recreation Department will be recording the meeting and posting to our project webpage for those who are unable to attend the Zoom meeting live.

It is possible that participants may also be recording the meeting with their phones cameras or other devices. If you do not wish to be recorded during this meeting, please keep your microphone and camera off.

VIRTUAL MEETING ETIQUETTE

We want to ensure this conversation is a pleasant experience for all and that all community members/ stakeholders are comfortable sharing their comments, questions and feedback.

Please be respectful and mindful of each other's time when asking questions/ providing comments, so that all attendees are able to participate in the meeting.

Keep questions/ comments project-specific and not personal to yield solution-driven discussion.

Please wait until all attendees have had the opportunity to ask a question/ provide a comment before providing additional questions/ comments.

You can always set up a conversation with Lauren Bryant, Lauren.Bryant@boston.gov to further discuss the project or process.

ZOOM TIPS

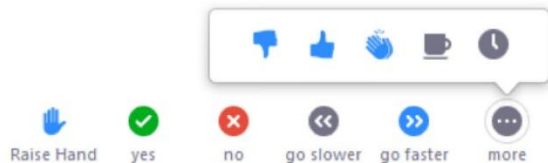
Here is how you can participate during the question and answer part of the presentation.

DURING THE PRESENTATION:



VIA WEB:

Turn video on / off.



To use these non-verbal options click on participants (bottom of screen); these options will pop up in side bar.

DURING THE Q&A:



JOINING VIA PHONE?

Use *9 to raise hand to ask for audio / video permission to ask questions or provide comments.



VIA WEB:

Chat to ask questions / comments or provide responses to poll questions



Raise hand to ask for audio / video permission to ask questions or provide comments.

AGENDA

1

SCHEDULE + INTRODUCTION

2

MEETING 2 + POP UP FEEDBACK SUMMARY

3

PLAYGROUND CONCEPTS + EQUIPMENT IDEAS

4

LISTENING & DISCUSSION

5

CLOSING REMARKS & NEXT STEPS

PROJECT TEAM

LAUREN BRYANT

PROJECT MANAGER

Lauren.Bryant@boston.gov or 617-961-3019

CHRISTINE BRANDAO

OUTREACH COORDINATOR, EXTERNAL AFFAIRS

christine.brandao@boston.gov or 617-961-3006

G2 COLLABORATIVE LANDSCAPE ARCHITECTURE

Gigi Saltonstall + Lisa Giersbach, Principals

Patricia Noto, Landscape Designer

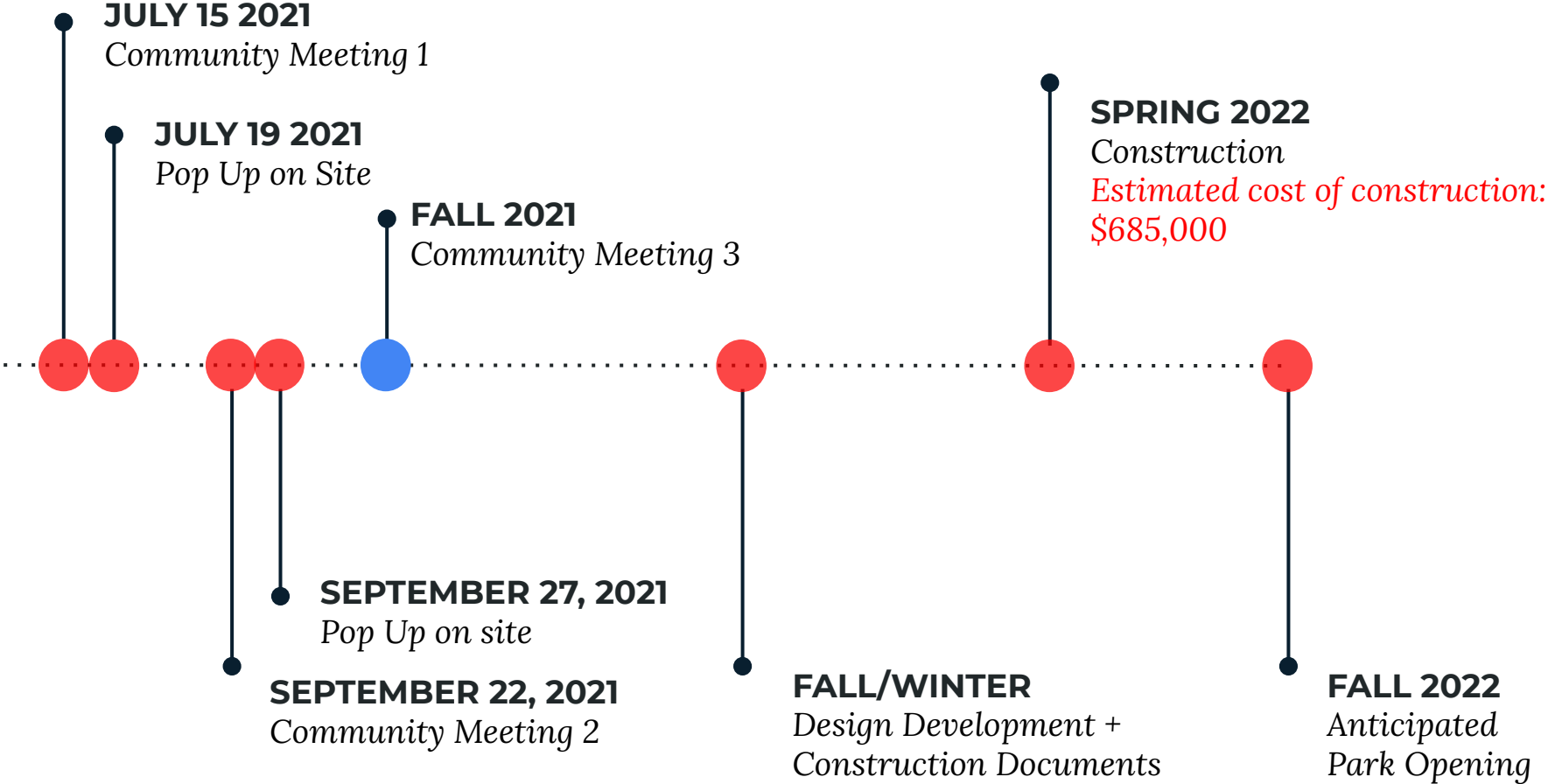
DENYEL FONSECA

OFFICE OF NEIGHBORHOOD SERVICES

denyel.fonseca@boston.gov



PROJECT SCHEDULE & FUNDING



McGANN PARK

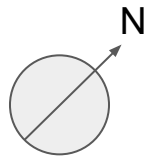


MEETING 2 DESIGN CONCEPTS

EXISTING SITE PLAN



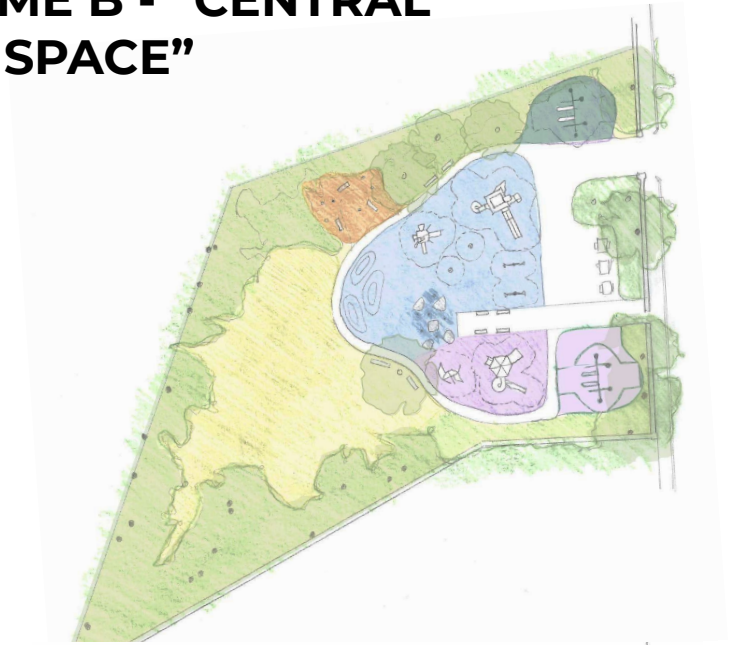
WEST STREET



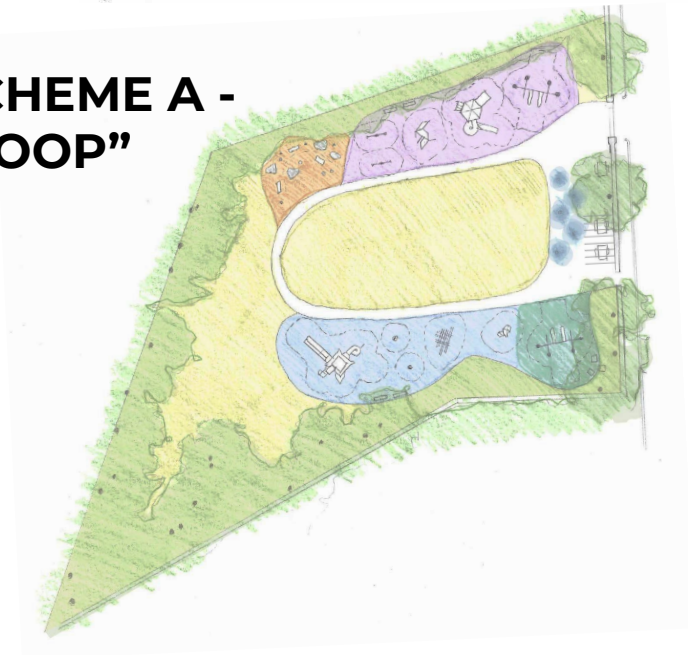
EXISTING CONDITIONS



SCHEME B - "CENTRAL PLAY SPACE"



SCHEME A - "LOOP"



SCHEME C - "CHARM BRACELET"



MEETING 2 + POP UP FEEDBACK

- **Likes:**

- **Looping trike loop**
- **Visibility between play areas for different areas**
- **The natural elements already on site such as trees and open green space**
- **More climbing + spinning! Rock climbing handholds are fun.**
- **Intergenerational games + steering wheels on panels**
- **Play mounds**
- **Seesaws + swings**
- **Water play**
- **A big slide**
- **ADA accessible picnic tables**
- **Access to golf course**

- **Concerns:**

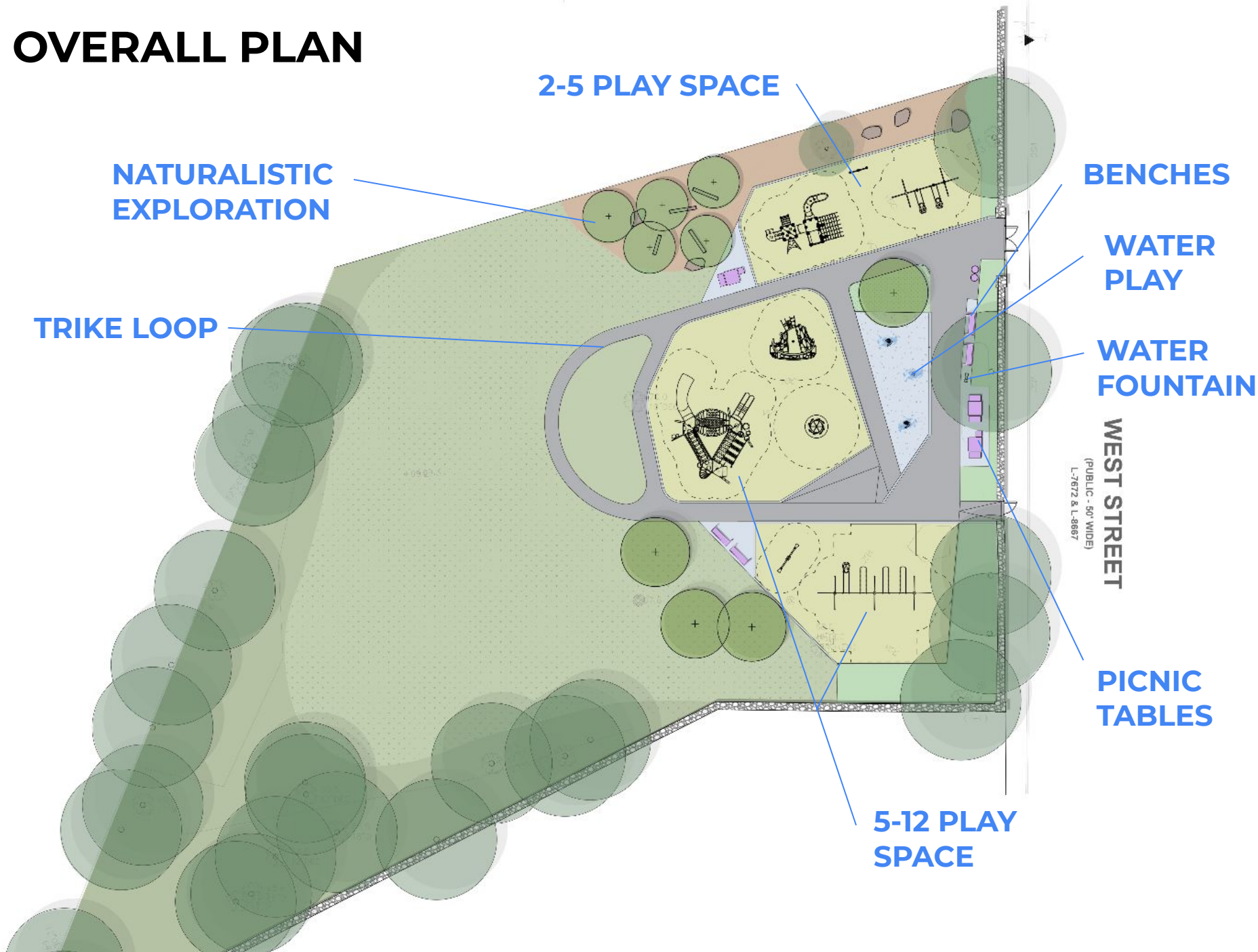
- **Golf balls at back fence line**
- **Concern about noise along residential fence line**
- **West St. traffic**



UPDATED DESIGN CONCEPTS

- **2-5 year play area**
- **5-12 play area** - *option A*
- **5-12 play area** - *option B*

OVERALL PLAN



2-5 PLAY SPACE

NATURALISTIC EXPLORATION

TRIKE LOOP

BENCHES

WATER PLAY

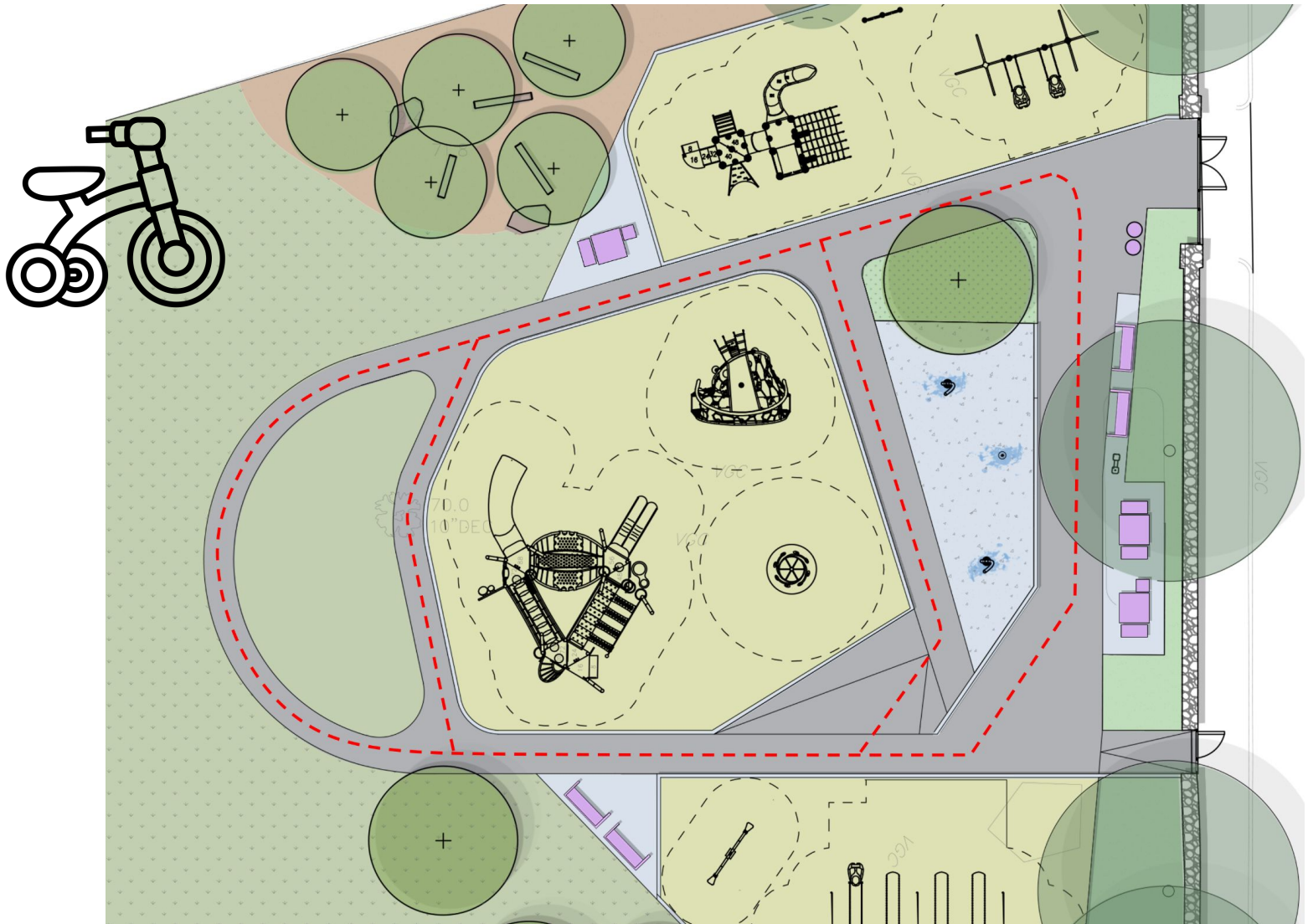
WATER FOUNTAIN

WEST STREET
(PUBLIC - 50' WIDE)
L-7672 & L-9867

PICNIC TABLES

5-12 PLAY SPACE

TRIKE LOOP



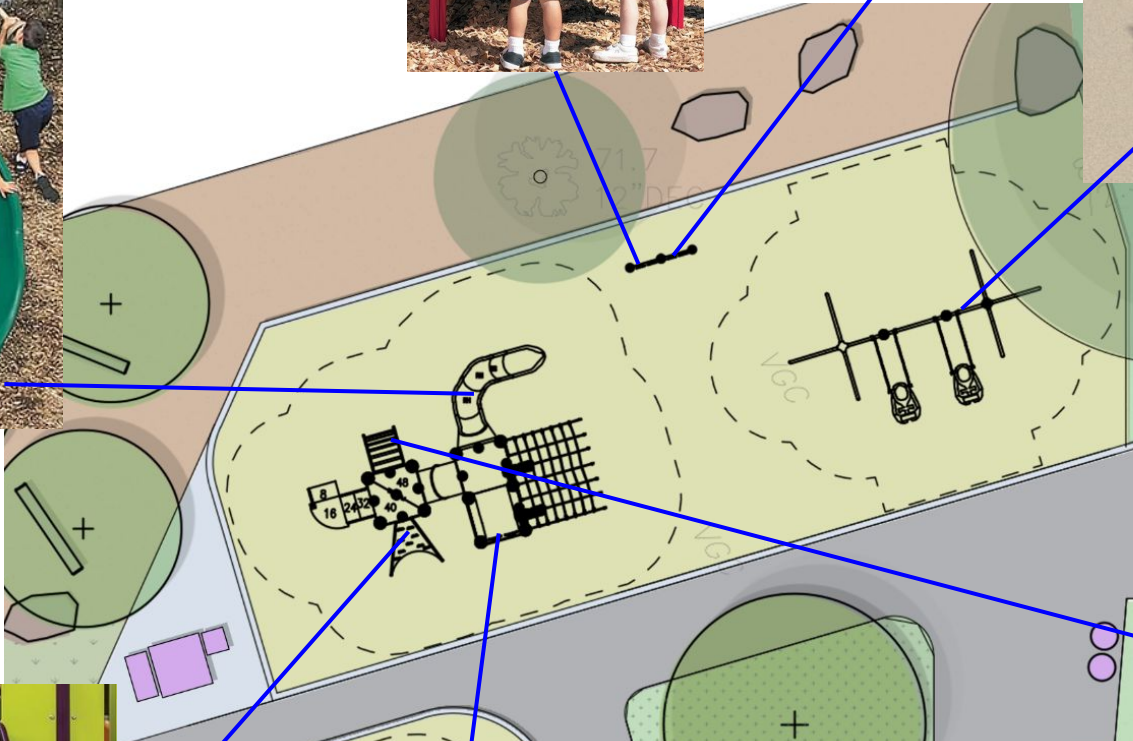
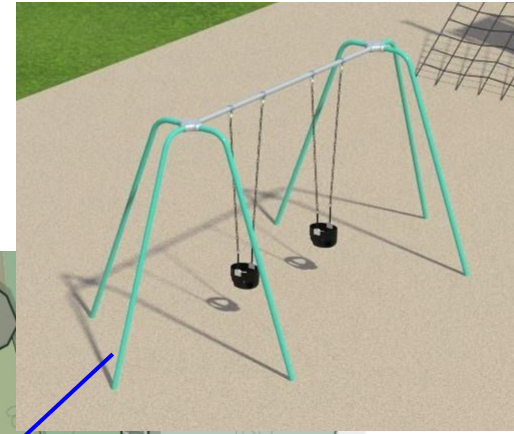
2-5 PLAY SPACE



2-5 PLAY SPACE



2-5 PLAY SPACE



5-12 PLAY AREA - SCHEME A



WESI SIKKEI

(PUBLIC - 50' WIDE)
L-7672 & L-9867

OVERALL SCHEME A



5-12 PLAY AREA - SCHEME A



5-12 PLAY AREA - SCHEME A



5-12 PLAY AREA - SCHEME A

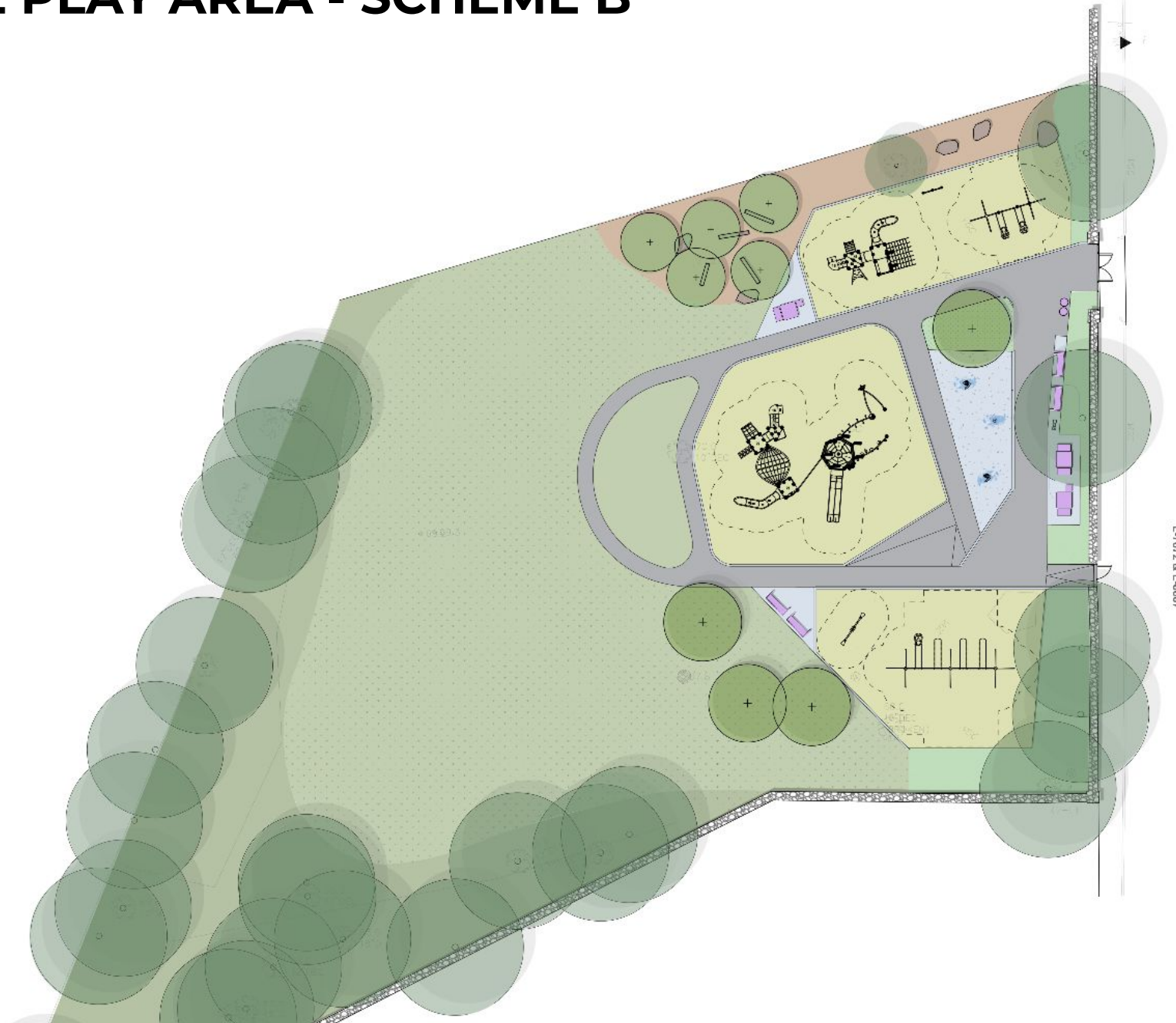


5-12 PLAY AREA - SCHEME A - CLIMBER + SPINNER



5-12 PLAY AREA - SCHEME B

OF GORG WRIGHT
GOLF COURSE



WEST STREET
(PUBLIC - 50' WIDE)
L-7672 & L-8687



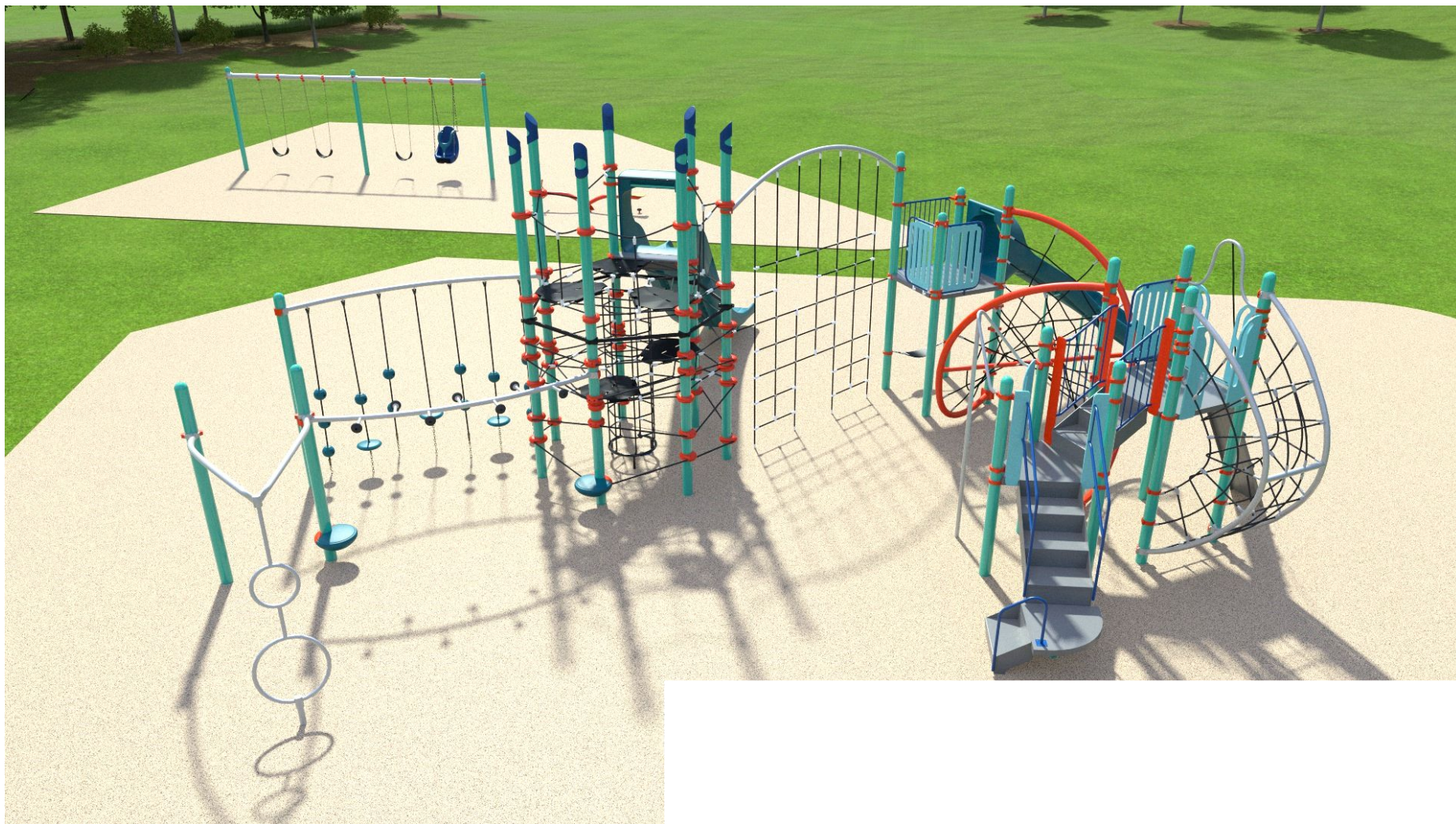
OVERALL SCHEME B



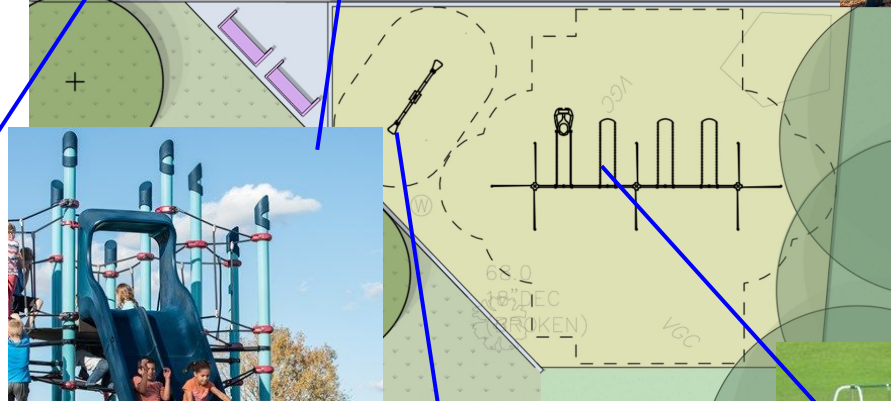
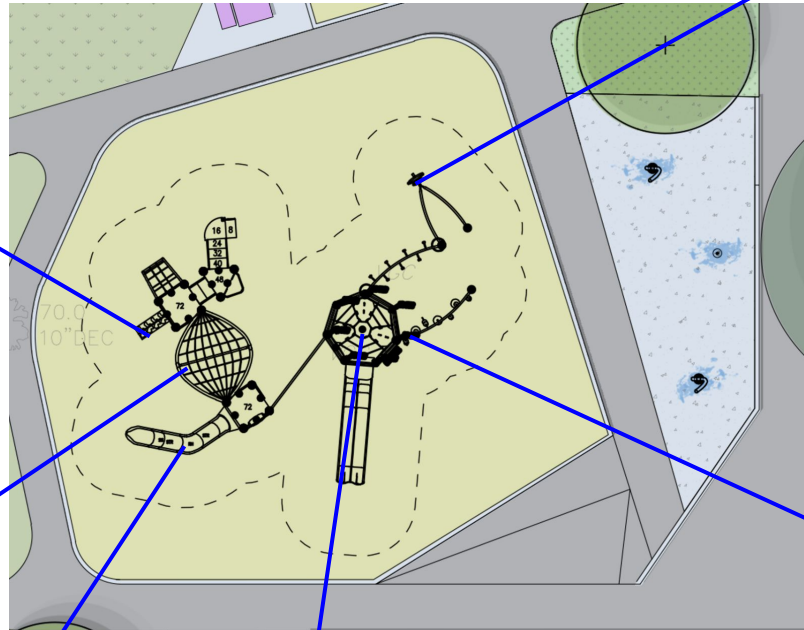
5-12 PLAY AREA - SCHEME B



5-12 PLAY AREA - SCHEME B



5-12 PLAY AREA - SCHEME B

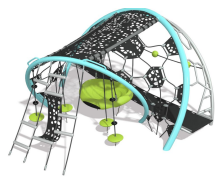




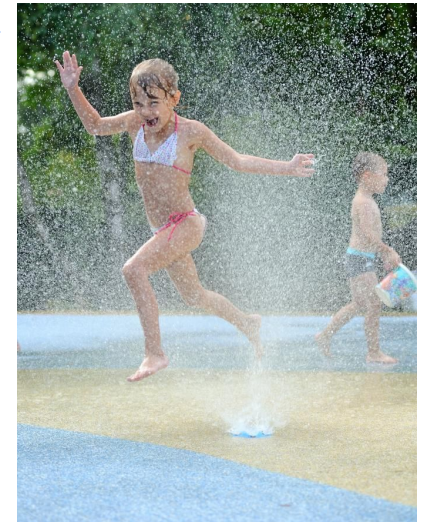
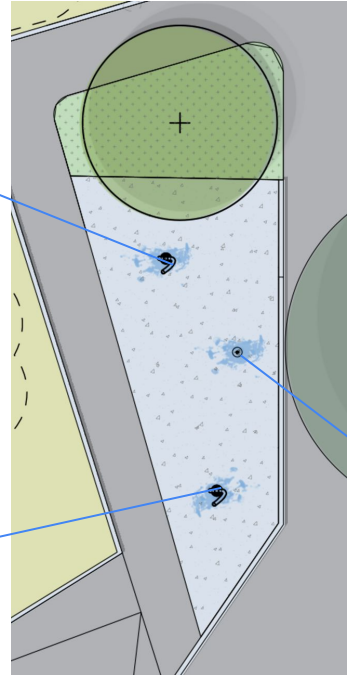
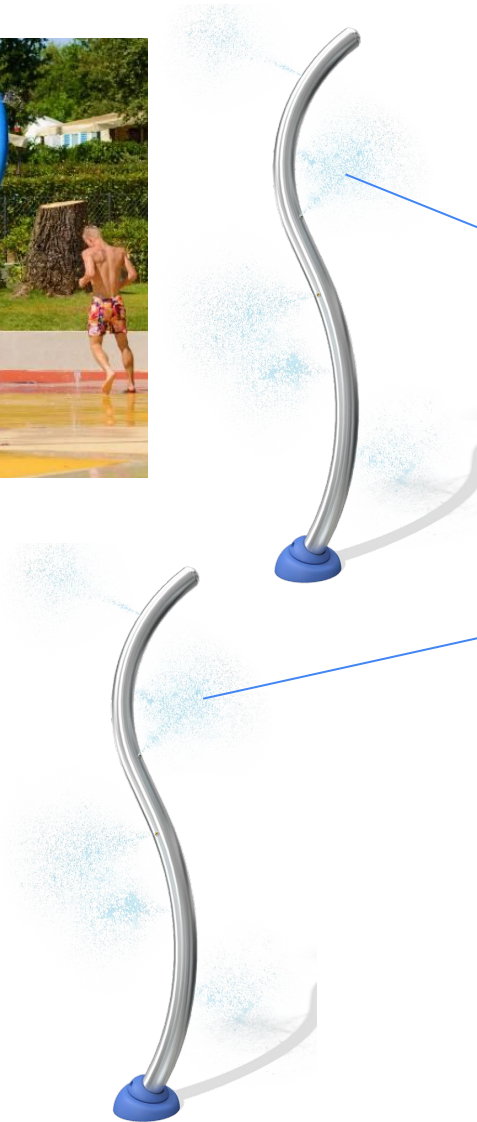
SCHEME A



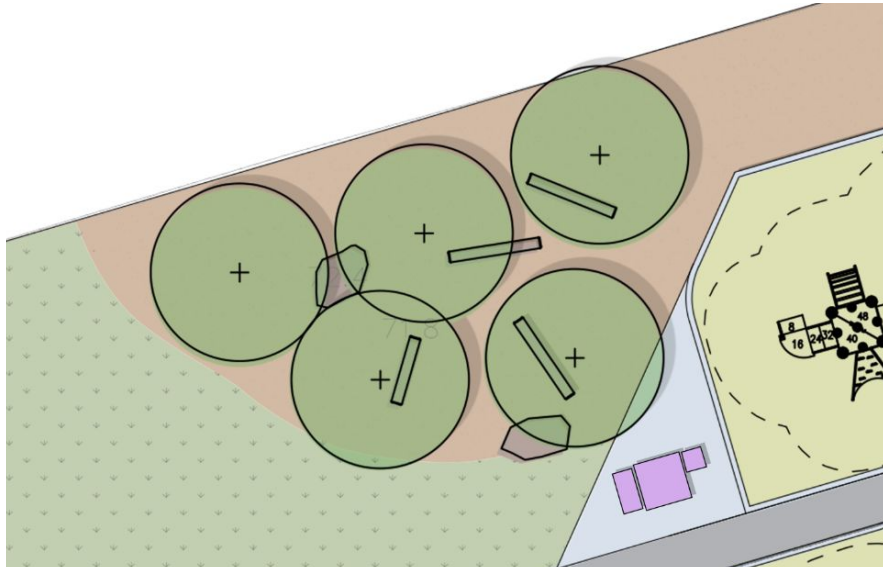
SCHEME B



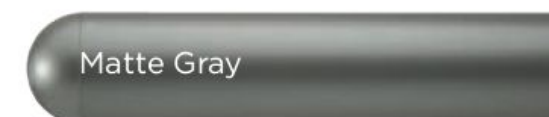
WATER PLAY



NATURALISTIC PLAY



COLOR PALETTE - SPRING



COLOR PALETTE - SPRING



COLOR PALETTE - OCEAN



COLOR PALETTE - OCEAN



SITE FURNISHINGS



Picnic Table

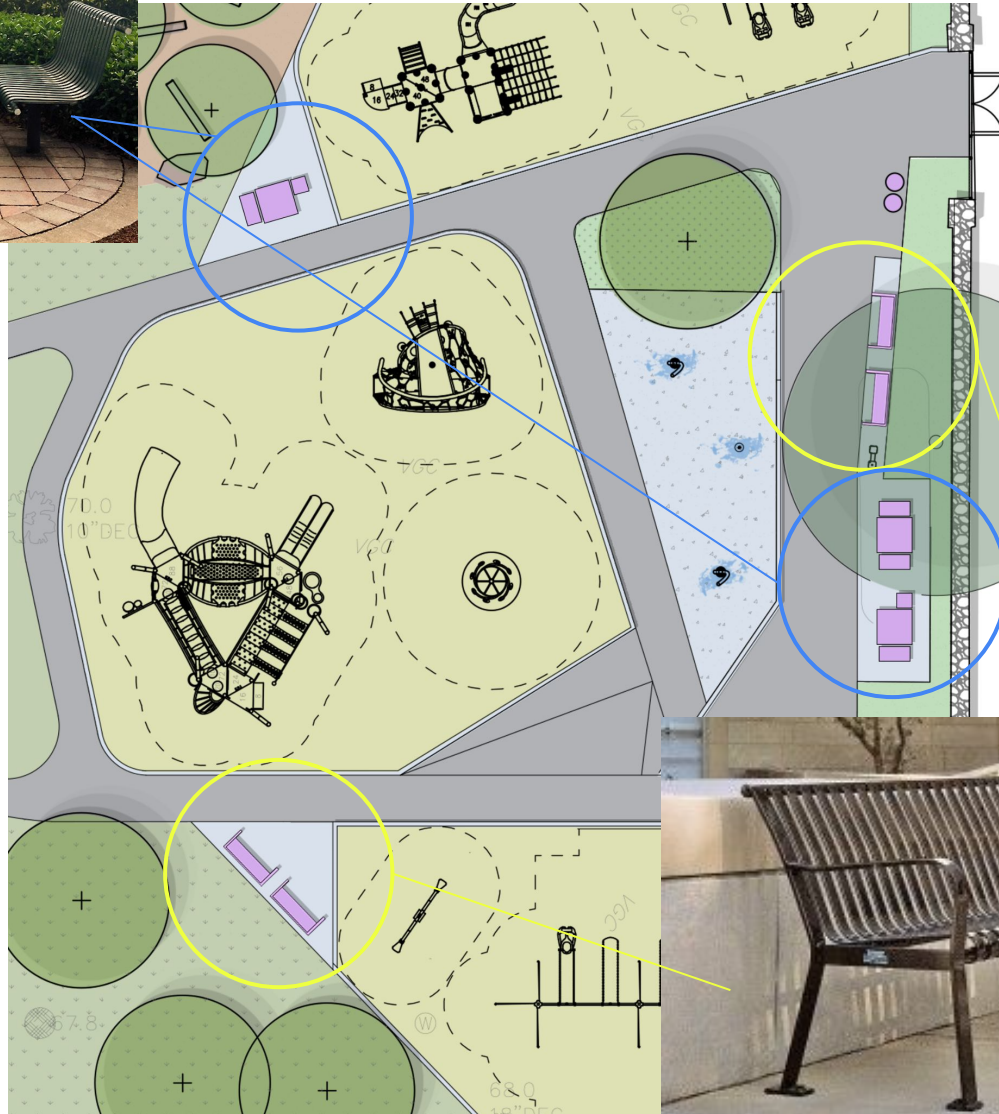


Bench



Water fountain

SITE FURNISHINGS



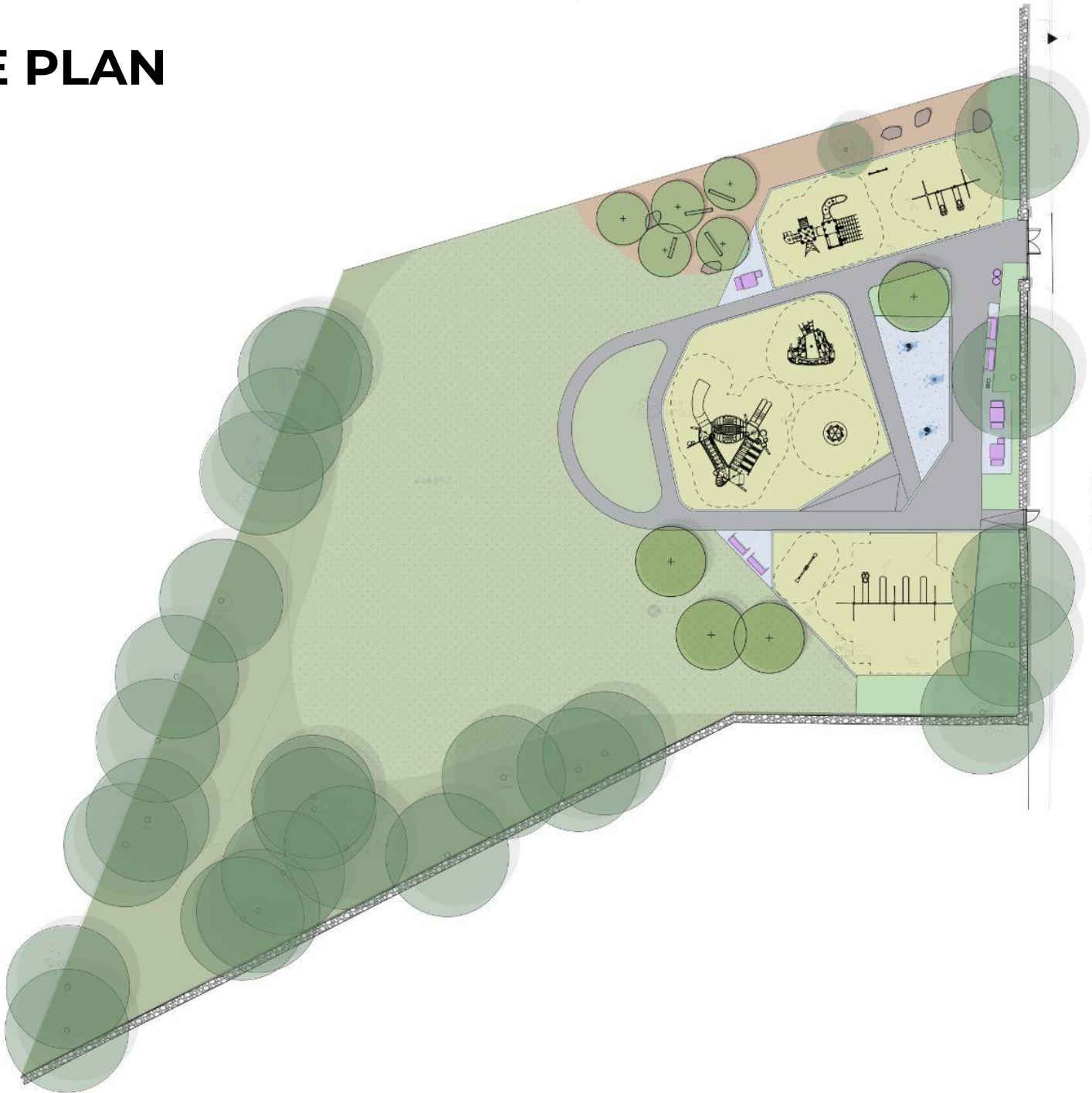
LISTENING & DISCUSSION

Help us build great parks.
Let us know what matters to you.



SITE PLAN

GEORGE WRIGHT



WEST STREET
(PUBLIC - 50' WIDE)
L-7672 & L-3667



THANK YOU!

For questions, maintenance requests or concerns regarding any of our parks contact 311



For questions or comments on the project, please reach out to Lauren Bryant at Lauren.Bryant@boston.gov or at 617-961-3019

