

SELDC Hearing

December 7, 2021

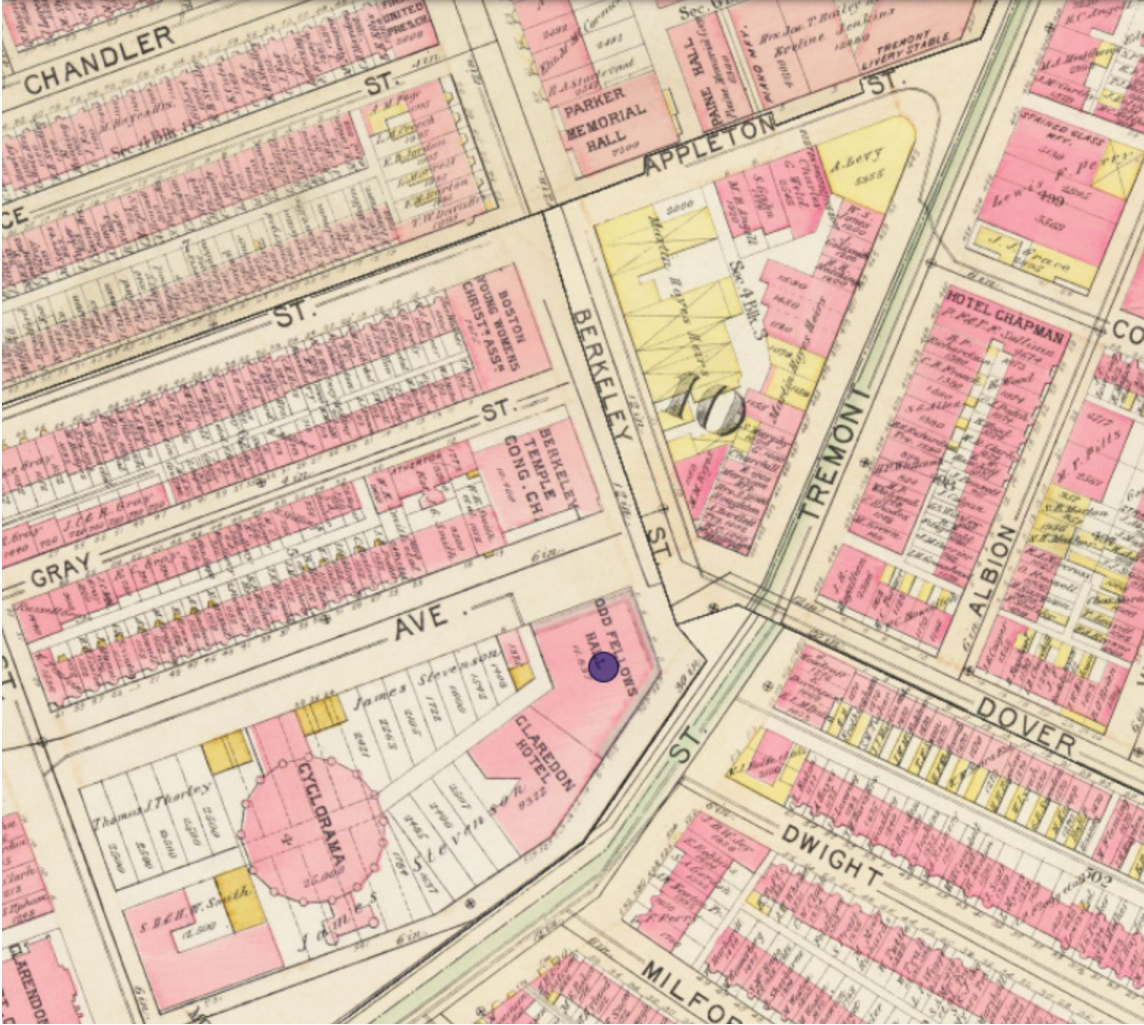
A demountable permanent-looking structure designed for new tenants at Atelier|505 is proposed at the currently unoccupied plaza at 505 Tremont Street.

Sidewalk Activation



Urban Context

The built form of the Atelier 505 block and the buildings north of Tremont Street along Berkeley Street were always an anomaly in the South End.



1895 [Atlascope Boston](#)

Existing Building



Project History

505 Tremont Street



Advisory Meeting #1

July 6, 2021

The Commissioners questioned the appropriateness of this project in light of the fact that seasonal enclosures at restaurant entries are not typically approved in the district. The durability of the materials was also questioned.

Advisory Meeting #2

September 13, 2021

The Commissioners appreciated the strategy of a “demountable permanent structure.” They questioned the aesthetics of the roof material for looking too temporary and noted that signage is prohibited on awnings.

Hearing

December 7, 2021

Existing: Front Elevation

Northeast Elevation



0' 1' 2' 5' 10'

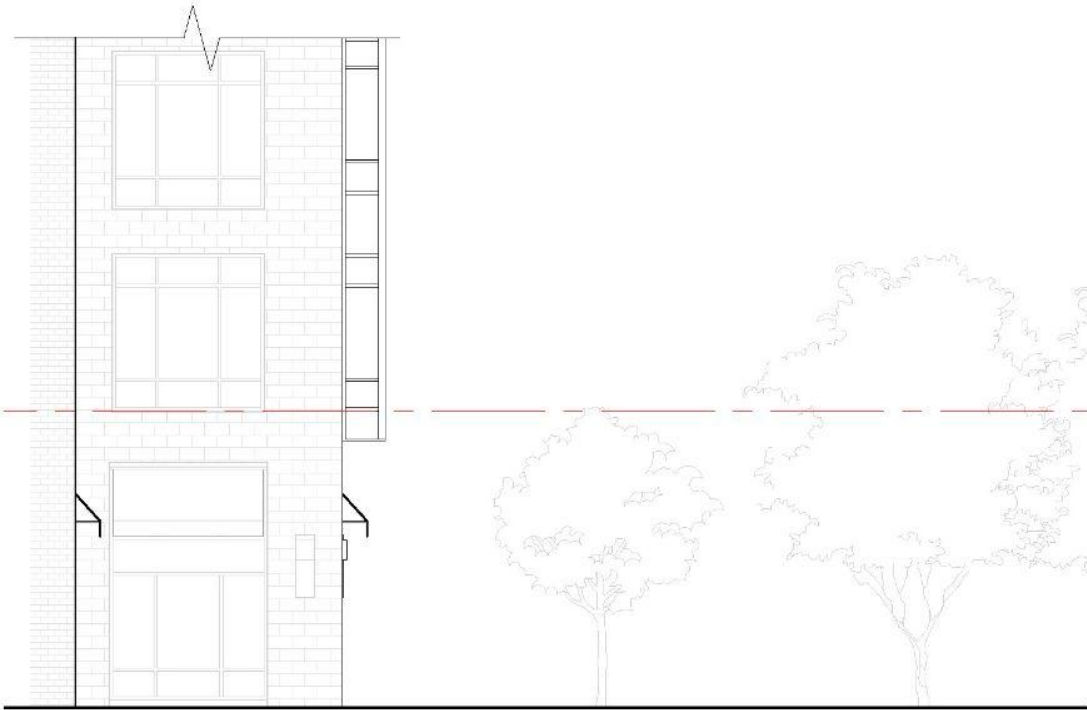
Proposed: Front Elevation

Northeast Elevation

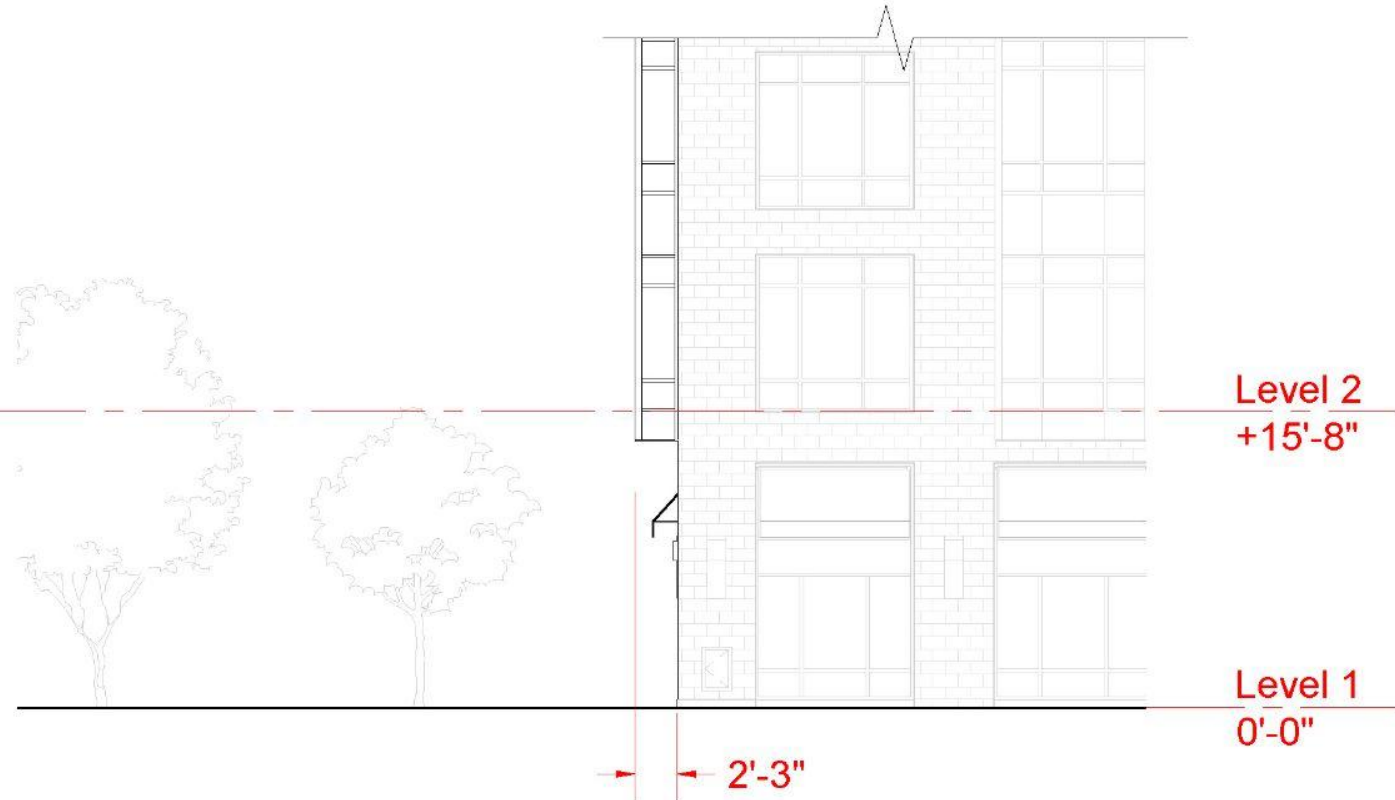


Existing: Side Elevations

Southeast Elevation
(Tremont St side)

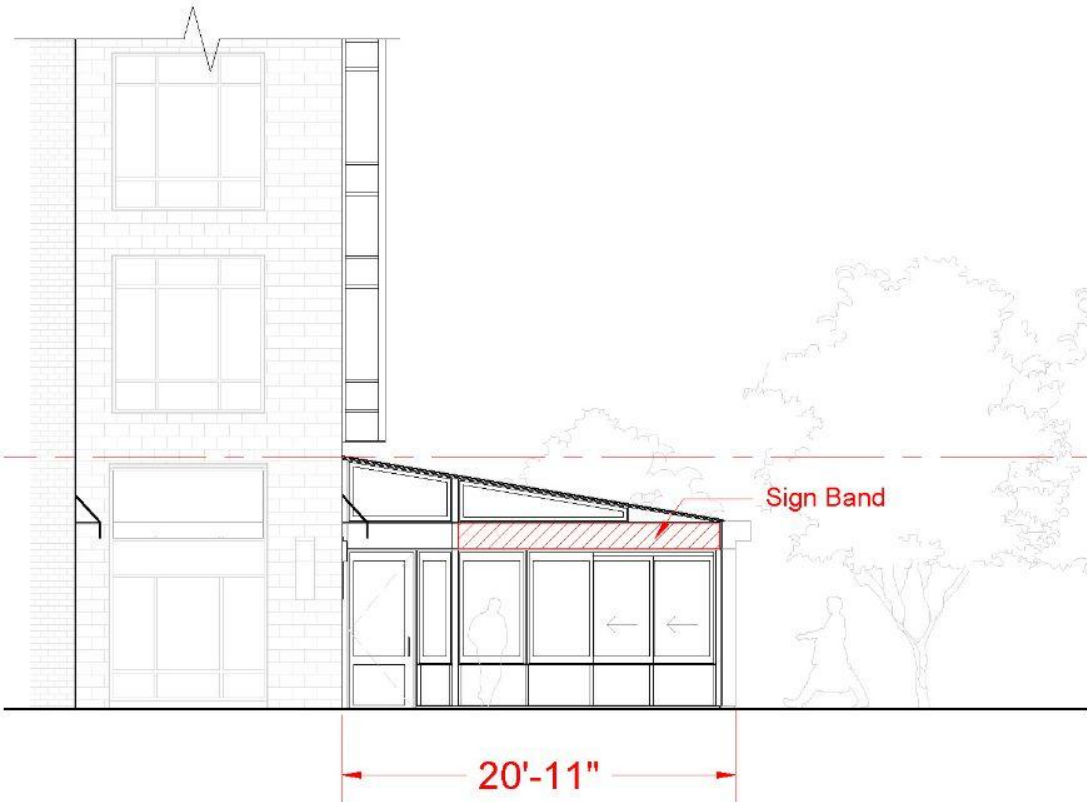


Northwest Elevation
(Warren St side)



Proposed: Side Elevations

Southeast Elevation
(Tremont St side)



Northwest Elevation
(Warren St side)



Aerial from Tremont



Precedent Metal Roof Edge

655 Tremont Street

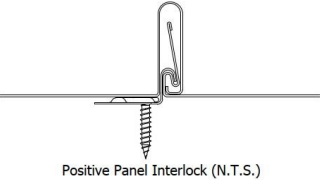
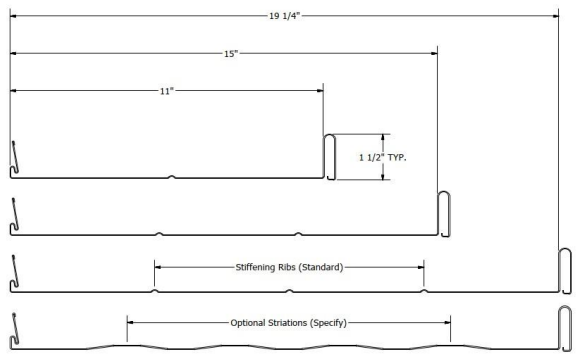
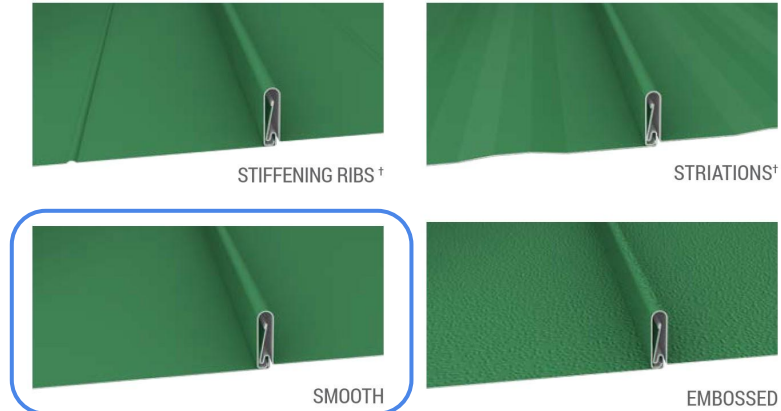




Looking south on Berkeley St

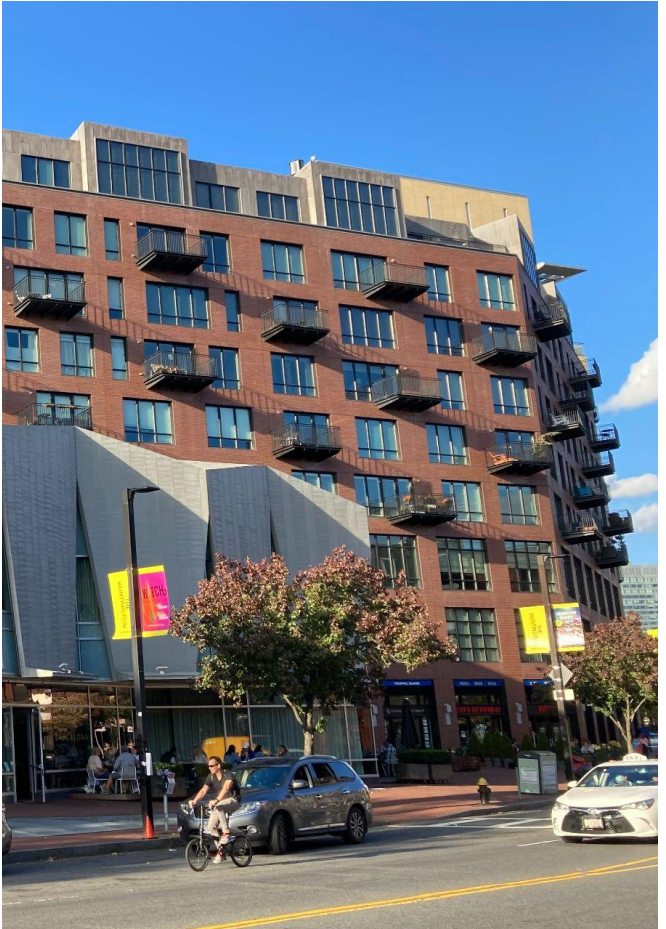


Metal Roof: ATAS Dutch Seam

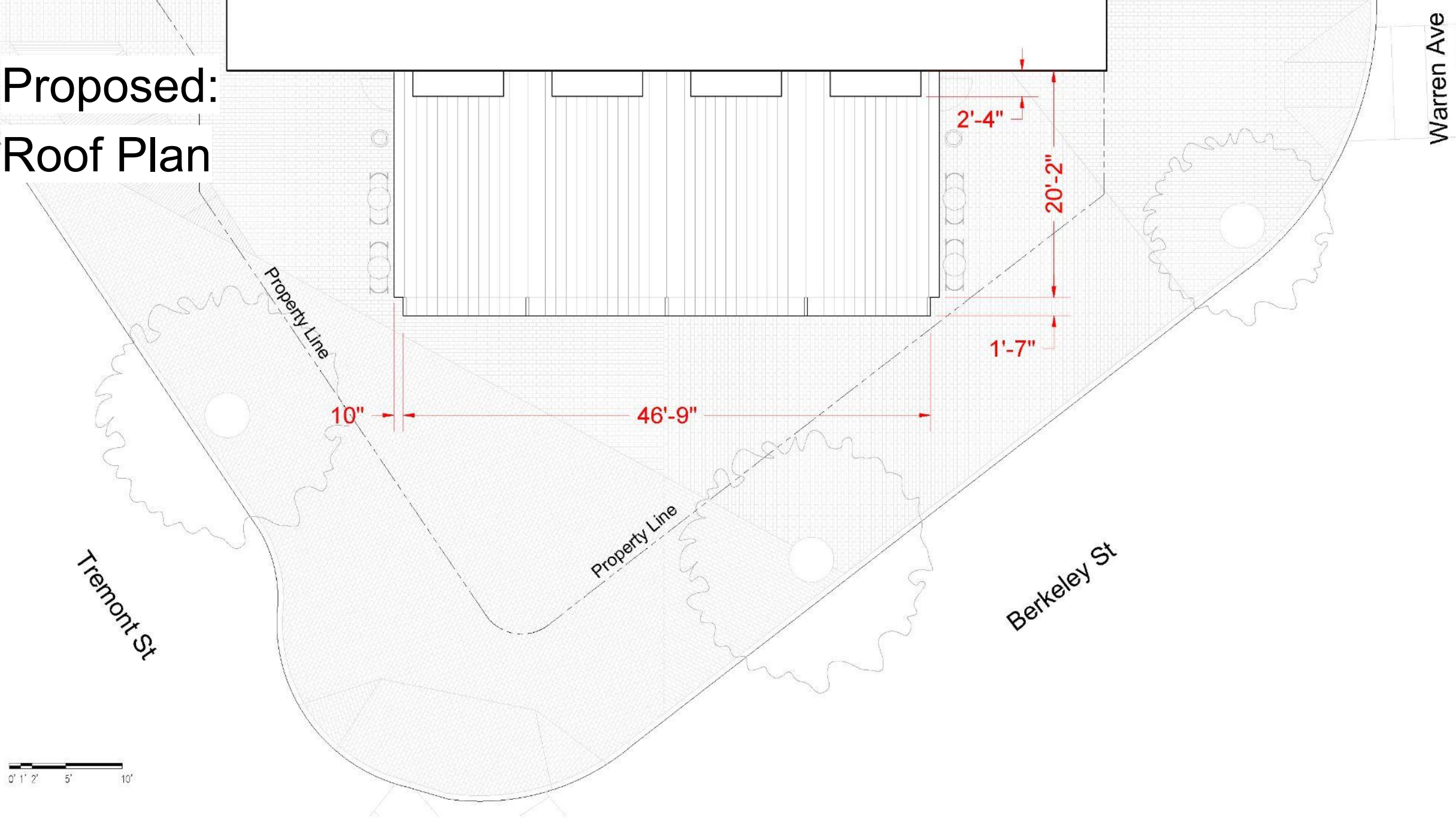


55% Al-Zn Coated Steel with Acrylic Coated Steel
Smooth finish

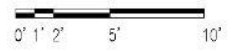
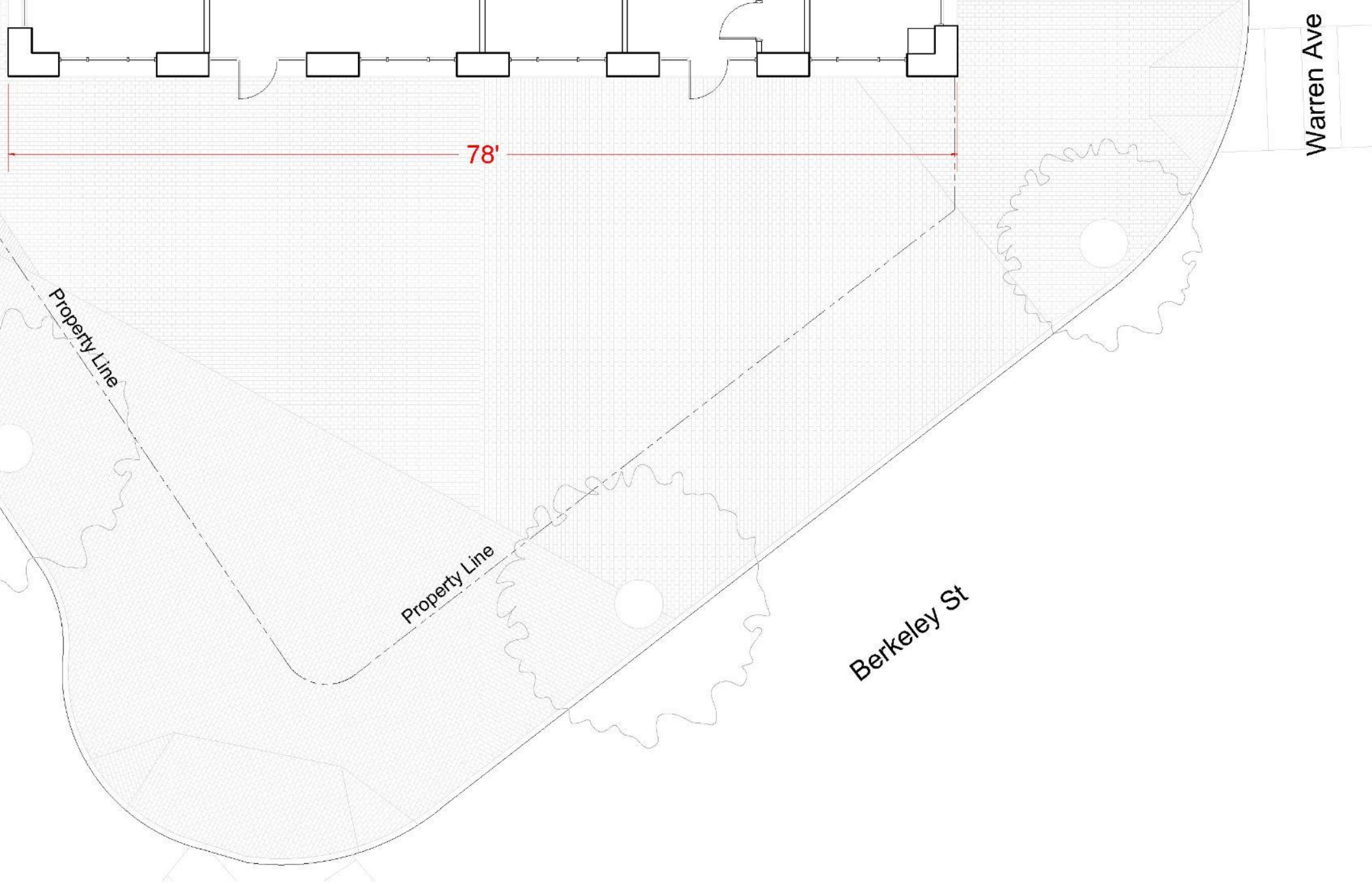
Match light metal color of the
Calderwood Pavilion.



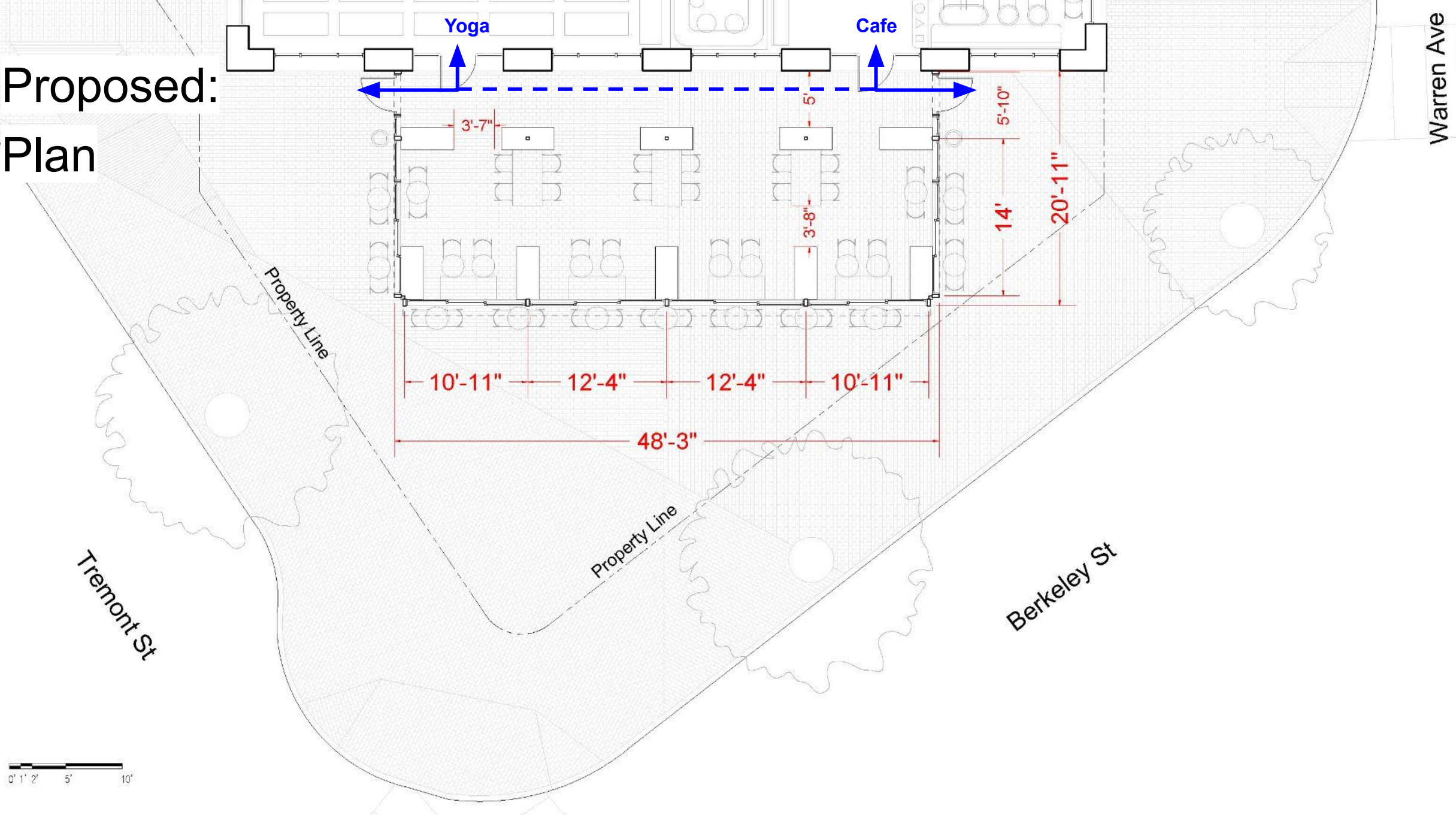
Proposed: Roof Plan



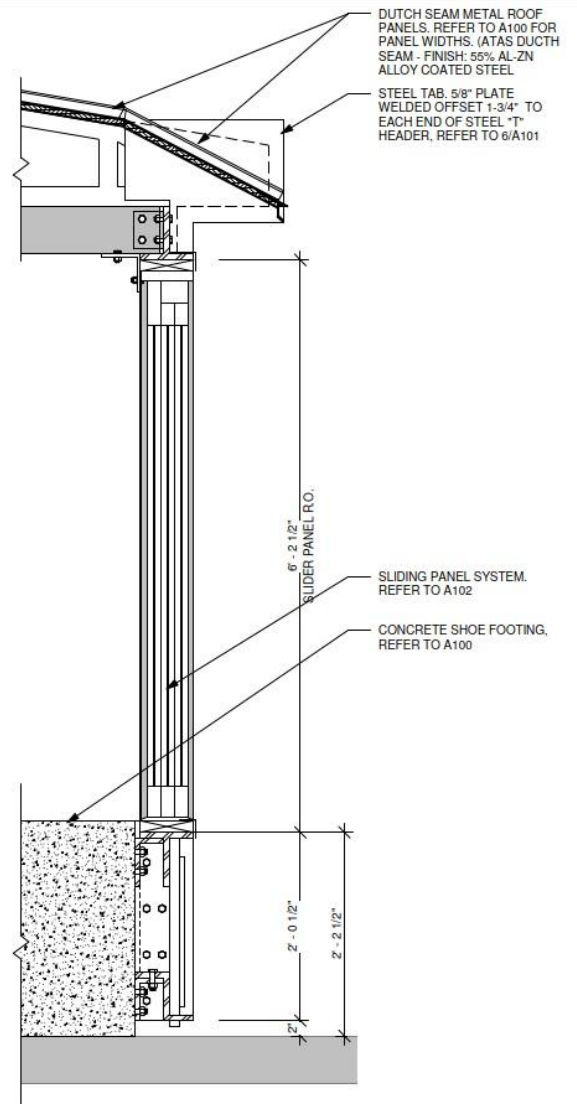
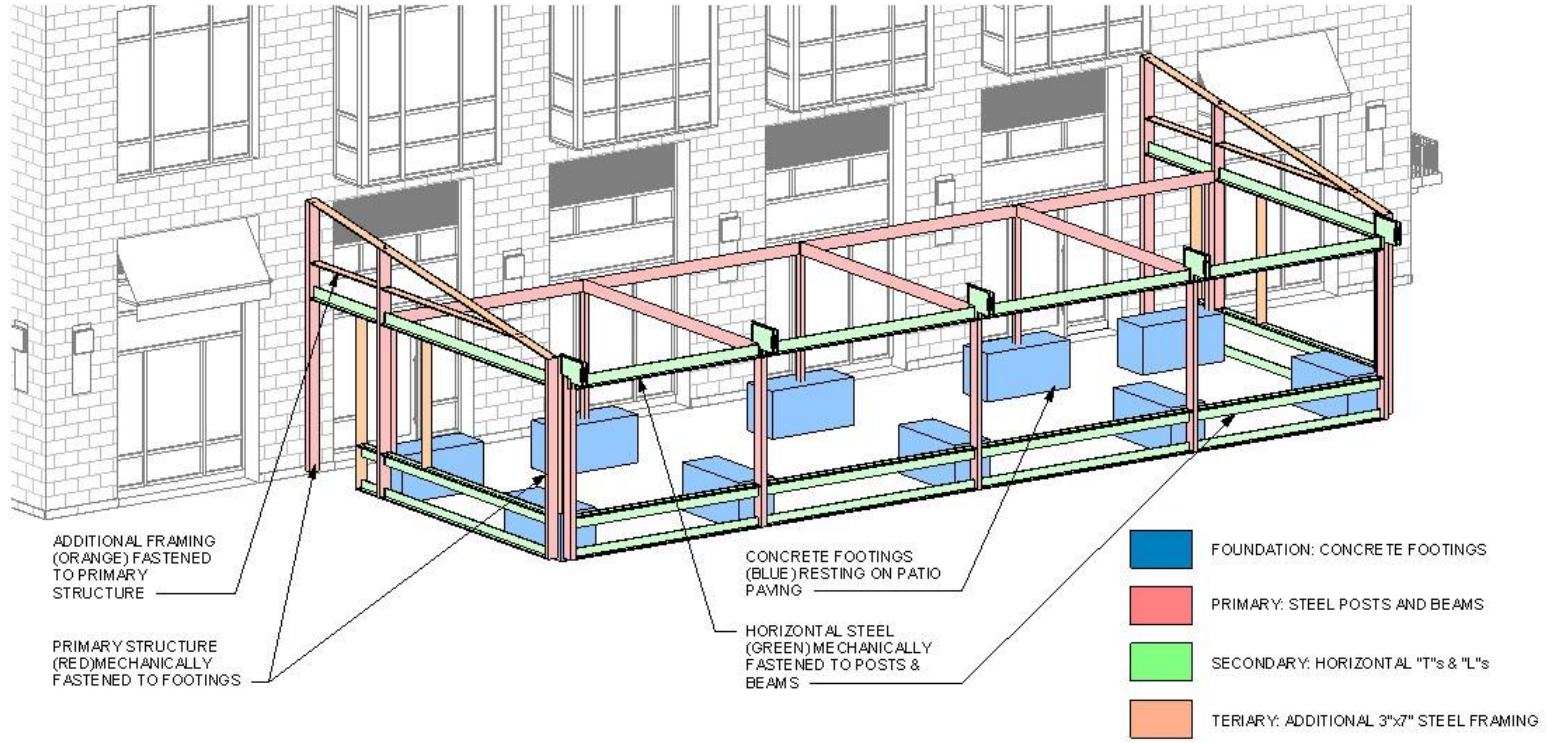
Existing: Plan



Proposed: Plan

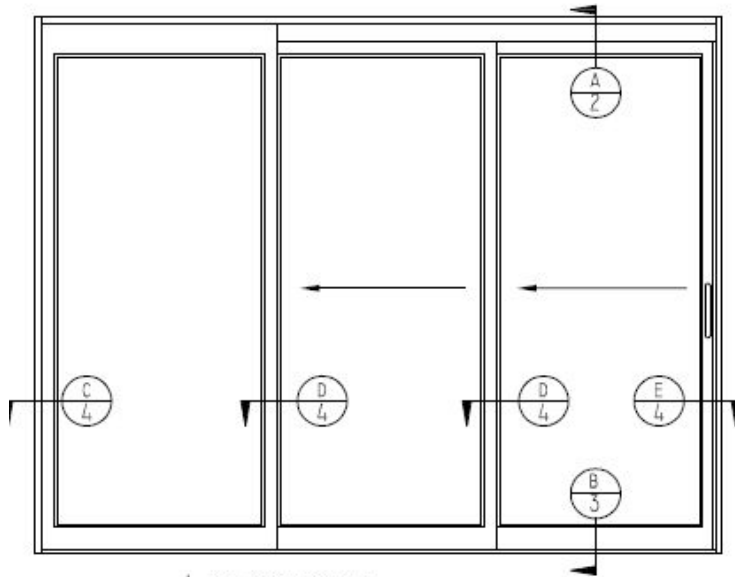


Connection to Existing Plaza

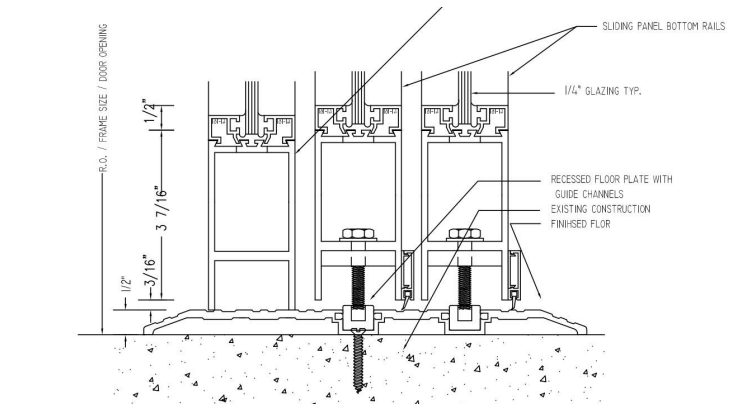
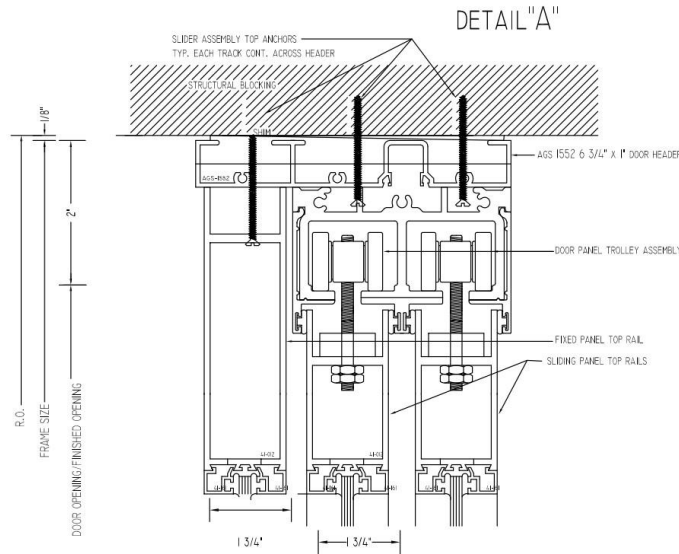


Section Detail:
Front Edge of Enclosure

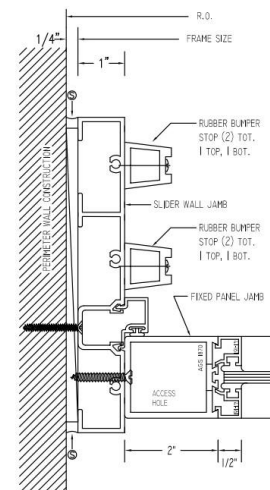
Sliding Panels: Architectural Glazing Systems, Pacer 450 Series



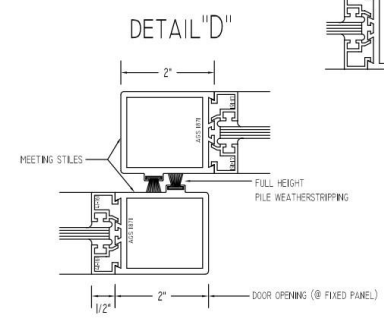
1 THUS TOTAL



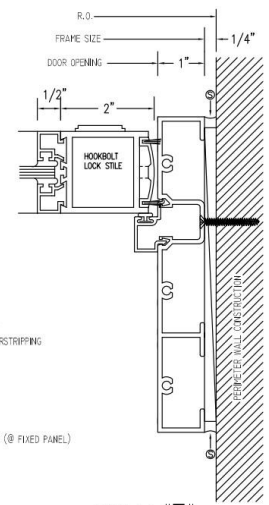
DETAIL "B"



DETAIL "C"



DETAIL "D"



DETAIL "E"

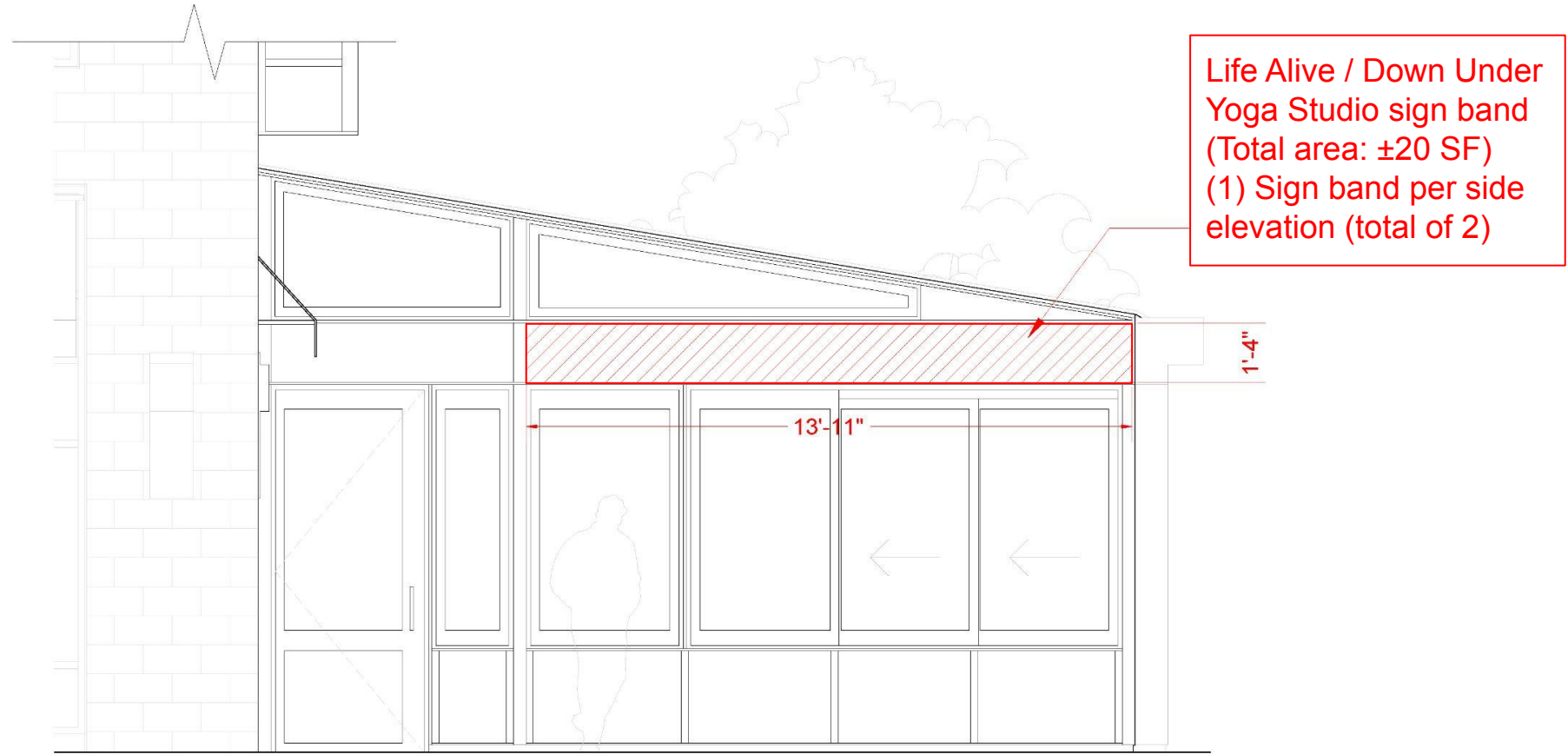


Black LT601

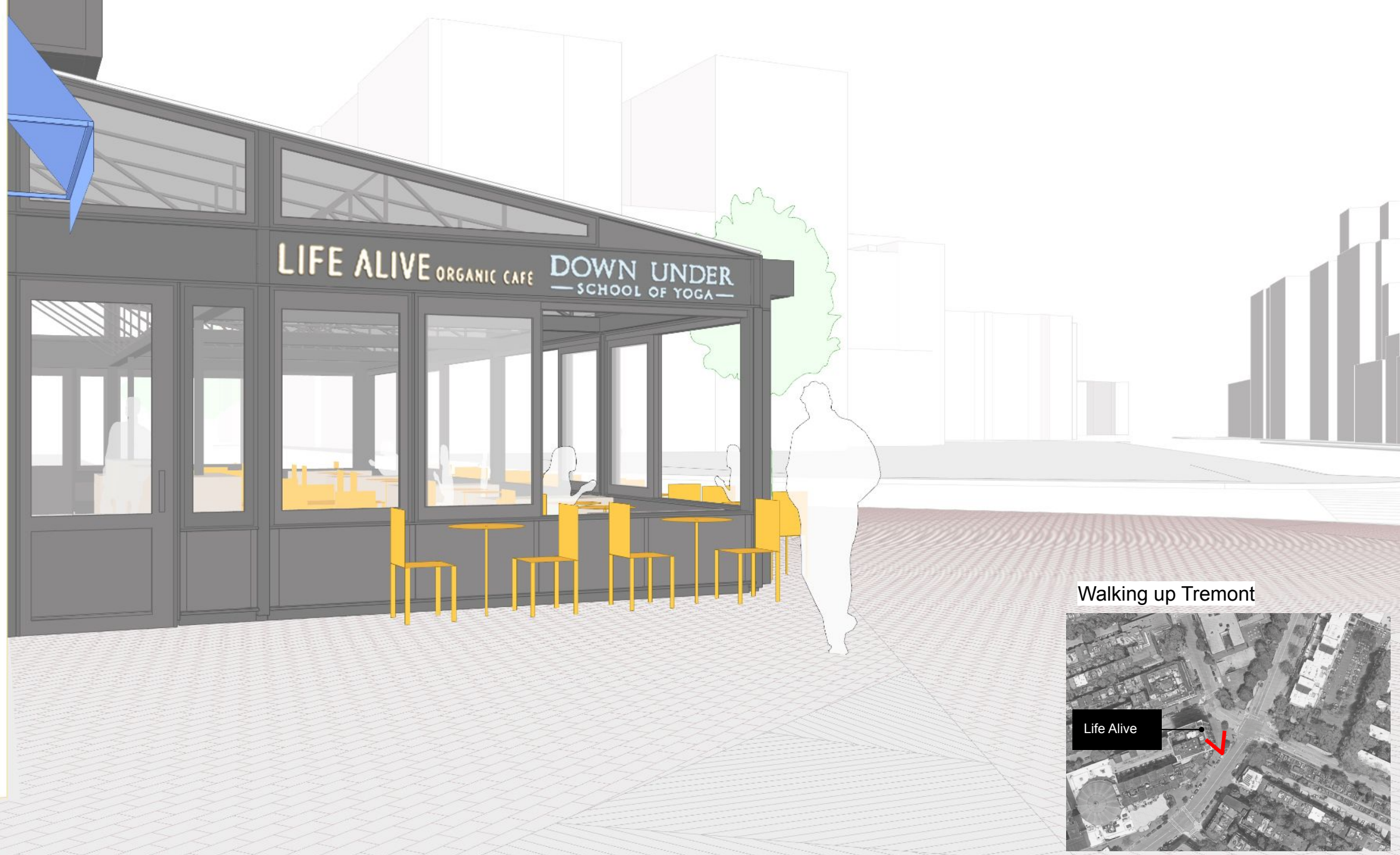
AGS finish approximation. Finish to be color matched to existing building storefront framing (Charcoal/Black)

Signage Details

- Life Alive / Down Under Yoga Studio signage design will follow the Atelier|505 Sign Criteria
- Sign band text will not exceed a height of 12 inches
- Signage to be comprised of 3D lettering, mounted to recessed metal panel of sign band



Signage Elevation N.T.S.



Walking up Tremont





Tremont St looking west

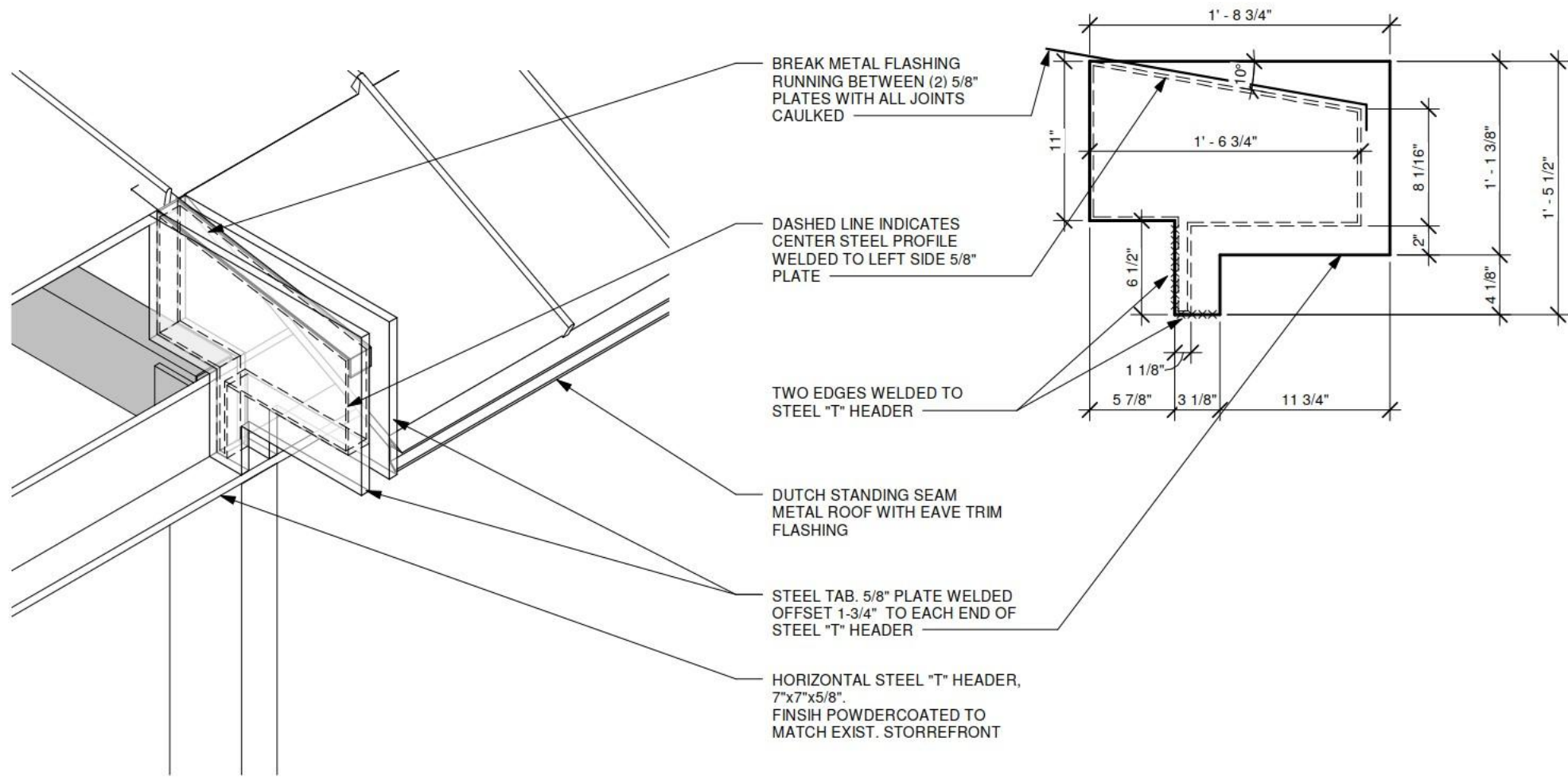




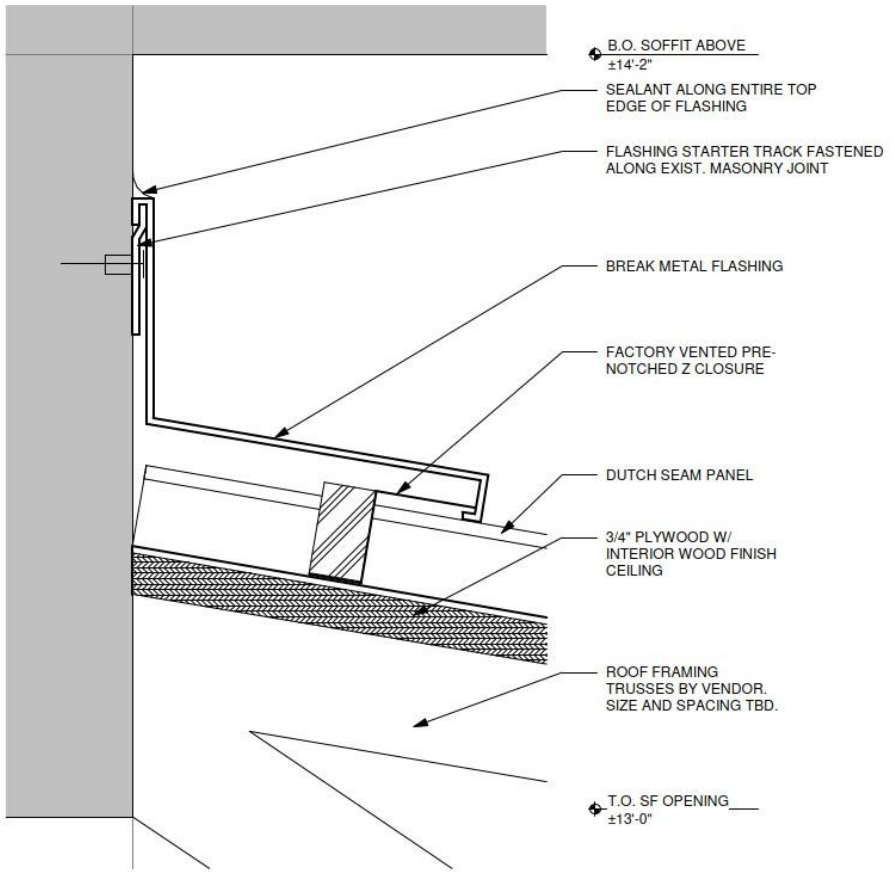
Moving north on Berkeley St



Tab Detail

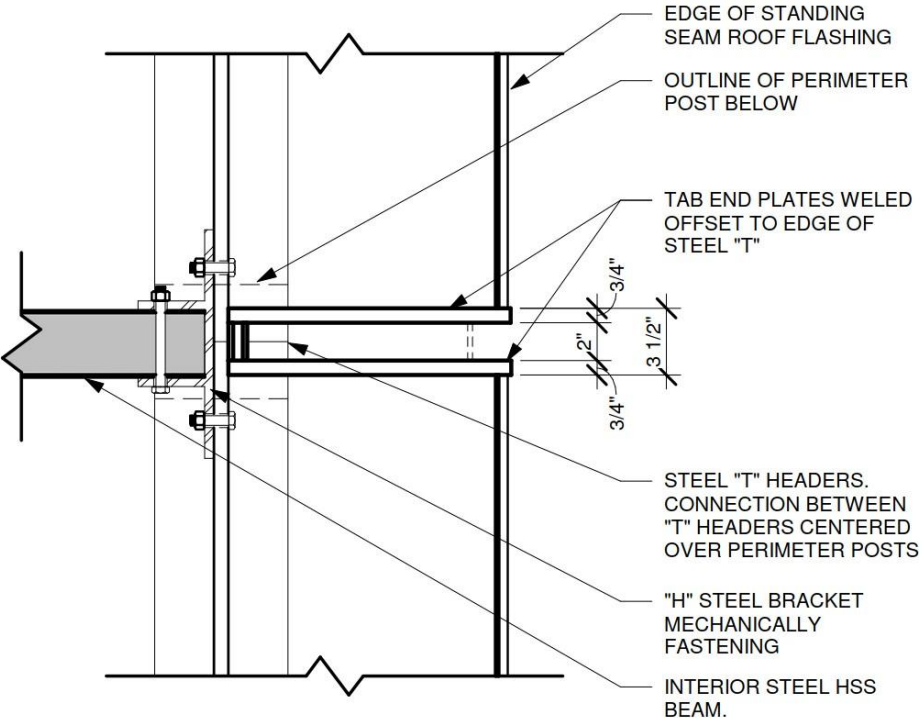


Connection to Existing Building

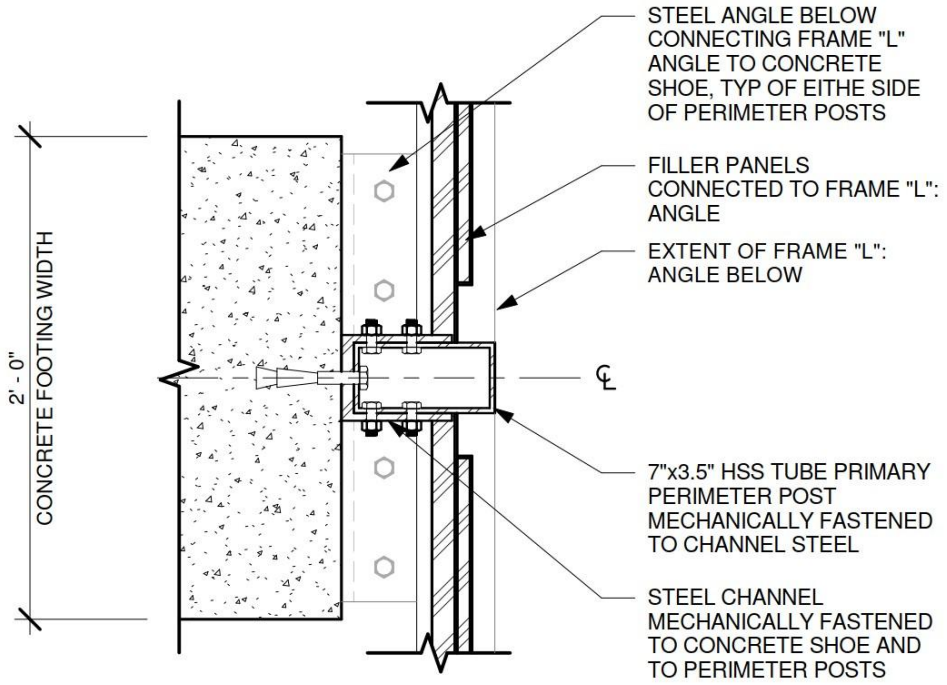


Section Detail:
Flashing Starter Track Detail

Demountable Construction

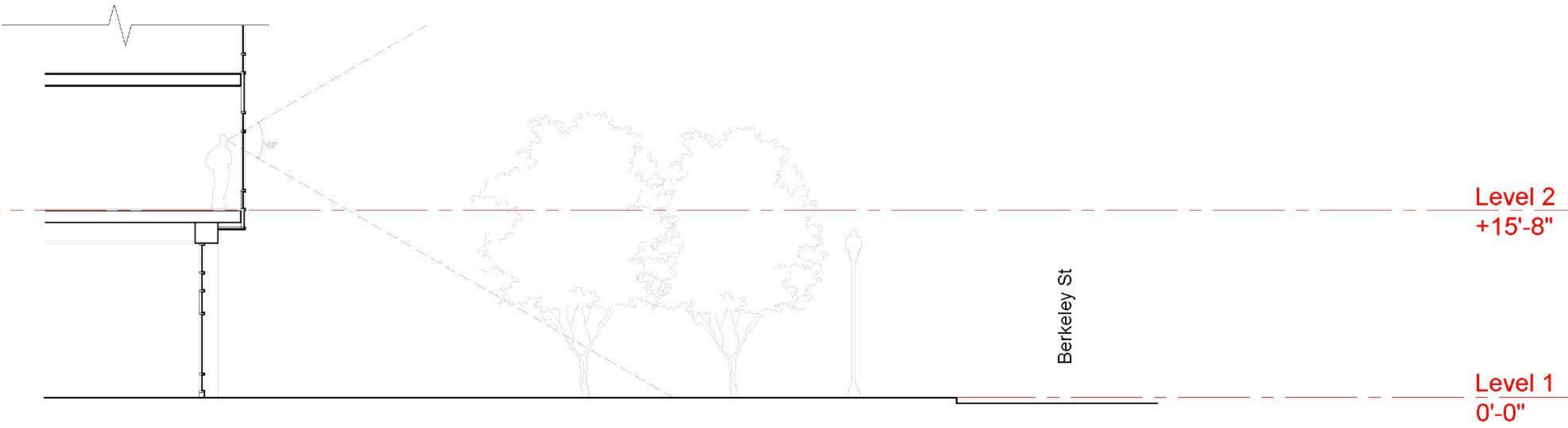


Plan Detail:
Post & Beam Top Connection Detail



Plan Detail:
Concrete Base & Post Connection Detail

Existing: Section, view from Atelier 505



Proposed: Section, view from Atelier 505

