



PAGE	DESCRIPTION
1	3-D Rendering of the structure at 46 Farnsworth Street.
2	2-D Photo and Rendering of the structure at 46 Farnsworth with proposed graphics
3	Low-Profile Dental Partners of Boston website address on the center of the southernmost group of three windows and the center of the northernmost group of three windows (left of entry doors)
4	Dental Partners of Boston logo on the center window, central to the three sets of windows (north to south)
5	Dental Partners of Boston logo on center of middle transom lite
6	Dental Partners logo Flat panel sign on cement of north end of building
7	46 Farnsworth Flat panel sign to left of entry door on the face of the brick
8	2-Sided Blade sign to the right (north) and above the entry door

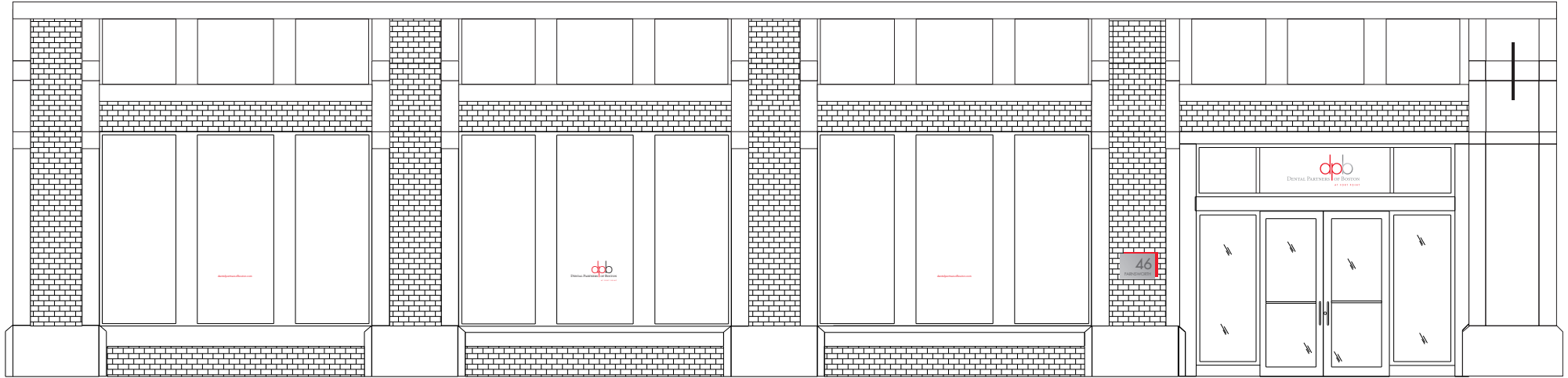
3-D rendering of the structure at 46 Farnsworth Street.





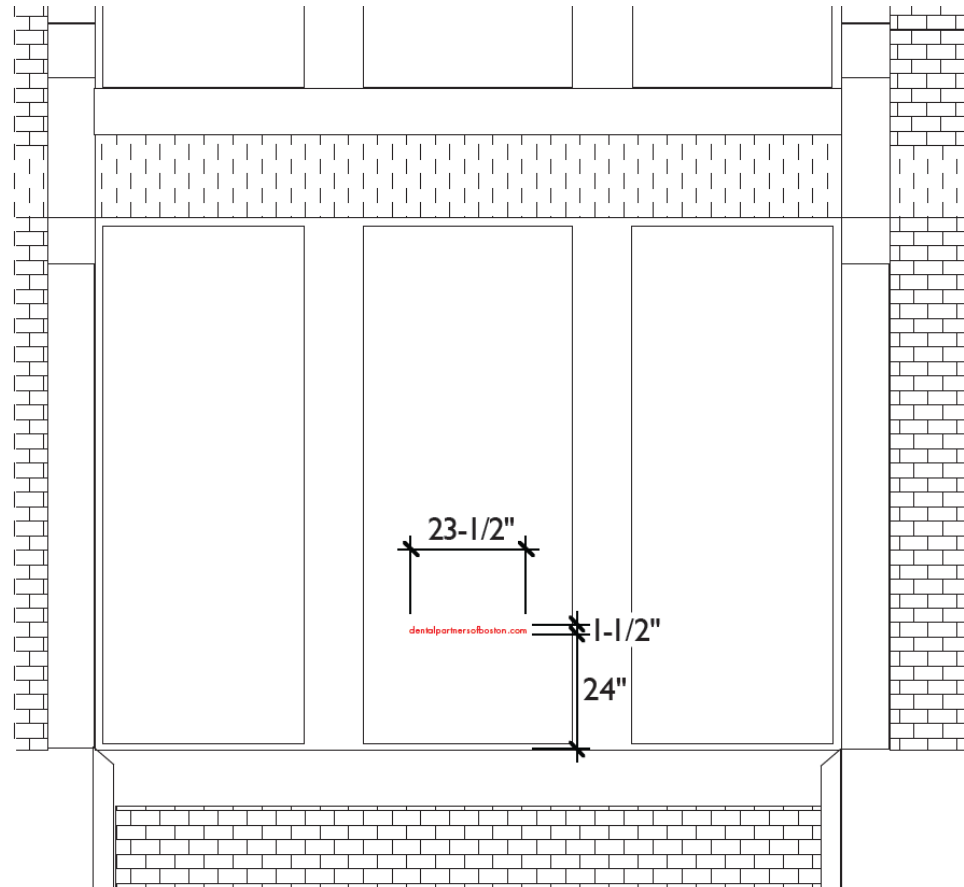
DENTAL PARTNERS OF BOSTON

2-D rendering of the structure at 46 Farnsworth Street with all graphics.





Low-profile Dental Partners website address www.dentalpartnersofboston.com:
the center of the southernmost group of three windows and the center of the northernmost group of three windows
(left of entry doors) and east to west on ally facade).



ELEVATION
SCALE: 1/4" = 1'-0"

ST C - VINYL ON GLASS

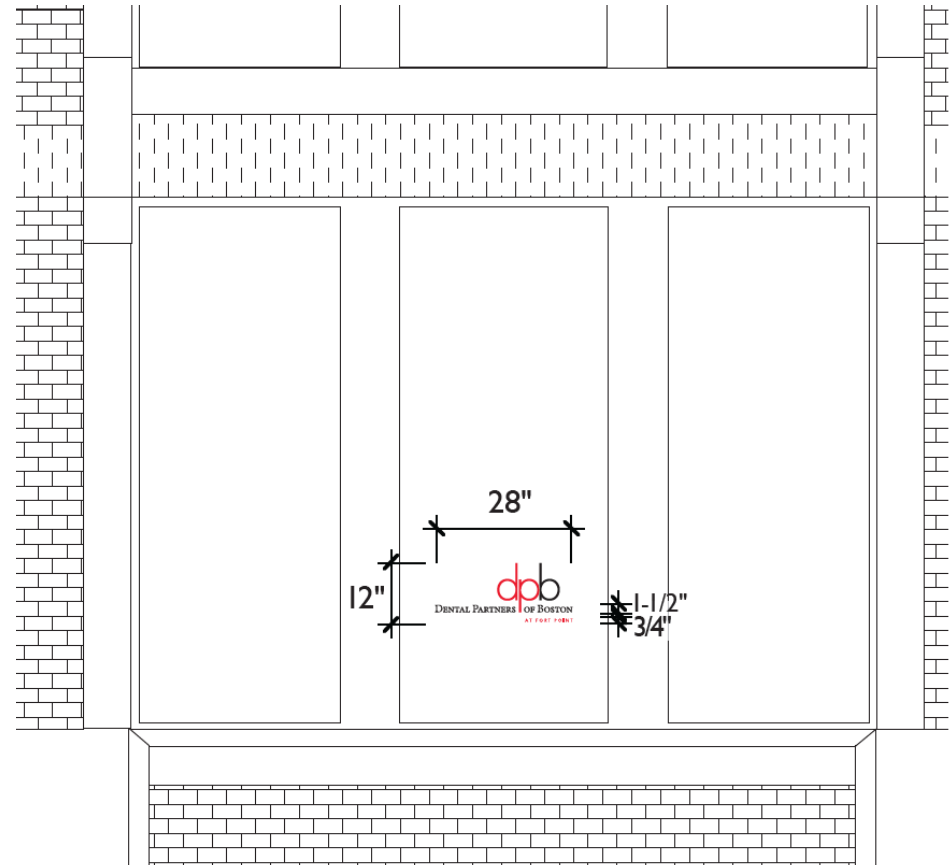
- Material: Digitally printed and imagecut vinyl.
- Finish: Black and PMS 185 C.
- Size: Website has a 1-1/2" cap height.
- Mounting: Subsurface to glass.
- Note: Website on 2nd and 8th window.

Dental Partners logo: the center window, central to the three sets of windows (north to south, and east to west on ally facade).



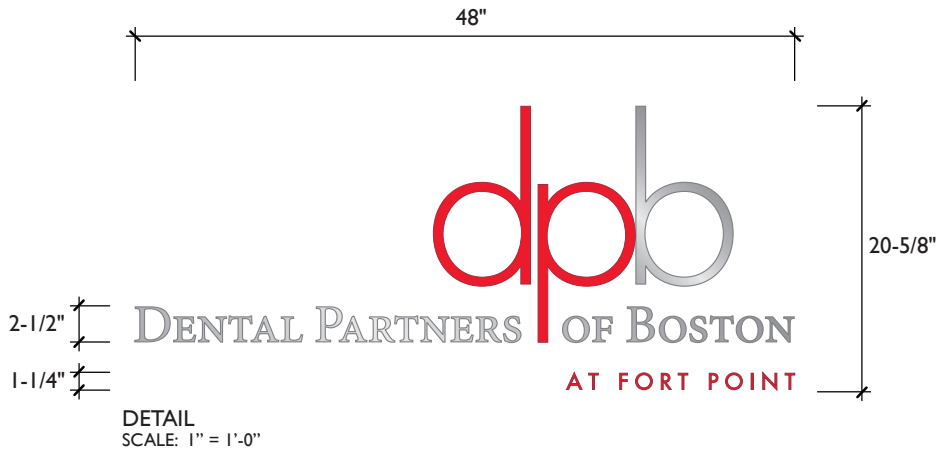
ST C - VINYL ON GLASS

- Material: Digitally printed and imagecut vinyl.
- Finish: Black and PMS 185 C.
- Size: Logo is 12" x 28" overall.
- Mounting: Subsurface to glass.
- Note: Logo on 5th window on front elevation.



ELEVATION
SCALE: 1/4" = 1'-0"

Dental Partners logo: center of middle transom lite.



ELEVATION
SCALE: 1/4" = 1'-0"



ST A CORPORATE ID OVER ENTRY DOOR

Material: 1" fabricated aluminum logo and 1/2" plate cut aluminum logo.

Finish: d p and tagline are painted PMS 185 C. Dental Partners of Boston and b have a satin face and matte edges

Size: 48" overall width

Mounting: VHB tape to glass with matching vinyl backer to hide mounting.

Dental Partners logo: Flat panel sign on cement on north end of building.

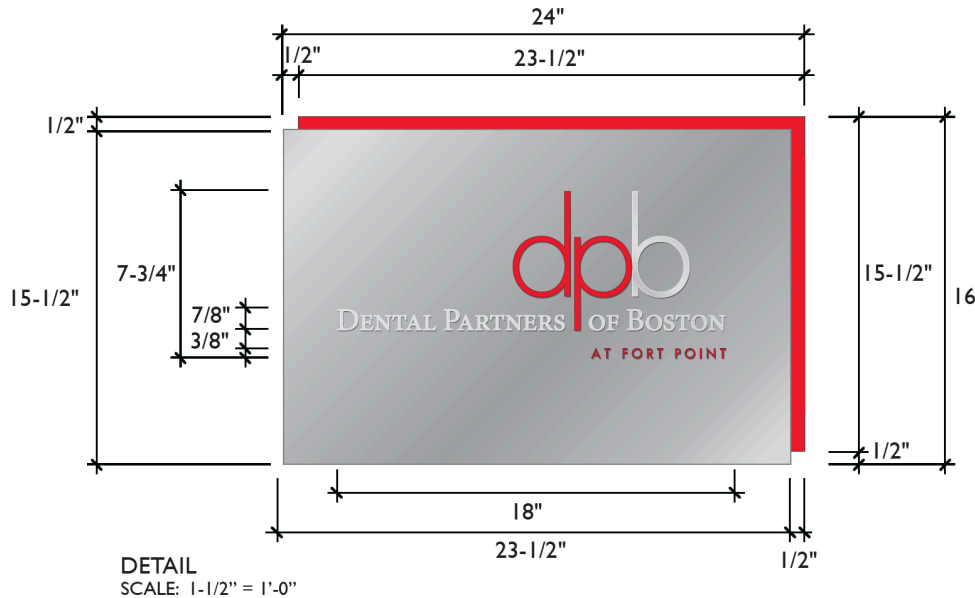
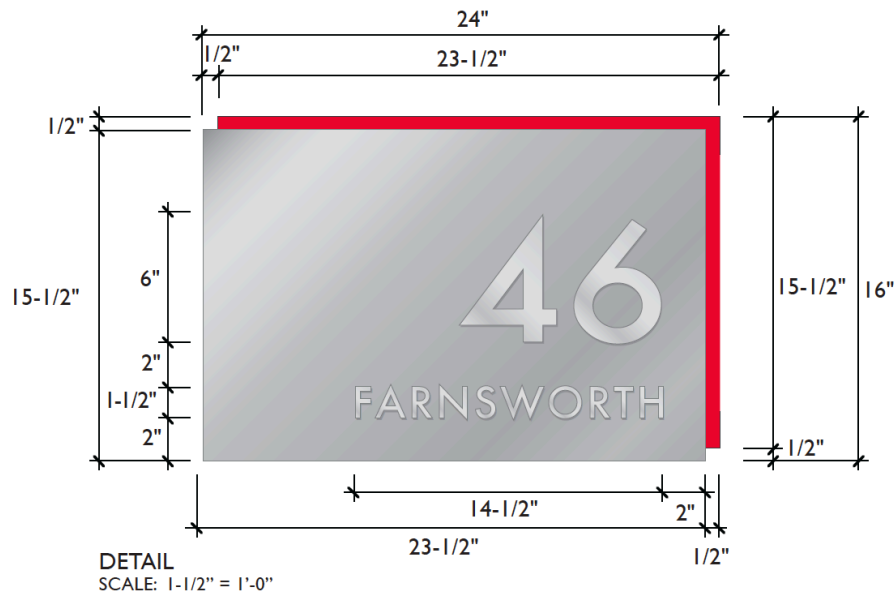


PHOTO COMP
SCALE: NTS

ST F - EXTERIOR LOGO PLAQUE

- Material: 23-1/2" x 15-1/2" x 1/8" painted aluminum back panel with a 23-1/2" x 15-1/2" x 1/8" satin stainless face panel with applied 1/4" stainless steel logo
- Finish: Back panel, d, p and tag line is painted PMS 185 C face and returns. Face panel is satin horizontal grain stainless steel face with matte edges. Logo b and Dental Partners of Boston has a polished face and matte edges.
- Size: 16" x 24" overall.
- Mounting: Stud mounted to building facade.

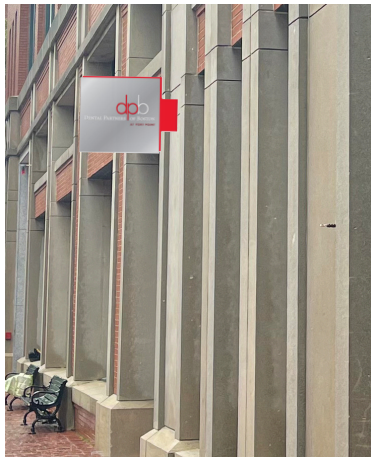
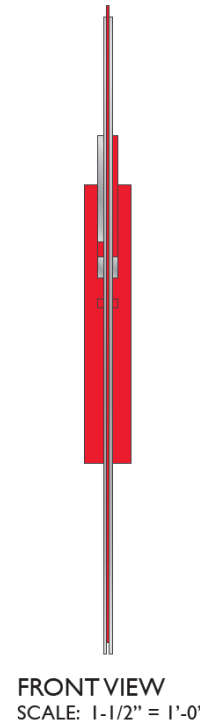
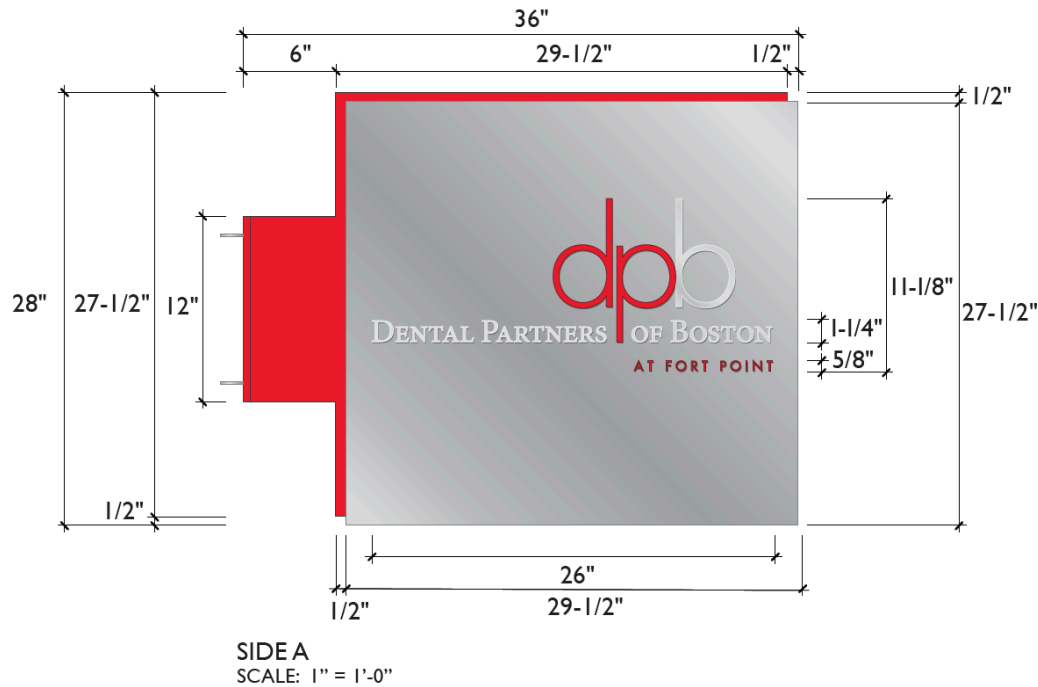
46 Farnsworth Flat panel sign to left of entry door on the face of the brick.



ST E - EXTERIOR ADDRESS PLAQUE

- Material: 23-1/2" x 15-1/2" x 1/8" painted aluminum back panel with a 23-1/2" x 15-1/2" x 1/8" satin stainless face panel with applied 1/8" polished stainless text.
- Finish: Back panel is painted PMS 185 C face and returns. Face panel is satin horizontal grain stainless steel face with matte edges. Text has a polished stainless face and matte returns.
- Size: 16" x 24" overall.
- Mounting: Stud mounted to building facade.

2-Sided Blade sign to the right (north) and above the entry door.



ST B - EXTERIOR DOUBLE SIDED FLAG SIGN

Material: 1/8" painted aluminum flag sign with two 29-1/2" x 27-1/2" 1/8" matte stainless faces with 26" x 11-1/8" x 1/4" painted aluminum logos. 3/8" stainless cap on front and bottom edge.

Finish: Flag sign and mounting bracket is painted PMS 185 C. Two faces are satin with a satin cap. Logos have a polished face and matte edges and painted PMS 185 C.

Size: 28" x 36" overall.

Mounting: Mechanically mounted with bracket and four screws to building facade