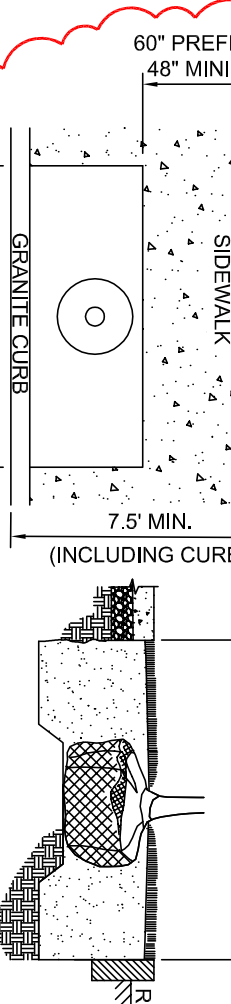
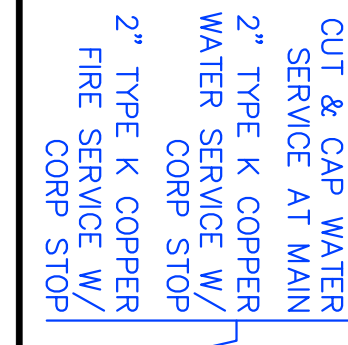


1. ACCOUNT NUMBER	1474291
2. PARCEL NUMBER	2506
3. WARD	10
4. PROPERTY LOCATION	20 NORWOOD STREET DORCHESTER
5. NEIGHBORHOOD	02122
6. ZIP CODE	DORCHESTER ST DORCHESTER, MA 02122
7. OWNER ADDRESS	20 NORWOOD STREET
8. OWNER TELEPHONE NO.	281-290-8466
9. TYPE OF PERMISE	8-FAMILY RESIDENTIAL
10. METER SIZE	3
11. INSIDE	YES
12. OUTSIDE	NO
13. TYPE OF BUILDING	THREE STORY STEEL & WOOD FRAME
14. SEWERAGE FLOWS	281-290-8466
15. LAND USE CODE	A BEDROOMS x 110 GRD = 1540 GRD

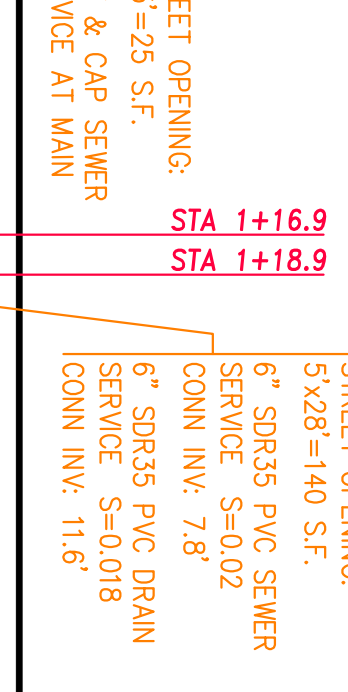
THIS PLAN HAS BEEN CALCULATED FROM INSTRUMENT SURVEY AND FROM RECORD INFORMATION ONLY. THE ABSENCE OR EXAGNERSS AND UTILITIES IS NEITHER INTENDED OR IMPLIED. THE CONTRACTOR TO FIELD VERIFY EXACT LOCATIONS OF ALL UTILITIES. CONTRACTOR TO NOTIFY DIG-SAFE (1-888-DIG-SAFE) AT LEAST 72 HOURS PRIOR TO CONSTRUCTION.



**STREET TREE PIT DETAIL**  
 NOTE:  
 1. TREE PIT TO BE A MINIMUM OF 24 SQUARE FEET.  
 2. PROVIDE 1/2" LONG X 3/8" WOODEN STRIPS EQUALY SPACED, 3 PER WHEEL TRACKS, DRIVE STRIPES AT AN ANGLE AND DRAIN SERVICE WATER SERVICE W/ CORP STOP.  
 3. CONTRACTOR SHALL PERFORM PERCOLATION TEST ON SUB-GRADE PRIOR TO PLANTING. IF TEST IS NOT PASSING, CONTRACTOR SHALL ADJUST SUB-GRADE ACCORDINGLY.



**STREET OPENING:**  
 5' X 8' = 90 S.F.  
 CUT & CAP WATER SERVICE AT MAIN  
 2" TYPE K COPPER WATER SERVICE W/ CORP STOP  
 2" TYPE K COPPER FIRE SERVICE W/ CORP STOP



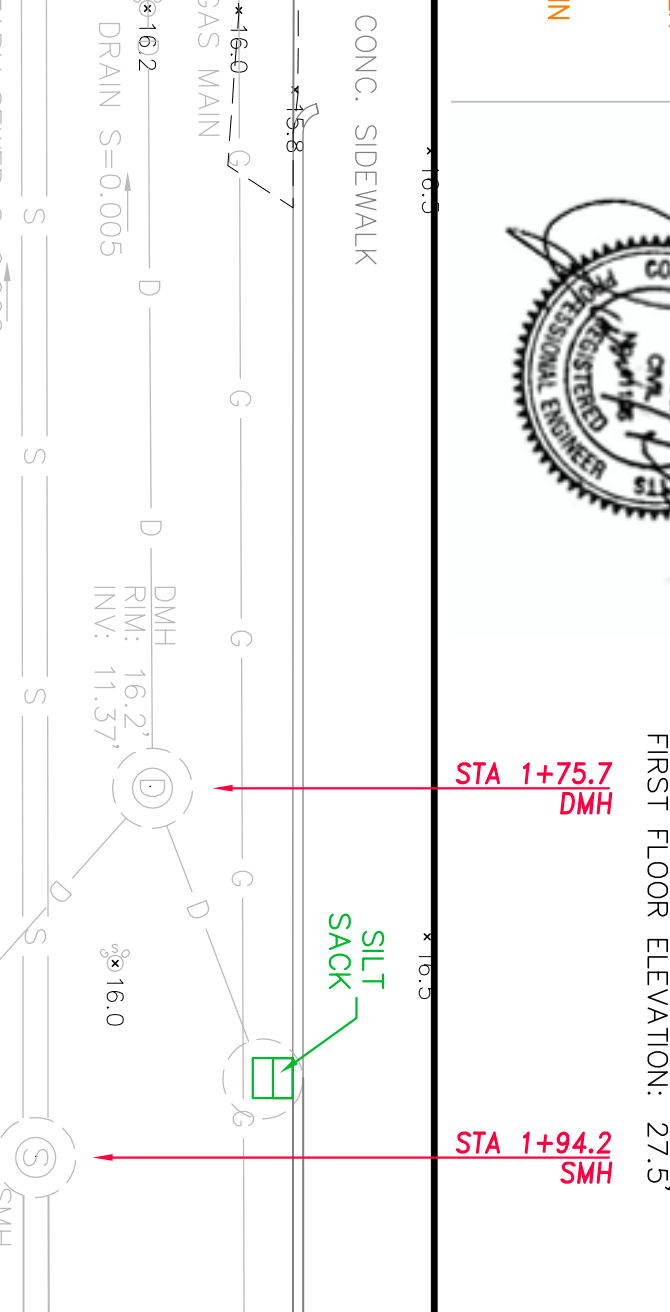
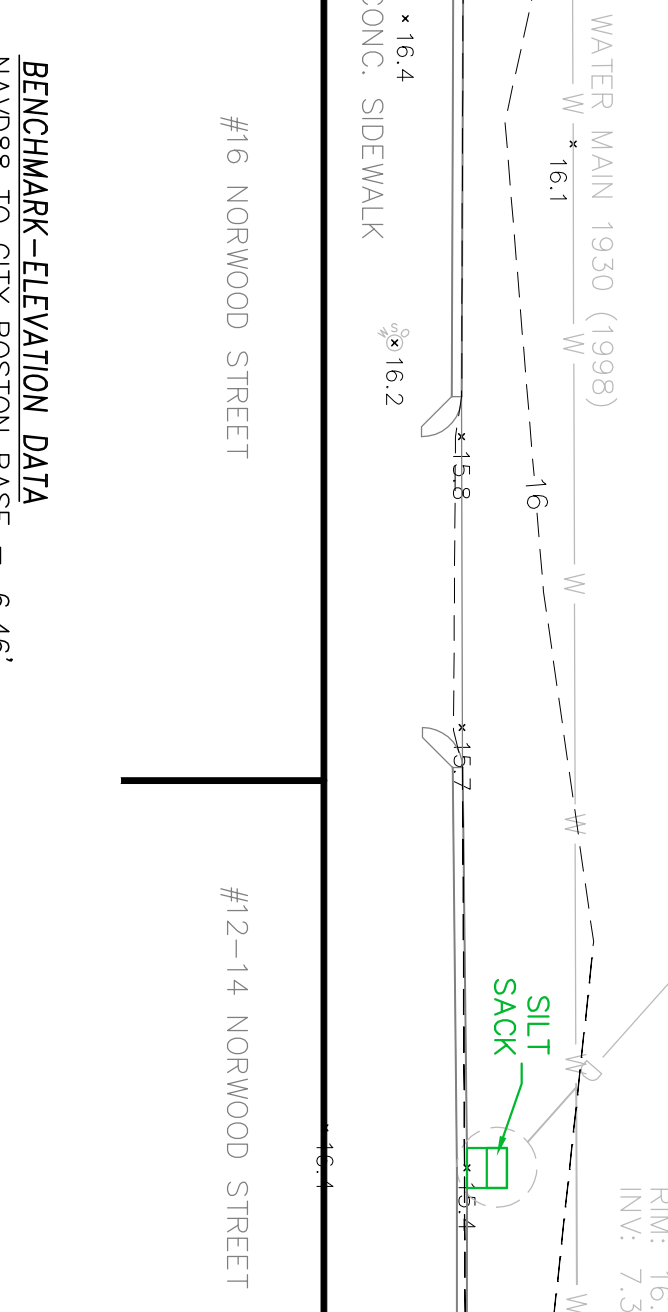
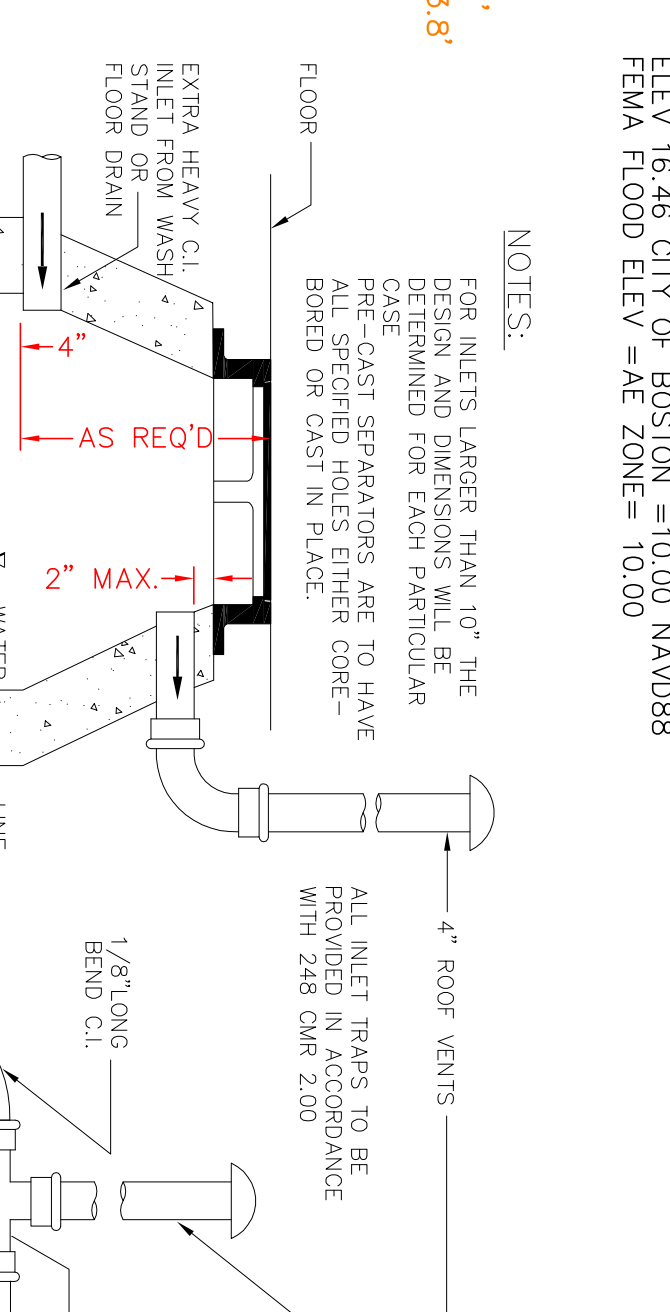
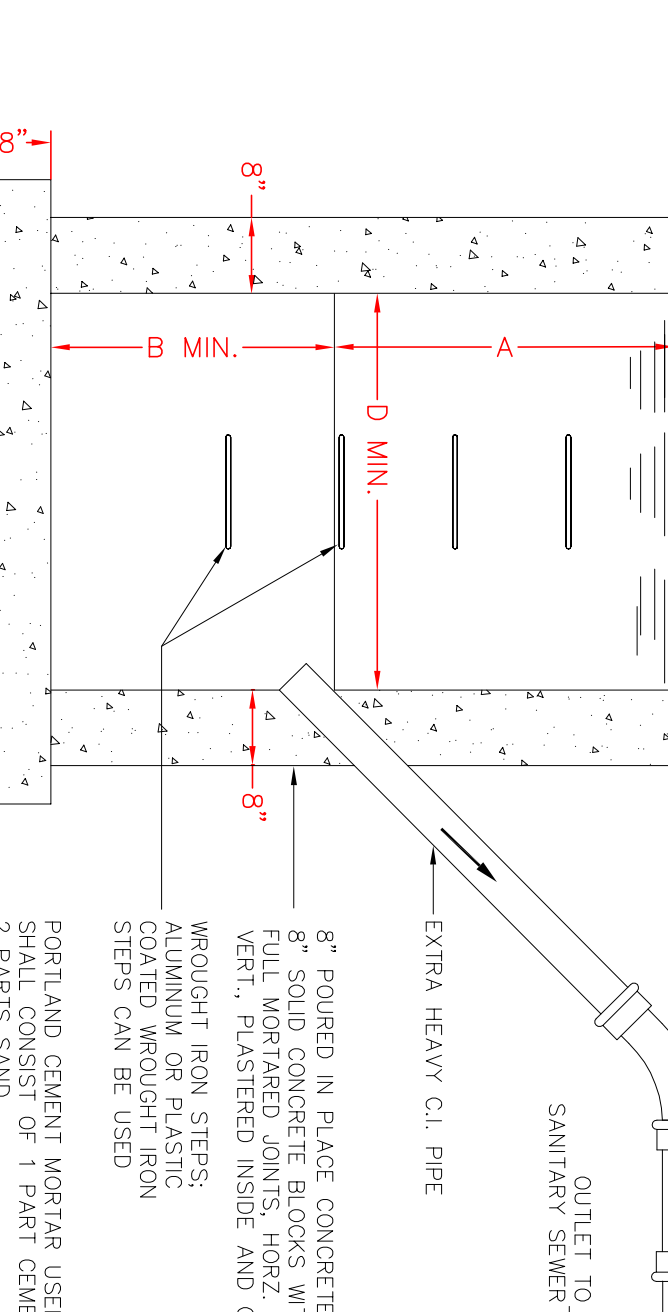
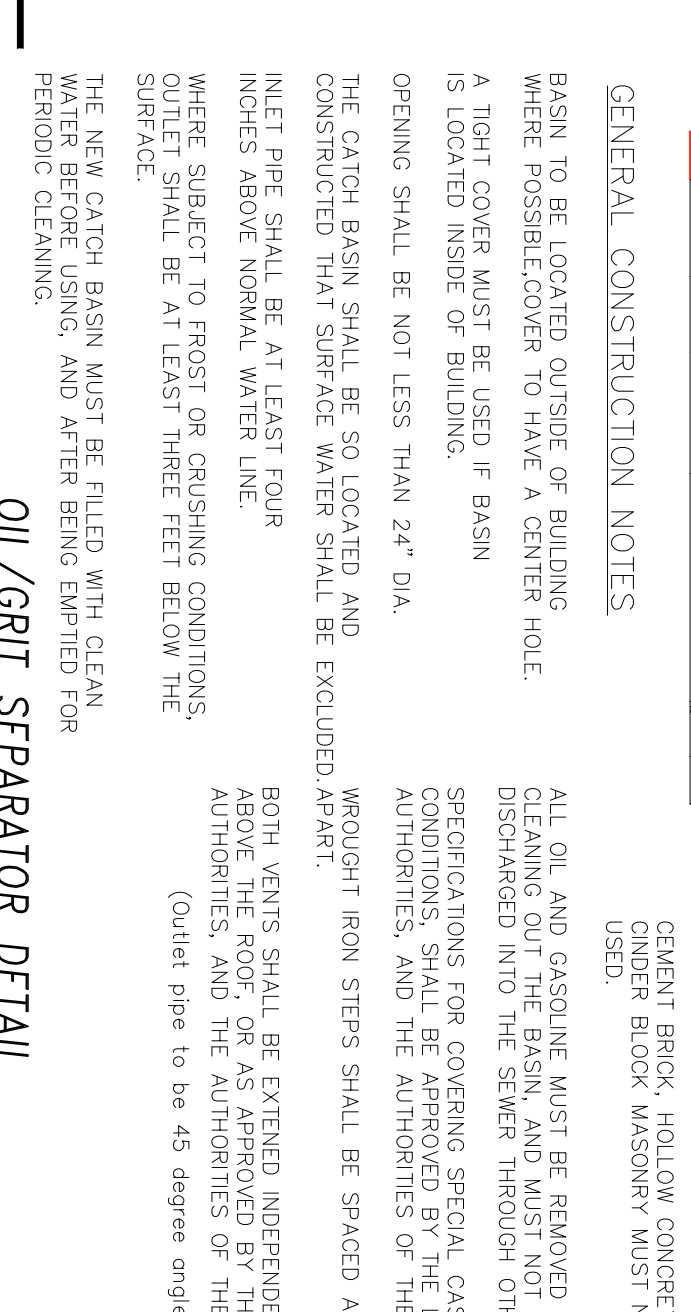
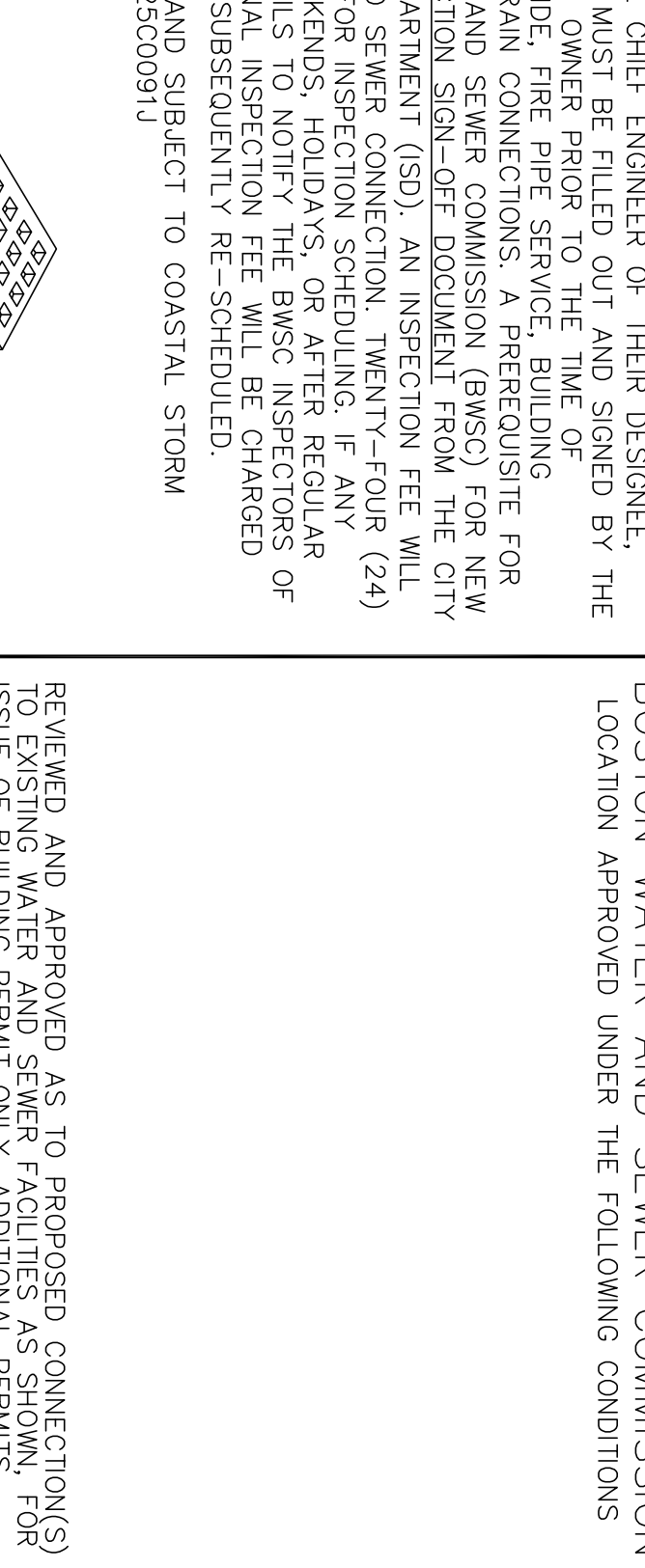
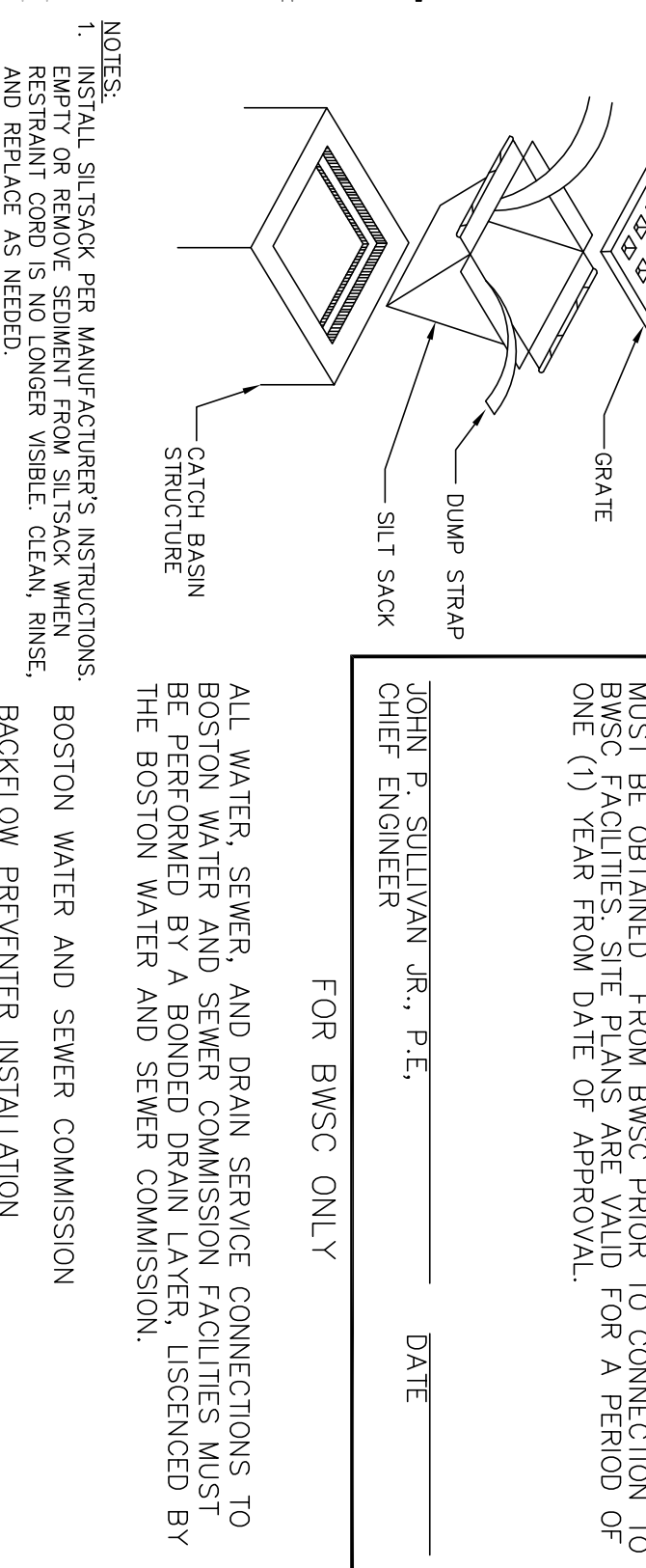
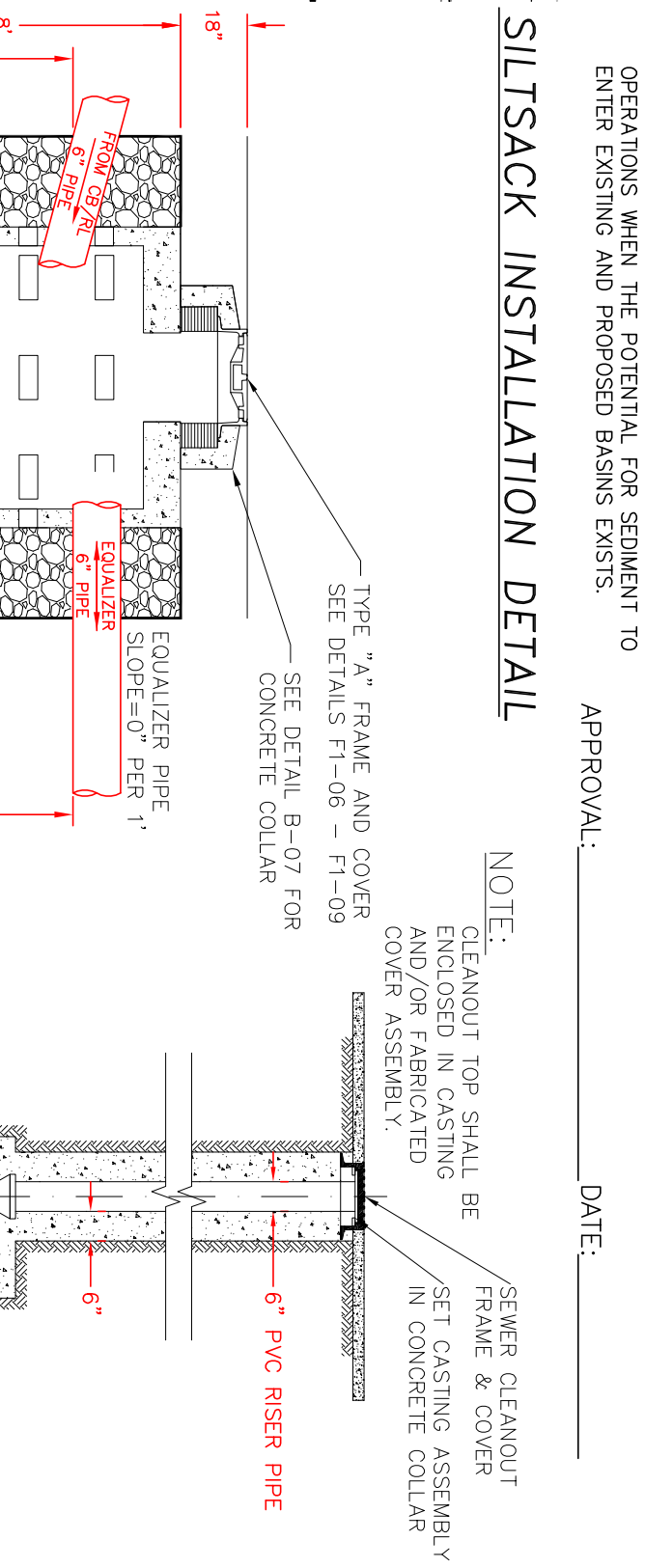
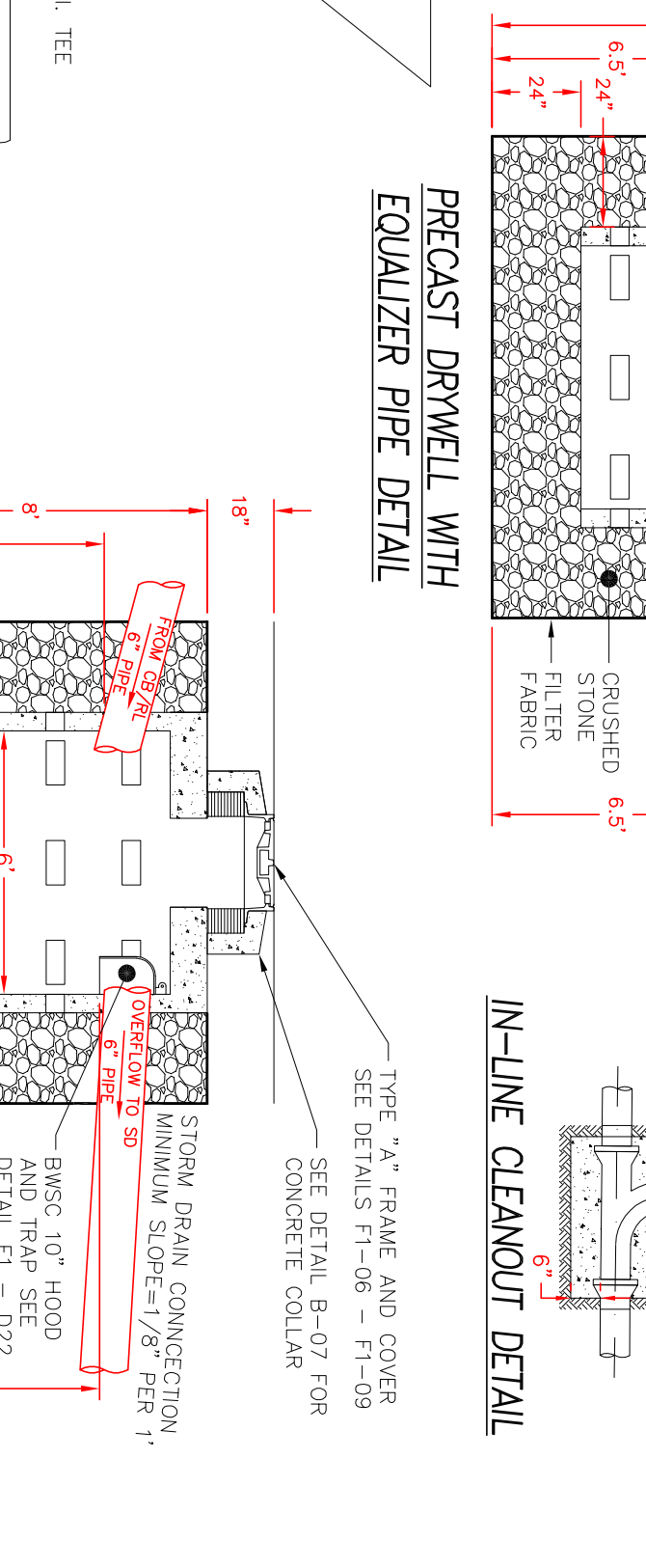
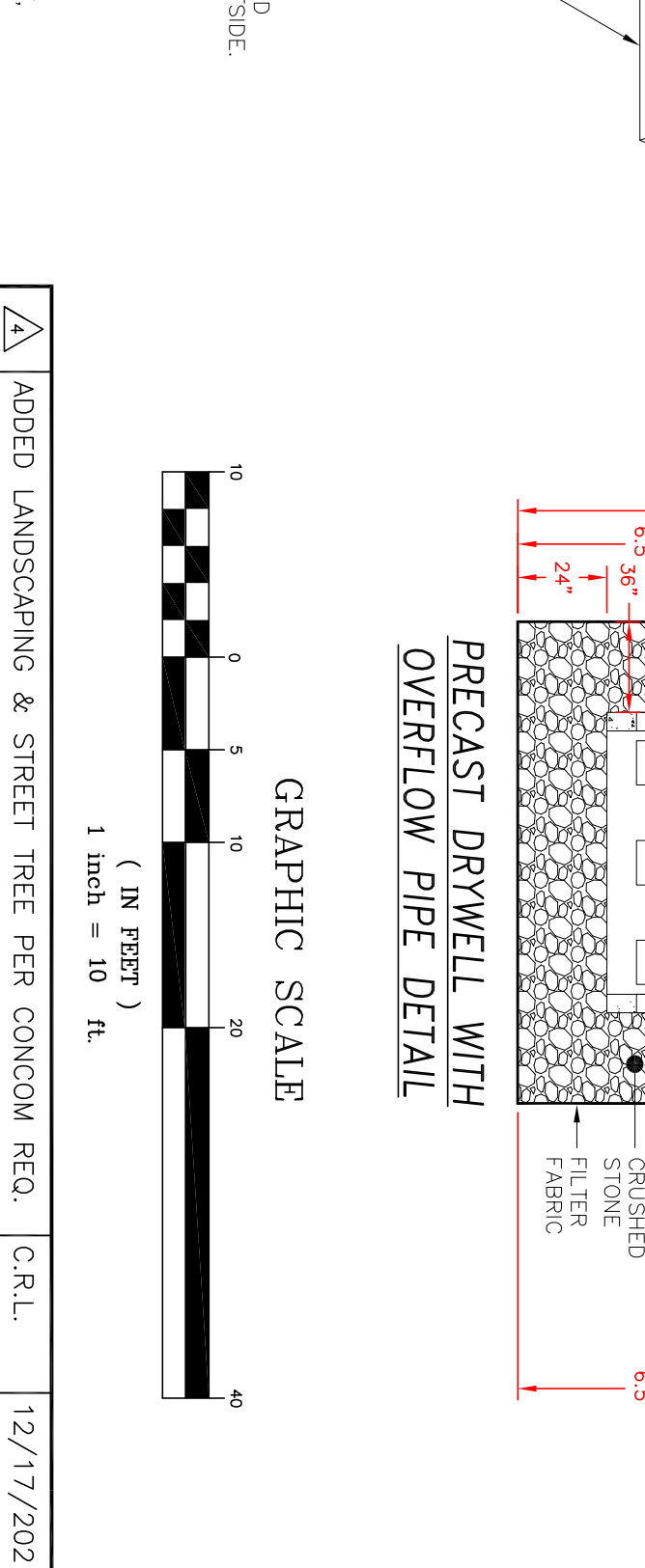
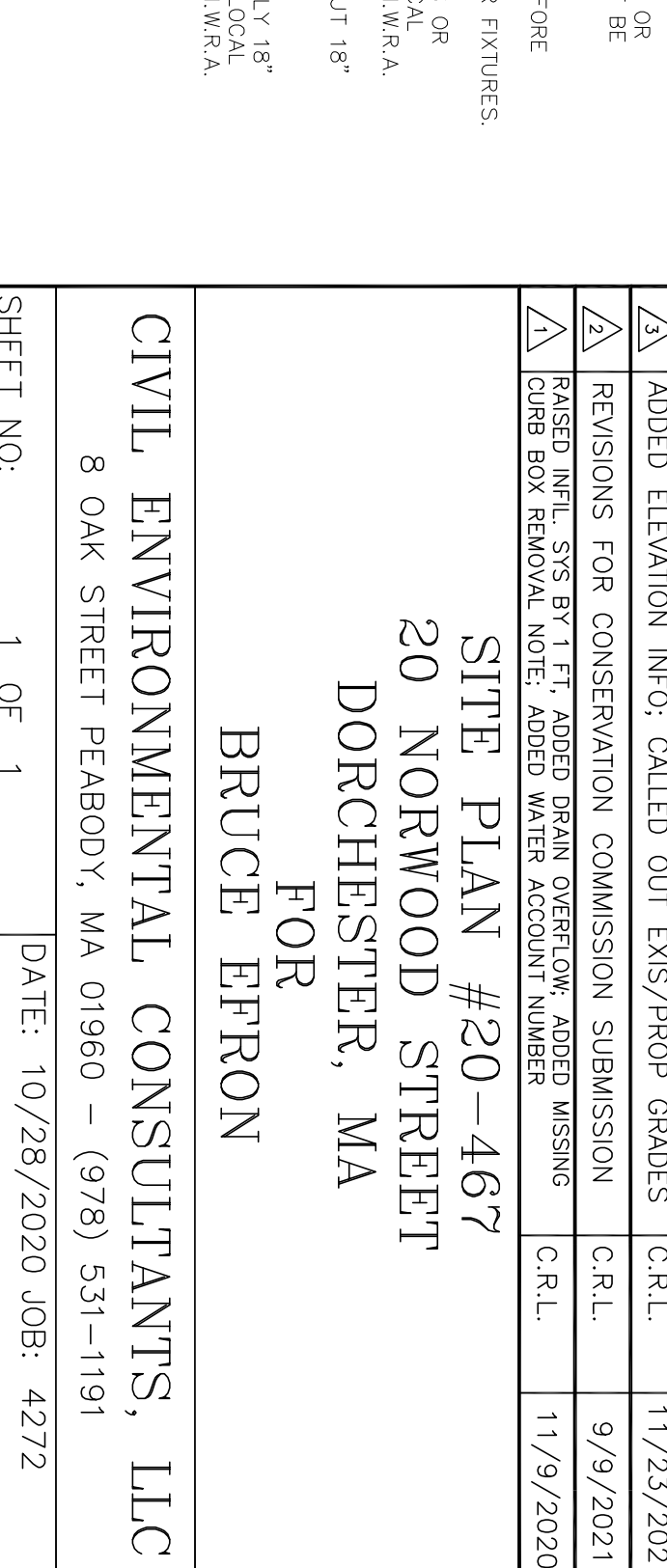
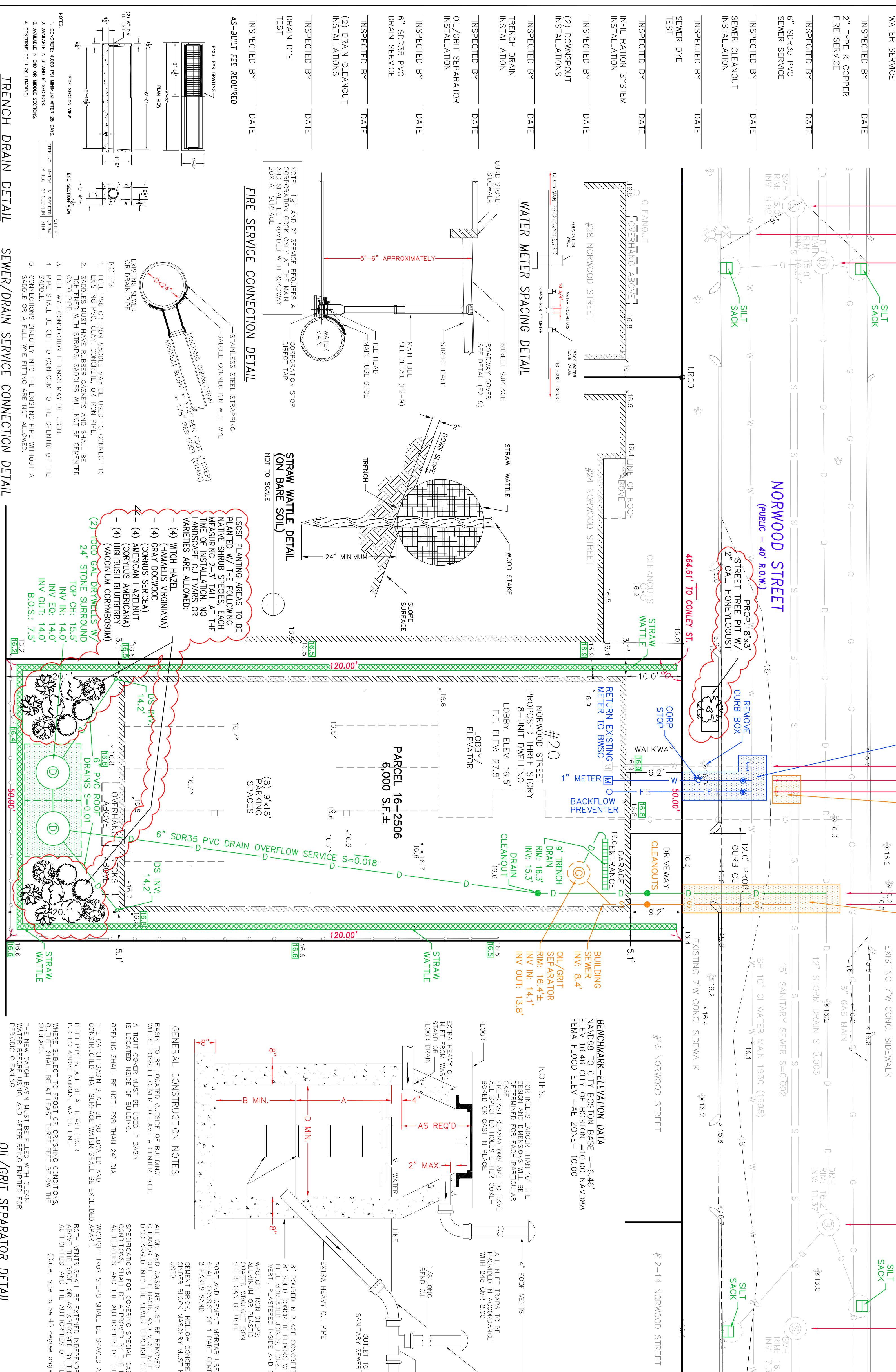
**STREET OPENING:**  
 5' X 5' = 25 S.F.  
 CUT & CAP SEWER SERVICE AT MAIN  
 6" SDR35 PVC SEWER CONN INV. 7.8  
 6" SDR35 PVC DRAIN CONN INV. 11.6

**DRAINAGE CALCULATIONS**  
 IMPERVIOUS AREA = 3815.6 S.F. ROOF AREA  
 IMPERVIOUS (STORED) 1" OF RUNOFF / 1/12 (3815.6 S.F.) = 318.0 CU. FT.  
 USE 1,000 GAL. DRYWELL - SEE DETAIL  
 119.6 CU. FT. WITH 2 FT. GRUSHED STONE AROUND  
 119.6 CU. FT. x 2 = 239.2 CU. FT. CHAMBER VOLUME  
 VOLUME COMPUTATION EXTERIOR GRUSHED STONE  
 2 x (10 FT. x 10 FT. x 6.5 FT.) = 1300.0 CU. FT.  
 1300.0 CU. FT. - 239.2 CU. FT. (CHAMBER VOLUME) = 1060.8 CU. FT.  
 1060.8 CU. FT. x 0.3 (VOIDS) = 318.2 CU. FT. VOLUME Voids STORAGE  
 239.2 CU. FT. CHAMBER VOLUME + 318.2 CU. FT. Voids STORAGE = 557.4 CU. FT.  
 557.4 CU. FT. TOTAL STORAGE > 318.0 CU. FT. RUNOFF CALCULATION

AFTER THE SITE PLAN IS SIGNED BY THE CHIEF ENGINEER OF THEIR DESIGNER, A GENERAL SERVICE APPLICATION (GSA) MUST BE FILED OUT AND SIGNED BY THE PROPERTY OWNER OR AN AGENT OF THE OWNER PRIOR TO THE TIME OF INSTALLATION OF DOMESTIC WATER SERVICE, FIRE PIPE SERVICE, BUILDING SANITARY SEWER OR BUILDING STORM DRAIN CONNECTIONS. A PREQUISITE FOR FILING A GSA WITH THE BOSTON WATER AND SEWER COMMISSION (BWS) FOR NEW CONSTRUCTION IS THE ROUGH CONSTRUCTION SIGN-OFF DOCUMENT FROM THE CITY OF BOSTON INSPECTOR'S DEPARTMENT (ISD). AN INSPECTION FEE WILL BE CHARGED FOR EACH NEW WATER AND SEWER CONNECTION. TWENTY-FOUR (24) HOURS ADVANCED NOTICE IS REQUIRED FOR INSPECTION SCHEDULING. FEASIBILITY STUDY AND THE CONTRACTOR FAILS TO NOTIFY THE BWS INSPECTORS OF CANCELLATION IN ADVANCE AN ADDITIONAL INSPECTION FEE WILL BE CHARGED TO THE CONTRACTOR WHEN THE JOB IS SUBSEQUENTLY RE-SCHEDULED.  
 NOTE: ENTER SITE IS LOCATED WITHIN LAND SUBJECT TO COASTAL STORM FLOWAGE PER FEMA FIRM MAP NO. 25025C0091J

BOSTON WATER AND SEWER COMMISSION  
 LOCATION APPROVED UNDER THE FOLLOWING CONDITIONS

REVIEWED AND APPROVED AS TO PROPOSED CONNECTION(S) TO EXISTING WATER AND SEWER FACILITIES AS SHOWN, FOR THE PROPOSED CONSTRUCTION. THIS APPROVAL IS VALID FOR ONE (1) YEAR FROM DATE OF APPROVAL.  
 JOHN P. SULLIVAN JR., P.E.  
 CHIEF ENGINEER  
 DATE: \_\_\_\_\_  
 FOR BWS ONLY



**TRENCH DRAIN DETAIL**  
 NOTES:  
 1. CONCRETE: 4000 PSI MINIMUM AFTER 28 DAYS  
 2. MANHOLE: 18" DIA. 6" SECTION  
 3. MANHOLE: 18" DIA. 6" SECTION  
 4. COVER: TO FIELD CONDITIONS

**SEWER/RAIN SERVICE CONNECTION DETAIL**  
 NOTES:  
 1. FULL PVC OR IRON SADDLE MAY BE USED TO CONNECT TO EXISTING SEWER OR DRAIN PIPE  
 2. EXISTING PVC, CLAY, CONCRETE, OR IRON PIPE  
 3. SADDLES MUST HAVE RUBBER GASKETS AND SHALL BE NOTIFIED WITH STRAPS. SADDLES WILL NOT BE GENERATED OUT OF THE OPENING OF THE OPENING OF THE SADDLE  
 4. PIPE SHALL BE CUT TO CONFORM TO THE OPENING OF THE SADDLE  
 5. CONNECTIONS DIRECTLY INTO THE EXISTING PIPE WITHOUT A SADDLE OR A FULL WIRE FITTING ARE NOT ALLOWED

**WATER METER SPACING DETAIL**  
 NOTES:  
 1. 1/2" AND 2" SERVICE REQUIRES A CORPORATION STOP ONLY AT THE MAIN END AT STREETFACE  
 2. 2" SERVICE REQUIRES A CORPORATION STOP ONLY AT THE MAIN END AT STREETFACE

**STREET TREE PIT DETAIL**  
 NOTE:  
 1. TREE PIT TO BE A MINIMUM OF 24 SQUARE FEET.  
 2. PROVIDE 1/2" LONG X 3/8" WOODEN STRIPS EQUALY SPACED, 3 PER WHEEL TRACKS, DRIVE STRIPES AT AN ANGLE AND DRAIN SERVICE WATER SERVICE W/ CORP STOP.  
 3. CONTRACTOR SHALL PERFORM PERCOLATION TEST ON SUB-GRADE PRIOR TO PLANTING. IF TEST IS NOT PASSING, CONTRACTOR SHALL ADJUST SUB-GRADE ACCORDINGLY.

**STREET OPENING:**  
 5' X 8' = 90 S.F.  
 CUT & CAP WATER SERVICE AT MAIN  
 2" TYPE K COPPER WATER SERVICE W/ CORP STOP  
 2" TYPE K COPPER FIRE SERVICE W/ CORP STOP

**STREET OPENING:**  
 5' X 5' = 25 S.F.  
 CUT & CAP SEWER SERVICE AT MAIN  
 6" SDR35 PVC SEWER CONN INV. 7.8  
 6" SDR35 PVC DRAIN CONN INV. 11.6

**DRAINAGE CALCULATIONS**  
 IMPERVIOUS AREA = 3815.6 S.F. ROOF AREA  
 IMPERVIOUS (STORED) 1" OF RUNOFF / 1/12 (3815.6 S.F.) = 318.0 CU. FT.  
 USE 1,000 GAL. DRYWELL - SEE DETAIL  
 119.6 CU. FT. WITH 2 FT. GRUSHED STONE AROUND  
 119.6 CU. FT. x 2 = 239.2 CU. FT. CHAMBER VOLUME  
 VOLUME COMPUTATION EXTERIOR GRUSHED STONE  
 2 x (10 FT. x 10 FT. x 6.5 FT.) = 1300.0 CU. FT.  
 1300.0 CU. FT. - 239.2 CU. FT. (CHAMBER VOLUME) = 1060.8 CU. FT.  
 1060.8 CU. FT. x 0.3 (VOIDS) = 318.2 CU. FT. VOLUME Voids STORAGE  
 239.2 CU. FT. CHAMBER VOLUME + 318.2 CU. FT. Voids STORAGE = 557.4 CU. FT.  
 557.4 CU. FT. TOTAL STORAGE > 318.0 CU. FT. RUNOFF CALCULATION

**CIVIL ENVIRONMENTAL CONSULTANTS, LLC**  
 8 OAK STREET PEABODY, MA 01960 - (978) 531-1191  
 SHEET NO: 1 OF 1  
 DATE: 10/28/2020 JOB: 4272  
 DRAWN BY: C.R.L.