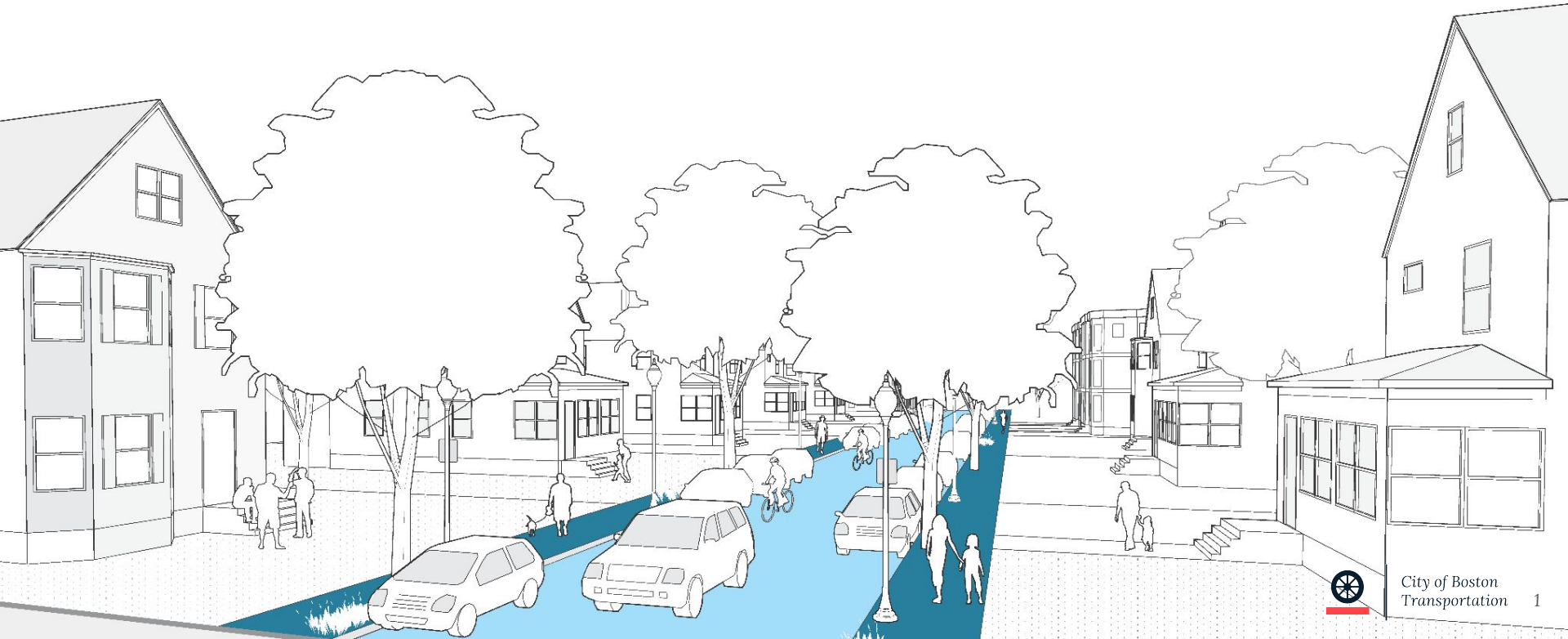


# WELCOME TO THE MORELAND ST. / MT. PLEASANT AVE. VIRTUAL MEETING

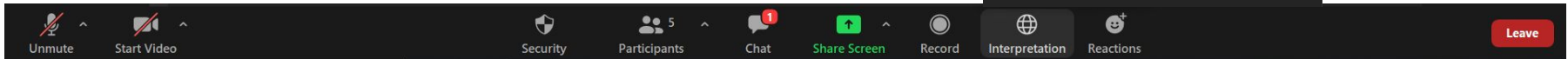
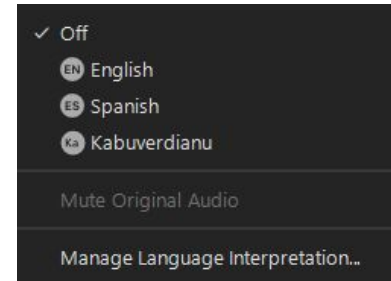
*The presentation will begin in a few minutes.*



# Welcome! ¡Bienvenidos!

For interpretation in Spanish:

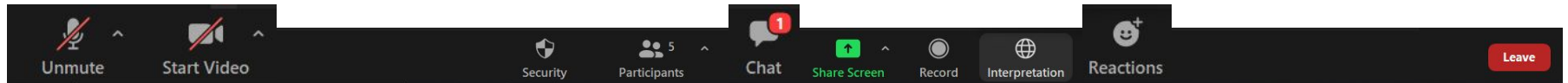
1. Go to control bar at the bottom of the screen and Click "Interpretation"
2. Next, click on the language that you would like to hear.
3. You now have access to the Spanish meeting



# Welcome!

This meeting **will be recorded**.

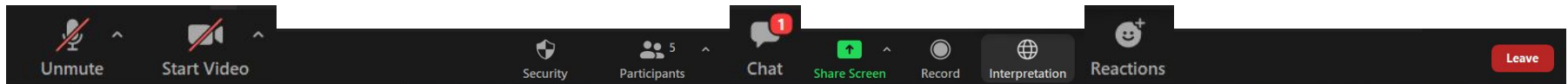
Update your name in Zoom to include your preferred name and your pronouns.



# Welcome!

Your microphones are turned off to start. You will need to unmute to speak. Joining via phone? Press \*6 to unmute.

You can use non-verbal feedback options. Raise your hand or leave a message in the chat box if you have a question. If you called into the meeting, use \*9 to raise your hand.





# Neighborhood Slow Streets **MORELAND STREET / MT. PLEASANT AVENUE**

---

*November 10, 2021  
via Zoom*

# Hi!



**Hannah Fong (she/her)**

Planner, Active Transportation  
Boston Transportation Department  
hannah.fong@boston.gov



**Dan Merrow (he/him)**

Sr. Engineer, Active Transportation  
Boston Transportation Department  
daniel.merrow@boston.gov



**Stefanie Seskin (she/her)**

Active Transportation Director  
Boston Transportation Department  
stefanie.seskin@boston.gov

# Moreland Street/ Mt. Pleasant Avenue zone



# Tonight's meeting

- ▶ Review what we have done so far
- ▶ Share what to expect throughout the zone
- ▶ Updated concepts?
- ▶ Perrin?
- ▶ Update on next steps



# What is Neighborhood Slow Streets?

- ▶ Focus on safety on a connected network of small, *neighborhood streets*
- ▶ Built design changes to *improve safety and slow speeds*
- ▶ Posted speed limit of **20 MPH**



# How we approach design

---

**Engage**  
residents in  
prioritizing **key**  
**focus areas**

**Prioritize** people  
walking and  
biking, older  
adults, youth,  
and people with  
disabilities

Reduce crashes  
that lead to  
serious **injury**  
or **fatality**

# How we heard from you

---

## BY MAIL

- ▶ letter and survey question mailed in late August 2020

## INTERACTIVE SURVEY

- ▶ open through December 2020, published in English, Spanish, and Cape Verdean Creole

## OUTDOOR WORKSHOP

- ▶ September 12, 2020 at Gertrude Howes Playground
- ▶ October 3, 2020 at Mount Pleasant Playground

## VIRTUAL MEETING

- ▶ May 6, 2021 via Zoom

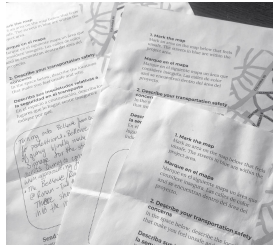
## ADDITIONAL FEEDBACK

- ▶ Online feedback form, phone calls with you, and emails with you



# How we got here

## YOUR LETTERS, COMMENTS



## OUR OBSERVATIONS



## DESIGN CONCEPTS



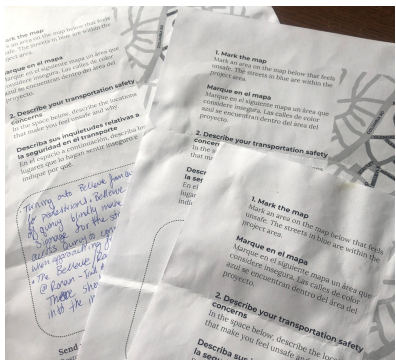
*We shared these concepts in May 2021 and accepted comments through the summer.*



## DESIGN CONCEPTS



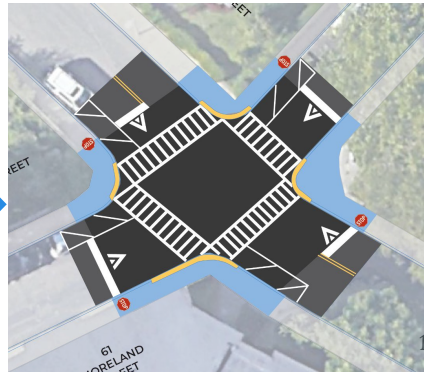
## YOUR LETTERS, COMMENTS



## ENGINEERING REVIEW



## INITIAL DESIGN







**THROUGHOUT THE ZONE**

# “Gateway” signs and markings

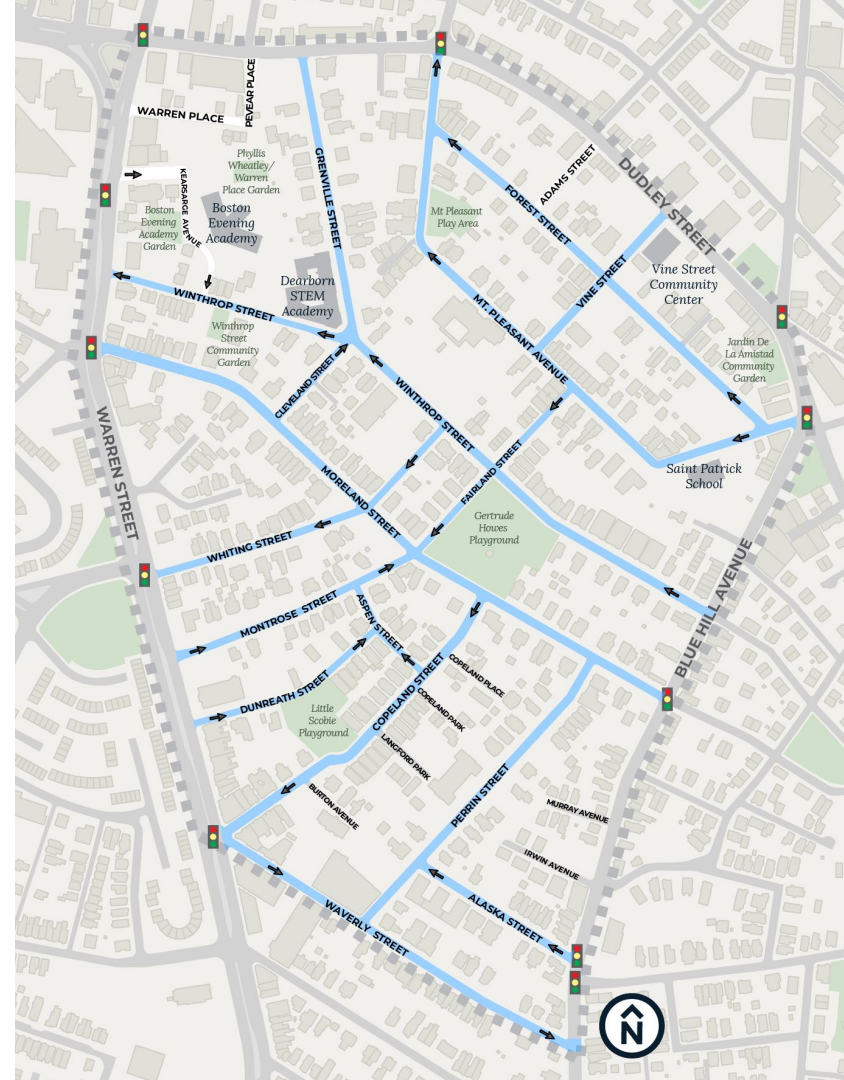
- ▶ Let people know they’re in a Slow Zone
- ▶ 20 MPH signs
- ▶ Supplemental “20 MPH” pavement marking





# Add speed humps on many streets

- ▶ Every 150' to 250'
- ▶ Not in front of driveways
- ▶ No impact on parking



# Speed humps are not speed bumps



**YES!** Gradual taper up and down, 12 to 14 feet long



**NO!** Abrupt, hard bump, 3 to 4 feet long

# Speed hump considerations

1. Hills
2. Curved streets
3. Emergency needs

*We cannot put speed humps on steep sections of streets.*



# Speed hump considerations

1. Hills
2. Curved streets
3. Emergency needs

*We cannot put speed humps on or near curves. Drivers won't have enough advance visibility of them.*





# Speed hump considerations

1. Hills
2. Curved streets
3. **Emergency needs**



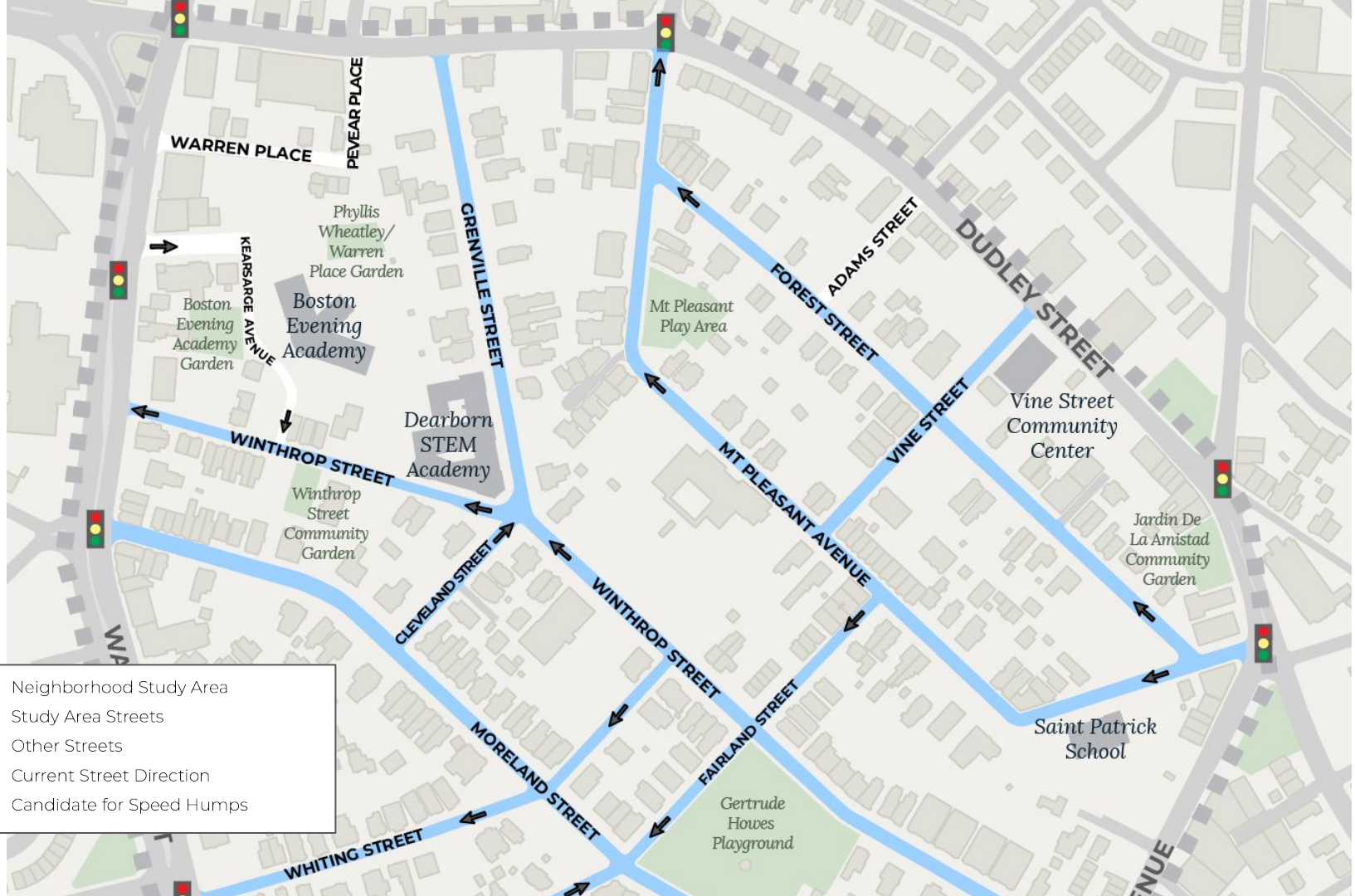
*We follow guidance from emergency responders to plan how many speed humps we can build. We balance everyday safety needs with minimizing response times.*

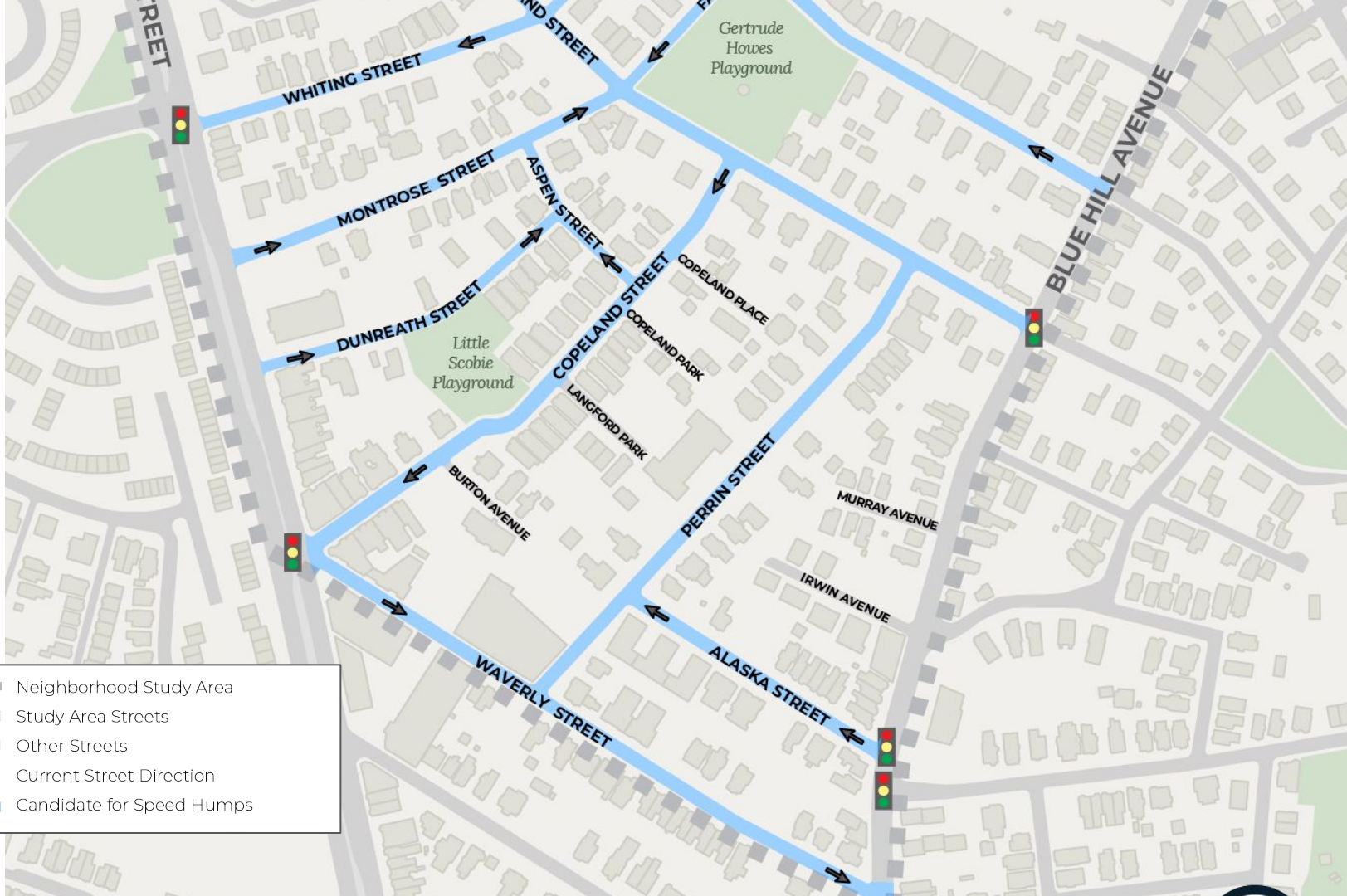
# We are considering speed humps on these streets.

- ▶ **Blue areas** indicate potential speed humps segments.
- ▶ Segments in white are not eligible for speed humps.
- ▶ After the design review process, we may not put speed humps on all streets.









- ■ ■ Neighborhood Study Area
- ▭ Study Area Streets
- ▬ Other Streets
- ← Current Street Direction
- ▬ Candidate for Speed Humps

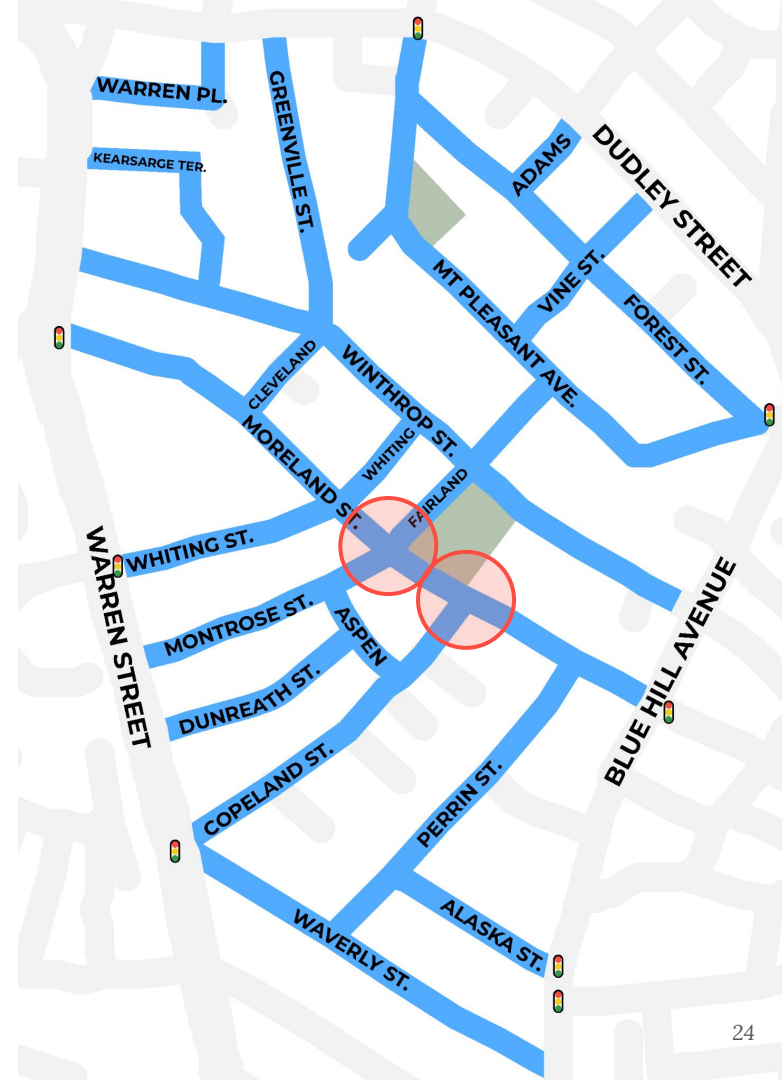




# FOCUS AREA 1: MORELAND STREET

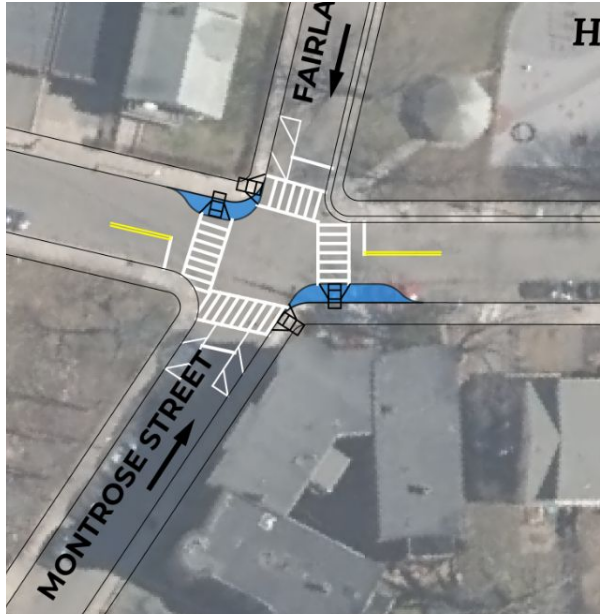
# We're focusing here because:

- ▶ You told us that crossing the street does not feel safe
- ▶ It is hard to see other people crossing the street at the intersection
- ▶ Gertrude Howes Playground is an important place for the community

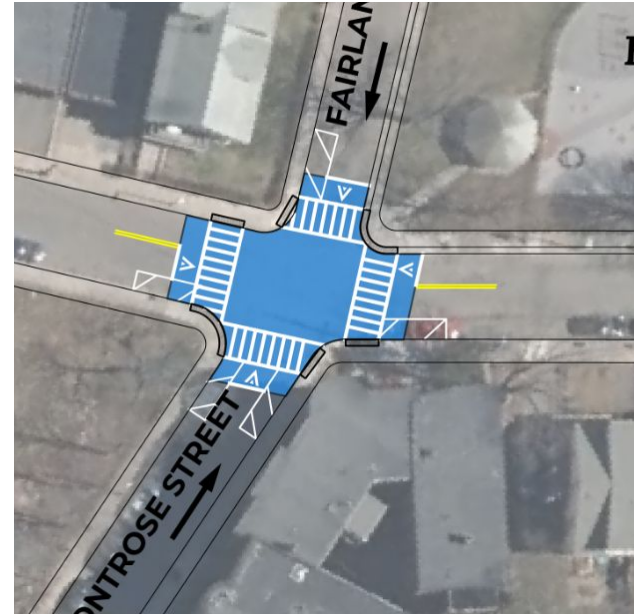


# We shared two ideas for Moreland at Fairland

Option A:  
Curb extensions

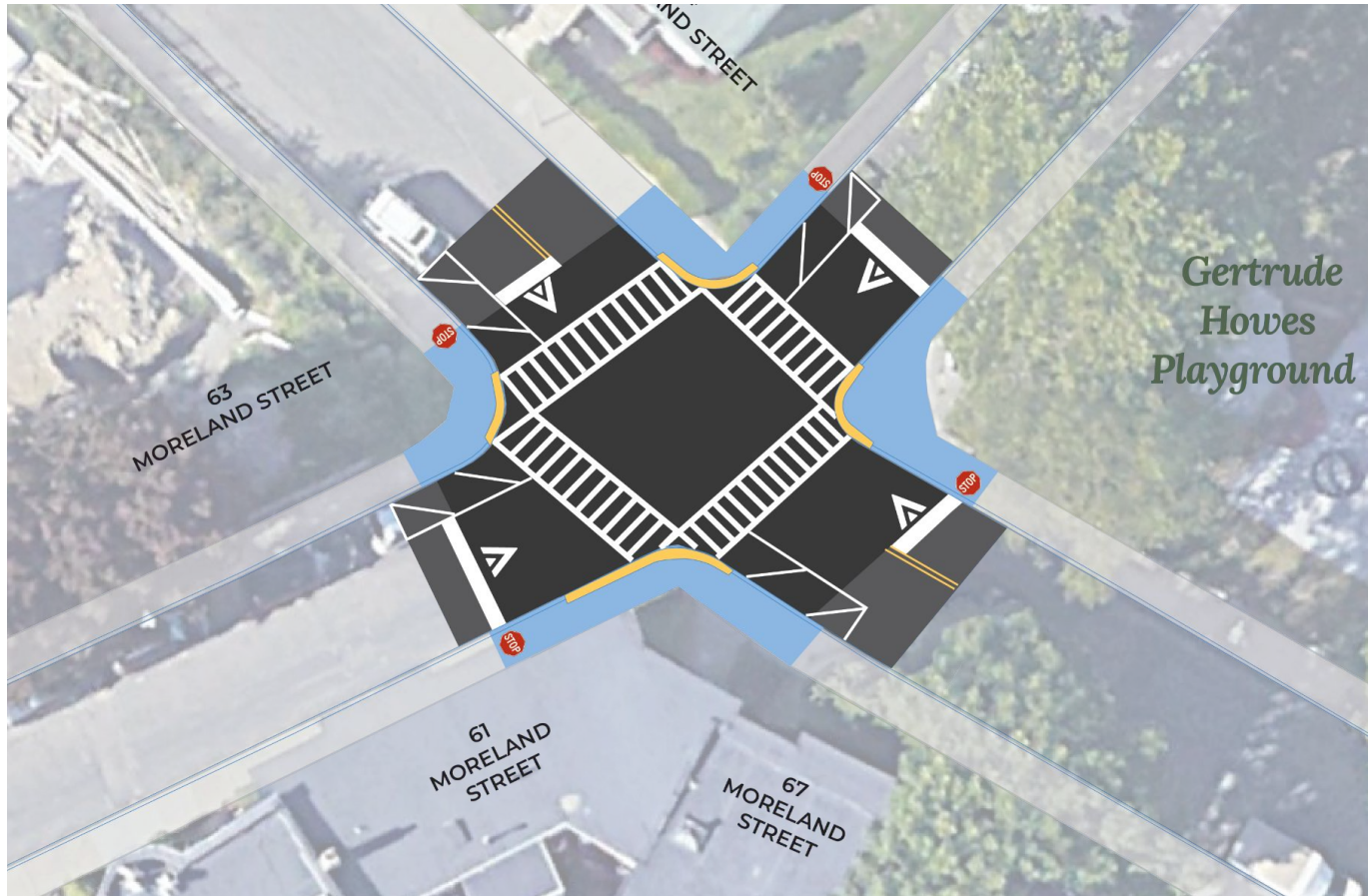


Option B:  
Raised intersection



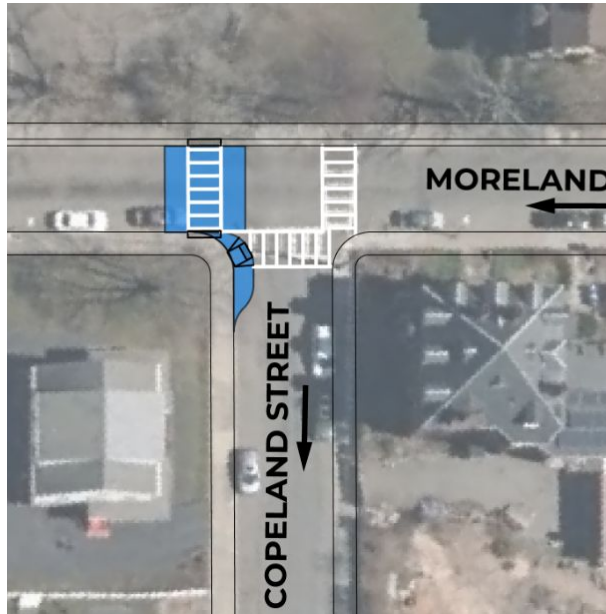


# Initial design: raised intersection

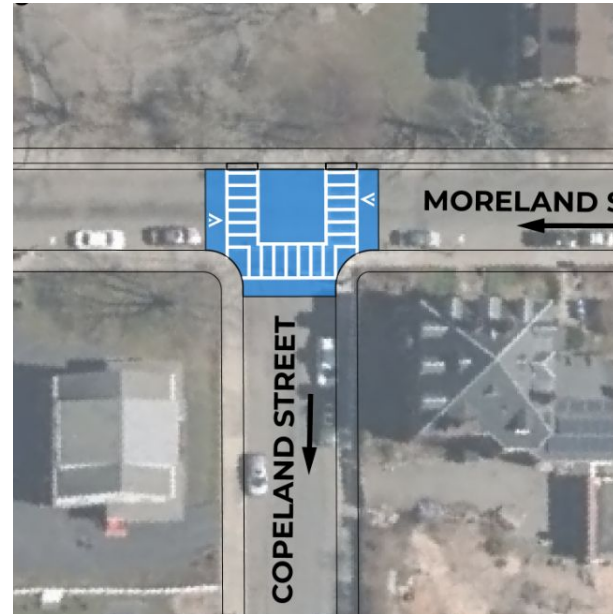


# We shared two ideas for Moreland at Copeland

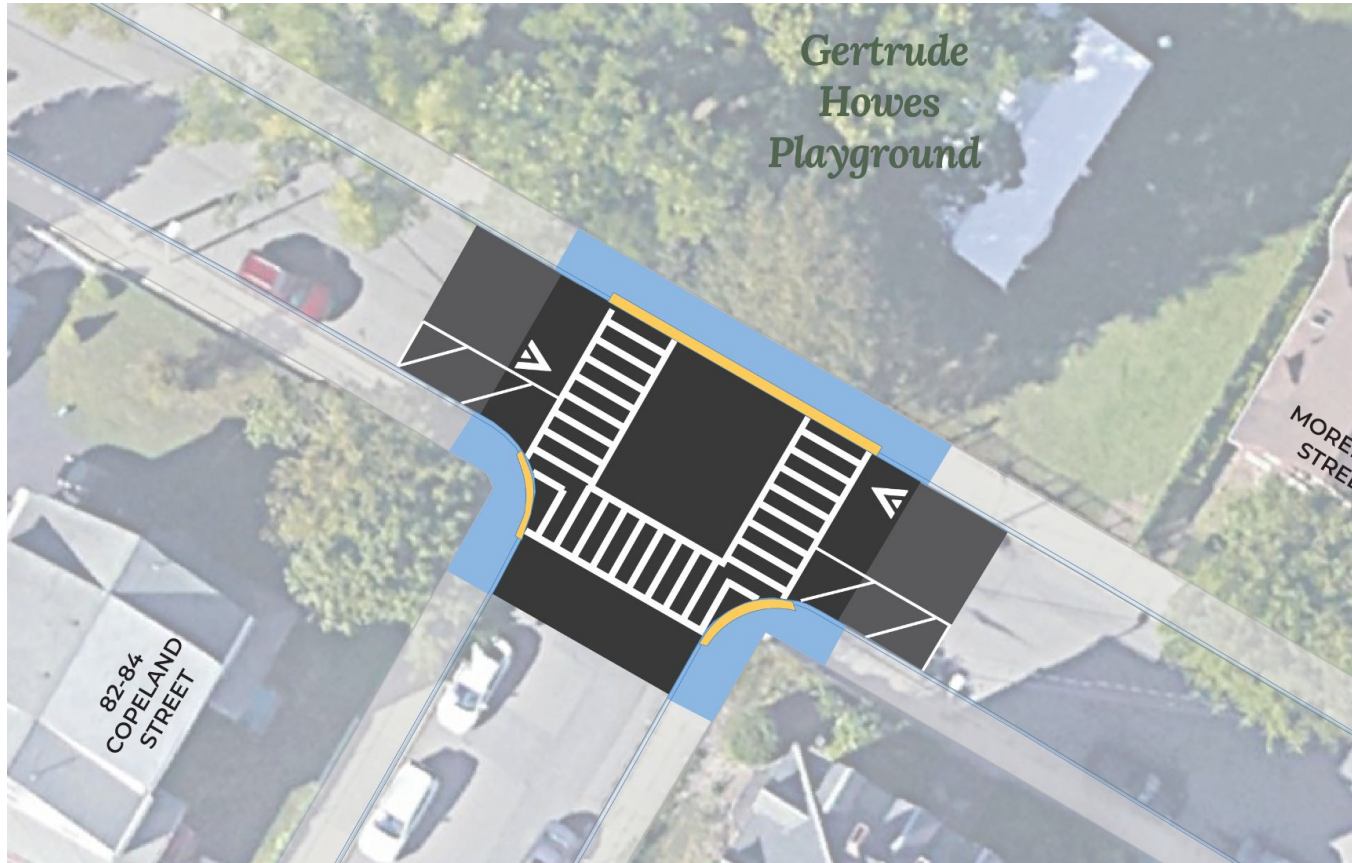
Option A:  
*Raised crosswalk*



Option B:  
*Raised intersection*



# Initial design: raised intersection

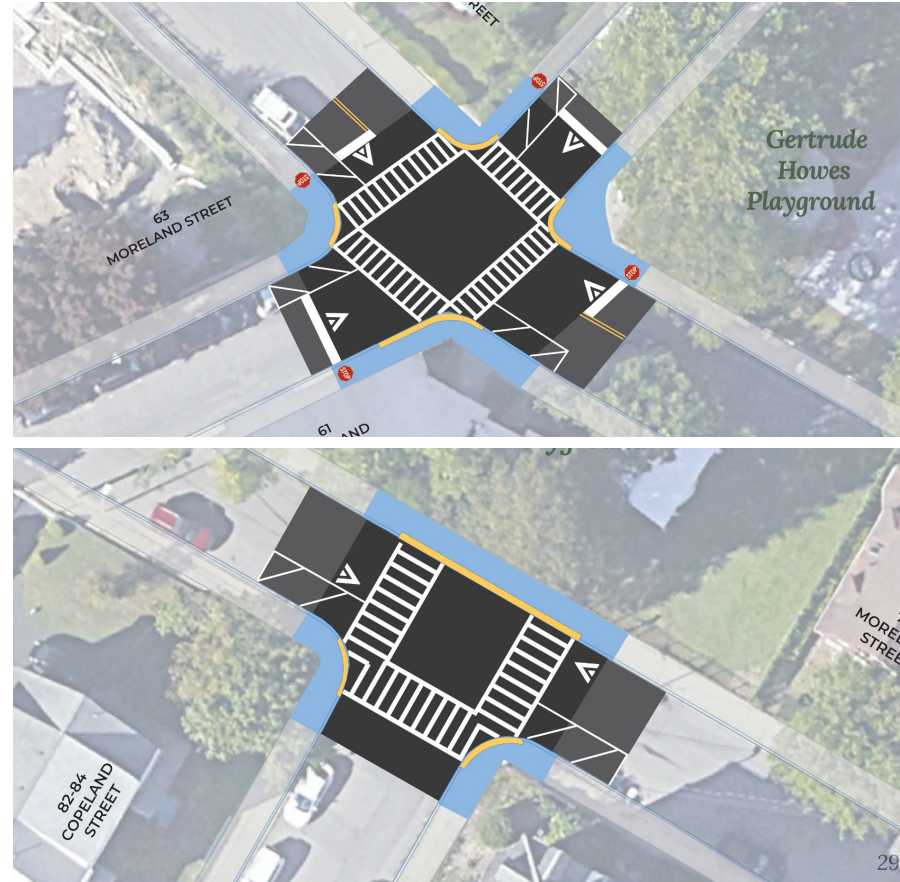




# About these raised intersections

To keep these crosswalks safe for everyone, we need to restrict some parking. This will help drivers and pedestrians see each other.

- ▶ You will not be allowed to park on the crosswalk.
- ▶ You will not be able to park approaching the raised intersection on Moreland, Fairland, and Montrose.

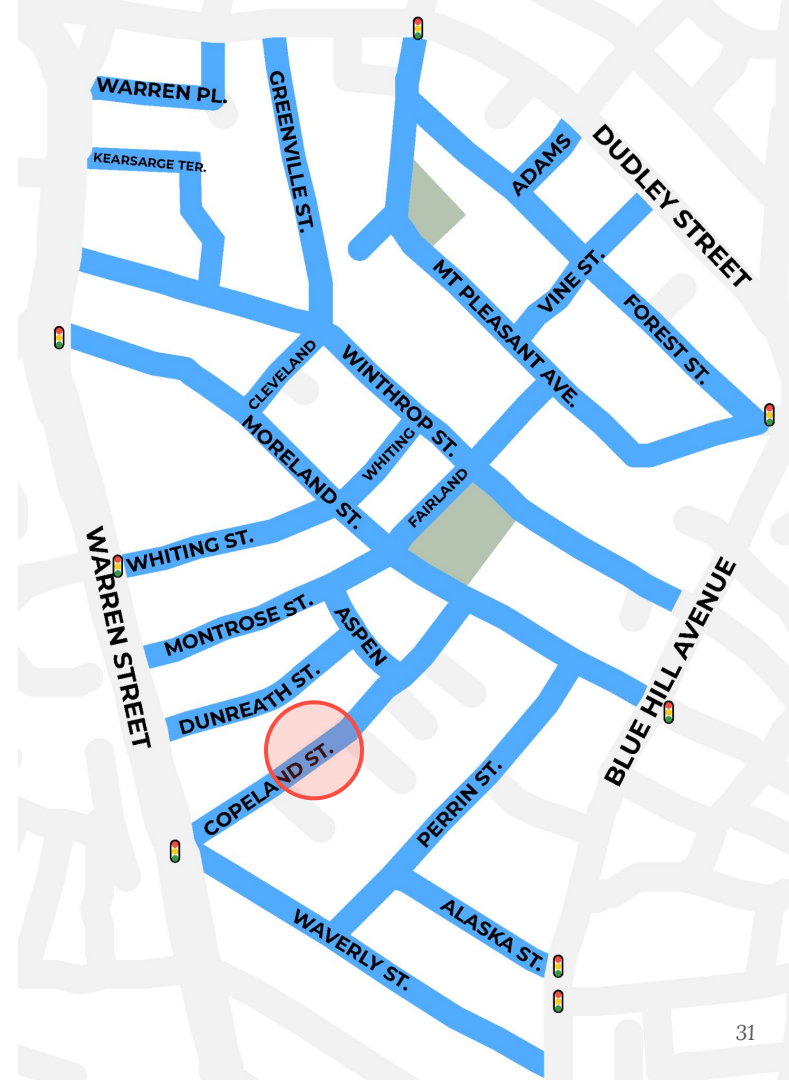




# FOCUS AREA 2: COPELAND STREET

# We're focusing here because:

- ▶ People driving cannot see people crossing to the park
- ▶ There's no crosswalk to the park
- ▶ The bend in the street causes visibility issues

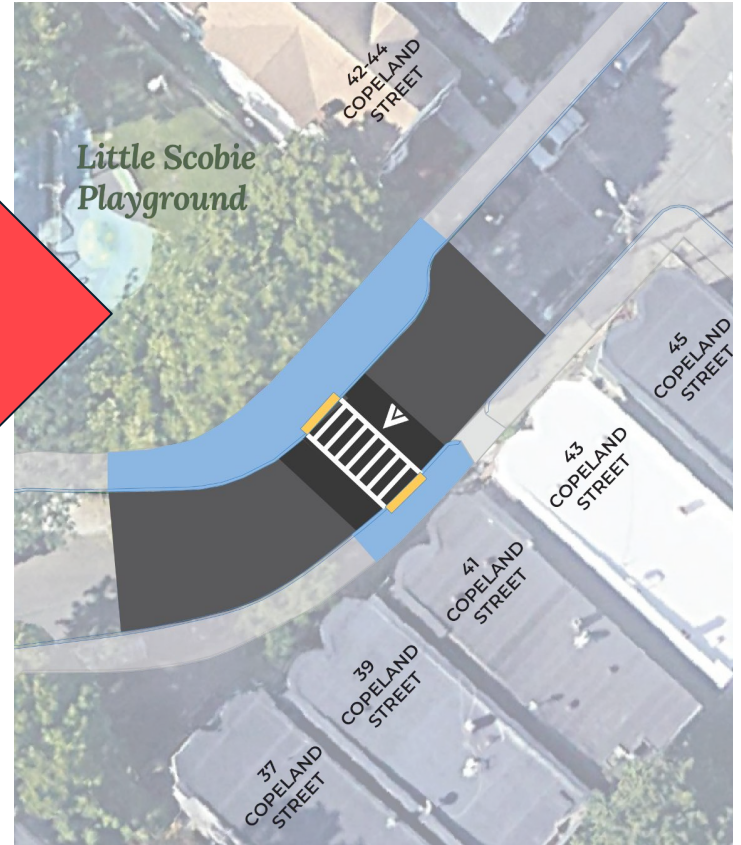




# Concept

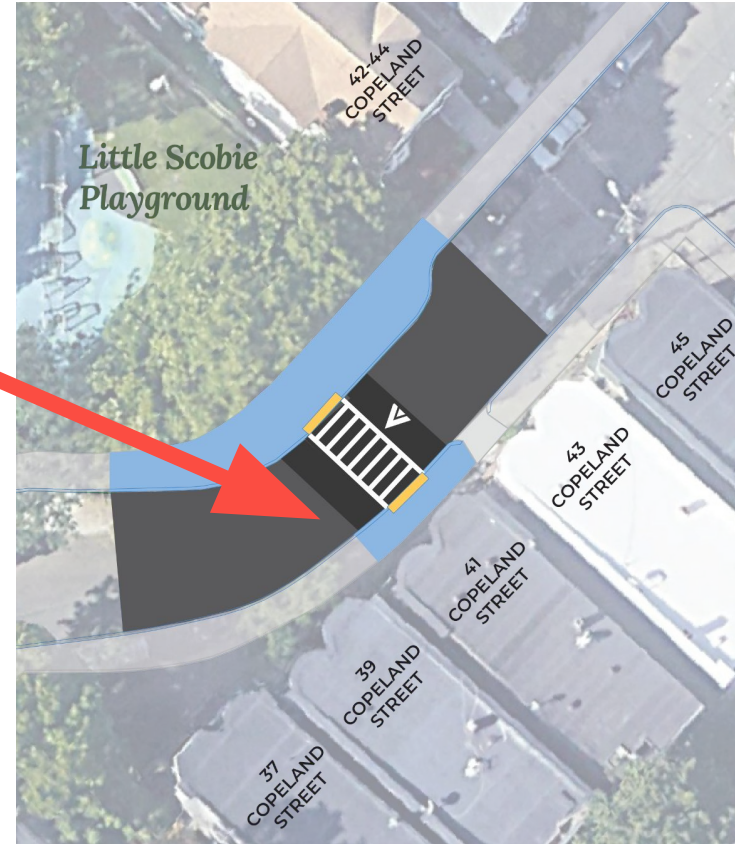


# Initial design



# What changed?

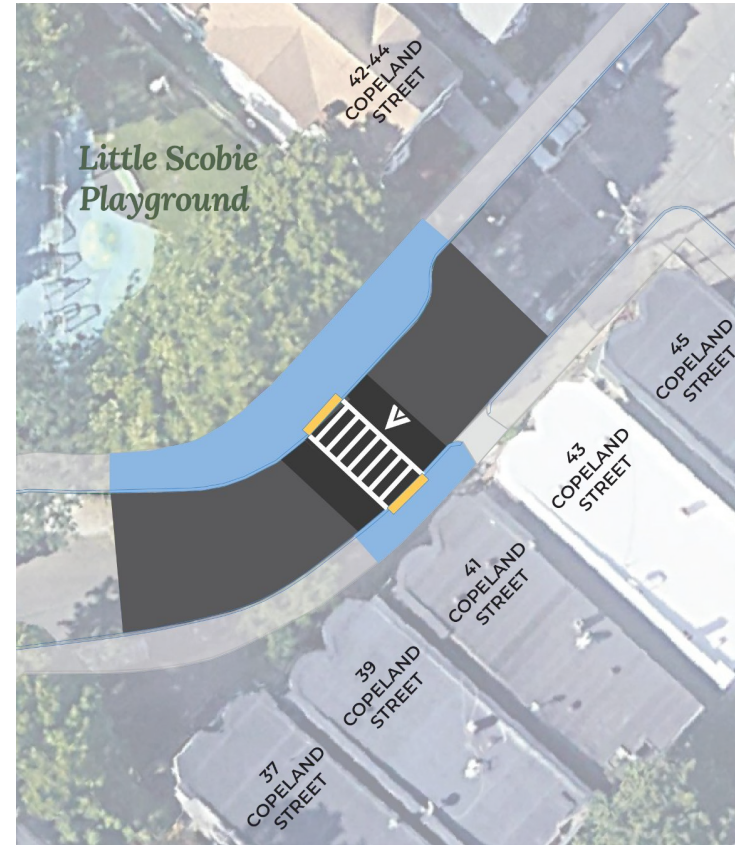
- ▶ Not possible to add second curb extension on eastern side, in front of residences



# About the raised crosswalk design

To keep this crosswalk safe for everyone, we need to restrict some parking. This will help drivers and pedestrians see each other.

- ▶ You will not be allowed to park on the crosswalk.
- ▶ You will not be able to park on either side of Copeland before the crosswalk.



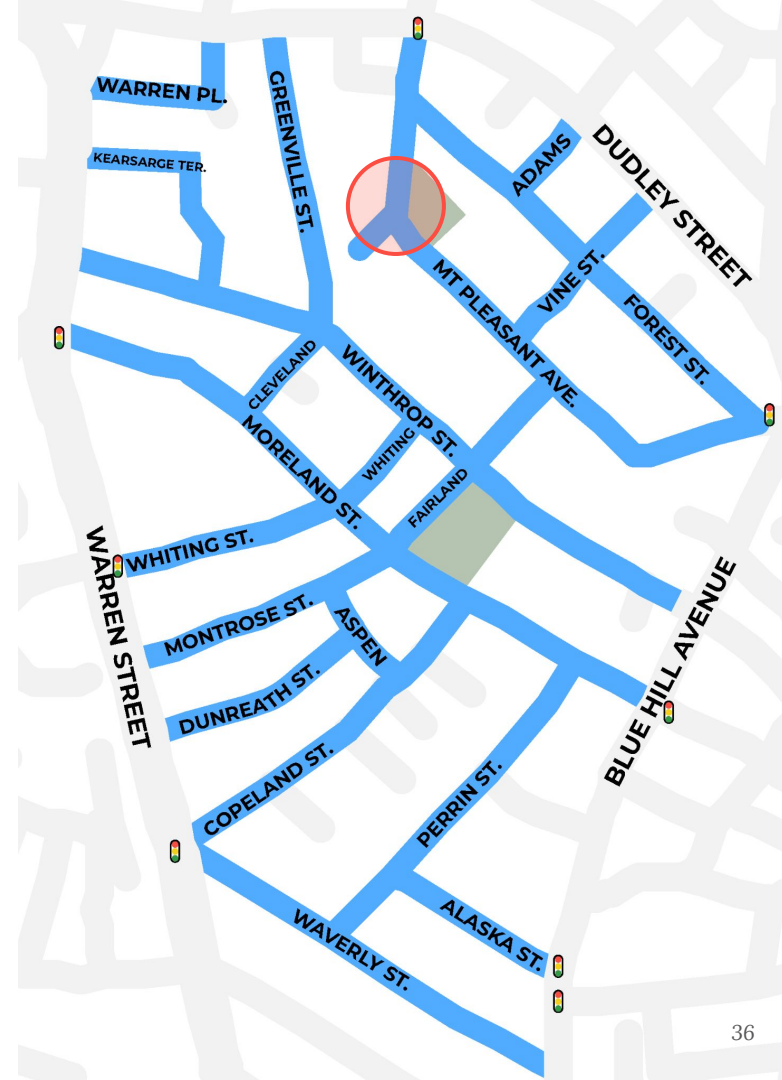


A blue-tinted photograph of a residential street. On the left, several cars are parked along the curb. In the background, there are multi-story houses with gabled roofs and dormer windows. A sidewalk runs along the right side of the street, bordered by a fence and some vegetation. The overall scene is bright and clear, with a consistent blue color cast.

# FOCUS AREA 3: MT. PLEASANT AVENUE

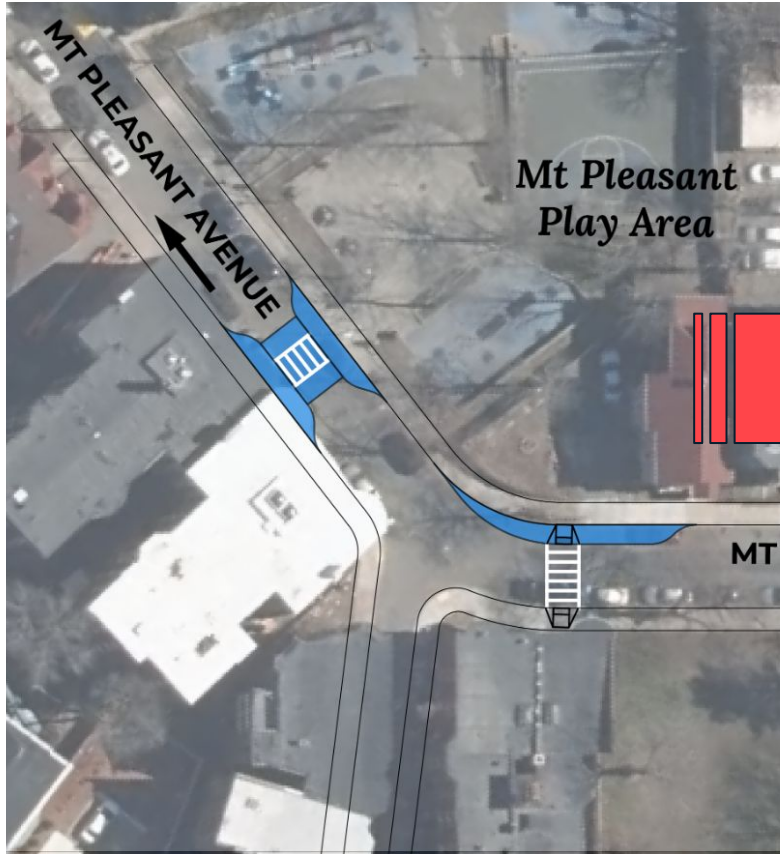
# We're focusing here because:

- ▶ People driving cannot see people crossing to the park
- ▶ There's no crosswalk to the park
- ▶ The bend in the street causes visibility issues

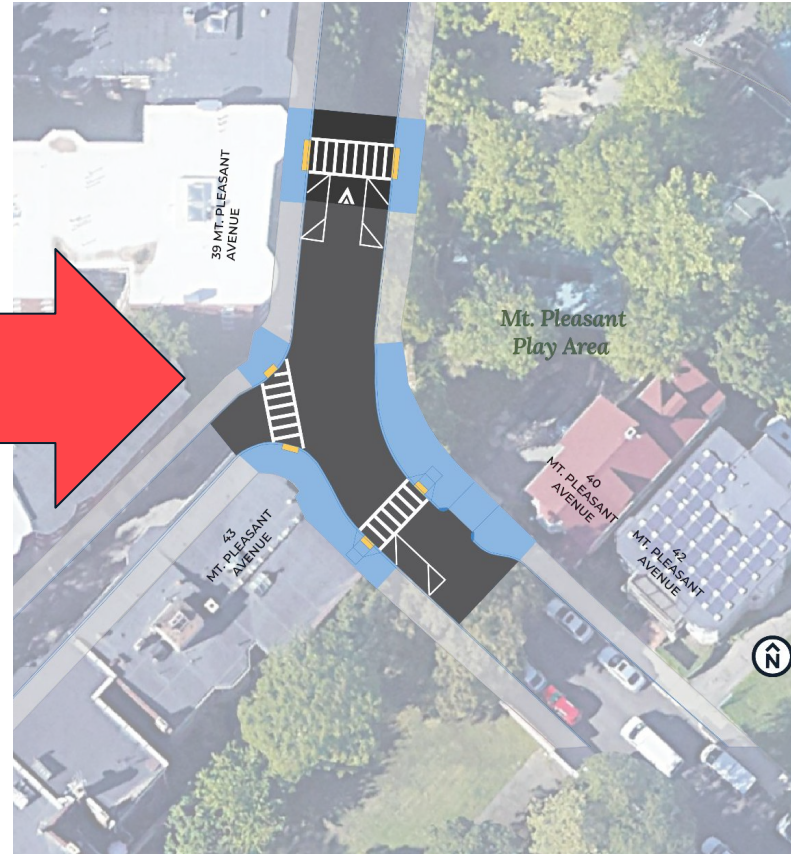




# Concept

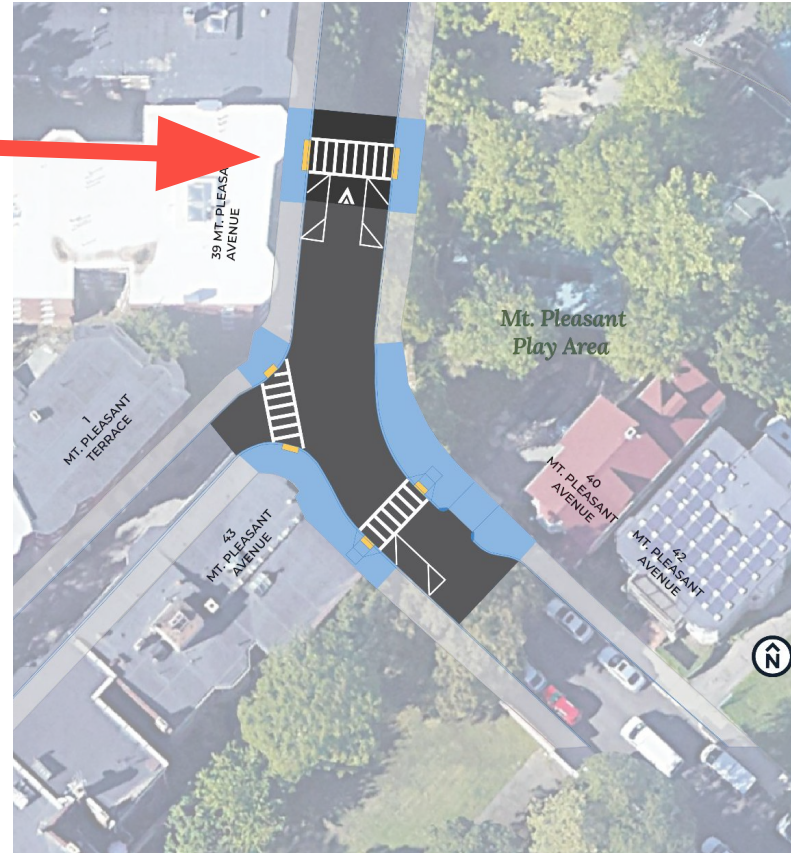


# Initial design



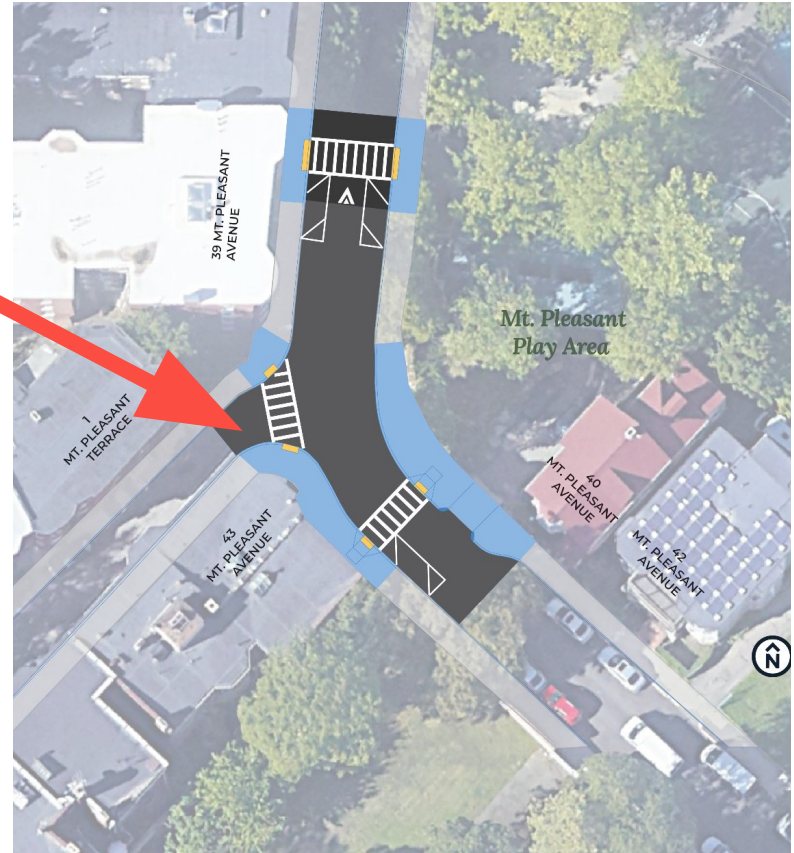
# What changed?

- ▶ Not possible to add curb extensions for the crosswalk



# What changed?

- ▶ We will rebuild the curb ramps across Mt. Pleasant Terrace

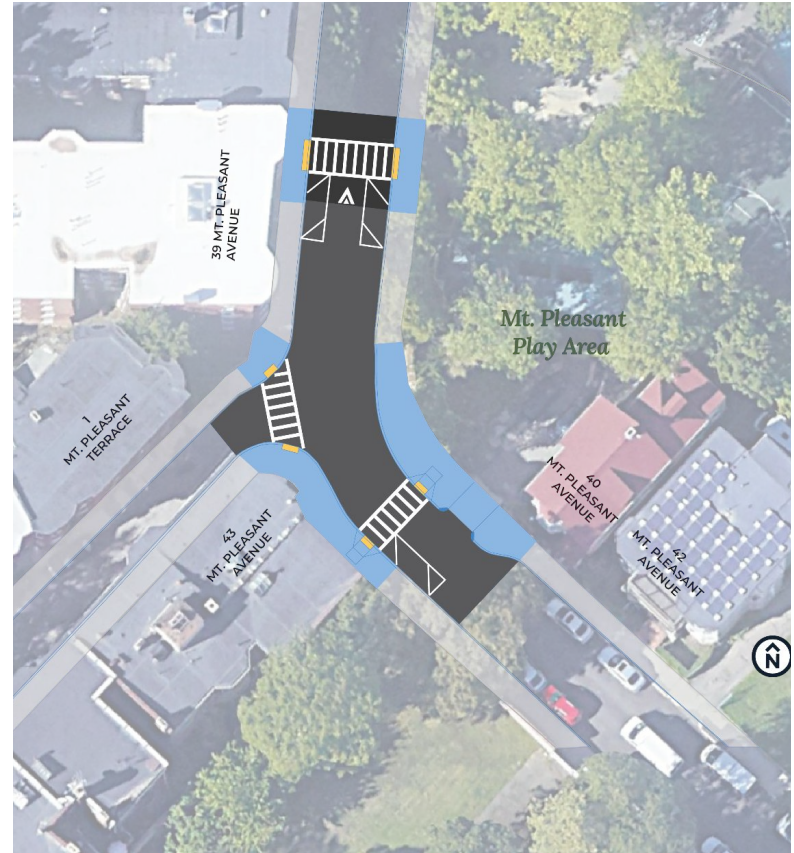




# About these crosswalk changes

To keep these crosswalk safe for everyone, we need to restrict some parking. This will help drivers and pedestrians see each other.

- ▶ You will not be allowed to park on the crosswalks.
- ▶ You will not be able to park on either side of Mt. Pleasant Avenue before the crosswalk.

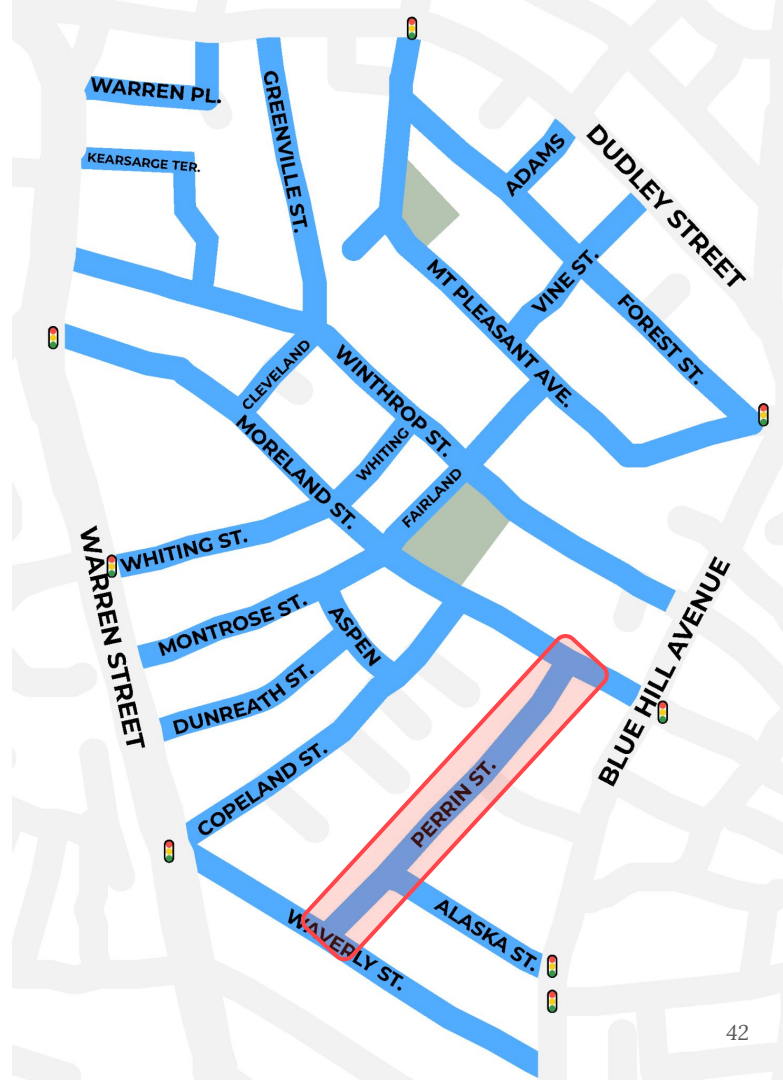


A blue-tinted photograph of a residential street. On the left, several cars are parked along the curb. In the background, there are multi-story houses and trees. On the right, there is a sidewalk and a fence with some greenery. The overall scene is a typical suburban street.

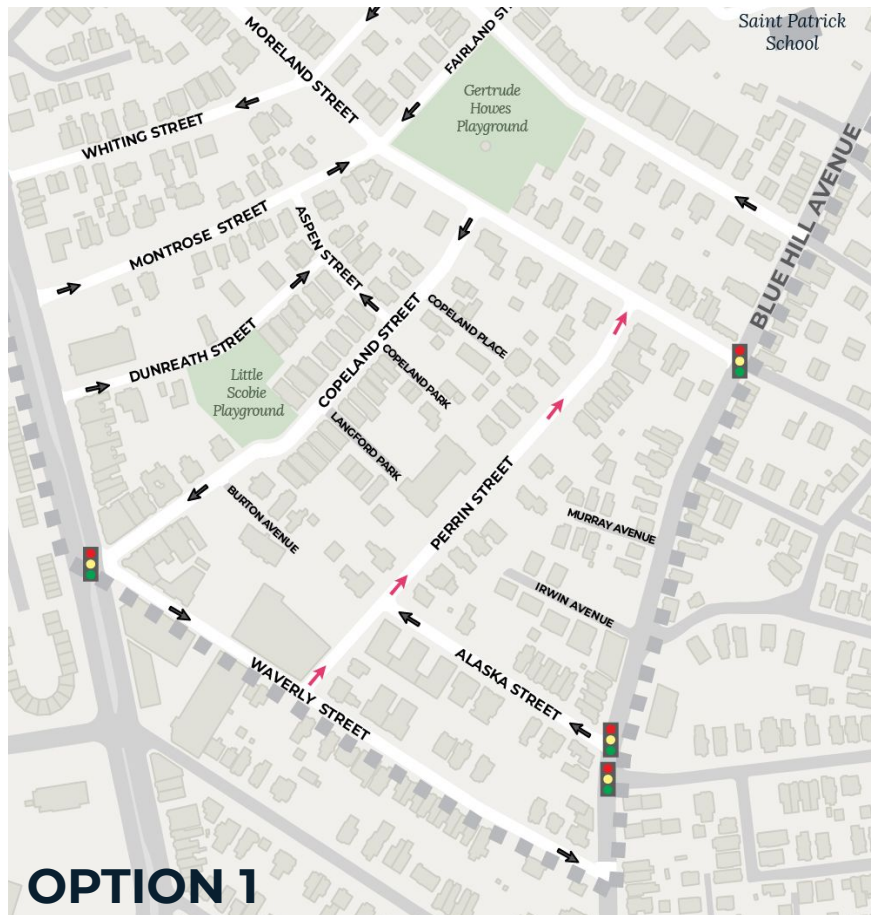
# STREET DIRECTION CHANGE: PERRIN STREET

# Make Perrin a one-way street.

Many people asked us about this idea. Let's talk about how!







**OPTION 1**



**OPTION 2**

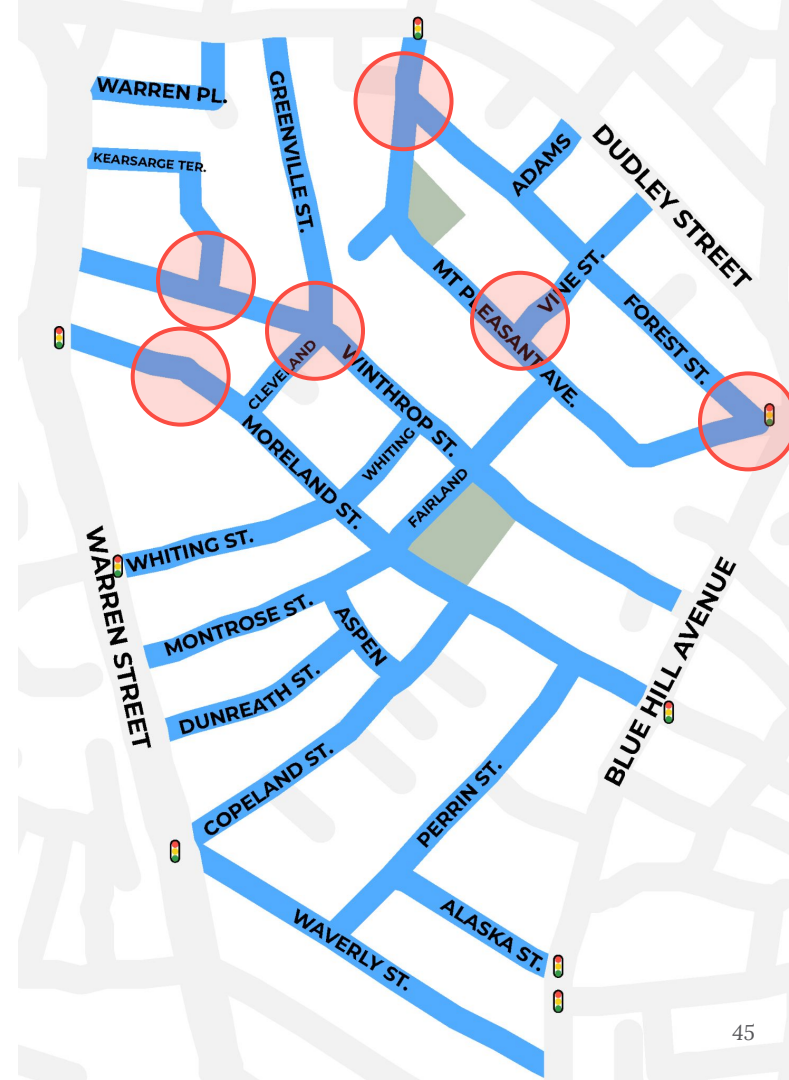


**WHAT'S NEXT?**



# We will hold another meeting to discuss:

- ▶ Requests for new crosswalks
  - Exploring where crosswalks are possible without advanced engineering
- ▶ Reported visibility issues at intersections
  - Reviewing all locations that have been sent to us

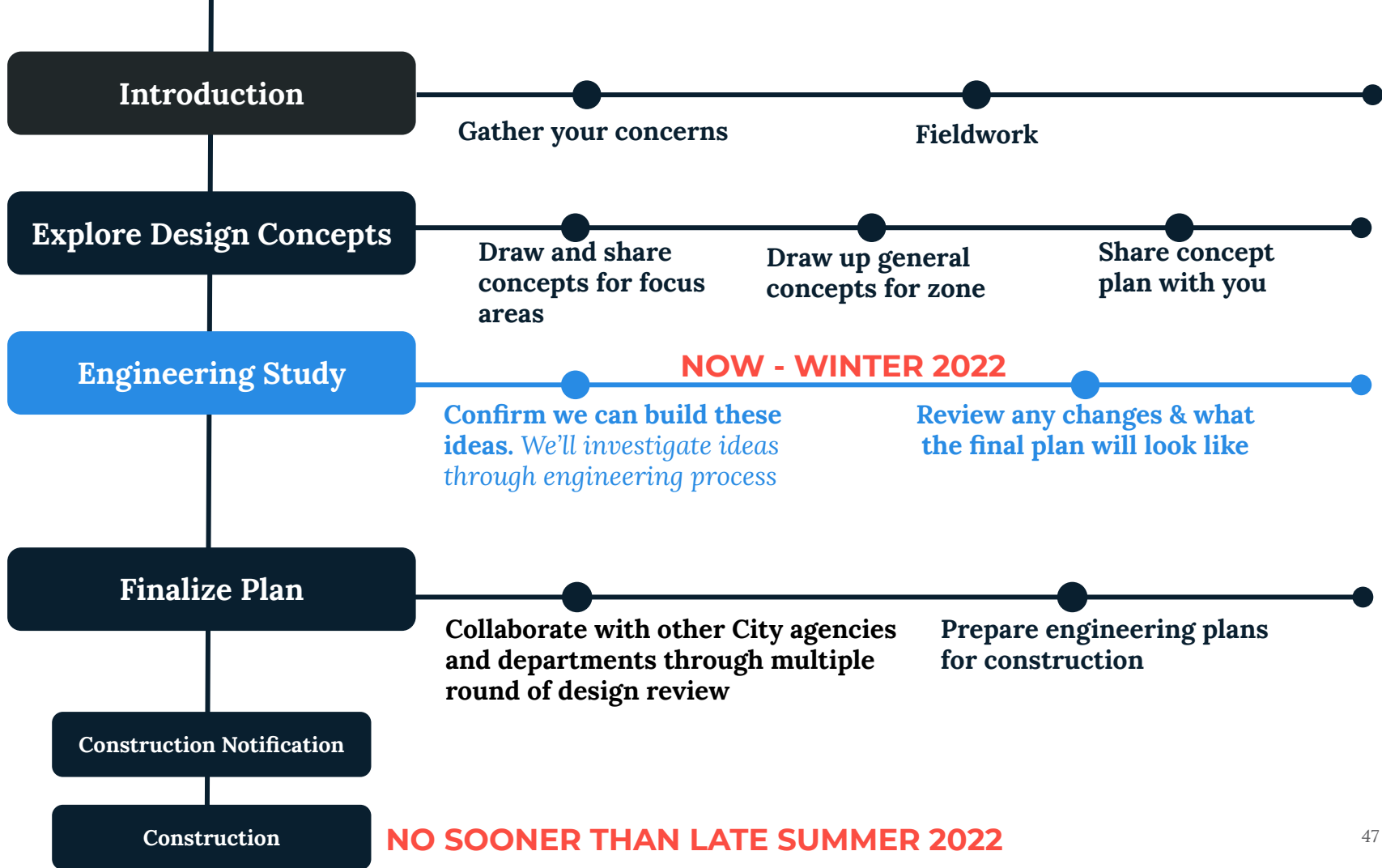


# We need your feedback

---

*These plans can still change!*

- ▶ Attend our “office hours”
  - *bit.ly/Slow-Streets-15*
- ▶ Get in touch by mail, email, or phone
- ▶ Share information with your neighbors



# Stay in touch

---

- ▶ **[boston.gov/slow-streets/moreland-mtpleasant](https://boston.gov/slow-streets/moreland-mtpleasant)**
  - Sign up for email updates
  - Check the latest information
- ▶ **[bit.ly/Slow-Streets-15](https://bit.ly/Slow-Streets-15)**
  - Make an appointment to chat with us
- ▶ **[slow.streets@boston.gov](mailto:slow.streets@boston.gov)**
- ▶ **Boston Transportation Department**  
ATTN: Slow Streets  
1 City Hall Square, Room 721  
Boston MA 02201