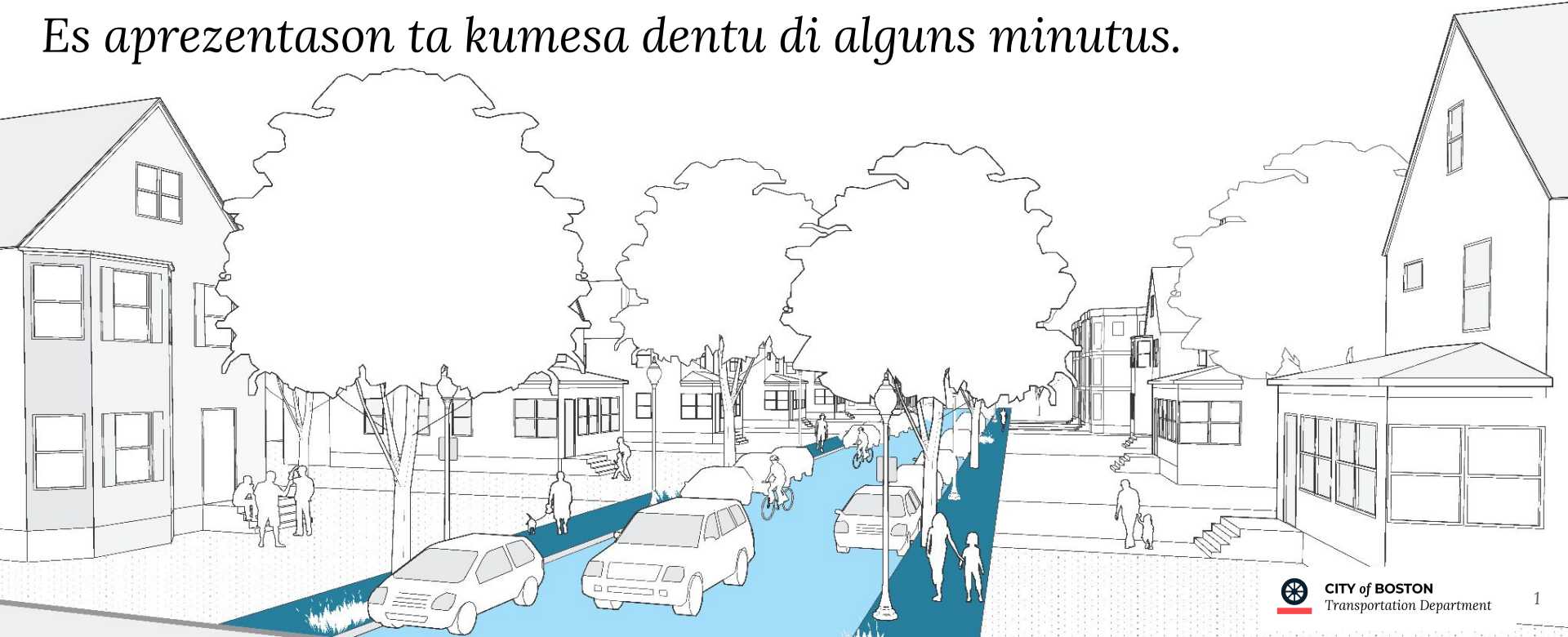


BENVINDU A ES ENKONTRU VIRTUAL DI “HANCOCK STREET TRIANGLE” (TRIANGULU DI RUA HANCOCK)

Es aprezentason ta kumesa dentu di alguns minutos.



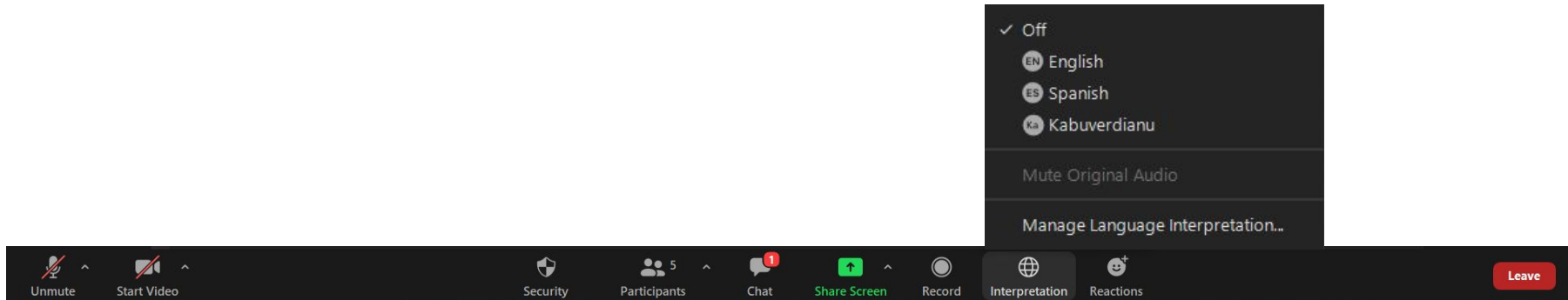
Benvindu!

English: For interpretation in Portuguese.

1. Go to control bar at the bottom of the screen and Click "Interpretation"
2. Next, click on the language that you would like to hear.
3. You now have access to the Portuguese meeting.

Para interpretação int Português.

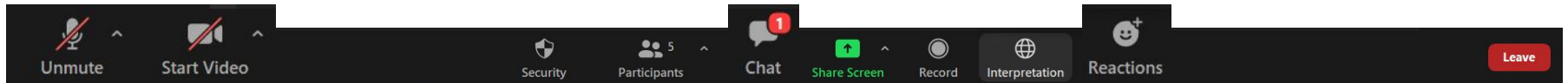
1. *Vá para a barra de controle horizontal na parte inferior da tela. Clique em "Interpretation".*
2. *Em seguida, clique no idioma que deseja ouvir.*
3. *Agora você está acessando esta reunião em Português.*



Benvindu!

Es reunion ta ben ser **gravadu**.

Atualiza bu nomi na Zoom pa inklui bu nomi y pronomi preferidu.

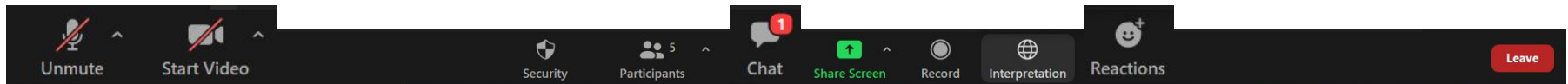


Benvindu!

Nhos mikrofoni sta disligadu pa kumesa. Bu ten ki ativa-l pa fala. Bu sta entra via tilifoni?

Karega na *6 pa ativa mikrofoni.

Bu poi utiliza opsons di resposta não verbal. Labanta mon ô dexe un mensajen na chat si bu tiver un pergunta. Si bu txoma pa reunion, uza *9 pa labanta mon.



Neighborhood Slow Streets (Ruas Lentu di Bairu)

HANCOCK STREET TRIANGLE

*27 di Outubru, 2021
via Zoom*

Olá!



Hannah Fong (she/her)

Planner, Active Transportation
Boston Transportation Department
hannah.fong@boston.gov



Dan Merrow (he/him)

Sr. Engineer, Active Transportation
Boston Transportation Department
daniel.merrow@boston.gov



Stefanie Seskin (she/her)

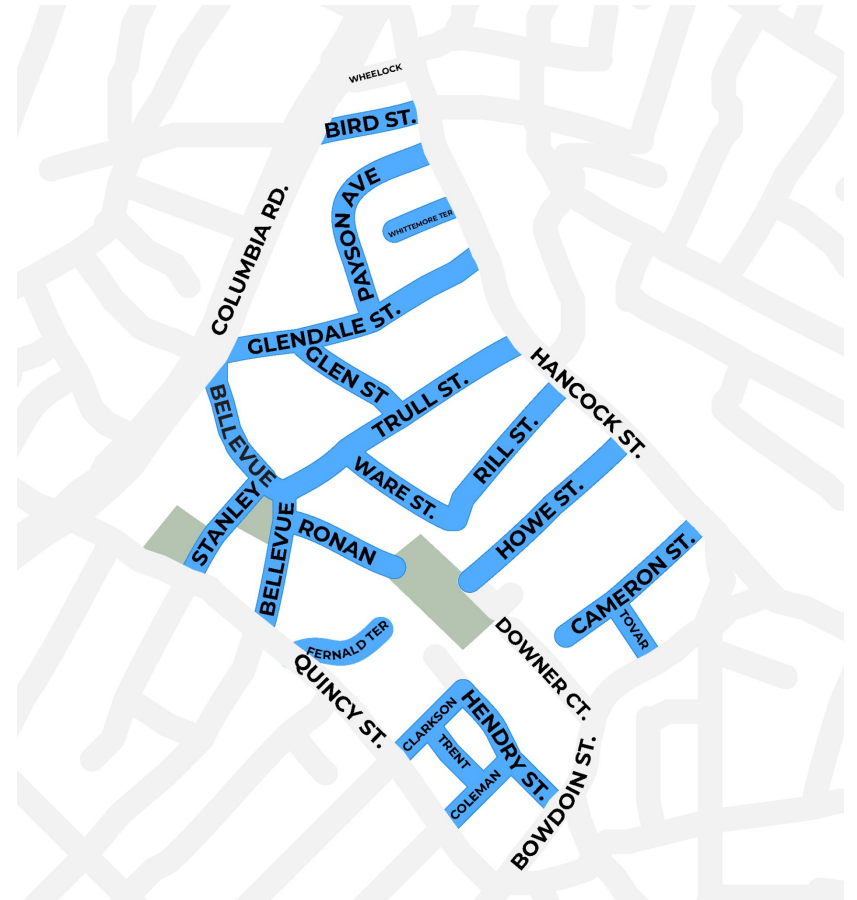
Active Transportation Director
Boston Transportation Department
stefanie.seskin@boston.gov

Hancock Street Triangle zone



Objetivu di Reunion di es Noti

- ▶ Reviza kuze ki dja nu fazi ate agora
- ▶ Partilia expetativas au longu di zona
- ▶ Fala sobri ridezenhu pa Bellevue na Rua Trull
- ▶ Diskuti mudansas di direson di ruas
- ▶ Atualizason sobri prosimus pasu



Kuze ki é Ruas Lentu di Bairu?

- ▶ Foka na seguransa na un redi konektadu di ruas pikenus di **bairu**
- ▶ Konstrui mudansas di design pa midjora seguransa y reduzi velocidadi
- ▶ Limites di velocidadi definidu di **20 MPH (milha)**



Modi ki nu ta Aborda Design

Envolvi
moradores na
priorizason di
areas di foku

Prioriza *pesoas*
a pé ô na
bisikleta, adultus
mas velhus,
juventudi, y
pesoas ku
defisiensias

Reduzi
asidentis ki
podu leba a
lezãu gravi ô a
fatalidadi

Modi ki nu obi di nhos:

PA KOREIU

- ▶ Karta ô inkéritus di peskiza enviadu na final di Agostu di 2020

INKÉRITU INTERATIVU

- ▶ Abertu ate dizenbru, publikadu na Ingles, spanhol, y kriolu kabu-verdianu

WORKSHOP AU AR LIVRE

- ▶ 26 di Setenbru, 2020 na Parki Stanley-Bellevue

REUNION VIRTUAL

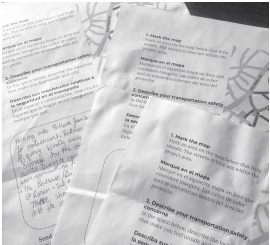
- ▶ 27 di Abril, 2021 via Zoom

FEEDBACK ADISIONAL

- ▶ Formulariu di feedback via internet, xamadas pa telefoni ku nhos, y e-mails ku nhos

Modi ki nu txiga li:

NHOS KARTAS, KOMENTARIUS



NOS OBSERVASON



KONSEITU DI DESIGN

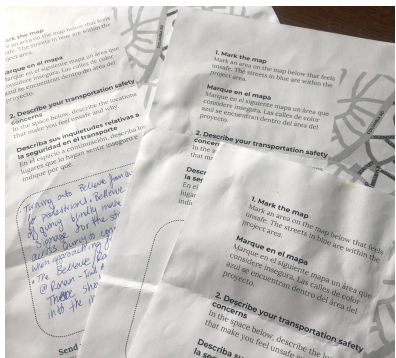


*Nu partilia es
konseitus na Abril di
2021 y nu aseita
komentarius duranti
es verãu.*

KONSEITU DI DESIGN



NHOS KARTAS, KOMENTARIUS



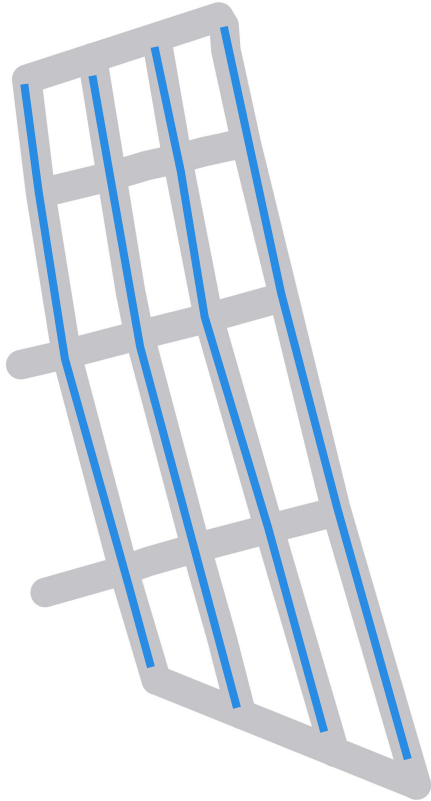
REVIZÃO DI ENJENHARIA



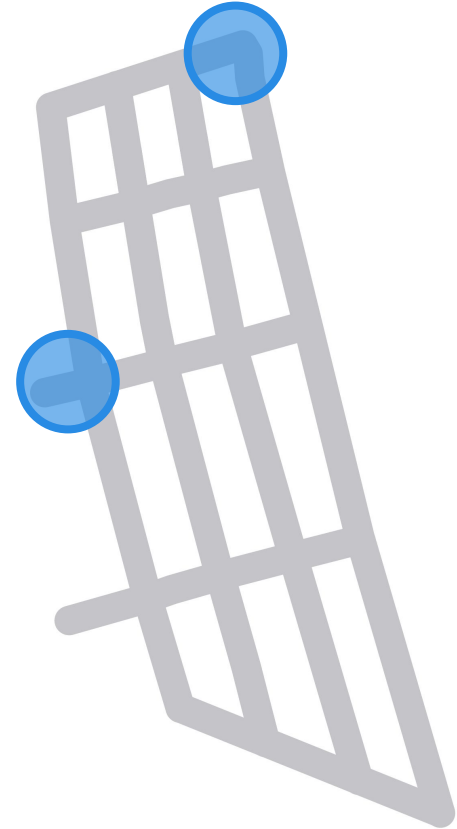
DESIGN INISIAL



PREKUPASONS JERA



AREAS DI FOKU



TAU LONGU DI ZONA

A blue-tinted photograph of a residential street. On the left, there is a row of multi-story houses with white siding and balconies. In the foreground, several cars are parked along the street. In the background, more houses are visible on a hillside under a cloudy sky. The text "TAU LONGU DI ZONA" is overlaid in white, bold, sans-serif font across the center of the image.

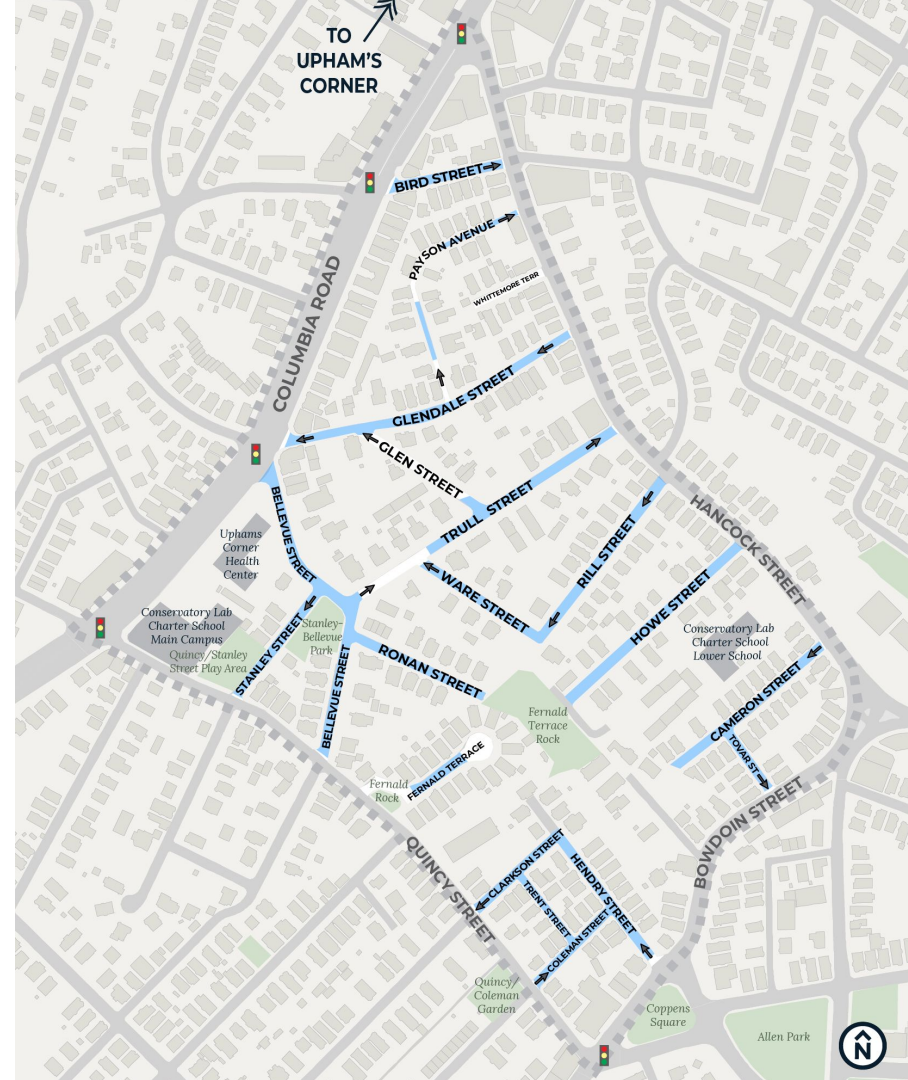
Sinais y markasons di “Gateway” (porta di entrada)

- ▶ Pa dexta pesosas sabi ma es sta na un Zona Lentu
- ▶ Sinais di 20 MPH (milha)
- ▶ Markas suplementar di “20 MPH” na txon



Akresenta lonba na varius rua

- ▶ A kada 150' pa 250'
- ▶ Menus frenti di vias di asesunâu
- ▶ Sen inpaktu na stasionamentu



Lonba ka e kebra mola



SIN! Koni Gradual pa sima y pa baxu, di 12 (3,65m) pa 14 pés (4,27m) di kunprimentu



NAU! Kebra mola inesperadu, duru 3 (0,91m) a 4 pés (1,21m) di kunprimentu

Konsiderasons pa lonba

1. Subidas
2. Ruas kurvadu
3. Nesesidadis di emerjensia

Nu ka ta podi poi lonbas na partis di subidas na ruas.



Konsiderasons pa lonba

1. Subidas
2. Ruas kurvadu
3. Nesesidadis di emerjensia



Nu ka ta podi poi lonbas na ô pertu di kurvas.

Kondutoris ka ta ten sufisienti vizibilidadi di es à distansia.

Konsiderasons pa lonba

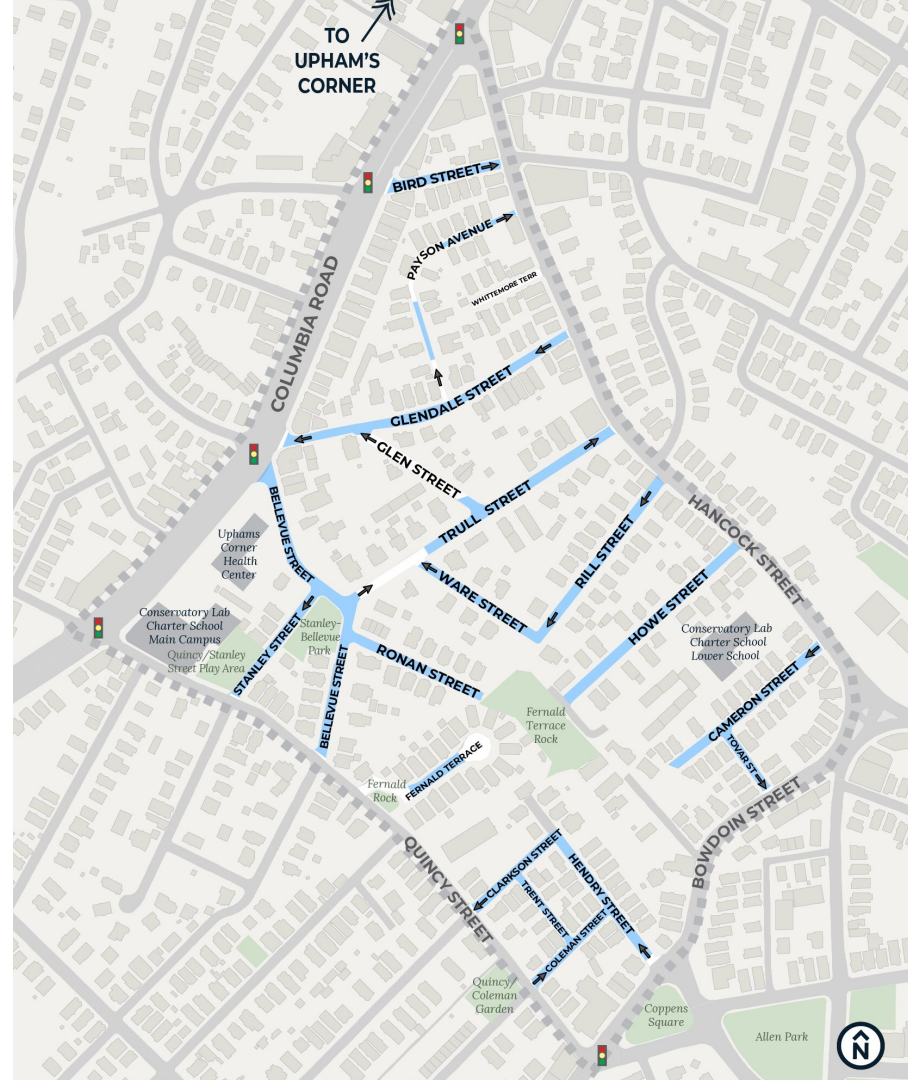
1. Subidas
2. Ruas kurvadu
- 3. Nesesidadis di emerjensia**



Nu ta sigi instruson di espesialistas di emerjensia pa nu planeja kantu lonbas nu podi konstrui. Nu ta ekilibra nesesidadis di dia-a-dia ku minimizason di tenpu di resposta.

Nu sta konsidera lonbas na es ruas

- ▶ **Areas azul** ta indika potensiais segmentu di lonba.
- ▶ Segmentus branku ka e elejivel pa Lonbas.
- ▶ Dipos di prosesu di design, nu podi ka poi lonbas na tudu ruas

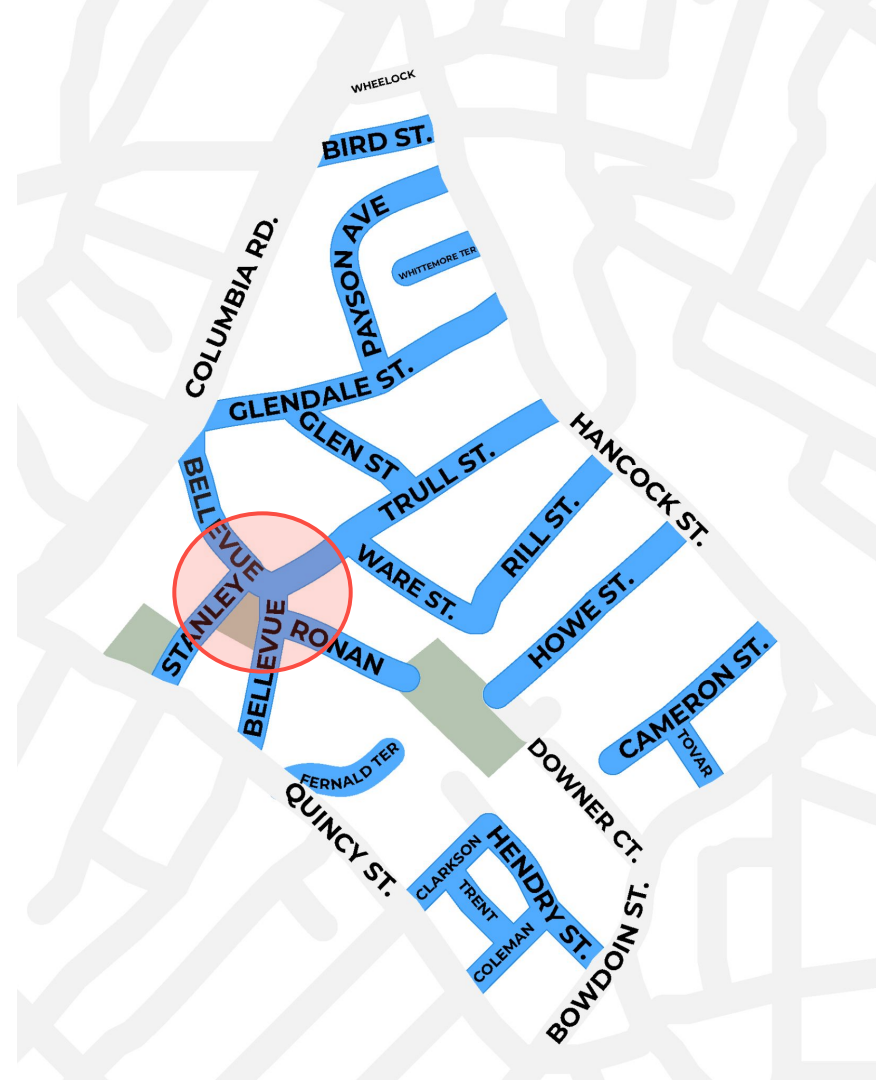


An aerial photograph of a residential neighborhood. The image is overlaid with a semi-transparent blue rectangle. Inside this rectangle, the text "AREA DI FOKU 1: BELLEVUE Y TRULL" is written in large, white, bold, sans-serif capital letters. The background shows various houses, streets with yellow double lines, and a grassy area with a black metal fence and a stone archway in the foreground. The trees are mostly bare, suggesting a cooler season.

AREA DI FOKU 1: BELLEVUE Y TRULL

Nu sta foka li purkê bu flaba nos ma:

- ▶ Ka ta da seguransa na atravessa es rua
- ▶ Pessoas ta kurva mutu rapidu
- ▶ Pessoas ta stasiona na areas definidu komu “proibidu stasiona”
- ▶ E difisil odja otus pesoa ta atravessa es rua na interseson
- ▶ Bellevue na sul di Trull ta da sensason di ser pertadu enkuantu rua di 2 via



EXTENSON DI PASEIUS

Extenson di paseius ta kria pasajens mas kurtu. Paseiu ta extendi pa dentu di rua y ta kria mas spasu pa konstrui un ranpa di kurva asesivel.

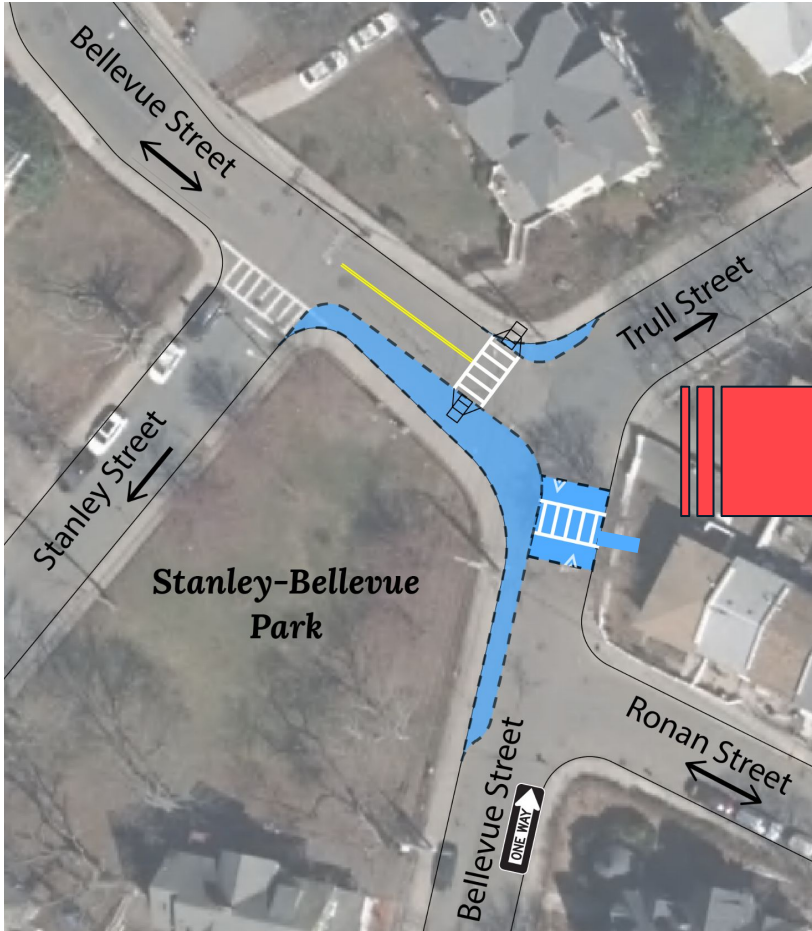


PASADERAS KU KEBRA MOLA

Kebra mola ku pasaderas ten mesmu altura ki paseius. Es ta obriga condutores a reduzi velocidadi y torna mas fasil pa pessoas atravessa ruas.



Konseitu



Design inisial

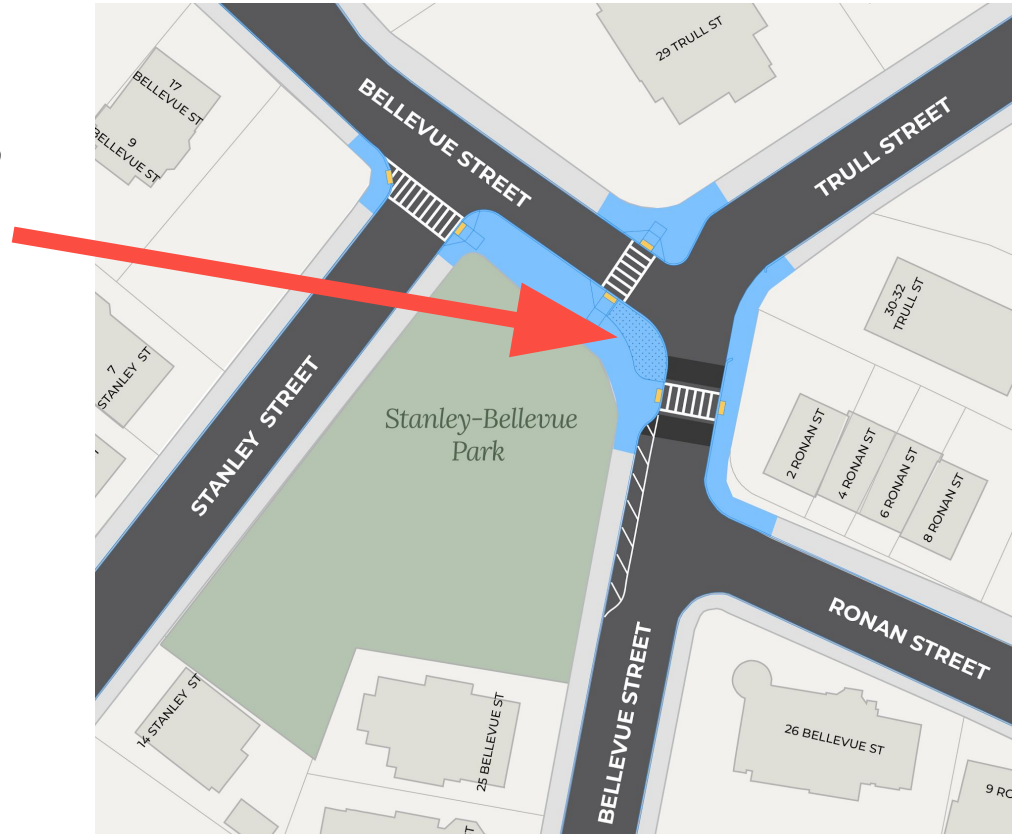


Kuze ki muda?

Pa ki seja kunpridu ezijensias di asesibilidadi, ka ta ser permitidu anda na un pekenu porson di kel extenson di paseiu.



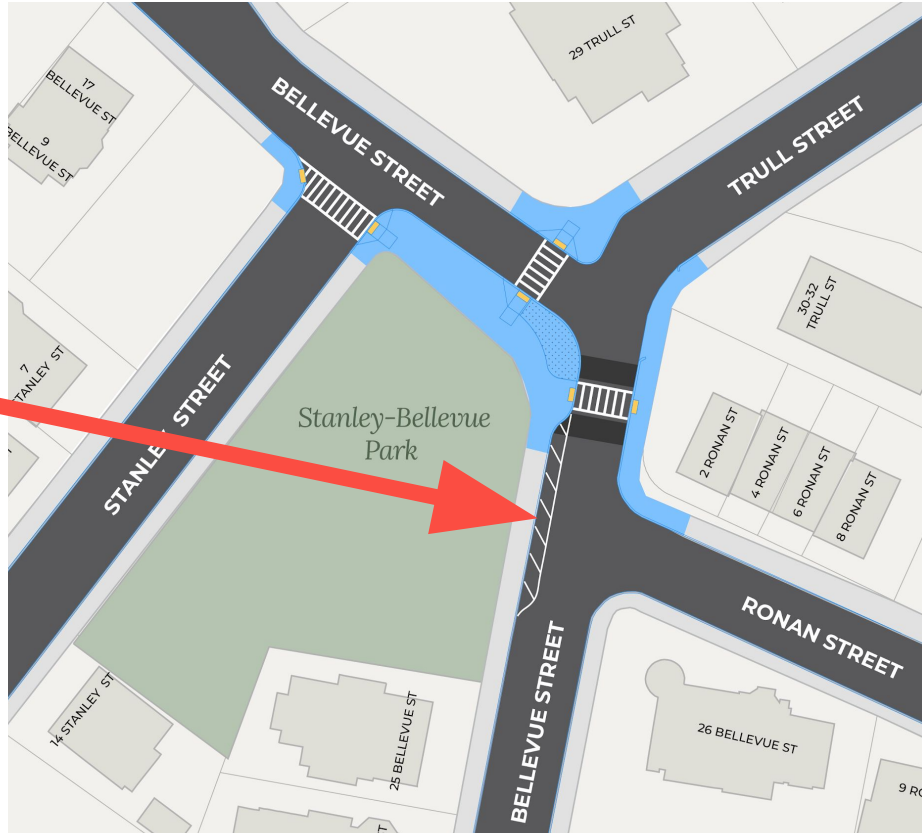
Ezemplu di Rua Harvard na Dorchester



Kuze ki muda?

Nu ka podi konstrui un extension di paseiu na Rua Bellevue, a sul di kel novu kebra mola ku pasadera.

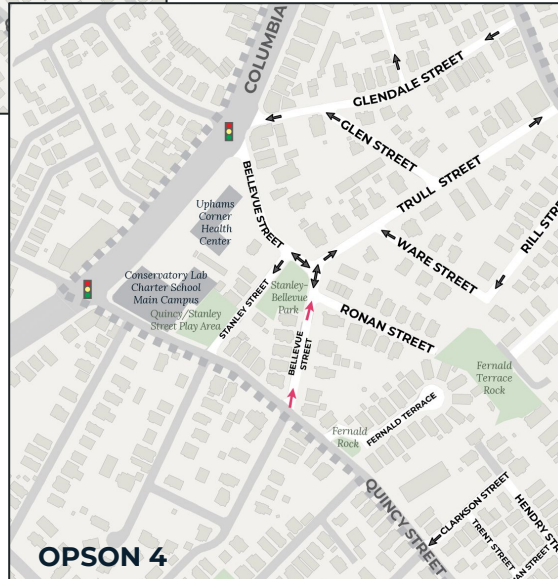
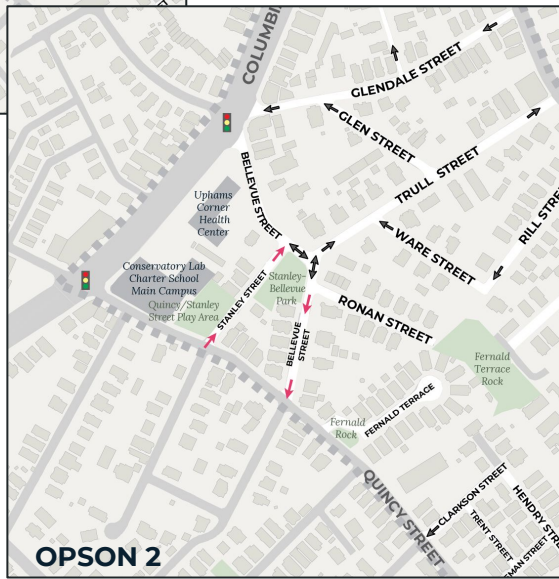
- ▶ Lokalizason di servisu subteraniu ta inpidinu di koloka extensions di paseiu.
- ▶ En vez disu nu ta utiliiza markas na pavimentu y divisor di fluxu flexível.



Transforma Stanley and Bellevue num par di ruas di un sentidu.

Txeu pesoas ta apoia es ideia. Nu bem fala sobri komu!

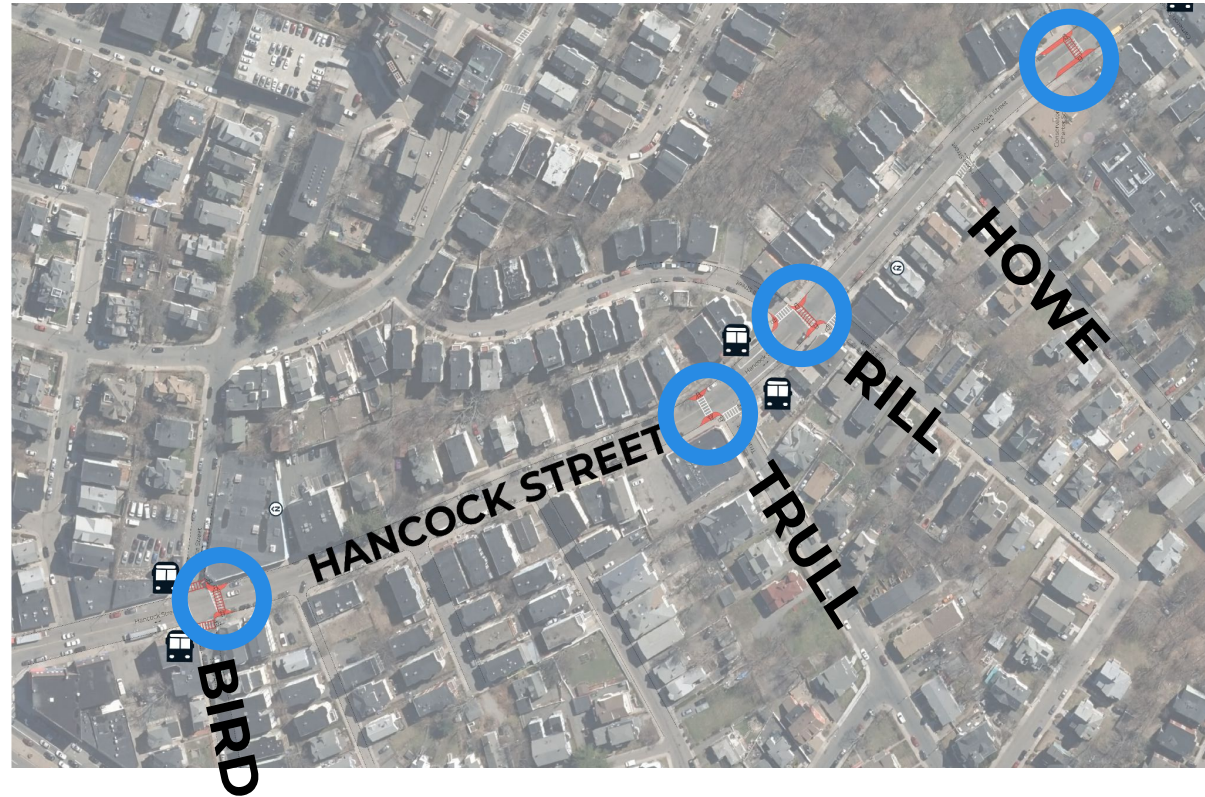




KUAL KE PROSIMU PASU?

Pasaderas di Hancock Street

Nu sta planeja partilia design inisial na nos prosimu reunion.





Manti en kontatu

- ▶ boston.gov/slow-streets/hancock
 - Rejista pa resebi aktualizason via email
 - Konsulta informason resenti
- ▶ bit.ly/Slow-Streets-15
 - Marka un reunion pa fala ku nos
- ▶ slow.streets@boston.gov
- ▶ 617-635-1347