



WETLANDS REGULATIONS PHASE III COMMUNITY ADVISORY BOARD MEETING #2

September 29, 2021

AGENDA

- **Introductions**
- **Meeting Goals and Community Norms**
- **Community Outreach**
- **Environmental Justice 101**
- **Next Steps**



COMMUNITY ADVISORY BOARD MEETING #2

INTRODUCTIONS

A scenic view of a pond with a wooden bridge, surrounded by tall reeds and trees under a blue sky. The text "INTRODUCTIONS" is overlaid in large white letters on the left side of the image.

CITY STAFF



**Reverend Mariama
White-Hammond**

*Chief of Environment,
Energy, & Open Space*



Alison Brizius

*Commissioner,
Environment
Department*



Nick Moreno

*Executive Director,
Boston Conservation
Commission*



Kate Oetheimer

*Conservation
Assistant*



**Catherine (Cat)
McCandless**

*Climate Change &
Environmental Planning
Project Manager*

CONSULTING TEAM

LEGAL EXPERTISE



**GIS MAPPING &
TECHNICAL EXPERTISE**



**OUTREACH &
ENGAGEMENT**



LET'S GET TO KNOW EACH OTHER (AGAIN)!

- **Name**
- **Neighborhood**
- **Occupation and community involvement**
- **What is your favorite outdoor activity?**

COMMUNITY ADVISORY BOARD MEETING #2

MEETING GOALS AND COMMUNITY NORMS

A scenic view of a pond with tall reeds in the foreground and a wooden bridge in the middle ground, under a clear blue sky. The text is overlaid on the top half of the image.

CAB MEETING #2 GOALS

1. Review draft outreach materials;
2. Discuss outreach expectations for CAB members;
3. Discuss environmental justice policies and regulations in Massachusetts and the City of Boston; and
4. Discuss ways in which environmental justice considerations could be incorporated into the regulations and guidelines.



COMMUNITY NORMS

1. **Assume good intent of your fellow CAB members.** If a harmful comment is made, this is space where you can respectfully let that person know so we can all learn and move forward together.
2. **Your time is valuable.** We will always start and end on time.
3. **Stay engaged** throughout the meeting. In a virtual environment, this means keeping your video on, practicing active listening, and not multitasking.
4. **Step up** (if you're shy) **and step back** (if you're speaking a lot).
5. **If you don't understand something, ask for clarification.** We are all learning together and will benefit from your questions.
6. **Foster transparency while respecting privacy.** Any information shared outside of the space will be clearly stated and agreed upon by all members of the CAB. Any information shared within this space should always be done with that individual's consent.

COMMUNITY ADVISORY BOARD MEETING #2

COMMUNITY OUTREACH

A scenic view of a pond with a wooden bridge, surrounded by tall grasses and trees under a blue sky. The text 'COMMUNITY OUTREACH' is overlaid in large white letters.

OVERVIEW OF EASYRETRO RESPONSES FROM CAB MEETING #2

What does your community care about in the context of wetlands?

Preservation of existing wetlands

Creation of new wetlands

Accessibility of and access to wetlands

Public education about the value of wetlands

As a representative of your community, what kind of outreach works?

Flyers and paper materials

Social media (Facebook, Twitter, Instagram)

Community meetings

Multi-lingual engagement

Door-knocking

Outreach via neighborhood associations and community groups

What resources do you need from the City to be equipped to conduct engagement in your community?

Paper and digital outreach materials

Neighborhood demographics (languages)

Translated materials

List of neighborhood associations and community groups by neighborhood

Fact sheet about wetlands

Maps of areas covered by the Ordinance

OUTREACH TOOLKIT – EXAMPLE FLYER



Does this flyer capture your attention?

Do you know what the topic is?

Do you know what the call to action is?

Would you be compelled to look into the survey?

OUTREACH TOOLKIT – EXAMPLE SOCIAL MEDIA POSTS

Informational Post Example:

@BostonEnviro and the #bostonconcom are developing regulations under the #BostonWetlandsProtectionOrdinance that address #climateresilience and #environmentaljustice and work towards @CityofBoston's goal of protecting the City from the impacts of climate change. Learn more here: boston.gov/boston-conservation-commission

Call to Action Example:

@BostonEnviro and the #bostonconcom are developing regulations under the #BostonWetlandsProtectionOrdinance that address #climateresilience and #environmentaljustice and work towards @CityofBoston's goal of protecting the City from the impacts of climate change. Help inform the regulations by filling out this survey! [insert survey link]



OUTREACH TOOLKIT – DRAFT SURVEY

CITY of BOSTON

WETLANDS PROTECTION ORDINANCE PHASE III REGULATIONS WETLANDS SURVEY

SECTION 1: Boston Conservation Commission

1. Have you attended a Boston Conservation Commission meeting before?
 - a. Yes
 - b. No
2. If you answered "No" to the question above, why not? (select all that apply).
 - a. I do not know when the meetings are / I do not know how to access the meetings.
 - b. I am unavailable in the evenings.
 - c. I do not have the technology necessary to access virtual meetings.
 - d. I was unable to attend in-person hearings due to transportation/mobility constraints.
 - e. I need language interpretation services.
 - f. I need help with childcare.
 - g. There has not been a project I have been interested in.
 - h. I do not know what the Boston Conservation Commission does.
 - i. Other (please explain)
3. What do you think the Boston Conservation Commission's responsibilities are?

SECTION 2: Wetlands in Boston

4. Where in the City do you live? (select one)
 - a. Allston
 - b. Back Bay
 - c. Bay Village
 - d. Beacon Hill
 - e. Brighton
 - f. Charlestown
 - g. Chinatown-Leather District
 - h. Dorchester
 - i. Downtown
 - j. East Boston
 - k. Fenway-Kenmore
 - l. Hyde Park
 - m. Jamaica Plain
 - n. Mattapan
 - o. Mission Hill
 - p. North End
 - q. Roslindale
 - r. Roxbury
 - s. South Boston
 - t. South End
 - u. West End
 - v. West Roxbury
 - w. I live outside of Boston but I work in Boston.
 - x. I live outside of Boston and I do not work in Boston.
 - y. Other
5. Are there wetlands in your neighborhood that you know of?
 - a. Yes
 - b. No
 - c. I don't know
6. Have you visited any wetlands in Boston?
 - a. Yes
 - b. No

The draft survey has three key sections:

1. Boston Conservation Commission general questions
2. Wetlands in Boston
3. Environmental Justice

OUTREACH TOOLKIT – DRAFT SURVEY

CITY of BOSTON

WETLANDS PROTECTION ORDINANCE PHASE III REGULATIONS WETLANDS SURVEY

SECTION 1: Boston Conservation Commission

1. Have you attended a Boston Conservation Commission meeting before?
 - a. Yes
 - b. No
2. If you answered "No" to the question above, why not? (select all that apply).
 - a. I do not know when the meetings are / I do not know how to access the meetings.
 - b. I am unavailable in the evenings.
 - c. I do not have the technology necessary to access virtual meetings.
 - d. I was unable to attend in-person hearings due to transportation/mobility constraints.
 - e. I need language interpretation services.
 - f. I need help with childcare.
 - g. There has not been a project I have been interested in.
 - h. I do not know what the Boston Conservation Commission does.
 - i. Other (please explain)
3. What do you think the Boston Conservation Commission's responsibilities are?

SECTION 2: Wetlands in Boston

4. Where in the City do you live? (select one)

a. Allston	o. Mission Hill
b. Back Bay	p. North End
c. Bay Village	q. Roslindale
d. Beacon Hill	r. Roxbury
e. Brighton	s. South Boston
f. Charlestown	t. South End
g. Chinatown-Leather District	u. West End
h. Dorchester	v. West Roxbury
i. Downtown	w. I live outside of Boston but I work in Boston.
j. East Boston	x. I live outside of Boston and I do not work in Boston.
k. Fenway-Kenmore	y. Other
l. Hyde Park	
m. Jamaica Plain	
n. Mattapan	
5. Are there wetlands in your neighborhood that you know of?
 - a. Yes
 - b. No
 - c. I don't know
6. Have you visited any wetlands in Boston?
 - a. Yes
 - b. No

The draft survey has three key sections:

1. Boston Conservation Commission
2. Wetlands in Boston
3. Environmental Justice


Do you think we should collect demographic data through this survey?

What would you add for multiple choice options for the following question?


How could the Boston Conservation Commission promote environmental justice when reviewing proposed projects in or near wetlands? (select all that apply)

- To be discussed!

CITY-LED OUTREACH AND NEXT STEPS FOR THE CAB



CITY of **BOSTON**

TRANSLATE 

COVID-19 INFORMATION

For the latest updates, please visit our coronavirus (COVID-19) website:

[COVID-19 INFORMATION](#)

DEVELOPING WETLANDS REGULATIONS

The Wetlands Protection Ordinance gives the City greater authority to protect its wetlands. Our wetlands are crucial to controlling flooding and protecting Boston's neighborhoods and green spaces. Developing regulations is the first step that will help Boston preserve its natural areas for years to come.

NEWSLETTER SIGNUP

Sign up to receive Boston Conservation Commission updates:

YOUR EMAIL ADDRESS	ZIP CODE
<input type="text" value="Email address"/>	<input type="text" value="Zip Code"/>

The City staff will conduct outreach via the City's website, Environment Department newsletter and ConCom newsletter, City and community partners, and more.

Once the outreach materials are finalized, we would like for the CAB members to help us with:

- **Posting flyers at community centers, libraries, BCYFs, etc.;**
- **Spreading the word via social media; and**
- **Reaching out to neighborhood associations and other community groups to ask for survey responses and feedback.**

COMMUNITY ADVISORY BOARD MEETING #2

ENVIRONMENTAL JUSTICE 101



RESILIENT BOSTON RECAP



RESILIENT BOSTON

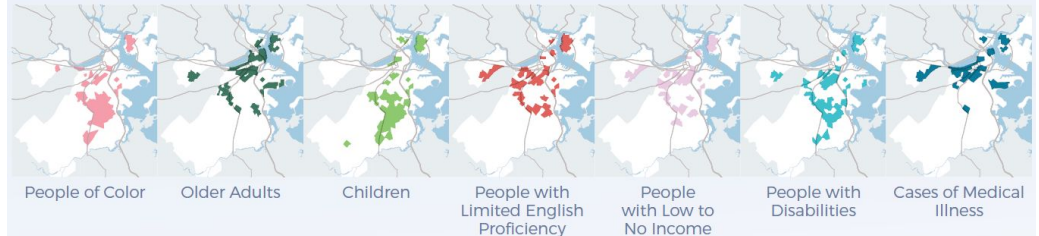
AN EQUITABLE AND CONNECTED CITY



Would anyone like to share something you learned or that stood out?

VULNERABLE POPULATIONS⁶⁹

When we talk about “vulnerable” populations throughout this document, we want to make sure to not project a general victimhood on these residents. Bostonians are strong and capable, and these populations are no exception. However, it is also important to acknowledge that these residents are subject to inequities not faced by more privileged Bostonians, including historical and systemic discrimination, exclusion, marginalization, exploitation, and underrepresentation. Nothing about someone’s race, national origin, age, etc., makes them inherently vulnerable; we see acknowledging vulnerability as an assessment of the system’s deficiencies, rather than a judgment of Boston residents.



WHAT IS ENVIRONMENTAL JUSTICE?

“the fair treatment of people of all races, cultures, and incomes with respect to the development, adoption, implementation, and enforcement of environmental laws, regulations, and policies.”

– California Coastal Commission EJ Policy (2019)

“the fair treatment and meaningful involvement of all people regardless of race, color, national origin, or income with respect to the development, implementation and enforcement of environmental laws, regulations, and policies.”

– United States Environmental Protection Agency,
Office of Environmental Justice

WHAT DOES ENVIRONMENTAL JUSTICE LOOK LIKE TO YOU?

JOIN EASYRETRO

FROM YOUR COMPUTER:

<https://tinyurl.com/WPO3CAB2>

Link will be shared in the chat!

FROM YOUR MOBILE DEVICE:



1. Open your phone's camera;
2. Hover your camera over the QR code;
3. Select a question;
4. Click the + sign
5. Type your response!

NEED ANOTHER OPTION?

Type in the chat or unmute yourself and we will add your response to EasyRetro for you!

WHAT COULD ENVIRONMENTAL JUSTICE LOOK LIKE?

Procedural	Substantive
Language translation and interpreter services	Maximize access and recreational opportunities at or near wetland resource areas
Location and scheduling of public meetings/hearings	Ability to take action on applications or condition permits based on project impacts to EJ communities
Distributing project information to affected or nearby communities/neighborhoods	Consideration of alternatives where project may impact EJ communities
Expanding public comment opportunities/methods	Requiring tree plantings in low-canopy areas to promote cooling and climate change mitigation
Tribal notification and consultation	Community benefit agreements
Remote vs. in-person meetings and hearings	Where EJ communities impacted, exemptions and/or administrative approvals don't apply

**Please note that these are examples of possible opportunities; not all of these examples may apply to this particular project or to Boston.

ENVIRONMENTAL JUSTICE IN BOSTON

Why are we discussing environmental justice in the context of the Boston Wetlands Ordinance?

ENVIRONMENTAL JUSTICE IN BOSTON

Section 7-1.4(p) – Climate Equity and Environmental Justice

The Commission may issue regulations and guidelines addressing climate equity and environmental justice for inclusion within the Climate Change Resilience planning considerations.

2019 Executive Order Relative to Racial Equity and Leadership, Martin J. Walsh

Application of racial equity framing to policies, practices, attitudes, and culture, and implementation of changes to and construction of policies, practices, attitudes and culture identified through this lens and prioritization of engagement and outreach to support more inclusive, efficient, and effective community participation.

COMMUNITY ENGAGEMENT

In addition to the creation of the environmental justice regulations and guidelines themselves, the CAB is instrumental in supporting the Ordinance's mandate that the Commission directly engage residents and neighborhoods that may be adversely affected by disparate impacts of climate change in the rulemaking process.



ENVIRONMENTAL JUSTICE IN MASSACHUSETTS - 2021 CLIMATE ACT

“An Act creating a next-generation roadmap for Massachusetts climate policy.”

Environmental Justice: protection from environmental pollution and the ability to live in and enjoy a clean and healthy environment, regardless of race, color, income, class, handicap, gender identity, sexual orientation, national origin, ethnicity or ancestry, religious belief or English language proficiency, which includes:

1. The meaningful involvement of all people with respect to the development, implementation and enforcement of environmental laws, regulations, and policies, including climate change policies; and
2. The equitable distribution of energy and environmental benefits and environmental burdens.

ENVIRONMENTAL JUSTICE IN MASSACHUSETTS - 2021 CLIMATE ACT

BENEFITS

Access to clean natural resources, including:

- water resources;
- open space;
- recreational facilities;
- clean renewable energy resources;
- environmental enforcement; and more.

BURDENS

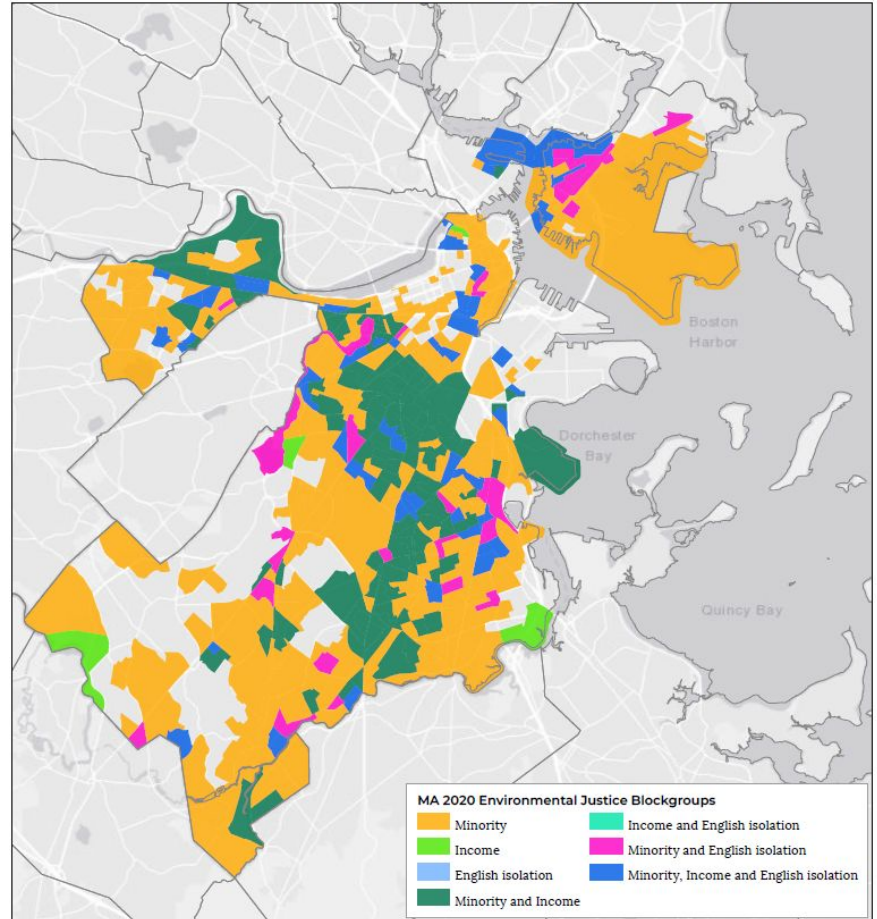
Destruction, damage, or impairment of natural resources resulting from reasonably foreseeable or intentional causes, including:

- climate change;
- air pollution;
- water pollution;
- improper sewage disposal;
- dumping of solid and hazardous waste;
- activities that limit access to natural resources and recreation;
- inadequate remediation of pollution;
- reduction of groundwater levels;
- impairment of water quality;
- increased flooding or storm flowage; and
- damage to wetlands and open space.

ENVIRONMENTAL JUSTICE IN MASSACHUSETTS - 2021 CLIMATE ACT

Environmental justice populations (neighborhood level):

1. Annual median household income is not more than 65% of statewide annual median household income;
2. Minorities comprise 40% or more of the population;
3. 25% or more of households lack English language proficiency; OR
4. Minorities comprise 25% or more of the population and the annual median household income of the municipality does not exceed 150% of the statewide annual median household.



IDENTIFYING ENVIRONMENTAL JUSTICE COMMUNITIES

The **California Coastal Commission EJ Policy** identifies EJ communities as those that are disadvantaged, marginalized, underserved, which encompass low-income areas that are disproportionately affected by environmental pollution and other hazards that can lead to negative health effects, exposure, or environmental degradation.

The **Providence Climate Justice Plan** identifies EJ communities as Frontline Communities, which are communities of color most impacted by the crises of ecology, economy and democracy, including the Indigenous, African-American, Black, Latinx, and Southeast Asian communities, which a particular emphasis on people of color who are refugees and immigrants, people with criminal records, those who speak languages other than English, and LGBTQ.

DISCUSSION

- What did you hear in this presentation that resonated with you?
- Did you feel that anything was missing from the definitions of environmental justice presented? Was anything missing from the definitions of environmental justice populations?
- Are there ways these definitions of environmental justice can be applied to Boston's wetland resources? What would you change?
- What are some procedural or substantive policies that can be made to make Boston's wetland regulations more just?

COMMUNITY ADVISORY BOARD MEETING #2

NEXT STEPS

A scenic view of a pond with a wooden bridge, surrounded by tall reeds and trees under a blue sky. The text 'NEXT STEPS' is overlaid on the left side of the image.

NEXT STEPS

- **CAB MEETING #2 Post-Meeting Survey** → To be shared via email
- **CAB MEETING #3** → To be scheduled in early November
- **Outreach “homework” for CAB members**
- **Any final thoughts or questions?**

A blue-tinted photograph of a forest path. The path is dirt and leads into a dense forest of tall, thin trees. The ground is covered in fallen leaves and branches. The text "THANK YOU!" is overlaid in the center in a bold, white, sans-serif font.

THANK YOU!