

387- 397 DUDLEY STREET

EXISTING CONDITIONS



Front (northeast) elevation

387-397 DUDLEY ST
ROXBURY, MA

387-397 Dudley St

EXISTING CONDITIONS



PROPOSED BUILDING



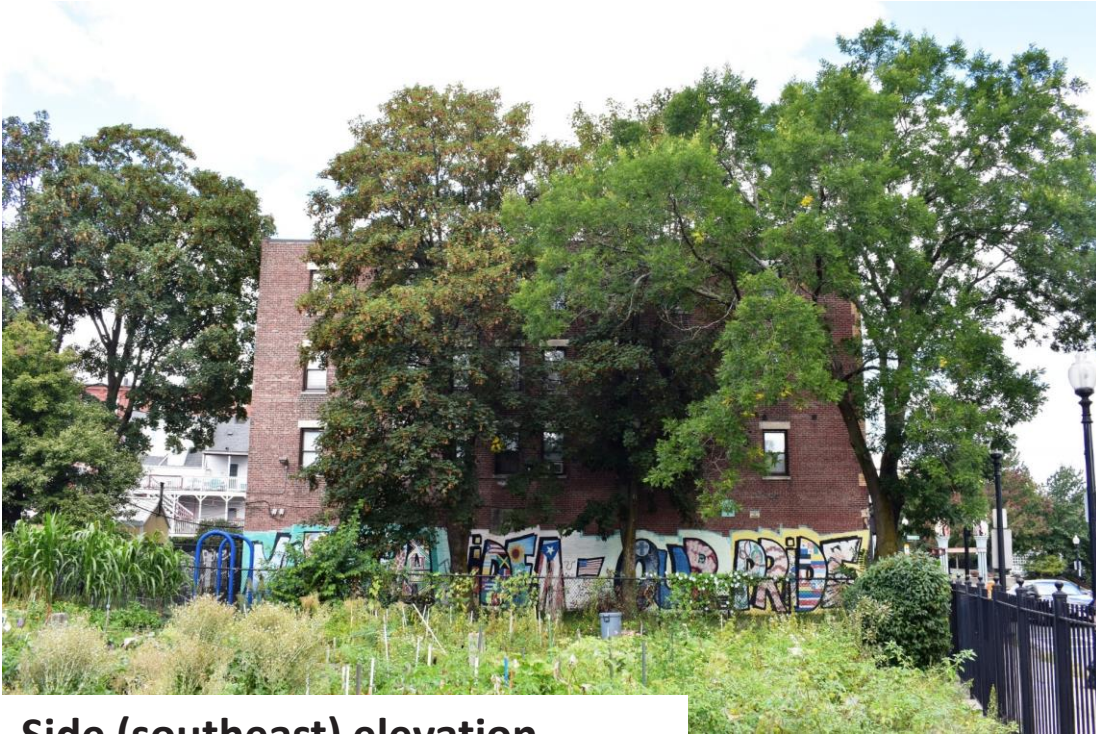
387-397 DUDLEY ST
ROXBURY, MA



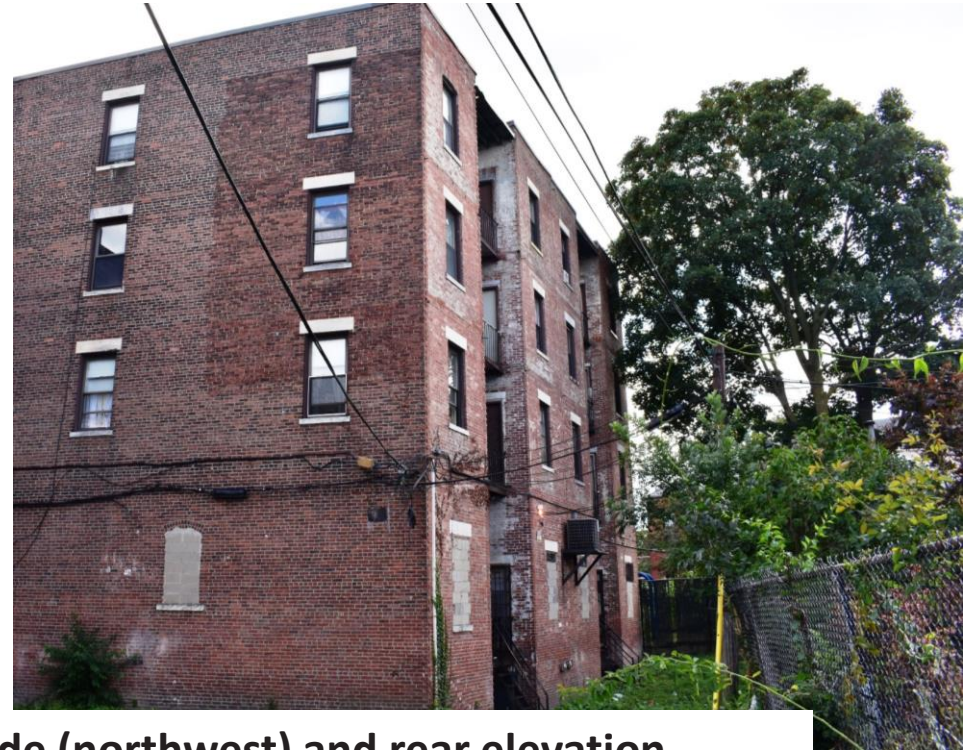
OUR COMMUNITY | WORKING TOGETHER

387- 397 DUDLEY STREET

EXISTING CONDITIONS



Side (southeast) elevation



Side (northwest) and rear elevation

387-397 DUDLEY ST
ROXBURY, MA



OUR COMMUNITY | WORKING TOGETHER

387- 397 DUDLEY STREET

EXISTING CONDITIONS



Commercial space at 397 Dudley



Residential entrance



Entrance hall

387- 397 DUDLEY STREET

EXISTING CONDITIONS



Typical unit hall



Typical unit bedroom



Typical unit kitchen

387- 397 DUDLEY STREET

ELEVATIONS



**Residential Entrance
Facing Community Garden
Southeast Elevation**



**Dudley Street Elevation
Storefront Entrance
Northeast Elevation**

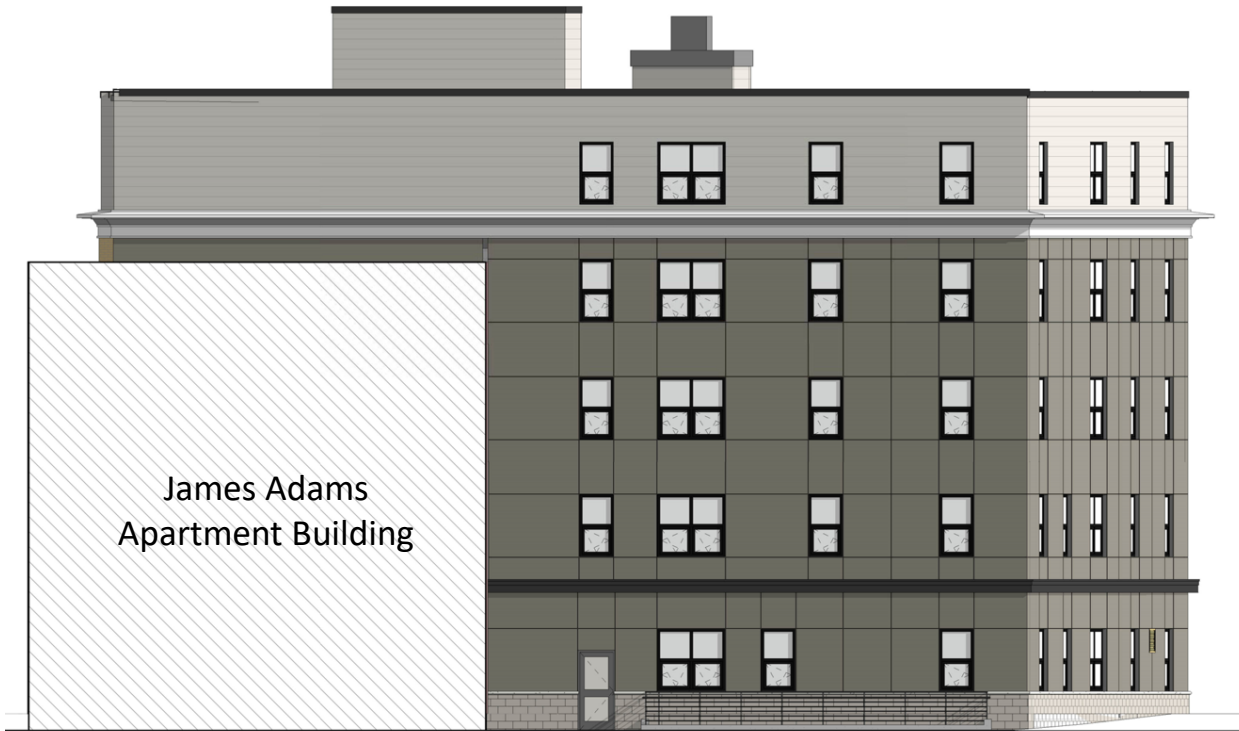
**387-397 DUDLEY ST
ROXBURY, MA**



OUR COMMUNITY | WORKING TOGETHER

387- 397 DUDLEY STREET

ELEVATIONS



Northwest Elevation



Rear Southwest Elevation

387-397 DUDLEY ST
ROXBURY, MA



OUR COMMUNITY | WORKING TOGETHER

387- 397 DUDLEY STREET

PROPOSED BUILDING



387-397 DUDLEY ST
ROXBURY, MA



DAVIS
SQUARE
ARCHITECTS



OUR COMMUNITY | WORKING TOGETHER

387-397 Dudley St

PROPOSED BUILDING

Approved May 2020



387-397 DUDLEY ST
ROXBURY, MA



DAVIS
SQUARE
ARCHITECTS



NUESTRA
COMUNIDAD
DEVELOPMENT CORPORATION

OUR COMMUNITY | WORKING TOGETHER

387- 397 DUDLEY STREET

Approved in May 2020

ELEVATIONS



Residential Entrance
Facing Community Garden
Southeast Elevation



Dudley Street Elevation
Storefront Entrance
Northeast Elevation

387-397 DUDLEY ST
ROXBURY, MA

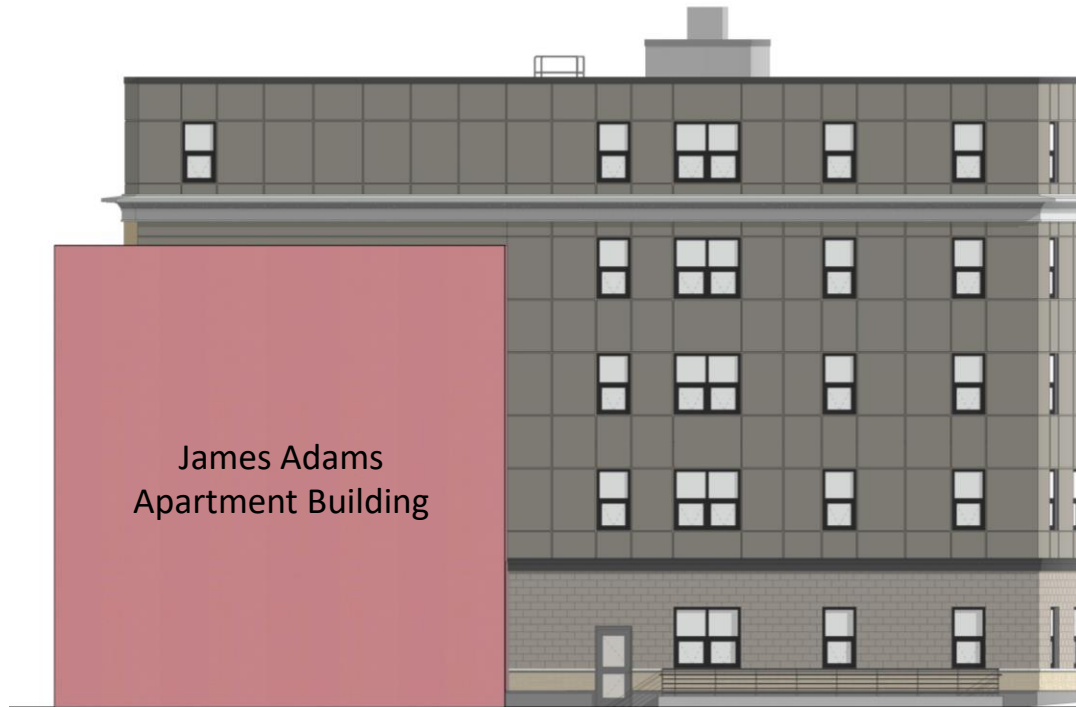


OUR COMMUNITY | WORKING TOGETHER

387- 397 DUDLEY STREET

Approved in May 2020

ELEVATIONS



Northwest Elevation



Rear Southwest Elevation

387-397 DUDLEY ST
ROXBURY, MA



OUR COMMUNITY | WORKING TOGETHER