

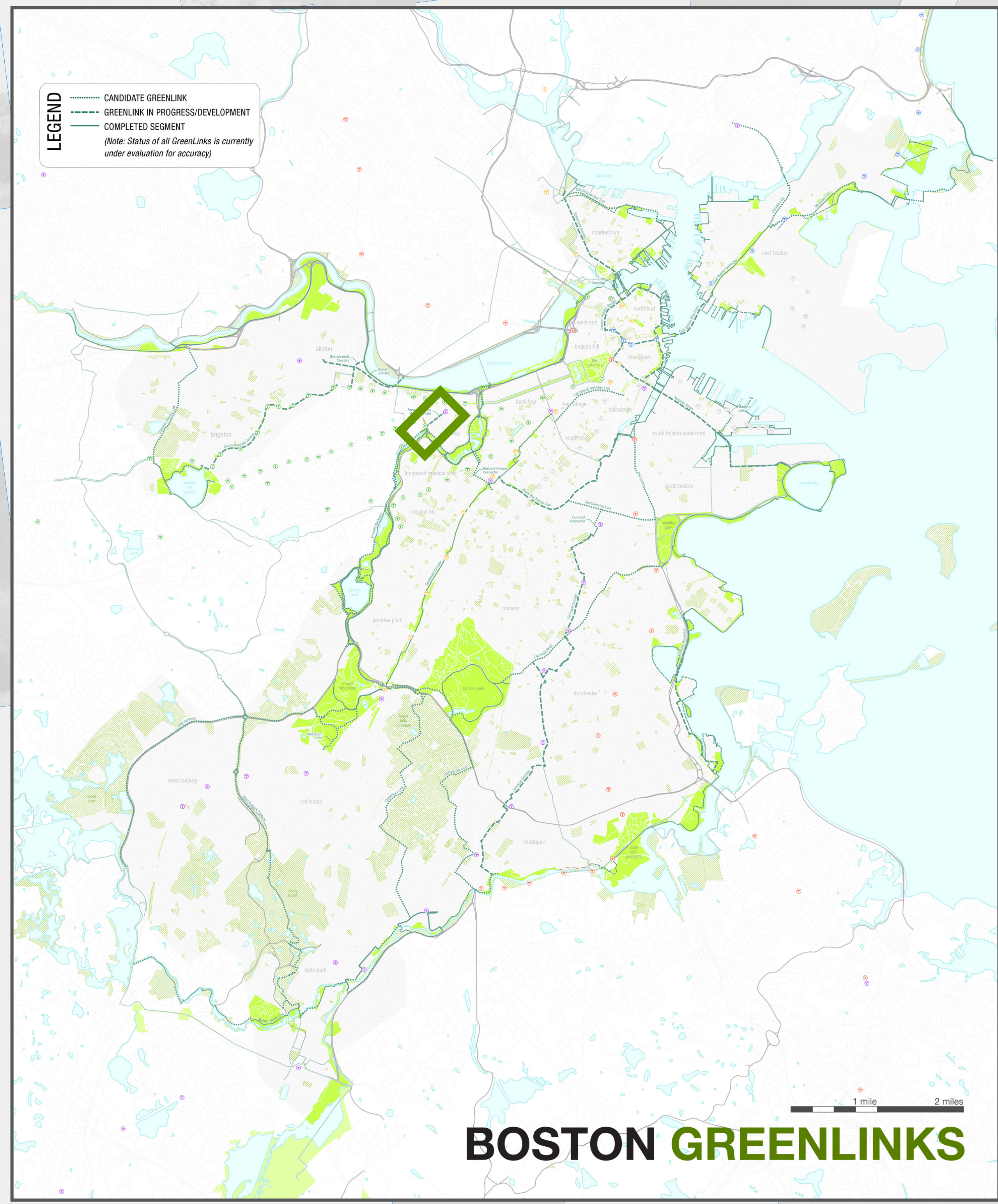
On-street connection to Maitland St & Lansdowne Commuter Rail Station

Section to be completed by others (Landmark Center/401 Park)

Path under Park Dr, avoiding conflicts with vehicles; direct connection to Green Line D Branch at Fenway Station

Direct connection to the Emerald Necklace in Brookline

What is a "Green Link"?
Green Links are missing bike and pedestrian connections that, when completed, will create a seamless network of greenway paths called the "Emerald Network." Green Links include off-road paths, protected bike lanes, safer road crossings, and low-traffic streets also known as "neighborways".



The Fenway Multiuse Path is a proposed Green Link that would extend from the Emerald Necklace Muddy River Path to Maitland Street adjacent to the Green Line D Branch right of way.

