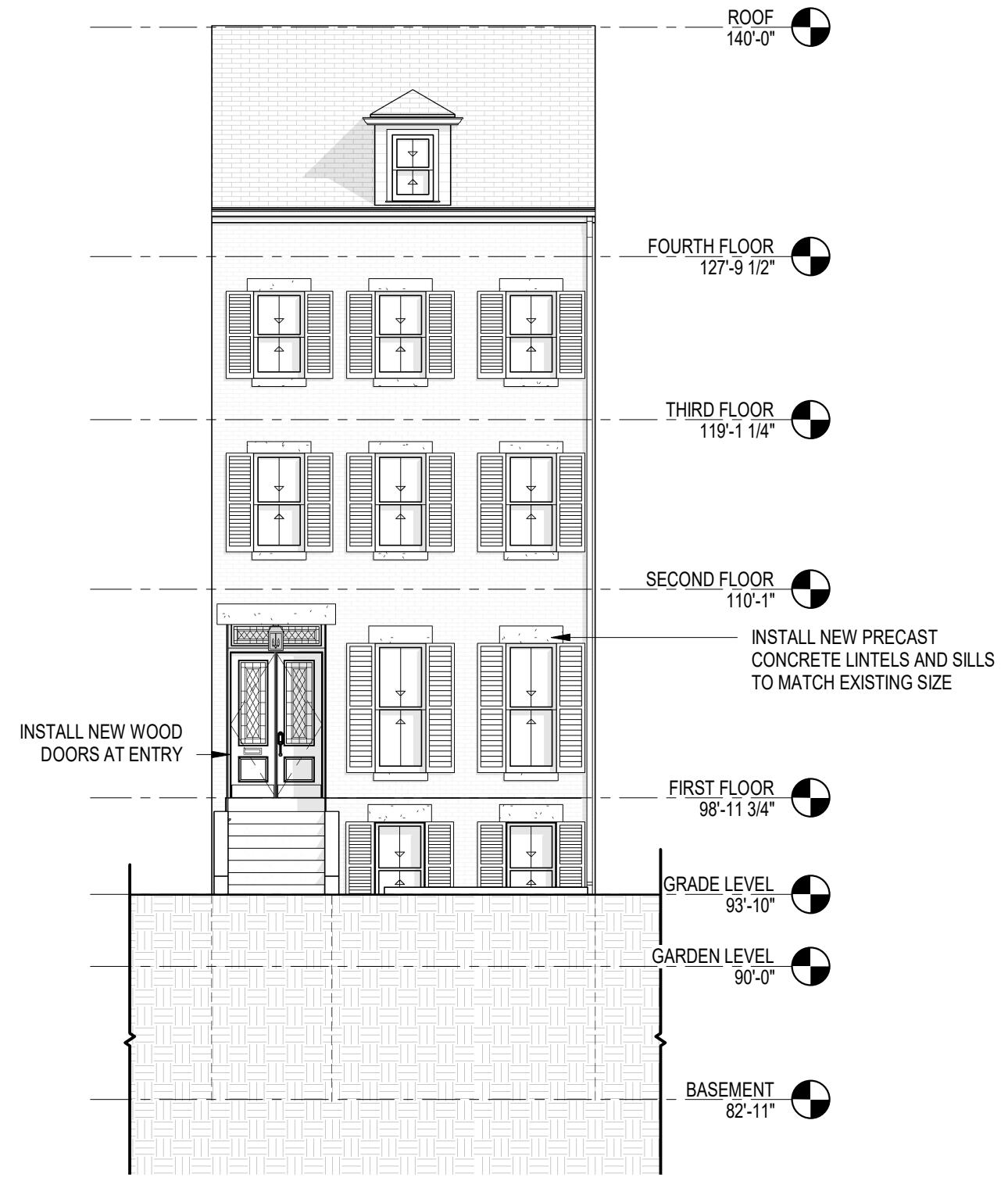




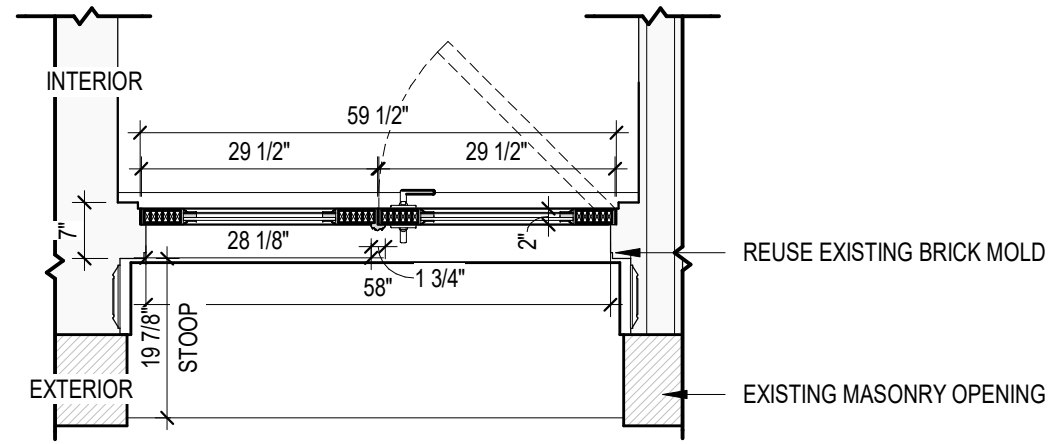
155 W. Brookline Street
Front elevation



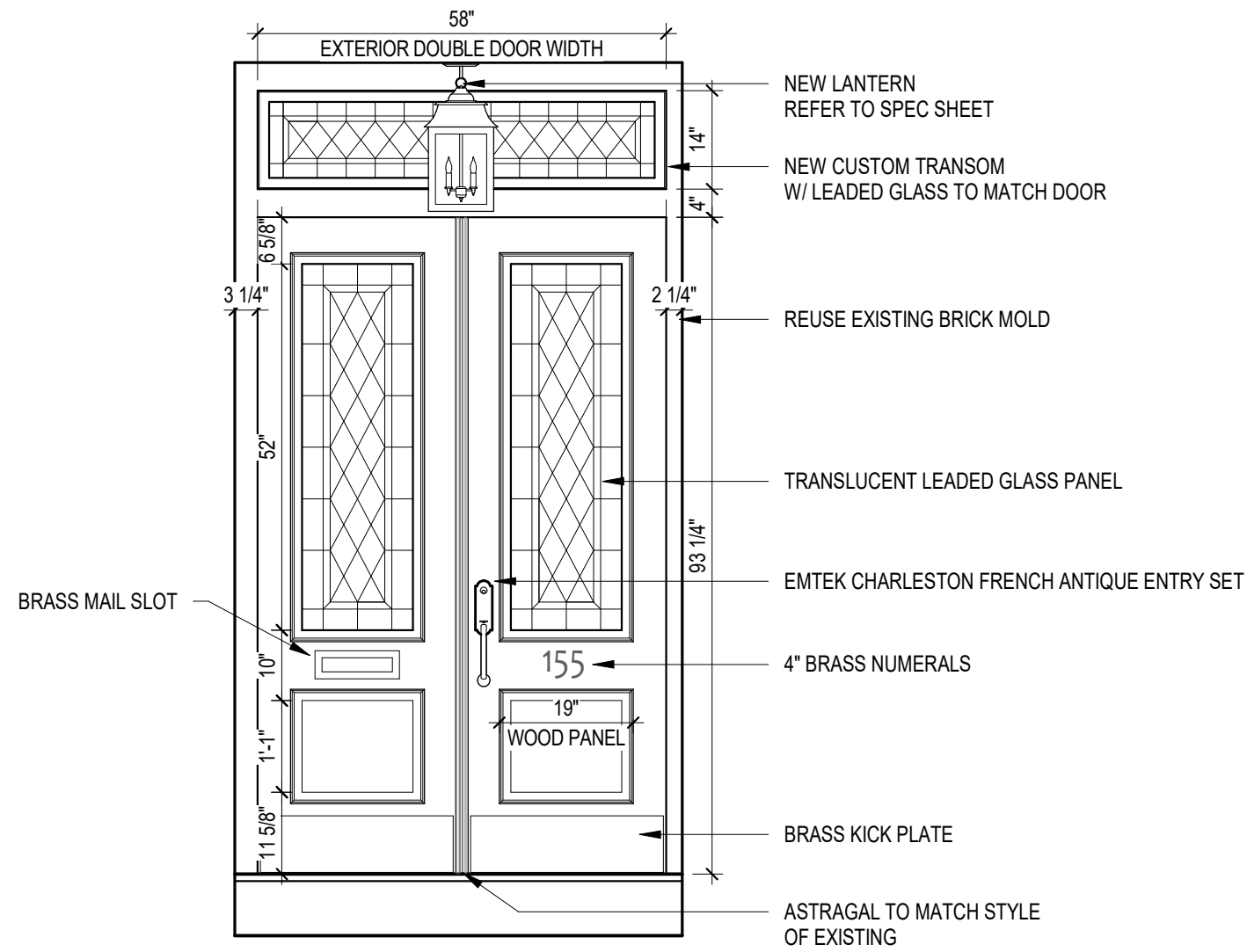
① SOUTH EXISTING
1/8" = 1'-0"



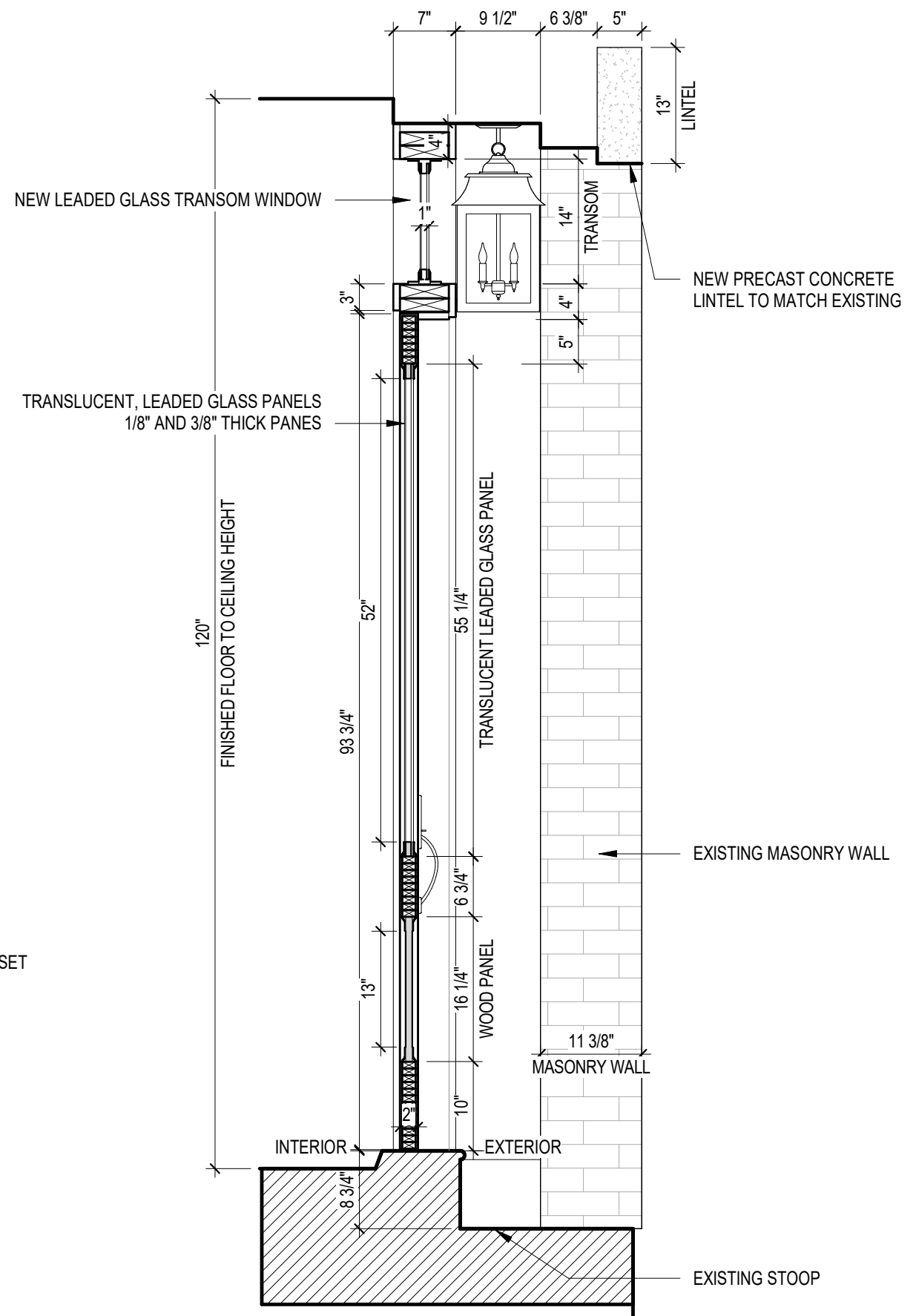
② SOUTH PROPOSED
1/8" = 1'-0"



○ NEW FRONT DOOR PLAN
1/2" = 1'-0"



○ NEW FRONT DOOR EXTERIOR ELEV.
1/2" = 1'-0"



○ NEW FRONT DOOR SECTION
3/4" = 1'-0"



155 W. Brookline St. Front Door 2021



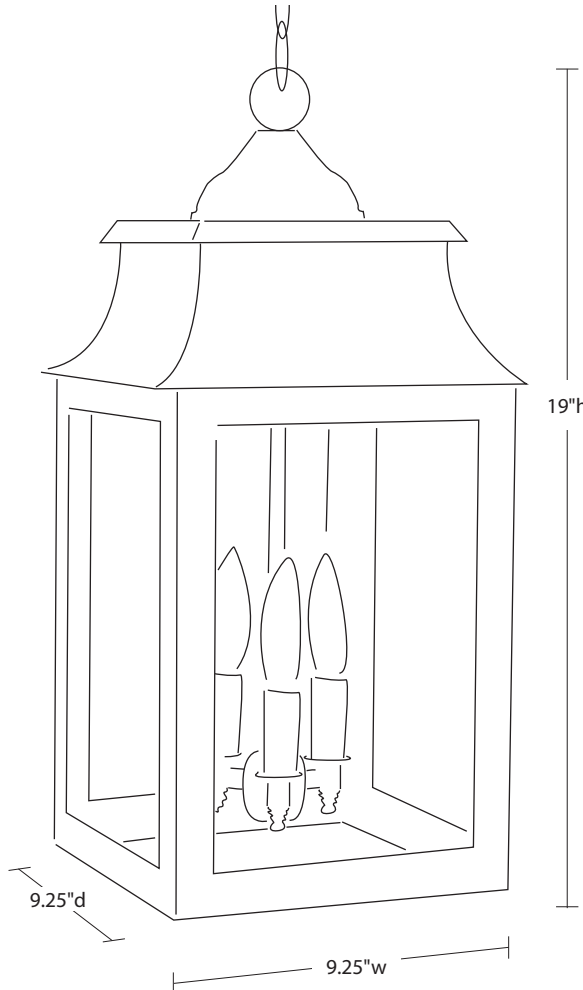
Front Door Detail looking Up
155 W. Brookline Street



155 W. Brookline Street
Front Door Detail



NORTHEAST™ — LANTERN —



5632

Concord Collection
Hanging

Dimensions

Width: 9.25"

Depth: 9.25"

Height: 19"

Mounting Area:

5" diam. ceiling canopy.
36" chain & wire.

Socket Option(s)

(LT3) Candelabra Base; 60 watt max

UL & cUL Listed

Suitable for damp locations

Finishes

AB - Antique Brass

DAB - Dark Antique Brass

DB - Dark Brass

VG - Verdi Gris

AC - Antique Copper

Glass Options

CLR - Clear

CSG - Clear Seedy

FST - Frosted

SMG - Seedy Marine



© 2021. Northeast Lantern, LLC.

6 Commerce Way | Exeter, NH 03833 | Phone: 800-892-1206 | Fax: 888-477-6649

email: info@northeastlantern.com

www.northeastlantern.com | made in the USA

EXPLORE OUR NEW PRODUCT LOOKBOOK [HERE](#)

EMTEK[®]

Finish is unlacquered brass with
Providence knob

Harrison Mortise



Description

- Can be ordered with any Brass Knob, Crystal & Porcelain or Lever
- Sold as complete set. Includes Latch and Strike Plate
- For pricing information, contact any EMTEK[®] dealer

Technical Specs

- 2-1/2" or 2-3/4" Backsets
- Standard Mortise Door Prep ANSI A115.1
- UL Listed Mortise with ANSI F20 or F13 Function
- Schlage C Keyway
- Handing required for All Mortise Locks

Technical Specification

Upgrade to UL Listed

EXPLORE OUR NEW PRODUCT LOOKBOOK [HERE](#)

EMTEK®

Providence Knob

Finish is unlacquered brass



Description

- Can be ordered with any Brass rosette
- Sold as complete set. Includes Latch and Strike Plate
- 28 Degree Latch is available for additional charge
- For pricing information, contact any Emtek® dealer

Upgrade to CF Mechanism

Technical Specs

- Fits any door between 1-3/8" to 2-1/4" thick with a 2-1/8" bore standard door prep*
- Standard latch is for 2-3/8" backset. Specify 2-3/4" backset if required

* STRETTO rosette requires a 1-1/4" diameter bore hole and 2-hole door preparation for thumbturn privacy

Technical Specifications

Product Codes

Regular Rosette Style:

- Passage Set - 8100
- Privacy Set - 8200
- Dummy, Pair - 8050

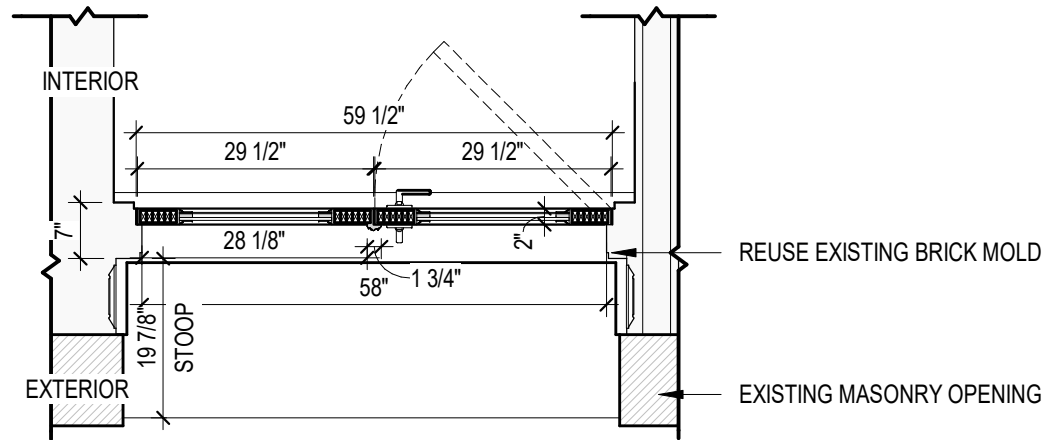
Rope Rosette Style:

- Passage Set - 8101
- Privacy Set - 8201
- Dummy, Pair - 8051

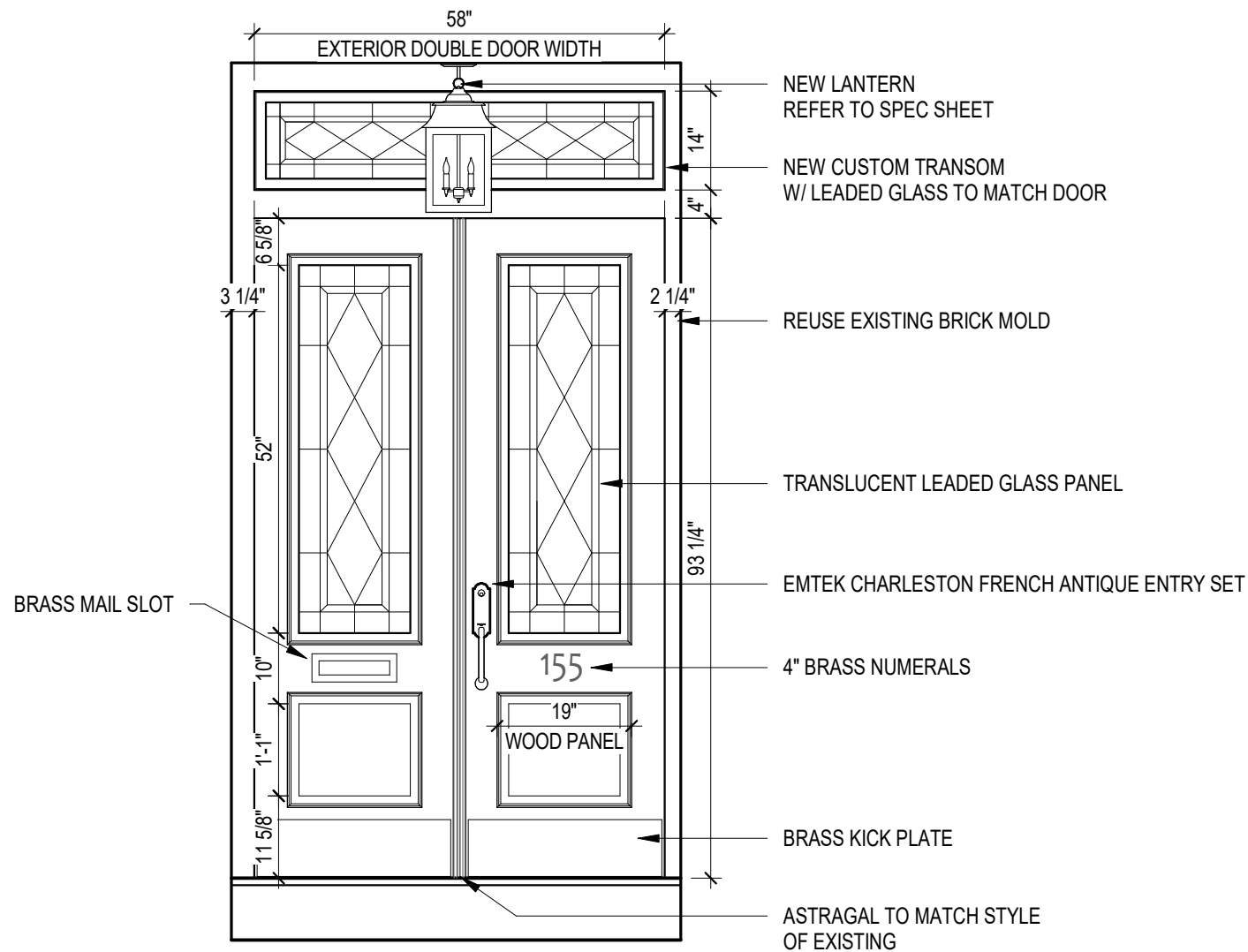
Lancaster Rosette Style:

- Passage Set - 8106
- Privacy Set - 8206
- Dummy, Pair - 8056

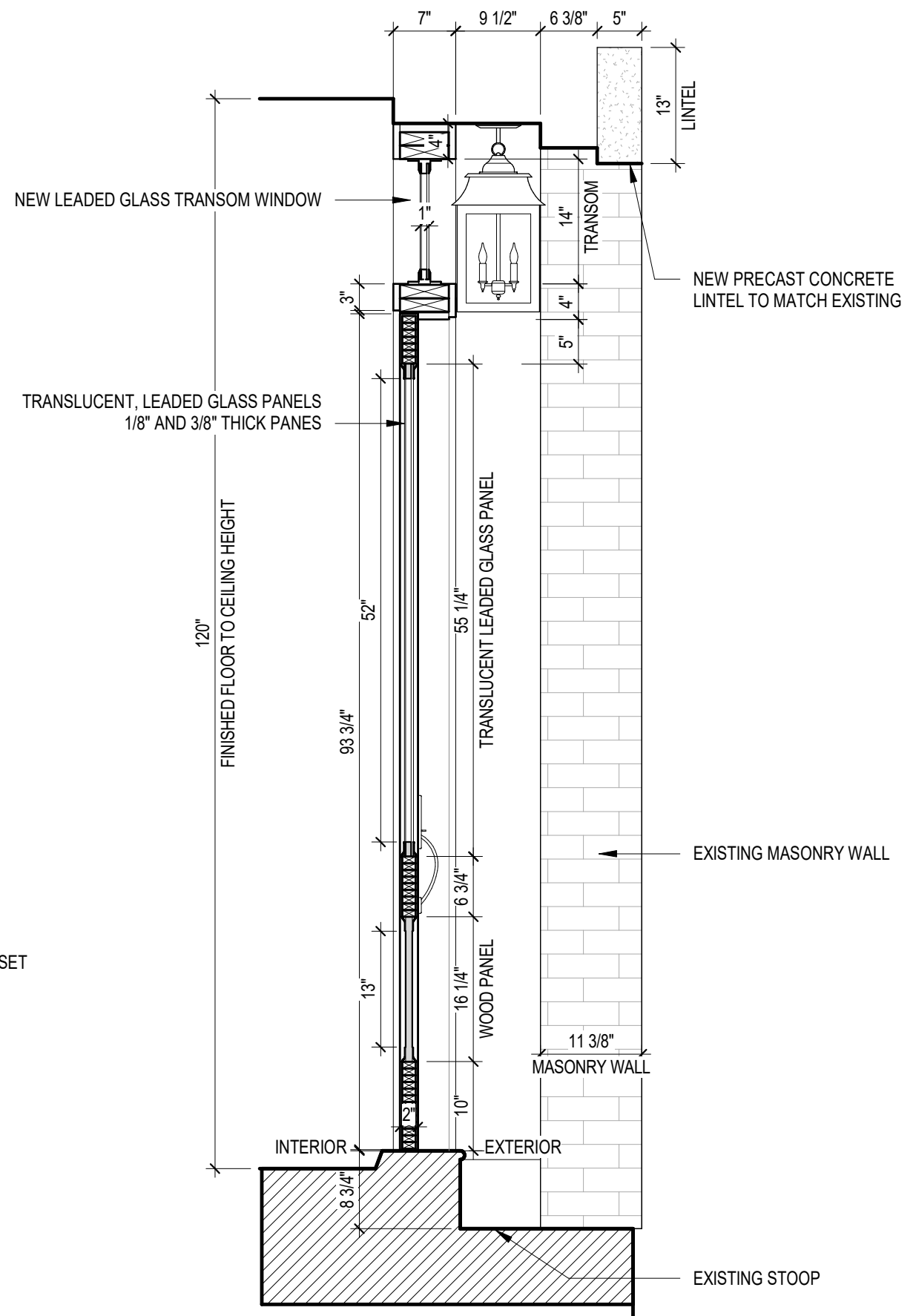




○ NEW FRONT DOOR PLAN
1/2" = 1'-0"



○ NEW FRONT DOOR EXTERIOR ELEV.
1/2" = 1'-0"



○ NEW FRONT DOOR SECTION
3/4" = 1'-0"