

Improvements to BAY VILLAGE NEIGHBORHOOD PARK

Community Meeting 1

12, May 2021



How to use Zoom Webinar

Please note during this presentation, attendees can see the presenters but we can't see you. Here is how you can participate during the question and answer part of the presentation.

Joining via Phone? (dial)

*9 to raise hand

*6 to unmute/mute

Joining via web (i.e computer, tablet, etc?)



Use to raise your hand during Q&A

Click here to enter your questions throughout presentation

AGENDA

- 1** PROJECT TEAM INTRODUCTION
- 2** PROJECT OVERVIEW
- 3** PRESENTATION
Existing Conditions Assessment
- 4** COMMUNITY FEEDBACK
Listening + Discussion
- 5** CLOSING REMARKS + NEXT STEPS



ANNIE BLAIR

Project Manager
annie.blair@boston.gov, 617-961-3028

CHRISTINE BRANDAO

Outreach Coordinator
christine.brandao@boston.gov, 617-961-3006

JAMES HEROUX

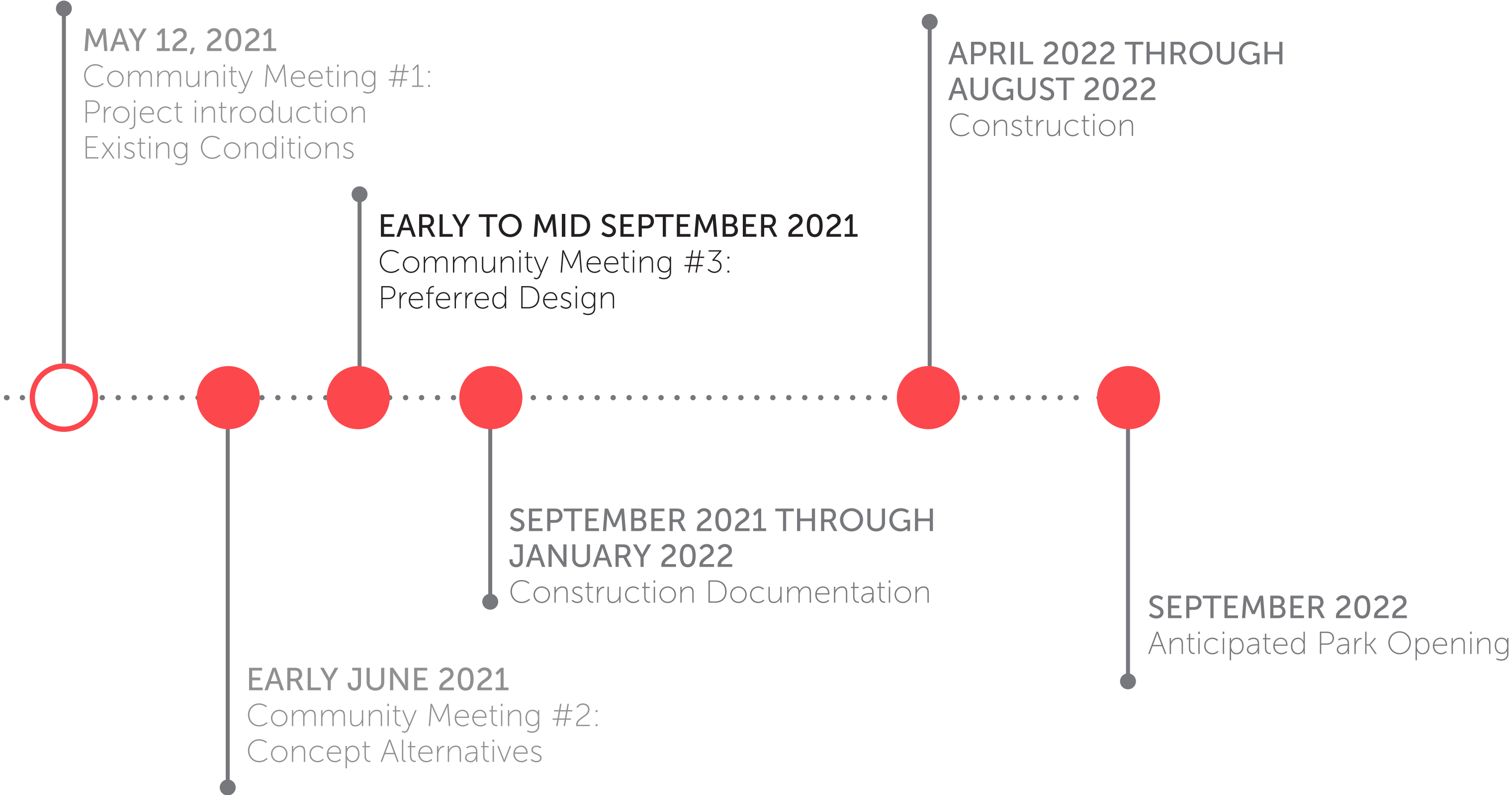
Principal
Copley Wolff Design Group

AARON KRAEMER

Landscape Architect
Copley Wolff Design Group



PROJECT SCHEDULE





CITY OF BOSTON PRIORITIES

- 1 ACCESSIBILITY AND INCLUSIVITY
- 2 EXPANDING WALKING ACCESS TO PARKS
- 3 EQUITY
- 4 HEALTH
- 5 COMMUNITY BUILDING



PARKS AND RECREATION AND NEIGHBORHOOD GOALS

PARKS AND RECREATION GOALS

- 1 ACCESSIBLE AND AVAILABLE TO ALL
- 2 RESTORE AND REDEVELOP WATER FEATURE INTO A FULLY FUNCTIONAL WATER FOUNTAIN
- 3 INTRODUCE PERMANENT SEATING INTO THE PARK
- 4 ADAPTIVE AND RESILIENT LANDSCAPES
- 5 PROMOTE CONNECTIONS

NEIGHBORHOOD GOALS FROM THE EDWARD INGERSOLL BROWNE FUND APPLICATION

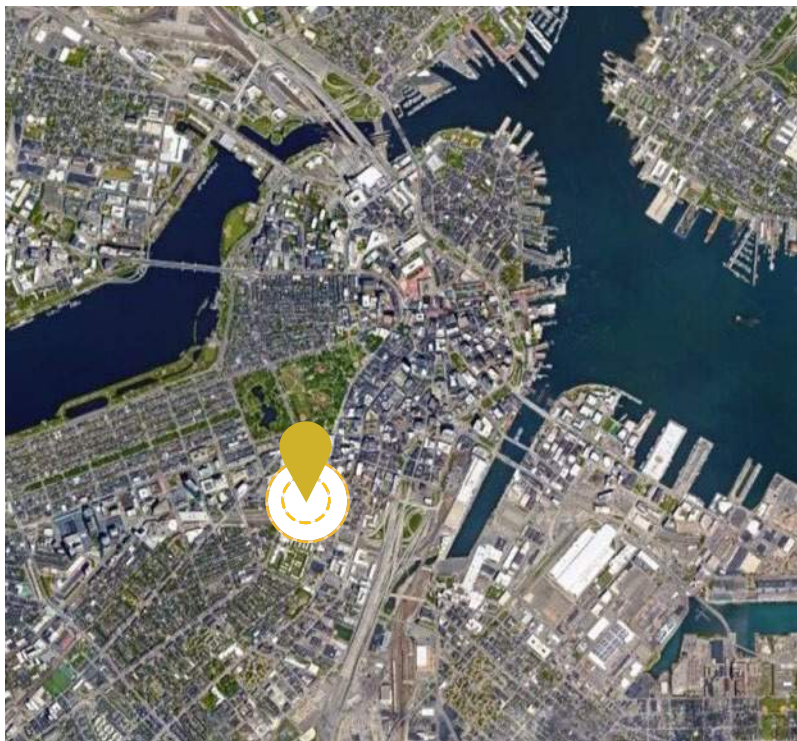
- 1 RETOUCH AND REPAIR CURRENT IRON BOUNDARY FENCE
- 2 RESTORE AND REDEVELOP WATER FEATURE INTO A FULLY FUNCTIONAL WATER FOUNTAIN
- 3 INTRODUCE PERMANENT SEATING INTO THE PARK
- 4 REPAIR OR REPLACE BLACK IRRIGATION BOX
- 5 INTRODUCE ELECTRICITY INTO PARK FOR SPECIAL EVENTS, PERFORMANCES AND SEASONAL LIGHTING



EXISTING CONDITIONS ASSESSMENT



PROJECT LOCATION



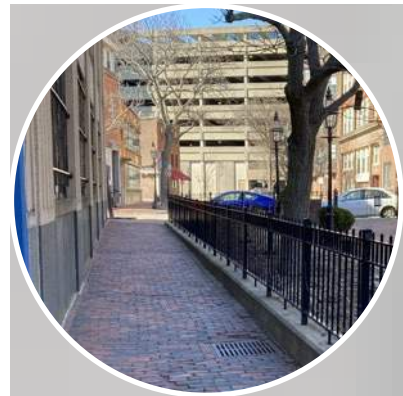
CITY-SCALE AERIAL



NEIGHBORHOOD-SCALE AERIAL



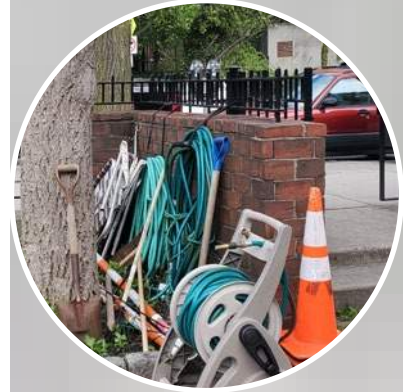
SITE INVENTORY PLAN



EXISTING PATHWAY AT THE BOSTON CHINESE CHURCH



EXISTING BRICK RAISED PERIMETER PLANTERS



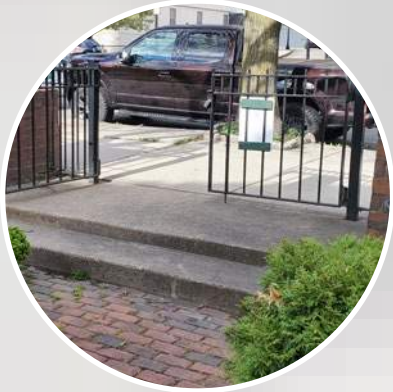
EXISTING GARDEN TOOL STORAGE AT PARK



EXISTING GAS LAMPS (8) TOTAL IN PARK



EXISTING FOUNTAIN



EXISTING STEPS AT CHARLES STREET ENTRANCE



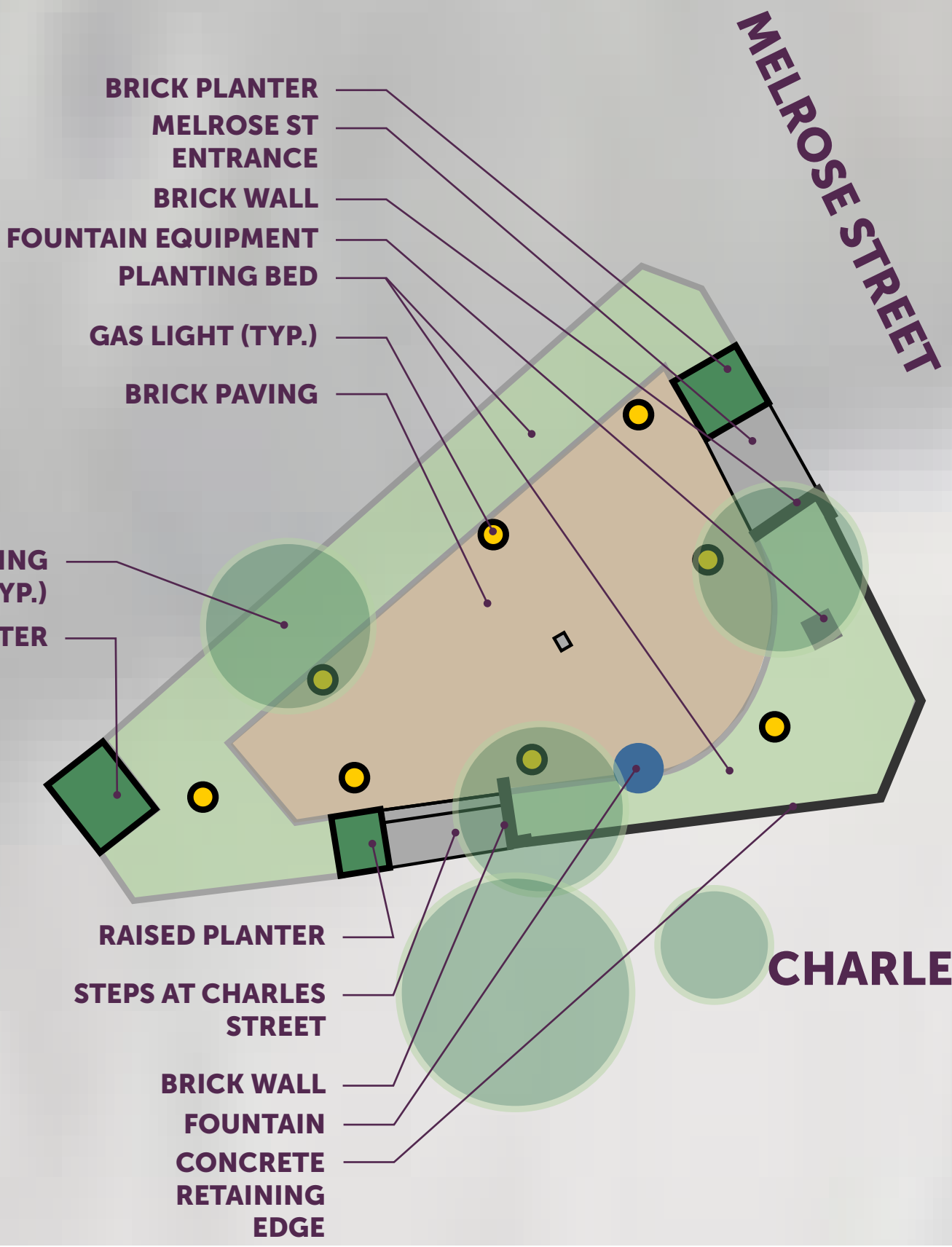
EXISTING MELROSE STREET ENTRANCE



EXISTING PLANTING BEDS

FAYETTE STREET

STREET



MELROSE STREET

BROADWAY

CHARLES STREET SOUTH

SITE INVENTORY IMAGES



Existing fountain- does not recycle water



Grade change and existing concrete retaining wall at edge along Charles Street



Memorial plaque in planting bed



Planting bed at the park edge adjacent to the Chinese church



Raised planter at corner of Fayette Street



Raised planter at Melrose Street entrance



Raised planter at Charles Street entrance

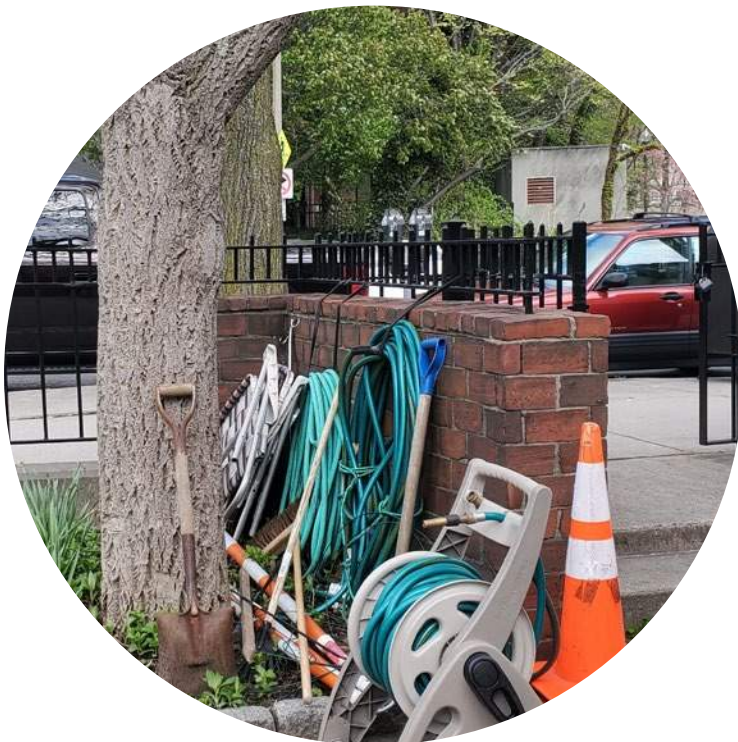


Inaccessible Charles Street entrance

SITE INVENTORY IMAGES



Existing gas lighting, 8 fixtures in total



Garden tool storage along Charles Street South



Garbage cans at corner of Charles and Melrose



Fountain mechanical equipment box, in need of repair



View looking towards corner of Melrose and Charles, showing grade change



Melrose Street entrance



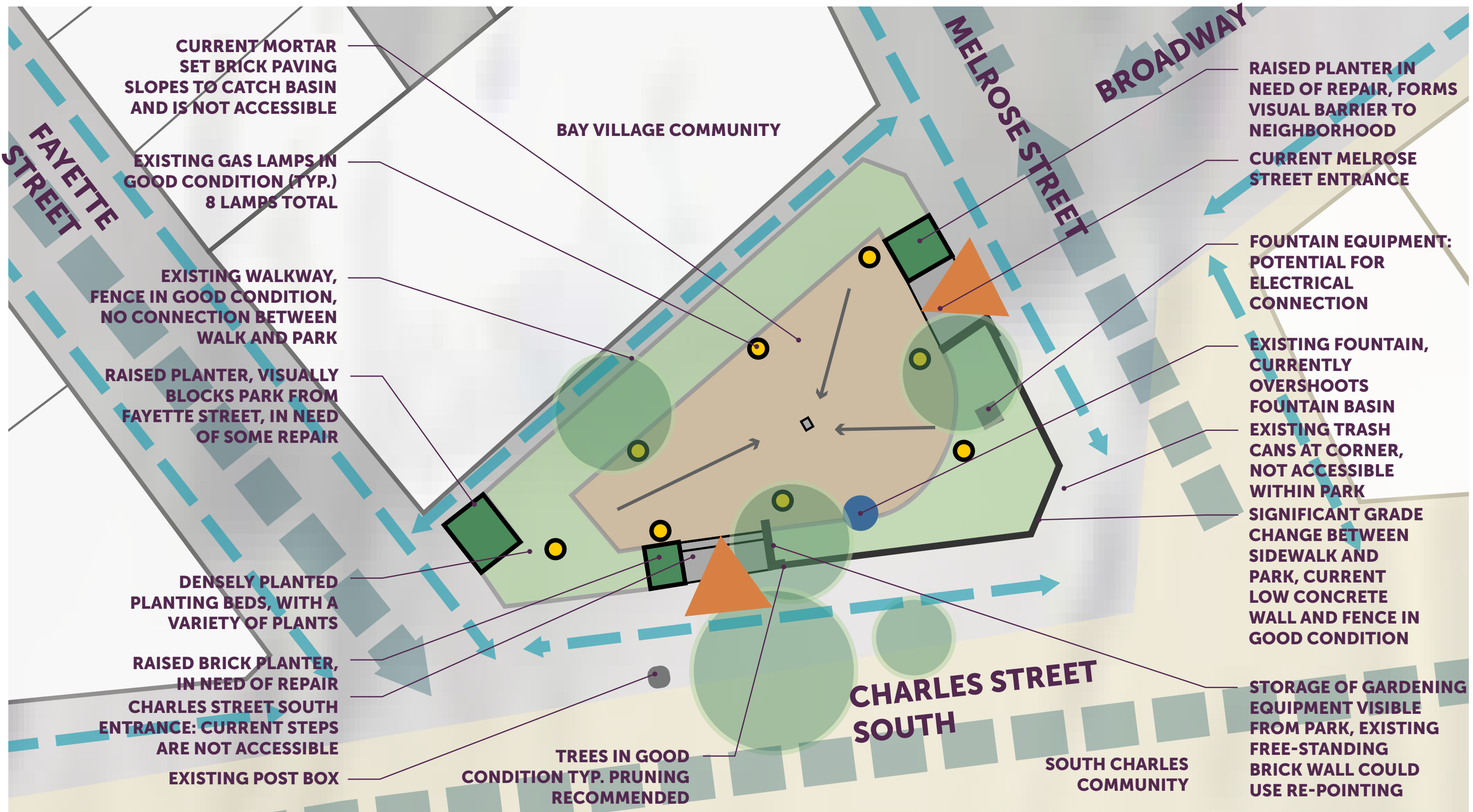
Passageway in front of the adjacent church



Planting bed along Charles Street



SITE ANALYSIS PLAN



COMMUNITY FEEDBACK AND DISCUSSION



TELL US MORE ABOUT THE EVENTS THAT TAKE PLACE AT BAY VILLAGE NEIGHBORHOOD PARK!

HOW CAN THE PARK BE MORE CONNECTED TO BAY VILLAGE?

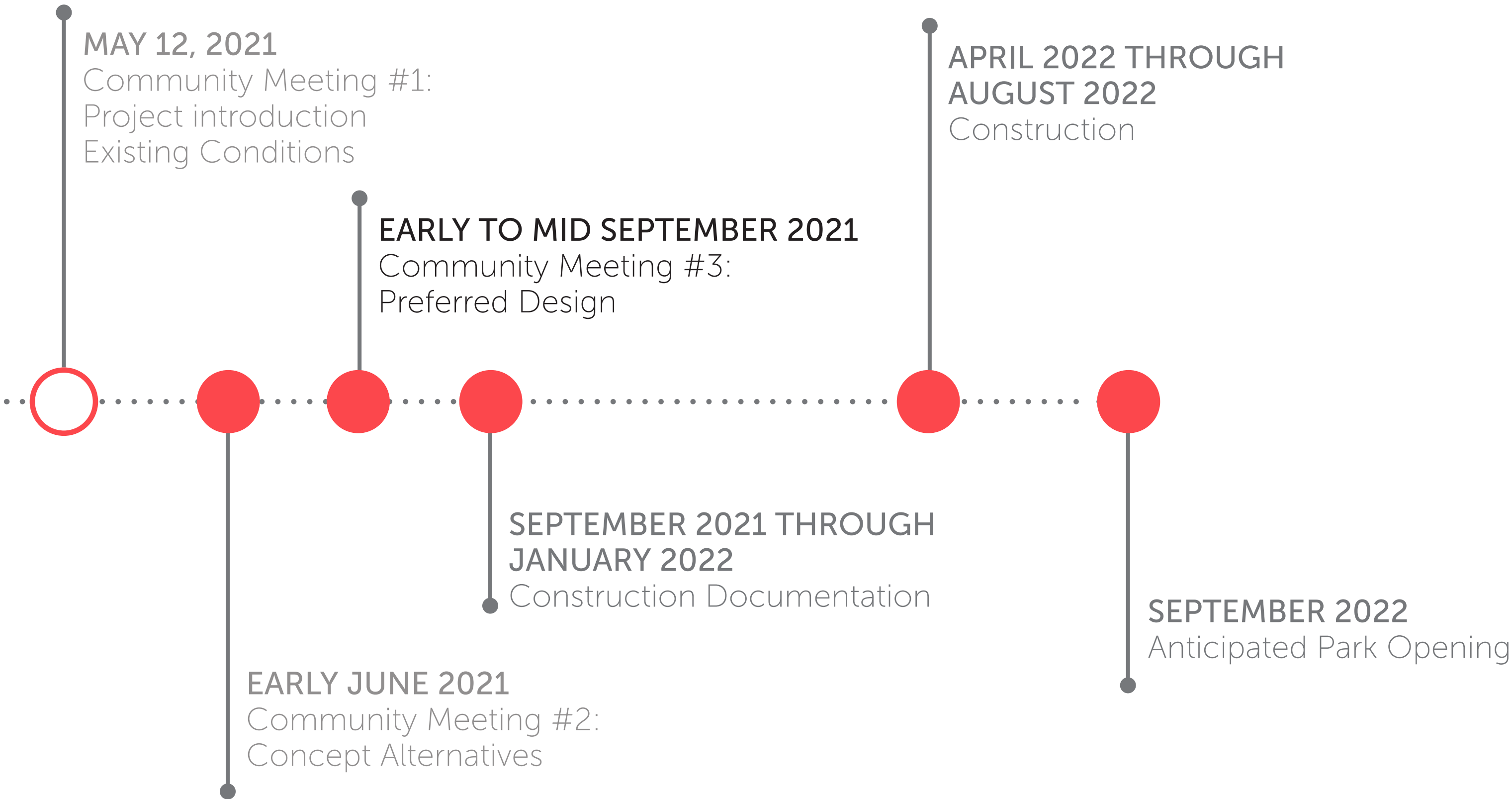
WHAT DO YOU WANT TO SEE AT BAY VILLAGE NEIGHBORHOOD PARK IN THE FUTURE?

WHAT GROUPS USE THE PARK?

WHAT IS YOUR FAVORITE PART OF BAY VILLAGE NEIGHBORHOOD PARK TODAY?



PROJECT SCHEDULE



THANK YOU FOR JOINING!

PLEASE VISIT THE WEBSITE:

[https://www.boston.gov/departments/parks-and-recreation/
improvements-bay-village-neighborhood-park](https://www.boston.gov/departments/parks-and-recreation/improvements-bay-village-neighborhood-park)



Scan me with your
phone's camera!

WE LOOK FORWARD TO PLANNING A PARK WITH YOU!