

301 Berkley Unit 1A

Applicant: Marc Kaplan

Architect: Marcus Gleysteen

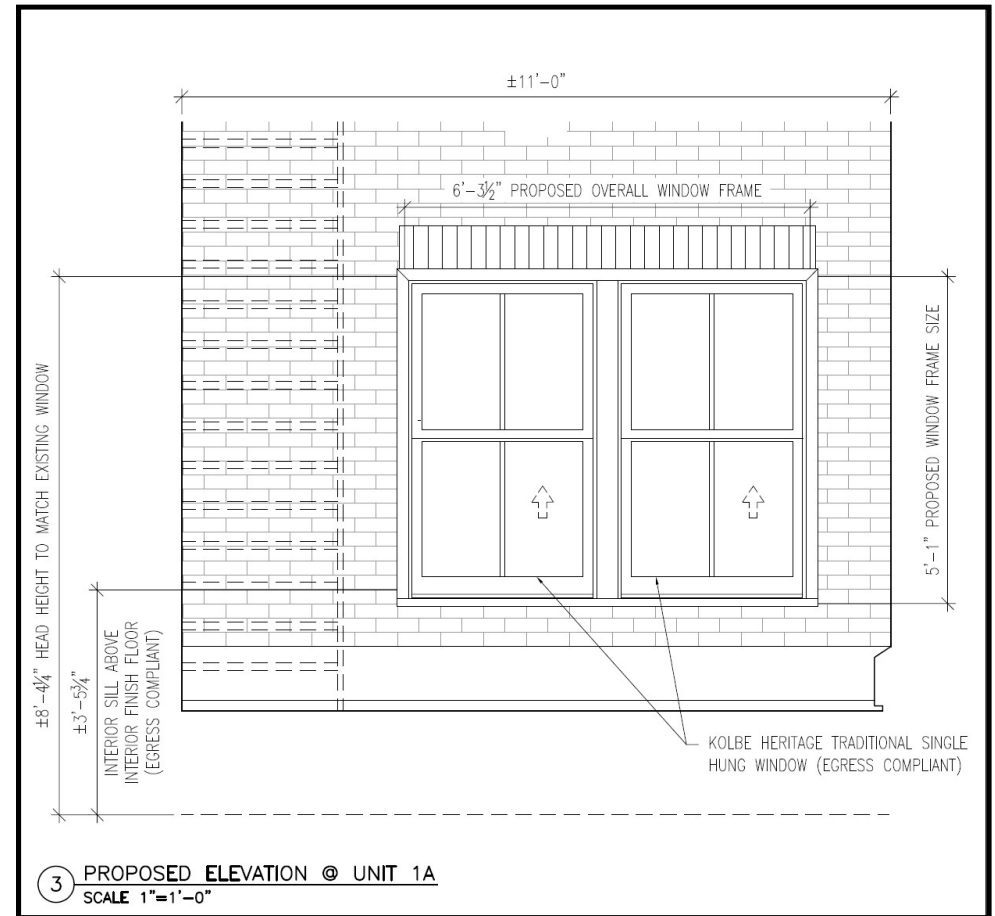
Contractor: Sanford Custom Builders

See application for all contact information

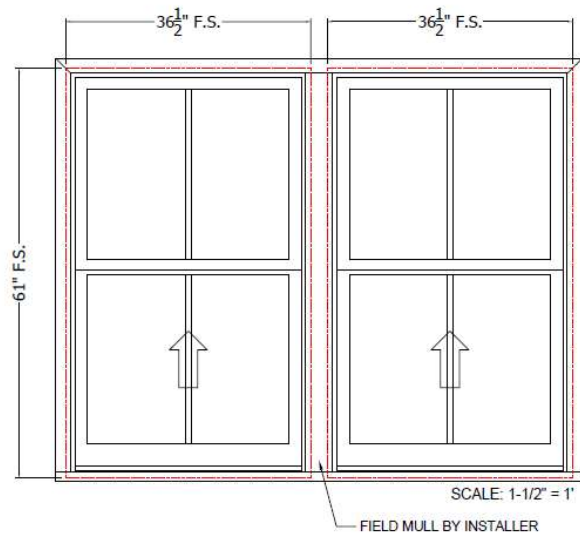
Description of Work

- Scope:
 - Replace two windows in unit 1A that face the ally behind the building
 - Windows overlook a low roof covered in building mechanical equipment
 - Currently these windows are NOT egress compliant, single hung wood construction with single pane non “Low-E” glass and an SDL pattern of two wide by one high
- Proposal
 - Maintain the existing head height and width of the masonry opening while lowering the sill by roughly 7” to achieve EGRESS compliance
 - Proposed Kolbe Heritage windows will maintain the single hung style, match the SDL pattern of two wide by one high, match the non “Low-E” glass and the sill/ casing will match the existing black color
 - Proposed Kolbe Heritage windows will be EGRESS compliant

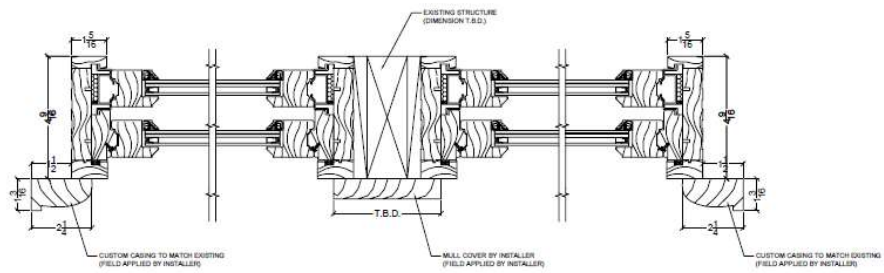
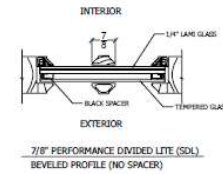
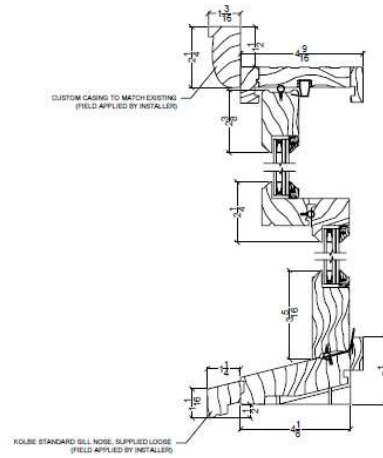
Elevations



Shop Drawing



KOLBE HERITAGE TRADITIONAL SINGLE HUNG
 QTY.: 1 (SHIP AS 2 SINGLES)
 JAMB: 4-9/16"



SCALE: 6" = 1'

Pictures of Current Condition

From Low Roof Looking Toward Building



From Low Roof Looking Toward Ally



From Ally Looking Toward Building



Thank You!