

*Improvements to*  
**CUTILLO  
PLAYGROUND**

*Community Meeting #2*



# MEETING RECORDING



The Boston Parks and Recreation Department will be recording the meeting and posting to our project webpage for those who are unable to attend the Zoom meeting live.

It is possible that participants may also be recording the meeting with their phones cameras or other devices. If you do not wish to be recorded during this meeting, please keep your microphone and camera off.

# VIRTUAL MEETING ETIQUETTE

We want to ensure this conversation is a pleasant experience for all and that all community members/ stakeholders are comfortable sharing their comments, questions and feedback.

Please be respectful and mindful of each other's time when asking questions/ providing comments, so that all attendees are able to participate in the meeting.

Keep questions/ comments project-specific and not personal to yield solution-driven discussion.

Please wait until all attendees have had the opportunity to ask a question/ provide a comment before providing additional questions/ comments.

You can always set up a conversation with **Lauren Bryant**, [lauren.bryant@boston.gov](mailto:lauren.bryant@boston.gov) to further discuss the project or process.

# ZOOM TIPS

Here is how you can participate during the question and answer part of the presentation.

## DURING THE PRESENTATION:



### VIA WEB:

Turn video on / off.



To use these non-verbal options click on participants (bottom of screen); these options will pop up in side bar.

## DURING THE Q&A:



### JOINING VIA PHONE?

Use \*9 to raise hand to ask for audio / video permission to ask questions or provide comments.



### VIA WEB:

Chat to ask questions / comments or provide responses to poll questions



Raise hand to ask for audio / video permission to ask questions or provide comments.

# AGENDA

---

1

***PROJECT TEAM INTRODUCTION***

---

2

***PROJECT OVERVIEW***

---

3

***EXISTING CONDITIONS***

---

4

***PRESENTATION***

---

5

***LISTENING & DISCUSSION***

---

6

***CLOSING REMARKS & NEXT STEPS***

---

# ***PROJECT TEAM***

---

## ***Lauren Bryant***

Project Manager

[Lauren.Bryant@boston.gov](mailto:Lauren.Bryant@boston.gov) or 617-961-3019

## ***Christine Brandao***

Outreach Coordinator, External Affairs

[Christine.Brandao@boston.gov](mailto:Christine.Brandao@boston.gov) or 617-961-3006

## ***Stantec Planning & Landscape Architecture***

Kevin Beuttell, Project Manager

Adam Fearing, Project Landscape Designer

Jess Schoendorf, Landscape Designer

## ***John Romano***

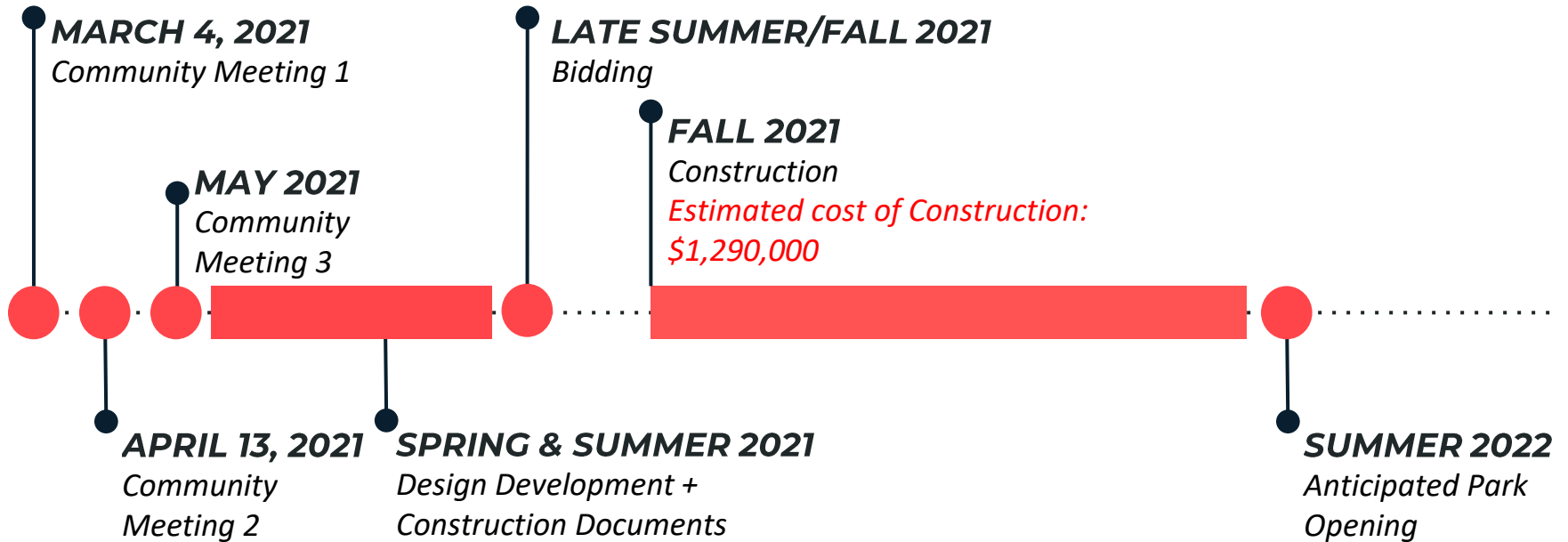
Office of Neighborhood Services

[John.Romano@boston.gov](mailto:John.Romano@boston.gov)



# PROJECT SCHEDULE & FUNDING

---





LOCATION

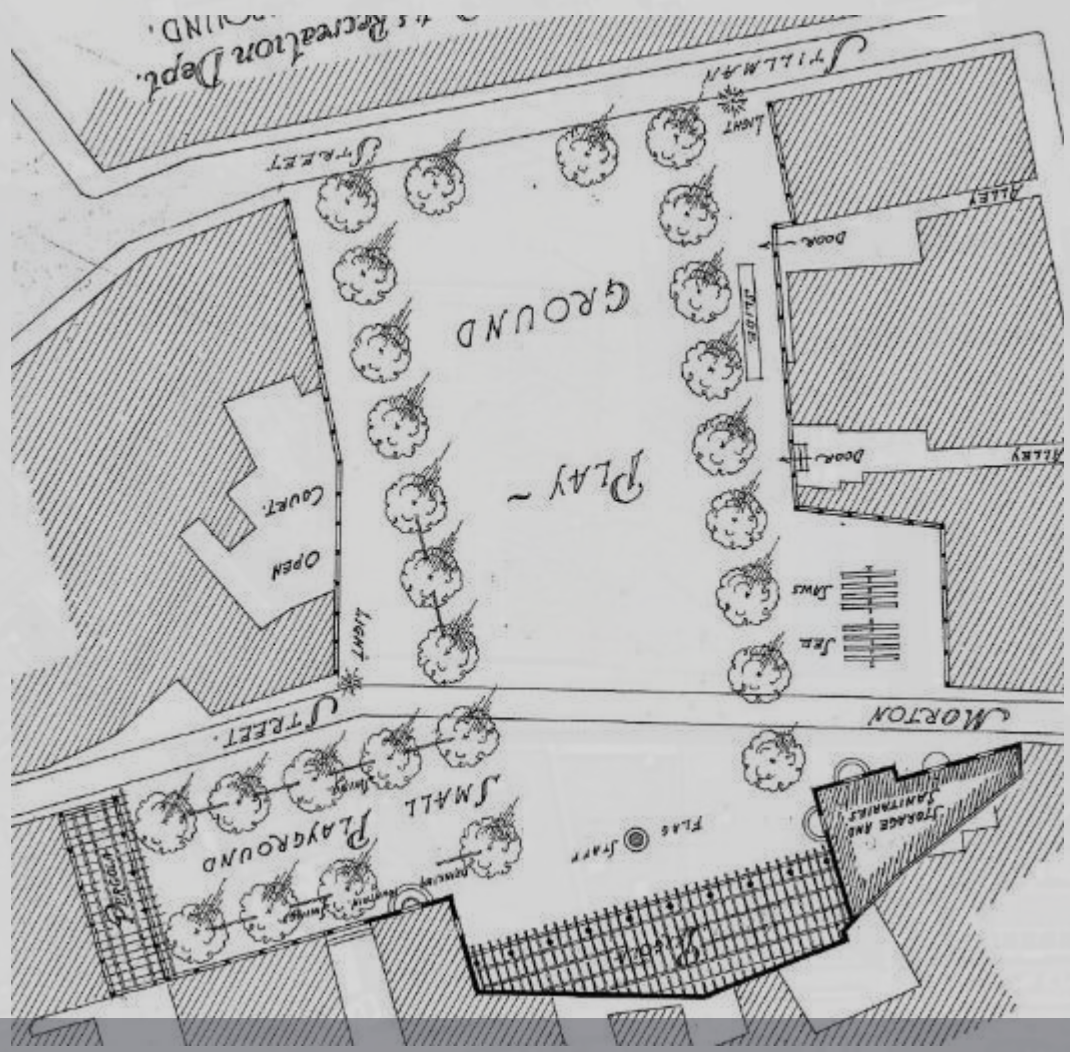




LOCATION



HISTORY: TODAY





AUGUST 31 1923 NY 6190





TODAY



EXISTING CONDITIONS



12,300 SF



PROGRAMMED SPACE  
7,660 SF – 62%




BASKETBALL  
COURT



PLAY  
EQUIP.



SWINGS

An aerial photograph of a city block with a large, irregularly shaped area highlighted in orange. The highlighted area contains a paved court with white markings, possibly for basketball or tennis. The surrounding area consists of various buildings, parking lots, and streets. The text 'PASSIVE' SPACE 4630 SF - 38%' is overlaid on the highlighted area.

'PASSIVE' SPACE  
4630 SF - 38%

- Park
- Playground 2-5
- Playground 5-12
- Basketball Court
- Dog Park



CONSIDERATIONS: Surrounding Programming

- Improve circulation through park
- Focus on 5-12 play
- Consider a dog area
- Maintain seating for older residents
- Improve lighting and visibility at night
- Increase visitors to limit negative behavior
- Keep open visibility
- Improve court quality
- Incorporate adult workout zone
- Preserve existing trees
- Would like to see rethinking of the space, not just a redesign
- Increase greenery, but not block visibility
- Add a water feature
- Concern regarding potential future hotel with shade, use, etc.

## SUMMARY OF INITIAL FEEDBACK



save all existing trees

establish tree zones  
ensures success of trees

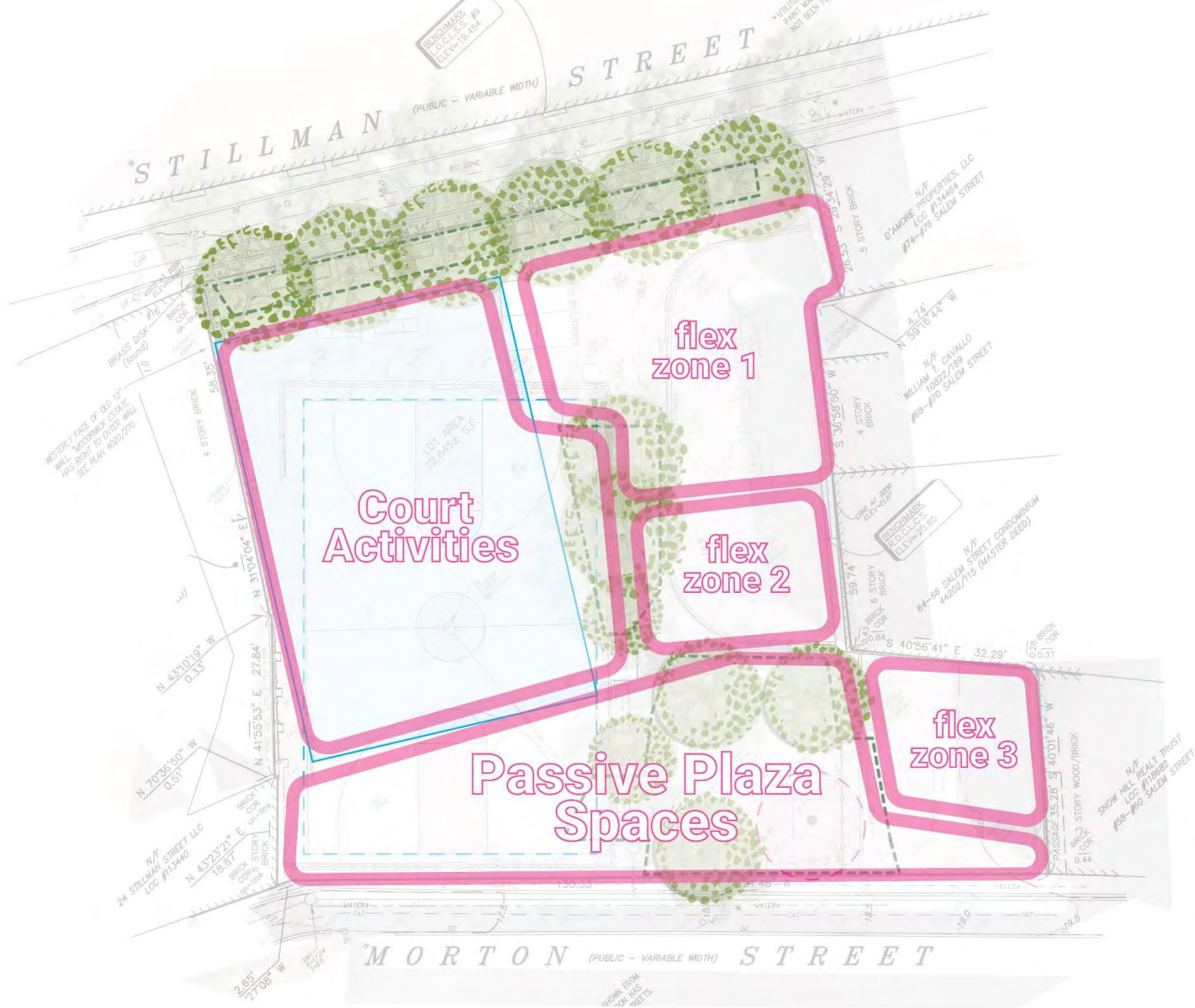
save all existing trees

establish tree zones  
ensures success of trees

shift court to open entry at Morton St.  
court location saves existing trees

remove ginkgo tree  
produces strongsmelling fruit





CREATING A FRAMEWORK FOR PARK LAYOUT







CONCEPT 1: FULL COURT WITH MAXIMUM PLAY







CONCEPT 1: FULL COURT WITH MAXIMUM PLAY









CONCEPT 1: FULL COURT WITH MAXIMUM PLAY





CONCEPT 1: FULL COURT WITH MAXIMUM PLAY





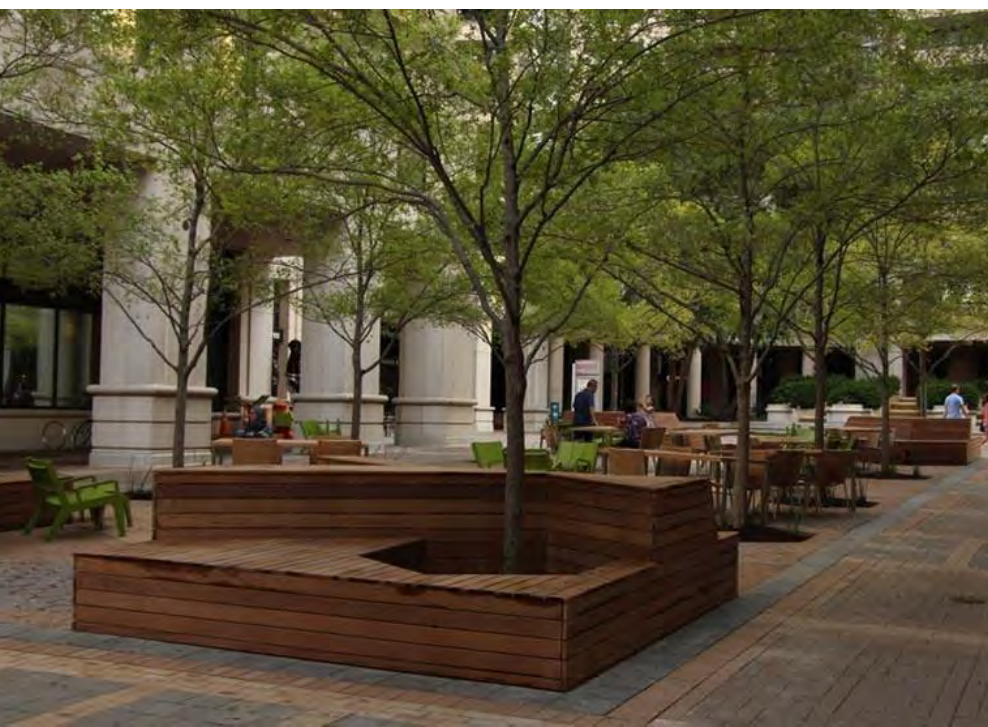


CONCEPT 1: FULL COURT WITH MAXIMUM PLAY



CONCEPT 1: FULL COURT WITH MAXIMUM PLAY











CONCEPT 2: FULL COURT WITH DIVERSE PROGRAM







CONCEPT 2: FULL COURT WITH DIVERSE PROGRAM









CONCEPT 3: HALF COURT WITH PLAY & FITNESS









CONCEPT 3: HALF COURT WITH PLAY & FITNESS





CONCEPT 3: HALF COURT WITH PLAY & FITNESS



CONCEPT 3: HALF COURT WITH PLAY & FITNESS









CONCEPT 4: HALF COURT WITH DIVERSE PROGRAM



CONCEPT 4: HALF COURT WITH DIVERSE PROGRAM



a



b



DO YOU PREFER THE HALF COURT OR THE FULL-SIZE COURT?

C



d



DO YOU PREFER A LARGER PLAY AREA OR SMALLER PLAY SPACES?

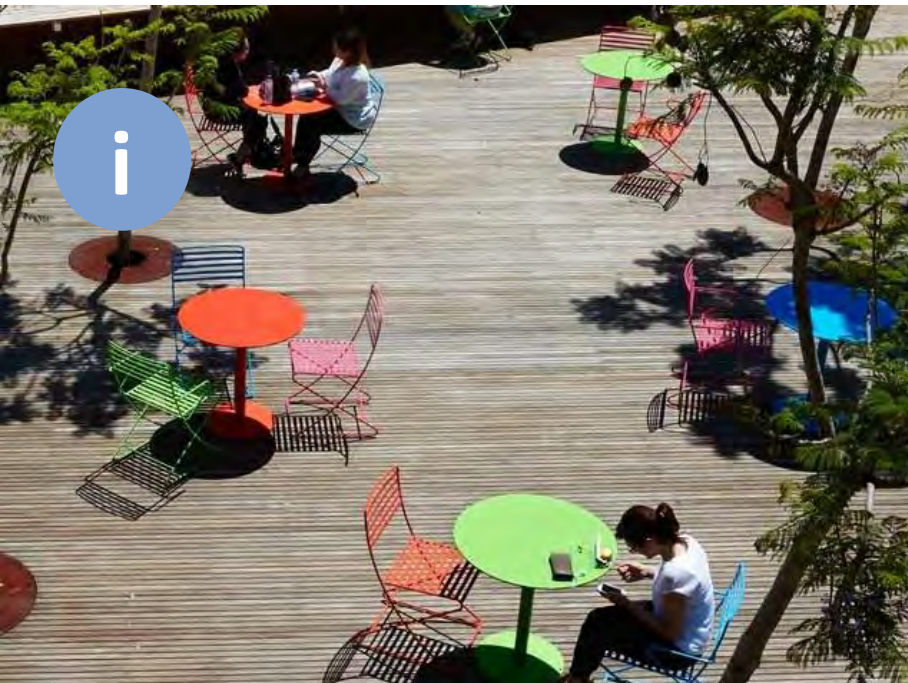
e



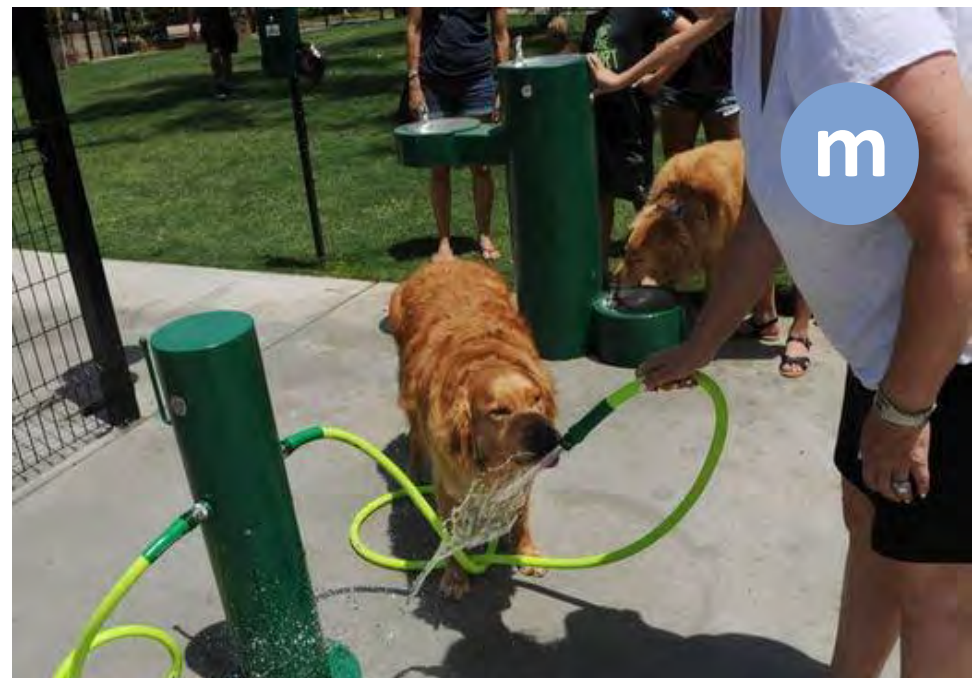
f



**DO YOU PREFER AN OPEN PLAZA AREA OR A PLAZA FILLED WITH SEATING?**



DO YOU PREFER: BENCHES, TABLES AND CHAIRS OR PLATFORM SEATING?



**IN ORDER OF IMPORTANCE (MOST TO LEAST) WHAT ELEMENTS ARE IMPORTANT TO YOU?**



# THANK YOU!

Cuttillo Community Meeting #3: **MAY, 2021**

Cuttillo Park Website: <https://www.boston.gov/departments/parks-and-recreation/improvements-cuttillo-park>

For questions, maintenance requests or concerns regarding any of our parks contact 311

