

# *Improvements to* **RYAN PLAYGROUND**



Copley Wolff Design Group  
Landscape Architects & Planners



# How to use Zoom Webinar

*Please note during this presentation, attendees can see the presenters but we can't see you. Here is how you can participate during the question and answer part of the presentation.*

**Joining via Phone?  
(dial)**  
\*9 to raise hand  
\*6 to unmute/mute

## Joining via web (i.e computer, tablet, etc?)



Use to raise your hand during Q&A

Click here to enter your questions throughout presentation

- 1** PROJECT TEAM INTRODUCTION
- 2** PROJECT OVERVIEW
- 3** OVERVIEW OF PUBLIC ENGAGEMENT
  - Existing Conditions Summary
  - Previous Concepts
  - Public Input
- 4** PRESENTATION OF PREFERRED DESIGN
  - Preferred Site Plan
  - Play Element Options
  - Group Discussion
- 5** CLOSING REMARKS + NEXT STEPS



**B CHATFIELD**

Project Manager  
abigail.chatfield@boston.gov, 617-504-7709

**CHRISTINE BRANDAO**

Outreach Coordinator  
christine.brandao@boston.gov, 617-961-3006

**CHRISTINE WILSON + AARON KRAEMER**

Landscape Architects  
Copley Wolff Design Group

**PATRICK FANDEL**

Office of Neighborhood Services  
Patrick.Fandel@boston.gov, 617-635-4819

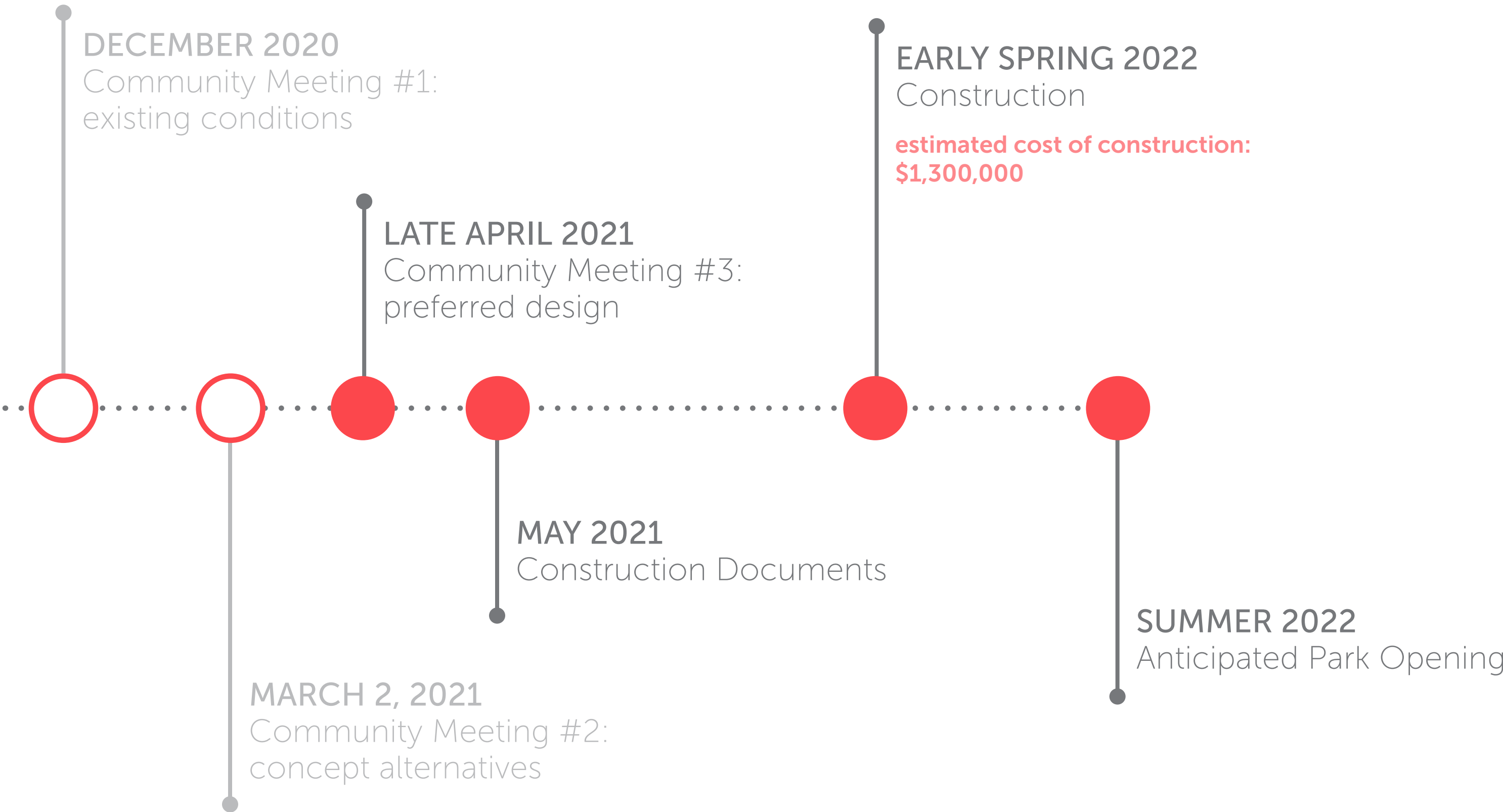




# PROJECT OVERVIEW



# PROJECT SCHEDULING + FUNDING









# OVERVIEW OF PUBLIC ENGAGEMENT

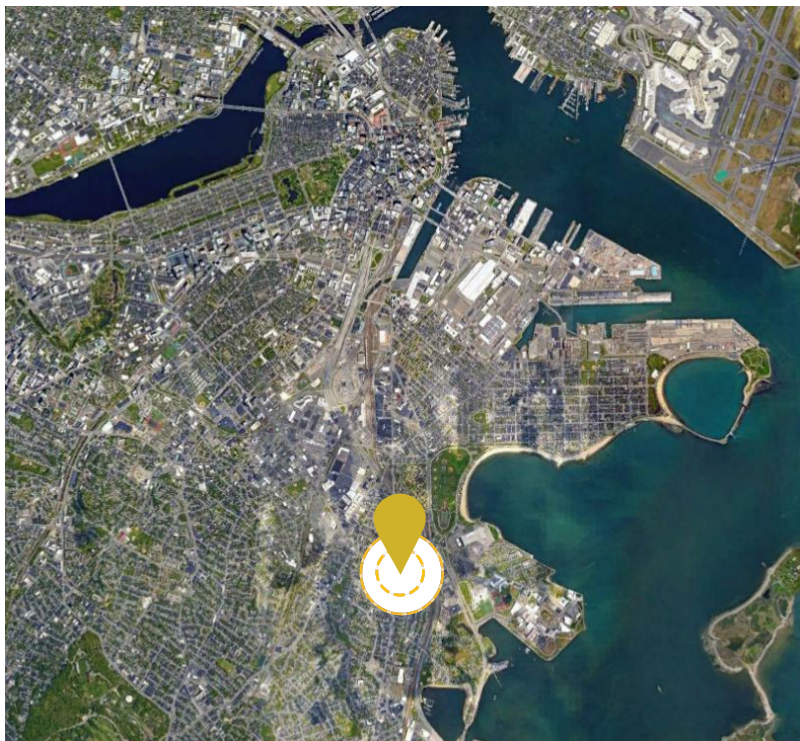
*Existing Conditions Summary*

*Previous Concepts*

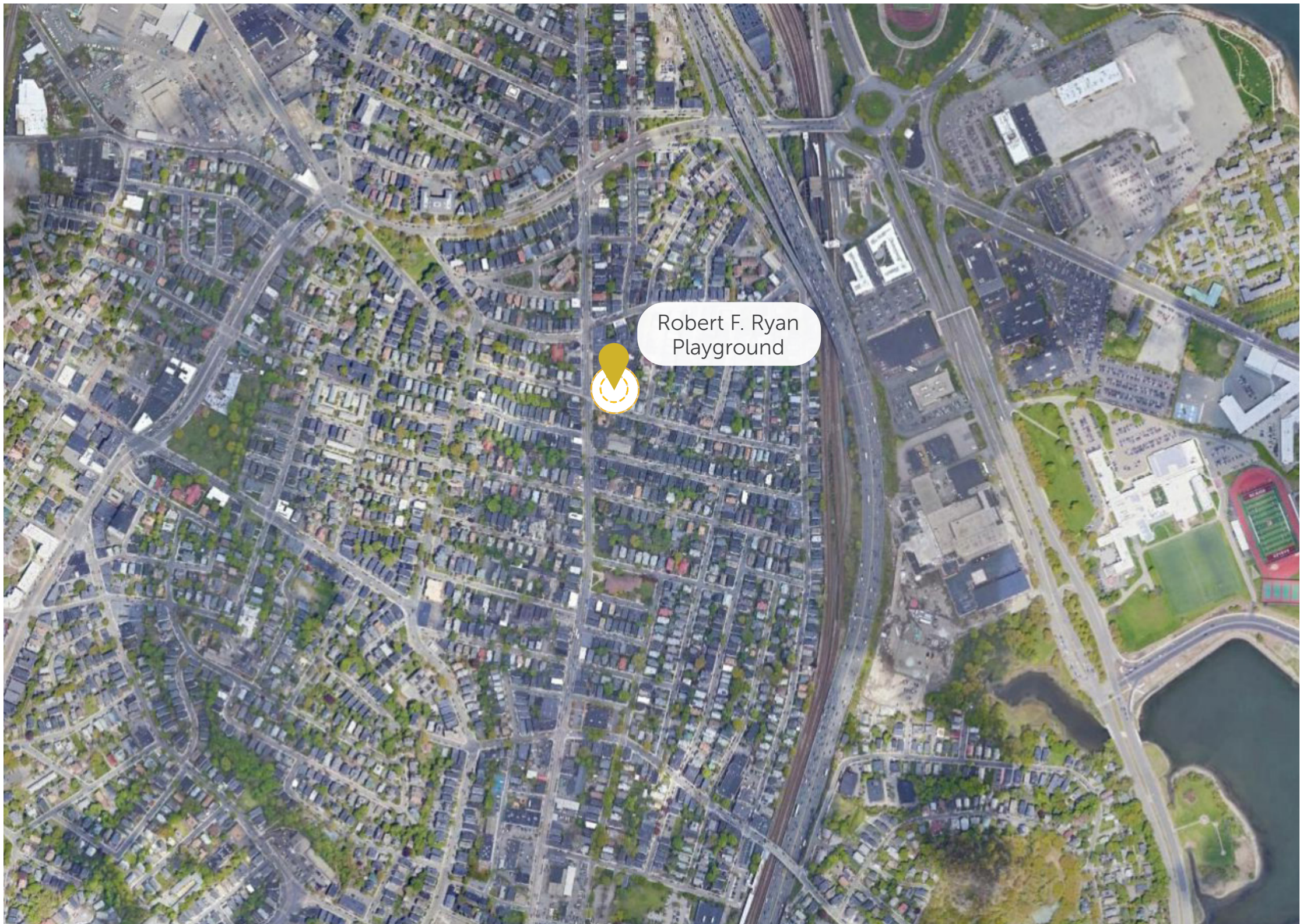
*Community Input*



# SITE LOCATION



CITY-SCALE AERIAL

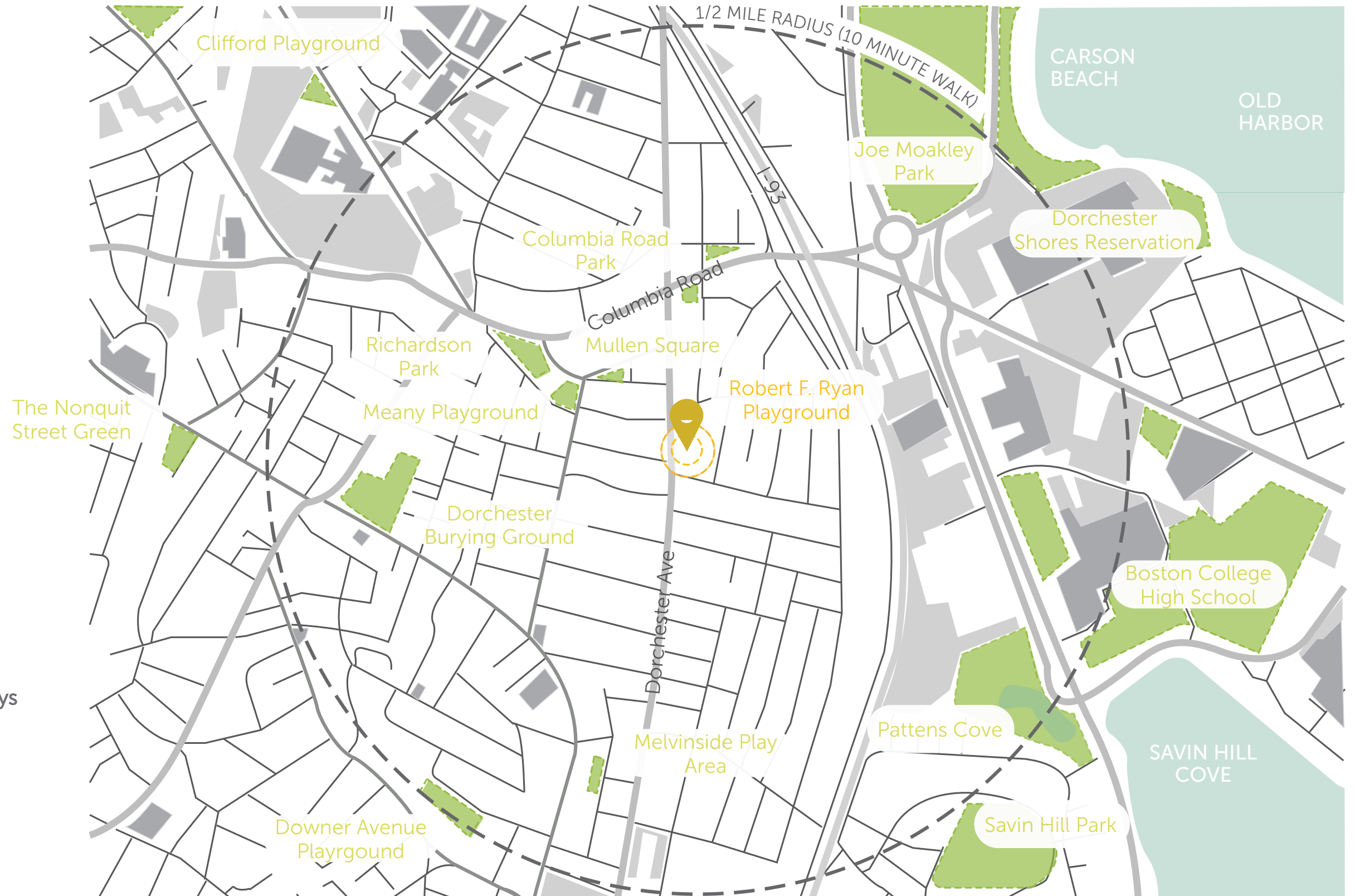


NEIGHBORHOOD-SCALE AERIAL











# NEIGHBORHOOD OPEN SPACE



## LEGEND

-  1/2 Mile Radius
-  Streets, Roads, Highways
-  Significant Locations
-  Bodies of Water
-  Open Space
-  Project Site Location





# SITE CONTEXT





# SITE ANALYSIS



Stairs on Dorchester Avenue

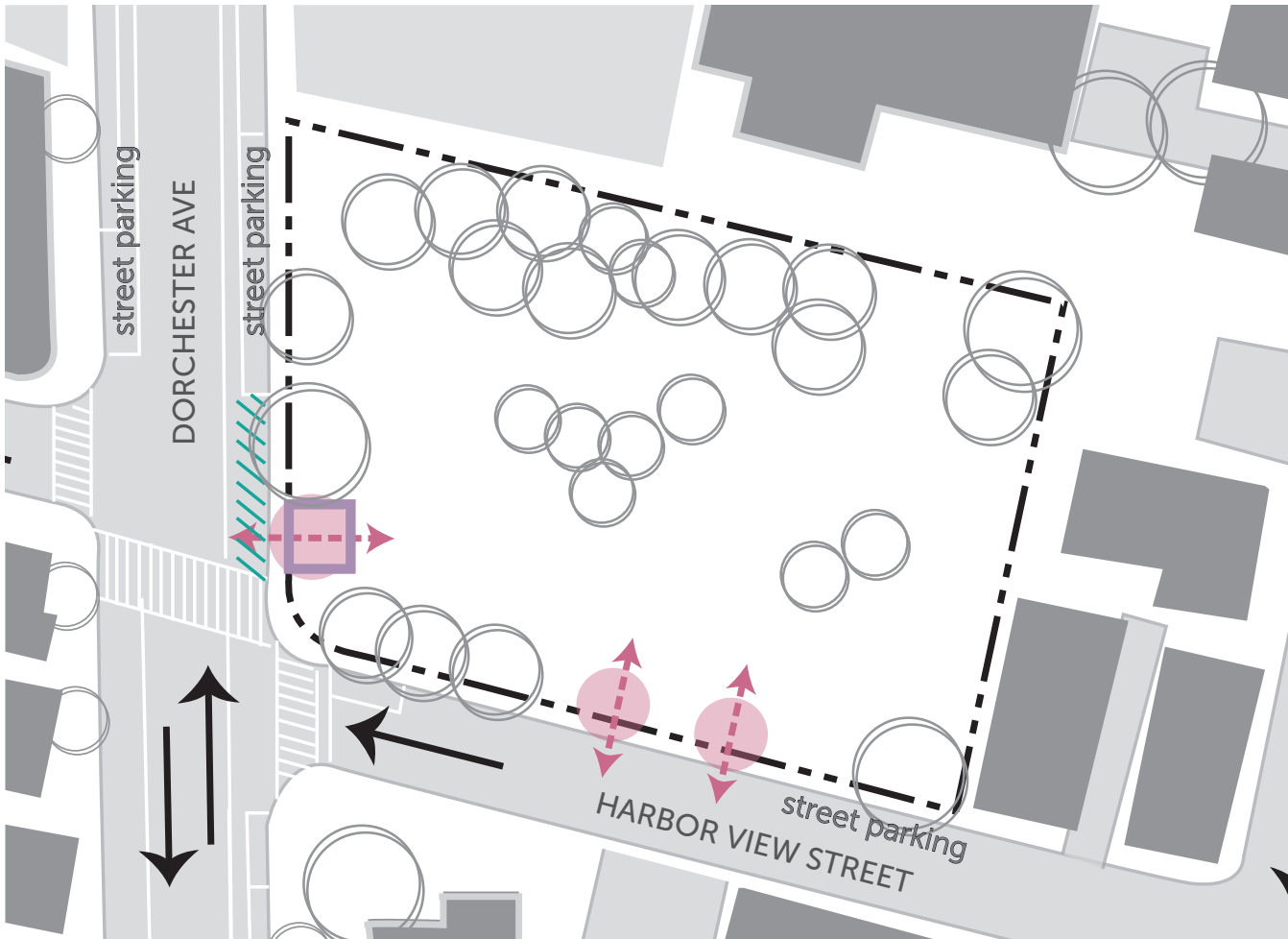


Ramp on Harbor View Street



Stairs on Harbor View Street

## CIRCULATION + ACCESS



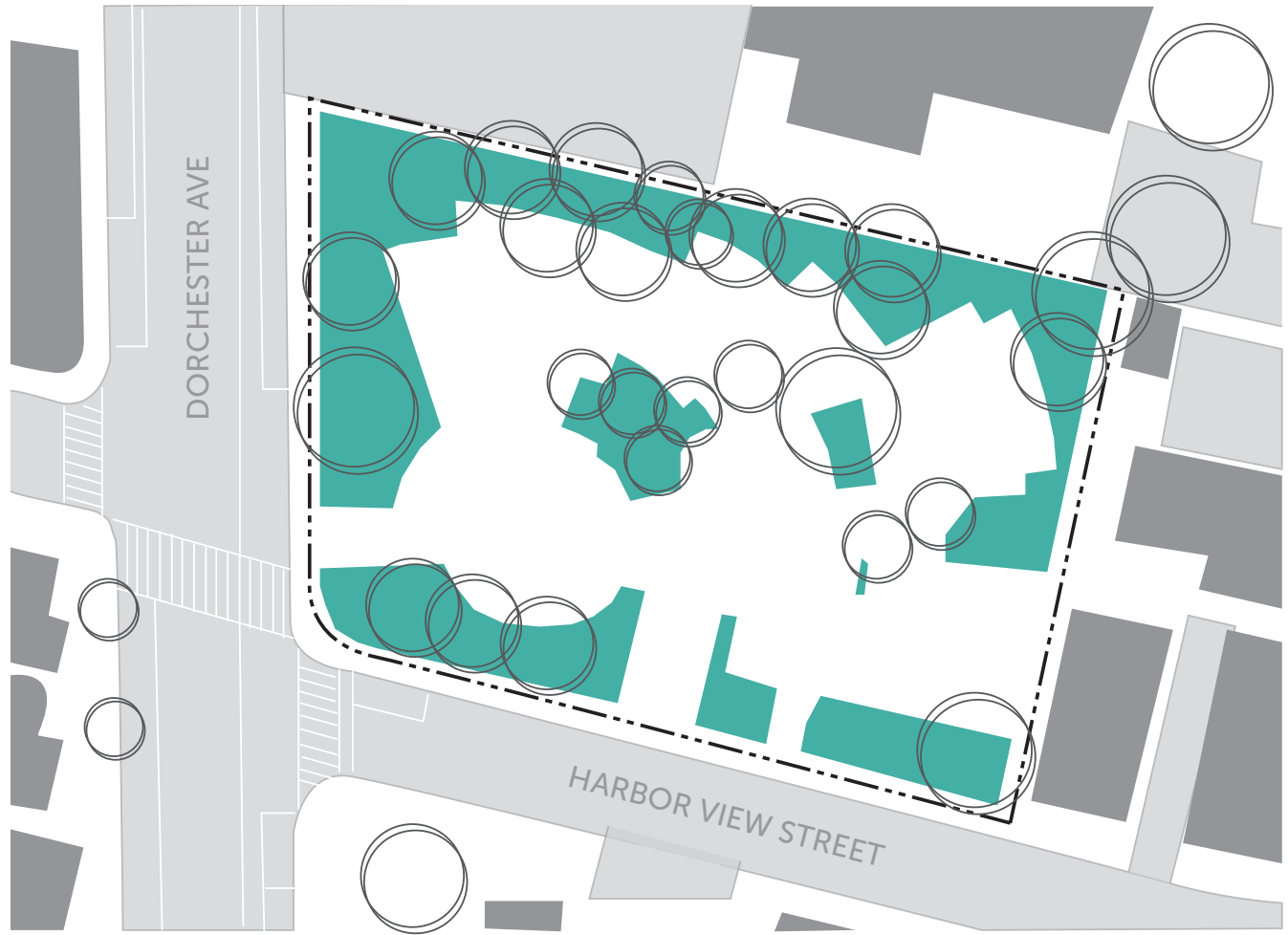
### LEGEND

- Site Boundary
- Residential Buildings
- Pedestrian Park Access
- Surrounding Tree Canopy
- Blue Bike Station
- Vehicular Circulation





## PERVIOUS SURFACE

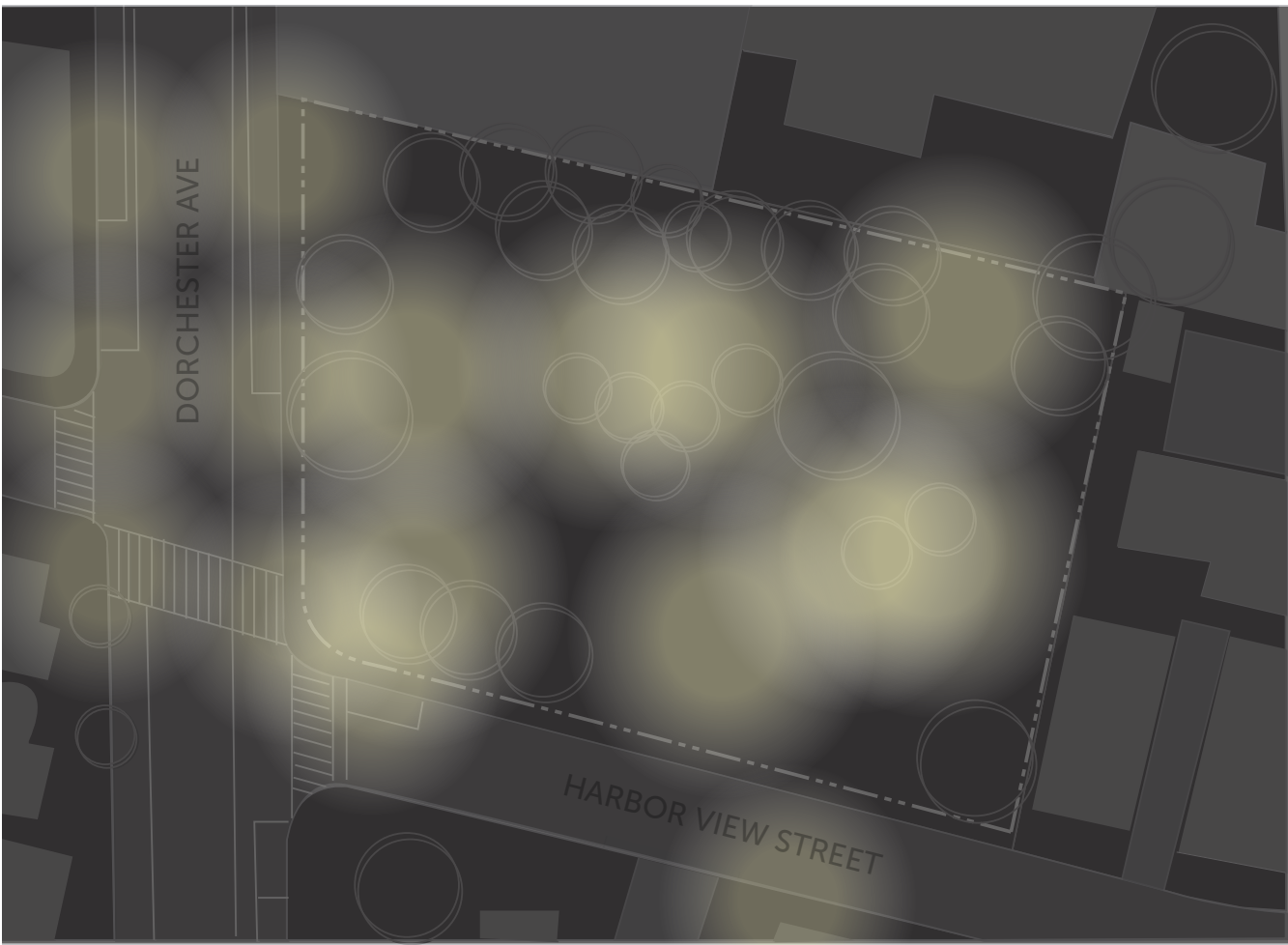


### LEGEND

- Site Boundary
- Residential Buildings
- Surrounding Tree Canopy
- Pervious Surfaces (38.2%)



## SITE LIGHTING



### LEGEND

- Site Boundary
- Residential Buildings
- Surrounding Tree Canopy
- Lighting







Norway Maple on Harbor View Street



Green Ash Trees on Harbor View Street



Norway Maple on Dorchester Avenue

## TREE SUITABILITY FOR PRESERVATION



### LEGEND

-  High Suitability for Tree Preservation
-  Moderate Suitability for Tree Preservation
-  Low Suitability for Tree Preservation



# SITE ANALYSIS



(4) Belt Seat Swings + (2) Bucket Seat Swings



Pavement Games



Drinking Fountain



Flagpole Base Inscription



5-12 Play Structure



Entry Gateway



Site Seating



2-5 Play Structure



Water Play with Art Tiles



Site Art





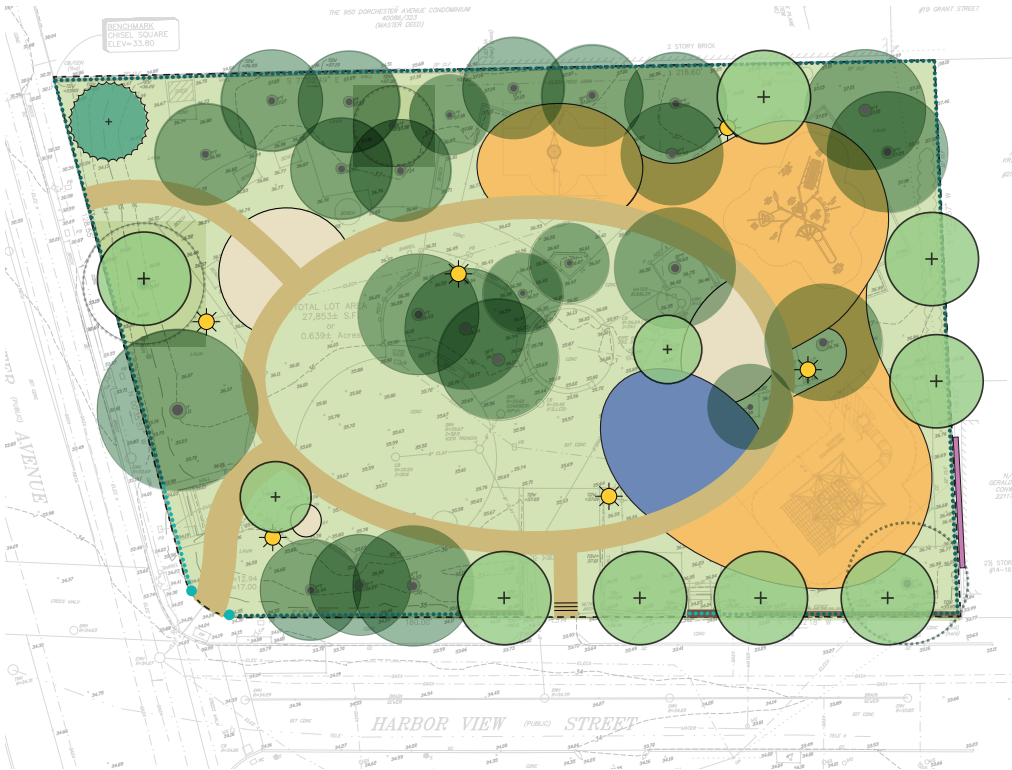
# SITE ANALYSIS





# CONCEPT ALTERNATIVES

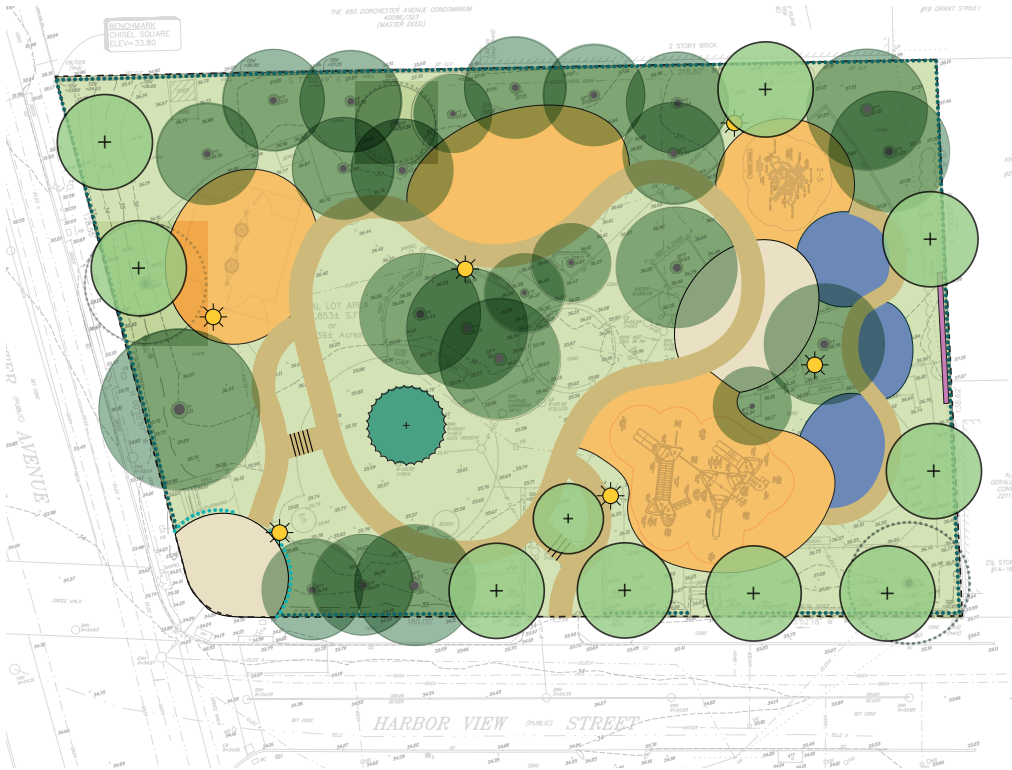
## CONCEPT A: GREAT LAWN



### KEY ATTRIBUTES

- large central lawn with loop path
- new main entry gateway
- three entrances
- connected play areas
- separate seating areas

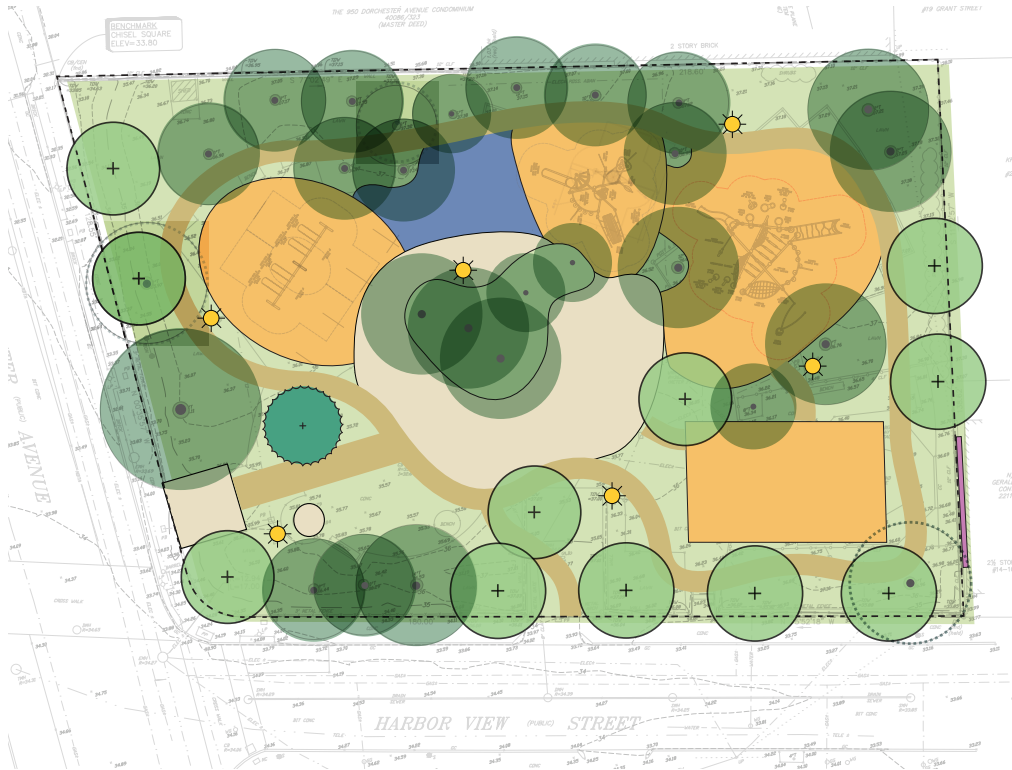
## CONCEPT B: MEANDERING PATHS



### KEY ATTRIBUTES

- meandering central path
- main entry plaza
- smaller splash pads connected with a path
- separated swing area
- skateboard area for older children

## CONCEPT C: PLAY LOOP



### KEY ATTRIBUTES

- meandering perimeter path
- reuses existing entrance gateway
- central plaza with tables
- connected play areas
- half court basketball for older children

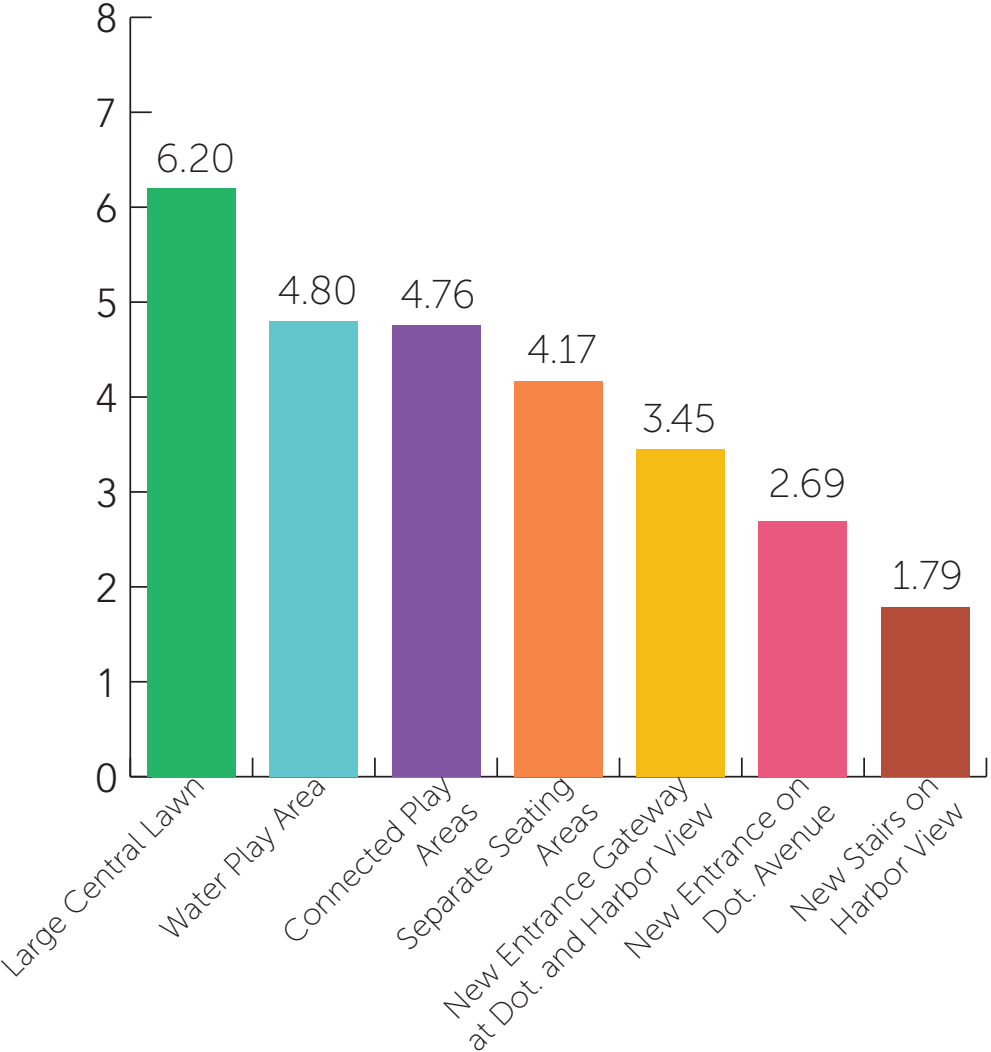


# COMMUNITY INPUT

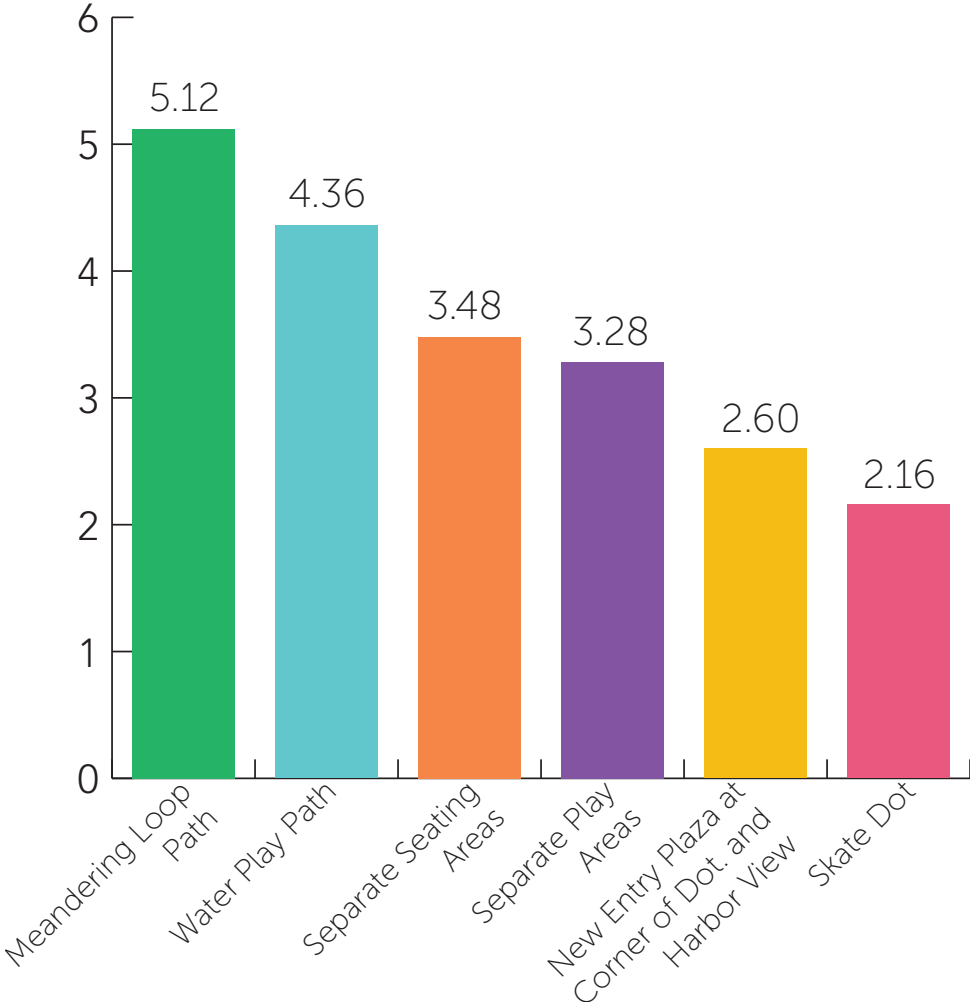
## Question:

Please rank in order of preference elements that are most important to least important.

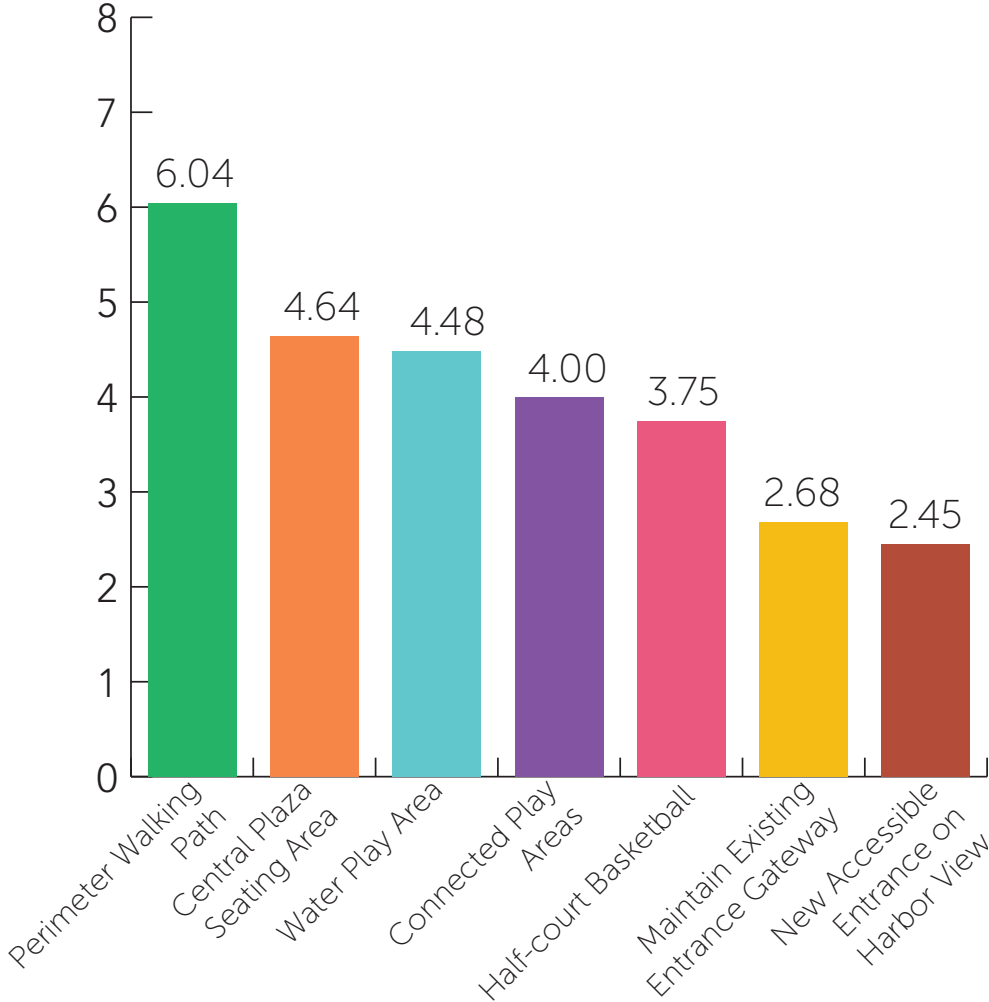
**CONCEPT A:  
GREAT LAWN**



**CONCEPT B:  
MEANDERING PATHS**



**CONCEPT C:  
PLAY LOOP**



\*ranked answers

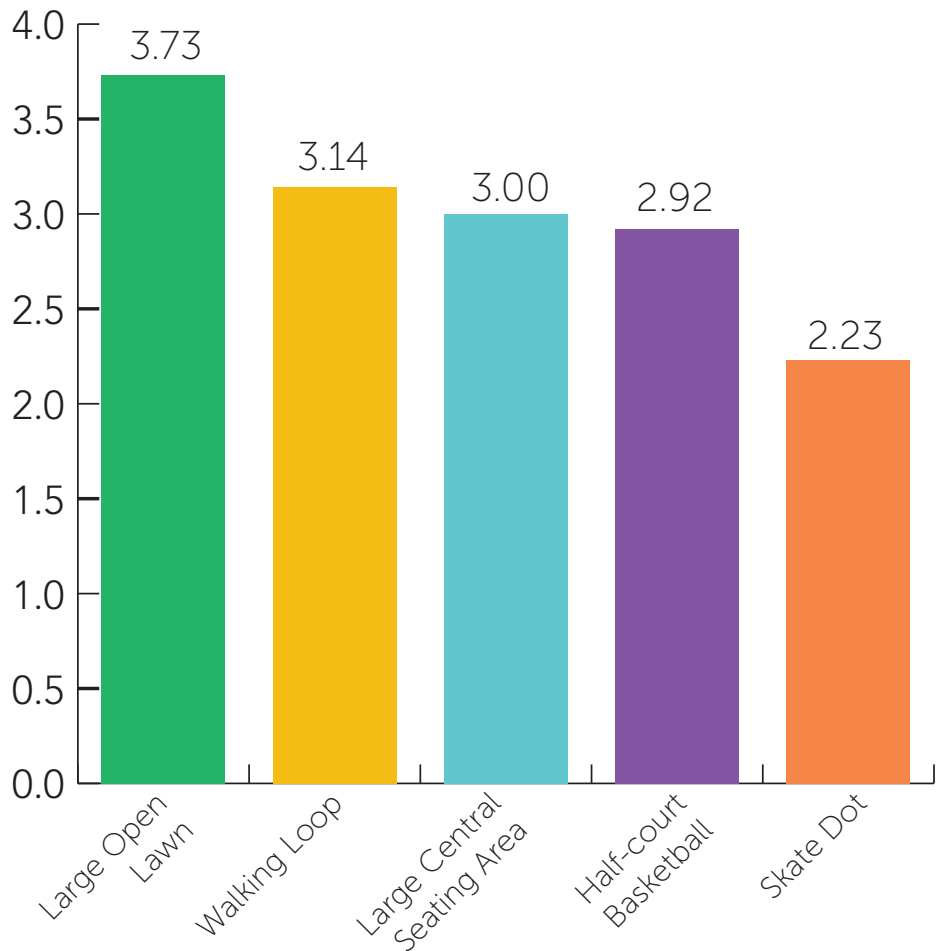




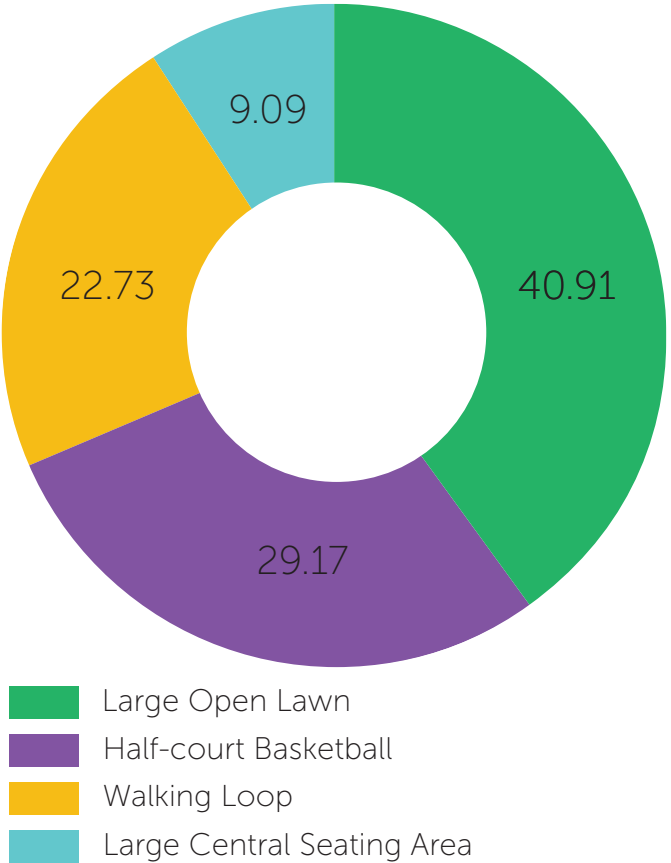
## Survey Question:

Please rank the following in order of preference as to what you would like to see at Ryan Playground.

ranked answers

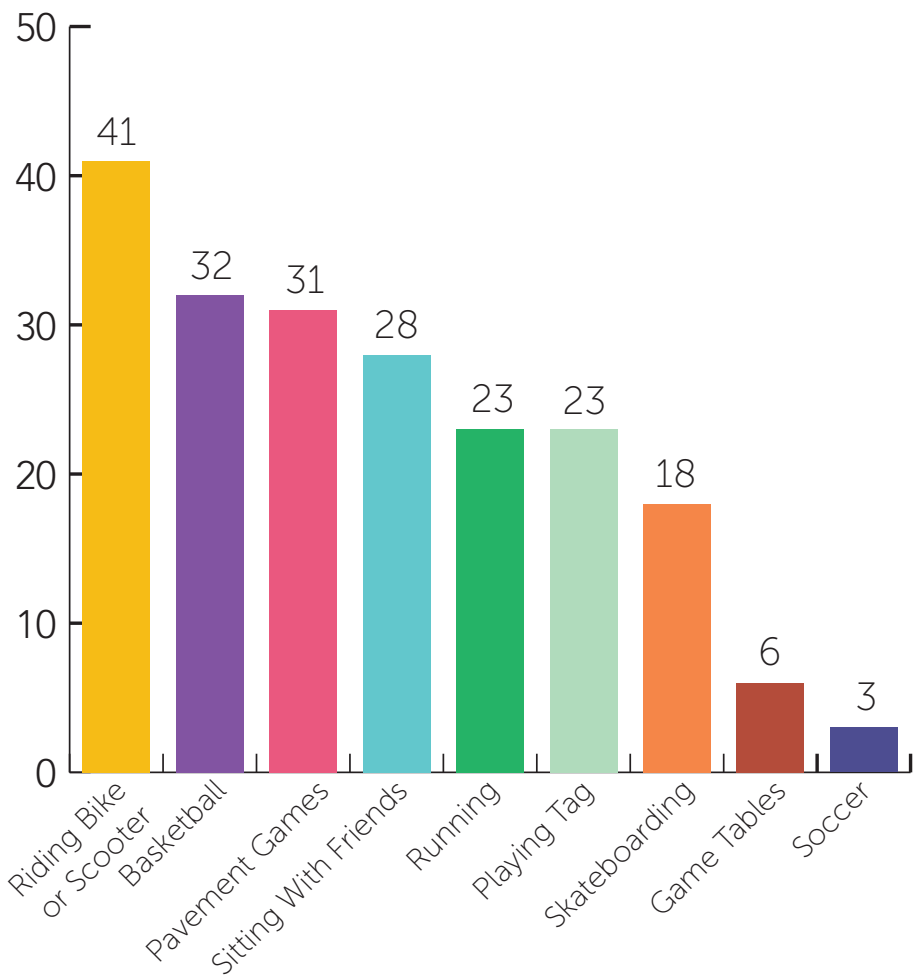


first choice selection



## BCCS 5th Graders:

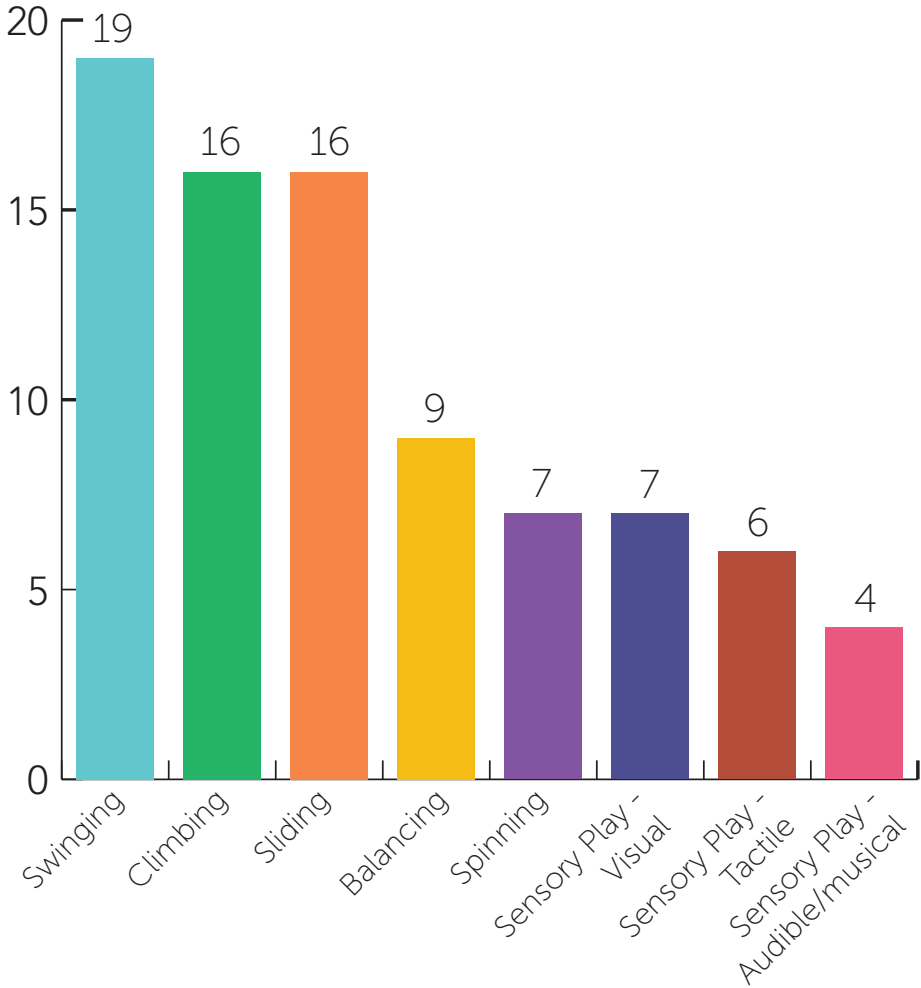
Choose your top 3 activities you enjoy when you're not using play equipment.





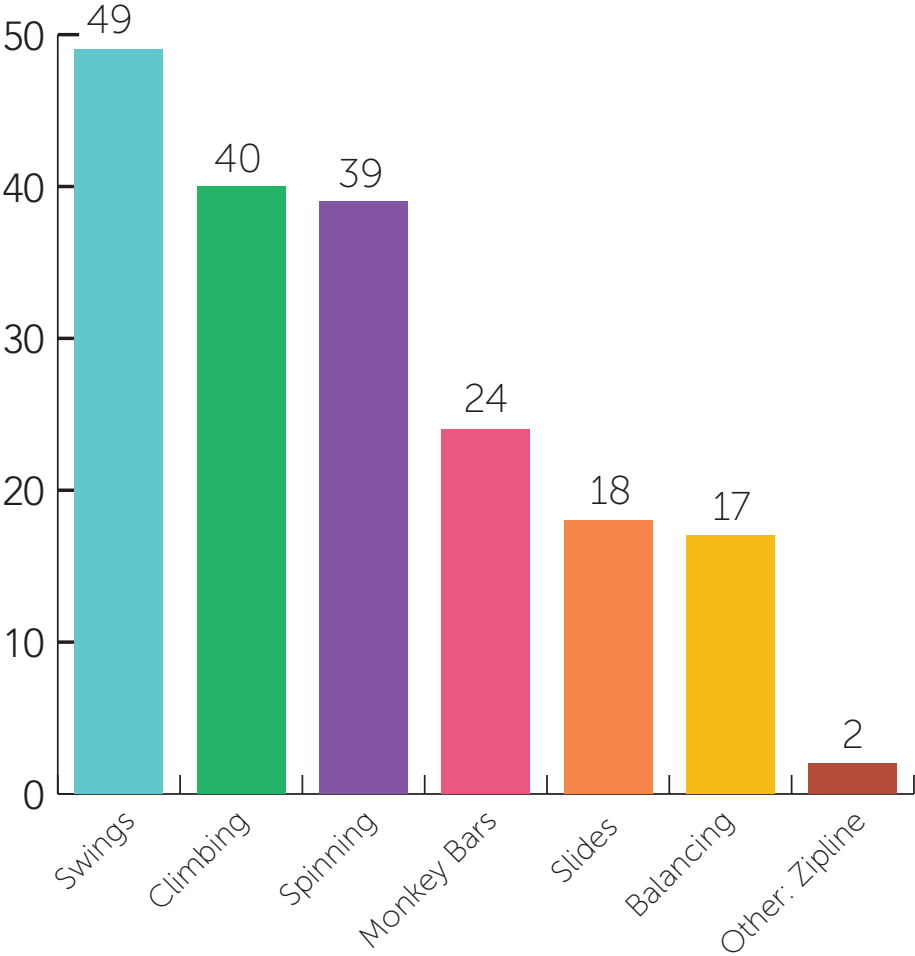
### Survey Question:

Please select the three activity types that are MOST important to you.



### BCCS 5th Graders:

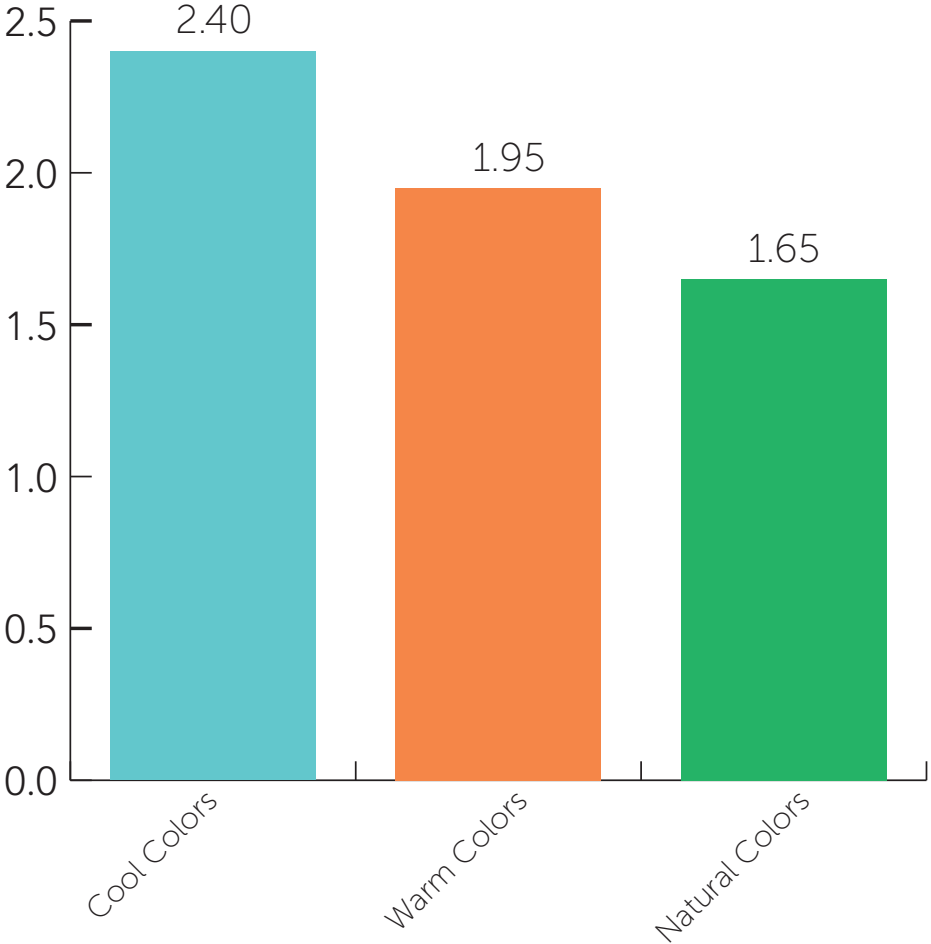
Choose your top 3 kinds of play equipment that you enjoy:





## Survey Question:

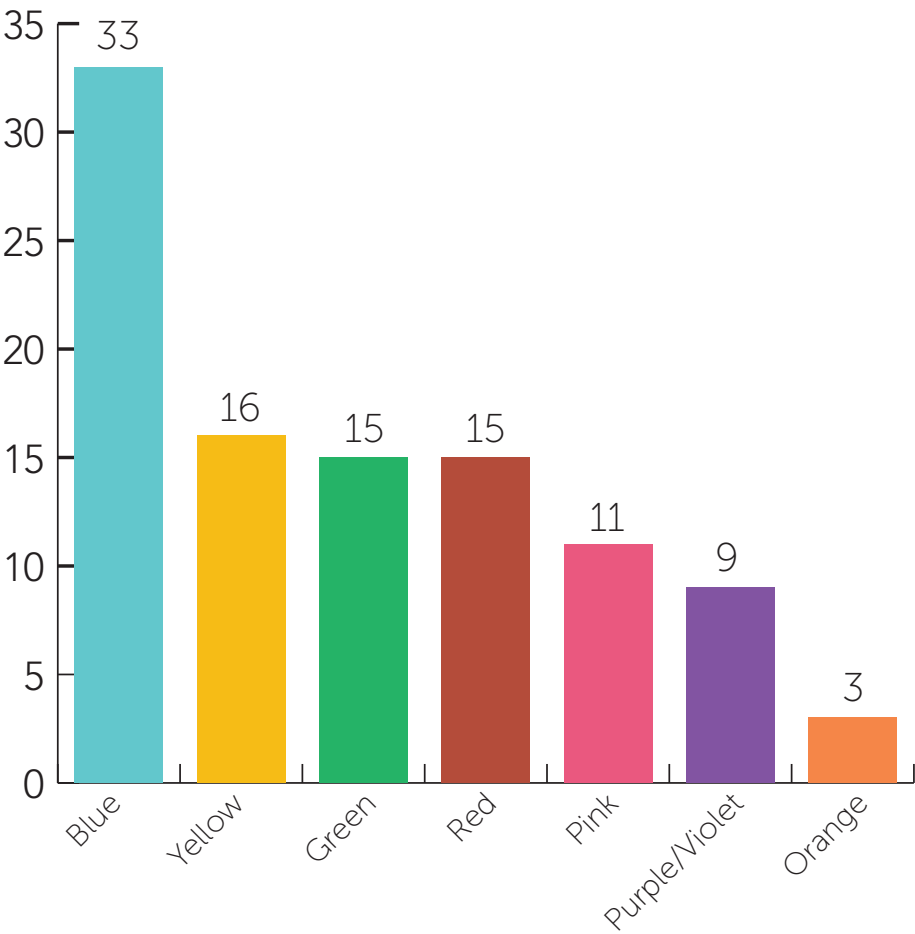
Please rank what color family you would like to see at Ryan Playground?



\*ranked answers

## BCCS 5th Graders:

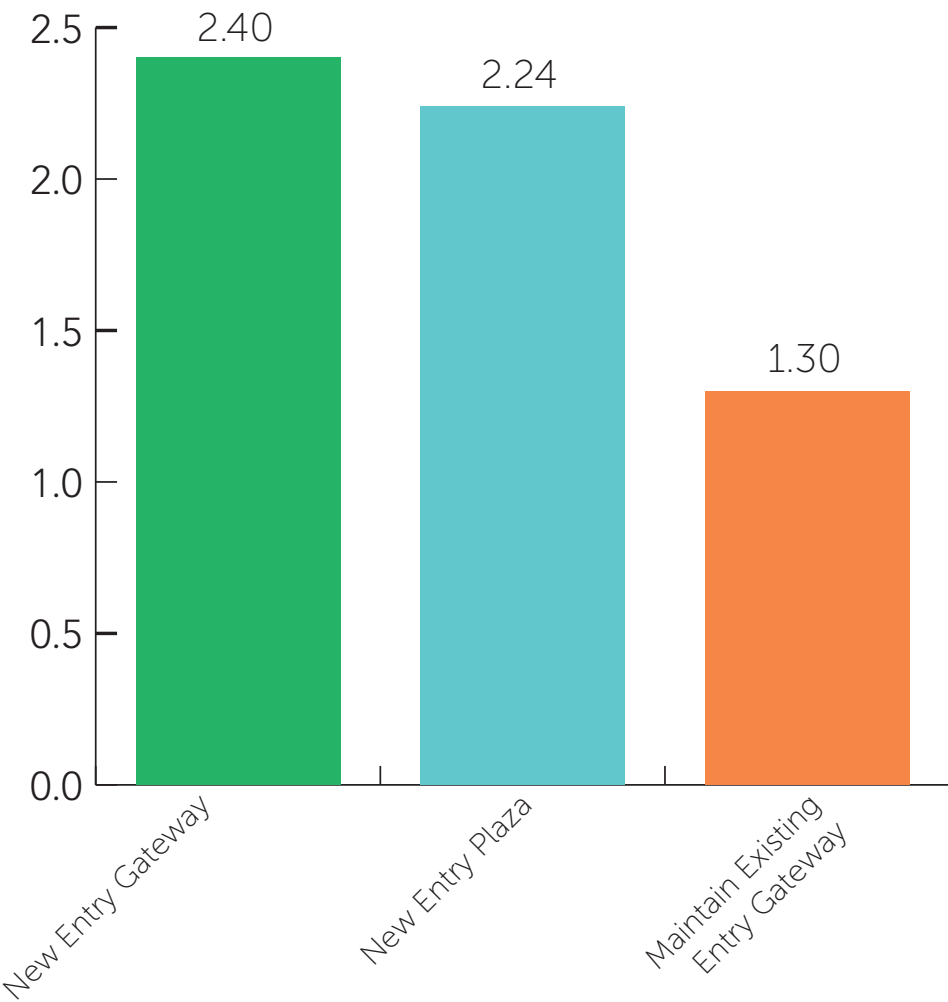
Are there any colors you think we should use?





## Survey Question:

Please rank what type of main entry you would like to see at Ryan Playground?



\*ranked answers



New Entry Gateway



New Entry Plaza



Existing Entry Gateway



Below are a few comments recieved from Survey #2:

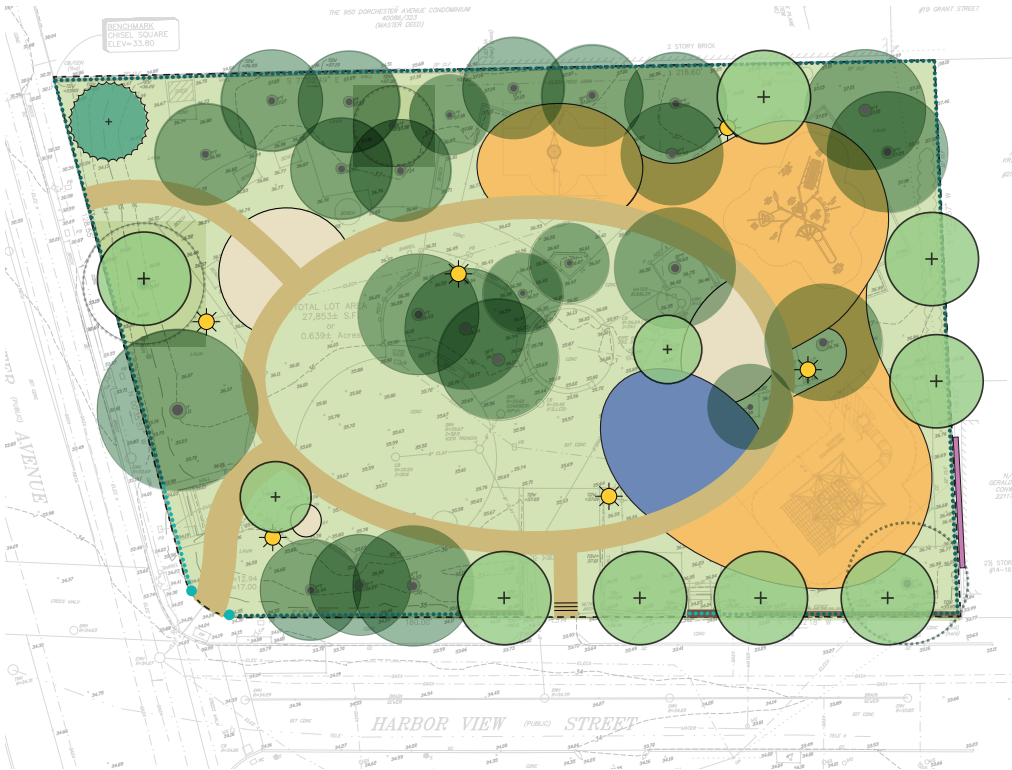
- I love the idea of a basketball court.
- A basketball court should not even be considered.
- Walking loop is a GREAT idea for our neighbors. Kids would love a path for bikes/scooters. We have lots of elderly neighbors who already use the park space for light fitness activities.
- Grass is more important than concrete.
- I think a basketball court is more useful than a skate spot.
- I like the great lawn.





# PREFERRED CONCEPT DEVELOPMENT

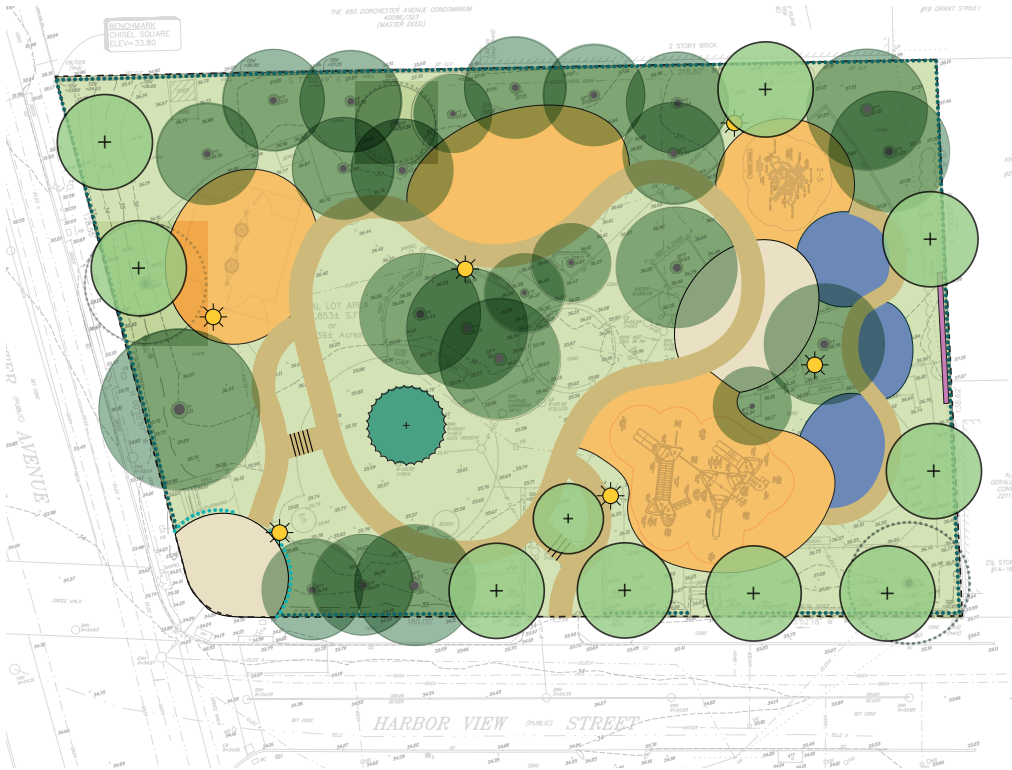
CONCEPT A:  
GREAT LAWN



**KEY ATTRIBUTES**

- large central lawn with loop path
- new main entry gateway
- three entrances
- connected play areas
- separate seating areas

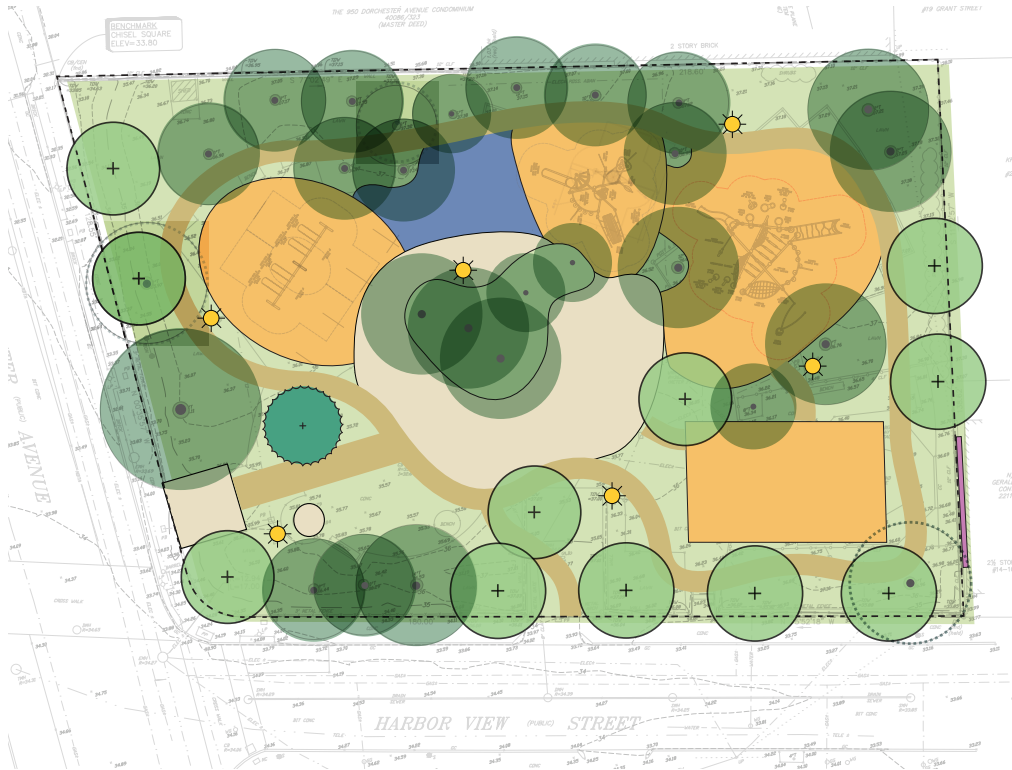
CONCEPT B:  
MEANDERING PATHS



**KEY ATTRIBUTES**

- meandering central path
- main entry plaza
- smaller splash pads connected with a path
- separated swing area
- skateboard area for older children

CONCEPT C:  
PLAY LOOP



**KEY ATTRIBUTES**

- meandering perimeter path
- reuses existing entrance gateway
- central plaza with tables
- connected play areas
- half court basketball for older children



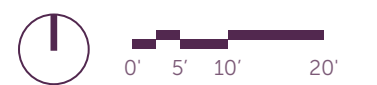
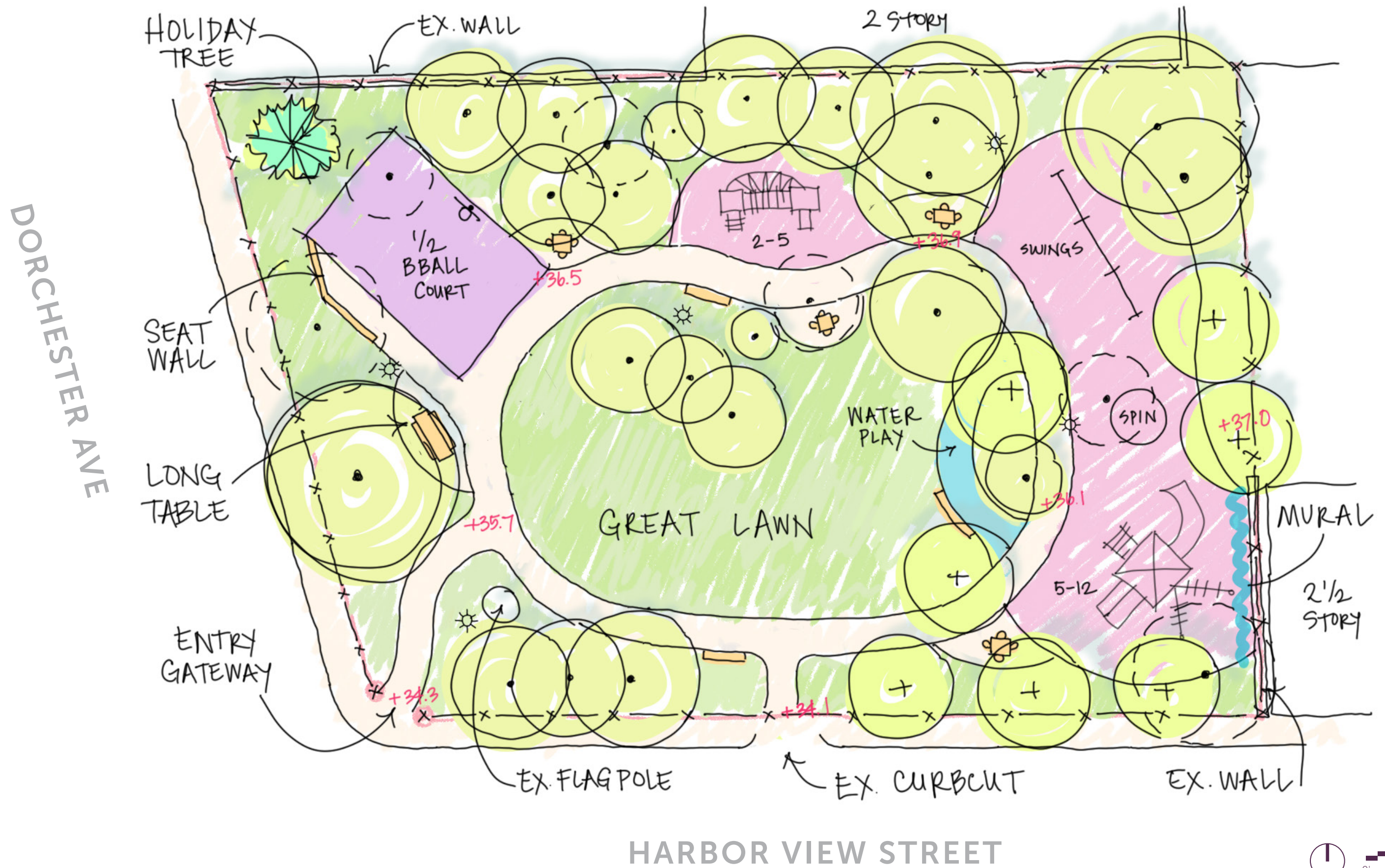


# PRESENTATION OF PREFERRED DESIGN

*Preferred Site Plan  
Play Element Options  
Group Discussion*



# PREFERRED SITE PLAN





# PLAY ELEMENT OPTIONS: CATEGORIES



AGES 2-5 PLAY STRUCTURE



AGES 5-12 PLAY STRUCTURE



STAND ALONE ELEMENT



WATER PLAY



PAVEMENT GRAPHICS

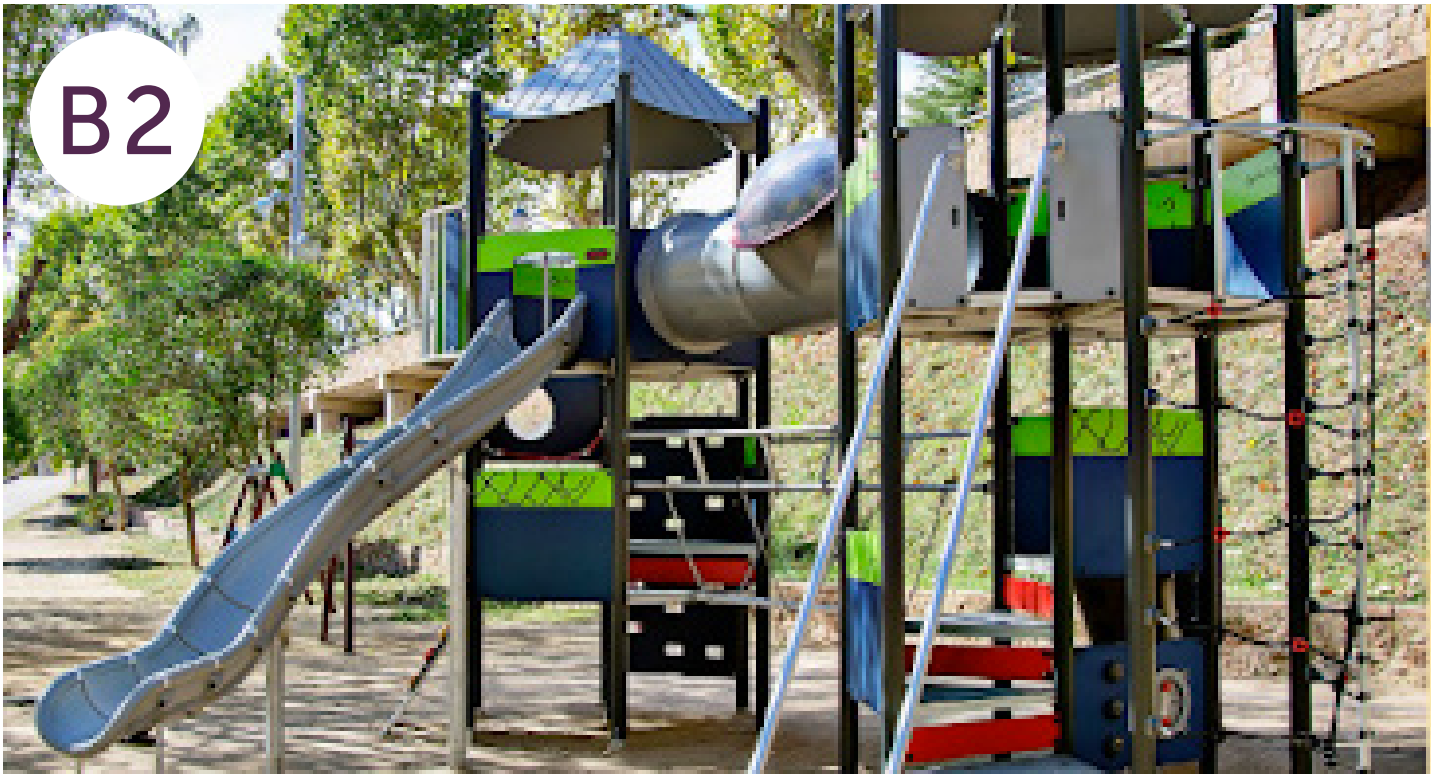


# PLAY ELEMENT OPTIONS: AGES 2-5 STRUCTURE





# PLAY ELEMENT OPTIONS: AGES 5-12 STRUCTURE





PLAY ELEMENT OPTIONS: SPINNING, SWAYING, SWINGING (STAND ALONE)



C1



C2



C3



C4



# PLAY ELEMENT OPTIONS: WATER PLAY COURSE



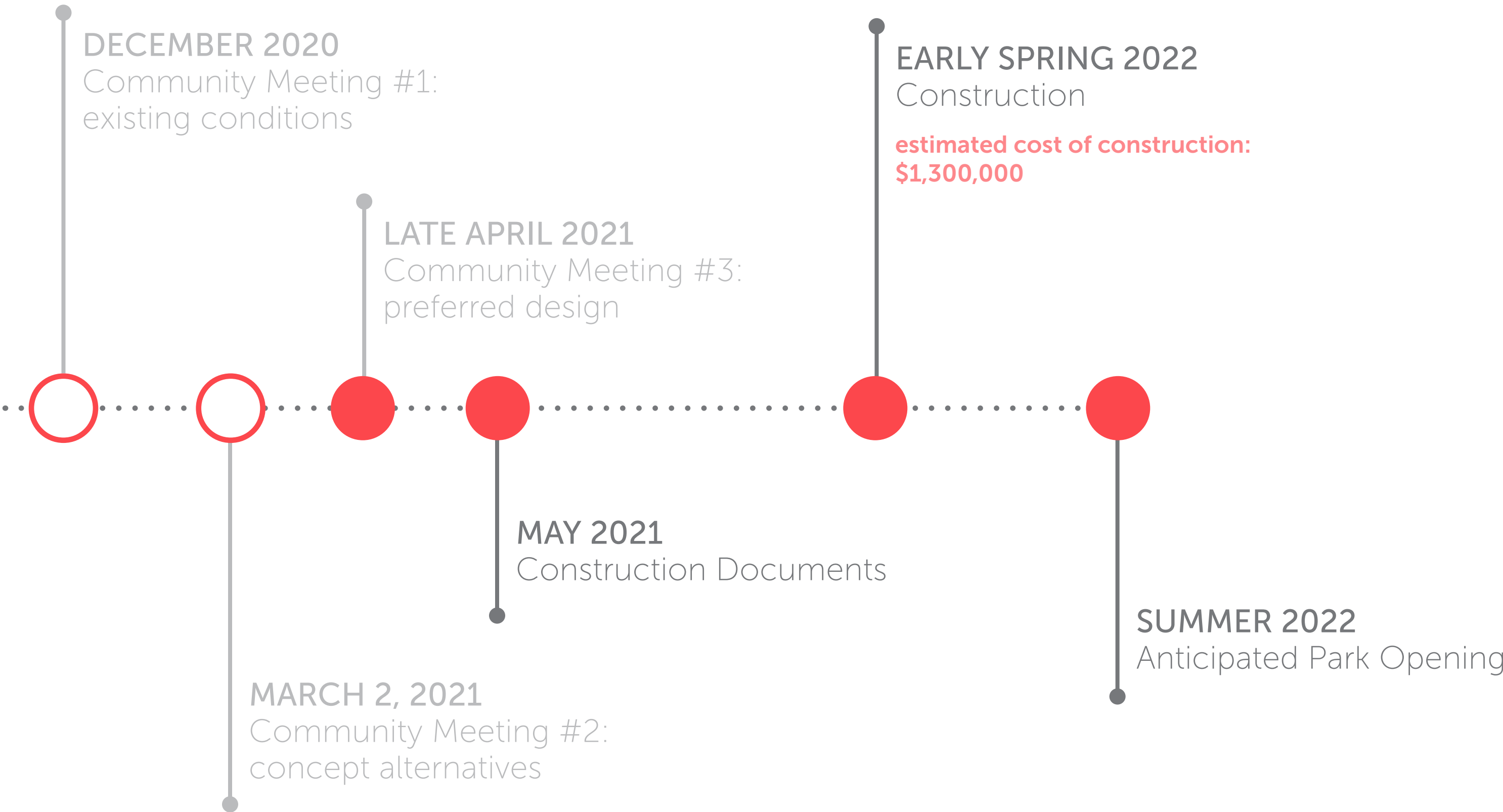


# PLAY ELEMENT OPTIONS: PAVEMENT GRAPHICS





# NEXT STEPS





THANK YOU FOR JOINING!

PLEASE VISIT THE WEBSITE:

[https://www.boston.gov/departments/parks-and-recreation/  
improvements-ryan-playground](https://www.boston.gov/departments/parks-and-recreation/improvements-ryan-playground)



Scan me with your  
phone's camera!

WE LOOK FORWARD TO REBUILDING A PLAYGROUND FOR YOU!