



83 Mt Vernon St,
Boston, MA 02108

Mt Vernon St

Mt Vernon St
48a

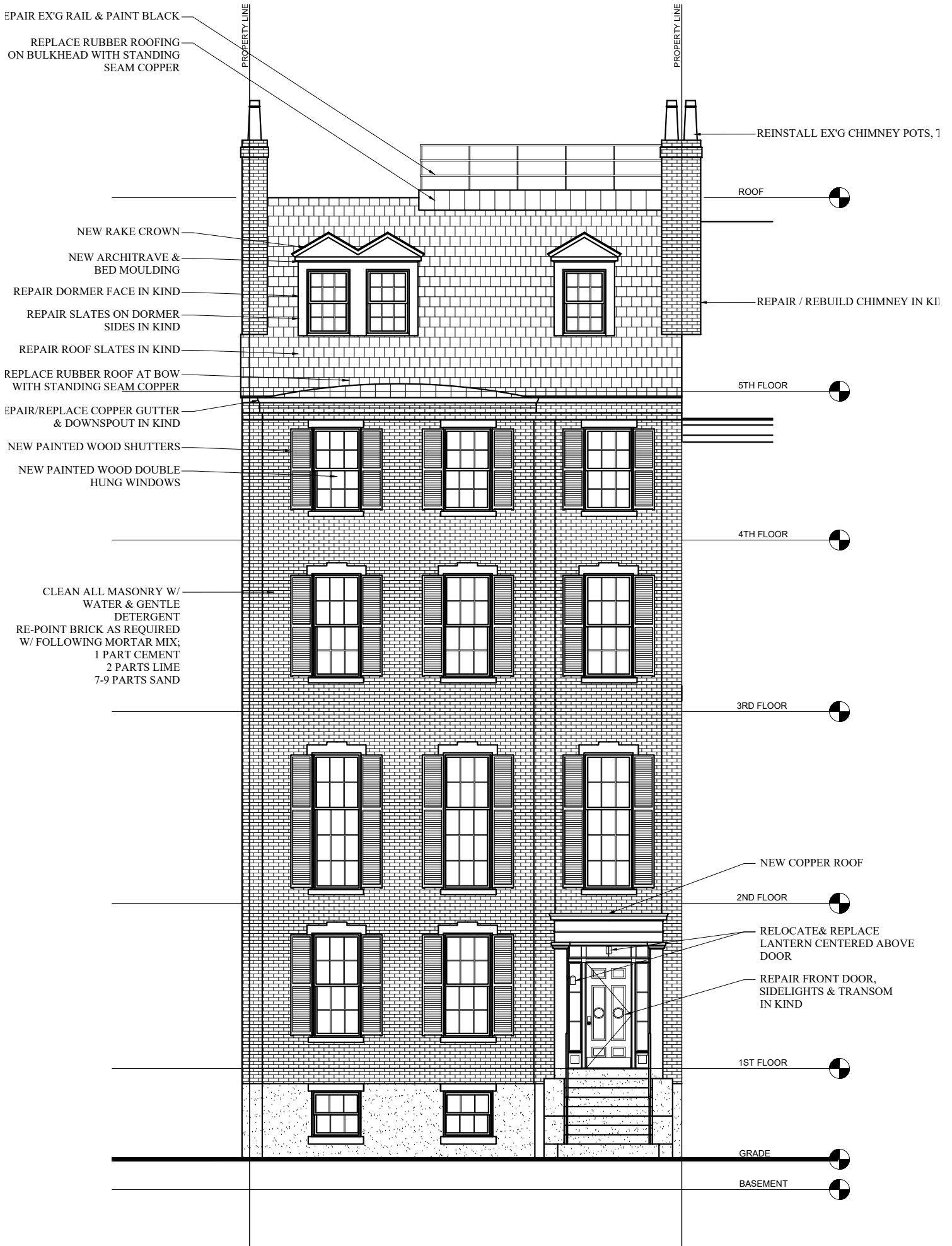
Mt Vernon











EPAIR EX'G RAIL & PAINT BLACK

REPLACE RUBBER ROOFING ON BULKHEAD WITH STANDING SEAM COPPER

PROPERTY LINE

PROPERTY LINE

REINSTALL EX'G CHIMNEY POTS, 1

ROOF

NEW RAKE CROWN

NEW ARCHITRAVE & BED MOULDING

REPAIR DORMER FACE IN KIND

REPAIR SLATES ON DORMER SIDES IN KIND

REPAIR ROOF SLATES IN KIND

REPLACE RUBBER ROOF AT BOW WITH STANDING SEAM COPPER

5TH FLOOR

EPAIR/REPLACE COPPER GUTTER & DOWNSPOUT IN KIND

NEW PAINTED WOOD SHUTTERS

NEW PAINTED WOOD DOUBLE HUNG WINDOWS

4TH FLOOR

CLEAN ALL MASONRY W/ WATER & GENTLE DETERGENT RE-POINT BRICK AS REQUIRED W/ FOLLOWING MORTAR MIX: 1 PART CEMENT 2 PARTS LIME 7-9 PARTS SAND

3RD FLOOR

NEW COPPER ROOF

2ND FLOOR

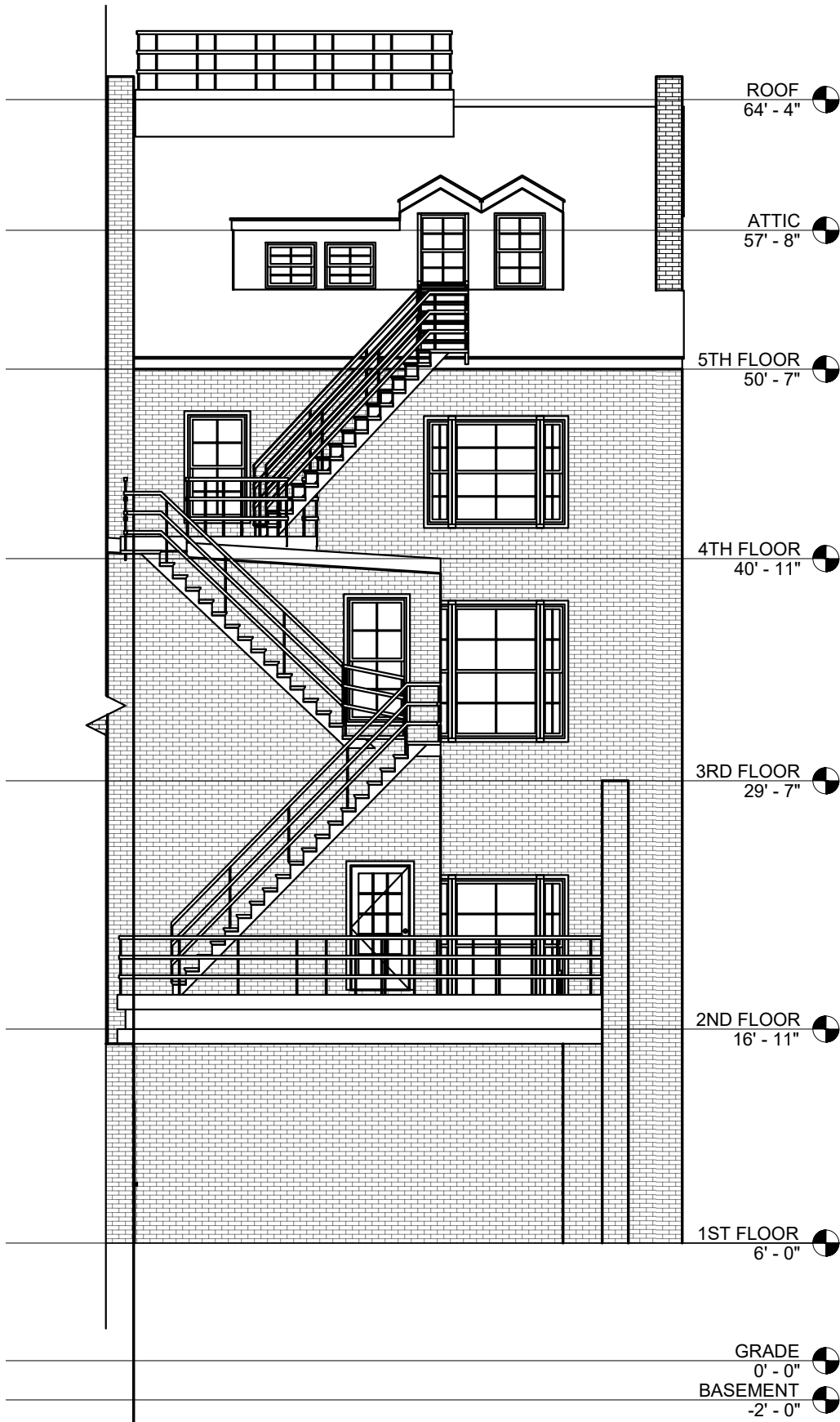
RELOCATE & REPLACE LANTERN CENTERED ABOVE DOOR

REPAIR FRONT DOOR, SIDELIGHTS & TRANSOM IN KIND

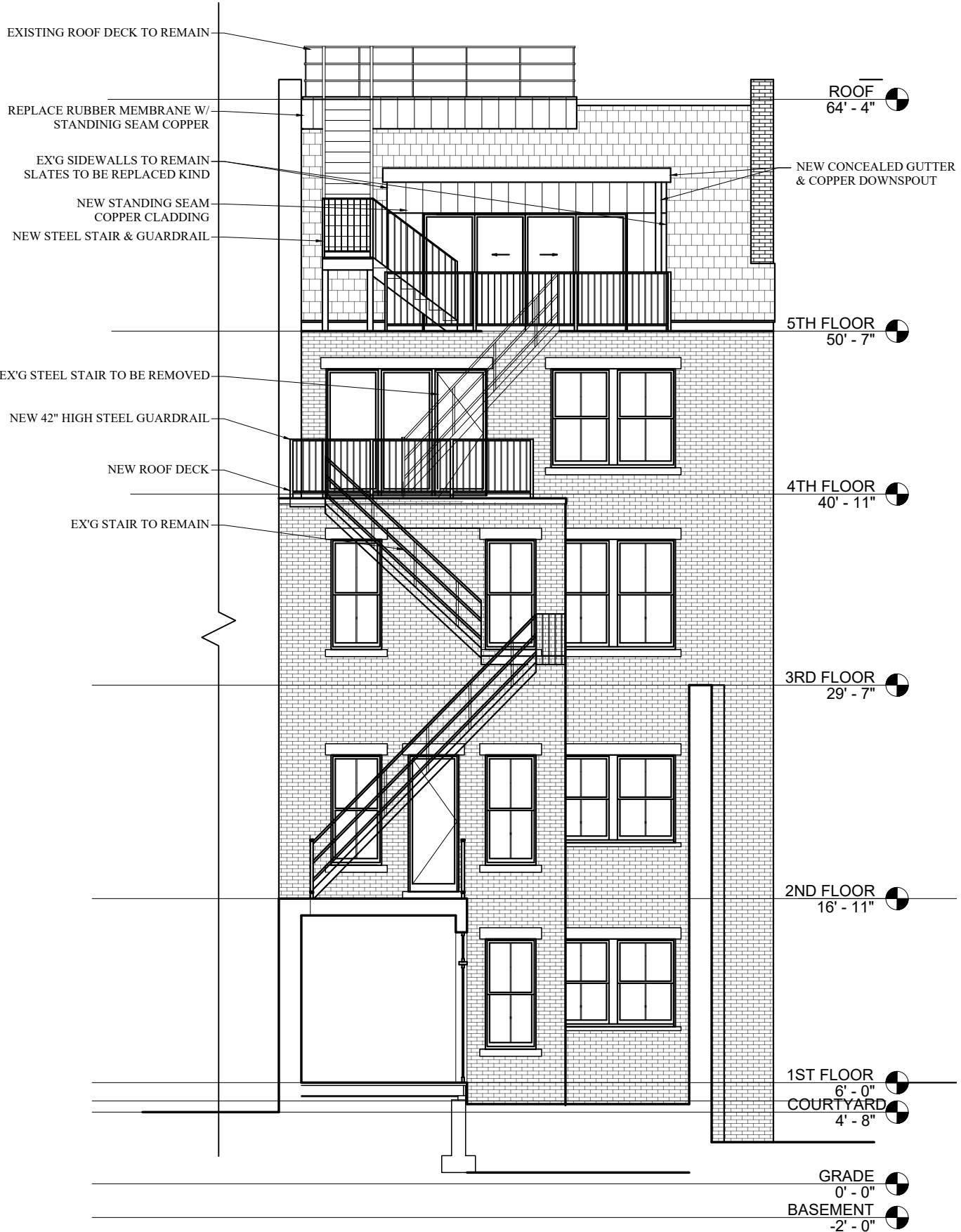
1ST FLOOR

GRADE

BASEMENT



EXISTING REAR



PROPOSED REAR

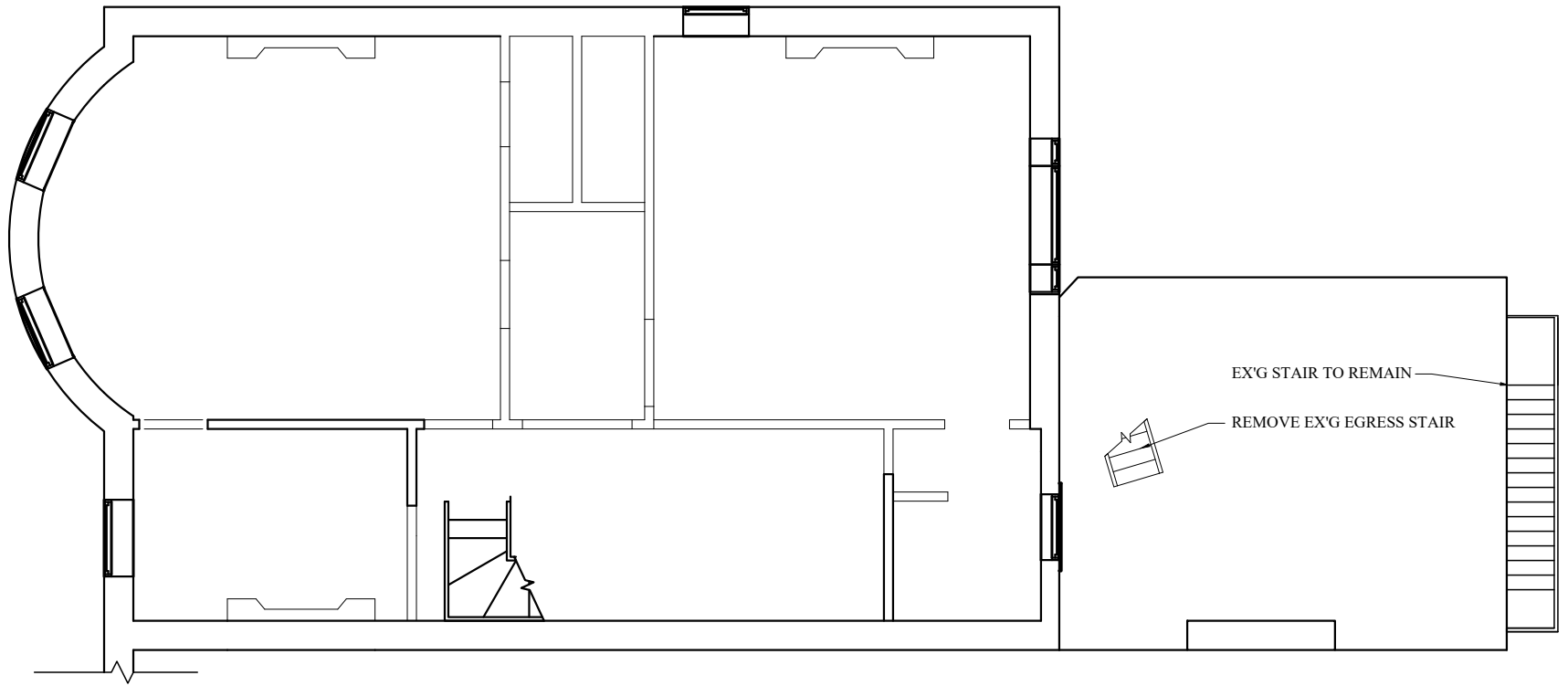


EXISTING SIDE

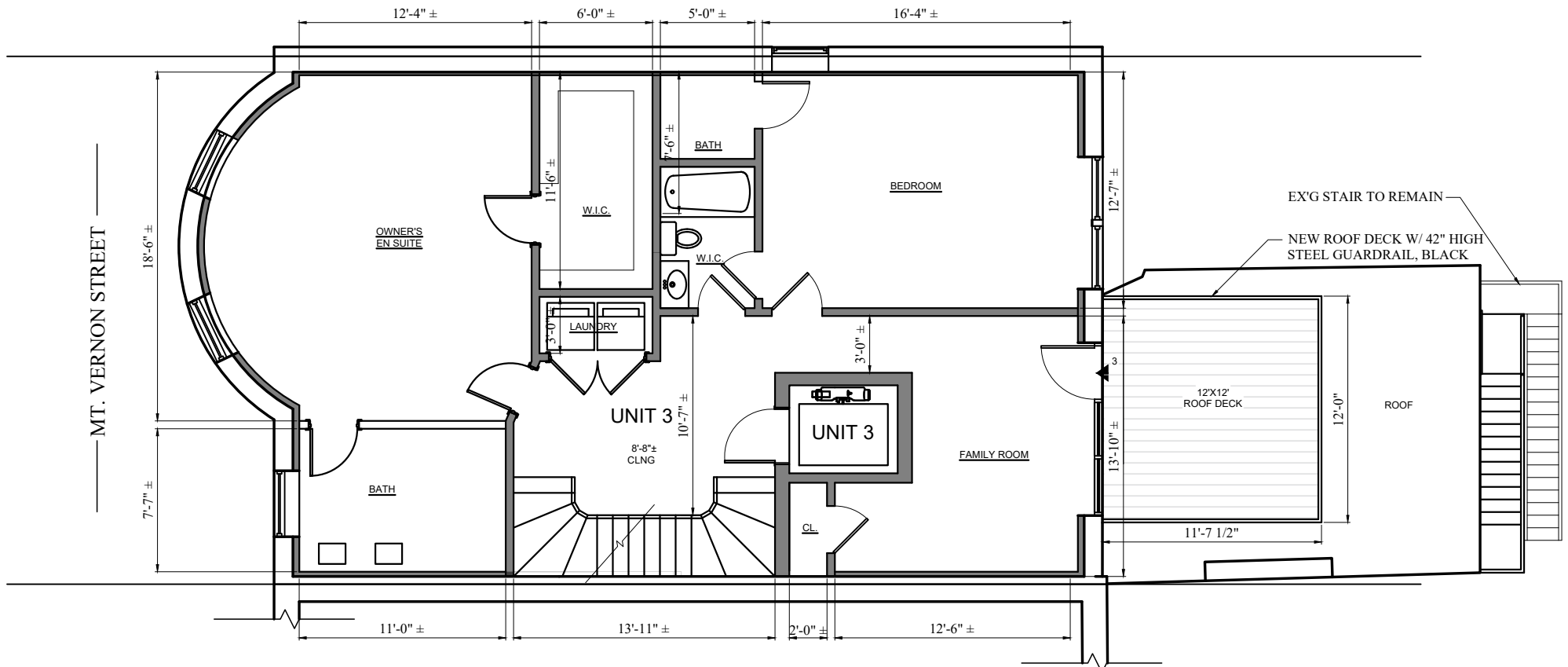


PROPOSED SIDE

— MOUNT VERNON ST. —

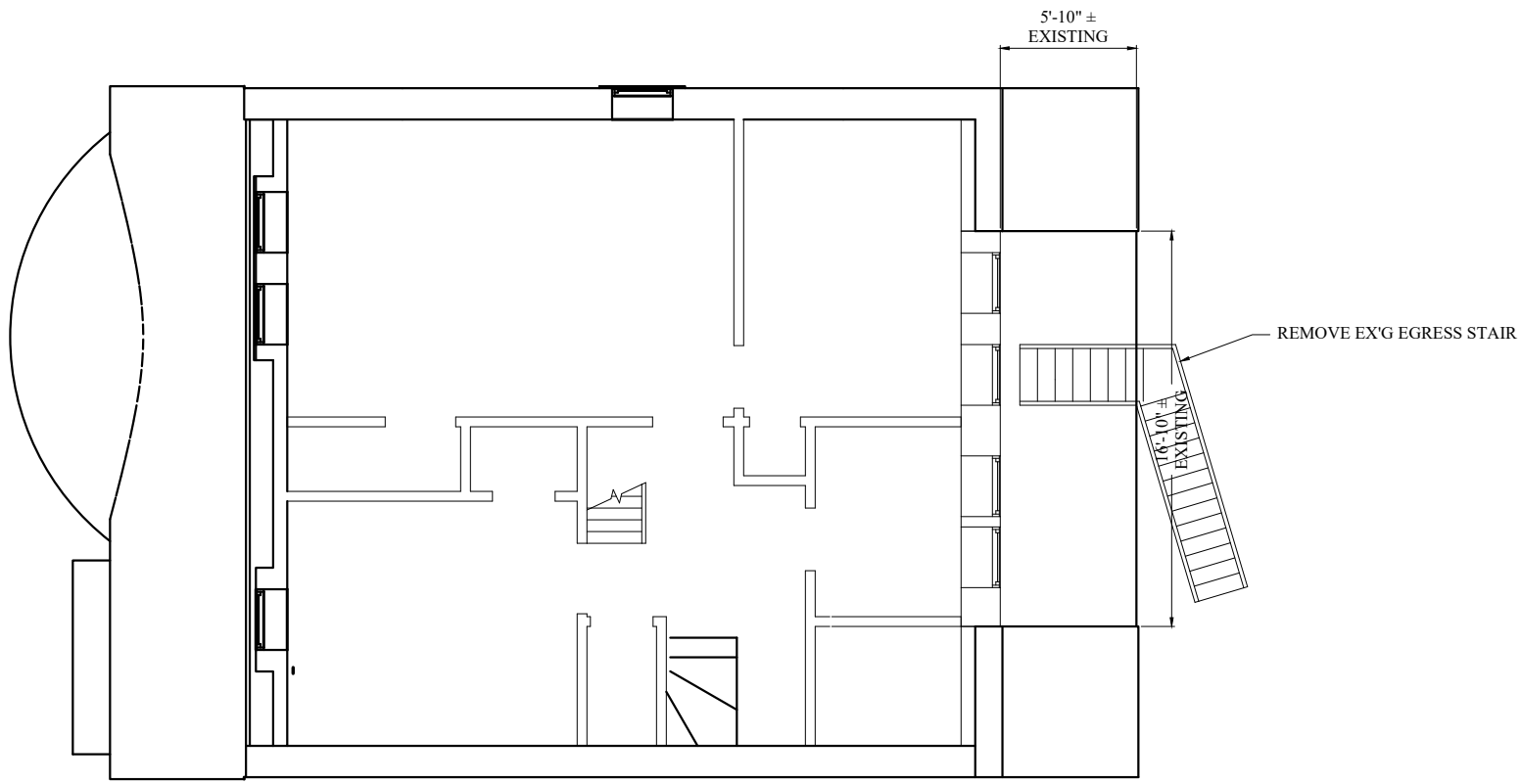


EX'G 4TH FLR

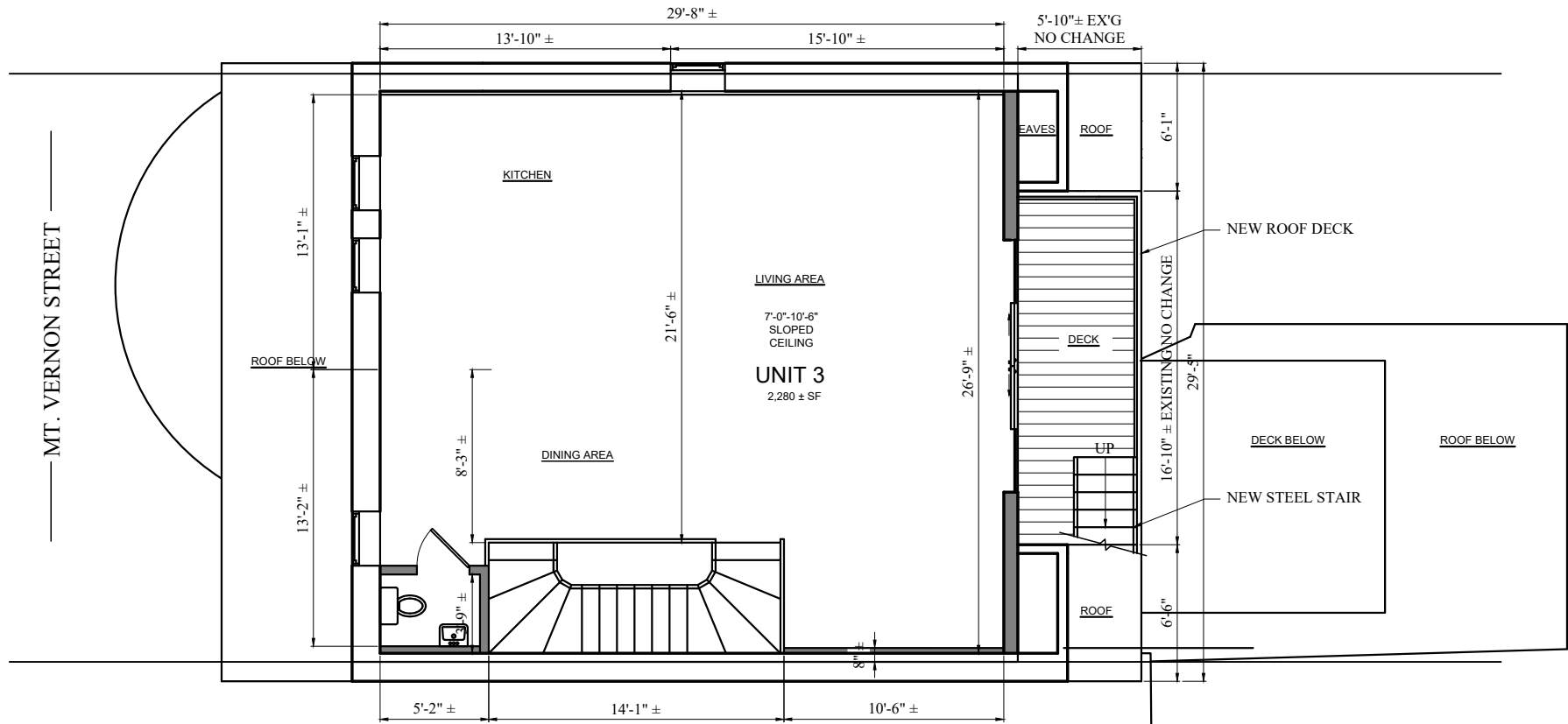


PROPOSED 4TH FLR

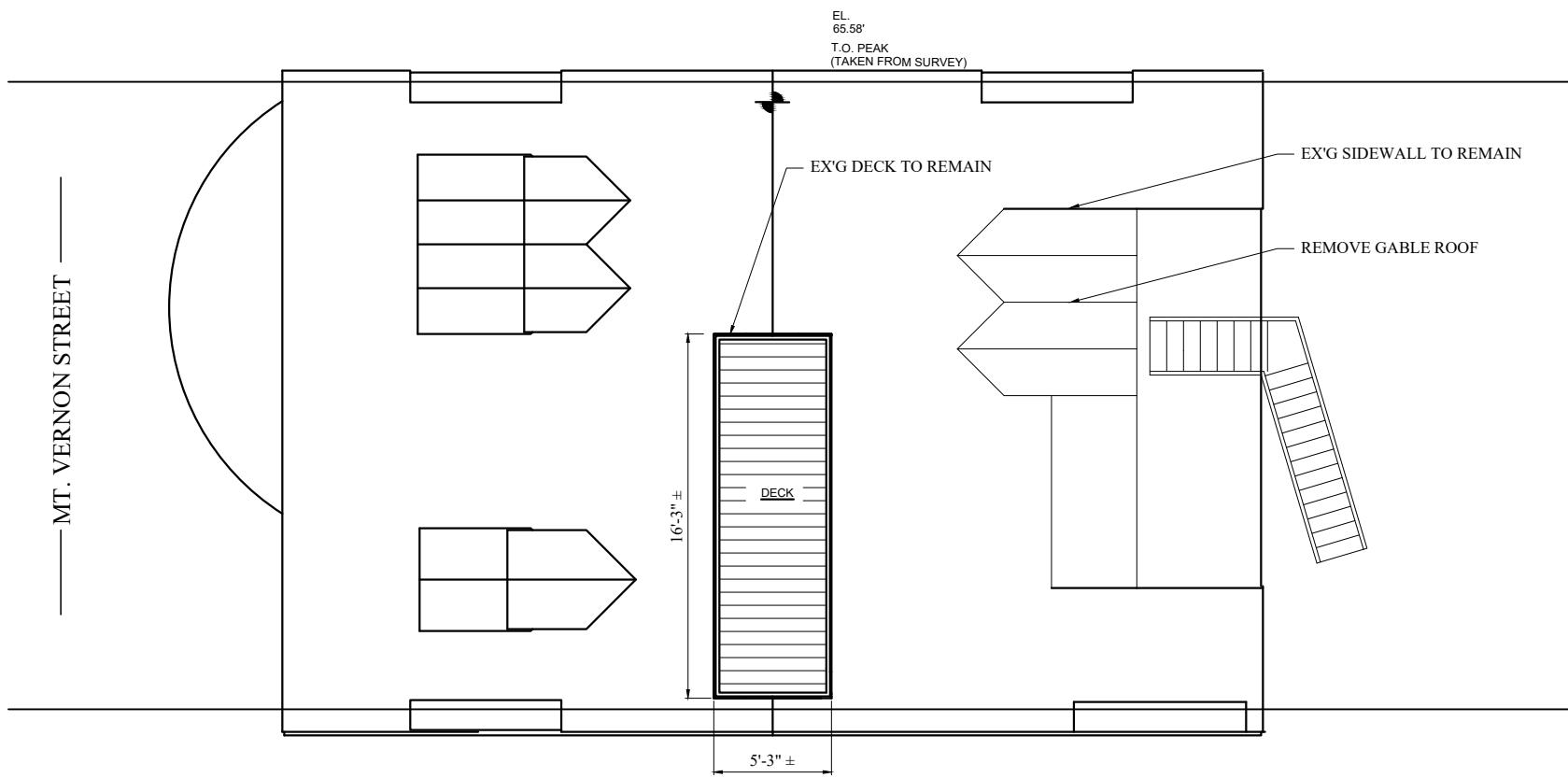
— MOUNT VERNON ST. —



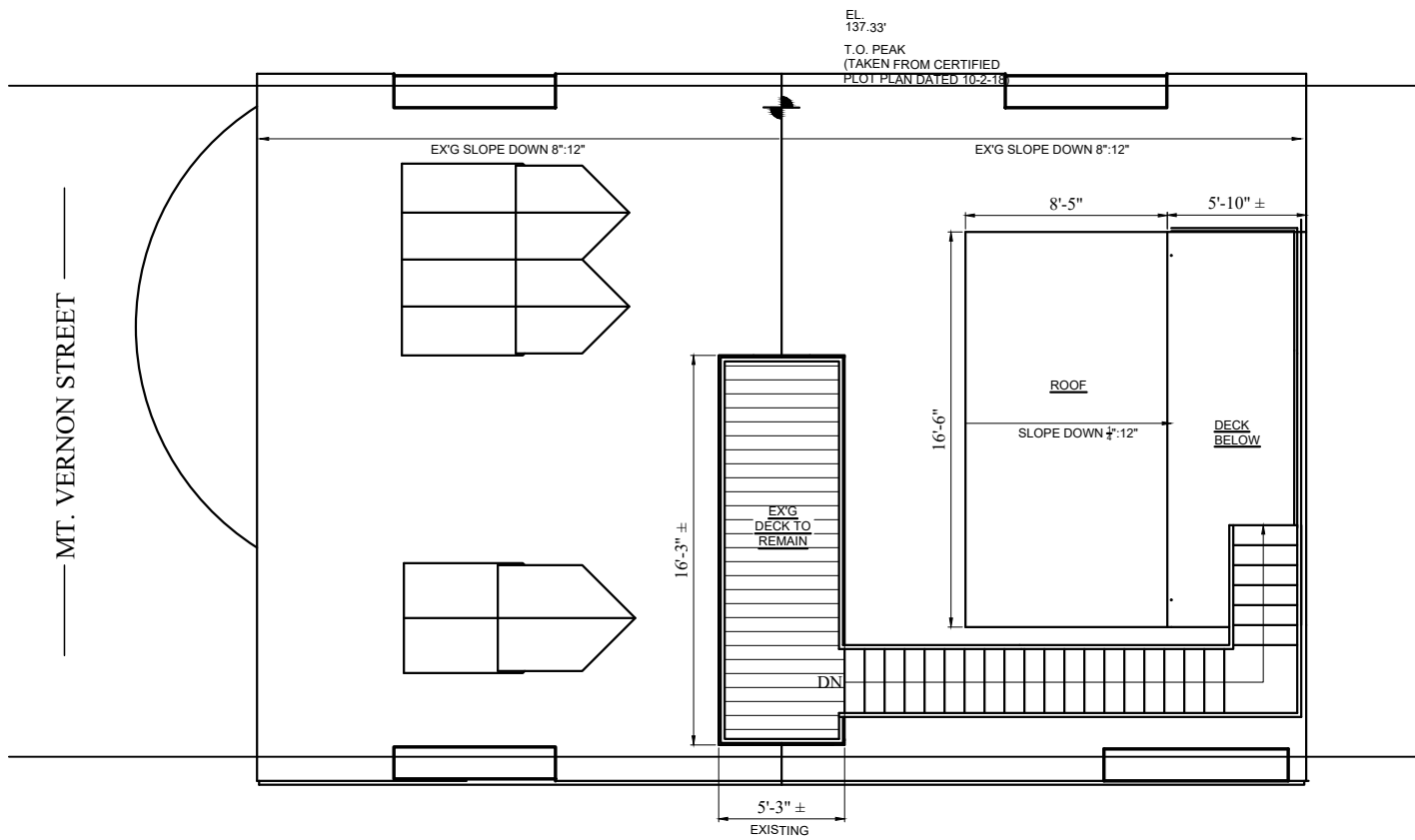
EX'G 5TH FLR



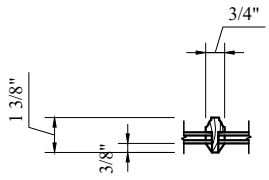
PROPOSED 5TH FLOOR



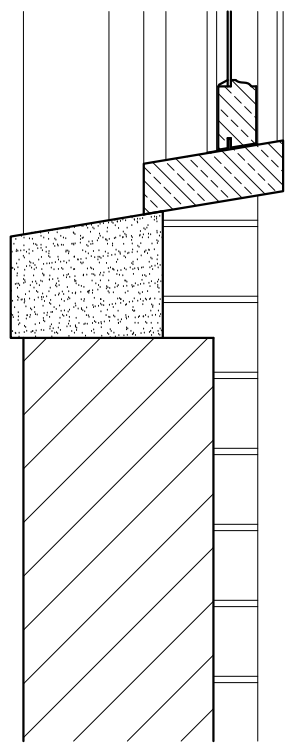
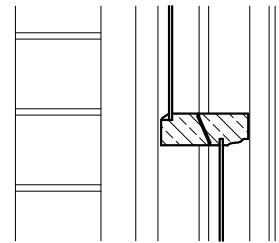
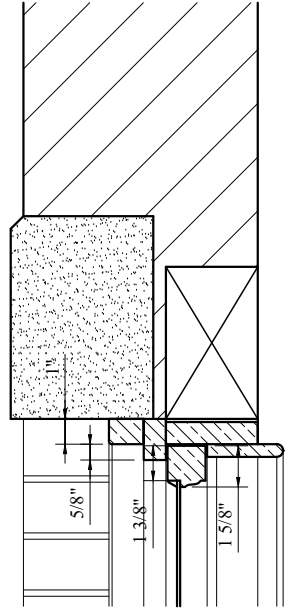
EX'G ROOF



PROPOSED ROOF

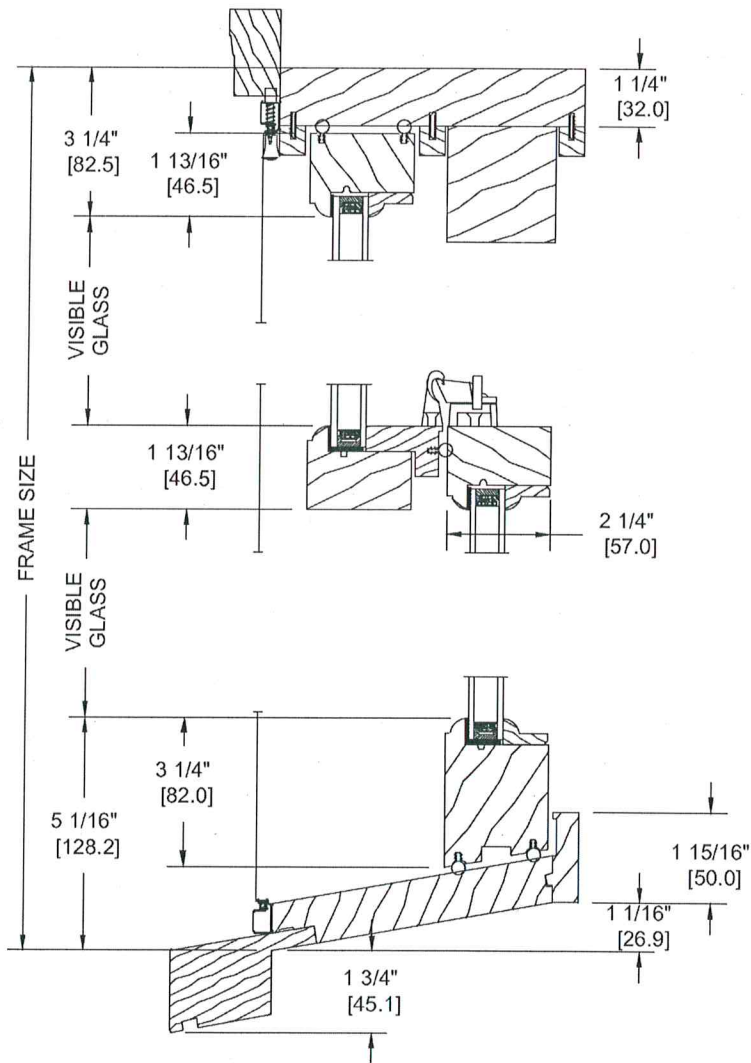


WINDOW MUNTIN DETAIL



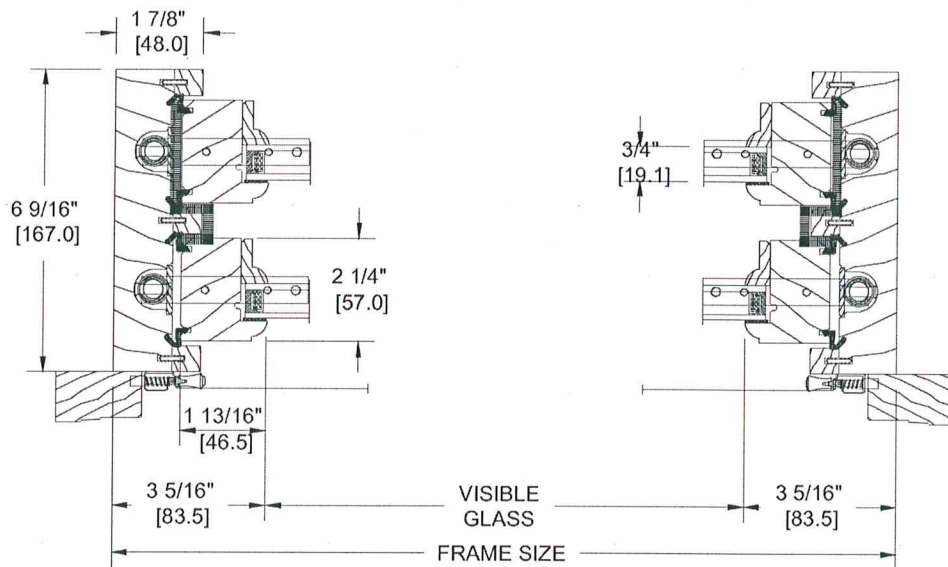
WINDOW SECTION, NTS

WOOD XL-200 HUNG WITH 908 BRICKMOULD AND HISTORIC SILL
 2 1/4" x 1 13/16" sash (narrow sash)



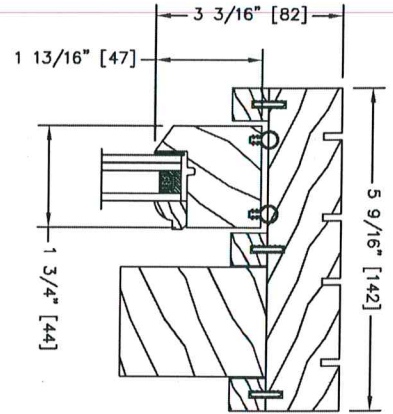
VERTICAL SECTION

WOOD XL-200 HUNG WITH 908 BRICKMOULD AND HISTORIC SILL
 2 1/4" x 1 13/16" sash (narrow sash)



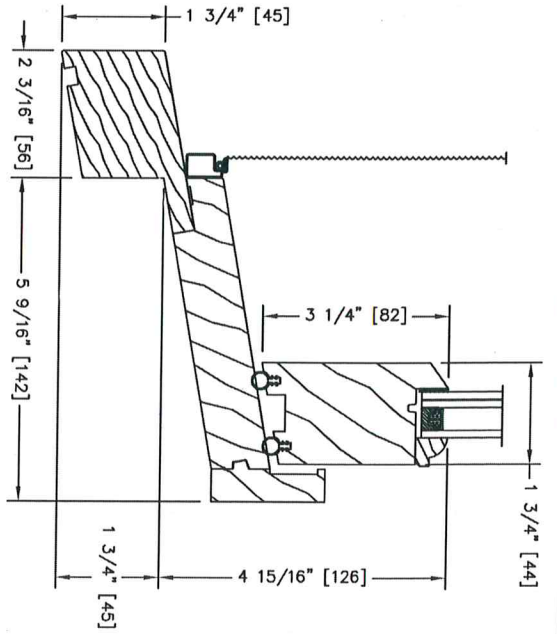
HORIZONTAL SECTION

(A)



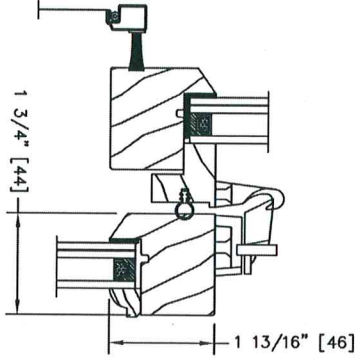
WOOD XL-100 DOUBLE HUNG HEAD JAMB
 PUTTY EXT / COLONIAL STOPS INTER W/ .015 LAMINATED GLASS
 5 9/16" JAMBS, VERTICAL DETAIL

(C)



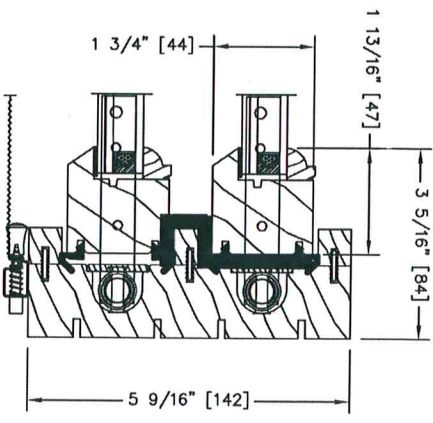
WOOD XL-100 DOUBLE HUNG W/ HISTORIC NOSING SHIPPED LOOSE
 PUTTY EXT / COLONIAL STOPS INTER W/ .015 LAM GLASS
 HALF SCREEN, 5 9/16" JAMBS, VERTICAL DETAIL

(B)



WOOD XL-100 DOUBLE HUNG CHECK RAIL W/ HALF SCREEN
 PUTTY EXT / COLONIAL STOPS INTER W/ .015 LAMINATED GLASS
 VERTICAL DETAIL

(D)

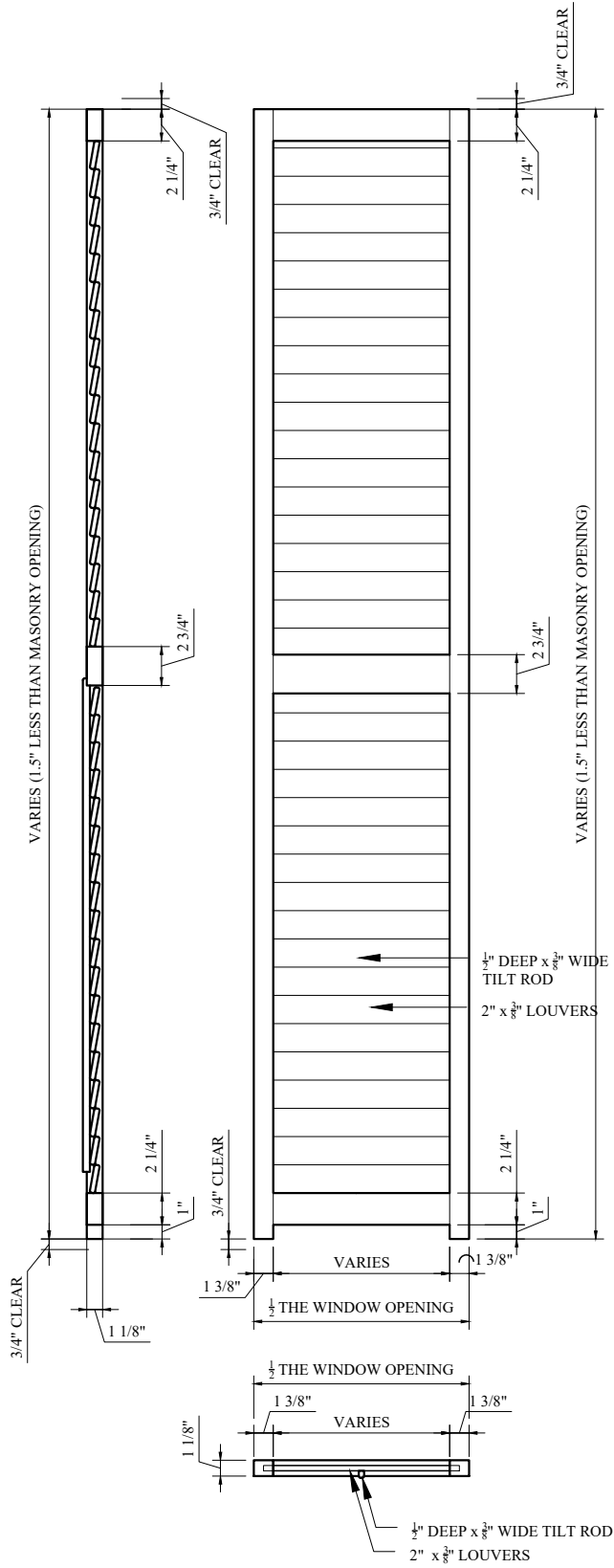


WOOD XL-100 DOUBLE HUNG SIDE JAMB
 PUTTY EXT / COLONIAL STOPS INTER W/ .015 LAMINATED GLASS
 W/ HALF SCREEN, 5 9/16" JAMBS, HORIZONTAL DETAIL

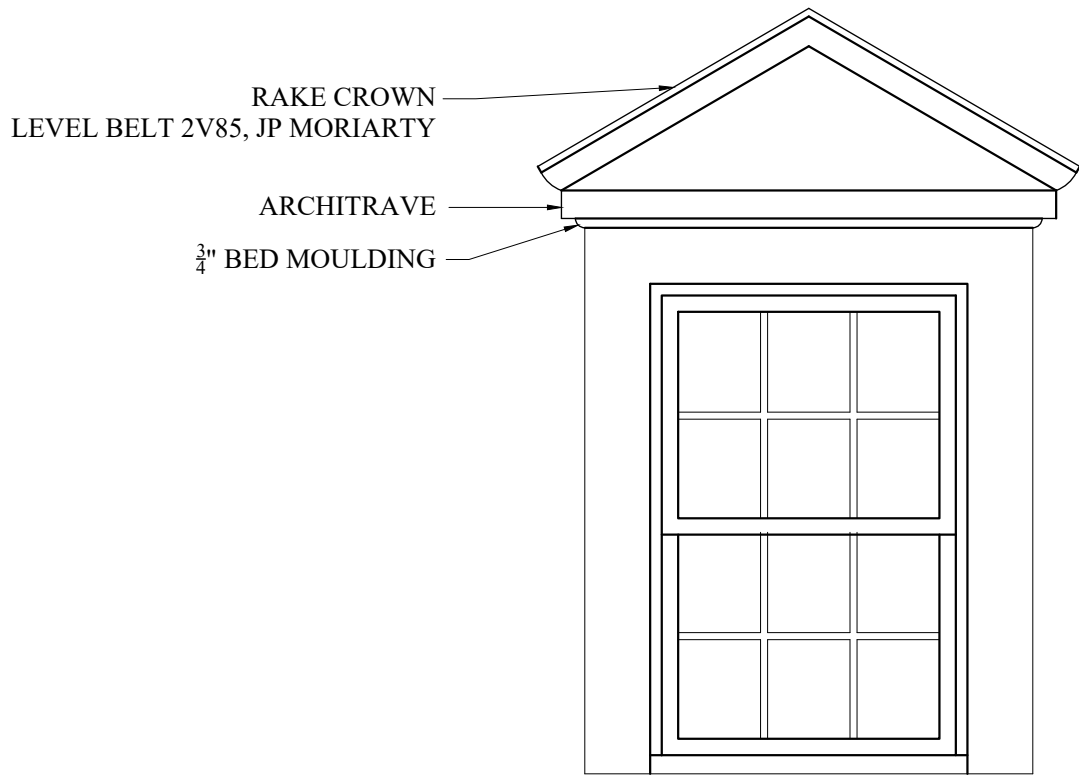
DRAWING NUMBER: MJN1651		JOB: 212 COMMONWEALTH AVE		CUSTOMER: OPENINGS MILLWORK		141, CHEMIN DES RAYMOND CP. 1296 G5R 4L9 RIVIERE-DU-LIQU TEL: (418) 862-2611 FAX: (418) 862-2391	
QUOTE: 280610		SCALE: NTS		DATE: 10-15-18		PAGE: D5	
DRAWN BY: M. NEWMAN	INSIDE REP: M. GIRARD	SALES REP: P. NEUFFER	SCALE: NTS	DATE: 10-15-18	3RD REV:	4TH REV:	5TH REV:



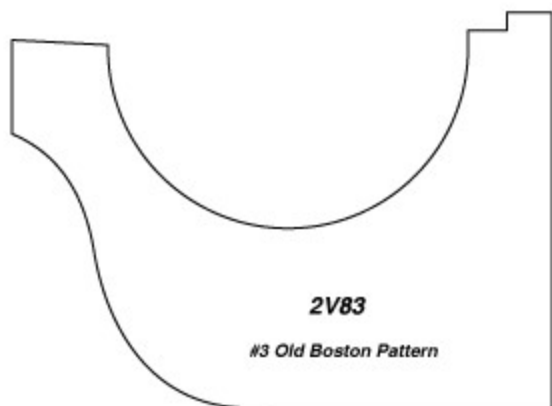
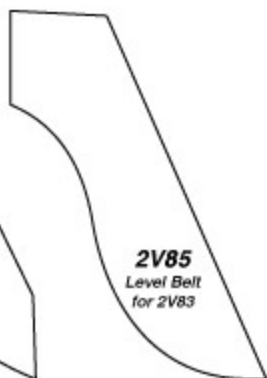
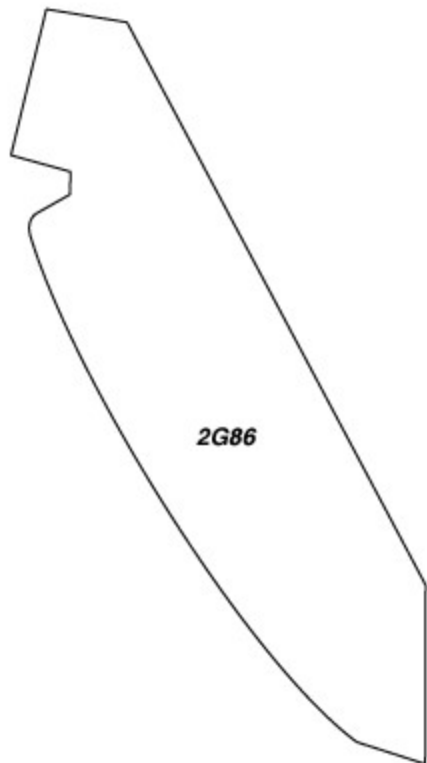
CUSTOM WOOD SHUTTERS BY SOUTHERN SHUTTER COMPANY
OR EQUIVALENT. DIMENSIONS BASED ON EX'G SHUTTER







FRONT DORMER ELEVATION

 $2\frac{3}{4} \times 3\frac{3}{4}$ " $\frac{3}{4} \times 3\frac{9}{16}$ " $\frac{7}{8} \times 3\frac{1}{16}$ " $1\frac{3}{8} \times 5\frac{7}{8}$ "



St. Charles Medium Hanging Lantern with Copper Patina Finish

BY ACCLAIM LIGHTING

★★★★★ 5.0 (1) [Share Your Thoughts](#)

\$398⁰⁰

SAVE 20% (\$79.60)
with code SAVE20 Ends today!

FREE shipping
Est. delivery by Feb 8

QUANTITY:

1

ADD TO CART

Discontinued - limited quantities!



Questions?
Contact Customer Care

PRICE MATCH GUARANTEE



Trade member?
Unlock Pro Pricing

Just For You



DESCRIPTION

SPECS

RESOURCES

SHIPPING & RETURNS

REVIEWS

Q&A

- This hanging lantern features a copper patina finish with clear flat glass.
- Solid Copper
- 5' Chain + 10' Wire
- Glass Type: Clear Flat
- Light Bulbs Not Included

SHIPPING OVER 100.00



FREE SHIPPING on orders over \$100 (in the lower 48 states)

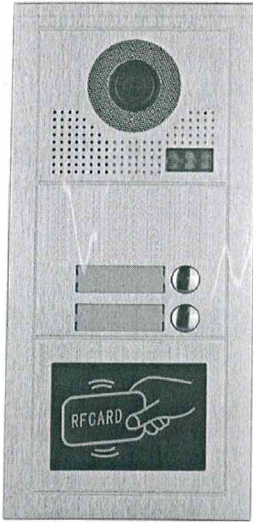


CALL FOR DISCOUNTED Project Pricing 888-556-3998

Start by typing tl

ACCOUNT

- HEALTHCARE
- SECURITY
- VIDEO ENTRY
- INTERCOMS
- OTHER PRODUCTS
- SALE ITEMS
- CONTACT US



← ANTIQUE BRASS FINISH

MT Series 2 Button Card Reader Video Door Lobby Panel MT-802R

SKU: MT-802R

\$153.00

Be the first to review this product

The MT Series multitenant video intercom system only requires 2 conductors. With just 2 wires you are able to provide video, power, and intercom function. May work as an upgrade replacement on older intercom only systems.

Free Quote

Qty

1

ADD TO CART

-OR-

PayPal Check out
The safer, easier way to pay

-OR-

PayPal CREDIT

0	SPECS	REVIEWS
---	-------	---------

VIDEO INTERCOM APARTMENT PANEL COLOR CAMERA NIGHT VISION

MT-802R Two Button Door Entry Lobby Panel offers night vision and card reader functionality. With a digital display, our MT-802R allows users to view the panel when no other lighting is available. The buttons include a night light function for night viewing. The 7.7 inch by five inch by .75 inch panel is wired using two conductor cables for video and intercom and one for power. The panel can be either surface or flush mounted depending on the application. Apartments, condominiums, business offices, parking garages, schools & colleges, and assisted living facilities are only a few venues that benefit from our Door Entry Lobby Panel Camera.

MT SERIES MT-802R TWO BUTTON DOOR ENTRY PANEL FEATURES & SPECS

2 Button Lobby Panel with Card Reader

1.0MP 3.6mm lens

adjustable Up/Down

HD camera door station with rain cover

Night vision, zinc alloy panel

Resolution: 700 TV lines camera

Flush/Surface mounting

Requires ONLY 2 Wires for Video, Intercom and Power

Dimensions: (7.7in Tall) x (5in Wide) x (.75in Deep, Flush Mount)

[Free Quote](#)