

Improvements to **CLARENDON TOT LOT**



Image courtesy of the Friends of
Clarendon Street Play Lot

January 7th, 2021
Boston Parks and Recreation



MEETING RECORDING



The Boston Parks and Recreation Department will be recording the meeting and posting to our project webpage for those who are unable to attend the Zoom meeting live.

It is possible that participants may also be recording the meeting with their phones cameras or other devices. If you do not wish to be recorded during this meeting, please keep your microphone and camera off.

VIRTUAL MEETING ETIQUETTE

We want to ensure this conversation is a pleasant experience for all and that all community members/ stakeholders are comfortable sharing their comments, questions and feedback.

Please be respectful and mindful of each other's time when asking questions/ providing comments, so that all attendees are able to participate in the meeting.

Keep questions/ comments project-specific and not personal to yield solution-driven discussion.

Please wait until all attendees have had the opportunity to ask a question/ provide a comment before providing additional questions/ comments.

You can always set up a conversation with **Nathan Frazee**, Nathan.Frazee@boston.gov to further discuss the project or process.

ZOOM TIPS

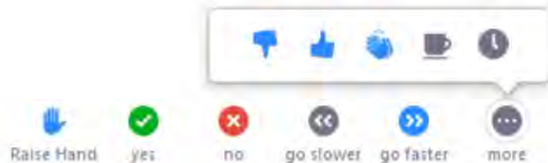
Here is how you can participate during the question and answer part of the presentation.

DURING THE PRESENTATION:



VIA WEB:

Turn video on / off.



To use these non-verbal options click on participants (bottom of screen); these options will pop up in side bar.

DURING THE Q&A:



JOINING VIA PHONE?

Use *9 to raise hand to ask for audio / video permission to ask questions or provide comments.



VIA WEB:

Chat to ask questions / comments or provide responses to poll questions



Raise hand to ask for audio / video permission to ask questions or provide comments.

AGENDA

1 **PROJECT TEAM INTRODUCTION**

2 **PROJECT OVERVIEW**

3 **PRESENTATION**

4 **LISTENING & DISCUSSION**

5 **CLOSING REMARKS & NEXT STEPS**

PROJECT TEAM

Nathan Frazee

Project Manager

Nathan.frazee@boston.gov or 617-961-3167

Christine Brandao

Outreach Coordinator, External Affairs

christine.brandao@boston.gov or 617-961-3006

Cheri Ruane, FASLA, RLA

Practice Leader, Landscape Architecture
Weston & Sampson

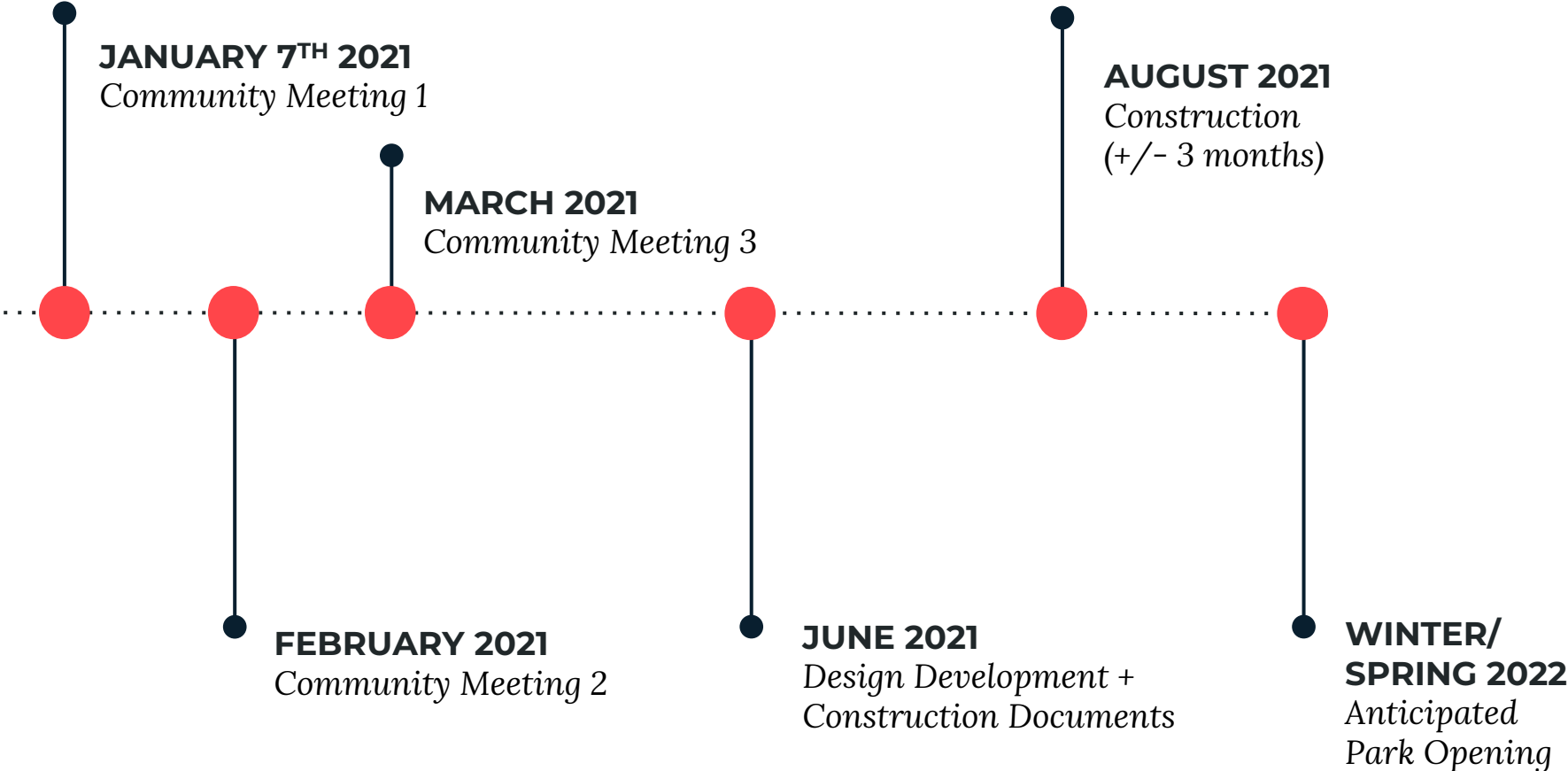
Cassie Bethoney, RLA

Senior Landscape Architect and Project Manager
Weston & Sampson



PROJECT SCHEDULE & FUNDING

\$ 1,530,000 Capital Funding







CITY OF BOSTON PRIORITIES

- Expanding walkable access to parks
- Addressing equity
- Climate resilience
- Health
- Housing and community building





PARK & RECREATION GOALS

- **Preserve and protect existing trees**
- **Expand usable park area**
- **Improve universal access**
- **Enhance park visibility**
- **Improve access to parks**
- **Design flexible, multi-functional park spaces**



THE **5** ELEMENTS OF PLAY





SOCIAL/ EMOTIONAL

COOPERATION, DRAMATIC +
IMAGINATIVE PLAY



SEATING + TABLE AREAS,
THEMATIC PLAY ELEMENTS
(SHIPS), PLAY HOUSES

PHYSICAL

GROSS MOTOR/ FINE MOTOR SKILLS,
FLEXIBILITY, ACCESSIBILITY,
HEALTHY RISK + VARIETY



DISH SWINGS, MOVEABLE
OBJECTS, SWINGS, MONKEY
BARS, BALANCE

SENSORY

TOUCH, VISUAL, AUDITORY, SMELL
VESTIBULAR, PROPRIOCEPTIVE +
INTEROCEPTIVE



PUSH/ PULL ELEMENTS
WATER ELEMENTS, VARIED
TEXTURES + COLORS, SPINNING,
MOVEABLE OBJECTS, ROCKING

COGNITIVE

CREATIVITY, SENSE OF
ACCOMPLISHMENT, PROBLEM-
SOLVING, CAUSE + EFFECT, RISK
ASSESSMENT



INTERACTIVE WATER
ELEMENTS, ROPE CLIMBER,
LINKED PLAY ELEMENTS

COMMUNICATION

DEVELOPMENT OF RECEPTIVE +
EXPRESSIVE LANGUAGE



TALK TUBES, SLIDES, THEMATIC
PLAY ELEMENTS, TRIKE TRACK,
SEE SAWS

NEARBY PLAYGROUNDS



ESPLANADE PLAYGROUND:

- Tall 5-12 play structure, swings
- Nature inspired play structures

MYRTLE STREET PLAYGROUND

- 5-12 post and beam structure, swings
- Open play area



14 MINUTES (0.7 mi) STORROW DRIVE

12 MINUTES (0.5 mi)

20 MINUTES (0.9 mi)

STONEMAN PLAYGROUND:

- 2-5 and 5-12 play structures
- Nature inspired art



PROJECT SITE: Clarendon Tot Lot

16 MINUTES (0.7 mi)

TADPOLE PLAYGROUND:

- 5-12 play, perimeter fencing and seating
- Adjacent to Frog Pond



15 MINUTES (0.7 mi)

8 MINUTES (0.4 mi)

FRIEDA GARCIA CHILDREN'S PARK:

- Free-form climbing structures
- Basket swing

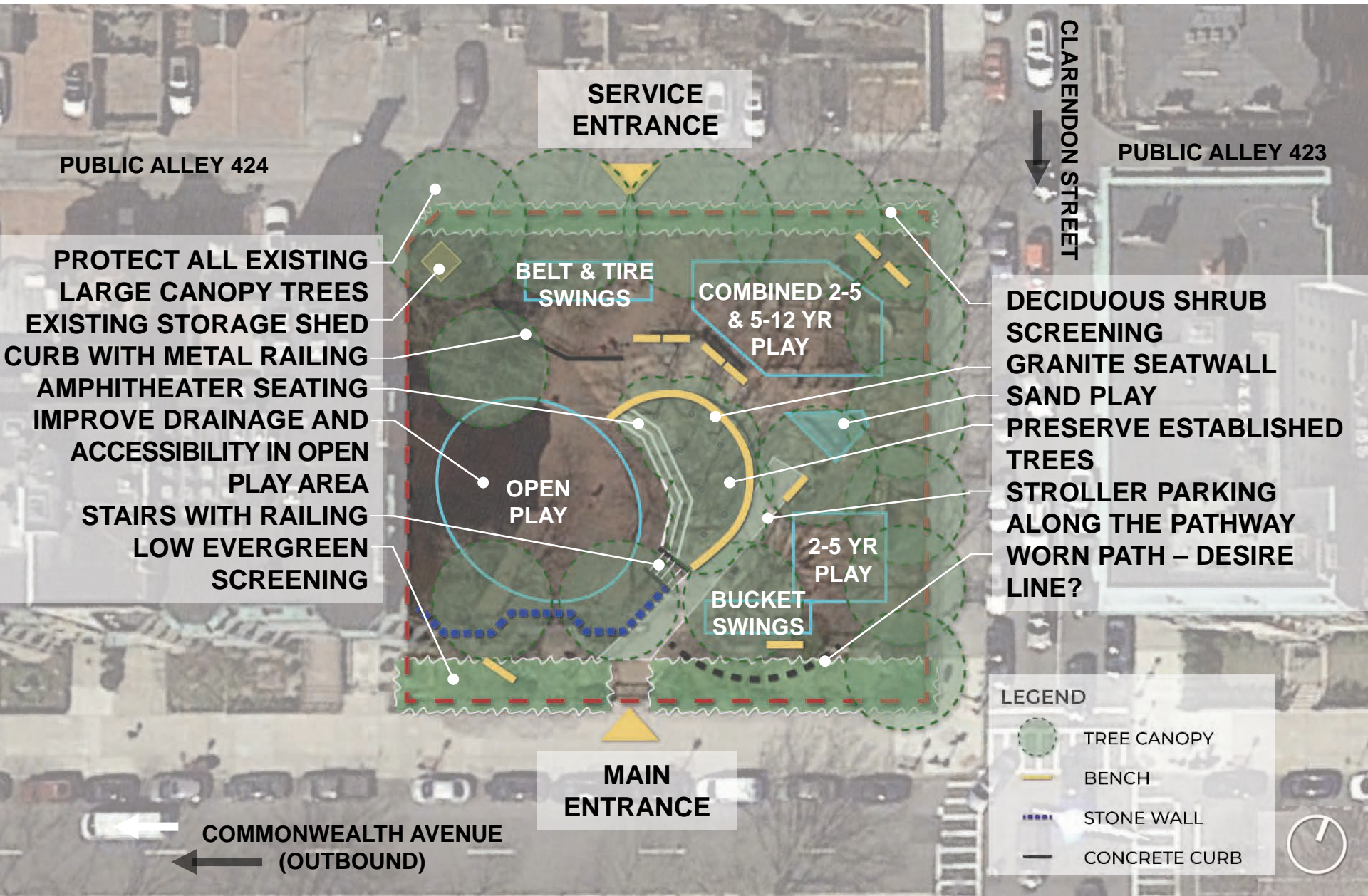


PLAYGROUND AT CARELTON STREET:

- 2-5 play structure, swings
- Perimeter fencing and gardens

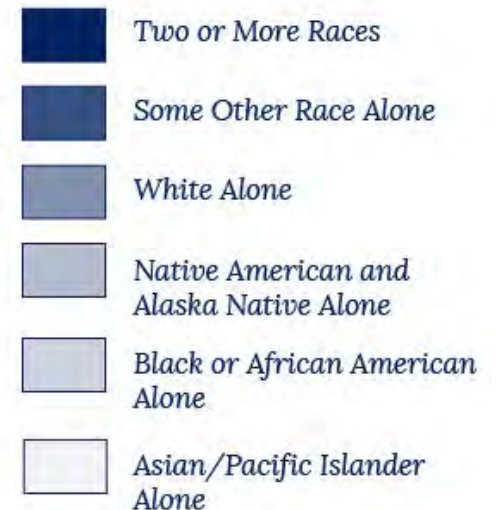
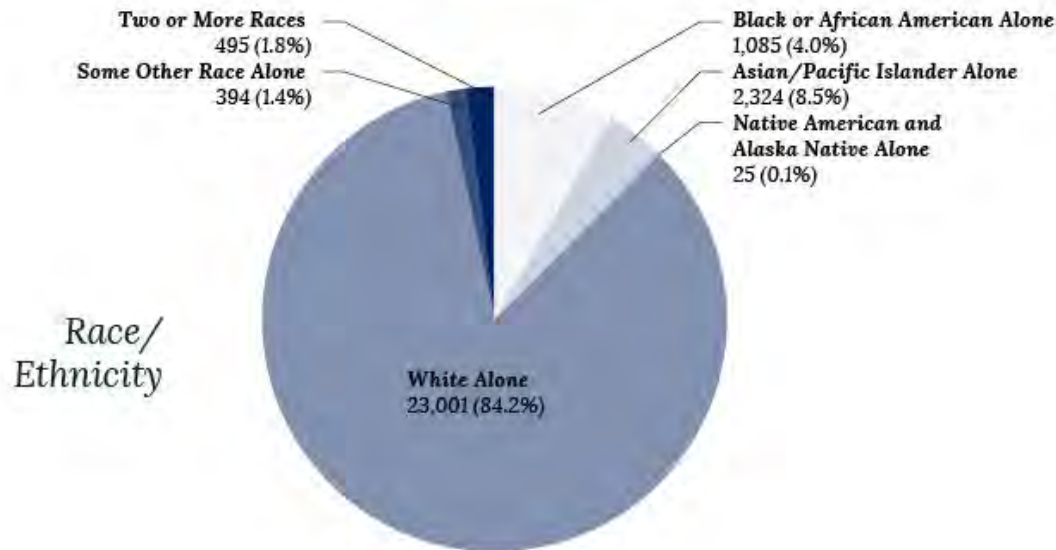
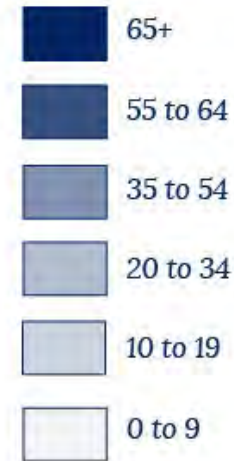
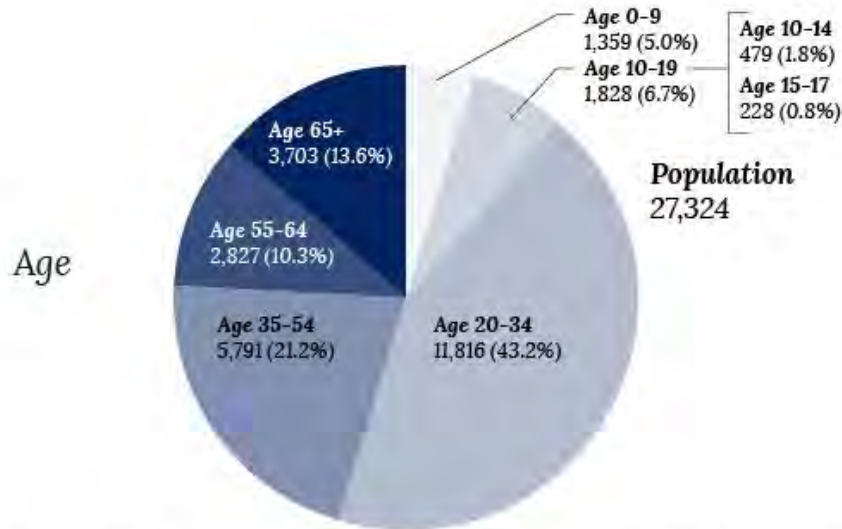


OVERALL SITE ANALYSIS



POPULATION STATISTICS

Back Bay Neighborhood



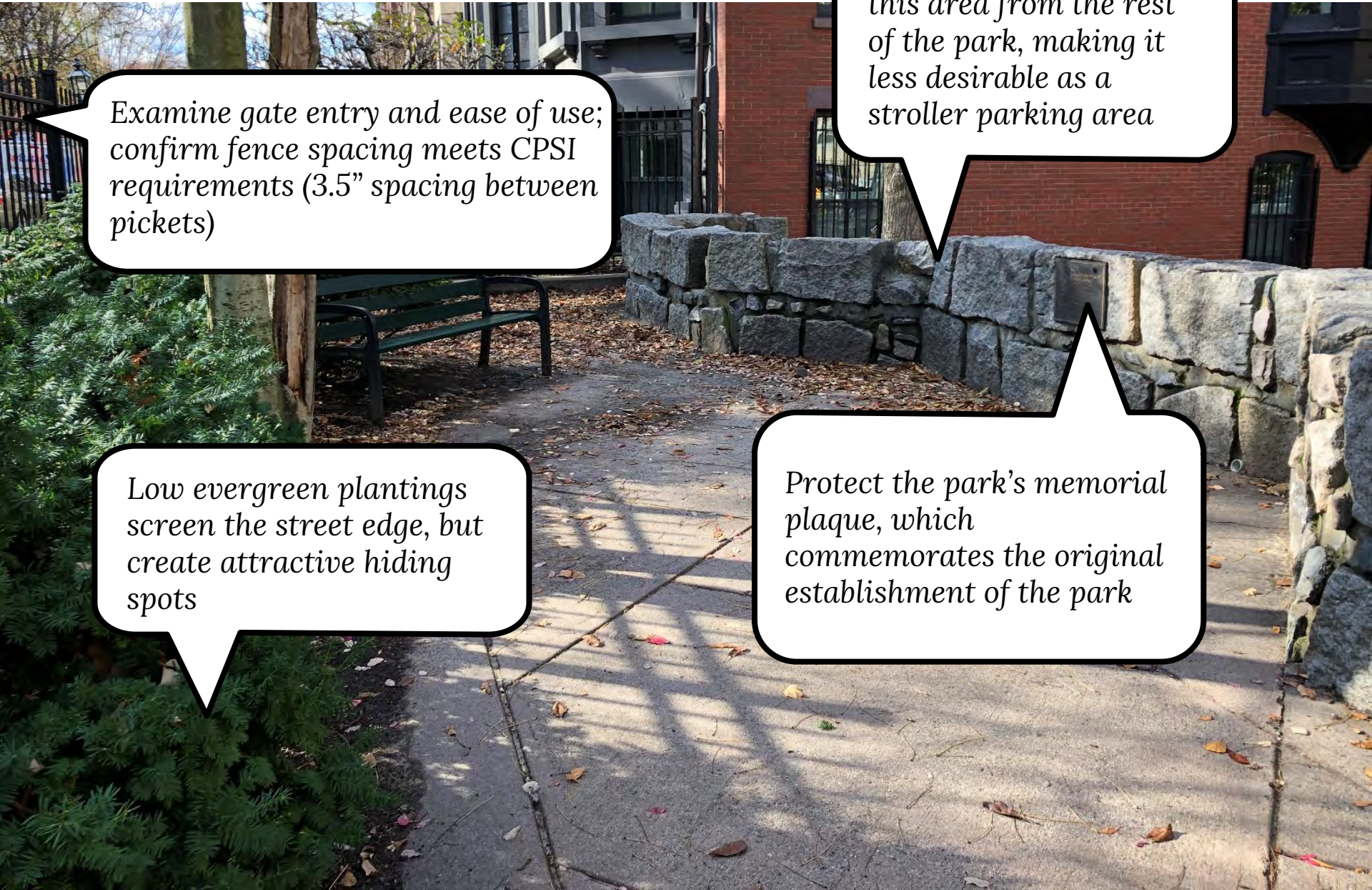
AT MAIN ENTRY

Examine gate entry and ease of use; confirm fence spacing meets CPSI requirements (3.5" spacing between pickets)

High walls disconnect this area from the rest of the park, making it less desirable as a stroller parking area

Low evergreen plantings screen the street edge, but create attractive hiding spots

Protect the park's memorial plaque, which commemorates the original establishment of the park



MAIN PATHWAY THROUGH



Designated stroller parking is a must have, off the main circulation route

High walls separate spaces

OPEN PLAY & AMPHITHEATER



Preserve established tree canopy

Accessibility and drainage is a concern in the open play area

PLAY EQUIPMENT

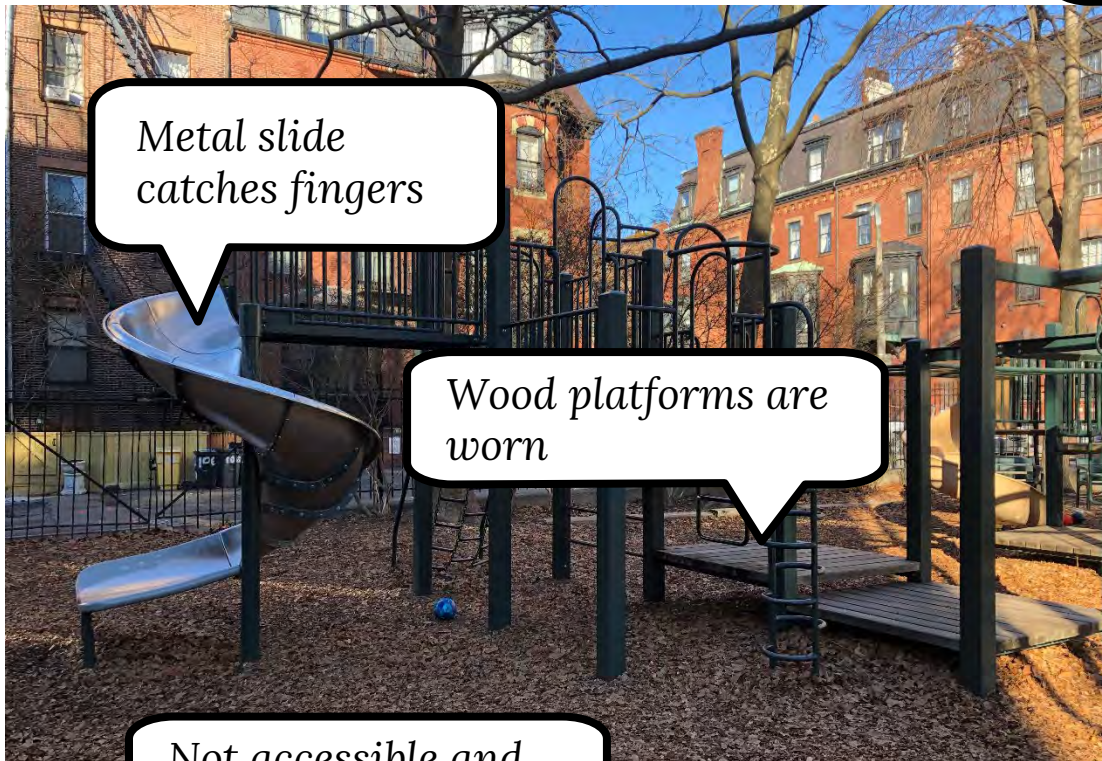
Surfacing is not compliant

Metal slide catches fingers

Wood platforms are worn

Not accessible and missing tire swing

Sand box lacks access



MORE FEATURES

Tree grove provides good shade and adds character



Amphitheater seating provides ample room for parents and caregivers as well as play opportunities



Etched stones are a nice little discovery



Adjacent resident's wall



TYPES OF PLAY

COMBINATION PLAY STRUCTURES



Traditional Post & Platform



Rope Climber Combination



Rope Climber & Post/Platform Combination



Nature-inspired Post & Platform

TYPES OF PLAY

COMBINATION PLAY STRUCTURES



Skywalk Rope Climber



Toddler Playhouse / Slide Combination



Treehouse Play Structure

TYPES OF PLAY

INDEPENDENT PLAY STRUCTURES



Supernova Spinner



Group Spinner



Embankment Slides and Climbers



Climber/Slide Combination

TYPES OF PLAY

INDEPENDENT PLAY STRUCTURES



Basket swing



Log Scramble



Imaginative Playhouse



Tandem Swing



Traditional Swings



Zip Line

TYPES OF PLAY

SENSORY



Nature-inspired Climber



Musical Instruments



Nature-Inspired Sand play



Sound and movement

PLAY SURFACING



Poured-in-place Rubber Safety Surfacing



Wood Fiber Mulch



Synthetic Turf





LISTENING & DISCUSSION

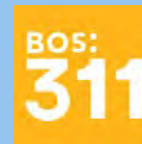
Help us build great parks.
Let us know what matters to you.



THANK YOU!

Next Meeting TBD

For questions, maintenance requests or concerns regarding any of our parks contact 311



January 7th, 2021
Boston Parks and Recreation

